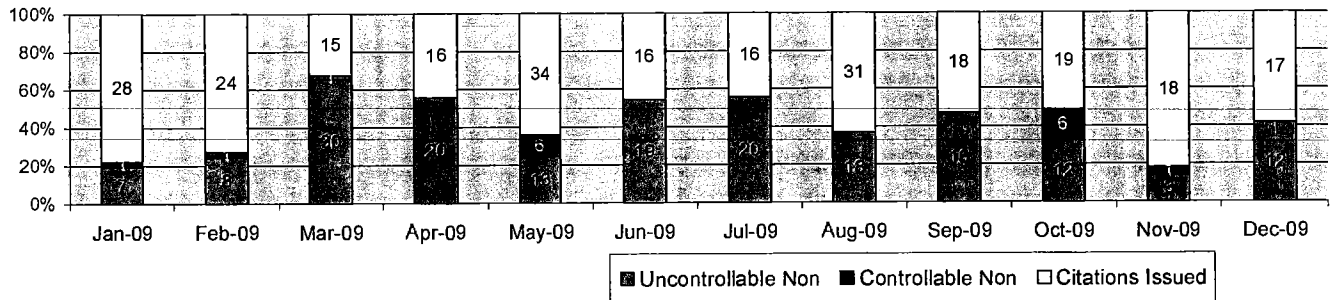




A xerox Company

Los Angeles County Approach Summary Report

Location 113: EB Batson @ Colima



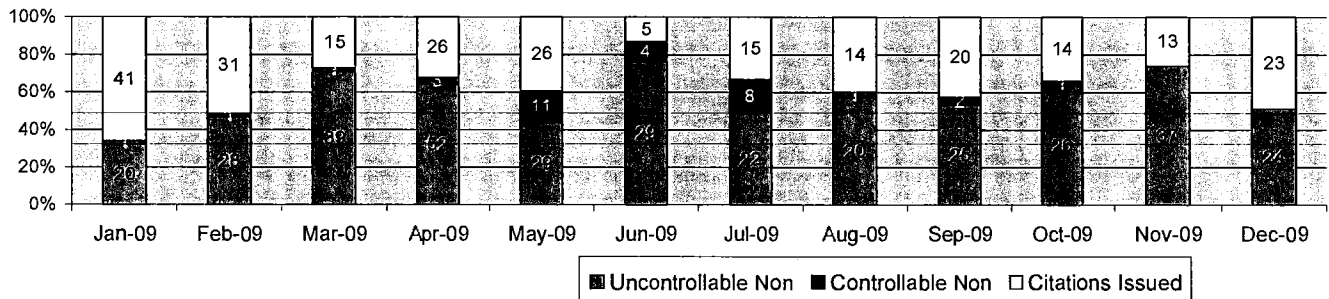
Events	Dec-09		3 Month Average		Year to Date Total		Year to Date Average		2008 Average	
	Quantity	% of Events	Quantity	% of Events	Quantity	% of Events	Quantity	% of Events	Quantity	% of Events
Non Violations	62	68.1%	47	60.3%	598	57.3%	50	57.3%	88	62.7%
Violations	29	31.9%	31	39.7%	446	42.7%	37	42.7%	38	37.3%
Total Events	91	100.0%	78	100.0%	1044	100.0%	87	100.0%	126	100.0%
Violations	Quantity	% of Viol	Quantity	% of Viol	Quantity	% of Viol	Quantity	% of Viol	Quantity	% of Viol
Uncont. Non-Issued Viol	12	41.4%	10	13.2%	178	39.9%	15	39.9%	12	6.4%
Cont. Non-Issued Viol	0	0.0%	2	3.0%	16	3.6%	1	3.6%	1	2.4%
Citations	17	58.6%	18	59.1%	252	56.5%	21	56.5%	25	55.5%
Vehicle Count-All Lanes	554,243		579,471		6,724,274		560,356		472,726	
Av. Violation Speed	31.59		31.43		31.30		31.30		32.36	
Av. Issued Speed	32.24		32.07		33.05		33.05		33.14	
Av. Violation Sec.	4.47		5.14		6.26		6.26		6.33	
Av. Issued Sec.	3.11		3.38		4.15		4.15		3.62	
Cal. Days/Enforc. Days	31	31	30	30	365	365	30	30	31	31
Daily Citation Yield	0.55	0.55	0.60	0.60	0.69	0.69	0.69	0.69	0.81	0.81
Cit/Viol. Iss. Rate	59%		59%		57%		57%		65%	
Controllable Iss. Rate	100%		89%		94%		94%		95%	
Non-Violations	Quantity	% of Events	Quantity	% of Events	Quantity	% of Events	Quantity	% of Events	Quantity	% of Events
Rear Axle Violation	0	0.00%	0	0.00%	0	0.00%	0	0.00%	0	0.07%
Right Turn	30	32.97%	33	42.74%	406	38.89%	34	38.89%	37	29.39%
No Violation Occurred	32	35.16%	14	17.52%	192	18.39%	16	18.39%	51	40.16%
Total Non Violations	62	68.13%	47	60.26%	598	57.28%	50	57.28%	88	69.62%
Non-Issued	Quantity	% of Viol	Quantity	% of Viol	Quantity	% of Viol	Quantity	% of Viol	Quantity	% of Viol
No Plate	0	0.00%	2	2.14%	11	1.05%	1	1.05%	1	1.06%
Out of State Plate	0	0.00%	0	0.00%	1	0.10%	0	0.10%	0	0.20%
Glare on Plate	0	0.00%	0	0.00%	1	0.10%	0	0.10%	0	0.13%
Illegible Plate	0	0.00%	0	0.00%	2	0.19%	0	0.19%	0	0.00%
Plate Obstructed	1	3.45%	0	0.00%	1	0.10%	0	0.10%	0	0.00%
Windshield Glare	0	0.00%	0	0.00%	9	0.86%	1	0.86%	1	0.99%
Driver Obstructed	1	3.45%	0	0.43%	4	0.38%	0	0.38%	0	0.33%
Car Obstructed	0	0.00%	0	0.43%	4	0.38%	0	0.38%	1	0.40%
Emergency Vehicle	6	20.69%	4	5.13%	62	5.94%	5	5.94%	4	3.24%
No Vehicle Match Found	0	0.00%	0	0.00%	2	0.19%	0	0.19%	0	0.07%
No DMV Match Found	2	6.90%	3	3.42%	27	2.59%	2	2.59%	3	2.05%
Police Expired	2	6.90%	1	1.71%	52	4.98%	4	4.98%	2	1.25%
Other	0	0.00%	0	0.00%	2	0.19%	0	0.19%	0	0.00%
Total	12	41.38%	10	13.25%	178	17.05%	15	17.05%	12	9.71%
Framing of Plate	0	0.00%	0	0.00%	0	0.00%	0	0.00%	0	0.00%
Focus / Clarity of Plate	0	0.00%	1	0.85%	11	1.05%	1	1.05%	1	0.40%
Dark Interior	0	0.00%	0	0.00%	0	0.00%	0	0.00%	0	0.07%
Framing of Driver	0	0.00%	0	0.00%	0	0.00%	0	0.00%	0	0.00%
Focus / Clarity of Driver	0	0.00%	0	0.00%	0	0.00%	0	0.00%	0	0.00%
Framing of Car	0	0.00%	0	0.00%	0	0.00%	0	0.00%	0	0.00%
Data Error	0	0.00%	0	0.00%	0	0.00%	0	0.00%	0	0.00%
Exposure	0	0.00%	0	0.00%	0	0.00%	0	0.00%	0	0.26%
Equipment Malfunction	0	0.00%	0	0.00%	0	0.00%	0	0.00%	0	0.00%
Police Return	0	0.00%	0	0.00%	0	0.00%	0	0.00%	0	0.26%
ACS Expired	0	0.00%	2	2.14%	5	0.48%	0	0.48%	0	0.07%
Total	0	0.00%	2	2.99%	16	1.53%	1	1.53%	1	1.06%



A XEROX Company

Los Angeles County Approach Summary Report

Location 114: WB Batson @ Colima



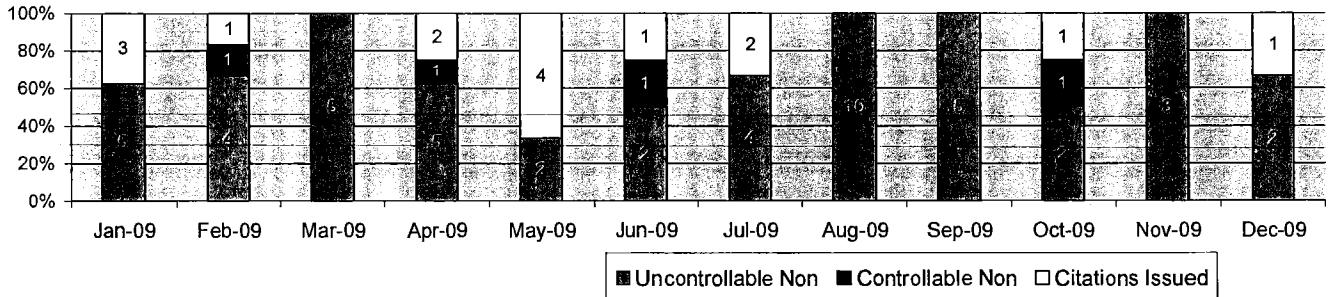
Events	Dec-09		3 Month Average		Year to Date Total		Year to Date Average		2008 Average	
	Quantity	% of Events	Quantity	% of Events	Quantity	% of Events	Quantity	% of Events	Quantity	% of Events
Non Violations	37	44.0%	36	43.9%	411	39.6%	34	39.6%	39	42.7%
Violations	47	56.0%	46	56.1%	627	60.4%	52	60.4%	54	57.3%
Total Events	84	100.0%	82	100.0%	1038	100.0%	87	100.0%	94	100.0%
Violations	Quantity	% of Viol	Quantity	% of Viol	Quantity	% of Viol	Quantity	% of Viol	Quantity	% of Viol
Uncont. Non-Issued Viol	24	51.1%	29	35.8%	351	56.0%	29	56.0%	26	9.1%
Cont. Non-Issued Viol	0	0.0%	1	1.2%	33	5.3%	3	5.3%	4	1.8%
Citations	23	48.9%	16	34.1%	243	38.8%	20	38.8%	25	45.5%
Vehicle Count-All Lanes	490,960		486,168		5,431,260		452,605		485,824	
Av. Violation Speed	27.36		29.95		30.13		30.13		30.37	
Av. Issued Speed	32.74		32.86		32.96		32.96		34.32	
Av. Violation Sec.	7.00		7.80		9.76		9.76		9.64	
Av. Issued Sec.	2.14		3.76		6.70		6.70		5.55	
Cal. Days/Enforc. Days	31	31	30	30	365	365	30	30	31	31
Daily Citation Yield	0.74	0.74	0.52	0.52	0.67	0.67	0.67	0.67	0.81	0.81
Cit /Viol. Iss. Rate	49%		34%		39%		39%		46%	
Controllable Iss. Rate	100%		94%		88%		88%		87%	
Non-Violations	Quantity	% of Events	Quantity	% of Events	Quantity	% of Events	Quantity	% of Events	Quantity	% of Events
Rear Axle Violation	0	0.00%	0	0.00%	0	0.00%	0	0.00%	0	0.00%
Right Turn	26	30.95%	24	29.67%	242	23.31%	20	23.31%	26	27.54%
No Violation Occurred	11	13.10%	12	14.23%	169	16.28%	14	16.28%	14	14.53%
Total Non Violations	37	44.05%	36	43.90%	411	39.60%	34	39.60%	39	42.07%
Non-Issued	Quantity	% of Viol	Quantity	% of Viol	Quantity	% of Viol	Quantity	% of Viol	Quantity	% of Viol
No Plate	0	0.00%	1	1.63%	17	1.64%	1	1.64%	1	1.16%
Out of State Plate	0	0.00%	0	0.00%	3	0.29%	0	0.29%	0	0.09%
Glare on Plate	0	0.00%	0	0.00%	2	0.19%	0	0.19%	0	0.00%
Illegible Plate	0	0.00%	0	0.00%	1	0.10%	0	0.10%	0	0.09%
Plate Obstructed	0	0.00%	0	0.00%	0	0.00%	0	0.00%	0	0.00%
Windshield Glare	1	2.13%	3	3.66%	50	4.82%	4	4.82%	2	1.87%
Driver Obstructed	0	0.00%	0	0.00%	1	0.10%	0	0.10%	0	0.18%
Car Obstructed	2	4.26%	0	0.00%	5	0.48%	0	0.48%	1	0.80%
Emergency Vehicle	19	40.43%	17	20.73%	195	18.79%	16	18.79%	16	17.38%
No Vehicle Match Found	0	0.00%	1	0.81%	4	0.39%	0	0.39%	0	0.09%
No DMV Match Found	0	0.00%	1	1.63%	20	1.93%	2	1.93%	2	2.58%
Police Expired	2	4.26%	6	7.32%	53	5.11%	4	5.11%	3	3.21%
Other	0	0.00%	0	0.00%	0	0.00%	0	0.00%	0	0.00%
Total	24	51.06%	29	35.77%	351	33.82%	29	33.82%	26	27.45%
Framing of Plate	0	0.00%	0	0.00%	1	0.10%	0	0.10%	0	0.00%
Focus / Clarity of Plate	0	0.00%	0	0.41%	6	0.58%	1	0.58%	1	0.80%
Dark Interior	0	0.00%	0	0.41%	18	1.73%	2	1.73%	1	0.71%
Framing of Driver	0	0.00%	0	0.00%	0	0.00%	0	0.00%	0	0.00%
Focus / Clarity of Driver	0	0.00%	0	0.00%	1	0.10%	0	0.10%	0	0.09%
Framing of Car	0	0.00%	0	0.00%	0	0.00%	0	0.00%	0	0.09%
Data Error	0	0.00%	0	0.00%	0	0.00%	0	0.00%	0	0.09%
Exposure	0	0.00%	0	0.00%	1	0.10%	0	0.10%	0	0.18%
Equipment Malfunction	0	0.00%	0	0.41%	1	0.10%	0	0.10%	1	1.34%
Police Return	0	0.00%	0	0.00%	5	0.48%	0	0.48%	1	0.53%
ACS Expired	0	0.00%	0	0.00%	0	0.00%	0	0.00%	0	0.09%
Total	0	0.00%	1	1.22%	33	3.18%	3	3.18%	4	3.92%



A XEROX Company

Los Angeles County Approach Summary Report

Location 131: NB Sepulveda @ Wilshire



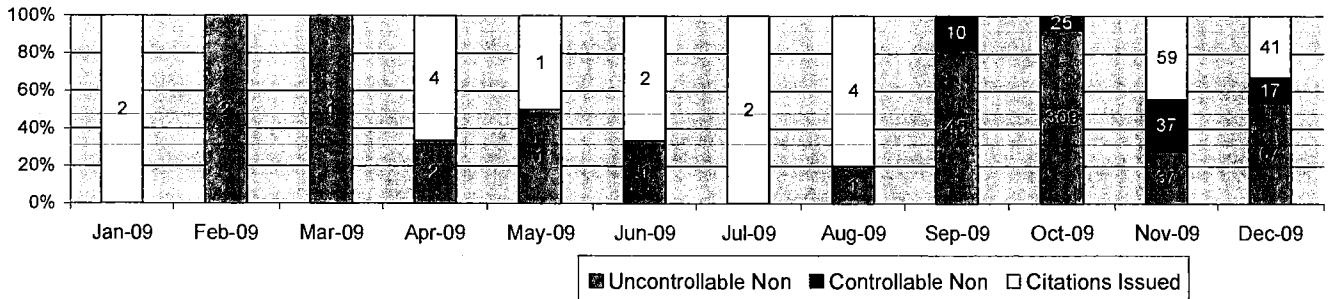
Events	Dec-09		3 Month Average		Year to Date Total		Year to Date Average		2008 Average	
	Quantity	% of Events	Quantity	% of Events	Quantity	% of Events	Quantity	% of Events	Quantity	% of Events
Non Violations	13	81.3%	15	78.9%	200	74.6%	17	74.6%	14	74.2%
Violations	3	18.8%	4	21.1%	68	25.4%	6	25.4%	6	25.8%
Total Events	16	100.0%	19	100.0%	268	100.0%	22	100.0%	20	100.0%
Violations	Quantity	% of Viol	Quantity	% of Viol	Quantity	% of Viol	Quantity	% of Viol	Quantity	% of Viol
Uncont. Non-Issued Viol	2	66.7%	3	17.5%	49	72.1%	4	72.1%	4	9.3%
Cont. Non-Issued Viol	0	0.0%	0	1.8%	4	5.9%	0	5.9%	0	2.6%
Citations	1	33.3%	0	8.3%	15	22.1%	1	22.1%	2	40.7%
Vehicle Count-All Lanes	142,874		130,326		1,636,659		136,388		124,981	
Av. Violation Speed	33.67		21.40		26.60		26.60		27.40	
Av. Issued Speed	35.00		11.00		24.38		24.38		29.90	
Av. Violation Sec.	17.37		9.87		15.29		15.29		10.48	
Av. Issued Sec.	0.30		0.23		1.01		1.01		2.34	
Cal. Days/Enforc. Days	31	31	30	25	365	348	30	29	31	31
Daily Citation Yield	0.03	0.03	0.01	0.01	0.04	0.04	0.04	0.04	0.06	0.06
Cit/Viol. Iss. Rate	33%		8%		22%		22%		31%	
Controllable Iss. Rate	100%		50%		79%		79%		81%	
Non-Violations	Quantity	% of Events	Quantity	% of Events	Quantity	% of Events	Quantity	% of Events	Quantity	% of Events
Rear Axle Violation	0	0.00%	0	0.00%	0	0.00%	0	0.00%	0	0.00%
Right Turn	4	25.00%	5	24.56%	74	27.61%	6	27.61%	6	28.45%
No Violation Occurred	9	56.25%	10	54.39%	126	47.01%	11	47.01%	8	41.42%
Total Non Violations	13	81.25%	15	78.95%	200	74.63%	17	74.63%	14	69.87%
Non-Issued	Quantity	% of Viol	Quantity	% of Viol	Quantity	% of Viol	Quantity	% of Viol	Quantity	% of Viol
No Plate	1	33.33%	0	1.75%	4	1.49%	0	1.49%	0	1.67%
Out of State Plate	0	0.00%	0	1.75%	3	1.12%	0	1.12%	0	0.42%
Glare on Plate	0	0.00%	0	0.00%	0	0.00%	0	0.00%	0	0.00%
Illegible Plate	0	0.00%	0	0.00%	0	0.00%	0	0.00%	0	0.00%
Plate Obstructed	0	0.00%	0	0.00%	0	0.00%	0	0.00%	0	0.00%
Windshield Glare	0	0.00%	0	0.00%	1	0.37%	0	0.37%	0	0.00%
Driver Obstructed	0	0.00%	0	0.00%	1	0.37%	0	0.37%	0	0.00%
Car Obstructed	0	0.00%	0	0.00%	1	0.37%	0	0.37%	0	0.00%
Emergency Vehicle	1	33.33%	3	14.04%	34	12.69%	3	12.69%	2	12.13%
No Vehicle Match Found	0	0.00%	0	0.00%	1	0.37%	0	0.37%	0	0.00%
No DMV Match Found	0	0.00%	0	0.00%	3	1.12%	0	1.12%	1	2.51%
Police Expired	0	0.00%	0	0.00%	1	0.37%	0	0.37%	0	2.09%
Other	0	0.00%	0	0.00%	0	0.00%	0	0.00%	0	0.00%
Total	2	66.67%	3	17.54%	49	18.28%	4	18.28%	4	18.83%
Framing of Plate	0	0.00%	0	0.00%	0	0.00%	0	0.00%	0	0.42%
Focus / Clarity of Plate	0	0.00%	0	1.75%	1	0.37%	0	0.37%	0	0.00%
Dark Interior	0	0.00%	0	0.00%	0	0.00%	0	0.00%	0	0.00%
Framing of Driver	0	0.00%	0	0.00%	2	0.75%	0	0.75%	0	0.84%
Focus / Clarity of Driver	0	0.00%	0	0.00%	0	0.00%	0	0.00%	0	0.00%
Framing of Car	0	0.00%	0	0.00%	1	0.37%	0	0.37%	0	0.42%
Data Error	0	0.00%	0	0.00%	0	0.00%	0	0.00%	0	0.42%
Exposure	0	0.00%	0	0.00%	0	0.00%	0	0.00%	0	0.00%
Equipment Malfunction	0	0.00%	0	0.00%	0	0.00%	0	0.00%	0	0.00%
Police Return	0	0.00%	0	0.00%	0	0.00%	0	0.00%	0	0.00%
ACS Expired	0	0.00%	0	0.00%	0	0.00%	0	0.00%	0	0.00%
Total	0	0.00%	0	1.75%	4	1.49%	0	1.49%	0	2.09%



A XEROX Company

Los Angeles County Approach Summary Report

Location 132: SB Sepulveda @ Wilshire



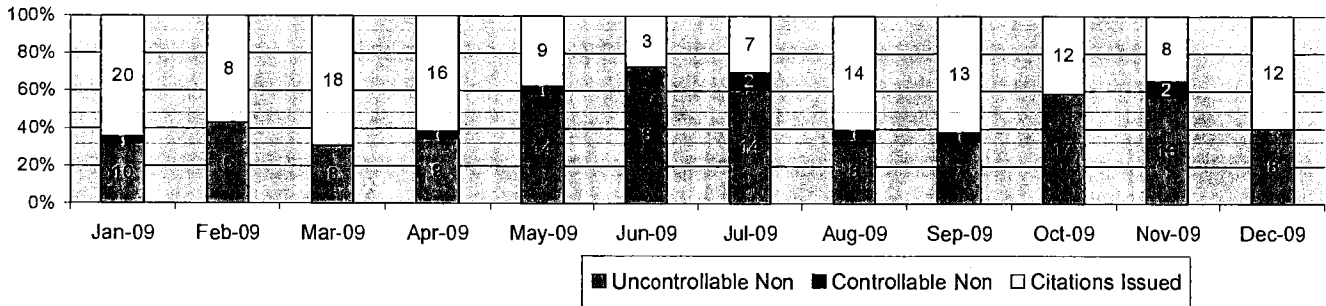
Events	Dec-09		3 Month Average		Year to Date Total		Year to Date Average		2008 Average	
	Quantity	% of Events	Quantity	% of Events	Quantity	% of Events	Quantity	% of Events	Quantity	% of Events
Non Violations	243	66.0%	891	83.7%	6284	90.4%	524	90.4%	452	98.7%
Violations	125	34.0%	174	16.3%	670	9.6%	56	9.6%	3	1.3%
Total Events	368	100.0%	1065	100.0%	6954	100.0%	580	100.0%	455	100.0%
Violations	Quantity	% of Viol	Quantity	% of Viol	Quantity	% of Viol	Quantity	% of Viol	Quantity	% of Viol
Uncont. Non-Issued Viol	67	53.6%	133	12.4%	466	69.6%	39	69.6%	2	10.3%
Cont. Non-Issued Viol	17	13.6%	30	2.8%	89	13.3%	7	13.3%	1	6.4%
Citations	41	32.8%	20	11.3%	115	17.2%	10	17.2%	0	16.7%
Vehicle Count-All Lanes	167,139		160,758		2,300,918		191,743		177,077	
Av. Violation Speed	17.53		12.88		23.73		23.73		21.27	
Av. Issued Speed	17.76		16.38		23.45		23.45		15.00	
Av. Violation Sec.	10.82		14.96		20.17		20.17		24.33	
Av. Issued Sec.	8.97		12.05		13.16		13.16		11.80	
Cal. Days/Enforc. Days	31	31	30	30	365	365	30	30	31	31
Daily Citation Yield	1.32	1.32	0.65	0.65	0.32	0.32	0.32	0.32	0.01	0.01
Cit/Viol. Iss. Rate	33%		11%		17%		17%		14%	
Controllable Iss. Rate	71%		40%		56%		56%		33%	
Non-Violations	Quantity	% of Events	Quantity	% of Events	Quantity	% of Events	Quantity	% of Events	Quantity	% of Events
Rear Axle Violation	0	0.00%	0	0.00%	1	0.01%	0	0.01%	0	0.00%
Right Turn	1	0.27%	85	8.02%	2338	33.62%	195	33.62%	266	58.42%
No Violation Occurred	242	65.76%	805	75.64%	3945	56.73%	329	56.73%	186	40.90%
Total Non Violations	243	66.03%	891	83.66%	6284	90.37%	524	90.37%	452	99.32%
Non Issued	Quantity	% of Viol	Quantity	% of Viol	Quantity	% of Viol	Quantity	% of Viol	Quantity	% of Viol
No Plate	5	4.00%	10	0.94%	36	0.52%	3	0.52%	0	0.00%
Out of State Plate	2	1.60%	5	0.44%	16	0.23%	1	0.23%	0	0.00%
Glare on Plate	0	0.00%	1	0.09%	3	0.04%	0	0.04%	0	0.00%
Illegible Plate	0	0.00%	2	0.22%	7	0.10%	1	0.10%	0	0.00%
Plate Obstructed	0	0.00%	1	0.09%	3	0.04%	0	0.04%	0	0.00%
Windshield Glare	10	8.00%	1	0.09%	13	0.19%	1	0.20%	0	0.00%
Driver Obstructed	1	0.80%	2	0.16%	6	0.09%	1	0.09%	0	0.00%
Car Obstructed	6	4.80%	13	1.19%	46	0.66%	4	0.66%	0	0.04%
Emergency Vehicle	0	0.00%	2	0.19%	8	0.12%	1	0.12%	1	0.22%
No Vehicle Match Found	0	0.00%	1	0.09%	3	0.04%	0	0.04%	0	0.00%
No DMV Match Found	8	6.40%	9	0.81%	34	0.49%	3	0.49%	0	0.05%
Police Expired	35	28.00%	6	0.52%	48	0.69%	4	0.75%	0	0.05%
Other	0	0.00%	81	7.61%	243	3.49%	20	3.49%	0	0.04%
Total	67	53.60%	133	12.45%	466	6.70%	39	6.78%	2	0.40%
Framing of Plate	0	0.00%	0	0.00%	0	0.00%	0	0.00%	0	0.00%
Focus / Clarity of Plate	0	0.00%	2	0.19%	6	0.09%	1	0.09%	0	0.00%
Dark Interior	14	11.20%	1	0.13%	18	0.26%	2	0.26%	0	0.00%
Framing of Driver	0	0.00%	0	0.00%	0	0.00%	0	0.00%	0	0.00%
Focus / Clarity of Driver	0	0.00%	0	0.00%	0	0.00%	0	0.00%	0	0.00%
Framing of Car	0	0.00%	2	0.16%	5	0.07%	0	0.07%	0	0.04%
Data Error	0	0.00%	0	0.03%	1	0.01%	0	0.01%	0	0.00%
Exposure	0	0.00%	0	0.00%	0	0.00%	0	0.00%	1	0.15%
Equipment Malfunction	0	0.00%	18	1.69%	36	0.52%	3	0.56%	0	0.00%
Police Return	2	1.60%	7	0.63%	22	0.32%	2	0.32%	0	0.00%
ACS Expired	1	0.80%	0	0.00%	1	0.01%	0	0.02%	0	0.00%
Total	17	13.60%	30	2.82%	89	1.28%	8	1.33%	1	0.18%



A XEROX Company

Los Angeles County Approach Summary Report

Location 133: EB Wilshire @ Sepulveda



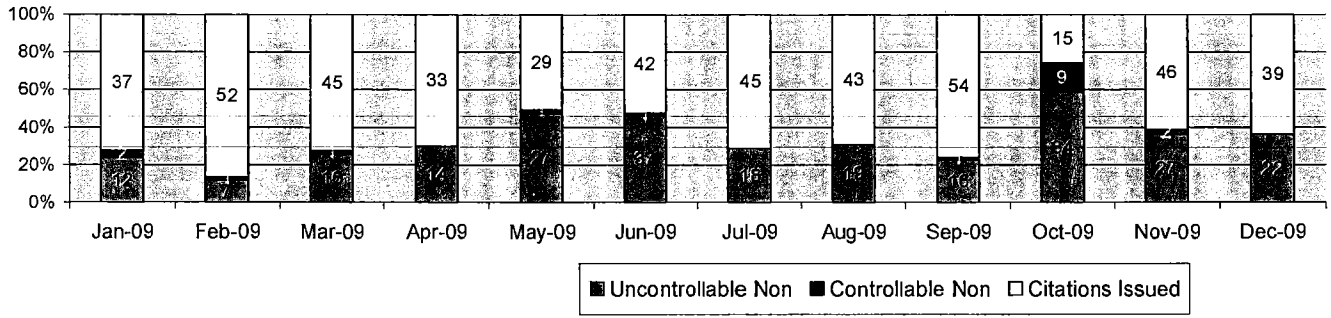
Events	Dec-09		3 Month Average		Year to Date Total		Year to Date Average		2008 Average	
	Quantity	% of Events	Quantity	% of Events	Quantity	% of Events	Quantity	% of Events	Quantity	% of Events
Non Violations	148	88.1%	189	88.6%	2231	89.2%	186	89.2%	239	89.1%
Violations	20	11.9%	24	11.4%	271	10.8%	23	10.8%	29	10.9%
Total Events	168	100.0%	213	100.0%	2502	100.0%	209	100.0%	268	100.0%
Violations	Quantity	% of Viol	Quantity	% of Viol	Quantity	% of Viol	Quantity	% of Viol	Quantity	% of Viol
Uncont. Non-Issued Viol	8	40.0%	12	5.8%	122	45.0%	10	45.0%	14	7.4%
Cont. Non-Issued Viol	0	0.0%	1	0.5%	9	3.3%	1	3.3%	2	2.3%
Citations	12	60.0%	11	45.2%	140	51.7%	12	51.7%	14	51.6%
Vehicle Count-All Lanes	717,971		763,770		9,286,484		773,874		547,559	
Av. Violation Speed	32.05		29.44		29.57		29.57		28.21	
Av. Issued Speed	34.75		32.11		31.04		31.04		29.81	
Av. Violation Sec.	0.99		3.71		2.87		2.87		2.10	
Av. Issued Sec.	0.93		1.37		1.23		1.23		1.09	
Cal. Days/Enforc. Days	31	31	30	30	365	365	30	30	31	31
Daily Citation Yield	0.39	0.39	0.36	0.36	0.38	0.38	0.38	0.38	0.46	0.46
Cit/Viol. Iss. Rate	60%		45%		52%		52%		48%	
Controllable Iss. Rate	100%		92%		94%		94%		90%	
Non-Violations	Quantity	% of Events	Quantity	% of Events	Quantity	% of Events	Quantity	% of Events	Quantity	% of Events
Rear Axle Violation	0	0.00%	0	0.00%	2	0.08%	0	0.08%	0	0.09%
Right Turn	70	41.67%	75	35.16%	1002	40.05%	84	40.05%	98	36.44%
No Violation Occurred	78	46.43%	114	53.44%	1227	49.04%	102	49.04%	141	52.67%
Total Non Violations	148	88.10%	189	88.59%	2231	89.17%	186	89.17%	239	89.21%
Non-Issued	Quantity	% of Viol	Quantity	% of Viol	Quantity	% of Viol	Quantity	% of Viol	Quantity	% of Viol
No Plate	1	5.00%	1	0.63%	11	0.44%	1	0.44%	2	0.75%
Out of State Plate	0	0.00%	1	0.31%	6	0.24%	1	0.24%	0	0.03%
Glare on Plate	0	0.00%	0	0.00%	0	0.00%	0	0.00%	0	0.00%
Illegible Plate	0	0.00%	0	0.00%	0	0.00%	0	0.00%	0	0.00%
Plate Obstructed	0	0.00%	0	0.00%	0	0.00%	0	0.00%	0	0.03%
Windshield Glare	1	5.00%	0	0.00%	15	0.60%	1	0.60%	3	1.12%
Driver Obstructed	1	5.00%	0	0.00%	1	0.04%	0	0.04%	0	0.09%
Car Obstructed	0	0.00%	0	0.00%	6	0.24%	1	0.24%	1	0.31%
Emergency Vehicle	1	5.00%	5	2.19%	37	1.48%	3	1.48%	3	0.93%
No Vehicle Match Found	0	0.00%	0	0.16%	3	0.12%	0	0.12%	0	0.00%
No DMV Match Found	1	5.00%	1	0.63%	17	0.68%	1	0.68%	2	0.62%
Police Expired	3	15.00%	4	1.88%	26	1.04%	2	1.04%	3	1.09%
Other	0	0.00%	0	0.00%	0	0.00%	0	0.00%	0	0.06%
Total	8	40.00%	12	5.78%	122	4.88%	10	4.88%	14	5.04%
Framing of Plate	0	0.00%	0	0.00%	0	0.00%	0	0.00%	0	0.03%
Focus / Clarity of Plate	0	0.00%	0	0.00%	3	0.12%	0	0.12%	1	0.34%
Dark Interior	0	0.00%	0	0.00%	1	0.04%	0	0.04%	0	0.03%
Framing of Driver	0	0.00%	0	0.00%	0	0.00%	0	0.00%	0	0.00%
Focus / Clarity of Driver	0	0.00%	0	0.00%	0	0.00%	0	0.00%	0	0.00%
Framing of Car	0	0.00%	0	0.16%	3	0.12%	0	0.12%	0	0.00%
Data Error	0	0.00%	0	0.00%	0	0.00%	0	0.00%	0	0.12%
Exposure	0	0.00%	0	0.16%	1	0.04%	0	0.04%	0	0.03%
Equipment Malfunction	0	0.00%	0	0.16%	1	0.04%	0	0.04%	0	0.00%
Police Return	0	0.00%	0	0.00%	0	0.00%	0	0.00%	0	0.00%
ACS Expired	0	0.00%	0	0.00%	0	0.00%	0	0.00%	0	0.00%
Total	0	0.00%	1	0.47%	9	0.36%	1	0.36%	2	0.56%



A Xerox Company

Los Angeles County Approach Summary Report

Location 134: WB Wilshire @ Sepulveda



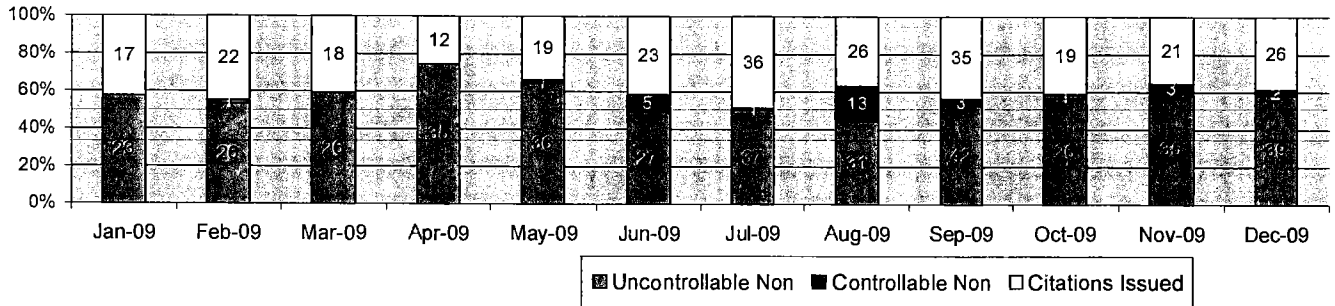
Events	Dec-09		3 Month Average		Year to Date Total		Year to Date Average		2008 Average	
	Quantity	% of Events	Quantity	% of Events	Quantity	% of Events	Quantity	% of Events	Quantity	% of Events
Non Violations	152	71.4%	167	71.1%	2075	73.5%	173	73.5%	161	74.2%
Violations	61	28.6%	68	28.9%	747	26.5%	62	26.5%	59	25.8%
Total Events	213	100.0%	235	100.0%	2822	100.0%	235	100.0%	220	100.0%
Violations	Quantity	% of Viol	Quantity	% of Viol	Quantity	% of Viol	Quantity	% of Viol	Quantity	% of Viol
Uncont. Non-Issued Viol	22	36.1%	26	10.9%	249	33.3%	21	33.3%	21	4.9%
Cont. Non-Issued Viol	0	0.0%	4	1.7%	18	2.4%	2	2.4%	2	2.1%
Citations	39	63.9%	38	56.4%	480	64.3%	40	64.3%	35	64.7%
Vehicle Count-All Lanes	507,194		719,022		7,316,005		609,667		646,745	
Av. Violation Speed	33.51		33.82		33.80		33.80		34.69	
Av. Issued Speed	33.05		34.98		34.12		34.12		34.76	
Av. Violation Sec.	1.64		3.44		2.24		2.24		1.40	
Av. Issued Sec.	1.65		2.87		2.10		2.10		1.15	
Cal. Days/Enforc. Days	31	31	30	30	365	365	30	30	31	31
Daily Citation Yield	1.26	1.26	1.26	1.26	1.32	1.32	1.32	1.32	1.16	1.16
Cit./Viol. Iss. Rate	64%		56%		64%		64%		60%	
Controllable Iss. Rate	100%		91%		96%		96%		95%	
Non-Violations	Quantity	% of Events	Quantity	% of Events	Quantity	% of Events	Quantity	% of Events	Quantity	% of Events
Rear Axle Violation	1	0.47%	0	0.00%	5	0.18%	0	0.18%	0	0.04%
Right Turn	81	38.03%	68	28.75%	1152	40.82%	96	40.82%	96	43.63%
No Violation Occurred	70	32.86%	100	42.35%	918	32.53%	77	32.53%	65	29.64%
Total Non Violations	152	71.36%	167	71.10%	2075	73.53%	173	73.53%	161	73.31%
Non-Issued	Quantity	% of Viol	Quantity	% of Viol	Quantity	% of Viol	Quantity	% of Viol	Quantity	% of Viol
No Plate	2	3.28%	1	0.57%	24	0.85%	2	0.85%	3	1.14%
Out of State Plate	3	4.92%	2	0.99%	38	1.35%	3	1.35%	1	0.34%
Glare on Plate	0	0.00%	0	0.00%	0	0.00%	0	0.00%	0	0.00%
Illegible Plate	0	0.00%	1	0.28%	2	0.07%	0	0.07%	0	0.08%
Plate Obstructed	0	0.00%	0	0.00%	1	0.04%	0	0.04%	0	0.00%
Windshield Glare	0	0.00%	0	0.00%	29	1.03%	2	1.03%	6	2.92%
Driver Obstructed	0	0.00%	1	0.57%	7	0.25%	1	0.25%	0	0.08%
Car Obstructed	1	1.64%	0	0.14%	4	0.14%	0	0.14%	0	0.08%
Emergency Vehicle	1	1.64%	4	1.84%	20	0.71%	2	0.71%	1	0.64%
No Vehicle Match Found	0	0.00%	0	0.14%	5	0.18%	0	0.18%	0	0.00%
No DMV Match Found	3	4.92%	4	1.70%	37	1.31%	3	1.31%	4	1.67%
Police Expired	12	19.67%	11	4.53%	81	2.87%	7	2.87%	6	2.73%
Other	0	0.00%	0	0.14%	1	0.04%	0	0.04%	0	0.04%
Total	22	36.07%	26	10.91%	249	8.82%	21	8.82%	21	9.70%
Framing of Plate	0	0.00%	0	0.00%	0	0.00%	0	0.00%	0	0.00%
Focus / Clarity of Plate	0	0.00%	0	0.14%	2	0.07%	0	0.07%	0	0.15%
Dark Interior	0	0.00%	0	0.00%	0	0.00%	0	0.00%	0	0.00%
Framing of Driver	0	0.00%	0	0.00%	0	0.00%	0	0.00%	0	0.00%
Focus / Clarity of Driver	0	0.00%	0	0.00%	0	0.00%	0	0.00%	0	0.00%
Framing of Car	0	0.00%	0	0.00%	0	0.00%	0	0.00%	0	0.00%
Data Error	0	0.00%	3	1.27%	9	0.32%	1	0.32%	1	0.45%
Exposure	0	0.00%	0	0.00%	2	0.07%	0	0.07%	0	0.04%
Equipment Malfunction	0	0.00%	0	0.00%	0	0.00%	0	0.00%	0	0.19%
Police Return	0	0.00%	0	0.14%	3	0.11%	0	0.11%	0	0.00%
ACS Expired	0	0.00%	0	0.14%	2	0.07%	0	0.07%	0	0.08%
Total	0	0.00%	4	1.70%	18	0.64%	2	0.64%	2	0.91%



A XEROX Company

Los Angeles County Approach Summary Report

Location 144: WB Wilshire @ Sepulveda



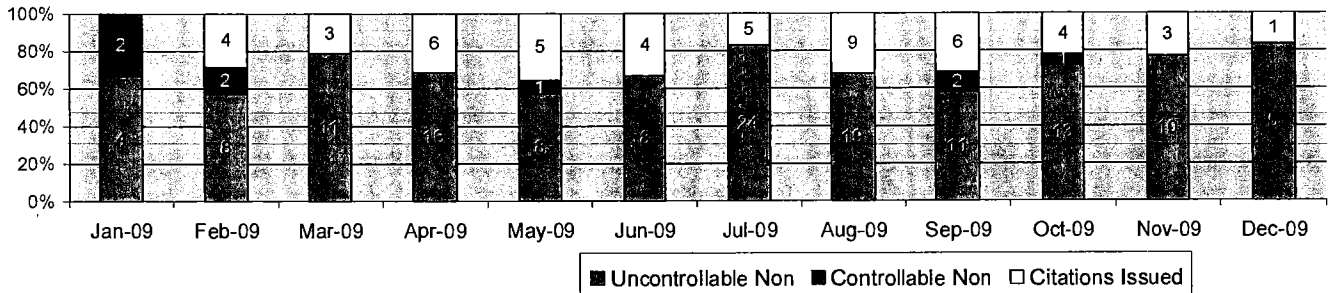
Events	Dec-09		3 Month Average		Year to Date Total		Year to Date Average		2008 Average	
	Quantity	% of Events	Quantity	% of Events	Quantity	% of Events	Quantity	% of Events	Quantity	% of Events
Non Violations	77	53.5%	110	64.1%	932	57.6%	78	57.6%	97	58.0%
Violations	67	46.5%	62	35.9%	687	42.4%	57	42.4%	62	42.0%
Total Events	144	100.0%	172	100.0%	1619	100.0%	135	100.0%	159	100.0%
Violations										
	Quantity	% of Viol	Quantity	% of Viol	Quantity	% of Viol	Quantity	% of Viol	Quantity	% of Viol
Uncont. Non-Issued Viol	39	58.2%	34	20.0%	383	55.7%	32	55.7%	35	9.0%
Cont. Non-Issued Viol	2	3.0%	2	1.4%	30	4.4%	3	4.4%	3	3.0%
Citations	26	38.8%	25	40.5%	274	39.9%	23	39.9%	24	39.9%
Vehicle Count-All Lanes										
	697,880		723,403		8,692,412		724,368		700,036	
Av. Violation Speed	32.30		32.80		32.27		32.27		33.78	
Av. Issued Speed	36.81		36.64		36.54		36.54		37.61	
Av. Violation Sec.	5.92		4.43		4.29		4.29		3.35	
Av. Issued Sec.	3.15		1.72		1.37		1.37		1.01	
Cal. Days/Enforc. Days	31	31	30	30	365	365	30	30	31	31
Daily Citation Yield	0.84	0.84	0.82	0.82	0.75	0.75	0.75	0.75	0.78	0.78
Cit / Viol. Iss. Rate		39%		41%		40%		40%		38%
Controllable Iss. Rate		93%		91%		90%		90%		88%
Non-Violations										
	Quantity	% of Events	Quantity	% of Events	Quantity	% of Events	Quantity	% of Events	Quantity	% of Events
Rear Axle Violation	0	0.00%	0	0.00%	2	0.12%	0	0.12%	1	0.31%
Right Turn	0	0.00%	32	18.64%	97	5.99%	8	5.99%	10	6.25%
No Violation Occurred	77	53.47%	78	45.44%	833	51.45%	69	51.45%	86	54.38%
Total Non Violations	77	53.47%	110	64.08%	932	57.57%	78	57.57%	97	60.94%
Non-Issued										
	Quantity	% of Viol	Quantity	% of Viol	Quantity	% of Viol	Quantity	% of Viol	Quantity	% of Viol
No Plate	1	1.49%	3	1.55%	28	1.73%	2	1.73%	3	2.10%
Out of State Plate	2	2.99%	2	1.36%	22	1.36%	2	1.36%	1	0.42%
Glare on Plate	0	0.00%	0	0.00%	0	0.00%	0	0.00%	0	0.00%
Illegible Plate	0	0.00%	1	0.39%	3	0.19%	0	0.19%	0	0.05%
Plate Obstructed	1	1.49%	0	0.00%	2	0.12%	0	0.12%	0	0.05%
Windshield Glare	1	1.49%	1	0.58%	32	1.98%	3	1.98%	5	3.04%
Driver Obstructed	1	1.49%	2	0.97%	19	1.17%	2	1.17%	2	1.05%
Car Obstructed	1	1.49%	0	0.00%	6	0.37%	1	0.37%	0	0.05%
Emergency Vehicle	25	37.31%	15	8.93%	190	11.74%	16	11.74%	15	9.19%
No Vehicle Match Found	0	0.00%	0	0.00%	0	0.00%	0	0.00%	0	0.10%
No DMV Match Found	2	2.99%	3	1.55%	33	2.04%	3	2.04%	3	2.05%
Police Expired	5	7.46%	8	4.47%	45	2.78%	4	2.78%	6	3.88%
Other	0	0.00%	0	0.19%	3	0.19%	0	0.19%	0	0.10%
Total	39	58.21%	34	20.00%	383	23.66%	32	23.66%	35	22.10%
Framing of Plate	0	0.00%	0	0.00%	0	0.00%	0	0.00%	0	0.10%
Focus / Clarity of Plate	0	0.00%	1	0.58%	4	0.25%	0	0.25%	1	0.58%
Dark Interior	1	1.49%	1	0.39%	8	0.49%	1	0.49%	0	0.05%
Framing of Driver	0	0.00%	0	0.00%	0	0.00%	0	0.00%	0	0.05%
Focus / Clarity of Driver	0	0.00%	0	0.00%	0	0.00%	0	0.00%	0	0.00%
Framing of Car	1	1.49%	0	0.00%	2	0.12%	0	0.12%	0	0.05%
Data Error	0	0.00%	0	0.00%	0	0.00%	0	0.00%	1	0.68%
Exposure	0	0.00%	0	0.00%	2	0.12%	0	0.12%	0	0.16%
Equipment Malfunction	0	0.00%	0	0.00%	11	0.68%	1	0.68%	0	0.21%
Police Return	0	0.00%	0	0.19%	2	0.12%	0	0.12%	0	0.05%
ACS Expired	0	0.00%	0	0.19%	1	0.06%	0	0.06%	0	0.10%
Total	2	2.99%	2	1.36%	30	1.85%	3	1.85%	3	2.05%



A **AEROK** Company

Los Angeles County Approach Summary Report

Location 153: EB Whittier Boulevard @ Atlantic Boulevard



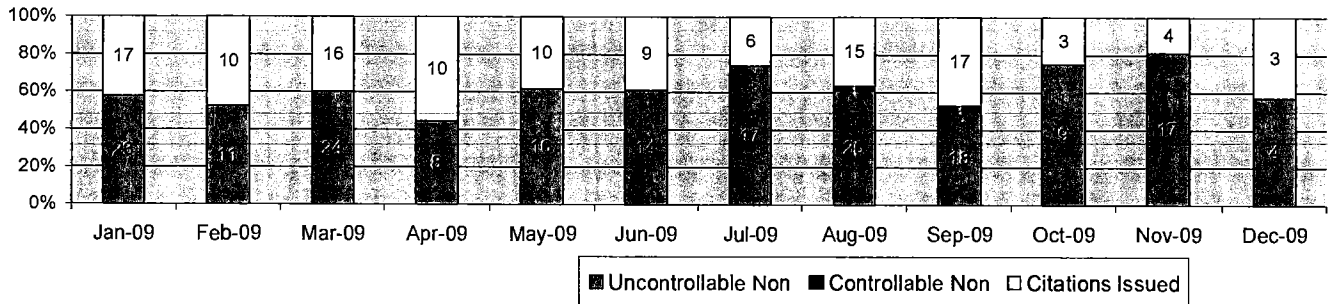
Events	Dec-09		3 Month Average		Year to Date Total		Year to Date Average		2008 Average	
	Quantity	% of Events	Quantity	% of Events	Quantity	% of Events	Quantity	% of Events	Quantity	% of Events
Non Violations	6	50.0%	29	63.8%	311	61.8%	26	61.8%	33	66.8%
Violations	6	50.0%	17	36.2%	192	38.2%	16	38.2%	18	33.2%
Total Events	12	100.0%	46	100.0%	503	100.0%	42	100.0%	51	100.0%
Violations	Quantity	% of Viol	Quantity	% of Viol	Quantity	% of Viol	Quantity	% of Viol	Quantity	% of Viol
Uncont. Non-Issued Viol	5	83.3%	11	24.6%	134	69.8%	11	69.8%	11	12.5%
Cont. Non-Issued Viol	0	0.0%	1	2.2%	8	4.2%	1	4.2%	1	0.8%
Citations	1	16.7%	4	26.0%	50	26.0%	4	26.0%	6	33.8%
Vehicle Count-All Lanes	42,770		242,013		2,806,740		233,895		249,912	
Av. Violation Speed	23.17		28.62		29.00		29.00		30.80	
Av. Issued Speed	35.00		33.55		31.20		31.20		35.76	
Av. Violation Sec.	7.13		8.74		7.67		7.67		4.21	
Av. Issued Sec.	0.60		0.47		0.91		0.91		1.41	
Cal. Days/Enforc. Days	31	31	30	28	365	357	30	30	31	31
Daily Citation Yield	0.03	0.03	0.14	0.16	0.14	0.14	0.14	0.14	0.18	0.18
Cit/Viol. Iss. Rate	17%		26%		26%		26%		31%	
Controllable Iss. Rate	100%		81%		86%		86%		84%	
Non-Violations	Quantity	% of Events	Quantity	% of Events	Quantity	% of Events	Quantity	% of Events	Quantity	% of Events
Rear Axle Violation	0	0.00%	0	0.00%	0	0.00%	0	0.00%	0	0.16%
Right Turn	1	8.33%	9	18.84%	85	16.90%	7	16.90%	11	21.58%
No Violation Occurred	5	41.67%	21	44.93%	226	44.93%	19	44.93%	22	42.50%
Total Non Violations	6	50.00%	29	63.77%	311	61.83%	26	61.83%	33	64.25%
Non-Issued	Quantity	% of Viol	Quantity	% of Viol	Quantity	% of Viol	Quantity	% of Viol	Quantity	% of Viol
No Plate	0	0.00%	0	0.72%	3	0.60%	0	0.60%	1	1.81%
Out of State Plate	0	0.00%	0	0.00%	1	0.20%	0	0.20%	0	0.00%
Glare on Plate	0	0.00%	0	0.00%	0	0.00%	0	0.00%	0	0.00%
Illegible Plate	0	0.00%	0	0.00%	0	0.00%	0	0.00%	0	0.16%
Plate Obstructed	0	0.00%	0	0.72%	1	0.20%	0	0.20%	0	0.00%
Windshield Glare	0	0.00%	0	0.72%	7	1.39%	1	1.39%	1	1.15%
Driver Obstructed	0	0.00%	0	0.00%	0	0.00%	0	0.00%	0	0.66%
Car Obstructed	0	0.00%	0	0.72%	6	1.19%	1	1.19%	0	0.49%
Emergency Vehicle	0	0.00%	9	20.29%	96	19.09%	8	19.09%	7	14.00%
No Vehicle Match Found	5	83.33%	0	0.00%	5	0.99%	0	0.99%	0	0.00%
No DMV Match Found	0	0.00%	0	0.00%	9	1.79%	1	1.79%	2	3.95%
Police Expired	0	0.00%	1	1.45%	6	1.19%	1	1.19%	0	0.33%
Other	0	0.00%	0	0.00%	0	0.00%	0	0.00%	0	0.00%
Total	5	83.33%	11	24.64%	134	26.64%	11	26.64%	11	22.57%
Framing of Plate	0	0.00%	0	0.00%	0	0.00%	0	0.00%	0	0.00%
Focus / Clarity of Plate	0	0.00%	0	0.00%	1	0.20%	0	0.20%	0	0.49%
Dark Interior	0	0.00%	1	1.45%	5	0.99%	0	0.99%	0	0.00%
Framing of Driver	0	0.00%	0	0.00%	0	0.00%	0	0.00%	0	0.00%
Focus / Clarity of Driver	0	0.00%	0	0.72%	2	0.40%	0	0.40%	0	0.00%
Framing of Car	0	0.00%	0	0.00%	0	0.00%	0	0.00%	0	0.16%
Data Error	0	0.00%	0	0.00%	0	0.00%	0	0.00%	0	0.00%
Exposure	0	0.00%	0	0.00%	0	0.00%	0	0.00%	0	0.49%
Equipment Malfunction	0	0.00%	0	0.00%	0	0.00%	0	0.00%	1	0.99%
Police Return	0	0.00%	0	0.00%	0	0.00%	0	0.00%	0	0.00%
ACS Expired	0	0.00%	0	0.00%	0	0.00%	0	0.00%	0	0.00%
Total	0	0.00%	1	2.17%	8	1.59%	1	1.59%	1	2.14%



A XEROX Company

Los Angeles County Approach Summary Report

Location 154: WB Whittier Boulevard @ Atlantic Boulevard



■ Uncontrollable Non ■ Controllable Non □ Citations Issued

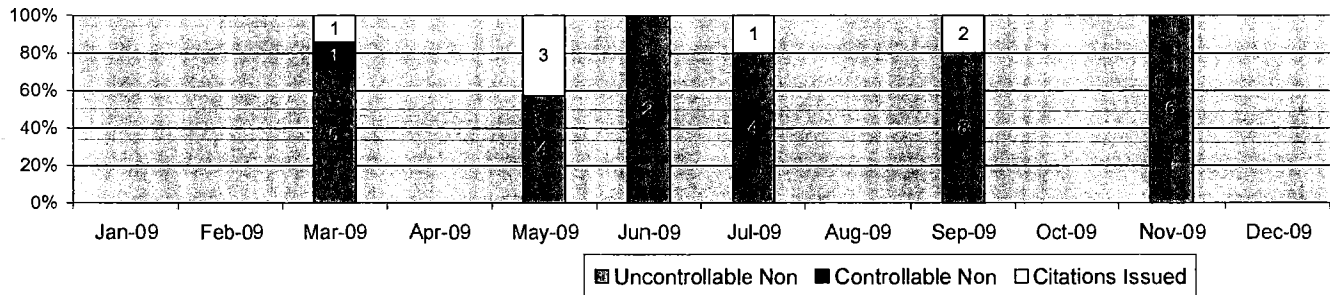
Events	Dec-09		3 Month Average		Year to Date Total		Year to Date Average		2008 Average		
	Quantity	% of Events	Quantity	% of Events	Quantity	% of Events	Quantity	% of Events	Quantity	% of Events	
Non Violations	3	30.0%	16	41.0%	178	36.6%	15	36.6%	19	28.0%	
Violations	7	70.0%	23	59.0%	308	63.4%	26	63.4%	32	72.0%	
Total Events	10	100.0%	39	100.0%	486	100.0%	41	100.0%	51	100.0%	
Violations		Quantity	% of Viol	Quantity	% of Viol	Quantity	% of Viol	Quantity	% of Viol	Quantity	% of Viol
Uncont. Non-Issued Viol	4	57.1%	15	37.6%	186	60.4%	16	60.4%	18	10.1%	
Cont. Non-Issued Viol	0	0.0%	0	0.9%	2	0.6%	0	0.6%	1	1.0%	
Citations	3	42.9%	8	34.8%	120	39.0%	10	39.0%	13	44.5%	
Vehicle Count-All Lanes	68,149		236,872		3,154,817		262,901		360,094		
Av. Violation Speed	27.71		32.56		31.94		31.94		32.52		
Av. Issued Speed	32.33		36.73		36.31		36.31		35.42		
Av. Violation Sec.	6.31		4.08		4.30		4.30		3.43		
Av. Issued Sec.	0.23		0.35		0.97		0.97		0.65		
Cal. Days/Enforc. Days	31	31	30	28	365	357	30	30	31	31	
Daily Citation Yield	0.10	0.10	0.26	0.29	0.33	0.34	0.33	0.34	0.43	0.43	
Cit /Viol. Iss. Rate	43%		35%		39%		39%		41%		
Controllable Iss. Rate	100%		96%		98%		98%		92%		
Non-Violations	Dec-09		3 Month Average		Year to Date Total		Year to Date Average		2008 Average		
	Quantity	% of Events	Quantity	% of Events	Quantity	% of Events	Quantity	% of Events	Quantity	% of Events	
Rear Axle Violation	0	0.00%	0	0.00%	0	0.00%	0	0.00%	0	0.00%	
Right Turn	1	10.00%	2	5.13%	34	7.00%	3	7.00%	5	9.05%	
No Violation Occurred	2	20.00%	14	35.90%	144	29.63%	12	29.63%	14	27.80%	
Total Non Violations	3	30.00%	16	41.03%	178	36.63%	15	36.63%	19	36.84%	
Non-Issued	Quantity	% of Viol	Quantity	% of Viol	Quantity	% of Viol	Quantity	% of Viol	Quantity	% of Viol	
	0	0.00%	1	1.71%	12	2.47%	1	2.47%	1	1.81%	
Out of State Plate	0	0.00%	0	0.85%	2	0.41%	0	0.41%	0	0.33%	
Glare on Plate	0	0.00%	0	0.00%	0	0.00%	0	0.00%	0	0.00%	
Illegible Plate	0	0.00%	0	0.00%	1	0.21%	0	0.21%	0	0.00%	
Plate Obstructed	0	0.00%	0	0.00%	1	0.21%	0	0.21%	0	0.49%	
Windshield Glare	0	0.00%	0	0.00%	4	0.82%	0	0.82%	1	1.48%	
Driver Obstructed	0	0.00%	0	0.00%	2	0.41%	0	0.41%	0	0.49%	
Car Obstructed	0	0.00%	1	1.71%	14	2.88%	1	2.88%	1	1.15%	
Emergency Vehicle	4	57.14%	6	16.24%	98	20.16%	8	20.16%	10	18.91%	
No Vehicle Match Found	0	0.00%	0	0.00%	2	0.41%	0	0.41%	0	0.33%	
No DMV Match Found	0	0.00%	4	10.26%	34	7.00%	3	7.00%	3	5.59%	
Police Expired	0	0.00%	3	6.84%	16	3.29%	1	3.29%	2	4.44%	
Other	0	0.00%	0	0.00%	0	0.00%	0	0.00%	0	0.00%	
Total	4	57.14%	15	37.61%	186	38.27%	16	38.27%	18	35.03%	
Framing of Plate	0	0.00%	0	0.00%	0	0.00%	0	0.00%	0	0.00%	
Focus / Clarity of Plate	0	0.00%	0	0.00%	0	0.00%	0	0.00%	0	0.66%	
Dark Interior	0	0.00%	0	0.00%	0	0.00%	0	0.00%	0	0.00%	
Framing of Driver	0	0.00%	0	0.00%	0	0.00%	0	0.00%	0	0.00%	
Focus / Clarity of Driver	0	0.00%	0	0.00%	0	0.00%	0	0.00%	0	0.16%	
Framing of Car	0	0.00%	0	0.00%	0	0.00%	0	0.00%	0	0.00%	
Data Error	0	0.00%	0	0.00%	0	0.00%	0	0.00%	0	0.00%	
Exposure	0	0.00%	0	0.00%	0	0.00%	0	0.00%	1	1.48%	
Equipment Malfunction	0	0.00%	0	0.00%	0	0.00%	0	0.00%	0	0.00%	
Police Return	0	0.00%	0	0.85%	1	0.21%	0	0.21%	0	0.00%	
ACS Expired	0	0.00%	0	0.00%	1	0.21%	0	0.21%	0	0.00%	
Total	0	0.00%	0	0.85%	2	0.41%	0	0.41%	1	2.30%	



A XEROX Company

Los Angeles County Approach Summary Report

Location 163: EB 1st Street @ Eastern Avenue



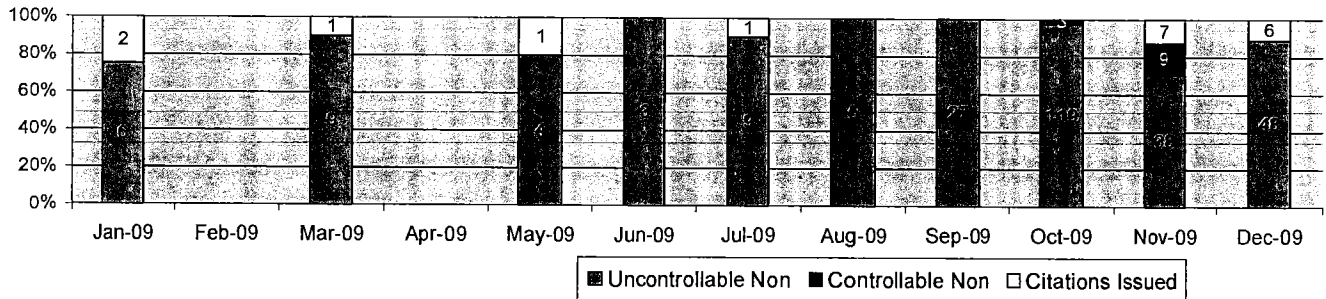
Events	Dec-09		3 Month Average		Year to Date Total		Year to Date Average		2008 Average	
	Quantity	% of Events	Quantity	% of Events	Quantity	% of Events	Quantity	% of Events	Quantity	% of Events
Non Violations	6	100.0%	151	96.6%	1351	97.2%	113	97.3%	129	97.5%
Violations	0	0.0%	5	3.4%	39	2.8%	3	2.7%	3	2.5%
Total Events	6	100.0%	156	100.0%	1390	100.0%	116	100.0%	132	100.0%
Violations	Quantity	% of Viol	Quantity	% of Viol	Quantity	% of Viol	Quantity	% of Viol	Quantity	% of Viol
Uncont. Non-Issued Viol	0	0.0%	5	3.0%	31	79.5%	2	78.4%	2	13.3%
Cont. Non-Issued Viol	0	0.0%	0	0.0%	1	2.6%	0	2.7%	0	0.0%
Citations	0	0.0%	1	12.5%	7	17.9%	1	18.9%	1	33.3%
Vehicle Count-All Lanes	4,833		80,160		829,517		69,126		99,736	
Av. Violation Speed	0.00		15.66		14.20		14.20		31.06	
Av. Issued Speed	0.00		10.17		10.88		10.88		30.33	
Av. Violation Sec.	0.00		25.00		12.23		12.23		2.45	
Av. Issued Sec.	0.00		12.50		7.80		7.80		3.72	
Cal. Days/Enforc. Days	31	1	30	20	365	198	30	17	30	27
Daily Citation Yield	0.00	0.00	0.02	0.03	0.02	0.04	0.02	0.04	0.05	0.05
Cit./Viol. Iss. Rate	0%		13%		18%		19%		41%	
Controllable Iss. Rate	0%		100%		88%		88%		92%	
Non-Violations	Quantity	% of Events	Quantity	% of Events	Quantity	% of Events	Quantity	% of Events	Quantity	% of Events
Rear Axle Violation	0	0.00%	0	0.00%	0	0.00%	0	0.00%	0	0.00%
Right Turn	1	16.67%	57	36.32%	527	37.91%	44	37.97%	47	35.63%
No Violation Occurred	5	83.33%	94	60.26%	824	59.28%	69	59.37%	82	62.19%
Total Non Violations	6	100.00%	151	96.58%	1351	97.19%	113	97.33%	129	97.83%
Non-Issued	Quantity	% of Viol	Quantity	% of Viol	Quantity	% of Viol	Quantity	% of Viol	Quantity	% of Viol
No Plate	0	0.00%	0	0.00%	2	0.14%	0	0.14%	0	0.09%
Out of State Plate	0	0.00%	0	0.00%	0	0.00%	0	0.00%	0	0.00%
Glare on Plate	0	0.00%	0	0.00%	0	0.00%	0	0.00%	0	0.00%
Illegible Plate	0	0.00%	0	0.00%	0	0.00%	0	0.00%	0	0.00%
Plate Obstructed	0	0.00%	0	0.00%	0	0.00%	0	0.00%	0	0.00%
Windshield Glare	0	0.00%	0	0.00%	2	0.14%	0	0.14%	0	0.00%
Driver Obstructed	0	0.00%	0	0.00%	0	0.00%	0	0.00%	0	0.00%
Car Obstructed	0	0.00%	0	0.00%	1	0.07%	0	0.07%	0	0.00%
Emergency Vehicle	0	0.00%	4	2.35%	22	1.58%	2	1.59%	1	0.47%
No Vehicle Match Found	0	0.00%	0	0.00%	0	0.00%	0	0.00%	0	0.00%
No DMV Match Found	0	0.00%	1	0.64%	4	0.29%	0	0.29%	1	0.47%
Police Expired	0	0.00%	0	0.00%	0	0.00%	0	0.00%	0	0.09%
Other	0	0.00%	0	0.00%	0	0.00%	0	0.00%	0	0.00%
Total	0	0.00%	5	2.99%	31	2.23%	3	2.23%	2	1.13%
Framing of Plate	0	0.00%	0	0.00%	0	0.00%	0	0.00%	0	0.00%
Focus / Clarity of Plate	0	0.00%	0	0.00%	0	0.00%	0	0.00%	0	0.00%
Dark Interior	0	0.00%	0	0.00%	1	0.07%	0	0.07%	0	0.00%
Framing of Driver	0	0.00%	0	0.00%	0	0.00%	0	0.00%	0	0.00%
Focus / Clarity of Driver	0	0.00%	0	0.00%	0	0.00%	0	0.00%	0	0.00%
Framing of Car	0	0.00%	0	0.00%	0	0.00%	0	0.00%	0	0.00%
Data Error	0	0.00%	0	0.00%	0	0.00%	0	0.00%	0	0.00%
Exposure	0	0.00%	0	0.00%	0	0.00%	0	0.00%	0	0.00%
Equipment Malfunction	0	0.00%	0	0.00%	0	0.00%	0	0.00%	0	0.00%
Police Return	0	0.00%	0	0.00%	0	0.00%	0	0.00%	0	0.00%
ACS Expired	0	0.00%	0	0.00%	0	0.00%	0	0.00%	0	0.00%
Total	0	0.00%	0	0.00%	1	0.07%	0	0.07%	0	0.00%



A Xerox Company

Los Angeles County Approach Summary Report

Location 164: WB 1st Street @ Eastern Avenue



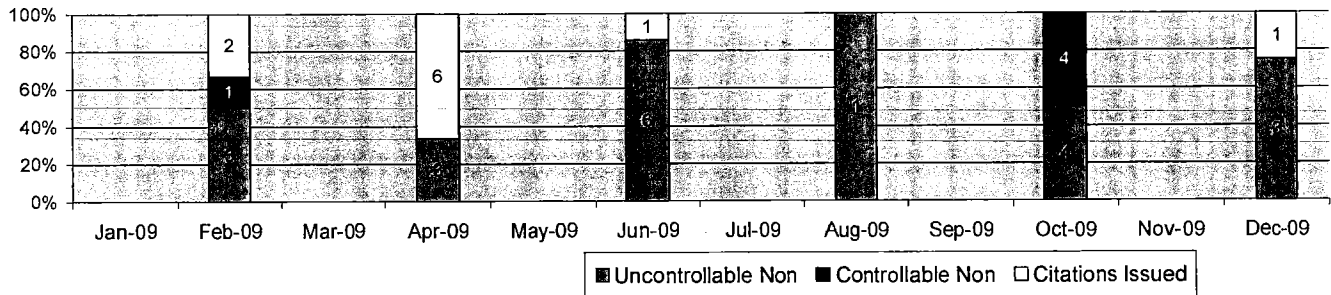
Events	Dec-09		3 Month Average		Year to Date Total		Year to Date Average		2008 Average	
	Quantity	% of Events	Quantity	% of Events	Quantity	% of Events	Quantity	% of Events	Quantity	% of Events
Non Violations	353	86.7%	869	92.8%	5236	94.6%	436	94.6%	370	96.9%
Violations	54	13.3%	68	7.2%	298	5.4%	25	5.4%	8	3.1%
Total Events	407	100.0%	936	100.0%	5534	100.0%	461	100.0%	378	100.0%
Violations	Quantity	% of Viol	Quantity	% of Viol	Quantity	% of Viol	Quantity	% of Viol	Quantity	% of Viol
Uncont. Non-Issued Viol	48	88.9%	61	6.6%	268	89.9%	22	89.9%	7	14.3%
Cont. Non-Issued Viol	0	0.0%	4	0.4%	12	4.0%	1	4.0%	0	2.9%
Citations	6	11.1%	4	5.2%	18	6.0%	2	6.6%	2	14.3%
Vehicle Count-All Lanes	153,759		130,240		1,190,711		99,226		139,050	
Av. Violation Speed	18.74		16.42		18.52		18.52		27.22	
Av. Issued Speed	17.17		16.06		17.45		17.45		22.58	
Av. Violation Sec.	18.29		16.28		16.55		16.55		8.48	
Av. Issued Sec.	9.53		12.60		4.15		4.15		2.32	
Cal. Days/Enforc. Days	31	31	30	30	365	258	30	22	30	27
Daily Citation Yield	0.19	0.19	0.12	0.12	0.05	0.07	0.05	0.08	0.05	0.05
Cit /Viol. Iss. Rate	11%		5%		6%		7%		41%	
Controllable Iss. Rate	100%		47%		60%		62%		92%	
Non-Violations	Quantity	% of Events	Quantity	% of Events	Quantity	% of Events	Quantity	% of Events	Quantity	% of Events
Rear Axle Violation	0	0.00%	0	0.00%	0	0.00%	0	0.00%	0	0.00%
Right Turn	1	0.25%	51	5.48%	1039	18.77%	87	18.77%	126	33.25%
No Violation Occurred	352	86.49%	817	87.29%	4197	75.84%	350	75.84%	244	64.54%
Total Non Violations	353	86.73%	869	92.77%	5236	94.62%	436	94.62%	370	97.78%
Non-Issued	Quantity	% of Viol	Quantity	% of Viol	Quantity	% of Viol	Quantity	% of Viol	Quantity	% of Viol
No Plate	2	3.70%	2	0.18%	9	0.16%	1	0.16%	1	0.17%
Out of State Plate	0	0.00%	0	0.00%	0	0.00%	0	0.00%	0	0.00%
Glare on Plate	0	0.00%	0	0.00%	0	0.00%	0	0.00%	0	0.00%
Illegible Plate	0	0.00%	0	0.04%	1	0.02%	0	0.02%	0	0.00%
Plate Obstructed	1	1.85%	0	0.04%	2	0.04%	0	0.04%	0	0.00%
Windshield Glare	0	0.00%	1	0.07%	3	0.05%	0	0.05%	0	0.03%
Driver Obstructed	1	1.85%	0	0.00%	1	0.02%	0	0.02%	0	0.00%
Car Obstructed	0	0.00%	5	0.50%	15	0.27%	1	0.27%	0	0.00%
Emergency Vehicle	29	53.70%	12	1.28%	95	1.72%	8	1.72%	5	1.39%
No Vehicle Match Found	0	0.00%	0	0.00%	0	0.00%	0	0.00%	0	0.00%
No DMV Match Found	4	7.41%	6	0.61%	23	0.42%	2	0.42%	0	0.03%
Police Expired	11	20.37%	4	0.46%	24	0.43%	2	0.43%	1	0.13%
Other	0	0.00%	32	3.38%	95	1.72%	8	1.72%	0	0.00%
Total	48	88.89%	61	6.55%	268	4.84%	22	4.84%	7	1.75%
Framing of Plate	0	0.00%	0	0.00%	0	0.00%	0	0.00%	0	0.00%
Focus / Clarity of Plate	0	0.00%	0	0.00%	0	0.00%	0	0.00%	0	0.00%
Dark Interior	0	0.00%	0	0.00%	0	0.00%	0	0.00%	0	0.00%
Framing of Driver	0	0.00%	0	0.00%	0	0.00%	0	0.00%	0	0.00%
Focus / Clarity of Driver	0	0.00%	0	0.00%	0	0.00%	0	0.00%	0	0.00%
Framing of Car	0	0.00%	0	0.00%	0	0.00%	0	0.00%	0	0.00%
Data Error	0	0.00%	0	0.00%	0	0.00%	0	0.00%	0	0.03%
Exposure	0	0.00%	0	0.04%	1	0.02%	0	0.02%	0	0.03%
Equipment Malfunction	0	0.00%	1	0.07%	2	0.04%	0	0.04%	0	0.00%
Police Return	0	0.00%	0	0.00%	0	0.00%	0	0.00%	0	0.00%
ACS Expired	0	0.00%	3	0.32%	9	0.16%	1	0.16%	0	0.00%
Total	0	0.00%	4	0.43%	12	0.22%	1	0.22%	0	0.07%



A XEROX Company

Los Angeles County Approach Summary Report

Location 171: NB Carmenita Road @ Leffingwell Road



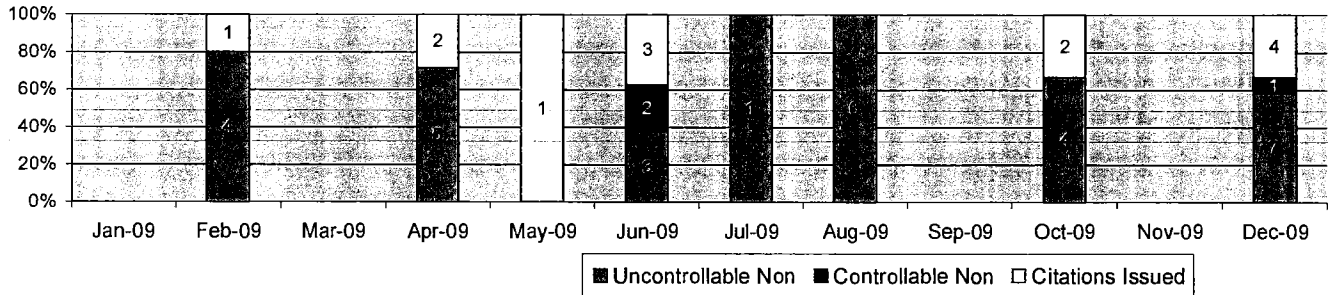
Events	Dec-09		3 Month Average		Year to Date Total		Year to Date Average		2008 Average	
	Quantity	% of Events	Quantity	% of Events	Quantity	% of Events	Quantity	% of Events	Quantity	% of Events
Non Violations	96	96.0%	60	95.7%	1010	96.7%	84	96.7%	131	97.0%
Violations	4	4.0%	3	4.3%	35	3.3%	3	3.3%	6	3.0%
Total Events	100	100.0%	63	100.0%	1045	100.0%	87	100.0%	137	100.0%
Violations	Quantity	% of Viol	Quantity	% of Viol	Quantity	% of Viol	Quantity	% of Viol	Quantity	% of Viol
Uncont. Non-Issued Viol	3	75.0%	1	2.1%	20	57.1%	2	57.1%	4	12.5%
Cont. Non-Issued Viol	0	0.0%	1	2.1%	5	14.3%	0	14.3%	1	4.7%
Citations	1	25.0%	0	0.0%	10	28.6%	1	28.6%	1	13.7%
Vehicle Count-All Lanes	97,213		74,763		1,187,639		107,967		229,718	
Av. Violation Speed	23.75		12.25		13.28		13.28		26.55	
Av. Issued Speed	61.00		0.00		12.49		12.49		19.57	
Av. Violation Sec.	39.48		0.92		6.84		6.84		9.54	
Av. Issued Sec.	0.70		0.00		4.81		4.81		16.03	
Cal. Days/Enforc. Days	31	31	30	11	365	181	30	15	31	22
Daily Citation Yield	0.03	0.03	0.00	0.00	0.03	0.06	0.03	0.06	0.02	0.03
Cit /Viol. Iss. Rate	25%		0%		29%		29%		41%	
Controllable Iss. Rate	100%		0%		67%		67%		92%	
Non-Violations	Quantity	% of Events	Quantity	% of Events	Quantity	% of Events	Quantity	% of Events	Quantity	% of Events
Rear Axle Violation	0	0.00%	0	0.00%	1	0.10%	0	0.10%	0	0.00%
Right Turn	18	18.00%	11	17.02%	233	22.30%	19	22.30%	39	28.57%
No Violation Occurred	78	78.00%	49	78.72%	776	74.26%	65	74.26%	92	67.36%
Total Non Violations	96	96.00%	60	95.74%	1010	96.65%	84	96.65%	131	95.93%
Non-Issued	Quantity	% of Viol	Quantity	% of Viol	Quantity	% of Viol	Quantity	% of Viol	Quantity	% of Viol
No Plate	1	25.00%	0	0.00%	1	0.10%	0	0.10%	0	0.10%
Out of State Plate	0	0.00%	0	0.00%	0	0.00%	0	0.00%	0	0.00%
Glare on Plate	0	0.00%	0	0.00%	0	0.00%	0	0.00%	0	0.00%
Illegible Plate	0	0.00%	0	0.00%	0	0.00%	0	0.00%	0	0.00%
Plate Obstructed	0	0.00%	0	0.00%	0	0.00%	0	0.00%	0	0.00%
Windshield Glare	0	0.00%	0	0.00%	3	0.29%	0	0.29%	0	0.21%
Driver Obstructed	0	0.00%	0	0.00%	0	0.00%	0	0.00%	0	0.00%
Car Obstructed	0	0.00%	0	0.00%	1	0.10%	0	0.10%	0	0.00%
Emergency Vehicle	2	50.00%	0	0.53%	9	0.86%	1	0.86%	3	1.88%
No Vehicle Match Found	0	0.00%	0	0.00%	0	0.00%	0	0.00%	0	0.00%
No DMV Match Found	0	0.00%	1	1.06%	3	0.29%	0	0.29%	1	0.63%
Police Expired	0	0.00%	0	0.53%	3	0.29%	0	0.29%	0	0.21%
Other	0	0.00%	0	0.00%	0	0.00%	0	0.00%	0	0.00%
Total	3	75.00%	1	2.13%	20	1.91%	2	1.91%	4	3.02%
Framing of Plate	0	0.00%	0	0.00%	0	0.00%	0	0.00%	0	0.00%
Focus / Clarity of Plate	0	0.00%	0	0.00%	0	0.00%	0	0.00%	0	0.00%
Dark Interior	0	0.00%	0	0.00%	0	0.00%	0	0.00%	0	0.00%
Framing of Driver	0	0.00%	0	0.00%	0	0.00%	0	0.00%	0	0.00%
Focus / Clarity of Driver	0	0.00%	0	0.00%	0	0.00%	0	0.00%	0	0.00%
Framing of Car	0	0.00%	0	0.00%	0	0.00%	0	0.00%	0	0.00%
Data Error	0	0.00%	0	0.00%	0	0.00%	0	0.00%	0	0.00%
Exposure	0	0.00%	0	0.00%	0	0.00%	0	0.00%	0	0.10%
Equipment Malfunction	0	0.00%	0	0.00%	0	0.00%	0	0.00%	0	0.00%
Police Return	0	0.00%	1	2.13%	5	0.48%	0	0.48%	1	0.52%
ACS Expired	0	0.00%	0	0.00%	0	0.00%	0	0.00%	0	0.00%
Total	0	0.00%	1	2.13%	5	0.48%	0	0.48%	1	0.63%



A XEROX Company

Los Angeles County Approach Summary Report

Location 172: SB Carmenita Road @ Leffingwell Road



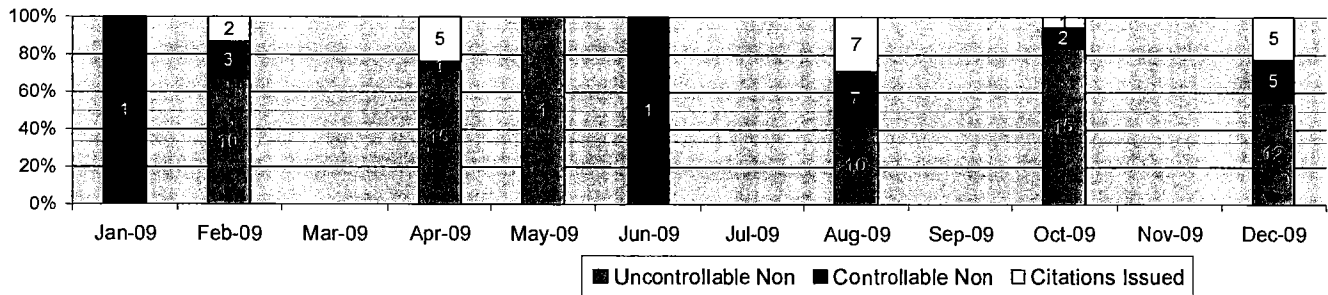
Events	Dec-09		3 Month Average		Year to Date Total		Year to Date Average		2008 Average	
	Quantity	% of Events	Quantity	% of Events	Quantity	% of Events	Quantity	% of Events	Quantity	% of Events
Non Violations	182	93.8%	62	96.9%	1267	96.5%	106	96.5%	151	96.7%
Violations	12	6.2%	2	3.1%	46	3.5%	4	3.5%	7	3.3%
Total Events	194	100.0%	64	100.0%	1313	100.0%	109	100.0%	158	100.0%
Violations	Quantity	% of Viol	Quantity	% of Viol	Quantity	% of Viol	Quantity	% of Viol	Quantity	% of Viol
Uncont. Non-Issued Viol	7	58.3%	1	2.1%	30	65.2%	3	65.2%	3	14.0%
Cont. Non-Issued Viol	1	8.3%	0	0.0%	3	6.5%	0	6.5%	1	3.2%
Citations	4	33.3%	1	33.3%	13	28.3%	1	28.3%	3	14.0%
Vehicle Count-All Lanes	230,755		82,158		1,346,158		122,378		227,158	
Av. Violation Speed	28.00		10.22		22.60		22.60		35.25	
Av. Issued Speed	42.75		14.83		21.67		21.67		39.58	
Av. Violation Sec.	10.96		3.53		3.43		3.43		4.76	
Av. Issued Sec.	9.32		0.27		1.66		1.66		1.31	
Cal. Days/Enforc. Days	31	31	30	11	365	183	30	15	31	22
Daily Citation Yield	0.13	0.13	0.02	0.06	0.04	0.07	0.04	0.07	0.10	0.14
Cit/Viol. Iss. Rate	33%		33%		28%		28%		41%	
Controllable Iss. Rate	80%		100%		81%		81%		92%	
Non-Violations	Quantity	% of Events	Quantity	% of Events	Quantity	% of Events	Quantity	% of Events	Quantity	% of Events
Rear Axle Violation	0	0.00%	0	0.00%	0	0.00%	0	0.00%	0	0.00%
Right Turn	75	38.66%	13	20.83%	511	38.92%	43	38.92%	67	42.46%
No Violation Occurred	107	55.15%	49	76.04%	756	57.58%	63	57.58%	84	53.30%
Total Non Violations	182	93.81%	62	96.88%	1267	96.50%	106	96.50%	151	95.75%
Non-Issued	Quantity	% of Viol	Quantity	% of Viol	Quantity	% of Viol	Quantity	% of Viol	Quantity	% of Viol
No Plate	0	0.00%	0	0.00%	2	0.15%	0	0.15%	0	0.09%
Out of State Plate	0	0.00%	0	0.00%	0	0.00%	0	0.00%	0	0.00%
Glare on Plate	0	0.00%	0	0.00%	1	0.08%	0	0.08%	0	0.00%
Illegible Plate	0	0.00%	0	0.00%	0	0.00%	0	0.00%	0	0.00%
Plate Obstructed	0	0.00%	0	0.00%	0	0.00%	0	0.00%	0	0.00%
Windshield Glare	0	0.00%	0	0.00%	0	0.00%	0	0.00%	0	0.00%
Driver Obstructed	0	0.00%	0	0.00%	0	0.00%	0	0.00%	0	0.00%
Car Obstructed	0	0.00%	0	0.00%	0	0.00%	0	0.00%	0	0.00%
Emergency Vehicle	6	50.00%	1	1.56%	21	1.60%	2	1.60%	2	1.26%
No Vehicle Match Found	0	0.00%	0	0.00%	0	0.00%	0	0.00%	0	0.00%
No DMV Match Found	1	8.33%	0	0.52%	4	0.30%	0	0.30%	1	0.36%
Police Expired	0	0.00%	0	0.00%	2	0.15%	0	0.15%	0	0.18%
Other	0	0.00%	0	0.00%	0	0.00%	0	0.00%	0	0.00%
Total	7	58.33%	1	2.08%	30	2.28%	3	2.28%	3	1.90%
Framing of Plate	0	0.00%	0	0.00%	0	0.00%	0	0.00%	0	0.00%
Focus / Clarity of Plate	0	0.00%	0	0.00%	0	0.00%	0	0.00%	0	0.09%
Dark Interior	0	0.00%	0	0.00%	0	0.00%	0	0.00%	0	0.00%
Framing of Driver	0	0.00%	0	0.00%	0	0.00%	0	0.00%	0	0.00%
Focus / Clarity of Driver	0	0.00%	0	0.00%	0	0.00%	0	0.00%	0	0.00%
Framing of Car	1	8.33%	0	0.00%	1	0.08%	0	0.08%	0	0.00%
Data Error	0	0.00%	0	0.00%	0	0.00%	0	0.00%	0	0.09%
Exposure	0	0.00%	0	0.00%	0	0.00%	0	0.00%	0	0.00%
Equipment Malfunction	0	0.00%	0	0.00%	0	0.00%	0	0.00%	0	0.00%
Police Return	0	0.00%	0	0.00%	2	0.15%	0	0.15%	0	0.27%
ACS Expired	0	0.00%	0	0.00%	0	0.00%	0	0.00%	0	0.00%
Total	1	8.33%	0	0.00%	3	0.23%	0	0.23%	1	0.45%



A xerox Company

Los Angeles County Approach Summary Report

Location 183: EB Telegraph Road @ Colima Road



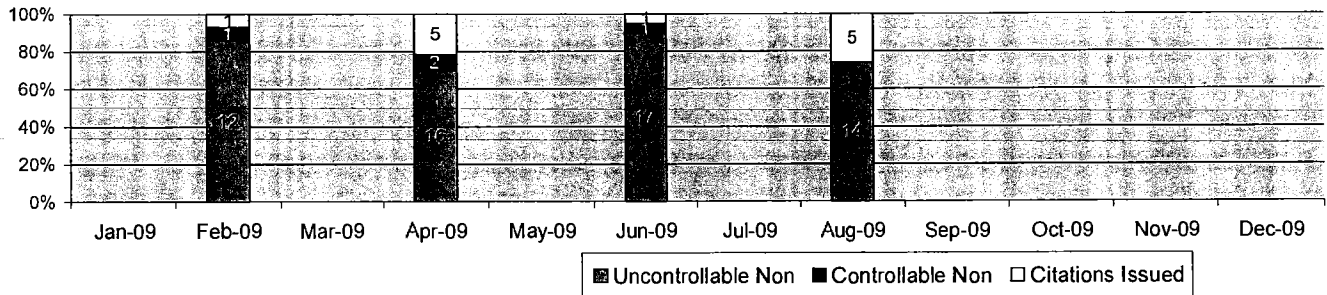
Events	Dec-09		3 Month Average		Year to Date Total		Year to Date Average		2008 Average	
	Quantity	% of Events	Quantity	% of Events	Quantity	% of Events	Quantity	% of Events	Quantity	% of Events
Non Violations	111	83.5%	39	86.8%	587	85.1%	49	85.1%	81	87.4%
Violations	22	16.5%	6	13.2%	103	14.9%	9	14.9%	16	12.6%
Total Events	133	100.0%	45	100.0%	690	100.0%	58	100.0%	97	100.0%
Violations	Quantity	% of Viol.	Quantity	% of Viol.	Quantity	% of Viol.	Quantity	% of Viol.	Quantity	% of Viol.
Uncont. Non-Issued Viol	12	54.5%	5	11.0%	63	61.2%	5	61.2%	9	11.7%
Cont. Non-Issued Viol	5	22.7%	1	1.5%	20	19.4%	2	19.4%	4	6.0%
Citations	5	22.7%	0	5.6%	20	19.4%	2	19.4%	3	11.3%
Vehicle Count-All Lanes	274,331		95,248		1,581,362		143,760		255,123	
Av. Violation Speed	30.32		8.91		18.47		18.47		31.27	
Av. Issued Speed	33.80		13.33		17.19		17.19		37.55	
Av. Violation Sec.	10.19		5.57		8.51		8.51		8.73	
Av. Issued Sec.	8.96		5.23		4.67		4.67		4.89	
Cal. Days/Enforc. Days	31	31	30	11	365	187	30	16	31	22
Daily Citation Yield	0.16	0.16	0.01	0.03	0.05	0.11	0.05	0.11	0.08	0.12
Cit/Viol. Iss. Rate	23%		6%		19%		19%		41%	
Controllable Iss. Rate	50%		33%		50%		50%		92%	
Non-Violations	Quantity	% of Events	Quantity	% of Events	Quantity	% of Events	Quantity	% of Events	Quantity	% of Events
Rear Axle Violation	0	0.00%	0	0.00%	0	0.00%	0	0.00%	0	0.00%
Right Turn	37	27.82%	10	22.06%	196	28.41%	16	28.41%	27	28.40%
No Violation Occurred	74	55.64%	29	64.71%	391	56.67%	33	56.67%	53	55.18%
Total Non Violations	111	83.46%	39	86.76%	587	85.07%	49	85.07%	81	83.58%
Non-Issued	Quantity	% of Viol.	Quantity	% of Viol.	Quantity	% of Viol.	Quantity	% of Viol.	Quantity	% of Viol.
No Plate	0	0.00%	0	0.74%	3	0.43%	0	0.43%	0	0.44%
Out of State Plate	0	0.00%	0	0.00%	0	0.00%	0	0.00%	0	0.15%
Glare on Plate	0	0.00%	0	0.00%	0	0.00%	0	0.00%	0	0.00%
Illegible Plate	0	0.00%	0	0.00%	0	0.00%	0	0.00%	0	0.00%
Plate Obstructed	0	0.00%	0	0.00%	0	0.00%	0	0.00%	0	0.00%
Windshield Glare	0	0.00%	0	0.00%	1	0.14%	0	0.14%	0	0.15%
Driver Obstructed	0	0.00%	0	0.00%	0	0.00%	0	0.00%	0	0.15%
Car Obstructed	0	0.00%	0	0.00%	1	0.14%	0	0.14%	0	0.00%
Emergency Vehicle	7	31.82%	4	9.56%	50	7.25%	4	7.25%	8	7.84%
No Vehicle Match Found	0	0.00%	0	0.00%	0	0.00%	0	0.00%	0	0.00%
No DMV Match Found	2	9.09%	0	0.00%	3	0.43%	0	0.43%	0	0.44%
Police Expired	3	13.64%	0	0.74%	5	0.72%	0	0.72%	0	0.44%
Other	0	0.00%	0	0.00%	0	0.00%	0	0.00%	0	0.15%
Total	12	54.55%	5	11.03%	63	9.13%	5	9.13%	9	9.76%
Framing of Plate	0	0.00%	0	0.00%	0	0.00%	0	0.00%	0	0.00%
Focus / Clarity of Plate	0	0.00%	0	0.00%	0	0.00%	0	0.00%	0	0.15%
Dark Interior	2	9.09%	0	0.00%	2	0.29%	0	0.29%	1	0.89%
Framing of Driver	0	0.00%	0	0.00%	0	0.00%	0	0.00%	0	0.00%
Focus / Clarity of Driver	0	0.00%	0	0.00%	0	0.00%	0	0.00%	1	0.74%
Framing of Car	0	0.00%	0	0.00%	0	0.00%	0	0.00%	0	0.15%
Data Error	0	0.00%	0	0.00%	0	0.00%	0	0.00%	0	0.00%
Exposure	0	0.00%	0	0.00%	0	0.00%	0	0.00%	0	0.30%
Equipment Malfunction	0	0.00%	0	0.00%	6	0.87%	1	0.87%	0	0.15%
Police Return	3	13.64%	1	1.47%	12	1.74%	1	1.74%	1	1.48%
ACS Expired	0	0.00%	0	0.00%	0	0.00%	0	0.00%	0	0.15%
Total	5	22.73%	1	1.47%	20	2.90%	2	2.90%	4	3.99%



A XEROX Company

Los Angeles County Approach Summary Report

Location 184: WB Telegraph Road @ Colima Road



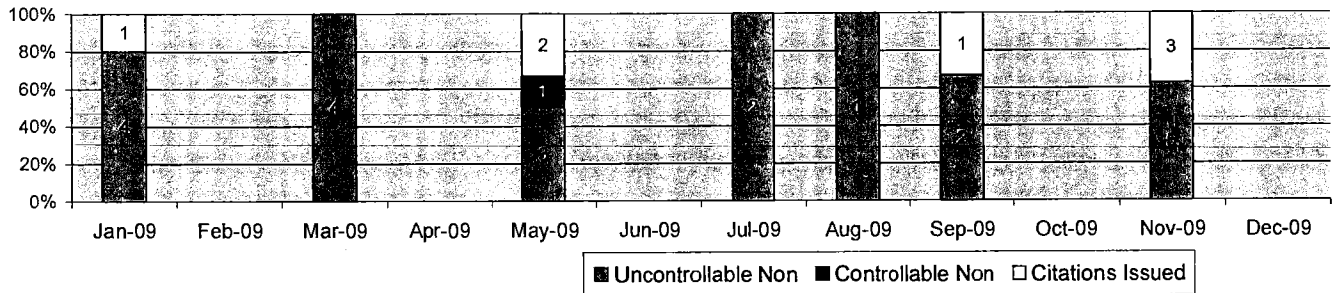
Events	Dec-09		3 Month Average		Year to Date Total		Year to Date Average		2008 Average	
	Quantity	% of Events	Quantity	% of Events	Quantity	% of Events	Quantity	% of Events	Quantity	% of Events
Non Violations	0	0.0%	162	88.8%	683	90.1%	137	90.1%	112	93.0%
Violations	0	0.0%	20	11.2%	75	9.9%	15	9.9%	13	7.0%
Total Events	0	0.0%	182	100.0%	758	100.0%	152	100.0%	125	100.0%
Violations	Quantity	% of Viol	Quantity	% of Viol	Quantity	% of Viol	Quantity	% of Viol	Quantity	% of Viol
Uncont. Non-Issued Viol	0	0.0%	16	8.6%	59	78.7%	12	78.7%	12	12.6%
Cont. Non-Issued Viol	0	0.0%	1	0.5%	4	5.3%	1	5.3%	1	2.9%
Citations	0	0.0%	4	18.0%	12	16.0%	2	16.0%	2	22.3%
Vehicle Count-All Lanes	0		279,049		1,122,337		224,467		282,840	
Av. Violation Speed	0.00		29.21		18.51		22.21		24.90	
Av. Issued Speed	0.00		40.47		27.07		32.48		21.51	
Av. Violation Sec.	0.00		12.00		8.67		10.40		16.43	
Av. Issued Sec.	0.00		12.08		9.86		11.83		4.79	
Cal. Days/Enforc. Days	31	0	30	29	365	120	30	23	31	21
Daily Citation Yield	0.00	0.00	0.12	0.13	0.03	0.10	0.08	0.10	0.08	0.11
Cit/Viol. Iss. Rate	0%		18%		16%		16%		41%	
Controllable Iss. Rate	0%		79%		75%		75%		92%	
Non-Violations	Quantity	% of Events	Quantity	% of Events	Quantity	% of Events	Quantity	% of Events	Quantity	% of Events
Rear Axle Violation	0	0.00%	0	0.00%	0	0.00%	0	0.00%	0	0.00%
Right Turn	0	0.00%	47	26.01%	198	26.12%	40	26.12%	32	25.63%
No Violation Occurred	0	0.00%	114	62.82%	485	63.98%	97	63.98%	80	63.90%
Total Non Violations	0	0.00%	162	88.83%	683	90.11%	137	90.11%	112	89.52%
Non-Issued	Quantity	% of Viol	Quantity	% of Viol	Quantity	% of Viol	Quantity	% of Viol	Quantity	% of Viol
No Plate	0	0.00%	0	0.00%	0	0.00%	0	0.00%	1	0.40%
Out of State Plate	0	0.00%	0	0.00%	0	0.00%	0	0.00%	0	0.00%
Glare on Plate	0	0.00%	0	0.00%	0	0.00%	0	0.00%	0	0.00%
Illegible Plate	0	0.00%	0	0.00%	0	0.00%	0	0.00%	0	0.00%
Plate Obstructed	0	0.00%	0	0.18%	1	0.13%	0	0.13%	0	0.00%
Windshield Glare	0	0.00%	2	1.10%	6	0.79%	1	0.79%	1	0.80%
Driver Obstructed	0	0.00%	0	0.18%	1	0.13%	0	0.13%	0	0.00%
Car Obstructed	0	0.00%	0	0.18%	1	0.13%	0	0.13%	0	0.00%
Emergency Vehicle	0	0.00%	11	5.86%	43	5.67%	9	5.67%	9	7.31%
No Vehicle Match Found	0	0.00%	0	0.00%	0	0.00%	0	0.00%	0	0.00%
No DMV Match Found	0	0.00%	1	0.37%	2	0.26%	0	0.26%	0	0.27%
Police Expired	0	0.00%	1	0.73%	5	0.66%	1	0.66%	1	0.40%
Other	0	0.00%	0	0.00%	0	0.00%	0	0.00%	0	0.00%
Total	0	0.00%	16	8.61%	59	7.78%	12	7.78%	12	9.17%
Framing of Plate	0	0.00%	0	0.00%	0	0.00%	0	0.00%	0	0.00%
Focus / Clarity of Plate	0	0.00%	0	0.18%	1	0.13%	0	0.13%	0	0.13%
Dark Interior	0	0.00%	0	0.00%	0	0.00%	0	0.00%	0	0.13%
Framing of Driver	0	0.00%	0	0.00%	0	0.00%	0	0.00%	0	0.00%
Focus / Clarity of Driver	0	0.00%	0	0.00%	0	0.00%	0	0.00%	0	0.00%
Framing of Car	0	0.00%	0	0.00%	0	0.00%	0	0.00%	0	0.00%
Data Error	0	0.00%	0	0.00%	0	0.00%	0	0.00%	0	0.00%
Exposure	0	0.00%	0	0.00%	0	0.00%	0	0.00%	0	0.00%
Equipment Malfunction	0	0.00%	0	0.00%	0	0.00%	0	0.00%	0	0.13%
Police Return	0	0.00%	1	0.37%	3	0.40%	1	0.40%	1	0.40%
ACS Expired	0	0.00%	0	0.00%	0	0.00%	0	0.00%	0	0.00%
Total	0	0.00%	1	0.55%	4	0.53%	1	0.53%	1	0.80%



A KEROX Company

Los Angeles County Approach Summary Report

Location 201: NB Hollenbeck Avenue @ Cypress Street



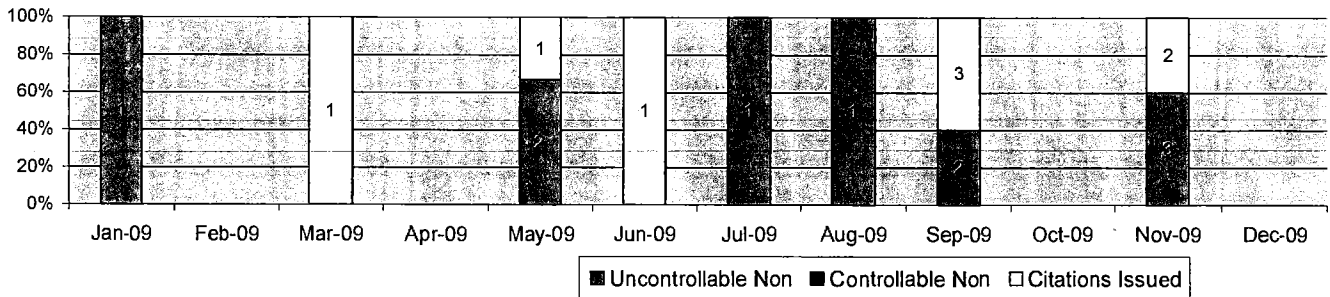
Events	Dec-09		3 Month Average		Year to Date Total		Year to Date Average		2008 Average	
	Quantity	% of Events	Quantity	% of Events	Quantity	% of Events	Quantity	% of Events	Quantity	% of Events
Non Violations	2	100.0%	41	91.9%	417	93.5%	35	93.5%	82	94.7%
Violations	0	0.0%	4	8.1%	29	6.5%	2	6.5%	5	5.3%
Total Events	2	100.0%	45	100.0%	446	100.0%	37	100.0%	86	100.0%
Violations	Quantity	% of Viol	Quantity	% of Viol	Quantity	% of Viol	Quantity	% of Viol	Quantity	% of Viol
Uncont. Non-Issued Viol	0	0.0%	2	5.2%	21	72.4%	2	72.4%	3	14.6%
Cont. Non-Issued Viol	0	0.0%	0	0.0%	1	3.4%	0	3.4%	0	2.1%
Citations	0	0.0%	1	36.4%	7	24.1%	1	24.1%	1	16.7%
Vehicle Count-All Lanes	6,928		119,677		1,225,128		102,094		332,925	
Av. Violation Speed	0.00		16.04		9.97		9.97		23.59	
Av. Issued Speed	0.00		25.00		13.25		13.25		33.94	
Av. Violation Sec.	0.00		8.35		8.05		8.05		9.85	
Av. Issued Sec.	0.00		12.61		3.43		3.43		8.01	
Cal. Days/Enforc. Days	31	1	30	21	365	193	30	16	30	27
Daily Citation Yield	0.00	0.00	0.04	0.06	0.02	0.04	0.02	0.04	0.05	0.05
Cit /Viol. Iss. Rate	0%		36%		24%		24%		41%	
Controllable Iss. Rate	0%		100%		88%		88%		92%	
Non-Violations	Dec-09		3 Month Average		Year to Date Total		Year to Date Average		2008 Average	
	Quantity	% of Events	Quantity	% of Events	Quantity	% of Events	Quantity	% of Events	Quantity	% of Events
Rear Axle Violation	0	0.00%	0	0.00%	0	0.00%	0	0.00%	0	0.00%
Right Turn	1	50.00%	11	25.19%	115	25.78%	10	25.78%	18	20.72%
No Violation Occurred	1	50.00%	30	66.67%	302	67.71%	25	67.71%	64	73.91%
Total Non Violations	2	100.00%	41	91.85%	417	93.50%	35	93.50%	82	94.64%
Non-Issued	Quantity	% of Viol	Quantity	% of Viol	Quantity	% of Viol	Quantity	% of Viol	Quantity	% of Viol
No Plate	0	0.00%	0	0.74%	1	0.22%	0	0.22%	0	0.29%
Out of State Plate	0	0.00%	0	0.00%	0	0.00%	0	0.00%	0	0.00%
Glare on Plate	0	0.00%	0	0.00%	0	0.00%	0	0.00%	0	0.00%
Illegible Plate	0	0.00%	0	0.00%	0	0.00%	0	0.00%	0	0.00%
Plate Obstructed	0	0.00%	0	0.00%	0	0.00%	0	0.00%	0	0.00%
Windshield Glare	0	0.00%	0	0.00%	0	0.00%	0	0.00%	0	0.14%
Driver Obstructed	0	0.00%	0	0.00%	0	0.00%	0	0.00%	0	0.00%
Car Obstructed	0	0.00%	0	0.00%	0	0.00%	0	0.00%	0	0.00%
Emergency Vehicle	0	0.00%	1	2.96%	16	3.59%	1	3.59%	3	3.19%
No Vehicle Match Found	0	0.00%	0	0.00%	0	0.00%	0	0.00%	0	0.00%
No DMV Match Found	0	0.00%	0	0.74%	1	0.22%	0	0.22%	0	0.14%
Police Expired	0	0.00%	0	0.74%	3	0.67%	0	0.67%	0	0.00%
Other	0	0.00%	0	0.00%	0	0.00%	0	0.00%	0	0.00%
Total	0	0.00%	2	5.19%	21	4.71%	2	4.71%	3	3.77%
Framing of Plate	0	0.00%	0	0.00%	0	0.00%	0	0.00%	0	0.00%
Focus / Clarity of Plate	0	0.00%	0	0.00%	0	0.00%	0	0.00%	0	0.00%
Dark Interior	0	0.00%	0	0.00%	0	0.00%	0	0.00%	0	0.00%
Framing of Driver	0	0.00%	0	0.00%	0	0.00%	0	0.00%	0	0.00%
Focus / Clarity of Driver	0	0.00%	0	0.00%	0	0.00%	0	0.00%	0	0.00%
Framing of Car	0	0.00%	0	0.00%	0	0.00%	0	0.00%	0	0.00%
Data Error	0	0.00%	0	0.00%	0	0.00%	0	0.00%	0	0.00%
Exposure	0	0.00%	0	0.00%	0	0.00%	0	0.00%	0	0.00%
Equipment Malfunction	0	0.00%	0	0.00%	0	0.00%	0	0.00%	0	0.00%
Police Return	0	0.00%	0	0.00%	1	0.22%	0	0.22%	0	0.00%
ACS Expired	0	0.00%	0	0.00%	0	0.00%	0	0.00%	0	0.00%
Total	0	0.00%	0	0.00%	1	0.22%	0	0.22%	0	0.00%



A XEROX Company

Los Angeles County Approach Summary Report

Location 202: SB Hollenbeck Avenue @ Cypress Street



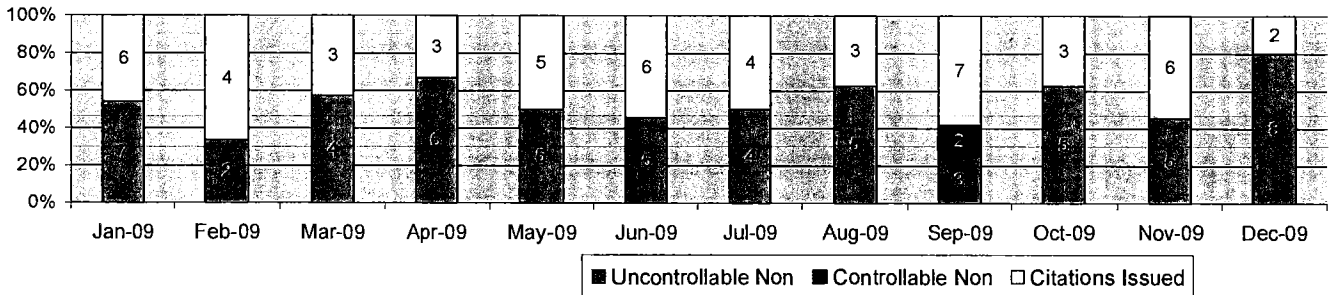
Events	Dec-09		3 Month Average		Year to Date Total		Year to Date Average		2008 Average	
	Quantity	% of Events	Quantity	% of Events	Quantity	% of Events	Quantity	% of Events	Quantity	% of Events
Non Violations	3	100.0%	30	90.0%	253	93.4%	21	93.4%	55	90.8%
Violations	0	0.0%	3	10.0%	18	6.6%	2	6.6%	5	9.2%
Total Events	3	100.0%	33	100.0%	271	100.0%	23	100.0%	60	100.0%
Violations	Quantity	% of Viol	Quantity	% of Viol	Quantity	% of Viol	Quantity	% of Viol	Quantity	% of Viol
Uncont. Non-Issued Viol	0	0.0%	2	5.0%	10	55.6%	1	55.6%	3	8.9%
Cont. Non-Issued Viol	0	0.0%	0	0.0%	0	0.0%	0	0.0%	0	4.3%
Citations	0	0.0%	2	50.0%	8	44.4%	1	44.4%	2	34.4%
Vehicle Count-All Lanes	6,867		118,658		1,129,401		94,117		175,777	
Av. Violation Speed	0.00		31.73		25.68		25.68		31.57	
Av. Issued Speed	0.00		36.44		21.53		21.53		30.56	
Av. Violation Sec.	0.00		8.33		6.85		6.85		12.51	
Av. Issued Sec.	0.00		6.94		4.24		4.24		5.44	
Cal. Days/Enforc. Days	31	1	30	20	365	192	30	16	30	27
Daily Citation Yield	0.00	0.00	0.05	0.08	0.02	0.04	0.02	0.04	0.07	0.08
Cit/Viol. Iss. Rate	0%		50%		44%		44%		41%	
Controllable Iss. Rate	0%		100%		100%		100%		92%	
Non-Violations	Quantity	% of Events	Quantity	% of Events	Quantity	% of Events	Quantity	% of Events	Quantity	% of Events
Rear Axle Violation	0	0.00%	0	0.00%	0	0.00%	0	0.00%	0	0.00%
Right Turn	2	66.67%	13	39.00%	107	39.48%	9	39.48%	24	39.38%
No Violation Occurred	1	33.33%	17	51.00%	146	53.87%	12	53.87%	31	51.67%
Total Non Violations	3	100.00%	30	90.00%	253	93.36%	21	93.36%	55	91.04%
Non-Issued	Quantity	% of Viol	Quantity	% of Viol	Quantity	% of Viol	Quantity	% of Viol	Quantity	% of Viol
No Plate	0	0.00%	1	2.00%	2	0.74%	0	0.74%	0	0.63%
Dut of State Plate	0	0.00%	0	0.00%	0	0.00%	0	0.00%	0	0.00%
Glare on Plate	0	0.00%	0	0.00%	0	0.00%	0	0.00%	0	0.00%
Illegible Plate	0	0.00%	0	0.00%	0	0.00%	0	0.00%	0	0.00%
Plate Dbstructed	0	0.00%	0	0.00%	0	0.00%	0	0.00%	0	0.00%
Windshield Glare	0	0.00%	0	0.00%	0	0.00%	0	0.00%	0	0.21%
Driver Dbstructed	0	0.00%	0	0.00%	1	0.37%	0	0.37%	0	0.00%
Car Obstructed	0	0.00%	0	0.00%	0	0.00%	0	0.00%	0	0.00%
Emergency Vehicle	0	0.00%	0	1.00%	3	1.11%	0	1.11%	2	3.54%
No Vehicle Match Found	0	0.00%	0	1.00%	1	0.37%	0	0.37%	0	0.00%
No DMV Match Found	0	0.00%	0	1.00%	2	0.74%	0	0.74%	0	0.42%
Police Expired	0	0.00%	0	0.00%	1	0.37%	0	0.37%	0	0.21%
Dther	0	0.00%	0	0.00%	0	0.00%	0	0.00%	0	0.00%
Total	0	0.00%	2	5.00%	10	3.69%	1	3.69%	3	5.00%
Framing of Plate	0	0.00%	0	0.00%	0	0.00%	0	0.00%	0	0.00%
Focus / Clarity of Plate	0	0.00%	0	0.00%	0	0.00%	0	0.00%	0	0.00%
Dark Interior	0	0.00%	0	0.00%	0	0.00%	0	0.00%	0	0.00%
Framing of Driver	0	0.00%	0	0.00%	0	0.00%	0	0.00%	0	0.00%
Focus / Clarity of Driver	0	0.00%	0	0.00%	0	0.00%	0	0.00%	0	0.00%
Framing of Car	0	0.00%	0	0.00%	0	0.00%	0	0.00%	0	0.00%
Data Error	0	0.00%	0	0.00%	0	0.00%	0	0.00%	0	0.00%
Exposure	0	0.00%	0	0.00%	0	0.00%	0	0.00%	0	0.21%
Equipment Malfunction	0	0.00%	0	0.00%	0	0.00%	0	0.00%	0	0.00%
Police Return	0	0.00%	0	0.00%	0	0.00%	0	0.00%	0	0.00%
ACS Expired	0	0.00%	0	0.00%	0	0.00%	0	0.00%	0	0.00%
Total	0	0.00%	0	0.00%	0	0.00%	0	0.00%	0	0.21%



A XEROX Company

Los Angeles County Approach Summary Report

Location 212: SB La Cienega Boulevard @ 120th Street



Events	Dec-09		3 Month Average		Year to Date Total		Year to Date Average		2008 Average	
	Quantity	% of Events	Quantity	% of Events	Quantity	% of Events	Quantity	% of Events	Quantity	% of Events
Non Violations	257	96.3%	243	95.9%	3068	96.4%	256	96.4%	281	46.9%
Violations	10	3.7%	10	4.1%	113	3.6%	9	3.6%	13	53.1%
Total Events	267	100.0%	254	100.0%	3181	100.0%	265	100.0%	294	100.0%
Violations	Quantity	% of Viol	Quantity	% of Viol	Quantity	% of Viol	Quantity	% of Viol	Quantity	% of Viol
Uncont. Non-Issued Viol	8	80.0%	4	1.7%	59	52.2%	5	52.2%	6	0.2%
Cont. Non-Issued Viol	0	0.0%	1	0.3%	2	1.8%	0	1.8%	1	19.5%
Citations	2	20.0%	5	51.6%	52	46.0%	4	46.0%	7	1.6%
Vehicle Count-All Lanes	107,557		100,099		1,257,035		104,753		103,599	
Av. Violation Speed	32.30		36.62		35.84		35.84		36.25	
Av. Issued Speed	35.00		39.76		38.09		38.09		37.77	
Av. Violation Sec.	44.61		38.58		28.61		28.61		23.35	
Av. Issued Sec.	28.25		50.14		31.54		31.54		24.99	
Cal. Days/Enforc. Days	31	31	30	30	365	365	30	30	31	31
Daily Citation Yield	0.06	0.06	0.18	0.18	0.14	0.14	0.14	0.14	0.22	0.22
Cit /Viol. Iss. Rate	20%		52%		46%		46%		50%	
Controllable Iss. Rate	100%		89%		96%		96%		88%	
Non-Violations	Quantity	% of Events	Quantity	% of Events	Quantity	% of Events	Quantity	% of Events	Quantity	% of Events
Rear Axle Violation	0	0.00%	0	0.00%	0	0.00%	0	0.00%	0	0.00%
Right Turn	80	29.96%	69	27.07%	950	29.86%	79	29.86%	88	29.94%
No Violation Occurred	177	66.29%	175	68.86%	2118	66.58%	177	66.58%	193	65.55%
Total Non Violations	257	96.25%	243	95.93%	3068	96.45%	256	96.45%	281	95.49%
Non-Issued	Quantity	% of Viol	Quantity	% of Viol	Quantity	% of Viol	Quantity	% of Viol	Quantity	% of Viol
No Plate	1	10.00%	1	0.26%	7	0.22%	1	0.22%	1	0.31%
Out of State Plate	0	0.00%	0	0.00%	3	0.09%	0	0.09%	0	0.09%
Glare on Plate	0	0.00%	0	0.00%	0	0.00%	0	0.00%	0	0.00%
Illegible Plate	0	0.00%	0	0.00%	1	0.03%	0	0.03%	0	0.00%
Plate Obstructed	0	0.00%	0	0.00%	0	0.00%	0	0.00%	0	0.00%
Windshield Glare	0	0.00%	0	0.00%	2	0.06%	0	0.06%	0	0.09%
Driver Obstructed	1	10.00%	0	0.13%	5	0.16%	0	0.16%	1	0.20%
Car Obstructed	0	0.00%	0	0.00%	0	0.00%	0	0.00%	0	0.00%
Emergency Vehicle	1	10.00%	1	0.53%	15	0.47%	1	0.47%	2	0.82%
No Vehicle Match Found	0	0.00%	0	0.00%	1	0.03%	0	0.03%	0	0.00%
No DMV Match Found	2	20.00%	1	0.26%	13	0.41%	1	0.41%	1	0.23%
Police Expired	3	30.00%	1	0.53%	12	0.38%	1	0.38%	1	0.23%
Other	0	0.00%	0	0.00%	0	0.00%	0	0.00%	0	0.00%
Total	8	80.00%	4	1.71%	59	1.85%	5	1.85%	6	1.96%
Framing of Plate	0	0.00%	0	0.00%	0	0.00%	0	0.00%	0	0.00%
Focus / Clarity of Plate	0	0.00%	0	0.13%	1	0.03%	0	0.03%	0	0.06%
Dark Interior	0	0.00%	0	0.00%	0	0.00%	0	0.00%	0	0.00%
Framing of Driver	0	0.00%	0	0.00%	0	0.00%	0	0.00%	0	0.00%
Focus / Clarity of Driver	0	0.00%	0	0.00%	0	0.00%	0	0.00%	0	0.00%
Framing of Car	0	0.00%	0	0.00%	0	0.00%	0	0.00%	0	0.00%
Data Error	0	0.00%	0	0.00%	0	0.00%	0	0.00%	0	0.00%
Exposure	0	0.00%	0	0.00%	0	0.00%	0	0.00%	0	0.14%
Equipment Malfunction	0	0.00%	0	0.00%	0	0.00%	0	0.00%	0	0.11%
Police Return	0	0.00%	0	0.13%	1	0.03%	0	0.03%	0	0.00%
ACS Expired	0	0.00%	0	0.00%	0	0.00%	0	0.00%	0	0.00%
Total	0	0.00%	1	0.26%	2	0.06%	0	0.06%	1	0.31%