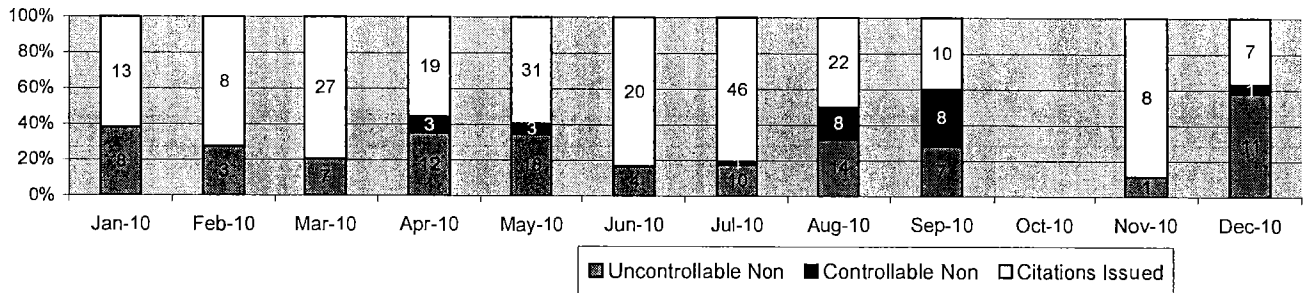




A Xerox Company

Los Angeles County Approach Summary Report

Location 113: EB Batson @ Colima



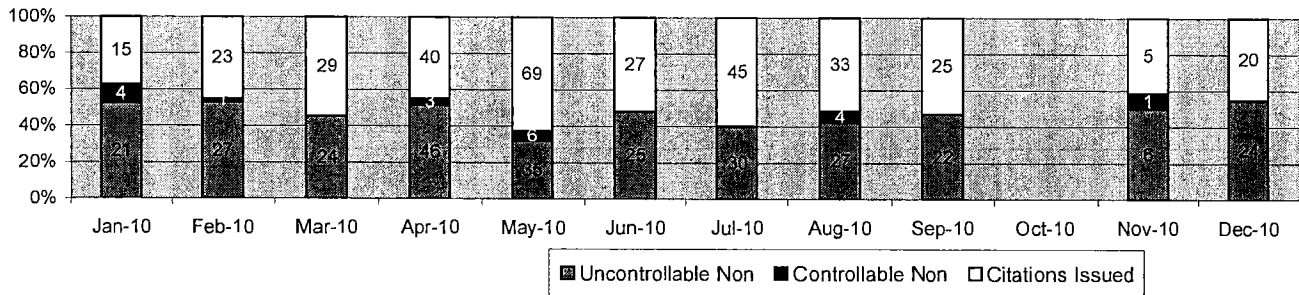
Events	Dec-10		3 Month Average		Year to Date Total		Year to Date Average		2009 Average	
	Quantity	% of Events	Quantity	% of Events	Quantity	% of Events	Quantity	% of Events	Quantity	% of Events
Non Violations	15	44%	26	53%	403	56%	43	61%	52	54%
Violations	19	56%	23	47%	318	44%	28	39%	44	46%
Total Events	34	100%	49	100%	721	100%	71	100%	96	100%
<i>Violations</i>	<i>Quantity</i>	<i>% of Viol</i>	<i>Quantity</i>	<i>% of Viol</i>	<i>Quantity</i>	<i>% of Viol</i>	<i>Quantity</i>	<i>% of Viol</i>	<i>Quantity</i>	<i>% of Viol</i>
Uncont. Non-Issued Viol	11	58%	7	100%	84	26%	8	29%	14	32%
Cont. Non-Issued Viol	1	5%	5	100%	23	7%	2	7%	8	18%
Citations	7	37%	11	46%	211	66%	18	64%	22	50%
Daily Av. Vehicle Counts	14,421		7,826		13,509		13,509		18,679	
Av. Violation Speed	32.4		19.8		27.7		27.7		30.8	
Av. Issued Speed	33.3		19.6		28.2		28.2		31.4	
Av. Violation Sec.	9.4		4.2		7.2		7.2		8.2	
Av. Issued Sec.	5.8		1.5		4.4		4.4		2.1	
Cal. Days/Enforc. Days	31	31	31	20	334	286	30	26	31	31
Daily Citation Yield	0.23		0.35		0.63		0.58		0.71	
Cit/Viol. Iss. Rate	37%		46%		66%		64%		50%	
Controllable Iss. Rate	88%		67%		90%		90%		73%	
<i>Non-Violations</i>	<i>Quantity</i>	<i>% Non-Viol</i>	<i>Quantity</i>	<i>% Non-Viol</i>	<i>Quantity</i>	<i>% Non-Viol</i>	<i>Quantity</i>	<i>% Non-Viol</i>	<i>Quantity</i>	<i>% Non-Viol</i>
Rear Axle Violation	0	0%	6	24%	18	4%	2	4%	1	2%
Right Turn	9	60%	13	51%	219	54%	25	58%	40	77%
No Violation Occurred	6	40%	7	25%	166	41%	16	38%	11	21%
Total Non Violations	15	100%	26	100%	403	100%	43	100%	52	100%
<i>Uncontrollable Non-Iss</i>	<i>Quantity</i>	<i>% of Un.Non</i>	<i>Quantity</i>	<i>% of Un.Non</i>	<i>Quantity</i>	<i>% of Un.Non</i>	<i>Quantity</i>	<i>% of Un.Non</i>	<i>Quantity</i>	<i>% of Un.Non</i>
No Plate	2	18%	1	19%	10	12%	1	13%	2	14%
Out of State Plate	0	0%	0	0%	1	1%	0	1%	0	0%
Glare on Plate	0	0%	0	0%	0	0%	0	0%	0	0%
Illegible Plate	0	0%	0	0%	2	2%	0	2%	0	0%
Plate Obstructed	0	0%	0	0%	5	6%	0	5%	0	0%
Windshield Glare	1	9%	2	24%	16	19%	1	18%	4	29%
Driver Obstructed	0	0%	0	0%	1	1%	0	1%	0	0%
Car Obstructed	1	9%	0	0%	4	5%	0	5%	0	0%
Emergency Vehicle	7	64%	2	24%	30	36%	3	39%	4	29%
No Vehicle Match Found	0	0%	0	0%	0	0%	0	0%	0	0%
No DMV Match Found	0	0%	2	33%	15	18%	1	16%	4	29%
Police Expired	0	0%	0	0%	0	0%	0	0%	0	0%
Other	0	0%	0	0%	0	0%	0	0%	0	0%
Total	11	100%	7	100%	84	100%	8	100%	14	100%
<i>Controllable Non-Iss</i>	<i>Quantity</i>	<i>% Cont. Non</i>	<i>Quantity</i>	<i>% Cont. Non</i>	<i>Quantity</i>	<i>% Cont. Non</i>	<i>Quantity</i>	<i>% Cont. Non</i>	<i>Quantity</i>	<i>% Cont. Non</i>
Framing of Plate	0	0%	0	0%	0	0%	0	0%	0	0%
Focus / Clarity of Plate	0	0%	0	0%	6	26%	1	25%	0	0%
Dark Interior	1	100%	0	0%	0	0%	0	4%	0	0%
Framing of Driver	0	0%	0	0%	0	0%	0	0%	0	0%
Focus / Clarity of Driver	0	0%	0	0%	0	0%	0	0%	0	0%
Framing of Car	0	0%	0	0%	0	0%	0	0%	0	0%
Data Error	0	0%	0	0%	0	0%	0	0%	0	0%
Exposure	0	0%	0	0%	1	4%	0	4%	0	0%
Equipment Malfunction	0	0%	5	100%	16	70%	1	67%	8	100%
Police Return	0	0%	0	0%	0	0%	0	0%	0	0%
ACS Expired	0	0%	0	0%	0	0%	0	0%	0	0%
Total	1	100%	5	100%	23	100%	2	100%	8	100%



A xerox Company

Los Angeles County Approach Summary Report

Location 114: WB Batson @ Colima



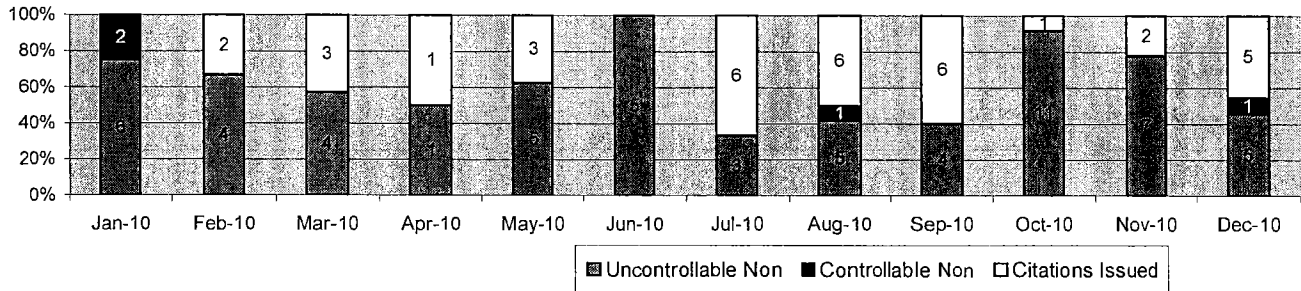
Events	Dec-10		3 Month Average		Year to Date Total		Year to Date Average		2009 Average	
	Quantity	% of Events	Quantity	% of Events	Quantity	% of Events	Quantity	% of Events	Quantity	% of Events
Non Violations	22	33%	19	34%	338	36%	37	41%	45	41%
Violations	44	67%	37	66%	613	64%	53	59%	64	59%
Total Events	66	100%	56	100%	951	100%	90	100%	109	100%
Violations	Quantity	% of Viol	Quantity	% of Viol	Quantity	% of Viol	Quantity	% of Viol	Quantity	% of Viol
Uncont. Non-Issued Viol	24	55%	16	100%	263	43%	24	45%	27	42%
Cont. Non-Issued Viol	0	0%	1	100%	19	3%	2	3%	4	6%
Citations	20	45%	19	52%	331	54%	28	52%	33	52%
Daily Av. Vehicle Counts	13,331		7,002		12,469		12,469		15,087	
Av. Violation Speed	31.6		17.4		27.5		27.5		27.1	
Av. Issued Speed	35.9		19.1		29.6		29.6		28.8	
Av. Violation Sec.	10.2		6.1		7.8		7.8		7.7	
Av. Issued Sec.	2.2		4.3		3.9		3.9		4.4	
Cal. Days/Enforc. Days	31	31	31	20	334	286	30	26	31	31
Daily Citation Yield	0.65	0.65	0.63	0.95	0.99	1.16	0.91	1.04	1.06	1.06
Cit/Viol. Iss. Rate	45%		52%		54%		52%		52%	
Controllable Iss. Rate	100%		94%		95%		95%		89%	
Non-Violations	Dec-10		3 Month Average		Year to Date Total		Year to Date Average		Aug-10	
	Quantity	% Non-Viol	Quantity	% Non-Viol	Quantity	% Non-Viol	Quantity	% Non-Viol	Quantity	% Non-Viol
Rear Axle Violation	0	0%	0	2%	1	0%	0	0%	0	0%
Right Turn	13	59%	14	75%	121	36%	16	43%	33	73%
No Violation Occurred	9	41%	4	23%	216	64%	21	56%	12	27%
Total Non Violations	22	100%	19	100%	338	100%	37	100%	45	100%
Uncontrollable Non-Iss	Quantity	% of Un.Non	Quantity	% of Un.Non	Quantity	% of Un.Non	Quantity	% of Un.Non	Quantity	% of Un.Non
No Plate	1	4%	3	16%	25	10%	2	9%	4	15%
Out of State Plate	0	0%	0	0%	7	3%	1	2%	0	0%
Glare on Plate	0	0%	0	0%	0	0%	0	0%	0	0%
Illegible Plate	0	0%	0	2%	1	0%	0	0%	1	4%
Plate Obstructed	0	0%	0	0%	0	0%	0	0%	0	0%
Windshield Glare	3	13%	3	18%	91	35%	8	33%	6	22%
Driver Obstructed	0	0%	0	0%	0	0%	0	0%	0	0%
Car Obstructed	0	0%	1	6%	7	3%	1	2%	2	7%
Emergency Vehicle	19	79%	7	43%	99	38%	10	41%	11	41%
No Vehicle Match Found	0	0%	0	0%	0	0%	0	0%	0	0%
No DMV Match Found	1	4%	2	12%	30	11%	3	11%	2	7%
Police Expired	0	0%	0	2%	3	1%	0	1%	1	4%
Other	0	0%	0	0%	0	0%	0	0%	0	0%
Total	24	100%	16	100%	263	100%	24	100%	27	100%
Controllable Non-Iss	Quantity	% Cont. Non	Quantity	% Cont. Non	Quantity	% Cont. Non	Quantity	% Cont. Non	Quantity	% Cont. Non
Framing of Plate	0	0%	0	0%	0	0%	0	0%	0	0%
Focus / Clarity of Plate	0	0%	0	0%	1	5%	0	5%	0	0%
Dark Interior	0	0%	1	100%	12	63%	1	63%	4	100%
Framing of Driver	0	0%	0	0%	0	0%	0	0%	0	0%
Focus / Clarity of Driver	0	0%	0	0%	1	5%	0	5%	0	0%
Framing of Car	0	0%	0	0%	0	0%	0	0%	0	0%
Data Error	0	0%	0	0%	0	0%	0	0%	0	0%
Exposure	0	0%	0	0%	1	5%	0	5%	0	0%
Equipment Malfunction	0	0%	0	0%	3	16%	0	16%	0	0%
Police Return	0	0%	0	0%	1	5%	0	5%	0	0%
ACS Expired	0	0%	0	0%	0	0%	0	0%	0	0%
Total	0	100%	1	100%	19	100%	2	100%	4	100%



A Xerox Company

Los Angeles County Approach Summary Report

Location 131: NB Sepulveda @ Wilshire



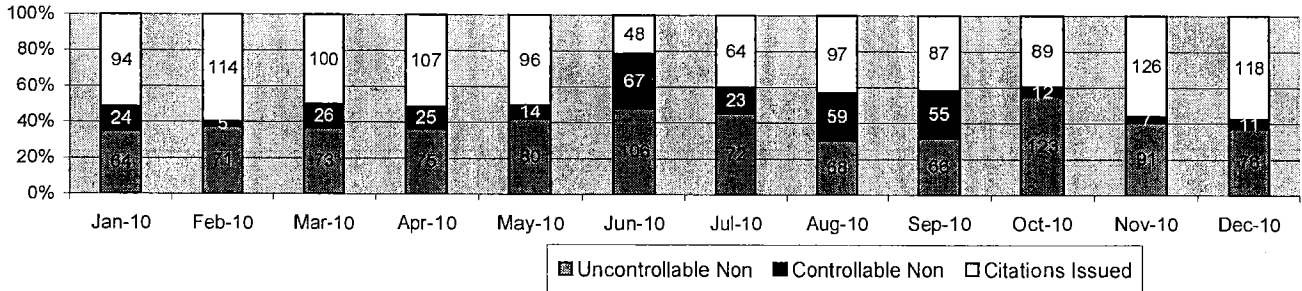
Events	Dec-10		3 Month Average		Year to Date Total		Year to Date Average		2009 Average	
	Quantity	% of Events	Quantity	% of Events	Quantity	% of Events	Quantity	% of Events	Quantity	% of Events
Non Violations	42	79%	20	63%	178	66%	24	74%	28	70%
Violations	11	21%	11	37%	93	34%	8	26%	12	30%
Total Events	53	100%	31	100%	271	100%	32	100%	40	100%
Violations	Quantity	% of Viol	Quantity	% of Viol	Quantity	% of Viol	Quantity	% of Viol	Quantity	% of Viol
Uncont. Non-Issued Viol	5	45%	7	100%	55	59%	5	61%	5	42%
Cont. Non-Issued Viol	1	9%	0	100%	3	3%	0	4%	1	8%
Citations	5	45%	4	38%	35	38%	3	35%	6	50%
Daily Av. Vehicle Counts	4,669		5,556		5,078		5,078		4,546	
Av. Violation Speed	24.3		28.0		28.2		28.2		29.4	
Av. Issued Speed	28.6		30.9		25.2		25.2		34.5	
Av. Violation Sec.	18.5		17.1		10.9		10.9		14.6	
Av. Issued Sec.	9.9		6.1		2.5		2.5		0.3	
Cal. Days/Enforc. Days	31	31	31	31	334	334	30	30	31	31
Daily Citation Yield	0.16	0.16	0.14	0.14	0.10	0.10	0.10	0.10	0.19	0.19
Cit/Viol. Iss. Rate	45%		38%		38%		35%		50%	
Controllable Iss. Rate	83%		93%		92%		90%		86%	
Non-Violations	Quantity	% Non-Viol	Quantity	% Non-Viol	Quantity	% Non-Viol	Quantity	% Non-Viol	Quantity	% Non-Viol
Rear Axle Violation	0	0%	0	2%	1	1%	0	0%	0	0%
Right Turn	8	19%	5	24%	66	37%	8	32%	6	21%
No Violation Occurred	34	81%	15	75%	111	62%	16	68%	22	79%
Total Non Violations	42	100%	20	100%	178	100%	24	100%	28	100%
Uncontrollable Non-Iss	Quantity	% of Un.Non	Quantity	% of Un.Non	Quantity	% of Un.Non	Quantity	% of Un.Non	Quantity	% of Un.Non
No Plate	0	0%	1	20%	8	15%	1	13%	1	20%
Out of State Plate	0	0%	0	0%	1	2%	0	2%	0	0%
Glare on Plate	0	0%	0	0%	0	0%	0	0%	0	0%
Illegible Plate	0	0%	0	0%	0	0%	0	0%	0	0%
Plate Obstructed	0	0%	0	0%	0	0%	0	0%	0	0%
Windshield Glare	0	0%	0	0%	1	2%	0	2%	0	0%
Driver Obstructed	0	0%	0	0%	4	7%	0	7%	0	0%
Car Obstructed	0	0%	0	0%	0	0%	0	0%	0	0%
Emergency Vehicle	5	100%	4	60%	30	55%	3	58%	3	60%
No Vehicle Match Found	0	0%	0	0%	2	4%	0	3%	0	0%
No DMV Match Found	0	0%	1	10%	5	9%	0	8%	1	20%
Police Expired	0	0%	1	10%	4	7%	0	7%	0	0%
Other	0	0%	0	0%	0	0%	0	0%	0	0%
Total	5	100%	7	100%	55	100%	5	100%	5	100%
Controllable Non-Iss	Quantity	% Cont. Non	Quantity	% Cont. Non	Quantity	% Cont. Non	Quantity	% Cont. Non	Quantity	% Cont. Non
Framing of Plate	0	0%	0	0%	0	0%	0	0%	0	0%
Focus / Clarity of Plate	0	0%	0	0%	0	0%	0	0%	0	0%
Dark Interior	0	0%	0	0%	0	0%	0	0%	0	0%
Framing of Driver	0	0%	0	0%	0	0%	0	0%	0	0%
Focus / Clarity of Driver	0	0%	0	100%	1	33%	0	25%	1	100%
Framing of Car	1	100%	0	0%	2	67%	0	75%	0	0%
Data Error	0	0%	0	0%	0	0%	0	0%	0	0%
Exposure	0	0%	0	0%	0	0%	0	0%	0	0%
Equipment Malfunction	0	0%	0	0%	0	0%	0	0%	0	0%
Police Return	0	0%	0	0%	0	0%	0	0%	0	0%
ACS Expired	0	0%	0	0%	0	0%	0	0%	0	0%
Total	1	100%	0	100%	3	100%	0	100%	1	100%



A xerox Company

Los Angeles County Approach Summary Report

Location 132: SB Sepulveda @ Wilshire



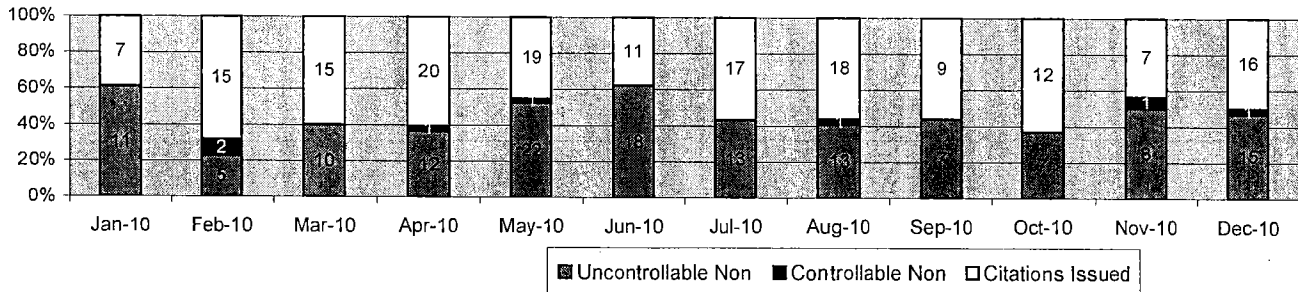
Events	Dec-10		3 Month Average		Year to Date Total		Year to Date Average		2009 Average	
	Quantity	% of Events	Quantity	% of Events	Quantity	% of Events	Quantity	% of Events	Quantity	% of Events
Non Violations	254	55%	269	55%	1888	45%	240	54%	263	54%
Violations	205	45%	219	45%	2346	55%	203	46%	224	46%
Total Events	459	100%	488	100%	4234	100%	443	100%	487	100%
<i>Violations</i>	<i>Quantity</i>	<i>% of Viol</i>	<i>Quantity</i>	<i>% of Viol</i>	<i>Quantity</i>	<i>% of Viol</i>	<i>Quantity</i>	<i>% of Viol</i>	<i>Quantity</i>	<i>% of Viol</i>
Uncont. Non-Issued Viol	76	37%	86	100%	889	38%	80	40%	68	30%
Cont. Non-Issued Viol	11	5%	42	100%	317	14%	27	13%	59	26%
Citations	118	58%	91	42%	1140	49%	95	47%	97	43%
Daily Av. Vehicle Counts	6,336		6,656		6,410		6,410		6,391	
Av. Violation Speed	17.4		17.5		17.6		17.6		17.6	
Av. Issued Speed	17.4		17.4		17.6		17.6		17.6	
Av. Violation Sec.	11.5		11.0		11.0		11.0		11.1	
Av. Issued Sec.	11.8		9.2		10.5		10.5		10.3	
Cal. Days/Enforc. Days	31	31	31	31	334	334	30	30	31	31
Daily Citation Yield	3.81	3.81	2.97	2.97	3.41	3.41	3.12	3.12	3.13	3.13
Cit./Viol. Iss. Rate	58%		42%		49%		47%		43%	
Controllable Iss. Rate	91%		68%		78%		78%		62%	
<i>Non-Violations</i>	<i>Quantity</i>	<i>% Non-Viol</i>	<i>Quantity</i>	<i>% Non-Viol</i>	<i>Quantity</i>	<i>% Non-Viol</i>	<i>Quantity</i>	<i>% Non-Viol</i>	<i>Quantity</i>	<i>% Non-Viol</i>
Rear Axle Violation	0	0%	0	0%	2	0%	0	0%	0	0%
Right Turn	0	0%	0	0%	2	0%	0	0%	0	0%
No Violation Occurred	254	100%	269	100%	1884	100%	239	100%	263	100%
Total Non Violations	254	100%	269	100%	1888	100%	240	100%	263	100%
<i>Uncontrollable Non-Iss</i>	<i>Quantity</i>	<i>% of Un.Non</i>	<i>Quantity</i>	<i>% of Un.Non</i>	<i>Quantity</i>	<i>% of Un.Non</i>	<i>Quantity</i>	<i>% of Un.Non</i>	<i>Quantity</i>	<i>% of Un.Non</i>
No Plate	16	21%	10	12%	97	11%	9	12%	9	13%
Out of State Plate	1	1%	3	4%	33	4%	3	4%	3	4%
Glare on Plate	0	0%	0	0%	1	0%	0	0%	0	0%
Illegible Plate	2	3%	2	2%	17	2%	2	2%	0	0%
Plate Obstructed	0	0%	0	0%	4	0%	0	0%	0	0%
Windshield Glare	24	32%	29	34%	339	38%	30	38%	35	51%
Driver Obstructed	3	4%	8	9%	69	8%	6	7%	3	4%
Car Obstructed	1	1%	2	2%	19	2%	2	2%	1	1%
Emergency Vehicle	2	3%	2	3%	20	2%	2	2%	2	3%
No Vehicle Match Found	0	0%	0	0%	2	0%	0	0%	0	0%
No OVMV Match Found	16	21%	7	8%	96	11%	9	12%	7	10%
Police Expired	11	14%	22	26%	187	21%	17	21%	8	12%
Other	0	0%	0	0%	5	1%	0	1%	0	0%
Total	76	100%	86	100%	889	100%	80	100%	68	100%
<i>Controllable Non-Iss</i>	<i>Quantity</i>	<i>% Cont. Non</i>	<i>Quantity</i>	<i>% Cont. Non</i>	<i>Quantity</i>	<i>% Cont. Non</i>	<i>Quantity</i>	<i>% Cont. Non</i>	<i>Quantity</i>	<i>% Cont. Non</i>
Framing of Plate	0	0%	0	0%	0	0%	0	0%	0	0%
Focus / Clarity of Plate	3	27%	1	2%	14	4%	1	5%	0	0%
Dark Interior	2	18%	30	72%	135	43%	11	42%	47	80%
Framing of Driver	0	0%	0	0%	0	0%	0	0%	0	0%
Focus / Clarity of Driver	6	55%	3	7%	77	24%	7	25%	2	3%
Framing of Car	0	0%	0	0%	0	0%	0	0%	0	0%
Data Error	0	0%	0	0%	14	4%	1	4%	0	0%
Exposure	0	0%	0	1%	1	0%	0	0%	0	0%
Equipment Malfunction	0	0%	8	18%	68	21%	6	21%	10	17%
Police Return	0	0%	0	0%	8	3%	1	2%	0	0%
ACS Expired	0	0%	0	0%	0	0%	0	0%	0	0%
Total	11	100%	42	100%	317	100%	27	100%	59	100%



A xerox Company

Los Angeles County Approach Summary Report

Location 133: EB Wilshire @ Sepulveda



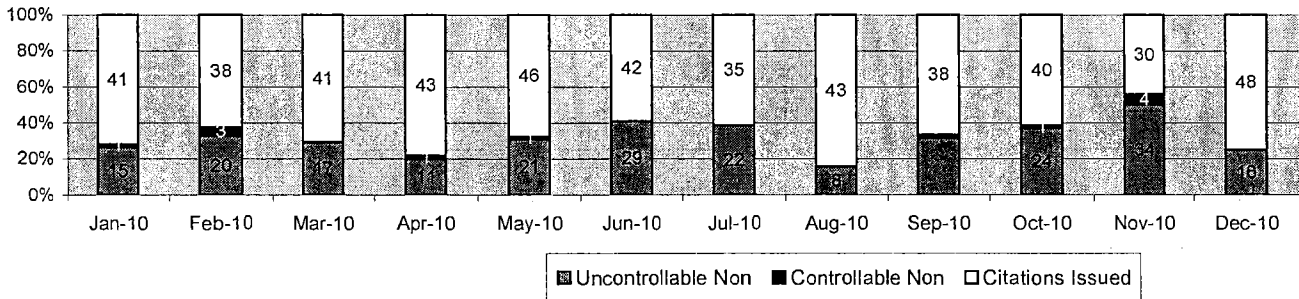
Events	Dec-10		3 Month Average		Year to Date Total		Year to Date Average		2009 Average	
	Quantity	% of Events	Quantity	% of Events	Quantity	% of Events	Quantity	% of Events	Quantity	% of Events
Non Violations	162	84%	180	89%	1711	85%	201	88%	202	86%
Violations	32	16%	22	11%	298	15%	26	12%	32	14%
Total Events	194	100%	202	100%	2009	100%	227	100%	234	100%
<i>Violations</i>	<i>Quantity</i>	<i>% of Viol</i>	<i>Quantity</i>	<i>% of Viol</i>	<i>Quantity</i>	<i>% of Viol</i>	<i>Quantity</i>	<i>% of Viol</i>	<i>Quantity</i>	<i>% of Viol</i>
Uncont. Non-Issued Viol	15	47%	9	100%	126	42%	12	45%	13	41%
Cont. Non-Issued Viol	1	3%	0	100%	6	2%	1	2%	1	3%
Citations	16	50%	13	58%	166	56%	14	53%	18	56%
Daily Av. Vehicle Counts	22,810		26,079		25,236		25,236		25,796	
Av. Violation Speed	27.3		27.5		29.1		29.1		28.1	
Av. Issued Speed	25.5		27.8		31.0		31.0		28.3	
Av. Violation Sec.	3.6		4.9		3.9		3.9		7.6	
Av. Issued Sec.	0.8		0.8		0.8		0.8		1.0	
Cal. Days/Enforc. Days	31	31	31	31	334	334	30	30	31	31
Daily Citation Yield	0.52	0.52	0.42	0.42	0.50	0.50	0.45	0.45	0.58	0.58
Cit./Viol. Iss. Rate	50%		58%		56%		53%		56%	
Controllable Iss. Rate	94%		98%		97%		96%		95%	
<i>Non-Violations</i>	<i>Quantity</i>	<i>% Non-Viol</i>	<i>Quantity</i>	<i>% Non-Viol</i>	<i>Quantity</i>	<i>% Non-Viol</i>	<i>Quantity</i>	<i>% Non-Viol</i>	<i>Quantity</i>	<i>% Non-Viol</i>
Rear Axle Violation	0	0%	0	0%	4	0%	0	0%	1	0%
Right Turn	68	42%	83	46%	589	34%	76	38%	96	48%
No Violation Occurred	94	58%	96	53%	1118	65%	125	62%	105	52%
Total Non Violations	162	100%	180	100%	1711	100%	201	100%	202	100%
<i>Uncontrollable Non-Iss</i>	<i>Quantity</i>	<i>% of Un.Non</i>	<i>Quantity</i>	<i>% of Un.Non</i>	<i>Quantity</i>	<i>% of Un.Non</i>	<i>Quantity</i>	<i>% of Un.Non</i>	<i>Quantity</i>	<i>% of Un.Non</i>
No Plate	4	27%	1	7%	14	11%	2	13%	1	8%
Out of State Plate	0	0%	1	7%	9	7%	1	6%	1	8%
Glare on Plate	0	0%	0	0%	0	0%	0	0%	0	0%
Illegible Plate	0	0%	0	0%	1	1%	0	1%	0	0%
Plate Obstructed	1	7%	0	0%	0	0%	0	1%	0	0%
Windshield Glare	1	7%	2	22%	23	18%	2	17%	4	31%
Driver Obstructed	1	7%	0	0%	1	1%	0	1%	0	0%
Car Obstructed	1	7%	1	7%	5	4%	1	4%	0	0%
Emergency Vehicle	5	33%	3	37%	43	34%	4	34%	4	31%
No Vehicle Match Found	0	0%	0	0%	0	0%	0	0%	0	0%
No DMV Match Found	2	13%	1	15%	12	10%	1	10%	3	23%
Police Expired	0	0%	0	4%	9	7%	1	6%	0	0%
Other	0	0%	0	0%	9	7%	1	6%	0	0%
Total	15	100%	9	100%	126	100%	12	100%	13	100%
<i>Controllable Non-Iss</i>	<i>Quantity</i>	<i>% Cont. Non</i>	<i>Quantity</i>	<i>% Cont. Non</i>	<i>Quantity</i>	<i>% Cont. Non</i>	<i>Quantity</i>	<i>% Cont. Non</i>	<i>Quantity</i>	<i>% Cont. Non</i>
Framing of Plate	0	0%	0	0%	0	0%	0	0%	0	0%
Focus / Clarity of Plate	1	100%	0	0%	1	17%	0	29%	0	0%
Dark Interior	0	0%	0	100%	4	67%	0	57%	1	100%
Framing of Driver	0	0%	0	0%	0	0%	0	0%	0	0%
Focus / Clarity of Driver	0	0%	0	0%	1	17%	0	14%	0	0%
Framing of Car	0	0%	0	0%	0	0%	0	0%	0	0%
Data Error	0	0%	0	0%	0	0%	0	0%	0	0%
Exposure	0	0%	0	0%	0	0%	0	0%	0	0%
Equipment Malfunction	0	0%	0	0%	0	0%	0	0%	0	0%
Police Return	0	0%	0	0%	0	0%	0	0%	0	0%
ACS Expired	0	0%	0	0%	0	0%	0	0%	0	0%
Total	1	100%	0	100%	6	100%	1	100%	1	100%



A XEROX Company

Los Angeles County Approach Summary Report

Location 134: WB Wilshire @ Sepulveda



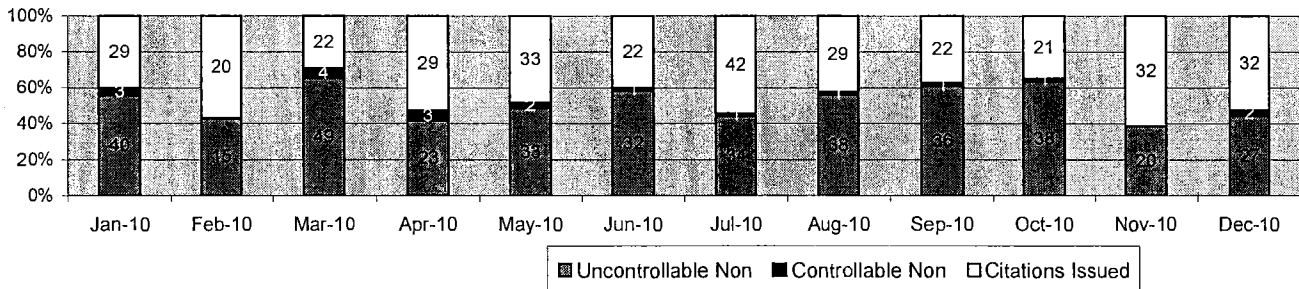
Events	Dec-10		3 Month Average		Year to Date Total		Year to Date Average		2009 Average	
	Quantity	% of Events	Quantity	% of Events	Quantity	% of Events	Quantity	% of Events	Quantity	% of Events
Non Violations	140	69%	183	76%	1107	61%	152	71%	204	80%
Violations	64	31%	58	24%	716	39%	61	29%	51	20%
Total Events	204	100%	241	100%	1823	100%	213	100%	255	100%
<i>Violations</i>	<i>Quantity</i>	<i>% of Viol.</i>	<i>Quantity</i>	<i>% of Viol.</i>	<i>Quantity</i>	<i>% of Viol.</i>	<i>Quantity</i>	<i>% of Viol.</i>	<i>Quantity</i>	<i>% of Viol.</i>
Uncont. Non-Issued Viol	16	25%	17	100%	219	31%	20	32%	8	16%
Cont. Non-Issued Viol	0	0%	1	100%	12	2%	1	2%	0	0%
Citations	48	75%	40	70%	485	68%	40	66%	43	84%
Daily Av. Vehicle Counts	17,271		19,599		20,245		20,245		20,322	
Av. Violation Speed	33.7		33.1		33.7		33.7		33.8	
Av. Issued Speed	34.0		33.3		33.5		33.5		33.6	
Av. Violation Sec.	2.5		2.9		2.3		2.3		2.4	
Av. Issued Sec.	2.6		2.2		2.1		2.1		2.1	
Cal. Days/Enforc. Days	31	31	31	31	334	334	30	30	31	31
Daily Citation Yield	1.55	1.55	1.32	1.32	1.45	1.45	1.33	1.33	1.39	1.39
Cit./Viol. Iss. Rate	75%		70%		68%		66%		84%	
Controllable Iss. Rate	100%		98%		98%		98%		100%	
<i>Non-Violations</i>	<i>Quantity</i>	<i>% Non-Viol</i>	<i>Quantity</i>	<i>% Non-Viol</i>	<i>Quantity</i>	<i>% Non-Viol</i>	<i>Quantity</i>	<i>% Non-Viol</i>	<i>Quantity</i>	<i>% Non-Viol</i>
Rear Axle Violation	0	0%	3	1%	4	0%	1	0%	4	2%
Right Turn	89	64%	97	53%	561	51%	83	55%	132	65%
No Violation Occurred	51	36%	83	46%	542	49%	68	45%	68	33%
Total Non Violations	140	100%	183	100%	1107	100%	152	100%	204	100%
<i>Uncontrollable Non-Iss</i>	<i>Quantity</i>	<i>% of Un.Non</i>	<i>Quantity</i>	<i>% of Un.Non</i>	<i>Quantity</i>	<i>% of Un.Non</i>	<i>Quantity</i>	<i>% of Un.Non</i>	<i>Quantity</i>	<i>% of Un.Non</i>
No Plate	3	19%	2	10%	18	8%	2	9%	0	0%
Out of State Plate	0	0%	3	20%	26	12%	2	11%	1	13%
Glare on Plate	0	0%	0	0%	0	0%	0	0%	0	0%
Illegible Plate	0	0%	0	0%	0	0%	0	0%	0	0%
Plate Obstructed	0	0%	0	0%	2	1%	0	1%	0	0%
Windshield Glare	0	0%	1	4%	34	16%	3	14%	1	13%
Driver Obstructed	1	6%	0	2%	7	3%	1	3%	0	0%
Car Obstructed	0	0%	0	2%	1	0%	0	0%	1	13%
Emergency Vehicle	1	6%	1	4%	29	13%	3	13%	0	0%
No Vehicle Match Found	0	0%	1	4%	3	1%	0	1%	0	0%
No DMV Match Found	5	31%	5	32%	59	27%	5	27%	5	63%
Police Expired	6	38%	4	22%	39	18%	4	19%	0	0%
Other	0	0%	0	0%	1	0%	0	0%	0	0%
Total	16	100%	17	100%	219	100%	20	100%	8	100%
<i>Controllable Non-Iss</i>	<i>Quantity</i>	<i>% Cont. Non</i>	<i>Quantity</i>	<i>% Cont. Non</i>	<i>Quantity</i>	<i>% Cont. Non</i>	<i>Quantity</i>	<i>% Cont. Non</i>	<i>Quantity</i>	<i>% Cont. Non</i>
Framing of Plate	0	0%	0	0%	0	0%	0	0%	0	0%
Focus / Clarity of Plate	0	0%	0	50%	2	17%	0	17%	0	0%
Dark Interior	0	0%	0	50%	5	42%	0	42%	0	0%
Framing of Driver	0	0%	0	0%	0	0%	0	0%	0	0%
Focus / Clarity of Driver	0	0%	0	0%	0	0%	0	0%	0	0%
Framing of Car	0	0%	0	0%	0	0%	0	0%	0	0%
Data Error	0	0%	0	0%	0	0%	0	0%	0	0%
Exposure	0	0%	0	0%	1	8%	0	8%	0	0%
Equipment Malfunction	0	0%	0	0%	2	17%	0	17%	0	0%
Police Return	0	0%	0	0%	2	17%	0	17%	0	0%
ACS Expired	0	0%	0	0%	0	0%	0	0%	0	0%
Total	0	100%	1	100%	12	100%	1	100%	0	100%



A XEROX Company

Los Angeles County Approach Summary Report

Location 144: WB Wilshire @ Sepulveda



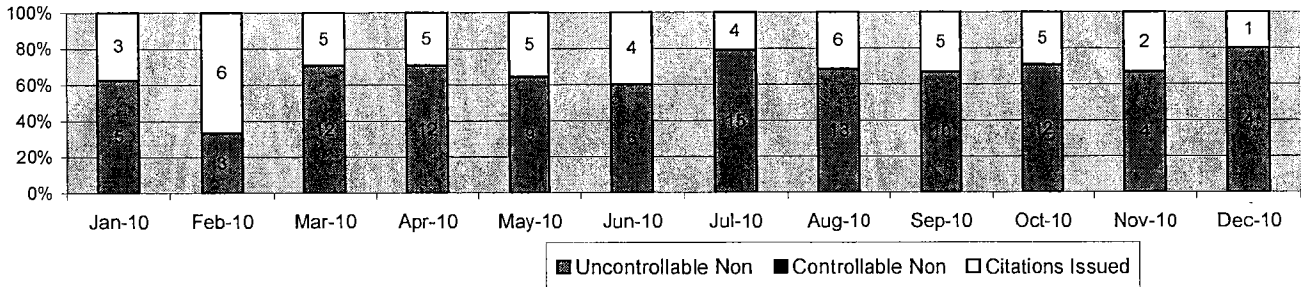
Events	Dec-10		3 Month Average		Year to Date Total		Year to Date Average		2009 Average		
	Quantity	% of Events	Quantity	% of Events	Quantity	% of Events	Quantity	% of Events	Quantity	% of Events	
Non Violations	44	42%	50	45%	685	49%	74	55%	56	45%	
Violations	61	58%	62	55%	708	51%	61	45%	68	55%	
Total Events	105	100%	112	100%	1393	100%	136	100%	124	100%	
Violations		Quantity	% of Viol	Quantity	% of Viol	Quantity	% of Viol	Quantity	% of Viol	Quantity	% of Viol
Uncont. Non-Issued Viol		27	44%	37	100%	358	51%	32	52%	38	56%
Cont. Non-Issued Viol		2	3%	1	100%	17	2%	2	3%	1	1%
Citations		32	52%	24	39%	333	47%	28	45%	29	43%
Daily Av. Vehicle Counts		20,792		23,654		23,318		23,318		24,146	
Av. Violation Speed		33.6		31.0		32.7		32.7		31.0	
Av. Issued Speed		35.6		36.2		36.6		36.6		37.7	
Av. Violation Sec.		3.0		6.2		5.0		5.0		9.8	
Av. Issued Sec.		2.2		1.2		1.9		1.9		1.9	
Cal. Days/Enforc. Days		31		31		334		30		31	
Daily Citation Yield		1.03		0.78		1.00		0.91		0.94	
Cit/Viol. Iss. Rate		52%		39%		47%		45%		43%	
Controllable Iss. Rate		94%		96%		95%		95%		97%	
Non-Violations	Dec-10		3 Month Average		Year to Date Total		Year to Date Average		Aug-10		
	Quantity	% Non-Viol	Quantity	% Non-Viol	Quantity	% Non-Viol	Quantity	% Non-Viol	Quantity	% Non-Viol	
Rear Axle Violation		0	0%	1	2%	3	0%	0	1%	1	2%
Right Turn		0	0%	0	1%	202	29%	17	23%	1	2%
No Violation Occurred		44	100%	49	97%	480	70%	57	76%	54	96%
Total Non Violations		44	100%	50	100%	685	100%	74	100%	56	100%
Uncontrollable Non-Iss		Quantity	% of Un-Non	Quantity	% of Un-Non	Quantity	% of Un-Non	Quantity	% of Un-Non	Quantity	% of Un-Non
No Plate		1	4%	3	7%	31	9%	3	8%	2	5%
Out of State Plate		1	4%	1	3%	22	6%	2	6%	0	0%
Glare on Plate		0	0%	0	0%	0	0%	0	0%	0	0%
Illegible Plate		0	0%	1	4%	6	2%	1	2%	1	3%
Plate Obstructed		0	0%	0	0%	0	0%	0	0%	0	0%
Windshield Glare		1	4%	1	3%	25	7%	2	7%	1	3%
Driver Obstructed		0	0%	2	6%	23	6%	2	6%	3	8%
Car Obstructed		3	11%	1	2%	3	1%	1	2%	1	3%
Emergency Vehicle		12	44%	21	56%	180	50%	16	50%	26	68%
No Vehicle Match Found		0	0%	1	2%	4	1%	0	1%	0	0%
No DMV Match Found		4	15%	3	8%	29	8%	3	9%	4	11%
Police Expired		3	11%	4	10%	31	9%	3	9%	0	0%
Other		2	7%	0	0%	4	1%	1	2%	0	0%
Total		27	100%	37	100%	358	100%	32	100%	38	100%
Controllable Non-Iss		Quantity	% Cont. Non	Quantity	% Cont. Non	Quantity	% Cont. Non	Quantity	% Cont. Non	Quantity	% Cont. Non
Framing of Plate		0	0%	0	0%	0	0%	0	0%	0	0%
Focus / Clarity of Plate		1	50%	0	33%	3	18%	0	21%	1	100%
Dark Interior		1	50%	0	33%	11	65%	1	63%	0	0%
Framing of Driver		0	0%	0	0%	0	0%	0	0%	0	0%
Focus / Clarity of Driver		0	0%	0	0%	0	0%	0	0%	0	0%
Framing of Car		0	0%	0	0%	0	0%	0	0%	0	0%
Data Error		0	0%	0	0%	0	0%	0	0%	0	0%
Exposure		0	0%	0	0%	0	0%	0	0%	0	0%
Equipment Malfunction		0	0%	0	0%	0	0%	0	0%	0	0%
Police Return		0	0%	0	0%	2	12%	0	11%	0	0%
ACS Expired		0	0%	0	33%	1	6%	0	5%	0	0%
Total		2	100%	1	100%	17	100%	2	100%	1	100%



A Xerox Company

Los Angeles County Approach Summary Report

Location 153: EB Whittier Boulevard @ Atlantic Boulevard



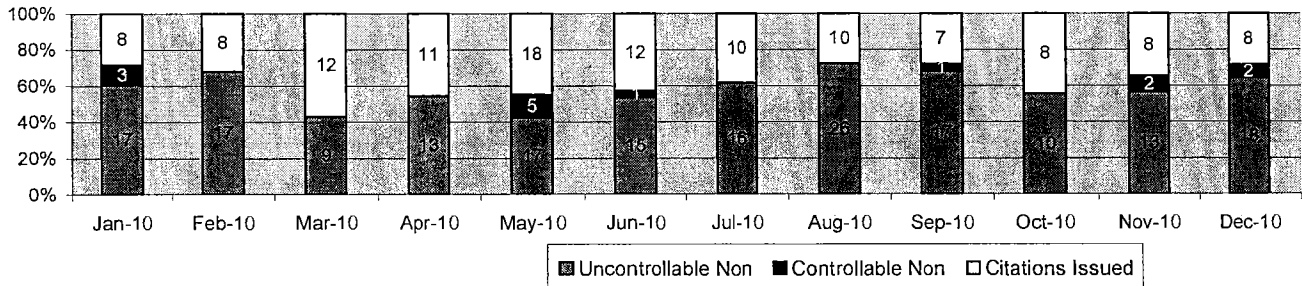
Events	Dec-10		3 Month Average		Year to Date Total		Year to Date Average		2009 Average	
	Quantity	% of Events	Quantity	% of Events	Quantity	% of Events	Quantity	% of Events	Quantity	% of Events
Non Violations	21	81%	15	46%	158	51%	20	61%	17	47%
Violations	5	19%	17	54%	152	49%	13	39%	19	53%
Total Events	26	100%	32	100%	310	100%	33	100%	36	100%
Violations	Quantity	% of Viol	Quantity	% of Viol	Quantity	% of Viol	Quantity	% of Viol	Quantity	% of Viol
Uncont. Non-Issued Viol	4	80%	12	100%	101	66%	9	67%	13	68%
Cont. Non-Issued Viol	0	0%	0	100%	0	0%	0	0%	0	0%
Citations	1	20%	5	31%	51	34%	4	33%	6	32%
Daily Av. Vehicle Counts	7,790		6,978		7,984		7,984		7,797	
Av. Violation Speed	33.4		26.9		28.9		28.9		26.4	
Av. Issued Speed	42.0		33.9		34.4		34.4		34.8	
Av. Violation Sec.	8.0		6.4		6.8		6.8		6.8	
Av. Issued Sec.	0.1		1.3		1.7		1.7		0.2	
Cal. Days/Enforc. Days	31	31	31	31	334	334	30	30	31	31
Daily Citation Yield	0.03	0.03	0.17	0.17	0.15	0.15	0.14	0.14	0.19	0.19
Cit/Viol. Iss. Rate	20%		31%		34%		33%		32%	
Controllable Iss. Rate	100%		100%		100%		100%		100%	
Non-Violations	Quantity	% Non-Viol	Quantity	% Non-Viol	Quantity	% Non-Viol	Quantity	% Non-Viol	Quantity	% Non-Viol
Rear Axle Violation	0	0%	1	5%	1	1%	0	1%	0	0%
Right Turn	8	38%	4	30%	53	34%	7	34%	6	35%
No Violation Occurred	13	62%	10	66%	104	66%	13	65%	11	65%
Total Non Violations	21	100%	15	100%	158	100%	20	100%	17	100%
Uncontrollable Non-Iss	Quantity	% of Un.Non	Quantity	% of Un.Non	Quantity	% of Un.Non	Quantity	% of Un.Non	Quantity	% of Un.Non
No Plate	0	0%	1	6%	4	4%	0	4%	1	8%
Out of State Plate	0	0%	0	0%	0	0%	0	0%	0	0%
Glare on Plate	1	25%	0	0%	0	0%	0	1%	0	0%
Illegible Plate	0	0%	0	0%	0	0%	0	0%	0	0%
Plate Obstructed	0	0%	0	0%	0	0%	0	0%	0	0%
Windshield Glare	0	0%	1	6%	3	3%	0	3%	1	8%
Driver Obstructed	0	0%	0	0%	1	1%	0	1%	0	0%
Car Obstructed	0	0%	1	6%	4	4%	0	4%	1	8%
Emergency Vehicle	2	50%	9	74%	73	72%	6	71%	8	62%
No Vehicle Match Found	0	0%	0	0%	3	3%	0	3%	0	0%
No DMV Match Found	1	25%	1	6%	8	8%	1	9%	1	8%
Police Expired	0	0%	0	3%	5	5%	0	5%	1	8%
Other	0	0%	0	0%	0	0%	0	0%	0	0%
Total	4	100%	12	100%	101	100%	9	100%	13	100%
Controllable Non-Iss	Quantity	% Cont. Non	Quantity	% Cont. Non	Quantity	% Cont. Non	Quantity	% Cont. Non	Quantity	% Cont. Non
Framing of Plate	0	0%	0	0%	0	0%	0	0%	0	0%
Focus / Clarity of Plate	0	0%	0	0%	0	0%	0	0%	0	0%
Dark Interior	0	0%	0	0%	0	0%	0	0%	0	0%
Framing of Driver	0	0%	0	0%	0	0%	0	0%	0	0%
Focus / Clarity of Driver	0	0%	0	0%	0	0%	0	0%	0	0%
Framing of Car	0	0%	0	0%	0	0%	0	0%	0	0%
Data Error	0	0%	0	0%	0	0%	0	0%	0	0%
Exposure	0	0%	0	0%	0	0%	0	0%	0	0%
Equipment Malfunction	0	0%	0	0%	0	0%	0	0%	0	0%
Police Return	0	0%	0	0%	0	0%	0	0%	0	0%
ACS Expired	0	0%	0	0%	0	0%	0	0%	0	0%
Total	0	100%	0	100%	0	100%	0	100%	0	100%



A Xerox Company

Los Angeles County Approach Summary Report

Location 154: WB Whittier Boulevard @ Atlantic Boulevard



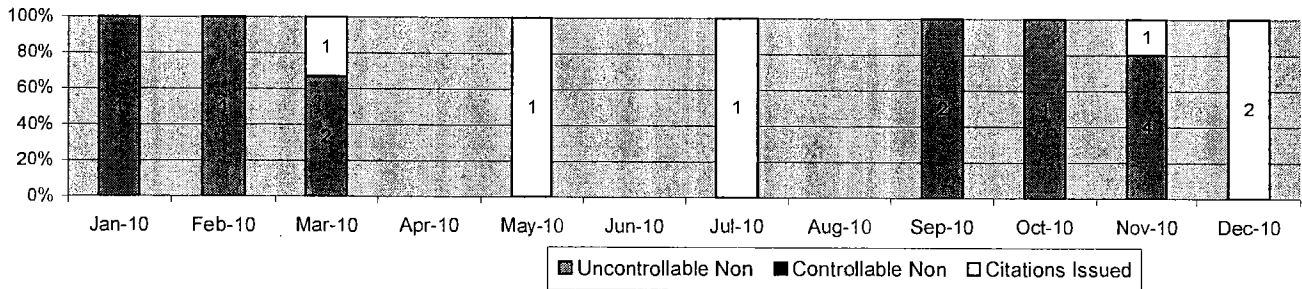
Events	Dec-10		3 Month Average		Year to Date Total		Year to Date Average		2009 Average	
	Quantity	% of Events	Quantity	% of Events	Quantity	% of Events	Quantity	% of Events	Quantity	% of Events
Non Violations	5	15%	20	44%	127	30%	16	37%	21	37%
Violations	28	85%	26	56%	302	70%	27	63%	36	63%
Total Events	33	100%	47	100%	429	100%	43	100%	57	100%
Violations	Quantity	% of Viol	Quantity	% of Viol	Quantity	% of Viol	Quantity	% of Viol	Quantity	% of Viol
Uncont. Non-Issued Viol	18	64%	18	100%	170	56%	16	58%	26	72%
Cont. Non-Issued Viol	2	7%	0	100%	12	4%	1	4%	0	0%
Citations	8	29%	8	32%	120	40%	10	37%	10	28%
Daily Av. Vehicle Counts	8,885		7,890		8,603		8,603		8,763	
Av. Violation Speed	29.7		29.7		31.5		31.5		28.3	
Av. Issued Speed	34.1		35.6		36.6		36.6		36.5	
Av. Violation Sec.	1.5		3.5		3.3		3.3		4.9	
Av. Issued Sec.	0.2		0.3		0.3		0.3		0.3	
Cal. Days/Enforc. Days	31	31	31	31	334	334	30	30	31	31
Daily Citation Yield	0.26	0.26	0.27	0.27	0.36	0.36	0.33	0.33	0.32	0.32
Cit/Viol. Iss. Rate	29%		32%		40%		37%		28%	
Controllable Iss. Rate	80%		96%		91%		90%		100%	
Non-Violations	Quantity	% Non-Viol	Quantity	% Non-Viol	Quantity	% Non-Viol	Quantity	% Non-Viol	Quantity	% Non-Viol
Rear Axle Violation	0	0%	0	2%	1	1%	0	1%	0	0%
Right Turn	0	0%	5	25%	23	18%	3	20%	8	38%
No Violation Occurred	5	100%	15	74%	103	81%	13	80%	13	62%
Total Non Violations	5	100%	20	100%	127	100%	16	100%	21	100%
Uncontrollable Non-Iss	Quantity	% of Un.Non	Quantity	% of Un.Non	Quantity	% of Un.Non	Quantity	% of Un.Non	Quantity	% of Un.Non
No Plate	0	0%	1	6%	14	8%	1	7%	2	8%
Out of State Plate	0	0%	0	0%	1	1%	0	1%	0	0%
Glare on Plate	1	6%	0	0%	0	0%	0	1%	0	0%
Illegible Plate	0	0%	0	2%	3	2%	0	2%	0	0%
Plate Obstructed	0	0%	0	2%	3	2%	0	2%	1	4%
Windshield Glare	0	0%	2	13%	15	9%	1	8%	2	8%
Driver Obstructed	0	0%	0	0%	1	1%	0	1%	0	0%
Car Obstructed	3	17%	0	0%	0	0%	0	2%	0	0%
Emergency Vehicle	11	61%	8	47%	95	56%	9	56%	15	58%
No Vehicle Match Found	0	0%	0	0%	0	0%	0	0%	0	0%
No DMV Match Found	2	11%	3	15%	29	17%	3	16%	3	12%
Police Expired	0	0%	2	9%	5	3%	0	3%	3	12%
Other	1	6%	1	6%	4	2%	0	3%	0	0%
Total	18	100%	18	100%	170	100%	16	100%	26	100%
Controllable Non-Iss	Quantity	% Cont. Non	Quantity	% Cont. Non	Quantity	% Cont. Non	Quantity	% Cont. Non	Quantity	% Cont. Non
Framing of Plate	0	0%	0	0%	0	0%	0	0%	0	0%
Focus / Clarity of Plate	0	0%	0	0%	2	17%	0	14%	0	0%
Dark Interior	0	0%	0	100%	1	8%	0	7%	0	0%
Framing of Driver	0	0%	0	0%	0	0%	0	0%	0	0%
Focus / Clarity of Driver	0	0%	0	0%	0	0%	0	0%	0	0%
Framing of Car	0	0%	0	0%	0	0%	0	0%	0	0%
Data Error	0	0%	0	0%	2	17%	0	14%	0	0%
Exposure	0	0%	0	0%	0	0%	0	0%	0	0%
Equipment Malfunction	2	100%	0	0%	6	50%	1	57%	0	0%
Police Return	0	0%	0	0%	1	8%	0	7%	0	0%
ACS Expired	0	0%	0	0%	0	0%	0	0%	0	0%
Total	2	100%	0	100%	12	100%	1	100%	0	100%



A XEROX Company

Los Angeles County Approach Summary Report

Location 163: EB 1st Street @ Eastern Avenue



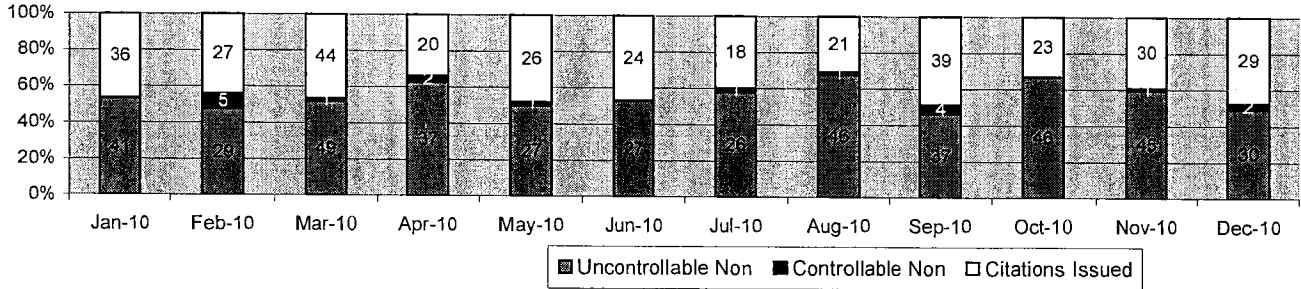
Events	Dec-10		3 Month Average		Year to Date Total		Year to Date Average		2009 Average	
	Quantity	% of Events	Quantity	% of Events	Quantity	% of Events	Quantity	% of Events	Quantity	% of Events
Non Violations	10	83%	56	98%	697	98%	58	98%	113	97%
Violations	2	17%	1	2%	15	2%	1	2%	3	3%
Total Events	12	100%	57	100%	712	100%	60	100%	116	100%
<i>Violations</i>	<i>Quantity</i>	<i>% of Viol</i>	<i>Quantity</i>	<i>% of Viol</i>	<i>Quantity</i>	<i>% of Viol</i>	<i>Quantity</i>	<i>% of Viol</i>	<i>Quantity</i>	<i>% of Viol</i>
Uncont. Non-Issued Viol	0	0%	1	100%	11	73%	1	65%	2	141%
Cont. Non-Issued Viol	0	0%	0	0%	0	0%	0	0%	0	0%
Citations	2	100%	0	0%	4	27%	1	35%	1	41%
Daily Av. Vehicle Counts	4,865		4,102		3,154		3,154		2,304	
Av. Violation Speed	34.0		11.8		23.5		23.5		14.2	
Av. Issued Speed	34.0		0.0		16.6		16.6		10.9	
Av. Violation Sec.	12.7		22.8		9.8		9.8		12.2	
Av. Issued Sec.	12.7		0.0		3.2		3.2		7.8	
Cal. Days/Enforc. Days	31	4	31	10	365	192	30	16	30	17
Daily Citation Yield	0.06	0.50	0.00	0.00	0.01	0.02	0.02	0.03	0.02	0.04
Cit./Viol. Iss. Rate	0%		0%		27%		35%		19%	
Controllable Iss. Rate	0%		#DIV/0!		100%		100%		100%	
<i>Non-Violations</i>	<i>Quantity</i>	<i>% Non-Viol</i>	<i>Quantity</i>	<i>% Non-Viol</i>	<i>Quantity</i>	<i>% Non-Viol</i>	<i>Quantity</i>	<i>% Non-Viol</i>	<i>Quantity</i>	<i>% Non-Viol</i>
Rear Axle Violation	0	0%	4	7%	12	2%	1	2%	0	0%
Right Turn	5	50%	22	38%	275	39%	23	39%	44	39%
No Violation Occurred	5	50%	31	54%	410	59%	34	59%	69	61%
Total Non Violations	10	100%	56	100%	697	100%	58	100%	113	100%
<i>Uncontrollable Non-Iss</i>	<i>Quantity</i>	<i>% of Un.Non</i>	<i>Quantity</i>	<i>% of Un.Non</i>	<i>Quantity</i>	<i>% of Un.Non</i>	<i>Quantity</i>	<i>% of Un.Non</i>	<i>Quantity</i>	<i>% of Un.Non</i>
No Plate	0	0%	0	0%	1	9%	0	9%	0	0%
Out of State Plate	0	0%	0	0%	0	0%	0	0%	0	0%
Glare on Plate	0	0%	0	0%	0	0%	0	0%	0	0%
Illegible Plate	0	0%	0	0%	1	9%	0	9%	0	0%
Plate Obstructed	0	0%	0	0%	0	0%	0	0%	0	0%
Windshield Glare	0	0%	0	0%	0	0%	0	0%	0	0%
Driver Obstructed	0	0%	0	0%	0	0%	0	0%	0	0%
Car Obstructed	0	0%	0	0%	0	0%	0	0%	0	0%
Emergency Vehicle	0	0%	1	100%	6	55%	1	55%	2	100%
No Vehicle Match Found	0	0%	0	0%	0	0%	0	0%	0	0%
No DMV Match Found	0	0%	0	0%	3	27%	0	27%	0	0%
Police Expired	0	0%	0	0%	0	0%	0	0%	0	0%
Other	0	0%	0	0%	0	0%	0	0%	0	0%
Total	0	100%	1	100%	11	100%	1	100%	2	100%
<i>Controllable Non-Iss</i>	<i>Quantity</i>	<i>% Cont. Non</i>	<i>Quantity</i>	<i>% Cont. Non</i>	<i>Quantity</i>	<i>% Cont. Non</i>	<i>Quantity</i>	<i>% Cont. Non</i>	<i>Quantity</i>	<i>% Cont. Non</i>
Framing of Plate	0	0%	0	0%	0	0%	0	0%	0	0%
Focus / Clarity of Plate	0	0%	0	0%	0	0%	0	0%	0	0%
Dark Interior	0	0%	0	0%	0	0%	0	0%	0	0%
Framing of Driver	0	0%	0	0%	0	0%	0	0%	0	0%
Focus / Clarity of Driver	0	0%	0	0%	0	0%	0	0%	0	0%
Framing of Car	0	0%	0	0%	0	0%	0	0%	0	0%
Data Error	0	0%	0	0%	0	0%	0	0%	0	0%
Exposure	0	0%	0	0%	0	0%	0	0%	0	0%
Equipment Malfunction	0	0%	0	0%	0	0%	0	0%	0	0%
Police Return	0	0%	0	0%	0	0%	0	0%	0	0%
ACS Expired	0	0%	0	0%	0	0%	0	0%	0	0%
Total	0	100%	0	100%	0	100%	0	100%	0	100%



A xerox Company

Los Angeles County Approach Summary Report

Location 164: WB 1st Street @ Eastern Avenue



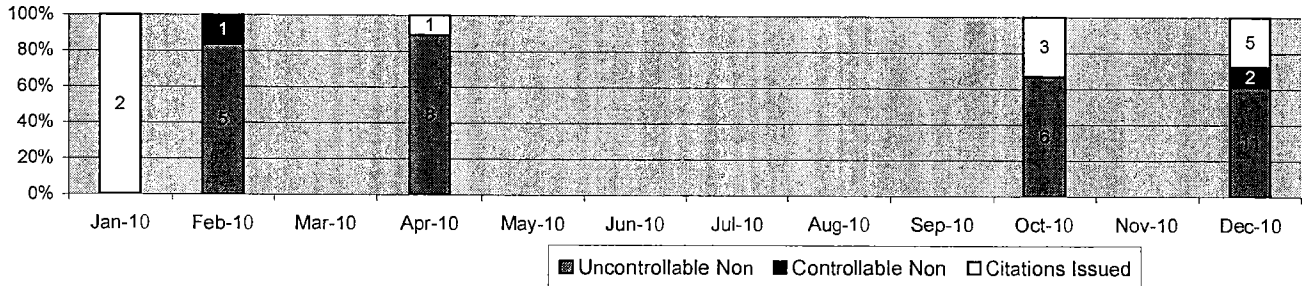
Events	Dec-10		3 Month Average		Year to Date Total		Year to Date Average		2009 Average	
	Quantity	% of Events	Quantity	% of Events	Quantity	% of Events	Quantity	% of Events	Quantity	% of Events
Non Violations	250	80%	315	81%	2241	75%	290	81%	211	76%
Violations	61	20%	72	19%	763	25%	66	19%	68	24%
Total Events	311	100%	387	100%	3004	100%	356	100%	279	100%
Violations	Quantity	% of Viol	Quantity	% of Viol	Quantity	% of Viol	Quantity	% of Viol	Quantity	% of Viol
Uncont. Non-Issued Viol	30	49%	43	100%	410	54%	37	55%	46	68%
Cont. Non-Issued Viol	2	3%	2	100%	16	2%	2	2%	1	1%
Citations	29	48%	28	38%	337	44%	28	42%	21	31%
Daily Av. Vehicle Counts	5,167		4,570		4,821		4,821		3,308	
Av. Violation Speed	18.4		19.2		18.7		18.7		19.6	
Av. Issued Speed	17.6		18.6		17.9		17.9		19.6	
Av. Violation Sec.	9.5		12.7		11.1		11.1		9.2	
Av. Issued Sec.	8.7		10.1		9.6		9.6		7.1	
Cal. Days/Enforc. Days	31	31	31	31	334	334	30	30	31	31
Daily Citation Yield	0.94	0.94	0.90	0.90	1.01	1.01	0.92	0.92	0.68	0.68
Cit/Viol. Iss. Rate	48%		38%		44%		42%		31%	
Controllable Iss. Rate	94%		94%		95%		95%		95%	
Non-Violations	Dec-10		3 Month Average		Year to Date Total		Year to Date Average		Aug-10	
	Quantity	% Non-Viol	Quantity	% Non-Viol	Quantity	% Non-Viol	Quantity	% Non-Viol	Quantity	% Non-Viol
Rear Axle Violation	0	0%	0	0%	0	0%	0	0%	0	0%
Right Turn	0	0%	0	0%	6	0%	1	0%	0	0%
No Violation Occurred	250	100%	315	100%	2235	100%	289	100%	211	100%
Total Non Violations	250	100%	315	100%	2241	100%	290	100%	211	100%
Uncontrollable Non-Iss	Quantity	% of Un.Non	Quantity	% of Un.Non	Quantity	% of Un.Non	Quantity	% of Un.Non	Quantity	% of Un.Non
No Plate	1	3%	2	4%	17	4%	2	4%	3	7%
Out of State Plate	0	0%	0	1%	4	1%	0	1%	0	0%
Glare on Plate	0	0%	0	0%	0	0%	0	0%	0	0%
Illegible Plate	0	0%	0	0%	1	0%	0	0%	0	0%
Plate Obstructed	0	0%	0	0%	3	1%	0	1%	0	0%
Windshield Glare	0	0%	6	15%	48	12%	4	11%	10	22%
Driver Obstructed	0	0%	1	2%	6	1%	1	1%	1	2%
Car Obstructed	0	0%	0	0%	1	0%	0	0%	0	0%
Emergency Vehicle	17	57%	27	64%	255	62%	23	62%	25	54%
No Vehicle Match Found	0	0%	0	1%	3	1%	0	1%	0	0%
No DMV Match Found	10	33%	5	12%	65	16%	6	17%	7	15%
Police Expired	2	7%	1	2%	7	2%	1	2%	0	0%
Other	0	0%	0	0%	0	0%	0	0%	0	0%
Total	30	100%	43	100%	410	100%	37	100%	46	100%
Controllable Non-Iss	Quantity	% Cont. Non	Quantity	% Cont. Non	Quantity	% Cont. Non	Quantity	% Cont. Non	Quantity	% Cont. Non
Framing of Plate	0	0%	0	0%	0	0%	0	0%	0	0%
Focus / Clarity of Plate	0	0%	0	0%	0	0%	0	0%	0	0%
Dark Interior	0	0%	1	80%	10	63%	1	56%	1	100%
Framing of Driver	0	0%	0	0%	0	0%	0	0%	0	0%
Focus / Clarity of Driver	0	0%	0	0%	2	13%	0	11%	0	0%
Framing of Car	0	0%	0	0%	0	0%	0	0%	0	0%
Data Error	0	0%	0	0%	0	0%	0	0%	0	0%
Exposure	0	0%	0	0%	0	0%	0	0%	0	0%
Equipment Malfunction	0	0%	0	0%	1	6%	0	6%	0	0%
Police Return	2	100%	0	20%	3	19%	0	28%	0	0%
ACS Expired	0	0%	0	0%	0	0%	0	0%	0	0%
Total	2	100%	2	100%	16	100%	2	100%	1	100%



A xerox Company

Los Angeles County Approach Summary Report

Location 171: NB Carmenita Road @ Leffingwell Road



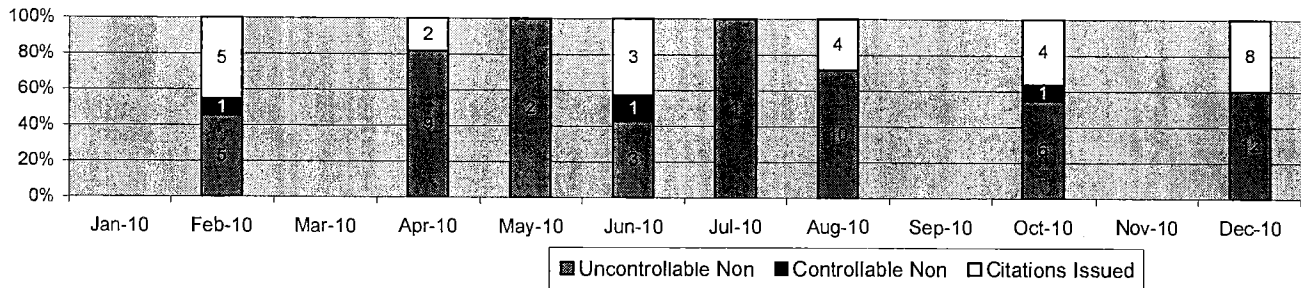
Events	Dec-10		3 Month Average		Year to Date Total		Year to Date Average		2009 Average	
	Quantity	% of Events	Quantity	% of Events	Quantity	% of Events	Quantity	% of Events	Quantity	% of Events
Non Violations	331	95%	81	96%	493	95%	69	95%	84	97%
Violations	18	5%	3	4%	26	5%	4	5%	3	3%
Total Events	349	100%	84	100%	519	100%	72	100%	87	100%
Violations	Quantity	% of Viol	Quantity	% of Viol	Quantity	% of Viol	Quantity	% of Viol	Quantity	% of Viol
Uncont. Non-Issued Viol	11	61%	2	100%	19	73%	3	68%	2	45%
Cont. Non-Issued Viol	2	11%	0	100%	1	4%	0	7%	0	0%
Citations	5	28%	1	33%	6	23%	1	27%	1	23%
Daily Av. Vehicle Counts	6,591		2,576		2,490		2,490		3,599	
Av. Violation Speed	29.8		10.6		12.0		12.0		13.3	
Av. Issued Speed	30.0		9.9		11.0		11.0		12.5	
Av. Violation Sec.	17.8		1.3		5.3		5.3		6.8	
Av. Issued Sec.	25.5		1.1		6.6		6.6		4.8	
Cal. Days/Enforc. Days	31	31	31	11	334	96	30	11	30	15
Daily Citation Yield	0.16	0.16	0.03	0.09	0.02	0.06	0.03	0.09	0.03	0.06
Cit /Viol. Iss. Rate	28%		33%		23%		27%		29%	
Controllable Iss. Rate	71%		100%		86%		80%		100%	
Non-Violations	Quantity	% Non-Viol	Quantity	% Non-Viol	Quantity	% Non-Viol	Quantity	% Non-Viol	Quantity	% Non-Viol
Rear Axle Violation	0	0%	0	0%	0	0%	0	0%	0	0%
Right Turn	52	16%	17	21%	95	19%	12	18%	19	23%
No Violation Occurred	279	84%	64	79%	398	81%	56	82%	65	77%
Total Non Violations	331	100%	81	100%	493	100%	69	100%	84	100%
Uncontrollable Non-Iss	Quantity	% of Un.Non	Quantity	% of Un.Non	Quantity	% of Un.Non	Quantity	% of Un.Non	Quantity	% of Un.Non
No Plate	2	18%	0	0%	0	0%	0	7%	0	5%
Out of State Plate	0	0%	0	0%	0	0%	0	0%	0	0%
Glare on Plate	0	0%	0	0%	0	0%	0	0%	0	0%
Illegible Plate	0	0%	0	0%	0	0%	0	0%	0	0%
Plate Obstructed	0	0%	0	0%	0	0%	0	0%	0	0%
Windshield Glare	1	9%	0	0%	1	5%	0	7%	0	15%
Driver Obstructed	0	0%	0	0%	0	0%	0	0%	0	0%
Car Obstructed	0	0%	0	17%	1	5%	0	3%	0	5%
Emergency Vehicle	6	55%	1	33%	14	74%	2	67%	1	45%
No Vehicle Match Found	0	0%	0	0%	0	0%	0	0%	0	0%
No DMV Match Found	2	18%	1	50%	3	16%	0	17%	0	15%
Police Expired	0	0%	0	0%	0	0%	0	0%	0	15%
Other	0	0%	0	0%	0	0%	0	0%	0	0%
Total	11	100%	2	100%	19	100%	3	100%	2	100%
Controllable Non-Iss	Quantity	% Cont. Non	Quantity	% Cont. Non	Quantity	% Cont. Non	Quantity	% Cont. Non	Quantity	% Cont. Non
Framing of Plate	0	0%	0	0%	0	0%	0	0%	0	0%
Focus / Clarity of Plate	0	0%	0	0%	0	0%	0	0%	0	0%
Dark Interior	0	0%	0	0%	0	0%	0	0%	0	0%
Framing of Driver	0	0%	0	0%	0	0%	0	0%	0	0%
Focus / Clarity of Driver	0	0%	0	0%	0	0%	0	0%	0	0%
Framing of Car	0	0%	0	0%	0	0%	0	0%	0	0%
Data Error	0	0%	0	0%	0	0%	0	0%	0	0%
Exposure	0	0%	0	0%	0	0%	0	0%	0	0%
Equipment Malfunction	0	0%	0	0%	0	0%	0	0%	0	0%
Police Return	2	100%	0	0%	1	100%	0	109%	0	0%
ACS Expired	0	0%	0	0%	0	0%	0	0%	0	0%
Total	2	100%	0	100%	1	100%	0	109%	0	100%



A Xerox Company

Los Angeles County Approach Summary Report

Location 172: SB Carmenita Road @ Leffingwell Road



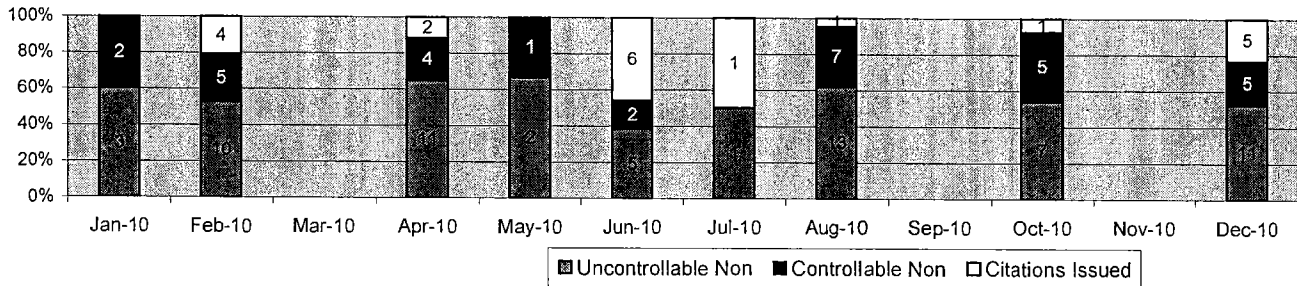
Events	Dec-10		3 Month Average		Year to Date Total		Year to Date Average		2009 Average	
	Quantity	% of Events	Quantity	% of Events	Quantity	% of Events	Quantity	% of Events	Quantity	% of Events
Non Violations	180	90%	104	93%	758	93%	78	92%	164	92%
Violations	20	10%	8	7%	57	7%	6	8%	14	8%
Total Events	200	100%	112	100%	815	100%	85	100%	178	100%
Violations	Quantity	% of Viol	Quantity	% of Viol	Quantity	% of Viol	Quantity	% of Viol	Quantity	% of Viol
Uncont. Non-Issued Viol	12	60%	5	100%	36	63%	4	62%	10	71%
Cont. Non-Issued Viol	0	0%	0	100%	3	5%	0	4%	0	0%
Citations	8	40%	3	32%	18	32%	2	34%	4	29%
Daily Av. Vehicle Counts	6,422		16,873		8,044		8,044		4,079	
Av. Violation Speed	34.1		20.8		21.2		21.2		28.8	
Av. Issued Speed	37.8		30.4		21.0		21.0		42.8	
Av. Violation Sec.	30.0		7.8		8.3		8.3		13.7	
Av. Issued Sec.	44.6		10.5		8.7		8.7		18.0	
Cal. Days/Enforc. Days	31	31	31	21	334	158	30	16	31	31
Daily Citation Yield	0.26	0.26	0.09	0.13	0.05	0.11	0.07	0.14	0.13	0.13
Cit /Viol. Iss. Rate	40%		32%		32%		34%		29%	
Controllable Iss. Rate	100%		89%		86%		90%		0%	
Non-Violations	Dec-10		3 Month Average		Year to Date Total		Year to Date Average		Aug-10	
	Quantity	% Non-Viol	Quantity	% Non-Viol	Quantity	% Non-Viol	Quantity	% Non-Viol	Quantity	% Non-Viol
Rear Axle Violation	0	0%	0	0%	2	0%	0	0%	0	0%
Right Turn	60	33%	48	47%	348	46%	34	43%	76	46%
No Violation Occurred	120	67%	55	53%	408	54%	44	56%	88	54%
Total Non Violations	180	100%	104	100%	758	100%	78	100%	164	100%
Uncontrollable Non-Iss	Quantity	% of Un.Non	Quantity	% of Un.Non	Quantity	% of Un.Non	Quantity	% of Un.Non	Quantity	% of Un.Non
No Plate	0	0%	1	19%	3	8%	0	6%	1	10%
Out of State Plate	1	8%	0	0%	0	0%	0	2%	0	0%
Glare on Plate	0	0%	0	0%	0	0%	0	0%	0	0%
Illegible Plate	0	0%	0	0%	0	0%	0	0%	0	0%
Plate Obstructed	0	0%	0	0%	0	0%	0	0%	0	0%
Windshield Glare	1	8%	0	0%	1	3%	0	4%	0	0%
Driver Obstructed	0	0%	0	0%	0	0%	0	0%	0	0%
Car Obstructed	0	0%	0	6%	3	8%	0	6%	0	0%
Emergency Vehicle	2	17%	3	56%	20	56%	2	46%	7	70%
No Vehicle Match Found	0	0%	0	0%	0	0%	0	0%	0	0%
No DMV Match Found	8	67%	1	13%	6	17%	1	29%	2	20%
Police Expired	0	0%	0	6%	3	8%	0	6%	0	0%
Other	0	0%	0	0%	0	0%	0	0%	0	0%
Total	12	100%	5	100%	36	100%	4	100%	10	100%
Controllable Non-Iss	Quantity	% Cont. Non	Quantity	% Cont. Non	Quantity	% Cont. Non	Quantity	% Cont. Non	Quantity	% Cont. Non
Framing of Plate	0	0%	0	0%	0	0%	0	0%	0	0%
Focus / Clarity of Plate	0	0%	0	0%	0	0%	0	0%	0	0%
Dark Interior	0	0%	0	0%	1	33%	0	33%	0	0%
Framing of Driver	0	0%	0	0%	0	0%	0	0%	0	0%
Focus / Clarity of Driver	0	0%	0	0%	0	0%	0	0%	0	0%
Framing of Car	0	0%	0	0%	0	0%	0	0%	0	0%
Data Error	0	0%	0	0%	0	0%	0	0%	0	0%
Exposure	0	0%	0	100%	1	33%	0	33%	0	0%
Equipment Malfunction	0	0%	0	0%	0	0%	0	0%	0	0%
Police Return	0	0%	0	0%	1	33%	0	33%	0	0%
ACS Expired	0	0%	0	0%	0	0%	0	0%	0	0%
Total	0	100%	0	100%	3	100%	0	100%	0	100%



A XEROX Company

Los Angeles County Approach Summary Report

Location 183: EB Telegraph Road @ Colima Road



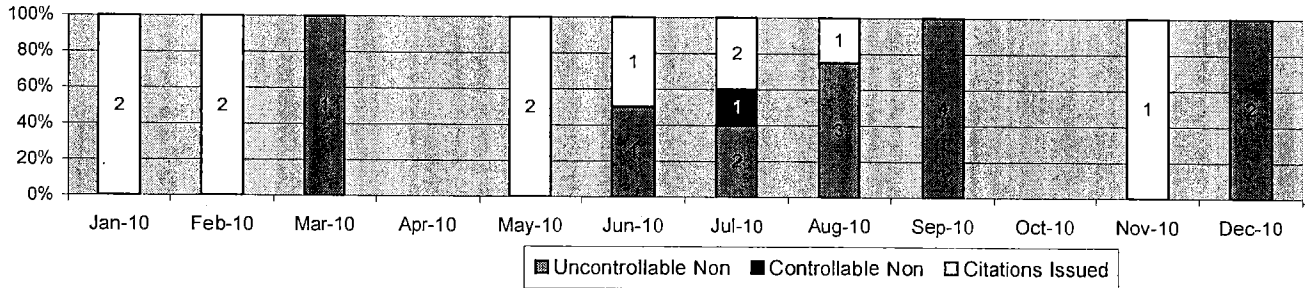
Events	Dec-10		3 Month Average		Year to Date Total		Year to Date Average		2009 Average	
	Quantity	% of Events	Quantity	% of Events	Quantity	% of Events	Quantity	% of Events	Quantity	% of Events
Non Violations	98	82%	70	86%	576	86%	56	86%	119	85%
Violations	21	18%	11	14%	93	14%	10	14%	21	15%
Total Events	119	100%	81	100%	669	100%	66	100%	140	100%
Violations	Quantity	% of Viol.	Quantity	% of Viol.	Quantity	% of Viol.	Quantity	% of Viol.	Quantity	% of Viol.
Uncont. Non-Issued Viol	11	52%	7	100%	52	56%	5	55%	13	62%
Cont. Non-Issued Viol	5	24%	4	100%	26	28%	3	27%	7	33%
Citations	5	24%	1	6%	15	16%	2	18%	1	5%
Daily Av. Vehicle Counts	7,697		18,742		8,962		8,962		4,792	
Av. Violation Speed	29.5		20.0		21.2		21.2		33.0	
Av. Issued Speed	37.8		30.0		23.0		23.0		46.0	
Av. Violation Sec.	10.4		10.8		9.4		9.4		14.9	
Av. Issued Sec.	4.1		18.5		7.6		7.6		36.1	
Cal. Days/Enforc. Days	31	31	31	21	334	159	30	16	31	31
Daily Citation Yield	0.16	0.16	0.02	0.03	0.04	0.09	0.05	0.11	0.03	0.03
Cit./Viol. Iss. Rate	24%		6%		16%		18%		5%	
Controllable Iss. Rate	50%		14%		37%		39%		13%	
Non-Violations	Dec-10		3 Month Average		Year to Date Total		Year to Date Average		Aug-10	
	Quantity	% Non-Viol	Quantity	% Non-Viol	Quantity	% Non-Viol	Quantity	% Non-Viol	Quantity	% Non-Viol
Rear Axle Violation	0	0%	0	0%	0	0%	0	0%	0	0%
Right Turn	28	29%	31	44%	214	37%	20	36%	57	48%
No Violation Occurred	70	71%	39	56%	362	63%	36	64%	62	52%
Total Non Violations	98	100%	70	100%	576	100%	56	100%	119	100%
Uncontrollable Non-Iss	Quantity	% of Un.Non	Quantity	% of Un.Non	Quantity	% of Un.Non	Quantity	% of Un.Non	Quantity	% of Un.Non
No Plate	1	9%	0	5%	1	2%	0	3%	1	8%
Out of State Plate	0	0%	0	0%	0	0%	0	0%	0	0%
Glare on Plate	0	0%	0	0%	0	0%	0	0%	0	0%
Illegible Plate	0	0%	0	0%	0	0%	0	0%	0	0%
Plate Obstructed	0	0%	0	0%	0	0%	0	0%	0	0%
Windshield Glare	0	0%	0	0%	1	2%	0	2%	0	0%
Driver Obstructed	0	0%	0	0%	0	0%	0	0%	0	0%
Car Obstructed	0	0%	0	0%	0	0%	0	0%	0	0%
Emergency Vehicle	10	91%	6	85%	46	88%	5	89%	12	92%
No Vehicle Match Found	0	0%	0	0%	0	0%	0	0%	0	0%
No DMV Match Found	0	0%	0	5%	2	4%	0	3%	0	0%
Police Expired	0	0%	0	5%	1	2%	0	2%	0	0%
Other	0	0%	0	0%	1	2%	0	2%	0	0%
Total	11	100%	7	100%	52	100%	5	100%	13	100%
Controllable Non-Iss	Quantity	% Cont. Non	Quantity	% Cont. Non	Quantity	% Cont. Non	Quantity	% Cont. Non	Quantity	% Cont. Non
Framing of Plate	0	0%	0	0%	0	0%	0	0%	0	0%
Focus / Clarity of Plate	0	0%	0	0%	1	4%	0	3%	0	0%
Dark Interior	1	20%	3	67%	12	46%	1	42%	6	86%
Framing of Driver	0	0%	0	0%	0	0%	0	0%	0	0%
Focus / Clarity of Driver	0	0%	0	0%	1	4%	0	3%	0	0%
Framing of Car	0	0%	0	0%	0	0%	0	0%	0	0%
Data Error	0	0%	0	0%	0	0%	0	0%	0	0%
Exposure	0	0%	0	0%	0	0%	0	0%	0	0%
Equipment Malfunction	0	0%	1	17%	4	15%	0	13%	0	0%
Police Return	4	80%	1	17%	8	31%	1	39%	1	14%
ACS Expired	0	0%	0	0%	0	0%	0	0%	0	0%
Total	5	100%	4	100%	26	100%	3	100%	7	100%



A XEROX Company

Los Angeles County Approach Summary Report

Location 201: NB Hollenbeck Avenue @ Cypress Street



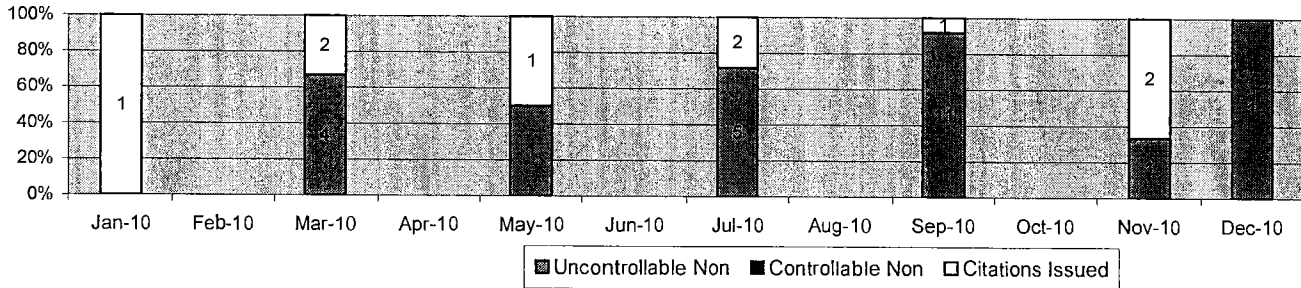
Events	Dec-10		3 Month Average		Year to Date Total		Year to Date Average		2009 Average	
	Quantity	% of Events	Quantity	% of Events	Quantity	% of Events	Quantity	% of Events	Quantity	% of Events
Non Violations	12	86%	47	95%	363	95%	38	95%	35	93%
Violations	2	14%	3	5%	19	5%	2	5%	2	7%
Total Events	14	100%	50	100%	382	100%	40	100%	37	100%
<i>Violations</i>	<i>Quantity</i>	<i>% of Viol</i>	<i>Quantity</i>	<i>% of Viol</i>	<i>Quantity</i>	<i>% of Viol</i>	<i>Quantity</i>	<i>% of Viol</i>	<i>Quantity</i>	<i>% of Viol</i>
Uncont. Non-Issued Viol	2	100%	2	100%	8	42%	1	52%	2	84%
Cont. Non-Issued Viol	0	0%	0	100%	1	5%	0	4%	0	0%
Citations	0	0%	0	13%	10	53%	1	44%	1	28%
Daily Av. Vehicle Counts	7,234		8,817		5,633		5,633		3,403	
Av. Violation Speed	25.5		15.4		24.2		24.2		10.0	
Av. Issued Speed	0.0		18.3		23.4		23.4		13.3	
Av. Violation Sec.	11.9		6.4		9.0		9.0		8.1	
Av. Issued Sec.	0.0		0.8		7.4		7.4		3.4	
Cal. Days/Enforc. Days	31	4	31	21	242	217	30	21	30	16
Daily Citation Yield	0.00	0.00	0.01	0.02	0.04	0.05	0.03	0.04	0.02	0.04
Cit/Viol. Iss. Rate	0%		13%		53%		44%		24%	
Controllable Iss. Rate	0%		100%		91%		92%		100%	
<i>Non-Violations</i>	<i>Quantity</i>	<i>% Non-Viol</i>	<i>Quantity</i>	<i>% Non-Viol</i>	<i>Quantity</i>	<i>% Non-Viol</i>	<i>Quantity</i>	<i>% Non-Viol</i>	<i>Quantity</i>	<i>% Non-Viol</i>
Rear Axle Violation	0	0%	0	0%	0	0%	0	0%	0	0%
Right Turn	5	42%	17	35%	97	27%	11	30%	10	28%
No Violation Occurred	7	58%	30	65%	266	73%	27	70%	25	72%
Total Non Violations	12	100%	47	100%	363	100%	38	100%	35	100%
<i>Uncontrollable Non-Iss</i>	<i>Quantity</i>	<i>% of Un.Non</i>	<i>Quantity</i>	<i>% of Un.Non</i>	<i>Quantity</i>	<i>% of Un.Non</i>	<i>Quantity</i>	<i>% of Un.Non</i>	<i>Quantity</i>	<i>% of Un.Non</i>
No Plate	0	0%	0	0%	0	0%	0	0%	0	5%
Out of State Plate	0	0%	0	0%	0	0%	0	0%	0	0%
Glare on Plate	0	0%	0	0%	0	0%	0	0%	0	0%
Illegible Plate	1	50%	0	0%	0	0%	0	8%	0	0%
Plate Obstructed	0	0%	0	0%	0	0%	0	0%	0	0%
Windshield Glare	0	0%	0	0%	1	13%	0	8%	0	0%
Driver Obstructed	0	0%	0	0%	0	0%	0	0%	0	0%
Car Obstructed	0	0%	0	0%	0	0%	0	0%	0	0%
Emergency Vehicle	1	50%	2	100%	7	88%	1	85%	1	76%
No Vehicle Match Found	0	0%	0	0%	0	0%	0	0%	0	0%
No DMV Match Found	0	0%	0	0%	0	0%	0	0%	0	5%
Police Expired	0	0%	0	0%	0	0%	0	0%	0	14%
Other	0	0%	0	0%	0	0%	0	0%	0	0%
Total	2	100%	2	100%	8	100%	1	100%	2	100%
<i>Controllable Non-Iss</i>	<i>Quantity</i>	<i>% Cont. Non</i>	<i>Quantity</i>	<i>% Cont. Non</i>	<i>Quantity</i>	<i>% Cont. Non</i>	<i>Quantity</i>	<i>% Cont. Non</i>	<i>Quantity</i>	<i>% Cont. Non</i>
Framing of Plate	0	0%	0	0%	0	0%	0	0%	0	0%
Focus / Clarity of Plate	0	0%	0	0%	0	0%	0	0%	0	0%
Dark Interior	0	0%	0	0%	0	0%	0	0%	0	0%
Framing of Driver	0	0%	0	0%	0	0%	0	0%	0	0%
Focus / Clarity of Driver	0	0%	0	0%	1	100%	0	100%	0	0%
Framing of Car	0	0%	0	0%	0	0%	0	0%	0	0%
Data Error	0	0%	0	0%	0	0%	0	0%	0	0%
Exposure	0	0%	0	0%	0	0%	0	0%	0	0%
Equipment Malfunction	0	0%	0	0%	0	0%	0	0%	0	0%
Police Return	0	0%	0	0%	0	0%	0	0%	0	0%
ACS Expired	0	0%	0	0%	0	0%	0	0%	0	0%
Total	0	100%	0	100%	1	100%	0	100%	0	100%



A Xerox Company

Los Angeles County Approach Summary Report

Location 202: SB Hollenbeck Avenue @ Cypress Street



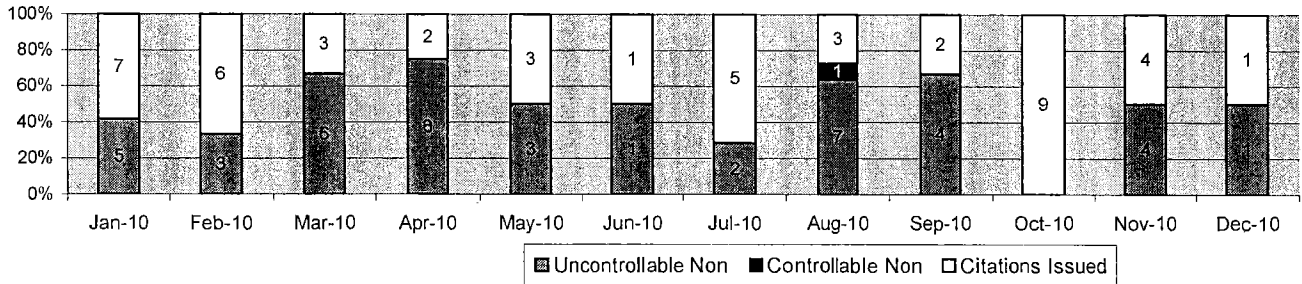
Events	Dec-10		3 Month Average		Year to Date Total		Year to Date Average		2009 Average	
	Quantity	% of Events	Quantity	% of Events	Quantity	% of Events	Quantity	% of Events	Quantity	% of Events
Non Violations	7	88%	13	76%	203	86%	17	86%	21	93%
Violations	1	13%	4	24%	32	14%	3	14%	2	7%
Total Events	8	100%	17	100%	235	100%	20	100%	23	100%
<i>Violations</i>	<i>Quantity</i>	<i>% of Viol</i>	<i>Quantity</i>	<i>% of Viol</i>	<i>Quantity</i>	<i>% of Viol</i>	<i>Quantity</i>	<i>% of Viol</i>	<i>Quantity</i>	<i>% of Viol</i>
Uncont. Non-Issued Viol	1	100%	4	100%	23	72%	2	72%	1	31%
Cont. Non-Issued Viol	0	0%	0	100%	0	0%	0	0%	0	0%
Citations	0	0%	0	8%	9	28%	1	28%	1	25%
Daily Av. Vehicle Counts	7,367		6,283		4,823		4,823		3,137	
Av. Violation Speed	16.0		15.3		19.6		19.6		25.7	
Av. Issued Speed	0.0		13.0		18.8		18.8		21.5	
Av. Violation Sec.	22.2		7.2		8.0		8.0		6.9	
Av. Issued Sec.	0.0		17.6		7.9		7.9		4.2	
Cal. Days/Enforc. Days	31	4	31	10	365	192	30	16	30	16
Daily Citation Yield	0.00	0.00	0.01	0.03	0.02	0.05	0.02	0.05	0.02	0.04
Cit./Viol. Iss. Rate	0%		8%		28%		28%		44%	
Controllable Iss. Rate	0%		100%		100%		100%		100%	
<i>Non-Violations</i>	<i>Quantity</i>	<i>% Non-Viol</i>	<i>Quantity</i>	<i>% Non-Viol</i>	<i>Quantity</i>	<i>% Non-Viol</i>	<i>Quantity</i>	<i>% Non-Viol</i>	<i>Quantity</i>	<i>% Non-Viol</i>
Rear Axle Violation	0	0%	0	0%	0	0%	0	0%	0	0%
Right Turn	3	43%	6	50%	88	43%	7	43%	9	42%
No Violation Occurred	4	57%	6	50%	115	57%	10	57%	12	58%
Total Non Violations	7	100%	13	100%	203	100%	17	100%	21	100%
<i>Uncontrollable Non-Iss</i>	<i>Quantity</i>	<i>% of Un Non</i>	<i>Quantity</i>	<i>% of Un Non</i>	<i>Quantity</i>	<i>% of Un Non</i>	<i>Quantity</i>	<i>% of Un Non</i>	<i>Quantity</i>	<i>% of Un Non</i>
No Plate	0	0%	0	0%	1	4%	0	4%	0	20%
Out of State Plate	0	0%	0	0%	0	0%	0	0%	0	0%
Glare on Plate	0	0%	0	0%	0	0%	0	0%	0	0%
Illegible Plate	0	0%	0	0%	0	0%	0	0%	0	0%
Plate Obstructed	0	0%	0	0%	0	0%	0	0%	0	0%
Windshield Glare	0	0%	0	0%	0	0%	0	0%	0	0%
Driver Obstructed	0	0%	0	0%	0	0%	0	0%	0	10%
Car Obstructed	0	0%	0	0%	0	0%	0	0%	0	0%
Emergency Vehicle	1	100%	3	82%	19	83%	2	83%	0	30%
No Vehicle Match Found	0	0%	0	0%	0	0%	0	0%	0	10%
No DMV Match Found	0	0%	0	9%	1	4%	0	4%	0	20%
Police Expired	0	0%	0	9%	2	9%	0	9%	0	10%
Other	0	0%	0	0%	0	0%	0	0%	0	0%
Total	1	100%	4	100%	23	100%	2	100%	1	100%
<i>Controllable Non-Iss</i>	<i>Quantity</i>	<i>% Cont. Non</i>	<i>Quantity</i>	<i>% Cont. Non</i>	<i>Quantity</i>	<i>% Cont. Non</i>	<i>Quantity</i>	<i>% Cont. Non</i>	<i>Quantity</i>	<i>% Cont. Non</i>
Framing of Plate	0	0%	0	0%	0	0%	0	0%	0	0%
Focus / Clarity of Plate	0	0%	0	0%	0	0%	0	0%	0	0%
Dark Interior	0	0%	0	0%	0	0%	0	0%	0	0%
Framing of Driver	0	0%	0	0%	0	0%	0	0%	0	0%
Focus / Clarity of Driver	0	0%	0	0%	0	0%	0	0%	0	0%
Framing of Car	0	0%	0	0%	0	0%	0	0%	0	0%
Data Error	0	0%	0	0%	0	0%	0	0%	0	0%
Exposure	0	0%	0	0%	0	0%	0	0%	0	0%
Equipment Malfunction	0	0%	0	0%	0	0%	0	0%	0	0%
Police Return	0	0%	0	0%	0	0%	0	0%	0	0%
ACS Expired	0	0%	0	0%	0	0%	0	0%	0	0%
Total	0	100%	0	100%	0	100%	0	100%	0	100%



A xerox Company

Los Angeles County Approach Summary Report

Location 212: SB La Cienega Boulevard @ 120th Street



Events	Dec-10		3 Month Average		Year to Date Total		Year to Date Average		2009 Average	
	Quantity	% of Events	Quantity	% of Events	Quantity	% of Events	Quantity	% of Events	Quantity	% of Events
Non Violations	191	99%	200	96%	1621	95%	202	96%	192	95%
Violations	2	1%	9	4%	88	5%	7	4%	11	5%
Total Events	193	100%	209	100%	1709	100%	210	100%	203	100%
<i>Violations</i>	<i>Quantity</i>	<i>% of Viol</i>	<i>Quantity</i>	<i>% of Viol</i>	<i>Quantity</i>	<i>% of Viol</i>	<i>Quantity</i>	<i>% of Viol</i>	<i>Quantity</i>	<i>% of Viol</i>
Uncont. Non-Issued Viol	1	50%	4	100%	41	47%	4	47%	7	64%
Cont. Non-Issued Viol	0	0%	0	100%	1	1%	0	1%	1	9%
Citations	1	50%	5	54%	46	52%	4	52%	3	27%
Daily Av. Vehicle Counts	3,227		3,252		3,467		3,467		3,492	
Av. Violation Speed	32.5		35.9		36.2		36.2		36.1	
Av. Issued Speed	42.0		47.5		40.9		40.9		46.3	
Av. Violation Sec.	4.8		17.6		21.9		21.9		14.8	
Av. Issued Sec.	0.7		10.5		23.5		23.5		13.3	
Cal. Days/Enforc. Days	31	31	31	31	334	334	30	30	31	31
Daily Citation Yield	0.03	0.03	0.15	0.15	0.14	0.14	0.13	0.13	0.10	0.10
Cit /Viol. Iss. Rate	50%		54%		52%		52%		27%	
Controllable Iss. Rate	100%		93%		98%		98%		75%	
<i>Non-Violations</i>	<i>Quantity</i>	<i>% Non-Viol</i>	<i>Quantity</i>	<i>% Non-Viol</i>	<i>Quantity</i>	<i>% Non-Viol</i>	<i>Quantity</i>	<i>% Non-Viol</i>	<i>Quantity</i>	<i>% Non-Viol</i>
Rear Axle Violation	0	0%	0	0%	0	0%	0	0%	0	0%
Right Turn	78	41%	72	36%	529	33%	70	35%	74	39%
No Violation Occurred	113	59%	128	64%	1092	67%	132	65%	118	61%
Total Non Violations	191	100%	200	100%	1621	100%	202	100%	192	100%
<i>Uncontrollable Non-Iss</i>	<i>Quantity</i>	<i>% of Un.Non</i>	<i>Quantity</i>	<i>% of Un.Non</i>	<i>Quantity</i>	<i>% of Un.Non</i>	<i>Quantity</i>	<i>% of Un.Non</i>	<i>Quantity</i>	<i>% of Un.Non</i>
No Plate	0	0%	0	9%	3	7%	0	7%	1	14%
Out of State Plate	0	0%	0	9%	5	12%	0	12%	0	0%
Glare on Plate	0	0%	0	0%	0	0%	0	0%	0	0%
Illegible Plate	0	0%	0	0%	0	0%	0	0%	0	0%
Plate Obstructed	0	0%	0	0%	0	0%	0	0%	0	0%
Windshield Glare	0	0%	0	0%	0	0%	0	0%	0	0%
Driver Obstructed	0	0%	0	9%	2	5%	0	5%	0	0%
Car Obstructed	0	0%	0	0%	0	0%	0	0%	0	0%
Emergency Vehicle	1	100%	2	55%	21	51%	2	52%	4	57%
No Vehicle Match Found	0	0%	0	0%	1	2%	0	2%	0	0%
No DMV Match Found	0	0%	0	9%	6	15%	1	14%	1	14%
Police Expired	0	0%	0	9%	3	7%	0	7%	1	14%
Other	0	0%	0	0%	0	0%	0	0%	0	0%
Total	1	100%	4	100%	41	100%	4	100%	7	100%
<i>Controllable Non-Iss</i>	<i>Quantity</i>	<i>% Cont. Non</i>	<i>Quantity</i>	<i>% Cont. Non</i>	<i>Quantity</i>	<i>% Cont. Non</i>	<i>Quantity</i>	<i>% Cont. Non</i>	<i>Quantity</i>	<i>% Cont. Non</i>
Framing of Plate	0	0%	0	0%	0	0%	0	0%	0	0%
Focus / Clarity of Plate	0	0%	0	0%	0	0%	0	0%	0	0%
Dark Interior	0	0%	0	0%	0	0%	0	0%	0	0%
Framing of Driver	0	0%	0	0%	0	0%	0	0%	0	0%
Focus / Clarity of Driver	0	0%	0	0%	0	0%	0	0%	0	0%
Framing of Car	0	0%	0	100%	1	100%	0	100%	1	100%
Data Error	0	0%	0	0%	0	0%	0	0%	0	0%
Exposure	0	0%	0	0%	0	0%	0	0%	0	0%
Equipment Malfunction	0	0%	0	0%	0	0%	0	0%	0	0%
Police Return	0	0%	0	0%	0	0%	0	0%	0	0%
ACS Expired	0	0%	0	0%	0	0%	0	0%	0	0%
Total	0	100%	0	100%	1	100%	0	100%	1	100%