



Blue Line Monthly Report



December 2008

expertise in action™



Prepared by: ACS Transportation Solutions
Confidential



Table of Contents

Report Title	Page
<i>Executive Summary</i>	3
<i>Approach Summary Report, All Locations</i>	5
<i>Approach Summary Report, Location 322, WB 20th Street @ Long Beach Boulevard</i>	6
<i>Approach Summary Report, Location 391, EB 41st Street @ Long Beach Boulevard</i>	7
<i>Approach Summary Report, Location 421, EB Vernon Avenue @ Long Beach Boulevard</i>	8
<i>Approach Summary Report, Location 451, EB 48th Place @ Long Beach Boulevard</i>	9
<i>Approach Summary Report, Location 821, EB Century Blvd. @ Grandee Avenue</i>	10
<i>Approach Summary Report, Location 822, WB Century Blvd. @ Grandee Avenue</i>	11
<i>Approach Summary Report, Location 841, EB 103rd Street @ Grandee Avenue</i>	12
<i>Approach Summary Report, Location 981, EB 119th Street @ Willowbrook Boulevard</i>	13
<i>Approach Summary Report, Location 982, WB 119th Street @ Willowbrook Boulevard</i>	14
<i>Approach Summary Report, Location 1051, EB 130th Street @ Willowbrook Boulevard</i>	15
<i>Approach Summary Report, Location 1052, WB 130th Street @ Willowbrook Boulevard</i>	16
<i>Approach Summary Report, Location 1081: EB Stockwell Street @ Willowbrook Boulevard</i>	17
<i>Approach Summary Report, Location 1082: WB Stockwell Street @ Willowbrook Boulevard</i>	18
<i>Approach Summary Report, Location 2003, EB Washington Boulevard @ Los Angeles Street</i>	19
<i>Approach Summary Report, Location 2008, WB Washington Boulevard @ Los Angeles Street</i>	20
<i>Approach Summary Report, Location 2017, EB Washington Boulevard @ San Pedro Street</i>	21
<i>Approach Summary Report, Location 2018, WB Washington Boulevard @ San Pedro Street</i>	22
<i>Approach Summary Report, Location 2027, EB Washington Boulevard @ Broadway Street</i>	23
<i>Approach Summary Report, Location 2036, SB Flower Street @ 18th Street</i>	24
<i>Approach Summary Report, Location 2046, SB Flower Street to EB 10 Freeway On Ramp</i>	25
<i>Approach Summary Report, Location 2054, WB Venice @ Flower</i>	26
<i>Approach Summary Report, Location 2056, SB Venice @ Flower</i>	27
<i>Customer Service Report</i>	28
<i>Daily Citation Yield Report</i>	29
<i>Citations by Time (Graph)</i>	30
<i>Average Red Light Seconds (Graph)</i>	31
<i>Average Speed (Graph)</i>	32
<i>Monthly Citation Yield Report</i>	33
<i>Disposition Summary Report</i>	34
<i>Performance Report</i>	35



Executive Summary

ACS is pleased to present the monthly report for the Los Angeles County Metropolitan Transportation Authority's Photo Enforcement Services, specific to the Blue Line dedicated light rail route.

In December 2008, the photo enforcement project for the MTA Blue Line captured a total of 4,295 events. Of these, 743 were recorded as violations and 4,552 were non-violations. A total number of 352 citations have been issued reflecting an issuance rate of 47% and a prosecutable issuance rate of 86%. Citations issued for the month were well above the 3 month average of 308 while the issuance and prosecutable issuance rates were also considerably higher than the 3 month average (47% vs 41% and 77% vs 86% respectively). December saw the second highest total number of citations issued for the year (only 5 shy of February's total of 357).

We are continuing to collect data on the lens hood tests. Results are promising, but it is probable that we won't see noticeable changes until spring and the start of the warmer seasons, when we have the most issues with glare.

In the News - Photo Enforcement Around the Country

FCC Conspires To Protect Ticket Camera Corporation

December 31st, 2008

By James Baxter, NMA President

www.motorists.org

The Federal Communications Commission, in the dying days of the Republican administration, has added yet another reason to clear the decks in Washington, D.C. and start all over with a new cast of characters.

In a duplicitous, yet obvious, regulatory maneuver the FCC Enforcement Division has concocted a "Consent Decree" to protect the financial interests of the Redflex Corporation, a major supplier of ticket camera systems, and the governments that have exploited these systems to extort millions of dollars from the driving public. What follows is taken directly from the FCC Consent Decree, along with a little background and explanation.

Redflex has been using radar devices that have never been certified/approved by the Federal Communications Commission, as is required by federal law. A competitor of Redflex blew the whistle on this "oversight" (not exactly a collegial industry) and the FCC was, apparently reluctantly, forced to give the impression of enforcing its own regulations. The result of this enforcement action is a Consent Decree that FCC operatives and Redflex executives concocted, and surely assumed no one would ever read. However, it should be read by a large audience, just to understand how far astray an ethically challenged government agency can go.

There was no question that Redflex was using radar speed measuring devices that had not been certified by the FCC. There was also no question that Redflex was clearly in violation of FCC regulations. That's where the clarity fades away.

Instead of declaring Redflex in violation of federal regulations, assessing a penalty for the violation, and obtaining assurances from Redflex that it would forthwith comply with these regulations, the FCC dismissed the complaint! In exchange Redflex was required to make a "voluntary contribution" of \$22,000.00 to the US Treasury and to come into compliance with FCC regulations. Why all this double speak? Why dismiss the complaint when the violation was obvious? And why call a monetary fine a "voluntary contribution?" The answer is contained in the Consent Decree "Final Settlement."

The Final Settlement states—"The parties (Redflex and the FCC) further agree that this Consent Decree does not constitute either an adjudication on the merits or a factual or legal finding or determination regarding any compliance or noncompliance with the requirements of the Act or the Commission's Rules and Orders." This is Redflex's salvation. (In other words there was no declaration of guilt or innocence.)

If the FCC would have carried out its legitimate responsibilities, charged Redflex with violating federal regulations, regarding certification of radar speed measuring devices, and penalized Redflex accordingly, Redflex would have been competitively disadvantaged in seeking future state and local contracts.

Less obvious, but potentially more devastating, Redflex, and the governments contracting with Redflex, would quite likely be on the hook for hundreds of millions of dollars, certainly years worth of litigation. Why? It's against the law to break the law to enforce the law. Redflex has been using illegal radar guns to enforce traffic laws and to support the issuance of traffic tickets. A very plausible legal argument could be made that any ticket issued that was generated by an illegal radar gun should be dismissed and the fine refunded to the victim.

However, as loopy and disingenuous as it seems, the FCC deliberately avoided prosecution and thereby avoided an official declaration that the Redflex radar guns were illegal and should not have been used for enforcement purposes.

A moderately astute judge, one without a vested interest in past ticket camera revenues, would see through this rouse in a heartbeat. Redflex was in violation of the FCC regulation and the FCC knew it. The voluntary contribution was really just a fine. And the Consent Decree is just a house of cards constructed to protect Redflex, and its client governments. This is reminiscent of the regulatory mindset so recently prevalent in the financial industry.

Red light firm may owe Denver some green Contract clause offers credits for missed violations

By Kevin Flynn, Rocky Mountain News (www.rockymountainnews.com)

Published January 16, 2009 at 12:05 a.m.

Redflex, the company that runs Denver's red light ticket cameras, may owe the city at least \$27,900 under a disputed contract clause giving Denver a \$25 credit every time it misses a certain number of red-light runners.

The city is looking to renegotiate parts of the contract, which expires Feb. 15 and can be renewed for up to four more years without being rebid.

Denver pays Redflex of Scottsdale, Ariz., \$31,920 a month to run the system and, in return, the city's monthly ticket revenue has gone from \$6,230 in August to \$173,295 in November.

The contract had been loosely enforced until recently, when a Rocky Mountain News open records request revealed that Redflex hadn't been submitting the reports required under the contract. The Denver police did not ask for the reports until the Rocky asked for copies.

Division Chief David Quinones then demanded the information. The company delivered the documents Jan. 5 and met early this week with Quinones, Assistant City Attorney Deanne Durfee and others.

Quinones, Durfee and Redflex officials have failed to respond to repeated requests by the Rocky for comment.

Monthly tabulations

Among the items now turned in are monthly tabulations showing Redflex's system failed to achieve a minimum 98 percent "capture rate" of total red light runners. The city gets a \$25 credit for each failure below 98 percent, but no one has kept track of it until now.

A successfully "captured" incident is one in which the cameras produce clear photos and video with the driver's face and the vehicle plate clearly identifiable. Redflex and Denver police routinely toss out citations that don't meet these standards, such as an obstructed plate, sun glare or where the driver's face is hidden. These don't count as failures.

But faults such as camera positioning, unsynchronized flash units, blurry images and the like do count against the credit.

According to Redflex data submitted on Monday to the police department, the system fell below the 98 percent mark every month of operation - as low as 83 percent in August.

Redflex disputes credits

However, Redflex disputes that the contract calls for the \$25 credits. In her cover letter to Quinones last week, Jennifer Dwiggins, Redflex's operations vice president, maintained the \$25 credit for insufficient "capture rate" was tied to hours of system down-time, which has been only a tenth of a percent below 100 percent.

That claim is contradicted in the contract language, which reads: "The city shall receive a credit of \$25 per each violation detected but not captured below the capture rate. By way of example if in one month there are 970 captured violations and 1,000 detected violations, the city would receive a credit of \$250 (10 x \$25) for that month."

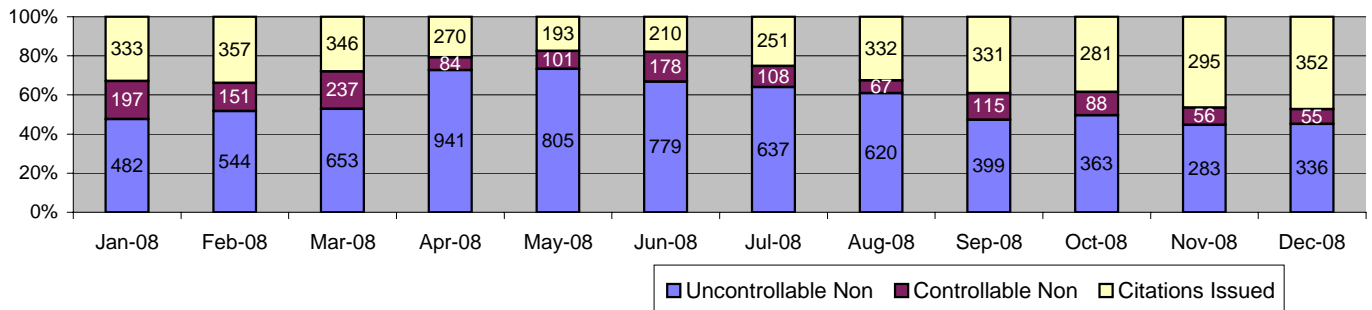
In total since June, there have been 1,116 such failed captures below the threshold, while 14,415 tickets have been mailed out through Dec. 29. Denver has until Feb. 5 to decide whether it will continue the one-year pilot program.

flynnk@RockyMountainNews.com or 303-954-5247



expertise in action™

Los Angeles County MTA Blue Line Approach Summary Report All Locations



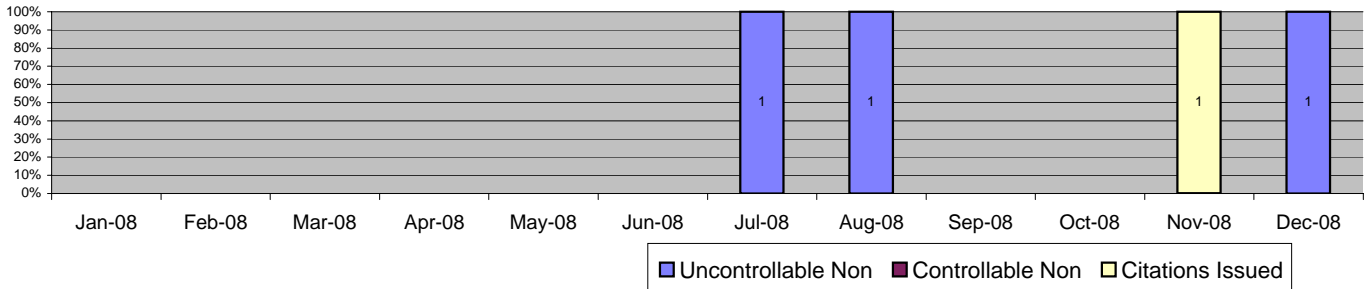
Events	Dec-08		3 Month Average		Year to Date Total		Year to Date Average		2007 Average	
	Quantity	% of Events	Quantity	% of Events	Quantity	% of Events	Quantity	% of Events	Quantity	% of Events
Non Violations	4552	85.97%	4,274	85.03%	57,450	82.92%	4,807	82.79%	4,005	78.29%
Violations	743	14.03%	752	14.97%	11,832	17.08%	999	17.21%	1,111	21.71%
Total Events	5295	100.00%	5,026	100.00%	69,282	100.00%	5,807	100.00%	5,116	100.00%
Violations										
	Quantity	% of Viol	Quantity	% of Viol	Quantity	% of Viol	Quantity	% of Viol	Quantity	% of Viol
Uncont. Non-Issued Viol	336	45.22%	353	46.92%	6,844	57.84%	575	57.58%	429	38.59%
Cont. Non-Issued Viol	55	7.40%	91	12.10%	1,437	12.15%	122	12.23%	359	32.32%
Citations	352	47.38%	308	40.98%	3,551	30.01%	302	30.19%	323	29.10%
Av. Violation Speed	17.20		16.82		16.84		16.81		14.38	
Av. Issued Speed	17.55		17.15		17.22		17.15		12.87	
Av. Violation Seconds	14.24		18.60		15.22		15.18		17.86	
Av. Issued Seconds	9.58		11.11		9.11		9.07		14.23	
Cal. Days/Enforc. Days	31	28	30	30	359	326	31	30	30	27
Daily Citation Yield	11.35	12.45	10.14	10.26	9.88	10.01	9.88	10.01	10.69	12.05
Cit /Viol. Iss. Rate	47%		41%		30%		30%		29%	
Prosecut. Iss. Rate	86%		77%		71%		71%		47%	
Non - Violations										
	Quantity	% of Events	Quantity	% of Events	Quantity	% of Events	Quantity	% of Events	Quantity	% of Events
Rear Axle Violation	6	0.11%	6	0.11%	91	0.13%	8	0.13%	4	0.09%
Gate Down - No Train	0	0.00%	0	0.00%	0	0.00%	0	0.00%	0	0.01%
Train Activation	60	1.13%	66	1.32%	1,728	2.49%	148	2.55%	25	0.49%
Right Turn	0	0.00%	0	0.00%	2	0.00%	0	0.00%	0	0.00%
No Violation Occurred	4486	84.72%	4,202	83.60%	55,629	80.29%	4,652	80.11%	3,975	77.70%
Total Non Violations	4552	85.97%	4,274	85.03%	57,450	82.92%	4,807	82.79%	4,274	83.54%
Non - Issued										
	Quantity	% of Viol	Quantity	% of Viol	Quantity	% of Viol	Quantity	% of Viol	Quantity	% of Viol
No Plate	73	9.83%	79	10.50%	1,253	10.59%	106	10.57%	107	9.64%
Out of State Plate	13	1.75%	9	1.15%	130	1.10%	11	1.08%	11	0.95%
Glare on Plate	1	0.13%	3	0.44%	18	0.15%	2	0.15%	5	0.41%
Illegible Plate	1	0.13%	2	0.27%	33	0.28%	3	0.28%	6	0.54%
Plate Obstructed	26	3.50%	23	3.01%	360	3.04%	30	3.02%	34	3.02%
Windshield Glare	28	3.77%	56	7.40%	1,392	11.76%	117	11.72%	35	3.19%
Driver Obstructed	28	3.77%	22	2.88%	417	3.52%	35	3.48%	12	1.04%
Car Obstructed	73	9.83%	58	7.75%	1,134	9.58%	95	9.48%	61	5.51%
Emergency Vehicle	23	3.10%	27	3.54%	308	2.60%	26	2.59%	14	1.29%
No DMV Match Found	70	9.42%	69	9.17%	1,011	8.54%	86	8.65%	122	10.99%
LASD Expired	0	0.00%	0	0.00%	538	4.55%	45	4.49%	20	1.83%
Other	0	0.00%	6	0.80%	250	2.11%	21	2.09%	2	0.17%
Total	336	45.22%	353	46.92%	6,844	57.84%	575	57.59%	429	38.59%
Framing of Plate	18	2.42%	16	2.17%	213	1.80%	18	1.78%	14	1.22%
Focus / Clarity of Plate	2	0.27%	8	1.02%	149	1.26%	13	1.26%	51	4.60%
Dark Interior	7	0.94%	10	1.28%	218	1.84%	18	1.82%	8	0.71%
Framing of Driver	8	1.08%	7	0.97%	96	0.81%	10	0.99%	3	0.28%
Focus / Clarity of Driver	0	0.00%	1	0.13%	13	0.11%	1	0.11%	4	0.39%
Framing of Car	20	2.69%	20	2.61%	251	2.12%	21	2.11%	26	2.34%
Data Error	0	0.00%	0	0.04%	27	0.23%	2	0.23%	1	0.08%
Exposure	0	0.00%	2	0.31%	64	0.54%	5	0.53%	11	1.02%
Equipment Malfunction	0	0.00%	26	3.41%	389	3.29%	33	3.26%	94	8.43%
LASD Return	0	0.00%	0	0.04%	11	0.09%	1	0.09%	58	5.20%
ACS Expired	0	0.00%	1	0.09%	6	0.05%	1	0.05%	90	8.06%
Total	55	7.40%	91	12.10%	1,437	12.15%	122	12.23%	359	32.32%



expertise in action™

Los Angeles County MTA Blue Line Approach Summary Report

Location 322: WB 20th St. @ Long Beach Blvd



Events	Dec-08		3 Month Average		Year to Date Total		Year to Date Average		2007 Average	
	Quantity	% of Events	Quantity	% of Events	Quantity	% of Events	Quantity	% of Events	Quantity	% of Events
Non Violations	1	50.00%	38	0.00%	114	96.61%	29	96.61%	1	30.77%
Violations	1	50.00%	1	0.00%	4	3.39%	1	3.39%	2	69.23%
Total Events	2	100.00%	39	0.00%	118	100.00%	30	100.00%	3	100.00%
<i>Violations</i>	<i>Quantity</i>	<i>% of Viol</i>	<i>Quantity</i>	<i>% of Viol</i>	<i>Quantity</i>	<i>% of Viol</i>	<i>Quantity</i>	<i>% of Viol</i>	<i>Quantity</i>	<i>% of Viol</i>
Uncont. Non-Issued Viol	1	100.00%	1	66.67%	3	75.00%	1	75.00%	0	11.11%
Cont. Non-Issued Viol	0	0.00%	0	0.00%	0	0.00%	0	0.00%	1	44.44%
Citations	0	0.00%	0	33.33%	1	25.00%	0	25.00%	1	44.44%
Av. Violation Speed	11.00		6.67		7.75		7.75		15.40	
Av. Issued Speed	0.00		3.33		2.50		2.50		12.40	
Av. Violation Sec.	15.40		15.37		15.38		15.38		62.21	
Av. Issued Sec.	0.00		2.47		1.85		1.85		42.64	

Cal. Days/Enforc. Days	31	31	31	31	366	131	31	31	31	27
Daily Citation Yield	0.00	0.00	0.01	0.00	0.00	0.01	0.01	0.01	0.03	0.03
Cit /Viol. Iss. Rate		0%		0%		25%		25%		44%
Prosecut. Iss. Rate		0%		0%		0%		0%		50%

Non - Violations	Dec-08		3 Month Average		Year to Date Total		Year to Date Average		Jan-08	
	Quantity	% of Events	Quantity	% of Events	Quantity	% of Events	Quantity	% of Events	Quantity	% of Events
Rear Axle Violation	0	0.00%	0	0.00%	0	0.00%	0	0.00%	0	15.38%
Gate Down - No Train	0	0.00%	0	0.00%	0	0.00%	0	0.00%	0	0.00%
Train Activation	0	0.00%	8	19.83%	23	19.49%	6	19.49%	0	0.00%
Right Turn	0	0.00%	0	0.00%	0	0.00%	0	0.00%	0	0.00%
No Violation Occurred	1	50.00%	30	77.59%	91	77.12%	23	77.12%	0	15.38%
Total Non Violations	1	50.00%	38	97.41%	114	96.61%	29	96.61%	1	30.77%

Non - Issued	Quantity	% of Viol	Quantity	% of Viol	Quantity	% of Viol	Quantity	% of Viol	Quantity	% of Viol
No Plate	0	0.00%	0	0.00%	0	0.00%	0	0.00%	0	11.11%
Out of State Plate	0	0.00%	0	0.00%	0	0.00%	0	0.00%	0	0.00%
Glare on Plate	0	0.00%	0	0.00%	0	0.00%	0	0.00%	0	0.00%
Illegible Plate	0	0.00%	0	0.00%	0	0.00%	0	0.00%	0	0.00%
Plate Obstructed	1	100.00%	0	0.00%	1	25.00%	0	25.00%	0	0.00%
Windshield Glare	0	0.00%	0	33.33%	1	25.00%	0	25.00%	0	0.00%
Driver Obstructed	0	0.00%	0	0.00%	0	0.00%	0	0.00%	0	0.00%
Car Obstructed	0	0.00%	0	33.33%	1	25.00%	0	25.00%	0	0.00%
Emergency Vehicle	0	0.00%	0	0.00%	0	0.00%	0	0.00%	0	0.00%
No DMV Match Found	0	0.00%	0	0.00%	0	0.00%	0	0.00%	0	0.00%
LASD Expired	0	0.00%	0	0.00%	0	0.00%	0	0.00%	0	0.00%
Other	0	0.00%	0	0.00%	0	0.00%	0	0.00%	0	0.00%
Total	1	100.00%	1	66.67%	3	75.00%	1	75.00%	0	11.11%

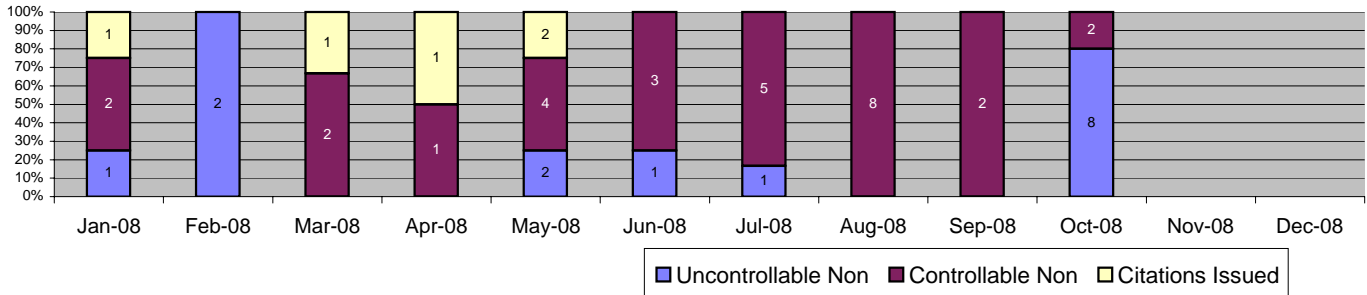
Framing of Plate	0	0.00%	0	0.00%	0	0.00%	0	0.00%	0	0.00%
Focus / Clarity of Plate	0	0.00%	0	0.00%	0	0.00%	0	0.00%	0	0.00%
Dark Interior	0	0.00%	0	0.00%	0	0.00%	0	0.00%	0	0.00%
Framing of Driver	0	0.00%	0	0.00%	0	0.00%	0	0.00%	0	0.00%
Focus / Clarity of Driver	0	0.00%	0	0.00%	0	0.00%	0	0.00%	0	0.00%
Framing of Car	0	0.00%	0	0.00%	0	0.00%	0	0.00%	0	11.11%
Data Error	0	0.00%	0	0.00%	0	0.00%	0	0.00%	0	0.00%
Exposure	0	0.00%	0	0.00%	0	0.00%	0	0.00%	0	0.00%
Equipment Malfunction	0	0.00%	0	0.00%	0	0.00%	0	0.00%	0	0.00%
LASD Return	0	0.00%	0	0.00%	0	0.00%	0	0.00%	0	11.11%
ACS Expired	0	0.00%	0	0.00%	0	0.00%	0	0.00%	0	22.22%
Total	0	0.00%	0	0.00%	0	0.00%	0	0.00%	1	44.44%



expertise in action™

Los Angeles County MTA Blue Line Approach Summary Report

Location 391: EB 41st Street @ Long Beach Boulevard



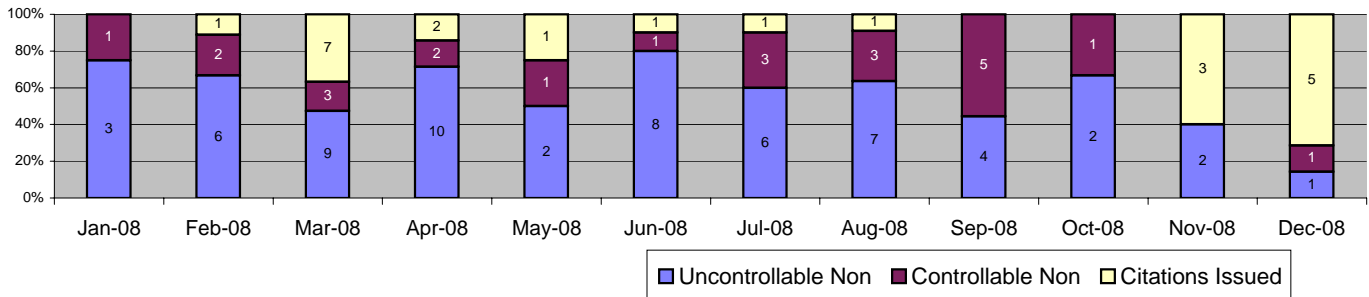
Events	Dec-08		3 Month Average		Year to Date Total		Year to Date Average		2007 Average	
	Quantity	% of Events	Quantity	% of Events	Quantity	% of Events	Quantity	% of Events	Quantity	% of Events
Non Violations	0	0.00%	1	16.67%	16	24.62%	2	24.62%	5	65.52%
Violations	0	0.00%	7	83.33%	49	75.38%	5	75.38%	3	34.48%
Total Events	0	0.00%	8	100.00%	65	100.00%	7	100.00%	7	100.00%
<i>Violations</i>	<i>Quantity</i>	<i>% of Viol</i>	<i>Quantity</i>	<i>% of Viol</i>	<i>Quantity</i>	<i>% of Viol</i>	<i>Quantity</i>	<i>% of Viol</i>	<i>Quantity</i>	<i>% of Viol</i>
Uncont. Non-Issued Viol	0	0.00%	3	40.00%	15	30.61%	2	30.61%	0	15.00%
Cont. Non-Issued Viol	0	0.00%	4	60.00%	29	59.18%	3	59.18%	2	80.00%
Citations	0	0.00%	0	0.00%	5	10.20%	1	10.20%	0	5.00%
Av. Violation Speed	0.00		9.21		10.52		10.52		16.33	
Av. Issued Speed	0.00		0.00		5.80		5.80		1.88	
Av. Violation Sec.	0.00		73.71		66.66		66.66		19.06	
Av. Issued Sec.	0.00		0.00		21.85		21.85		0.93	
Cal. Days/Enforc. Days	31	0	31	31	366	305	31	31	30	26
Daily Citation Yield	0.00	0.00	0.00	0.00	0.01	0.02	0.02	0.02	0.00	0.00
Cit /Viol. Iss. Rate		0%		0%		10%		10%		5%
Prosecut. Iss. Rate		0%		0%		15%		15%		6%
<i>Non - Violations</i>	Dec-08		3 Month Average		Year to Date Total		Year to Date Average		2007 Average	
	<i>Quantity</i>	<i>% of Events</i>	<i>Quantity</i>	<i>% of Events</i>	<i>Quantity</i>	<i>% of Events</i>	<i>Quantity</i>	<i>% of Events</i>	<i>Quantity</i>	<i>% of Events</i>
Rear Axle Violation	0	0.00%	0	0.00%	0	0.00%	0	0.00%	0	5.17%
Gate Down - No Train	0	0.00%	0	0.00%	0	0.00%	0	0.00%	0	0.00%
Train Activation	0	0.00%	0	0.00%	0	0.00%	0	0.00%	0	1.72%
Right Turn	0	0.00%	0	0.00%	0	0.00%	0	0.00%	0	0.00%
No Violation Occurred	0	0.00%	1	13.04%	16	24.62%	2	24.62%	4	58.62%
Total Non Violations	0	0.00%	1	13.04%	16	24.62%	2	24.62%	5	65.52%
<i>Non - Issued</i>	<i>Quantity</i>	<i>% of Viol</i>	<i>Quantity</i>	<i>% of Viol</i>	<i>Quantity</i>	<i>% of Viol</i>	<i>Quantity</i>	<i>% of Viol</i>	<i>Quantity</i>	<i>% of Viol</i>
No Plate	0	0.00%	0	5.00%	2	4.08%	0	4.08%	0	10.00%
Out of State Plate	0	0.00%	0	0.00%	0	0.00%	0	0.00%	0	0.00%
Glare on Plate	0	0.00%	0	0.00%	2	4.08%	0	4.08%	0	0.00%
Illegible Plate	0	0.00%	0	0.00%	0	0.00%	0	0.00%	0	0.00%
Plate Obstructed	0	0.00%	0	0.00%	0	0.00%	0	0.00%	0	0.00%
Windshield Glare	0	0.00%	0	0.00%	1	2.04%	0	2.04%	0	0.00%
Driver Obstructed	0	0.00%	0	0.00%	0	0.00%	0	0.00%	0	0.00%
Car Obstructed	0	0.00%	1	15.00%	5	10.20%	1	10.20%	0	0.00%
Emergency Vehicle	0	0.00%	0	0.00%	0	0.00%	0	0.00%	0	0.00%
No DMV Match Found	0	0.00%	0	0.00%	1	2.04%	0	2.04%	0	5.00%
LASD Expired	0	0.00%	0	0.00%	0	0.00%	0	0.00%	0	0.00%
Other	0	0.00%	1	20.00%	4	8.16%	0	8.16%	0	0.00%
Total	0	0.00%	3	40.00%	15	30.61%	2	30.61%	0	15.00%
Framing of Plate	0	0.00%	0	5.00%	2	4.08%	0	4.08%	0	0.00%
Focus / Clarity of Plate	0	0.00%	0	5.00%	6	12.24%	1	12.24%	2	60.00%
Dark Interior	0	0.00%	0	0.00%	0	0.00%	0	0.00%	0	0.00%
Framing of Driver	0	0.00%	0	0.00%	1	2.04%	0	2.04%	0	0.00%
Focus / Clarity of Driver	0	0.00%	0	0.00%	0	0.00%	0	0.00%	0	0.00%
Framing of Car	0	0.00%	1	15.00%	9	18.37%	1	18.37%	0	5.00%
Data Error	0	0.00%	0	0.00%	0	0.00%	0	0.00%	0	0.00%
Exposure	0	0.00%	0	0.00%	0	0.00%	0	0.00%	0	5.00%
Equipment Malfunction	0	0.00%	2	35.00%	11	22.45%	1	22.45%	0	10.00%
LASD Return	0	0.00%	0	0.00%	0	0.00%	0	0.00%	0	0.00%
ACS Expired	0	0.00%	0	0.00%	0	0.00%	0	0.00%	0	0.00%
Total	0	0.00%	4	60.00%	29	59.18%	3	59.18%	2	80.00%



expertise in action™

Los Angeles County MTA Blue Line Approach Summary Report

Location 421: EB Vernon Avenue @ Long Beach Boulevard



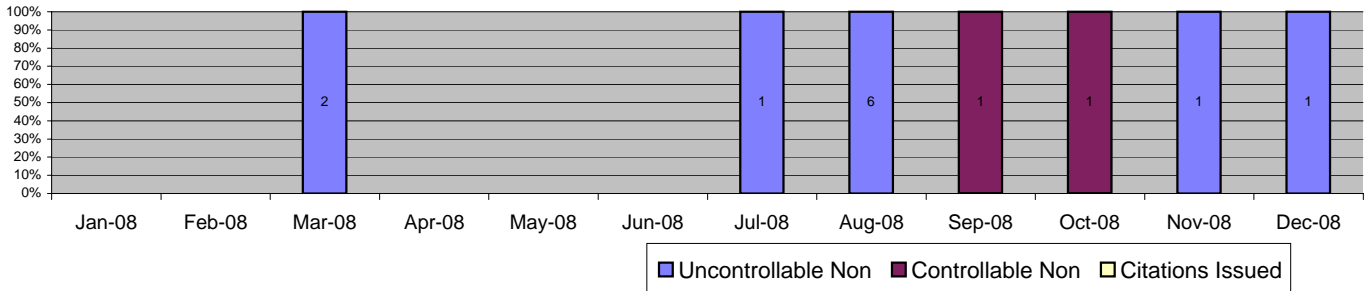
Events	Dec-08		3 Month Average		Year to Date Total		Year to Date Average		2007 Average	
	Quantity	% of Events	Quantity	% of Events	Quantity	% of Events	Quantity	% of Events	Quantity	% of Events
Non Violations	3	30.00%	2	21.47%	31	22.79%	3	22.79%	3	13.79%
Violations	7	70.00%	6	78.53%	105	77.21%	9	77.21%	19	86.21%
Total Events	10	100.00%	7	100.00%	136	100.00%	11	100.00%	22	100.00%
<i>Violations</i>	<i>Quantity</i>	<i>% of Viol</i>	<i>Quantity</i>	<i>% of Viol</i>	<i>Quantity</i>	<i>% of Viol</i>	<i>Quantity</i>	<i>% of Viol</i>	<i>Quantity</i>	<i>% of Viol</i>
Uncont. Non-Issued Viol	1	14.29%	3	47.06%	60	57.14%	5	57.14%	9	47.11%
Cont. Non-Issued Viol	1	14.29%	2	35.29%	23	21.90%	2	21.90%	5	24.89%
Citations	5	71.43%	1	17.65%	22	20.95%	2	20.95%	5	28.00%
Av. Violation Speed	12.43		11.96		12.29		12.29		14.10	
Av. Issued Speed	14.60		6.00		11.40		11.40		11.75	
Av. Violation Sec.	20.23		19.43		18.32		18.32		19.10	
Av. Issued Sec.	25.30		2.06		22.88		22.88		24.38	
Cal. Days/Enforc. Days	31	31	30	30	366	366	31	31	30	30
Daily Citation Yield	0.16	0.16	0.03	0.03	0.06	0.06	0.06	0.06	0.17	0.17
Cit /Viol. Iss. Rate		0%		18%		21%		21%		28%
Prosecut. Iss. Rate		0%		33%		49%		49%		53%
<i>Non - Violations</i>	<i>Quantity</i>	<i>% of Events</i>	<i>Quantity</i>	<i>% of Events</i>	<i>Quantity</i>	<i>% of Events</i>	<i>Quantity</i>	<i>% of Events</i>	<i>Quantity</i>	<i>% of Events</i>
Rear Axle Violation	2	20.00%	0	4.55%	8	5.88%	1	5.88%	0	1.15%
Gate Down - No Train	0	0.00%	0	0.00%	0	0.00%	0	0.00%	0	0.00%
Train Activation	0	0.00%	0	0.00%	0	0.00%	0	0.00%	0	0.00%
Right Turn	0	0.00%	0	0.00%	0	0.00%	0	0.00%	0	0.00%
No Violation Occurred	1	10.00%	1	18.18%	23	16.91%	2	16.91%	3	12.64%
Total Non Violations	3	30.00%	2	22.73%	31	22.79%	3	22.79%	3	13.79%
<i>Non - Issued</i>	<i>Quantity</i>	<i>% of Viol</i>	<i>Quantity</i>	<i>% of Viol</i>	<i>Quantity</i>	<i>% of Viol</i>	<i>Quantity</i>	<i>% of Viol</i>	<i>Quantity</i>	<i>% of Viol</i>
No Plate	0	0.00%	0	0.00%	5	4.76%	0	4.76%	1	7.56%
Out of State Plate	0	0.00%	0	0.00%	1	0.95%	0	0.95%	0	0.44%
Glare on Plate	0	0.00%	0	5.88%	2	1.90%	0	1.90%	0	0.00%
Illegible Plate	0	0.00%	0	0.00%	0	0.00%	0	0.00%	0	0.44%
Plate Obstructed	0	0.00%	0	5.88%	7	6.67%	1	6.67%	1	3.56%
Windshield Glare	0	0.00%	1	17.65%	14	13.33%	1	13.33%	0	0.89%
Driver Obstructed	0	0.00%	0	0.00%	3	2.86%	0	2.86%	0	0.44%
Car Obstructed	0	0.00%	1	11.76%	9	8.57%	1	8.57%	2	8.00%
Emergency Vehicle	0	0.00%	0	0.00%	1	0.95%	0	0.95%	0	0.89%
No DMV Match Found	1	14.29%	0	5.88%	14	13.33%	1	13.33%	5	24.89%
LASD Expired	0	0.00%	0	0.00%	4	3.81%	0	3.81%	0	0.00%
Other	0	0.00%	0	0.00%	0	0.00%	0	0.00%	0	0.00%
Total	1	14.29%	3	47.06%	60	57.14%	5	57.14%	9	47.11%
Framing of Plate	0	0.00%	0	0.00%	7	6.67%	1	6.67%	0	0.89%
Focus / Clarity of Plate	0	0.00%	2	29.41%	9	8.57%	1	8.57%	1	3.11%
Dark Interior	0	0.00%	0	0.00%	0	0.00%	0	0.00%	0	0.00%
Framing of Driver	0	0.00%	0	0.00%	1	0.95%	0	0.95%	0	0.00%
Focus / Clarity of Driver	0	0.00%	0	0.00%	0	0.00%	0	0.00%	0	0.89%
Framing of Car	1	14.29%	0	5.88%	5	4.76%	0	4.76%	1	5.78%
Data Error	0	0.00%	0	0.00%	0	0.00%	0	0.00%	0	0.00%
Exposure	0	0.00%	0	0.00%	0	0.00%	0	0.00%	0	0.44%
Equipment Malfunction	0	0.00%	0	0.00%	1	0.95%	0	0.95%	0	2.22%
LASD Return	0	0.00%	0	0.00%	0	0.00%	0	0.00%	1	3.56%
ACS Expired	0	0.00%	0	0.00%	0	0.00%	0	0.00%	2	8.00%
Total	1	14.29%	2	35.29%	23	21.90%	2	21.90%	5	24.89%



expertise in action™

Los Angeles County MTA Blue Line Approach Summary Report

Location 451: EB 48th Place @ Long Beach Blvd



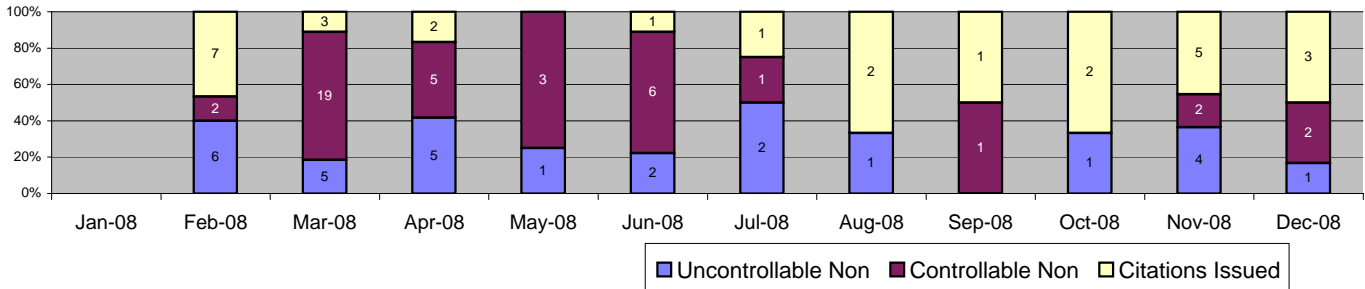
Events	Dec-08		3 Month Average		Year to Date Total		Year to Date Average		2007 Average	
	Quantity	% of Events	Quantity	% of Events	Quantity	% of Events	Quantity	% of Events	Quantity	% of Events
Non Violations	1	50.00%	0	11.11%	12	48.00%	2	48.00%	0	0.00%
Violations	1	50.00%	1	22.22%	13	52.00%	2	52.00%	0	0.00%
Total Events	2	100.00%	1	33.33%	25	100.00%	4	100.00%	0	0.00%
Violations	Quantity	% of Viol	Quantity	% of Viol	Quantity	% of Viol	Quantity	% of Viol	Quantity	% of Viol
Uncont. Non-Issued Viol	1	100.00%	0	33.33%	11	84.62%	2	88.46%	0	0.00%
Cont. Non-Issued Viol	0	0.00%	1	66.67%	2	15.38%	0	15.38%	0	0.00%
Citations	0	0.00%	0	0.00%	0	0.00%	0	0.00%	0	0.00%
Av. Violation Speed	15.00		11.67		12.21		12.21		0.00	
Av. Issued Speed	0.00		0.00		0.00		0.00		0.00	
Av. Violation Sec.	6.00		37.13		30.80		30.80		0.00	
Av. Issued Sec.	0.00		0.00		0.00		0.00		0.00	
Cal. Days/Enforc. Days	31	31	30	30	215	199	31	28	31	0
Daily Citation Yield	0.00	0.00	0.00	0.00	0.00	0.00	0.00	0.00	0.00	0.00
Cit /Viol. Iss. Rate		0%		0%		0%		0%		0%
Prosecut. Iss. Rate		0%		0%		0%		0%		0%
Non - Violations	Dec-08		3 Month Average		Year to Date Total		Year to Date Average		Jan-08	
	Quantity	% of Events	Quantity	% of Events	Quantity	% of Events	Quantity	% of Events	Quantity	% of Events
Rear Axle Violation	0	0.00%	0	0.00%	0	0.00%	0	0.00%	0	0.00%
Gate Down - No Train	0	0.00%	0	0.00%	0	0.00%	0	0.00%	0	0.00%
Train Activation	0	0.00%	0	0.00%	0	0.00%	0	0.00%	0	0.00%
Right Turn	0	0.00%	0	0.00%	0	0.00%	0	0.00%	0	0.00%
No Violation Occurred	1	50.00%	0	25.00%	12	48.00%	2	48.00%	0	0.00%
Total Non Violations	1	50.00%	0	25.00%	12	48.00%	2	48.00%	0	0.00%
Non - Issued	Quantity	% of Viol	Quantity	% of Viol	Quantity	% of Viol	Quantity	% of Viol	Quantity	% of Viol
No Plate	0	0.00%	0	0.00%	3	23.08%	1	26.92%	0	0.00%
Out of State Plate	0	0.00%	0	0.00%	0	0.00%	0	0.00%	0	0.00%
Glare on Plate	0	0.00%	0	0.00%	0	0.00%	0	0.00%	0	0.00%
Illegible Plate	0	0.00%	0	0.00%	0	0.00%	0	0.00%	0	0.00%
Plate Obstructed	0	0.00%	0	0.00%	0	0.00%	0	0.00%	0	0.00%
Windshield Glare	0	0.00%	0	0.00%	0	0.00%	0	0.00%	0	0.00%
Driver Obstructed	0	0.00%	0	0.00%	0	0.00%	0	0.00%	0	0.00%
Car Obstructed	0	0.00%	0	0.00%	0	0.00%	0	0.00%	0	0.00%
Emergency Vehicle	0	0.00%	0	0.00%	3	23.08%	0	23.08%	0	0.00%
No DMV Match Found	1	100.00%	0	33.33%	5	38.46%	1	38.46%	0	0.00%
LASD Expired	0	0.00%	0	0.00%	0	0.00%	0	0.00%	0	0.00%
Other	0	0.00%	0	0.00%	0	0.00%	0	0.00%	0	0.00%
Total	1	100.00%	0	33.33%	11	84.62%	2	88.46%	0	0.00%
Framing of Plate	0	0.00%	0	0.00%	0	0.00%	0	0.00%	0	0.00%
Focus / Clarity of Plate	0	0.00%	0	33.33%	1	7.69%	0	7.69%	0	0.00%
Dark Interior	0	0.00%	0	0.00%	0	0.00%	0	0.00%	0	0.00%
Framing of Driver	0	0.00%	0	0.00%	0	0.00%	0	0.00%	0	0.00%
Focus / Clarity of Driver	0	0.00%	0	0.00%	0	0.00%	0	0.00%	0	0.00%
Framing of Car	0	0.00%	0	33.33%	1	7.69%	0	7.69%	0	0.00%
Data Error	0	0.00%	0	0.00%	0	0.00%	0	0.00%	0	0.00%
Exposure	0	0.00%	0	0.00%	0	0.00%	0	0.00%	0	0.00%
Equipment Malfunction	0	0.00%	0	0.00%	0	0.00%	0	0.00%	0	0.00%
LASD Return	0	0.00%	0	0.00%	0	0.00%	0	0.00%	0	0.00%
ACS Expired	0	0.00%	0	0.00%	0	0.00%	0	0.00%	0	0.00%
Total	0	0.00%	1	66.67%	2	15.38%	0	15.38%	0	0.00%



expertise in action™

Los Angeles County MTA Blue Line Approach Summary Report

Location 821: EB Century Boulevard @ Grandee Avenue



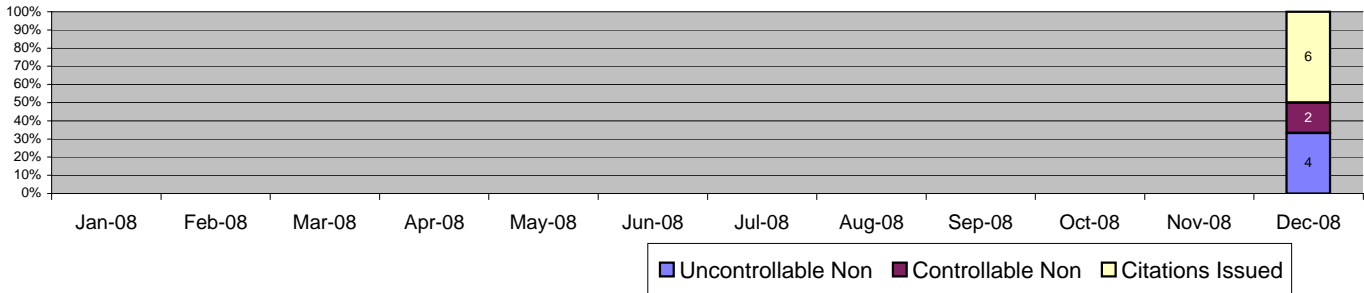
Events	Dec-08		3 Month Average		Year to Date Total		Year to Date Average		2007 Average	
	Quantity	% of Events	Quantity	% of Events	Quantity	% of Events	Quantity	% of Events	Quantity	% of Events
Non Violations	2	25.00%	2	5.42%	14	12.73%	1	12.73%	4	20.24%
Violations	6	75.00%	5	94.58%	96	87.27%	8	87.27%	17	79.76%
Total Events	8	100.00%	7	100.00%	110	100.00%	9	100.00%	21	100.00%
Violations	Quantity	% of Viol	Quantity	% of Viol	Quantity	% of Viol	Quantity	% of Viol	Quantity	% of Viol
Uncont. Non-Issued Viol	1	16.67%	2	31.25%	28	29.17%	2	29.17%	7	39.80%
Cont. Non-Issued Viol	2	33.33%	1	18.75%	41	42.71%	3	42.71%	6	33.33%
Citations	3	50.00%	3	50.00%	27	28.13%	2	28.13%	5	26.87%
Av. Violation Speed	13.50		14.31		13.35		13.35		12.74	
Av. Issued Speed	13.33		10.63		11.35		11.35		12.08	
Av. Violation Sec.	7.77		13.45		10.75		10.75		8.49	
Av. Issued Sec.	7.43		7.76		6.44		6.44		6.99	
Cal. Days/Enforc. Days	31	31	30	30	366	335	31	28	30	28
Daily Citation Yield	0.10	0.00	0.09	0.09	0.07	0.08	0.07	0.08	0.15	0.16
Cit /Viol. Iss. Rate		0%		50%		28%		28%		27%
Prosecut. Iss. Rate		0%		73%		40%		40%		45%
Non - Violations	Dec-08		3 Month Average		Year to Date Total		Year to Date Average		2007 Average	
	Quantity	% of Events	Quantity	% of Events	Quantity	% of Events	Quantity	% of Events	Quantity	% of Events
Rear Axle Violation	0	0.00%	0	0.00%	0	0.00%	0	0.00%	0	0.00%
Gate Down - No Train	0	0.00%	0	0.00%	0	0.00%	0	0.00%	0	0.00%
Train Activation	0	0.00%	0	0.00%	0	0.00%	0	0.00%	0	0.00%
Right Turn	0	0.00%	0	0.00%	0	0.00%	0	0.00%	0	0.00%
No Violation Occurred	2	25.00%	2	23.81%	14	12.73%	1	12.73%	4	20.24%
Total Non Violations	2	25.00%	2	23.81%	14	12.73%	1	12.73%	4	20.24%
Non - Issued	Quantity	% of Viol	Quantity	% of Viol	Quantity	% of Viol	Quantity	% of Viol	Quantity	% of Viol
No Plate	0	0.00%	0	0.00%	7	7.29%	1	7.29%	2	12.44%
Out of State Plate	0	0.00%	0	6.25%	1	1.04%	0	1.04%	0	1.99%
Glare on Plate	0	0.00%	0	0.00%	0	0.00%	0	0.00%	0	0.00%
Illegible Plate	0	0.00%	0	0.00%	0	0.00%	0	0.00%	0	1.00%
Plate Obstructed	0	0.00%	0	0.00%	1	1.04%	0	1.04%	0	0.50%
Windshield Glare	0	0.00%	0	0.00%	4	4.17%	0	4.17%	0	1.99%
Driver Obstructed	0	0.00%	0	0.00%	1	1.04%	0	1.04%	0	0.00%
Car Obstructed	0	0.00%	0	0.00%	0	0.00%	0	0.00%	0	0.00%
Emergency Vehicle	1	16.67%	1	12.50%	3	3.13%	0	3.13%	0	1.00%
No DMV Match Found	0	0.00%	1	12.50%	8	8.33%	1	8.33%	3	15.42%
LASD Expired	0	0.00%	0	0.00%	2	2.08%	0	2.08%	0	1.49%
Other	0	0.00%	0	0.00%	1	1.04%	0	1.04%	1	3.98%
Total	1	16.67%	2	31.25%	28	29.17%	2	29.17%	7	39.80%
Framing of Plate	2	33.33%	0	0.00%	2	2.08%	0	2.08%	0	0.00%
Focus / Clarity of Plate	0	0.00%	0	0.00%	0	0.00%	0	0.00%	0	1.00%
Dark Interior	0	0.00%	0	0.00%	2	2.08%	0	2.08%	0	1.99%
Framing of Driver	0	0.00%	0	6.25%	1	1.04%	0	1.04%	0	0.00%
Focus / Clarity of Driver	0	0.00%	0	0.00%	0	0.00%	0	0.00%	0	0.00%
Framing of Car	0	0.00%	0	6.25%	2	2.08%	0	2.08%	0	0.00%
Data Error	0	0.00%	0	0.00%	0	0.00%	0	0.00%	0	0.00%
Exposure	0	0.00%	0	0.00%	4	4.17%	0	4.17%	0	0.50%
Equipment Malfunction	0	0.00%	0	6.25%	30	31.25%	3	31.25%	0	0.50%
LASD Return	0	0.00%	0	0.00%	0	0.00%	0	0.00%	2	10.45%
ACS Expired	0	0.00%	0	0.00%	0	0.00%	0	0.00%	3	18.91%
Total	2	33.33%	1	18.75%	41	42.71%	3	42.71%	6	33.33%



expertise in action™

Los Angeles County MTA Blue Line Approach Summary Report

Location 822: WB Century Boulevard @ Grandee Avenue



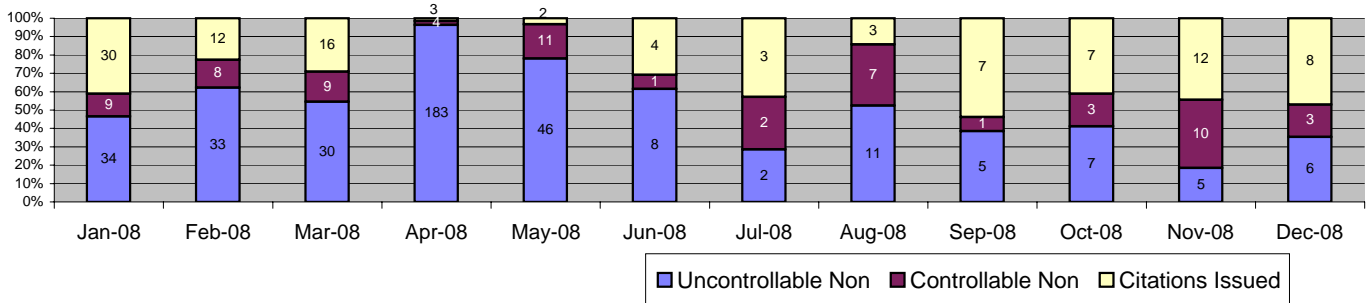
Events	Dec-08		3 Month Average		Year to Date Total		Year to Date Average		2007 Average	
	Quantity	% of Events	Quantity	% of Events	Quantity	% of Events	Quantity	% of Events	Quantity	% of Events
Non Violations	0	0.00%	0	0.00%	0	0.00%	0	0.00%	0	0.00%
Violations	12	100.00%	12	0.00%	12	100.00%	12	100.00%	0	0.00%
Total Events	12	100.00%	12	0.00%	12	100.00%	12	100.00%	0	0.00%
Violations	Quantity	% of Viol	Quantity	% of Viol	Quantity	% of Viol	Quantity	% of Viol	Quantity	% of Viol
Uncont. Non-Issued Viol	4	33.33%	4	33.33%	4	33.33%	4	33.33%	0	0.00%
Cont. Non-Issued Viol	2	16.67%	2	16.67%	2	16.67%	2	16.67%	0	0.00%
Citations	6	50.00%	6	50.00%	6	50.00%	6	50.00%	0	0.00%
Av. Violation Speed	15.75		15.75		15.75		15.75		0.00	
Av. Issued Speed	14.00		14.00		14.00		14.00		0.00	
Av. Violation Sec.	7.24		7.24		7.24		7.24		0.00	
Av. Issued Sec.	7.03		7.03		7.03		7.03		0.00	
Cal. Days/Enforc. Days	31	31	31	31	366	31	31	31	30	0
Daily Citation Yield	0.19	0.19	0.19	0.19	0.02	0.19	0.19	0.19	0.00	0.00
Cit /Viol. Iss. Rate	50%		50%		50%		50%		0%	
Prosecut. Iss. Rate	75%		75%		75%		75%		0%	
Non - Violations	Dec-08		3 Month Average		Year to Date Total		Year to Date Average		2007 Average	
	Quantity	% of Events	Quantity	% of Events	Quantity	% of Events	Quantity	% of Events	Quantity	% of Events
Rear Axle Violation	0	0.00%	0	0.00%	0	0.00%	0	0.00%	0	0.00%
Gate Down - No Train	0	0.00%	0	0.00%	0	0.00%	0	0.00%	0	0.00%
Train Activation	0	0.00%	0	0.00%	0	0.00%	0	0.00%	0	0.00%
Right Turn	0	0.00%	0	0.00%	0	0.00%	0	0.00%	0	0.00%
No Violation Occurred	0	0.00%	0	0.00%	0	0.00%	0	0.00%	0	0.00%
Total Non Violations	0	0.00%	0	0.00%	0	0.00%	0	0.00%	0	0.00%
Non - Issued	Quantity	% of Viol	Quantity	% of Viol	Quantity	% of Viol	Quantity	% of Viol	Quantity	% of Viol
No Plate	1	8.33%	1	8.33%	1	8.33%	1	8.33%	0	0.00%
Out of State Plate	0	0.00%	0	0.00%	0	0.00%	0	0.00%	0	0.00%
Glare on Plate	0	0.00%	0	0.00%	0	0.00%	0	0.00%	0	0.00%
Illegible Plate	0	0.00%	0	0.00%	0	0.00%	0	0.00%	0	0.00%
Plate Obstructed	0	0.00%	0	0.00%	0	0.00%	0	0.00%	0	0.00%
Windshield Glare	1	8.33%	1	8.33%	1	8.33%	1	8.33%	0	0.00%
Driver Obstructed	0	0.00%	0	0.00%	0	0.00%	0	0.00%	0	0.00%
Car Obstructed	0	0.00%	0	0.00%	0	0.00%	0	0.00%	0	0.00%
Emergency Vehicle	0	0.00%	0	0.00%	0	0.00%	0	0.00%	0	0.00%
No DMV Match Found	2	16.67%	2	16.67%	2	16.67%	2	16.67%	0	0.00%
LASD Expired	0	0.00%	0	0.00%	0	0.00%	0	0.00%	0	0.00%
Other	0	0.00%	0	0.00%	0	0.00%	0	0.00%	0	0.00%
Total	4	33.33%	4	33.33%	4	33.33%	4	33.33%	0	0.00%
Framing of Plate	0	0.00%	0	0.00%	0	0.00%	0	0.00%	0	0.00%
Focus / Clarity of Plate	0	0.00%	0	0.00%	0	0.00%	0	0.00%	0	0.00%
Dark Interior	0	0.00%	0	0.00%	0	0.00%	0	0.00%	0	0.00%
Framing of Driver	2	16.67%	2	16.67%	2	16.67%	2	16.67%	0	0.00%
Focus / Clarity of Driver	0	0.00%	0	0.00%	0	0.00%	0	0.00%	0	0.00%
Framing of Car	0	0.00%	0	0.00%	0	0.00%	0	0.00%	0	0.00%
Data Error	0	0.00%	0	0.00%	0	0.00%	0	0.00%	0	0.00%
Exposure	0	0.00%	0	0.00%	0	0.00%	0	0.00%	0	0.00%
Equipment Malfunction	0	0.00%	0	0.00%	0	0.00%	0	0.00%	0	0.00%
LASD Return	0	0.00%	0	0.00%	0	0.00%	0	0.00%	0	0.00%
ACS Expired	0	0.00%	0	0.00%	0	0.00%	0	0.00%	0	0.00%
Total	2	16.67%	2	16.67%	2	16.67%	2	16.67%	0	0.00%



expertise in action™

Los Angeles County MTA Blue Line Approach Summary Report

Location 841: EB 103rd Street @ Grandee Avenue



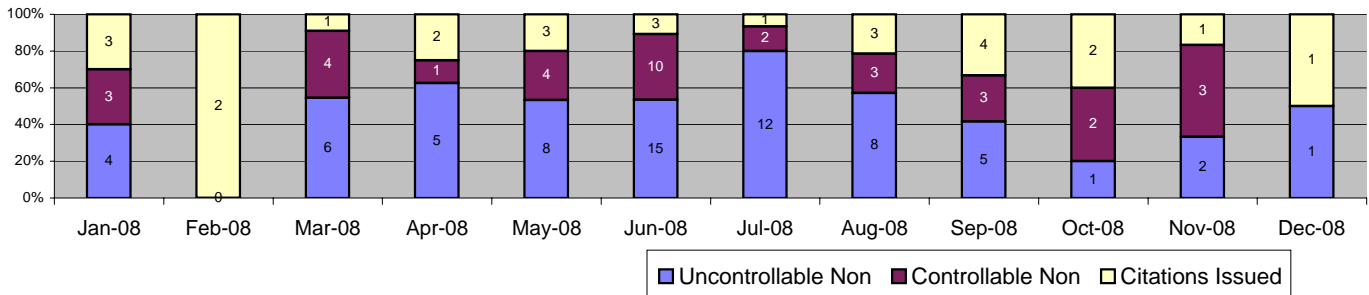
Events	Dec-08		3 Month Average		Year to Date Total		Year to Date Average		2007 Average	
	Quantity	% of Events	Quantity	% of Events	Quantity	% of Events	Quantity	% of Events	Quantity	% of Events
Non Violations	1	5.56%	9	17.24%	138	20.20%	12	20.20%	9	14.69%
Violations	17	94.44%	19	82.76%	545	79.80%	45	79.80%	52	85.31%
Total Events	18	100.00%	28	100.00%	683	100.00%	57	100.00%	61	100.00%
<i>Violations</i>	<i>Quantity</i>	<i>% of Viol</i>	<i>Quantity</i>	<i>% of Viol</i>	<i>Quantity</i>	<i>% of Viol</i>	<i>Quantity</i>	<i>% of Viol</i>	<i>Quantity</i>	<i>% of Viol</i>
Uncont. Non-Issued Viol	6	35.29%	6	29.82%	370	67.89%	31	67.89%	18	35.09%
Cont. Non-Issued Viol	3	17.65%	5	24.56%	68	12.48%	6	12.48%	15	29.51%
Citations	8	47.06%	9	45.61%	107	19.63%	9	19.63%	19	35.41%
Av. Violation Speed	14.71		14.45		14.96		14.96		16.92	
Av. Issued Speed	12.00		16.66		16.54		16.54		17.22	
Av. Violation Sec.	8.54		30.42		26.23		26.23		7.45	
Av. Issued Sec.	10.59		26.83		13.78		13.78		6.69	
Cal. Days/Enforc. Days	31	31	30	30	366	366	31	31	30	30
Daily Citation Yield	0.26	0.26	0.29	0.29	0.29	0.29	0.29	0.29	0.61	0.61
Cit /Viol. Iss. Rate	47%		46%		20%		20%		35%	
Prosecut. Iss. Rate	73%		65%		61%		61%		55%	
<i>Non - Violations</i>	<i>Quantity</i>	<i>% of Events</i>	<i>Quantity</i>	<i>% of Events</i>	<i>Quantity</i>	<i>% of Events</i>	<i>Quantity</i>	<i>% of Events</i>	<i>Quantity</i>	<i>% of Events</i>
Rear Axle Violation	0	0.00%	0	0.00%	0	0.00%	0	0.00%	0	0.27%
Gate Down - No Train	0	0.00%	0	0.00%	0	0.00%	0	0.00%	0	0.00%
Train Activation	0	0.00%	0	0.00%	0	0.00%	0	0.00%	0	0.00%
Right Turn	0	0.00%	0	0.00%	0	0.00%	0	0.00%	0	0.00%
No Violation Occurred	1	5.56%	9	31.33%	138	20.20%	12	20.20%	9	14.42%
Total Non Violations	1	5.56%	9	31.33%	138	20.20%	12	20.20%	9	14.69%
<i>Non - Issued</i>	<i>Quantity</i>	<i>% of Viol</i>	<i>Quantity</i>	<i>% of Viol</i>	<i>Quantity</i>	<i>% of Viol</i>	<i>Quantity</i>	<i>% of Viol</i>	<i>Quantity</i>	<i>% of Viol</i>
No Plate	1	5.88%	2	10.53%	43	7.89%	4	7.89%	5	9.89%
Out of State Plate	0	0.00%	0	0.00%	1	0.18%	0	0.18%	0	0.80%
Glare on Plate	1	5.88%	0	1.75%	4	0.73%	0	0.73%	2	2.87%
Illegible Plate	0	0.00%	0	0.00%	2	0.37%	0	0.37%	1	1.12%
Plate Obstructed	0	0.00%	0	1.75%	8	1.47%	1	1.47%	1	2.23%
Windshield Glare	0	0.00%	0	1.75%	13	2.39%	1	2.39%	1	1.59%
Driver Obstructed	0	0.00%	0	1.75%	13	2.39%	1	2.39%	0	0.16%
Car Obstructed	1	5.88%	0	1.75%	13	2.39%	1	2.39%	1	1.59%
Emergency Vehicle	2	11.76%	0	1.75%	8	1.47%	1	1.47%	0	0.48%
No DMV Match Found	1	5.88%	2	8.77%	36	6.61%	3	6.61%	6	11.96%
LASD Expired	0	0.00%	0	0.00%	19	3.49%	2	3.49%	1	2.23%
Other	0	0.00%	0	0.00%	210	38.53%	18	38.53%	0	0.16%
Total	6	35.29%	6	29.82%	370	67.89%	31	67.89%	18	35.09%
Framing of Plate	1	5.88%	2	12.28%	21	3.85%	2	3.85%	2	3.03%
Focus / Clarity of Plate	0	0.00%	0	0.00%	15	2.75%	1	2.75%	3	5.58%
Dark Interior	0	0.00%	0	0.00%	3	0.55%	0	0.55%	0	0.00%
Framing of Driver	1	5.88%	0	1.75%	2	0.37%	0	0.37%	0	0.16%
Focus / Clarity of Driver	0	0.00%	0	0.00%	1	0.18%	0	0.18%	0	0.64%
Framing of Car	1	5.88%	2	8.77%	21	3.85%	2	3.85%	1	2.55%
Data Error	0	0.00%	0	1.75%	1	0.18%	0	0.18%	0	0.16%
Exposure	0	0.00%	0	0.00%	0	0.00%	0	0.00%	0	0.48%
Equipment Malfunction	0	0.00%	0	0.00%	0	0.00%	0	0.00%	1	1.44%
LASD Return	0	0.00%	0	0.00%	3	0.55%	0	0.55%	4	6.70%
ACS Expired	0	0.00%	0	0.00%	1	0.18%	0	0.18%	5	8.77%
Total	3	17.65%	5	24.56%	68	12.48%	6	12.48%	15	29.51%



expertise in action™

Los Angeles County MTA Blue Line Approach Summary Report

Location 981: EB 119th Street @ Willowbrook Boulevard



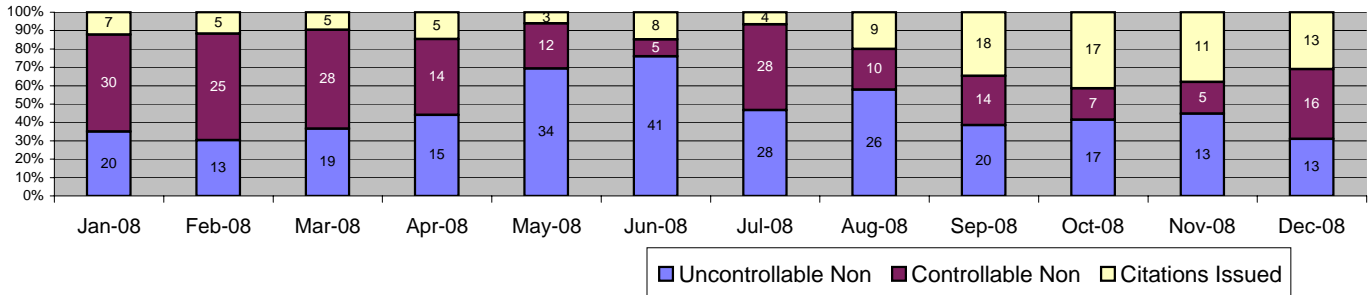
Events	Dec-08		3 Month Average		Year to Date Total		Year to Date Average		2007 Average	
	Quantity	% of Events	Quantity	% of Events	Quantity	% of Events	Quantity	% of Events	Quantity	% of Events
Non Violations	0	0.00%	1	32.59%	31	19.50%	3	19.50%	1	7.24%
Violations	2	100.00%	8	67.41%	128	80.50%	11	80.50%	12	92.76%
Total Events	2	100.00%	9	100.00%	159	100.00%	13	100.00%	13	100.00%
<i>Violations</i>	<i>Quantity</i>	<i>% of Viol</i>	<i>Quantity</i>	<i>% of Viol</i>	<i>Quantity</i>	<i>% of Viol</i>	<i>Quantity</i>	<i>% of Viol</i>	<i>Quantity</i>	<i>% of Viol</i>
Uncont. Non-Issued Viol	1	50.00%	3	34.78%	67	52.34%	6	52.34%	4	31.91%
Cont. Non-Issued Viol	0	0.00%	3	34.78%	35	27.34%	3	27.34%	5	39.72%
Citations	1	50.00%	2	30.43%	26	20.31%	2	20.31%	3	28.37%
Av. Violation Speed	15.00		11.42		12.97		12.97		12.46	
Av. Issued Speed	18.00		11.67		14.07		14.07		12.95	
Av. Violation Sec.	8.75		31.28		35.90		35.90		32.33	
Av. Issued Sec.	8.80		20.37		44.07		44.07		26.75	
Cal. Days/Enforc. Days	31	2	30	23	366	315	31	26	30	30
Daily Citation Yield	0.03	0.50	0.08	0.10	0.07	0.08	0.07	0.08	0.11	0.11
Cit /Viol. Iss. Rate		0%		30%		20%		20%		28%
Prosecut. Iss. Rate		0%		47%		43%		43%		42%
<i>Non - Violations</i>	<i>Quantity</i>	<i>% of Events</i>	<i>Quantity</i>	<i>% of Events</i>	<i>Quantity</i>	<i>% of Events</i>	<i>Quantity</i>	<i>% of Events</i>	<i>Quantity</i>	<i>% of Events</i>
Rear Axle Violation	0	0.00%	0	0.00%	2	1.26%	0	1.26%	0	0.00%
Gate Down - No Train	0	0.00%	0	0.00%	0	0.00%	0	0.00%	0	0.00%
Train Activation	0	0.00%	0	0.00%	0	0.00%	0	0.00%	0	0.00%
Right Turn	0	0.00%	0	0.00%	0	0.00%	0	0.00%	0	0.00%
No Violation Occurred	0	0.00%	1	11.54%	29	18.24%	2	18.24%	1	7.24%
Total Non Violations	0	0.00%	1	11.54%	31	19.50%	3	19.50%	1	7.24%
<i>Non - Issued</i>	<i>Quantity</i>	<i>% of Viol</i>	<i>Quantity</i>	<i>% of Viol</i>	<i>Quantity</i>	<i>% of Viol</i>	<i>Quantity</i>	<i>% of Viol</i>	<i>Quantity</i>	<i>% of Viol</i>
No Plate	1	50.00%	1	17.39%	18	14.06%	2	14.06%	1	11.35%
Out of State Plate	0	0.00%	0	0.00%	0	0.00%	0	0.00%	0	0.71%
Glare on Plate	0	0.00%	0	0.00%	0	0.00%	0	0.00%	0	0.00%
Illegible Plate	0	0.00%	0	0.00%	0	0.00%	0	0.00%	0	0.71%
Plate Obstructed	0	0.00%	0	4.35%	1	0.78%	0	0.78%	0	2.13%
Windshield Glare	0	0.00%	1	8.70%	20	15.63%	2	15.63%	0	2.13%
Driver Obstructed	0	0.00%	0	0.00%	2	1.56%	0	1.56%	0	0.71%
Car Obstructed	0	0.00%	0	0.00%	1	0.78%	0	0.78%	0	3.55%
Emergency Vehicle	0	0.00%	0	0.00%	13	10.16%	1	10.16%	0	3.55%
No DMV Match Found	0	0.00%	0	4.35%	7	5.47%	1	5.47%	1	4.26%
LASD Expired	0	0.00%	0	0.00%	1	0.78%	0	0.78%	0	1.42%
Other	0	0.00%	0	0.00%	4	3.13%	0	3.13%	0	1.42%
Total	1	50.00%	3	34.78%	67	52.34%	6	52.34%	4	31.91%
Framing of Plate	0	0.00%	0	4.35%	4	3.13%	0	3.13%	0	2.84%
Focus / Clarity of Plate	0	0.00%	0	0.00%	0	0.00%	0	0.00%	0	2.84%
Dark Interior	0	0.00%	0	0.00%	2	1.56%	0	1.56%	0	0.00%
Framing of Driver	0	0.00%	0	4.35%	2	1.56%	0	1.56%	0	0.71%
Focus / Clarity of Driver	0	0.00%	0	0.00%	1	0.78%	0	0.78%	0	0.71%
Framing of Car	0	0.00%	2	26.09%	26	20.31%	2	20.31%	3	21.99%
Data Error	0	0.00%	0	0.00%	0	0.00%	0	0.00%	0	0.71%
Exposure	0	0.00%	0	0.00%	0	0.00%	0	0.00%	0	0.00%
Equipment Malfunction	0	0.00%	0	0.00%	0	0.00%	0	0.00%	0	0.00%
LASD Return	0	0.00%	0	0.00%	0	0.00%	0	0.00%	0	2.84%
ACS Expired	0	0.00%	0	0.00%	0	0.00%	0	0.00%	1	7.09%
Total	0	0.00%	3	34.78%	35	27.34%	3	27.34%	5	39.72%



expertise in action™

Los Angeles County MTA Blue Line Approach Summary Report

Location 982: WB 119th Street @ Willowbrook Boulevard



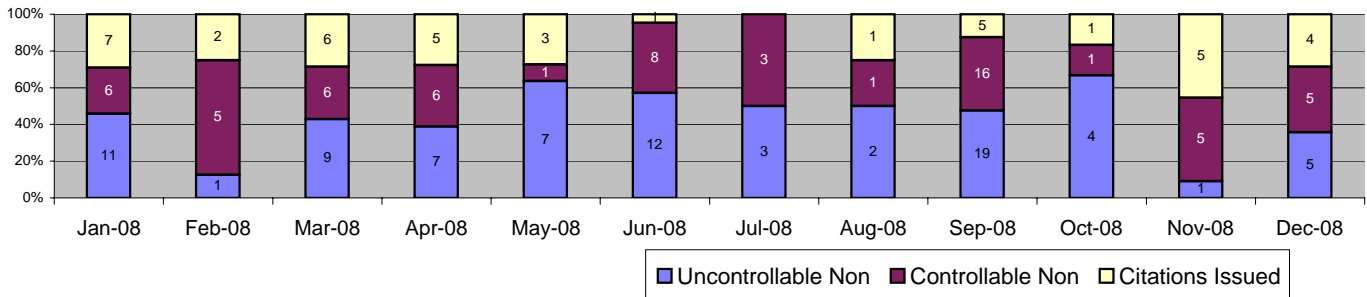
Events	Dec-08		3 Month Average		Year to Date Total		Year to Date Average		2007 Average	
	Quantity	% of Events	Quantity	% of Events	Quantity	% of Events	Quantity	% of Events	Quantity	% of Events
Non Violations	9	17.65%	5	23.07%	376	40.26%	31	40.26%	17	29.68%
Violations	42	82.35%	41	76.93%	558	59.74%	47	59.74%	40	70.32%
Total Events	51	100.00%	46	100.00%	934	100.00%	78	100.00%	57	100.00%
<i>Violations</i>	<i>Quantity</i>	<i>% of Viol</i>	<i>Quantity</i>	<i>% of Viol</i>	<i>Quantity</i>	<i>% of Viol</i>	<i>Quantity</i>	<i>% of Viol</i>	<i>Quantity</i>	<i>% of Viol</i>
Uncont. Non-Issued Viol	13	30.95%	17	40.98%	259	46.42%	22	46.42%	9	22.11%
Cont. Non-Issued Viol	16	38.10%	9	21.31%	194	34.77%	16	34.77%	30	74.87%
Citations	13	30.95%	15	37.70%	105	18.82%	9	18.82%	1	3.02%
Av. Violation Speed	10.29		10.81		10.06		10.06		10.66	
Av. Issued Speed	9.77		10.78		9.37		9.37		7.10	
Av. Violation Sec.	8.83		8.79		17.12		17.12		13.17	
Av. Issued Sec.	6.93		6.93		13.87		13.87		6.55	
Cal. Days/Enforc. Days	31	31	30	30	366	366	31	31	30	30
Daily Citation Yield	0.42	0.42	0.51	0.51	0.29	0.29	0.29	0.29	0.04	0.04
Cit /Viol. Iss. Rate	31%		38%		19%		19%		3%	
Prosecut. Iss. Rate	45%		64%		35%		35%		4%	
<i>Non - Violations</i>	Dec-08		3 Month Average		Year to Date Total		Year to Date Average		2007 Average	
	<i>Quantity</i>	<i>% of Events</i>	<i>Quantity</i>	<i>% of Events</i>	<i>Quantity</i>	<i>% of Events</i>	<i>Quantity</i>	<i>% of Events</i>	<i>Quantity</i>	<i>% of Events</i>
Rear Axle Violation	0	0.00%	0	0.00%	1	0.11%	0	0.11%	0	0.35%
Gate Down - No Train	0	0.00%	0	0.00%	0	0.00%	0	0.00%	0	0.00%
Train Activation	4	7.84%	2	5.11%	107	11.46%	9	11.46%	0	0.00%
Right Turn	0	0.00%	0	0.00%	0	0.00%	0	0.00%	0	0.00%
No Violation Occurred	5	9.80%	3	5.84%	268	28.69%	22	28.69%	17	29.33%
Total Non Violations	9	17.65%	5	10.95%	376	40.26%	31	40.26%	17	29.68%
<i>Non - Issued</i>	<i>Quantity</i>	<i>% of Viol</i>	<i>Quantity</i>	<i>% of Viol</i>	<i>Quantity</i>	<i>% of Viol</i>	<i>Quantity</i>	<i>% of Viol</i>	<i>Quantity</i>	<i>% of Viol</i>
No Plate	4	9.52%	4	10.66%	63	11.29%	5	11.29%	4	10.55%
Out of State Plate	0	0.00%	0	0.00%	3	0.54%	0	0.54%	0	0.00%
Glare on Plate	0	0.00%	0	0.00%	0	0.00%	0	0.00%	0	0.00%
Illegible Plate	0	0.00%	1	1.64%	5	0.90%	0	0.90%	1	1.51%
Plate Obstructed	3	7.14%	1	2.46%	17	3.05%	1	3.05%	1	2.51%
Windshield Glare	3	7.14%	4	9.84%	72	12.90%	6	12.90%	0	0.50%
Driver Obstructed	0	0.00%	0	0.82%	11	1.97%	1	1.97%	1	1.51%
Car Obstructed	2	4.76%	1	1.64%	14	2.51%	1	2.51%	0	1.01%
Emergency Vehicle	0	0.00%	2	4.10%	15	2.69%	1	2.69%	0	1.01%
No DMV Match Found	1	2.38%	4	9.84%	29	5.20%	2	5.20%	1	1.51%
LASD Expired	0	0.00%	0	0.00%	24	4.30%	2	4.30%	1	1.51%
Other	0	0.00%	0	0.00%	6	1.08%	1	1.08%	0	0.50%
Total	13	30.95%	17	40.98%	259	46.42%	22	46.42%	9	22.11%
Framing of Plate	4	9.52%	1	2.46%	22	3.94%	2	3.94%	1	1.51%
Focus / Clarity of Plate	0	0.00%	0	0.82%	36	6.45%	3	6.45%	24	61.31%
Dark Interior	1	2.38%	0	0.82%	12	2.15%	1	2.15%	0	0.50%
Framing of Driver	1	2.38%	0	0.82%	9	1.61%	1	1.61%	0	0.50%
Focus / Clarity of Driver	0	0.00%	0	0.82%	3	0.54%	0	0.54%	0	0.00%
Framing of Car	10	23.81%	6	13.93%	76	13.62%	6	13.62%	2	6.03%
Data Error	0	0.00%	0	0.00%	0	0.00%	0	0.00%	0	0.00%
Exposure	0	0.00%	0	0.00%	22	3.94%	2	3.94%	0	0.50%
Equipment Malfunction	0	0.00%	1	1.64%	14	2.51%	1	2.51%	2	4.52%
LASD Return	0	0.00%	0	0.00%	0	0.00%	0	0.00%	0	0.00%
ACS Expired	0	0.00%	0	0.00%	0	0.00%	0	0.00%	0	0.00%
Total	16	38.10%	9	21.31%	194	34.77%	16	34.77%	30	74.87%



expertise in action™

Los Angeles County MTA Blue Line Approach Summary Report

Location 1051: EB 130th Street @ Willowbrook Boulevard



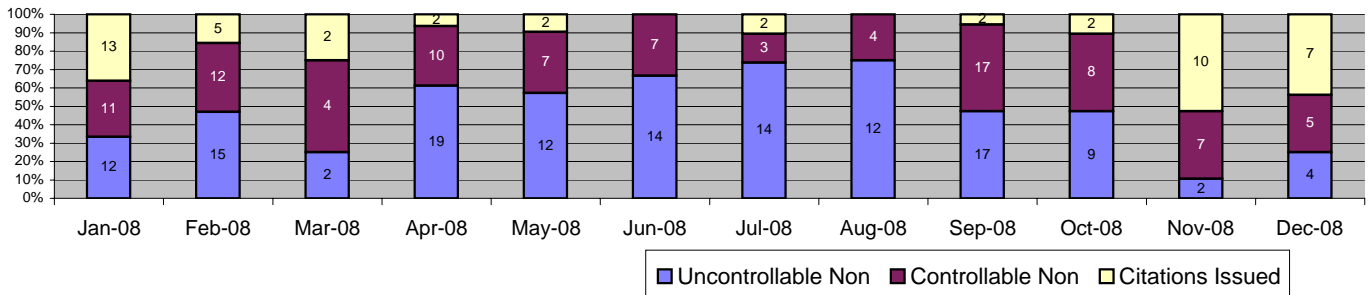
Events	Dec-08		3 Month Average		Year to Date Total		Year to Date Average		2007 Average	
	Quantity	% of Events	Quantity	% of Events	Quantity	% of Events	Quantity	% of Events	Quantity	% of Events
Non Violations	0	0.00%	1	3.70%	6	3.16%	1	3.16%	0	1.58%
Violations	14	100.00%	19	96.30%	184	96.84%	15	96.84%	16	98.42%
Total Events	14	100.00%	20	100.00%	190	100.00%	16	100.00%	16	100.00%
<i>Violations</i>	<i>Quantity</i>	<i>% of Viol</i>	<i>Quantity</i>	<i>% of Viol</i>	<i>Quantity</i>	<i>% of Viol</i>	<i>Quantity</i>	<i>% of Viol</i>	<i>Quantity</i>	<i>% of Viol</i>
Uncont. Non-Issued Viol	5	35.71%	8	42.11%	81	44.02%	7	44.02%	5	29.41%
Cont. Non-Issued Viol	5	35.71%	7	38.60%	63	34.24%	5	34.24%	8	48.66%
Citations	4	28.57%	4	19.30%	40	21.74%	3	21.74%	3	21.93%
Av. Violation Speed	14.00		13.07		13.56		13.56		13.02	
Av. Issued Speed	14.75		13.33		11.73		11.73		14.21	
Av. Violation Sec.	6.03		39.40		25.17		25.17		13.39	
Av. Issued Sec.	5.97		18.91		15.15		15.15		12.17	
Cal. Days/Enforc. Days	31	31	30	30	366	366	31	31	30	30
Daily Citation Yield	0.13	0.13	0.12	0.12	0.11	0.11	0.11	0.11	0.11	0.11
Cit /Viol. Iss. Rate		29%		19%		22%		22%		22%
Prosecut. Iss. Rate		44%		33%		39%		39%		31%
<i>Non - Violations</i>	<i>Quantity</i>	<i>% of Events</i>	<i>Quantity</i>	<i>% of Events</i>	<i>Quantity</i>	<i>% of Events</i>	<i>Quantity</i>	<i>% of Events</i>	<i>Quantity</i>	<i>% of Events</i>
Rear Axle Violation	0	0.00%	0	0.00%	0	0.00%	0	0.00%	0	0.00%
Gate Down - No Train	0	0.00%	0	0.00%	0	0.00%	0	0.00%	0	0.00%
Train Activation	0	0.00%	0	0.00%	0	0.00%	0	0.00%	0	0.00%
Right Turn	0	0.00%	0	0.00%	0	0.00%	0	0.00%	0	0.00%
No Violation Occurred	0	0.00%	1	3.39%	6	3.16%	1	3.16%	0	1.58%
Total Non Violations	0	0.00%	1	3.39%	6	3.16%	1	3.16%	0	1.58%
<i>Non - Issued</i>	<i>Quantity</i>	<i>% of Viol</i>	<i>Quantity</i>	<i>% of Viol</i>	<i>Quantity</i>	<i>% of Viol</i>	<i>Quantity</i>	<i>% of Viol</i>	<i>Quantity</i>	<i>% of Viol</i>
No Plate	1	7.14%	2	8.77%	16	8.70%	1	8.70%	1	7.49%
Out of State Plate	1	7.14%	0	0.00%	1	0.54%	0	0.54%	0	0.53%
Glare on Plate	0	0.00%	0	0.00%	0	0.00%	0	0.00%	0	0.00%
Illegible Plate	0	0.00%	0	0.00%	4	2.17%	0	2.17%	0	1.07%
Plate Obstructed	1	7.14%	0	1.75%	2	1.09%	0	1.09%	0	1.07%
Windshield Glare	0	0.00%	5	28.07%	41	22.28%	3	22.28%	1	4.28%
Driver Obstructed	0	0.00%	0	0.00%	1	0.54%	0	0.54%	0	1.07%
Car Obstructed	0	0.00%	0	0.00%	1	0.54%	0	0.54%	0	1.60%
Emergency Vehicle	0	0.00%	0	0.00%	3	1.63%	0	1.63%	0	2.14%
No DMV Match Found	2	14.29%	1	3.51%	7	3.80%	1	3.80%	1	8.56%
LASD Expired	0	0.00%	0	0.00%	4	2.17%	0	2.17%	0	1.60%
Other	0	0.00%	0	0.00%	1	0.54%	0	0.54%	0	0.00%
Total	5	35.71%	8	42.11%	81	44.02%	7	44.02%	5	29.41%
Framing of Plate	0	0.00%	1	3.51%	5	2.72%	0	2.72%	1	6.42%
Focus / Clarity of Plate	0	0.00%	0	0.00%	0	0.00%	0	0.00%	1	6.95%
Dark Interior	2	14.29%	3	17.54%	19	10.33%	2	10.33%	1	3.21%
Framing of Driver	0	0.00%	1	3.51%	3	1.63%	0	1.63%	0	0.53%
Focus / Clarity of Driver	0	0.00%	0	0.00%	1	0.54%	0	0.54%	0	1.60%
Framing of Car	3	21.43%	2	12.28%	28	15.22%	2	15.22%	3	19.79%
Data Error	0	0.00%	0	0.00%	0	0.00%	0	0.00%	0	0.00%
Exposure	0	0.00%	0	0.00%	0	0.00%	0	0.00%	0	0.53%
Equipment Malfunction	0	0.00%	0	1.75%	7	3.80%	1	3.80%	1	3.74%
LASD Return	0	0.00%	0	0.00%	0	0.00%	0	0.00%	0	2.67%
ACS Expired	0	0.00%	0	0.00%	0	0.00%	0	0.00%	1	3.21%
Total	5	35.71%	7	38.60%	63	34.24%	5	34.24%	8	48.66%



expertise in action™

Los Angeles County MTA Blue Line Approach Summary Report

Location 1052: WB 130th Street @ Willowbrook Blvd.



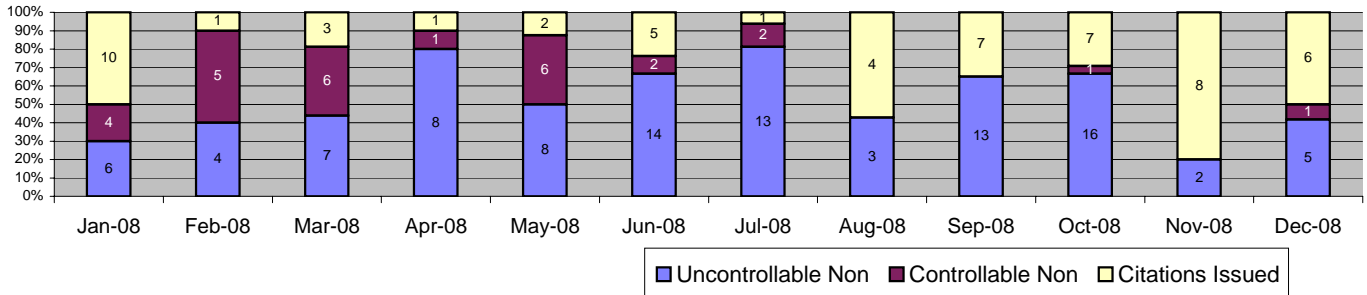
Events	Dec-08		3 Month Average		Year to Date Total		Year to Date Average		2007 Average	
	Quantity	% of Events	Quantity	% of Events	Quantity	% of Events	Quantity	% of Events	Quantity	% of Events
Non Violations	1	5.88%	6	9.74%	42	13.29%	4	13.29%	2	8.33%
Violations	16	94.12%	25	90.26%	274	86.71%	23	86.71%	19	91.67%
Total Events	17	100.00%	31	100.00%	316	100.00%	26	100.00%	21	100.00%
<i>Violations</i>	<i>Quantity</i>	<i>% of Viol</i>	<i>Quantity</i>	<i>% of Viol</i>	<i>Quantity</i>	<i>% of Viol</i>	<i>Quantity</i>	<i>% of Viol</i>	<i>Quantity</i>	<i>% of Viol</i>
Uncont. Non-Issued Viol	4	25.00%	9	37.84%	132	48.18%	11	48.18%	8	40.26%
Cont. Non-Issued Viol	5	31.25%	11	43.24%	95	34.67%	8	34.67%	7	35.06%
Citations	7	43.75%	5	18.92%	47	17.15%	4	17.15%	5	24.68%
Av. Violation Speed	12.69		11.73		12.12		12.12		10.71	
Av. Issued Speed	12.71		12.73		10.67		10.67		9.86	
Av. Violation Sec.	5.84		32.62		20.47		20.47		29.25	
Av. Issued Sec.	5.89		40.34		18.31		18.31		37.24	
Cal. Days/Enforc. Days	31	31	30	30	366	366	31	31	31	31
Daily Citation Yield	0.23	0.23	0.15	0.15	0.13	0.13	0.13	0.13	0.16	0.16
Cit /Viol. Iss. Rate	44%		19%		17%		17%		25%	
Prosecut. Iss. Rate	58%		30%		33%		33%		41%	
<i>Non - Violations</i>	<i>Quantity</i>	<i>% of Events</i>	<i>Quantity</i>	<i>% of Events</i>	<i>Quantity</i>	<i>% of Events</i>	<i>Quantity</i>	<i>% of Events</i>	<i>Quantity</i>	<i>% of Events</i>
Rear Axle Violation	0	0.00%	0	0.00%	0	0.00%	0	0.00%	0	1.19%
Gate Down - No Train	0	0.00%	0	0.00%	0	0.00%	0	0.00%	0	0.00%
Train Activation	0	0.00%	0	1.09%	5	1.58%	0	1.58%	0	0.00%
Right Turn	0	0.00%	0	0.00%	0	0.00%	0	0.00%	0	0.00%
No Violation Occurred	1	5.88%	6	18.48%	37	11.71%	3	11.71%	2	7.14%
Total Non Violations	1	5.88%	6	19.57%	42	13.29%	4	13.29%	2	8.33%
<i>Non - Issued</i>	<i>Quantity</i>	<i>% of Viol</i>	<i>Quantity</i>	<i>% of Viol</i>	<i>Quantity</i>	<i>% of Viol</i>	<i>Quantity</i>	<i>% of Viol</i>	<i>Quantity</i>	<i>% of Viol</i>
No Plate	0	0.00%	2	9.46%	20	7.30%	2	7.30%	1	5.19%
Out of State Plate	0	0.00%	0	0.00%	0	0.00%	0	0.00%	0	0.00%
Glare on Plate	0	0.00%	1	2.70%	2	0.73%	0	0.73%	1	5.19%
Illegible Plate	0	0.00%	0	1.35%	1	0.36%	0	0.36%	0	1.30%
Plate Obstructed	0	0.00%	0	0.00%	4	1.46%	0	1.46%	1	3.90%
Windshield Glare	1	6.25%	5	21.62%	75	27.37%	6	27.37%	1	2.60%
Driver Obstructed	1	6.25%	0	0.00%	3	1.09%	0	1.09%	1	2.60%
Car Obstructed	0	0.00%	0	1.35%	2	0.73%	0	0.73%	1	3.90%
Emergency Vehicle	0	0.00%	0	1.35%	4	1.46%	0	1.46%	0	0.00%
No DMV Match Found	2	12.50%	0	0.00%	18	6.57%	2	6.57%	2	9.09%
LASD Expired	0	0.00%	0	0.00%	2	0.73%	0	0.73%	1	6.49%
Other	0	0.00%	0	0.00%	1	0.36%	0	0.36%	0	0.00%
Total	4	25.00%	9	37.84%	132	48.18%	11	48.18%	8	40.26%
Framing of Plate	0	0.00%	1	4.05%	3	1.09%	0	1.09%	0	1.30%
Focus / Clarity of Plate	0	0.00%	1	5.41%	8	2.92%	1	2.92%	3	12.99%
Dark Interior	1	6.25%	4	17.57%	25	9.12%	2	9.12%	0	1.30%
Framing of Driver	0	0.00%	0	0.00%	3	1.09%	0	1.09%	0	1.30%
Focus / Clarity of Driver	0	0.00%	1	2.70%	5	1.82%	0	1.82%	0	1.30%
Framing of Car	4	25.00%	3	10.81%	27	9.85%	2	9.85%	2	9.09%
Data Error	0	0.00%	0	0.00%	0	0.00%	0	0.00%	0	0.00%
Exposure	0	0.00%	0	0.00%	8	2.92%	1	2.92%	0	1.30%
Equipment Malfunction	0	0.00%	1	2.70%	16	5.84%	1	5.84%	1	3.90%
LASD Return	0	0.00%	0	0.00%	0	0.00%	0	0.00%	0	1.30%
ACS Expired	0	0.00%	0	0.00%	0	0.00%	0	0.00%	0	1.30%
Total	5	31.25%	11	43.24%	95	34.67%	8	34.67%	7	35.06%



expertise in action™

Los Angeles County MTA Blue Line Approach Summary Report

Location 1081: EB Stockwell Street @ Willowbrook Boulevard



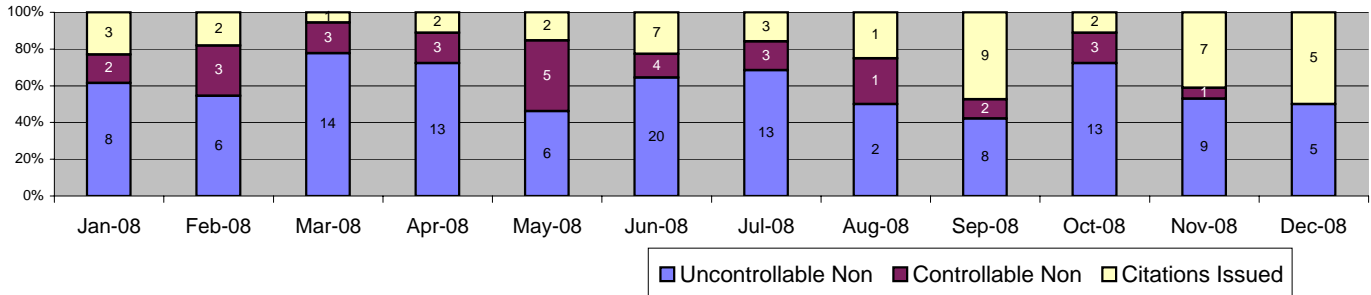
Events	Dec-08		3 Month Average		Year to Date Total		Year to Date Average		2007 Average	
	Quantity	% of Events	Quantity	% of Events	Quantity	% of Events	Quantity	% of Events	Quantity	% of Events
Non Violations	6	33.33%	8	17.39%	46	20.18%	4	20.18%	8	19.50%
Violations	12	66.67%	18	82.61%	182	79.82%	15	79.82%	32	80.50%
Total Events	18	100.00%	26	100.00%	228	100.00%	19	100.00%	40	100.00%
<i>Violations</i>	<i>Quantity</i>	<i>% of Viol</i>	<i>Quantity</i>	<i>% of Viol</i>	<i>Quantity</i>	<i>% of Viol</i>	<i>Quantity</i>	<i>% of Viol</i>	<i>Quantity</i>	<i>% of Viol</i>
Uncont. Non-Issued Viol	5	41.67%	10	57.41%	99	54.40%	8	54.40%	4	12.11%
Cont. Non-Issued Viol	1	8.33%	0	1.85%	28	15.38%	2	15.38%	25	77.02%
Citations	6	50.00%	7	40.74%	55	30.22%	5	30.22%	4	10.87%
Av. Violation Speed	11.83		13.25		13.20		13.20		13.45	
Av. Issued Speed	10.67		14.04		12.49		12.49		11.40	
Av. Violation Sec.	22.59		43.22		36.65		36.65		17.91	
Av. Issued Sec.	37.90		44.16		58.18		58.18		18.85	
Cal. Days/Enforc. Days	31	31	30	30	366	366	31	31	31	31
Daily Citation Yield	0.19	0.19	0.24	0.24	0.15	0.15	0.15	0.15	0.11	0.11
Cit /Viol. Iss. Rate	50%		41%		30%		30%		11%	
Prosecut. Iss. Rate	86%		96%		66%		66%		12%	
<i>Non - Violations</i>	<i>Quantity</i>	<i>% of Events</i>	<i>Quantity</i>	<i>% of Events</i>	<i>Quantity</i>	<i>% of Events</i>	<i>Quantity</i>	<i>% of Events</i>	<i>Quantity</i>	<i>% of Events</i>
Rear Axle Violation	0	0.00%	0	0.00%	1	0.44%	0	0.44%	0	0.00%
Gate Down - No Train	0	0.00%	0	0.00%	0	0.00%	0	0.00%	0	0.00%
Train Activation	0	0.00%	0	0.00%	0	0.00%	0	0.00%	0	0.50%
Right Turn	0	0.00%	0	0.00%	0	0.00%	0	0.00%	0	0.00%
No Violation Occurred	6	33.33%	8	29.87%	45	19.74%	4	19.74%	8	19.00%
Total Non Violations	6	33.33%	8	29.87%	46	20.18%	4	20.18%	8	19.50%
<i>Non - Issued</i>	<i>Quantity</i>	<i>% of Viol</i>	<i>Quantity</i>	<i>% of Viol</i>	<i>Quantity</i>	<i>% of Viol</i>	<i>Quantity</i>	<i>% of Viol</i>	<i>Quantity</i>	<i>% of Viol</i>
No Plate	1	8.33%	1	3.70%	16	8.79%	1	8.79%	1	2.80%
Out of State Plate	0	0.00%	0	0.00%	0	0.00%	0	0.00%	0	0.00%
Glare on Plate	0	0.00%	0	0.00%	0	0.00%	0	0.00%	0	0.00%
Illegible Plate	0	0.00%	0	0.00%	2	1.10%	0	1.10%	0	0.31%
Plate Obstructed	0	0.00%	1	3.70%	3	1.65%	0	1.65%	0	0.31%
Windshield Glare	1	8.33%	3	14.81%	32	17.58%	3	17.58%	1	1.86%
Driver Obstructed	0	0.00%	0	1.85%	3	1.65%	0	1.65%	0	0.00%
Car Obstructed	0	0.00%	0	0.00%	1	0.55%	0	0.55%	0	0.93%
Emergency Vehicle	0	0.00%	0	1.85%	1	0.55%	0	0.55%	0	0.31%
No DMV Match Found	3	25.00%	3	16.67%	25	13.74%	2	13.74%	2	4.66%
LASD Expired	0	0.00%	0	0.00%	3	1.65%	0	1.65%	0	0.93%
Other	0	0.00%	3	14.81%	13	7.14%	1	7.14%	0	0.00%
Total	5	41.67%	10	57.41%	99	54.40%	8	54.40%	4	12.11%
Framing of Plate	0	0.00%	0	0.00%	0	0.00%	0	0.00%	0	0.31%
Focus / Clarity of Plate	0	0.00%	0	0.00%	0	0.00%	0	0.00%	0	0.00%
Dark Interior	0	0.00%	0	0.00%	14	7.69%	1	7.69%	1	1.55%
Framing of Driver	0	0.00%	0	0.00%	2	1.10%	0	1.10%	0	0.31%
Focus / Clarity of Driver	0	0.00%	0	0.00%	0	0.00%	0	0.00%	0	0.00%
Framing of Car	1	8.33%	0	1.85%	9	4.95%	1	4.95%	1	2.48%
Data Error	0	0.00%	0	0.00%	0	0.00%	0	0.00%	0	0.00%
Exposure	0	0.00%	0	0.00%	1	0.55%	0	0.55%	0	1.24%
Equipment Malfunction	0	0.00%	0	0.00%	2	1.10%	0	1.10%	21	65.53%
LASD Return	0	0.00%	0	0.00%	0	0.00%	0	0.00%	1	3.11%
ACS Expired	0	0.00%	0	0.00%	0	0.00%	0	0.00%	1	2.48%
Total	1	8.33%	0	1.85%	28	15.38%	2	15.38%	25	77.02%



expertise in action™

Los Angeles County MTA Blue Line Approach Summary Report

Location 1082: WB Stockwell Street @ Willowbrook Boulevard



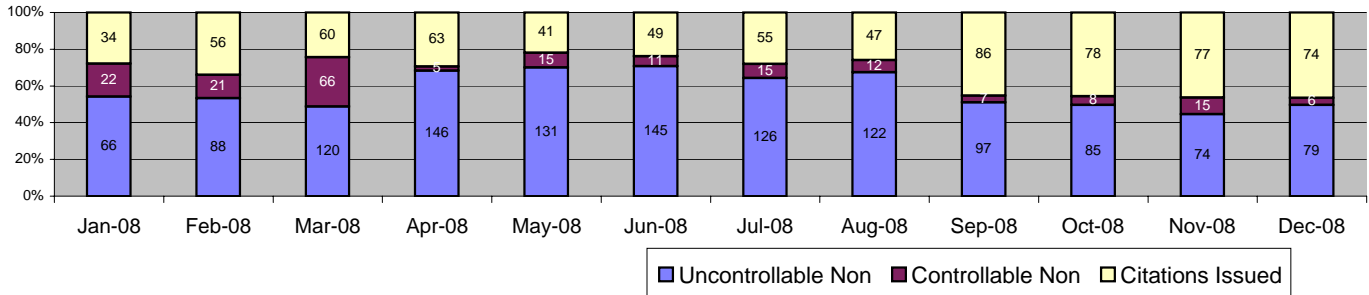
Events	Dec-08		3 Month Average		Year to Date Total		Year to Date Average		2007 Average	
	Quantity	% of Events	Quantity	% of Events	Quantity	% of Events	Quantity	% of Events	Quantity	% of Events
Non Violations	1	9.09%	0	2.78%	6	3.05%	1	3.05%	15	58.21%
Violations	10	90.91%	18	97.22%	191	96.95%	16	96.95%	11	41.79%
Total Events	11	100.00%	18	100.00%	197	100.00%	16	100.00%	25	100.00%
<i>Violations</i>	<i>Quantity</i>	<i>% of Viol</i>	<i>Quantity</i>	<i>% of Viol</i>	<i>Quantity</i>	<i>% of Viol</i>	<i>Quantity</i>	<i>% of Viol</i>	<i>Quantity</i>	<i>% of Viol</i>
Uncont. Non-Issued Viol	5	50.00%	10	55.56%	117	61.26%	10	61.26%	4	37.61%
Cont. Non-Issued Viol	0	0.00%	2	11.11%	30	15.71%	3	15.71%	4	38.46%
Citations	5	50.00%	6	33.33%	44	23.04%	4	23.04%	3	23.93%
Av. Violation Speed	13.70		12.75		13.24		13.24		13.69	
Av. Issued Speed	10.40		12.89		13.93		13.93		12.70	
Av. Violation Sec.	7.40		51.91		38.39		38.39		39.26	
Av. Issued Sec.	7.96		41.63		33.59		33.59		36.93	
Cal. Days/Enforc. Days	31	31	30	30	366	366	31	31	30	30
Daily Citation Yield	0.16	0.16	0.20	0.20	0.12	0.12	0.12	0.12	0.08	0.08
Cit /Viol. Iss. Rate	50%		33%		23%		23%		24%	
Prosecut. Iss. Rate	100%		75%		59%		59%		38%	
<i>Non - Violations</i>	<i>Quantity</i>	<i>% of Events</i>	<i>Quantity</i>	<i>% of Events</i>	<i>Quantity</i>	<i>% of Events</i>	<i>Quantity</i>	<i>% of Events</i>	<i>Quantity</i>	<i>% of Events</i>
Rear Axle Violation	0	0.00%	0	0.00%	1	0.51%	0	0.51%	0	0.00%
Gate Down - No Train	0	0.00%	0	0.00%	0	0.00%	0	0.00%	0	1.79%
Train Activation	0	0.00%	0	0.00%	0	0.00%	0	0.00%	0	0.00%
Right Turn	0	0.00%	0	0.00%	0	0.00%	0	0.00%	0	0.00%
No Violation Occurred	1	9.09%	0	0.00%	5	2.54%	0	2.54%	14	56.43%
Total Non Violations	1	9.09%	0	0.00%	6	3.05%	1	3.05%	15	58.21%
<i>Non - Issued</i>	<i>Quantity</i>	<i>% of Viol</i>	<i>Quantity</i>	<i>% of Viol</i>	<i>Quantity</i>	<i>% of Viol</i>	<i>Quantity</i>	<i>% of Viol</i>	<i>Quantity</i>	<i>% of Viol</i>
No Plate	2	20.00%	3	16.67%	25	13.09%	2	13.09%	1	12.82%
Out of State Plate	1	10.00%	0	0.00%	2	1.05%	0	1.05%	0	0.00%
Glare on Plate	0	0.00%	0	0.00%	0	0.00%	0	0.00%	0	1.71%
Illegible Plate	0	0.00%	0	0.00%	0	0.00%	0	0.00%	0	0.85%
Plate Obstructed	0	0.00%	0	0.00%	2	1.05%	0	1.05%	0	0.00%
Windshield Glare	0	0.00%	1	5.56%	30	15.71%	3	15.71%	0	3.42%
Driver Obstructed	1	10.00%	0	0.00%	5	2.62%	0	2.62%	0	0.85%
Car Obstructed	0	0.00%	0	1.85%	4	2.09%	0	2.09%	0	0.85%
Emergency Vehicle	0	0.00%	1	3.70%	2	1.05%	0	1.05%	0	2.56%
No DMV Match Found	1	10.00%	3	16.67%	32	16.75%	3	16.75%	1	12.82%
LASD Expired	0	0.00%	0	0.00%	5	2.62%	0	2.62%	0	1.71%
Other	0	0.00%	2	11.11%	10	5.24%	1	5.24%	0	0.00%
Total	5	50.00%	10	55.56%	117	61.26%	10	61.26%	4	37.61%
Framing of Plate	0	0.00%	0	0.00%	2	1.05%	0	1.05%	0	0.00%
Focus / Clarity of Plate	0	0.00%	0	0.00%	0	0.00%	0	0.00%	0	1.71%
Dark Interior	0	0.00%	0	0.00%	3	1.57%	0	1.57%	0	0.00%
Framing of Driver	0	0.00%	0	1.85%	4	2.09%	0	2.09%	0	1.71%
Focus / Clarity of Driver	0	0.00%	0	0.00%	0	0.00%	0	0.00%	0	0.85%
Framing of Car	0	0.00%	2	9.26%	20	10.47%	2	10.47%	1	12.82%
Data Error	0	0.00%	0	0.00%	0	0.00%	0	0.00%	0	0.00%
Exposure	0	0.00%	0	0.00%	1	0.52%	0	0.52%	0	0.85%
Equipment Malfunction	0	0.00%	0	0.00%	0	0.00%	0	0.00%	0	0.00%
LASD Return	0	0.00%	0	0.00%	0	0.00%	0	0.00%	0	4.27%
ACS Expired	0	0.00%	0	0.00%	0	0.00%	0	0.00%	2	16.24%
Total	0	0.00%	2	11.11%	30	15.71%	3	15.71%	4	38.46%



expertise in action™

Los Angeles County MTA Blue Line Approach Summary Report

Location 2003: EB Washington Boulevard @ Los Angeles Street



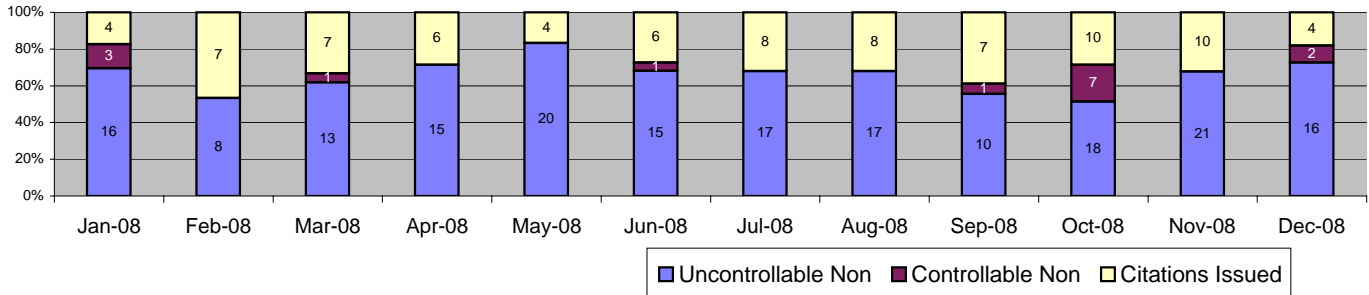
Events	Dec-08		3 Month Average		Year to Date Total		Year to Date Average		2007 Average	
	Quantity	% of Events	Quantity	% of Events	Quantity	% of Events	Quantity	% of Events	Quantity	% of Events
Non Violations	1117	87.54%	1101	85.70%	13955	86.37%	1163	86.37%	893	82.50%
Violations	159	12.46%	176	14.30%	2202	13.63%	184	13.63%	189	17.50%
Total Events	1276	100.00%	1277	100.00%	16157	100.00%	1346	100.00%	1082	100.00%
Violations	Quantity	% of Viol	Quantity	% of Viol	Quantity	% of Viol	Quantity	% of Viol	Quantity	% of Viol
Uncont. Non-Issued Viol	79	49.69%	85	48.58%	1279	58.08%	107	58.08%	60	31.51%
Cont. Non-Issued Viol	6	3.77%	10	5.69%	203	9.22%	17	9.22%	87	45.91%
Citations	74	46.54%	80	45.73%	720	32.70%	60	32.70%	43	22.58%
Av. Violation Speed	17.24		17.51		17.30		17.30		17.30	
Av. Issued Speed	17.04		17.58		17.24		17.24		17.49	
Av. Violation Sec.	9.82		9.86		10.98		10.98		15.04	
Av. Issued Sec.	3.95		4.92		4.23		4.23		2.89	
Cal. Days/Enforc. Days	31	31	30	30	366	366	31	31	30	30
Daily Citation Yield	2.39	2.39	2.65	2.65	1.97	1.97	1.97	1.97	1.41	1.41
Cit /Viol. Iss. Rate		47%		46%		33%		33%		23%
Prosecut. Iss. Rate		93%		89%		78%		78%		33%
Non - Violations	Dec-08		3 Month Average		Year to Date Total		Year to Date Average		2007 Average	
	Quantity	% of Events	Quantity	% of Events	Quantity	% of Events	Quantity	% of Events	Quantity	% of Events
Rear Axle Violation	4	0.31%	5	0.37%	57	0.35%	5	0.35%	2	0.20%
Gate Down - No Train	0	0.00%	0	0.00%	0	0.00%	0	0.00%	0	0.00%
Train Activation	5	0.39%	7	0.55%	65	0.40%	5	0.40%	1	0.05%
Right Turn	0	0.00%	0	0.00%	2	0.01%	0	0.01%	0	0.00%
No Violation Occurred	1108	86.83%	1089	85.33%	13831	85.60%	1153	85.60%	890	82.26%
Total Non Violations	1117	87.54%	1101	86.24%	13955	86.37%	1163	86.37%	893	82.50%
Non - Issued	Quantity	% of Viol	Quantity	% of Viol	Quantity	% of Viol	Quantity	% of Viol	Quantity	% of Viol
No Plate	21	13.21%	21	11.76%	237	10.76%	20	10.76%	17	9.07%
Out of State Plate	2	1.26%	2	1.14%	26	1.18%	2	1.18%	2	0.79%
Glare on Plate	0	0.00%	2	0.95%	5	0.23%	0	0.23%	1	0.57%
Illegible Plate	0	0.00%	0	0.19%	5	0.23%	0	0.23%	1	0.48%
Plate Obstructed	13	8.18%	12	6.83%	126	5.72%	11	5.72%	6	3.26%
Windshield Glare	9	5.66%	13	7.59%	276	12.53%	23	12.53%	8	3.96%
Driver Obstructed	1	0.63%	4	2.47%	66	3.00%	6	3.00%	1	0.66%
Car Obstructed	14	8.81%	14	7.78%	202	9.17%	17	9.17%	8	4.14%
Emergency Vehicle	6	3.77%	3	1.71%	38	1.73%	3	1.73%	1	0.75%
No DMV Match Found	13	8.18%	14	8.16%	182	8.27%	15	8.27%	13	6.60%
LASD Expired	0	0.00%	0	0.00%	116	5.27%	10	5.27%	2	1.01%
Other	0	0.00%	0	0.00%	0	0.00%	0	0.00%	0	0.22%
Total	79	49.69%	85	48.58%	1279	58.08%	107	58.08%	60	31.51%
Framing of Plate	4	2.52%	5	3.04%	59	2.68%	5	2.68%	2	0.92%
Focus / Clarity of Plate	2	1.26%	3	1.52%	52	2.36%	4	2.36%	9	4.80%
Dark Interior	0	0.00%	0	0.00%	12	0.54%	1	0.54%	2	0.88%
Framing of Driver	0	0.00%	0	0.00%	2	0.09%	0	0.09%	0	0.00%
Focus / Clarity of Driver	0	0.00%	0	0.00%	1	0.05%	0	0.05%	1	0.75%
Framing of Car	0	0.00%	0	0.19%	7	0.32%	1	0.32%	1	0.66%
Data Error	0	0.00%	0	0.00%	0	0.00%	0	0.00%	1	0.31%
Exposure	0	0.00%	0	0.00%	3	0.14%	0	0.14%	1	0.70%
Equipment Malfunction	0	0.00%	2	0.95%	66	3.00%	6	3.00%	45	23.90%
LASD Return	0	0.00%	0	0.00%	1	0.05%	0	0.05%	12	6.21%
ACS Expired	0	0.00%	0	0.00%	0	0.00%	0	0.00%	13	6.78%
Total	6	3.77%	10	5.69%	203	9.22%	17	9.22%	87	45.91%



expertise in action™

Los Angeles County MTA Blue Line Approach Summary Report

Location 2008: WB Washington Boulevard @ Los Angeles Street



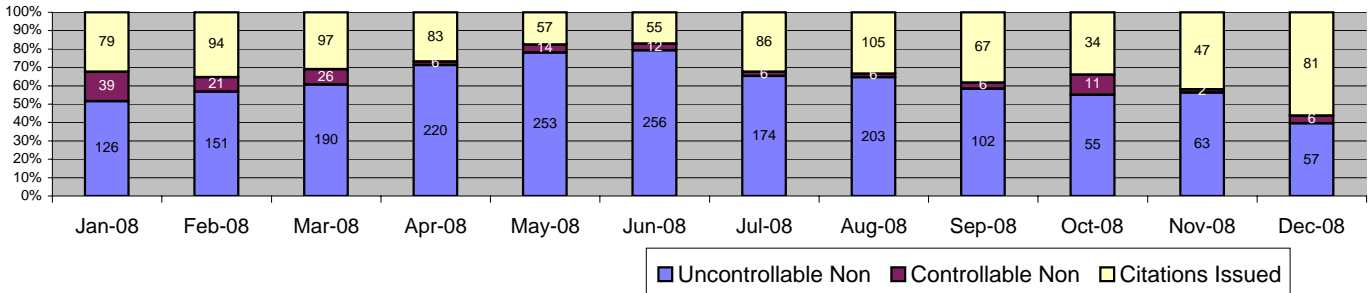
Events	Dec-08		3 Month Average		Year to Date Total		Year to Date Average		2007 Average	
	Quantity	% of Events	Quantity	% of Events	Quantity	% of Events	Quantity	% of Events	Quantity	% of Events
Non Violations	871	97.54%	807	97.78%	9767	97.19%	814	97.19%	474	96.57%
Violations	22	2.46%	28	2.22%	282	2.81%	24	2.81%	17	3.43%
Total Events	893	100.00%	835	100.00%	10049	100.00%	837	100.00%	491	100.00%
<i>Violations</i>	<i>Quantity</i>	<i>% of Viol</i>	<i>Quantity</i>	<i>% of Viol</i>	<i>Quantity</i>	<i>% of Viol</i>	<i>Quantity</i>	<i>% of Viol</i>	<i>Quantity</i>	<i>% of Viol</i>
Uncont. Non-Issued Viol	16	72.73%	16	58.33%	186	65.96%	16	65.96%	5	32.18%
Cont. Non-Issued Viol	2	9.09%	3	9.52%	15	5.32%	1	5.32%	8	44.55%
Citations	4	18.18%	9	32.14%	81	28.72%	7	28.72%	4	23.27%
Av. Violation Speed	18.64		19.96		19.65		19.65		19.68	
Av. Issued Speed	20.50		19.65		20.32		20.32		18.93	
Av. Violation Sec.	26.39		33.76		38.15		38.15		18.92	
Av. Issued Sec.	0.30		14.14		18.27		18.27		9.30	
Cal. Days/Enforc. Days	31	31	30	30	366	366	31	31	30	30
Daily Citation Yield	0.13	0.13	0.30	0.30	0.22	0.22	0.22	0.22	0.13	0.13
Cit /Viol. Iss. Rate	18%		32%		29%		29%		23%	
Prosecut. Iss. Rate	67%		77%		84%		84%		34%	
<i>Non - Violations</i>	<i>Quantity</i>	<i>% of Events</i>	<i>Quantity</i>	<i>% of Events</i>	<i>Quantity</i>	<i>% of Events</i>	<i>Quantity</i>	<i>% of Events</i>	<i>Quantity</i>	<i>% of Events</i>
Rear Axle Violation	0	0.00%	0	0.00%	0	0.00%	0	0.00%	0	0.02%
Gate Down - No Train	0	0.00%	0	0.00%	0	0.00%	0	0.00%	0	0.00%
Train Activation	12	1.34%	11	1.28%	103	1.02%	9	1.02%	2	0.49%
Right Turn	0	0.00%	0	0.00%	0	0.00%	0	0.00%	0	0.00%
No Violation Occurred	859	96.19%	796	95.37%	9664	96.17%	805	96.17%	471	96.06%
Total Non Violations	871	97.54%	807	96.65%	9767	97.19%	814	97.19%	474	96.57%
<i>Non - Issued</i>	<i>Quantity</i>	<i>% of Viol</i>	<i>Quantity</i>	<i>% of Viol</i>	<i>Quantity</i>	<i>% of Viol</i>	<i>Quantity</i>	<i>% of Viol</i>	<i>Quantity</i>	<i>% of Viol</i>
No Plate	2	9.09%	2	7.14%	27	9.57%	2	9.57%	1	4.95%
Out of State Plate	0	0.00%	0	0.00%	1	0.35%	0	0.35%	0	1.49%
Glare on Plate	0	0.00%	0	0.00%	0	0.00%	0	0.00%	0	0.00%
Illegible Plate	0	0.00%	0	0.00%	0	0.00%	0	0.00%	0	0.00%
Plate Obstructed	1	4.55%	0	1.19%	3	1.06%	0	1.06%	0	0.00%
Windshield Glare	0	0.00%	0	1.19%	10	3.55%	1	3.55%	0	0.50%
Driver Obstructed	3	13.64%	1	3.57%	19	6.74%	2	6.74%	0	2.48%
Car Obstructed	3	13.64%	7	26.19%	76	26.95%	6	26.95%	1	3.96%
Emergency Vehicle	3	13.64%	2	5.95%	22	7.80%	2	7.80%	1	4.46%
No DMV Match Found	4	18.18%	4	13.10%	25	8.87%	2	8.87%	2	11.88%
LASD Expired	0	0.00%	0	0.00%	3	1.06%	0	1.06%	0	1.98%
Other	0	0.00%	0	0.00%	0	0.00%	0	0.00%	0	0.50%
Total	16	72.73%	16	58.33%	186	65.96%	16	65.96%	5	32.18%
Framing of Plate	1	4.55%	0	0.00%	1	0.35%	0	0.35%	0	0.00%
Focus / Clarity of Plate	0	0.00%	0	0.00%	0	0.00%	0	0.00%	0	1.49%
Dark Interior	0	0.00%	0	1.19%	1	0.35%	0	0.35%	0	0.00%
Framing of Driver	1	4.55%	0	0.00%	2	0.71%	0	0.71%	0	0.00%
Focus / Clarity of Driver	0	0.00%	0	0.00%	0	0.00%	0	0.00%	0	0.50%
Framing of Car	0	0.00%	0	0.00%	0	0.00%	0	0.00%	0	0.50%
Data Error	0	0.00%	0	0.00%	1	0.35%	0	0.35%	0	0.00%
Exposure	0	0.00%	2	8.33%	8	2.84%	1	2.84%	4	23.76%
Equipment Malfunction	0	0.00%	0	0.00%	2	0.71%	0	0.71%	0	0.99%
LASD Return	0	0.00%	0	0.00%	0	0.00%	0	0.00%	2	9.41%
ACS Expired	0	0.00%	0	0.00%	0	0.00%	0	0.00%	1	7.92%
Total	2	9.09%	3	9.52%	15	5.32%	1	5.32%	8	44.55%



expertise in action™

Los Angeles County MTA Blue Line Approach Summary Report

Location 2017: EB Washington Boulevard @ San Pedro Street



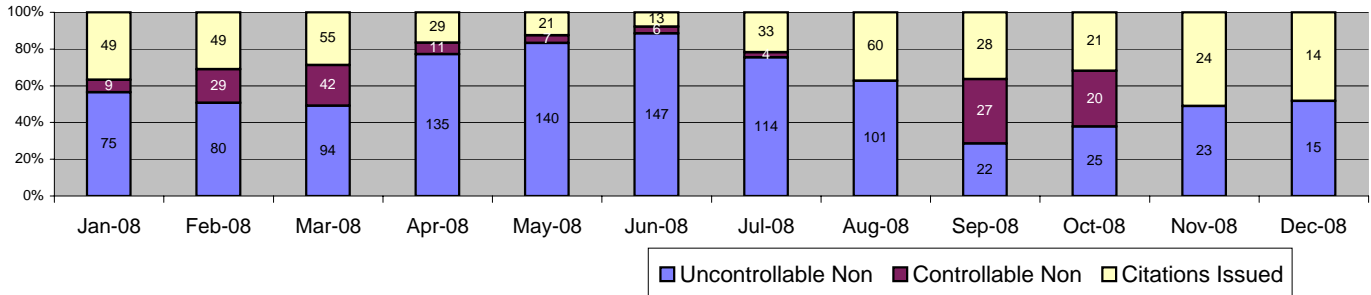
Events	Dec-08		3 Month Average		Year to Date Total		Year to Date Average		2007 Average	
	Quantity	% of Events	Quantity	% of Events	Quantity	% of Events	Quantity	% of Events	Quantity	% of Events
Non Violations	611	80.93%	551	58.33%	5394	65.11%	450	65.11%	320	50.77%
Violations	144	19.07%	129	41.67%	2890	34.89%	241	34.89%	310	49.23%
Total Events	755	100.00%	680	100.00%	8284	100.00%	690	100.00%	630	100.00%
<i>Violations</i>	<i>Quantity</i>	<i>% of Viol</i>	<i>Quantity</i>	<i>% of Viol</i>	<i>Quantity</i>	<i>% of Viol</i>	<i>Quantity</i>	<i>% of Viol</i>	<i>Quantity</i>	<i>% of Viol</i>
Uncont. Non-Issued Viol	57	39.58%	73	56.85%	1850	64.01%	154	64.01%	135	43.34%
Cont. Non-Issued Viol	6	4.17%	6	4.91%	155	5.36%	13	5.36%	84	27.18%
Citations	81	56.25%	49	38.24%	885	30.62%	74	30.62%	92	29.48%
Av. Violation Speed	17.57		17.46		17.59		17.59		17.57	
Av. Issued Speed	17.81		17.78		17.54		17.54		17.52	
Av. Violation Sec.	6.80		8.17		3.99		3.99		2.66	
Av. Issued Sec.	3.35		3.11		1.79		1.79		0.94	
Cal. Days/Enforc. Days	31	31	30	30	366	366	31	31	30	30
Daily Citation Yield	2.61	2.61	1.63	1.63	2.42	2.42	2.42	2.42	3.01	3.01
Cit /Viol. Iss. Rate	56%		38%		31%		31%		29%	
Prosecut. Iss. Rate	93%		89%		85%		85%		52%	
<i>Non - Violations</i>	<i>Quantity</i>	<i>% of Events</i>	<i>Quantity</i>	<i>% of Events</i>	<i>Quantity</i>	<i>% of Events</i>	<i>Quantity</i>	<i>% of Events</i>	<i>Quantity</i>	<i>% of Events</i>
Rear Axle Violation	0	0.00%	0	0.05%	7	0.08%	1	0.08%	0	0.01%
Gate Down - No Train	0	0.00%	0	0.00%	0	0.00%	0	0.00%	0	0.00%
Train Activation	5	0.66%	7	1.08%	41	0.49%	3	0.49%	0	0.05%
Right Turn	0	0.00%	0	0.00%	0	0.00%	0	0.00%	0	0.00%
No Violation Occurred	606	80.26%	543	79.89%	5346	64.53%	446	64.53%	320	50.70%
Total Non Violations	611	80.93%	551	81.02%	5394	65.11%	450	65.11%	320	50.77%
<i>Non - Issued</i>	<i>Quantity</i>	<i>% of Viol</i>	<i>Quantity</i>	<i>% of Viol</i>	<i>Quantity</i>	<i>% of Viol</i>	<i>Quantity</i>	<i>% of Viol</i>	<i>Quantity</i>	<i>% of Viol</i>
No Plate	10	6.94%	13	10.34%	335	11.59%	28	11.59%	28	9.10%
Out of State Plate	3	2.08%	1	1.03%	38	1.31%	3	1.31%	5	1.45%
Glare on Plate	0	0.00%	0	0.00%	1	0.03%	0	0.03%	1	0.19%
Illegible Plate	1	0.69%	0	0.26%	7	0.24%	1	0.24%	1	0.46%
Plate Obstructed	3	2.08%	3	2.58%	119	4.12%	10	4.12%	16	5.29%
Windshield Glare	6	4.17%	13	9.82%	391	13.53%	33	13.53%	20	6.42%
Driver Obstructed	5	3.47%	4	3.10%	110	3.81%	9	3.81%	4	1.21%
Car Obstructed	15	10.42%	17	13.44%	353	12.21%	29	12.21%	24	7.76%
Emergency Vehicle	2	1.39%	7	5.68%	67	2.32%	6	2.32%	3	0.86%
No DMV Match Found	12	8.33%	14	10.59%	259	8.96%	22	8.96%	30	9.77%
LASD Expired	0	0.00%	0	0.00%	170	5.88%	14	5.88%	2	0.78%
Other	0	0.00%	0	0.00%	0	0.00%	0	0.00%	0	0.05%
Total	57	39.58%	73	56.85%	1850	64.01%	154	64.01%	135	43.34%
Framing of Plate	3	2.08%	1	0.78%	25	0.87%	2	0.87%	3	1.02%
Focus / Clarity of Plate	0	0.00%	0	0.26%	10	0.35%	1	0.35%	5	1.48%
Dark Interior	0	0.00%	1	0.78%	34	1.18%	3	1.18%	3	0.91%
Framing of Driver	3	2.08%	2	1.81%	40	1.38%	3	1.38%	1	0.43%
Focus / Clarity of Driver	0	0.00%	0	0.00%	1	0.03%	0	0.03%	1	0.32%
Framing of Car	0	0.00%	0	0.26%	10	0.35%	1	0.35%	5	1.58%
Data Error	0	0.00%	0	0.00%	1	0.03%	0	0.03%	0	0.00%
Exposure	0	0.00%	0	0.00%	1	0.03%	0	0.03%	1	0.32%
Equipment Malfunction	0	0.00%	1	0.78%	27	0.93%	2	0.93%	17	5.37%
LASD Return	0	0.00%	0	0.00%	3	0.10%	0	0.10%	21	6.74%
ACS Expired	0	0.00%	0	0.26%	3	0.10%	0	0.10%	28	9.00%
Total	6	4.17%	6	4.91%	155	5.36%	13	5.36%	84	27.18%



expertise in action™

Los Angeles County MTA Blue Line Approach Summary Report

Location 2018: WB Washington Boulevard @ San Pedro Street



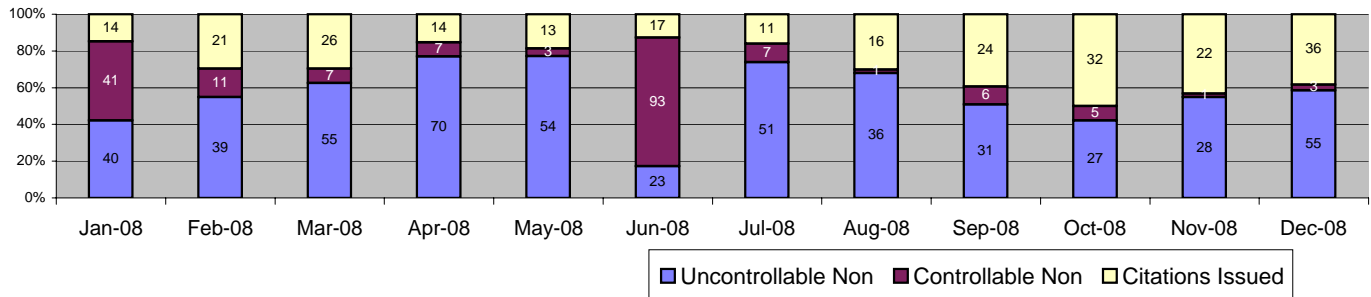
Events	Dec-08		3 Month Average		Year to Date Total		Year to Date Average		2007 Average	
	Quantity	% of Events	Quantity	% of Events	Quantity	% of Events	Quantity	% of Events	Quantity	% of Events
Non Violations	506	94.58%	433	74.67%	5696	78.91%	475	78.91%	553	77.57%
Violations	29	5.42%	63	25.33%	1522	21.09%	127	21.09%	160	22.43%
Total Events	535	100.00%	496	100.00%	7218	100.00%	602	100.00%	713	100.00%
<i>Violations</i>	<i>Quantity</i>	<i>% of Viol</i>	<i>Quantity</i>	<i>% of Viol</i>	<i>Quantity</i>	<i>% of Viol</i>	<i>Quantity</i>	<i>% of Viol</i>	<i>Quantity</i>	<i>% of Viol</i>
Uncont. Non-Issued Viol	15	51.72%	23	36.84%	971	63.80%	81	63.80%	72	45.10%
Cont. Non-Issued Viol	0	0.00%	16	24.74%	155	10.18%	13	10.18%	36	22.31%
Citations	14	48.28%	24	38.42%	396	26.02%	33	26.02%	52	32.59%
Av. Violation Speed	19.00		19.28		17.82		17.82		16.87	
Av. Issued Speed	20.07		19.02		17.64		17.64		16.88	
Av. Violation Sec.	22.75		27.32		12.54		12.54		5.46	
Av. Issued Sec.	14.68		6.78		5.85		5.85		3.28	
Cal. Days/Enforc. Days	31	31	30	30	366	366	31	31	30	30
Daily Citation Yield	0.45	0.45	0.80	0.80	1.08	1.08	1.08	1.08	1.71	1.71
Cit /Viol. Iss. Rate	48%		38%		26%		26%		33%	
Prosecut. Iss. Rate	100%		61%		72%		72%		59%	
<i>Non - Violations</i>	<i>Quantity</i>	<i>% of Events</i>	<i>Quantity</i>	<i>% of Events</i>	<i>Quantity</i>	<i>% of Events</i>	<i>Quantity</i>	<i>% of Events</i>	<i>Quantity</i>	<i>% of Events</i>
Rear Axle Violation	0	0.00%	0	0.00%	1	0.01%	0	0.01%	0	0.00%
Gate Down - No Train	0	0.00%	0	0.00%	0	0.00%	0	0.00%	0	0.00%
Train Activation	10	1.87%	8	1.55%	97	1.34%	8	1.34%	3	0.36%
Right Turn	0	0.00%	0	0.00%	0	0.00%	0	0.00%	0	0.00%
No Violation Occurred	496	92.71%	425	85.69%	5598	77.56%	467	77.56%	550	77.21%
Total Non Violations	506	94.58%	433	87.23%	5696	78.91%	475	78.91%	553	77.57%
<i>Non - Issued</i>	<i>Quantity</i>	<i>% of Viol</i>	<i>Quantity</i>	<i>% of Viol</i>	<i>Quantity</i>	<i>% of Viol</i>	<i>Quantity</i>	<i>% of Viol</i>	<i>Quantity</i>	<i>% of Viol</i>
No Plate	3	10.34%	3	5.26%	129	8.48%	11	8.48%	12	7.35%
Out of State Plate	3	10.34%	1	2.11%	17	1.12%	1	1.12%	1	0.73%
Glare on Plate	0	0.00%	0	0.00%	1	0.07%	0	0.07%	0	0.05%
Illegible Plate	0	0.00%	0	0.53%	3	0.20%	0	0.20%	1	0.36%
Plate Obstructed	0	0.00%	0	0.53%	16	1.05%	1	1.05%	4	2.19%
Windshield Glare	0	0.00%	0	0.53%	303	19.91%	25	19.91%	2	1.51%
Driver Obstructed	1	3.45%	1	2.11%	47	3.09%	4	3.09%	1	0.89%
Car Obstructed	3	10.34%	6	9.47%	170	11.17%	14	11.17%	13	8.39%
Emergency Vehicle	2	6.90%	3	5.26%	40	2.63%	3	2.63%	2	0.94%
No DMV Match Found	3	10.34%	7	11.05%	174	11.43%	15	11.43%	33	20.86%
LASD Expired	0	0.00%	0	0.00%	71	4.66%	6	4.66%	3	1.82%
Other	0	0.00%	0	0.00%	0	0.00%	0	0.00%	0	0.00%
Total	15	51.72%	23	36.84%	971	63.80%	81	63.80%	72	45.10%
Framing of Plate	0	0.00%	1	1.05%	15	0.99%	1	0.99%	2	1.09%
Focus / Clarity of Plate	0	0.00%	0	0.00%	2	0.13%	0	0.13%	1	0.89%
Dark Interior	0	0.00%	0	0.00%	64	4.20%	5	4.20%	1	0.68%
Framing of Driver	0	0.00%	0	0.00%	15	0.99%	1	0.99%	1	0.31%
Focus / Clarity of Driver	0	0.00%	0	0.00%	0	0.00%	0	0.00%	1	0.36%
Framing of Car	0	0.00%	0	0.53%	5	0.33%	0	0.33%	3	2.03%
Data Error	0	0.00%	0	0.00%	7	0.46%	1	0.46%	0	0.00%
Exposure	0	0.00%	0	0.00%	3	0.20%	0	0.20%	1	0.63%
Equipment Malfunction	0	0.00%	14	22.63%	43	2.83%	4	2.83%	2	1.30%
LASD Return	0	0.00%	0	0.53%	1	0.07%	0	0.07%	7	4.64%
ACS Expired	0	0.00%	0	0.00%	0	0.00%	0	0.00%	17	10.38%
Total	0	0.00%	16	24.74%	155	10.18%	13	10.18%	36	22.31%



expertise in action™

Los Angeles County MTA Blue Line Approach Summary Report

Location 2027: EB Washington Boulevard @ Broadway Street



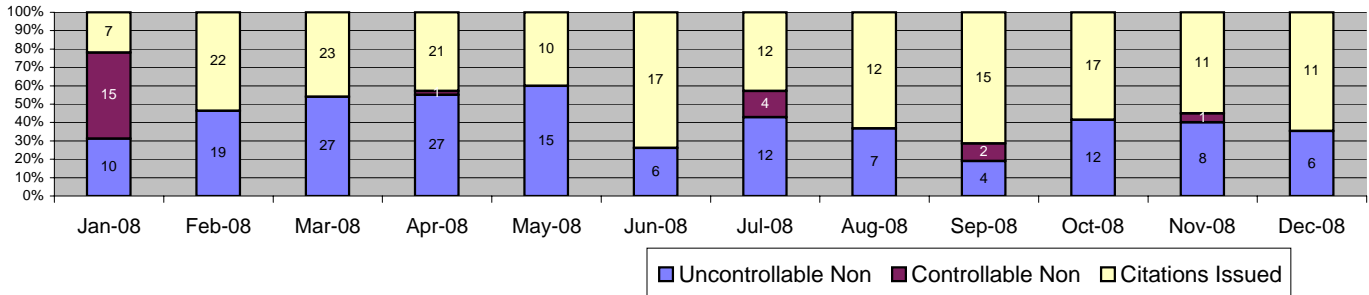
Events	Dec-08		3 Month Average		Year to Date Total		Year to Date Average		2007 Average	
	Quantity	% of Events	Quantity	% of Events	Quantity	% of Events	Quantity	% of Events	Quantity	% of Events
Non Violations	615	86.74%	622	91.65%	9420	90.93%	785	90.93%	629	91.62%
Violations	94	13.26%	59	8.35%	940	9.07%	78	9.07%	58	8.38%
Total Events	709	100.00%	680	100.00%	10360	100.00%	863	100.00%	686	100.00%
Violations	Quantity	% of Viol	Quantity	% of Viol	Quantity	% of Viol	Quantity	% of Viol	Quantity	% of Viol
Uncont. Non-Issued Viol	55	58.51%	29	48.86%	509	54.15%	42	54.15%	29	50.29%
Cont. Non-Issued Viol	3	3.19%	4	6.82%	185	19.68%	15	19.68%	13	22.46%
Citations	36	38.30%	26	44.32%	246	26.17%	21	26.17%	16	27.25%
Av. Violation Speed	19.00		17.49		17.28		17.28		16.73	
Av. Issued Speed	20.07		17.13		17.31		17.31		17.12	
Av. Violation Sec.	22.75		18.07		24.39		24.39		16.52	
Av. Issued Sec.	14.68		15.32		9.36		9.36		14.55	
Cal. Days/Enforc. Days	31	31	30	30	366	366	31	31	30	30
Daily Citation Yield	1.16	1.16	0.86	0.86	0.67	0.67	0.67	0.67	0.52	0.52
Cit /Viol. Iss. Rate		38%		44%		26%		26%		27%
Prosecut. Iss. Rate		92%		87%		57%		57%		55%
Non - Violations	Quantity	% of Events	Quantity	% of Events	Quantity	% of Events	Quantity	% of Events	Quantity	% of Events
Rear Axle Violation	0	0.00%	0	0.00%	1	0.01%	0	0.01%	0	0.00%
Gate Down - No Train	0	0.00%	0	0.00%	0	0.00%	0	0.00%	0	0.00%
Train Activation	6	0.85%	7	0.98%	133	1.28%	11	1.28%	1	0.21%
Right Turn	0	0.00%	0	0.00%	0	0.00%	0	0.00%	0	0.00%
No Violation Occurred	609	85.90%	615	90.40%	9286	89.63%	774	89.63%	628	91.42%
Total Non Violations	615	86.74%	622	91.38%	9420	90.93%	785	90.93%	629	91.62%
Non - Issued	Quantity	% of Viol	Quantity	% of Viol	Quantity	% of Viol	Quantity	% of Viol	Quantity	% of Viol
No Plate	7	7.45%	9	14.77%	72	7.66%	6	7.66%	6	10.29%
Out of State Plate	1	1.06%	1	1.14%	13	1.38%	1	1.38%	0	0.58%
Glare on Plate	0	0.00%	0	0.57%	1	0.11%	0	0.11%	0	0.00%
Illegible Plate	0	0.00%	0	0.00%	0	0.00%	0	0.00%	0	0.29%
Plate Obstructed	3	3.19%	3	4.55%	41	4.36%	3	4.36%	2	4.20%
Windshield Glare	0	0.00%	0	0.00%	20	2.13%	2	2.13%	1	1.74%
Driver Obstructed	4	4.26%	2	2.84%	25	2.66%	2	2.66%	1	1.30%
Car Obstructed	27	28.72%	7	12.50%	208	22.13%	17	22.13%	8	13.19%
Emergency Vehicle	3	3.19%	1	1.70%	23	2.45%	2	2.45%	2	2.75%
No DMV Match Found	10	10.64%	6	10.80%	78	8.30%	7	8.30%	8	14.20%
LASD Expired	0	0.00%	0	0.00%	28	2.98%	2	2.98%	1	1.74%
Other	0	0.00%	0	0.00%	0	0.00%	0	0.00%	0	0.00%
Total	55	58.51%	29	48.86%	509	54.15%	42	54.15%	29	50.29%
Framing of Plate	3	3.19%	4	6.25%	43	4.57%	4	4.57%	3	4.49%
Focus / Clarity of Plate	0	0.00%	0	0.00%	7	0.74%	1	0.74%	2	2.75%
Dark Interior	0	0.00%	0	0.00%	1	0.11%	0	0.11%	0	0.00%
Framing of Driver	0	0.00%	0	0.57%	3	0.32%	0	0.32%	0	0.00%
Focus / Clarity of Driver	0	0.00%	0	0.00%	0	0.00%	0	0.00%	0	0.00%
Framing of Car	0	0.00%	0	0.00%	0	0.00%	0	0.00%	0	0.58%
Data Error	0	0.00%	0	0.00%	4	0.43%	0	0.43%	0	0.14%
Exposure	0	0.00%	0	0.00%	4	0.43%	0	0.43%	1	1.74%
Equipment Malfunction	0	0.00%	0	0.00%	123	13.09%	10	13.09%	0	0.14%
LASD Return	0	0.00%	0	0.00%	0	0.00%	0	0.00%	2	3.91%
ACS Expired	0	0.00%	0	0.00%	0	0.00%	0	0.00%	5	8.70%
Total	3	3.19%	4	6.82%	185	19.68%	15	19.68%	13	22.46%



expertise in action™

Los Angeles County MTA Blue Line Approach Summary Report

Location 2036: SB Flower Street @ 18th Street



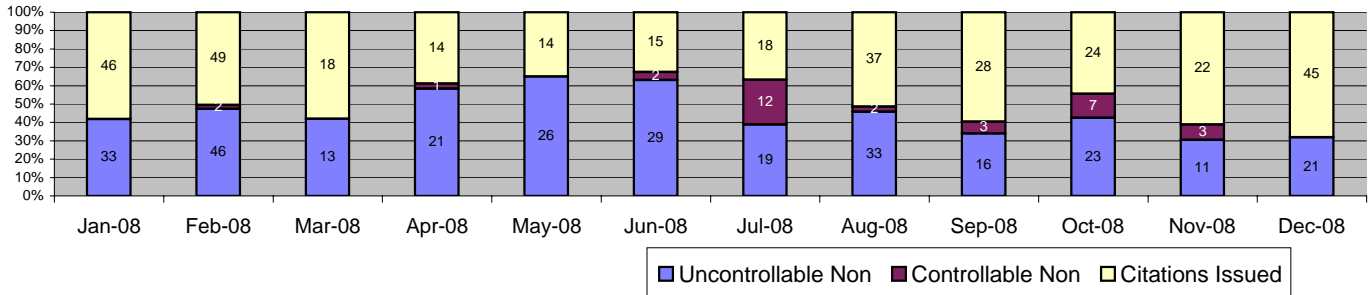
Events	Dec-08		3 Month Average		Year to Date Total		Year to Date Average		2007 Average	
	Quantity	% of Events	Quantity	% of Events	Quantity	% of Events	Quantity	% of Events	Quantity	% of Events
Non Violations	94	84.68%	123	94.24%	4877	93.23%	406	93.23%	121	73.64%
Violations	17	15.32%	23	5.76%	354	6.77%	30	6.77%	43	26.36%
Total Events	111	100.00%	147	100.00%	5231	100.00%	436	100.00%	164	100.00%
<i>Violations</i>	<i>Quantity</i>	<i>% of Viol</i>	<i>Quantity</i>	<i>% of Viol</i>	<i>Quantity</i>	<i>% of Viol</i>	<i>Quantity</i>	<i>% of Viol</i>	<i>Quantity</i>	<i>% of Viol</i>
Uncont. Non-Issued Viol	6	35.29%	8	34.29%	153	43.22%	13	43.22%	13	30.89%
Cont. Non-Issued Viol	0	0.00%	1	4.29%	23	6.50%	2	6.50%	12	27.61%
Citations	11	64.71%	14	61.43%	178	50.28%	15	50.28%	18	41.51%
Av. Violation Speed	17.71		17.53		17.29		17.29		17.27	
Av. Issued Speed	18.64		17.07		18.19		18.19		17.13	
Av. Violation Sec.	19.20		15.75		18.81		18.81		15.49	
Av. Issued Sec.	13.60		14.85		13.36		13.36		13.99	
Cal. Days/Enforc. Days	31	31	30	30	366	366	31	31	30	30
Daily Citation Yield	0.35	0.35	0.47	0.47	0.49	0.49	0.49	0.49	0.60	0.60
Cit /Viol. Iss. Rate	65%		61%		50%		50%		42%	
Prosecut. Iss. Rate	100%		93%		89%		89%		60%	
<i>Non - Violations</i>	<i>Quantity</i>	<i>% of Events</i>	<i>Quantity</i>	<i>% of Events</i>	<i>Quantity</i>	<i>% of Events</i>	<i>Quantity</i>	<i>% of Events</i>	<i>Quantity</i>	<i>% of Events</i>
Rear Axle Violation	0	0.00%	0	0.00%	6	0.11%	1	0.11%	0	0.00%
Gate Down - No Train	0	0.00%	0	0.00%	0	0.00%	0	0.00%	0	0.00%
Train Activation	0	0.00%	2	1.59%	973	18.60%	81	18.60%	1	0.36%
Right Turn	0	0.00%	0	0.00%	0	0.00%	0	0.00%	0	0.00%
No Violation Occurred	94	84.68%	121	82.50%	3898	74.52%	325	74.52%	120	73.28%
Total Non Violations	94	84.68%	123	84.09%	4877	93.23%	406	93.23%	121	73.64%
<i>Non - Issued</i>	<i>Quantity</i>	<i>% of Viol</i>	<i>Quantity</i>	<i>% of Viol</i>	<i>Quantity</i>	<i>% of Viol</i>	<i>Quantity</i>	<i>% of Viol</i>	<i>Quantity</i>	<i>% of Viol</i>
No Plate	1	5.88%	3	14.29%	41	11.58%	3	11.58%	5	12.36%
Out of State Plate	0	0.00%	1	2.86%	3	0.85%	0	0.85%	0	0.97%
Glare on Plate	0	0.00%	0	0.00%	0	0.00%	0	0.00%	0	0.39%
Illegible Plate	0	0.00%	0	0.00%	1	0.28%	0	0.28%	0	0.39%
Plate Obstructed	0	0.00%	0	1.43%	2	0.56%	0	0.56%	0	0.39%
Windshield Glare	0	0.00%	0	0.00%	1	0.28%	0	0.28%	0	0.58%
Driver Obstructed	3	17.65%	1	5.71%	19	5.37%	2	5.37%	0	0.97%
Car Obstructed	0	0.00%	0	1.43%	28	7.91%	2	7.91%	0	0.58%
Emergency Vehicle	1	5.88%	0	1.43%	12	3.39%	1	3.39%	1	2.32%
No DMV Match Found	1	5.88%	2	7.14%	22	6.21%	2	6.21%	5	10.81%
LASD Expired	0	0.00%	0	0.00%	24	6.78%	2	6.78%	1	1.16%
Other	0	0.00%	0	0.00%	0	0.00%	0	0.00%	0	0.00%
Total	6	35.29%	8	34.29%	153	43.22%	13	43.22%	13	30.89%
Framing of Plate	0	0.00%	0	0.00%	0	0.00%	0	0.00%	0	0.00%
Focus / Clarity of Plate	0	0.00%	0	1.43%	1	0.28%	0	0.28%	0	0.19%
Dark Interior	0	0.00%	0	0.00%	0	0.00%	0	0.00%	0	0.77%
Framing of Driver	0	0.00%	0	0.00%	0	0.00%	0	0.00%	0	0.39%
Focus / Clarity of Driver	0	0.00%	0	0.00%	0	0.00%	0	0.00%	0	0.00%
Framing of Car	0	0.00%	0	0.00%	1	0.28%	0	0.28%	0	0.77%
Data Error	0	0.00%	0	0.00%	13	3.67%	1	3.67%	0	0.19%
Exposure	0	0.00%	0	0.00%	5	1.41%	0	1.41%	1	1.93%
Equipment Malfunction	0	0.00%	0	1.43%	2	0.56%	0	0.56%	2	4.63%
LASD Return	0	0.00%	0	0.00%	0	0.00%	0	0.00%	4	8.11%
ACS Expired	0	0.00%	0	1.43%	1	0.28%	0	0.28%	5	10.62%
Total	0	0.00%	1	4.29%	23	6.50%	2	6.50%	12	27.61%



expertise in action™

Los Angeles County MTA Blue Line Approach Summary Report

Location 2046: SB Flower to EB 10 Fwy On Ramp

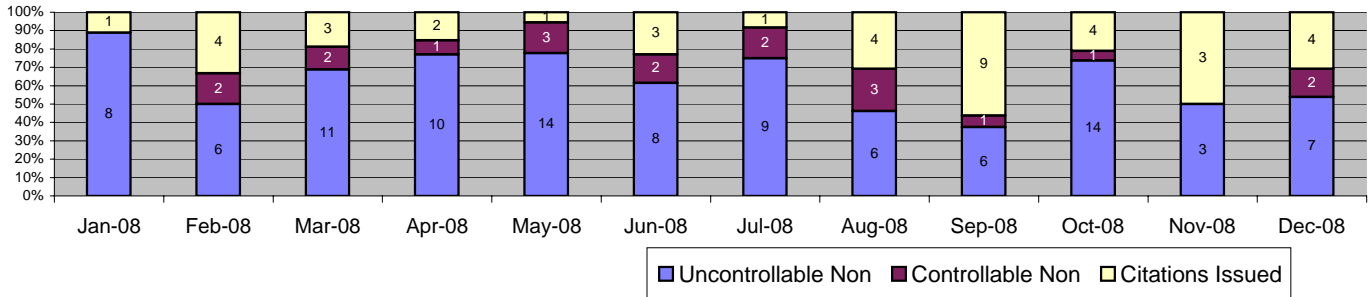


Events	Dec-08		3 Month Average		Year to Date Total		Year to Date Average		2007 Average	
	Quantity	% of Events	Quantity	% of Events	Quantity	% of Events	Quantity	% of Events	Quantity	% of Events
Non Violations	353	84.25%	243	88.00%	3707	85.02%	309	85.02%	600	92.43%
Violations	66	15.75%	46	12.00%	653	14.98%	54	14.98%	49	7.57%
Total Events	419	100.00%	289	100.00%	4360	100.00%	363	100.00%	650	100.00%
<i>Violations</i>	<i>Quantity</i>	<i>% of Viol</i>	<i>Quantity</i>	<i>% of Viol</i>	<i>Quantity</i>	<i>% of Viol</i>	<i>Quantity</i>	<i>% of Viol</i>	<i>Quantity</i>	<i>% of Viol</i>
Uncont. Non-Issued Viol	21	31.82%	17	36.50%	291	44.56%	24	44.56%	23	46.75%
Cont. Non-Issued Viol	0	0.00%	4	9.49%	32	4.90%	3	4.90%	1	2.85%
Citations	45	68.18%	25	54.01%	330	50.54%	28	50.54%	25	50.41%
Av. Violation Speed	20.35		20.29		20.39		20.39		20.81	
Av. Issued Speed	20.31		20.27		20.40		20.40		11.67	
Av. Violation Sec.	7.75		6.08		6.78		6.78		9.32	
Av. Issued Sec.	6.14		3.79		4.51		4.51		3.11	
Cal. Days/Enforc. Days	31	31	30	30	366	366	31	31	31	27
Daily Citation Yield	1.45	1.45	0.81	0.81	0.90	0.90	0.90	0.90	0.81	0.91
Cit /Viol. Iss. Rate	68%		54%		51%		51%		50%	
Prosecut. Iss. Rate	100%		85%		91%		91%		95%	
<i>Non - Violations</i>	<i>Quantity</i>	<i>% of Events</i>	<i>Quantity</i>	<i>% of Events</i>	<i>Quantity</i>	<i>% of Events</i>	<i>Quantity</i>	<i>% of Events</i>	<i>Quantity</i>	<i>% of Events</i>
Rear Axle Violation	0	0.00%	0	0.00%	3	0.07%	0	0.07%	0	0.00%
Gate Down - No Train	0	0.00%	0	0.00%	0	0.00%	0	0.00%	0	0.00%
Train Activation	13	3.10%	9	3.23%	132	3.03%	11	3.03%	16	2.49%
Right Turn	0	0.00%	0	0.00%	0	0.00%	0	0.00%	0	0.00%
No Violation Occurred	340	81.15%	234	80.95%	3572	81.93%	298	81.93%	584	89.93%
Total Non Violations	353	84.25%	243	84.18%	3707	85.02%	309	85.02%	600	92.43%
<i>Non - Issued</i>	<i>Quantity</i>	<i>% of Viol</i>	<i>Quantity</i>	<i>% of Viol</i>	<i>Quantity</i>	<i>% of Viol</i>	<i>Quantity</i>	<i>% of Viol</i>	<i>Quantity</i>	<i>% of Viol</i>
No Plate	10	15.15%	6	13.14%	107	16.39%	9	16.39%	10	20.33%
Out of State Plate	0	0.00%	1	1.46%	9	1.38%	1	1.38%	1	1.22%
Glare on Plate	0	0.00%	0	0.00%	0	0.00%	0	0.00%	0	0.00%
Illegible Plate	0	0.00%	0	0.00%	0	0.00%	0	0.00%	0	0.81%
Plate Obstructed	1	1.52%	1	1.46%	5	0.77%	0	0.77%	0	0.81%
Windshield Glare	1	1.52%	4	8.03%	40	6.13%	3	6.13%	0	0.00%
Driver Obstructed	2	3.03%	2	4.38%	28	4.29%	2	4.29%	0	0.41%
Car Obstructed	2	3.03%	1	1.46%	12	1.84%	1	1.84%	1	2.44%
Emergency Vehicle	0	0.00%	1	1.46%	6	0.92%	1	0.92%	0	0.81%
No DMV Match Found	5	7.58%	2	5.11%	48	7.35%	4	7.35%	5	9.76%
LASD Expired	0	0.00%	0	0.00%	36	5.51%	3	5.51%	5	10.16%
Other	0	0.00%	0	0.00%	0	0.00%	0	0.00%	0	0.00%
Total	21	31.82%	17	36.50%	291	44.56%	24	44.56%	23	46.75%
Framing of Plate	0	0.00%	0	0.00%	0	0.00%	0	0.00%	0	0.00%
Focus / Clarity of Plate	0	0.00%	0	0.73%	2	0.31%	0	0.31%	0	0.00%
Dark Interior	0	0.00%	0	0.00%	1	0.15%	0	0.15%	0	0.00%
Framing of Driver	0	0.00%	0	0.00%	0	0.00%	0	0.00%	0	0.00%
Focus / Clarity of Driver	0	0.00%	0	0.00%	0	0.00%	0	0.00%	0	0.00%
Framing of Car	0	0.00%	0	0.00%	1	0.15%	0	0.15%	0	0.00%
Data Error	0	0.00%	0	0.00%	0	0.00%	0	0.00%	0	0.00%
Exposure	0	0.00%	0	0.00%	1	0.15%	0	0.15%	0	0.81%
Equipment Malfunction	0	0.00%	4	8.76%	26	3.98%	2	3.98%	0	0.00%
LASD Return	0	0.00%	0	0.00%	0	0.00%	0	0.00%	0	0.81%
ACS Expired	0	0.00%	0	0.00%	1	0.15%	0	0.15%	1	1.22%
Total	0	0.00%	4	9.49%	32	4.90%	3	4.90%	1	2.85%



expertise in action™

Los Angeles County MTA Blue Line Approach Summary Report Location 2054: WB Venice @ Flower

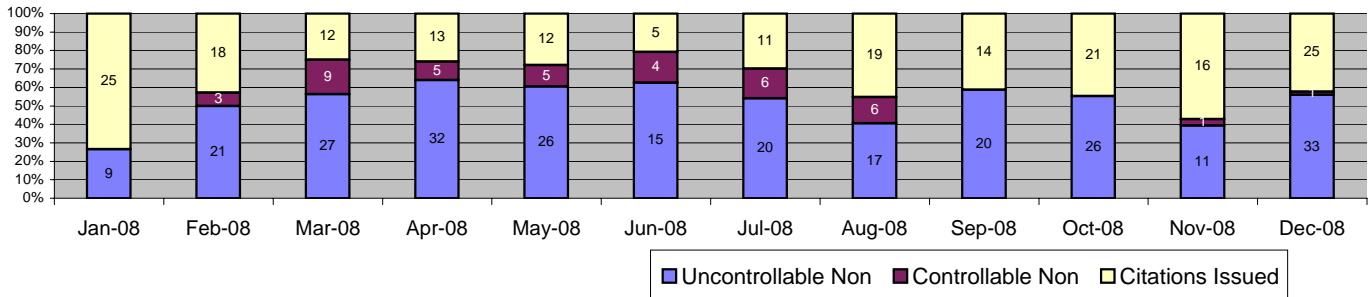


Events	Dec-08		3 Month Average		Year to Date Total		Year to Date Average		2007 Average	
	Quantity	% of Events	Quantity	% of Events	Quantity	% of Events	Quantity	% of Events	Quantity	% of Events
Non Violations	165	92.70%	145	91.40%	1704	91.42%	142	91.42%	118	89.87%
Violations	13	7.30%	14	8.60%	160	8.58%	13	8.58%	13	10.13%
Total Events	178	100.00%	159	100.00%	1864	100.00%	155	100.00%	132	100.00%
<i>Violations</i>	<i>Quantity</i>	<i>% of Viol</i>	<i>Quantity</i>	<i>% of Viol</i>	<i>Quantity</i>	<i>% of Viol</i>	<i>Quantity</i>	<i>% of Viol</i>	<i>Quantity</i>	<i>% of Viol</i>
Uncont. Non-Issued Viol	7	53.85%	8	56.10%	102	63.75%	9	63.75%	6	47.50%
Cont. Non-Issued Viol	2	15.38%	1	4.88%	19	11.88%	2	11.88%	3	24.38%
Citations	4	30.77%	5	39.02%	39	24.38%	3	24.38%	4	28.13%
Av. Violation Speed	23.08		22.40		22.31		22.31		23.11	
Av. Issued Speed	28.75		23.02		23.65		23.65		25.49	
Av. Violation Sec.	16.94		13.73		13.35		13.35		10.97	
Av. Issued Sec.	7.42		10.48		5.12		5.12		8.17	
Cal. Days/Enforc. Days	31	31	30	30	366	366	31	31	30	30
Daily Citation Yield	0.13	0.13	0.18	0.18	0.11	0.11	0.11	0.11	0.12	0.12
Cit /Viol. Iss. Rate		31%		39%		24%		24%		28%
Prosecut. Iss. Rate		67%		89%		67%		67%		54%
<i>Non - Violations</i>	<i>Quantity</i>	<i>% of Events</i>	<i>Quantity</i>	<i>% of Events</i>	<i>Quantity</i>	<i>% of Events</i>	<i>Quantity</i>	<i>% of Events</i>	<i>Quantity</i>	<i>% of Events</i>
Rear Axle Violation	0	0.00%	0	0.21%	1	0.05%	0	0.05%	0	0.13%
Gate Down - No Train	0	0.00%	0	0.00%	0	0.00%	0	0.00%	0	0.00%
Train Activation	1	0.56%	0	0.21%	5	0.27%	0	0.27%	0	0.13%
Right Turn	0	0.00%	0	0.00%	0	0.00%	0	0.00%	0	0.06%
No Violation Occurred	164	92.13%	144	90.97%	1698	91.09%	142	91.09%	118	89.55%
Total Non Violations	165	92.70%	145	91.39%	1704	91.42%	142	91.42%	118	89.87%
<i>Non - Issued</i>	<i>Quantity</i>	<i>% of Viol</i>	<i>Quantity</i>	<i>% of Viol</i>	<i>Quantity</i>	<i>% of Viol</i>	<i>Quantity</i>	<i>% of Viol</i>	<i>Quantity</i>	<i>% of Viol</i>
No Plate	1	7.69%	1	7.32%	21	13.13%	2	13.13%	2	11.88%
Out of State Plate	0	0.00%	0	2.44%	3	1.88%	0	1.88%	0	1.25%
Glare on Plate	0	0.00%	0	0.00%	0	0.00%	0	0.00%	0	0.00%
Illegible Plate	0	0.00%	0	0.00%	0	0.00%	0	0.00%	0	0.00%
Plate Obstructed	0	0.00%	0	0.00%	2	1.25%	0	1.25%	0	0.63%
Windshield Glare	0	0.00%	2	17.07%	19	11.88%	2	11.88%	0	2.50%
Driver Obstructed	0	0.00%	0	0.00%	1	0.63%	0	0.63%	0	0.00%
Car Obstructed	5	38.46%	1	4.88%	20	12.50%	2	12.50%	1	6.88%
Emergency Vehicle	1	7.69%	3	19.51%	29	18.13%	2	18.13%	2	11.25%
No DMV Match Found	0	0.00%	1	4.88%	6	3.75%	1	3.75%	1	8.75%
LASD Expired	0	0.00%	0	0.00%	1	0.63%	0	0.63%	1	4.38%
Other	0	0.00%	0	0.00%	0	0.00%	0	0.00%	0	0.00%
Total	7	53.85%	8	56.10%	102	63.75%	9	63.75%	6	47.50%
Framing of Plate	0	0.00%	0	0.00%	1	0.63%	0	0.63%	0	0.63%
Focus / Clarity of Plate	0	0.00%	0	0.00%	0	0.00%	0	0.00%	0	1.88%
Dark Interior	2	15.38%	0	2.44%	11	6.88%	1	6.88%	0	0.63%
Framing of Driver	0	0.00%	0	0.00%	3	1.88%	0	1.88%	0	0.63%
Focus / Clarity of Driver	0	0.00%	0	0.00%	0	0.00%	0	0.00%	0	0.63%
Framing of Car	0	0.00%	0	2.44%	3	1.88%	0	1.88%	1	6.88%
Data Error	0	0.00%	0	0.00%	0	0.00%	0	0.00%	0	0.00%
Exposure	0	0.00%	0	0.00%	1	0.63%	0	0.63%	0	0.63%
Equipment Malfunction	0	0.00%	0	0.00%	0	0.00%	0	0.00%	0	0.63%
LASD Return	0	0.00%	0	0.00%	0	0.00%	0	0.00%	0	1.25%
ACS Expired	0	0.00%	0	0.00%	0	0.00%	0	0.00%	1	10.63%
Total	2	15.38%	1	4.88%	19	11.88%	2	11.88%	3	24.38%



expertise in action™

Los Angeles County MTA Blue Line Approach Summary Report Location 2056: SB Venice @ Flower



Events	Dec-08		3 Month Average		Year to Date Total		Year to Date Average		2007 Average	
	Quantity	% of Events	Quantity	% of Events	Quantity	% of Events	Quantity	% of Events	Quantity	% of Events
Non Violations	195	76.77%	178	79.39%	2098	81.13%	175	81.13%	234	82.44%
Violations	59	23.23%	36	20.61%	488	18.87%	41	18.87%	50	17.56%
Total Events	254	100.00%	215	100.00%	2586	100.00%	216	100.00%	283	100.00%
<i>Violations</i>	<i>Quantity</i>	<i>% of Viol</i>	<i>Quantity</i>	<i>% of Viol</i>	<i>Quantity</i>	<i>% of Viol</i>	<i>Quantity</i>	<i>% of Viol</i>	<i>Quantity</i>	<i>% of Viol</i>
Uncont. Non-Issued Viol	33	55.93%	19	52.29%	257	52.66%	21	52.66%	18	36.35%
Cont. Non-Issued Viol	1	1.69%	0	0.92%	40	8.20%	3	8.20%	9	17.76%
Citations	25	42.37%	17	46.79%	191	39.14%	16	39.14%	23	45.90%
Av. Violation Speed	17.66		18.19		17.91		17.91		17.59	
Av. Issued Speed	18.04		17.79		17.60		17.60		17.43	
Av. Violation Sec.	38.08		38.17		38.77		38.77		36.97	
Av. Issued Sec.	36.50		31.78		34.00		34.00		36.78	
Cal. Days/Enforc. Days	31	31	30	30	366	366	31	31	30	30
Daily Citation Yield	0.81	0.81	0.56	0.56	0.52	0.52	0.52	0.52	0.75	0.75
Cit /Viol. Iss. Rate		42%		47%		39%		39%		46%
Prosecut. Iss. Rate		96%		98%		83%		83%		72%
<i>Non - Violations</i>	<i>Quantity</i>	<i>% of Events</i>	<i>Quantity</i>	<i>% of Events</i>	<i>Quantity</i>	<i>% of Events</i>	<i>Quantity</i>	<i>% of Events</i>	<i>Quantity</i>	<i>% of Events</i>
Rear Axle Violation	0	0.00%	0	0.00%	2	0.08%	0	0.08%	0	0.09%
Gate Down - No Train	0	0.00%	0	0.00%	0	0.00%	0	0.00%	0	0.00%
Train Activation	4	1.57%	5	2.17%	44	1.70%	4	1.70%	1	0.26%
Right Turn	0	0.00%	0	0.00%	0	0.00%	0	0.00%	0	0.00%
No Violation Occurred	191	75.20%	174	80.90%	2052	79.35%	171	79.35%	233	82.09%
Total Non Violations	195	76.77%	178	83.07%	2098	81.13%	175	81.13%	234	82.44%
<i>Non - Issued</i>	<i>Quantity</i>	<i>% of Viol</i>	<i>Quantity</i>	<i>% of Viol</i>	<i>Quantity</i>	<i>% of Viol</i>	<i>Quantity</i>	<i>% of Viol</i>	<i>Quantity</i>	<i>% of Viol</i>
No Plate	7	11.86%	4	11.01%	65	13.32%	5	13.32%	7	14.41%
Out of State Plate	2	3.39%	1	3.67%	11	2.25%	1	2.25%	1	1.34%
Glare on Plate	0	0.00%	0	0.00%	0	0.00%	0	0.00%	0	0.00%
Illegible Plate	0	0.00%	0	0.00%	3	0.61%	0	0.61%	0	0.50%
Plate Obstructed	0	0.00%	0	0.00%	0	0.00%	0	0.00%	0	0.34%
Windshield Glare	6	10.17%	1	3.67%	28	5.74%	2	5.74%	0	0.00%
Driver Obstructed	7	11.86%	5	13.76%	60	12.30%	5	12.30%	2	3.52%
Car Obstructed	1	1.69%	1	3.67%	14	2.87%	1	2.87%	1	1.34%
Emergency Vehicle	2	3.39%	3	7.34%	18	3.69%	2	3.69%	1	2.85%
No DMV Match Found	8	13.56%	3	9.17%	33	6.76%	3	6.76%	4	8.88%
LASD Expired	0	0.00%	0	0.00%	25	5.12%	2	5.12%	2	3.02%
Other	0	0.00%	0	0.00%	0	0.00%	0	0.00%	0	0.17%
Total	33	55.93%	19	52.29%	257	52.66%	21	52.66%	18	36.35%
Framing of Plate	0	0.00%	0	0.00%	1	0.20%	0	0.20%	0	0.34%
Focus / Clarity of Plate	0	0.00%	0	0.00%	0	0.00%	0	0.00%	0	0.34%
Dark Interior	1	1.69%	0	0.00%	14	2.87%	1	2.87%	0	0.17%
Framing of Driver	0	0.00%	0	0.92%	1	0.20%	0	0.20%	0	0.00%
Focus / Clarity of Driver	0	0.00%	0	0.00%	0	0.00%	0	0.00%	0	0.00%
Framing of Car	0	0.00%	0	0.00%	0	0.00%	0	0.00%	0	0.34%
Data Error	0	0.00%	0	0.00%	0	0.00%	0	0.00%	0	0.00%
Exposure	0	0.00%	0	0.00%	2	0.41%	0	0.41%	0	0.17%
Equipment Malfunction	0	0.00%	0	0.00%	19	3.89%	2	3.89%	2	3.02%
LASD Return	0	0.00%	0	0.00%	3	0.61%	0	0.61%	1	2.35%
ACS Expired	0	0.00%	0	0.00%	0	0.00%	0	0.00%	6	11.06%
Total	1	1.69%	0	0.92%	40	8.20%	3	8.20%	9	17.76%



Calls For Information

Reason for Call	Dec-08	3 Month Average	Year to Date Average	Year to Date Total	2007 Average
<i>Appointment</i>	11	6	6	75	11
<i>Bail</i>	16	16	12	144	15
<i>Complaint</i>	0	0	0	0	0
<i>Contest Violation</i>	8	12	10	125	12
<i>Courtesy Notice</i>	0	0	0	0	0
<i>Explain Citation</i>	1	2	3	30	3
<i>Explain Court</i>	0	0	0	1	1
<i>Explain the Project</i>	0	0	0	0	0
<i>Extension</i>	10	6	6	75	8
<i>Other</i>	0	0	0	1	0
<i>Affidavit of Non-Liability</i>	15	19	19	229	28
<i>Affidavit of Non-Liability Status</i>	1	1	1	14	3
<i>Traffic School</i>	0	3	5	58	8
Total Calls	62	65	63	752	89
Appointments Scheduled	6	7	7	87	11
Affidavits of Non-Liability Processed	64	59	61	732	78
Court Packets Prepared	30	44	42	509	56



expertise in action™

Los Angeles County MTA Blue Line Dialy Citation Yield - By Location December 2008

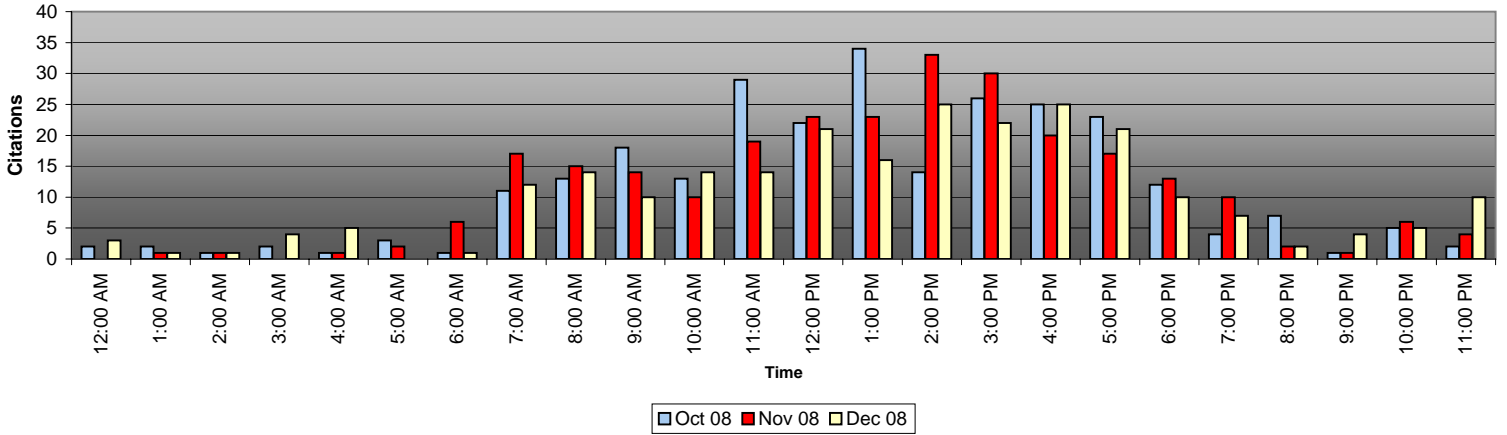
DATE	322	391	421	451	821	822	841	981	982	1051	1052	1081	1082	2003	2008	2017	2018	2027	2036	2046	2054	2056	Total	
12/01/2008							1			1				5			1	1	1				10	
12/02/2008							1		2			1		6		6		2	1	1			2	22
12/03/2008									3		1					3	1	1	1	2			12	
12/04/2008			1		1			1	1					2		5				4		2	17	
12/05/2008														3	2	4			5		4		18	
12/06/2008														3		6		2	1	5	1		18	
12/07/2008							1												2	1			4	
12/08/2008													1	5			1						1	8
12/09/2008										1						4							2	7
12/10/2008											1			2		7		6	1	3				20
12/11/2008							2		1							3	1	2	2	2	1		1	14
12/12/2008												1		6		2	1	1		1			3	15
12/13/2008									1						1	5		1		3				11
12/14/2008											2			5						1				8
12/15/2008																3		1		3				7
12/16/2008			1				1			2			1	2		2		2		2				13
12/17/2008									1			1				3								5
12/18/2008			1				1		1					4		2		1					1	11
12/19/2008					1								2	5		4	1	4		2			1	20
12/20/2008			2											2		2	1		1				4	12
12/21/2008										1				1			2	1	1		1		1	7
12/22/2008												1	1			6		1		1		1		11
12/23/2008									1					6	1		2						1	11
12/24/2008					1	3							2	5		5	1	3		1				21
12/25/2008																							2	2
12/26/2008							1		1		1			4		7			1	1			1	17
12/27/2008																2				2			3	7
12/28/2008																				2			1	3
12/29/2008														3			2			2				7
12/30/2008										1				5								1		7
12/31/2008						3			1									2		1				7
Totals	0	0	5	0	3	6	8	1	13	4	7	6	5	74	4	81	14	36	11	45	4	25	352	

322 = WB 20th @ Long Beach Blvd.
 391 = NB 41st @ Long Beach Blvd.
 421 = EB Vernon Ave @ Long Beach Blvd.
 821 = EB Century Blvd. @ Grandee
 841 = EB 103rd St @ Long Beach Blvd.
 981 = EB 119th St. @ Willowbrook Blvd.
 982 = WB 119th St. @ Willowbrook Blvd.

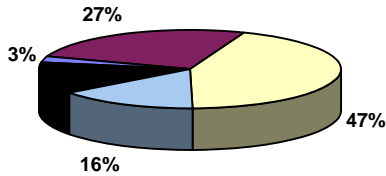
1051 = EB 130th @ Willowbrook Blvd.
 1052 = EB Stockwell @ Willowbrook Blvd.
 1081 = EB Stockwell @ Willowbrook Blvd.
 1082 = WB Stockwell @ Willowbrook Blvd.
 2003 = EB Washington to NB Los Angeles
 2008 = WB Washinton to SB Los Angeles
 2017 = EB Washinton to NB San Pedro

2018 = WB Washinton to SB San Pedro
 2027 = EB Washinton to NB Broadway
 2036 = SB Flower to EB 18th Street
 2046 = SB Flower to EB 18th Street
 2054 = WB Venice @ Flower
 2056 = SB Flower to EB Venice

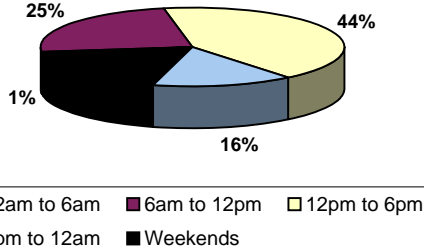
December 2008 View (3 Month Trend)



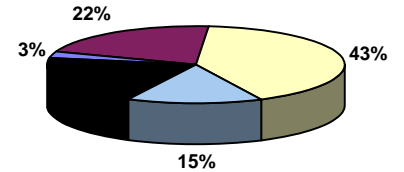
October 2008 Weekday Citations



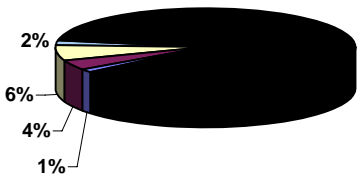
November 2008 Weekday Citations



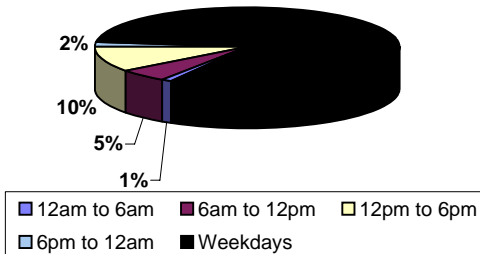
December 2008 Weekday Citations



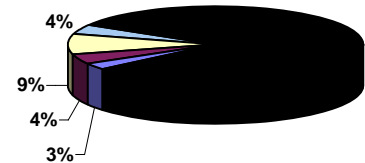
October 2008 Weekend Citations



November 2008 Weekend Citations

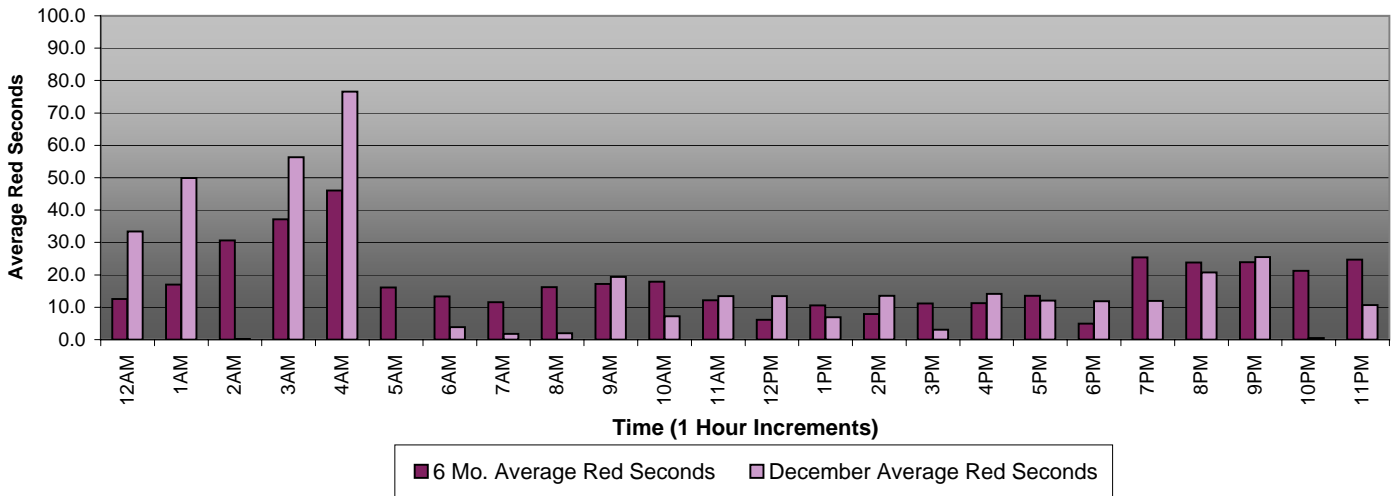


December 2008 Weekend Citations

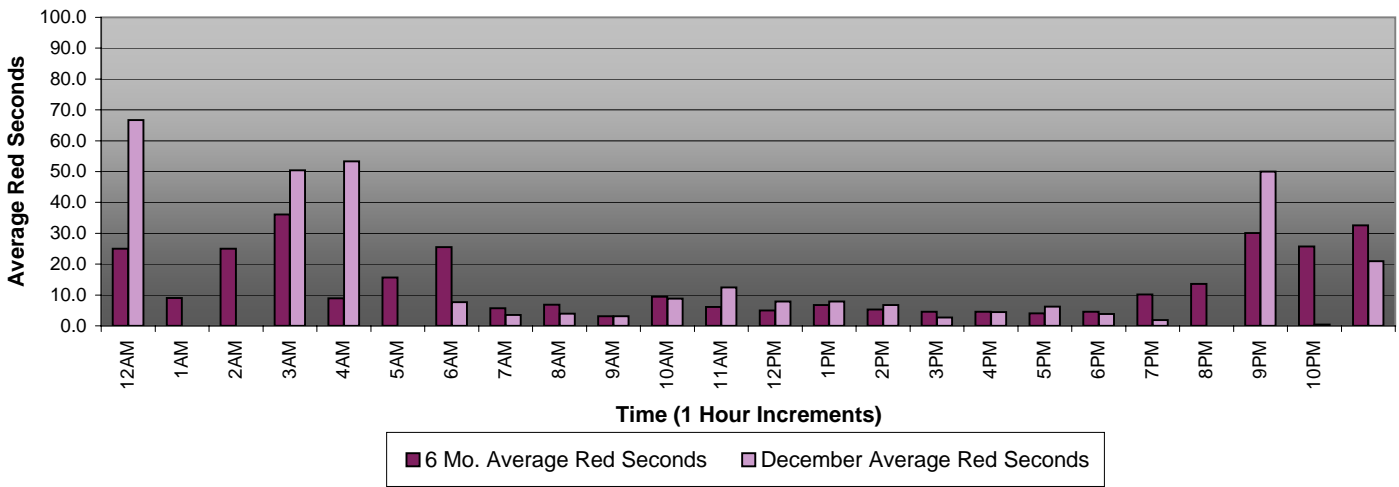




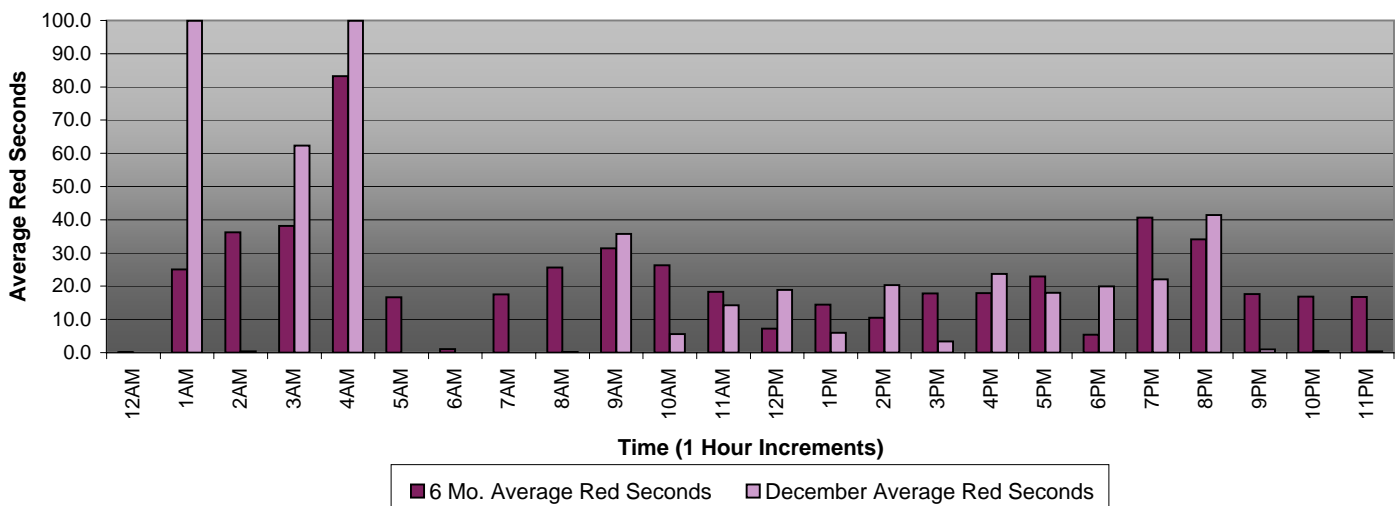
2008 Average Red Seconds (Combined 6 Month Trend, July - December)



2008 Average Red Seconds (Weekdays 6 Mo. Trend, July - December)

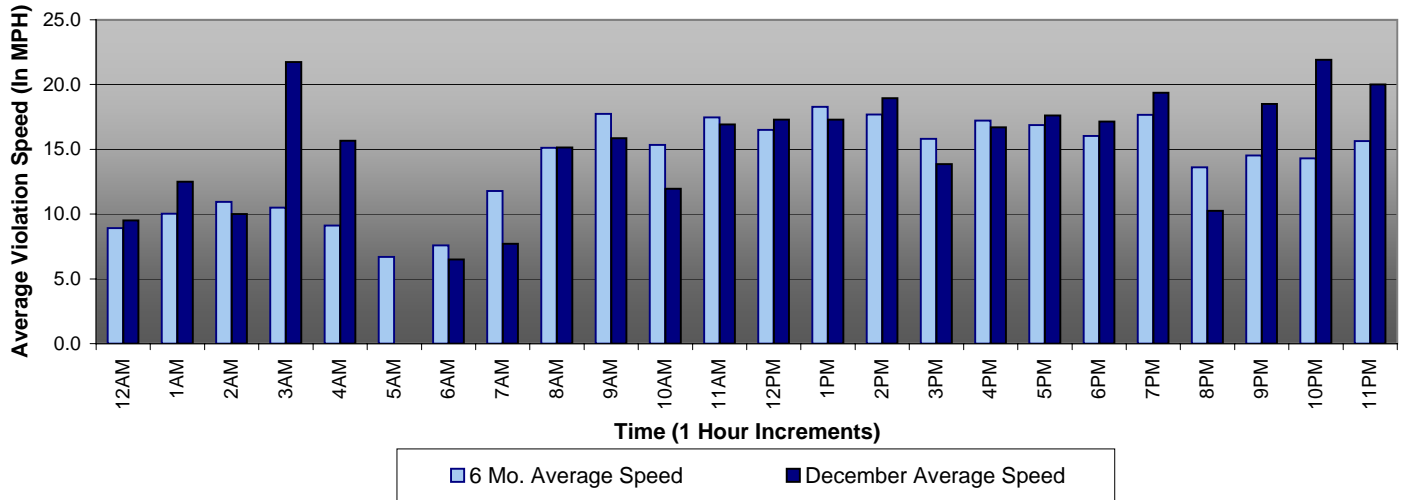


2008 Average Red Seconds (Weekends, 6 Mo. Trend, July - December)

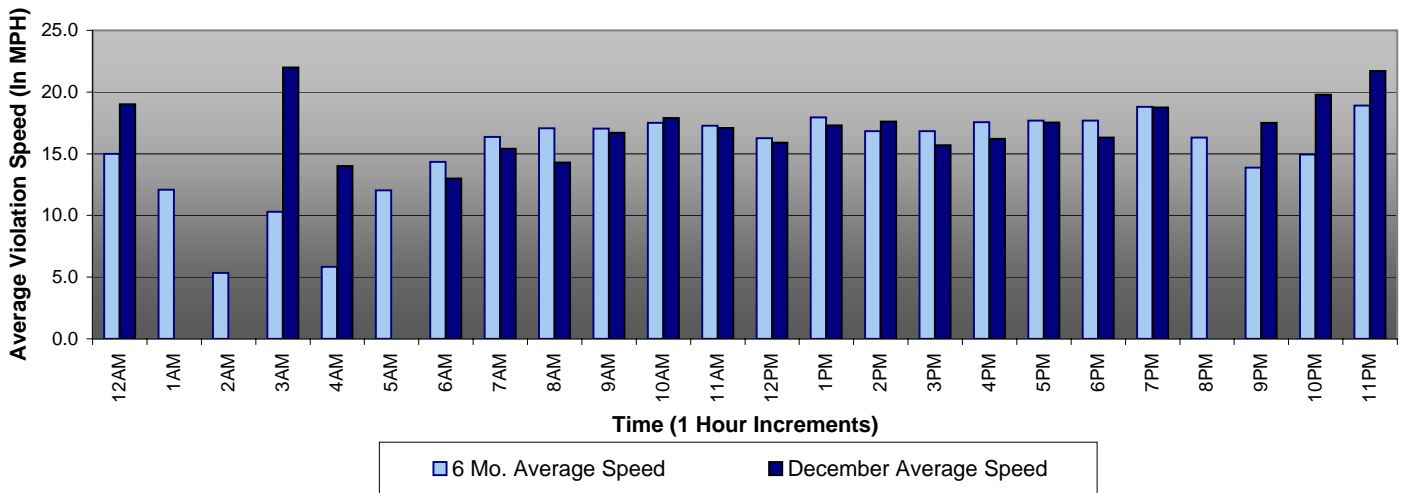




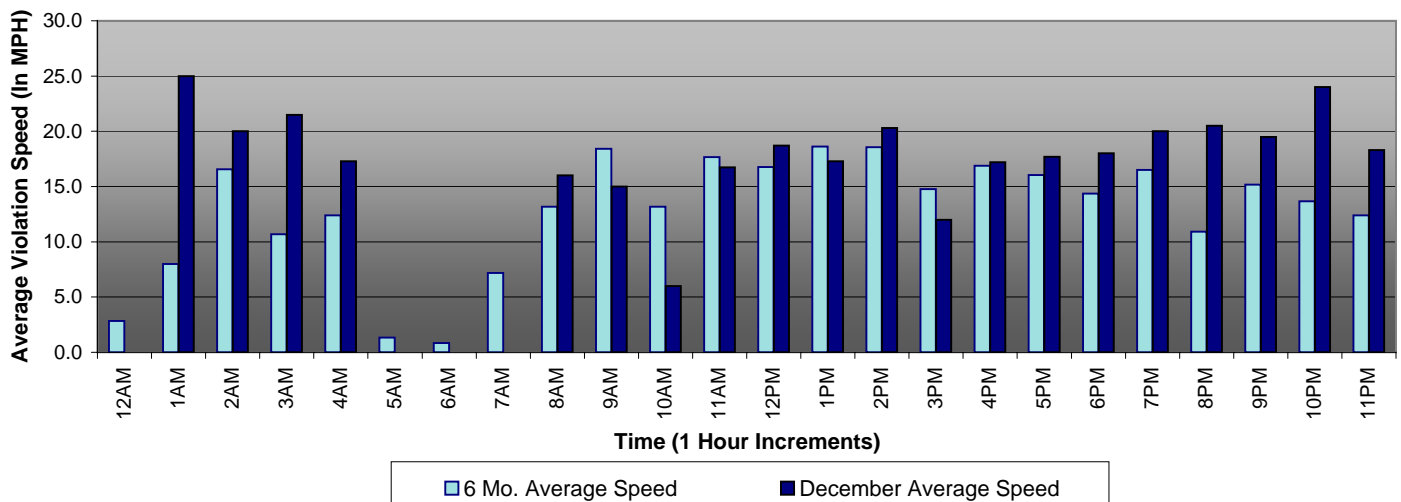
2008 Average Violation Speed (Combined 6 Month Trend, July - December)



2008 Average Violation Speed (Weekdays 6 Mo. Trend, July - December)



2008 Average Violation Speed (Weekends, 6 Mo. Trend, July - December)





expertise in action™

Los Angeles County MTA Blue Line Monthly Citation Yield - By Location *December 2008*

Direction	Location	Code	Days of Enforcement	Events	Violations	Citations	Yield*
WB	20th St @ Long Beach Blvd.	322	31	2	1	0	0.00
NB	41st St @ Long Beach Blvd.	391	31	0	0	0	0.00
EB	Vernon Ave @ Long Beach	421	31	10	7	5	0.16
EB	48th Place @ Long Beach	451	31	2	1	0	0.00
EB	Century Blvd. @ Grandee	821	31	8	6	3	0.10
WB	Century Blvd. @ Grandee	822	31	12	12	6	0.19
EB	103rd St @ Grandee	841	31	18	17	8	0.26
EB	119th St @ Willowbrook	981	31	2	2	1	0.03
WB	119th St @ Willowbrook	982	31	51	42	13	0.42
EB	130th @ Willowbrook	1051	31	14	14	4	0.13
WB	130th @ Willowbrook	1052	31	17	16	7	0.23
EB	Stockwell @ Willowbrook	1081	31	18	12	6	0.19
WB	Stockwell @ Willowbrook	1082	31	11	10	5	0.16
EB	Washington to NB Los Angeles	2003	31	1276	159	74	2.39
WB	Washington to SB Los Angeles	2008	31	893	22	4	0.13
EB	Washington to NB San Pedro	2017	31	755	144	81	2.61
WB	Washington to SB San Pedro	2018	31	535	29	14	0.45
EB	Washington to NB Broadway	2027	31	709	94	36	1.16
SB	Flower to EB 18th Street	2036	31	111	17	11	0.35
SB	Flower to EB 10 Fwy On Ramp	2046	31	419	66	45	1.45
WB	Vanice @ Flower	2054	31	178	13	4	0.13
SB	Flower to EB Venice	2056	31	254	59	25	0.81
TOTALS FOR December 2008			31	5295	743	352	11.35

*Yield is the number of citations issued per day of enforcement.



expertise in action™

Los Angeles County MTA Blue Line
Disposition Summary Report
December 2008

	Dec-08		3 Month Average		YTD Total		YTD Average		2007 Average	
Disposition Type	Count /Amount Paid		Count /Amount Paid		Count /Amount Paid		Count /Amount Paid		Count /Amount Paid	
<i>Bail Forfeiture</i>	88	\$35,245.00	89	\$35,735.00	1160	\$474,610.00	97	\$39,550.83	133	\$52,818.24
<i>Fine Paid</i>	15	\$6,984.00	20	\$8,984.66	302	\$137,592.99	25	\$11,466.08	26	\$11,451.73
<i>Department Void</i>	1	\$0.00	0	\$0.00	11	\$0.00	1	\$0.00	3	\$0.00
<i>Not Guilty</i>	21	\$0.00	19	\$0.00	326	\$0.00	27	\$0.00	30	\$0.00
<i>Section D Void</i>	56	\$0.00	57	\$0.00	713	\$0.00	59	\$0.00	90	\$0.00
<i>Traffic School</i>	88	\$36,714.00	50	\$20,892.00	823	\$342,745.99	69	\$28,562.17	101	\$40,977.91
Court Gross Total	269	\$78,943.00	236	\$65,611.66	3,335	\$954,948.98	278	\$79,579.08	383	\$105,247.87
MTA Gross Total*	191	\$29,270.79	159	\$24,460.31	2285	\$351,114.21	190	\$29,259.52	261	\$40,005.59

*Logic built on following model:

MTA receives \$155.13 of \$381 citation where bail forfeiture and fine paid occurs

MTA receives \$151.05 of \$381 citation when traffic school option is paid for



expertise in action™

Los Angeles County MTA Blue Line
Performance Report
December 2008

	<u>Total</u> <u>Events</u>	<u>Non</u> <u>Violations</u>	<u>Potential</u> <u>Violations</u>	<u>Percent</u> <u>Citable</u>	<u>Non Issued</u> <u>Violations</u>	<u>No DMV</u> <u>Match</u>	<u>Police/</u> <u>Client</u> <u>Rejected</u>	<u>Citations</u> <u>Issued</u>	<u>DMV</u> <u>Match</u> <u>Rate</u>	<u>Issuance</u> <u>Rate</u>	<u>Dispo</u> <u>Paid</u>	<u>Pay</u> <u>Rate</u>	<u>Closed</u> <u>No Pay</u>	<u>Pending</u> <u>Open</u>	<u>Closure</u> <u>Rate</u>
Jan-04	5235	4080	1155	22.06%	420	11	1	735	98.53%	63.64%	541	74%	43	151	79%
Feb-04	4775	3564	1211	25.36%	450	13	6	761	98.33%	62.84%	562	74%	51	148	81%
Mar-04	5478	4052	1426	26.03%	637	20	3	789	97.54%	55.33%	569	72%	47	173	78%
Apr-04	4159	2638	1521	36.57%	788	20	6	733	97.36%	48.19%	550	75%	50	133	82%
May-04	4008	2442	1566	39.07%	595	24	4	971	97.60%	62.01%	684	70%	66	221	77%
Jun-04	3563	2232	1331	37.36%	729	22	2	602	96.49%	45.23%	421	70%	45	136	77%
Jul-04	3772	2425	1347	35.71%	532	19	4	815	97.73%	60.50%	581	71%	64	170	79%
Aug-04	3476	2270	1206	34.70%	696	28	12	510	94.91%	42.29%	366	72%	38	106	79%
Sep-04	3701	2417	1284	34.69%	823	22	6	461	95.50%	35.90%	340	74%	33	88	81%
Oct-04	3497	2260	1237	35.37%	549	15	3	688	97.88%	55.62%	484	70%	63	141	80%
Nov-04	3218	2056	1162	36.11%	467	20	15	695	97.26%	59.81%	499	72%	41	155	78%
Dec-04	3843	2736	1107	28.81%	590	15	14	517	97.25%	46.70%	373	72%	49	95	82%
Jan-05	3656	2621	1035	28.31%	456	15	41	579	97.64%	55.94%	421	73%	35	123	79%
Feb-05	3200	2207	993	31.03%	440	9	27	553	98.47%	55.69%	403	73%	43	107	81%
Mar-05	3156	2116	1040	32.95%	454	26	29	586	95.94%	56.35%	433	74%	47	106	82%
Apr-05	3688	2383	1305	35.39%	755	126	32	550	82.20%	42.15%	403	73%	48	99	82%
May-05	3617	2390	1227	33.92%	618	117	24	609	84.40%	49.63%	440	72%	52	117	81%
Jun-05	3871	2719	1152	29.76%	650	114	41	502	82.65%	43.58%	347	69%	38	117	77%
Jul-05	3507	2277	1230	35.07%	538	111	0	692	86.18%	56.26%	456	66%	101	135	80%
Aug-05	3711	2481	1230	33.14%	675	142	19	555	80.17%	45.12%	393	71%	45	117	79%
Sep-05	3855	2629	1226	31.80%	562	125	8	664	84.32%	54.16%	469	71%	47	148	78%
Oct-05	4897	3728	1169	23.87%	566	97	18	603	86.49%	51.58%	415	69%	57	131	78%
Nov-05	4956	3785	1171	23.63%	633	105	16	538	84.07%	45.94%	396	74%	32	110	80%
Dec-05	4919	3937	982	19.96%	529	116	26	453	80.50%	46.13%	340	75%	35	78	83%
Jan-06	4752	3726	1026	21.59%	558	98	30	468	83.56%	45.61%	348	74%	37	83	82%
Feb-06	4929	3808	1121	22.74%	657	97	33	464	83.67%	41.39%	335	72%	34	95	80%
Mar-06	5620	4412	1208	21.49%	710	110	72	498	83.82%	41.23%	342	69%	54	102	80%
Apr-06	5159	4084	1075	20.84%	572	126	30	503	80.88%	46.79%	363	72%	52	88	83%
May-06	4914	3801	1113	22.65%	566	124	26	547	82.21%	49.15%	395	72%	54	98	82%
Jun-06	4855	3834	1021	21.03%	531	153	17	490	76.82%	47.99%	361	74%	37	92	81%
Jul-06	4835	3620	1215	25.13%	647	108	40	568	84.92%	46.75%	393	69%	59	116	80%
Aug-06	4677	3572	1105	23.63%	820	123	19	285	71.19%	25.79%	195	68%	26	64	78%
Sep-06	4487	3396	1091	24.31%	702	115	21	389	78.10%	35.66%	264	68%	46	79	80%
Oct-06	7566	6244	1322	17.47%	913	181	27	409	70.66%	30.94%	301	74%	21	87	79%
Nov-06	5897	4690	1207	20.47%	706	112	52	501	83.16%	41.51%	357	71%	47	97	81%
Dec-06	5891	4671	1220	20.71%	697	128	78	523	82.44%	42.87%	376	72%	34	113	78%
Jan-07	5244	4035	1209	23.05%	822	129	63	387	77.72%	32.01%	272	70%	37	78	80%
Feb-07	4897	3777	1120	22.87%	913	140	61	207	65.69%	18.48%	153	74%	17	37	82%
Mar-07	5936	4506	1430	24.09%	967	191	90	463	74.33%	32.38%	323	70%	46	94	80%
Apr-07	5139	4237	902	17.55%	595	111	88	307	78.06%	34.04%	199	65%	54	54	82%
May-07	1148	471	677	58.97%	270	100	76	407	82.85%	60.12%	283	70%	28	96	76%
Jun-07	3802	2589	1213	31.90%	955	125	85	258	73.29%	21.27%	174	67%	11	73	72%
Jul-07	3417	2250	1167	34.15%	932	116	96	235	74.05%	20.14%	143	61%	18	74	69%
Aug-07	4301	3151	1150	26.74%	861	130	66	289	73.20%	25.13%	188	65%	20	81	72%
Sep-07	3904	3069	835	21.39%	588	104	56	247	74.45%	29.58%	141	57%	21	85	66%
Oct-07	6157	5056	1101	17.88%	771	100	43	330	78.86%	29.97%	180	55%	36	114	65%
Nov-07	7367	6035	1332	18.08%	913	115	2	419	78.54%	31.46%	163	39%	158	98	77%
Dec-07	5880	4659	1221	20.77%	869	122	0	352	74.26%	28.83%	149	42%	116	87	75%



expertise in action™

Los Angeles County MTA Blue Line
Performance Report
December 2008

	<u>Total</u> <u>Events</u>	<u>Non</u> <u>Violations</u>	<u>Potential</u> <u>Violations</u>	<u>Percent</u> <u>Citable</u>	<u>Non Issued</u> <u>Violations</u>	<u>No DMV</u> <u>Match</u>	<u>Police/</u> <u>Client</u> <u>Rejected</u>	<u>Citations</u> <u>Issued</u>	<u>DMV</u> <u>Match</u> <u>Rate</u>	<u>Issuance</u> <u>Rate</u>	<u>Dispo</u> <u>Paid</u>	<u>Pay</u> <u>Rate</u>	<u>Closed</u> <u>No Pay</u>	<u>Pending</u> <u>Open</u>	<u>Closure</u> <u>Rate</u>
Jan-08	6059	5047	1012	16.70%	679	112	0	333	74.83%	32.91%	195	59%	79	59	82%
Feb-08	7348	6296	1052	14.32%	695	122	1	357	74.58%	33.94%	202	57%	83	72	80%
Mar-08	6761	5525	1236	18.28%	890	110	2	346	75.98%	27.99%	172	50%	90	84	76%
Apr-08	6259	4964	1295	20.69%	1025	94	0	270	74.18%	20.85%	153	57%	45	72	73%
May-08	6273	5174	1099	17.52%	906	63	2	193	75.58%	17.56%	102	53%	40	51	74%
Jun-08	5517	4350	1167	21.15%	957	74	0	210	73.94%	17.99%	103	49%	36	71	66%
Jul-08	5736	4740	996	17.36%	745	74	3	251	77.44%	25.20%	137	55%	34	80	68%
Aug-08	5001	3982	1019	20.38%	687	91	2	332	78.59%	32.58%	136	41%	60	136	59%
Sep-08	5049	4204	845	16.74%	514	77	1	331	81.17%	39.17%	100	30%	48	183	45%
Oct-08	5045	4313	732	14.51%	451	59	0	281	82.65%	38.39%	48	17%	35	198	30%
Nov-08	4824	4190	634	13.14%	339	65	0	295	81.94%	46.53%	23	8%	46	226	23%
Dec-08	5295	4552	743	14.03%	391	70	0	352	83.41%	47.38%	1	0%	115	236	33%
Total	285,699	217,475	68,224	23.88%	39,966	5,301	1,539	28,258	84.90%	41.42%	18,656	70.65%	2,944	6,658	78.92%

*Pay Rate and Closure Rate percentages are based on a 4 month lag