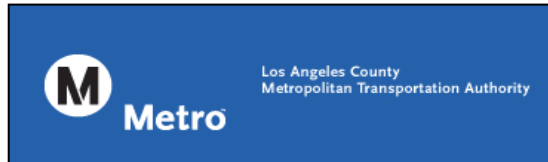




Blue Line Monthly Report



January - December 2018



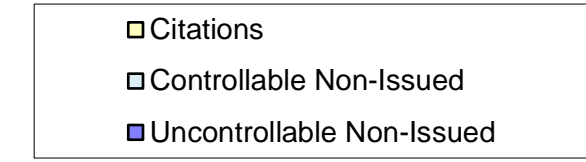
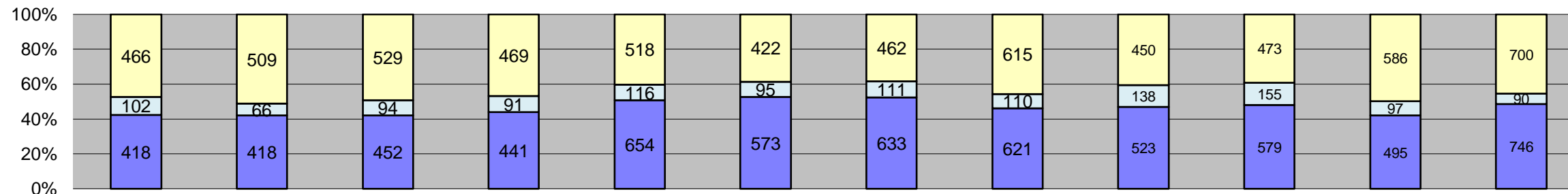
Prepared by: Conduent State and Local Solutions
Confidential

Table of Contents

Report Title	Page
<i>Approach Summary Report, All Locations.....</i>	2
<i>Approach Summary Report, Location 322, WB 20th Street @ Long Beach Boulevard.....</i>	3
<i>Approach Summary Report, Location 421, EB Vernon Avenue @ Long Beach Boulevard.....</i>	4
<i>Approach Summary Report, Location 821, EB Century Blvd. @ Grandee Avenue.....</i>	5
<i>Approach Summary Report, Location 822, WB Century Blvd. @ Grandee Avenue.....</i>	6
<i>Approach Summary Report, Location 841, EB 103rd Street @ Grandee Avenue.....</i>	7
<i>Approach Summary Report, Location 981, EB 119th Street @ Willowbrook Boulevard.....</i>	8
<i>Approach Summary Report, Location 982, WB 119th Street @ Willowbrook Boulevard.....</i>	9
<i>Approach Summary Report, Location 1051, EB 130th Street @ Willowbrook Boulevard.....</i>	10
<i>Approach Summary Report, Location 1052, WB 130th Street @ Willowbrook Boulevard.....</i>	11
<i>Approach Summary Report, Location 1081, EB Stockwell Street @ Willowbrook Boulevard.....</i>	12
<i>Approach Summary Report, Location 1082, WB Stockwell Street @ Willowbrook Boulevard.....</i>	13
<i>Approach Summary Report, Location 2003, EB Washington Boulevard @ Los Angeles Street.....</i>	14
<i>Approach Summary Report, Location 2008, WB Washington Boulevard @ Los Angeles Street.....</i>	15
<i>Approach Summary Report, Location 2017, EB Washington Boulevard @ San Pedro Street.....</i>	16
<i>Approach Summary Report, Location 2018, WB Washington Boulevard @ San Pedro Street.....</i>	17
<i>Approach Summary Report, Location 2027, EB Washington Boulevard @ Broadway Street.....</i>	18
<i>Approach Summary Report, Location 2036, SB Flower Street @ 18th Street.....</i>	19
<i>Approach Summary Report, Location 2046, SB Flower Street to EB 10 Freeway On Ramp.....</i>	20
<i>Approach Summary Report, Location 2054, WB Venice @ Flower.....</i>	21
<i>Approach Summary Report, Location 2056, SB Venice @ Flower.....</i>	22
<i>Monthly Citation Yield Report.....</i>	23



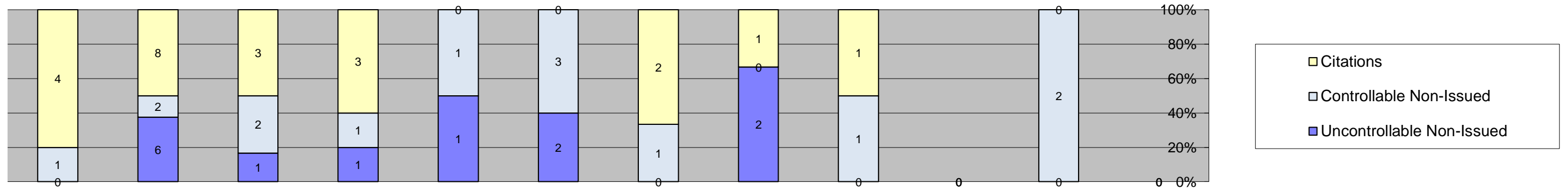
Los Angeles County MTA Blue Line
Approach Summary Report
All Locations
2018



Events	Jan-18	Feb-18	Mar-18	Apr-18	May-18	Jun-18	Jul-18	Aug-18	Sep-18	Oct-18	Nov-18	Dec-18	Year to Date Average	
													Quantity	%
Non-Violations	7,084	5,916	7,244	6,107	6,426	6,168	6,821	6,461	6,441	6,813	7,019	6,514	6,585	85%
Violations	986	993	1,075	1,001	1,288	1,090	1,206	1,346	1,111	1,207	1,178	1,536	1,168	15%
Total:	8,070	6,909	8,319	7,108	7,714	7,258	8,027	7,807	7,552	8,020	8,197	8,050	7,753	100%
Violations														
Uncontrollable Non-Issued	418	418	452	441	654	573	633	621	523	579	495	746	546	47%
Controllable Non-Issued	102	66	94	91	116	95	111	110	138	155	97	90	105	9%
Citations	466	509	529	469	518	422	462	615	450	473	586	700	517	44%
Total:	986	993	1,075	1,001	1,288	1,090	1,206	1,346	1,111	1,207	1,178	1,536	1,168	100%
Non-Violations														
Emergency Vehicle Non-Issuable	20	22	19	24	21	28	24	32	13	25	17	21	22	0%
Emergency Vehicle PD	0	1	1	1	2	3	0	5	0	0	1	1	2	0%
Intersection Control in Progress- PD	0	0	0	0	1	2	0	2	0	0	0	0	2	0%
Gate Down/ No Train	0	0	0	0	0	0	0	0	0	0	0	0	0	0%
No Violation Occurred	5,238	4,081	5,153	4,213	4,432	4,064	4,878	4,578	4,564	1,876	1,929	2,280	3,941	45%
Rear Axle Activation	0	1	1	0	0	1	0	0	0	2	3	3	2	0%
Right Turn- No Violation	0	0	0	0	0	0	0	0	0	0	0	0	0	0%
Test Shot	1,823	1,810	2,068	1,868	1,966	2,068	1,918	1,843	1,863	1,868	1,886	1,790	1,898	22%
Train Activation	0	0	0	0	0	0	0	0	0	3,042	3,182	2,418	2,881	33%
Amber Time Low	0	0	0	0	1	0	0	0	0	0	0	0	1	0%
Vehicle Stopped- PD	3	1	2	1	3	2	1	1	1	0	1	1	2	0%
Total:	7,084	5,916	7,244	6,107	6,426	6,168	6,821	6,461	6,441	6,813	7,019	6,514	8,749	100%
Uncontrollable Non-Issued Violations														
Administrative Dismissal	0	0	0	0	0	0	0	0	0	0	0	0	0	0%
Address/CDL/DOB/Match Fail	0	0	0	0	0	0	0	0	50	0	0	0	50	8%
Car Obstructed	26	28	24	28	27	25	25	41	51	44	40	48	34	5%
Conditions Beyond Control	0	0	9	0	0	0	0	0	0	0	0	0	9	1%
Driver Identity Unclear	60	53	26	31	55	27	38	61	14	40	28	25	38	6%
Driver Obstructed	31	27	34	36	43	40	34	26	43	38	54	52	38	6%
Exposed	0	0	0	0	0	0	0	0	0	0	0	0	0	0%
Emergency Vehicle Issue	0	0	0	0	0	0	0	6	5	8	5	0	6	1%
Glare on Plate	48	31	20	12	17	16	21	38	44	31	29	26	28	4%
Glare on Windshield	19	30	28	47	48	65	67	55	40	43	21	24	41	6%
Illegible Plate	11	10	14	6	9	12	11	19	12	26	27	15	14	2%
Interest of Justice- PD	1	0	0	1	0	0	0	1	0	0	1	96	20	3%
Image Quality- PD	3	2	3	11	13	9	7	20	2	5	14	10	8	1%
Issuance Criteria Not Met- PD	2	5	11	8	0	0	1	0	0	0	8	39	11	2%
No Warning Sign	0	0	0	0	0	0	0	0	0	0	0	0	0	0%
No Plate	149	176	143	164	183	207	185	217	194	229	208	214	189	28%
No Speed Captured	0	0	0	0	0	0	0	0	0	0	0	0	0	0%
Obstruction In Photo- PD	23	25	14	22	19	14	19	22	12	15	24	16	19	3%
Out of State	17	8	16	15	16	15	17	22	17	24	20	17	17	3%
Plate Obstructed	28	23	16	17	25	24	27	27	33	17	15	47	25	4%
Short Yellow- PD	0	0	0	0	0	0	0	0	0	0	0	0	0	0%
Third Party Damage	0	0	0	0	0	0	0	0	0	0	0	0	0	0%
TSB Epired	0	0	0	0	0	0	0	0	0	55	1	0	28	4%
TSB No Hit	0	0	94	43	199	119	181	66	6	4	0	117	92	14%
Total:	418	418	452	441	654	573	633	621	523	579	495	746	667	100%
Controllable Non-Issued Violations														
Conduent Expire	0	0	0	0	0	0	0	0	0	0	0	0	0	0%
Clarity of Plate	0	0	0	0	0	0	0	0	0	0	0	0	0	0%
Clarity of Driver	0	0	0	0	0	0	1	0	0	0	0	0	1	1%
Dark Interior	16	4	6	21	14	19	19	17	8	5	8	7	12	8%
Data Box Related- PD	0	0	0	0	0	0	0	0	0	0	0	0	0	0%
Data Box Data Error- PD	0	0	0	0	0	0	0	0	0	0	0	0	0	0%
Data Entry Error	19	8	14	12	31	11	19	25	24	13	7	5	16	11%
Exposed	0	0	0	0	0	0	0	0	0	0	0	0	0	0%
Equipment Malfunction	4	8	7	1	2	0	1	3	28	7	6	7	7	5%
Framing- PD	0	0	0	0	0	0	0	0	0	0	0	0	0	0%
Framing of Car	55	43	65	54	67	63	65	56	65	84	71	66	63	43%
Framing of Driver	6	2	0	0	1	1	3	9	13	4	3	4	5	3%
Operator Error	0	0	0	0	0	0	0	0	0	0	0	0	0	0%
Framing of Plate	0	0	0	0	0	0	1	0	0	2	2	1	2	1%
Reject Expired	0	0	0	0	0	0	0	0	0	40	0	0	40	27%
Speed Not Determined	2	1	2	3	1	1	2	0	0	0	0	0	2	1%
Total:	102	66	94	91	116	95	111	110	138	155	97	90	146	100%
Summary Metrics														
Daily Average Vehicle Passes	0	0	0	0	0	0	0	0	0	0	0	0	0	0
Average Issued Speed	17	17	17	16	16	17	17	17	17	16	17	15	17	17
Average Issued Red Seconds	48.0	76.0	12.0	110.6	14.1	44.8	44.6	55.7	14.9	9.3	53.4	191.6	56.2	56.2
Citation / Violation Issuance Rate	47%	51%	49%	47%	40%	39%	38%	46%	41%	39%	50%	46%	44%	44%
Controllable Issuance Rate	82%	89%	85%	84%	82%	82%	81%	85%	77%	75%	86%	89%	83%	83%



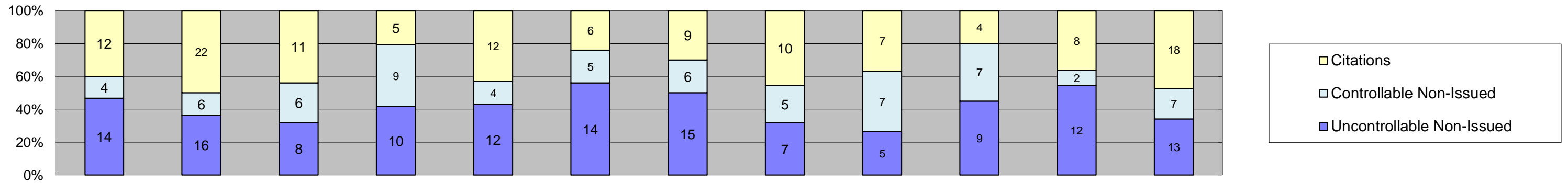
Los Angeles County MTA Blue Line
 Approach Summary Report
 Location 322: WB 20th St @ Long Beach Ave
 Straight Through Movements



Events	Jan-18	Feb-18	Mar-18	Apr-18	May-18	Jun-18	Jul-18	Aug-18	Sep-18	Oct-18	Nov-18	Dec-18	Year to Date Average	
													Quantity	%
Non-Violations	265	286	287	307	327	307	322	473	471	470	478	378	364	99%
Violations	5	16	6	5	2	5	3	3	2	0	2	0	5	1%
Total:	270	302	293	312	329	312	325	476	473	470	480	378	369	100%
Violations														
Uncontrollable Non-Issued	0	6	1	1	1	2	0	2	0	0	0	0	2	32%
Controllable Non-Issued	1	2	2	1	1	3	1	0	1	0	2	0	2	23%
Citations	4	8	3	3	0	0	2	1	1	0	0	0	3	46%
Total:	5	16	6	5	2	5	3	3	2	0	2	0	7	100%
Non-Violations														
Emergency Vehicle Non-Issuable	0	0	0	0	0	0	0	1	0	0	0	0	1	0%
Emergency Vehicle PD	0	0	0	0	0	0	0	0	0	0	0	0	0	0%
Intersection Control in Progress- PD	0	0	0	0	0	0	0	0	0	0	0	0	0	0%
Gate Down/ No Train	0	0	0	0	0	0	0	0	0	0	0	0	0	0%
No Violation Occurred	121	133	119	155	158	138	162	286	290	154	199	130	170	39%
Rear Axle Activation	0	0	0	0	0	0	0	0	0	0	0	0	0	0%
Right Turn- No Violation	0	0	0	0	0	0	0	0	0	0	0	0	0	0%
Test Shot	143	153	168	152	169	169	160	186	181	210	178	155	169	38%
Train Activation	0	0	0	0	0	0	0	0	0	106	101	93	100	23%
Amber Time Low	0	0	0	0	0	0	0	0	0	0	0	0	0	0%
Vehicle Stopped- PD	1	0	0	0	0	0	0	0	0	0	0	0	1	0%
Total:	265	286	287	307	327	307	322	473	471	470	478	378	441	100%
Uncontrollable Non-Issued Violations														
Administrative Dismissal	0	0	0	0	0	0	0	0	0	0	0	0	0	0%
Address/CDL/DOB/Match Fail	0	0	0	0	0	0	0	0	0	0	0	0	0	0%
Car Obstructed	0	0	0	0	0	0	0	0	0	0	0	0	0	0%
Conditions Beyond Control	0	0	0	0	0	0	0	0	0	0	0	0	0	0%
Driver Identity Unclear	0	0	0	0	0	0	0	0	0	0	0	0	0	0%
Driver Obstructed	0	0	0	0	0	0	0	0	0	0	0	0	0	0%
Exposed	0	0	0	0	0	0	0	0	0	0	0	0	0	0%
Emergency Vehicle Issue	0	0	0	0	0	0	0	0	0	0	0	0	0	0%
Glare on Plate	0	2	0	0	0	0	0	2	0	0	0	0	2	30%
Glare on Windshield	0	0	0	0	0	0	0	0	0	0	0	0	0	0%
Illegible Plate	0	0	0	0	0	0	0	0	0	0	0	0	0	0%
Interest of Justice- PD	0	0	0	0	0	0	0	0	0	0	0	0	0	0%
Image Quality- PD	0	0	0	0	0	0	0	0	0	0	0	0	0	0%
Issuance Criteria Not Met- PD	0	0	0	0	0	0	0	0	0	0	0	0	0	0%
No Warning Sign	0	0	0	0	0	0	0	0	0	0	0	0	0	0%
No Plate	0	2	0	0	1	2	0	0	0	0	0	0	2	25%
No Speed Captured	0	0	0	0	0	0	0	0	0	0	0	0	0	0%
Obstruction In Photo- PD	0	0	0	0	0	0	0	0	0	0	0	0	0	0%
Out of State	0	1	0	0	0	0	0	0	0	0	0	0	1	15%
Plate Obstructed	0	1	0	1	0	0	0	0	0	0	0	0	1	15%
Short Yellow- PD	0	0	0	0	0	0	0	0	0	0	0	0	0	0%
Third Party Damage	0	0	0	0	0	0	0	0	0	0	0	0	0	0%
TSB Epired	0	0	0	0	0	0	0	0	0	0	0	0	0	0%
TSB No Hit	0	0	1	0	0	0	0	0	0	0	0	0	1	15%
Total:	0	6	1	1	1	2	0	2	0	0	0	0	7	100%
Controllable Non-Issued Violations														
Conduent Expire	0	0	0	0	0	0	0	0	0	0	0	0	0	0%
Clarity of Plate	0	0	0	0	0	0	0	0	0	0	0	0	0	0%
Clarity of Driver	0	0	0	0	0	0	0	0	0	0	0	0	0	0%
Dark Interior	0	0	0	0	0	0	0	0	0	0	0	0	0	0%
Data Box Related- PD	0	0	0	0	0	0	0	0	0	0	0	0	0	0%
Data Box Data Error- PD	0	0	0	0	0	0	0	0	0	0	0	0	0	0%
Data Entry Error	0	0	0	0	0	1	0	0	0	0	0	0	1	41%
Exposed	0	0	0	0	0	0	0	0	0	0	0	0	0	0%
Equipment Malfunction	0	0	0	0	0	0	0	0	0	0	0	0	0	0%
Framing- PD	0	0	0	0	0	0	0	0	0	0	0	0	0	0%
Framing of Car	1	2	2	1	1	2	1	0	1	0	2	0	1	59%
Framing of Driver	0	0	0	0	0	0	0	0	0	0	0	0	0	0%
Operator Error	0	0	0	0	0	0	0	0	0	0	0	0	0	0%
Framing of Plate	0	0	0	0	0	0	0	0	0	0	0	0	0	0%
Reject Expired	0	0	0	0	0	0	0	0	0	0	0	0	0	0%
Speed Not Determined	0	0	0	0	0	0	0	0	0	0	0	0	0	0%
Total:	1	2	2	1	1	3	1	0	1	0	2	0	2	100%
Summary Metrics														
Daily Average Vehicle Passes	0	0	0	0	0	0	0	0	0	0	0	0	0	0
Average Issued Speed	8	8	8	0	0	0	12	13	12	0	12	12	11	
Average Issued Red Seconds	175.8	555.6	5.5	0.0	0.0	0.0	281.0	6.9	6.2	0.0	77.0	5.0	139.1	
Citation / Violation Issuance Rate	80%	50%	50%	60%	0%	0%	67%	33%	50%	0%	0%	0%	56%	
Controllable Issuance Rate	80%	80%	60%	75%	0%	0%	67%	100%	50%	0%	0%	0%	73%	



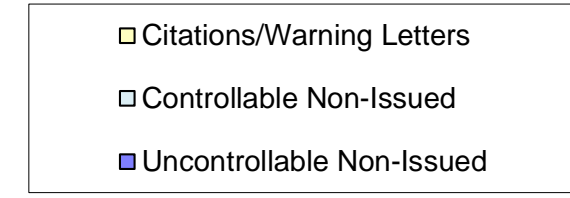
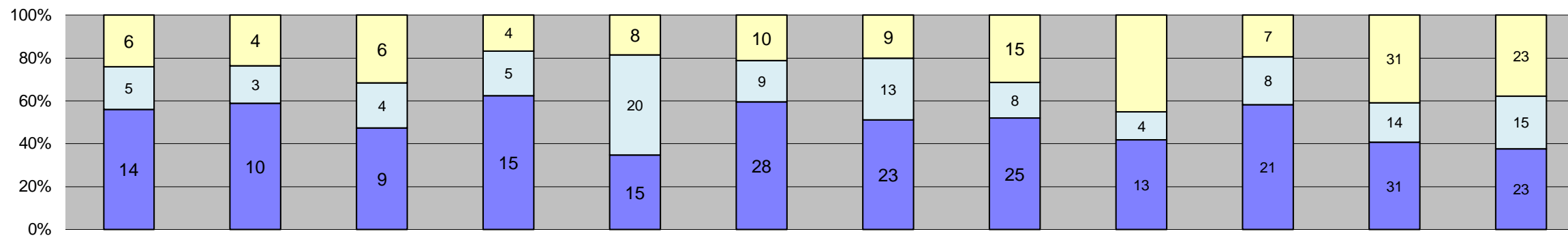
Los Angeles County MTA Blue Line
 Approach Summary Report
 Location 421: EB Vernon Ave @ Long Beach Ave
 Straight Through Movements



Events	Jan-18	Feb-18	Mar-18	Apr-18	May-18	Jun-18	Jul-18	Aug-18	Sep-18	Oct-18	Nov-18	Dec-18	Year to Date Average	
													Quantity	%
Non-Violations	118	108	127	117	122	150	152	135	120	131	131	125	128	82%
Violations	30	44	25	24	28	25	30	22	19	20	22	38	27	18%
Total:	148	152	152	141	150	175	182	157	139	151	153	163	155	100%
Violations														
Uncontrollable Non-Issued	14	16	8	10	12	14	15	7	5	9	12	13	11	41%
Controllable Non-Issued	4	6	6	9	4	5	6	5	7	7	2	7	6	21%
Citations	12	22	11	5	12	6	9	10	7	4	8	18	10	38%
Total:	30	44	25	24	28	25	30	22	19	20	22	38	27	100%
Non-Violations														
Emergency Vehicle Non-Issuable	0	0	1	0	0	0	0	1	1	2	0	0	1	1%
Emergency Vehicle PD	0	0	0	0	0	0	0	0	0	0	0	0	0	0%
Intersection Control in Progress- PD	0	0	0	0	0	0	0	0	0	0	0	0	0	0%
Gate Down/ No Train	0	0	0	0	0	0	0	0	0	0	0	0	0	0%
No Violation Occurred	29	31	30	28	28	54	47	33	36	29	35	30	34	25%
Rear Axle Activation	0	0	0	0	0	0	0	0	0	0	1	0	1	1%
Right Turn- No Violation	0	0	0	0	0	0	0	0	0	0	0	0	0	0%
Test Shot	87	77	96	89	94	96	105	101	83	88	89	84	91	65%
Train Activation	0	0	0	0	0	0	0	0	0	12	6	11	10	7%
Amber Time Low	0	0	0	0	0	0	0	0	0	0	0	0	0	0%
Vehicle Stopped- PD	2	0	0	0	0	0	0	0	0	0	0	0	2	1%
Total:	118	108	127	117	122	150	152	135	120	131	131	125	139	100%
Uncontrollable Non-Issued Violations														
Administrative Dismissal	0	0	0	0	0	0	0	0	0	0	0	0	0	0%
Address/DOB/DOB/Driver's License	0	0	0	0	0	0	0	0	0	0	0	0	0	0%
Car Obstructed	0	3	2	1	0	2	0	1	0	3	1	1	2	7%
Conditions Beyond Control	0	0	0	0	0	0	0	0	0	0	0	0	0	0%
Driver Identity Unclear	3	0	0	0	0	0	0	0	0	0	2	0	3	10%
Driver Obstructed	2	1	0	1	0	0	2	0	1	2	0	1	1	6%
Exposed	0	0	0	0	0	0	0	0	0	0	0	0	0	0%
Emergency Vehicle Issue	0	0	0	0	0	0	0	0	0	0	0	0	0	0%
Glare on Plate	1	2	0	0	0	0	0	2	0	0	4	1	2	8%
Glare on Windshield	0	0	0	3	0	1	2	0	0	0	0	0	2	8%
Illegible Plate	0	0	0	0	0	0	0	0	0	0	0	0	0	0%
Interest of Justice- PD	0	0	0	0	0	0	0	0	0	0	0	0	0	0%
Image Quality- PD	2	0	0	0	0	0	0	0	0	0	0	0	2	8%
Issuance Criteria Not Met- PD	0	0	0	0	0	0	1	0	0	0	1	0	1	4%
No Warning Sign	0	0	0	0	0	0	0	0	0	0	0	0	0	0%
No Plate	4	7	2	4	2	3	2	0	2	2	1	5	3	13%
No Speed Captured	0	0	0	0	0	0	0	0	0	0	0	0	0	0%
Obstruction In Photo- PD	0	0	0	0	0	0	0	0	0	0	0	1	1	4%
Out of State	0	0	0	0	1	1	1	0	0	0	0	0	1	4%
Plate Obstructed	2	3	1	1	1	2	3	2	2	2	3	4	2	9%
Short Yellow- PD	0	0	0	0	0	0	0	0	0	0	0	0	0	0%
Third Party Damage	0	0	0	0	0	0	0	0	0	0	0	0	0	0%
TSB Epired	0	0	0	0	0	0	0	0	0	0	0	0	0	0%
TSB No Hit	0	0	3	0	8	5	4	2	0	0	0	0	4	18%
Total:	14	16	8	10	12	14	15	7	5	9	12	13	24	100%
Controllable Non-Issued Violations														
Conduent Expire	0	0	0	0	0	0	0	0	0	0	0	0	0	0%
Clarity of Plate	0	0	0	0	0	0	0	0	0	0	0	0	0	0%
Clarity of Driver	0	0	0	0	0	0	0	0	0	0	0	0	0	0%
Dark Interior	1	0	0	1	1	2	0	1	0	0	0	0	1	11%
Data Box Related- PD	0	0	0	0	0	0	0	0	0	0	0	0	0	0%
Data Box Data Error- PD	0	0	0	0	0	0	0	0	0	0	0	0	0	0%
Data Entry Error	0	0	0	0	0	0	0	0	1	0	0	0	1	9%
Exposed	0	0	0	0	0	0	0	0	0	0	0	0	0	0%
Equipment Malfunction	0	0	0	0	0	0	0	1	0	0	0	0	1	9%
Framing- PD	0	0	0	0	0	0	0	0	0	0	0	0	0	0%
Framing of Car	3	6	6	7	3	2	5	3	6	6	2	7	5	43%
Framing of Driver	0	0	0	0	0	0	1	0	0	0	0	0	1	9%
Operator Error	0	0	0	0	0	0	0	0	0	0	0	0	0	0%
Framing of Plate	0	0	0	0	0	0	0	0	0	0	0	0	0	0%
Reject Expired	0	0	0	0	0	0	0	0	0	1	0	0	1	9%
Speed Not Determined	0	0	0	1	0	1	0	0	0	0	0	0	1	9%
Total:	4	6	6	9	4	5	6	5	7	7	2	7	11	100%
Summary Metrics														
Daily Average Vehicle Passes	0	0	0	0	0	0	0	0	0	0	0	0	0	0
Average Issued Speed	16	14	16	16	19	19	18	17	16	18	19	17	17	17
Average Issued Red Seconds	250.1	498.0	7.3	1750.9	6.2	20.8	19.7	135.1	5.7	5.4	5.6	6.3	225.9	225.9
Citation / Violation Issuance Rate	40%	50%	44%	21%	43%	24%	30%	45%	37%	20%	36%	47%	36%	36%
Controllable Issuance Rate	75%	79%	65%	36%	75%	55%	60%	67%	50%	36%	80%	72%	62%	62%



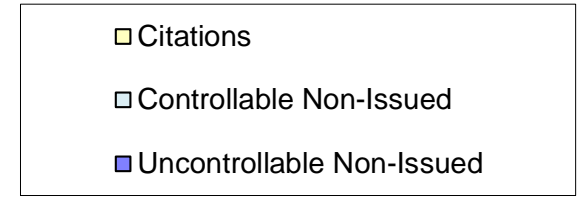
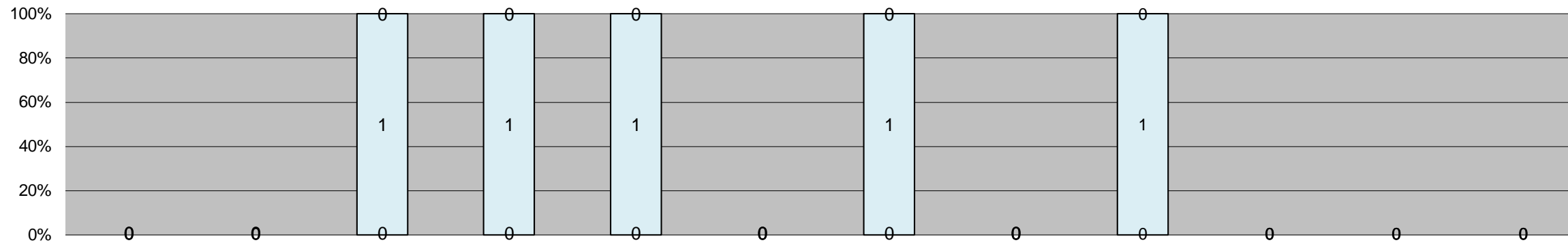
**Los Angeles County MTA Blue Line
Approach Summary Report
Location 821: EB Century Blvd @ Grandee Ave
Straight Through Movements**



Events	Month												Year to Date Average	
	Jan-18	Feb-18	Mar-18	Apr-18	May-18	Jun-18	Jul-18	Aug-18	Sep-18	Oct-18	Nov-18	Dec-18	Quantity	%
Non-Violations	190	134	111	143	166	124	129	116	137	159	117	118	137	78%
Violations	25	17	19	24	43	47	45	48	31	36	76	61	39	22%
Total:	215	151	130	167	209	171	174	164	168	195	193	179	176	100%
Violations														
Uncontrollable Non-Issued	14	10	9	15	15	28	23	25	13	21	31	23	19	48%
Controllable Non-Issued	5	3	4	5	20	9	13	8	4	8	14	15	9	23%
Citations/Warning Letters	6	4	6	4	8	10	9	15	14	7	31	23	11	29%
Total:	25	17	19	24	43	47	45	48	31	36	76	61	39	100%
Non-Violations														
Emergency Vehicle Non-Issuable	3	2	2	2	1	2	1	2	0	0	0	1	2	1%
Emergency Vehicle PD	0	0	0	0	0	0	0	0	0	0	0	0	0	0%
Intersection Control in Progress- PD	0	0	0	0	0	0	0	0	0	0	0	0	0	0%
Gate Down/ No Train	0	0	0	0	0	0	0	0	0	0	0	0	0	0%
No Violation Occurred	100	51	13	51	70	19	35	24	48	10	9	7	36	22%
Rear Axle Activation	0	0	0	0	0	0	0	0	0	0	0	0	0	0%
Right Turn- No Violation	0	0	0	0	0	0	0	0	0	0	0	0	0	0%
Test Shot	87	81	95	90	95	103	93	90	89	89	86	89	91	55%
Train Activation	0	0	0	0	0	0	0	0	0	60	22	21	34	21%
Amber Time Low	0	0	0	0	0	0	0	0	0	0	0	0	0	0%
Vehicle Stopped- PD	0	0	1	0	0	0	0	0	0	0	0	0	1	1%
Total:	190	134	111	143	166	124	129	116	137	159	117	118	164	100%
Uncontrollable Non-Issued Violations														
Administrative Dismissal	0	0	0	0	0	0	0	0	0	0	0	0	0	0%
Address/DOB/Driver's License	0	0	0	0	0	0	0	0	0	0	0	0	0	0%
Car Obstructed	0	1	3	0	0	2	0	0	0	0	0	0	2	7%
Conditions Beyond Control	0	0	0	0	0	0	0	0	0	0	0	0	0	0%
Driver Identity Unclear	1	3	0	1	1	2	1	1	0	1	0	3	2	5%
Driver Obstructed	3	1	0	4	3	1	0	0	0	1	1	4	2	8%
Exposed	0	0	0	0	0	0	0	0	0	0	0	0	0	0%
Emergency Vehicle Issue	0	0	0	0	0	0	0	0	0	0	0	0	0	0%
Glare on Plate	1	1	3	0	0	1	0	4	1	0	1	0	2	6%
Glare on Windshield	0	0	0	2	3	2	3	2	2	1	2	0	2	7%
Illegible Plate	1	0	0	0	1	0	0	4	1	2	5	2	2	8%
Interest of Justice- PD	0	0	0	0	0	0	0	0	0	0	1	0	1	3%
Image Quality- PD	0	0	0	1	0	0	0	0	0	0	0	2	2	5%
Insurance Criteria Not Met- PD	0	0	0	0	0	0	0	0	0	0	0	0	0	0%
No Warning Sign	0	0	0	0	0	0	0	0	0	0	0	0	0	0%
No Plate	4	3	2	2	4	10	11	9	5	15	15	7	7	25%
No Speed Captured	0	0	0	0	0	0	0	0	0	0	0	0	0	0%
Obstruction In Photo- PD	2	0	1	1	2	2	2	1	1	0	3	2	2	6%
Out of State	0	0	0	0	0	1	1	1	1	0	0	0	1	3%
Plate Obstructed	2	1	0	2	0	4	2	0	1	0	3	1	2	7%
Short Yellow- PD	0	0	0	0	0	0	0	0	0	0	0	0	0	0%
Third Party Damage	0	0	0	0	0	0	0	0	0	0	0	0	0	0%
TSB Expired	0	0	0	0	0	0	0	0	0	1	0	0	1	3%
TSB No Hit	0	0	0	2	1	3	3	3	1	0	0	2	2	7%
Total:	14	10	9	15	15	28	23	25	13	21	31	23	30	100%
Controllable Non-Issued Violations														
Conduent Expire	0	0	0	0	0	0	0	0	0	0	0	0	0	0%
Clarity of Plate	0	0	0	0	0	0	0	0	0	0	0	0	0	0%
Clarity of Driver	0	0	0	0	0	0	0	0	0	0	0	0	0	0%
Dark Interior	0	0	0	0	0	0	1	0	0	0	0	0	1	7%
Data Box Related- PD	0	0	0	0	0	0	0	0	0	0	0	0	0	0%
Data Box Data Error- PD	0	0	0	0	0	0	0	0	0	0	0	0	0	0%
Data Entry Error	1	0	0	0	11	1	1	1	0	0	0	0	3	20%
Exposed	0	0	0	0	0	0	0	0	0	0	0	0	0	0%
Equipment Malfunction	0	0	0	0	0	0	0	0	0	0	0	1	1	7%
Framing- PD	0	0	0	0	0	0	0	0	0	0	0	0	0	0%
Framing of Car	4	3	4	5	9	8	11	7	4	6	13	14	7	48%
Framing of Driver	0	0	0	0	0	0	0	0	0	0	0	0	0	0%
Operator Error	0	0	0	0	0	0	0	0	0	0	0	0	0	0%
Framing of Plate	0	0	0	0	0	0	0	0	0	0	1	0	1	7%
Reject Expired	0	0	0	0	0	0	0	0	0	2	0	0	2	13%
Speed Not Determined	0	0	0	0	0	0	0	0	0	0	0	0	0	0%
Total:	5	3	4	5	20	9	13	8	4	8	14	15	15	100%
Summary Metrics														
Daily Average Vehicle Passes	0	0	0	0	0	0	0	0	0	0	0	0	0	
Average Issued Speed	22	21	20	22	21	17	20	16	23	23	16	20	20	
Average Issued Red Seconds	11.7	51.5	45.9	6.0	5.7	204.6	48.0	274.6	9.7	5.5	496.1	109.1	105.7	
Citation / Violation Issuance Rate	24%	24%	32%	17%	19%	21%	20%	31%	45%	19%	41%	38%	28%	
Controllable Issuance Rate	55%	57%	60%	44%	29%	53%	41%	65%	78%	47%	69%	61%	55%	



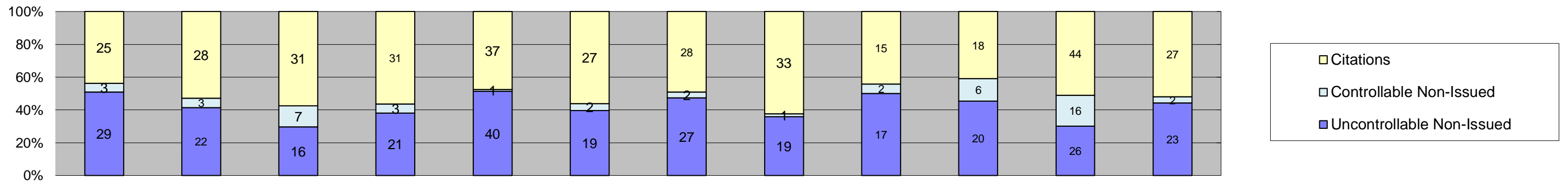
**Los Angeles County MTA Blue Line
Approach Summary Report
Location 822: WB Century Blvd @ Grandee Ave
Straight Through Movements**



Events	Jan-18	Feb-18	Mar-18	Apr-18	May-18	Jun-18	Jul-18	Aug-18	Sep-18	Oct-18	Nov-18	Dec-18	Year to Date Average	
													Quantity	%
Non-Violations	87	80	88	86	92	94	84	88	82	86	83	93	87	99%
Violations	0	0	1	1	1	0	1	0	1	0	0	0	1	1%
Total:	87	80	89	87	93	94	85	88	83	86	83	93	88	100%
Violations														
Uncontrollable Non-Issued	0	0	0	0	0	0	0	0	0	0	0	0	0	0%
Controllable Non-Issued	0	0	1	1	1	0	1	0	1	0	0	0	1	100%
Citations	0	0	0	0	0	0	0	0	0	0	0	0	0	0%
Total:	0	0	1	1	1	0	1	0	1	0	0	0	1	100%
Non-Violations														
Emergency Vehicle Non-Issuable	0	0	0	0	0	0	0	0	0	0	0	0	0	0%
Emergency Vehicle PD	0	0	0	0	0	0	0	0	0	0	0	0	0	0%
Intersection Control in Progress- PD	0	0	0	0	0	0	0	0	0	0	0	0	0	0%
Gate Down/ No Train	0	0	0	0	0	0	0	0	0	0	0	0	0	0%
No Violation Occurred	0	0	0	0	0	0	0	0	0	0	0	0	0	0%
Rear Axle Activation	0	0	0	0	0	0	0	0	0	0	0	0	0	0%
Right Turn- No Violation	0	0	0	0	0	0	0	0	0	0	0	0	0	0%
Test Shot	87	80	88	86	92	94	84	88	82	86	83	93	87	100%
Train Activation	0	0	0	0	0	0	0	0	0	0	0	0	0	0%
Amber Time Low	0	0	0	0	0	0	0	0	0	0	0	0	0	0%
Vehicle Stopped- PD	0	0	0	0	0	0	0	0	0	0	0	0	0	0%
Total:	87	80	88	86	92	94	84	88	82	86	83	93	87	100%
Uncontrollable Non-Issued Violations														
Administrative Dismissal	0	0	0	0	0	0	0	0	0	0	0	0	0	0%
Address/DOB/Driver	0	0	0	0	0	0	0	0	0	0	0	0	0	0%
Fail	0	0	0	0	0	0	0	0	0	0	0	0	0	0%
Car Obstructed	0	0	0	0	0	0	0	0	0	0	0	0	0	0%
Conditions Beyond Control	0	0	0	0	0	0	0	0	0	0	0	0	0	0%
Driver Identity Unclear	0	0	0	0	0	0	0	0	0	0	0	0	0	0%
Driver Obstructed	0	0	0	0	0	0	0	0	0	0	0	0	0	0%
Exposed	0	0	0	0	0	0	0	0	0	0	0	0	0	0%
Emergency Vehicle Issue	0	0	0	0	0	0	0	0	0	0	0	0	0	0%
Glare on Plate	0	0	0	0	0	0	0	0	0	0	0	0	0	0%
Glare on Windshield	0	0	0	0	0	0	0	0	0	0	0	0	0	0%
Illegible Plate	0	0	0	0	0	0	0	0	0	0	0	0	0	0%
Interest of Justice- PD	0	0	0	0	0	0	0	0	0	0	0	0	0	0%
Image Quality- PD	0	0	0	0	0	0	0	0	0	0	0	0	0	0%
Insurance Criteria Not Met- PD	0	0	0	0	0	0	0	0	0	0	0	0	0	0%
No Warning Sign	0	0	0	0	0	0	0	0	0	0	0	0	0	0%
No Plate	0	0	0	0	0	0	0	0	0	0	0	0	0	0%
No Speed Captured	0	0	0	0	0	0	0	0	0	0	0	0	0	0%
Obstruction In Photo- PD	0	0	0	0	0	0	0	0	0	0	0	0	0	0%
Out of State	0	0	0	0	0	0	0	0	0	0	0	0	0	0%
Plate Obstructed	0	0	0	0	0	0	0	0	0	0	0	0	0	0%
Short Yellow- PD	0	0	0	0	0	0	0	0	0	0	0	0	0	0%
Third Party Damage	0	0	0	0	0	0	0	0	0	0	0	0	0	0%
TSB Epired	0	0	0	0	0	0	0	0	0	0	0	0	0	0%
TSB No Hit	0	0	0	0	0	0	0	0	0	0	0	0	0	0%
Total:	0	0	0	0	0	0	0	0	0	0	0	0	0	0%
Controllable Non-Issued Violations														
Conduent Expire	0	0	0	0	0	0	0	0	0	0	0	0	0	0%
Clarity of Plate	0	0	0	0	0	0	0	0	0	0	0	0	0	0%
Clarity of Driver	0	0	0	0	0	0	0	0	0	0	0	0	0	0%
Dark Interior	0	0	0	0	0	0	0	0	0	0	0	0	0	0%
Data Box Related- PD	0	0	0	0	0	0	0	0	0	0	0	0	0	0%
Data Box Data Error- PD	0	0	0	0	0	0	0	0	0	0	0	0	0	0%
Data Entry Error	0	0	1	0	1	0	1	0	1	0	0	0	1	50%
Exposed	0	0	0	0	0	0	0	0	0	0	0	0	0	0%
Equipment Malfunction	0	0	0	0	0	0	0	0	0	0	0	0	0	0%
Framing- PD	0	0	0	0	0	0	0	0	0	0	0	0	0	0%
Framing of Car	0	0	0	0	0	0	0	0	0	0	0	0	0	0%
Framing of Driver	0	0	0	0	0	0	0	0	0	0	0	0	0	0%
Operator Error	0	0	0	0	0	0	0	0	0	0	0	0	0	0%
Framing of Plate	0	0	0	0	0	0	0	0	0	0	0	0	0	0%
Reject Expired	0	0	0	0	0	0	0	0	0	0	0	0	0	0%
Speed Not Determined	0	0	0	1	0	0	0	0	0	0	0	0	1	50%
Total:	0	0	1	1	1	0	1	0	1	0	0	0	2	100%
Summary Metrics													Year to Date Average	
Daily Average Vehicle Passes	0	0	0	0	0	0	0	0	0	0	0	0	0	0
Average Issued Speed	0	0	0	0	0	0	0	0	0	0	0	0	0	0
Average Issued Red Seconds	0.0	0.0	0.0	0.0	0.0	0.0	0.0	0.0	0.0	0.0	0.0	0.0	0.0	0.0
Citation / Violation Issuance Rate	0%	0%	0%	0%	0%	0%	0%	0%	0%	0%	0%	0%	0%	0%
Controllable Issuance Rate	0%	0%	0%	0%	0%	0%	0%	0%	0%	0%	0%	0%	0%	0%



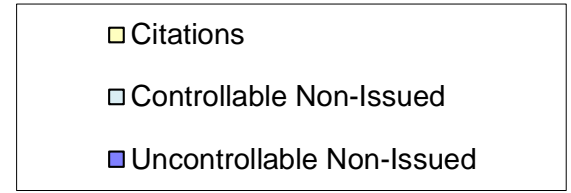
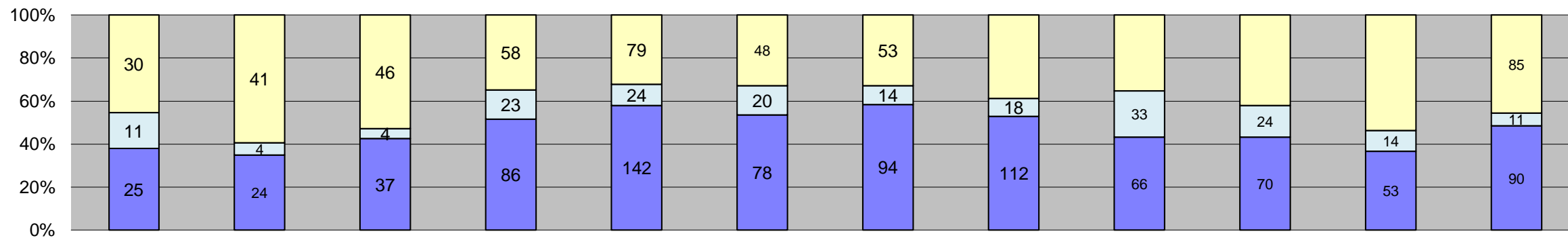
Los Angeles County MTA Blue Line
 Approach Summary Report
 Location 841: EB 103rd St @ Grandee Ave
 Straight Through Movements



Events	Year to Date Average												Quantity	%
	Jan-18	Feb-18	Mar-18	Apr-18	May-18	Jun-18	Jul-18	Aug-18	Sep-18	Oct-18	Nov-18	Dec-18		
Non-Violations	135	107	137	144	173	151	157	151	126	149	156	149	145	72%
Violations	57	53	54	55	78	48	57	53	34	44	86	52	56	28%
Total:	192	160	191	199	251	199	214	204	160	193	242	201	201	100%
Violations														
Uncontrollable Non-Issued	29	22	16	21	40	19	27	19	17	20	26	23	23	42%
Controllable Non-Issued	3	3	7	3	1	2	2	1	2	6	16	2	4	7%
Citations	25	28	31	31	37	27	28	33	15	18	44	27	29	51%
Total:	57	53	54	55	78	48	57	53	34	44	86	52	56	100%
Non-Violations														
Emergency Vehicle Non-Issuable	0	0	1	4	1	0	5	0	0	0	0	0	3	2%
Emergency Vehicle PD	0	0	0	0	0	0	0	0	0	0	0	0	0	0%
Intersection Control in Progress- PD	0	0	0	0	0	0	0	0	0	0	0	0	0	0%
Gate Down/ No Train	0	0	0	0	0	0	0	0	0	0	0	0	0	0%
No Violation Occurred	47	29	37	51	69	54	61	61	44	52	61	52	52	34%
Rear Axle Activation	0	0	0	0	0	0	0	0	0	0	0	0	0	0%
Right Turn- No Violation	0	0	0	0	0	0	0	0	0	0	0	0	0	0%
Test Shot	88	78	99	89	103	97	91	90	82	88	89	93	91	60%
Train Activation	0	0	0	0	0	0	0	0	0	9	6	4	6	4%
Amber Time Low	0	0	0	0	0	0	0	0	0	0	0	0	0	0%
Vehicle Stopped- PD	0	0	0	0	0	0	0	0	0	0	0	0	0	0%
Total:	135	107	137	144	173	151	157	151	126	149	156	149	151	100%
Uncontrollable Non-Issued Violations														
Administrative Dismissal	0	0	0	0	0	0	0	0	0	0	0	0	0	0%
Address/DOB/Driver's License	0	0	0	0	0	0	0	0	3	0	0	0	3	7%
Car Obstructed	0	0	0	0	0	0	0	0	0	2	0	1	2	4%
Conditions Beyond Control	0	0	0	0	0	0	0	0	0	0	0	0	0	0%
Driver Identity Unclear	4	1	0	0	1	2	0	3	0	1	0	0	2	5%
Driver Obstructed	2	0	0	1	2	0	1	0	0	0	1	0	1	3%
Exposed	0	0	0	0	0	0	0	0	0	0	0	0	0	0%
Emergency Vehicle Issue	0	0	0	0	0	0	0	0	0	0	0	0	0	0%
Glare on Plate	6	5	2	1	4	1	1	0	1	5	3	4	3	7%
Glare on Windshield	0	0	0	1	0	0	5	0	0	0	0	0	3	7%
Illegible Plate	0	0	0	0	0	0	0	1	0	0	0	0	1	2%
Interest of Justice- PD	0	0	0	1	0	0	0	0	0	0	0	0	1	2%
Image Quality- PD	0	0	0	1	1	0	0	1	0	0	0	1	1	2%
Insurance Criteria Not Met- PD	0	0	0	0	0	0	0	0	0	0	1	0	1	2%
No Warning Sign	0	0	0	0	0	0	0	0	0	0	0	0	0	0%
No Plate	9	9	8	15	12	8	10	4	10	11	16	7	10	24%
No Speed Captured	0	0	0	0	0	0	0	0	0	0	0	0	0	0%
Obstruction In Photo- PD	5	4	0	0	2	2	1	2	1	0	3	1	2	6%
Out of State	2	0	0	0	0	0	2	0	0	1	0	1	2	4%
Plate Obstructed	1	3	0	1	1	1	1	2	2	0	2	2	2	4%
Short Yellow- PD	0	0	0	0	0	0	0	0	0	0	0	0	0	0%
Third Party Damage	0	0	0	0	0	0	0	0	0	0	0	0	0	0%
TSB Epired	0	0	0	0	0	0	0	0	0	0	0	0	0	0%
TSB No Hit	0	0	6	0	17	5	6	6	0	0	0	6	8	19%
Total:	29	22	16	21	40	19	27	19	17	20	26	23	41	100%
Controllable Non-Issued Violations														
Conduent Expire	0	0	0	0	0	0	0	0	0	0	0	0	0	0%
Clarity of Plate	0	0	0	0	0	0	0	0	0	0	0	0	0	0%
Clarity of Driver	0	0	0	0	0	0	0	0	0	0	0	0	0	0%
Dark Interior	0	0	0	0	0	0	0	0	0	0	0	0	0	0%
Data Box Related- PD	0	0	0	0	0	0	0	0	0	0	0	0	0	0%
Data Box Data Error- PD	0	0	0	0	0	0	0	0	0	0	0	0	0	0%
Data Entry Error	1	0	0	0	0	1	1	0	0	0	2	0	1	13%
Exposed	0	0	0	0	0	0	0	0	0	0	0	0	0	0%
Equipment Malfunction	0	1	1	0	0	0	0	0	0	0	1	0	1	10%
Framing- PD	0	0	0	0	0	0	0	0	0	0	0	0	0	0%
Framing of Car	1	1	5	3	1	1	1	1	2	2	12	2	3	27%
Framing of Driver	0	0	0	0	0	0	0	0	0	0	0	0	0	0%
Operator Error	0	0	0	0	0	0	0	0	0	0	0	0	0	0%
Framing of Plate	0	0	0	0	0	0	0	0	0	1	1	0	1	10%
Reject Expired	0	0	0	0	0	0	0	0	0	3	0	0	3	30%
Speed Not Determined	1	1	1	0	0	0	0	0	0	0	0	0	1	10%
Total:	3	3	7	3	1	2	2	1	2	6	16	2	10	100%
Summary Metrics														
Daily Average Vehicle Passes	0	0	0	0	0	0	0	0	0	0	0	0	0	
Average Issued Speed	16	18	19	18	19	19	20	19	19	18	17	19	18	
Average Issued Red Seconds	28.6	6.1	6.2	8.1	5.8	8.7	18.5	11.0	7.5	5.8	302.2	26.3	36.2	
Citation / Violation Issuance Rate	44%	53%	57%	56%	47%	56%	49%	62%	44%	41%	51%	52%	51%	
Controllable Issuance Rate	89%	90%	82%	91%	97%	93%	93%	97%	88%	75%	73%	93%	89%	



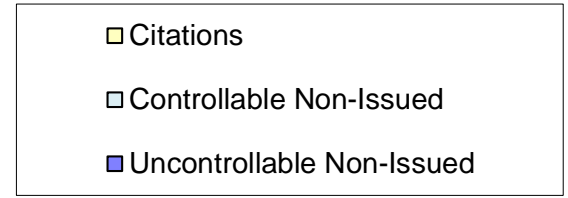
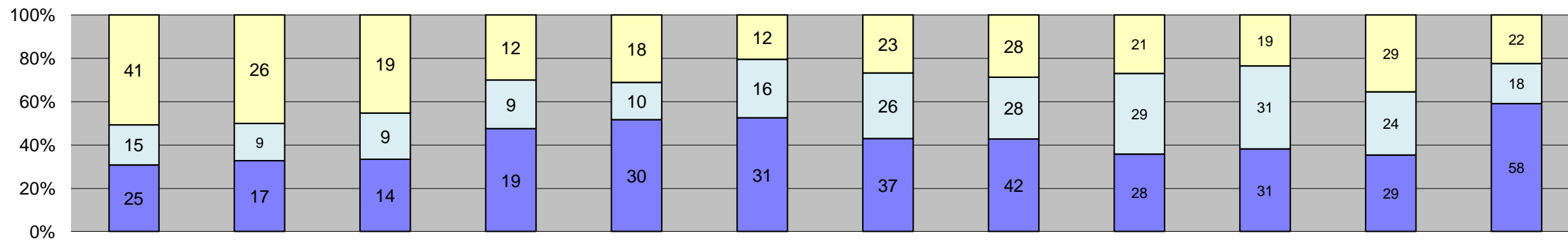
Los Angeles County MTA Blue Line
 Approach Summary Report
 Location 981: EB 119th St @ Willowbrook
 Straight Through Movements



Events	Year to Date Average												Year to Date Average	
	Jan-18	Feb-18	Mar-18	Apr-18	May-18	Jun-18	Jul-18	Aug-18	Sep-18	Oct-18	Nov-18	Dec-18	Quantity	%
Non-Violations	367	192	115	160	240	126	143	138	162	155	135	352	190	56%
Violations	66	69	87	167	245	146	161	212	153	162	145	186	150	44%
Total:	433	261	202	327	485	272	304	350	315	317	280	538	340	100%
Violations														
Uncontrollable Non-Issued	25	24	37	86	142	78	94	112	66	70	53	90	73	49%
Controllable Non-Issued	11	4	4	23	24	20	14	18	33	24	14	11	17	11%
Citations	30	41	46	58	79	48	53	82	54	68	78	85	60	40%
Total:	66	69	87	167	245	146	161	212	153	162	145	186	150	100%
Non-Violations														
Emergency Vehicle Non-Issuable	5	0	0	2	6	3	2	1	1	2	2	0	3	1%
Emergency Vehicle PD	0	0	0	1	1	1	0	2	0	0	0	0	1	1%
Intersection Control in Progress- PD	0	0	0	0	0	1	0	1	0	0	0	0	1	0%
Gate Down/ No Train	0	0	0	0	0	0	0	0	0	0	0	0	0	0%
No Violation Occurred	269	98	9	67	127	20	47	46	64	8	25	252	86	40%
Rear Axle Activation	0	0	0	0	0	0	0	0	0	0	0	0	0	0%
Right Turn- No Violation	0	0	0	0	0	0	0	0	0	0	0	0	0	0%
Test Shot	93	94	106	90	105	101	94	88	97	87	85	98	95	44%
Train Activation	0	0	0	0	0	0	0	0	0	58	23	2	28	13%
Amber Time Low	0	0	0	0	0	0	0	0	0	0	0	0	0	0%
Vehicle Stopped- PD	0	0	0	0	1	0	0	0	0	0	0	0	1	0%
Total:	367	192	115	160	240	126	143	138	162	155	135	352	214	100%
Uncontrollable Non-Issued Violations														
Administrative Dismissal	0	0	0	0	0	0	0	0	0	0	0	0	0	0%
Address/DOB/Driver's License	0	0	0	0	0	0	0	0	3	0	0	0	3	3%
Car Obstructed	1	2	1	2	2	2	2	2	1	3	2	2	2	2%
Conditions Beyond Control	0	0	0	0	0	0	0	0	0	0	0	0	0	0%
Driver Identity Unclear	10	5	7	11	23	7	10	16	6	10	8	5	10	10%
Driver Obstructed	1	0	1	3	5	0	2	0	4	1	8	7	4	3%
Exposed	0	0	0	0	0	0	0	0	0	0	0	0	0	0%
Emergency Vehicle Issue	0	0	0	0	0	0	0	2	2	1	1	0	2	1%
Glare on Plate	1	1	0	3	0	0	1	5	3	6	3	4	3	3%
Glare on Windshield	0	0	2	20	25	15	19	23	11	6	0	3	14	13%
Illegible Plate	1	0	0	0	1	0	0	0	0	0	0	0	1	1%
Interest of Justice- PD	0	0	0	0	0	0	0	1	0	0	0	14	8	7%
Image Quality- PD	0	0	1	3	5	2	3	7	0	0	0	1	3	3%
Issuance Criteria Not Met- PD	0	0	0	0	0	0	0	0	0	0	3	6	5	4%
No Warning Sign	0	0	0	0	0	0	0	0	0	0	0	0	0	0%
No Plate	9	8	9	26	31	28	24	36	25	32	19	23	23	22%
No Speed Captured	0	0	0	0	0	0	0	0	0	0	0	0	0	0%
Obstruction In Photo- PD	0	6	1	1	1	0	3	3	0	1	3	0	2	2%
Out of State	1	0	1	1	2	0	3	2	1	1	3	1	2	2%
Plate Obstructed	1	2	5	5	7	4	3	5	9	3	3	10	5	5%
Short Yellow- PD	0	0	0	0	0	0	0	0	0	0	0	0	0	0%
Third Party Damage	0	0	0	0	0	0	0	0	0	0	0	0	0	0%
TSB Expired	0	0	0	0	0	0	0	0	0	5	0	0	5	5%
TSB No Hit	0	0	9	11	40	20	24	10	1	1	0	14	14	14%
Total:	25	24	37	86	142	78	94	112	66	70	53	90	103	100%
Controllable Non-Issued Violations														
Conduent Expire	0	0	0	0	0	0	0	0	0	0	0	0	0	0%
Clarity of Plate	0	0	0	0	0	0	0	0	0	0	0	0	0	0%
Clarity of Driver	0	0	0	0	0	0	0	0	0	0	0	0	0	0%
Dark Interior	2	0	0	3	2	2	1	7	1	0	0	1	2	8%
Data Box Related- PD	0	0	0	0	0	0	0	0	0	0	0	0	0	0%
Data Box Data Error- PD	0	0	0	0	0	0	0	0	0	0	0	0	0	0%
Data Entry Error	2	1	0	11	12	1	0	4	3	1	0	1	4	13%
Exposed	0	0	0	0	0	0	0	0	0	0	0	0	0	0%
Equipment Malfunction	0	0	0	0	0	0	0	0	17	0	1	1	6	21%
Framing- PD	0	0	0	0	0	0	0	0	0	0	0	0	0	0%
Framing of Car	5	3	4	9	10	17	13	7	12	16	12	7	10	32%
Framing of Driver	1	0	0	0	0	0	0	0	0	1	1	0	1	3%
Operator Error	0	0	0	0	0	0	0	0	0	0	0	0	0	0%
Framing of Plate	0	0	0	0	0	0	0	0	0	1	0	1	1	3%
Reject Expired	0	0	0	0	0	0	0	0	0	5	0	0	5	17%
Speed Not Determined	1	0	0	0	0	0	0	0	0	0	0	0	1	3%
Total:	11	4	4	23	24	20	14	18	33	24	14	11	30	100%
Summary Metrics														
Daily Average Vehicle Passes	0	0	0	0	0	0	0	0	0	0	0	0	0	0
Average Issued Speed	19	19	18	21	21	21	22	20	20	22	22	17	20	20
Average Issued Red Seconds	97.2	75.7	12.2	6.0	18.0	30.0	29.5	39.0	5.8	6.1	7.6	251.3	48.2	48.2
Citation / Violation Issuance Rate	45%	59%	53%	35%	32%	33%	33%	39%	35%	42%	54%	46%	42%	42%
Controllable Issuance Rate	73%	91%	92%	72%	77%	71%	79%	82%	62%	74%	85%	89%	79%	79%



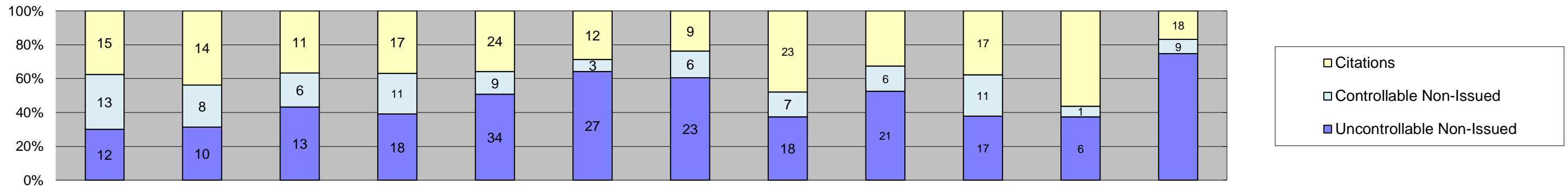
Los Angeles County MTA Blue Line
 Approach Summary Report
 Location 982: WB 119th St @ Willowbrook
 Straight Through Movements



Events	Jan-18	Feb-18	Mar-18	Apr-18	May-18	Jun-18	Jul-18	Aug-18	Sep-18	Oct-18	Nov-18	Dec-18	Year to Date Average	
													Quantity	%
Non-Violations	541	348	448	455	489	513	1,390	745	1,046	771	1,323	556	719	91%
Violations	81	52	42	40	58	59	86	98	78	81	82	98	71	9%
Total:	622	400	490	495	547	572	1,476	843	1,124	852	1,405	654	790	100%
Violations														
Uncontrollable Non-Issued	25	17	14	19	30	31	37	42	28	31	29	58	30	42%
Controllable Non-Issued	15	9	9	9	10	16	26	28	29	31	24	18	19	26%
Citations	41	26	19	12	18	12	23	28	21	19	29	22	23	32%
Total:	81	52	42	40	58	59	86	98	78	81	82	98	71	100%
Non-Violations														
Emergency Vehicle Non-Issuable	1	1	3	1	1	0	3	0	0	0	1	1	2	0%
Emergency Vehicle PD	0	0	0	0	0	0	0	0	0	0	0	0	0	0%
Intersection Control in Progress- PD	0	0	0	0	0	0	0	0	0	0	0	0	0	0%
Gate Down/ No Train	0	0	0	0	0	0	0	0	0	0	0	0	0	0%
No Violation Occurred	456	263	353	373	378	417	1,276	655	946	8	20	146	441	35%
Rear Axle Activation	0	0	0	0	0	0	0	0	0	0	0	0	0	0%
Right Turn- No Violation	0	0	0	0	0	0	0	0	0	0	0	0	0	0%
Test Shot	84	84	92	81	110	96	110	90	100	93	106	95	95	8%
Train Activation	0	0	0	0	0	0	0	0	0	670	1,196	314	727	57%
Amber Time Low	0	0	0	0	0	0	0	0	0	0	0	0	0	0%
Vehicle Stopped- PD	0	0	0	0	0	0	1	0	0	0	0	0	1	0%
Total:	541	348	448	455	489	513	1,390	745	1,046	771	1,323	556	1,265	100%
Uncontrollable Non-Issued Violations														
Administrative Dismissal	0	0	0	0	0	0	0	0	0	0	0	0	0	0%
Address/DOB/DOB/VIOLATION	0	0	0	0	0	0	0	0	2	0	0	0	2	4%
Car Obstructed	3	0	1	0	1	1	0	3	0	0	2	3	2	4%
Conditions Beyond Control	0	0	0	0	0	0	0	0	0	0	0	0	0	0%
Driver Identity Unclear	5	3	4	3	3	3	6	7	2	4	4	1	4	7%
Driver Obstructed	0	1	0	1	2	3	3	1	1	4	6	4	3	5%
Exposed	0	0	0	0	0	0	0	0	0	0	0	0	0	0%
Emergency Vehicle Issue	0	0	0	0	0	0	0	0	1	0	1	0	1	2%
Glare on Plate	0	1	1	1	0	0	0	3	3	0	0	1	2	3%
Glare on Windshield	1	4	1	0	3	4	3	2	3	2	0	1	2	4%
Illegible Plate	1	0	0	0	0	0	1	1	0	1	1	0	1	2%
Interest of Justice- PD	0	0	0	0	0	0	0	0	0	0	0	11	11	19%
Image Quality- PD	0	1	0	0	0	1	1	1	0	0	0	1	1	2%
Insurance Criteria Not Met- PD	0	0	0	0	0	0	0	0	0	0	1	10	6	10%
No Warning Sign	0	0	0	0	0	0	0	0	0	0	0	0	0	0%
No Plate	8	5	5	9	7	9	9	12	11	14	10	9	9	16%
No Speed Captured	0	0	0	0	0	0	0	0	0	0	0	0	0	0%
Obstruction In Photo- PD	0	1	0	3	0	0	0	2	0	0	2	1	2	3%
Out of State	1	0	0	0	0	1	0	1	0	0	1	1	1	2%
Plate Obstructed	6	1	1	1	2	2	4	5	5	2	1	3	3	5%
Short Yellow- PD	0	0	0	0	0	0	0	0	0	0	0	0	0	0%
Third Party Damage	0	0	0	0	0	0	0	0	0	0	0	0	0	0%
TSB Expired	0	0	0	0	0	0	0	0	0	2	0	0	2	4%
TSB No Hit	0	0	1	1	12	7	10	4	0	2	0	12	6	11%
Total:	25	17	14	19	30	31	37	42	28	31	29	58	57	100%
Controllable Non-Issued Violations														
Conduent Expire	0	0	0	0	0	0	0	0	0	0	0	0	0	0%
Clarity of Plate	0	0	0	0	0	0	0	0	0	0	0	0	0	0%
Clarity of Driver	0	0	0	0	0	0	0	0	0	0	0	0	0	0%
Dark Interior	3	0	2	2	3	1	3	1	1	3	4	2	2	9%
Data Box Related- PD	0	0	0	0	0	0	0	0	0	0	0	0	0	0%
Data Box Data Error- PD	0	0	0	0	0	0	0	0	0	0	0	0	0	0%
Data Entry Error	5	1	0	0	1	0	14	12	12	7	5	0	7	28%
Exposed	0	0	0	0	0	0	0	0	0	0	0	0	0	0%
Equipment Malfunction	0	0	0	0	0	0	0	0	1	1	0	1	1	4%
Framing- PD	0	0	0	0	0	0	0	0	0	0	0	0	0	0%
Framing of Car	7	6	7	7	6	15	9	12	15	17	15	15	11	43%
Framing of Driver	0	2	0	0	0	0	0	3	0	1	0	0	2	8%
Operator Error	0	0	0	0	0	0	0	0	0	0	0	0	0	0%
Framing of Plate	0	0	0	0	0	0	0	0	0	0	0	0	0	0%
Reject Expired	0	0	0	0	0	0	0	0	0	2	0	0	2	8%
Speed Not Determined	0	0	0	0	0	0	0	0	0	0	0	0	0	0%
Total:	15	9	9	9	10	16	26	28	29	31	24	18	25	100%
Summary Metrics														
Daily Average Vehicle Passes	0	0	0	0	0	0	0	0	0	0	0	0	0	0
Average Issued Speed	17	16	14	14	13	16	16	14	16	13	14	14	15	15
Average Issued Red Seconds	13.6	120.4	21.5	13.7	42.2	94.9	103.5	68.9	78.6	6.6	10.8	574.6	95.8	95.8
Citation / Violation Issuance Rate	51%	50%	45%	30%	31%	20%	27%	29%	27%	23%	35%	22%	33%	33%
Controllable Issuance Rate	73%	74%	68%	57%	64%	43%	47%	50%	42%	38%	55%	55%	56%	56%



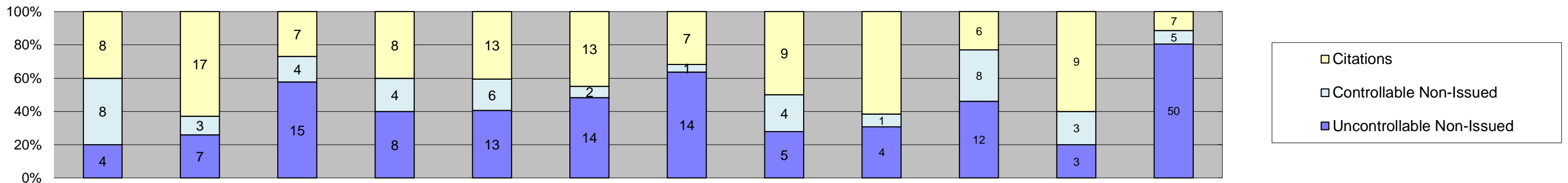
Los Angeles County MTA Blue Line
 Approach Summary Report
 Location 1051: EB 130th St @ Willowbrook
 Straight Through Movements



Events	Year to Date Average													
	Jan-18	Feb-18	Mar-18	Apr-18	May-18	Jun-18	Jul-18	Aug-18	Sep-18	Oct-18	Nov-18	Dec-18	Quantity	%
Non-Violations	262	134	258	119	164	95	108	117	125	120	103	101	142	76%
Violations	40	32	30	46	67	42	38	48	40	45	16	107	46	24%
Total:	302	166	288	165	231	137	146	165	165	165	119	208	188	100%
Violations														
Uncontrollable Non-Issued	12	10	13	18	34	27	23	18	21	17	6	80	23	51%
Controllable Non-Issued	13	8	6	11	9	3	6	7	6	11	1	9	8	16%
Citations	15	14	11	17	24	12	9	23	13	17	9	18	15	33%
Total:	40	32	30	46	67	42	38	48	40	45	16	107	46	100%
Non-Violations														
Emergency Vehicle Non-Issuable	0	0	0	0	0	0	0	0	0	0	0	0	0	0%
Emergency Vehicle PD	0	0	0	0	0	0	0	0	0	0	0	0	0	0%
Intersection Control in Progress- PD	0	0	0	0	1	0	0	0	0	0	0	0	1	1%
Gate Down/ No Train	0	0	0	0	0	0	0	0	0	0	0	0	0	0%
No Violation Occurred	180	55	163	32	63	6	25	38	37	12	5	6	52	33%
Rear Axle Activation	0	0	0	0	0	0	0	0	0	0	0	0	0	0%
Right Turn- No Violation	0	0	0	0	0	0	0	0	0	0	0	0	0	0%
Test Shot	82	79	95	87	100	89	83	79	88	88	82	84	86	56%
Train Activation	0	0	0	0	0	0	0	0	0	20	16	11	16	10%
Amber Time Low	0	0	0	0	0	0	0	0	0	0	0	0	0	0%
Vehicle Stopped- PD	0	0	0	0	0	0	0	0	0	0	0	0	0	0%
Total:	262	134	258	119	164	95	108	117	125	120	103	101	155	100%
Uncontrollable Non-Issued Violations														
Administrative Dismissal	0	0	0	0	0	0	0	0	0	0	0	0	0	0%
Address/DOB/Driver's License	0	0	0	0	0	0	0	0	1	0	0	0	1	1%
Car Obstructed	1	0	0	0	0	0	0	0	1	1	0	5	2	3%
Conditions Beyond Control	0	0	0	0	0	0	0	0	0	0	0	0	0	0%
Driver Identity Unclear	4	3	3	3	1	0	3	0	0	0	2	0	3	4%
Driver Obstructed	0	0	0	1	1	3	0	0	1	0	1	4	2	2%
Exposed	0	0	0	0	0	0	0	0	0	0	0	0	0	0%
Emergency Vehicle Issue	0	0	0	0	0	0	0	1	1	0	0	0	1	1%
Glare on Plate	1	1	3	0	0	1	1	0	1	1	0	0	1	2%
Glare on Windshield	0	0	0	0	3	4	5	3	3	0	0	0	4	5%
Illegible Plate	0	0	0	0	0	0	0	0	0	0	0	0	0	0%
Interest of Justice- PD	0	0	0	0	0	0	0	0	0	0	0	32	32	42%
Image Quality- PD	0	0	0	1	0	0	0	1	0	0	0	0	1	1%
Issuance Criteria Not Met- PD	0	0	0	0	0	0	0	0	0	0	0	6	6	8%
No Warning Sign	0	0	0	0	0	0	0	0	0	0	0	0	0	0%
No Plate	5	6	6	7	8	10	4	7	8	9	3	11	7	9%
No Speed Captured	0	0	0	0	0	0	0	0	0	0	0	0	0	0%
Obstruction In Photo- PD	0	0	0	0	0	0	0	1	0	1	0	0	1	1%
Out of State	0	0	0	0	0	0	0	0	4	2	0	0	3	4%
Plate Obstructed	1	0	0	1	2	1	1	3	1	0	0	7	2	3%
Short Yellow- PD	0	0	0	0	0	0	0	0	0	0	0	0	0	0%
Third Party Damage	0	0	0	0	0	0	0	0	0	0	0	0	0	0%
TSB Epired	0	0	0	0	0	0	0	0	0	3	0	0	3	4%
TSB No Hit	0	0	1	5	19	8	9	2	0	0	0	15	8	11%
Total:	12	10	13	18	34	27	23	18	21	17	6	80	77	100%
Controllable Non-Issued Violations														
Conduent Expire	0	0	0	0	0	0	0	0	0	0	0	0	0	0%
Clarity of Plate	0	0	0	0	0	0	0	0	0	0	0	0	0	0%
Clarity of Driver	0	0	0	0	0	0	0	0	0	0	0	0	0	0%
Dark Interior	2	0	1	5	0	1	2	1	0	1	0	2	2	13%
Data Box Related- PD	0	0	0	0	0	0	0	0	0	0	0	0	0	0%
Data Box Data Error- PD	0	0	0	0	0	0	0	0	0	0	0	0	0	0%
Data Entry Error	4	1	1	0	4	0	0	3	0	2	0	2	2	17%
Exposed	0	0	0	0	0	0	0	0	0	0	0	0	0	0%
Equipment Malfunction	0	1	0	0	0	0	0	0	0	0	0	3	2	14%
Framing- PD	0	0	0	0	0	0	0	0	0	0	0	0	0	0%
Framing of Car	6	6	4	6	5	2	4	3	6	5	1	2	4	29%
Framing of Driver	1	0	0	0	0	0	0	0	0	0	0	0	1	7%
Operator Error	0	0	0	0	0	0	0	0	0	0	0	0	0	0%
Framing of Plate	0	0	0	0	0	0	0	0	0	0	0	0	0	0%
Reject Expired	0	0	0	0	0	0	0	0	0	3	0	0	3	21%
Speed Not Determined	0	0	0	0	0	0	0	0	0	0	0	0	0	0%
Total:	13	8	6	11	9	3	6	7	6	11	1	9	14	100%
Summary Metrics														
Daily Average Vehicle Passes	0	0	0	0	0	0	0	0	0	0	0	0	0	0
Average Issued Speed	17	16	19	16	16	14	17	18	19	15	21	11	17	17
Average Issued Red Seconds	5.3	33.0	5.5	17.3	10.2	129.1	27.3	5.9	5.5	5.8	5.7	578.3	69.1	69.1
Citation / Violation Issuance Rate	38%	44%	37%	37%	36%	29%	24%	48%	33%	38%	56%	17%	36%	36%
Controllable Issuance Rate	54%	64%	65%	61%	73%	80%	60%	77%	68%	61%	90%	67%	68%	68%



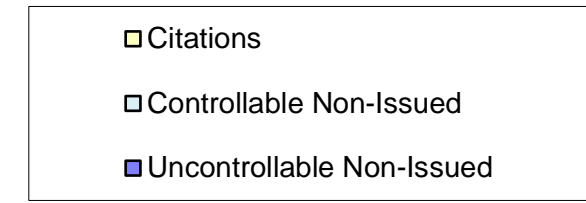
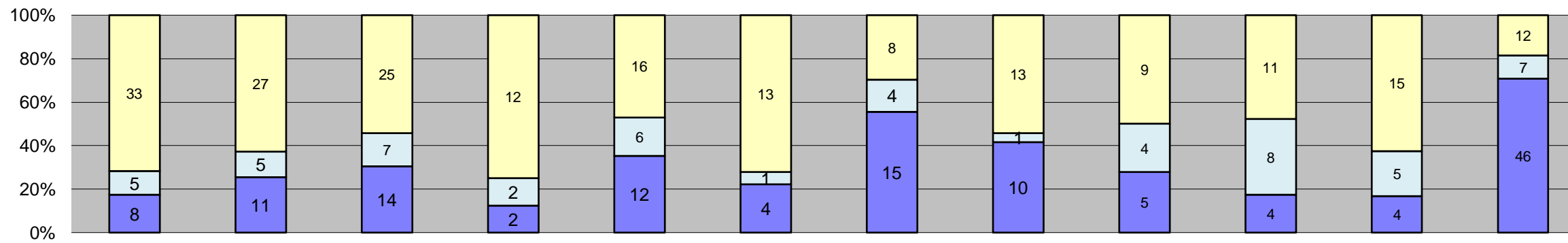
**Los Angeles County MTA Blue Line
Approach Summary Report
Location 1052: WB 130th St @ Willowbrook
Straight Through Movements**



Events	Year to Date Average													
	Jan-18	Feb-18	Mar-18	Apr-18	May-18	Jun-18	Jul-18	Aug-18	Sep-18	Oct-18	Nov-18	Dec-18	Quantity	%
Non-Violations	287	155	367	150	164	167	198	188	172	185	137	175	195	88%
Violations	20	27	26	20	32	29	22	18	13	26	15	62	26	12%
Total:	307	182	393	170	196	196	220	206	185	211	152	237	221	100%
Violations														
Uncontrollable Non-Issued	4	7	15	8	13	14	14	5	4	12	3	50	12	48%
Controllable Non-Issued	8	3	4	4	6	2	1	4	1	8	3	5	4	16%
Citations	8	17	7	8	13	13	7	9	8	6	9	7	9	36%
Total:	20	27	26	20	32	29	22	18	13	26	15	62	26	100%
Non-Violations														
Emergency Vehicle Non-Issuable	0	0	0	0	0	0	0	1	0	0	0	0	1	0%
Emergency Vehicle PD	0	0	1	0	0	0	0	0	0	0	0	0	1	0%
Intersection Control in Progress- PD	0	0	0	0	0	0	0	0	0	0	0	0	0	0%
Gate Down/ No Train	0	0	0	0	0	0	0	0	0	0	0	0	0	0%
No Violation Occurred	200	72	260	70	64	76	112	104	83	9	2	9	88	35%
Rear Axle Activation	0	0	0	0	0	0	0	0	0	0	0	0	0	0%
Right Turn- No Violation	0	0	0	0	0	0	0	0	0	0	0	0	0	0%
Test Shot	87	83	106	80	100	91	86	83	88	91	82	84	88	35%
Train Activation	0	0	0	0	0	0	0	0	0	85	53	82	73	29%
Amber Time Low	0	0	0	0	0	0	0	0	0	0	0	0	0	0%
Vehicle Stopped- PD	0	0	0	0	0	0	0	0	1	0	0	0	1	0%
Total:	287	155	367	150	164	167	198	188	172	185	137	175	253	100%
Uncontrollable Non-Issued Violations														
Administrative Dismissal	0	0	0	0	0	0	0	0	0	0	0	0	0	0%
Address/DOB/DOB/VIOLATION	0	0	0	0	0	0	0	0	0	0	0	0	0	0%
Fail	0	0	0	0	0	0	0	0	0	0	0	0	0	0%
Car Obstructed	0	0	1	0	0	1	0	0	0	1	0	3	2	3%
Conditions Beyond Control	0	0	0	0	0	0	0	0	0	0	0	0	0	0%
Driver Identity Unclear	2	2	0	0	3	0	0	1	0	2	0	1	2	4%
Driver Obstructed	0	1	0	0	0	0	0	0	0	2	0	3	2	5%
Exposed	0	0	0	0	0	0	0	0	0	0	0	0	0	0%
Emergency Vehicle Issue	0	0	0	0	0	0	0	0	0	0	0	0	0	0%
Glare on Plate	0	1	0	0	0	0	0	0	0	0	0	0	1	2%
Glare on Windshield	0	2	3	1	2	1	0	0	0	1	0	0	2	4%
Illegible Plate	0	0	0	0	0	0	0	0	0	0	0	0	0	0%
Interest of Justice- PD	0	0	0	0	0	0	0	0	0	0	0	15	15	34%
Image Quality- PD	0	0	0	0	0	0	0	0	0	0	1	0	1	2%
Issuance Criteria Not Met- PD	0	0	0	0	0	0	0	0	0	0	0	8	8	18%
No Warning Sign	0	0	0	0	0	0	0	0	0	0	0	0	0	0%
No Plate	2	1	3	6	4	6	5	1	1	4	2	9	4	8%
No Speed Captured	0	0	0	0	0	0	0	0	0	0	0	0	0	0%
Obstruction In Photo- PD	0	0	0	0	1	1	0	1	0	1	0	0	1	2%
Out of State	0	0	0	0	0	0	0	0	0	0	0	0	0	0%
Plate Obstructed	0	0	1	0	0	0	1	2	3	1	0	5	2	5%
Short Yellow- PD	0	0	0	0	0	0	0	0	0	0	0	0	0	0%
Third Party Damage	0	0	0	0	0	0	0	0	0	0	0	0	0	0%
TSB Epired	0	0	0	0	0	0	0	0	0	0	0	0	0	0%
TSB No Hit	0	0	7	1	3	5	8	0	0	0	0	6	5	11%
Total:	4	7	15	8	13	14	14	5	4	12	3	50	44	100%
Controllable Non-Issued Violations														
Conduent Expire	0	0	0	0	0	0	0	0	0	0	0	0	0	0%
Clarity of Plate	0	0	0	0	0	0	0	0	0	0	0	0	0	0%
Clarity of Driver	0	0	0	0	0	0	0	0	0	0	0	0	0	0%
Dark Interior	1	0	0	1	2	1	1	0	0	1	1	0	1	11%
Data Box Related- PD	0	0	0	0	0	0	0	0	0	0	0	0	0	0%
Data Box Data Error- PD	0	0	0	0	0	0	0	0	0	0	0	0	0	0%
Data Entry Error	4	1	1	0	1	0	0	1	0	0	0	0	2	16%
Exposed	0	0	0	0	0	0	0	0	0	0	0	0	0	0%
Equipment Malfunction	0	0	2	0	0	0	0	0	0	0	0	0	2	19%
Framing- PD	0	0	0	0	0	0	0	0	0	0	0	0	0	0%
Framing of Car	3	2	1	3	3	1	0	3	1	6	2	3	3	25%
Framing of Driver	0	0	0	0	0	0	0	0	0	0	0	0	2	19%
Operator Error	0	0	0	0	0	0	0	0	0	0	0	0	0	0%
Framing of Plate	0	0	0	0	0	0	0	0	0	0	0	0	0	0%
Reject Expired	0	0	0	0	0	0	0	0	0	1	0	0	1	10%
Speed Not Determined	0	0	0	0	0	0	0	0	0	0	0	0	0	0%
Total:	8	3	4	4	6	2	1	4	1	8	3	5	10	100%
Summary Metrics														
Daily Average Vehicle Passes	0	0	0	0	0	0	0	0	0	0	0	0	0	0
Average Issued Speed	15	16	15	15	12	14	16	14	15	14	17	10	14	
Average Issued Red Seconds	9.1	54.5	5.9	6.3	6.3	206.4	5.4	5.9	6.2	6.2	5.8	608.3	77.2	
Citation / Violation Issuance Rate	40%	63%	27%	40%	41%	45%	32%	50%	62%	23%	60%	11%	41%	
Controllable Issuance Rate	50%	85%	64%	67%	68%	87%	88%	69%	89%	43%	75%	58%	70%	



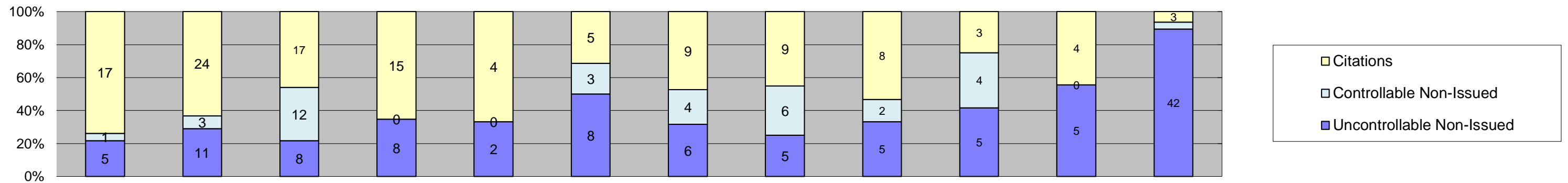
**Los Angeles County MTA Blue Line
Approach Summary Report
Location 1081: EB Stockwell @ Willowbrook
Straight Through Movements**



Events	Jan-18	Feb-18	Mar-18	Apr-18	May-18	Jun-18	Jul-18	Aug-18	Sep-18	Oct-18	Nov-18	Dec-18	Year to Date Average	
													Quantity	%
Non-Violations	160	112	343	95	128	94	82	130	95	100	94	82	126	80%
Violations	46	43	46	16	34	18	27	24	18	23	24	65	32	20%
Total:	206	155	389	111	162	112	109	154	113	123	118	147	158	100%
Violations														
Uncontrollable Non-Issued	8	11	14	2	12	4	15	10	5	4	4	46	11	35%
Controllable Non-Issued	5	5	7	2	6	1	4	1	4	8	5	7	5	14%
Citations	33	27	25	12	16	13	8	13	9	11	15	12	16	51%
Total:	46	43	46	16	34	18	27	24	18	23	24	65	32	100%
Non-Violations														
Emergency Vehicle Non-Issuable	0	0	0	0	0	0	0	0	1	0	1	0	1	1%
Emergency Vehicle PD	0	0	0	0	0	1	0	0	0	0	0	0	1	1%
Intersection Control in Progress- PD	0	0	0	0	0	0	0	0	0	0	0	0	0	0%
Gate Down/ No Train	0	0	0	0	0	0	0	0	0	0	0	0	0	0%
No Violation Occurred	75	32	245	14	37	0	2	45	5	0	0	0	57	37%
Rear Axle Activation	0	0	0	0	0	0	0	0	0	0	0	0	0	0%
Right Turn- No Violation	0	0	0	0	0	0	0	0	0	0	0	0	0	0%
Test Shot	85	80	98	81	90	93	80	85	89	82	84	81	86	55%
Train Activation	0	0	0	0	0	0	0	0	0	18	9	1	9	6%
Amber Time Low	0	0	0	0	0	0	0	0	0	0	0	0	0	0%
Vehicle Stopped- PD	0	0	0	0	1	0	0	0	0	0	0	0	1	1%
Total:	160	112	343	95	128	94	82	130	95	100	94	82	155	100%
Uncontrollable Non-Issued Violations														
Administrative Dismissal	0	0	0	0	0	0	0	0	0	0	0	0	0	0%
Address/CDL/DOB/Match Fail	0	0	0	0	0	0	0	0	1	0	0	0	1	3%
Car Obstructed	0	1	0	0	0	0	0	0	0	0	0	0	1	3%
Conditions Beyond Control	0	0	0	0	0	0	0	0	0	0	0	0	0	0%
Driver Identity Unclear	6	4	0	0	1	1	1	1	0	0	0	0	2	6%
Driver Obstructed	0	0	0	0	0	0	0	1	1	0	0	2	1	3%
Exposed	0	0	0	0	0	0	0	0	0	0	0	0	0	0%
Emergency Vehicle Issue	0	0	0	0	0	0	0	0	0	0	0	0	0	0%
Glare on Plate	2	0	1	0	0	0	0	0	0	0	0	1	1	3%
Glare on Windshield	0	0	0	0	1	0	3	1	1	1	0	0	1	4%
Illegible Plate	0	0	0	0	0	0	0	0	0	0	1	0	1	3%
Interest of Justice- PD	0	0	0	0	0	0	0	0	0	0	0	10	10	26%
Image Quality- PD	0	0	0	0	0	0	0	2	0	0	0	0	2	5%
Insurance Criteria Not Met- PD	0	0	0	0	0	0	0	0	0	0	0	5	5	13%
No Warning Sign	0	0	0	0	0	0	0	0	0	0	0	0	0	0%
No Plate	0	4	7	1	5	1	3	4	2	2	1	14	4	10%
No Speed Captured	0	0	0	0	0	0	0	0	0	0	0	0	0	0%
Obstruction In Photo- PD	0	0	0	0	1	0	0	0	0	0	1	0	1	3%
Out of State	0	0	0	0	0	0	0	0	0	1	0	0	1	3%
Plate Obstructed	0	2	2	0	0	0	1	1	0	0	1	1	1	3%
Short Yellow- PD	0	0	0	0	0	0	0	0	0	0	0	0	0	0%
Third Party Damage	0	0	0	0	0	0	0	0	0	0	0	0	0	0%
TSB Epired	0	0	0	0	0	0	0	0	0	0	0	0	0	0%
TSB No Hit	0	0	4	1	4	2	7	0	0	0	0	13	5	13%
Total:	8	11	14	2	12	4	15	10	5	4	4	46	39	100%
Controllable Non-Issued Violations														
Conduent Expire	0	0	0	0	0	0	0	0	0	0	0	0	0	0%
Clarity of Plate	0	0	0	0	0	0	0	0	0	0	0	0	0	0%
Clarity of Driver	0	0	0	0	0	0	0	0	0	0	0	0	0	0%
Dark Interior	0	0	0	0	1	0	0	0	1	0	0	0	1	11%
Data Box Related- PD	0	0	0	0	0	0	0	0	0	0	0	0	0	0%
Data Box Data Error- PD	0	0	0	0	0	0	0	0	0	0	0	0	0	0%
Data Entry Error	0	1	3	0	1	0	0	1	1	0	0	1	1	15%
Exposed	0	0	0	0	0	0	0	0	0	0	0	0	0	0%
Equipment Malfunction	0	0	0	0	0	0	0	0	0	0	0	0	0	0%
Framing- PD	0	0	0	0	0	0	0	0	0	0	0	0	0	0%
Framing of Car	5	4	4	2	4	1	3	0	1	7	5	6	4	42%
Framing of Driver	0	0	0	0	0	0	0	0	1	0	0	0	1	11%
Operator Error	0	0	0	0	0	0	0	0	0	0	0	0	0	0%
Framing of Plate	0	0	0	0	0	0	0	0	0	0	0	0	0	0%
Reject Expired	0	0	0	0	0	0	0	0	0	1	0	0	1	11%
Speed Not Determined	0	0	0	0	0	0	1	0	0	0	0	0	1	11%
Total:	5	5	7	2	6	1	4	1	4	8	5	7	9	100%
Summary Metrics														
Daily Average Vehicle Passes	0	0	0	0	0	0	0	0	0	0	0	0	0	0
Average Issued Speed	19	19	18	18	20	26	20	19	19	20	21	13	19	19
Average Issued Red Seconds	5.6	18.0	6.0	5.6	5.4	5.7	6.1	5.6	5.5	5.5	5.6	746.1	68.4	68.4
Citation / Violation Issuance Rate	72%	63%	54%	75%	47%	72%	30%	54%	50%	48%	63%	18%	54%	54%
Controllable Issuance Rate	87%	84%	78%	86%	73%	93%	67%	93%	69%	58%	75%	63%	77%	77%



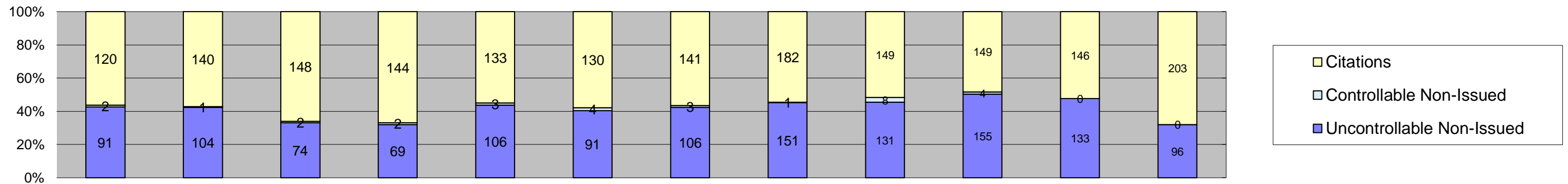
**Los Angeles County MTA Blue Line
Approach Summary Report
Location 1082: WB Stockwell @ Willowbrook
Straight Through Movements**



Events	Month												Year to Date Average	
	Jan-18	Feb-18	Mar-18	Apr-18	May-18	Jun-18	Jul-18	Aug-18	Sep-18	Oct-18	Nov-18	Dec-18	Quantity	%
Non-Violations	166	125	413	138	69	130	143	165	135	141	152	161	162	88%
Violations	23	38	37	23	6	16	19	20	15	12	9	47	22	12%
Total:	189	163	450	161	75	146	162	185	150	153	161	208	184	100%
Violations														
Uncontrollable Non-Issued	5	11	8	8	2	8	6	5	5	5	5	42	9	40%
Controllable Non-Issued	1	3	12	0	0	3	4	6	2	4	0	2	4	18%
Citations	17	24	17	15	4	5	9	9	8	3	4	3	10	43%
Total:	23	38	37	23	6	16	19	20	15	12	9	47	23	100%
Non-Violations														
Emergency Vehicle Non-Issuable	0	0	1	0	0	0	0	0	0	0	0	0	1	0%
Emergency Vehicle PD	0	0	0	0	0	1	0	1	0	0	0	0	1	0%
Intersection Control in Progress- PD	0	0	0	0	0	0	0	0	0	0	0	0	0	0%
Gate Down/ No Train	0	0	0	0	0	0	0	0	0	0	0	0	0	0%
No Violation Occurred	80	42	313	60	21	37	64	86	46	1	3	1	63	30%
Rear Axle Activation	0	0	0	0	0	0	0	0	0	0	0	0	0	0%
Right Turn- No Violation	0	0	0	0	0	0	0	0	0	0	0	0	0	0%
Test Shot	86	83	99	78	48	92	79	78	89	83	88	81	82	39%
Train Activation	0	0	0	0	0	0	0	0	0	57	61	79	66	31%
Amber Time Low	0	0	0	0	0	0	0	0	0	0	0	0	0	0%
Vehicle Stopped- PD	0	0	0	0	0	0	0	0	0	0	0	0	0	0%
Total:	166	125	413	138	69	130	143	165	135	141	152	161	213	100%
Uncontrollable Non-Issued Violations														
Administrative Dismissal	0	0	0	0	0	0	0	0	0	0	0	0	0	0%
Address/DOB/Driver's License	0	0	0	0	0	0	0	0	1	0	0	0	1	3%
Car Obstructed	0	0	0	0	0	0	0	0	0	0	0	0	0	0%
Conditions Beyond Control	0	0	0	0	0	0	0	0	0	0	0	0	0	0%
Driver Identity Unclear	0	2	0	1	0	2	0	0	0	0	1	0	2	4%
Driver Obstructed	1	1	0	0	0	0	0	0	0	0	0	0	1	3%
Exposed	0	0	0	0	0	0	0	0	0	0	0	0	0	0%
Emergency Vehicle Issue	0	0	0	0	0	0	0	0	0	0	0	0	0	0%
Glare on Plate	0	0	0	0	0	0	0	0	0	0	0	0	0	0%
Glare on Windshield	0	0	1	1	0	0	0	1	0	0	0	0	1	3%
Illegible Plate	0	0	0	0	0	0	0	0	0	1	0	0	1	3%
Interest of Justice- PD	0	0	0	0	0	0	0	0	0	0	0	14	14	39%
Image Quality- PD	0	0	0	0	0	0	0	1	0	0	0	0	1	3%
Insurance Criteria Not Met- PD	0	0	0	0	0	0	0	0	0	0	0	4	4	11%
No Warning Sign	0	0	0	0	0	0	0	0	0	0	0	0	0	0%
No Plate	4	7	4	6	0	5	3	1	4	2	2	16	5	14%
No Speed Captured	0	0	0	0	0	0	0	0	0	0	0	0	0	0%
Obstruction In Photo- PD	0	0	0	0	0	0	0	0	0	0	0	0	0	0%
Out of State	0	0	0	0	0	0	0	0	0	1	0	0	1	3%
Plate Obstructed	0	1	0	0	0	1	0	1	0	0	1	0	1	3%
Short Yellow- PD	0	0	0	0	0	0	0	0	0	0	0	0	0	0%
Third Party Damage	0	0	0	0	0	0	0	0	0	0	0	0	0	0%
TSB Expired	0	0	0	0	0	0	0	0	0	1	1	0	1	3%
TSB No Hit	0	0	3	0	2	0	3	1	0	0	0	8	3	9%
Total:	5	11	8	8	2	8	6	5	5	5	5	42	36	100%
Controllable Non-Issued Violations														
Conduent Expire	0	0	0	0	0	0	0	0	0	0	0	0	0	0%
Clarity of Plate	0	0	0	0	0	0	0	0	0	0	0	0	0	0%
Clarity of Driver	0	0	0	0	0	0	0	0	0	0	0	0	0	0%
Dark Interior	1	0	0	0	0	0	2	0	0	0	0	0	2	16%
Data Box Related- PD	0	0	0	0	0	0	0	0	0	0	0	0	0	0%
Data Box Data Error- PD	0	0	0	0	0	0	0	0	0	0	0	0	0	0%
Data Entry Error	0	0	5	0	0	0	0	0	0	0	0	1	3	31%
Exposed	0	0	0	0	0	0	0	0	0	0	0	0	0	0%
Equipment Malfunction	0	0	0	0	0	0	0	0	1	1	0	0	1	10%
Framing- PD	0	0	0	0	0	0	0	0	0	0	0	0	0	0%
Framing of Car	0	3	7	0	0	3	2	6	1	2	0	1	3	32%
Framing of Driver	0	0	0	0	0	0	0	0	0	0	0	0	0	0%
Operator Error	0	0	0	0	0	0	0	0	0	0	0	0	0	0%
Framing of Plate	0	0	0	0	0	0	0	0	0	0	0	0	0	0%
Reject Expired	0	0	0	0	0	0	0	0	0	1	0	0	1	10%
Speed Not Determined	0	0	0	0	0	0	0	0	0	0	0	0	0	0%
Total:	1	3	12	0	0	3	4	6	2	4	0	2	10	100%
Summary Metrics														
Daily Average Vehicle Passes	0	0	0	0	0	0	0	0	0	0	0	0	0	0
Average Issued Speed	21	18	20	18	22	17	21	21	18	23	20	13	19	19
Average Issued Red Seconds	5.4	47.4	5.4	162.5	5.9	5.6	6.2	5.6	6.0	5.4	42.0	761.1	88.2	88.2
Citation / Violation Issuance Rate	74%	63%	46%	65%	67%	31%	47%	45%	53%	25%	44%	6%	47%	47%
Controllable Issuance Rate	94%	89%	59%	100%	100%	63%	69%	60%	80%	43%	100%	60%	76%	76%



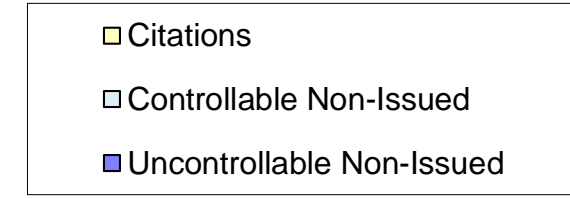
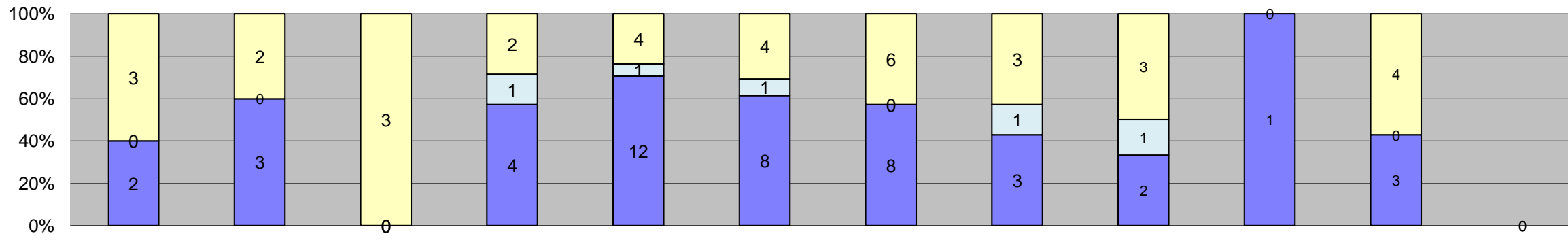
**Los Angeles County MTA Blue Line
Approach Summary Report
Location 2003: EB to NB Washington @ Los Angeles
Left Turn Movements**



Events	Year to Date Average													
	Jan-18	Feb-18	Mar-18	Apr-18	May-18	Jun-18	Jul-18	Aug-18	Sep-18	Oct-18	Nov-18	Dec-18	Quantity	%
Non-Violations	522	442	485	469	444	414	416	403	378	461	419	494	446	63%
Violations	213	245	224	215	242	225	250	334	288	308	279	299	260	37%
Total:	735	687	709	684	686	639	666	737	666	769	698	793	706	100%
Violations														
Uncontrollable Non-Issued	91	104	74	69	106	91	106	151	131	155	133	96	109	42%
Controllable Non-Issued	2	1	2	2	3	4	3	1	8	4	0	0	3	1%
Citations	120	140	148	144	133	130	141	182	149	149	146	203	149	57%
Total:	213	245	224	215	242	225	250	334	288	308	279	299	261	100%
Non-Violations														
Emergency Vehicle Non-Issuable	2	1	1	6	4	3	2	7	1	9	2	5	4	1%
Emergency Vehicle PD	0	1	0	0	0	0	0	1	0	0	0	0	1	0%
Intersection Control in Progress- PD	0	0	0	0	0	0	0	0	0	0	0	0	0	0%
Gate Down/ No Train	0	0	0	0	0	0	0	0	0	0	0	0	0	0%
No Violation Occurred	430	354	386	375	350	313	328	324	298	263	232	289	329	62%
Rear Axle Activation	0	1	0	0	0	0	0	0	0	0	0	3	2	0%
Right Turn- No Violation	0	0	0	0	0	0	0	0	0	0	0	0	0	0%
Test Shot	90	85	97	87	90	97	86	71	79	83	78	74	85	16%
Train Activation	0	0	0	0	0	0	0	0	0	106	107	123	112	21%
Amber Time Low	0	0	0	0	0	0	0	0	0	0	0	0	0	0%
Vehicle Stopped- PD	0	0	1	1	0	1	0	0	0	0	0	0	1	0%
Total:	522	442	485	469	444	414	416	403	378	461	419	494	533	100%
Uncontrollable Non-Issued Violations														
Administrative Dismissal	0	0	0	0	0	0	0	0	0	0	0	0	0	0%
Address/DOB/Driver's License	0	0	0	0	0	0	0	0	12	0	0	0	12	8%
Car Obstructed	5	5	2	2	3	1	1	4	9	6	8	1	4	3%
Conditions Beyond Control	0	0	9	0	0	0	0	0	0	0	0	0	9	6%
Driver Identity Unclear	10	13	0	4	9	4	3	16	5	11	7	9	8	5%
Driver Obstructed	0	3	2	4	4	0	3	4	8	4	5	4	4	3%
Exposed	0	0	0	0	0	0	0	0	0	0	0	0	0	0%
Emergency Vehicle Issue	0	0	0	0	0	0	0	1	1	4	2	0	2	1%
Glare on Plate	5	4	0	0	0	0	2	2	6	3	5	4	4	3%
Glare on Windshield	6	7	2	2	2	16	8	12	9	24	13	13	10	6%
Illegible Plate	4	5	7	4	6	7	4	9	5	14	13	7	7	5%
Interest of Justice- PD	0	0	0	0	0	0	0	0	0	0	0	0	0	0%
Image Quality- PD	0	1	0	2	4	3	1	4	1	3	6	2	3	2%
Insurance Criteria Not Met- PD	0	0	0	0	0	0	0	0	0	0	1	0	1	1%
No Warning Sign	0	0	0	0	0	0	0	0	0	0	0	0	0	0%
No Plate	43	52	26	32	32	33	40	66	60	53	61	38	45	29%
No Speed Captured	0	0	0	0	0	0	0	0	0	0	0	0	0	0%
Obstruction In Photo- PD	6	3	4	5	5	1	5	6	3	5	5	5	4	3%
Out of State	8	6	5	4	8	2	4	9	7	8	7	4	6	4%
Plate Obstructed	4	5	1	2	2	4	3	0	3	3	0	3	3	2%
Short Yellow- PD	0	0	0	0	0	0	0	0	0	0	0	0	0	0%
Third Party Damage	0	0	0	0	0	0	0	0	0	0	0	0	0	0%
TSB Epired	0	0	0	0	0	0	0	0	0	16	0	0	16	10%
TSB No Hit	0	0	16	8	31	20	32	18	2	1	0	6	15	10%
Total:	91	104	74	69	106	91	106	151	131	155	133	96	152	100%
Controllable Non-Issued Violations														
Conduent Expire	0	0	0	0	0	0	0	0	0	0	0	0	0	0%
Clarity of Plate	0	0	0	0	0	0	0	0	0	0	0	0	0	0%
Clarity of Driver	0	0	0	0	0	0	0	0	0	0	0	0	0	0%
Dark Interior	2	1	0	1	1	2	3	0	2	0	0	0	2	14%
Data Box Related- PD	0	0	0	0	0	0	0	0	0	0	0	0	0	0%
Data Box Data Error- PD	0	0	0	0	0	0	0	0	0	0	0	0	0	0%
Data Entry Error	0	0	1	0	0	1	0	1	3	0	0	0	2	12%
Exposed	0	0	0	0	0	0	0	0	0	0	0	0	0	0%
Equipment Malfunction	0	0	0	0	0	0	0	0	3	0	0	0	3	24%
Framing- PD	0	0	0	0	0	0	0	0	0	0	0	0	0	0%
Framing of Car	0	0	0	1	2	1	0	0	0	0	0	0	1	11%
Framing of Driver	0	0	0	0	0	0	0	0	0	0	0	0	0	0%
Operator Error	0	0	0	0	0	0	0	0	0	0	0	0	0	0%
Framing of Plate	0	0	0	0	0	0	0	0	0	0	0	0	0	0%
Reject Expired	0	0	0	0	0	0	0	0	0	4	0	0	4	32%
Speed Not Determined	0	0	1	0	0	0	0	0	0	0	0	0	1	8%
Total:	2	1	2	2	3	4	3	1	8	4	0	0	13	100%
Summary Metrics														
Daily Average Vehicle Passes	0	0	0	0	0	0	0	0	0	0	0	0	0	0
Average Issued Speed	19	19	19	18	19	19	18	18	18	18	18	18	18	18
Average Issued Red Seconds	6.0	10.0	11.2	13.8	13.3	12.0	9.2	5.3	3.3	3.7	8.4	11.9	9.0	9.0
Citation / Violation Issuance Rate	56%	57%	66%	67%	55%	58%	56%	54%	52%	48%	52%	68%	58%	58%
Controllable Issuance Rate	98%	99%	99%	99%	98%	97%	98%	99%	95%	97%	100%	100%	98%	98%



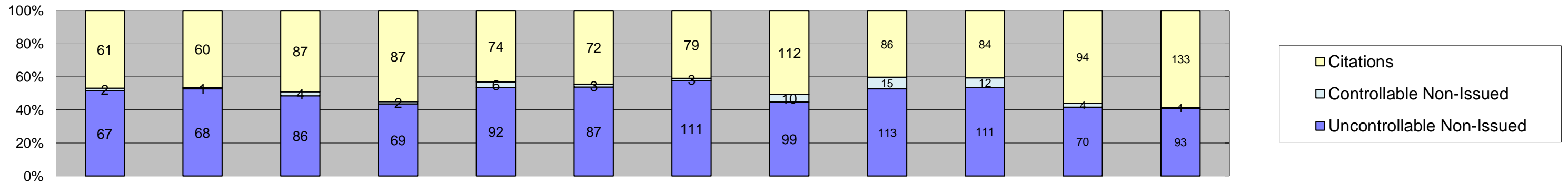
**Los Angeles County MTA Blue Line
Approach Summary Report
Location 2008 WB to SB Washington @ Los Angeles
Left Turn Movements**



Events	Jan-18	Feb-18	Mar-18	Apr-18	May-18	Jun-18	Jul-18	Aug-18	Sep-18	Oct-18	Nov-18	Dec-18	Year to Date Average	
													Quantity	%
Non-Violations	325	285	312	313	331	323	291	305	281	305	300	263	303	98%
Violations	5	5	3	7	17	13	14	7	6	1	7	0	8	2%
Total:	330	290	315	320	348	336	305	312	287	306	307	263	311	100%
Violations														
Uncontrollable Non-Issued	2	3	0	4	12	8	8	3	2	1	3	0	5	51%
Controllable Non-Issued	0	0	0	1	1	1	0	1	1	0	0	0	1	11%
Citations	3	2	3	2	4	4	6	3	3	0	4	0	3	38%
Total:	5	5	3	7	17	13	14	7	6	1	7	0	9	100%
Non-Violations														
Emergency Vehicle Non-Issuable	1	2	1	3	1	1	1	2	2	3	1	2	2	0%
Emergency Vehicle PD Intersection Control in Progress- PD	0	0	0	0	0	0	0	0	0	0	0	0	0	0%
Gate Down/ No Train	0	0	0	0	0	0	0	0	0	0	0	0	0	0%
No Violation Occurred	250	214	231	235	252	241	214	237	206	95	118	87	198	50%
Rear Axle Activation	0	0	0	0	0	0	0	0	0	0	0	0	0	0%
Right Turn- No Violation	0	0	0	0	0	0	0	0	0	0	0	0	0	0%
Test Shot	74	69	80	75	78	81	76	66	73	72	62	67	73	19%
Train Activation	0	0	0	0	0	0	0	0	0	135	119	107	120	31%
Amber Time Low	0	0	0	0	0	0	0	0	0	0	0	0	0	0%
Vehicle Stopped- PD	0	0	0	0	0	0	0	0	0	0	0	0	0	0%
Total:	325	285	312	313	331	323	291	305	281	305	300	263	393	100%
Uncontrollable Non-Issued Violations														
Administrative Dismissal	0	0	0	0	0	0	0	0	0	0	0	0	0	0%
Address/DOB/DOB/VIATCH	0	0	0	0	0	0	0	0	0	0	0	0	0	0%
Car Obstructed	0	2	0	0	0	0	0	0	0	0	0	0	2	15%
Conditions Beyond Control	0	0	0	0	0	0	0	0	0	0	0	0	0	0%
Driver Identity Unclear	0	0	0	0	1	1	0	1	0	0	0	0	1	7%
Driver Obstructed	1	0	0	0	1	4	0	0	0	0	0	0	2	15%
Exposed	0	0	0	0	0	0	0	0	0	0	0	0	0	0%
Emergency Vehicle Issue	0	0	0	0	0	0	0	0	0	0	0	0	0	0%
Glare on Plate	0	0	0	0	0	0	0	1	0	0	0	0	1	7%
Glare on Windshield	0	0	0	0	1	0	0	0	0	0	0	0	1	7%
Illegible Plate	0	0	0	0	0	1	0	0	0	0	0	0	1	7%
Interest of Justice- PD	0	0	0	0	0	0	0	0	0	0	0	0	0	0%
Image Quality- PD	0	0	0	0	0	0	0	0	0	0	0	0	0	0%
Insurance Criteria Not Met- PD	0	0	0	0	0	0	0	0	0	0	0	0	0	0%
No Warning Sign	0	0	0	0	0	0	0	0	0	0	0	0	0	0%
No Plate	1	1	0	3	4	1	4	1	2	1	3	0	2	15%
No Speed Captured	0	0	0	0	0	0	0	0	0	0	0	0	0	0%
Obstruction In Photo- PD	0	0	0	0	0	0	0	0	0	0	0	0	0	0%
Out of State	0	0	0	0	1	0	0	0	0	0	0	0	1	7%
Plate Obstructed	0	0	0	0	0	0	0	0	0	0	0	0	0	0%
Short Yellow- PD	0	0	0	0	0	0	0	0	0	0	0	0	0	0%
Third Party Damage	0	0	0	0	0	0	0	0	0	0	0	0	0	0%
TSB Expired	0	0	0	0	0	0	0	0	0	0	0	0	0	0%
TSB No Hit	0	0	0	1	4	1	4	0	0	0	0	0	3	18%
Total:	2	3	0	4	12	8	8	3	2	1	3	0	14	100%
Controllable Non-Issued Violations														
Conduent Expire	0	0	0	0	0	0	0	0	0	0	0	0	0	0%
Clarity of Plate	0	0	0	0	0	0	0	0	0	0	0	0	0	0%
Clarity of Driver	0	0	0	0	0	0	0	0	0	0	0	0	0	0%
Dark Interior	0	0	0	0	1	0	0	0	0	0	0	0	1	33%
Data Box Related- PD	0	0	0	0	0	0	0	0	0	0	0	0	0	0%
Data Box Data Error- PD	0	0	0	0	0	0	0	0	0	0	0	0	0	0%
Data Entry Error	0	0	0	1	0	1	0	1	0	0	0	0	1	33%
Exposed	0	0	0	0	0	0	0	0	0	0	0	0	0	0%
Equipment Malfunction	0	0	0	0	0	0	0	0	1	0	0	0	1	33%
Framing- PD	0	0	0	0	0	0	0	0	0	0	0	0	0	0%
Framing of Car	0	0	0	0	0	0	0	0	0	0	0	0	0	0%
Framing of Driver	0	0	0	0	0	0	0	0	0	0	0	0	0	0%
Operator Error	0	0	0	0	0	0	0	0	0	0	0	0	0	0%
Framing of Plate	0	0	0	0	0	0	0	0	0	0	0	0	0	0%
Reject Expired	0	0	0	0	0	0	0	0	0	0	0	0	0	0%
Speed Not Determined	0	0	0	0	0	0	0	0	0	0	0	0	0	0%
Total:	0	0	0	1	1	1	0	1	1	0	0	0	3	100%
Summary Metrics														
Daily Average Vehicle Passes	0	0	0	0	0	0	0	0	0	0	0	0	0	
Average Issued Speed	18	20	20	22	18	21	18	17	17	19	17	0	19	
Average Issued Red Seconds	251.7	0.6	0.5	0.5	139.4	93.2	7.3	194.1	0.5	43.7	22.0	0.0	68.5	
Citation / Violation Issuance Rate	60%	40%	100%	29%	24%	31%	43%	43%	50%	0%	57%	0%	48%	
Controllable Issuance Rate	100%	100%	100%	67%	80%	80%	100%	75%	75%	0%	100%	0%	88%	



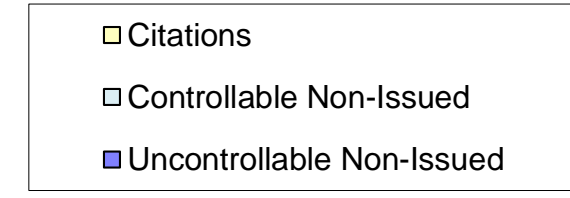
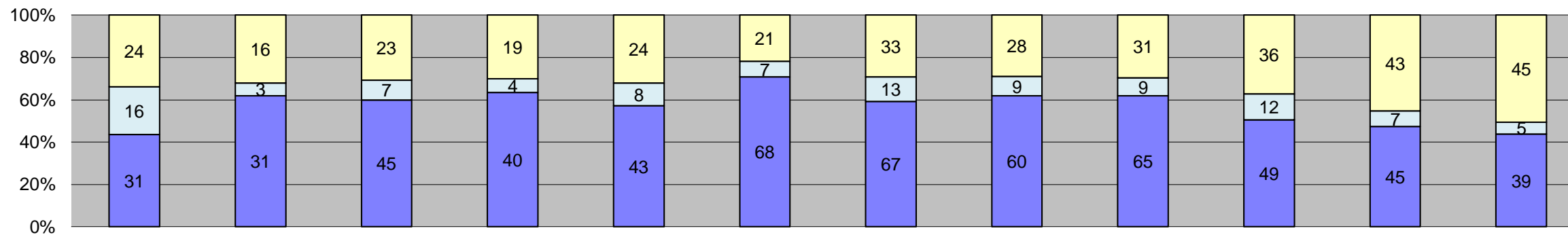
**Los Angeles County MTA Blue Line
Approach Summary Report
Location 2017: EB to NB Washington @ San Pedro
Left Turn Movements**



Events	Year to Date Average												Year to Date Average	
	Jan-18	Feb-18	Mar-18	Apr-18	May-18	Jun-18	Jul-18	Aug-18	Sep-18	Oct-18	Nov-18	Dec-18	Quantity	%
Non-Violations	489	506	516	473	491	446	447	460	404	458	424	416	461	72%
Violations	130	129	177	158	172	162	193	221	214	207	168	227	180	28%
Total:	619	635	693	631	663	608	640	681	618	665	592	643	641	100%
Violations														
Uncontrollable Non-Issued	67	68	86	69	92	87	111	99	113	111	70	93	89	49%
Controllable Non-Issued	2	1	4	2	6	3	3	10	15	12	4	1	5	3%
Citations	61	60	87	87	74	72	79	112	86	84	94	133	86	48%
Total:	130	129	177	158	172	162	193	221	214	207	168	227	180	100%
Non-Violations														
Emergency Vehicle Non-Issuable	2	4	2	2	4	3	1	3	3	3	1	1	2	0%
Emergency Vehicle PD	0	0	0	0	1	0	0	1	0	0	0	0	1	0%
Intersection Control in Progress- PD	0	0	0	0	0	1	0	0	0	0	0	0	1	0%
Gate Down/ No Train	0	0	0	0	0	0	0	0	0	0	0	0	0	0%
No Violation Occurred	395	412	417	381	400	352	365	377	327	327	204	187	332	57%
Rear Axle Activation	0	0	0	0	0	0	0	0	0	1	1	0	1	0%
Right Turn- No Violation	0	0	0	0	0	0	0	0	0	0	0	0	0	0%
Test Shot	92	90	97	90	85	90	81	78	74	80	76	84	85	14%
Train Activation	0	0	0	0	0	0	0	0	0	170	159	162	164	28%
Amber Time Low	0	0	0	0	0	0	0	0	0	0	0	0	0	0%
Vehicle Stopped- PD	0	0	0	0	1	0	0	1	0	0	0	0	1	0%
Total:	489	506	516	473	491	446	447	460	404	458	424	416	587	100%
Uncontrollable Non-Issued Violations														
Administrative Dismissal	0	0	0	0	0	0	0	0	0	0	0	0	0	0%
Address/DOB/Driver's License	0	0	0	0	0	0	0	0	15	0	0	0	15	12%
Car Obstructed	11	10	12	11	18	13	17	27	32	19	21	27	18	15%
Conditions Beyond Control	0	0	0	0	0	0	0	0	0	0	0	0	0	0%
Driver Identity Unclear	3	9	7	5	3	1	8	9	0	9	2	4	5	4%
Driver Obstructed	3	5	8	7	8	8	3	1	5	5	4	4	5	4%
Exposed	0	0	0	0	0	0	0	0	0	0	0	0	0	0%
Emergency Vehicle Issue	0	0	0	0	0	0	0	1	0	2	0	0	2	1%
Glare on Plate	7	3	3	3	0	2	3	7	7	3	4	3	4	3%
Glare on Windshield	6	11	9	6	2	5	11	3	10	7	4	2	6	5%
Illegible Plate	2	1	3	1	0	0	3	1	1	5	3	1	2	2%
Interest of Justice- PD	0	0	0	0	0	0	0	0	0	0	0	0	0	0%
Image Quality- PD	0	0	0	3	2	3	2	3	0	2	2	2	2	2%
Insurance Criteria Not Met- PD	0	0	0	0	0	0	0	0	0	0	0	0	0	0%
No Warning Sign	0	0	0	0	0	0	0	0	0	0	0	0	0	0%
No Plate	25	26	23	18	25	24	24	34	32	37	22	24	26	21%
No Speed Captured	0	0	0	0	0	0	0	0	0	0	0	0	0	0%
Obstruction In Photo- PD	3	2	2	5	3	3	1	2	4	1	3	1	3	2%
Out of State	2	0	1	4	0	6	3	2	2	5	5	2	3	3%
Plate Obstructed	5	1	1	2	2	3	2	3	4	2	0	8	3	2%
Short Yellow- PD	0	0	0	0	0	0	0	0	0	0	0	0	0	0%
Third Party Damage	0	0	0	0	0	0	0	0	0	0	0	0	0	0%
TSB Expired	0	0	0	0	0	0	0	0	0	14	0	0	14	11%
TSB No Hit	0	0	17	4	29	19	34	6	1	0	0	15	16	13%
Total:	67	68	86	69	92	87	111	99	113	111	70	93	125	100%
Controllable Non-Issued Violations														
Conduent Expire	0	0	0	0	0	0	0	0	0	0	0	0	0	0%
Clarity of Plate	0	0	0	0	0	0	0	0	0	0	0	0	0	0%
Clarity of Driver	0	0	0	0	0	0	0	0	0	0	0	0	0	0%
Dark Interior	0	0	2	1	2	3	2	5	1	0	0	0	2	11%
Data Box Related- PD	0	0	0	0	0	0	0	0	0	0	0	0	0	0%
Data Box Data Error- PD	0	0	0	0	0	0	0	0	0	0	0	0	0	0%
Data Entry Error	0	1	1	0	0	0	0	0	2	0	0	0	1	7%
Exposed	0	0	0	0	0	0	0	0	0	0	0	0	0	0%
Equipment Malfunction	0	0	0	0	0	0	0	0	1	0	0	0	1	5%
Framing- PD	0	0	0	0	0	0	0	0	0	0	0	0	0	0%
Framing of Car	0	0	1	0	4	0	0	0	0	4	2	0	3	14%
Framing of Driver	2	0	0	0	0	0	1	5	11	0	2	1	4	18%
Operator Error	0	0	0	0	0	0	0	0	0	0	0	0	0	0%
Framing of Plate	0	0	0	0	0	0	0	0	0	0	0	0	0	0%
Reject Expired	0	0	0	0	0	0	0	0	0	8	0	0	8	40%
Speed Not Determined	0	0	0	1	0	0	0	0	0	0	0	0	1	5%
Total:	2	1	4	2	6	3	3	10	15	12	4	1	20	100%
Summary Metrics														
Daily Average Vehicle Passes	0	0	0	0	0	0	0	0	0	0	0	0	0	
Average Issued Speed	19	18	19	19	19	19	18	18	18	18	17	19	18	
Average Issued Red Seconds	8.1	3.0	6.1	10.2	3.1	3.1	1.7	4.3	5.0	6.2	2.1	1.2	4.5	
Citation / Violation Issuance Rate	47%	47%	49%	55%	43%	44%	41%	51%	40%	41%	56%	59%	48%	
Controllable Issuance Rate	97%	98%	96%	98%	93%	96%	96%	92%	85%	88%	96%	99%	94%	



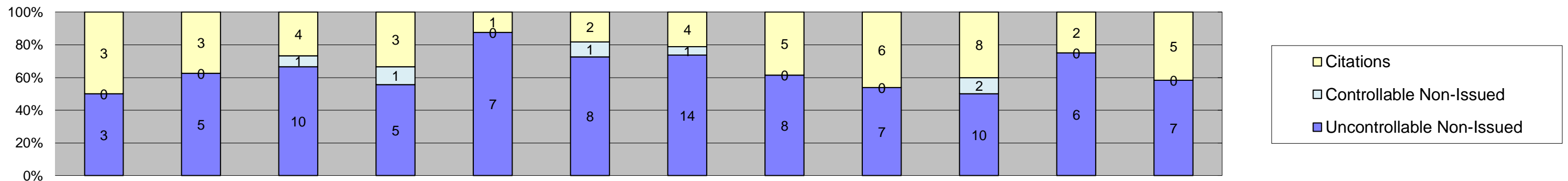
Los Angeles County MTA Blue Line
 Approach Summary Report
 Location 2018: WB to SB Washington @ San Pedro
 Left Turn Movements



Events	2018												Year to Date Average	
	Jan-18	Feb-18	Mar-18	Apr-18	May-18	Jun-18	Jul-18	Aug-18	Sep-18	Oct-18	Nov-18	Dec-18	Quantity	%
Non-Violations	336	322	358	284	293	340	299	298	277	319	307	322	313	79%
Violations	71	50	75	63	75	96	113	97	105	97	95	89	86	21%
Total:	407	372	433	347	368	436	412	395	382	416	402	411	398	100%
Violations														
Uncontrollable Non-Issued	31	31	45	40	43	68	67	60	65	49	45	39	49	57%
Controllable Non-Issued	16	3	7	4	8	7	13	9	9	12	7	5	8	10%
Citations	24	16	23	19	24	21	33	28	31	36	43	45	29	33%
Total:	71	50	75	63	75	96	113	97	105	97	95	89	86	100%
Non-Violations														
Emergency Vehicle Non-Issuable	4	4	5	2	2	4	4	6	0	2	2	5	4	1%
Emergency Vehicle PD	0	0	0	0	0	0	0	0	0	0	0	1	1	0%
Intersection Control in Progress- PD	0	0	0	0	0	0	0	1	0	0	0	0	1	0%
Gate Down/ No Train	0	0	0	0	0	0	0	0	0	0	0	0	0	0%
No Violation Occurred	249	205	233	194	205	246	215	219	198	58	69	65	180	41%
Rear Axle Activation	0	0	0	0	0	0	0	0	0	0	0	0	0	0%
Right Turn- No Violation	0	0	0	0	0	0	0	0	0	0	0	0	0	0%
Test Shot	83	113	120	88	86	89	80	72	79	81	83	80	88	20%
Train Activation	0	0	0	0	0	0	0	0	0	178	153	170	167	38%
Amber Time Low	0	0	0	0	0	0	0	0	0	0	0	0	0	0%
Vehicle Stopped- PD	0	0	0	0	0	1	0	0	0	0	0	1	1	0%
Total:	336	322	358	284	293	340	299	298	277	319	307	322	441	100%
Uncontrollable Non-Issued Violations														
Administrative Dismissal	0	0	0	0	0	0	0	0	0	0	0	0	0	0%
Address/DOB/Driver's License	0	0	0	0	0	0	0	0	8	0	0	0	8	12%
Car Obstructed	3	2	1	6	1	1	2	2	5	8	5	1	3	5%
Conditions Beyond Control	0	0	0	0	0	0	0	0	0	0	0	0	0	0%
Driver Identity Unclear	6	3	1	2	2	4	3	2	1	0	1	0	3	4%
Driver Obstructed	6	6	7	8	4	8	10	11	18	5	12	4	8	12%
Exposed	0	0	0	0	0	0	0	0	0	0	0	0	0	0%
Emergency Vehicle Issue	0	0	0	0	0	0	0	0	0	0	0	0	0	0%
Glare on Plate	0	2	2	1	5	6	8	8	12	4	1	1	5	7%
Glare on Windshield	4	5	6	6	3	11	7	6	1	0	1	5	5	8%
Illegible Plate	2	2	1	0	1	2	1	1	3	2	4	1	2	3%
Interest of Justice- PD	0	0	0	0	0	0	0	0	0	0	0	0	0	0%
Image Quality- PD	0	0	1	0	1	0	0	0	1	0	1	1	1	2%
Insurance Criteria Not Met- PD	0	0	0	0	0	0	0	0	0	0	1	0	1	2%
No Warning Sign	0	0	0	0	0	0	0	0	0	0	0	0	0	0%
No Plate	6	8	13	7	6	16	10	16	10	18	17	10	11	17%
No Speed Captured	0	0	0	0	0	0	0	0	0	0	0	0	0	0%
Obstruction In Photo- PD	2	1	2	3	3	5	5	3	3	3	0	3	3	5%
Out of State	0	0	0	2	1	0	0	3	0	2	2	3	2	3%
Plate Obstructed	2	2	1	1	2	2	2	2	2	4	0	2	2	3%
Short Yellow- PD	0	0	0	0	0	0	0	0	0	0	0	0	0	0%
Third Party Damage	0	0	0	0	0	0	0	0	0	0	0	0	0	0%
TSB Expired	0	0	0	0	0	0	0	0	0	3	0	0	3	5%
TSB No Hit	0	0	10	4	14	13	19	6	1	0	0	8	9	14%
Total:	31	31	45	40	43	68	67	60	65	49	45	39	66	100%
Controllable Non-Issued Violations														
Conduent Expire	0	0	0	0	0	0	0	0	0	0	0	0	0	0%
Clarity of Plate	0	0	0	0	0	0	0	0	0	0	0	0	0	0%
Clarity of Driver	0	0	0	0	0	0	0	0	0	0	0	0	0	0%
Dark Interior	4	0	0	2	0	3	4	1	2	0	3	1	3	13%
Data Box Related- PD	0	0	0	0	0	0	0	0	0	0	0	0	0	0%
Data Box Data Error- PD	0	0	0	0	0	0	0	0	0	0	0	0	0	0%
Data Entry Error	0	0	0	0	0	0	0	0	0	1	0	0	1	5%
Exposed	0	0	0	0	0	0	0	0	0	0	0	0	0	0%
Equipment Malfunction	0	2	0	1	0	0	0	0	0	0	0	0	2	8%
Framing- PD	0	0	0	0	0	0	0	0	0	0	0	0	0	0%
Framing of Car	11	1	7	1	8	4	8	8	7	4	4	4	6	30%
Framing of Driver	1	0	0	0	0	0	0	0	0	1	0	0	1	5%
Operator Error	0	0	0	0	0	0	0	0	0	0	0	0	0	0%
Framing of Plate	0	0	0	0	0	0	1	0	0	0	0	0	1	5%
Reject Expired	0	0	0	0	0	0	0	0	0	6	0	0	6	32%
Speed Not Determined	0	0	0	0	0	0	0	0	0	0	0	0	0	0%
Total:	16	3	7	4	8	7	13	9	9	12	7	5	19	100%
Summary Metrics													Year to Date Average	
Daily Average Vehicle Passes	0	0	0	0	0	0	0	0	0	0	0	0	0	
Average Issued Speed	19	18	18	19	18	18	18	18	17	18	18	18	18	
Average Issued Red Seconds	0.7	7.1	12.3	11.9	4.3	6.6	7.3	0.6	14.4	1.0	0.6	33.7	8.4	
Citation / Violation Issuance Rate	34%	32%	31%	30%	32%	22%	29%	29%	30%	37%	45%	51%	33%	
Controllable Issuance Rate	60%	84%	77%	83%	75%	75%	72%	76%	78%	75%	86%	90%	77%	



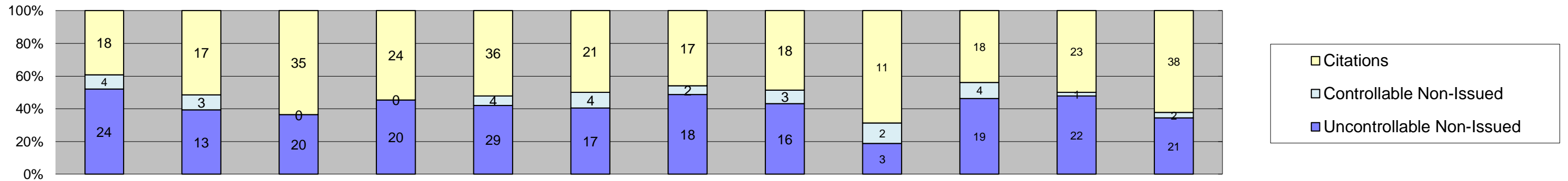
Los Angeles County MTA Blue Line
 Approach Summary Report
 Location 2027: EB to NB Washington @ Broadway
 Left Turn Movements



Events	Jan-18	Feb-18	Mar-18	Apr-18	May-18	Jun-18	Jul-18	Aug-18	Sep-18	Oct-18	Nov-18	Dec-18	Year to Date Average	
													Quantity	%
Non-Violations	524	472	580	508	562	478	441	475	454	543	520	479	503	98%
Violations	6	8	15	9	8	11	19	13	13	20	8	12	12	2%
Total:	530	480	595	517	570	489	460	488	467	563	528	491	515	100%
Violations														
Uncontrollable Non-Issued	3	5	10	5	7	8	14	8	7	10	6	7	8	60%
Controllable Non-Issued	0	0	1	1	0	1	1	0	0	2	0	0	1	10%
Citations	3	3	4	3	1	2	4	5	6	8	2	5	4	31%
Total:	6	8	15	9	8	11	19	13	13	20	8	12	13	100%
Non-Violations														
Emergency Vehicle Non-Issuable	2	2	1	0	1	3	2	2	2	0	2	1	2	0%
Emergency Vehicle PD Intersection Control in Progress- PD	0	0	0	0	0	0	0	0	0	0	0	0	0	0%
Gate Down/ No Train	0	0	0	0	0	0	0	0	0	0	0	0	0	0%
No Violation Occurred	442	391	490	431	480	383	362	405	381	355	367	311	400	69%
Rear Axle Activation	0	0	0	0	0	0	0	0	0	0	0	0	0	0%
Right Turn- No Violation	0	0	0	0	0	0	0	0	0	0	0	0	0	0%
Test Shot	80	79	89	77	81	92	77	68	71	71	66	70	77	13%
Train Activation	0	0	0	0	0	0	0	0	0	117	85	97	100	17%
Amber Time Low	0	0	0	0	0	0	0	0	0	0	0	0	0	0%
Vehicle Stopped- PD	0	0	0	0	0	0	0	0	0	0	0	0	0	0%
Total:	524	472	580	508	562	478	441	475	454	543	520	479	578	100%
Uncontrollable Non-Issued Violations														
Administrative Dismissal	0	0	0	0	0	0	0	0	0	0	0	0	0	0%
Address/DOB/DOB/MI/CI/Email	0	0	0	0	0	0	0	0	0	0	0	0	0	0%
Car Obstructed	0	0	0	0	0	0	1	1	0	0	1	1	1	6%
Conditions Beyond Control	0	0	0	0	0	0	0	0	0	0	0	0	0	0%
Driver Identity Unclear	0	1	0	0	0	0	1	0	0	0	0	1	1	6%
Driver Obstructed	0	0	1	0	1	0	1	0	1	2	0	0	1	7%
Exposed	0	0	0	0	0	0	0	0	0	0	0	0	0	0%
Emergency Vehicle Issue	0	0	0	0	0	0	0	1	0	1	1	0	1	6%
Glare on Plate	2	1	2	0	1	0	0	0	0	3	0	0	2	10%
Glare on Windshield	0	0	1	0	0	1	0	0	0	0	0	0	1	6%
Illegible Plate	0	2	3	1	0	2	2	2	2	1	0	4	2	12%
Interest of Justice- PD	0	0	0	0	0	0	0	0	0	0	0	0	0	0%
Image Quality- PD	0	0	0	0	0	0	0	0	0	0	1	0	1	6%
Insurance Criteria Not Met- PD	0	0	0	0	0	0	0	0	0	0	0	0	0	0%
No Warning Sign	0	0	0	0	0	0	0	0	0	0	0	0	0	0%
No Plate	1	1	2	3	5	3	7	2	3	1	2	1	3	15%
No Speed Captured	0	0	0	0	0	0	0	0	0	0	0	0	0	0%
Obstruction In Photo- PD	0	0	0	0	0	0	0	0	0	1	1	0	1	6%
Out of State	0	0	0	1	0	0	1	0	1	0	0	0	1	6%
Plate Obstructed	0	0	0	0	0	0	0	0	0	0	0	0	0	0%
Short Yellow- PD	0	0	0	0	0	0	0	0	0	0	0	0	0	0%
Third Party Damage	0	0	0	0	0	0	0	0	0	0	0	0	0	0%
TSB Expired	0	0	0	0	0	0	0	0	0	1	0	0	1	6%
TSB No Hit	0	0	1	0	0	2	1	2	0	0	0	0	2	9%
Total:	3	5	10	5	7	8	14	8	7	10	6	7	17	100%
Controllable Non-Issued Violations														
Conduent Expire	0	0	0	0	0	0	0	0	0	0	0	0	0	0%
Clarity of Plate	0	0	0	0	0	0	0	0	0	0	0	0	0	0%
Clarity of Driver	0	0	0	0	0	0	0	0	0	0	0	0	0	0%
Dark Interior	0	0	0	1	0	0	0	0	0	0	0	0	1	25%
Data Box Related- PD	0	0	0	0	0	0	0	0	0	0	0	0	0	0%
Data Box Data Error- PD	0	0	0	0	0	0	0	0	0	0	0	0	0	0%
Data Entry Error	0	0	1	0	0	0	1	0	0	1	0	0	1	25%
Exposed	0	0	0	0	0	0	0	0	0	0	0	0	0	0%
Equipment Malfunction	0	0	0	0	0	0	0	0	0	0	0	0	0	0%
Framing- PD	0	0	0	0	0	0	0	0	0	0	0	0	0	0%
Framing of Car	0	0	0	0	0	1	0	0	0	0	0	0	1	25%
Framing of Driver	0	0	0	0	0	0	0	0	0	0	0	0	0	0%
Operator Error	0	0	0	0	0	0	0	0	0	0	0	0	0	0%
Framing of Plate	0	0	0	0	0	0	0	0	0	0	0	0	0	0%
Reject Expired	0	0	0	0	0	0	0	0	0	1	0	0	1	25%
Speed Not Determined	0	0	0	0	0	0	0	0	0	0	0	0	0	0%
Total:	0	0	1	1	0	1	1	0	0	2	0	0	4	100%
Summary Metrics														
Daily Average Vehicle Passes	0	0	0	0	0	0	0	0	0	0	0	0	0	0
Average Issued Speed	18	15	21	16	0	17	17	21	20	20	19	20	19	19
Average Issued Red Seconds	31.7	14.5	24.3	173.2	0.0	53.8	214.9	222.9	21.8	70.5	46.8	53.8	84.4	84.4
Citation / Violation Issuance Rate	50%	38%	27%	33%	13%	18%	21%	38%	46%	40%	25%	42%	33%	33%
Controllable Issuance Rate	100%	100%	80%	75%	100%	67%	80%	100%	100%	80%	100%	100%	90%	90%



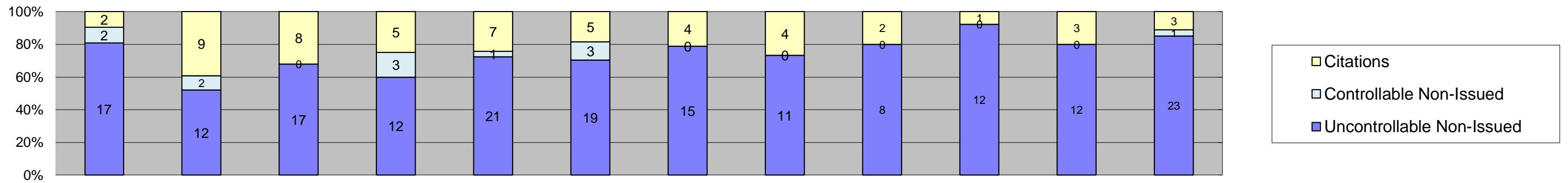
**Los Angeles County MTA Blue Line
Approach Summary Report
Location 2036: SB to EB Flower @ 18th St
Left Turn Movements**



Events	Month												Year to Date Average	
	Jan-18	Feb-18	Mar-18	Apr-18	May-18	Jun-18	Jul-18	Aug-18	Sep-18	Oct-18	Nov-18	Dec-18	Quantity	%
Non-Violations	1,034	969	1,024	980	1,002	1,029	942	1,017	949	1,005	1,015	1,105	1,006	96%
Violations	46	33	55	44	69	42	37	37	16	41	46	61	44	4%
Total:	1,080	1,002	1,079	1,024	1,071	1,071	979	1,054	965	1,046	1,061	1,166	1,050	100%
Violations														
Uncontrollable Non-Issued	24	13	20	20	29	17	18	16	3	19	22	21	19	42%
Controllable Non-Issued	4	3	0	0	4	4	2	3	2	4	1	2	3	7%
Citations	18	17	35	24	36	21	17	18	11	18	23	38	23	52%
Total:	46	33	55	44	69	42	37	37	16	41	46	61	44	100%
Non-Violations														
Emergency Vehicle Non-Issuable	0	0	0	0	0	0	0	0	1	0	0	0	1	0%
Emergency Vehicle PD Intersection Control in Progress- PD	0	0	0	0	0	0	0	0	0	0	0	0	0	0%
Gate Down/ No Train	0	0	0	0	0	0	0	0	0	0	0	0	0	0%
No Violation Occurred	915	840	889	827	869	880	783	866	811	284	271	409	720	50%
Rear Axle Activation	0	0	1	0	0	0	0	0	0	1	1	0	1	0%
Right Turn- No Violation	0	0	0	0	0	0	0	0	0	0	0	0	0	0%
Test Shot	119	129	134	153	133	149	159	151	137	125	195	116	142	10%
Train Activation	0	0	0	0	0	0	0	0	0	595	548	580	574	40%
Amber Time Low	0	0	0	0	0	0	0	0	0	0	0	0	0	0%
Vehicle Stopped- PD	0	0	0	0	0	0	0	0	0	0	0	0	0	0%
Total:	1,034	969	1,024	980	1,002	1,029	942	1,017	949	1,005	1,015	1,105	1,438	100%
Uncontrollable Non-Issued Violations														
Administrative Dismissal	0	0	0	0	0	0	0	0	0	0	0	0	0	0%
Address/DOB/DOB/VIOLATION	0	0	0	0	0	0	0	0	1	0	0	0	1	3%
Car Obstructed	0	0	0	0	1	1	0	0	0	1	0	1	1	3%
Conditions Beyond Control	0	0	0	0	0	0	0	0	0	0	0	0	0	0%
Driver Identity Unclear	2	0	1	1	1	0	0	2	0	0	0	0	1	4%
Driver Obstructed	1	0	6	2	5	4	3	2	0	3	3	3	3	9%
Exposed	0	0	0	0	0	0	0	0	0	0	0	0	0	0%
Emergency Vehicle Issue	0	0	0	0	0	0	0	0	0	0	0	0	0	0%
Glare on Plate	13	1	1	0	0	0	0	0	0	0	1	0	4	11%
Glare on Windshield	0	0	0	2	0	0	0	0	0	0	0	0	2	6%
Illegible Plate	0	0	0	0	0	0	0	0	0	0	0	0	0	0%
Interest of Justice- PD	0	0	0	0	0	0	0	0	0	0	0	0	0	0%
Image Quality- PD	0	0	0	0	0	0	0	0	0	0	2	0	2	6%
Insurance Criteria Not Met- PD	0	0	0	0	0	0	0	0	0	0	0	0	0	0%
No Warning Sign	0	0	0	0	0	0	0	0	0	0	0	0	0	0%
No Plate	7	9	6	11	10	9	7	8	2	9	15	8	8	24%
No Speed Captured	0	0	0	0	0	0	0	0	0	0	0	0	0	0%
Obstruction In Photo- PD	1	2	0	1	1	0	0	0	0	1	1	2	1	4%
Out of State	0	0	1	0	2	1	2	2	0	1	0	0	2	4%
Plate Obstructed	0	1	1	0	2	0	1	0	0	0	0	1	1	3%
Short Yellow- PD	0	0	0	0	0	0	0	0	0	0	0	0	0	0%
Third Party Damage	0	0	0	0	0	0	0	0	0	0	0	0	0	0%
TSB Expired	0	0	0	0	0	0	0	0	0	4	0	0	4	11%
TSB No Hit	0	0	4	3	7	2	5	2	0	0	0	6	4	12%
Total:	24	13	20	20	29	17	18	16	3	19	22	21	35	100%
Controllable Non-Issued Violations														
Conduent Expire	0	0	0	0	0	0	0	0	0	0	0	0	0	0%
Clarity of Plate	0	0	0	0	0	0	0	0	0	0	0	0	0	0%
Clarity of Driver	0	0	0	0	0	0	0	0	0	0	0	0	0	0%
Dark Interior	0	0	0	0	1	1	0	1	0	0	0	0	1	10%
Data Box Related- PD	0	0	0	0	0	0	0	0	0	0	0	0	0	0%
Data Box Data Error- PD	0	0	0	0	0	0	0	0	0	0	0	0	0	0%
Data Entry Error	0	1	0	0	0	2	0	0	1	1	0	0	1	13%
Exposed	0	0	0	0	0	0	0	0	0	0	0	0	0	0%
Equipment Malfunction	3	2	0	0	0	0	0	0	0	0	1	0	2	21%
Framing- PD	0	0	0	0	0	0	0	0	0	0	0	0	0	0%
Framing of Car	0	0	0	0	2	0	0	1	0	0	0	1	1	14%
Framing of Driver	1	0	0	0	1	1	1	1	1	1	0	1	1	10%
Operator Error	0	0	0	0	0	0	0	0	0	0	0	0	0	0%
Framing of Plate	0	0	0	0	0	0	0	0	0	0	0	0	0	0%
Reject Expired	0	0	0	0	0	0	0	0	0	2	0	0	2	21%
Speed Not Determined	0	0	0	0	0	0	1	0	0	0	0	0	1	10%
Total:	4	3	0	0	4	4	2	3	2	4	1	2	10	100%
Summary Metrics														
Daily Average Vehicle Passes	0	0	0	0	0	0	0	0	0	0	0	0	0	
Average Issued Speed	15	15	16	16	15	16	17	16	15	16	16	16	16	
Average Issued Red Seconds	2.4	5.0	3.9	3.7	7.5	4.7	3.0	6.5	7.7	3.2	4.3	2.8	4.6	
Citation / Violation Issuance Rate	39%	52%	64%	55%	52%	50%	46%	49%	69%	44%	50%	62%	53%	
Controllable Issuance Rate	82%	85%	100%	100%	90%	84%	89%	86%	85%	82%	96%	95%	89%	



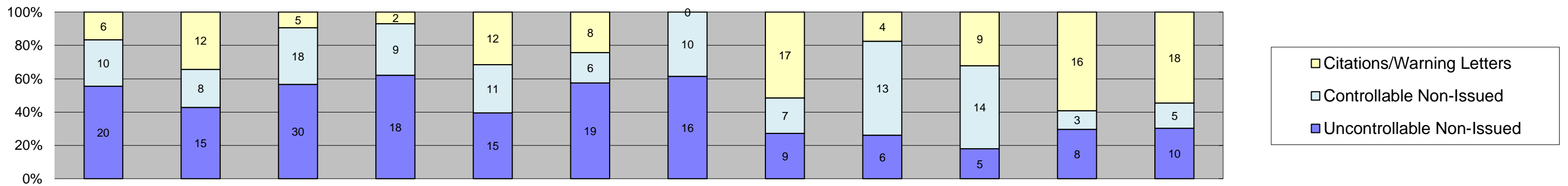
**Los Angeles County MTA Blue Line
Approach Summary Report
Location 2046: SB to EB Flower @ 10 Fwy Onramp
Left Turn Movements**



Events	Year to Date Average													
	Jan-18	Feb-18	Mar-18	Apr-18	May-18	Jun-18	Jul-18	Aug-18	Sep-18	Oct-18	Nov-18	Dec-18	Quantity	%
Non-Violations	631	556	654	575	649	678	569	571	560	723	610	667	620	97%
Violations	21	23	25	20	29	27	19	15	10	13	15	27	20	3%
Total:	652	579	679	595	678	705	588	586	570	736	625	694	641	100%
Violations														
Uncontrollable Non-Issued	17	12	17	12	21	19	15	11	8	12	12	23	15	70%
Controllable Non-Issued	2	2	0	3	1	3	0	0	0	0	0	1	2	9%
Citations	2	9	8	5	7	5	4	4	2	1	3	3	4	21%
Total:	21	23	25	20	29	27	19	15	10	13	15	27	21	100%
Non-Violations														
Emergency Vehicle Non-Issuable	0	0	0	0	0	0	0	0	0	0	0	0	0	0%
Emergency Vehicle PD Intersection Control in Progress- PD	0	0	0	0	0	0	0	0	0	0	0	0	0	0%
Gate Down/ No Train	0	0	0	0	0	0	0	0	0	0	0	0	0	0%
No Violation Occurred	548	470	563	491	551	560	482	493	475	129	119	130	418	43%
Rear Axle Activation	0	0	0	0	0	0	0	0	0	0	0	0	0	0%
Right Turn- No Violation	0	0	0	0	0	0	0	0	0	0	0	0	0	0%
Test Shot	83	85	91	84	98	118	87	78	85	85	84	78	88	9%
Train Activation	0	0	0	0	0	0	0	0	0	509	406	459	458	47%
Amber Time Low	0	0	0	0	0	0	0	0	0	0	0	0	0	0%
Vehicle Stopped- PD	0	1	0	0	0	0	0	0	0	0	1	0	1	0%
Total:	631	556	654	575	649	678	569	571	560	723	610	667	965	100%
Uncontrollable Non-Issued Violations														
Administrative Dismissal	0	0	0	0	0	0	0	0	0	0	0	0	0	0%
Address/DOB/DOB/VIATCH	0	0	0	0	0	0	0	0	0	0	0	0	0	0%
Car Obstructed	0	0	0	6	1	0	0	0	2	0	0	0	3	13%
Conditions Beyond Control	0	0	0	0	0	0	0	0	0	0	0	0	0	0%
Driver Identity Unclear	1	0	2	0	2	0	0	1	0	0	0	1	1	6%
Driver Obstructed	6	5	7	0	7	6	6	6	2	5	7	9	6	25%
Exposed	0	0	0	0	0	0	0	0	0	0	0	0	0	0%
Emergency Vehicle Issue	0	0	0	0	0	0	0	0	0	0	0	0	0	0%
Glare on Plate	2	1	0	0	0	0	1	1	0	0	1	0	1	5%
Glare on Windshield	1	0	1	1	1	0	0	0	0	1	0	0	1	4%
Illegible Plate	0	0	0	0	0	0	0	0	0	0	0	0	0	0%
Interest of Justice- PD	1	0	0	0	0	0	0	0	0	0	0	0	1	4%
Image Quality- PD	0	0	0	0	0	0	0	0	0	0	0	0	0	0%
Insurance Criteria Not Met- PD	0	0	0	0	0	0	0	0	0	0	0	0	0	0%
No Warning Sign	0	0	0	0	0	0	0	0	0	0	0	0	0	0%
No Plate	4	4	4	3	9	11	6	1	4	6	3	11	6	23%
No Speed Captured	0	0	0	0	0	0	0	0	0	0	0	0	0	0%
Obstruction In Photo- PD	2	2	1	0	0	0	1	1	0	0	1	0	1	6%
Out of State	0	0	1	2	0	1	0	1	0	0	0	1	1	5%
Plate Obstructed	0	0	0	0	0	0	1	0	0	0	0	0	1	4%
Short Yellow- PD	0	0	0	0	0	0	0	0	0	0	0	0	0	0%
Third Party Damage	0	0	0	0	0	0	0	0	0	0	0	0	0	0%
TSB Epired	0	0	0	0	0	0	0	0	0	0	0	0	0	0%
TSB No Hit	0	0	1	0	1	1	0	0	0	0	0	1	1	4%
Total:	17	12	17	12	21	19	15	11	8	12	12	23	24	100%
Controllable Non-Issued Violations														
Conduent Expire	0	0	0	0	0	0	0	0	0	0	0	0	0	0%
Clarity of Plate	0	0	0	0	0	0	0	0	0	0	0	0	0	0%
Clarity of Driver	0	0	0	0	0	0	0	0	0	0	0	0	0	0%
Dark Interior	0	2	0	3	0	3	0	0	0	0	0	1	2	43%
Data Box Related- PD	0	0	0	0	0	0	0	0	0	0	0	0	0	0%
Data Box Data Error- PD	0	0	0	0	0	0	0	0	0	0	0	0	0	0%
Data Entry Error	2	0	0	0	0	0	0	0	0	0	0	0	2	38%
Exposed	0	0	0	0	0	0	0	0	0	0	0	0	0	0%
Equipment Malfunction	0	0	0	0	0	0	0	0	0	0	0	0	0	0%
Framing- PD	0	0	0	0	0	0	0	0	0	0	0	0	0	0%
Framing of Car	0	0	0	0	0	0	0	0	0	0	0	0	0	0%
Framing of Driver	0	0	0	0	0	0	0	0	0	0	0	0	0	0%
Operator Error	0	0	0	0	0	0	0	0	0	0	0	0	0	0%
Framing of Plate	0	0	0	0	0	0	0	0	0	0	0	0	0	0%
Reject Expired	0	0	0	0	0	0	0	0	0	0	0	0	0	0%
Speed Not Determined	0	0	0	0	1	0	0	0	0	0	0	0	1	19%
Total:	2	2	0	3	1	3	0	0	0	0	0	1	5	100%
Summary Metrics														
Daily Average Vehicle Passes	0	0	0	0	0	0	0	0	0	0	0	0	0	
Average Issued Speed	16	17	19	21	20	17	18	20	17	0	17	15	18	
Average Issued Red Seconds	1.3	3.6	2.4	0.9	0.8	2.8	0.9	9.5	1.6	0.0	1.6	2.4	2.5	
Citation / Violation Issuance Rate	10%	39%	32%	25%	24%	19%	21%	27%	20%	8%	20%	11%	21%	
Controllable Issuance Rate	50%	82%	100%	63%	88%	63%	100%	100%	100%	100%	100%	75%	85%	



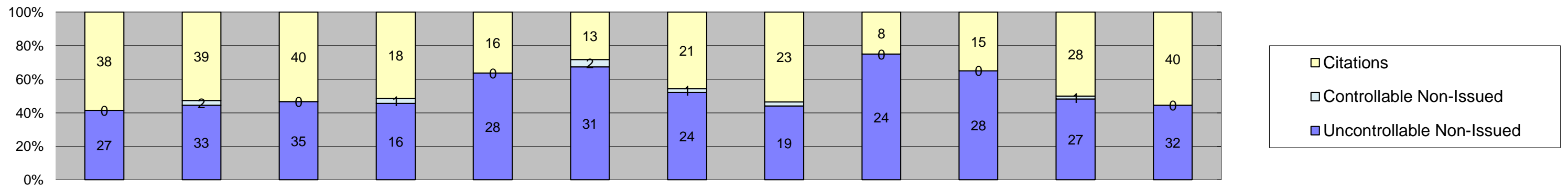
Los Angeles County MTA Blue Line
 Approach Summary Report
 Location 2054: WB Venice @ Flower
 Left Turn Movements



Events	Jan-18	Feb-18	Mar-18	Apr-18	May-18	Jun-18	Jul-18	Aug-18	Sep-18	Oct-18	Nov-18	Dec-18	Year to Date Average	
													Quantity	%
Non-Violations	128	121	133	139	142	161	137	123	122	113	120	114	129	80%
Violations	36	35	53	29	38	33	26	33	23	28	27	33	33	20%
Total:	164	156	186	168	180	194	163	156	145	141	147	147	162	100%
Violations														
Uncontrollable Non-Issued	20	15	30	18	15	19	16	9	6	5	8	10	14	42%
Controllable Non-Issued	10	8	18	9	11	6	10	7	13	14	3	5	10	28%
Citations/Warning Letters	6	12	5	2	12	8	0	17	4	9	16	18	10	29%
Total:	36	35	53	29	38	33	26	33	23	28	27	33	34	100%
Non-Violations														
Emergency Vehicle Non-Issuable	0	2	0	2	0	5	3	3	0	4	3	4	3	2%
Emergency Vehicle PD	0	0	0	0	0	0	0	0	0	0	0	0	0	0%
Intersection Control in Progress- PD	0	0	0	0	0	0	0	0	0	0	0	0	0	0%
Gate Down/ No Train	0	0	0	0	0	0	0	0	0	0	0	0	0	0%
No Violation Occurred	47	40	44	48	50	40	43	31	35	27	31	26	39	29%
Rear Axle Activation	0	0	0	0	0	1	0	0	0	0	0	0	1	1%
Right Turn- No Violation	0	0	0	0	0	0	0	0	0	0	0	0	0	0%
Test Shot	81	79	89	89	92	115	91	89	87	80	85	81	88	66%
Train Activation	0	0	0	0	0	0	0	0	0	2	1	3	2	2%
Amber Time Low	0	0	0	0	0	0	0	0	0	0	0	0	0	0%
Vehicle Stopped- PD	0	0	0	0	0	0	0	0	0	0	0	0	0	0%
Total:	128	121	133	139	142	161	137	123	122	113	120	114	133	100%
Uncontrollable Non-Issued Violations														
Administrative Dismissal	0	0	0	0	0	0	0	0	0	0	0	0	0	0%
Address/DOB/Driver's License	0	0	0	0	0	0	0	0	0	0	0	0	0	0%
Car Obstructed	1	0	1	0	0	1	1	1	1	0	0	1	1	4%
Conditions Beyond Control	0	0	0	0	0	0	0	0	0	0	0	0	0	0%
Driver Identity Unclear	2	2	0	0	2	0	2	0	0	1	1	0	2	6%
Driver Obstructed	1	0	1	0	0	0	0	0	0	0	1	0	1	4%
Exposed	0	0	0	0	0	0	0	0	0	0	0	0	0	0%
Emergency Vehicle Issue	0	0	0	0	0	0	0	0	0	0	0	0	0	0%
Glare on Plate	0	1	0	1	1	1	1	1	1	0	0	0	1	4%
Glare on Windshield	1	1	1	2	2	5	1	2	0	0	1	0	2	7%
Illegible Plate	0	0	0	0	0	0	0	0	0	0	0	0	0	0%
Interest of Justice- PD	0	0	0	0	0	0	0	0	0	0	0	0	0	0%
Image Quality- PD	1	0	0	0	0	0	0	0	0	0	1	0	1	4%
Issuance Criteria Not Met- PD	2	5	11	8	0	0	0	0	0	0	0	0	7	24%
No Warning Sign	0	0	0	0	0	0	0	0	0	0	0	0	0	0%
No Plate	8	6	6	5	4	9	6	3	4	2	3	6	5	19%
No Speed Captured	0	0	0	0	0	0	0	0	0	0	0	0	0	0%
Obstruction In Photo- PD	0	0	0	1	0	0	0	0	0	0	0	0	1	4%
Out of State	0	0	3	0	1	1	0	1	0	1	0	2	2	6%
Plate Obstructed	4	0	2	0	4	0	1	0	0	0	1	0	2	9%
Short Yellow- PD	0	0	0	0	0	0	0	0	0	0	0	0	0	0%
Third Party Damage	0	0	0	0	0	0	0	0	0	0	0	0	0	0%
TSB Expired	0	0	0	0	0	0	0	0	0	1	0	0	1	4%
TSB No Hit	0	0	5	1	1	2	4	1	0	0	0	1	2	8%
Total:	20	15	30	18	15	19	16	9	6	5	8	10	27	100%
Controllable Non-Issued Violations														
Conduent Expire	0	0	0	0	0	0	0	0	0	0	0	0	0	0%
Clarity of Plate	0	0	0	0	0	0	0	0	0	0	0	0	0	0%
Clarity of Driver	0	0	0	0	0	0	1	0	0	0	0	0	1	8%
Dark Interior	0	1	1	0	0	0	0	0	0	0	0	0	1	8%
Data Box Related- PD	0	0	0	0	0	0	0	0	0	0	0	0	0	0%
Data Box Data Error- PD	0	0	0	0	0	0	0	0	0	0	0	0	0	0%
Data Entry Error	0	0	0	0	0	1	0	0	0	0	0	0	1	8%
Exposed	0	0	0	0	0	0	0	0	0	0	0	0	0	0%
Equipment Malfunction	1	1	4	0	2	0	1	2	4	5	2	1	2	18%
Framing- PD	0	0	0	0	0	0	0	0	0	0	0	0	0	0%
Framing of Car	9	6	13	9	9	5	8	5	9	9	1	4	7	58%
Framing of Driver	0	0	0	0	0	0	0	0	0	0	0	0	0	0%
Operator Error	0	0	0	0	0	0	0	0	0	0	0	0	0	0%
Framing of Plate	0	0	0	0	0	0	0	0	0	0	0	0	0	0%
Reject Expired	0	0	0	0	0	0	0	0	0	0	0	0	0	0%
Speed Not Determined	0	0	0	0	0	0	0	0	0	0	0	0	0	0%
Total:	10	8	18	9	11	6	10	7	13	14	3	5	13	100%
Summary Metrics														
Daily Average Vehicle Passes	0	0	0	0	0	0	0	0	0	0	0	0	0	0
Average Issued Speed	25	25	23	20	26	24	22	21	22	21	21	23	23	23
Average Issued Red Seconds	0.5	2.6	0.6	0.3	0.5	2.1	20.2	1.5	0.5	2.1	0.6	2.2	2.8	2.8
Citation / Violation Issuance Rate	17%	34%	9%	7%	32%	24%	0%	52%	17%	32%	59%	55%	31%	31%
Controllable Issuance Rate	38%	60%	22%	18%	52%	57%	0%	71%	24%	39%	84%	78%	49%	49%



Los Angeles County MTA Blue Line
 Approach Summary Report
 Location 2056: SB to EB Flower @ Venice
 Left Turn Movements



Events	Jan-18	Feb-18	Mar-18	Apr-18	May-18	Jun-18	Jul-18	Aug-18	Sep-18	Oct-18	Nov-18	Dec-18	Year to Date Average	
													Quantity	%
Non-Violations	517	462	488	452	378	348	371	363	345	419	395	364	409	89%
Violations	65	74	75	35	44	46	46	43	32	43	56	72	53	11%
Total:	582	536	563	487	422	394	417	406	377	462	451	436	461	100%
Violations														
Uncontrollable Non-Issued	27	33	35	16	28	31	24	19	24	28	27	32	27	51%
Controllable Non-Issued	0	2	0	1	0	2	1	1	0	0	1	0	1	3%
Citations	38	39	40	18	16	13	21	23	8	15	28	40	25	47%
Total:	65	74	75	35	44	46	46	43	32	43	56	72	53	100%
Non-Violations														
Emergency Vehicle Non-Issuable	0	4	1	0	0	4	0	3	1	0	2	1	2	0%
Emergency Vehicle PD	0	0	0	0	0	0	0	0	0	0	1	0	1	0%
Intersection Control in Progress- PD	0	0	0	0	0	0	0	0	0	0	0	0	0	0%
Gate Down/ No Train	0	0	0	0	0	0	0	0	0	0	0	0	0	0%
No Violation Occurred	405	349	358	330	260	228	255	248	234	178	176	161	265	53%
Rear Axle Activation	0	0	0	0	0	0	0	0	0	0	0	0	0	0%
Right Turn- No Violation	0	0	0	0	0	0	0	0	0	0	0	0	0	0%
Test Shot	112	109	129	122	117	116	116	112	110	106	105	103	113	23%
Train Activation	0	0	0	0	0	0	0	0	0	135	111	99	115	23%
Amber Time Low	0	0	0	0	1	0	0	0	0	0	0	0	1	0%
Vehicle Stopped- PD	0	0	0	0	0	0	0	0	0	0	0	0	0	0%
Total:	517	462	488	452	378	348	371	363	345	419	395	364	498	100%
Uncontrollable Non-Issued Violations														
Administrative Dismissal	0	0	0	0	0	0	0	0	0	0	0	0	0	0%
Address/DOB/Driver's License	0	0	0	0	0	0	0	0	3	0	0	0	3	7%
Car Obstructed	1	2	0	0	0	0	1	0	0	0	0	1	1	3%
Conditions Beyond Control	0	0	0	0	0	0	0	0	0	0	0	0	0	0%
Driver Identity Unclear	1	2	1	0	2	0	0	1	0	1	0	0	1	3%
Driver Obstructed	4	3	1	4	0	3	0	0	1	4	5	3	3	8%
Exposed	0	0	0	0	0	0	0	0	0	0	0	0	0	0%
Emergency Vehicle Issue	0	0	0	0	0	0	0	0	0	0	0	0	0	0%
Glare on Plate	7	4	2	2	6	4	3	2	9	6	6	7	5	12%
Glare on Windshield	0	0	1	0	0	0	0	0	0	0	0	0	1	2%
Illegible Plate	0	0	0	0	0	0	0	0	0	0	0	0	0	0%
Interest of Justice- PD	0	0	0	0	0	0	0	0	0	0	0	0	0	0%
Image Quality- PD	0	0	1	0	0	0	0	0	0	0	0	0	1	2%
Issuance Criteria Not Met- PD	0	0	0	0	0	0	0	0	0	0	0	0	0	0%
No Warning Sign	0	0	0	0	0	0	0	0	0	0	0	0	0	0%
No Plate	9	17	17	6	14	19	10	12	9	11	13	15	13	31%
No Speed Captured	0	0	0	0	0	0	0	0	0	0	0	0	0	0%
Obstruction In Photo- PD	2	4	3	2	0	0	1	0	0	1	1	0	2	5%
Out of State	3	1	4	1	0	1	0	0	1	1	2	2	2	4%
Plate Obstructed	0	0	0	0	0	0	1	1	1	0	0	0	1	2%
Short Yellow- PD	0	0	0	0	0	0	0	0	0	0	0	0	0	0%
Third Party Damage	0	0	0	0	0	0	0	0	0	0	0	0	0	0%
TSB Expired	0	0	0	0	0	0	0	0	0	4	0	0	4	10%
TSB No Hit	0	0	5	1	6	4	8	3	0	0	0	4	4	11%
Total:	27	33	35	16	28	31	24	19	24	28	27	32	41	100%
Controllable Non-Issued Violations														
Conduent Expire	0	0	0	0	0	0	0	0	0	0	0	0	0	0%
Clarity of Plate	0	0	0	0	0	0	0	0	0	0	0	0	0	0%
Clarity of Driver	0	0	0	0	0	0	0	0	0	0	0	0	0	0%
Dark Interior	0	0	0	1	0	0	0	0	0	0	0	0	1	31%
Data Box Related- PD	0	0	0	0	0	0	0	0	0	0	0	0	0	0%
Data Box Data Error- PD	0	0	0	0	0	0	0	0	0	0	0	0	0	0%
Data Entry Error	0	1	0	0	0	2	1	1	0	0	0	0	1	38%
Exposed	0	0	0	0	0	0	0	0	0	0	0	0	0	0%
Equipment Malfunction	0	1	0	0	0	0	0	0	0	0	1	0	1	31%
Framing- PD	0	0	0	0	0	0	0	0	0	0	0	0	0	0%
Framing of Car	0	0	0	0	0	0	0	0	0	0	0	0	0	0%
Framing of Driver	0	0	0	0	0	0	0	0	0	0	0	0	0	0%
Operator Error	0	0	0	0	0	0	0	0	0	0	0	0	0	0%
Framing of Plate	0	0	0	0	0	0	0	0	0	0	0	0	0	0%
Reject Expired	0	0	0	0	0	0	0	0	0	0	0	0	0	0%
Speed Not Determined	0	0	0	0	0	0	0	0	0	0	0	0	0	0%
Total:	0	2	0	1	0	2	1	1	0	0	1	0	3	100%
Summary Metrics													Year to Date Average	
Daily Average Vehicle Passes	0	0	0	0	0	0	0	0	0	0	0	0	0	0
Average Issued Speed	18	19	18	20	19	20	18	19	18	20	19	19	19	19
Average Issued Red Seconds	54.7	12.9	56.8	21.2	7.2	11.5	81.5	110.9	106.1	2.4	23.5	57.1	45.5	45.5
Citation / Violation Issuance Rate	58%	53%	53%	51%	36%	28%	46%	53%	25%	35%	50%	56%	45%	45%
Controllable Issuance Rate	100%	95%	100%	95%	100%	87%	95%	96%	100%	100%	97%	100%	97%	97%

Direction	Location	Code	Movement	Days of Enforcement	Events	Violations	Citations	Yield*
WB	20th St @ Long Beach Blvd.	322	Straight	31	378	0	0	0.00
EB	Vernon Ave @ Long Beach	421	Straight	31	163	38	18	0.58
EB	Century Blvd. @ Grandee	821	Straight	31	179	61	23	0.74
WB	Century Blvd. @ Grandee	822	Straight	31	93	0	0	0.00
EB	103rd St @ Grandee	841	Straight	31	201	52	27	0.87
EB	119th St @ Willowbrook	981	Straight	31	538	186	85	2.74
WB	119th St @ Willowbrook	982	Straight	31	654	98	22	0.71
EB	130th @ Willowbrook	1051	Straight	31	208	107	18	0.58
WB	130th @ Willowbrook	1052	Straight	31	237	62	7	0.23
EB	Stockwell @ Willowbrook	1081	Straight	31	147	65	12	0.39
WB	Stockwell @ Willowbrook	1082	Straight	31	208	47	3	0.10
EB	Washington to NB Los Angeles	2003	Left	31	793	299	203	6.55
WB	Washington to SB Los Angeles	2008	Left	31	263	0	0	0.00
EB	Washington to NB San Pedro	2017	Left	31	643	227	133	4.29
WB	Washington to SB San Pedro	2018	Left	31	411	89	45	1.45
EB	Washington to NB Broadway	2027	Left	31	491	12	5	0.16
SB	Flower to EB 18th Street	2036	Left	31	1166	61	38	1.23
SB	Flower to EB 10 Fwy On Ramp	2046	Left	31	694	27	3	0.10
WB	Venice @ Flower	2054	Left	31	147	33	18	0.58
SB	Flower to EB Venice	2056	Left	31	436	72	40	1.29
Totals				31	8,050	1,536	700	22.58

*Yield is the number of citations issued per day of enforcement.