



Expo Line Monthly Report



Metro

Los Angeles County
Metropolitan Transportation Authority

December 2013



Prepared by: Xerox State and Local Solutions
Confidential

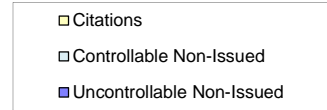
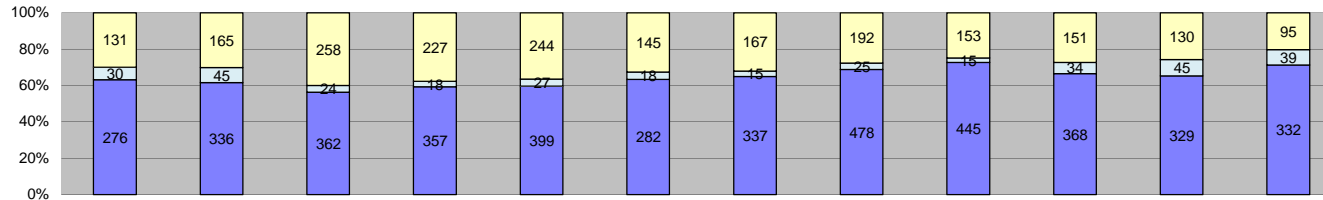


Table of Contents

Report Title	Page
<i>Approach Summary Report, All Locations.....</i>	3
<i>Approach Summary Report, Location 5008: SB to EB Flower @ Washington.....</i>	4
<i>Approach Summary Report, Location 5018: SB to WB Flower @ USC Trade Tech.....</i>	5
<i>Approach Summary Report, Location 5028: SB to EB Flower @ 23rd.....</i>	6
<i>Approach Summary Report, Location 5038: SB to EB Flower @ Adams.....</i>	7
<i>Approach Summary Report, Location 5048: SB to EB Flower @ 28th St.....</i>	8
<i>Approach Summary Report, Location 5058: Sb to EB Flower @ 30th St.....</i>	9
<i>Approach Summary Report, Location 5068: SB to EB Flower @ Jefferson.....</i>	10
<i>Approach Summary Report, Location 5077: EB to NB Exposition @ Watt.....</i>	11
<i>Approach Summary Report, Location 5079: WB to SB Exposition @ Bill Robertson.....</i>	12
<i>Approach Summary Report, Location 5087: EB to NB Exposition @ Vermont.....</i>	13
<i>Approach Summary Report, Location 5089: WB to SB Exposition @ Vermont.....</i>	14
<i>Approach Summary Report, Location 5097: EB to NB Exposition @ Raymond.....</i>	15
<i>Approach Summary Report, Location 5107: EB to NB Exposition @ Normandie.....</i>	16
<i>Approach Summary Report, Location 5109: WB to SB Exposition @ Normandie.....</i>	17
<i>Approach Summary Report, Location 5117: EB to NB Exposition @ Halldale.....</i>	18
<i>Approach Summary Report, Location 5119 WB to SB Exposition @ Denker.....</i>	19
<i>Approach Summary Report, Location 5127: EB to NB Exposition @ Western.....</i>	20
<i>Approach Summary Report, Location 5129: WB to SB Exposition @ Western.....</i>	21
<i>Approach Summary Report, Location 5137: EB to SB Exposition @ Crenshaw.....</i>	22
<i>Customer Service Report.....</i>	23
<i>Monthly Citation Yield Report.....</i>	24
<i>Disposition Summary Report.....</i>	25
<i>Performance Report.....</i>	26



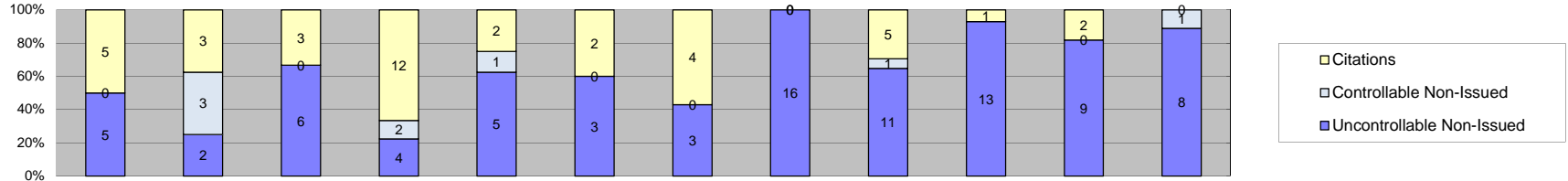
Los Angeles County MTA Expo Line Approach Summary Report All Locations



Events	2013												Year to Date Monthly Average		2012 Monthly Average	
	Jan-13	Feb-13	Mar-13	Apr-13	May-13	Jun-13	Jul-13	Aug-13	Sep-13	Oct-13	Nov-13	Dec-13	Quantity	%	Quantity	%
Non-Violations	4,020	4,322	6,222	4,280	5,223	6,661	3,646	3,811	4,231	4,509	3,941	4,126	4,583	89%	4,327	89%
Violations	437	546	644	602	670	445	519	695	613	553	504	466	558	11%	557	11%
Total:	4,457	4,868	6,866	4,882	5,893	7,106	4,165	4,506	4,844	5,062	4,445	4,592	5,141	100%	4,884	100%
Violations																
Uncontrollable Non-Issued	276	336	362	357	399	282	337	478	445	368	329	332	358	64%	371	67%
Controllable Non-Issued	30	45	24	18	27	18	15	25	15	34	45	39	28	5%	33	6%
Citations	131	165	258	227	244	145	167	192	153	151	130	95	172	31%	153	27%
Total:	437	546	644	602	670	445	519	695	613	553	504	466	558	69%	557	73%
Non-Violations																
Rear Axle Violation	9	5	11	0	2	0	0	0	27	15	13	26	14	0%	14	0%
Emergency Vehicle	28	48	31	24	33	24	47	32	45	36	28	22	33	1%	50	1%
Right Turn	0	0	0	0	0	0	0	0	0	0	0	0	0	0%	0	0%
No Violation Occurred	3,983	4,269	6,180	4,256	5,188	6,637	3,599	3,779	4,159	4,458	3,900	4,078	4,541	99%	4,263	99%
Total:	4,020	4,322	6,222	4,280	5,223	6,661	3,646	3,811	4,231	4,509	3,941	4,126	4,587	100%	4,327	100%
Uncontrollable Non-Issued Violations																
No Plate	50	46	55	47	59	38	45	55	63	40	47	46	49	13%	51	13%
Out of State Plate	7	8	12	8	5	7	5	9	9	7	7	4	7	2%	6	2%
Glare on Plate	3	1	2	0	3	6	1	2	3	0	3	0	3	1%	12	4%
Illegible Plate	43	34	36	44	44	30	67	84	38	49	34	26	44	12%	44	13%
Plate Obstructed	6	6	11	6	14	2	6	2	2	2	3	4	5	1%	8	2%
Windshield Glare	35	47	49	83	79	65	56	73	58	47	47	33	56	15%	40	12%
Driver Obstructed	23	21	25	32	23	12	15	43	38	23	26	32	26	7%	24	7%
Car Obstructed	3	7	10	3	6	3	2	3	1	2	1	5	4	1%	29	9%
No DMV Match Found	5	8	5	1	0	0	1	69	56	56	42	53	60	8%	42	12%
LASD Expired	0	0	0	0	1	0	0	1	0	0	0	0	1	0%	12	4%
LASD Return	98	136	157	125	165	119	139	132	176	128	118	128	135	37%	118	35%
Other	3	22	0	8	0	0	0	5	1	14	1	1	7	2%	3	1%
Total:	276	336	362	357	399	282	337	478	445	368	329	332	367	100%	336	100%
Controllable Non-Issued Violations																
Framing of Plate	0	0	0	0	0	0	0	0	1	0	0	0	1	3%	2	4%
Focus / Clarity of Plate	1	1	1	0	0	0	1	0	0	0	0	22	5	13%	3	5%
Dark Interior	21	31	14	15	16	12	10	8	7	12	16	7	14	36%	12	26%
Framing of Driver	0	0	0	0	0	0	0	0	0	2	1	1	1	3%	2	3%
Focus / Clarity of Driver	1	1	0	0	0	0	0	0	1	0	0	3	2	4%	3	6%
Framing of Car	1	0	0	0	2	0	0	0	0	0	0	0	2	4%	2	4%
Data/Operator Error	0	1	0	0	1	1	0	1	0	0	4	1	2	4%	5	11%
Exposure	3	4	4	3	5	0	4	12	2	3	1	1	4	10%	10	20%
Equipment Malfunction	3	7	3	0	3	5	0	3	5	11	23	4	7	17%	7	15%
ACS Expired	0	0	2	0	0	0	0	1	0	5	0	0	3	7%	2	4%
Total:	30	45	24	18	27	18	15	25	15	34	45	39	39	100%	48	100%
Summary Metrics																
Daily Average Vehicle Passes													Year to Date Monthly Average		2012 Monthly Average	
Average Issued Speed	15,259	12,688	14,150	16,058	18,143	19,422	21,025	22,610	20,470	22,682	22,066	19,098	18,639		15,365	
Average Issued Red Seconds	20	20	20	21	21	21	19	19	20	20	21	23	20		21	
Average Issued Red Seconds	48.3	70.8	35.1	23.5	56.8	33.7	40.7	55.1	41.2	21.7	17.3	29.4	39.5		57.3	
Citation / Violation Issuance Rate	30%	30%	40%	38%	36%	33%	32%	28%	25%	27%	26%	20%	30%		27%	
Controllable Issuance Rate	81%	79%	91%	93%	90%	89%	92%	88%	91%	82%	74%	71%	85%		83%	



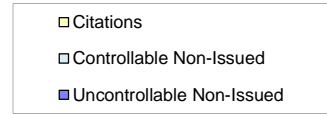
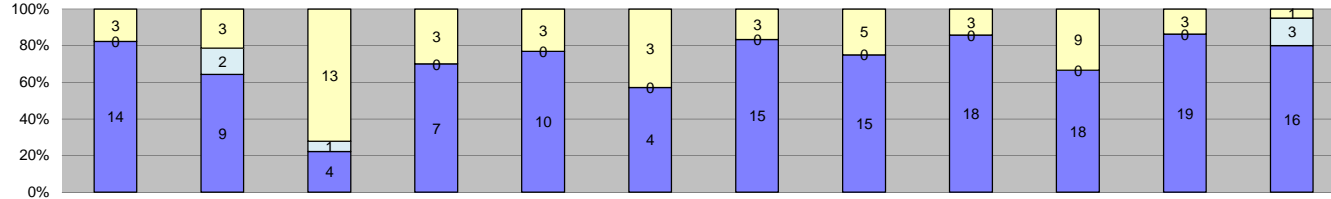
Los Angeles County MTA Expo Line
 Approach Summary Report
 Location 5008: SB to EB Flower @ Washington



Events	Jan-13	Feb-13	Mar-13	Apr-13	May-13	Jun-13	Jul-13	Aug-13	Sep-13	Oct-13	Nov-13	Dec-13	Year to Date Monthly Average		2012 Monthly Average	
	Quantity	Quantity	Quantity	Quantity	Quantity	Quantity	Quantity	Quantity	Quantity	Quantity	Quantity	Quantity	Quantity	%	%	%
Non-Violations	89	57	80	75	71	52	73	68	60	103	75	67	73	87%	82	91%
Violations	10	8	9	18	8	5	7	16	17	14	11	9	11	13%	8	9%
Total:	99	65	89	93	79	57	80	84	77	117	86	76	84	100%	90	100%
Violations																
Uncontrollable Non-Issued	5	2	6	4	5	3	3	16	11	13	9	8	7	56%	5	58%
Controllable Non-Issued	0	3	0	2	1	0	0	0	1	0	0	1	2	13%	1	14%
Citations	5	3	3	12	2	2	4	0	5	1	2	0	4	31%	3	28%
Total:	10	8	9	18	8	5	7	16	17	14	11	9	13	69%	9	72%
Non-Violations																
Rear Axle Violation	0	0	0	0	0	0	0	0	0	0	0	0	0	0%	1	1%
Emergency Vehicle	5	0	3	0	2	1	4	4	5	2	1	1	3	4%	3	3%
Right Turn	0	0	0	0	0	0	0	0	0	0	0	0	0	0%	0	0%
No Violation Occurred	84	57	77	75	69	51	69	64	55	101	74	66	70	96%	80	96%
Total:	89	57	80	75	71	52	73	68	60	103	75	67	73	100%	83	100%
Uncontrollable Non-Issued Violations																
No Plate	2	1	0	3	4	1	1	1	4	1	2	2	2	14%	2	11%
Out of State Plate	0	0	0	0	0	0	0	0	0	0	0	1	1	7%	0	0%
Glare on Plate	0	0	0	0	0	0	0	1	0	0	0	0	1	7%	1	8%
Illegible Plate	2	0	2	0	0	0	1	2	0	2	1	2	2	12%	1	9%
Plate Obstructed	0	0	0	0	0	0	0	0	0	0	0	0	0	0%	1	8%
Windshield Glare	1	0	1	0	0	0	1	1	1	0	0	0	1	7%	0	0%
Driver Obstructed	0	0	0	1	0	1	0	1	0	1	1	0	1	7%	1	8%
Car Obstructed	0	1	0	0	0	0	0	0	0	0	0	0	1	7%	5	38%
No DMV Match Found	0	0	1	0	0	0	0	8	5	7	4	3	5	32%	1	10%
LASD Expired	0	0	0	0	0	0	0	0	0	0	0	0	0	0%	1	8%
LASD Return	0	0	2	0	1	1	0	2	1	2	1	0	1	10%	2	12%
Other	0	0	0	0	0	0	0	0	0	0	0	0	0	0%	0	0%
Total:	5	2	6	4	5	3	3	16	11	13	9	8	15	100%	13	100%
Controllable Non-Issued Violations																
Framing of Plate	0	0	0	0	0	0	0	0	0	0	0	0	0	0%	0	0%
Focus / Clarity of Plate	0	0	0	0	0	0	0	0	0	0	0	0	0	0%	0	0%
Dark Interior	0	0	0	0	1	0	0	0	0	0	0	0	1	22%	1	33%
Framing of Driver	0	0	0	0	0	0	0	0	0	0	0	0	0	0%	0	0%
Focus / Clarity of Driver	0	0	0	0	0	0	0	0	0	0	0	0	0	0%	0	0%
Framing of Car	0	0	0	0	0	0	0	0	0	0	0	0	0	0%	1	33%
Data/Operator Error	0	0	0	0	0	0	0	0	0	0	0	0	0	0%	0	0%
Exposure	0	0	0	2	0	0	0	0	1	0	0	0	2	33%	1	33%
Equipment Malfunction	0	3	0	0	0	0	0	0	0	0	0	1	2	44%	0	0%
ACS Expired	0	0	0	0	0	0	0	0	0	0	0	0	0	0%	0	0%
Total:	0	3	0	2	1	0	0	0	1	0	0	1	5	100%	3	100%
Summary Metrics																
Daily Average Vehicle Passes	557	451	581	621	642	752	819	672	752	833	651	624	Year to Date Monthly Average		2012 Monthly Average	
Average Issued Speed	25	18	22	22	22	21	20	0	23	14	22	0	663		568	
Average Issued Red Seconds	0.4	45.0	0.2	12.7	9.1	8.9	1.2	0	60.0	65.2	0.7	0	20.3		7.9	
Citation / Violation Issuance Rate	50%	38%	33%	67%	25%	40%	57%	0%	29%	7%	18%	0%	36%		36%	
Controllable Issuance Rate	100%	50%	100%	86%	67%	100%	100%	0%	83%	100%	100%	0%	89%		92%	



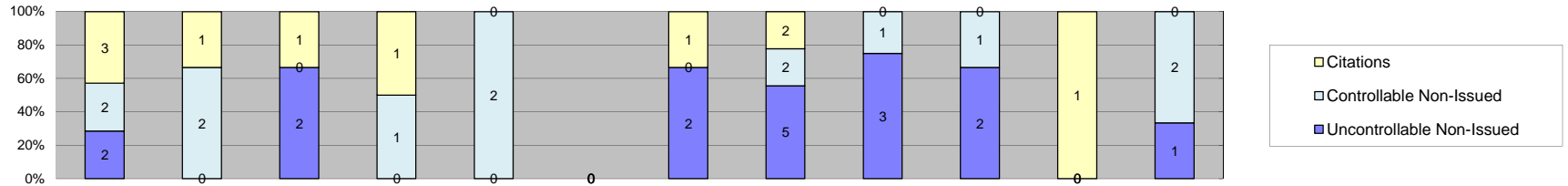
Los Angeles County MTA Expo Line
 Approach Summary Report
 Location 5018: SB to WB Flower @ USC Trade Tech



Events	Jan-13	Feb-13	Mar-13	Apr-13	May-13	Jun-13	Jul-13	Aug-13	Sep-13	Oct-13	Nov-13	Dec-13	Year to Date Monthly Average		2012 Monthly Average	
													Quantity	%	Quantity	%
Non-Violations	53	68	41	42	44	29	50	51	75	77	67	67	55	76%	75	75%
Violations	17	14	18	10	13	7	18	20	21	27	22	20	17	24%	25	25%
Total:	70	82	59	52	57	36	68	71	96	104	89	87	73	100%	100	100%
Violations																
Uncontrollable Non-Issued	14	9	4	7	10	4	15	15	18	18	19	16	12	66%	16	61%
Controllable Non-Issued	0	2	1	0	0	0	0	0	0	0	0	3	2	11%	1	4%
Citations	3	3	13	3	3	3	3	5	3	9	3	1	4	23%	9	35%
Total:	17	14	18	10	13	7	18	20	21	27	22	20	19	77%	26	65%
Non-Violations																
Rear Axle Violation	0	0	0	0	0	0	0	0	0	0	0	0	0	0%	0	0%
Emergency Vehicle	3	3	2	0	2	1	3	1	2	1	1	1	2	3%	3	4%
Right Turn	0	0	0	0	0	0	0	0	0	0	0	0	0	0%	0	0%
No Violation Occurred	50	65	39	42	42	28	47	50	73	76	66	66	54	97%	73	96%
Total:	53	68	41	42	44	29	50	51	75	77	67	67	55	100%	76	100%
Uncontrollable Non-Issued Violations																
No Plate	6	2	1	1	1	2	3	0	3	2	1	3	2	12%	5	19%
Out of State Plate	1	0	1	0	0	0	0	0	0	1	1	0	1	5%	1	7%
Glare on Plate	0	0	0	0	1	2	0	1	0	0	2	0	2	8%	3	15%
Illegible Plate	1	0	0	2	1	0	6	7	4	4	7	3	4	20%	3	12%
Plate Obstructed	0	1	0	0	0	0	0	0	1	0	0	0	1	5%	1	5%
Windshield Glare	1	1	0	1	1	0	0	0	1	2	1	0	1	6%	2	9%
Driver Obstructed	3	1	1	2	3	0	1	3	5	2	4	4	3	14%	4	19%
Car Obstructed	0	0	0	0	1	0	0	0	0	0	0	1	1	5%	2	10%
No DMV Match Found	0	1	0	0	0	0	0	3	2	2	0	2	2	11%	1	7%
LASD Expired	0	0	0	0	0	0	0	0	0	0	0	0	0	0%	1	5%
LASD Return	2	3	1	1	2	0	5	1	2	5	3	3	3	13%	2	12%
Other	0	0	0	0	0	0	0	0	0	0	0	0	0	0%	0	0%
Total:	14	9	4	7	10	4	15	15	18	18	19	16	19	100%	20	100%
Controllable Non-Issued Violations																
Framing of Plate	0	0	0	0	0	0	0	0	0	0	0	0	0	0%	0	0%
Focus / Clarity of Plate	0	0	0	0	0	0	0	0	0	0	0	3	3	50%	1	33%
Dark Interior	0	1	0	0	0	0	0	0	0	0	0	0	1	17%	1	33%
Framing of Driver	0	0	0	0	0	0	0	0	0	0	0	0	0	0%	0	0%
Focus / Clarity of Driver	0	0	0	0	0	0	0	0	0	0	0	0	0	0%	0	0%
Framing of Car	0	0	0	0	0	0	0	0	0	0	0	0	0	0%	0	0%
Data/Operator Error	0	1	0	0	0	0	0	0	0	0	0	0	1	17%	0	0%
Exposure	0	0	1	0	0	0	0	0	0	0	0	0	1	17%	1	33%
Equipment Malfunction	0	0	0	0	0	0	0	0	0	0	0	0	0	0%	0	0%
ACS Expired	0	0	0	0	0	0	0	0	0	0	0	0	0	0%	0	0%
Total:	0	2	1	0	0	0	0	0	0	0	0	3	6	100%	3	100%
Summary Metrics																
Daily Average Vehicle Passes	192	463	458	446	475	509	582	653	508	541	615	446	Year to Date Monthly Average		2012 Monthly Average	
Average Issued Speed	18	21	20	22	18	17	20	16	21	20	20	19	491		437	
Average Issued Red Seconds	25.1	22.1	23.0	0.9	46.5	16.4	10.0	23.6	4.0	16.5	24.8	70.5	23.6		33.3	
Citation / Violation Issuance Rate	18%	21%	72%	30%	23%	43%	17%	25%	14%	33%	14%	5%	26%		35%	
Controllable Issuance Rate	100%	60%	93%	100%	100%	100%	100%	100%	100%	100%	100%	25%	90%		97%	



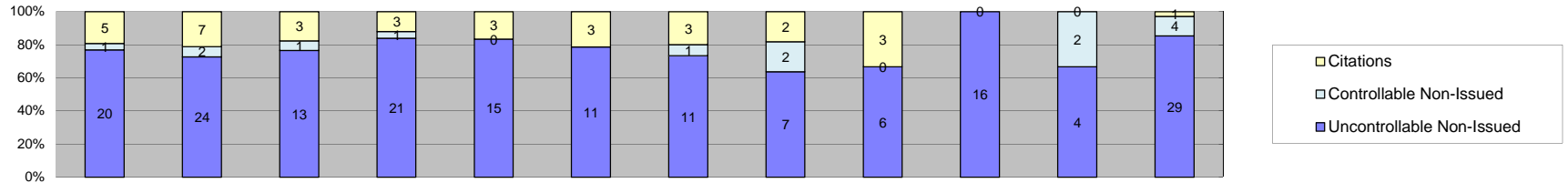
Los Angeles County MTA Expo Line
 Approach Summary Report
 Location 5028: SB to EB Flower @ 23rd



Events	Jan-13	Feb-13	Mar-13	Apr-13	May-13	Jun-13	Jul-13	Aug-13	Sep-13	Oct-13	Nov-13	Dec-13	Year to Date Monthly Average		2012 Monthly Average	
													Quantity	%	Quantity	%
Non-Violations	1,002	1,179	938	732	658	380	547	835	904	918	812	764	806	100%	1,303	99%
Violations	7	3	3	2	2	0	3	9	4	3	1	3	4	0%	18	1%
Total:	1,009	1,182	941	734	660	380	550	844	908	921	813	767	809	100%	1,322	100%
Violations																
Uncontrollable Non-Issued	2	0	2	0	0	0	2	5	3	2	0	1	2	44%	15	75%
Controllable Non-Issued	2	2	0	1	2	0	0	2	1	1	0	2	2	30%	4	20%
Citations	3	1	1	1	0	0	1	2	0	0	1	0	1	26%	1	5%
Total:	7	3	3	2	2	0	3	9	4	3	1	3	5	74%	19	95%
Non-Violations																
Rear Axle Violation	0	0	0	0	0	0	0	0	0	0	0	0	0	0%	0	0%
Emergency Vehicle	0	1	0	1	1	0	0	0	2	0	0	1	1	0%	2	0%
Right Turn	0	0	0	0	0	0	0	0	0	0	0	0	0	0%	0	0%
No Violation Occurred	1,002	1,178	938	731	657	380	547	835	902	918	812	763	805	100%	1,303	100%
Total:	1,002	1,179	938	732	658	380	547	835	904	918	812	764	806	100%	1,304	100%
Uncontrollable Non-Issued Violations																
No Plate	1	0	2	0	0	0	1	1	0	0	0	0	1	15%	1	6%
Out of State Plate	0	0	0	0	0	0	0	0	0	0	0	0	0	0%	0	0%
Glare on Plate	0	0	0	0	0	0	0	0	0	0	0	0	0	0%	0	0%
Illegible Plate	0	0	0	0	0	0	1	0	0	1	0	0	1	12%	1	5%
Plate Obstructed	0	0	0	0	0	0	0	0	0	0	0	0	0	0%	0	0%
Windshield Glare	0	0	0	0	0	0	0	0	0	1	0	0	1	12%	1	5%
Driver Obstructed	0	0	0	0	0	0	0	0	0	0	0	0	0	0%	1	5%
Car Obstructed	0	0	0	0	0	0	0	3	0	0	0	1	2	24%	14	70%
No DMV Match Found	1	0	0	0	0	0	0	0	3	0	0	0	2	24%	2	10%
LASD Expired	0	0	0	0	0	0	0	0	0	0	0	0	0	0%	0	0%
LASD Return	0	0	0	0	0	0	0	1	0	0	0	0	1	12%	1	6%
Other	0	0	0	0	0	0	0	0	0	0	0	0	0	0%	0	0%
Total:	2	0	2	0	0	0	2	5	3	2	0	1	8	100%	20	100%
Controllable Non-Issued Violations																
Framing of Plate	0	0	0	0	0	0	0	0	0	0	0	0	0	0%	0	0%
Focus / Clarity of Plate	0	0	0	0	0	0	0	0	0	0	0	2	2	43%	0	0%
Dark Interior	0	0	0	1	0	0	0	0	0	0	0	0	1	21%	1	12%
Framing of Driver	0	0	0	0	0	0	0	0	0	0	0	0	0	0%	0	0%
Focus / Clarity of Driver	0	0	0	0	0	0	0	0	0	0	0	0	0	0%	0	0%
Framing of Car	0	0	0	0	0	0	0	0	0	0	0	0	0	0%	0	0%
Data/Operator Error	0	0	0	0	0	0	0	0	0	0	0	0	0	0%	3	40%
Exposure	2	2	0	0	2	0	0	2	1	1	0	0	2	36%	3	36%
Equipment Malfunction	0	0	0	0	0	0	0	0	0	0	0	0	0	0%	1	12%
ACS Expired	0	0	0	0	0	0	0	0	0	0	0	0	0	0%	0	0%
Total:	2	2	0	1	2	0	0	2	1	1	0	2	5	100%	8	100%
Summary Metrics																
Daily Average Vehicle Passes	250	300	277	310	351	384	442	298	385	467	419	333	Year to Date Monthly Average		2012 Monthly Average	
Average Issued Speed	19	18	17	23	0	0	12	17	0	0	26	0	351		291	
Average Issued Red Seconds	60.2	60.5	34.1	67.9	0	0	27.7	72.3	0	0	48.2	0	53.0		54.3	
Citation / Violation Issuance Rate	43%	33%	33%	50%	0%	0%	33%	22%	0%	0%	100%	0%	45%		9%	
Controllable Issuance Rate	60%	33%	100%	50%	0%	0%	100%	50%	0%	0%	100%	0%	70%		42%	



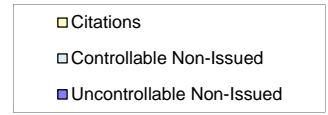
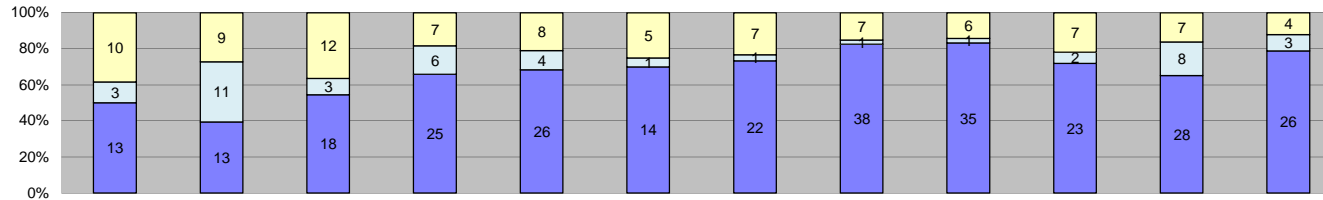
Los Angeles County MTA Expo Line
 Approach Summary Report
 Location 5038: SB to EB Flower @ Adams



Events	Jan-13	Feb-13	Mar-13	Apr-13	May-13	Jun-13	Jul-13	Aug-13	Sep-13	Oct-13	Nov-13	Dec-13	Year to Date Monthly Average		2012 Monthly Average		
	Quantity	Quantity	Quantity	Quantity	Quantity	Quantity	Quantity	Quantity	Quantity	Quantity	Quantity	Quantity	Quantity	%	%	%	
Non-Violations	478	548	542	599	562	336	418	198	711	785	582	824	549	97%	329	98%	
Violations	26	33	17	25	18	14	15	11	9	16	6	34	19	3%	8	2%	
Total:	504	581	559	624	580	350	433	209	720	801	588	858	567	100%	337	100%	
Violations																	
Uncontrollable Non-Issued	20	24	13	21	15	11	11	7	6	16	4	29	15	74%	5	39%	
Controllable Non-Issued	1	2	1	1	0	0	1	2	0	0	2	4	2	9%	5	43%	
Citations	5	7	3	3	3	3	3	2	3	0	0	1	3	17%	2	18%	
Total:	26	33	17	25	18	14	15	11	9	16	6	34	20	83%	12	82%	
Non-Violations																	
Rear Axle Violation	0	1	5	0	0	0	0	0	22	9	13	25	13	2%	14	4%	
Emergency Vehicle	1	2	0	2	3	0	2	0	0	2	0	3	2	0%	1	0%	
Right Turn	0	0	0	0	0	0	0	0	0	0	0	0	0	0%	0	0%	
No Violation Occurred	477	545	537	597	559	336	416	198	689	774	569	796	541	97%	319	95%	
Total:	478	548	542	599	562	336	418	198	711	785	582	824	556	100%	335	100%	
Uncontrollable Non-Issued Violations																	
No Plate	2	0	1	0	2	0	2	0	1	1	1	2	2	7%	2	10%	
Out of State Plate	0	0	0	2	0	0	0	0	1	0	0	1	1	6%	1	8%	
Glare on Plate	1	0	1	0	0	0	0	0	0	0	0	0	1	4%	0	0%	
Illegible Plate	0	0	0	0	0	0	0	0	0	0	0	0	0	0%	0	0%	
Plate Obstructed	0	0	0	0	0	0	0	0	0	0	0	0	0	0%	1	8%	
Windshield Glare	1	5	5	6	8	6	4	1	0	0	1	1	4	17%	1	8%	
Driver Obstructed	7	12	4	8	5	1	4	6	3	2	1	13	6	24%	2	17%	
Car Obstructed	1	1	1	0	0	0	0	0	0	0	0	1	1	4%	2	11%	
No DMV Match Found	2	0	0	0	0	0	0	0	0	1	0	4	2	10%	1	8%	
LASD Expired	0	0	0	0	0	0	0	0	0	0	0	0	0	0%	2	15%	
LASD Return	5	4	1	2	0	4	1	0	0	1	0	7	3	14%	2	14%	
Other	1	2	0	3	0	0	0	0	1	11	1	0	3	14%	2	11%	
Total:	20	24	13	21	15	11	11	7	6	16	4	29	23	100%	13	100%	
Controllable Non-Issued Violations																	
Framing of Plate	0	0	0	0	0	0	0	0	0	0	0	0	0	0%	0	0%	
Focus / Clarity of Plate	0	0	0	0	0	0	0	0	0	0	0	1	1	18%	1	6%	
Dark Interior	0	1	0	1	0	0	1	0	0	0	0	0	1	18%	1	6%	
Framing of Driver	0	0	0	0	0	0	0	0	0	0	0	0	0	0%	2	8%	
Focus / Clarity of Driver	1	1	0	0	0	0	0	0	0	0	0	2	1	24%	0	0%	
Framing of Car	0	0	0	0	0	0	0	0	0	0	0	0	0	0%	2	11%	
Data/Operator Error	0	0	0	0	0	0	0	0	0	0	1	0	1	18%	9	50%	
Exposure	0	0	0	0	0	0	0	0	0	0	0	0	0	0%	0	0%	
Equipment Malfunction	0	0	1	0	0	0	0	2	0	0	1	1	1	22%	4	19%	
ACS Expired	0	0	0	0	0	0	0	0	0	0	0	0	0	0%	0	0%	
Total:	1	2	1	1	0	0	1	2	0	0	2	4	6	100%	18	100%	
Summary Metrics													Year to Date Monthly Average		2012 Monthly Average		
Daily Average Vehicle Passes	261	233	268	259	308	367	451	333	484	433	463	530	366		245		
Average Issued Speed	17	16	16	17	17	17	15	16	18	0	0	48	20		17		
Average Issued Red Seconds	283.7	281.4	134.7	63.9	222.4	188.3	160.9	247.0	200.3	0	0	62.9	184.6		235.6		
Citation / Violation Issuance Rate	19%	21%	18%	12%	17%	21%	20%	18%	33%	0%	0%	3%	18%		31%		
Controllable Issuance Rate	83%	78%	75%	75%	100%	100%	75%	50%	100%	0%	0%	20%	76%		71%		



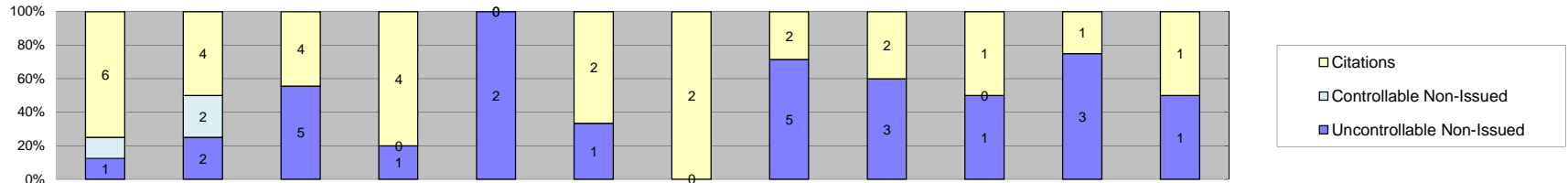
Los Angeles County MTA Expo Line
 Approach Summary Report
 Location 5048: SB to EB Flower at 28th



Events	Jan-13	Feb-13	Mar-13	Apr-13	May-13	Jun-13	Jul-13	Aug-13	Sep-13	Oct-13	Nov-13	Dec-13	Year to Date Monthly Average		2012 Monthly Average	
	Quantity	Quantity	Quantity	Quantity	Quantity	Quantity	Quantity	Quantity	Quantity	Quantity	Quantity	Quantity	Quantity	%	%	%
Non-Violations	21	17	14	19	19	10	15	14	23	17	12	13	16	32%	15	31%
Violations	26	33	33	38	38	20	30	46	42	32	43	33	35	68%	33	69%
Total:	47	50	47	57	57	30	45	60	65	49	55	46	51	100%	48	100%
Violations																
Uncontrollable Non-Issued	13	13	18	25	26	14	22	38	35	23	28	26	23	68%	22	66%
Controllable Non-Issued	3	11	3	6	4	1	1	1	1	2	8	3	4	11%	6	17%
Citations	10	9	12	7	8	5	7	7	6	7	7	4	7	21%	6	17%
Total:	26	33	33	38	38	20	30	46	42	32	43	33	35	79%	33	83%
Non-Violations																
Rear Axle Violation	5	4	3	0	1	0	0	0	4	2	0	0	3	18%	3	19%
Emergency Vehicle	0	3	1	2	0	1	2	1	4	3	1	1	2	11%	3	16%
Right Turn	0	0	0	0	0	0	0	0	0	0	0	0	0	0%	0	0%
No Violation Occurred	16	10	10	17	18	9	13	13	15	12	11	12	13	72%	11	65%
Total:	21	17	14	19	19	10	15	14	23	17	12	13	18	100%	17	100%
Uncontrollable Non-Issued Violations																
No Plate	3	3	1	6	1	1	4	5	4	3	6	3	3	12%	5	17%
Out of State Plate	0	1	1	0	0	0	0	0	0	1	0	0	1	3%	1	5%
Glare on Plate	0	0	0	0	0	0	0	0	0	0	0	0	0	0%	1	4%
Illegible Plate	1	0	0	0	1	0	0	0	1	0	1	0	1	3%	1	4%
Plate Obstructed	0	0	0	0	2	0	0	0	0	0	0	1	2	5%	0	0%
Windshield Glare	0	3	1	1	6	6	7	5	1	1	3	3	3	12%	5	19%
Driver Obstructed	5	3	6	5	4	4	1	20	9	6	9	9	7	24%	6	24%
Car Obstructed	0	0	1	0	0	0	0	0	0	1	0	0	1	3%	2	8%
No DMV Match Found	0	0	0	0	0	0	0	0	1	3	4	1	2	8%	2	7%
LASD Expired	0	0	0	0	0	0	0	0	0	0	0	0	0	0%	2	6%
LASD Return	4	3	8	13	12	3	10	8	19	8	5	9	9	30%	5	22%
Other	0	0	0	0	0	0	0	0	0	0	0	0	0	0%	0	0%
Total:	13	13	18	25	26	14	22	38	35	23	28	26	29	100%	24	100%
Controllable Non-Issued Violations																
Framing of Plate	0	0	0	0	0	0	0	0	0	0	0	0	0	0%	0	0%
Focus / Clarity of Plate	0	0	0	0	0	0	0	0	0	0	0	0	0	0%	0	0%
Dark Interior	3	11	3	6	4	1	1	0	1	2	8	2	4	66%	4	53%
Framing of Driver	0	0	0	0	0	0	0	0	0	0	0	0	0	0%	0	0%
Focus / Clarity of Driver	0	0	0	0	0	0	0	0	0	0	0	1	1	17%	0	0%
Framing of Car	0	0	0	0	0	0	0	0	0	0	0	0	0	0%	1	12%
Data/Operator Error	0	0	0	0	0	0	0	0	0	0	0	0	0	0%	0	0%
Exposure	0	0	0	0	0	0	0	1	0	0	0	0	1	17%	3	35%
Equipment Malfunction	0	0	0	0	0	0	0	0	0	0	0	0	0	0%	0	0%
ACS Expired	0	0	0	0	0	0	0	0	0	0	0	0	0	0%	0	0%
Total:	3	11	3	6	4	1	1	1	1	2	8	3	6	100%	8	100%
Summary Metrics																
Daily Average Vehicle Passes	3,404	2,813	3,075	3,853	4,508	4,717	5,214	5,428	4,597	5,185	4,719	4,298	Year to Date Monthly Average		2012 Monthly Average	
Average Issued Speed	32	29	30	33	32	32	31	28	32	32	31	37	4,318		3,440	
Average Issued Red Seconds	0.7	0.5	0.7	0.4	0.6	0.7	0.4	0.6	0.6	0.5	0.5	0.5	0.5		0.7	
Citation / Violation Issuance Rate	38%	27%	36%	18%	21%	25%	23%	15%	14%	22%	16%	12%	22%		17%	
Controllable Issuance Rate	77%	45%	80%	54%	67%	83%	88%	88%	86%	78%	47%	57%	71%		54%	



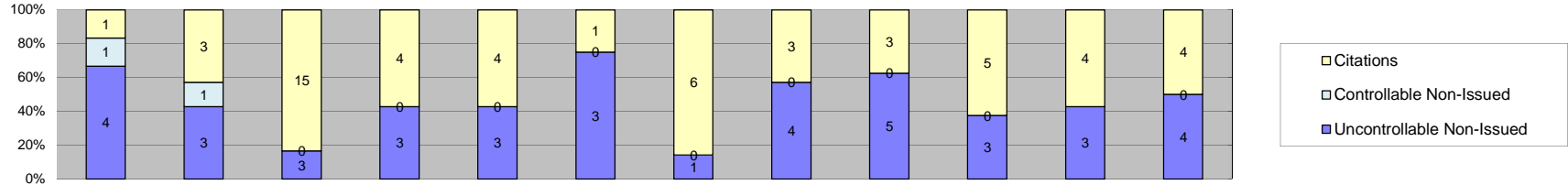
Los Angeles County MTA Expo Line
 Approach Summary Report
 Location 5058: SB to EB Flower @ 30th



Events	Jan-13	Feb-13	Mar-13	Apr-13	May-13	Jun-13	Jul-13	Aug-13	Sep-13	Oct-13	Nov-13	Dec-13	Year to Date Monthly Average		2012 Monthly Average	
													Quantity	%	Quantity	%
Non-Violations	114	96	155	131	115	83	101	90	85	87	98	118	106	96%	130	94%
Violations	8	8	9	5	2	3	2	7	5	2	4	2	5	4%	8	6%
Total:	122	104	164	136	117	86	103	97	90	89	102	120	111	100%	138	100%
Violations																
Uncontrollable Non-Issued	1	2	5	1	2	1	0	5	3	1	3	1	2	35%	4	45%
Controllable Non-Issued	1	2	0	0	0	0	0	0	0	0	0	0	2	23%	2	18%
Citations	6	4	4	4	0	2	2	2	2	1	1	1	3	41%	4	37%
Total:	8	8	9	5	2	3	2	7	5	2	4	2	6	59%	10	63%
Non-Violations																
Rear Axle Violation	0	0	0	0	0	0	0	0	0	0	0	0	0	0%	1	1%
Emergency Vehicle	0	2	1	1	0	1	1	4	3	0	3	1	2	2%	1	1%
Right Turn	0	0	0	0	0	0	0	0	0	0	0	0	0	0%	0	0%
No Violation Occurred	114	94	154	130	115	82	100	86	82	87	95	117	105	98%	130	98%
Total:	114	96	155	131	115	83	101	90	85	87	98	118	107	100%	132	100%
Uncontrollable Non-Issued Violations																
No Plate	0	0	0	0	1	1	0	1	0	0	1	0	1	12%	1	11%
Out of State Plate	0	0	1	0	0	0	0	0	0	0	0	0	1	12%	1	10%
Glare on Plate	0	0	0	0	0	0	0	0	0	0	0	0	0	0%	0	0%
Illegible Plate	0	0	0	0	0	0	0	0	0	0	1	0	1	12%	0	0%
Plate Obstructed	0	0	0	0	0	0	0	0	0	0	0	0	0	0%	1	10%
Windshield Glare	0	0	0	0	0	0	0	1	0	0	0	0	1	12%	1	13%
Driver Obstructed	0	1	1	0	1	0	0	0	0	0	1	0	1	12%	1	10%
Car Obstructed	0	0	0	0	0	0	0	0	0	0	0	0	0	0%	1	13%
No DMV Match Found	0	0	0	0	0	0	0	2	0	0	0	1	2	19%	2	19%
LASD Expired	0	0	0	0	0	0	0	0	0	0	0	0	0	0%	1	10%
LASD Return	1	1	3	1	0	0	0	1	3	1	0	0	2	19%	1	14%
Other	0	0	0	0	0	0	0	0	0	0	0	0	0	0%	0	0%
Total:	1	2	5	1	2	1	0	5	3	1	3	1	8	100%	10	100%
Controllable Non-Issued Violations																
Framing of Plate	0	0	0	0	0	0	0	0	0	0	0	0	0	0%	0	0%
Focus / Clarity of Plate	0	0	0	0	0	0	0	0	0	0	0	0	0	0%	0	0%
Dark Interior	1	2	0	0	0	0	0	0	0	0	0	0	2	100%	1	20%
Framing of Driver	0	0	0	0	0	0	0	0	0	0	0	0	0	0%	0	0%
Focus / Clarity of Driver	0	0	0	0	0	0	0	0	0	0	0	0	0	0%	0	0%
Framing of Car	0	0	0	0	0	0	0	0	0	0	0	0	0	0%	1	20%
Data/Operator Error	0	0	0	0	0	0	0	0	0	0	0	0	0	0%	0	0%
Exposure	0	0	0	0	0	0	0	0	0	0	0	0	0	0%	1	20%
Equipment Malfunction	0	0	0	0	0	0	0	0	0	0	0	0	0	0%	2	40%
ACS Expired	0	0	0	0	0	0	0	0	0	0	0	0	0	0%	0	0%
Total:	1	2	0	0	0	0	0	0	0	0	0	0	2	100%	5	100%
Summary Metrics																
Daily Average Vehicle Passes	179	155	169	194	215	238	271	333	285	300	352	317	Year to Date Monthly Average		2012 Monthly Average	
Average Issued Speed	21	20	19	19	0	18	19	17	18	16	18	22	251		198	
Average Issued Red Seconds	94.7	84.7	65.6	84.7	0	99.9	99.9	99.9	99.9	99.9	99.9	59.2	89.8		85.0	
Citation / Violation Issuance Rate	75%	50%	44%	80%	0%	67%	100%	29%	40%	50%	25%	50%	55%		46%	
Controllable Issuance Rate	86%	67%	100%	100%	0%	100%	100%	100%	100%	100%	100%	100%	96%		90%	



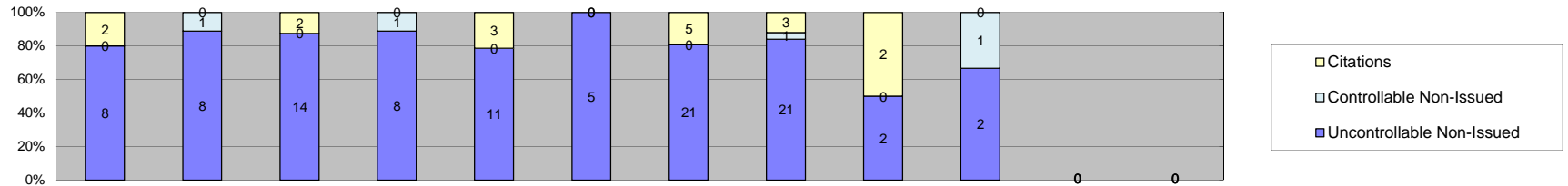
Los Angeles County MTA Expo Line
 Approach Summary Report
 Location 5068: SB to EB Flower @ Jefferson



Events	Jan-13	Feb-13	Mar-13	Apr-13	May-13	Jun-13	Jul-13	Aug-13	Sep-13	Oct-13	Nov-13	Dec-13	Year to Date Monthly Average		2012 Monthly Average	
													Quantity	%	Quantity	%
Non-Violations	82	65	81	93	100	62	70	89	90	100	83	106	85	92%	71	90%
Violations	6	7	18	7	7	4	7	7	8	8	7	8	8	8%	8	10%
Total:	88	72	99	100	107	66	77	96	98	108	90	114	93	100%	79	100%
Violations																
Uncontrollable Non-Issued	4	3	3	3	3	3	1	4	5	3	3	4	3	38%	4	38%
Controllable Non-Issued	1	1	0	0	0	0	0	0	0	0	0	0	1	12%	1	10%
Citations	1	3	15	4	4	1	6	3	3	5	4	4	4	51%	5	52%
Total:	6	7	18	7	7	4	7	7	8	8	7	8	9	49%	10	48%
Non-Violations																
Rear Axle Violation	0	0	0	0	0	0	0	0	0	0	0	0	0	0%	0	0%
Emergency Vehicle	0	0	0	0	0	1	0	1	1	1	0	1	1	1%	1	2%
Right Turn	0	0	0	0	0	0	0	0	0	0	0	0	0	0%	0	0%
No Violation Occurred	82	65	81	93	100	61	70	88	89	99	83	105	85	99%	70	98%
Total:	82	65	81	93	100	62	70	89	90	100	83	106	86	100%	72	100%
Uncontrollable Non-Issued Violations																
No Plate	2	3	1	1	2	1	0	2	2	0	2	2	2	19%	2	12%
Out of State Plate	1	0	0	0	0	1	0	0	0	2	0	0	1	14%	1	9%
Glare on Plate	0	0	0	0	0	0	0	0	0	0	0	0	0	0%	0	0%
Illegible Plate	0	0	0	0	0	0	0	0	0	0	0	0	0	0%	0	0%
Plate Obstructed	0	0	0	0	0	0	0	0	0	0	0	0	0	0%	0	0%
Windshield Glare	1	0	0	0	0	0	0	0	0	0	0	0	1	10%	1	9%
Driver Obstructed	0	0	0	1	0	0	0	0	1	0	0	0	1	10%	1	9%
Car Obstructed	0	0	2	0	0	0	0	0	0	0	0	0	2	21%	2	14%
No DMV Match Found	0	0	0	0	0	0	0	1	2	0	1	0	1	14%	2	18%
LASD Expired	0	0	0	0	0	0	0	0	0	0	0	0	0	0%	2	14%
LASD Return	0	0	0	1	1	1	1	1	0	1	0	2	1	12%	3	27%
Other	0	0	0	0	0	0	0	0	0	0	0	0	0	0%	0	0%
Total:	4	3	3	3	3	3	1	4	5	3	3	4	10	100%	11	100%
Controllable Non-Issued Violations																
Framing of Plate	0	0	0	0	0	0	0	0	0	0	0	0	0	0%	0	0%
Focus / Clarity of Plate	0	0	0	0	0	0	0	0	0	0	0	0	0	0%	0	0%
Dark Interior	0	1	0	0	0	0	0	0	0	0	0	0	1	50%	0	0%
Framing of Driver	0	0	0	0	0	0	0	0	0	0	0	0	0	0%	0	0%
Focus / Clarity of Driver	0	0	0	0	0	0	0	0	0	0	0	0	0	0%	0	0%
Framing of Car	0	0	0	0	0	0	0	0	0	0	0	0	0	0%	0	0%
Data/Operator Error	0	0	0	0	0	0	0	0	0	0	0	0	0	0%	0	0%
Exposure	1	0	0	0	0	0	0	0	0	0	0	0	1	50%	1	50%
Equipment Malfunction	0	0	0	0	0	0	0	0	0	0	0	0	0	0%	1	50%
ACS Expired	0	0	0	0	0	0	0	0	0	0	0	0	0	0%	0	0%
Total:	1	1	0	0	0	0	0	0	0	0	0	0	2	100%	2	100%
Summary Metrics																
Daily Average Vehicle Passes	837	682	869	853	919	955	985	1,085	1,008	1,085	995	900	Year to Date Monthly Average		2012 Monthly Average	
Average Issued Speed	17	22	20	22	19	17	19	18	19	21	18	20	931		1,654	
Average Issued Red Seconds	0.7	24.2	12.1	50.1	40.8	63.0	31.1	60.7	87.7	0.3	25.5	64.6	38.4		39.9	
Citation / Violation Issuance Rate	17%	43%	83%	57%	57%	25%	86%	43%	38%	63%	57%	50%	51%		55%	
Controllable Issuance Rate	50%	75%	100%	100%	100%	100%	100%	100%	100%	100%	100%	100%	94%		89%	



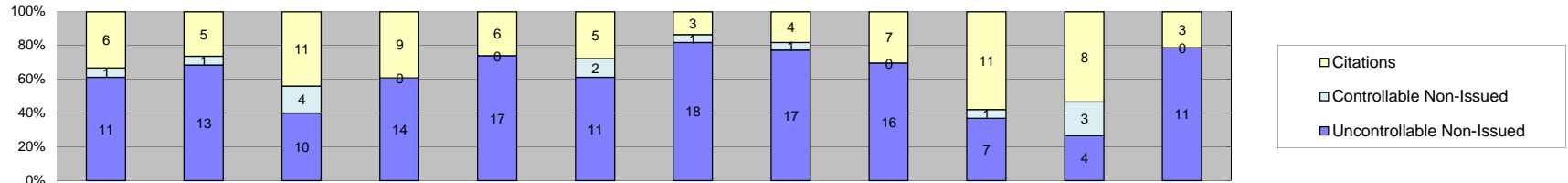
Los Angeles County MTA Expo Line
 Approach Summary Report
 Location 5077: EB to NB Exposition @ Watt



Events	Jan-13	Feb-13	Mar-13	Apr-13	May-13	Jun-13	Jul-13	Aug-13	Sep-13	Oct-13	Nov-13	Dec-13	Year to Date Monthly Average		2012 Monthly Average	
													Quantity	%	Quantity	%
Non-Violations	82	120	130	145	127	56	95	116	110	122	13	0	101	89%	103	88%
Violations	10	9	16	9	14	5	26	25	4	3	0	0	12	11%	14	12%
Total:	92	129	146	154	141	61	121	141	114	125	13	0	114	100%	117	100%
Violations																
Uncontrollable Non-Issued	8	8	14	8	11	5	21	21	2	2	0	0	10	72%	11	70%
Controllable Non-Issued	0	1	0	1	0	0	0	1	0	1	0	0	1	7%	3	17%
Citations	2	0	2	0	3	0	5	3	2	0	0	0	3	20%	2	13%
Total:	10	9	16	9	14	5	26	25	4	3	0	0	14	80%	16	87%
Non-Violations																
Rear Axle Violation	0	0	0	0	0	0	0	0	0	0	0	0	0	0%	1	1%
Emergency Vehicle	0	3	1	1	2	1	1	0	0	0	1	0	1	1%	2	2%
Right Turn	0	0	0	0	0	0	0	0	0	0	0	0	0	0%	0	0%
No Violation Occurred	82	117	129	144	125	55	94	116	110	122	12	0	101	99%	102	97%
Total:	82	120	130	145	127	56	95	116	110	122	13	0	102	100%	105	100%
Uncontrollable Non-Issued Violations																
No Plate	0	1	6	3	2	0	5	3	0	0	0	0	3	18%	2	10%
Out of State Plate	1	0	1	0	1	0	0	1	0	0	0	0	1	6%	1	6%
Glare on Plate	0	1	1	0	1	1	1	0	0	0	0	0	1	6%	2	10%
Illegible Plate	3	2	2	4	3	1	11	11	1	0	0	0	4	23%	5	28%
Plate Obstructed	1	0	0	0	0	0	0	0	0	0	0	0	1	6%	0	0%
Windshield Glare	1	2	2	0	3	1	0	0	1	0	0	0	2	9%	2	13%
Driver Obstructed	1	0	2	0	1	0	0	3	0	1	0	0	2	9%	2	10%
Car Obstructed	0	0	0	1	0	0	0	0	0	0	0	0	1	6%	2	10%
No DMV Match Found	0	0	0	0	0	0	0	1	0	1	0	0	1	6%	1	8%
LASD Expired	0	0	0	0	0	0	0	0	0	0	0	0	0	0%	1	6%
LASD Return	1	2	0	0	0	2	4	2	0	0	0	0	2	12%	1	8%
Other	0	0	0	0	0	0	0	0	0	0	0	0	0	0%	0	0%
Total:	8	8	14	8	11	5	21	21	2	2	0	0	18	100%	16	100%
Controllable Non-Issued Violations																
Framing of Plate	0	0	0	0	0	0	0	0	0	0	0	0	0	0%	0	0%
Focus / Clarity of Plate	0	0	0	0	0	0	0	0	0	0	0	0	0	0%	0	0%
Dark Interior	0	0	0	0	0	0	0	1	0	0	0	0	1	50%	1	18%
Framing of Driver	0	0	0	0	0	0	0	0	0	0	0	0	0	0%	0	0%
Focus / Clarity of Driver	0	0	0	0	0	0	0	0	0	0	0	0	0	0%	0	0%
Framing of Car	0	0	0	0	0	0	0	0	0	0	0	0	0	0%	1	18%
Data/Operator Error	0	0	0	0	0	0	0	0	0	0	0	0	0	0%	0	0%
Exposure	0	1	0	1	0	0	0	0	0	1	0	0	1	50%	2	32%
Equipment Malfunction	0	0	0	0	0	0	0	0	0	0	0	0	0	0%	2	31%
ACS Expired	0	0	0	0	0	0	0	0	0	0	0	0	0	0%	0	0%
Total:	0	1	0	1	0	0	0	1	0	1	0	0	2	100%	5	100%
Summary Metrics																
Daily Average Vehicle Passes	162	155	194	190	219	247	285	328	385	217	185	169	Year to Date Monthly Average		2012 Monthly Average	
Average Issued Speed	17	0	17	0	21	0	18	17	17	0	0	0	228		206	
Average Issued Red Seconds	99.9	0	99.9	0	99.9	0	68.0	73.1	99.9	0	0	0	90.1		82.4	
Citation / Violation Issuance Rate	20%	0%	13%	0%	21%	0%	19%	12%	50%	0%	0%	0%	23%		16%	
Controllable Issuance Rate	100%	0%	100%	0%	100%	0%	100%	75%	100%	0%	0%	0%	96%		70%	



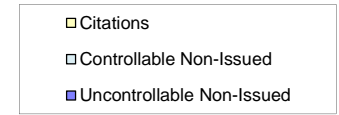
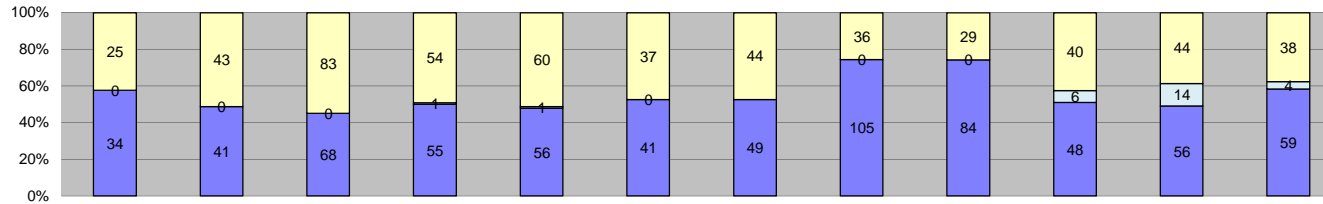
**Los Angeles County MTA Expo Line
Approach Summary Report
Location 5079: WB to SB Exposition @ Bill Robertson**



Events	Jan-13												Year to Date Monthly Average		2012 Monthly Average	
	Jan-13	Feb-13	Mar-13	Apr-13	May-13	Jun-13	Jul-13	Aug-13	Sep-13	Oct-13	Nov-13	Dec-13	Quantity	%	Quantity	%
Non-Violations	99	109	147	112	105	92	89	108	100	110	88	102	105	84%	105	83%
Violations	18	19	25	23	23	18	22	22	23	19	15	14	20	16%	21	17%
Total:	117	128	172	135	128	110	111	130	123	129	103	116	125	100%	126	100%
Violations																
Uncontrollable Non-Issued	11	13	10	14	17	11	18	17	16	7	4	11	12	60%	13	62%
Controllable Non-Issued	1	1	4	0	0	2	1	1	0	1	3	0	2	8%	2	9%
Citations	6	5	11	9	6	5	3	4	7	11	8	3	7	31%	6	29%
Total:	18	19	25	23	23	18	22	22	23	19	15	14	21	69%	22	71%
Non-Violations																
Rear Axle Violation	0	0	0	0	0	0	0	0	0	0	0	0	0	0%	0	0%
Emergency Vehicle	0	0	2	2	0	0	2	1	2	2	2	0	2	2%	2	2%
Right Turn	0	0	0	0	0	0	0	0	0	0	0	0	0	0%	0	0%
No Violation Occurred	99	109	145	110	105	92	87	107	98	108	86	102	104	98%	103	98%
Total:	99	109	147	112	105	92	89	108	100	110	88	102	106	100%	105	100%
Uncontrollable Non-Issued Violations																
No Plate	2	2	1	1	2	2	2	1	3	2	0	3	2	11%	3	12%
Out of State Plate	1	1	0	1	0	0	2	1	0	0	1	1	1	6%	2	7%
Glare on Plate	0	0	0	0	0	0	0	0	0	0	0	0	0	0%	1	5%
Illegible Plate	2	4	1	1	6	1	6	7	3	5	1	2	3	18%	5	22%
Plate Obstructed	4	0	1	3	1	0	1	0	0	0	0	0	2	11%	1	7%
Windshield Glare	1	2	0	1	3	4	3	2	1	0	0	1	2	11%	2	11%
Driver Obstructed	1	0	1	2	0	1	2	1	2	0	0	1	1	8%	1	7%
Car Obstructed	0	0	1	0	0	1	0	0	0	0	0	0	1	6%	1	6%
No DMV Match Found	0	0	0	0	0	0	0	2	1	0	0	1	1	8%	2	10%
LASD Expired	0	0	0	0	0	0	0	0	0	0	0	0	0	0%	2	10%
LASD Return	0	4	5	5	5	2	2	3	6	0	2	2	4	20%	3	16%
Other	0	0	0	0	0	0	0	0	0	0	0	0	0	0%	0	0%
Total:	11	13	10	14	17	11	18	17	16	7	4	11	18	100%	20	100%
Controllable Non-Issued Violations																
Framing of Plate	0	0	0	0	0	0	0	0	0	0	0	0	0	0%	1	14%
Focus / Clarity of Plate	0	0	0	0	0	0	0	0	0	0	0	0	0	0%	1	14%
Dark Interior	1	1	2	0	0	2	1	1	0	1	0	0	1	20%	2	21%
Framing of Driver	0	0	0	0	0	0	0	0	0	0	0	0	0	0%	0	0%
Focus / Clarity of Driver	0	0	0	0	0	0	0	0	0	0	0	0	0	0%	0	0%
Framing of Car	0	0	0	0	0	0	0	0	0	0	0	0	0	0%	0	0%
Data/Operator Error	0	0	0	0	0	0	0	0	0	0	3	0	3	48%	0	0%
Exposure	0	0	2	0	0	0	0	0	0	0	0	0	2	32%	3	36%
Equipment Malfunction	0	0	0	0	0	0	0	0	0	0	0	0	0	0%	1	14%
ACS Expired	0	0	0	0	0	0	0	0	0	0	0	0	0	0%	0	0%
Total:	1	1	4	0	0	2	1	1	0	1	3	0	6	100%	7	100%
Summary Metrics																
Daily Average Vehicle Passes	702	420	522	680	750	817	884	995	852	1,084	995	855	Year to Date Monthly Average		2012 Monthly Average	
Average Issued Speed	17	17	16	18	17	18	16	17	16	18	18	16	17		17	
Average Issued Red Seconds	22.6	20.4	9.0	33.7	24.3	14.9	33.5	12.2	29.0	3.2	5.6	0.4	17.4		15.8	
Citation / Violation Issuance Rate	33%	26%	44%	39%	26%	28%	14%	18%	30%	58%	53%	21%	33%		30%	
Controllable Issuance Rate	86%	83%	73%	100%	100%	71%	75%	80%	100%	92%	73%	100%	86%		79%	



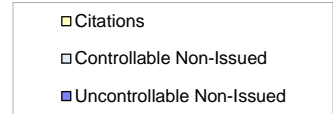
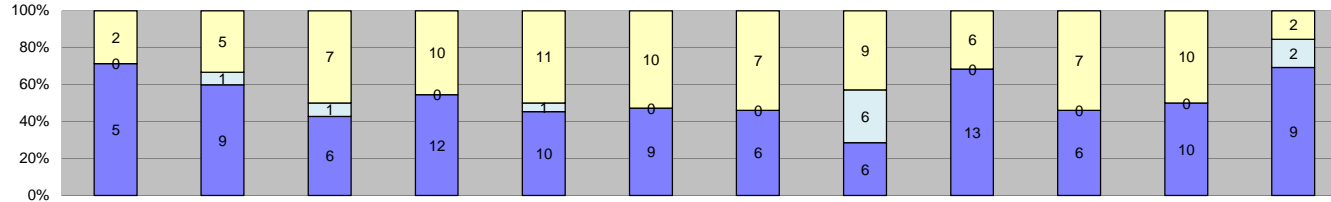
Los Angeles County MTA Expo Line
 Approach Summary Report
 Location 5087: EB to NB Exposition @ Vermont



Events	Jan-13	Feb-13	Mar-13	Apr-13	May-13	Jun-13	Jul-13	Aug-13	Sep-13	Oct-13	Nov-13	Dec-13	Year to Date Monthly Average		2012 Monthly Average	
													Quantity	%	Quantity	%
Non-Violations	196	200	242	221	202	127	198	209	183	136	187	195	191	65%	257	69%
Violations	59	84	151	110	117	78	93	141	113	94	114	101	105	35%	118	31%
Total:	255	284	393	331	319	205	291	350	296	230	301	296	296	100%	375	100%
Violations																
Uncontrollable Non-Issued	34	41	68	55	56	41	49	105	84	48	56	59	58	54%	64	54%
Controllable Non-Issued	0	0	0	1	1	0	0	0	0	6	14	4	5	5%	2	2%
Citations	25	43	83	54	60	37	44	36	29	40	44	38	44	41%	52	44%
Total:	59	84	151	110	117	78	93	141	113	94	114	101	108	59%	119	56%
Non-Violations																
Rear Axle Violation	0	0	0	0	0	0	0	0	0	0	0	0	0	0%	0	0%
Emergency Vehicle	3	5	2	2	1	2	1	4	3	2	0	6	3	1%	4	2%
Right Turn	0	0	0	0	0	0	0	0	0	0	0	0	0	0%	0	0%
No Violation Occurred	193	195	240	219	201	125	197	205	180	134	187	189	189	99%	253	98%
Total:	196	200	242	221	202	127	198	209	183	136	187	195	192	100%	257	100%
Uncontrollable Non-Issued Violations																
No Plate	11	8	11	8	11	5	8	10	8	7	4	7	8	12%	9	13%
Out of State Plate	1	1	5	1	1	3	0	3	4	1	3	1	2	3%	2	3%
Glare on Plate	0	0	0	0	0	0	0	0	0	0	0	0	0	0%	2	4%
Illegible Plate	11	6	11	12	7	5	7	14	7	4	5	2	8	11%	6	10%
Plate Obstructed	0	2	4	0	3	0	2	1	0	1	0	1	2	3%	2	4%
Windshield Glare	4	7	14	20	8	12	14	30	11	8	9	15	13	19%	9	15%
Driver Obstructed	2	0	2	0	1	1	1	2	7	1	1	2	2	3%	1	2%
Car Obstructed	0	0	1	1	3	0	1	0	0	0	0	0	2	2%	3	5%
No DMV Match Found	0	3	0	0	0	0	0	17	13	8	15	16	12	18%	14	22%
LASD Expired	0	0	0	0	0	0	0	1	0	0	0	0	1	1%	5	7%
LASD Return	5	14	20	13	22	15	16	27	34	18	19	15	18	27%	19	29%
Other	0	0	0	0	0	0	0	0	0	0	0	0	0	0%	0	0%
Total:	34	41	68	55	56	41	49	105	84	48	56	59	67	100%	64	100%
Controllable Non-Issued Violations																
Framing of Plate	0	0	0	0	0	0	0	0	0	0	0	0	0	0%	0	0%
Focus / Clarity of Plate	0	0	0	0	0	0	0	0	0	0	0	4	4	17%	2	16%
Dark Interior	0	0	0	1	1	0	0	0	0	1	1	0	1	4%	1	11%
Framing of Driver	0	0	0	0	0	0	0	0	0	0	0	0	0	0%	0	0%
Focus / Clarity of Driver	0	0	0	0	0	0	0	0	0	0	0	0	0	0%	0	0%
Framing of Car	0	0	0	0	0	0	0	0	0	0	0	0	0	0%	1	11%
Data/Operator Error	0	0	0	0	0	0	0	0	0	0	0	0	0	0%	0	0%
Exposure	0	0	0	0	0	0	0	0	0	0	0	0	0	0%	2	18%
Equipment Malfunction	0	0	0	0	0	0	0	0	0	0	13	0	13	57%	4	44%
ACS Expired	0	0	0	0	0	0	0	0	0	5	0	0	5	22%	0	0%
Total:	0	0	0	1	1	0	0	0	0	6	14	4	23	100%	9	100%
Summary Metrics																
Daily Average Vehicle Passes	1,455	1,151	1,425	1,507	1,653	1,747	1,838	1,966	1,822	2,005	1,919	1,671	Year to Date Monthly Average		2012 Monthly Average	
Average Issued Speed	19	21	20	21	20	20	20	21	20	21	19	19	1,680		1,534	
Average Issued Red Seconds	0.5	0.6	0.5	2.4	0.5	0.6	0.5	0.6	0.6	0.6	0.5	0.6	0.7		0.9	
Citation / Violation Issuance Rate	42%	51%	55%	49%	51%	47%	47%	26%	26%	43%	39%	38%	43%		45%	
Controllable Issuance Rate	100%	100%	100%	98%	98%	100%	100%	100%	100%	87%	76%	90%	96%		98%	



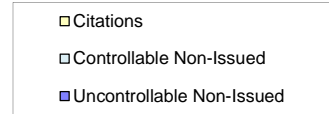
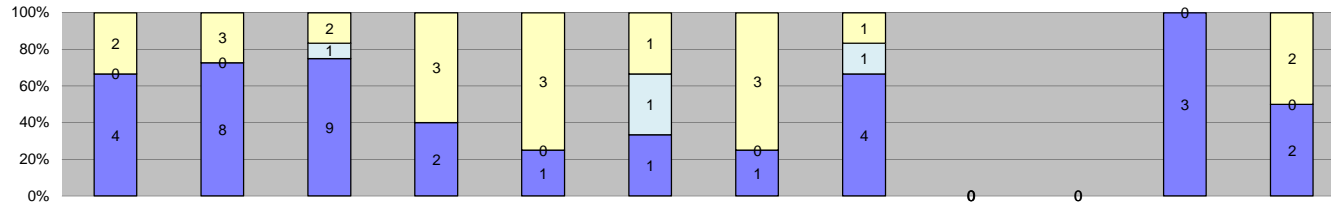
Los Angeles County MTA Expo Line
 Approach Summary Report
 Location 5089: WB to SB Exposition @ Vermont



Events	Jan-13	Feb-13	Mar-13	Apr-13	May-13	Jun-13	Jul-13	Aug-13	Sep-13	Oct-13	Nov-13	Dec-13	Year to Date Monthly Average		2012 Monthly Average	
													Quantity	%	Quantity	%
Non-Violations	141	104	142	128	144	101	119	114	134	178	162	122	132	89%	139	92%
Violations	7	15	14	22	22	19	13	21	19	13	20	13	17	11%	12	8%
Total:	148	119	156	150	166	120	132	135	153	191	182	135	149	100%	151	100%
Violations																
Uncontrollable Non-Issued	5	9	6	12	10	9	6	6	13	6	10	9	8	47%	8	58%
Controllable Non-Issued	0	1	1	0	1	0	0	6	0	0	0	2	2	12%	1	10%
Citations	2	5	7	10	11	10	7	9	6	7	10	2	7	40%	4	31%
Total:	7	15	14	22	22	19	13	21	19	13	20	13	18	60%	14	69%
Non-Violations																
Rear Axle Violation	2	0	0	0	0	0	0	0	0	0	0	0	2	1%	1	1%
Emergency Vehicle	3	2	2	2	3	3	6	3	4	1	2	0	3	2%	4	3%
Right Turn	0	0	0	0	0	0	0	0	0	0	0	0	0	0%	0	0%
No Violation Occurred	136	102	140	126	141	98	113	111	130	177	160	122	130	96%	135	96%
Total:	141	104	142	128	144	101	119	114	134	178	162	122	134	100%	139	100%
Uncontrollable Non-Issued Violations																
No Plate	0	1	2	3	3	1	2	0	1	2	2	1	2	11%	1	7%
Out of State Plate	1	0	0	0	0	0	0	0	0	0	0	0	1	6%	1	5%
Glare on Plate	0	0	0	0	1	1	0	0	2	0	0	0	1	8%	2	8%
Illegible Plate	3	3	3	2	1	2	0	3	3	2	3	3	3	16%	2	13%
Plate Obstructed	0	1	0	0	1	0	0	0	0	0	1	0	1	6%	2	11%
Windshield Glare	0	0	0	3	1	2	1	0	1	0	1	0	2	9%	1	7%
Driver Obstructed	0	0	0	1	0	1	0	0	2	0	1	1	1	7%	1	7%
Car Obstructed	0	1	1	0	0	1	0	0	0	0	0	0	1	6%	2	10%
No DMV Match Found	0	0	0	0	0	0	1	2	2	1	2	4	2	12%	2	11%
LASD Expired	0	0	0	0	1	0	0	0	0	0	0	0	1	6%	4	22%
LASD Return	1	3	0	3	2	1	2	1	2	1	0	0	2	11%	1	5%
Other	0	0	0	0	0	0	0	0	0	0	0	0	0	0%	0	0%
Total:	5	9	6	12	10	9	6	6	13	6	10	9	16	100%	18	100%
Controllable Non-Issued Violations																
Framing of Plate	0	0	0	0	0	0	0	0	0	0	0	0	0	0%	0	0%
Focus / Clarity of Plate	0	0	1	0	0	0	0	0	0	0	0	1	1	25%	1	14%
Dark Interior	0	0	0	0	0	0	0	0	0	0	0	0	0	0%	1	14%
Framing of Driver	0	0	0	0	0	0	0	0	0	0	0	0	0	0%	0	0%
Focus / Clarity of Driver	0	0	0	0	0	0	0	0	0	0	0	0	0	0%	0	0%
Framing of Car	0	0	0	0	0	0	0	0	0	0	0	0	0	0%	1	14%
Data/Operator Error	0	0	0	0	0	0	0	0	0	0	0	0	0	0%	0	0%
Exposure	0	1	0	0	1	0	0	5	0	0	0	1	2	50%	2	29%
Equipment Malfunction	0	0	0	0	0	0	0	0	0	0	0	0	0	0%	2	29%
ACS Expired	0	0	0	0	0	0	0	1	0	0	0	0	1	25%	0	0%
Total:	0	1	1	0	1	0	0	6	0	0	0	2	4	100%	7	100%
Summary Metrics																
Daily Average Vehicle Passes	1,260	954	1,012	1,273	1,384	1,417	1,452	1,632	1,342	1,500	1,734	1,329	Year to Date Monthly Average		2012 Monthly Average	
Average Issued Speed	25	21	21	23	22	22	21	22	19	20	21	20	1,357		1,110	
Average Issued Red Seconds	0.5	0.3	0.7	0.8	18.7	0.5	0.5	10.9	0.4	14.6	0.5	0.7	4.1		9.9	
Citation / Violation Issuance Rate	29%	33%	50%	45%	50%	53%	54%	43%	32%	54%	50%	15%	42%		38%	
Controllable Issuance Rate	100%	83%	88%	100%	92%	100%	100%	60%	100%	100%	100%	50%	89%		88%	



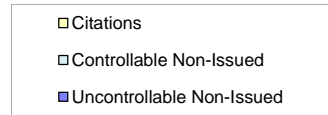
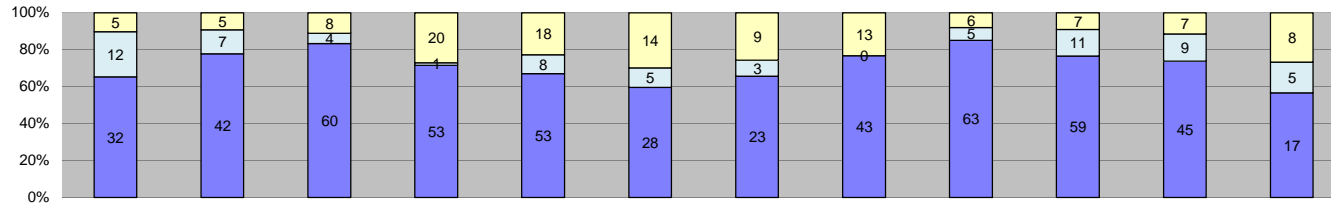
Los Angeles County MTA Expo Line
 Approach Summary Report
 Location 5097: EB to NB Exposition @ Raymond



Events	Jan-13	Feb-13	Mar-13	Apr-13	May-13	Jun-13	Jul-13	Aug-13	Sep-13	Oct-13	Nov-13	Dec-13	Year to Date Monthly Average		2012 Monthly Average	
	Quantity	Quantity	Quantity	Quantity	Quantity	Quantity	Quantity	Quantity	Quantity	Quantity	Quantity	Quantity	Quantity	%	Quantity	%
Non-Violations	667	605	2,493	776	1,884	4,611	850	971	977	1,037	1,068	1,093	1,419	100%	581	99%
Violations	6	11	12	5	4	3	4	6	0	0	3	4	6	0%	7	1%
Total:	673	616	2,505	781	1,888	4,614	854	977	977	1,037	1,071	1,097	1,425	100%	588	100%
Violations																
Uncontrollable Non-Issued	4	8	9	2	1	1	1	4	0	0	3	2	4	52%	4	44%
Controllable Non-Issued	0	0	1	0	0	1	0	1	0	0	0	0	1	15%	3	25%
Citations	2	3	2	3	3	1	3	1	0	0	0	2	2	33%	3	31%
Total:	6	11	12	5	4	3	4	6	0	0	3	4	7	67%	10	69%
Non-Violations																
Rear Axle Violation	0	0	3	0	0	0	0	0	1	4	0	1	2	0%	4	1%
Emergency Vehicle	1	3	1	0	0	0	2	0	0	0	1	1	2	0%	2	0%
Right Turn	0	0	0	0	0	0	0	0	0	0	0	0	0	0%	0	0%
No Violation Occurred	666	602	2,489	776	1,884	4,611	848	971	976	1,033	1,067	1,091	1,418	100%	578	99%
Total:	667	605	2,493	776	1,884	4,611	850	971	977	1,037	1,068	1,093	1,422	100%	584	100%
Uncontrollable Non-Issued Violations																
No Plate	1	0	1	0	0	1	1	0	0	0	1	0	1	10%	2	12%
Out of State Plate	0	0	0	0	0	0	0	0	0	0	0	0	0	0%	1	8%
Glare on Plate	0	0	0	0	0	0	0	0	0	0	0	0	0	0%	1	8%
Illegible Plate	0	0	0	0	0	0	0	0	0	0	0	0	0	0%	0	0%
Plate Obstructed	0	0	0	0	0	0	0	0	0	0	0	0	0	0%	2	15%
Windshield Glare	0	0	2	0	0	0	0	0	0	0	2	1	2	16%	1	8%
Driver Obstructed	1	0	3	0	0	0	0	0	0	0	0	0	2	19%	1	10%
Car Obstructed	0	0	0	0	0	0	0	0	0	0	0	0	0	0%	2	11%
No DMV Match Found	0	0	0	0	0	0	0	0	0	0	0	0	0	0%	2	13%
LASD Expired	0	0	0	0	0	0	0	0	0	0	0	0	0	0%	0	0%
LASD Return	0	0	3	0	1	0	0	0	0	0	0	1	2	16%	2	11%
Other	2	8	0	2	0	0	0	4	0	0	0	0	4	39%	2	15%
Total:	4	8	9	2	1	1	1	4	0	0	3	2	10	100%	13	100%
Controllable Non-Issued Violations																
Framing of Plate	0	0	0	0	0	0	0	0	0	0	0	0	0	0%	0	0%
Focus / Clarity of Plate	0	0	0	0	0	0	0	0	0	0	0	0	0	0%	0	0%
Dark Interior	0	0	0	0	0	0	0	0	0	0	0	0	0	0%	1	20%
Framing of Driver	0	0	0	0	0	0	0	0	0	0	0	0	0	0%	0	0%
Focus / Clarity of Driver	0	0	0	0	0	0	0	0	0	0	0	0	0	0%	0	0%
Framing of Car	0	0	0	0	0	0	0	0	0	0	0	0	0	0%	0	0%
Data/Operator Error	0	0	0	0	0	0	0	1	0	0	0	0	1	33%	1	20%
Exposure	0	0	0	0	0	0	0	0	0	0	0	0	0	0%	0	0%
Equipment Malfunction	0	0	0	0	0	1	0	0	0	0	0	0	1	33%	3	60%
ACS Expired	0	0	1	0	0	0	0	0	0	0	0	0	1	33%	0	0%
Total:	0	0	1	0	0	1	0	1	0	0	0	0	3	100%	5	100%
Summary Metrics																
Daily Average Vehicle Passes	585	529	567	552	619	653	718	895	785	966	1,152	996	Year to Date Monthly Average		2012 Monthly Average	
Average Issued Speed	14	17	15	15	20	24	19	15	0	0	0	20	751		559	
Average Issued Red Seconds	177.9	642.5	192.2	26.4	429.7	0.9	143.4	193.9	0	0	0	65.3	208.0		381.8	
Citation / Violation Issuance Rate	33%	27%	17%	60%	75%	33%	75%	17%	0%	0%	0%	50%	43%		60%	
Controllable Issuance Rate	100%	100%	67%	100%	100%	50%	100%	50%	0%	0%	0%	100%	85%		95%	



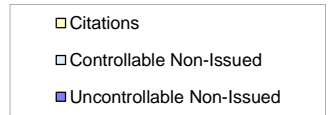
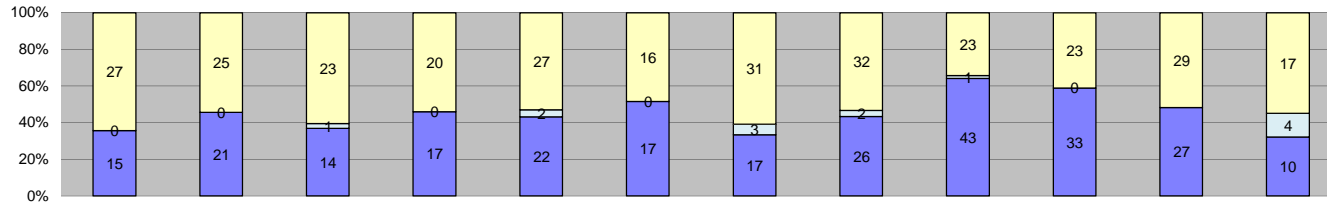
**Los Angeles County MTA Expo Line
Approach Summary Report
Location 5107: EB to NB Exposition @ Normandie**



Events	Jan-13	Feb-13	Mar-13	Apr-13	May-13	Jun-13	Jul-13	Aug-13	Sep-13	Oct-13	Nov-13	Dec-13	Year to Date Monthly Average		2012 Monthly Average	
	Quantity	Quantity	Quantity	Quantity	Quantity	Quantity	Quantity	Quantity	Quantity	Quantity	Quantity	Quantity	Quantity	%	Quantity	%
Events																
Non-Violations	97	126	118	145	145	51	126	128	99	104	142	100	115	66%	139	74%
Violations	49	54	72	74	79	47	35	56	74	77	61	30	59	34%	48	26%
Total:	146	180	190	219	224	98	161	184	173	181	203	130	174	100%	187	100%
Violations																
Uncontrollable Non-Issued	32	42	60	53	53	28	23	43	63	59	45	17	43	73%	40	80%
Controllable Non-Issued	12	7	4	1	8	5	3	0	5	11	9	5	6	11%	5	10%
Citations	5	5	8	20	18	14	9	13	6	7	7	8	10	17%	5	10%
Total:	49	54	72	74	79	47	35	56	74	77	61	30	60	83%	50	90%
Non-Violations																
Rear Axle Violation	0	0	0	0	1	0	0	0	0	0	0	0	1	1%	0	0%
Emergency Vehicle	0	5	0	3	2	0	3	0	3	5	4	0	4	3%	4	3%
Right Turn	0	0	0	0	0	0	0	0	0	0	0	0	0	0%	0	0%
No Violation Occurred	97	121	118	142	142	51	123	128	96	99	138	100	113	96%	136	97%
Total:	97	126	118	145	145	51	126	128	99	104	142	100	117	100%	139	100%
Uncontrollable Non-Issued Violations																
No Plate	3	5	3	3	5	3	0	5	7	7	4	2	4	8%	4	8%
Out of State Plate	0	0	0	0	2	1	1	0	0	0	0	0	1	3%	1	3%
Glare on Plate	0	0	0	0	0	0	0	0	0	0	0	0	0	0%	1	3%
Illegible Plate	3	4	3	4	6	0	2	3	8	5	3	3	4	8%	4	8%
Plate Obstructed	0	0	4	0	3	0	1	0	0	0	1	0	2	4%	2	5%
Windshield Glare	14	16	19	29	20	15	9	12	22	26	19	3	17	33%	9	20%
Driver Obstructed	0	0	2	1	1	0	0	0	0	1	3	0	2	3%	2	4%
Car Obstructed	0	0	2	0	0	0	0	0	0	0	0	0	2	4%	1	3%
No DMV Match Found	0	0	1	0	0	0	0	8	5	7	4	3	5	9%	5	12%
LASD Expired	0	0	0	0	0	0	0	0	0	0	0	0	0	0%	0	0%
LASD Return	12	17	26	16	16	9	10	15	21	13	11	6	14	28%	17	41%
Other	0	0	0	0	0	0	0	0	0	0	0	0	0	0%	0	0%
Total:	32	42	60	53	53	28	23	43	63	59	45	17	51	100%	42	100%
Controllable Non-Issued Violations																
Framing of Plate	0	0	0	0	0	0	0	0	0	0	0	0	0	0%	1	8%
Focus / Clarity of Plate	0	0	0	0	0	0	0	0	0	0	0	2	2	14%	3	24%
Dark Interior	9	4	2	1	6	0	3	0	0	3	0	0	4	29%	2	18%
Framing of Driver	0	0	0	0	0	0	0	0	0	0	0	1	1	7%	0	0%
Focus / Clarity of Driver	0	0	0	0	0	0	0	0	0	1	0	0	1	7%	0	0%
Framing of Car	0	0	0	0	0	0	0	0	0	0	0	0	0	0%	0	0%
Data/Operator Error	0	0	0	0	1	1	0	0	0	0	0	0	1	7%	0	0%
Exposure	0	0	0	0	0	0	0	0	0	1	0	0	1	7%	2	19%
Equipment Malfunction	3	3	2	0	1	4	0	0	5	6	9	2	4	28%	4	30%
ACS Expired	0	0	0	0	0	0	0	0	0	0	0	0	0	0%	0	0%
Total:	12	7	4	1	8	5	3	0	5	11	9	5	14	100%	12	100%
Summary Metrics																
Daily Average Vehicle Passes	1,009	829	897	1,111	1,212	1,260	1,301	1,419	1,152	1,263	1,619	1,338	Year to Date Monthly Average		2012 Monthly Average	
Average Issued Speed	22	21	22	21	21	21	22	21	22	20	20	21	1,201		916	
Average Issued Red Seconds	0.3	0.8	0.6	0.6	0.6	6.9	0.5	0.7	0.5	0.5	0.5	0.5	1.1		9.0	
Citation / Violation Issuance Rate	10%	9%	11%	27%	23%	30%	26%	23%	8%	9%	11%	27%	18%		12%	
Controllable Issuance Rate	29%	42%	67%	95%	69%	74%	75%	100%	55%	39%	44%	62%	62%		62%	



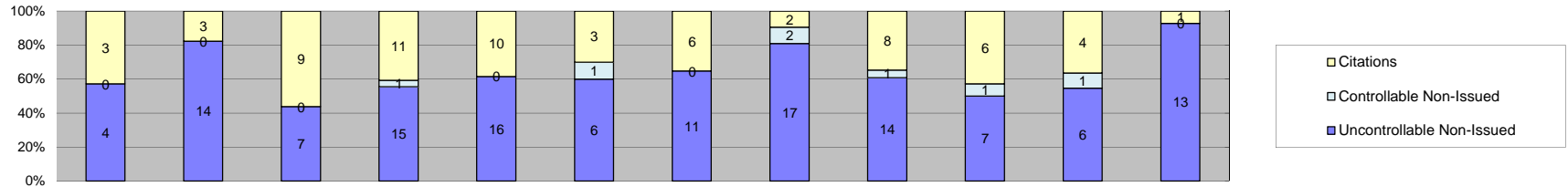
Los Angeles County MTA Expo Line
 Approach Summary Report
 Location 5109: WB to SB Exposition @ Normandie



Events	Jan-13	Feb-13	Mar-13	Apr-13	May-13	Jun-13	Jul-13	Aug-13	Sep-13	Oct-13	Nov-13	Dec-13	Year to Date Monthly Average		2012 Monthly Average	
													Quantity	%	Quantity	%
Non-Violations	197	188	220	240	200	115	203	238	209	267	235	222	211	82%	220	83%
Violations	42	46	38	37	51	33	51	60	67	56	56	31	47	18%	44	17%
Total:	239	234	258	277	251	148	254	298	276	323	291	253	259	100%	264	100%
Violations																
Uncontrollable Non-Issued	15	21	14	17	22	17	17	26	43	33	27	10	22	45%	23	51%
Controllable Non-Issued	0	0	1	0	2	0	3	2	1	0	0	4	2	4%	3	6%
Citations	27	25	23	20	27	16	31	32	23	23	29	17	24	50%	19	43%
Total:	42	46	38	37	51	33	51	60	67	56	56	31	48	50%	45	57%
Non-Violations																
Rear Axle Violation	1	0	0	0	0	0	0	0	0	0	0	0	1	0%	0	0%
Emergency Vehicle	2	2	2	1	2	1	2	6	6	5	5	1	3	1%	5	2%
Right Turn	0	0	0	0	0	0	0	0	0	0	0	0	0	0%	0	0%
No Violation Occurred	194	186	218	239	198	114	201	232	203	262	230	221	208	98%	215	98%
Total:	197	188	220	240	200	115	203	238	209	267	235	222	212	100%	220	100%
Uncontrollable Non-Issued Violations																
No Plate	6	4	4	5	2	3	4	4	12	4	7	5	5	17%	5	15%
Out of State Plate	0	3	0	1	0	0	0	1	2	2	1	0	2	6%	2	6%
Glare on Plate	0	0	0	0	0	2	0	0	1	0	1	0	1	5%	3	11%
Illegible Plate	4	3	5	4	3	6	5	12	6	12	5	1	6	19%	4	15%
Plate Obstructed	0	0	0	0	0	0	0	1	1	0	0	0	1	3%	2	7%
Windshield Glare	2	2	0	3	1	3	2	0	0	0	3	0	2	8%	2	7%
Driver Obstructed	1	0	0	0	5	1	0	2	4	1	2	0	2	8%	2	8%
Car Obstructed	0	1	0	0	1	0	1	0	0	0	0	1	1	3%	2	8%
No DMV Match Found	1	2	0	0	0	0	0	3	7	6	5	3	4	13%	4	14%
LASD Expired	0	0	0	0	0	0	0	0	0	0	0	0	0	0%	2	9%
LASD Return	1	6	5	4	10	2	5	3	10	8	3	0	5	18%	4	16%
Other	0	0	0	0	0	0	0	0	0	0	0	0	0	0%	0	0%
Total:	15	21	14	17	22	17	17	26	43	33	27	10	29	100%	27	100%
Controllable Non-Issued Violations																
Framing of Plate	0	0	0	0	0	0	0	0	1	0	0	0	1	11%	0	0%
Focus / Clarity of Plate	0	0	0	0	0	0	1	0	0	0	0	3	2	22%	1	11%
Dark Interior	0	0	0	0	0	0	0	0	0	0	0	1	1	11%	1	11%
Framing of Driver	0	0	0	0	0	0	0	0	0	0	0	0	0	0%	0	0%
Focus / Clarity of Driver	0	0	0	0	0	0	0	0	0	0	0	0	0	0%	0	0%
Framing of Car	0	0	0	0	0	0	0	0	0	0	0	0	0	0%	1	11%
Data/Operator Error	0	0	0	0	0	0	0	0	0	0	0	0	0	0%	0	0%
Exposure	0	0	0	0	0	0	2	2	0	0	0	0	2	22%	1	14%
Equipment Malfunction	0	0	0	0	2	0	0	0	0	0	0	0	2	22%	5	54%
ACS Expired	0	0	1	0	0	0	0	0	0	0	0	0	1	11%	0	0%
Total:	0	0	1	0	2	0	3	2	1	0	0	4	9	100%	9	100%
Summary Metrics																
Daily Average Vehicle Passes	788	613	662	789	855	907	995	1,085	930	1,148	1,298	1,085	Year to Date Monthly Average		2012 Monthly Average	
Average Issued Speed	21	23	23	22	24	24	24	22	23	23	22	23	930		761	
Average Issued Red Seconds	4.2	0.4	0.5	10.5	4.3	0.6	1.5	3.7	0.7	4.9	3.1	12.2	3.9		4.6	
Citation / Violation Issuance Rate	64%	54%	61%	54%	53%	48%	61%	53%	34%	41%	52%	55%	53%		43%	
Controllable Issuance Rate	100%	100%	96%	100%	93%	100%	91%	94%	96%	100%	100%	81%	96%		93%	



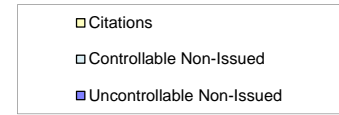
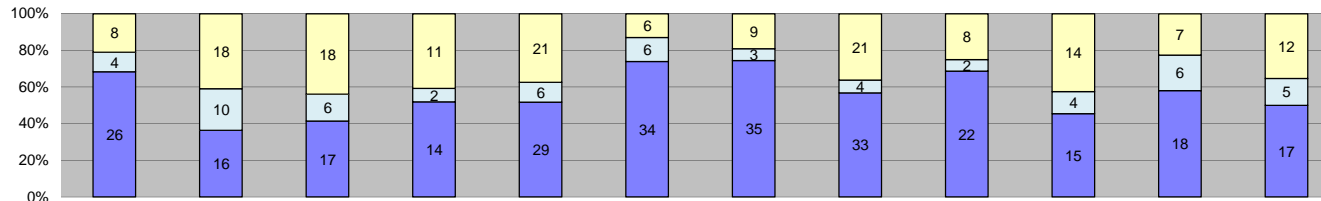
Los Angeles County MTA Expo Line
 Approach Summary Report
 Location 5117: EB to NB Exposition @ Halldale



Events	Jan-13	Feb-13	Mar-13	Apr-13	May-13	Jun-13	Jul-13	Aug-13	Sep-13	Oct-13	Nov-13	Dec-13	Year to Date Monthly Average		2012 Monthly Average	
	Quantity	Quantity	Quantity	Quantity	Quantity	Quantity	Quantity	Quantity	Quantity	Quantity	Quantity	Quantity	Quantity	%	Quantity	%
Non-Violations	83	65	87	93	84	52	106	78	103	99	81	74	84	83%	99	79%
Violations	7	17	16	27	26	10	17	21	23	14	11	14	17	17%	26	21%
Total:	90	82	103	120	110	62	123	99	126	113	92	88	101	100%	125	100%
Violations																
Uncontrollable Non-Issued	4	14	7	15	16	6	11	17	14	7	6	13	11	62%	19	72%
Controllable Non-Issued	0	0	0	1	0	1	0	2	1	1	1	0	1	7%	2	6%
Citations	3	3	9	11	10	3	6	2	8	6	4	1	6	31%	6	22%
Total:	7	17	16	27	26	10	17	21	23	14	11	14	18	69%	27	78%
Non-Violations																
Rear Axle Violation	0	0	0	0	0	0	0	0	0	0	0	0	0	0%	1	1%
Emergency Vehicle	0	1	2	2	3	3	3	1	1	1	1	1	2	2%	6	6%
Right Turn	0	0	0	0	0	0	0	0	0	0	0	0	0	0%	0	0%
No Violation Occurred	83	64	85	91	81	49	103	77	102	98	80	73	82	98%	94	93%
Total:	83	65	87	93	84	52	106	78	103	99	81	74	84	100%	100	100%
Uncontrollable Non-Issued Violations																
No Plate	2	4	1	1	2	0	0	1	2	0	2	3	2	13%	4	14%
Out of State Plate	0	0	0	0	1	0	0	0	1	0	0	0	1	6%	0	0%
Glare on Plate	0	0	0	0	0	0	0	0	0	0	0	0	0	0%	3	14%
Illegible Plate	0	3	2	8	3	3	7	9	2	2	2	4	4	26%	8	37%
Plate Obstructed	1	1	1	2	2	0	1	0	0	0	0	0	1	9%	1	5%
Windshield Glare	1	2	0	2	4	3	1	4	4	1	1	2	2	15%	1	6%
Driver Obstructed	0	1	1	1	0	0	0	1	1	2	0	1	1	7%	2	10%
Car Obstructed	0	0	0	0	0	0	0	0	0	0	0	0	0	0%	1	5%
No DMV Match Found	0	0	0	0	0	0	0	0	1	2	1	0	1	9%	2	9%
LASD Expired	0	0	0	0	0	0	0	0	0	0	0	0	0	0%	1	5%
LASD Return	0	3	2	1	4	0	2	2	3	0	0	3	3	16%	2	9%
Other	0	0	0	0	0	0	0	0	0	0	0	0	0	0%	0	0%
Total:	4	14	7	15	16	6	11	17	14	7	6	13	16	100%	22	100%
Controllable Non-Issued Violations																
Framing of Plate	0	0	0	0	0	0	0	0	0	0	0	0	0	0%	1	22%
Focus / Clarity of Plate	0	0	0	0	0	0	0	0	0	0	0	0	0	0%	0	0%
Dark Interior	0	0	0	1	0	1	0	2	1	1	0	0	1	55%	1	22%
Framing of Driver	0	0	0	0	0	0	0	0	0	0	0	0	0	0%	0	0%
Focus / Clarity of Driver	0	0	0	0	0	0	0	0	0	0	0	0	0	0%	0	0%
Framing of Car	0	0	0	0	0	0	0	0	0	0	0	0	0	0%	0	0%
Data/Operator Error	0	0	0	0	0	0	0	0	0	0	0	0	0	0%	0	0%
Exposure	0	0	0	0	0	0	0	0	0	0	1	0	1	45%	2	33%
Equipment Malfunction	0	0	0	0	0	0	0	0	0	0	0	0	0	0%	1	22%
ACS Expired	0	0	0	0	0	0	0	0	0	0	0	0	0	0%	0	0%
Total:	0	0	0	1	0	1	0	2	1	1	1	0	2	100%	5	100%
Summary Metrics																
Daily Average Vehicle Passes	238	223	275	318	418	485	553	718	585	652	885	817	Year to Date Monthly Average		2012 Monthly Average	
Average Issued Speed	18	20	19	21	18	20	18	17	18	21	20	18	514		268	
Average Issued Red Seconds	66.8	58.8	66.1	38.0	34.9	61.3	99.5	66.0	50.3	26.2	31.8	0.2	50.0		56.4	
Citation / Violation Issuance Rate	43%	18%	56%	41%	38%	30%	35%	10%	35%	43%	36%	7%	33%		22%	
Controllable Issuance Rate	100%	100%	100%	92%	100%	75%	100%	50%	89%	86%	80%	100%	89%		88%	



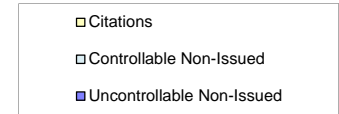
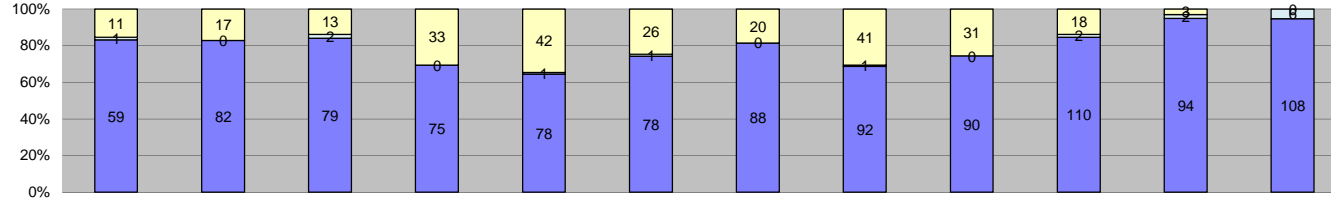
Los Angeles County MTA Expo Line
 Approach Summary Report
 Location 5119: WB to SB Exposition @ Denker



Events	Jan-13	Feb-13	Mar-13	Apr-13	May-13	Jun-13	Jul-13	Aug-13	Sep-13	Oct-13	Nov-13	Dec-13	Year to Date Monthly Average		2012 Monthly Average	
													Quantity	%	Quantity	%
Non-Violations	176	211	193	100	155	131	191	141	106	134	78	77	141	78%	197	85%
Violations	38	44	41	27	56	46	47	58	32	33	31	34	41	22%	36	15%
Total:	214	255	234	127	211	177	238	199	138	167	109	111	182	100%	233	100%
Violations																
Uncontrollable Non-Issued	26	16	17	14	29	34	35	33	22	15	18	17	23	57%	23	64%
Controllable Non-Issued	4	10	6	2	6	6	3	4	2	4	6	5	5	12%	3	9%
Citations	8	18	18	11	21	6	9	21	8	14	7	12	13	31%	10	27%
Total:	38	44	41	27	56	46	47	58	32	33	31	34	41	69%	36	73%
Non-Violations																
Rear Axle Violation	0	0	0	0	0	0	0	0	0	0	0	0	0	0%	1	1%
Emergency Vehicle	4	10	5	1	8	6	7	3	3	8	3	2	5	4%	8	4%
Right Turn	0	0	0	0	0	0	0	0	0	0	0	0	0	0%	0	0%
No Violation Occurred	172	201	188	99	147	125	184	138	103	126	75	75	136	96%	189	95%
Total:	176	211	193	100	155	131	191	141	106	134	78	77	141	100%	198	100%
Uncontrollable Non-Issued Violations																
No Plate	6	3	7	0	3	5	1	8	3	2	5	4	4	15%	4	13%
Out of State Plate	0	0	0	0	0	0	1	0	0	0	0	0	1	4%	2	7%
Glare on Plate	0	0	0	0	0	0	0	0	0	0	0	0	0	0%	2	7%
Illegible Plate	9	3	5	3	7	7	13	11	1	3	2	3	6	20%	4	15%
Plate Obstructed	0	1	0	0	1	2	0	0	0	0	1	1	1	4%	1	5%
Windshield Glare	4	2	1	4	3	3	3	2	4	1	3	0	3	10%	2	6%
Driver Obstructed	2	0	1	0	0	0	2	0	1	1	0	0	1	5%	2	8%
Car Obstructed	0	0	0	0	1	0	0	0	0	0	0	0	1	4%	2	8%
No DMV Match Found	0	0	0	0	0	0	0	3	1	6	1	2	3	9%	3	11%
LASD Expired	0	0	0	0	0	0	0	0	0	0	0	0	0	0%	3	10%
LASD Return	5	7	3	7	14	17	15	9	12	2	6	7	9	30%	7	24%
Other	0	0	0	0	0	0	0	0	0	0	0	0	0	0%	0	0%
Total:	26	16	17	14	29	34	35	33	22	15	18	17	28	100%	29	100%
Controllable Non-Issued Violations																
Framing of Plate	0	0	0	0	0	0	0	0	0	0	0	0	0	0%	1	12%
Focus / Clarity of Plate	0	0	0	0	0	0	0	0	0	0	0	2	2	21%	0	0%
Dark Interior	4	9	6	2	3	6	3	3	2	4	6	3	4	44%	3	31%
Framing of Driver	0	0	0	0	0	0	0	0	0	0	0	0	0	0%	0	0%
Focus / Clarity of Driver	0	0	0	0	0	0	0	0	0	0	0	0	0	0%	3	35%
Framing of Car	0	0	0	0	1	0	0	0	0	0	0	0	1	10%	1	12%
Data/Operator Error	0	0	0	0	0	0	0	0	0	0	0	0	0	0%	0	0%
Exposure	0	0	0	0	2	0	0	1	0	0	0	0	2	15%	0	0%
Equipment Malfunction	0	1	0	0	0	0	0	0	0	0	0	0	1	10%	1	12%
ACS Expired	0	0	0	0	0	0	0	0	0	0	0	0	0	0%	0	0%
Total:	4	10	6	2	6	6	3	4	2	4	6	5	10	100%	9	100%
Summary Metrics																
Daily Average Vehicle Passes	665	538	543	432	595	651	685	819	995	855	1,085	930	Year to Date Monthly Average		2012 Monthly Average	
Average Issued Speed	18	19	19	19	19	18	19	19	19	18	19	18	733		492	
Average Issued Red Seconds	37.8	9.0	9.7	18.5	5.4	17.3	9.3	0.9	0.8	7.7	0.6	17.3	11.2		23.9	
Citation / Violation Issuance Rate	21%	41%	44%	41%	38%	13%	19%	36%	25%	42%	23%	35%	31%		27%	
Controllable Issuance Rate	67%	64%	75%	85%	78%	50%	75%	84%	80%	78%	54%	71%	72%		76%	



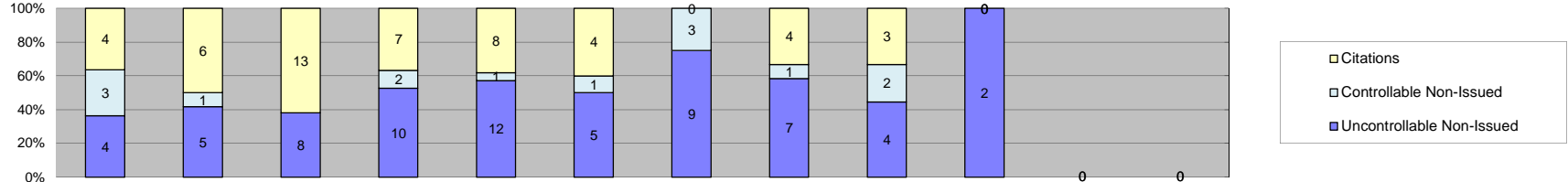
Los Angeles County MTA Expo Line
 Approach Summary Report
 Location 5127: EB to NB Exposition @ Western



Events	Jan-13	Feb-13	Mar-13	Apr-13	May-13	Jun-13	Jul-13	Aug-13	Sep-13	Oct-13	Nov-13	Dec-13	Year to Date Monthly Average		2012 Monthly Average	
													Quantity	%	Quantity	%
Non-Violations	88	89	89	97	102	64	105	85	101	92	89	87	91	45%	97	53%
Violations	71	99	94	108	121	105	108	134	121	130	99	114	109	55%	86	47%
Total:	159	188	183	205	223	169	213	219	222	222	188	201	199	100%	183	100%
Violations																
Uncontrollable Non-Issued	59	82	79	75	78	78	88	92	90	110	94	108	86	77%	77	89%
Controllable Non-Issued	1	0	2	0	1	1	0	1	0	2	2	6	2	2%	5	6%
Citations	11	17	13	33	42	26	20	41	31	18	3	0	23	21%	5	6%
Total:	71	99	94	108	121	105	108	134	121	130	99	114	111	79%	87	94%
Non-Violations																
Rear Axle Violation	1	0	0	0	0	0	0	0	0	0	0	0	1	1%	1	1%
Emergency Vehicle	3	4	4	4	3	3	7	2	4	3	3	1	3	4%	5	5%
Right Turn	0	0	0	0	0	0	0	0	0	0	0	0	0	0%	0	0%
No Violation Occurred	84	85	85	93	99	61	98	83	97	89	86	86	87	95%	93	94%
Total:	88	89	89	97	102	64	105	85	101	92	89	87	92	100%	99	100%
Uncontrollable Non-Issued Violations																
No Plate	3	9	8	9	10	11	6	12	7	8	9	9	8	9%	7	9%
Out of State Plate	0	0	0	1	0	1	1	1	1	0	1	0	1	1%	2	3%
Glare on Plate	0	0	0	0	0	0	0	0	0	0	0	0	0	0%	1	1%
Illegible Plate	3	6	2	2	6	4	8	4	2	9	3	3	4	5%	5	6%
Plate Obstructed	0	0	1	1	1	0	1	0	0	1	0	1	1	1%	2	2%
Windshield Glare	4	3	3	6	7	6	7	8	7	7	4	7	6	6%	10	12%
Driver Obstructed	0	3	1	6	2	2	4	4	3	4	3	1	3	3%	2	2%
Car Obstructed	1	2	0	1	0	1	0	0	0	1	1	1	1	1%	2	2%
No DMV Match Found	0	2	1	1	0	0	0	14	13	12	5	13	8	8%	6	8%
LASD Expired	0	0	0	0	0	0	0	0	0	0	0	0	0	0%	1	1%
LASD Return	48	57	63	48	52	53	61	49	57	68	68	73	58	64%	47	61%
Other	0	0	0	0	0	0	0	0	0	0	0	0	0	0%	0	0%
Total:	59	82	79	75	78	78	88	92	90	110	94	108	90	100%	77	100%
Controllable Non-Issued Violations																
Framing of Plate	0	0	0	0	0	0	0	0	0	0	0	0	0	0%	0	0%
Focus / Clarity of Plate	0	0	0	0	0	0	0	0	0	0	0	4	4	42%	0	0%
Dark Interior	0	0	1	0	0	1	0	0	0	0	1	1	1	11%	4	26%
Framing of Driver	0	0	0	0	0	0	0	0	0	2	1	0	2	16%	2	11%
Focus / Clarity of Driver	0	0	0	0	0	0	0	0	0	0	0	0	0	0%	0	0%
Framing of Car	1	0	0	0	1	0	0	0	0	0	0	0	1	11%	1	7%
Data/Operator Error	0	0	0	0	0	0	0	0	0	0	0	1	1	11%	0	0%
Exposure	0	0	1	0	0	0	0	1	0	0	0	0	1	11%	4	26%
Equipment Malfunction	0	0	0	0	0	0	0	0	0	0	0	0	0	0%	2	15%
ACS Expired	0	0	0	0	0	0	0	0	0	0	0	0	0	0%	2	15%
Total:	1	0	2	0	1	1	0	1	0	2	2	6	10	100%	14	100%
Summary Metrics																
Daily Average Vehicle Passes	1,284	1,033	1,112	1,335	1,485	1,595	1,665	1,745	1,597	1,667	1,966	1,755	Year to Date Monthly Average		2012 Monthly Average	
Average Issued Speed	20	20	21	21	21	21	22	21	20	20	21	0	1,520		1,009	
Average Issued Red Seconds	0.5	4.0	0.7	0.5	4.3	0.7	0.6	0.7	0.5	0.6	0.5	0	1.2		11.2	
Citation / Violation Issuance Rate	15%	17%	14%	31%	35%	25%	19%	31%	26%	14%	3%	0%	21%		5%	
Controllable Issuance Rate	92%	100%	87%	100%	98%	96%	100%	98%	100%	90%	60%	0%	93%		56%	



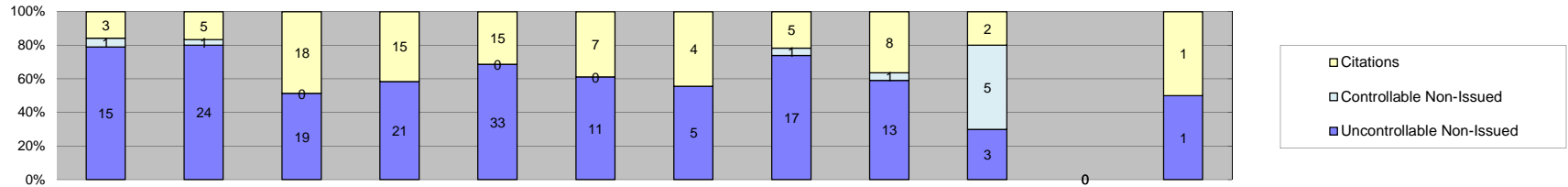
Los Angeles County MTA Expo Line
 Approach Summary Report
 Location 5129: WB to SB Exposition @ Western



Events	Jan-13	Feb-13	Mar-13	Apr-13	May-13	Jun-13	Jul-13	Aug-13	Sep-13	Oct-13	Nov-13	Dec-13	Year to Date Monthly Average		2012 Monthly Average	
													Quantity	%	Quantity	%
Non-Violations	160	151	160	144	151	105	110	98	62	10	2	0	105	89%	165	92%
Violations	11	12	21	19	21	10	12	12	9	2	0	0	13	11%	14	8%
Total:	171	163	181	163	172	115	122	110	71	12	2	0	118	100%	179	100%
Violations																
Uncontrollable Non-Issued	4	5	8	10	12	5	9	7	4	2	0	0	7	46%	9	61%
Controllable Non-Issued	3	1	0	2	1	1	3	1	2	0	0	0	2	12%	3	17%
Citations	4	6	13	7	8	4	0	4	3	0	0	0	6	42%	3	22%
Total:	11	12	21	19	21	10	12	12	9	2	0	0	14	58%	15	78%
Non-Violations																
Rear Axle Violation	0	0	0	0	0	0	0	0	0	0	0	0	0	0%	0	0%
Emergency Vehicle	3	1	3	0	1	0	1	1	1	0	0	0	2	1%	2	1%
Right Turn	0	0	0	0	0	0	0	0	0	0	0	0	0	0%	0	0%
No Violation Occurred	157	150	157	144	150	105	109	97	61	10	2	0	104	99%	163	99%
Total:	160	151	160	144	151	105	110	98	62	10	2	0	105	100%	165	100%
Uncontrollable Non-Issued Violations																
No Plate	0	0	3	2	3	0	3	1	4	1	0	0	2	17%	2	8%
Out of State Plate	0	1	0	0	0	0	0	2	0	0	0	0	2	11%	1	5%
Glare on Plate	0	0	0	0	0	0	0	0	0	0	0	0	0	0%	3	16%
Illegible Plate	1	0	0	2	0	1	0	1	0	0	0	0	1	9%	2	13%
Plate Obstructed	0	0	0	0	0	0	0	0	0	0	0	0	0	0%	1	7%
Windshield Glare	0	2	1	0	1	1	3	1	0	0	0	0	2	11%	1	6%
Driver Obstructed	0	0	0	4	0	0	0	0	0	1	0	0	3	18%	2	9%
Car Obstructed	1	1	1	0	0	0	0	0	0	0	0	0	1	7%	3	18%
No DMV Match Found	1	0	1	0	0	0	0	0	0	0	0	0	1	7%	2	8%
LASD Expired	0	0	0	0	0	0	0	0	0	0	0	0	0	0%	1	6%
LASD Return	1	1	2	2	8	3	3	2	0	0	0	0	3	20%	2	10%
Other	0	0	0	0	0	0	0	0	0	0	0	0	0	0%	0	0%
Total:	4	5	8	10	12	5	9	7	4	2	0	0	14	100%	18	100%
Controllable Non-Issued Violations																
Framing of Plate	0	0	0	0	0	0	0	0	0	0	0	0	0	0%	0	0%
Focus / Clarity of Plate	0	0	0	0	0	0	0	0	0	0	0	0	0	0%	1	13%
Dark Interior	3	1	0	2	1	1	1	1	2	0	0	0	2	43%	2	27%
Framing of Driver	0	0	0	0	0	0	0	0	0	0	0	0	0	0%	0	0%
Focus / Clarity of Driver	0	0	0	0	0	0	0	0	0	0	0	0	0	0%	0	0%
Framing of Car	0	0	0	0	0	0	0	0	0	0	0	0	0	0%	1	13%
Data/Operator Error	0	0	0	0	0	0	0	0	0	0	0	0	0	0%	0	0%
Exposure	0	0	0	0	0	0	2	0	0	0	0	0	2	57%	2	27%
Equipment Malfunction	0	0	0	0	0	0	0	0	0	0	0	0	0	0%	2	20%
ACS Expired	0	0	0	0	0	0	0	0	0	0	0	0	0	0%	0	0%
Total:	3	1	0	2	1	1	3	1	2	0	0	0	4	100%	8	100%
Summary Metrics																
Daily Average Vehicle Passes	981	778	812	951	1,049	1,188	1,298	1,452	1,353	1,662	684	42	Year to Date Monthly Average		2012 Monthly Average	
Average Issued Speed	20	19	20	22	21	25	0	20	21	0	0	0	1,021		746	
Average Issued Red Seconds	0.5	0.7	1.1	1.3	0.8	0.6	0	0.7	1.5	0	0	0	21		23	
Citation / Violation Issuance Rate	36%	50%	62%	37%	38%	40%	0%	33%	33%	0%	0%	0%	0.9		18.6	
Controllable Issuance Rate	57%	86%	100%	78%	89%	80%	0%	80%	60%	0%	0%	0%	41%		25%	
													79%		80%	



Los Angeles County MTA Expo Line
 Approach Summary Report
 Location 5137: EB to SB Exposition @ Crenshaw



Events	Jan-13	Feb-13	Mar-13	Apr-13	May-13	Jun-13	Jul-13	Aug-13	Sep-13	Oct-13	Nov-13	Dec-13	Year to Date Monthly Average		2012 Monthly Average	
													Quantity	%	Quantity	%
Non-Violations	195	324	350	388	355	204	180	180	99	133	67	95	214	90%	239	89%
Violations	19	30	37	36	48	18	9	23	22	10	0	2	23	10%	29	11%
Total:	214	354	387	424	403	222	189	203	121	143	67	97	237	100%	268	100%
Violations																
Uncontrollable Non-Issued	15	24	19	21	33	11	5	17	13	3	0	1	15	61%	14	42%
Controllable Non-Issued	1	1	0	0	0	0	0	1	1	5	0	0	2	7%	1	4%
Citations	3	5	18	15	15	7	4	5	8	2	0	1	8	31%	18	54%
Total:	19	30	37	36	48	18	9	23	22	10	0	2	24	69%	33	46%
Non-Violations																
Rear Axle Violation	0	0	0	0	0	0	0	0	0	0	0	0	0	0%	5	2%
Emergency Vehicle	0	1	0	0	0	0	0	0	1	0	0	1	1	0%	1	0%
Right Turn	0	0	0	0	0	0	0	0	0	0	0	0	0	0%	0	0%
No Violation Occurred	195	323	350	388	355	204	180	180	98	133	67	94	214	100%	238	98%
Total:	195	324	350	388	355	204	180	180	99	133	67	95	215	100%	244	100%
Uncontrollable Non-Issued Violations																
No Plate	0	0	2	1	5	1	2	0	2	0	0	0	2	8%	2	8%
Out of State Plate	1	1	3	2	0	1	0	0	0	0	0	0	2	6%	2	9%
Glare on Plate	2	0	0	0	0	0	0	0	0	0	0	0	2	7%	2	10%
Illegible Plate	0	0	0	0	0	0	0	0	0	0	0	0	0	0%	1	4%
Plate Obstructed	0	0	0	0	0	0	0	0	0	0	0	0	0	0%	1	4%
Windshield Glare	0	0	0	7	13	3	1	6	4	0	0	0	6	20%	2	9%
Driver Obstructed	0	0	0	0	0	0	0	0	0	0	0	0	0	0%	1	4%
Car Obstructed	0	0	0	0	0	0	0	0	1	0	0	0	1	4%	0	0%
No DMV Match Found	0	0	1	0	0	0	0	5	0	0	0	0	3	11%	3	11%
LASD Expired	0	0	0	0	0	0	0	0	0	0	0	0	0	0%	2	9%
LASD Return	12	11	13	8	15	6	2	5	6	0	0	0	9	31%	9	38%
Other	0	12	0	3	0	0	0	1	0	3	0	1	4	14%	0	0%
Total:	15	24	19	21	33	11	5	17	13	3	0	1	28	100%	22	100%
Controllable Non-Issued Violations																
Framing of Plate	0	0	0	0	0	0	0	0	0	0	0	0	0	0%	0	0%
Focus / Clarity of Plate	1	1	0	0	0	0	0	0	0	0	0	0	1	20%	1	25%
Dark Interior	0	0	0	0	0	0	0	0	1	0	0	0	1	20%	0	0%
Framing of Driver	0	0	0	0	0	0	0	0	0	0	0	0	0	0%	0	0%
Focus / Clarity of Driver	0	0	0	0	0	0	0	0	0	0	0	0	0	0%	0	0%
Framing of Car	0	0	0	0	0	0	0	0	0	0	0	0	0	0%	0	0%
Data/Operator Error	0	0	0	0	0	0	0	0	0	0	0	0	0	0%	1	25%
Exposure	0	0	0	0	0	0	0	0	0	0	0	0	0	0%	0	0%
Equipment Malfunction	0	0	0	0	0	0	0	1	0	5	0	0	3	60%	2	50%
ACS Expired	0	0	0	0	0	0	0	0	0	0	0	0	0	0%	0	0%
Total:	1	1	0	0	0	0	0	1	1	5	0	0	5	100%	4	100%
Summary Metrics																
Daily Average Vehicle Passes	451	367	433	386	485	530	585	752	653	819	328	662	Year to Date Monthly Average		2012 Monthly Average	
Average Issued Speed	20	18	18	19	18	17	17	15	18	15	0	16	538		417	
Average Issued Red Seconds	40.1	18.7	16.3	9.2	23.7	92.3	44.8	124.4	64.3	63.6	0	57.5	50.5		29.7	
Citation / Violation Issuance Rate	16%	17%	49%	42%	31%	39%	44%	22%	36%	20%	0%	50%	33%		50%	
Controllable Issuance Rate	75%	83%	100%	100%	100%	100%	100%	83%	89%	29%	0%	100%	87%		98%	



**Los Angeles County MTA Expo Line
Customer Service Report
December 2013**

Calls For Information

Reason for Call	Dec-13	3 Month Average	Year to Date Average	Year to Date Total	2012 Average
<i>Appointment</i>	3	1	2	13	2
<i>Bail</i>	5	3	3	37	4
<i>Complaint</i>	0	0	0	0	0
<i>Contest Violation</i>	8	4	5	65	6
<i>Courtesy Notice</i>	0	1	1	5	3
<i>Explain Citation</i>	0	1	2	22	2
<i>Explain Court</i>	0	0	0	0	0
<i>Explain the Project</i>	0	0	0	0	0
<i>Extension</i>	5	2	3	26	2
<i>Other</i>	0	0	0	0	0
<i>Affidavit of Non-Liability</i>	6	2	5	53	5
<i>Affidavit of Non-Liability Status</i>	0	0	1	5	0
<i>Traffic School</i>	1	0	1	3	1
Total Calls	28	15	24	229	25
Appointments Scheduled	3	1	2	11	2
Affidavits of Non-Liability Processed	299	313	297	3,565	277
Court Packets Prepared	24	25	27	319	4



**Los Angeles County MTA Expo Line
Monthly Citation Yield - By Location
December 2013**

Direction	Location	Code	Days of Enforcement	Events	Violations	Citations	Yield*
SB to EB	Flower @ Washintgon	5008	31	76	9	85	2.74
SB to WB	Flower @ USC Trade Tech	5018	31	87	20	107	3.45
SB to EB	Flower @ 23rd	5028	31	767	3	770	24.84
SB to EB	Flower @ Adams	5038	31	858	34	892	28.77
SB to EB	Flower @ 28th	5048	31	46	33	79	2.55
SB to EB	Flower @ 30th	5058	31	120	2	122	3.94
SB to EB	Flower @ Jefferson	5068	31	114	8	122	3.94
EB to NB	Exposition @ Watt	5077	31	0	0	0	0.00
WB to SB	Exposition @ Bill Robertson	5079	31	116	14	130	4.19
EB to NB	Exposition @ Vermont	5087	31	296	101	397	12.81
WB to SB	Exposition @ Vermont	5089	31	135	13	148	4.77
EB to NB	Exposition @ Raymond	5097	31	1,097	4	1101	35.52
EB to NB	Exposition @ Normandie	5107	31	130	30	160	5.16
WB to SB	Exposition @ Normandie	5109	31	253	31	284	9.16
EB to NB	Exposition @ Halldale	5117	31	88	14	102	3.29
WB to SB	Exposition @ Denker	5119	31	111	34	145	4.68
EB to NB	Exposition @ Western	5127	31	201	114	315	10.16
WB to SB	Exposition @ Western	5129	0	0	0	0	NA
EB to SB	Exposition @ Crenshaw	5137	31	4,495	464	4959	159.97
Totals			29	8,990	928	9918	337.71

*Yield is the number of citations issued per day of enforcement.



Los Angeles County MTA Expo Line
Disposition Summary Report
December 2013

Disposition Type	Dec-13		3 Month Average		YTD Total		YTD Average		2012 Average	
	Count	Amount Paid	Count	Amount Paid	Count	Amount Paid	Count	Amount Paid	Count	Amount Paid
<i>Bail Forfeiture</i>	21	\$10,833.00	34	\$16,949	364	\$184,623	30	\$15,385	17	\$8,250
<i>Fine Paid</i>	22	\$11,360.00	18	\$9,249	193	\$94,611	16	\$7,884	1	\$260
<i>Department Void</i>	0	\$0.00	0	\$0	0	\$0	0	\$0	3	\$0
<i>Not Guilty</i>	28	\$0.00	45	\$0	561	\$0	47	\$0	16	\$0
<i>Section D Void</i>	299	\$0.00	313	\$0	3,565	\$0	297	\$0	177	\$0
<i>Traffic School</i>	27	\$13,885.00	28	\$12,985	312	\$156,230	26	\$13,019	10	\$5,360
Court Gross Total	397	\$36,078.00	439	\$12,985	4,995	\$435,464	416	\$36,289	225	\$13,870
MTA Gross Total*	70	\$10,159.68	80	\$11,662	869	\$126,015	72	\$10,501	28	\$4,012

*Logic built on following model (assuming the new 2009 fine and fee structure):
 MTA receives \$146.31 of \$446.00 citation where bail forfeiture and fine paid occurs
 MTA receives \$148.05 of \$509.00 citation when traffic school option is paid for



**Los Angeles County MTA Expo Line
Performance Report
December 2013**

	<u>Total</u> <u>Events</u>	<u>Non</u> <u>Violations</u>	<u>Potential</u> <u>Violations</u>	<u>Percent</u> <u>Citable</u>	<u>Non Issued</u> <u>Violations</u>	<u>No DMV</u> <u>Match</u>	<u>Police/</u> <u>Client</u> <u>Rejected</u>	<u>Citations</u> <u>Issued</u>	<u>DMV</u> <u>Match</u> <u>Rate</u>	<u>Issuance</u> <u>Rate</u>	<u>Dispo</u> <u>Paid</u>	<u>Pay</u> <u>Rate</u>	<u>Closed</u> <u>No Pay</u>	<u>Pending</u>	<u>Closure</u> <u>Rate</u>	<u>Court</u> <u>Packs</u>	<u>Contest</u> <u>Rate</u>
Jan-12	3,868	3,371	497	12.85%	374	45	107	123	83.64%	24.75%	44	36%	18	61	50%	0	0.0%
Feb-12	5,540	4,868	672	12.13%	492	61	128	180	83.47%	26.79%	58	32%	35	87	52%	0	0.0%
Mar-12	5,820	5,012	808	13.88%	595	69	181	213	85.10%	26.36%	45	21%	53	115	46%	0	0.0%
Apr-12	5,626	4,943	683	12.14%	523	65	128	160	81.59%	23.43%	37	23%	42	81	49%	0	0.0%
May-12	5,982	5,290	692	11.57%	520	21	149	172	93.86%	24.86%	52	30%	33	87	49%	0	0.0%
Jun-12	4,596	4,209	387	8.42%	302	27	65	85	84.75%	21.96%	20	24%	19	46	46%	2	0.0%
Jul-12	3,935	3,536	399	10.14%	288	21	88	111	90.45%	27.82%	23	21%	28	60	46%	6	4.9%
Aug-12	3,870	3,284	586	15.14%	394	54	86	192	83.73%	32.76%	45	23%	47	100	48%	3	1.7%
Sep-12	5,640	5,071	569	10.09%	361	12	108	208	96.34%	36.56%	52	25%	60	96	54%	2	0.9%
Oct-12	5,957	5,329	628	10.54%	433	0	157	195	100.00%	31.05%	43	22%	40	112	43%	6	3.8%
Nov-12	4,290	3,814	476	11.10%	364	0	134	112	100.00%	23.53%	26	23%	28	58	48%	3	1.7%
Dec-12	3,484	3,199	285	8.18%	203	0	82	82	100.00%	28.77%	16	20%	22	44	46%	5	5.9%
Jan-13	4,457	4,020	437	9.80%	306	5	98	131	97.86%	29.98%	17	13%	58	56	57%	21	18.9%
Feb-13	4,868	4,322	546	11.22%	381	8	136	165	97.41%	30.22%	28	17%	66	71	57%	31	16.1%
Mar-13	6,866	6,222	644	9.38%	386	5	157	258	98.81%	40.06%	48	19%	115	95	63%	32	15.4%
Apr-13	4,882	4,280	602	12.33%	375	1	125	227	99.72%	37.71%	27	12%	105	95	58%	25	12.0%
May-13	5,893	5,223	670	11.37%	426	0	165	244	100.00%	36.42%	33	14%	95	116	52%	32	15.4%
Jun-13	7,106	6,661	445	6.26%	300	0	119	145	100.00%	32.58%	24	17%	56	65	55%	32	15.4%
Jul-13	4,165	3,646	519	12.46%	352	1	139	167	99.67%	32.18%	17	10%	68	82	51%	38	44.7%
Aug-13	4,506	3,811	695	15.42%	503	69	132	192	82.44%	27.63%	29	15%	35	128	33%	9	8.1%
Sep-13	4,844	4,231	613	12.65%	460	56	176	153	85.45%	24.96%	17	11%	20	116	24%	30	15.6%
Oct-13	5,062	4,509	553	10.92%	402	56	128	151	83.28%	27.31%	5	3%	3	143	5%	32	15.4%
Nov-13	4,445	3,941	504	11.34%	374	42	118	130	85.52%	25.79%	1	1%	0	129	1%	13	6.3%
Dec-13	4,592	4,126	466	10.15%	371	53	128	95	80.80%	20.39%	0	0%	0	95	0%	24	12.3%
Total	120,294	106,918	13376	11.12%	9,485	671	3034	3,891	91.17%	29.09%	707	20.66%	1,046	2,138	51.83%	346	8.94%

* Pay Rate and Closure Rate percentages are based on a 4 month lag

** Contested Citations take into account a 6 month lag from the violation date to the trail date.