



## Expo Line Monthly Report



**Metro**

Los Angeles County  
Metropolitan Transportation Authority

**January - December 2018**

**CONDUENT**



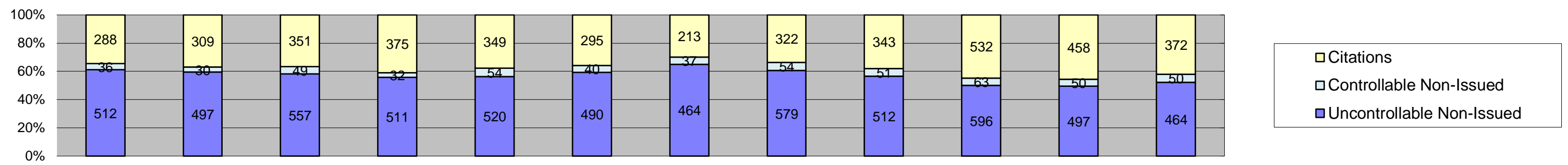
Prepared by: Conduent State and Local Solutions  
Confidential

## Table of Contents

Report Title	Page
<i>Approach Summary Report, All Locations.....</i>	3
<i>Approach Summary Report, Location 5008: SB to EB Flower @ Washington.....</i>	4
<i>Approach Summary Report, Location 5018: SB to WB Flower @ USC Trade Tech.....</i>	5
<i>Approach Summary Report, Location 5028: SB to EB Flower @ 23rd.....</i>	6
<i>Approach Summary Report, Location 5038: SB to EB Flower @ Adams.....</i>	7
<i>Approach Summary Report, Location 5048: SB to EB Flower @ 28th St.....</i>	8
<i>Approach Summary Report, Location 5058: Sb to EB Flower @ 30th St.....</i>	9
<i>Approach Summary Report, Location 5068: SB to EB Flower @ Jefferson.....</i>	10
<i>Approach Summary Report, Location 5077: EB to NB Exposition @ Watt.....</i>	11
<i>Approach Summary Report, Location 5079: WB to SB Exposition @ Bill Robertson.....</i>	12
<i>Approach Summary Report, Location 5087: EB to NB Exposition @ Vermont.....</i>	13
<i>Approach Summary Report, Location 5089: WB to SB Exposition @ Vermont.....</i>	14
<i>Approach Summary Report, Location 5097: EB to NB Exposition @ Raymond.....</i>	15
<i>Approach Summary Report, Location 5107: EB to NB Exposition @ Normandie.....</i>	16
<i>Approach Summary Report, Location 5109: WB to SB Exposition @ Normandie.....</i>	17
<i>Approach Summary Report, Location 5117: EB to NB Exposition @ Halldale.....</i>	18
<i>Approach Summary Report, Location 5119 WB to SB Exposition @ Denker.....</i>	19
<i>Approach Summary Report, Location 5127: EB to NB Exposition @ Western.....</i>	20
<i>Approach Summary Report, Location 5129: WB to SB Exposition @ Western.....</i>	21
<i>Approach Summary Report, Location 5137: EB to SB Exposition @ Crenshaw.....</i>	22
<i>Monthly Citation Yield Report.....</i>	23



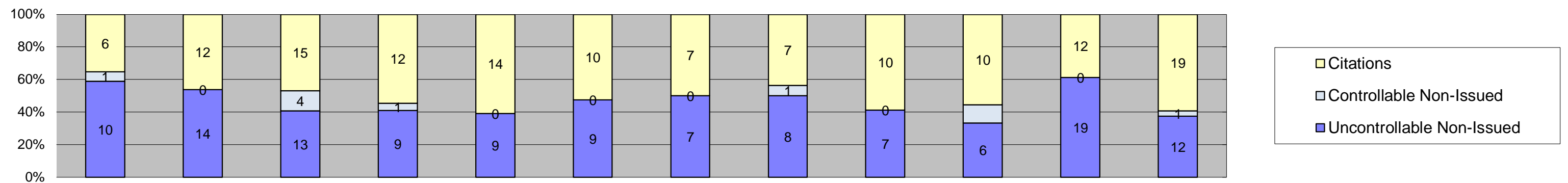
Los Angeles County MTA Expo Line  
Approach Summary Report  
All Locations  
2018



Events	2018												Year to Date Monthly Average	
	Jan-18	Feb-18	Mar-18	Apr-18	May-18	Jun-18	Jul-18	Aug-18	Sep-18	Oct-18	Nov-18	Dec-18	Quantity	%
Non-Violations	12,735	12,518	13,860	12,902	13,947	12,865	11,429	11,263	10,303	11,093	9,867	13,163	12,162	93%
Violations	836	836	957	918	923	825	714	955	906	1,191	1,005	886	913	7%
<b>Total:</b>	<b>13,571</b>	<b>13,354</b>	<b>14,817</b>	<b>13,820</b>	<b>14,870</b>	<b>13,690</b>	<b>12,143</b>	<b>12,218</b>	<b>11,209</b>	<b>12,284</b>	<b>10,872</b>	<b>14,049</b>	<b>13,075</b>	<b>100%</b>
<b>Violations</b>														
Uncontrollable Non-Issued	512	497	557	511	520	490	464	579	512	596	497	464	517	57%
Controllable Non-Issued	36	30	49	32	54	40	37	54	51	63	50	50	46	5%
Citations	288	309	351	375	349	295	213	322	343	532	458	372	351	38%
<b>Total:</b>	<b>836</b>	<b>836</b>	<b>957</b>	<b>918</b>	<b>923</b>	<b>825</b>	<b>714</b>	<b>955</b>	<b>906</b>	<b>1,191</b>	<b>1,005</b>	<b>886</b>	<b>913</b>	<b>62%</b>
<b>Non-Violations</b>														
Emergency Vehicle Non-Issuable	20	19	22	21	22	29	22	20	29	15	27	26	23	0%
Emergency Vehicle PD	0	0	0	0	4	3	1	2	0	0	0	4	3	0%
Intersection Control in Progress-PD	0	1	0	2	0	1	0	0	0	1	0	0	1	0%
Gate Down/ No Train	0	0	0	0	0	0	0	0	0	0	0	0	0	0%
No Violation Occurred	10,218	10,082	11,221	10,376	11,384	10,261	8,876	8,653	7,806	5,206	4,614	5,310	8,667	63%
Rear Axle Activation	108	90	89	104	64	77	79	141	158	147	140	111	109	1%
Right Turn- No Violation	0	0	0	0	0	0	0	0	0	0	0	0	0	0%
Test Shot	2,386	2,325	2,528	2,397	2,473	2,494	2,451	2,447	2,259	2,336	2,187	4,623	2,576	19%
Train Activation	0	0	0	0	0	0	0	0	51	3,388	2,899	3,086	2,356	17%
Amber Time Low	1	0	0	0	0	0	0	0	0	0	0	0	1	0%
Vehicle Stopped- PD	2	1	0	2	0	0	0	0	0	0	0	3	2	0%
<b>Total:</b>	<b>12,735</b>	<b>12,518</b>	<b>13,860</b>	<b>12,902</b>	<b>13,947</b>	<b>12,865</b>	<b>11,429</b>	<b>11,263</b>	<b>10,303</b>	<b>11,093</b>	<b>9,867</b>	<b>13,163</b>	<b>13,737</b>	<b>100%</b>
<b>Uncontrollable Non-Issued Violations</b>														
Administrative Dismissal	0	0	0	0	0	0	0	1	0	0	0	0	1	0%
Address/CDL/DOB Match Fail	0	0	0	0	1	0	0	0	0	0	0	0	1	0%
Car Obstructed	6	5	10	12	5	8	1	14	13	22	14	8	10	2%
Conditions Beyond Control	0	0	0	0	0	0	0	0	0	0	0	0	0	0%
Driver Identity Unclear	62	54	28	27	12	21	22	14	12	35	6	5	25	5%
Driver Obstructed	21	28	40	38	32	43	26	53	36	43	36	41	36	7%
Exposed	0	0	0	0	0	0	0	0	0	0	0	0	0	0%
Emergency Vehicle Issue	5	6	4	6	4	9	3	7	9	5	6	6	6	1%
Glare on Plate	146	158	133	173	174	127	115	139	149	136	132	138	143	26%
Glare on Windshield	35	20	27	40	23	65	74	71	32	40	36	48	43	8%
Illegible Plate	3	1	1	1	2	0	7	6	0	9	4	2	4	1%
Interest of Justice- PD	0	1	0	0	1	0	0	0	0	0	0	0	1	0%
Image Quality- PD	17	9	14	16	20	21	13	15	2	1	19	3	13	2%
Issuance Criteria Not Met- PD	0	0	0	0	0	0	0	0	0	14	1	0	8	1%
No Warning Sign	0	0	0	0	0	0	0	0	0	0	0	0	0	0%
No Plate	144	149	198	155	181	150	165	200	207	235	193	133	176	32%
No Speed Captured	0	0	0	0	0	0	0	0	0	0	0	0	0	0%
Obstruction In Photo- PD	32	32	22	17	27	21	16	21	11	20	14	6	20	4%
Out of State	10	10	16	5	11	10	16	18	11	14	9	11	12	2%
Plate Obstructed	31	23	32	21	27	15	6	19	17	19	7	4	18	3%
Short Yellow- PD	0	0	0	0	0	0	0	0	0	0	0	0	0	0%
Third Party Damage	0	0	0	0	0	0	0	0	0	0	0	0	0	0%
TSB Expired	0	1	0	0	0	0	0	1	12	3	1	0	4	1%
TSB No Hit	0	0	32	0	0	0	0	0	1	0	19	59	28	5%
<b>Total:</b>	<b>512</b>	<b>497</b>	<b>557</b>	<b>511</b>	<b>520</b>	<b>490</b>	<b>464</b>	<b>579</b>	<b>512</b>	<b>596</b>	<b>497</b>	<b>464</b>	<b>547</b>	<b>100%</b>
<b>Controllable Non-Issued Violations</b>														
Conduent Expire	0	0	0	0	0	0	0	0	0	0	0	0	0	0%
Clarity of Plate	0	0	0	0	2	0	0	0	0	0	0	0	2	3%
Clarity of Driver	0	0	0	0	0	0	0	0	0	0	0	0	0	0%
Dark Interior	12	8	14	13	16	11	8	9	21	36	28	29	17	30%
Data Box Related- PD	0	0	0	0	0	0	0	0	0	0	0	0	0	0%
Data Box Data Error- PD	0	0	0	0	2	1	0	0	0	0	0	0	2	3%
Data Entry Error	6	10	17	4	5	3	8	17	10	4	6	4	8	14%
Exposed	0	0	0	0	0	0	0	0	0	0	0	0	0	0%
Equipment Malfunction	5	0	3	0	2	4	1	5	2	8	2	0	4	6%
Framing- PD	0	0	0	0	0	0	0	0	0	0	0	0	0	0%
Framing of Car	6	9	7	15	19	17	18	20	16	15	14	17	14	25%
Framing of Driver	0	0	0	0	0	0	0	3	0	0	0	0	3	5%
Operator Error	0	0	0	0	0	0	0	0	0	0	0	0	0	0%
Framing of Plate	1	0	0	0	0	0	0	0	0	0	0	0	1	2%
Reject Expired	0	0	0	0	0	0	0	0	2	0	0	0	2	3%
Speed Not Determined	6	3	8	0	8	4	2	0	0	0	0	0	5	9%
<b>Total:</b>	<b>36</b>	<b>30</b>	<b>49</b>	<b>32</b>	<b>54</b>	<b>40</b>	<b>37</b>	<b>54</b>	<b>51</b>	<b>63</b>	<b>50</b>	<b>50</b>	<b>58</b>	<b>100%</b>
<b>Summary Metrics</b>														
Daily Average Vehicle Passes	0	0	0	0	0	0	0	0	0	0	0	0	0	0
Average Issued Speed	372	347	375	373	358	333	333	325	323	365	363	362	352	
Average Issued Red Seconds	729	808	851	1,195	1,373	898	1,442	501	601	610	1,202	868	923.2	
Citation / Violation Issuance Rate	34%	37%	37%	41%	38%	36%	30%	34%	38%	45%	46%	42%	38%	
Controllable Issuance Rate	89%	91%	88%	92%	87%	88%	85%	86%	87%	89%	90%	88%	88%	



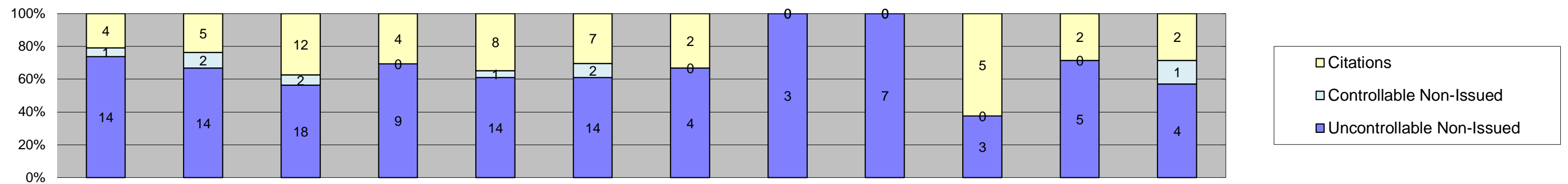
Los Angeles County MTA Expo Line  
 Approach Summary Report  
 Location 5008: SB to EB Flower @ Washington



Events	Jan-18	Feb-18	Mar-18	Apr-18	May-18	Jun-18	Jul-18	Aug-18	Sep-18	Oct-18	Nov-18	Dec-18	Year to Date Monthly Average	
													Quantity	%
Non-Violations	727	718	731	657	739	616	572	533	502	644	499	445	615	97%
Violations	17	26	32	22	23	19	14	16	17	18	31	32	22	3%
<b>Total:</b>	<b>744</b>	<b>744</b>	<b>763</b>	<b>679</b>	<b>762</b>	<b>635</b>	<b>586</b>	<b>549</b>	<b>519</b>	<b>662</b>	<b>530</b>	<b>477</b>	<b>638</b>	<b>100%</b>
<b>Violations</b>														
Uncontrollable Non-Issued	10	14	13	9	9	9	7	8	7	6	19	12	10	44%
Controllable Non-Issued	1	0	4	1	0	0	0	1	0	2	0	1	2	7%
Citations	6	12	15	12	14	10	7	7	10	10	12	19	11	48%
<b>Total:</b>	<b>17</b>	<b>26</b>	<b>32</b>	<b>22</b>	<b>23</b>	<b>19</b>	<b>14</b>	<b>16</b>	<b>17</b>	<b>18</b>	<b>31</b>	<b>32</b>	<b>23</b>	<b>52%</b>
<b>Non-Violations</b>														
Emergency Vehicle Non-Issuable	1	1	1	0	0	1	1	2	1	1	1	0	1	0%
Emergency Vehicle PD	0	0	0	0	0	0	0	0	0	0	0	0	0	0%
Intersection Control in Progress-PD	0	0	0	0	0	0	0	0	0	0	0	0	0	0%
Gate Down/ No Train	0	0	0	0	0	0	0	0	0	0	0	0	0	0%
No Violation Occurred	589	582	595	529	603	491	440	405	378	247	190	151	433	56%
Rear Axle Activation	8	7	8	5	7	8	11	8	10	6	12	6	8	1%
Right Turn- No Violation	0	0	0	0	0	0	0	0	0	0	0	0	0	0%
Test Shot	129	128	127	123	129	116	120	118	113	125	110	114	121	16%
Train Activation	0	0	0	0	0	0	0	0	0	265	186	174	208	27%
Amber Time Low	0	0	0	0	0	0	0	0	0	0	0	0	0	0%
Vehicle Stopped- PD	0	0	0	0	0	0	0	0	0	0	0	0	0	0%
<b>Total:</b>	<b>727</b>	<b>718</b>	<b>731</b>	<b>657</b>	<b>739</b>	<b>616</b>	<b>572</b>	<b>533</b>	<b>502</b>	<b>644</b>	<b>499</b>	<b>445</b>	<b>772</b>	<b>100%</b>
<b>Uncontrollable Non-Issued Violations</b>														
Administrative Dismissal	0	0	0	0	0	0	0	0	0	0	0	0	0	0%
Address/CDL/DOB Match Fail	0	0	0	0	0	0	0	0	0	0	0	0	0	0%
Car Obstructed	0	0	0	0	0	0	0	0	1	0	1	0	1	5%
Conditions Beyond Control	0	0	0	0	0	0	0	0	0	0	0	0	0	0%
Driver Identity Unclear	3	6	2	1	0	1	1	0	0	1	0	0	2	10%
Driver Obstructed	0	0	0	0	1	0	0	0	0	0	0	3	2	9%
Exposed	0	0	0	0	0	0	0	0	0	0	0	0	0	0%
Emergency Vehicle Issue	0	0	0	0	0	0	0	0	0	0	1	0	1	5%
Glare on Plate	1	3	0	1	0	1	0	0	0	1	2	4	2	9%
Glare on Windshield	0	0	1	2	1	1	0	0	0	0	1	0	1	6%
Illegible Plate	0	0	0	0	0	0	0	0	0	0	0	0	0	0%
Interest of Justice- PD	0	0	0	0	0	0	0	0	0	0	0	0	0	0%
Image Quality- PD	0	0	1	0	0	0	0	0	1	0	0	0	1	5%
Issuance Criteria Not Met- PD	0	0	0	0	0	0	0	0	0	0	0	0	0	0%
No Warning Sign	0	0	0	0	0	0	0	0	0	0	0	0	0	0%
No Plate	3	3	7	4	5	6	5	8	4	3	8	3	5	23%
No Speed Captured	0	0	0	0	0	0	0	0	0	0	0	0	0	0%
Obstruction In Photo- PD	1	2	0	1	1	0	0	0	0	0	3	0	2	7%
Out of State	2	0	1	0	1	0	1	0	1	1	0	0	1	5%
Plate Obstructed	0	0	1	0	0	0	0	0	0	0	0	0	1	5%
Short Yellow- PD	0	0	0	0	0	0	0	0	0	0	0	0	0	0%
Third Party Damage	0	0	0	0	0	0	0	0	0	0	0	0	0	0%
TSB Expired	0	0	0	0	0	0	0	0	0	0	0	0	0	0%
TSB No Hit	0	0	0	0	0	0	0	0	0	0	3	2	3	12%
<b>Total:</b>	<b>10</b>	<b>14</b>	<b>13</b>	<b>9</b>	<b>9</b>	<b>9</b>	<b>7</b>	<b>8</b>	<b>7</b>	<b>6</b>	<b>19</b>	<b>12</b>	<b>21</b>	<b>100%</b>
<b>Controllable Non-Issued Violations</b>														
Conduent Expire	0	0	0	0	0	0	0	0	0	0	0	0	0	0%
Clarity of Plate	0	0	0	0	0	0	0	0	0	0	0	0	0	0%
Clarity of Driver	0	0	0	0	0	0	0	0	0	0	0	0	0	0%
Dark Interior	0	0	0	1	0	0	0	0	0	1	0	1	1	29%
Data Box Related- PD	0	0	0	0	0	0	0	0	0	0	0	0	0	0%
Data Box Data Error- PD	0	0	0	0	0	0	0	0	0	0	0	0	0	0%
Data Entry Error	0	0	0	0	0	0	0	0	0	0	0	0	0	0%
Exposed	0	0	0	0	0	0	0	0	0	0	0	0	0	0%
Equipment Malfunction	1	0	3	0	0	0	0	1	0	1	0	0	2	43%
Framing- PD	0	0	0	0	0	0	0	0	0	0	0	0	0	0%
Framing of Car	0	0	0	0	0	0	0	0	0	0	0	0	0	0%
Framing of Driver	0	0	0	0	0	0	0	0	0	0	0	0	0	0%
Operator Error	0	0	0	0	0	0	0	0	0	0	0	0	0	0%
Framing of Plate	0	0	0	0	0	0	0	0	0	0	0	0	0	0%
Reject Expired	0	0	0	0	0	0	0	0	0	0	0	0	0	0%
Speed Not Determined	0	0	1	0	0	0	0	0	0	0	0	0	1	29%
<b>Total:</b>	<b>1</b>	<b>0</b>	<b>4</b>	<b>1</b>	<b>0</b>	<b>0</b>	<b>0</b>	<b>1</b>	<b>0</b>	<b>2</b>	<b>0</b>	<b>1</b>	<b>4</b>	<b>100%</b>
<b>Summary Metrics</b>														
Daily Average Vehicle Passes	0	0	0	0	0	0	0	0	0	0	0	0	0	0
Average Issued Speed	24	22	25	21	23	24	22	20	24	25	21	23	23	23
Average Issued Red Seconds	6.2	32.9	6.9	32.3	10.5	0.6	4.2	13.0	3.5	2.7	0.5	11.5	10.4	10.4
Citation / Violation Issuance Rate	35%	46%	47%	55%	61%	53%	50%	44%	59%	56%	39%	59%	50%	50%
Controllable Issuance Rate	86%	100%	79%	92%	100%	100%	100%	88%	100%	83%	100%	95%	94%	94%



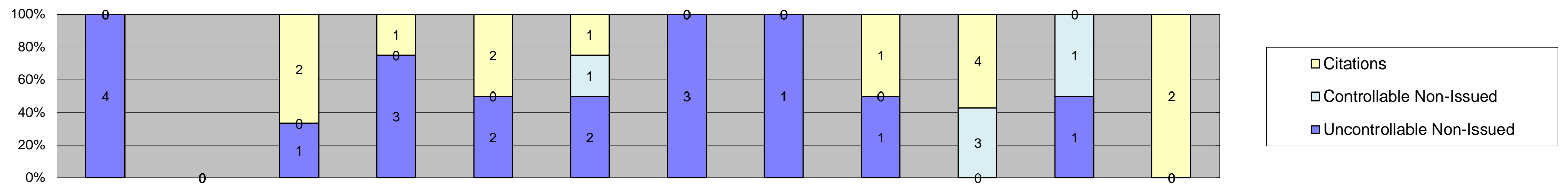
Los Angeles County MTA Expo Line  
 Approach Summary Report  
 Location 5018: SB to WB Flower @ USC Trade Tech



Events	Jan-18	Feb-18	Mar-18	Apr-18	May-18	Jun-18	Jul-18	Aug-18	Sep-18	Oct-18	Nov-18	Dec-18	Year to Date Monthly Average	
													Quantity	%
Non-Violations	1,920	2,136	2,559	2,206	2,576	2,520	1,755	783	786	829	631	3,175	1,823	99%
Violations	19	21	32	13	23	23	6	3	7	8	7	7	14	1%
<b>Total:</b>	<b>1,939</b>	<b>2,157</b>	<b>2,591</b>	<b>2,219</b>	<b>2,599</b>	<b>2,543</b>	<b>1,761</b>	<b>786</b>	<b>793</b>	<b>837</b>	<b>638</b>	<b>3,182</b>	<b>1,837</b>	<b>100%</b>
<b>Violations</b>														
Uncontrollable Non-Issued	14	14	18	9	14	14	4	3	7	3	5	4	9	58%
Controllable Non-Issued	1	2	2	0	1	2	0	0	0	0	0	1	2	10%
Citations	4	5	12	4	8	7	2	0	0	5	2	2	5	33%
<b>Total:</b>	<b>19</b>	<b>21</b>	<b>32</b>	<b>13</b>	<b>23</b>	<b>23</b>	<b>6</b>	<b>3</b>	<b>7</b>	<b>8</b>	<b>7</b>	<b>7</b>	<b>16</b>	<b>67%</b>
<b>Non-Violations</b>														
Emergency Vehicle Non-Issuable	0	0	0	1	0	0	0	1	0	0	0	0	1	0%
Emergency Vehicle PD	0	0	0	0	0	0	0	0	0	0	0	0	0	0%
Intersection Control in Progress-PD	0	0	0	0	0	0	0	0	0	0	0	0	0	0%
Gate Down/ No Train	0	0	0	0	0	0	0	0	0	0	0	0	0	0%
No Violation Occurred	1,768	1,991	2,398	2,050	2,420	2,341	1,591	654	671	505	380	545	1,443	74%
Rear Axle Activation	4	6	1	0	2	1	0	0	0	0	1	2	2	0%
Right Turn- No Violation	0	0	0	0	0	0	0	0	0	0	0	0	0	0%
Test Shot	148	139	160	154	154	178	164	128	115	109	105	2,499	338	17%
Train Activation	0	0	0	0	0	0	0	0	0	215	145	129	163	8%
Amber Time Low	0	0	0	0	0	0	0	0	0	0	0	0	0	0%
Vehicle Stopped- PD	0	0	0	1	0	0	0	0	0	0	0	0	1	0%
<b>Total:</b>	<b>1,920</b>	<b>2,136</b>	<b>2,559</b>	<b>2,206</b>	<b>2,576</b>	<b>2,520</b>	<b>1,755</b>	<b>783</b>	<b>786</b>	<b>829</b>	<b>631</b>	<b>3,175</b>	<b>1,948</b>	<b>100%</b>
<b>Uncontrollable Non-Issued Violations</b>														
Administrative Dismissal	0	0	0	0	0	0	0	0	0	0	0	0	0	0%
Address/CDL/DOB Match Fail	0	0	0	0	0	0	0	0	0	0	0	0	0	0%
Car Obstructed	0	0	0	0	0	0	0	0	0	0	0	0	0	0%
Conditions Beyond Control	0	0	0	0	0	0	0	0	0	0	0	0	0	0%
Driver Identity Unclear	1	2	0	0	0	2	0	0	1	0	0	0	2	8%
Driver Obstructed	3	5	1	0	1	0	0	0	3	0	1	1	2	12%
Exposed	0	0	0	0	0	0	0	0	0	0	0	0	0	0%
Emergency Vehicle Issue	0	0	0	0	0	1	0	0	0	0	0	0	1	5%
Glare on Plate	3	2	2	0	1	1	0	0	0	0	1	0	2	9%
Glare on Windshield	1	0	3	1	1	4	1	1	1	0	0	0	2	9%
Illegible Plate	0	0	0	0	0	0	0	0	0	0	0	0	0	0%
Interest of Justice- PD	0	0	0	0	0	0	0	0	0	0	0	0	0	0%
Image Quality- PD	0	0	2	2	0	1	0	0	0	0	0	0	2	9%
Issuance Criteria Not Met- PD	0	0	0	0	0	0	0	0	0	0	0	0	0	0%
No Warning Sign	0	0	0	0	0	0	0	0	0	0	0	0	0	0%
No Plate	3	3	6	5	10	5	2	1	2	3	3	3	4	21%
No Speed Captured	0	0	0	0	0	0	0	0	0	0	0	0	0	0%
Obstruction In Photo- PD	1	1	1	0	0	0	0	1	0	0	0	0	1	5%
Out of State	1	0	1	0	1	0	1	0	0	0	0	0	1	5%
Plate Obstructed	1	1	0	1	0	0	0	0	0	0	0	0	1	5%
Short Yellow- PD	0	0	0	0	0	0	0	0	0	0	0	0	0	0%
Third Party Damage	0	0	0	0	0	0	0	0	0	0	0	0	0	0%
TSB Epired	0	0	0	0	0	0	0	0	0	0	0	0	0	0%
TSB No Hit	0	0	2	0	0	0	0	0	0	0	0	0	2	11%
<b>Total:</b>	<b>14</b>	<b>14</b>	<b>18</b>	<b>9</b>	<b>14</b>	<b>14</b>	<b>4</b>	<b>3</b>	<b>7</b>	<b>3</b>	<b>5</b>	<b>4</b>	<b>18</b>	<b>100%</b>
<b>Controllable Non-Issued Violations</b>														
Conduent Expire	0	0	0	0	0	0	0	0	0	0	0	0	0	0%
Clarity of Plate	0	0	0	0	0	0	0	0	0	0	0	0	0	0%
Clarity of Driver	0	0	0	0	0	0	0	0	0	0	0	0	0	0%
Dark Interior	0	0	0	0	0	0	0	0	0	0	0	0	0	0%
Data Box Related- PD	0	0	0	0	0	0	0	0	0	0	0	0	0	0%
Data Box Data Error- PD	0	0	0	0	0	0	0	0	0	0	0	0	0	0%
Data Entry Error	0	0	2	0	0	0	0	0	0	0	0	0	2	38%
Exposed	0	0	0	0	0	0	0	0	0	0	0	0	0	0%
Equipment Malfunction	0	0	0	0	1	1	0	0	0	0	0	0	1	19%
Framing- PD	0	0	0	0	0	0	0	0	0	0	0	0	0	0%
Framing of Car	0	0	0	0	0	0	0	0	0	0	0	1	1	19%
Framing of Driver	0	0	0	0	0	0	0	0	0	0	0	0	0	0%
Operator Error	0	0	0	0	0	0	0	0	0	0	0	0	0	0%
Framing of Plate	0	0	0	0	0	0	0	0	0	0	0	0	0	0%
Reject Expired	0	0	0	0	0	0	0	0	0	0	0	0	0	0%
Speed Not Determined	1	2	0	0	0	1	0	0	0	0	0	0	1	25%
<b>Total:</b>	<b>1</b>	<b>2</b>	<b>2</b>	<b>0</b>	<b>1</b>	<b>2</b>	<b>0</b>	<b>0</b>	<b>0</b>	<b>0</b>	<b>0</b>	<b>1</b>	<b>5</b>	<b>100%</b>
<b>Summary Metrics</b>														
Daily Average Vehicle Passes	0	0	0	0	0	0	0	0	0	0	0	0	0	0
Average Issued Speed	18	16	19	20	18	18	14	17	19	16	16	14	17	
Average Issued Red Seconds	31.2	8.2	15.3	351.0	11.4	13.9	106.8	46.5	17.1	5.6	6.1	0.5	51.1	
Citation / Violation Issuance Rate	21%	24%	38%	31%	35%	30%	33%	0%	0%	63%	29%	29%	33%	
Controllable Issuance Rate	80%	71%	86%	100%	89%	78%	100%	0%	0%	100%	100%	67%	87%	



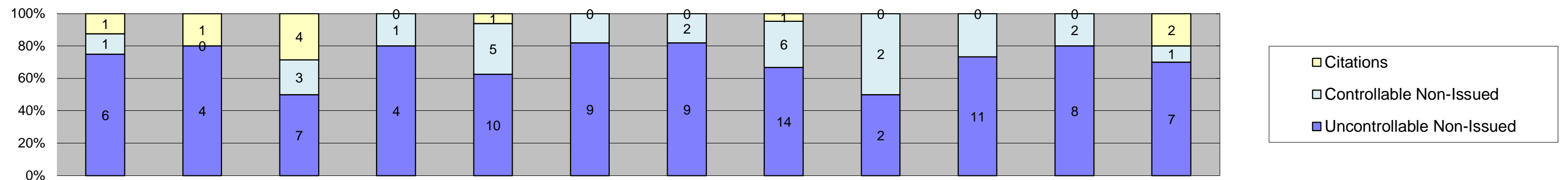
Los Angeles County MTA Expo Line  
 Approach Summary Report  
 Location 5028: SB to EB Flower @ 23rd



Events	Jan-18	Feb-18	Mar-18	Apr-18	May-18	Jun-18	Jul-18	Aug-18	Sep-18	Oct-18	Nov-18	Dec-18	Year to Date Monthly Average	
													Quantity	%
Non-Violations	1,056	1,081	1,167	1,156	1,114	1,199	1,086	1,207	1,231	1,210	1,044	967	1,127	100%
Violations	4	0	3	4	4	4	3	1	2	7	2	2	3	0%
<b>Total:</b>	<b>1,060</b>	<b>1,081</b>	<b>1,170</b>	<b>1,160</b>	<b>1,118</b>	<b>1,203</b>	<b>1,089</b>	<b>1,208</b>	<b>1,233</b>	<b>1,217</b>	<b>1,046</b>	<b>969</b>	<b>1,130</b>	<b>100%</b>
<b>Violations</b>														
Uncontrollable Non-Issued	4	0	1	3	2	2	3	1	1	0	1	0	2	36%
Controllable Non-Issued	0	0	0	0	0	1	0	0	0	3	1	0	2	30%
Citations	0	0	2	1	2	1	0	0	1	4	0	2	2	34%
<b>Total:</b>	<b>4</b>	<b>0</b>	<b>3</b>	<b>4</b>	<b>4</b>	<b>4</b>	<b>3</b>	<b>1</b>	<b>2</b>	<b>7</b>	<b>2</b>	<b>2</b>	<b>6</b>	<b>66%</b>
<b>Non-Violations</b>														
Emergency Vehicle Non-Issuable	1	0	0	0	0	0	0	0	1	0	1	0	1	0%
Emergency Vehicle PD	0	0	0	0	0	0	0	0	0	0	0	0	0	0%
Intersection Control in Progress-PD	0	0	0	0	0	0	0	0	0	0	0	0	0	0%
Gate Down/ No Train	0	0	0	0	0	0	0	0	0	0	0	0	0	0%
No Violation Occurred	925	955	1,040	1,027	980	1,065	956	1,074	1,098	847	748	659	948	74%
Rear Axle Activation	0	0	0	0	0	0	0	0	0	0	0	0	0	0%
Right Turn- No Violation	0	0	0	0	0	0	0	0	0	0	0	0	0	0%
Test Shot	130	126	127	129	134	134	130	133	132	121	119	131	129	10%
Train Activation	0	0	0	0	0	0	0	0	0	242	176	177	198	16%
Amber Time Low	0	0	0	0	0	0	0	0	0	0	0	0	0	0%
Vehicle Stopped- PD	0	0	0	0	0	0	0	0	0	0	0	0	0	0%
<b>Total:</b>	<b>1,056</b>	<b>1,081</b>	<b>1,167</b>	<b>1,156</b>	<b>1,114</b>	<b>1,199</b>	<b>1,086</b>	<b>1,207</b>	<b>1,231</b>	<b>1,210</b>	<b>1,044</b>	<b>967</b>	<b>1,276</b>	<b>100%</b>
<b>Uncontrollable Non-Issued Violations</b>														
Administrative Dismissal	0	0	0	0	0	0	0	0	0	0	0	0	0	0%
Address/CDL/DOB Match Fail	0	0	0	0	0	0	0	0	0	0	0	0	0	0%
Car Obstructed	0	0	0	0	0	0	0	0	0	0	0	0	0	0%
Conditions Beyond Control	0	0	0	0	0	0	0	0	0	0	0	0	0	0%
Driver Identity Unclear	2	0	0	1	0	0	0	0	0	0	1	0	1	20%
Driver Obstructed	0	0	0	0	0	0	0	0	0	0	0	0	0	0%
Exposed	0	0	0	0	0	0	0	0	0	0	0	0	0	0%
Emergency Vehicle Issue	1	0	0	0	0	0	0	0	0	0	0	0	1	15%
Glare on Plate	0	0	0	0	0	0	0	0	0	0	0	0	0	0%
Glare on Windshield	0	0	0	0	0	0	2	0	0	0	0	0	2	30%
Illegible Plate	0	0	0	0	0	0	0	0	0	0	0	0	0	0%
Interest of Justice- PD	0	0	0	0	0	0	0	0	0	0	0	0	0	0%
Image Quality- PD	0	0	1	0	0	0	0	0	0	0	0	0	1	15%
Issuance Criteria Not Met- PD	0	0	0	0	0	0	0	0	0	0	0	0	0	0%
No Warning Sign	0	0	0	0	0	0	0	0	0	0	0	0	0	0%
No Plate	1	0	0	2	2	2	1	1	1	0	0	0	1	21%
No Speed Captured	0	0	0	0	0	0	0	0	0	0	0	0	0	0%
Obstruction In Photo- PD	0	0	0	0	0	0	0	0	0	0	0	0	0	0%
Out of State	0	0	0	0	0	0	0	0	0	0	0	0	0	0%
Plate Obstructed	0	0	0	0	0	0	0	0	0	0	0	0	0	0%
Short Yellow- PD	0	0	0	0	0	0	0	0	0	0	0	0	0	0%
Third Party Damage	0	0	0	0	0	0	0	0	0	0	0	0	0	0%
TSB Epired	0	0	0	0	0	0	0	0	0	0	0	0	0	0%
TSB No Hit	0	0	0	0	0	0	0	0	0	0	0	0	0	0%
<b>Total:</b>	<b>4</b>	<b>0</b>	<b>1</b>	<b>3</b>	<b>2</b>	<b>2</b>	<b>3</b>	<b>1</b>	<b>1</b>	<b>0</b>	<b>1</b>	<b>0</b>	<b>7</b>	<b>100%</b>
<b>Controllable Non-Issued Violations</b>														
Conduent Expire	0	0	0	0	0	0	0	0	0	0	0	0	0	0%
Clarity of Plate	0	0	0	0	0	0	0	0	0	0	0	0	0	0%
Clarity of Driver	0	0	0	0	0	0	0	0	0	0	0	0	0	0%
Dark Interior	0	0	0	0	0	1	0	0	0	2	1	0	1	57%
Data Box Related- PD	0	0	0	0	0	0	0	0	0	0	0	0	0	0%
Data Box Data Error- PD	0	0	0	0	0	0	0	0	0	0	0	0	0	0%
Data Entry Error	0	0	0	0	0	0	0	0	0	0	0	0	0	0%
Exposed	0	0	0	0	0	0	0	0	0	0	0	0	0	0%
Equipment Malfunction	0	0	0	0	0	0	0	0	0	0	0	0	0	0%
Framing- PD	0	0	0	0	0	0	0	0	0	0	0	0	0	0%
Framing of Car	0	0	0	0	0	0	0	0	0	1	0	0	1	43%
Framing of Driver	0	0	0	0	0	0	0	0	0	0	0	0	0	0%
Operator Error	0	0	0	0	0	0	0	0	0	0	0	0	0	0%
Framing of Plate	0	0	0	0	0	0	0	0	0	0	0	0	0	0%
Reject Expired	0	0	0	0	0	0	0	0	0	0	0	0	0	0%
Speed Not Determined	0	0	0	0	0	0	0	0	0	0	0	0	0	0%
<b>Total:</b>	<b>0</b>	<b>0</b>	<b>0</b>	<b>0</b>	<b>0</b>	<b>1</b>	<b>0</b>	<b>0</b>	<b>0</b>	<b>3</b>	<b>1</b>	<b>0</b>	<b>2</b>	<b>100%</b>
<b>Summary Metrics</b>														
Daily Average Vehicle Passes	0	0	0	0	0	0	0	0	0	0	0	0	0	0
Average Issued Speed	28	22	17	20	20	0	0	0	18	24	25	26	22	
Average Issued Red Seconds	200.0	61.0	520.2	61.8	89.6	0.0	0.0	0.0	67.3	19.9	21.5	0.5	115.8	
Citation / Violation Issuance Rate	0%	0%	67%	25%	50%	25%	0%	0%	50%	57%	0%	100%	53%	
Controllable Issuance Rate	0%	0%	100%	100%	100%	50%	0%	0%	100%	57%	0%	100%	87%	



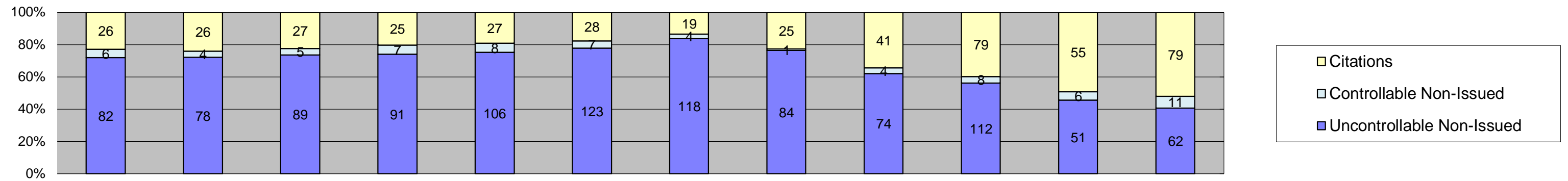
Los Angeles County MTA Expo Line  
 Approach Summary Report  
 Location 5038: SB to EB Flower @ Adams



Events	Jan-18	Feb-18	Mar-18	Apr-18	May-18	Jun-18	Jul-18	Aug-18	Sep-18	Oct-18	Nov-18	Dec-18	Year to Date Monthly Average	
													Quantity	%
Non-Violations	599	614	592	509	543	487	448	481	534	603	568	476	538	98%
Violations	8	5	14	5	16	11	11	21	4	15	10	10	11	2%
<b>Total:</b>	<b>607</b>	<b>619</b>	<b>606</b>	<b>514</b>	<b>559</b>	<b>498</b>	<b>459</b>	<b>502</b>	<b>538</b>	<b>618</b>	<b>578</b>	<b>486</b>	<b>549</b>	<b>100%</b>
<b>Violations</b>														
Uncontrollable Non-Issued	6	4	7	4	10	9	9	14	2	11	8	7	8	64%
Controllable Non-Issued	1	0	3	1	5	2	2	6	2	4	2	1	3	22%
Citations	1	1	4	0	1	0	0	1	0	0	0	2	2	14%
<b>Total:</b>	<b>8</b>	<b>5</b>	<b>14</b>	<b>5</b>	<b>16</b>	<b>11</b>	<b>11</b>	<b>21</b>	<b>4</b>	<b>15</b>	<b>10</b>	<b>10</b>	<b>12</b>	<b>86%</b>
<b>Non-Violations</b>														
Emergency Vehicle Non-Issuable	1	3	1	1	0	2	1	0	2	0	0	1	2	0%
Emergency Vehicle PD	0	0	0	0	0	0	0	0	0	0	0	0	0	0%
Intersection Control in Progress- PD	0	0	0	0	0	0	0	0	0	0	0	0	0	0%
Gate Down/ No Train	0	0	0	0	0	0	0	0	0	0	0	0	0	0%
No Violation Occurred	581	592	569	474	528	468	425	462	518	550	529	423	510	90%
Rear Axle Activation	6	7	5	11	2	1	2	5	7	6	2	7	5	1%
Right Turn- No Violation	0	0	0	0	0	0	0	0	0	0	0	0	0	0%
Test Shot	10	12	17	23	13	16	20	14	7	14	5	10	13	2%
Train Activation	0	0	0	0	0	0	0	0	0	33	32	35	33	6%
Amber Time Low	1	0	0	0	0	0	0	0	0	0	0	0	1	0%
Vehicle Stopped- PD	0	0	0	0	0	0	0	0	0	0	0	0	0	0%
<b>Total:</b>	<b>599</b>	<b>614</b>	<b>592</b>	<b>509</b>	<b>543</b>	<b>487</b>	<b>448</b>	<b>481</b>	<b>534</b>	<b>603</b>	<b>568</b>	<b>476</b>	<b>564</b>	<b>100%</b>
<b>Uncontrollable Non-Issued Violations</b>														
Administrative Dismissal	0	0	0	0	0	0	0	0	0	0	0	0	0	0%
Address/CDL/DOB Match Fail	0	0	0	0	0	0	0	0	0	0	0	0	0	0%
Car Obstructed	0	0	0	0	0	6	0	0	0	0	0	0	6	27%
Conditions Beyond Control	0	0	0	0	0	0	0	0	0	0	0	0	0	0%
Driver Identity Unclear	0	0	1	0	0	0	0	0	0	0	0	0	1	4%
Driver Obstructed	5	3	4	2	5	0	5	10	1	5	7	4	5	21%
Exposed	0	0	0	0	0	0	0	0	0	0	0	0	0	0%
Emergency Vehicle Issue	0	0	0	0	1	0	0	0	0	0	0	0	1	4%
Glare on Plate	0	0	0	0	0	0	1	0	0	0	0	0	1	4%
Glare on Windshield	1	0	0	0	1	0	1	1	1	0	1	1	1	4%
Illegible Plate	0	0	0	0	0	0	0	0	0	0	0	0	0	0%
Interest of Justice- PD	0	0	0	0	0	0	0	0	0	0	0	0	0	0%
Image Quality- PD	0	0	0	0	0	0	0	0	0	0	0	0	0	0%
Issuance Criteria Not Met- PD	0	0	0	0	0	0	0	0	0	3	0	0	3	13%
No Warning Sign	0	0	0	0	0	0	0	0	0	0	0	0	0	0%
No Plate	0	1	0	2	1	3	2	2	0	1	0	1	2	7%
No Speed Captured	0	0	0	0	0	0	0	0	0	0	0	0	0	0%
Obstruction In Photo- PD	0	0	1	0	0	0	0	0	0	1	0	0	1	4%
Out of State	0	0	1	0	2	0	0	1	0	1	0	0	1	6%
Plate Obstructed	0	0	0	0	0	0	0	0	0	0	0	0	0	0%
Short Yellow- PD	0	0	0	0	0	0	0	0	0	0	0	0	0	0%
Third Party Damage	0	0	0	0	0	0	0	0	0	0	0	0	0	0%
TSB Epired	0	0	0	0	0	0	0	0	0	0	0	0	0	0%
TSB No Hit	0	0	0	0	0	0	0	0	0	0	0	1	1	4%
<b>Total:</b>	<b>6</b>	<b>4</b>	<b>7</b>	<b>4</b>	<b>10</b>	<b>9</b>	<b>9</b>	<b>14</b>	<b>2</b>	<b>11</b>	<b>8</b>	<b>7</b>	<b>23</b>	<b>100%</b>
<b>Controllable Non-Issued Violations</b>														
Conduent Expire	0	0	0	0	0	0	0	0	0	0	0	0	0	0%
Clarity of Plate	0	0	0	0	0	0	0	0	0	0	0	0	0	0%
Clarity of Driver	0	0	0	0	0	0	0	0	0	0	0	0	0	0%
Dark Interior	1	0	3	0	5	2	1	3	2	4	1	1	2	61%
Data Box Related- PD	0	0	0	0	0	0	0	0	0	0	0	0	0	0%
Data Box Data Error- PD	0	0	0	0	0	0	0	0	0	0	0	0	0	0%
Data Entry Error	0	0	0	1	0	0	1	3	0	0	1	0	2	39%
Exposed	0	0	0	0	0	0	0	0	0	0	0	0	0	0%
Equipment Malfunction	0	0	0	0	0	0	0	0	0	0	0	0	0	0%
Framing- PD	0	0	0	0	0	0	0	0	0	0	0	0	0	0%
Framing of Car	0	0	0	0	0	0	0	0	0	0	0	0	0	0%
Framing of Driver	0	0	0	0	0	0	0	0	0	0	0	0	0	0%
Operator Error	0	0	0	0	0	0	0	0	0	0	0	0	0	0%
Framing of Plate	0	0	0	0	0	0	0	0	0	0	0	0	0	0%
Reject Expired	0	0	0	0	0	0	0	0	0	0	0	0	0	0%
Speed Not Determined	0	0	0	0	0	0	0	0	0	0	0	0	0	0%
<b>Total:</b>	<b>1</b>	<b>0</b>	<b>3</b>	<b>1</b>	<b>5</b>	<b>2</b>	<b>2</b>	<b>6</b>	<b>2</b>	<b>4</b>	<b>2</b>	<b>1</b>	<b>4</b>	<b>100%</b>
<b>Summary Metrics</b>														
Daily Average Vehicle Passes	0	0	0	0	0	0	0	0	0	0	0	0	0	0
Average Issued Speed	17	15	16	17	18	24	16	16	0	33	18	36	21	
Average Issued Red Seconds	217.2	107.3	162.0	207.7	337.2	164.2	249.0	0.1	0.0	271.1	620.8	114.1	222.8	
Citation / Violation Issuance Rate	13%	20%	29%	0%	6%	0%	0%	5%	0%	0%	0%	20%	15%	
Controllable Issuance Rate	50%	100%	57%	0%	17%	0%	0%	14%	0%	0%	0%	67%	51%	



Los Angeles County MTA Expo Line  
 Approach Summary Report  
 Location 5048: SB to EB Flower at 28th

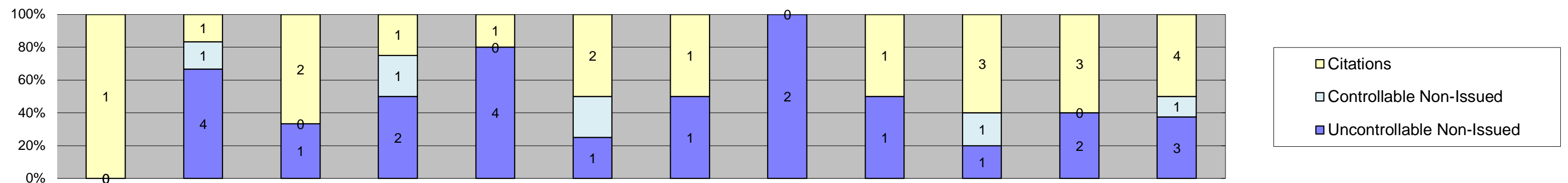


Events	Jan-18	Feb-18	Mar-18	Apr-18	May-18	Jun-18	Jul-18	Aug-18	Sep-18	Oct-18	Nov-18	Dec-18	Year to Date Monthly Average	
													Quantity	%
Non-Violations	158	156	151	166	154	163	151	189	163	146	115	151	155	54%
Violations	114	108	121	123	141	158	141	110	119	199	112	152	133	46%
<b>Total:</b>	<b>272</b>	<b>264</b>	<b>272</b>	<b>289</b>	<b>295</b>	<b>321</b>	<b>292</b>	<b>299</b>	<b>282</b>	<b>345</b>	<b>227</b>	<b>303</b>	<b>288</b>	<b>100%</b>
<b>Violations</b>														
Uncontrollable Non-Issued	82	78	89	91	106	123	118	84	74	112	51	62	89	67%
Controllable Non-Issued	6	4	5	7	8	7	4	1	4	8	6	11	6	4%
Citations	26	26	27	25	27	28	19	25	41	79	55	79	38	29%
<b>Total:</b>	<b>114</b>	<b>108</b>	<b>121</b>	<b>123</b>	<b>141</b>	<b>158</b>	<b>141</b>	<b>110</b>	<b>119</b>	<b>199</b>	<b>112</b>	<b>152</b>	<b>133</b>	<b>71%</b>
<b>Non-Violations</b>														
Emergency Vehicle Non-Issuable	0	2	0	2	1	0	0	1	0	0	0	0	2	1%
Emergency Vehicle PD	0	0	0	0	1	2	0	0	0	0	0	1	1	1%
Intersection Control in Progress-PD	0	1	0	1	0	1	0	0	0	0	0	0	1	1%
Gate Down/ No Train	0	0	0	0	0	0	0	0	0	0	0	0	0	0%
No Violation Occurred	17	18	17	21	21	18	15	41	31	13	10	8	19	12%
Rear Axle Activation	9	4	6	7	11	13	5	12	4	6	4	9	8	5%
Right Turn- No Violation	0	0	0	0	0	0	0	0	0	0	0	0	0	0%
Test Shot	132	131	128	134	120	129	131	135	127	124	100	131	127	79%
Train Activation	0	0	0	0	0	0	0	0	1	3	1	1	2	1%
Amber Time Low	0	0	0	0	0	0	0	0	0	0	0	0	0	0%
Vehicle Stopped- PD	0	0	0	1	0	0	0	0	0	0	0	1	1	1%
<b>Total:</b>	<b>158</b>	<b>156</b>	<b>151</b>	<b>166</b>	<b>154</b>	<b>163</b>	<b>151</b>	<b>189</b>	<b>163</b>	<b>146</b>	<b>115</b>	<b>151</b>	<b>160</b>	<b>100%</b>
<b>Uncontrollable Non-Issued Violations</b>														
Administrative Dismissal	0	0	0	0	0	0	0	0	0	0	0	0	0	0%
Address/CDL/DOB Match Fail	0	0	0	0	1	0	0	0	0	0	0	0	1	1%
Car Obstructed	0	0	0	1	0	0	0	0	0	1	1	0	1	1%
Conditions Beyond Control	0	0	0	0	0	0	0	0	0	0	0	0	0	0%
Driver Identity Unclear	20	15	11	14	5	9	10	3	2	2	0	1	8	8%
Driver Obstructed	9	10	17	18	12	22	12	16	16	25	14	20	16	16%
Exposed	0	0	0	0	0	0	0	0	0	0	0	0	0	0%
Emergency Vehicle Issue	0	0	0	0	0	1	0	0	0	0	0	0	1	1%
Glare on Plate	2	6	1	7	1	1	0	2	11	17	5	2	5	5%
Glare on Windshield	1	3	14	18	13	46	48	26	3	2	0	0	17	17%
Illegible Plate	0	0	0	0	0	0	0	0	0	0	0	0	0	0%
Interest of Justice- PD	0	0	0	0	0	0	0	0	0	0	0	0	0	0%
Image Quality- PD	2	6	6	6	11	5	8	8	0	0	1	1	5	5%
Issuance Criteria Not Met- PD	0	0	0	0	0	0	0	0	0	2	0	0	2	2%
No Warning Sign	0	0	0	0	0	0	0	0	0	0	0	0	0	0%
No Plate	29	24	28	21	38	26	28	22	34	47	21	25	29	28%
No Speed Captured	0	0	0	0	0	0	0	0	0	0	0	0	0	0%
Obstruction In Photo- PD	13	10	6	3	17	9	11	5	6	10	6	1	8	8%
Out of State	1	2	0	1	3	2	1	2	1	4	1	2	2	2%
Plate Obstructed	5	2	3	2	5	2	0	0	1	2	1	1	2	2%
Short Yellow- PD	0	0	0	0	0	0	0	0	0	0	0	0	0	0%
Third Party Damage	0	0	0	0	0	0	0	0	0	0	0	0	0	0%
TSB Epired	0	0	0	0	0	0	0	0	0	0	0	0	0	0%
TSB No Hit	0	0	3	0	0	0	0	0	0	0	1	9	4	4%
<b>Total:</b>	<b>82</b>	<b>78</b>	<b>89</b>	<b>91</b>	<b>106</b>	<b>123</b>	<b>118</b>	<b>84</b>	<b>74</b>	<b>112</b>	<b>51</b>	<b>62</b>	<b>102</b>	<b>100%</b>
<b>Controllable Non-Issued Violations</b>														
Conduent Expire	0	0	0	0	0	0	0	0	0	0	0	0	0	0%
Clarity of Plate	0	0	0	0	0	0	0	0	0	0	0	0	0	0%
Clarity of Driver	0	0	0	0	0	0	0	0	0	0	0	0	0	0%
Dark Interior	3	3	4	6	6	5	2	0	4	5	5	11	5	49%
Data Box Related- PD	0	0	0	0	0	0	0	0	0	0	0	0	0	0%
Data Box Data Error- PD	0	0	0	0	0	0	0	0	0	0	0	0	0	0%
Data Entry Error	1	0	1	1	0	1	1	1	0	1	1	0	1	10%
Exposed	0	0	0	0	0	0	0	0	0	0	0	0	0	0%
Equipment Malfunction	2	0	0	0	0	0	1	0	0	2	0	0	2	17%
Framing- PD	0	0	0	0	0	0	0	0	0	0	0	0	0	0%
Framing of Car	0	1	0	0	0	0	0	0	0	0	0	0	1	10%
Framing of Driver	0	0	0	0	0	0	0	0	0	0	0	0	0	0%
Operator Error	0	0	0	0	0	0	0	0	0	0	0	0	0	0%
Framing of Plate	0	0	0	0	0	0	0	0	0	0	0	0	0	0%
Reject Expired	0	0	0	0	0	0	0	0	0	0	0	0	0	0%
Speed Not Determined	0	0	0	0	2	1	0	0	0	0	0	0	2	15%
<b>Total:</b>	<b>6</b>	<b>4</b>	<b>5</b>	<b>7</b>	<b>8</b>	<b>7</b>	<b>4</b>	<b>1</b>	<b>4</b>	<b>8</b>	<b>6</b>	<b>11</b>	<b>10</b>	<b>100%</b>
<b>Summary Metrics</b>														
Daily Average Vehicle Passes	0	0	0	0	0	0	0	0	0	0	0	0	0	0
Average Issued Speed	27	27	28	27	27	28	28	26	27	27	27	29	27	27
Average Issued Red Seconds	0.4	0.5	0.5	0.4	0.9	0.5	2.9	0.5	0.6	0.5	0.5	0.5	0.7	0.7
Citation / Violation Issuance Rate	23%	24%	22%	20%	19%	18%	13%	23%	34%	40%	49%	52%	28%	28%
Controllable Issuance Rate	81%	87%	84%	78%	77%	80%	83%	96%	91%	91%	90%	88%	86%	86%





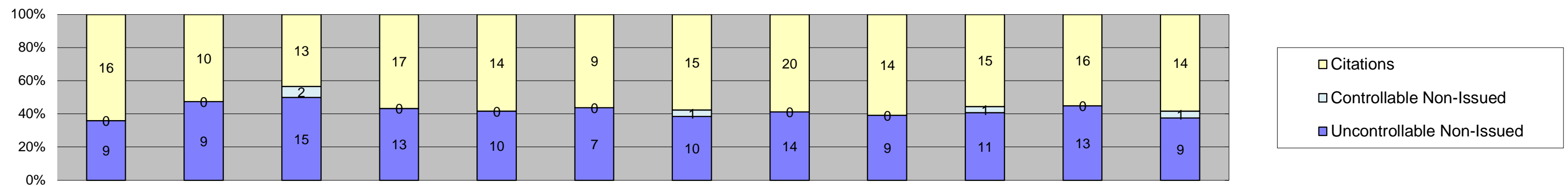
Los Angeles County MTA Expo Line  
 Approach Summary Report  
 Location 5058: SB to EB Flower @ 30th



Events	Jan-18	Feb-18	Mar-18	Apr-18	May-18	Jun-18	Jul-18	Aug-18	Sep-18	Oct-18	Nov-18	Dec-18	Year to Date Monthly Average	
													Quantity	%
Non-Violations	952	915	1,075	963	977	871	902	1,071	939	1,127	998	894	974	100%
Violations	1	6	3	4	5	4	2	2	2	5	5	8	4	0%
<b>Total:</b>	<b>953</b>	<b>921</b>	<b>1,078</b>	<b>967</b>	<b>982</b>	<b>875</b>	<b>904</b>	<b>1,073</b>	<b>941</b>	<b>1,132</b>	<b>1,003</b>	<b>902</b>	<b>978</b>	<b>100%</b>
<b>Violations</b>														
Uncontrollable Non-Issued	0	4	1	2	4	1	1	2	1	1	2	3	2	42%
Controllable Non-Issued	0	1	0	1	0	1	0	0	0	1	0	1	1	21%
Citations	1	1	2	1	1	2	1	0	1	3	3	4	2	38%
<b>Total:</b>	<b>1</b>	<b>6</b>	<b>3</b>	<b>4</b>	<b>5</b>	<b>4</b>	<b>2</b>	<b>2</b>	<b>2</b>	<b>5</b>	<b>5</b>	<b>8</b>	<b>5</b>	<b>62%</b>
<b>Non-Violations</b>														
Emergency Vehicle Non-Issuable	0	0	0	0	0	0	0	0	0	0	1	0	1	0%
Emergency Vehicle PD	0	0	0	0	0	0	0	0	0	0	0	0	0	0%
Intersection Control in Progress-PD	0	0	0	0	0	0	0	0	0	0	0	0	0	0%
Gate Down/ No Train	0	0	0	0	0	0	0	0	0	0	0	0	0	0%
No Violation Occurred	804	764	913	818	818	726	756	910	791	467	417	336	710	54%
Rear Axle Activation	2	2	1	0	1	1	0	3	0	2	0	1	2	0%
Right Turn- No Violation	0	0	0	0	0	0	0	0	0	0	0	0	0	0%
Test Shot	146	149	161	145	158	144	146	158	148	172	134	152	151	12%
Train Activation	0	0	0	0	0	0	0	0	0	486	446	405	446	34%
Amber Time Low	0	0	0	0	0	0	0	0	0	0	0	0	0	0%
Vehicle Stopped- PD	0	0	0	0	0	0	0	0	0	0	0	0	0	0%
<b>Total:</b>	<b>952</b>	<b>915</b>	<b>1,075</b>	<b>963</b>	<b>977</b>	<b>871</b>	<b>902</b>	<b>1,071</b>	<b>939</b>	<b>1,127</b>	<b>998</b>	<b>894</b>	<b>1,309</b>	<b>100%</b>
<b>Uncontrollable Non-Issued Violations</b>														
Administrative Dismissal	0	0	0	0	0	0	0	0	0	0	0	0	0	0%
Address/CDL/DOB Match Fail	0	0	0	0	0	0	0	0	0	0	0	0	0	0%
Car Obstructed	0	0	0	0	0	0	0	0	0	0	0	0	0	0%
Conditions Beyond Control	0	0	0	0	0	0	0	0	0	0	0	0	0	0%
Driver Identity Unclear	0	0	0	0	0	0	0	0	0	0	0	0	0	0%
Driver Obstructed	0	0	0	0	0	0	0	0	0	0	0	0	0	0%
Exposed	0	0	0	0	0	0	0	0	0	0	0	0	0	0%
Emergency Vehicle Issue	0	0	0	0	0	0	0	0	0	0	0	0	0	0%
Glare on Plate	0	0	0	0	0	1	0	0	0	0	1	2	1	22%
Glare on Windshield	0	0	0	0	0	0	0	0	0	0	0	0	0	0%
Illegible Plate	0	0	0	0	0	0	0	0	0	0	0	0	0	0%
Interest of Justice- PD	0	0	0	0	0	0	0	0	0	0	0	0	0	0%
Image Quality- PD	0	0	0	0	0	0	0	0	0	0	0	0	0	0%
Issuance Criteria Not Met- PD	0	0	0	0	0	0	0	0	0	0	0	0	0	0%
No Warning Sign	0	0	0	0	0	0	0	0	0	0	0	0	0	0%
No Plate	0	3	1	1	4	0	0	1	1	1	1	0	2	27%
No Speed Captured	0	0	0	0	0	0	0	0	0	0	0	0	0	0%
Obstruction In Photo- PD	0	0	0	0	0	0	0	1	0	0	0	0	1	17%
Out of State	0	1	0	1	0	0	1	0	0	0	0	0	1	17%
Plate Obstructed	0	0	0	0	0	0	0	0	0	0	0	0	0	0%
Short Yellow- PD	0	0	0	0	0	0	0	0	0	0	0	0	0	0%
Third Party Damage	0	0	0	0	0	0	0	0	0	0	0	0	0	0%
TSB Epired	0	0	0	0	0	0	0	0	0	0	0	0	0	0%
TSB No Hit	0	0	0	0	0	0	0	0	0	0	0	1	1	17%
<b>Total:</b>	<b>0</b>	<b>4</b>	<b>1</b>	<b>2</b>	<b>4</b>	<b>1</b>	<b>1</b>	<b>2</b>	<b>1</b>	<b>1</b>	<b>2</b>	<b>3</b>	<b>6</b>	<b>100%</b>
<b>Controllable Non-Issued Violations</b>														
Conduent Expire	0	0	0	0	0	0	0	0	0	0	0	0	0	0%
Clarity of Plate	0	0	0	0	0	0	0	0	0	0	0	0	0	0%
Clarity of Driver	0	0	0	0	0	0	0	0	0	0	0	0	0	0%
Dark Interior	0	1	0	0	0	0	0	0	0	0	0	0	1	25%
Data Box Related- PD	0	0	0	0	0	0	0	0	0	0	0	0	0	0%
Data Box Data Error- PD	0	0	0	0	0	0	0	0	0	0	0	0	0	0%
Data Entry Error	0	0	0	0	0	0	0	0	0	0	0	0	0	0%
Exposed	0	0	0	0	0	0	0	0	0	0	0	0	0	0%
Equipment Malfunction	0	0	0	0	0	0	0	0	0	1	0	0	1	25%
Framing- PD	0	0	0	0	0	0	0	0	0	0	0	0	0	0%
Framing of Car	0	0	0	1	0	0	0	0	0	0	0	1	1	25%
Framing of Driver	0	0	0	0	0	0	0	0	0	0	0	0	0	0%
Operator Error	0	0	0	0	0	0	0	0	0	0	0	0	0	0%
Framing of Plate	0	0	0	0	0	0	0	0	0	0	0	0	0	0%
Reject Expired	0	0	0	0	0	0	0	0	0	0	0	0	0	0%
Speed Not Determined	0	0	0	0	0	1	0	0	0	0	0	0	1	25%
<b>Total:</b>	<b>0</b>	<b>1</b>	<b>0</b>	<b>1</b>	<b>0</b>	<b>1</b>	<b>0</b>	<b>0</b>	<b>0</b>	<b>1</b>	<b>0</b>	<b>1</b>	<b>4</b>	<b>100%</b>
<b>Summary Metrics</b>														
Daily Average Vehicle Passes	0	0	0	0	0	0	0	0	0	0	0	0	0	0
Average Issued Speed	16	16	17	22	18	18	23	16	14	17	23	17	18	
Average Issued Red Seconds	46.0	54.5	39.6	97.3	28.0	250.5	419.2	46.7	95.2	40.7	19.4	34.4	97.6	
Citation / Violation Issuance Rate	100%	17%	67%	25%	20%	50%	50%	0%	50%	60%	60%	50%	50%	
Controllable Issuance Rate	100%	50%	100%	50%	100%	67%	100%	0%	100%	75%	100%	80%	84%	



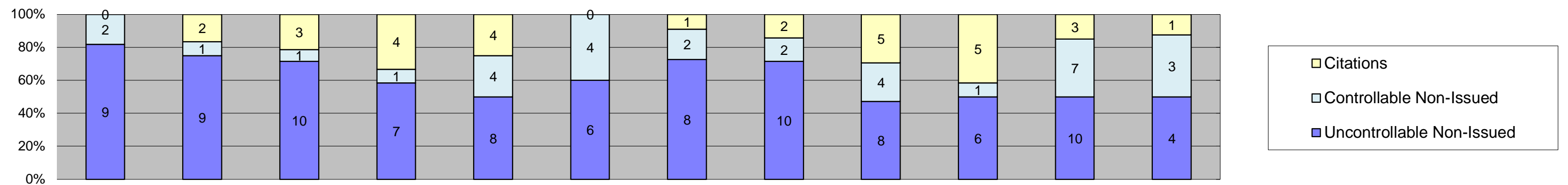
Los Angeles County MTA Expo Line  
 Approach Summary Report  
 Location 5068: SB to EB Flower @ Jefferson



Events	Jan-18	Feb-18	Mar-18	Apr-18	May-18	Jun-18	Jul-18	Aug-18	Sep-18	Oct-18	Nov-18	Dec-18	Year to Date Monthly Average	
													Quantity	%
Non-Violations	1,151	1,124	1,171	1,086	1,161	1,014	951	933	909	996	1,056	1,192	1,062	98%
Violations	25	19	30	30	24	16	26	34	23	27	29	24	26	2%
<b>Total:</b>	<b>1,176</b>	<b>1,143</b>	<b>1,201</b>	<b>1,116</b>	<b>1,185</b>	<b>1,030</b>	<b>977</b>	<b>967</b>	<b>932</b>	<b>1,023</b>	<b>1,085</b>	<b>1,216</b>	<b>1,088</b>	<b>100%</b>
<b>Violations</b>														
Uncontrollable Non-Issued	9	9	15	13	10	7	10	14	9	11	13	9	11	41%
Controllable Non-Issued	0	0	2	0	0	0	1	0	0	1	0	1	1	5%
Citations	16	10	13	17	14	9	15	20	14	15	16	14	14	55%
<b>Total:</b>	<b>25</b>	<b>19</b>	<b>30</b>	<b>30</b>	<b>24</b>	<b>16</b>	<b>26</b>	<b>34</b>	<b>23</b>	<b>27</b>	<b>29</b>	<b>24</b>	<b>26</b>	<b>45%</b>
<b>Non-Violations</b>														
Emergency Vehicle Non-Issuable	1	0	0	0	0	0	0	0	1	0	2	0	1	0%
Emergency Vehicle PD	0	0	0	0	0	0	0	0	0	0	0	0	0	0%
Intersection Control in Progress-PD	0	0	0	0	0	0	0	0	0	1	0	0	1	0%
Gate Down/ No Train	0	0	0	0	0	0	0	0	0	0	0	0	0	0%
No Violation Occurred	987	971	1,001	931	997	861	798	783	780	638	688	853	857	71%
Rear Axle Activation	2	1	3	3	0	0	2	4	3	5	3	2	3	0%
Right Turn- No Violation	0	0	0	0	0	0	0	0	0	0	0	0	0	0%
Test Shot	161	152	167	152	164	153	151	146	125	158	161	158	154	13%
Train Activation	0	0	0	0	0	0	0	0	0	194	202	179	192	16%
Amber Time Low	0	0	0	0	0	0	0	0	0	0	0	0	0	0%
Vehicle Stopped- PD	0	0	0	0	0	0	0	0	0	0	0	0	0	0%
<b>Total:</b>	<b>1,151</b>	<b>1,124</b>	<b>1,171</b>	<b>1,086</b>	<b>1,161</b>	<b>1,014</b>	<b>951</b>	<b>933</b>	<b>909</b>	<b>996</b>	<b>1,056</b>	<b>1,192</b>	<b>1,208</b>	<b>100%</b>
<b>Uncontrollable Non-Issued Violations</b>														
Administrative Dismissal	0	0	0	0	0	0	0	0	0	0	0	0	0	0%
Address/CDL/DOB Match Fail	0	0	0	0	0	0	0	0	0	0	0	0	0	0%
Car Obstructed	0	0	0	1	0	0	0	0	0	1	0	1	1	4%
Conditions Beyond Control	0	0	0	0	0	0	0	0	0	0	0	0	0	0%
Driver Identity Unclear	1	1	0	0	0	0	1	0	0	0	0	0	1	4%
Driver Obstructed	0	0	1	1	1	0	2	4	0	0	4	0	2	9%
Exposed	0	0	0	0	0	0	0	0	0	0	0	0	0	0%
Emergency Vehicle Issue	0	0	0	0	0	0	0	1	0	0	0	0	1	4%
Glare on Plate	0	1	2	2	1	1	2	0	0	0	1	0	1	6%
Glare on Windshield	0	0	0	0	0	1	0	2	0	1	0	0	1	6%
Illegible Plate	0	0	0	0	0	0	0	0	0	0	0	0	0	0%
Interest of Justice- PD	0	0	0	0	1	0	0	0	0	0	0	0	1	4%
Image Quality- PD	0	0	1	0	0	0	0	0	0	0	0	0	1	4%
Issuance Criteria Not Met- PD	0	0	0	0	0	0	0	0	0	2	0	0	2	8%
No Warning Sign	0	0	0	0	0	0	0	0	0	0	0	0	0	0%
No Plate	4	6	6	7	4	3	4	4	9	5	7	5	5	22%
No Speed Captured	0	0	0	0	0	0	0	0	0	0	0	0	0	0%
Obstruction In Photo- PD	1	0	1	0	2	1	0	1	0	0	0	0	1	5%
Out of State	1	1	1	2	1	1	1	1	0	0	1	1	1	5%
Plate Obstructed	2	0	0	0	0	0	0	1	0	2	0	0	2	7%
Short Yellow- PD	0	0	0	0	0	0	0	0	0	0	0	0	0	0%
Third Party Damage	0	0	0	0	0	0	0	0	0	0	0	0	0	0%
TSB Epired	0	0	0	0	0	0	0	0	0	0	0	0	0	0%
TSB No Hit	0	0	3	0	0	0	0	0	0	0	0	2	3	11%
<b>Total:</b>	<b>9</b>	<b>9</b>	<b>15</b>	<b>13</b>	<b>10</b>	<b>7</b>	<b>10</b>	<b>14</b>	<b>9</b>	<b>11</b>	<b>13</b>	<b>9</b>	<b>24</b>	<b>100%</b>
<b>Controllable Non-Issued Violations</b>														
Conduent Expire	0	0	0	0	0	0	0	0	0	0	0	0	0	0%
Clarity of Plate	0	0	0	0	0	0	0	0	0	0	0	0	0	0%
Clarity of Driver	0	0	0	0	0	0	0	0	0	0	0	0	0	0%
Dark Interior	0	0	0	0	0	0	0	0	0	0	0	0	0	0%
Data Box Related- PD	0	0	0	0	0	0	0	0	0	0	0	0	0	0%
Data Box Data Error- PD	0	0	0	0	0	0	0	0	0	0	0	0	0	0%
Data Entry Error	0	0	2	0	0	0	1	0	0	1	0	0	1	57%
Exposed	0	0	0	0	0	0	0	0	0	0	0	0	0	0%
Equipment Malfunction	0	0	0	0	0	0	0	0	0	0	0	0	0	0%
Framing- PD	0	0	0	0	0	0	0	0	0	0	0	0	0	0%
Framing of Car	0	0	0	0	0	0	0	0	0	0	0	1	1	43%
Framing of Driver	0	0	0	0	0	0	0	0	0	0	0	0	0	0%
Operator Error	0	0	0	0	0	0	0	0	0	0	0	0	0	0%
Framing of Plate	0	0	0	0	0	0	0	0	0	0	0	0	0	0%
Reject Expired	0	0	0	0	0	0	0	0	0	0	0	0	0	0%
Speed Not Determined	0	0	0	0	0	0	0	0	0	0	0	0	0	0%
<b>Total:</b>	<b>0</b>	<b>0</b>	<b>2</b>	<b>0</b>	<b>0</b>	<b>0</b>	<b>1</b>	<b>0</b>	<b>0</b>	<b>1</b>	<b>0</b>	<b>1</b>	<b>2</b>	<b>100%</b>
<b>Summary Metrics</b>														
Daily Average Vehicle Passes	0	0	0	0	0	0	0	0	0	0	0	0	0	0
Average Issued Speed	19	19	19	18	20	19	17	18	18	19	18	18	19	19
Average Issued Red Seconds	0.4	8.1	0.5	3.2	28.0	0.6	0.5	31.9	55.8	23.6	21.6	26.0	16.7	16.7
Citation / Violation Issuance Rate	64%	53%	43%	57%	58%	56%	58%	59%	61%	56%	55%	58%	56%	56%
Controllable Issuance Rate	100%	100%	87%	100%	100%	100%	94%	100%	100%	94%	100%	93%	97%	97%



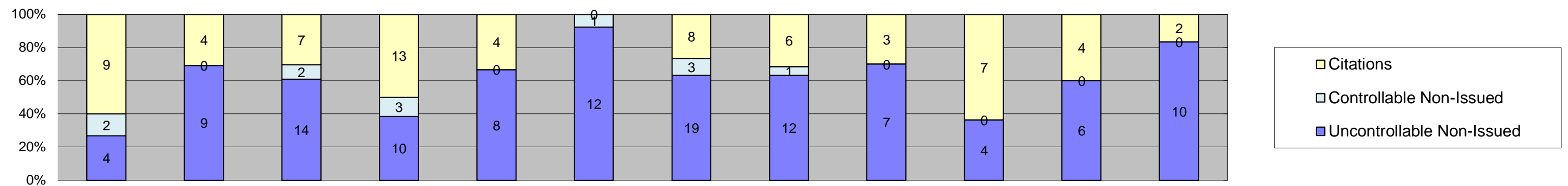
Los Angeles County MTA Expo Line  
Approach Summary Report  
Location 5077: EB to NB Exposition @ Watt



Events	Jan-18	Feb-18	Mar-18	Apr-18	May-18	Jun-18	Jul-18	Aug-18	Sep-18	Oct-18	Nov-18	Dec-18	Year to Date	
													Monthly Average Quantity	Monthly Average %
Non-Violations	219	257	327	261	252	211	217	226	206	252	221	183	236	95%
Violations	11	12	14	12	16	10	11	14	17	12	20	8	13	5%
<b>Total:</b>	<b>230</b>	<b>269</b>	<b>341</b>	<b>273</b>	<b>268</b>	<b>221</b>	<b>228</b>	<b>240</b>	<b>223</b>	<b>264</b>	<b>241</b>	<b>191</b>	<b>249</b>	<b>100%</b>
<b>Violations</b>														
Uncontrollable Non-Issued	9	9	10	7	8	6	8	10	8	6	10	4	8	58%
Controllable Non-Issued	2	1	1	1	4	4	2	2	4	1	7	3	3	20%
Citations	0	2	3	4	4	0	1	2	5	5	3	1	3	22%
<b>Total:</b>	<b>11</b>	<b>12</b>	<b>14</b>	<b>12</b>	<b>16</b>	<b>10</b>	<b>11</b>	<b>14</b>	<b>17</b>	<b>12</b>	<b>20</b>	<b>8</b>	<b>14</b>	<b>78%</b>
<b>Non-Violations</b>														
Emergency Vehicle Non-Issuable	1	1	2	2	3	1	3	2	4	2	0	0	2	1%
Emergency Vehicle PD	0	0	0	0	0	0	0	0	0	0	0	0	0	0%
Intersection Control in Progress- PD	0	0	0	0	0	0	0	0	0	0	0	0	0	0%
Gate Down/ No Train	0	0	0	0	0	0	0	0	0	0	0	0	0	0%
No Violation Occurred	98	127	125	127	112	90	97	105	96	87	62	50	98	37%
Rear Axle Activation	0	0	1	1	1	0	1	0	1	0	0	0	1	0%
Right Turn- No Violation	0	0	0	0	0	0	0	0	0	0	0	0	0	0%
Test Shot	120	129	199	131	136	120	116	119	105	122	121	101	127	48%
Train Activation	0	0	0	0	0	0	0	0	0	41	38	32	37	14%
Amber Time Low	0	0	0	0	0	0	0	0	0	0	0	0	0	0%
Vehicle Stopped- PD	0	0	0	0	0	0	0	0	0	0	0	0	0	0%
<b>Total:</b>	<b>219</b>	<b>257</b>	<b>327</b>	<b>261</b>	<b>252</b>	<b>211</b>	<b>217</b>	<b>226</b>	<b>206</b>	<b>252</b>	<b>221</b>	<b>183</b>	<b>265</b>	<b>100%</b>
<b>Uncontrollable Non-Issued Violations</b>														
Administrative Dismissal	0	0	0	0	0	0	0	0	0	0	0	0	0	0%
Address/CDL/DOB Match Fail	0	0	0	0	0	0	0	0	0	0	0	0	0	0%
Car Obstructed	0	0	0	0	0	0	0	1	0	1	0	0	1	6%
Conditions Beyond Control	0	0	0	0	0	0	0	0	0	0	0	0	0	0%
Driver Identity Unclear	0	1	1	0	0	0	0	0	0	1	0	0	1	6%
Driver Obstructed	1	0	0	2	0	2	1	2	1	0	0	1	1	9%
Exposed	0	0	0	0	0	0	0	0	0	0	0	0	0	0%
Emergency Vehicle Issue	0	0	0	0	1	0	0	0	0	0	1	0	1	6%
Glare on Plate	2	6	5	3	4	3	1	4	4	0	3	1	3	20%
Glare on Windshield	0	1	0	0	0	0	2	1	1	0	1	0	1	7%
Illegible Plate	1	0	0	0	0	0	0	0	0	0	0	0	1	6%
Interest of Justice- PD	0	0	0	0	0	0	0	0	0	0	0	0	0	0%
Image Quality- PD	1	1	0	0	0	0	0	0	0	0	0	0	1	6%
Issuance Criteria Not Met- PD	0	0	0	0	0	0	0	0	0	0	0	0	0	0%
No Warning Sign	0	0	0	0	0	0	0	0	0	0	0	0	0	0%
No Plate	4	0	3	1	3	1	4	2	2	3	3	2	3	15%
No Speed Captured	0	0	0	0	0	0	0	0	0	0	0	0	0	0%
Obstruction In Photo- PD	0	0	0	0	0	0	0	0	0	0	1	0	1	6%
Out of State	0	0	0	0	0	0	0	0	0	0	1	0	1	6%
Plate Obstructed	0	0	1	1	0	0	0	0	0	1	0	0	1	6%
Short Yellow- PD	0	0	0	0	0	0	0	0	0	0	0	0	0	0%
Third Party Damage	0	0	0	0	0	0	0	0	0	0	0	0	0	0%
TSB Epired	0	0	0	0	0	0	0	0	0	0	0	0	0	0%
TSB No Hit	0	0	0	0	0	0	0	0	0	0	0	0	0	0%
<b>Total:</b>	<b>9</b>	<b>9</b>	<b>10</b>	<b>7</b>	<b>8</b>	<b>6</b>	<b>8</b>	<b>10</b>	<b>8</b>	<b>6</b>	<b>10</b>	<b>4</b>	<b>16</b>	<b>100%</b>
<b>Controllable Non-Issued Violations</b>														
Conduent Expire	0	0	0	0	0	0	0	0	0	0	0	0	0	0%
Clarity of Plate	0	0	0	0	0	0	0	0	0	0	0	0	0	0%
Clarity of Driver	0	0	0	0	0	0	0	0	0	0	0	0	0	0%
Dark Interior	0	0	1	1	1	1	0	0	3	1	2	2	2	24%
Data Box Related- PD	0	0	0	0	0	0	0	0	0	0	0	0	0	0%
Data Box Data Error- PD	0	0	0	0	0	0	0	0	0	0	0	0	0	0%
Data Entry Error	1	0	0	0	0	0	0	0	0	0	1	1	1	16%
Exposed	0	0	0	0	0	0	0	0	0	0	0	0	0	0%
Equipment Malfunction	0	0	0	0	1	0	0	0	1	0	1	0	1	16%
Framing- PD	0	0	0	0	0	0	0	0	0	0	0	0	0	0%
Framing of Car	1	1	0	0	1	3	2	2	0	0	3	0	2	29%
Framing of Driver	0	0	0	0	0	0	0	0	0	0	0	0	0	0%
Operator Error	0	0	0	0	0	0	0	0	0	0	0	0	0	0%
Framing of Plate	0	0	0	0	0	0	0	0	0	0	0	0	0	0%
Reject Expired	0	0	0	0	0	0	0	0	0	0	0	0	0	0%
Speed Not Determined	0	0	0	0	1	0	0	0	0	0	0	0	1	16%
<b>Total:</b>	<b>2</b>	<b>1</b>	<b>1</b>	<b>1</b>	<b>4</b>	<b>4</b>	<b>2</b>	<b>2</b>	<b>4</b>	<b>1</b>	<b>7</b>	<b>3</b>	<b>6</b>	<b>100%</b>
<b>Summary Metrics</b>														
Daily Average Vehicle Passes	0	0	0	0	0	0	0	0	0	0	0	0	0	0
Average Issued Speed	19	20	17	17	17	16	17	17	21	21	19	0	18	
Average Issued Red Seconds	42.5	0.5	54.8	24.8	67.6	231.4	80.6	33.6	7.0	94.7	192.0	0.0	75.4	
Citation / Violation Issuance Rate	0%	17%	21%	33%	25%	0%	9%	14%	29%	42%	15%	13%	22%	
Controllable Issuance Rate	0%	67%	75%	80%	50%	0%	33%	50%	56%	83%	30%	25%	55%	



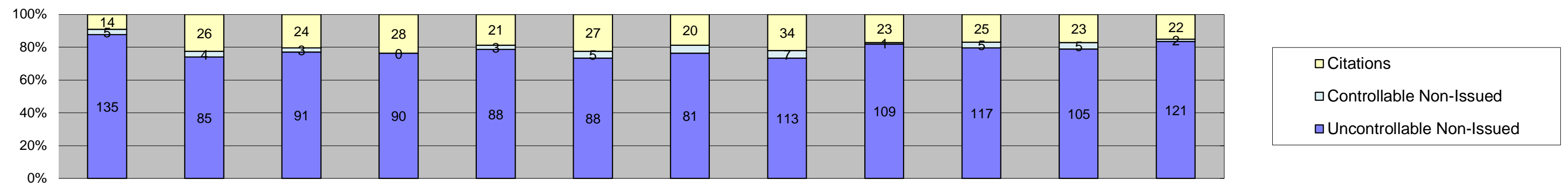
Los Angeles County MTA Expo Line  
 Approach Summary Report  
 Location 5079: WB to SB Exposition @ Bill Robertson



Events	Jan-18	Feb-18	Mar-18	Apr-18	May-18	Jun-18	Jul-18	Aug-18	Sep-18	Oct-18	Nov-18	Dec-18	Year to Date Monthly Average	
													Quantity	%
Non-Violations	288	266	276	315	281	312	374	305	310	329	262	277	300	95%
Violations	15	13	23	26	12	13	30	19	10	11	10	12	16	5%
<b>Total:</b>	<b>303</b>	<b>279</b>	<b>299</b>	<b>341</b>	<b>293</b>	<b>325</b>	<b>404</b>	<b>324</b>	<b>320</b>	<b>340</b>	<b>272</b>	<b>289</b>	<b>316</b>	<b>100%</b>
<b>Violations</b>														
Uncontrollable Non-Issued	4	9	14	10	8	12	19	12	7	4	6	10	10	54%
Controllable Non-Issued	2	0	2	3	0	1	3	1	0	0	0	0	2	11%
Citations	9	4	7	13	4	0	8	6	3	7	4	2	6	34%
<b>Total:</b>	<b>15</b>	<b>13</b>	<b>23</b>	<b>26</b>	<b>12</b>	<b>13</b>	<b>30</b>	<b>19</b>	<b>10</b>	<b>11</b>	<b>10</b>	<b>12</b>	<b>18</b>	<b>66%</b>
<b>Non-Violations</b>														
Emergency Vehicle Non-Issuable	1	1	1	3	0	2	0	0	1	1	2	2	2	0%
Emergency Vehicle PD	0	0	0	0	0	0	0	0	0	0	0	0	0	0%
Intersection Control in Progress-PD	0	0	0	0	0	0	0	0	0	0	0	0	0	0%
Gate Down/ No Train	0	0	0	0	0	0	0	0	0	0	0	0	0	0%
No Violation Occurred	95	64	76	91	75	70	56	47	78	66	48	69	70	22%
Rear Axle Activation	1	3	5	1	0	1	1	0	0	0	1	1	2	1%
Right Turn- No Violation	0	0	0	0	0	0	0	0	0	0	0	0	0	0%
Test Shot	191	198	194	220	206	239	317	258	231	234	195	184	222	70%
Train Activation	0	0	0	0	0	0	0	0	0	28	16	21	22	7%
Amber Time Low	0	0	0	0	0	0	0	0	0	0	0	0	0	0%
Vehicle Stopped- PD	0	0	0	0	0	0	0	0	0	0	0	0	0	0%
<b>Total:</b>	<b>288</b>	<b>266</b>	<b>276</b>	<b>315</b>	<b>281</b>	<b>312</b>	<b>374</b>	<b>305</b>	<b>310</b>	<b>329</b>	<b>262</b>	<b>277</b>	<b>317</b>	<b>100%</b>
<b>Uncontrollable Non-Issued Violations</b>														
Administrative Dismissal	0	0	0	0	0	0	0	0	0	0	0	0	0	0%
Address/CDL/DOB Match Fail	0	0	0	0	0	0	0	0	0	0	0	0	0	0%
Car Obstructed	0	0	1	0	0	0	1	0	0	0	0	0	1	5%
Conditions Beyond Control	0	0	0	0	0	0	0	0	0	0	0	0	0	0%
Driver Identity Unclear	0	0	0	0	0	0	0	0	0	0	0	0	0	0%
Driver Obstructed	0	2	2	0	2	2	0	1	0	0	0	2	2	10%
Exposed	0	0	0	0	0	0	0	0	0	0	0	0	0	0%
Emergency Vehicle Issue	0	0	0	0	0	0	1	0	0	0	0	0	1	5%
Glare on Plate	0	3	1	5	4	2	9	5	5	1	1	4	4	19%
Glare on Windshield	0	0	0	0	0	0	1	0	0	0	0	0	1	5%
Illegible Plate	0	0	0	0	0	0	0	0	0	0	1	0	1	5%
Interest of Justice- PD	0	0	0	0	0	0	0	0	0	0	0	0	0	0%
Image Quality- PD	0	0	0	0	0	1	0	0	0	0	1	0	1	5%
Issuance Criteria Not Met- PD	0	0	0	0	0	0	0	0	0	0	0	0	0	0%
No Warning Sign	0	0	0	0	0	0	0	0	0	0	0	0	0	0%
No Plate	1	2	4	3	2	3	6	4	2	3	3	4	3	16%
No Speed Captured	0	0	0	0	0	0	0	0	0	0	0	0	0	0%
Obstruction In Photo- PD	0	0	2	1	0	1	1	1	0	0	0	0	1	6%
Out of State	0	0	0	0	0	0	0	1	0	0	0	0	1	5%
Plate Obstructed	3	2	3	1	0	3	0	0	0	0	0	0	2	13%
Short Yellow- PD	0	0	0	0	0	0	0	0	0	0	0	0	0	0%
Third Party Damage	0	0	0	0	0	0	0	0	0	0	0	0	0	0%
TSB Epired	0	0	0	0	0	0	0	0	0	0	0	0	0	0%
TSB No Hit	0	0	1	0	0	0	0	0	0	0	0	0	1	5%
<b>Total:</b>	<b>4</b>	<b>9</b>	<b>14</b>	<b>10</b>	<b>8</b>	<b>12</b>	<b>19</b>	<b>12</b>	<b>7</b>	<b>4</b>	<b>6</b>	<b>10</b>	<b>19</b>	<b>100%</b>
<b>Controllable Non-Issued Violations</b>														
Conduent Expire	0	0	0	0	0	0	0	0	0	0	0	0	0	0%
Clarity of Plate	0	0	0	0	0	0	0	0	0	0	0	0	0	0%
Clarity of Driver	0	0	0	0	0	0	0	0	0	0	0	0	0	0%
Dark Interior	0	0	0	0	0	0	0	0	0	0	0	0	0	0%
Data Box Related- PD	0	0	0	0	0	0	0	0	0	0	0	0	0	0%
Data Box Data Error- PD	0	0	0	0	0	0	0	0	0	0	0	0	0	0%
Data Entry Error	0	0	0	0	0	0	0	0	0	0	0	0	0	0%
Exposed	0	0	0	0	0	0	0	0	0	0	0	0	0	0%
Equipment Malfunction	0	0	0	0	0	0	0	0	0	0	0	0	0	0%
Framing- PD	0	0	0	0	0	0	0	0	0	0	0	0	0	0%
Framing of Car	1	0	0	3	0	1	3	1	0	0	0	0	2	55%
Framing of Driver	0	0	0	0	0	0	0	0	0	0	0	0	0	0%
Operator Error	0	0	0	0	0	0	0	0	0	0	0	0	0	0%
Framing of Plate	0	0	0	0	0	0	0	0	0	0	0	0	0	0%
Reject Expired	0	0	0	0	0	0	0	0	0	0	0	0	0	0%
Speed Not Determined	1	0	2	0	0	0	0	0	0	0	0	0	2	45%
<b>Total:</b>	<b>2</b>	<b>0</b>	<b>2</b>	<b>3</b>	<b>0</b>	<b>1</b>	<b>3</b>	<b>1</b>	<b>0</b>	<b>0</b>	<b>0</b>	<b>0</b>	<b>3</b>	<b>100%</b>
<b>Summary Metrics</b>														
Daily Average Vehicle Passes	0	0	0	0	0	0	0	0	0	0	0	0	0	0
Average Issued Speed	17	15	16	16	15	16	16	14	16	17	15	14	16	16
Average Issued Red Seconds	20.0	0.4	0.8	0.6	329.8	0.3	20.5	5.6	34.1	0.3	0.7	0.7	34.5	34.5
Citation / Violation Issuance Rate	60%	31%	30%	50%	33%	0%	27%	32%	30%	64%	40%	17%	38%	38%
Controllable Issuance Rate	82%	100%	78%	81%	100%	0%	73%	86%	100%	100%	100%	100%	91%	91%



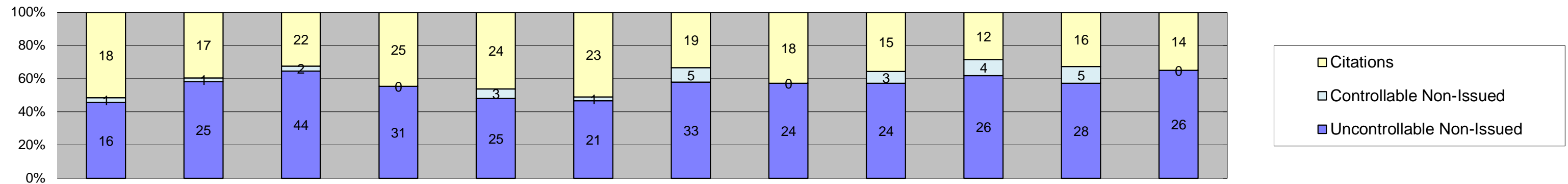
Los Angeles County MTA Expo Line  
 Approach Summary Report  
 Location 5087: EB to NB Exposition @ Vermont



Events	Jan-18	Feb-18	Mar-18	Apr-18	May-18	Jun-18	Jul-18	Aug-18	Sep-18	Oct-18	Nov-18	Dec-18	Year to Date Monthly Average	
													Quantity	%
Non-Violations	831	865	913	932	900	927	968	1,063	846	946	833	856	907	87%
Violations	154	115	118	118	112	120	106	154	133	147	133	145	130	13%
<b>Total:</b>	<b>985</b>	<b>980</b>	<b>1,031</b>	<b>1,050</b>	<b>1,012</b>	<b>1,047</b>	<b>1,074</b>	<b>1,217</b>	<b>979</b>	<b>1,093</b>	<b>966</b>	<b>1,001</b>	<b>1,036</b>	<b>100%</b>
<b>Violations</b>														
Uncontrollable Non-Issued	135	85	91	90	88	88	81	113	109	117	105	121	102	78%
Controllable Non-Issued	5	4	3	0	3	5	5	7	1	5	5	2	4	3%
Citations	14	26	24	28	21	27	20	34	23	25	23	22	24	18%
<b>Total:</b>	<b>154</b>	<b>115</b>	<b>118</b>	<b>118</b>	<b>112</b>	<b>120</b>	<b>106</b>	<b>154</b>	<b>133</b>	<b>147</b>	<b>133</b>	<b>145</b>	<b>130</b>	<b>82%</b>
<b>Non-Violations</b>														
Emergency Vehicle Non-Issuable	2	0	4	2	2	4	0	3	1	1	2	3	2	0%
Emergency Vehicle PD	0	0	0	0	0	0	0	1	0	0	0	1	1	0%
Intersection Control in Progress-PD	0	0	0	0	0	0	0	0	0	0	0	0	0	0%
Gate Down/ No Train	0	0	0	0	0	0	0	0	0	0	0	0	0	0%
No Violation Occurred	688	703	751	768	749	755	791	893	690	329	253	210	632	51%
Rear Axle Activation	3	10	8	13	4	4	5	15	15	18	14	14	10	1%
Right Turn- No Violation	0	0	0	0	0	0	0	0	0	0	0	0	0	0%
Test Shot	138	152	150	149	145	164	172	151	140	148	149	142	150	12%
Train Activation	0	0	0	0	0	0	0	0	0	450	415	486	450	36%
Amber Time Low	0	0	0	0	0	0	0	0	0	0	0	0	0	0%
Vehicle Stopped- PD	0	0	0	0	0	0	0	0	0	0	0	0	0	0%
<b>Total:</b>	<b>831</b>	<b>865</b>	<b>913</b>	<b>932</b>	<b>900</b>	<b>927</b>	<b>968</b>	<b>1,063</b>	<b>846</b>	<b>946</b>	<b>833</b>	<b>856</b>	<b>1,246</b>	<b>100%</b>
<b>Uncontrollable Non-Issued Violations</b>														
Administrative Dismissal	0	0	0	0	0	0	0	0	0	0	0	0	0	0%
Address/CDL/DOB Match Fail	0	0	0	0	0	0	0	0	0	0	0	0	0	0%
Car Obstructed	2	0	1	2	0	0	0	0	0	1	1	1	1	1%
Conditions Beyond Control	0	0	0	0	0	0	0	0	0	0	0	0	0	0%
Driver Identity Unclear	18	4	3	5	3	6	4	5	3	10	1	1	5	5%
Driver Obstructed	0	0	5	3	4	3	1	4	2	3	1	4	3	3%
Exposed	0	0	0	0	0	0	0	0	0	0	0	0	0	0%
Emergency Vehicle Issue	0	1	0	0	0	2	1	0	1	0	0	1	1	1%
Glare on Plate	46	48	43	51	54	40	35	50	53	46	45	54	47	42%
Glare on Windshield	30	12	7	14	5	9	12	25	19	32	21	31	18	16%
Illegible Plate	0	0	1	0	0	0	2	0	0	1	0	0	1	1%
Interest of Justice- PD	0	0	0	0	0	0	0	0	0	0	0	0	0	0%
Image Quality- PD	10	2	1	3	3	6	2	3	0	0	8	1	4	4%
Issuance Criteria Not Met- PD	0	0	0	0	0	0	0	0	0	0	0	0	0	0%
No Warning Sign	0	0	0	0	0	0	0	0	0	0	0	0	0	0%
No Plate	22	15	25	12	15	18	20	23	12	29	24	24	21	19%
No Speed Captured	0	0	0	0	0	0	0	0	0	0	0	0	0	0%
Obstruction In Photo- PD	3	0	0	0	0	2	1	2	1	0	1	0	2	1%
Out of State	2	0	2	0	0	2	1	1	1	0	1	2	2	1%
Plate Obstructed	2	3	2	0	4	0	2	0	0	0	0	0	3	2%
Short Yellow- PD	0	0	0	0	0	0	0	0	0	0	0	0	0	0%
Third Party Damage	0	0	0	0	0	0	0	0	0	0	0	0	0	0%
TSB Expired	0	0	0	0	0	0	0	0	0	0	1	0	1	1%
TSB No Hit	0	0	1	0	0	0	0	0	0	0	1	6	3	2%
<b>Total:</b>	<b>135</b>	<b>85</b>	<b>91</b>	<b>90</b>	<b>88</b>	<b>88</b>	<b>81</b>	<b>113</b>	<b>109</b>	<b>117</b>	<b>105</b>	<b>121</b>	<b>111</b>	<b>100%</b>
<b>Controllable Non-Issued Violations</b>														
Conduent Expire	0	0	0	0	0	0	0	0	0	0	0	0	0	0%
Clarity of Plate	0	0	0	0	0	0	0	0	0	0	0	0	0	0%
Clarity of Driver	0	0	0	0	0	0	0	0	0	0	0	0	0	0%
Dark Interior	1	0	0	0	0	1	1	3	0	5	1	2	2	25%
Data Box Related- PD	0	0	0	0	0	0	0	0	0	0	0	0	0	0%
Data Box Data Error- PD	0	0	0	0	0	1	0	0	0	0	0	0	1	12%
Data Entry Error	0	2	2	0	0	2	3	2	0	0	1	0	2	25%
Exposed	0	0	0	0	0	0	0	0	0	0	0	0	0	0%
Equipment Malfunction	0	0	0	0	0	0	0	0	0	0	0	0	0	0%
Framing- PD	0	0	0	0	0	0	0	0	0	0	0	0	0	0%
Framing of Car	2	2	1	0	2	1	0	2	1	0	3	0	2	22%
Framing of Driver	0	0	0	0	0	0	0	0	0	0	0	0	0	0%
Operator Error	0	0	0	0	0	0	0	0	0	0	0	0	0	0%
Framing of Plate	0	0	0	0	0	0	0	0	0	0	0	0	0	0%
Reject Expired	0	0	0	0	0	0	0	0	0	0	0	0	0	0%
Speed Not Determined	2	0	0	0	1	0	1	0	0	0	0	0	1	16%
<b>Total:</b>	<b>5</b>	<b>4</b>	<b>3</b>	<b>0</b>	<b>3</b>	<b>5</b>	<b>5</b>	<b>7</b>	<b>1</b>	<b>5</b>	<b>5</b>	<b>2</b>	<b>8</b>	<b>100%</b>
<b>Summary Metrics</b>														
Daily Average Vehicle Passes	0	0	0	0	0	0	0	0	0	0	0	0	0	0
Average Issued Speed	19	20	20	20	20	20	20	20	20	20	20	20	20	20
Average Issued Red Seconds	0.9	0.5	0.4	0.5	0.5	0.6	1.1	1.1	0.8	0.5	0.6	0.6	0.7	0.7
Citation / Violation Issuance Rate	9%	23%	20%	24%	19%	23%	19%	22%	17%	17%	17%	15%	19%	19%
Controllable Issuance Rate	74%	87%	89%	100%	88%	84%	80%	83%	96%	83%	82%	92%	86%	86%



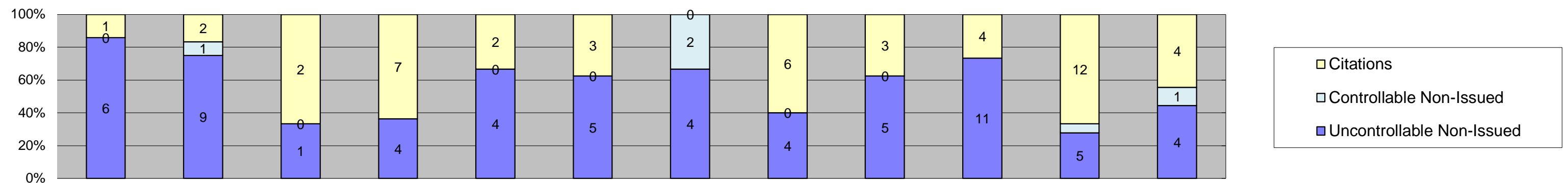
Los Angeles County MTA Expo Line  
Approach Summary Report  
Location 5089: WB to SB Exposition @ Vermont



Events	Jan-18	Feb-18	Mar-18	Apr-18	May-18	Jun-18	Jul-18	Aug-18	Sep-18	Oct-18	Nov-18	Dec-18	Year to Date Monthly Average	
													Quantity	%
Non-Violations	585	558	629	657	697	729	662	702	681	705	653	575	653	93%
Violations	35	43	68	56	52	45	57	42	42	42	49	40	48	7%
<b>Total:</b>	<b>620</b>	<b>601</b>	<b>697</b>	<b>713</b>	<b>749</b>	<b>774</b>	<b>719</b>	<b>744</b>	<b>723</b>	<b>747</b>	<b>702</b>	<b>615</b>	<b>700</b>	<b>100%</b>
<b>Violations</b>														
Uncontrollable Non-Issued	16	25	44	31	25	21	33	24	24	26	28	26	27	56%
Controllable Non-Issued	1	1	2	0	3	1	5	0	3	4	5	0	3	6%
Citations	18	17	22	25	24	23	19	18	15	12	16	14	19	38%
<b>Total:</b>	<b>35</b>	<b>43</b>	<b>68</b>	<b>56</b>	<b>52</b>	<b>45</b>	<b>57</b>	<b>42</b>	<b>42</b>	<b>42</b>	<b>49</b>	<b>40</b>	<b>48</b>	<b>62%</b>
<b>Non-Violations</b>														
Emergency Vehicle Non-Issuable	0	4	1	1	2	3	2	0	1	0	2	2	2	0%
Emergency Vehicle PD	0	0	0	0	0	0	0	0	0	0	0	0	0	0%
Intersection Control in Progress-PD	0	0	0	0	0	0	0	0	0	0	0	0	0	0%
Gate Down/ No Train	0	0	0	0	0	0	0	0	0	0	0	0	0	0%
No Violation Occurred	461	433	505	523	560	587	521	578	545	57	53	41	405	41%
Rear Axle Activation	6	4	5	3	1	2	10	5	16	12	13	5	7	1%
Right Turn- No Violation	0	0	0	0	0	0	0	0	0	0	0	0	0	0%
Test Shot	118	117	118	130	134	137	129	119	119	122	136	117	125	13%
Train Activation	0	0	0	0	0	0	0	0	0	514	449	410	458	46%
Amber Time Low	0	0	0	0	0	0	0	0	0	0	0	0	0	0%
Vehicle Stopped- PD	0	0	0	0	0	0	0	0	0	0	0	0	0	0%
<b>Total:</b>	<b>585</b>	<b>558</b>	<b>629</b>	<b>657</b>	<b>697</b>	<b>729</b>	<b>662</b>	<b>702</b>	<b>681</b>	<b>705</b>	<b>653</b>	<b>575</b>	<b>997</b>	<b>100%</b>
<b>Uncontrollable Non-Issued Violations</b>														
Administrative Dismissal	0	0	0	0	0	0	0	0	0	0	0	0	0	0%
Address/CDL/DOB Match Fail	0	0	0	0	0	0	0	0	0	0	0	0	0	0%
Car Obstructed	0	0	0	0	0	0	0	2	1	2	1	2	2	5%
Conditions Beyond Control	0	0	0	0	0	0	0	0	0	0	0	0	0	0%
Driver Identity Unclear	3	4	3	4	2	2	1	2	0	2	1	0	2	7%
Driver Obstructed	1	2	3	3	1	4	0	1	2	1	2	0	2	6%
Exposed	0	0	0	0	0	0	0	0	0	0	0	0	0	0%
Emergency Vehicle Issue	1	0	1	2	0	0	0	0	0	0	0	0	1	4%
Glare on Plate	3	7	9	7	9	4	8	5	10	10	5	14	8	22%
Glare on Windshield	0	0	0	1	1	1	2	1	1	0	2	1	1	4%
Illegible Plate	0	0	0	0	1	0	0	1	0	0	0	0	1	3%
Interest of Justice- PD	0	0	0	0	0	0	0	0	0	0	0	0	0	0%
Image Quality- PD	0	0	1	1	3	3	2	0	1	0	0	0	2	5%
Issuance Criteria Not Met- PD	0	0	0	0	0	0	0	0	0	0	0	0	0	0%
No Warning Sign	0	0	0	0	0	0	0	0	0	0	0	0	0	0%
No Plate	7	6	17	9	7	5	17	10	8	10	13	5	10	28%
No Speed Captured	0	0	0	0	0	0	0	0	0	0	0	0	0	0%
Obstruction In Photo- PD	1	3	2	2	0	1	1	0	0	1	1	1	1	4%
Out of State	0	1	1	0	0	0	0	0	0	0	0	0	1	3%
Plate Obstructed	0	2	5	2	1	1	2	2	1	0	2	1	2	6%
Short Yellow- PD	0	0	0	0	0	0	0	0	0	0	0	0	0	0%
Third Party Damage	0	0	0	0	0	0	0	0	0	0	0	0	0	0%
TSB Epired	0	0	0	0	0	0	0	0	0	0	0	0	0	0%
TSB No Hit	0	0	2	0	0	0	0	0	0	0	1	2	2	5%
<b>Total:</b>	<b>16</b>	<b>25</b>	<b>44</b>	<b>31</b>	<b>25</b>	<b>21</b>	<b>33</b>	<b>24</b>	<b>24</b>	<b>26</b>	<b>28</b>	<b>26</b>	<b>35</b>	<b>100%</b>
<b>Controllable Non-Issued Violations</b>														
Conduent Expire	0	0	0	0	0	0	0	0	0	0	0	0	0	0%
Clarity of Plate	0	0	0	0	1	0	0	0	0	0	0	0	1	13%
Clarity of Driver	0	0	0	0	0	0	0	0	0	0	0	0	0	0%
Dark Interior	0	0	0	0	0	0	0	0	1	2	4	0	2	30%
Data Box Related- PD	0	0	0	0	0	0	0	0	0	0	0	0	0	0%
Data Box Data Error- PD	0	0	0	0	0	0	0	0	0	0	0	0	0	0%
Data Entry Error	0	0	0	0	0	0	0	0	1	0	0	0	1	13%
Exposed	0	0	0	0	0	0	0	0	0	0	0	0	0	0%
Equipment Malfunction	1	0	0	0	0	0	0	0	0	1	0	0	1	13%
Framing- PD	0	0	0	0	0	0	0	0	0	0	0	0	0	0%
Framing of Car	0	1	1	0	1	1	4	0	1	1	1	0	1	18%
Framing of Driver	0	0	0	0	0	0	0	0	0	0	0	0	0	0%
Operator Error	0	0	0	0	0	0	0	0	0	0	0	0	0	0%
Framing of Plate	0	0	0	0	0	0	0	0	0	0	0	0	0	0%
Reject Expired	0	0	0	0	0	0	0	0	0	0	0	0	0	0%
Speed Not Determined	0	0	1	0	1	0	1	0	0	0	0	0	1	13%
<b>Total:</b>	<b>1</b>	<b>1</b>	<b>2</b>	<b>0</b>	<b>3</b>	<b>1</b>	<b>5</b>	<b>0</b>	<b>3</b>	<b>4</b>	<b>5</b>	<b>0</b>	<b>8</b>	<b>100%</b>
<b>Summary Metrics</b>														
Daily Average Vehicle Passes	0	0	0	0	0	0	0	0	0	0	0	0	0	0
Average Issued Speed	18	19	19	20	20	20	20	18	19	19	18	18	19	19
Average Issued Red Seconds	41.4	50.0	0.6	0.5	9.0	0.5	13.1	0.3	4.1	11.1	0.6	0.3	11.0	11.0
Citation / Violation Issuance Rate	51%	40%	32%	45%	46%	51%	33%	43%	36%	29%	33%	35%	39%	39%
Controllable Issuance Rate	95%	94%	92%	100%	89%	96%	79%	100%	83%	75%	76%	100%	90%	90%



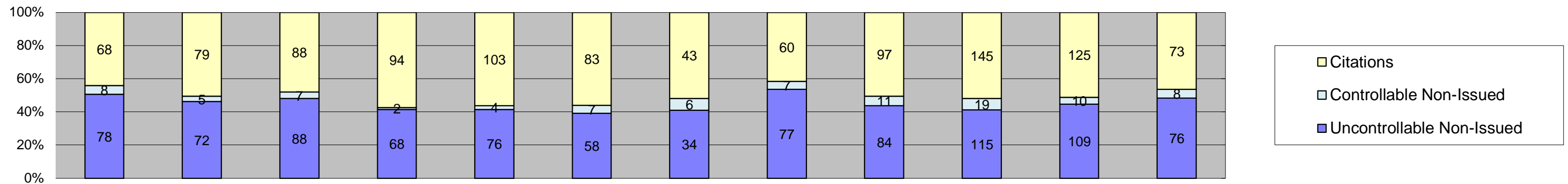
Los Angeles County MTA Expo Line  
 Approach Summary Report  
 Location 5097: EB to NB Exposition @ Raymond



Events	Jan-18	Feb-18	Mar-18	Apr-18	May-18	Jun-18	Jul-18	Aug-18	Sep-18	Oct-18	Nov-18	Dec-18	Year to Date Monthly Average	
													Quantity	%
Non-Violations	367	296	325	325	768	324	244	293	282	278	288	292	340	97%
Violations	7	12	3	11	6	8	6	10	8	15	18	9	9	3%
<b>Total:</b>	<b>374</b>	<b>308</b>	<b>328</b>	<b>336</b>	<b>774</b>	<b>332</b>	<b>250</b>	<b>303</b>	<b>290</b>	<b>293</b>	<b>306</b>	<b>301</b>	<b>350</b>	<b>100%</b>
<b>Violations</b>														
Uncontrollable Non-Issued	6	9	1	4	4	5	4	4	5	11	5	4	5	49%
Controllable Non-Issued	0	1	0	0	0	0	2	0	0	0	1	1	1	12%
Citations	1	2	2	7	2	3	0	6	3	4	12	4	4	39%
<b>Total:</b>	<b>7</b>	<b>12</b>	<b>3</b>	<b>11</b>	<b>6</b>	<b>8</b>	<b>6</b>	<b>10</b>	<b>8</b>	<b>15</b>	<b>18</b>	<b>9</b>	<b>11</b>	<b>61%</b>
<b>Non-Violations</b>														
Emergency Vehicle Non-Issuable	2	2	0	1	0	3	0	0	0	2	1	3	2	1%
Emergency Vehicle PD	0	0	0	0	0	0	0	0	0	0	0	0	0	0%
Intersection Control in Progress-PD	0	0	0	0	0	0	0	0	0	0	0	0	0	0%
Gate Down/ No Train	0	0	0	0	0	0	0	0	0	0	0	0	0	0%
No Violation Occurred	318	256	282	276	725	271	221	242	258	215	229	212	292	78%
Rear Axle Activation	0	1	1	1	0	0	1	0	1	1	0	0	1	0%
Right Turn- No Violation	0	0	0	0	0	0	0	0	0	0	0	0	0	0%
Test Shot	47	37	42	47	43	50	22	51	23	18	20	32	36	10%
Train Activation	0	0	0	0	0	0	0	0	0	42	38	45	42	11%
Amber Time Low	0	0	0	0	0	0	0	0	0	0	0	0	0	0%
Vehicle Stopped- PD	0	0	0	0	0	0	0	0	0	0	0	0	0	0%
<b>Total:</b>	<b>367</b>	<b>296</b>	<b>325</b>	<b>325</b>	<b>768</b>	<b>324</b>	<b>244</b>	<b>293</b>	<b>282</b>	<b>278</b>	<b>288</b>	<b>292</b>	<b>373</b>	<b>100%</b>
<b>Uncontrollable Non-Issued Violations</b>														
Administrative Dismissal	0	0	0	0	0	0	0	0	0	0	0	0	0	0%
Address/CDL/DOB Match Fail	0	0	0	0	0	0	0	0	0	0	0	0	0	0%
Car Obstructed	0	0	0	0	0	0	0	0	0	0	0	0	0	0%
Conditions Beyond Control	0	0	0	0	0	0	0	0	0	0	0	0	0	0%
Driver Identity Unclear	0	1	0	0	0	0	0	0	0	0	1	0	1	8%
Driver Obstructed	0	0	1	2	0	0	0	0	1	1	1	0	1	10%
Exposed	0	0	0	0	0	0	0	0	0	0	0	0	0	0%
Emergency Vehicle Issue	0	0	0	0	0	2	0	0	1	0	1	0	1	11%
Glare on Plate	0	0	0	0	0	0	0	0	0	0	0	0	0	0%
Glare on Windshield	0	1	0	0	0	0	0	0	0	1	0	0	1	8%
Illegible Plate	0	0	0	0	0	0	0	0	0	0	0	0	0	0%
Interest of Justice- PD	0	0	0	0	0	0	0	0	0	0	0	0	0	0%
Image Quality- PD	0	0	0	0	0	0	0	0	0	0	0	0	0	0%
Issuance Criteria Not Met- PD	0	0	0	0	0	0	0	0	0	0	0	0	0	0%
No Warning Sign	0	0	0	0	0	0	0	0	0	0	0	0	0	0%
No Plate	5	7	0	2	3	2	2	3	2	8	2	2	3	28%
No Speed Captured	0	0	0	0	0	0	0	0	0	0	0	0	0	0%
Obstruction In Photo- PD	1	0	0	0	0	0	0	0	0	1	0	0	1	8%
Out of State	0	0	0	0	1	1	2	1	1	0	0	0	1	10%
Plate Obstructed	0	0	0	0	0	0	0	0	0	0	0	0	0	0%
Short Yellow- PD	0	0	0	0	0	0	0	0	0	0	0	0	0	0%
Third Party Damage	0	0	0	0	0	0	0	0	0	0	0	0	0	0%
TSB Epired	0	0	0	0	0	0	0	0	0	0	0	0	0	0%
TSB No Hit	0	0	0	0	0	0	0	0	0	0	0	2	2	16%
<b>Total:</b>	<b>6</b>	<b>9</b>	<b>1</b>	<b>4</b>	<b>4</b>	<b>5</b>	<b>4</b>	<b>4</b>	<b>5</b>	<b>11</b>	<b>5</b>	<b>4</b>	<b>12</b>	<b>100%</b>
<b>Controllable Non-Issued Violations</b>														
Conduent Expire	0	0	0	0	0	0	0	0	0	0	0	0	0	0%
Clarity of Plate	0	0	0	0	0	0	0	0	0	0	0	0	0	0%
Clarity of Driver	0	0	0	0	0	0	0	0	0	0	0	0	0	0%
Dark Interior	0	0	0	0	0	0	2	0	0	0	0	0	2	67%
Data Box Related- PD	0	0	0	0	0	0	0	0	0	0	0	0	0	0%
Data Box Data Error- PD	0	0	0	0	0	0	0	0	0	0	0	0	0	0%
Data Entry Error	0	1	0	0	0	0	0	0	0	0	1	1	1	33%
Exposed	0	0	0	0	0	0	0	0	0	0	0	0	0	0%
Equipment Malfunction	0	0	0	0	0	0	0	0	0	0	0	0	0	0%
Framing- PD	0	0	0	0	0	0	0	0	0	0	0	0	0	0%
Framing of Car	0	0	0	0	0	0	0	0	0	0	0	0	0	0%
Framing of Driver	0	0	0	0	0	0	0	0	0	0	0	0	0	0%
Operator Error	0	0	0	0	0	0	0	0	0	0	0	0	0	0%
Framing of Plate	0	0	0	0	0	0	0	0	0	0	0	0	0	0%
Reject Expired	0	0	0	0	0	0	0	0	0	0	0	0	0	0%
Speed Not Determined	0	0	0	0	0	0	0	0	0	0	0	0	0	0%
<b>Total:</b>	<b>0</b>	<b>1</b>	<b>0</b>	<b>0</b>	<b>0</b>	<b>0</b>	<b>2</b>	<b>0</b>	<b>0</b>	<b>0</b>	<b>1</b>	<b>1</b>	<b>3</b>	<b>100%</b>
<b>Summary Metrics</b>														
Daily Average Vehicle Passes	0	0	0	0	0	0	0	0	0	0	0	0	0	0
Average Issued Speed	18	16	21	18	14	17	22	17	18	16	28	18	19	
Average Issued Red Seconds	0.8	346.9	0.3	194.9	334.4	156.6	384.9	288.6	256.1	88.9	297.9	303.9	221.2	
Citation / Violation Issuance Rate	14%	17%	67%	64%	33%	38%	0%	60%	38%	27%	67%	44%	42%	
Controllable Issuance Rate	100%	67%	100%	100%	100%	100%	0%	100%	100%	100%	92%	80%	94%	



Los Angeles County MTA Expo Line  
 Approach Summary Report  
 Location 5107: EB to NB Exposition @ Normandie

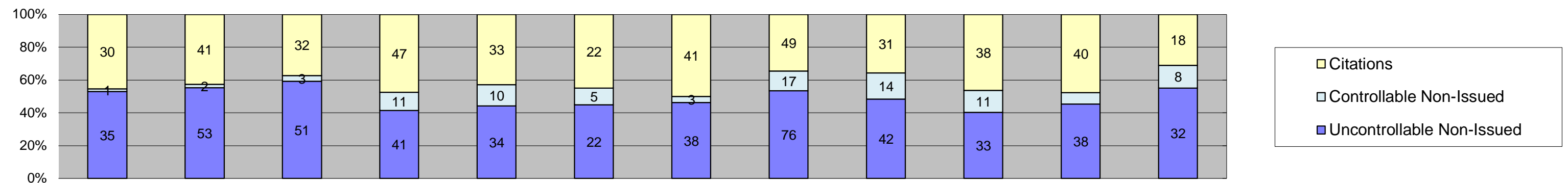


Events	Jan-18	Feb-18	Mar-18	Apr-18	May-18	Jun-18	Jul-18	Aug-18	Sep-18	Oct-18	Nov-18	Dec-18	Year to Date Monthly Average	
													Quantity	%
Non-Violations	485	413	482	435	419	475	406	427	361	420	384	368	423	71%
Violations	154	156	183	164	183	148	83	144	192	279	244	157	174	29%
<b>Total:</b>	<b>639</b>	<b>569</b>	<b>665</b>	<b>599</b>	<b>602</b>	<b>623</b>	<b>489</b>	<b>571</b>	<b>553</b>	<b>699</b>	<b>628</b>	<b>525</b>	<b>597</b>	<b>100%</b>
<b>Violations</b>														
Uncontrollable Non-Issued	78	72	88	68	76	58	34	77	84	115	109	76	78	45%
Controllable Non-Issued	8	5	7	2	4	7	6	7	11	19	10	8	8	5%
Citations	68	79	88	94	103	83	43	60	97	145	125	73	88	51%
<b>Total:</b>	<b>154</b>	<b>156</b>	<b>183</b>	<b>164</b>	<b>183</b>	<b>148</b>	<b>83</b>	<b>144</b>	<b>192</b>	<b>279</b>	<b>244</b>	<b>157</b>	<b>174</b>	<b>49%</b>
<b>Non-Violations</b>														
Emergency Vehicle Non-Issuable	5	1	5	2	0	3	7	5	6	5	7	0	5	1%
Emergency Vehicle PD	0	0	0	0	3	0	0	0	0	0	0	0	3	1%
Intersection Control in Progress-PD	0	0	0	1	0	0	0	0	0	0	0	0	1	0%
Gate Down/ No Train	0	0	0	0	0	0	0	0	0	0	0	0	0	0%
No Violation Occurred	336	294	329	299	286	328	258	269	221	141	149	145	255	53%
Rear Axle Activation	6	3	2	3	2	7	7	21	15	39	22	12	12	2%
Right Turn- No Violation	0	0	0	0	0	0	0	0	0	0	0	0	0	0%
Test Shot	137	115	146	130	128	137	134	132	118	124	121	120	129	27%
Train Activation	0	0	0	0	0	0	0	0	1	111	85	91	72	15%
Amber Time Low	0	0	0	0	0	0	0	0	0	0	0	0	0	0%
Vehicle Stopped- PD	1	0	0	0	0	0	0	0	0	0	0	0	1	0%
<b>Total:</b>	<b>485</b>	<b>413</b>	<b>482</b>	<b>435</b>	<b>419</b>	<b>475</b>	<b>406</b>	<b>427</b>	<b>361</b>	<b>420</b>	<b>384</b>	<b>368</b>	<b>476</b>	<b>100%</b>
<b>Uncontrollable Non-Issued Violations</b>														
Administrative Dismissal	0	0	0	0	0	0	0	0	0	0	0	0	0	0%
Address/CDL/DOB Match Fail	0	0	0	0	0	0	0	0	0	0	0	0	0	0%
Car Obstructed	2	0	1	2	3	0	0	2	1	0	3	0	2	2%
Conditions Beyond Control	0	0	0	0	0	0	0	0	0	0	0	0	0	0%
Driver Identity Unclear	6	8	5	0	0	0	2	2	3	7	1	1	4	4%
Driver Obstructed	0	1	3	2	4	5	1	6	5	3	1	2	3	3%
Exposed	0	0	0	0	0	0	0	0	0	0	0	0	0	0%
Emergency Vehicle Issue	0	1	0	0	0	1	1	2	0	1	0	1	1	1%
Glare on Plate	35	23	22	24	25	11	9	12	23	44	35	24	24	26%
Glare on Windshield	2	2	1	1	1	0	1	7	5	3	6	3	3	3%
Illegible Plate	0	0	0	0	0	0	1	1	0	2	0	0	1	1%
Interest of Justice- PD	0	0	0	0	0	0	0	0	0	0	0	0	0	0%
Image Quality- PD	3	0	1	3	3	5	1	2	0	1	4	1	2	3%
Issuance Criteria Not Met- PD	0	0	0	0	0	0	0	0	0	4	1	0	3	3%
No Warning Sign	0	0	0	0	0	0	0	0	0	0	0	0	0	0%
No Plate	21	22	31	31	31	27	16	36	40	39	48	24	31	34%
No Speed Captured	0	0	0	0	0	0	0	0	0	0	0	0	0	0%
Obstruction In Photo- PD	4	7	5	4	5	4	1	0	1	4	2	2	4	4%
Out of State	0	2	4	0	0	2	1	2	3	4	3	1	2	3%
Plate Obstructed	5	6	6	1	4	3	0	5	2	3	0	1	4	4%
Short Yellow- PD	0	0	0	0	0	0	0	0	0	0	0	0	0	0%
Third Party Damage	0	0	0	0	0	0	0	0	0	0	0	0	0	0%
TSB Epired	0	0	0	0	0	0	0	0	0	0	0	0	0	0%
TSB No Hit	0	0	9	0	0	0	0	0	1	0	5	16	8	9%
<b>Total:</b>	<b>78</b>	<b>72</b>	<b>88</b>	<b>68</b>	<b>76</b>	<b>58</b>	<b>34</b>	<b>77</b>	<b>84</b>	<b>115</b>	<b>109</b>	<b>76</b>	<b>91</b>	<b>100%</b>
<b>Controllable Non-Issued Violations</b>														
Conduent Expire	0	0	0	0	0	0	0	0	0	0	0	0	0	0%
Clarity of Plate	0	0	0	0	0	0	0	0	0	0	0	0	0	0%
Clarity of Driver	0	0	0	0	0	0	0	0	0	0	0	0	0	0%
Dark Interior	5	0	2	1	0	1	1	0	3	10	8	3	4	30%
Data Box Related- PD	0	0	0	0	0	0	0	0	0	0	0	0	0	0%
Data Box Data Error- PD	0	0	0	0	0	0	0	0	0	0	0	0	0	0%
Data Entry Error	0	0	2	0	0	0	1	2	4	2	0	0	2	17%
Exposed	0	0	0	0	0	0	0	0	0	0	0	0	0	0%
Equipment Malfunction	1	0	0	0	0	0	0	1	0	0	0	0	1	8%
Framing- PD	0	0	0	0	0	0	0	0	0	0	0	0	0	0%
Framing of Car	1	4	1	1	3	5	4	4	4	7	2	5	3	27%
Framing of Driver	0	0	0	0	0	0	0	0	0	0	0	0	0	0%
Operator Error	0	0	0	0	0	0	0	0	0	0	0	0	0	0%
Framing of Plate	1	0	0	0	0	0	0	0	0	0	0	0	1	8%
Reject Expired	0	0	0	0	0	0	0	0	0	0	0	0	0	0%
Speed Not Determined	0	1	2	0	1	1	0	0	0	0	0	0	1	10%
<b>Total:</b>	<b>8</b>	<b>5</b>	<b>7</b>	<b>2</b>	<b>4</b>	<b>7</b>	<b>6</b>	<b>7</b>	<b>11</b>	<b>19</b>	<b>10</b>	<b>8</b>	<b>13</b>	<b>100%</b>
<b>Summary Metrics</b>														
Daily Average Vehicle Passes	0	0	0	0	0	0	0	0	0	0	0	0	0	0
Average Issued Speed	20	21	20	21	20	21	21	20	19	20	19	20	20	20
Average Issued Red Seconds	0.5	0.4	1.3	2.1	1.0	0.5	2.7	0.5	1.6	1.4	0.4	0.4	1.1	1.1
Citation / Violation Issuance Rate	44%	51%	48%	57%	56%	56%	52%	42%	51%	52%	51%	46%	51%	51%
Controllable Issuance Rate	89%	94%	93%	98%	96%	92%	88%	90%	90%	88%	93%	90%	92%	92%





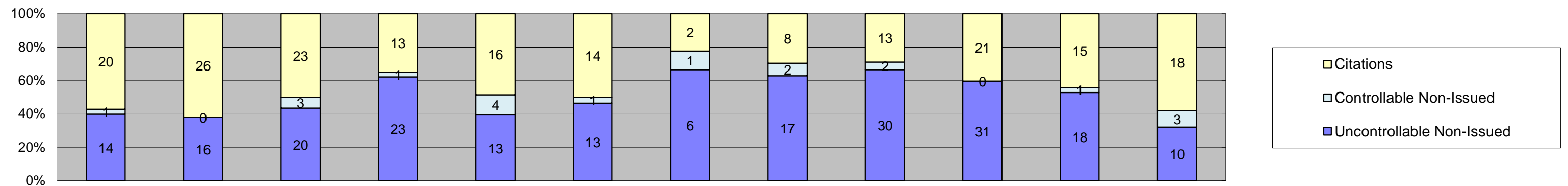
Los Angeles County MTA Expo Line  
 Approach Summary Report  
 Location 5109: WB to SB Exposition @ Normandie



Events	Jan-18	Feb-18	Mar-18	Apr-18	May-18	Jun-18	Jul-18	Aug-18	Sep-18	Oct-18	Nov-18	Dec-18	Year to Date Monthly Average	
													Quantity	%
Non-Violations	803	705	803	791	832	802	777	922	789	841	814	799	807	91%
Violations	66	96	86	99	77	49	82	142	87	82	84	58	84	9%
<b>Total:</b>	<b>869</b>	<b>801</b>	<b>889</b>	<b>890</b>	<b>909</b>	<b>851</b>	<b>859</b>	<b>1,064</b>	<b>876</b>	<b>923</b>	<b>898</b>	<b>857</b>	<b>891</b>	<b>100%</b>
<b>Violations</b>														
Uncontrollable Non-Issued	35	53	51	41	34	22	38	76	42	33	38	32	41	49%
Controllable Non-Issued	1	2	3	11	10	5	3	17	14	11	6	8	8	9%
Citations	30	41	32	47	33	22	41	49	31	38	40	18	35	42%
<b>Total:</b>	<b>66</b>	<b>96</b>	<b>86</b>	<b>99</b>	<b>77</b>	<b>49</b>	<b>82</b>	<b>142</b>	<b>87</b>	<b>82</b>	<b>84</b>	<b>58</b>	<b>84</b>	<b>58%</b>
<b>Non-Violations</b>														
Emergency Vehicle Non-Issuable	0	2	2	1	0	3	2	4	3	0	2	5	3	0%
Emergency Vehicle PD	0	0	0	0	0	1	0	1	0	0	0	0	1	0%
Intersection Control in Progress-PD	0	0	0	0	0	0	0	0	0	0	0	0	0	0%
Gate Down/ No Train	0	0	0	0	0	0	0	0	0	0	0	0	0	0%
No Violation Occurred	603	503	598	609	641	597	594	700	552	250	270	212	511	52%
Rear Axle Activation	12	8	6	7	3	8	7	18	20	11	12	7	10	1%
Right Turn- No Violation	0	0	0	0	0	0	0	0	0	0	0	0	0	0%
Test Shot	188	192	197	174	188	193	174	199	208	215	194	202	194	20%
Train Activation	0	0	0	0	0	0	0	0	6	365	336	372	270	27%
Amber Time Low	0	0	0	0	0	0	0	0	0	0	0	0	0	0%
Vehicle Stopped- PD	0	0	0	0	0	0	0	0	0	0	0	1	1	0%
<b>Total:</b>	<b>803</b>	<b>705</b>	<b>803</b>	<b>791</b>	<b>832</b>	<b>802</b>	<b>777</b>	<b>922</b>	<b>789</b>	<b>841</b>	<b>814</b>	<b>799</b>	<b>989</b>	<b>100%</b>
<b>Uncontrollable Non-Issued Violations</b>														
Administrative Dismissal	0	0	0	0	0	0	0	0	0	0	0	0	0	0%
Address/CDL/DOB Match Fail	0	0	0	0	0	0	0	0	0	0	0	0	0	0%
Car Obstructed	0	2	2	1	1	0	0	7	2	2	1	0	2	4%
Conditions Beyond Control	0	0	0	0	0	0	0	0	0	0	0	0	0	0%
Driver Identity Unclear	1	4	1	2	0	1	3	2	0	0	0	2	2	4%
Driver Obstructed	1	2	3	3	0	1	4	7	2	2	3	2	3	5%
Exposed	0	0	0	0	0	0	0	0	0	0	0	0	0	0%
Emergency Vehicle Issue	0	2	1	1	1	0	0	0	0	0	0	1	1	2%
Glare on Plate	12	16	12	12	14	8	11	18	11	7	15	12	12	24%
Glare on Windshield	0	0	1	0	0	2	4	6	1	0	0	0	3	5%
Illegible Plate	0	0	0	0	0	0	0	0	0	0	0	0	0	0%
Interest of Justice- PD	0	0	0	0	0	0	0	0	0	0	0	0	0	0%
Image Quality- PD	1	0	0	0	0	0	0	2	0	0	1	0	1	3%
Issuance Criteria Not Met- PD	0	0	0	0	0	0	0	0	0	1	0	0	1	2%
No Warning Sign	0	0	0	0	0	0	0	0	0	0	0	0	0	0%
No Plate	12	18	21	19	13	8	11	19	18	17	15	10	15	29%
No Speed Captured	0	0	0	0	0	0	0	0	0	0	0	0	0	0%
Obstruction In Photo- PD	3	4	1	0	0	1	1	5	0	0	0	0	3	5%
Out of State	1	1	3	0	1	0	3	8	2	0	0	1	3	5%
Plate Obstructed	4	3	4	3	4	1	1	2	4	3	2	0	3	5%
Short Yellow- PD	0	0	0	0	0	0	0	0	0	0	0	0	0	0%
Third Party Damage	0	0	0	0	0	0	0	0	0	0	0	0	0	0%
TSB Expired	0	1	0	0	0	0	0	0	2	1	0	0	1	3%
TSB No Hit	0	0	2	0	0	0	0	0	0	0	1	4	2	4%
<b>Total:</b>	<b>35</b>	<b>53</b>	<b>51</b>	<b>41</b>	<b>34</b>	<b>22</b>	<b>38</b>	<b>76</b>	<b>42</b>	<b>33</b>	<b>38</b>	<b>32</b>	<b>52</b>	<b>100%</b>
<b>Controllable Non-Issued Violations</b>														
Conduent Expire	0	0	0	0	0	0	0	0	0	0	0	0	0	0%
Clarity of Plate	0	0	0	0	0	0	0	0	0	0	0	0	0	0%
Clarity of Driver	0	0	0	0	0	0	0	0	0	0	0	0	0	0%
Dark Interior	0	1	0	2	0	0	0	1	2	3	1	1	2	11%
Data Box Related- PD	0	0	0	0	0	0	0	0	0	0	0	0	0	0%
Data Box Data Error- PD	0	0	0	0	0	0	0	0	0	0	0	0	0	0%
Data Entry Error	0	1	1	1	1	0	0	2	1	0	0	0	1	8%
Exposed	0	0	0	0	0	0	0	0	0	0	0	0	0	0%
Equipment Malfunction	0	0	0	0	0	0	0	0	0	2	0	0	2	13%
Framing- PD	0	0	0	0	0	0	0	0	0	0	0	0	0	0%
Framing of Car	1	0	2	8	9	5	3	11	10	6	5	7	6	41%
Framing of Driver	0	0	0	0	0	0	0	3	0	0	0	0	3	20%
Operator Error	0	0	0	0	0	0	0	0	0	0	0	0	0	0%
Framing of Plate	0	0	0	0	0	0	0	0	0	0	0	0	0	0%
Reject Expired	0	0	0	0	0	0	0	0	1	0	0	0	1	7%
Speed Not Determined	0	0	0	0	0	0	0	0	0	0	0	0	0	0%
<b>Total:</b>	<b>1</b>	<b>2</b>	<b>3</b>	<b>11</b>	<b>10</b>	<b>5</b>	<b>3</b>	<b>17</b>	<b>14</b>	<b>11</b>	<b>6</b>	<b>8</b>	<b>15</b>	<b>100%</b>
<b>Summary Metrics</b>														
Daily Average Vehicle Passes	0	0	0	0	0	0	0	0	0	0	0	0	0	0
Average Issued Speed	20	22	22	21	21	22	21	19	20	20	21	20	21	21
Average Issued Red Seconds	5.5	0.5	0.4	2.3	0.5	0.6	2.0	0.6	1.2	0.5	0.5	0.5	1.3	1.3
Citation / Violation Issuance Rate	45%	43%	37%	47%	43%	45%	50%	35%	36%	46%	48%	31%	42%	42%
Controllable Issuance Rate	97%	95%	91%	81%	77%	81%	93%	74%	69%	78%	87%	69%	83%	83%



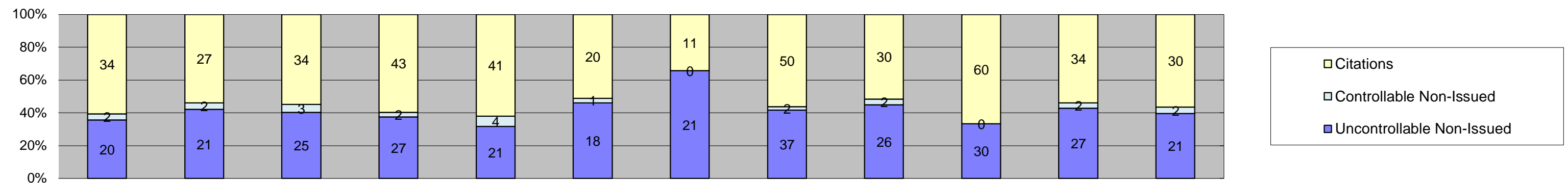
Los Angeles County MTA Expo Line  
 Approach Summary Report  
 Location 5117: EB to NB Exposition @ Halldale



Events	Jan-18	Feb-18	Mar-18	Apr-18	May-18	Jun-18	Jul-18	Aug-18	Sep-18	Oct-18	Nov-18	Dec-18	Year to Date Monthly Average	
													Quantity	%
Non-Violations	616	585	642	537	642	541	457	485	408	421	301	430	505	94%
Violations	35	42	46	37	33	28	9	27	45	52	34	31	35	6%
<b>Total:</b>	<b>651</b>	<b>627</b>	<b>688</b>	<b>574</b>	<b>675</b>	<b>569</b>	<b>466</b>	<b>512</b>	<b>453</b>	<b>473</b>	<b>335</b>	<b>461</b>	<b>540</b>	<b>100%</b>
<b>Violations</b>														
Uncontrollable Non-Issued	14	16	20	23	13	13	6	17	30	31	18	10	18	50%
Controllable Non-Issued	1	0	3	1	4	1	1	2	2	0	1	3	2	5%
Citations	20	26	23	13	16	14	2	8	13	21	15	18	16	45%
<b>Total:</b>	<b>35</b>	<b>42</b>	<b>46</b>	<b>37</b>	<b>33</b>	<b>28</b>	<b>9</b>	<b>27</b>	<b>45</b>	<b>52</b>	<b>34</b>	<b>31</b>	<b>35</b>	<b>55%</b>
<b>Non-Violations</b>														
Emergency Vehicle Non-Issuable	2	1	0	2	3	1	1	0	5	0	1	2	2	0%
Emergency Vehicle PD	0	0	0	0	0	0	0	0	0	0	0	1	1	0%
Intersection Control in Progress-PD	0	0	0	0	0	0	0	0	0	0	0	0	0	0%
Gate Down/ No Train	0	0	0	0	0	0	0	0	0	0	0	0	0	0%
No Violation Occurred	487	456	499	402	494	403	334	352	271	241	161	248	362	68%
Rear Axle Activation	0	3	2	0	1	0	1	0	1	0	0	0	2	0%
Right Turn- No Violation	0	0	0	0	0	0	0	0	0	0	0	0	0	0%
Test Shot	127	124	141	133	144	137	121	133	123	122	111	114	128	24%
Train Activation	0	0	0	0	0	0	0	0	8	58	28	65	40	7%
Amber Time Low	0	0	0	0	0	0	0	0	0	0	0	0	0	0%
Vehicle Stopped- PD	0	1	0	0	0	0	0	0	0	0	0	0	1	0%
<b>Total:</b>	<b>616</b>	<b>585</b>	<b>642</b>	<b>537</b>	<b>642</b>	<b>541</b>	<b>457</b>	<b>485</b>	<b>408</b>	<b>421</b>	<b>301</b>	<b>430</b>	<b>535</b>	<b>100%</b>
<b>Uncontrollable Non-Issued Violations</b>														
Administrative Dismissal	0	0	0	0	0	0	0	0	0	0	0	0	0	0%
Address/CDL/DOB Match Fail	0	0	0	0	0	0	0	0	0	0	0	0	0	0%
Car Obstructed	1	3	5	3	0	1	0	1	6	4	2	0	3	10%
Conditions Beyond Control	0	0	0	0	0	0	0	0	0	0	0	0	0	0%
Driver Identity Unclear	1	3	0	0	0	0	0	0	0	3	0	0	2	8%
Driver Obstructed	0	0	0	2	1	1	0	1	1	1	1	0	1	4%
Exposed	0	0	0	0	0	0	0	0	0	0	0	0	0	0%
Emergency Vehicle Issue	1	0	1	0	1	0	0	1	1	1	0	2	1	4%
Glare on Plate	1	1	0	3	1	2	0	1	4	2	0	1	2	6%
Glare on Windshield	0	0	0	1	0	1	0	1	0	1	0	2	1	4%
Illegible Plate	1	1	0	0	0	0	0	1	0	1	2	0	1	4%
Interest of Justice- PD	0	0	0	0	0	0	0	0	0	0	0	0	0	0%
Image Quality- PD	0	0	0	1	0	0	0	0	0	0	0	0	1	3%
Issuance Criteria Not Met- PD	0	0	0	0	0	0	0	0	0	1	0	0	1	3%
No Warning Sign	0	0	0	0	0	0	0	0	0	0	0	0	0	0%
No Plate	6	4	9	6	3	4	5	7	10	10	9	3	6	22%
No Speed Captured	0	0	0	0	0	0	0	0	0	0	0	0	0	0%
Obstruction In Photo- PD	2	2	1	4	1	1	0	1	1	0	0	0	2	6%
Out of State	0	1	0	0	0	1	1	0	1	0	1	0	1	3%
Plate Obstructed	1	1	1	3	6	2	0	2	3	6	1	0	3	9%
Short Yellow- PD	0	0	0	0	0	0	0	0	0	0	0	0	0	0%
Third Party Damage	0	0	0	0	0	0	0	0	0	0	0	0	0	0%
TSB Expired	0	0	0	0	0	0	0	1	3	1	0	0	2	6%
TSB No Hit	0	0	3	0	0	0	0	0	0	0	2	2	2	8%
<b>Total:</b>	<b>14</b>	<b>16</b>	<b>20</b>	<b>23</b>	<b>13</b>	<b>13</b>	<b>6</b>	<b>17</b>	<b>30</b>	<b>31</b>	<b>18</b>	<b>10</b>	<b>29</b>	<b>100%</b>
<b>Controllable Non-Issued Violations</b>														
Conduent Expire	0	0	0	0	0	0	0	0	0	0	0	0	0	0%
Clarity of Plate	0	0	0	0	1	0	0	0	0	0	0	0	1	19%
Clarity of Driver	0	0	0	0	0	0	0	0	0	0	0	0	0	0%
Dark Interior	1	0	1	1	2	0	1	1	2	0	1	2	1	25%
Data Box Related- PD	0	0	0	0	0	0	0	0	0	0	0	0	0	0%
Data Box Data Error- PD	0	0	0	0	0	0	0	0	0	0	0	0	0	0%
Data Entry Error	0	0	1	0	1	0	0	1	0	0	0	1	1	19%
Exposed	0	0	0	0	0	0	0	0	0	0	0	0	0	0%
Equipment Malfunction	0	0	0	0	0	1	0	0	0	0	0	0	1	19%
Framing- PD	0	0	0	0	0	0	0	0	0	0	0	0	0	0%
Framing of Car	0	0	1	0	0	0	0	0	0	0	0	0	1	19%
Framing of Driver	0	0	0	0	0	0	0	0	0	0	0	0	0	0%
Operator Error	0	0	0	0	0	0	0	0	0	0	0	0	0	0%
Framing of Plate	0	0	0	0	0	0	0	0	0	0	0	0	0	0%
Reject Expired	0	0	0	0	0	0	0	0	0	0	0	0	0	0%
Speed Not Determined	0	0	0	0	0	0	0	0	0	0	0	0	0	0%
<b>Total:</b>	<b>1</b>	<b>0</b>	<b>3</b>	<b>1</b>	<b>4</b>	<b>1</b>	<b>1</b>	<b>2</b>	<b>2</b>	<b>0</b>	<b>1</b>	<b>3</b>	<b>5</b>	<b>100%</b>
<b>Summary Metrics</b>														
Daily Average Vehicle Passes	0	0	0	0	0	0	0	0	0	0	0	0	0	0
Average Issued Speed	16	17	18	17	17	16	17	17	17	17	16	15	17	17
Average Issued Red Seconds	64.8	15.4	28.3	154.4	101.9	47.5	115.4	16.2	47.1	29.7	10.4	327.3	79.9	79.9
Citation / Violation Issuance Rate	57%	62%	50%	35%	48%	50%	22%	30%	29%	40%	44%	58%	44%	44%
Controllable Issuance Rate	95%	100%	88%	93%	80%	93%	67%	80%	87%	100%	94%	86%	89%	89%



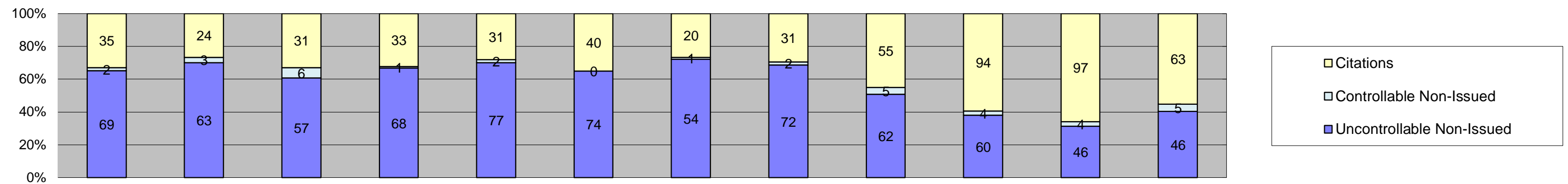
Los Angeles County MTA Expo Line  
 Approach Summary Report  
 Location 5119: WB to SB Exposition @ Denker



Events	Jan-18	Feb-18	Mar-18	Apr-18	May-18	Jun-18	Jul-18	Aug-18	Sep-18	Oct-18	Nov-18	Dec-18	Year to Date Monthly Average	
													Quantity	%
Non-Violations	372	347	399	404	396	407	376	382	356	396	335	344	376	86%
Violations	56	50	62	72	66	39	32	89	58	90	63	53	61	14%
<b>Total:</b>	<b>428</b>	<b>397</b>	<b>461</b>	<b>476</b>	<b>462</b>	<b>446</b>	<b>408</b>	<b>471</b>	<b>414</b>	<b>486</b>	<b>398</b>	<b>397</b>	<b>437</b>	<b>100%</b>
<b>Violations</b>														
Uncontrollable Non-Issued	20	21	25	27	21	18	21	37	26	30	27	21	25	40%
Controllable Non-Issued	2	2	3	2	4	1	0	2	2	0	2	2	2	4%
Citations	34	27	34	43	41	20	11	50	30	60	34	30	35	56%
<b>Total:</b>	<b>56</b>	<b>50</b>	<b>62</b>	<b>72</b>	<b>66</b>	<b>39</b>	<b>32</b>	<b>89</b>	<b>58</b>	<b>90</b>	<b>63</b>	<b>53</b>	<b>61</b>	<b>44%</b>
<b>Non-Violations</b>														
Emergency Vehicle Non-Issuable	1	0	0	3	5	1	2	1	0	2	0	2	2	1%
Emergency Vehicle PD	0	0	0	0	0	0	1	0	0	0	0	0	1	0%
Intersection Control in Progress-PD	0	0	0	0	0	0	0	0	0	0	0	0	0	0%
Gate Down/ No Train	0	0	0	0	0	0	0	0	0	0	0	0	0	0%
No Violation Occurred	217	207	242	251	230	235	229	231	198	176	136	135	207	51%
Rear Axle Activation	12	12	13	18	9	8	8	13	13	16	16	15	13	3%
Right Turn- No Violation	0	0	0	0	0	0	0	0	0	0	0	0	0	0%
Test Shot	142	128	144	132	152	163	136	137	139	143	133	133	140	34%
Train Activation	0	0	0	0	0	0	0	0	6	59	50	59	44	11%
Amber Time Low	0	0	0	0	0	0	0	0	0	0	0	0	0	0%
Vehicle Stopped- PD	0	0	0	0	0	0	0	0	0	0	0	0	0	0%
<b>Total:</b>	<b>372</b>	<b>347</b>	<b>399</b>	<b>404</b>	<b>396</b>	<b>407</b>	<b>376</b>	<b>382</b>	<b>356</b>	<b>396</b>	<b>335</b>	<b>344</b>	<b>407</b>	<b>100%</b>
<b>Uncontrollable Non-Issued Violations</b>														
Administrative Dismissal	0	0	0	0	0	0	0	0	0	0	0	0	0	0%
Address/CDL/DOB Match Fail	0	0	0	0	0	0	0	0	0	0	0	0	0	0%
Car Obstructed	0	0	0	2	0	0	0	1	0	1	1	0	1	4%
Conditions Beyond Control	0	0	0	0	0	0	0	0	0	0	0	0	0	0%
Driver Identity Unclear	2	0	1	0	1	0	0	0	0	2	0	0	2	4%
Driver Obstructed	1	0	0	0	0	0	0	1	0	0	1	1	1	3%
Exposed	0	0	0	0	0	0	0	0	0	0	0	0	0	0%
Emergency Vehicle Issue	2	2	1	3	0	2	0	2	5	3	2	1	2	7%
Glare on Plate	2	7	5	12	6	6	6	9	10	3	8	6	7	20%
Glare on Windshield	0	0	0	0	0	0	0	0	0	0	0	0	0	0%
Illegible Plate	1	0	0	1	0	0	1	1	0	3	0	0	1	4%
Interest of Justice- PD	0	0	0	0	0	0	0	0	0	0	0	0	0	0%
Image Quality- PD	0	0	0	0	0	0	0	0	0	0	1	0	1	3%
Issuance Criteria Not Met- PD	0	0	0	0	0	0	0	0	0	0	0	0	0	0%
No Warning Sign	0	0	0	0	0	0	0	0	0	0	0	0	0	0%
No Plate	9	8	14	8	13	10	12	17	10	16	10	6	11	33%
No Speed Captured	0	0	0	0	0	0	0	0	0	0	0	0	0	0%
Obstruction In Photo- PD	1	3	2	0	0	0	0	1	0	0	0	2	2	5%
Out of State	0	0	0	0	0	0	2	0	0	1	1	1	1	4%
Plate Obstructed	2	1	1	1	1	0	0	5	1	1	0	0	2	5%
Short Yellow- PD	0	0	0	0	0	0	0	0	0	0	0	0	0	0%
Third Party Damage	0	0	0	0	0	0	0	0	0	0	0	0	0	0%
TSB Epired	0	0	0	0	0	0	0	0	0	0	0	0	0	0%
TSB No Hit	0	0	1	0	0	0	0	0	0	0	3	4	3	8%
<b>Total:</b>	<b>20</b>	<b>21</b>	<b>25</b>	<b>27</b>	<b>21</b>	<b>18</b>	<b>21</b>	<b>37</b>	<b>26</b>	<b>30</b>	<b>27</b>	<b>21</b>	<b>34</b>	<b>100%</b>
<b>Controllable Non-Issued Violations</b>														
Conduent Expire	0	0	0	0	0	0	0	0	0	0	0	0	0	0%
Clarity of Plate	0	0	0	0	0	0	0	0	0	0	0	0	0	0%
Clarity of Driver	0	0	0	0	0	0	0	0	0	0	0	0	0	0%
Dark Interior	1	2	2	1	1	0	0	1	1	0	2	2	1	25%
Data Box Related- PD	0	0	0	0	0	0	0	0	0	0	0	0	0	0%
Data Box Data Error- PD	0	0	0	0	0	0	0	0	0	0	0	0	0	0%
Data Entry Error	0	0	0	0	0	0	0	1	0	0	0	0	1	17%
Exposed	0	0	0	0	0	0	0	0	0	0	0	0	0	0%
Equipment Malfunction	0	0	0	0	0	0	0	0	0	0	0	0	0	0%
Framing- PD	0	0	0	0	0	0	0	0	0	0	0	0	0	0%
Framing of Car	0	0	0	1	1	1	0	0	0	0	0	0	1	17%
Framing of Driver	0	0	0	0	0	0	0	0	0	0	0	0	0	0%
Operator Error	0	0	0	0	0	0	0	0	0	0	0	0	0	0%
Framing of Plate	0	0	0	0	0	0	0	0	0	0	0	0	0	0%
Reject Expired	0	0	0	0	0	0	0	0	1	0	0	0	1	17%
Speed Not Determined	1	0	1	0	2	0	0	0	0	0	0	0	1	23%
<b>Total:</b>	<b>2</b>	<b>2</b>	<b>3</b>	<b>2</b>	<b>4</b>	<b>1</b>	<b>0</b>	<b>2</b>	<b>2</b>	<b>0</b>	<b>2</b>	<b>2</b>	<b>6</b>	<b>100%</b>
<b>Summary Metrics</b>														
Daily Average Vehicle Passes	0	0	0	0	0	0	0	0	0	0	0	0	0	0
Average Issued Speed	18	17	17	18	19	18	18	17	17	16	17	17	17	17
Average Issued Red Seconds	2.7	11.5	7.6	5.4	16.0	28.3	38.1	14.5	6.2	18.1	7.9	18.5	14.6	14.6
Citation / Violation Issuance Rate	61%	54%	55%	60%	62%	51%	34%	56%	52%	67%	54%	57%	55%	55%
Controllable Issuance Rate	94%	93%	92%	96%	91%	95%	100%	96%	94%	100%	94%	94%	95%	95%



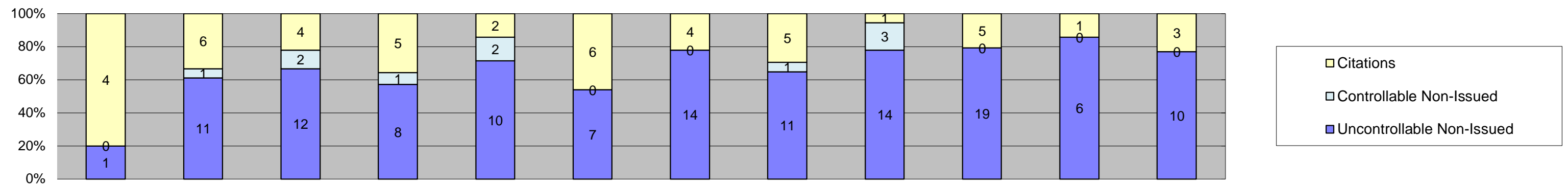
Los Angeles County MTA Expo Line  
 Approach Summary Report  
 Location 5127: EB to NB Exposition @ Western



Events	Jan-18	Feb-18	Mar-18	Apr-18	May-18	Jun-18	Jul-18	Aug-18	Sep-18	Oct-18	Nov-18	Dec-18	Year to Date Monthly Average	
													Quantity	%
Non-Violations	450	402	462	407	401	404	377	422	400	402	384	469	415	79%
Violations	106	90	94	102	110	114	75	105	122	158	147	114	111	21%
<b>Total:</b>	<b>556</b>	<b>492</b>	<b>556</b>	<b>509</b>	<b>511</b>	<b>518</b>	<b>452</b>	<b>527</b>	<b>522</b>	<b>560</b>	<b>531</b>	<b>583</b>	<b>526</b>	<b>100%</b>
<b>Violations</b>														
Uncontrollable Non-Issued	69	63	57	68	77	74	54	72	62	60	46	46	62	56%
Controllable Non-Issued	2	3	6	1	2	0	1	2	5	4	4	5	3	3%
Citations	35	24	31	33	31	40	20	31	55	94	97	63	46	41%
<b>Total:</b>	<b>106</b>	<b>90</b>	<b>94</b>	<b>102</b>	<b>110</b>	<b>114</b>	<b>75</b>	<b>105</b>	<b>122</b>	<b>158</b>	<b>147</b>	<b>114</b>	<b>112</b>	<b>59%</b>
<b>Non-Violations</b>														
Emergency Vehicle Non-Issuable	2	1	1	0	5	3	2	1	2	1	2	2	2	0%
Emergency Vehicle PD	0	0	0	0	0	0	0	0	0	0	0	1	1	0%
Intersection Control in Progress-PD	0	0	0	0	0	0	0	0	0	0	0	0	0	0%
Gate Down/ No Train	0	0	0	0	0	0	0	0	0	0	0	0	0	0%
No Violation Occurred	285	249	305	260	249	265	250	257	197	97	62	142	218	43%
Rear Axle Activation	19	14	13	21	13	12	7	19	36	16	27	9	17	3%
Right Turn- No Violation	0	0	0	0	0	0	0	0	0	0	0	0	0	0%
Test Shot	144	138	143	126	134	124	118	145	146	127	141	122	134	27%
Train Activation	0	0	0	0	0	0	0	0	19	161	152	192	131	26%
Amber Time Low	0	0	0	0	0	0	0	0	0	0	0	0	0	0%
Vehicle Stopped- PD	0	0	0	0	0	0	0	0	0	0	0	1	1	0%
<b>Total:</b>	<b>450</b>	<b>402</b>	<b>462</b>	<b>407</b>	<b>401</b>	<b>404</b>	<b>377</b>	<b>422</b>	<b>400</b>	<b>402</b>	<b>384</b>	<b>469</b>	<b>504</b>	<b>100%</b>
<b>Uncontrollable Non-Issued Violations</b>														
Administrative Dismissal	0	0	0	0	0	0	0	1	0	0	0	0	1	1%
Address/CDL/DOB Match Fail	0	0	0	0	0	0	0	0	0	0	0	0	0	0%
Car Obstructed	1	0	0	0	1	1	0	0	2	5	3	2	2	2%
Conditions Beyond Control	0	0	0	0	0	0	0	0	0	0	0	0	0	0%
Driver Identity Unclear	4	4	0	0	1	0	0	0	3	7	1	0	3	4%
Driver Obstructed	0	2	0	0	0	3	0	0	2	2	0	1	2	2%
Exposed	0	0	0	0	0	0	0	0	0	0	0	0	0	0%
Emergency Vehicle Issue	0	0	0	0	0	0	0	1	1	0	1	0	1	1%
Glare on Plate	39	34	24	41	48	41	32	32	13	2	9	11	27	32%
Glare on Windshield	0	1	0	2	0	0	0	0	0	0	4	9	4	5%
Illegible Plate	0	0	0	0	1	0	1	2	0	2	1	2	2	2%
Interest of Justice- PD	0	1	0	0	0	0	0	0	0	0	0	0	1	1%
Image Quality- PD	0	0	0	0	0	0	0	0	0	0	3	0	3	3%
Issuance Criteria Not Met- PD	0	0	0	0	0	0	0	0	0	1	0	0	1	1%
No Warning Sign	0	0	0	0	0	0	0	0	0	0	0	0	0	0%
No Plate	16	19	24	19	23	24	20	30	27	34	21	12	22	26%
No Speed Captured	0	0	0	0	0	0	0	0	0	0	0	0	0	0%
Obstruction In Photo- PD	1	0	0	1	1	1	0	3	2	3	0	0	2	2%
Out of State	2	0	1	0	1	1	0	1	1	3	0	2	2	2%
Plate Obstructed	6	2	5	5	1	3	1	2	4	1	1	1	3	3%
Short Yellow- PD	0	0	0	0	0	0	0	0	0	0	0	0	0	0%
Third Party Damage	0	0	0	0	0	0	0	0	0	0	0	0	0	0%
TSB Expired	0	0	0	0	0	0	0	0	7	0	0	0	7	8%
TSB No Hit	0	0	3	0	0	0	0	0	0	0	2	6	4	4%
<b>Total:</b>	<b>69</b>	<b>63</b>	<b>57</b>	<b>68</b>	<b>77</b>	<b>74</b>	<b>54</b>	<b>72</b>	<b>62</b>	<b>60</b>	<b>46</b>	<b>46</b>	<b>86</b>	<b>100%</b>
<b>Controllable Non-Issued Violations</b>														
Conduent Expire	0	0	0	0	0	0	0	0	0	0	0	0	0	0%
Clarity of Plate	0	0	0	0	0	0	0	0	0	0	0	0	0	0%
Clarity of Driver	0	0	0	0	0	0	0	0	0	0	0	0	0	0%
Dark Interior	0	1	0	0	1	0	0	0	3	3	2	4	2	32%
Data Box Related- PD	0	0	0	0	0	0	0	0	0	0	0	0	0	0%
Data Box Data Error- PD	0	0	0	0	0	0	0	0	0	0	0	0	0	0%
Data Entry Error	1	2	5	0	0	0	0	2	1	0	1	1	2	26%
Exposed	0	0	0	0	0	0	0	0	0	0	0	0	0	0%
Equipment Malfunction	0	0	0	0	0	0	0	0	1	1	1	0	1	14%
Framing- PD	0	0	0	0	0	0	0	0	0	0	0	0	0	0%
Framing of Car	0	0	0	1	1	0	1	0	0	0	0	0	1	14%
Framing of Driver	0	0	0	0	0	0	0	0	0	0	0	0	0	0%
Operator Error	0	0	0	0	0	0	0	0	0	0	0	0	0	0%
Framing of Plate	0	0	0	0	0	0	0	0	0	0	0	0	0	0%
Reject Expired	0	0	0	0	0	0	0	0	0	0	0	0	0	0%
Speed Not Determined	1	0	1	0	0	0	0	0	0	0	0	0	1	14%
<b>Total:</b>	<b>2</b>	<b>3</b>	<b>6</b>	<b>1</b>	<b>2</b>	<b>0</b>	<b>1</b>	<b>2</b>	<b>5</b>	<b>4</b>	<b>4</b>	<b>5</b>	<b>7</b>	<b>100%</b>
<b>Summary Metrics</b>														
Daily Average Vehicle Passes	0	0	0	0	0	0	0	0	0	0	0	0	0	0
Average Issued Speed	19	20	19	20	20	19	20	19	19	19	19	18	19	19
Average Issued Red Seconds	0.6	0.3	0.4	0.3	0.3	0.3	0.5	0.4	2.8	0.5	0.4	0.4	0.6	0.6
Citation / Violation Issuance Rate	33%	27%	33%	32%	28%	35%	27%	30%	45%	59%	66%	55%	39%	39%
Controllable Issuance Rate	95%	89%	84%	97%	94%	100%	95%	94%	92%	96%	96%	93%	94%	94%



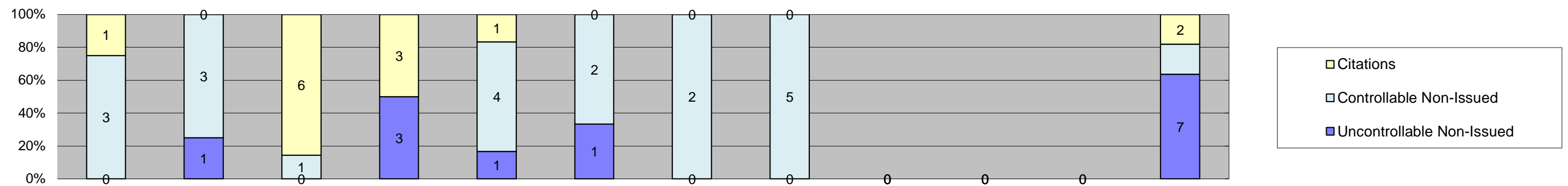
Los Angeles County MTA Expo Line  
 Approach Summary Report  
 Location 5129: WB to SB Exposition @ Western



Events	Jan-18	Feb-18	Mar-18	Apr-18	May-18	Jun-18	Jul-18	Aug-18	Sep-18	Oct-18	Nov-18	Dec-18	Year to Date Monthly Average	
	Quantity												Quantity	%
Non-Violations	674	690	677	661	692	610	529	591	563	548	481	904	635	98%
Violations	5	18	18	14	14	13	18	17	18	24	7	13	15	2%
<b>Total:</b>	<b>679</b>	<b>708</b>	<b>695</b>	<b>675</b>	<b>706</b>	<b>623</b>	<b>547</b>	<b>608</b>	<b>581</b>	<b>572</b>	<b>488</b>	<b>917</b>	<b>650</b>	<b>100%</b>
<b>Violations</b>														
Uncontrollable Non-Issued	1	11	12	8	10	7	14	11	14	19	6	10	10	65%
Controllable Non-Issued	0	1	2	1	2	0	0	1	3	0	0	0	2	11%
Citations	4	6	4	5	2	6	4	5	1	5	1	3	4	24%
<b>Total:</b>	<b>5</b>	<b>18</b>	<b>18</b>	<b>14</b>	<b>14</b>	<b>13</b>	<b>18</b>	<b>17</b>	<b>18</b>	<b>24</b>	<b>7</b>	<b>13</b>	<b>16</b>	<b>76%</b>
<b>Non-Violations</b>														
Emergency Vehicle Non-Issuable	0	0	4	0	1	2	1	0	1	0	3	3	2	0%
Emergency Vehicle PD	0	0	0	0	0	0	0	0	0	0	0	0	0	0%
Intersection Control in Progress-PD	0	0	0	0	0	0	0	0	0	0	0	0	0	0%
Gate Down/ No Train	0	0	0	0	0	0	0	0	0	0	0	0	0	0%
No Violation Occurred	499	540	516	509	517	454	380	423	402	280	229	560	442	63%
Rear Axle Activation	18	5	9	10	7	11	11	18	16	9	13	21	12	2%
Right Turn- No Violation	0	0	0	0	0	0	0	0	0	0	0	0	0	0%
Test Shot	156	145	148	142	167	143	137	150	134	138	132	142	145	20%
Train Activation	0	0	0	0	0	0	0	0	10	121	104	178	103	15%
Amber Time Low	0	0	0	0	0	0	0	0	0	0	0	0	0	0%
Vehicle Stopped- PD	1	0	0	0	0	0	0	0	0	0	0	0	1	0%
<b>Total:</b>	<b>674</b>	<b>690</b>	<b>677</b>	<b>661</b>	<b>692</b>	<b>610</b>	<b>529</b>	<b>591</b>	<b>563</b>	<b>548</b>	<b>481</b>	<b>904</b>	<b>706</b>	<b>100%</b>
<b>Uncontrollable Non-Issued Violations</b>														
Administrative Dismissal	0	0	0	0	0	0	0	0	0	0	0	0	0	0%
Address/CDL/DOB Match Fail	0	0	0	0	0	0	0	0	0	0	0	0	0	0%
Car Obstructed	0	0	0	0	0	0	0	0	0	4	0	1	3	12%
Conditions Beyond Control	0	0	0	0	0	0	0	0	0	0	0	0	0	0%
Driver Identity Unclear	0	1	0	0	0	0	0	0	0	0	0	0	1	5%
Driver Obstructed	0	1	0	0	0	0	0	0	0	0	0	0	1	5%
Exposed	0	0	0	0	0	0	0	0	0	0	0	0	0	0%
Emergency Vehicle Issue	0	0	0	0	0	0	0	0	0	0	0	0	0	0%
Glare on Plate	0	1	7	5	6	5	1	1	5	3	1	3	3	17%
Glare on Windshield	0	0	0	0	0	0	0	0	0	0	0	0	0	0%
Illegible Plate	0	0	0	0	0	0	2	0	0	0	0	0	2	10%
Interest of Justice- PD	0	0	0	0	0	0	0	0	0	0	0	0	0	0%
Image Quality- PD	0	0	0	0	0	0	0	0	0	0	0	0	0	0%
Issuance Criteria Not Met- PD	0	0	0	0	0	0	0	0	0	0	0	0	0	0%
No Warning Sign	0	0	0	0	0	0	0	0	0	0	0	0	0	0%
No Plate	1	8	2	2	4	2	10	10	8	11	5	6	6	28%
No Speed Captured	0	0	0	0	0	0	0	0	0	0	0	0	0	0%
Obstruction In Photo- PD	0	0	0	0	0	0	0	0	0	0	0	0	0	0%
Out of State	0	0	1	0	0	0	1	0	0	0	0	0	1	5%
Plate Obstructed	0	0	0	1	0	0	0	0	1	0	0	0	1	5%
Short Yellow- PD	0	0	0	0	0	0	0	0	0	0	0	0	0	0%
Third Party Damage	0	0	0	0	0	0	0	0	0	0	0	0	0	0%
TSB Expired	0	0	0	0	0	0	0	0	0	1	0	0	1	5%
TSB No Hit	0	0	2	0	0	0	0	0	0	0	0	0	2	10%
<b>Total:</b>	<b>1</b>	<b>11</b>	<b>12</b>	<b>8</b>	<b>10</b>	<b>7</b>	<b>14</b>	<b>11</b>	<b>14</b>	<b>19</b>	<b>6</b>	<b>10</b>	<b>21</b>	<b>100%</b>
<b>Controllable Non-Issued Violations</b>														
Conduent Expire	0	0	0	0	0	0	0	0	0	0	0	0	0	0%
Clarity of Plate	0	0	0	0	0	0	0	0	0	0	0	0	0	0%
Clarity of Driver	0	0	0	0	0	0	0	0	0	0	0	0	0	0%
Dark Interior	0	0	1	0	0	0	0	0	0	0	0	0	1	30%
Data Box Related- PD	0	0	0	0	0	0	0	0	0	0	0	0	0	0%
Data Box Data Error- PD	0	0	0	0	0	0	0	0	0	0	0	0	0	0%
Data Entry Error	0	1	1	1	1	0	0	1	3	0	0	0	1	40%
Exposed	0	0	0	0	0	0	0	0	0	0	0	0	0	0%
Equipment Malfunction	0	0	0	0	0	0	0	0	0	0	0	0	0	0%
Framing- PD	0	0	0	0	0	0	0	0	0	0	0	0	0	0%
Framing of Car	0	0	0	0	1	0	0	0	0	0	0	0	1	30%
Framing of Driver	0	0	0	0	0	0	0	0	0	0	0	0	0	0%
Operator Error	0	0	0	0	0	0	0	0	0	0	0	0	0	0%
Framing of Plate	0	0	0	0	0	0	0	0	0	0	0	0	0	0%
Reject Expired	0	0	0	0	0	0	0	0	0	0	0	0	0	0%
Speed Not Determined	0	0	0	0	0	0	0	0	0	0	0	0	0	0%
<b>Total:</b>	<b>0</b>	<b>1</b>	<b>2</b>	<b>1</b>	<b>2</b>	<b>0</b>	<b>0</b>	<b>1</b>	<b>3</b>	<b>0</b>	<b>0</b>	<b>0</b>	<b>3</b>	<b>100%</b>
<b>Summary Metrics</b>														
Daily Average Vehicle Passes	0	0	0	0	0	0	0	0	0	0	0	0	0	0
Average Issued Speed	19	23	21	19	16	17	21	20	17	19	23	21	20	20
Average Issued Red Seconds	0.4	109.5	0.7	18.4	0.2	0.7	0.4	0.6	0.7	0.5	0.4	0.3	11.1	11.1
Citation / Violation Issuance Rate	80%	33%	22%	36%	14%	46%	22%	29%	6%	21%	14%	23%	29%	29%
Controllable Issuance Rate	100%	86%	67%	83%	50%	100%	100%	83%	25%	100%	100%	100%	83%	83%



Los Angeles County MTA Expo Line  
 Approach Summary Report  
 Location 5137: EB to SB Exposition @ Crenshaw



Events	Jan-18	Feb-18	Mar-18	Apr-18	May-18	Jun-18	Jul-18	Aug-18	Sep-18	Oct-18	Nov-18	Dec-18	Year to Date	
													Quantity	Monthly Average %
Non-Violations	482	390	479	434	403	253	177	248	37	0	0	366	327	98%
Violations	4	4	7	6	6	3	2	5	0	0	0	11	5	2%
<b>Total:</b>	<b>486</b>	<b>394</b>	<b>486</b>	<b>440</b>	<b>409</b>	<b>256</b>	<b>179</b>	<b>253</b>	<b>37</b>	<b>0</b>	<b>0</b>	<b>377</b>	<b>332</b>	<b>100%</b>
<b>Violations</b>														
Uncontrollable Non-Issued	0	1	0	3	1	1	0	0	0	0	0	7	3	33%
Controllable Non-Issued	3	3	1	0	4	2	2	5	0	0	0	2	3	35%
Citations	1	0	6	3	1	0	0	0	0	0	0	2	3	33%
<b>Total:</b>	<b>4</b>	<b>4</b>	<b>7</b>	<b>6</b>	<b>6</b>	<b>3</b>	<b>2</b>	<b>5</b>	<b>0</b>	<b>0</b>	<b>0</b>	<b>11</b>	<b>8</b>	<b>67%</b>
<b>Non-Violations</b>														
Emergency Vehicle Non-Issuable	0	0	0	0	0	0	0	0	0	0	0	1	1	0%
Emergency Vehicle PD	0	0	0	0	0	0	0	0	0	0	0	0	0	0%
Intersection Control in Progress-PD	0	0	0	0	0	0	0	0	0	0	0	0	0	0%
Gate Down/ No Train	0	0	0	0	0	0	0	0	0	0	0	0	0	0%
No Violation Occurred	460	377	460	411	379	236	164	227	31	0	0	311	306	85%
Rear Axle Activation	0	0	0	0	0	0	0	0	0	0	0	0	0	0%
Right Turn- No Violation	0	0	0	0	0	0	0	0	0	0	0	0	0	0%
Test Shot	22	13	19	23	24	17	13	21	6	0	0	19	18	5%
Train Activation	0	0	0	0	0	0	0	0	0	0	0	35	35	10%
Amber Time Low	0	0	0	0	0	0	0	0	0	0	0	0	0	0%
Vehicle Stopped- PD	0	0	0	0	0	0	0	0	0	0	0	0	0	0%
<b>Total:</b>	<b>482</b>	<b>390</b>	<b>479</b>	<b>434</b>	<b>403</b>	<b>253</b>	<b>177</b>	<b>248</b>	<b>37</b>	<b>0</b>	<b>0</b>	<b>366</b>	<b>359</b>	<b>100%</b>
<b>Uncontrollable Non-Issued Violations</b>														
Administrative Dismissal	0	0	0	0	0	0	0	0	0	0	0	0	0	0%
Address/CDL/DOB Match Fail	0	0	0	0	0	0	0	0	0	0	0	0	0	0%
Car Obstructed	0	0	0	0	0	0	0	0	0	0	0	1	1	12%
Conditions Beyond Control	0	0	0	0	0	0	0	0	0	0	0	0	0	0%
Driver Identity Unclear	0	0	0	0	0	0	0	0	0	0	0	0	0	0%
Driver Obstructed	0	0	0	0	0	0	0	0	0	0	0	0	0	0%
Exposed	0	0	0	0	0	0	0	0	0	0	0	0	0	0%
Emergency Vehicle Issue	0	0	0	0	0	0	0	0	0	0	0	0	0	0%
Glare on Plate	0	0	0	0	0	0	0	0	0	0	0	0	0	0%
Glare on Windshield	0	0	0	0	0	0	0	0	0	0	0	1	1	12%
Illegible Plate	0	0	0	0	0	0	0	0	0	0	0	0	0	0%
Interest of Justice- PD	0	0	0	0	0	0	0	0	0	0	0	0	0	0%
Image Quality- PD	0	0	0	0	0	0	0	0	0	0	0	0	0	0%
Issuance Criteria Not Met- PD	0	0	0	0	0	0	0	0	0	0	0	0	0	0%
No Warning Sign	0	0	0	0	0	0	0	0	0	0	0	0	0	0%
No Plate	0	0	0	1	0	1	0	0	0	0	0	2	1	16%
No Speed Captured	0	0	0	0	0	0	0	0	0	0	0	0	0	0%
Obstruction In Photo- PD	0	0	0	1	0	0	0	0	0	0	0	0	1	12%
Out of State	0	1	0	1	0	0	0	0	0	0	0	1	1	12%
Plate Obstructed	0	0	0	0	1	0	0	0	0	0	0	0	1	12%
Short Yellow- PD	0	0	0	0	0	0	0	0	0	0	0	0	0	0%
Third Party Damage	0	0	0	0	0	0	0	0	0	0	0	0	0	0%
TSB Expired	0	0	0	0	0	0	0	0	0	0	0	0	0	0%
TSB No Hit	0	0	0	0	0	0	0	0	0	0	0	2	2	24%
<b>Total:</b>	<b>0</b>	<b>1</b>	<b>0</b>	<b>3</b>	<b>1</b>	<b>1</b>	<b>0</b>	<b>0</b>	<b>0</b>	<b>0</b>	<b>0</b>	<b>7</b>	<b>8</b>	<b>100%</b>
<b>Controllable Non-Issued Violations</b>														
Conduent Expire	0	0	0	0	0	0	0	0	0	0	0	0	0	0%
Clarity of Plate	0	0	0	0	0	0	0	0	0	0	0	0	0	0%
Clarity of Driver	0	0	0	0	0	0	0	0	0	0	0	0	0	0%
Dark Interior	0	0	0	0	0	0	0	0	0	0	0	0	0	0%
Data Box Related- PD	0	0	0	0	0	0	0	0	0	0	0	0	0	0%
Data Box Data Error- PD	0	0	0	0	2	0	0	0	0	0	0	0	2	25%
Data Entry Error	3	3	0	0	2	0	1	2	0	0	0	0	2	27%
Exposed	0	0	0	0	0	0	0	0	0	0	0	0	0	0%
Equipment Malfunction	0	0	0	0	0	2	0	3	0	0	0	0	3	31%
Framing- PD	0	0	0	0	0	0	0	0	0	0	0	0	0	0%
Framing of Car	0	0	1	0	0	0	1	0	0	0	0	2	1	17%
Framing of Driver	0	0	0	0	0	0	0	0	0	0	0	0	0	0%
Operator Error	0	0	0	0	0	0	0	0	0	0	0	0	0	0%
Framing of Plate	0	0	0	0	0	0	0	0	0	0	0	0	0	0%
Reject Expired	0	0	0	0	0	0	0	0	0	0	0	0	0	0%
Speed Not Determined	0	0	0	0	0	0	0	0	0	0	0	0	0	0%
<b>Total:</b>	<b>3</b>	<b>3</b>	<b>1</b>	<b>0</b>	<b>4</b>	<b>2</b>	<b>2</b>	<b>5</b>	<b>0</b>	<b>0</b>	<b>0</b>	<b>2</b>	<b>8</b>	<b>100%</b>
<b>Summary Metrics</b>														
Daily Average Vehicle Passes	0	0	0	0	0	0	0	0	0	0	0	0	0	0
Average Issued Speed	20	0	24	21	15	0	0	14	0	0	0	18	19	
Average Issued Red Seconds	47.6	0.0	9.9	36.7	5.9	0.0	0.0	0.2	0.0	0.0	0.0	28.0	21.4	
Citation / Violation Issuance Rate	25%	0%	86%	50%	17%	0%	0%	0%	0%	0%	0%	18%	39%	
Controllable Issuance Rate	25%	0%	86%	100%	20%	0%	0%	0%	0%	0%	0%	50%	56%	



**Los Angeles County MTA Expo Line  
Monthly Citation Yield - By Location  
December 2018**

Direction	Location	Code	Movement	Days of Enforcement	Events	Violations	Citations	Yield*
SB to EB	Flower @ Washintgon	5008	Left	31	477	31	19	0.61
SB to WB	Flower @ USC Trade Tech	5018	Left	31	3,182	7	2	0.06
SB to EB	Flower @ 23rd	5028	Left	31	969	2	2	0.06
SB to EB	Flower @ Adams	5038	Left	31	486	10	2	0.06
SB to EB	Flower @ 28th	5048	Left	31	303	152	79	2.55
SB to EB	Flower @ 30th	5058	Left	31	902	8	4	0.13
SB to EB	Flower @ Jefferson	5068	Left	31	1,216	24	14	0.45
EB to NB	Exposition @ Watt	5077	Left	31	191	8	1	0.03
WB to SB	Exposition @ Bill Robertson	5079	Left	31	289	12	2	0.06
EB to NB	Exposition @ Vermont	5087	Left	31	1,001	145	22	0.71
WB to SB	Exposition @ Vermont	5089	Left	31	615	40	14	0.45
EB to NB	Exposition @ Raymond	5097	Left	31	301	9	4	0.13
EB to NB	Exposition @ Normandie	5107	Left	31	525	157	73	2.35
WB to SB	Exposition @ Normandie	5109	Left	31	857	58	18	0.58
EB to NB	Exposition @ Halldale	5117	Left	31	461	31	18	0.58
WB to SB	Exposition @ Denker	5119	Left	31	397	53	30	0.97
EB to NB	Exposition @ Western	5127	Left	31	583	114	63	2.03
WB to SB	Exposition @ Western	5129	Left	31	917	13	3	0.10
EB to SB	Exposition @ Crenshaw	5137	Right	31	377	11	2	0.06
<b>Totals</b>				<b>31</b>	<b>14,049</b>	<b>885</b>	<b>372</b>	<b>12.00</b>

\*Yield is the number of citations issued per day of enforcement.