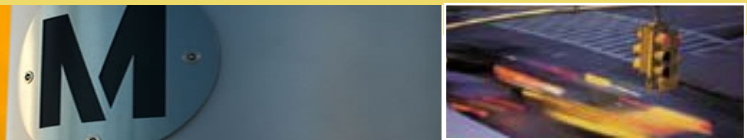
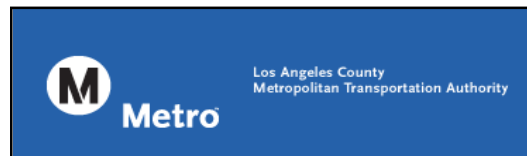


Riding Metro



Gold Line Monthly Report



December 2010



Prepared by: ACS Transportation Solutions
Confidential

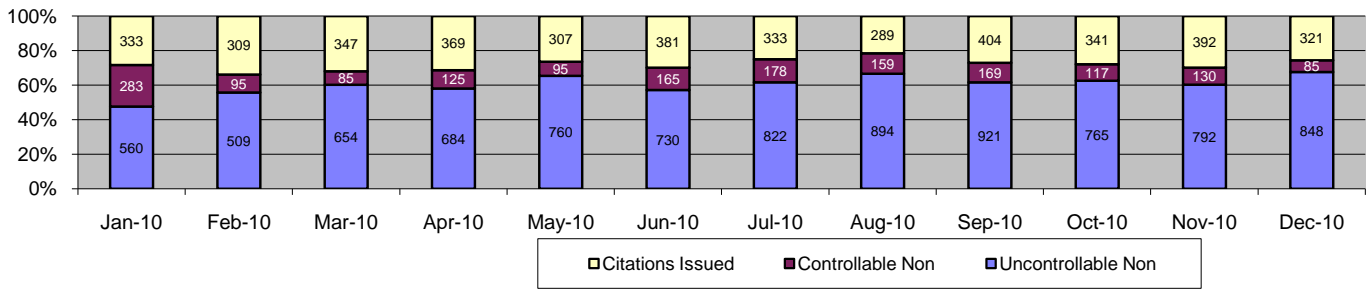
Table of Contents

Report Title	Page
<i>Approach Summary Report, All Locations.....</i>	3
<i>Approach Summary Report, Location 4007: EB to NB 3rd @ Civic Center.....</i>	4
<i>Approach Summary Report, Location 4009: WB to SB 3rd @ La Verne.....</i>	5
<i>Approach Summary Report, Location 4017: EB to NB 3rd @ Mednik.....</i>	6
<i>Approach Summary Report, Location 4019: WB to SB 3rd @ Mednik.....</i>	7
<i>Approach Summary Report, Location 4027: EB to NB 3rd @ Arizona.....</i>	8
<i>Approach Summary Report, Location 4029: WB to SB 3rd @ Arizona.....</i>	9
<i>Approach Summary Report, Location 4037: EB to NB 3rd @ McDonnell.....</i>	10
<i>Approach Summary Report, Location 4039: WB to SB 3rd @ McDonnell.....</i>	11
<i>Approach Summary Report, Location 4047: EB to NB 3rd @ Ford.....</i>	12
<i>Approach Summary Report, Location 4049: WB to SB 3rd @ Ford.....</i>	13
<i>Approach Summary Report, Location 4057: EB to NB 3rd @ Eastern.....</i>	14
<i>Approach Summary Report, Location 4059: WB to SB 3rd @ Eastern.....</i>	15
<i>Approach Summary Report, Location 4069: WB to SB 3rd @ Downey.....</i>	16
<i>Approach Summary Report, Location 4077: EB to NB 3rd @ Gage.....</i>	17
<i>Approach Summary Report, Location 4079: WB to SB 3rd @ Gage.....</i>	18
<i>Approach Summary Report, Location 4087: EB to NB 1st @ Lorena.....</i>	19
<i>Approach Summary Report, Location 4089: WB to SB 1st @ Lorena.....</i>	20
<i>Approach Summary Report, Location 4097: EB to NB 1st @ Clarence.....</i>	21
<i>Approach Summary Report, Location 4099: WB to SB 1st @ Clarence.....</i>	22
<i>Approach Summary Report, Location 4109: WB to SB 1st @ Utah.....</i>	23
<i>Approach Summary Report, Location 4119: WB to SB 1st @ Anderson.....</i>	24
<i>Approach Summary Report, Location 4127: EB to NB 1st @ Mission.....</i>	25
<i>Approach Summary Report, Location 4129: WB to SB 1st @ Mission.....</i>	26
<i>Customer Service Report.....</i>	27
<i>Daily Citation Yield Report.....</i>	28
<i>Citations by Time (Graph).....</i>	29
<i>Average Red Light Seconds (Graph).....</i>	30
<i>Average Speed (Graph).....</i>	31
<i>Monthly Citation Yield Report.....</i>	32
<i>Disposition Summary Report.....</i>	33
<i>Performance Report.....</i>	34



A xerox Company

Los Angeles County MTA Gold Line Approach Summary Report All Locations



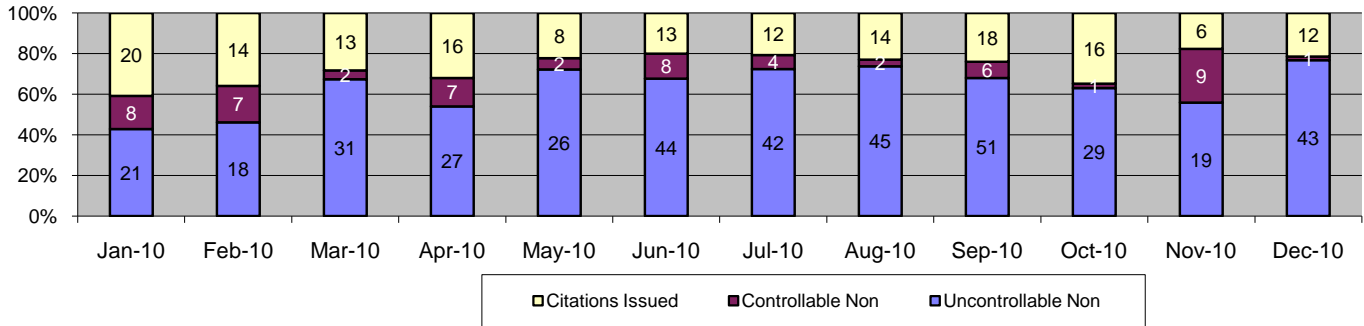
Events	Dec-10		3 Month Average		Year to Date Total		Year to Date Average		2009 Average	
	Quantity	% of Events	Quantity	% of Events	Quantity	% of Events	Quantity	% of Events	Quantity	% of Events
Non Violations	12,889	91%	11,656	90%	143,757	91%	11,980	91%	5,387	93%
Violations	1,254	9%	1,344	10%	14,751	9%	1,229	9%	418	7%
Total Events	14,143	100%	13,000	100%	158,508	100%	13,209	100%	5,805	100%
<i>Violations</i>	<i>Quantity</i>	<i>% of Viol</i>	<i>Quantity</i>	<i>% of Viol</i>	<i>Quantity</i>	<i>% of Viol</i>	<i>Quantity</i>	<i>% of Viol</i>	<i>Quantity</i>	<i>% of Viol</i>
Uncont. Non-Issued Viol	848	68%	826	61%	8,939	61%	745	61%	222	53%
Cont. Non-Issued Viol	85	7%	139	10%	1,686	11%	141	11%	36	9%
Citations	321	26%	379	28%	4,126	28%	344	28%	160	38%
Daily Av. Vehicle Counts	13,423		14,264		181,551		15,129		13,405	
Av. Violation Speed	19.8		19.7		19.9		19.9		16.0	
Av. Issued Speed	19.3		18.6		19.0		19.0		15.6	
Av. Violation Sec.	59.2		56.0		56.9		56.9		48.3	
Av. Issued Sec.	48.1		42.7		48.4		48.4		43.5	
Cal. Days/Enforc. Days	31	31	30	30	365	365	30	30	31	31
Daily Citation Yield	10.35	10.35	12.49	12.49	11.30	11.30	11.30	11.30	5.16	5.16
Cit /Viol. Iss. Rate	26%		28%		28%		28%		38%	
Controllable Iss. Rate	79%		73%		71%		71%		82%	
<i>Non - Violations</i>	<i>Quantity</i>	<i>% Non-Viol</i>	<i>Quantity</i>	<i>% Non-Viol</i>	<i>Quantity</i>	<i>% Non-Viol</i>	<i>Quantity</i>	<i>% Non-Viol</i>	<i>Quantity</i>	<i>% Non-Viol</i>
Rear Axle Violation	0	0%	1	0%	19	0%	2	0%	1	0%
Right Turn	0	0%	0	0%	0	0%	0	0%	0	0%
No Violation Occurred	12,889	100%	11,655	100%	143,738	100%	11,978	100%	5,386	100%
Total Non Violations	12,889	100%	11,656	100%	143,757	100%	11,980	100%	5,387	100%
<i>Uncontrollable Non-Iss</i>	<i>Quantity</i>	<i>% of Un.Non</i>	<i>Quantity</i>	<i>% of Un.Non</i>	<i>Quantity</i>	<i>% of Un.Non</i>	<i>Quantity</i>	<i>% of Un.Non</i>	<i>Quantity</i>	<i>% of Un.Non</i>
No Plate	77	9%	87	11%	1,001	11%	83	11%	27	12%
Out of State Plate	8	1%	12	1%	136	2%	11	2%	10	5%
Glare on Plate	9	1%	9	1%	68	1%	6	1%	0	0%
Illegible Plate	5	1%	11	1%	210	2%	18	2%	13	6%
Plate Obstructed	6	1%	3	0%	52	1%	4	1%	3	1%
Windshield Glare	23	3%	31	4%	395	4%	33	4%	3	1%
Driver Obstructed	45	5%	66	8%	565	6%	47	6%	5	2%
Car Obstructed	160	19%	173	21%	1,656	19%	138	19%	16	7%
Emergency Vehicle	416	49%	354	43%	3,679	41%	307	41%	105	47%
No DMV Match Found	61	7%	72	9%	828	9%	69	9%	29	13%
LASD Expired	0	0%	7	1%	273	3%	23	3%	0	0%
Other	38	4%	1	0%	76	1%	6	1%	11	5%
Total	848	100%	826	100%	8,939	100%	745	100%	222	100%
<i>Controllable Non-Iss</i>	<i>Quantity</i>	<i>% Cont. Non</i>	<i>Quantity</i>	<i>% Cont. Non</i>	<i>Quantity</i>	<i>% Cont. Non</i>	<i>Quantity</i>	<i>% Cont. Non</i>	<i>Quantity</i>	<i>% Cont. Non</i>
Framing of Plate	11	13%	24	17%	263	16%	22	16%	3	8%
Focus / Clarity of Plate	7	8%	5	4%	68	4%	6	4%	0	0%
Dark Interior	19	22%	26	19%	190	11%	16	11%	3	8%
Framing of Driver	17	20%	13	9%	206	12%	17	12%	8	22%
Focus / Clarity of Driver	3	4%	2	1%	22	1%	2	1%	0	0%
Framing of Car	5	6%	23	16%	313	19%	26	19%	6	17%
Data Error	0	0%	1	1%	8	0%	1	0%	0	0%
Exposure	3	4%	2	1%	67	4%	6	4%	2	6%
Equipment Malfunction	0	0%	4	3%	21	1%	2	1%	0	0%
LASD Return	20	24%	39	28%	525	31%	44	31%	14	39%
ACS Expired	0	0%	1	0%	3	0%	0	0%	0	0%
Total	85	100%	139	100%	1,686	100%	141	100%	36	100%



A xerox Company

Los Angeles County MTA Gold Line Approach Summary Report

Location 4007: EB to NB 3rd @ Civic Center

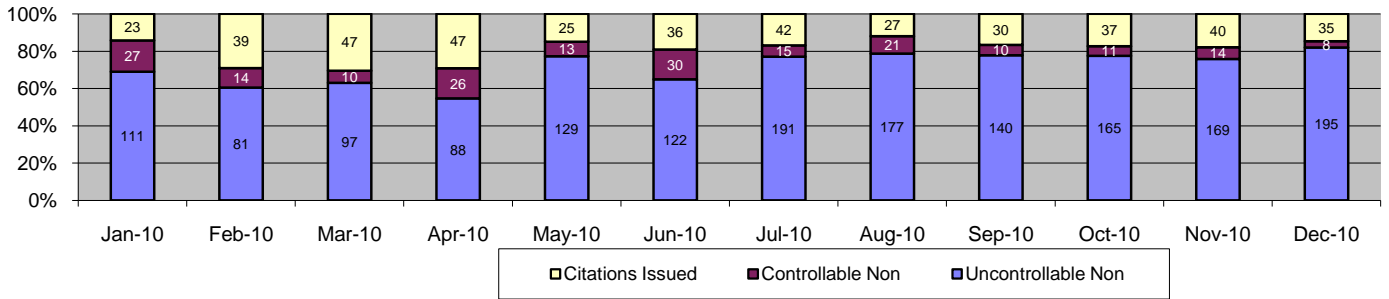


Events	Dec-10		3 Month Average		Year to Date Total		Year to Date Average		2009 Average	
	Quantity	% of Events	Quantity	% of Events	Quantity	% of Events	Quantity	% of Events	Quantity	% of Events
Non Violations	902	94%	1,027	93%	8,925	94%	744	94%	373	96%
Violations	56	6%	52	7%	615	6%	51	6%	16	4%
Total Events	958	100%	1,078	100%	9,540	100%	795	100%	389	100%
<i>Violations</i>	<i>Quantity</i>	<i>% of Viol</i>	<i>Quantity</i>	<i>% of Viol</i>	<i>Quantity</i>	<i>% of Viol</i>	<i>Quantity</i>	<i>% of Viol</i>	<i>Quantity</i>	<i>% of Viol</i>
Uncont. Non-Issued Viol	43	77%	33	64%	396	64%	33	64%	4	25%
Cont. Non-Issued Viol	1	2%	5	10%	57	9%	5	9%	1	6%
Citations	12	21%	13	26%	162	26%	14	26%	11	69%
Daily Av. Vehicle Counts	227		296		3,329		277		256	
Av. Violation Speed	19.0		18.4		18.8		18.8		17.7	
Av. Issued Speed	17.3		18.3		17.6		17.6		17.6	
Av. Violation Sec.	60.4		62.5		61.7		61.7		57.6	
Av. Issued Sec.	44.1		57.4		57.3		57.3		63.2	
Cal. Days/Enforc. Days	31	31	30	30	365	365	30	30	31	31
Daily Citation Yield	0.39	0.39	0.44	0.44	0.44	0.44	0.44	0.44	0.35	0.35
Cit /Viol. Iss. Rate	21%		26%		26%		26%		69%	
Controllable Iss. Rate	92%		74%		74%		74%		92%	
Non - Violations	Dec-10		3 Month Average		Year to Date Total		Year to Date Average		2009 Average	
	Quantity	% Non-Viol	Quantity	% Non-Viol	Quantity	% Non-Viol	Quantity	% Non-Viol	Quantity	% Non-Viol
Rear Axle Violation	0	0%	0	0%	2	0%	0	0%	0	0%
Right Turn	0	0%	0	0%	0	0%	0	0%	0	0%
No Violation Occurred	902	100%	1,027	100%	8,923	100%	744	100%	373	100%
Total Non Violations	902	100%	1,027	100%	8,925	100%	744	100%	373	100%
<i>Uncontrollable Non-Iss</i>	<i>Quantity</i>	<i>% of Un.Non</i>	<i>Quantity</i>	<i>% of Un.Non</i>	<i>Quantity</i>	<i>% of Un.Non</i>	<i>Quantity</i>	<i>% of Un.Non</i>	<i>Quantity</i>	<i>% of Un.Non</i>
No Plate	1	2%	2	7%	28	7%	2	7%	0	0%
Out of State Plate	0	0%	0	1%	7	2%	1	2%	0	0%
Glare on Plate	2	5%	0	0%	5	1%	0	1%	0	0%
Illegible Plate	2	5%	2	7%	41	10%	3	10%	0	0%
Plate Obstructed	0	0%	0	0%	1	0%	0	0%	0	0%
Windshield Glare	1	2%	2	7%	26	7%	2	7%	1	25%
Driver Obstructed	5	12%	6	18%	53	13%	4	13%	0	0%
Car Obstructed	16	37%	13	39%	113	29%	9	29%	0	0%
Emergency Vehicle	8	19%	4	13%	75	19%	6	19%	1	25%
No DMV Match Found	2	5%	2	6%	28	7%	2	7%	2	50%
LASD Expired	0	0%	0	1%	13	3%	1	3%	0	0%
Other	6	14%	0	0%	6	2%	1	2%	0	0%
Total	43	100%	33	100%	396	100%	33	100%	4	100%
<i>Controllable Non-Iss</i>	<i>Quantity</i>	<i>% Cont. Non</i>	<i>Quantity</i>	<i>% Cont. Non</i>	<i>Quantity</i>	<i>% Cont. Non</i>	<i>Quantity</i>	<i>% Cont. Non</i>	<i>Quantity</i>	<i>% Cont. Non</i>
Framing of Plate	0	0%	3	56%	20	35%	2	35%	0	0%
Focus / Clarity of Plate	1	100%	0	6%	10	18%	1	18%	0	0%
Dark Interior	0	0%	1	13%	6	11%	1	11%	0	0%
Framing of Driver	0	0%	1	13%	6	11%	1	11%	0	0%
Focus / Clarity of Driver	0	0%	0	0%	0	0%	0	0%	0	0%
Framing of Car	0	0%	0	0%	8	14%	1	14%	0	0%
Data Error	0	0%	0	0%	0	0%	0	0%	0	0%
Exposure	0	0%	0	0%	0	0%	0	0%	1	100%
Equipment Malfunction	0	0%	0	0%	2	4%	0	4%	0	0%
LASD Return	0	0%	1	13%	5	9%	0	9%	0	0%
ACS Expired	0	0%	0	0%	0	0%	0	0%	0	0%
Total	1	100%	5	100%	57	100%	5	100%	1	100%



A Xerox Company

Los Angeles County MTA Gold Line Approach Summary Report Location 4009: WB to SB 3rd @ La Verne

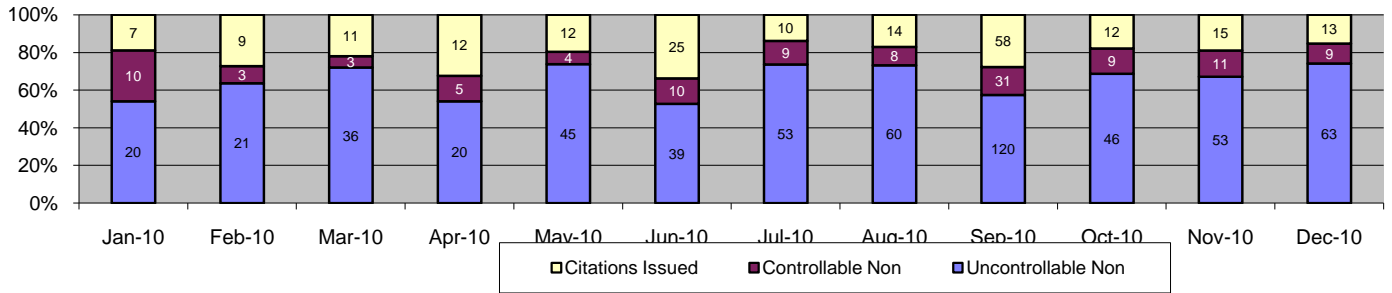


Events	Dec-10		3 Month Average		Year to Date Total		Year to Date Average		2009 Average	
	Quantity	% of Events	Quantity	% of Events	Quantity	% of Events	Quantity	% of Events	Quantity	% of Events
Non Violations	662	74%	347	75%	5,096	69%	425	69%	216	76%
Violations	238	26%	205	27%	2,292	31%	191	31%	67	24%
Total Events	900	100%	552	100%	7,388	100%	616	100%	283	100%
<i>Violations</i>										
	Quantity	% of Viol	Quantity	% of Viol	Quantity	% of Viol	Quantity	% of Viol	Quantity	% of Viol
Uncont. Non-Issued Viol	195	82%	158	77%	1,665	73%	139	73%	44	66%
Cont. Non-Issued Viol	8	3%	12	6%	199	9%	17	9%	5	7%
Citations	35	15%	36	17%	428	19%	36	19%	18	27%
Daily Av. Vehicle Counts	785		809		9,653		804		830	
Av. Violation Speed	17.6		17.7		18.1		18.1		17.6	
Av. Issued Speed	17.0		17.8		17.6		17.6		17.9	
Av. Violation Sec.	63.7		63.2		58.7		58.7		47.8	
Av. Issued Sec.	64.5		41.0		44.3		44.3		43.1	
Cal. Days/Enforc. Days	31	31	30	30	365	365	30	30	31	31
Daily Citation Yield	1.13	1.13	1.18	1.18	1.17	1.17	1.17	1.17	0.58	0.58
Cit/Viol. Iss. Rate	15%		19%		19%		19%		27%	
Controllable Iss. Rate	81%		68%		68%		68%		78%	
<i>Non - Violations</i>										
	Quantity	% Non-Viol	Quantity	% Non-Viol	Quantity	% Non-Viol	Quantity	% Non-Viol	Quantity	% Non-Viol
Rear Axle Violation	0	0%	0	0%	0	0%	0	0%	0	0%
Right Turn	0	0%	0	0%	0	0%	0	0%	0	0%
No Violation Occurred	662	100%	347	100%	5,096	100%	425	100%	216	100%
Total Non Violations	662	100%	347	100%	5,096	100%	425	100%	216	100%
<i>Uncontrollable Non-Iss</i>										
	Quantity	% of Un.Non	Quantity	% of Un.Non	Quantity	% of Un.Non	Quantity	% of Un.Non	Quantity	% of Un.Non
No Plate	14	7%	12	8%	150	9%	13	9%	6	14%
Out of State Plate	0	0%	2	1%	11	1%	1	1%	1	2%
Glare on Plate	0	0%	0	0%	2	0%	0	0%	0	0%
Illegible Plate	1	1%	1	1%	28	2%	2	2%	3	7%
Plate Obstructed	1	1%	0	0%	4	0%	0	0%	0	0%
Windshield Glare	1	1%	2	1%	28	2%	2	2%	0	0%
Driver Obstructed	4	2%	4	3%	53	3%	4	3%	0	0%
Car Obstructed	7	4%	6	4%	65	4%	5	4%	0	0%
Emergency Vehicle	163	84%	125	79%	1,224	74%	102	74%	31	70%
No DMV Match Found	3	2%	6	4%	74	4%	6	4%	3	7%
LASD Expired	0	0%	0	0%	25	2%	2	2%	0	0%
Other	1	1%	0	0%	1	0%	0	0%	0	0%
Total	195	100%	158	100%	1,665	100%	139	100%	44	100%
<i>Controllable Non-Iss</i>										
	Quantity	% Cont. Non	Quantity	% Cont. Non	Quantity	% Cont. Non	Quantity	% Cont. Non	Quantity	% Cont. Non
Framing of Plate	0	0%	1	9%	23	12%	2	12%	0	0%
Focus / Clarity of Plate	0	0%	0	3%	6	3%	1	3%	0	0%
Dark Interior	1	13%	1	9%	12	6%	1	6%	0	0%
Framing of Driver	4	50%	3	26%	65	33%	5	33%	0	0%
Focus / Clarity of Driver	0	0%	0	0%	2	1%	0	1%	0	0%
Framing of Car	1	13%	3	23%	22	11%	2	11%	0	0%
Data Error	0	0%	0	0%	0	0%	0	0%	0	0%
Exposure	0	0%	0	0%	0	0%	0	0%	0	0%
Equipment Malfunction	0	0%	0	0%	0	0%	0	0%	0	0%
LASD Return	2	25%	4	31%	69	35%	6	35%	5	100%
ACS Expired	0	0%	0	0%	0	0%	0	0%	0	0%
Total	8	100%	12	100%	199	100%	17	100%	5	100%



A xerox Company

Los Angeles County MTA Gold Line Approach Summary Report Location 4017: EB to NB 3rd @ Mednik

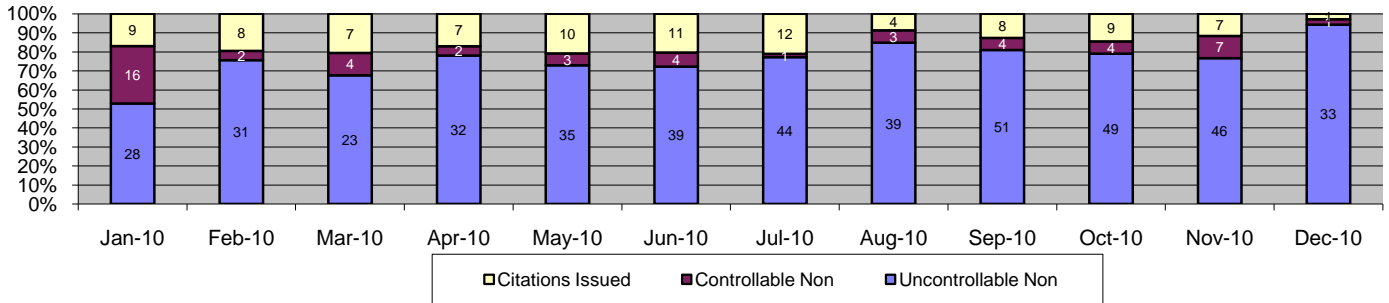


Events	Dec-10		3 Month Average		Year to Date Total		Year to Date Average		2009 Average	
	Quantity	% of Events	Quantity	% of Events	Quantity	% of Events	Quantity	% of Events	Quantity	% of Events
Non Violations	524	86%	606	93%	7,271	89%	606	89%	240	96%
Violations	85	14%	118	8%	886	11%	74	11%	11	4%
Total Events	609	100%	725	100%	8,157	100%	680	100%	251	100%
<i>Violations</i>										
	Quantity	% of Viol	Quantity	% of Viol	Quantity	% of Viol	Quantity	% of Viol	Quantity	% of Viol
Uncont. Non-Issued Viol	63	74%	73	62%	576	65%	48	65%	8	73%
Cont. Non-Issued Viol	9	11%	17	14%	112	13%	9	13%	2	18%
Citations	13	15%	28	24%	198	22%	17	22%	1	9%
Daily Av. Vehicle Counts	756		851		10,076		840		796	
Av. Violation Speed	20.5		21.3		22.1		22.1		18.0	
Av. Issued Speed	23.2		22.7		23.5		23.5		18.0	
Av. Violation Sec.	37.8		37.1		37.0		37.0		96.8	
Av. Issued Sec.	10.2		17.0		18.5		18.5		96.8	
Cal. Days/Enforc. Days	31	31	30	30	365	365	30	30	31	31
Daily Citation Yield	0.42	0.42	0.93	0.93	0.54	0.54	0.54	0.54	0.03	0.03
Cit/Viol. Iss. Rate	15%		22%		22%		22%		9%	
Controllable Iss. Rate	59%		64%		64%		64%		33%	
<i>Non - Violations</i>										
	Quantity	% Non-Viol	Quantity	% Non-Viol	Quantity	% Non-Viol	Quantity	% Non-Viol	Quantity	% Non-Viol
Rear Axle Violation	0	0%	0	0%	1	0%	0	0%	0	0%
Right Turn	0	0%	0	0%	0	0%	0	0%	0	0%
No Violation Occurred	524	100%	606	100%	7,270	100%	606	100%	240	100%
Total Non Violations	524	100%	606	100%	7,271	100%	606	100%	240	100%
<i>Uncontrollable Non-Iss</i>										
	Quantity	% of Un.Non	Quantity	% of Un.Non	Quantity	% of Un.Non	Quantity	% of Un.Non	Quantity	% of Un.Non
No Plate	4	6%	11	15%	72	13%	6	13%	1	13%
Out of State Plate	0	0%	1	1%	6	1%	1	1%	0	0%
Glare on Plate	2	3%	1	2%	6	1%	1	1%	0	0%
Illegible Plate	1	2%	1	1%	10	2%	1	2%	0	0%
Plate Obstructed	0	0%	0	0%	2	0%	0	0%	0	0%
Windshield Glare	2	3%	8	11%	58	10%	5	10%	0	0%
Driver Obstructed	4	6%	10	14%	50	9%	4	9%	0	0%
Car Obstructed	10	16%	16	22%	112	19%	9	19%	0	0%
Emergency Vehicle	35	56%	23	31%	225	39%	19	39%	7	88%
No DMV Match Found	4	6%	3	4%	27	5%	2	5%	0	0%
LASD Expired	0	0%	0	0%	6	1%	1	1%	0	0%
Other	1	2%	0	0%	2	0%	0	0%	0	0%
Total	63	100%	73	100%	576	100%	48	100%	8	100%
<i>Controllable Non-Iss</i>										
	Quantity	% Cont. Non	Quantity	% Cont. Non	Quantity	% Cont. Non	Quantity	% Cont. Non	Quantity	% Cont. Non
Framing of Plate	0	0%	3	18%	15	13%	1	13%	0	0%
Focus / Clarity of Plate	1	11%	0	0%	4	4%	0	4%	0	0%
Dark Interior	4	44%	12	73%	62	55%	5	55%	2	100%
Framing of Driver	0	0%	0	0%	2	2%	0	2%	0	0%
Focus / Clarity of Driver	1	11%	0	2%	3	3%	0	3%	0	0%
Framing of Car	1	11%	1	6%	20	18%	2	18%	0	0%
Data Error	0	0%	0	0%	0	0%	0	0%	0	0%
Exposure	0	0%	0	0%	0	0%	0	0%	0	0%
Equipment Malfunction	0	0%	0	0%	1	1%	0	1%	0	0%
LASD Return	2	22%	0	2%	5	4%	0	4%	0	0%
ACS Expired	0	0%	0	0%	0	0%	0	0%	0	0%
Total	9	100%	17	100%	112	100%	9	100%	2	100%



A xerox Company

Los Angeles County MTA Gold Line Approach Summary Report Location 4019: WB to SB 3rd @ Mednik

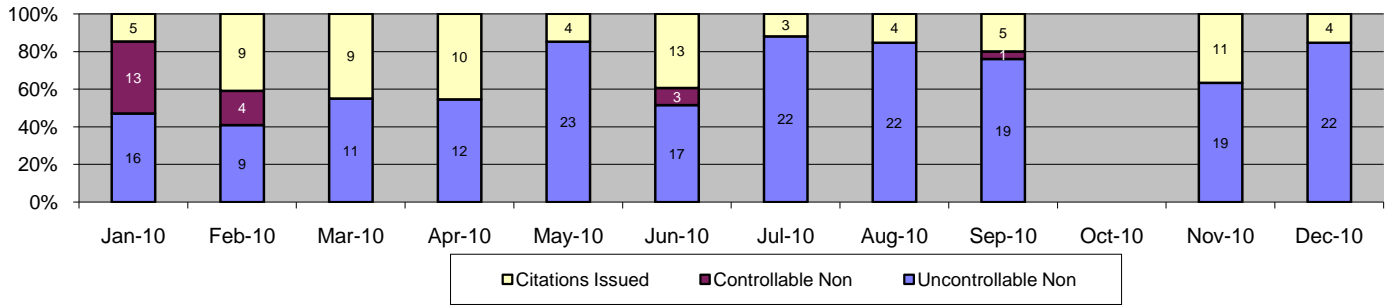


Events	Dec-10		3 Month Average		Year to Date Total		Year to Date Average		2009 Average	
	Quantity	% of Events	Quantity	% of Events	Quantity	% of Events	Quantity	% of Events	Quantity	% of Events
Non Violations	370	91%	346	89%	4,080	87%	340	87%	126	89%
Violations	35	9%	62	11%	594	13%	50	13%	16	11%
Total Events	405	100%	407	100%	4,674	100%	390	100%	142	100%
<i>Violations</i>										
	<i>Quantity</i>	<i>% of Viol</i>	<i>Quantity</i>	<i>% of Viol</i>	<i>Quantity</i>	<i>% of Viol</i>	<i>Quantity</i>	<i>% of Viol</i>	<i>Quantity</i>	<i>% of Viol</i>
Uncont. Non-Issued Viol	33	94%	49	79%	450	76%	38	76%	11	69%
Cont. Non-Issued Viol	1	3%	5	8%	51	9%	4	9%	0	0%
Citations	1	3%	8	13%	93	16%	8	16%	5	31%
Daily Av. Vehicle Counts	505		506		6,299		525		564	
Av. Violation Speed	21.6		21.8		22.0		22.0		21.3	
Av. Issued Speed	17.0		19.7		20.2		20.2		21.0	
Av. Violation Sec.	81.2		77.1		76.4		76.4		31.9	
Av. Issued Sec.	99.9		72.5		75.9		75.9		23.0	
Cal. Days/Enforc. Days	31	31	30	30	365	365	30	30	31	31
Daily Citation Yield	0.03	0.03	0.26	0.26	0.25	0.25	0.25	0.25	0.16	0.16
Cit/Viol. Iss. Rate	3%		16%		16%		16%		31%	
Controllable Iss. Rate	50%		65%		65%		65%		100%	
<i>Non - Violations</i>										
	<i>Quantity</i>	<i>% Non-Viol</i>	<i>Quantity</i>	<i>% Non-Viol</i>	<i>Quantity</i>	<i>% Non-Viol</i>	<i>Quantity</i>	<i>% Non-Viol</i>	<i>Quantity</i>	<i>% Non-Viol</i>
Rear Axle Violation	0	0%	0	0%	0	0%	0	0%	0	0%
Right Turn	0	0%	0	0%	0	0%	0	0%	0	0%
No Violation Occurred	370	100%	346	100%	4,080	100%	340	100%	126	100%
Total Non Violations	370	100%	346	100%	4,080	100%	340	100%	126	100%
<i>Uncontrollable Non-Iss</i>										
	<i>Quantity</i>	<i>% of Un.Non</i>	<i>Quantity</i>	<i>% of Un.Non</i>	<i>Quantity</i>	<i>% of Un.Non</i>	<i>Quantity</i>	<i>% of Un.Non</i>	<i>Quantity</i>	<i>% of Un.Non</i>
No Plate	1	3%	2	4%	16	4%	1	4%	0	0%
Out of State Plate	0	0%	1	1%	2	0%	0	0%	2	18%
Glare on Plate	0	0%	1	2%	4	1%	0	1%	0	0%
Illegible Plate	0	0%	0	1%	3	1%	0	1%	1	9%
Plate Obstructed	0	0%	0	0%	2	0%	0	0%	0	0%
Windshield Glare	1	3%	1	3%	10	2%	1	2%	0	0%
Driver Obstructed	0	0%	1	3%	10	2%	1	2%	0	0%
Car Obstructed	4	12%	5	11%	65	14%	5	14%	0	0%
Emergency Vehicle	26	79%	34	70%	316	70%	26	70%	8	73%
No DMV Match Found	1	3%	3	5%	17	4%	1	4%	0	0%
LASD Expired	0	0%	0	0%	5	1%	0	1%	0	0%
Other	0	0%	0	0%	0	0%	0	0%	0	0%
Total	33	100%	49	100%	450	100%	38	100%	11	100%
<i>Controllable Non-Iss</i>										
	<i>Quantity</i>	<i>% Cont. Non</i>	<i>Quantity</i>	<i>% Cont. Non</i>	<i>Quantity</i>	<i>% Cont. Non</i>	<i>Quantity</i>	<i>% Cont. Non</i>	<i>Quantity</i>	<i>% Cont. Non</i>
Framing of Plate	0	0%	0	7%	3	6%	0	6%	0	0%
Focus / Clarity of Plate	0	0%	1	13%	6	12%	1	12%	0	0%
Dark Interior	1	100%	1	20%	10	20%	1	20%	0	0%
Framing of Driver	0	0%	0	0%	1	2%	0	2%	0	0%
Focus / Clarity of Driver	0	0%	1	13%	2	4%	0	4%	0	0%
Framing of Car	0	0%	2	47%	27	53%	2	53%	0	0%
Data Error	0	0%	0	0%	0	0%	0	0%	0	0%
Exposure	0	0%	0	0%	1	2%	0	2%	0	0%
Equipment Malfunction	0	0%	0	0%	0	0%	0	0%	0	0%
LASD Return	0	0%	0	0%	1	2%	0	2%	0	0%
ACS Expired	0	0%	0	0%	0	0%	0	0%	0	0%
Total	1	100%	5	100%	51	100%	4	100%	0	100%



A xerox Company

Los Angeles County MTA Gold Line Approach Summary Report Location 4027: EB to NB 3rd @ Arizona

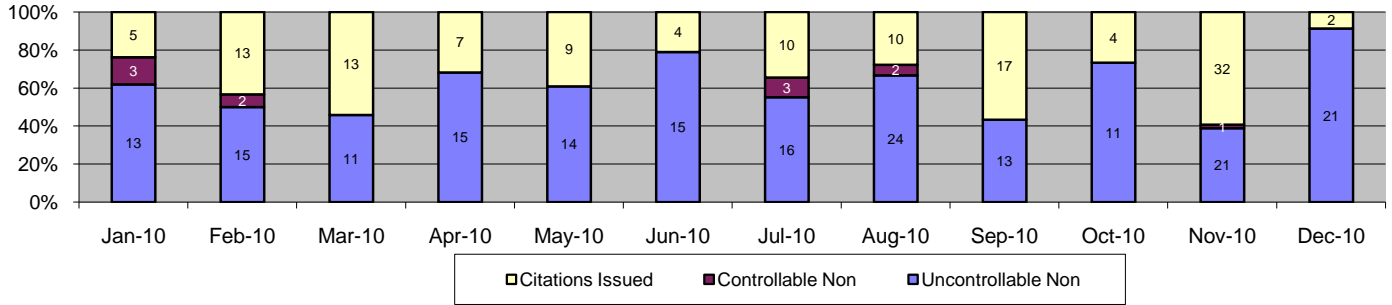


Events	Dec-10		3 Month Average		Year to Date Total		Year to Date Average		2009 Average	
	Quantity	% of Events	Quantity	% of Events	Quantity	% of Events	Quantity	% of Events	Quantity	% of Events
Non Violations	470	95%	300	95%	4,903	94%	409	94%	169	95%
Violations	26	5%	18	5%	290	6%	24	6%	9	5%
Total Events	496	100%	318	100%	5,193	100%	433	100%	178	100%
<i>Violations</i>										
	<i>Quantity</i>	<i>% of Viol</i>	<i>Quantity</i>	<i>% of Viol</i>	<i>Quantity</i>	<i>% of Viol</i>	<i>Quantity</i>	<i>% of Viol</i>	<i>Quantity</i>	<i>% of Viol</i>
Uncont. Non-Issued Viol	22	85%	13	69%	192	66%	16	66%	6	67%
Cont. Non-Issued Viol	0	0%	0	2%	21	7%	2	7%	0	0%
Citations	4	15%	5	29%	77	27%	6	27%	3	33%
Daily Av. Vehicle Counts	267		290		3,634		303		297	
Av. Violation Speed	20.4		19.0		19.4		19.4		17.4	
Av. Issued Speed	16.0		18.1		17.7		17.7		17.7	
Av. Violation Sec.	66.9		76.6		70.4		70.4		63.9	
Av. Issued Sec.	62.7		75.6		71.2		71.2		55.3	
Cal. Days/Enforc. Days	31	31	30	30	365	365	30	30	31	31
Daily Citation Yield	0.13	0.13	0.18	0.18	0.21	0.21	0.21	0.21	0.10	0.10
Cit/Viol. Iss. Rate	15%		27%		27%		27%		33%	
Controllable Iss. Rate	100%		79%		79%		79%		100%	
<i>Non - Violations</i>										
	<i>Quantity</i>	<i>% Non-Viol</i>	<i>Quantity</i>	<i>% Non-Viol</i>	<i>Quantity</i>	<i>% Non-Viol</i>	<i>Quantity</i>	<i>% Non-Viol</i>	<i>Quantity</i>	<i>% Non-Viol</i>
Rear Axle Violation	0	0%	0	0%	1	0%	0	0%	0	0%
Right Turn	0	0%	0	0%	0	0%	0	0%	0	0%
No Violation Occurred	470	100%	300	100%	4,902	100%	409	100%	169	100%
Total Non Violations	470	100%	300	100%	4,903	100%	409	100%	169	100%
<i>Uncontrollable Non-Iss</i>										
	<i>Quantity</i>	<i>% of Un.Non</i>	<i>Quantity</i>	<i>% of Un.Non</i>	<i>Quantity</i>	<i>% of Un.Non</i>	<i>Quantity</i>	<i>% of Un.Non</i>	<i>Quantity</i>	<i>% of Un.Non</i>
No Plate	2	9%	0	3%	24	13%	2	13%	0	0%
Out of State Plate	0	0%	0	0%	4	2%	0	2%	0	0%
Glare on Plate	0	0%	0	0%	0	0%	0	0%	0	0%
Illegible Plate	0	0%	0	3%	4	2%	0	2%	0	0%
Plate Obstructed	0	0%	0	0%	2	1%	0	1%	0	0%
Windshield Glare	0	0%	0	3%	22	11%	2	11%	0	0%
Driver Obstructed	5	23%	3	21%	31	16%	3	16%	0	0%
Car Obstructed	4	18%	4	29%	42	22%	4	22%	0	0%
Emergency Vehicle	10	45%	4	32%	42	22%	4	22%	1	17%
No DMV Match Found	1	5%	1	11%	17	9%	1	9%	5	83%
LASD Expired	0	0%	0	0%	4	2%	0	2%	0	0%
Other	0	0%	0	0%	0	0%	0	0%	0	0%
Total	22	100%	13	100%	192	100%	16	100%	6	100%
<i>Controllable Non-Iss</i>										
	<i>Quantity</i>	<i>% Cont. Non</i>	<i>Quantity</i>	<i>% Cont. Non</i>	<i>Quantity</i>	<i>% Cont. Non</i>	<i>Quantity</i>	<i>% Cont. Non</i>	<i>Quantity</i>	<i>% Cont. Non</i>
Framing of Plate	0	0%	0	0%	0	0%	0	0%	0	0%
Focus / Clarity of Plate	0	0%	0	100%	1	5%	0	5%	0	0%
Dark Interior	0	0%	0	0%	3	14%	0	14%	0	0%
Framing of Driver	0	0%	0	0%	1	5%	0	5%	0	0%
Focus / Clarity of Driver	0	0%	0	0%	0	0%	0	0%	0	0%
Framing of Car	0	0%	0	0%	16	76%	1	76%	0	0%
Data Error	0	0%	0	0%	0	0%	0	0%	0	0%
Exposure	0	0%	0	0%	0	0%	0	0%	0	0%
Equipment Malfunction	0	0%	0	0%	0	0%	0	0%	0	0%
LASD Return	0	0%	0	0%	0	0%	0	0%	0	0%
ACS Expired	0	0%	0	0%	0	0%	0	0%	0	0%
Total	0	100%	0	100%	21	100%	2	100%	0	100%



A Xerox Company

Los Angeles County MTA Gold Line Approach Summary Report Location 4029: WB to SB 3rd @ Arizona

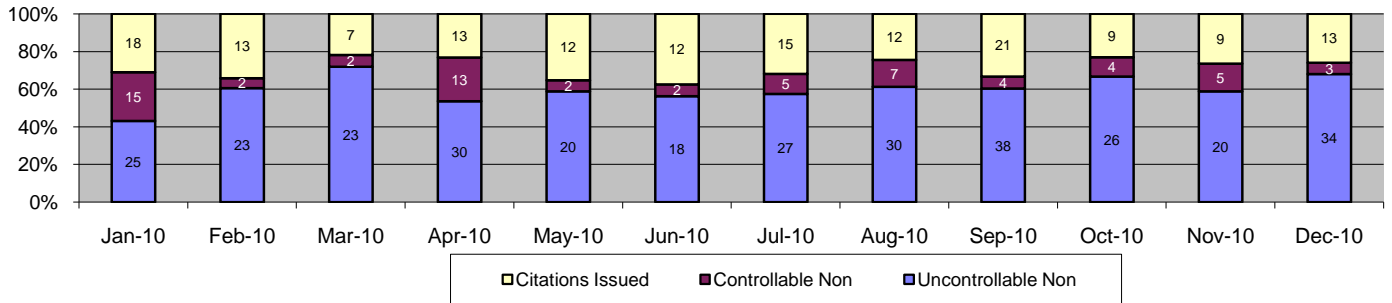


Events	Dec-10		3 Month Average		Year to Date Total		Year to Date Average		2009 Average	
	Quantity	% of Events	Quantity	% of Events	Quantity	% of Events	Quantity	% of Events	Quantity	% of Events
Non Violations	186	89%	203	88%	2,287	88%	191	88%	90	89%
Violations	23	11%	33	11%	326	12%	27	12%	11	11%
Total Events	209	100%	236	100%	2,613	100%	218	100%	101	100%
<i>Violations</i>										
	Quantity	% of Viol	Quantity	% of Viol	Quantity	% of Viol	Quantity	% of Viol	Quantity	% of Viol
Uncont. Non-Issued Viol	21	91%	15	45%	189	58%	16	58%	10	91%
Cont. Non-Issued Viol	0	0%	0	1%	11	3%	1	3%	1	9%
Citations	2	9%	18	54%	126	39%	11	39%	0	0%
Daily Av. Vehicle Counts	214		233		2,641		220		218	
Av. Violation Speed	19.0		18.8		18.5		18.5		0.0	
Av. Issued Speed	19.0		17.3		17.2		17.2		0.0	
Av. Violation Sec.	69.0		70.4		73.1		73.1		0.0	
Av. Issued Sec.	67.7		60.1		69.5		69.5		0.0	
Cal. Days/Enforc. Days	31	31	30	30	365	365	30	30	31	31
Daily Citation Yield	0.06	0.06	0.58	0.58	0.35	0.35	0.35	0.35	0.00	0.00
Cit/Viol. Iss. Rate	9%		39%		39%		39%		0%	
Controllable Iss. Rate	100%		92%		92%		92%		0%	
<i>Non - Violations</i>										
	Quantity	% Non-Viol	Quantity	% Non-Viol	Quantity	% Non-Viol	Quantity	% Non-Viol	Quantity	% Non-Viol
Rear Axle Violation	0	0%	0	0%	0	0%	0	0%	0	0%
Right Turn	0	0%	0	0%	0	0%	0	0%	0	0%
No Violation Occurred	186	100%	203	100%	2,287	100%	191	100%	90	100%
Total Non Violations	186	100%	203	100%	2,287	100%	191	100%	90	100%
<i>Uncontrollable Non-Iss</i>										
	Quantity	% of Un.Non	Quantity	% of Un.Non	Quantity	% of Un.Non	Quantity	% of Un.Non	Quantity	% of Un.Non
No Plate	3	14%	2	11%	28	15%	2	15%	0	0%
Out of State Plate	0	0%	1	4%	6	3%	1	3%	0	0%
Glare on Plate	0	0%	0	0%	0	0%	0	0%	0	0%
Illegible Plate	0	0%	0	0%	0	0%	0	0%	0	0%
Plate Obstructed	0	0%	0	0%	0	0%	0	0%	0	0%
Windshield Glare	0	0%	0	2%	3	2%	0	2%	0	0%
Driver Obstructed	0	0%	1	7%	12	6%	1	6%	0	0%
Car Obstructed	2	10%	3	18%	32	17%	3	17%	0	0%
Emergency Vehicle	13	62%	5	33%	66	35%	6	35%	0	0%
No DMV Match Found	3	14%	3	22%	33	17%	3	17%	0	0%
LASD Expired	0	0%	0	2%	6	3%	1	3%	0	0%
Other	0	0%	0	0%	3	2%	0	2%	10	100%
Total	21	100%	15	100%	189	100%	16	100%	10	100%
<i>Controllable Non-Iss</i>										
	Quantity	% Cont. Non	Quantity	% Cont. Non	Quantity	% Cont. Non	Quantity	% Cont. Non	Quantity	% Cont. Non
Framing of Plate	0	0%	0	0%	0	0%	0	0%	0	0%
Focus / Clarity of Plate	0	0%	0	0%	0	0%	0	0%	0	0%
Dark Interior	0	0%	0	100%	1	9%	0	9%	0	0%
Framing of Driver	0	0%	0	0%	0	0%	0	0%	0	0%
Focus / Clarity of Driver	0	0%	0	0%	0	0%	0	0%	0	0%
Framing of Car	0	0%	0	0%	4	36%	0	36%	1	100%
Data Error	0	0%	0	0%	0	0%	0	0%	0	0%
Exposure	0	0%	0	0%	0	0%	0	0%	0	0%
Equipment Malfunction	0	0%	0	0%	0	0%	0	0%	0	0%
LASD Return	0	0%	0	0%	6	55%	1	55%	0	0%
ACS Expired	0	0%	0	0%	0	0%	0	0%	0	0%
Total	0	100%	0	100%	11	100%	1	100%	1	100%



A Xerox Company

Los Angeles County MTA Gold Line Approach Summary Report Location 4037: EB to NB 3rd @ McDonnell

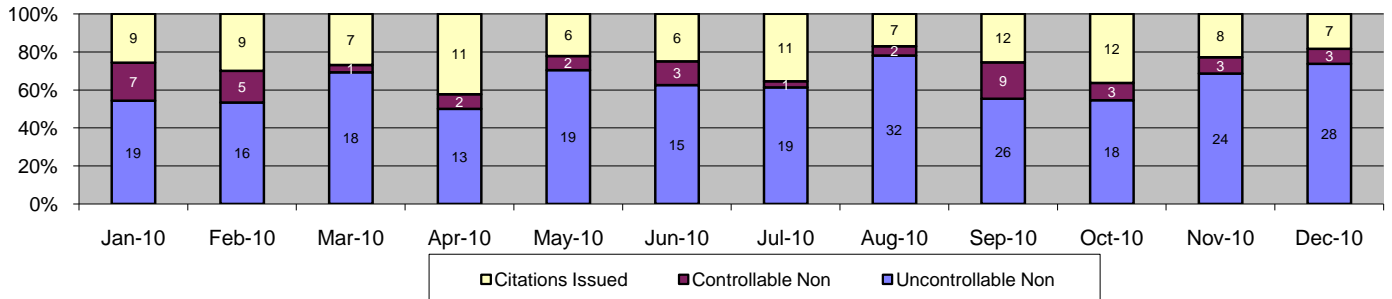


Events	Dec-10		3 Month Average		Year to Date Total		Year to Date Average		2009 Average	
	Quantity	% of Events	Quantity	% of Events	Quantity	% of Events	Quantity	% of Events	Quantity	% of Events
Non Violations	516	91%	443	91%	5,531	91%	461	91%	191	91%
Violations	50	9%	45	8%	532	9%	44	9%	20	9%
Total Events	566	100%	488	100%	6,063	100%	505	100%	211	100%
<i>Violations</i>										
	<i>Quantity</i>	<i>% of Viol</i>	<i>Quantity</i>	<i>% of Viol</i>	<i>Quantity</i>	<i>% of Viol</i>	<i>Quantity</i>	<i>% of Viol</i>	<i>Quantity</i>	<i>% of Viol</i>
Uncont. Non-Issued Viol	34	68%	28	62%	314	59%	26	59%	8	40%
Cont. Non-Issued Viol	3	6%	4	10%	64	12%	5	12%	2	10%
Citations	13	26%	13	29%	154	29%	13	29%	10	50%
Daily Av. Vehicle Counts	542		567		7,316		610		599	
Av. Violation Speed	19.2		18.3		18.4		18.4		18.0	
Av. Issued Speed	16.7		17.2		17.5		17.5		18.4	
Av. Violation Sec.	51.8		46.1		49.7		49.7		47.3	
Av. Issued Sec.	30.5		44.0		43.0		43.0		44.0	
Cal. Days/Enforc. Days	31	31	30	30	365	365	30	30	31	31
Daily Citation Yield	0.42	0.42	0.43	0.43	0.42	0.42	0.42	0.42	0.32	0.32
Cit/Viol. Iss. Rate	26%		29%		29%		29%		50%	
Controllable Iss. Rate	81%		71%		71%		71%		83%	
<i>Non - Violations</i>										
	<i>Quantity</i>	<i>% Non-Viol</i>	<i>Quantity</i>	<i>% Non-Viol</i>	<i>Quantity</i>	<i>% Non-Viol</i>	<i>Quantity</i>	<i>% Non-Viol</i>	<i>Quantity</i>	<i>% Non-Viol</i>
Rear Axle Violation	0	0%	0	0%	0	0%	0	0%	0	0%
Right Turn	0	0%	0	0%	0	0%	0	0%	0	0%
No Violation Occurred	516	100%	443	100%	5,531	100%	461	100%	191	100%
Total Non Violations	516	100%	443	100%	5,531	100%	461	100%	191	100%
<i>Uncontrollable Non-Iss</i>										
	<i>Quantity</i>	<i>% of Un.Non</i>	<i>Quantity</i>	<i>% of Un.Non</i>	<i>Quantity</i>	<i>% of Un.Non</i>	<i>Quantity</i>	<i>% of Un.Non</i>	<i>Quantity</i>	<i>% of Un.Non</i>
No Plate	1	3%	3	12%	41	13%	3	13%	0	0%
Out of State Plate	1	3%	0	1%	9	3%	1	3%	0	0%
Glare on Plate	0	0%	0	1%	1	0%	0	0%	0	0%
Illegible Plate	1	3%	0	1%	20	6%	2	6%	2	25%
Plate Obstructed	0	0%	0	0%	1	0%	0	0%	0	0%
Windshield Glare	2	6%	4	14%	41	13%	3	13%	0	0%
Driver Obstructed	3	9%	4	14%	30	10%	3	10%	2	25%
Car Obstructed	11	32%	7	26%	58	18%	5	18%	2	25%
Emergency Vehicle	11	32%	7	26%	71	23%	6	23%	0	0%
No DMV Match Found	2	6%	1	4%	36	11%	3	11%	2	25%
LASD Expired	0	0%	0	0%	4	1%	0	1%	0	0%
Other	2	6%	0	0%	2	1%	0	1%	0	0%
Total	34	100%	28	100%	314	100%	26	100%	8	100%
<i>Controllable Non-Iss</i>										
	<i>Quantity</i>	<i>% Cont. Non</i>	<i>Quantity</i>	<i>% Cont. Non</i>	<i>Quantity</i>	<i>% Cont. Non</i>	<i>Quantity</i>	<i>% Cont. Non</i>	<i>Quantity</i>	<i>% Cont. Non</i>
Framing of Plate	0	0%	1	23%	6	9%	1	9%	0	0%
Focus / Clarity of Plate	1	33%	1	23%	8	13%	1	13%	0	0%
Dark Interior	0	0%	1	15%	15	23%	1	23%	0	0%
Framing of Driver	0	0%	0	0%	0	0%	0	0%	0	0%
Focus / Clarity of Driver	1	33%	0	8%	4	6%	0	6%	0	0%
Framing of Car	0	0%	0	0%	8	13%	1	13%	0	0%
Data Error	0	0%	0	0%	0	0%	0	0%	0	0%
Exposure	0	0%	0	0%	0	0%	0	0%	0	0%
Equipment Malfunction	0	0%	0	0%	0	0%	0	0%	0	0%
LASD Return	1	33%	1	31%	23	36%	2	36%	2	100%
ACS Expired	0	0%	0	0%	0	0%	0	0%	0	0%
Total	3	100%	4	100%	64	100%	5	100%	2	100%



A xerox Company

Los Angeles County MTA Gold Line Approach Summary Report Location 4039: WB to SB 3rd @ McDonnell

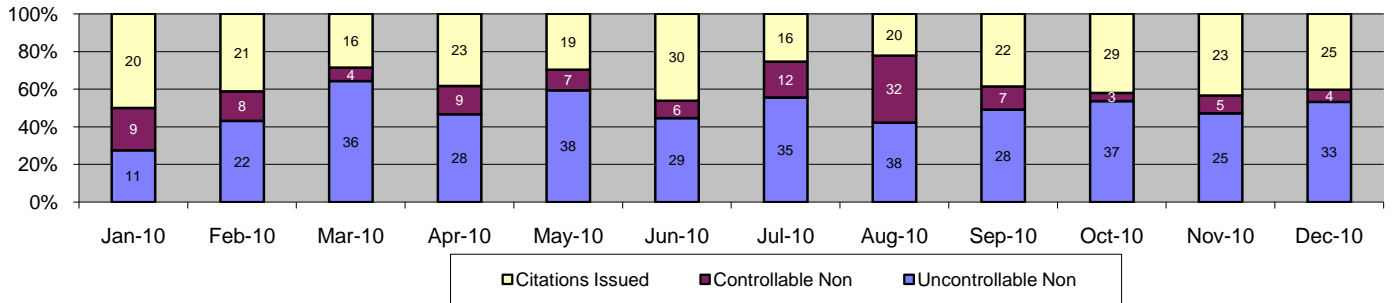


Events	Dec-10		3 Month Average		Year to Date Total		Year to Date Average		2009 Average	
	Quantity	% of Events	Quantity	% of Events	Quantity	% of Events	Quantity	% of Events	Quantity	% of Events
Non Violations	439	92%	398	93%	4,814	92%	401	92%	175	97%
Violations	38	8%	38	6%	393	8%	33	8%	6	3%
Total Events	477	100%	436	100%	5,207	100%	434	100%	181	100%
<i>Violations</i>										
	Quantity	% of Viol	Quantity	% of Viol	Quantity	% of Viol	Quantity	% of Viol	Quantity	% of Viol
Uncont. Non-Issued Viol	28	74%	23	59%	247	63%	21	63%	5	83%
Cont. Non-Issued Viol	3	8%	5	13%	41	10%	3	10%	0	0%
Citations	7	18%	11	28%	105	27%	9	27%	1	17%
Daily Av. Vehicle Counts	366		399		4,669		389		379	
Av. Violation Speed	21.3		19.7		19.5		19.5		15.0	
Av. Issued Speed	17.9		17.7		18.0		18.0		15.0	
Av. Violation Sec.	78.3		76.0		75.2		75.2		99.9	
Av. Issued Sec.	85.8		72.2		77.0		77.0		99.9	
Cal. Days/Enforc. Days	31	31	30	30	365	365	30	30	31	31
Daily Citation Yield	0.23	0.23	0.35	0.35	0.29	0.29	0.29	0.29	0.03	0.03
Cit/Viol. Iss. Rate	18%		27%		27%		27%		17%	
Controllable Iss. Rate	70%		72%		72%		72%		100%	
<i>Non - Violations</i>										
	Quantity	% Non-Viol	Quantity	% Non-Viol	Quantity	% Non-Viol	Quantity	% Non-Viol	Quantity	% Non-Viol
Rear Axle Violation	0	0%	0	0%	1	0%	0	0%	1	1%
Right Turn	0	0%	0	0%	0	0%	0	0%	0	0%
No Violation Occurred	439	100%	398	100%	4,813	100%	401	100%	174	99%
Total Non Violations	439	100%	398	100%	4,814	100%	401	100%	175	100%
<i>Uncontrollable Non-Iss</i>										
	Quantity	% of Un.Non	Quantity	% of Un.Non	Quantity	% of Un.Non	Quantity	% of Un.Non	Quantity	% of Un.Non
No Plate	1	4%	4	16%	30	12%	3	12%	0	0%
Out of State Plate	0	0%	0	1%	1	0%	0	0%	0	0%
Glare on Plate	0	0%	1	3%	8	3%	1	3%	0	0%
Illegible Plate	0	0%	1	3%	18	7%	2	7%	0	0%
Plate Obstructed	0	0%	0	0%	0	0%	0	0%	0	0%
Windshield Glare	0	0%	0	1%	3	1%	0	1%	0	0%
Driver Obstructed	2	7%	1	6%	18	7%	2	7%	0	0%
Car Obstructed	7	25%	5	24%	56	23%	5	23%	0	0%
Emergency Vehicle	14	50%	7	32%	87	35%	7	35%	4	80%
No DMV Match Found	3	11%	3	12%	20	8%	2	8%	1	20%
LASD Expired	0	0%	0	1%	5	2%	0	2%	0	0%
Other	1	4%	0	0%	1	0%	0	0%	0	0%
Total	28	100%	23	100%	247	100%	21	100%	5	100%
<i>Controllable Non-Iss</i>										
	Quantity	% Cont. Non	Quantity	% Cont. Non	Quantity	% Cont. Non	Quantity	% Cont. Non	Quantity	% Cont. Non
Framing of Plate	0	0%	2	33%	12	29%	1	29%	0	0%
Focus / Clarity of Plate	1	33%	0	0%	2	5%	0	5%	0	0%
Dark Interior	1	33%	0	0%	3	7%	0	7%	0	0%
Framing of Driver	1	33%	0	7%	3	7%	0	7%	0	0%
Focus / Clarity of Driver	0	0%	0	0%	1	2%	0	2%	0	0%
Framing of Car	0	0%	2	47%	14	34%	1	34%	0	0%
Data Error	0	0%	0	0%	0	0%	0	0%	0	0%
Exposure	0	0%	0	0%	0	0%	0	0%	0	0%
Equipment Malfunction	0	0%	0	0%	0	0%	0	0%	0	0%
LASD Return	0	0%	1	13%	6	15%	1	15%	0	0%
ACS Expired	0	0%	0	0%	0	0%	0	0%	0	0%
Total	3	100%	5	100%	41	100%	3	100%	0	100%



A xerox Company

Los Angeles County MTA Gold Line Approach Summary Report Location 4047: EB to NB 3rd @ Ford

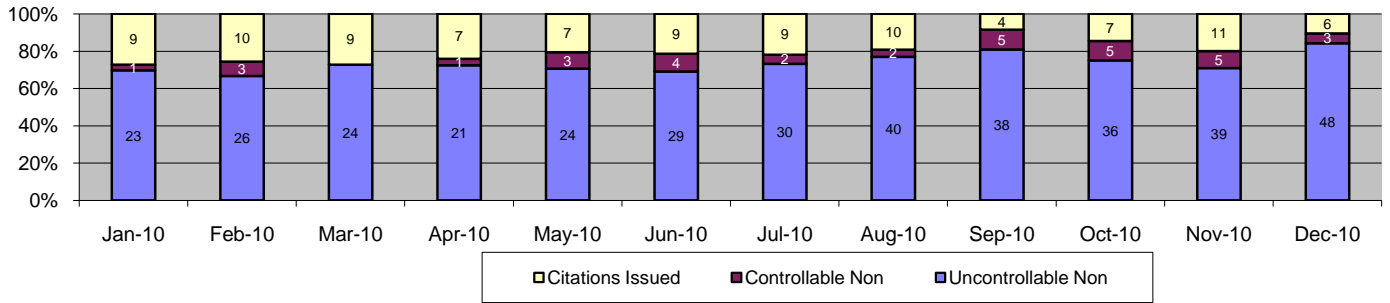


Events	Dec-10		3 Month Average		Year to Date Total		Year to Date Average		2009 Average	
	Quantity	% of Events	Quantity	% of Events	Quantity	% of Events	Quantity	% of Events	Quantity	% of Events
Non Violations	445	88%	448	89%	5,668	89%	472	89%	157	88%
Violations	62	12%	60	10%	730	11%	61	11%	21	12%
Total Events	507	100%	507	100%	6,398	100%	533	100%	178	100%
<i>Violations</i>										
	Quantity	% of Viol	Quantity	% of Viol	Quantity	% of Viol	Quantity	% of Viol	Quantity	% of Viol
Uncont. Non-Issued Viol	33	53%	30	50%	360	49%	30	49%	9	43%
Cont. Non-Issued Viol	4	6%	5	8%	106	15%	9	15%	2	10%
Citations	25	40%	25	41%	264	36%	22	36%	10	48%
Daily Av. Vehicle Counts	593		635		7,228		602		546	
Av. Violation Speed	18.8		19.6		19.6		19.6		18.9	
Av. Issued Speed	18.2		19.9		19.6		19.6		19.3	
Av. Violation Sec.	49.5		43.9		42.3		42.3		53.4	
Av. Issued Sec.	51.5		32.1		37.5		37.5		59.3	
Cal. Days/Enforc. Days	31	31	30	30	365	365	30	30	31	31
Daily Citation Yield	0.81	0.81	0.81	0.81	0.72	0.72	0.72	0.72	0.32	0.32
Cit/Viol. Iss. Rate	40%		36%		36%		36%		48%	
Controllable Iss. Rate	86%		71%		71%		71%		83%	
<i>Non - Violations</i>										
	Quantity	% Non-Viol	Quantity	% Non-Viol	Quantity	% Non-Viol	Quantity	% Non-Viol	Quantity	% Non-Viol
Rear Axle Violation	0	0%	0	0%	0	0%	0	0%	0	0%
Right Turn	0	0%	0	0%	0	0%	0	0%	0	0%
No Violation Occurred	445	100%	448	100%	5,668	100%	472	100%	157	100%
Total Non Violations	445	100%	448	100%	5,668	100%	472	100%	157	100%
<i>Uncontrollable Non-Iss</i>										
	Quantity	% of Un.Non	Quantity	% of Un.Non	Quantity	% of Un.Non	Quantity	% of Un.Non	Quantity	% of Un.Non
No Plate	2	6%	3	9%	38	11%	3	11%	0	0%
Out of State Plate	0	0%	0	0%	5	1%	0	1%	1	11%
Glare on Plate	1	3%	2	6%	8	2%	1	2%	0	0%
Illegible Plate	0	0%	1	3%	15	4%	1	4%	2	22%
Plate Obstructed	0	0%	0	0%	4	1%	0	1%	0	0%
Windshield Glare	3	9%	2	7%	36	10%	3	10%	0	0%
Driver Obstructed	1	3%	4	13%	37	10%	3	10%	1	11%
Car Obstructed	10	30%	6	20%	77	21%	6	21%	2	22%
Emergency Vehicle	12	36%	9	29%	76	21%	6	21%	2	22%
No DMV Match Found	3	9%	4	13%	44	12%	4	12%	1	11%
LASD Expired	0	0%	0	0%	14	4%	1	4%	0	0%
Other	1	3%	0	0%	6	2%	1	2%	0	0%
Total	33	100%	30	100%	360	100%	30	100%	9	100%
<i>Controllable Non-Iss</i>										
	Quantity	% Cont. Non	Quantity	% Cont. Non	Quantity	% Cont. Non	Quantity	% Cont. Non	Quantity	% Cont. Non
Framing of Plate	0	0%	0	7%	10	9%	1	9%	0	0%
Focus / Clarity of Plate	2	50%	0	0%	7	7%	1	7%	0	0%
Dark Interior	1	25%	1	27%	11	10%	1	10%	0	0%
Framing of Driver	0	0%	0	7%	2	2%	0	2%	0	0%
Focus / Clarity of Driver	0	0%	0	0%	1	1%	0	1%	0	0%
Framing of Car	0	0%	0	7%	13	12%	1	12%	1	50%
Data Error	0	0%	0	0%	0	0%	0	0%	0	0%
Exposure	0	0%	0	0%	23	22%	2	22%	0	0%
Equipment Malfunction	0	0%	0	0%	3	3%	0	3%	0	0%
LASD Return	1	25%	3	53%	36	34%	3	34%	1	50%
ACS Expired	0	0%	0	0%	0	0%	0	0%	0	0%
Total	4	100%	5	100%	106	100%	9	100%	2	100%



A Xerox Company

Los Angeles County MTA Gold Line Approach Summary Report Location 4049: WB to SB 3rd @ Ford

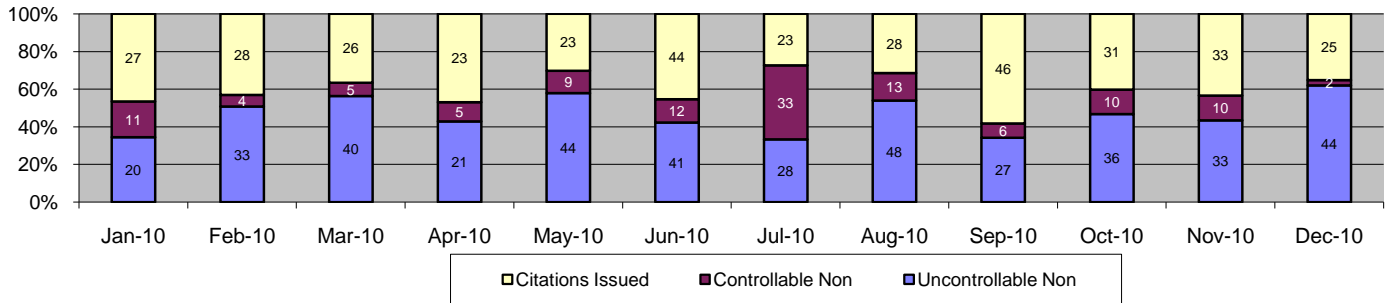


Events	Dec-10		3 Month Average		Year to Date Total		Year to Date Average		2009 Average	
	Quantity	% of Events	Quantity	% of Events	Quantity	% of Events	Quantity	% of Events	Quantity	% of Events
Non Violations	285	83%	281	89%	3,304	87%	275	87%	150	94%
Violations	57	17%	50	10%	510	13%	43	13%	10	6%
Total Events	342	100%	331	100%	3,814	100%	318	100%	160	100%
<i>Violations</i>										
	Quantity	% of Viol	Quantity	% of Viol	Quantity	% of Viol	Quantity	% of Viol	Quantity	% of Viol
Uncont. Non-Issued Viol	48	84%	38	75%	378	74%	32	74%	7	70%
Cont. Non-Issued Viol	3	5%	5	10%	34	7%	3	7%	1	10%
Citations	6	11%	7	15%	98	19%	8	19%	2	20%
Daily Av. Vehicle Counts	655		702		8,470		706		753	
Av. Violation Speed	20.9		20.1		20.0		20.0		17.7	
Av. Issued Speed	22.5		18.9		20.3		20.3		16.0	
Av. Violation Sec.	59.2		60.7		60.9		60.9		66.9	
Av. Issued Sec.	38.8		46.9		51.0		51.0		99.9	
Cal. Days/Enforc. Days	31	31	30	30	365	365	30	30	31	31
Daily Citation Yield	0.19	0.19	0.24	0.24	0.27	0.27	0.27	0.27	0.06	0.06
Cit/Viol. Iss. Rate	11%		19%		19%		19%		20%	
Controllable Iss. Rate	67%		74%		74%		74%		67%	
<i>Non - Violations</i>										
	Quantity	% Non-Viol	Quantity	% Non-Viol	Quantity	% Non-Viol	Quantity	% Non-Viol	Quantity	% Non-Viol
Rear Axle Violation	0	0%	0	0%	0	0%	0	0%	0	0%
Right Turn	0	0%	0	0%	0	0%	0	0%	0	0%
No Violation Occurred	285	100%	281	100%	3,304	100%	275	100%	150	100%
Total Non Violations	285	100%	281	100%	3,304	100%	275	100%	150	100%
<i>Uncontrollable Non-Iss</i>										
	Quantity	% of Un.Non	Quantity	% of Un.Non	Quantity	% of Un.Non	Quantity	% of Un.Non	Quantity	% of Un.Non
No Plate	7	15%	3	8%	42	11%	4	11%	1	14%
Out of State Plate	0	0%	0	1%	4	1%	0	1%	0	0%
Glare on Plate	0	0%	0	0%	2	1%	0	1%	0	0%
Illegible Plate	0	0%	0	1%	6	2%	1	2%	0	0%
Plate Obstructed	1	2%	0	0%	2	1%	0	1%	0	0%
Windshield Glare	0	0%	1	3%	9	2%	1	2%	0	0%
Driver Obstructed	2	4%	3	7%	24	6%	2	6%	0	0%
Car Obstructed	8	17%	7	19%	53	14%	4	14%	1	14%
Emergency Vehicle	28	58%	21	56%	195	52%	16	52%	5	71%
No DMV Match Found	2	4%	2	4%	29	8%	2	8%	0	0%
LASD Expired	0	0%	0	1%	4	1%	0	1%	0	0%
Other	0	0%	0	0%	8	2%	1	2%	0	0%
Total	48	100%	38	100%	378	100%	32	100%	7	100%
<i>Controllable Non-Iss</i>										
	Quantity	% Cont. Non	Quantity	% Cont. Non	Quantity	% Cont. Non	Quantity	% Cont. Non	Quantity	% Cont. Non
Framing of Plate	0	0%	1	27%	5	15%	0	15%	1	100%
Focus / Clarity of Plate	1	33%	1	13%	4	12%	0	12%	0	0%
Dark Interior	0	0%	2	47%	10	29%	1	29%	0	0%
Framing of Driver	0	0%	0	0%	1	3%	0	3%	0	0%
Focus / Clarity of Driver	1	33%	0	0%	4	12%	0	12%	0	0%
Framing of Car	0	0%	0	7%	5	15%	0	15%	0	0%
Data Error	0	0%	0	0%	0	0%	0	0%	0	0%
Exposure	0	0%	0	0%	0	0%	0	0%	0	0%
Equipment Malfunction	0	0%	0	0%	0	0%	0	0%	0	0%
LASD Return	1	33%	0	7%	5	15%	0	15%	0	0%
ACS Expired	0	0%	0	0%	0	0%	0	0%	0	0%
Total	3	100%	5	100%	34	100%	3	100%	1	100%



A Xerox Company

Los Angeles County MTA Gold Line Approach Summary Report Location 4057: EB to NB 3rd @ Eastern

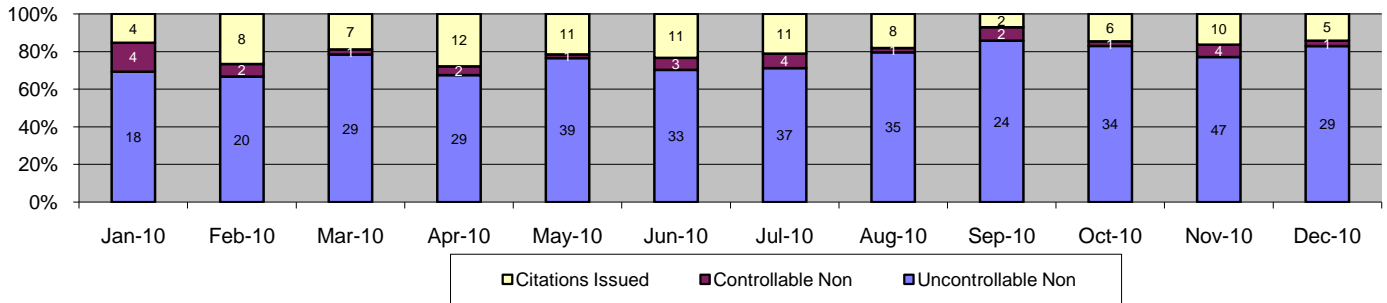


Events	Dec-10		3 Month Average		Year to Date Total		Year to Date Average		2009 Average	
	Quantity	% of Events	Quantity	% of Events	Quantity	% of Events	Quantity	% of Events	Quantity	% of Events
Non Violations	207	74%	207	80%	2,909	77%	242	77%	141	84%
Violations	71	26%	77	19%	892	23%	74	23%	27	16%
Total Events	278	100%	284	100%	3,801	100%	317	100%	168	100%
<i>Violations</i>										
	<i>Quantity</i>	<i>% of Viol</i>	<i>Quantity</i>	<i>% of Viol</i>	<i>Quantity</i>	<i>% of Viol</i>	<i>Quantity</i>	<i>% of Viol</i>	<i>Quantity</i>	<i>% of Viol</i>
Uncont. Non-Issued Viol	44	62%	32	41%	415	47%	35	47%	13	48%
Cont. Non-Issued Viol	2	3%	9	11%	120	13%	10	13%	1	4%
Citations	25	35%	37	47%	357	40%	30	40%	13	48%
Daily Av. Vehicle Counts	1,076		1,142		26,260		2,188		1,157	
Av. Violation Speed	20.9		21.0		21.2		21.2		20.2	
Av. Issued Speed	20.9		22.2		21.7		21.7		19.6	
Av. Violation Sec.	26.6		21.4		28.1		28.1		32.4	
Av. Issued Sec.	18.9		15.0		22.3		22.3		32.6	
Cal. Days/Enforc. Days	31	31	30	30	365	365	30	30	31	31
Daily Citation Yield	0.81	0.81	1.21	1.21	0.98	0.98	0.98	0.98	0.42	0.42
Cit/Viol. Iss. Rate	35%		40%		40%		40%		48%	
Controllable Iss. Rate	93%		75%		75%		75%		93%	
<i>Non - Violations</i>										
	<i>Quantity</i>	<i>% Non-Viol</i>	<i>Quantity</i>	<i>% Non-Viol</i>	<i>Quantity</i>	<i>% Non-Viol</i>	<i>Quantity</i>	<i>% Non-Viol</i>	<i>Quantity</i>	<i>% Non-Viol</i>
Rear Axle Violation	0	0%	0	0%	1	0%	0	0%	0	0%
Right Turn	0	0%	0	0%	0	0%	0	0%	0	0%
No Violation Occurred	207	100%	207	100%	2,908	100%	242	100%	141	100%
Total Non Violations	207	100%	207	100%	2,909	100%	242	100%	141	100%
<i>Uncontrollable Non-Iss</i>										
	<i>Quantity</i>	<i>% of Un.Non</i>	<i>Quantity</i>	<i>% of Un.Non</i>	<i>Quantity</i>	<i>% of Un.Non</i>	<i>Quantity</i>	<i>% of Un.Non</i>	<i>Quantity</i>	<i>% of Un.Non</i>
No Plate	6	14%	6	18%	57	14%	5	14%	2	15%
Out of State Plate	1	2%	0	1%	10	2%	1	2%	2	15%
Glare on Plate	3	7%	2	6%	17	4%	1	4%	0	0%
Illegible Plate	0	0%	2	5%	24	6%	2	6%	1	8%
Plate Obstructed	1	2%	0	0%	4	1%	0	1%	0	0%
Windshield Glare	7	16%	1	3%	33	8%	3	8%	1	8%
Driver Obstructed	2	5%	6	19%	35	8%	3	8%	0	0%
Car Obstructed	2	5%	2	5%	21	5%	2	5%	0	0%
Emergency Vehicle	9	20%	7	22%	98	24%	8	24%	3	23%
No DMV Match Found	7	16%	5	17%	72	17%	6	17%	4	31%
LASD Expired	0	0%	1	3%	34	8%	3	8%	0	0%
Other	6	14%	0	1%	10	2%	1	2%	0	0%
Total	44	100%	32	100%	415	100%	35	100%	13	100%
<i>Controllable Non-Iss</i>										
	<i>Quantity</i>	<i>% Cont. Non</i>	<i>Quantity</i>	<i>% Cont. Non</i>	<i>Quantity</i>	<i>% Cont. Non</i>	<i>Quantity</i>	<i>% Cont. Non</i>	<i>Quantity</i>	<i>% Cont. Non</i>
Framing of Plate	1	50%	3	31%	21	18%	2	18%	0	0%
Focus / Clarity of Plate	0	0%	1	8%	6	5%	1	5%	0	0%
Dark Interior	1	50%	1	15%	7	6%	1	6%	0	0%
Framing of Driver	0	0%	0	0%	2	2%	0	2%	0	0%
Focus / Clarity of Driver	0	0%	0	4%	2	2%	0	2%	0	0%
Framing of Car	0	0%	0	4%	5	4%	0	4%	0	0%
Data Error	0	0%	0	0%	0	0%	0	0%	0	0%
Exposure	0	0%	0	0%	27	23%	2	23%	0	0%
Equipment Malfunction	0	0%	0	0%	0	0%	0	0%	0	0%
LASD Return	0	0%	3	38%	50	42%	4	42%	1	100%
ACS Expired	0	0%	0	0%	0	0%	0	0%	0	0%
Total	2	100%	9	100%	120	100%	10	100%	1	100%



A Xerox Company

Los Angeles County MTA Gold Line Approach Summary Report Location 4059: WB to SB 3rd @ Eastern

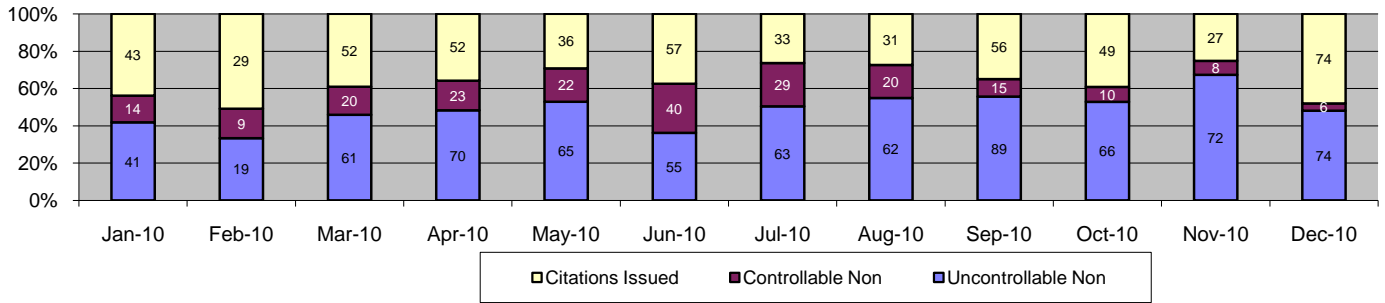


Events	Dec-10		3 Month Average		Year to Date Total		Year to Date Average		2009 Average	
	Quantity	% of Events	Quantity	% of Events	Quantity	% of Events	Quantity	% of Events	Quantity	% of Events
Non Violations	149	81%	131	76%	1,564	76%	130	76%	58	81%
Violations	35	19%	43	26%	495	24%	41	24%	14	19%
Total Events	184	100%	175	100%	2,059	100%	172	100%	72	100%
<i>Violations</i>										
	<i>Quantity</i>	<i>% of Viol</i>	<i>Quantity</i>	<i>% of Viol</i>	<i>Quantity</i>	<i>% of Viol</i>	<i>Quantity</i>	<i>% of Viol</i>	<i>Quantity</i>	<i>% of Viol</i>
Uncont. Non-Issued Viol	29	83%	35	81%	374	76%	31	76%	9	64%
Cont. Non-Issued Viol	1	3%	2	5%	26	5%	2	5%	0	0%
Citations	5	14%	6	14%	95	19%	8	19%	5	36%
Daily Av. Vehicle Counts	301		309		3,871		323		322	
Av. Violation Speed	20.6		21.6		21.3		21.3		20.8	
Av. Issued Speed	20.2		20.5		20.4		20.4		20.8	
Av. Violation Sec.	88.7		77.3		78.1		78.1		80.2	
Av. Issued Sec.	60.0		69.2		67.1		67.1		80.2	
Cal. Days/Enforc. Days	31	31	30	30	365	365	30	30	31	31
Daily Citation Yield	0.16	0.16	0.20	0.20	0.26	0.26	0.26	0.26	0.16	0.16
Cit/Viol. Iss. Rate	14%		19%		19%		19%		36%	
Controllable Iss. Rate	83%		79%		79%		79%		100%	
<i>Non - Violations</i>										
	<i>Quantity</i>	<i>% Non-Viol</i>	<i>Quantity</i>	<i>% Non-Viol</i>	<i>Quantity</i>	<i>% Non-Viol</i>	<i>Quantity</i>	<i>% Non-Viol</i>	<i>Quantity</i>	<i>% Non-Viol</i>
Rear Axle Violation	0	0%	0	0%	2	0%	0	0%	0	0%
Right Turn	0	0%	0	0%	0	0%	0	0%	0	0%
No Violation Occurred	149	100%	131	100%	1,562	100%	130	100%	58	100%
Total Non Violations	149	100%	131	100%	1,564	100%	130	100%	58	100%
<i>Uncontrollable Non-Iss</i>										
	<i>Quantity</i>	<i>% of Un.Non</i>	<i>Quantity</i>	<i>% of Un.Non</i>	<i>Quantity</i>	<i>% of Un.Non</i>	<i>Quantity</i>	<i>% of Un.Non</i>	<i>Quantity</i>	<i>% of Un.Non</i>
No Plate	1	3%	1	4%	13	3%	1	3%	0	0%
Out of State Plate	0	0%	0	0%	0	0%	0	0%	0	0%
Glare on Plate	0	0%	1	2%	4	1%	0	1%	0	0%
Illegible Plate	0	0%	0	0%	6	2%	1	2%	0	0%
Plate Obstructed	0	0%	1	2%	2	1%	0	1%	0	0%
Windshield Glare	0	0%	0	1%	5	1%	0	1%	0	0%
Driver Obstructed	4	14%	2	7%	21	6%	2	6%	0	0%
Car Obstructed	6	21%	1	4%	23	6%	2	6%	1	11%
Emergency Vehicle	18	62%	28	79%	290	78%	24	78%	8	89%
No DMV Match Found	0	0%	0	1%	5	1%	0	1%	0	0%
LASD Expired	0	0%	0	1%	5	1%	0	1%	0	0%
Other	0	0%	0	0%	0	0%	0	0%	0	0%
Total	29	100%	35	100%	374	100%	31	100%	9	100%
<i>Controllable Non-Iss</i>										
	<i>Quantity</i>	<i>% Cont. Non</i>	<i>Quantity</i>	<i>% Cont. Non</i>	<i>Quantity</i>	<i>% Cont. Non</i>	<i>Quantity</i>	<i>% Cont. Non</i>	<i>Quantity</i>	<i>% Cont. Non</i>
Framing of Plate	0	0%	1	43%	6	23%	1	23%	0	0%
Focus / Clarity of Plate	0	0%	0	0%	3	12%	0	12%	0	0%
Dark Interior	1	100%	0	0%	5	19%	0	19%	0	0%
Framing of Driver	0	0%	0	0%	0	0%	0	0%	0	0%
Focus / Clarity of Driver	0	0%	0	0%	0	0%	0	0%	0	0%
Framing of Car	0	0%	1	43%	9	35%	1	35%	0	0%
Data Error	0	0%	0	0%	0	0%	0	0%	0	0%
Exposure	0	0%	0	0%	0	0%	0	0%	0	0%
Equipment Malfunction	0	0%	0	0%	0	0%	0	0%	0	0%
LASD Return	0	0%	0	14%	3	12%	0	12%	0	0%
ACS Expired	0	0%	0	0%	0	0%	0	0%	0	0%
Total	1	100%	2	100%	26	100%	2	100%	0	100%



A Xerox Company

Los Angeles County MTA Gold Line Approach Summary Report Location 4069: WB to SB 3rd @ Downey

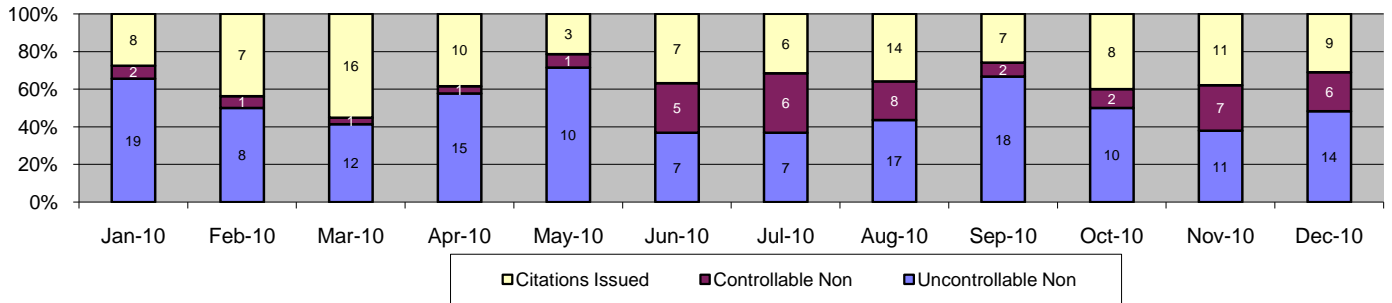


Events	Dec-10		3 Month Average		Year to Date Total		Year to Date Average		2009 Average	
	Quantity	% of Events	Quantity	% of Events	Quantity	% of Events	Quantity	% of Events	Quantity	% of Events
Non Violations	1,154	88%	1,119	92%	14,201	90%	1,183	90%	555	97%
Violations	154	12%	131	10%	1,492	10%	124	10%	15	3%
Total Events	1,308	100%	1,249	100%	15,693	100%	1,308	100%	570	100%
Violations										
	Quantity	% of Viol	Quantity	% of Viol	Quantity	% of Viol	Quantity	% of Viol	Quantity	% of Viol
Uncont. Non-Issued Viol	74	48%	76	58%	737	49%	61	49%	8	53%
Cont. Non-Issued Viol	6	4%	11	8%	216	14%	18	14%	2	13%
Citations	74	48%	44	34%	539	36%	45	36%	5	33%
Daily Av. Vehicle Counts	892		974		11,023		919		923	
Av. Violation Speed	27.3		26.7		26.5		26.5		17.9	
Av. Issued Speed	27.7		24.9		26.3		26.3		20.6	
Av. Violation Sec.	48.2		46.1		43.8		43.8		31.3	
Av. Issued Sec.	42.1		39.2		38.0		38.0		23.8	
Cal. Days/Enforc. Days	31	31	30	30	365	365	30	30	31	31
Daily Citation Yield	2.39	2.39	1.45	1.45	1.48	1.48	1.48	1.48	0.16	0.16
Cit/Viol. Iss. Rate	48%		36%		36%		36%		33%	
Controllable Iss. Rate	93%		71%		71%		71%		71%	
Non - Violations										
	Quantity	% Non-Viol	Quantity	% Non-Viol	Quantity	% Non-Viol	Quantity	% Non-Viol	Quantity	% Non-Viol
Rear Axle Violation	0	0%	0	0%	1	0%	0	0%	0	0%
Right Turn	0	0%	0	0%	0	0%	0	0%	0	0%
No Violation Occurred	1,154	100%	1,118	100%	14,200	100%	1,183	100%	555	100%
Total Non Violations	1,154	100%	1,119	100%	14,201	100%	1,183	100%	555	100%
Uncontrollable Non-Iss										
	Quantity	% of Un.Non	Quantity	% of Un.Non	Quantity	% of Un.Non	Quantity	% of Un.Non	Quantity	% of Un.Non
No Plate	10	14%	8	10%	87	12%	7	12%	3	38%
Out of State Plate	2	3%	0	0%	10	1%	1	1%	0	0%
Glare on Plate	0	0%	0	0%	0	0%	0	0%	0	0%
Illegible Plate	0	0%	0	0%	3	0%	0	0%	0	0%
Plate Obstructed	0	0%	1	1%	8	1%	1	1%	0	0%
Windshield Glare	1	1%	2	3%	35	5%	3	5%	0	0%
Driver Obstructed	1	1%	1	1%	10	1%	1	1%	0	0%
Car Obstructed	1	1%	3	4%	27	4%	2	4%	0	0%
Emergency Vehicle	34	46%	45	60%	381	52%	32	52%	3	38%
No DMV Match Found	15	20%	12	16%	133	18%	11	18%	1	13%
LASD Expired	0	0%	1	2%	26	4%	2	4%	0	0%
Other	10	14%	1	1%	17	2%	1	2%	1	13%
Total	74	100%	76	100%	737	100%	61	100%	8	100%
Controllable Non-Iss										
	Quantity	% Cont. Non	Quantity	% Cont. Non	Quantity	% Cont. Non	Quantity	% Cont. Non	Quantity	% Cont. Non
Framing of Plate	0	0%	0	0%	1	0%	0	0%	0	0%
Focus / Clarity of Plate	0	0%	0	0%	0	0%	0	0%	0	0%
Dark Interior	0	0%	0	3%	1	0%	0	0%	0	0%
Framing of Driver	0	0%	0	0%	0	0%	0	0%	0	0%
Focus / Clarity of Driver	0	0%	0	0%	0	0%	0	0%	0	0%
Framing of Car	1	17%	0	3%	5	2%	0	2%	0	0%
Data Error	0	0%	0	0%	1	0%	0	0%	0	0%
Exposure	0	0%	0	3%	1	0%	0	0%	0	0%
Equipment Malfunction	0	0%	0	0%	1	0%	0	0%	0	0%
LASD Return	5	83%	10	91%	205	95%	17	95%	2	100%
ACS Expired	0	0%	0	0%	1	0%	0	0%	0	0%
Total	6	100%	11	100%	216	100%	18	100%	2	100%



A Xerox Company

Los Angeles County MTA Gold Line Approach Summary Report Location 4077: EB to NB 3rd @ Gage

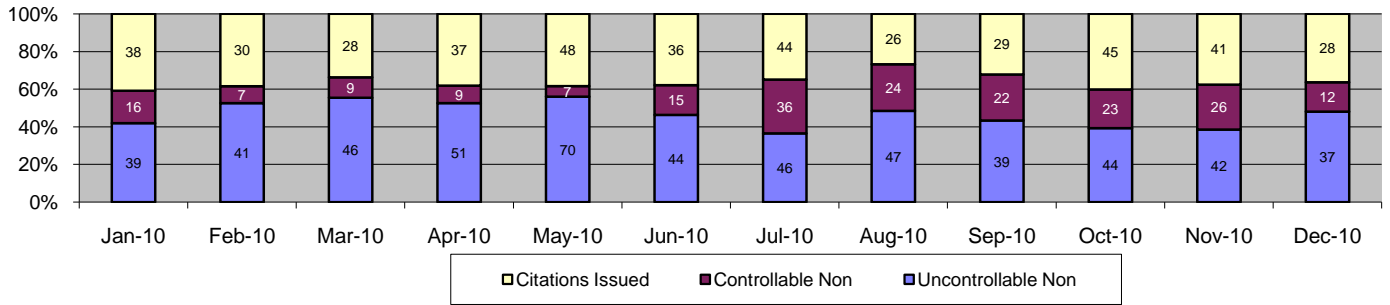


Events	Dec-10		3 Month Average		Year to Date Total		Year to Date Average		2009 Average	
	Quantity	% of Events	Quantity	% of Events	Quantity	% of Events	Quantity	% of Events	Quantity	% of Events
Non Violations	145	83%	156	89%	1,989	87%	166	87%	67	87%
Violations	29	17%	25	11%	296	13%	25	13%	10	13%
Total Events	174	100%	182	100%	2,285	100%	190	100%	77	100%
Violations										
	Quantity	% of Viol	Quantity	% of Viol	Quantity	% of Viol	Quantity	% of Viol	Quantity	% of Viol
Uncont. Non-Issued Viol	14	48%	13	51%	148	50%	12	50%	3	30%
Cont. Non-Issued Viol	6	21%	4	14%	42	14%	4	14%	1	10%
Citations	9	31%	9	34%	106	36%	9	36%	6	60%
Daily Av. Vehicle Counts	588		613		6,883		574		513	
Av. Violation Speed	20.0		19.2		19.4		19.4		18.7	
Av. Issued Speed	20.4		18.1		19.1		19.1		18.8	
Av. Violation Sec.	37.1		17.4		27.7		27.7		43.9	
Av. Issued Sec.	15.1		6.7		18.1		18.1		37.3	
Cal. Days/Enforc. Days	31	31	30	30	365	365	30	30	31	31
Daily Citation Yield	0.29	0.29	0.29	0.29	0.29	0.29	0.29	0.29	0.19	0.19
Cit/Viol. Iss. Rate	31%		36%		36%		36%		60%	
Controllable Iss. Rate	60%		72%		72%		72%		86%	
Non - Violations										
	Quantity	% Non-Viol	Quantity	% Non-Viol	Quantity	% Non-Viol	Quantity	% Non-Viol	Quantity	% Non-Viol
Rear Axle Violation	0	0%	0	0%	0	0%	0	0%	0	0%
Right Turn	0	0%	0	0%	0	0%	0	0%	0	0%
No Violation Occurred	145	100%	156	100%	1,989	100%	166	100%	67	100%
Total Non Violations	145	100%	156	100%	1,989	100%	166	100%	67	100%
Uncontrollable Non-Iss										
	Quantity	% of Un.Non	Quantity	% of Un.Non	Quantity	% of Un.Non	Quantity	% of Un.Non	Quantity	% of Un.Non
No Plate	1	7%	1	8%	23	16%	2	16%	1	33%
Out of State Plate	0	0%	0	3%	3	2%	0	2%	0	0%
Glare on Plate	0	0%	0	0%	0	0%	0	0%	0	0%
Illegible Plate	0	0%	1	8%	6	4%	1	4%	0	0%
Plate Obstructed	1	7%	0	0%	4	3%	0	3%	0	0%
Windshield Glare	0	0%	1	5%	10	7%	1	7%	0	0%
Driver Obstructed	3	21%	3	21%	20	14%	2	14%	0	0%
Car Obstructed	5	36%	2	18%	24	16%	2	16%	1	33%
Emergency Vehicle	0	0%	2	13%	15	10%	1	10%	0	0%
No DMV Match Found	0	0%	3	23%	33	22%	3	22%	1	33%
LASD Expired	0	0%	0	3%	6	4%	1	4%	0	0%
Other	4	29%	0	0%	4	3%	0	3%	0	0%
Total	14	100%	13	100%	148	100%	12	100%	3	100%
Controllable Non-Iss										
	Quantity	% Cont. Non	Quantity	% Cont. Non	Quantity	% Cont. Non	Quantity	% Cont. Non	Quantity	% Cont. Non
Framing of Plate	2	33%	1	27%	9	21%	1	21%	0	0%
Focus / Clarity of Plate	0	0%	0	0%	3	7%	0	7%	0	0%
Dark Interior	0	0%	0	0%	1	2%	0	2%	0	0%
Framing of Driver	1	17%	0	9%	3	7%	0	7%	0	0%
Focus / Clarity of Driver	0	0%	0	0%	0	0%	0	0%	0	0%
Framing of Car	0	0%	0	0%	2	5%	0	5%	0	0%
Data Error	0	0%	0	0%	0	0%	0	0%	0	0%
Exposure	3	50%	0	0%	3	7%	0	7%	1	100%
Equipment Malfunction	0	0%	0	0%	0	0%	0	0%	0	0%
LASD Return	0	0%	2	64%	21	50%	2	50%	0	0%
ACS Expired	0	0%	0	0%	0	0%	0	0%	0	0%
Total	6	100%	4	100%	42	100%	4	100%	1	100%



A Xerox Company

Los Angeles County MTA Gold Line Approach Summary Report Location 4079: WB to SB 3rd @ Gage

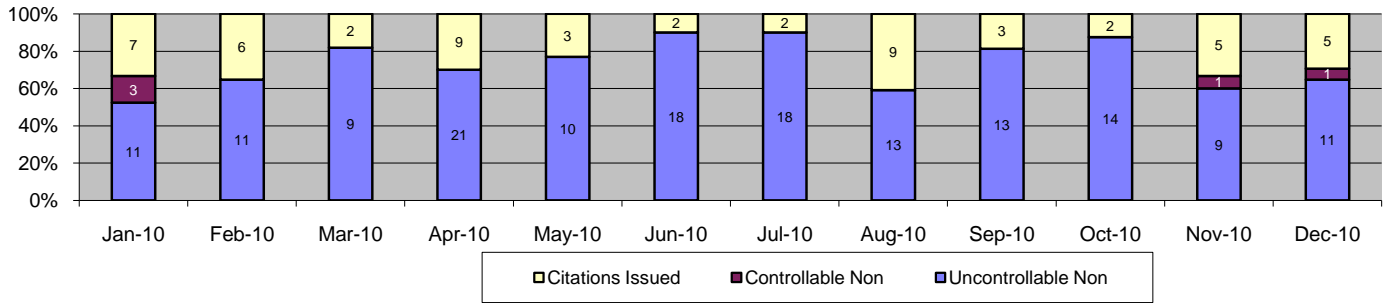


Events	Dec-10		3 Month Average		Year to Date Total		Year to Date Average		2009 Average	
	Quantity	% of Events	Quantity	% of Events	Quantity	% of Events	Quantity	% of Events	Quantity	% of Events
Non Violations	355	82%	273	77%	3,535	75%	295	75%	131	71%
Violations	77	18%	104	25%	1,182	25%	99	25%	53	29%
Total Events	432	100%	377	100%	4,717	100%	393	100%	184	100%
<i>Violations</i>										
	Quantity	% of Viol	Quantity	% of Viol	Quantity	% of Viol	Quantity	% of Viol	Quantity	% of Viol
Uncont. Non-Issued Viol	37	48%	42	40%	546	46%	46	46%	27	51%
Cont. Non-Issued Viol	12	16%	24	23%	206	17%	17	17%	7	13%
Citations	28	36%	38	37%	430	36%	36	36%	19	36%
Daily Av. Vehicle Counts	1,187		1,326		14,848		1,237		1,120	
Av. Violation Speed	18.4		17.7		18.0		18.0		17.9	
Av. Issued Speed	17.3		17.9		17.9		17.9		18.1	
Av. Violation Sec.	33.2		27.4		30.1		30.1		25.3	
Av. Issued Sec.	29.4		27.1		26.2		26.2		18.1	
Cal. Days/Enforc. Days	31	31	30	30	365	365	30	30	31	31
Daily Citation Yield	0.90	0.90	1.26	1.26	1.18	1.18	1.18	1.18	0.61	0.61
Cit/Viol. Iss. Rate	36%		36%		36%		36%		36%	
Controllable Iss. Rate	70%		68%		68%		68%		73%	
<i>Non - Violations</i>										
	Quantity	% Non-Viol	Quantity	% Non-Viol	Quantity	% Non-Viol	Quantity	% Non-Viol	Quantity	% Non-Viol
Rear Axle Violation	0	0%	0	0%	4	0%	0	0%	0	0%
Right Turn	0	0%	0	0%	0	0%	0	0%	0	0%
No Violation Occurred	355	100%	273	100%	3,531	100%	294	100%	131	100%
Total Non Violations	355	100%	273	100%	3,535	100%	295	100%	131	100%
<i>Uncontrollable Non-Iss</i>										
	Quantity	% of Un.Non	Quantity	% of Un.Non	Quantity	% of Un.Non	Quantity	% of Un.Non	Quantity	% of Un.Non
No Plate	5	14%	11	26%	120	22%	10	22%	5	19%
Out of State Plate	1	3%	1	2%	21	4%	2	4%	2	7%
Glare on Plate	1	3%	0	1%	6	1%	1	1%	0	0%
Illegible Plate	0	0%	0	0%	2	0%	0	0%	1	4%
Plate Obstructed	1	3%	0	1%	7	1%	1	1%	0	0%
Windshield Glare	0	0%	0	1%	13	2%	1	2%	0	0%
Driver Obstructed	3	8%	6	15%	60	11%	5	11%	1	4%
Car Obstructed	7	19%	5	11%	46	8%	4	8%	0	0%
Emergency Vehicle	8	22%	11	27%	156	29%	13	29%	12	44%
No DMV Match Found	5	14%	6	14%	74	14%	6	14%	6	22%
LASD Expired	0	0%	1	2%	35	6%	3	6%	0	0%
Other	6	16%	0	0%	6	1%	1	1%	0	0%
Total	37	100%	42	100%	546	100%	46	100%	27	100%
<i>Controllable Non-Iss</i>										
	Quantity	% Cont. Non	Quantity	% Cont. Non	Quantity	% Cont. Non	Quantity	% Cont. Non	Quantity	% Cont. Non
Framing of Plate	2	17%	4	17%	33	16%	3	16%	0	0%
Focus / Clarity of Plate	0	0%	0	0%	3	1%	0	1%	0	0%
Dark Interior	0	0%	0	1%	1	0%	0	0%	0	0%
Framing of Driver	6	50%	6	25%	83	40%	7	40%	6	86%
Focus / Clarity of Driver	0	0%	0	0%	2	1%	0	1%	0	0%
Framing of Car	2	17%	1	3%	9	4%	1	4%	1	14%
Data Error	0	0%	0	0%	0	0%	0	0%	0	0%
Exposure	0	0%	0	0%	0	0%	0	0%	0	0%
Equipment Malfunction	0	0%	0	0%	0	0%	0	0%	0	0%
LASD Return	2	17%	12	52%	74	36%	6	36%	0	0%
ACS Expired	0	0%	0	1%	1	0%	0	0%	0	0%
Total	12	100%	24	100%	206	100%	17	100%	7	100%



A Xerox Company

Los Angeles County MTA Gold Line Approach Summary Report Location 4087: EB to NB 1st @ Lorena

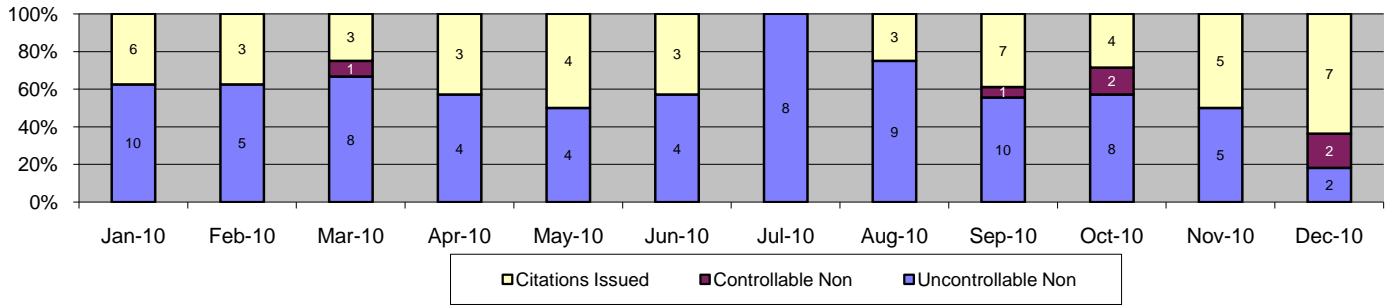


Events	Dec-10		3 Month Average		Year to Date Total		Year to Date Average		2009 Average	
	Quantity	% of Events	Quantity	% of Events	Quantity	% of Events	Quantity	% of Events	Quantity	% of Events
Non Violations	633	97%	600	97%	7,252	97%	604	97%	342	99%
Violations	17	3%	16	3%	218	3%	18	3%	4	1%
Total Events	650	100%	616	100%	7,470	100%	623	100%	346	100%
Violations										
	Quantity	% of Viol	Quantity	% of Viol	Quantity	% of Viol	Quantity	% of Viol	Quantity	% of Viol
Uncont. Non-Issued Viol	11	65%	12	77%	158	72%	13	72%	2	50%
Cont. Non-Issued Viol	1	6%	0	2%	5	2%	0	2%	0	0%
Citations	5	29%	3	21%	55	25%	5	25%	2	50%
Daily Av. Vehicle Counts	840		919		11,045		920		894	
Av. Violation Speed	17.9		17.5		18.5		18.5		19.5	
Av. Issued Speed	20.0		19.2		20.6		20.6		19.5	
Av. Violation Sec.	63.5		48.8		43.5		43.5		50.0	
Av. Issued Sec.	40.3		9.4		30.7		30.7		50.0	
Cal. Days/Enforc. Days	31	31	30	30	365	365	30	30	31	31
Daily Citation Yield	0.16	0.16	0.11	0.11	0.15	0.15	0.15	0.15	0.06	0.06
Cit / Viol. Iss. Rate	29%		25%		25%		25%		50%	
Controllable Iss. Rate	83%		92%		92%		92%		100%	
Non - Violations										
	Quantity	% Non-Viol	Quantity	% Non-Viol	Quantity	% Non-Viol	Quantity	% Non-Viol	Quantity	% Non-Viol
Rear Axle Violation	0	0%	0	0%	0	0%	0	0%	0	0%
Right Turn	0	0%	0	0%	0	0%	0	0%	0	0%
No Violation Occurred	633	100%	600	100%	7,252	100%	604	100%	342	100%
Total Non Violations	633	100%	600	100%	7,252	100%	604	100%	342	100%
Uncontrollable Non-Iss										
	Quantity	% of Un.Non	Quantity	% of Un.Non	Quantity	% of Un.Non	Quantity	% of Un.Non	Quantity	% of Un.Non
No Plate	0	0%	1	8%	12	8%	1	8%	0	0%
Out of State Plate	0	0%	0	3%	3	2%	0	2%	0	0%
Glare on Plate	0	0%	0	0%	1	1%	0	1%	0	0%
Illegible Plate	0	0%	0	0%	3	2%	0	2%	0	0%
Plate Obstructed	0	0%	0	0%	1	1%	0	1%	1	50%
Windshield Glare	1	9%	0	3%	6	4%	1	4%	0	0%
Driver Obstructed	0	0%	0	0%	3	2%	0	2%	0	0%
Car Obstructed	8	73%	8	69%	83	53%	7	53%	1	50%
Emergency Vehicle	1	9%	1	8%	11	7%	1	7%	0	0%
No DMV Match Found	1	9%	1	8%	31	20%	3	20%	0	0%
LASD Expired	0	0%	0	0%	4	3%	0	3%	0	0%
Other	0	0%	0	0%	0	0%	0	0%	0	0%
Total	11	100%	12	100%	158	100%	13	100%	2	100%
Controllable Non-Iss										
	Quantity	% Cont. Non	Quantity	% Cont. Non	Quantity	% Cont. Non	Quantity	% Cont. Non	Quantity	% Cont. Non
Framing of Plate	0	0%	0	100%	2	40%	0	40%	0	0%
Focus / Clarity of Plate	0	0%	0	0%	0	0%	0	0%	0	0%
Dark Interior	0	0%	0	0%	0	0%	0	0%	0	0%
Framing of Driver	0	0%	0	0%	0	0%	0	0%	0	0%
Focus / Clarity of Driver	0	0%	0	0%	0	0%	0	0%	0	0%
Framing of Car	0	0%	0	0%	1	20%	0	20%	0	0%
Data Error	0	0%	0	0%	0	0%	0	0%	0	0%
Exposure	0	0%	0	0%	0	0%	0	0%	0	0%
Equipment Malfunction	0	0%	0	0%	0	0%	0	0%	0	0%
LASD Return	1	100%	0	0%	2	40%	0	40%	0	0%
ACS Expired	0	0%	0	0%	0	0%	0	0%	0	0%
Total	1	100%	0	100%	5	100%	0	100%	0	100%



A xerox Company

Los Angeles County MTA Gold Line Approach Summary Report Location 4089: WB to SB 1st @ Lorena

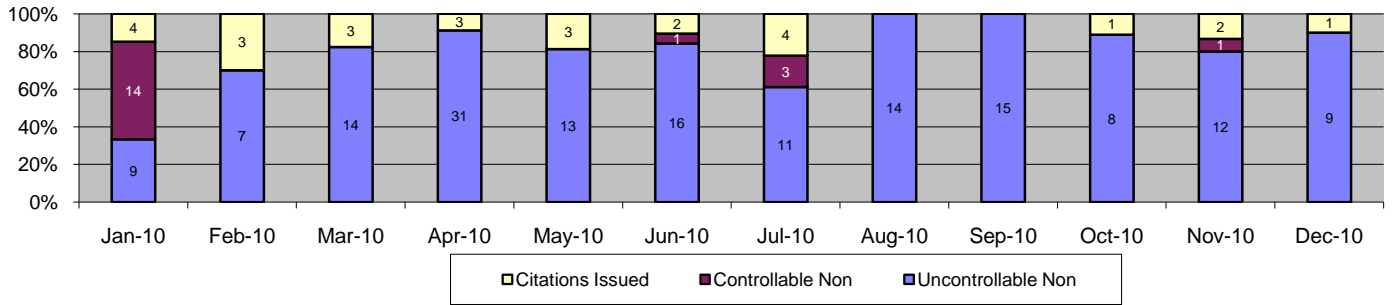


Events	Dec-10		3 Month Average		Year to Date Total		Year to Date Average		2009 Average	
	Quantity	% of Events	Quantity	% of Events	Quantity	% of Events	Quantity	% of Events	Quantity	% of Events
Non Violations	260	96%	263	97%	3,023	96%	252	96%	93	95%
Violations	11	4%	14	3%	131	4%	11	4%	5	5%
Total Events	271	100%	277	100%	3,154	100%	263	100%	98	100%
<i>Violations</i>										
	Quantity	% of Viol	Quantity	% of Viol	Quantity	% of Viol	Quantity	% of Viol	Quantity	% of Viol
Uncont. Non-Issued Viol	2	18%	8	55%	77	59%	6	59%	1	20%
Cont. Non-Issued Viol	2	18%	1	7%	6	5%	1	5%	0	0%
Citations	7	64%	5	38%	48	37%	4	37%	4	80%
Daily Av. Vehicle Counts	634		617		6,777		565		333	
Av. Violation Speed	17.5		18.1		18.8		18.8		20.8	
Av. Issued Speed	18.6		19.2		17.9		17.9		20.8	
Av. Violation Sec.	20.8		43.0		46.8		46.8		50.5	
Av. Issued Sec.	25.0		30.2		23.0		23.0		50.5	
Cal. Days/Enforc. Days	31	31	30	30	365	365	30	30	31	31
Daily Citation Yield	0.23	0.23	0.18	0.18	0.13	0.13	0.13	0.13	0.13	0.13
Cit/Viol. Iss. Rate	64%		37%		37%		37%		80%	
Controllable Iss. Rate	78%		89%		89%		89%		100%	
<i>Non - Violations</i>										
	Quantity	% Non-Viol	Quantity	% Non-Viol	Quantity	% Non-Viol	Quantity	% Non-Viol	Quantity	% Non-Viol
Rear Axle Violation	0	0%	0	0%	0	0%	0	0%	0	0%
Right Turn	0	0%	0	0%	0	0%	0	0%	0	0%
No Violation Occurred	260	100%	263	100%	3,023	100%	252	100%	93	100%
Total Non Violations	260	100%	263	100%	3,023	100%	252	100%	93	100%
<i>Uncontrollable Non-Iss</i>										
	Quantity	% of Un.Non	Quantity	% of Un.Non	Quantity	% of Un.Non	Quantity	% of Un.Non	Quantity	% of Un.Non
No Plate	0	0%	0	4%	5	6%	0	6%	0	0%
Out of State Plate	0	0%	1	13%	3	4%	0	4%	0	0%
Glare on Plate	0	0%	0	0%	0	0%	0	0%	0	0%
Illegible Plate	0	0%	0	0%	1	1%	0	1%	0	0%
Plate Obstructed	0	0%	0	0%	0	0%	0	0%	0	0%
Windshield Glare	0	0%	0	4%	1	1%	0	1%	0	0%
Driver Obstructed	0	0%	1	9%	6	8%	1	8%	0	0%
Car Obstructed	0	0%	1	13%	25	32%	2	32%	1	100%
Emergency Vehicle	1	50%	1	9%	8	10%	1	10%	0	0%
No DMV Match Found	1	50%	4	48%	25	32%	2	32%	0	0%
LASD Expired	0	0%	0	0%	3	4%	0	4%	0	0%
Other	0	0%	0	0%	0	0%	0	0%	0	0%
Total	2	100%	8	100%	77	100%	6	100%	1	100%
<i>Controllable Non-Iss</i>										
	Quantity	% Cont. Non	Quantity	% Cont. Non	Quantity	% Cont. Non	Quantity	% Cont. Non	Quantity	% Cont. Non
Framing of Plate	2	100%	1	67%	4	67%	0	67%	0	0%
Focus / Clarity of Plate	0	0%	0	0%	0	0%	0	0%	0	0%
Dark Interior	0	0%	0	0%	1	17%	0	17%	0	0%
Framing of Driver	0	0%	0	0%	0	0%	0	0%	0	0%
Focus / Clarity of Driver	0	0%	0	0%	0	0%	0	0%	0	0%
Framing of Car	0	0%	0	0%	0	0%	0	0%	0	0%
Data Error	0	0%	0	33%	1	17%	0	17%	0	0%
Exposure	0	0%	0	0%	0	0%	0	0%	0	0%
Equipment Malfunction	0	0%	0	0%	0	0%	0	0%	0	0%
LASD Return	0	0%	0	0%	0	0%	0	0%	0	0%
ACS Expired	0	0%	0	0%	0	0%	0	0%	0	0%
Total	2	100%	1	100%	6	100%	1	100%	0	100%



A Xerox Company

Los Angeles County MTA Gold Line Approach Summary Report Location 4097: EB to NB 1st @Clarence

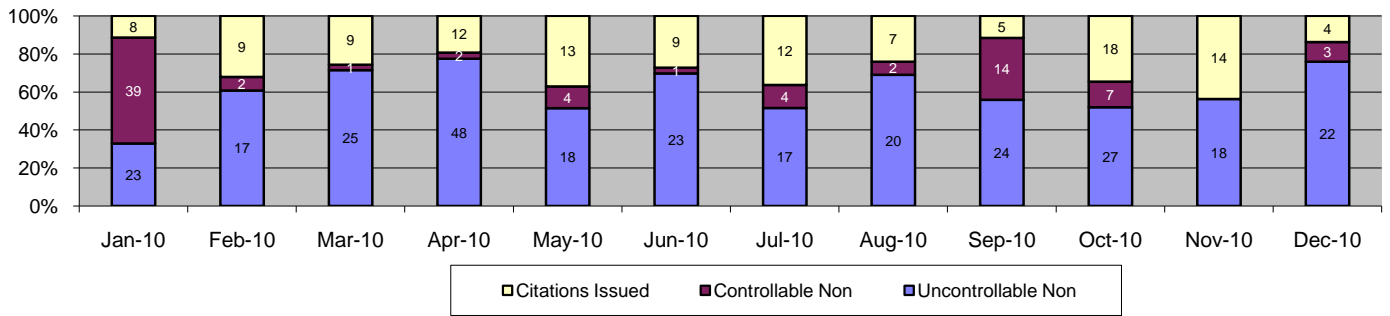


Events	Dec-10		3 Month Average		Year to Date Total		Year to Date Average		2009 Average	
	Quantity	% of Events	Quantity	% of Events	Quantity	% of Events	Quantity	% of Events	Quantity	% of Events
Non Violations	548	98%	471	97%	6,723	97%	560	97%	251	99%
Violations	10	2%	13	3%	204	3%	17	3%	2	1%
Total Events	558	100%	484	100%	6,927	100%	577	100%	253	100%
<i>Violations</i>										
	Quantity	% of Viol	Quantity	% of Viol	Quantity	% of Viol	Quantity	% of Viol	Quantity	% of Viol
Uncont. Non-Issued Viol	9	90%	12	90%	159	78%	13	78%	2	100%
Cont. Non-Issued Viol	0	0%	0	3%	19	9%	2	9%	0	0%
Citations	1	10%	1	8%	26	13%	2	13%	0	0%
Daily Av. Vehicle Counts	201		178		2,078		173		158	
Av. Violation Speed	21.2		21.0		21.2		21.2		0.0	
Av. Issued Speed	20.0		11.7		14.4		14.4		0.0	
Av. Violation Sec.	79.0		95.2		89.3		89.3		0.0	
Av. Issued Sec.	99.9		25.7		62.9		62.9		0.0	
Cal. Days/Enforc. Days	31	31	30	30	365	365	30	30	31	31
Daily Citation Yield	0.03	0.03	0.03	0.03	0.07	0.07	0.07	0.07	0.00	0.00
Cit/Viol. Iss. Rate	10%		13%		13%		13%		0%	
Controllable Iss. Rate	0%		0%		0%		0%		0%	
<i>Non - Violations</i>										
	Quantity	% Non-Viol	Quantity	% Non-Viol	Quantity	% Non-Viol	Quantity	% Non-Viol	Quantity	% Non-Viol
Rear Axle Violation	0	0%	0	0%	0	0%	0	0%	0	0%
Right Turn	0	0%	0	0%	0	0%	0	0%	0	0%
No Violation Occurred	548	100%	471	100%	6,723	100%	560	100%	251	100%
Total Non Violations	548	100%	471	100%	6,723	100%	560	100%	251	100%
<i>Uncontrollable Non-Iss</i>										
	Quantity	% of Un.Non	Quantity	% of Un.Non	Quantity	% of Un.Non	Quantity	% of Un.Non	Quantity	% of Un.Non
No Plate	1	11%	0	3%	10	6%	1	6%	1	50%
Out of State Plate	0	0%	0	0%	0	0%	0	0%	0	0%
Glare on Plate	0	0%	0	0%	0	0%	0	0%	0	0%
Illegible Plate	0	0%	0	0%	2	1%	0	1%	0	0%
Plate Obstructed	0	0%	0	0%	0	0%	0	0%	0	0%
Windshield Glare	0	0%	0	3%	2	1%	0	1%	0	0%
Driver Obstructed	1	11%	1	6%	3	2%	0	2%	0	0%
Car Obstructed	5	56%	9	77%	122	77%	10	77%	0	0%
Emergency Vehicle	2	22%	1	6%	18	11%	2	11%	1	50%
No DMV Match Found	0	0%	1	6%	2	1%	0	1%	0	0%
LASD Expired	0	0%	0	0%	0	0%	0	0%	0	0%
Other	0	0%	0	0%	0	0%	0	0%	0	0%
Total	9	100%	12	100%	159	100%	13	100%	2	100%
<i>Controllable Non-Iss</i>										
	Quantity	% Cont. Non	Quantity	% Cont. Non	Quantity	% Cont. Non	Quantity	% Cont. Non	Quantity	% Cont. Non
Framing of Plate	0	0%	0	0%	3	16%	0	16%	0	0%
Focus / Clarity of Plate	0	0%	0	0%	0	0%	0	0%	0	0%
Dark Interior	0	0%	0	0%	0	0%	0	0%	0	0%
Framing of Driver	0	0%	0	100%	2	11%	0	11%	0	0%
Focus / Clarity of Driver	0	0%	0	0%	0	0%	0	0%	0	0%
Framing of Car	0	0%	0	0%	14	74%	1	74%	0	0%
Data Error	0	0%	0	0%	0	0%	0	0%	0	0%
Exposure	0	0%	0	0%	0	0%	0	0%	0	0%
Equipment Malfunction	0	0%	0	0%	0	0%	0	0%	0	0%
LASD Return	0	0%	0	0%	0	0%	0	0%	0	0%
ACS Expired	0	0%	0	0%	0	0%	0	0%	0	0%
Total	0	100%	0	100%	19	100%	2	100%	0	100%



A Xerox Company

Los Angeles County MTA Gold Line Approach Summary Report Location 4099: WB to SB 1st @ Clarence

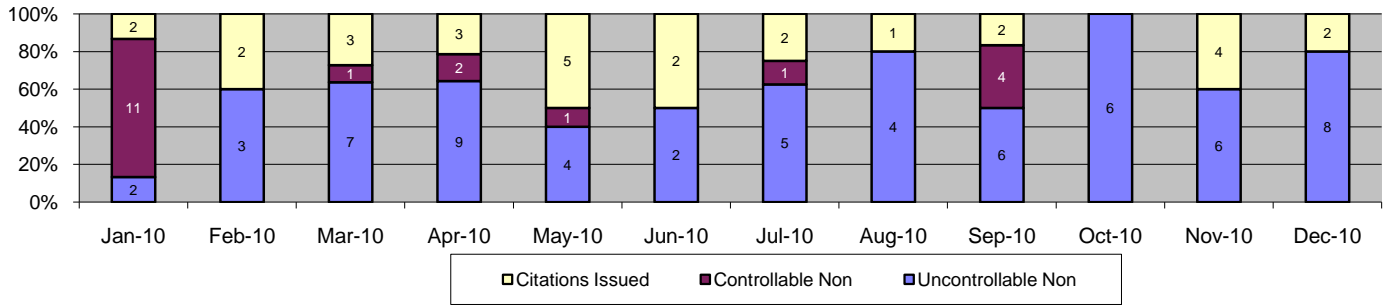


Events	Dec-10		3 Month Average		Year to Date Total		Year to Date Average		2009 Average	
	Quantity	% of Events	Quantity	% of Events	Quantity	% of Events	Quantity	% of Events	Quantity	% of Events
Non Violations	953	97%	889	97%	11,640	96%	970	96%	404	95%
Violations	29	3%	42	4%	481	4%	40	4%	23	5%
Total Events	982	100%	931	100%	12,121	100%	1,010	100%	427	100%
Violations										
	Quantity	% of Viol	Quantity	% of Viol	Quantity	% of Viol	Quantity	% of Viol	Quantity	% of Viol
Uncont. Non-Issued Viol	22	76%	23	54%	282	59%	24	59%	11	48%
Cont. Non-Issued Viol	3	10%	7	17%	79	16%	7	16%	2	9%
Citations	4	14%	12	29%	120	25%	10	25%	10	43%
Daily Av. Vehicle Counts	473		560		6,918		577		507	
Av. Violation Speed	19.2		19.0		19.2		19.2		17.6	
Av. Issued Speed	13.5		17.6		17.4		17.4		18.0	
Av. Violation Sec.	68.0		58.4		60.5		60.5		50.8	
Av. Issued Sec.	60.9		50.3		57.5		57.5		45.9	
Cal. Days/Enforc. Days	31	31	30	30	365	365	30	30	31	31
Daily Citation Yield	0.13	0.13	0.41	0.41	0.33	0.33	0.33	0.33	0.32	0.32
Cit/Viol. Iss. Rate	14%		25%		25%		25%		43%	
Controllable Iss. Rate	57%		60%		60%		60%		83%	
Non - Violations										
	Quantity	% Non-Viol	Quantity	% Non-Viol	Quantity	% Non-Viol	Quantity	% Non-Viol	Quantity	% Non-Viol
Rear Axle Violation	0	0%	0	0%	1	0%	0	0%	0	0%
Right Turn	0	0%	0	0%	0	0%	0	0%	0	0%
No Violation Occurred	953	100%	889	100%	11,639	100%	970	100%	404	100%
Total Non Violations	953	100%	889	100%	11,640	100%	970	100%	404	100%
Uncontrollable Non-Iss										
	Quantity	% of Un.Non	Quantity	% of Un.Non	Quantity	% of Un.Non	Quantity	% of Un.Non	Quantity	% of Un.Non
No Plate	1	5%	4	16%	36	13%	3	13%	4	36%
Out of State Plate	0	0%	1	6%	12	4%	1	4%	2	18%
Glare on Plate	0	0%	0	0%	0	0%	0	0%	0	0%
Illegible Plate	0	0%	0	1%	2	1%	0	1%	0	0%
Plate Obstructed	0	0%	0	0%	1	0%	0	0%	0	0%
Windshield Glare	0	0%	1	3%	11	4%	1	4%	1	9%
Driver Obstructed	2	9%	2	7%	11	4%	1	4%	0	0%
Car Obstructed	14	64%	11	46%	139	49%	12	49%	1	9%
Emergency Vehicle	5	23%	2	10%	42	15%	4	15%	2	18%
No DMV Match Found	0	0%	2	10%	20	7%	2	7%	1	9%
LASD Expired	0	0%	0	0%	8	3%	1	3%	0	0%
Other	0	0%	0	0%	0	0%	0	0%	0	0%
Total	22	100%	23	100%	282	100%	24	100%	11	100%
Controllable Non-Iss										
	Quantity	% Cont. Non	Quantity	% Cont. Non	Quantity	% Cont. Non	Quantity	% Cont. Non	Quantity	% Cont. Non
Framing of Plate	0	0%	0	0%	2	3%	0	3%	0	0%
Focus / Clarity of Plate	0	0%	1	10%	2	3%	0	3%	0	0%
Dark Interior	2	67%	2	33%	19	24%	2	24%	0	0%
Framing of Driver	1	33%	0	5%	7	9%	1	9%	1	50%
Focus / Clarity of Driver	0	0%	0	0%	0	0%	0	0%	0	0%
Framing of Car	0	0%	3	48%	45	57%	4	57%	1	50%
Data Error	0	0%	0	0%	0	0%	0	0%	0	0%
Exposure	0	0%	0	0%	2	3%	0	3%	0	0%
Equipment Malfunction	0	0%	0	0%	0	0%	0	0%	0	0%
LASD Return	0	0%	0	5%	2	3%	0	3%	0	0%
ACS Expired	0	0%	0	0%	0	0%	0	0%	0	0%
Total	3	100%	7	100%	79	100%	7	100%	2	100%



A Xerox Company

Los Angeles County MTA Gold Line Approach Summary Report Location 4109: WB to SB 1st @ Utah

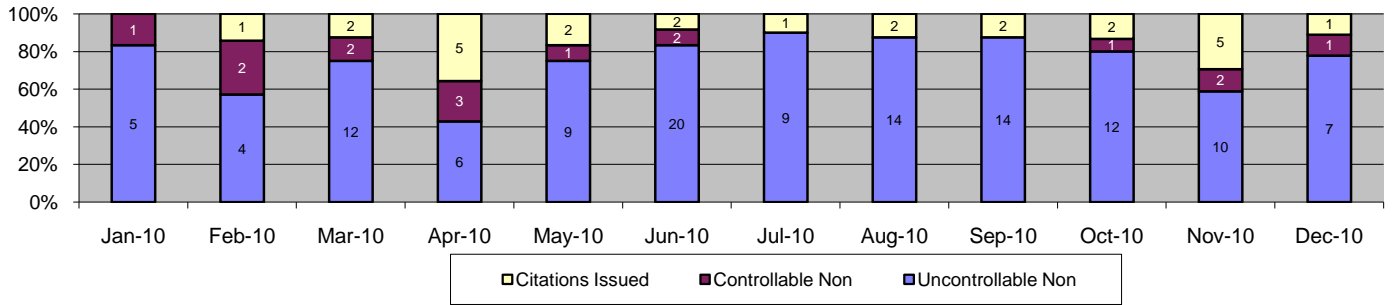


Events	Dec-10		3 Month Average		Year to Date Total		Year to Date Average		2009 Average	
	Quantity	% of Events	Quantity	% of Events	Quantity	% of Events	Quantity	% of Events	Quantity	% of Events
Non Violations	604	98%	294	98%	4,264	97%	355	97%	99	97%
Violations	10	2%	9	3%	110	3%	9	3%	3	3%
Total Events	614	100%	303	100%	4,374	100%	365	100%	102	100%
<i>Violations</i>										
	Quantity	% of Viol	Quantity	% of Viol	Quantity	% of Viol	Quantity	% of Viol	Quantity	% of Viol
Uncont. Non-Issued Viol	8	80%	6	64%	62	56%	5	56%	3	100%
Cont. Non-Issued Viol	0	0%	1	14%	20	18%	2	18%	0	0%
Citations	2	20%	2	21%	28	25%	2	25%	0	0%
Daily Av. Vehicle Counts	117		60		961		80		55	
Av. Violation Speed	19.9		20.3		19.2		19.2		0.0	
Av. Issued Speed	17.0		11.3		14.8		14.8		0.0	
Av. Violation Sec.	79.8		74.6		76.0		76.0		0.0	
Av. Issued Sec.	76.8		56.4		81.6		81.6		0.0	
Cal. Days/Enforc. Days	31	31	30	30	365	365	30	30	31	31
Daily Citation Yield	0.06	0.06	0.07	0.07	0.08	0.08	0.08	0.08	0.00	0.00
Cit/Viol. Iss. Rate	20%		25%		25%		25%		0%	
Controllable Iss. Rate	0%		0%		0%		0%		0%	
<i>Non - Violations</i>										
	Quantity	% Non-Viol	Quantity	% Non-Viol	Quantity	% Non-Viol	Quantity	% Non-Viol	Quantity	% Non-Viol
Rear Axle Violation	0	0%	0	0%	0	0%	0	0%	0	0%
Right Turn	0	0%	0	0%	0	0%	0	0%	0	0%
No Violation Occurred	604	100%	294	100%	4,264	100%	355	100%	99	100%
Total Non Violations	604	100%	294	100%	4,264	100%	355	100%	99	100%
<i>Uncontrollable Non-Iss</i>										
	Quantity	% of Un.Non	Quantity	% of Un.Non	Quantity	% of Un.Non	Quantity	% of Un.Non	Quantity	% of Un.Non
No Plate	0	0%	0	6%	4	6%	0	6%	0	0%
Out of State Plate	0	0%	0	0%	0	0%	0	0%	0	0%
Glare on Plate	0	0%	0	0%	0	0%	0	0%	0	0%
Illegible Plate	0	0%	0	0%	0	0%	0	0%	0	0%
Plate Obstructed	0	0%	0	0%	0	0%	0	0%	0	0%
Windshield Glare	0	0%	0	0%	2	3%	0	3%	0	0%
Driver Obstructed	1	13%	1	11%	6	10%	1	10%	0	0%
Car Obstructed	5	63%	4	61%	35	56%	3	56%	2	67%
Emergency Vehicle	2	25%	0	6%	9	15%	1	15%	1	33%
No DMV Match Found	0	0%	1	17%	4	6%	0	6%	0	0%
LASD Expired	0	0%	0	0%	2	3%	0	3%	0	0%
Other	0	0%	0	0%	0	0%	0	0%	0	0%
Total	8	100%	6	100%	62	100%	5	100%	3	100%
<i>Controllable Non-Iss</i>										
	Quantity	% Cont. Non	Quantity	% Cont. Non	Quantity	% Cont. Non	Quantity	% Cont. Non	Quantity	% Cont. Non
Framing of Plate	0	0%	0	0%	1	5%	0	5%	0	0%
Focus / Clarity of Plate	0	0%	0	0%	0	0%	0	0%	0	0%
Dark Interior	0	0%	0	0%	1	5%	0	5%	0	0%
Framing of Driver	0	0%	0	0%	1	5%	0	5%	0	0%
Focus / Clarity of Driver	0	0%	0	0%	0	0%	0	0%	0	0%
Framing of Car	0	0%	1	100%	15	75%	1	75%	0	0%
Data Error	0	0%	0	0%	1	5%	0	5%	0	0%
Exposure	0	0%	0	0%	0	0%	0	0%	0	0%
Equipment Malfunction	0	0%	0	0%	1	5%	0	5%	0	0%
LASD Return	0	0%	0	0%	0	0%	0	0%	0	0%
ACS Expired	0	0%	0	0%	0	0%	0	0%	0	0%
Total	0	100%	1	100%	20	100%	2	100%	0	100%



A Xerox Company

Los Angeles County MTA Gold Line Approach Summary Report Location 4119: WB to SB 1st @ Anderson

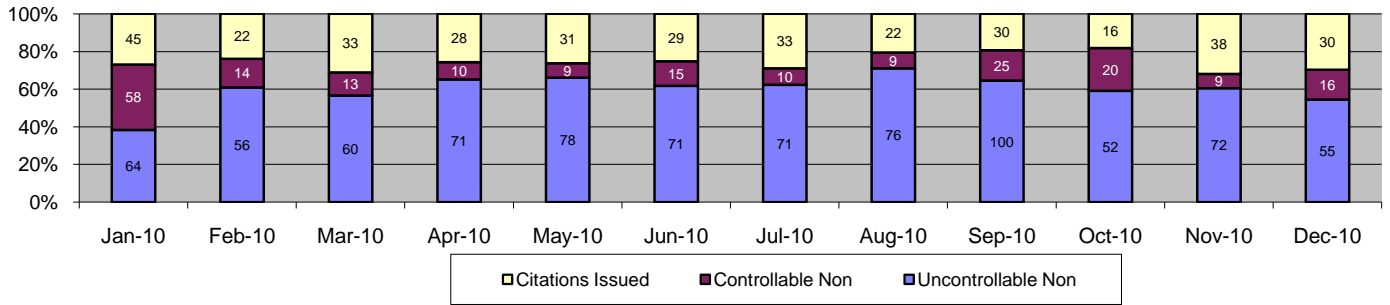


Events	Dec-10		3 Month Average		Year to Date Total		Year to Date Average		2009 Average	
	Quantity	% of Events	Quantity	% of Events	Quantity	% of Events	Quantity	% of Events	Quantity	% of Events
Non Violations	487	98%	442	97%	5,235	97%	436	97%	169	98%
Violations	9	2%	16	3%	162	3%	14	3%	3	2%
Total Events	496	100%	458	100%	5,397	100%	450	100%	172	100%
<i>Violations</i>										
	Quantity	% of Viol	Quantity	% of Viol	Quantity	% of Viol	Quantity	% of Viol	Quantity	% of Viol
Uncont. Non-Issued Viol	7	78%	12	75%	122	75%	10	75%	2	67%
Cont. Non-Issued Viol	1	11%	1	6%	15	9%	1	9%	1	33%
Citations	1	11%	3	19%	25	15%	2	15%	0	0%
Daily Av. Vehicle Counts	117		132		1,455		121		136	
Av. Violation Speed	17.1		17.4		18.2		18.2		12.0	
Av. Issued Speed	24.0		17.1		16.4		16.4		0.0	
Av. Violation Sec.	88.8		72.9		82.7		82.7		99.9	
Av. Issued Sec.	0.3		59.7		58.4		58.4		0.0	
Cal. Days/Enforc. Days	31	31	30	30	365	365	30	30	31	31
Daily Citation Yield	0.03	0.03	0.10	0.10	0.07	0.07	0.07	0.07	0.00	0.00
Cit/Viol. Iss. Rate	11%		15%		15%		15%		0%	
Controllable Iss. Rate	50%		63%		63%		63%		0%	
<i>Non - Violations</i>										
	Quantity	% Non-Viol	Quantity	% Non-Viol	Quantity	% Non-Viol	Quantity	% Non-Viol	Quantity	% Non-Viol
Rear Axle Violation	0	0%	0	0%	0	0%	0	0%	0	0%
Right Turn	0	0%	0	0%	0	0%	0	0%	0	0%
No Violation Occurred	487	100%	442	100%	5,235	100%	436	100%	169	100%
Total Non Violations	487	100%	442	100%	5,235	100%	436	100%	169	100%
<i>Uncontrollable Non-Iss</i>										
	Quantity	% of Un.Non	Quantity	% of Un.Non	Quantity	% of Un.Non	Quantity	% of Un.Non	Quantity	% of Un.Non
No Plate	2	29%	1	11%	14	11%	1	11%	0	0%
Out of State Plate	0	0%	1	6%	3	2%	0	2%	0	0%
Glare on Plate	0	0%	0	0%	0	0%	0	0%	0	0%
Illegible Plate	0	0%	0	3%	2	2%	0	2%	0	0%
Plate Obstructed	0	0%	0	0%	0	0%	0	0%	1	50%
Windshield Glare	0	0%	1	6%	9	7%	1	7%	0	0%
Driver Obstructed	0	0%	1	8%	9	7%	1	7%	0	0%
Car Obstructed	2	29%	7	56%	56	46%	5	46%	0	0%
Emergency Vehicle	1	14%	1	6%	8	7%	1	7%	0	0%
No DMV Match Found	2	29%	1	6%	7	6%	1	6%	1	50%
LASD Expired	0	0%	0	0%	4	3%	0	3%	0	0%
Other	0	0%	0	0%	10	8%	1	8%	0	0%
Total	7	100%	12	100%	122	100%	10	100%	2	100%
<i>Controllable Non-Iss</i>										
	Quantity	% Cont. Non	Quantity	% Cont. Non	Quantity	% Cont. Non	Quantity	% Cont. Non	Quantity	% Cont. Non
Framing of Plate	0	0%	1	67%	7	47%	1	47%	0	0%
Focus / Clarity of Plate	0	0%	0	0%	0	0%	0	0%	0	0%
Dark Interior	1	100%	0	33%	7	47%	1	47%	1	100%
Framing of Driver	0	0%	0	0%	1	7%	0	7%	0	0%
Focus / Clarity of Driver	0	0%	0	0%	0	0%	0	0%	0	0%
Framing of Car	0	0%	0	0%	0	0%	0	0%	0	0%
Data Error	0	0%	0	0%	0	0%	0	0%	0	0%
Exposure	0	0%	0	0%	0	0%	0	0%	0	0%
Equipment Malfunction	0	0%	0	0%	0	0%	0	0%	0	0%
LASD Return	0	0%	0	0%	0	0%	0	0%	0	0%
ACS Expired	0	0%	0	0%	0	0%	0	0%	0	0%
Total	1	100%	1	100%	15	100%	1	100%	1	100%



A Xerox Company

Los Angeles County MTA Gold Line Approach Summary Report Location 4127: EB to NB 1st @ Mission

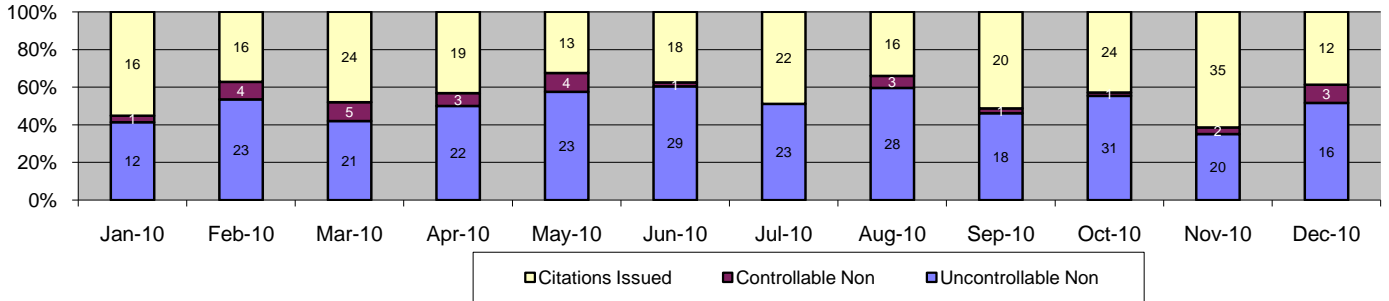


Events	Dec-10		3 Month Average		Year to Date Total		Year to Date Average		2009 Average	
	Quantity	% of Events	Quantity	% of Events	Quantity	% of Events	Quantity	% of Events	Quantity	% of Events
Non Violations	1,906	95%	1,712	94%	20,495	94%	1,708	94%	819	94%
Violations	101	5%	121	6%	1,391	6%	116	6%	50	6%
Total Events	2,007	100%	1,832	100%	21,886	100%	1,824	100%	869	100%
<i>Violations</i>										
	Quantity	% of Viol	Quantity	% of Viol	Quantity	% of Viol	Quantity	% of Viol	Quantity	% of Viol
Uncont. Non-Issued Viol	55	54%	75	62%	826	59%	69	59%	22	44%
Cont. Non-Issued Viol	16	16%	18	15%	208	15%	17	15%	5	10%
Citations	30	30%	28	23%	357	26%	30	26%	23	46%
Daily Av. Vehicle Counts	1,733		1,790		21,568		1,797		1,746	
Av. Violation Speed	20.2		21.3		20.9		20.9		21.6	
Av. Issued Speed	20.6		21.6		21.5		21.5		21.3	
Av. Violation Sec.	39.3		36.5		35.7		35.7		21.7	
Av. Issued Sec.	27.2		25.9		24.1		24.1		22.2	
Cal. Days/Enforc. Days	31	31	30	30	365	365	30	30	31	31
Daily Citation Yield	0.97	0.97	0.92	0.92	0.98	0.98	0.98	0.98	0.74	0.74
Cit/Viol. Iss. Rate	30%		26%		26%		26%		46%	
Controllable Iss. Rate	65%		63%		63%		63%		82%	
<i>Non - Violations</i>										
	Quantity	% Non-Viol	Quantity	% Non-Viol	Quantity	% Non-Viol	Quantity	% Non-Viol	Quantity	% Non-Viol
Rear Axle Violation	0	0%	0	0%	2	0%	0	0%	0	0%
Right Turn	0	0%	0	0%	0	0%	0	0%	0	0%
No Violation Occurred	1,906	100%	1,711	100%	20,493	100%	1,708	100%	819	100%
Total Non Violations	1,906	100%	1,712	100%	20,495	100%	1,708	100%	819	100%
<i>Uncontrollable Non-Iss</i>										
	Quantity	% of Un.Non	Quantity	% of Un.Non	Quantity	% of Un.Non	Quantity	% of Un.Non	Quantity	% of Un.Non
No Plate	11	20%	7	9%	96	12%	8	12%	0	0%
Out of State Plate	3	5%	2	2%	13	2%	1	2%	0	0%
Glare on Plate	0	0%	0	0%	2	0%	0	0%	0	0%
Illegible Plate	0	0%	0	0%	14	2%	1	2%	3	14%
Plate Obstructed	1	2%	1	1%	7	1%	1	1%	1	5%
Windshield Glare	4	7%	2	3%	28	3%	2	3%	0	0%
Driver Obstructed	0	0%	4	6%	43	5%	4	5%	0	0%
Car Obstructed	20	36%	39	52%	300	36%	25	36%	3	14%
Emergency Vehicle	11	20%	14	19%	233	28%	19	28%	15	68%
No DMV Match Found	5	9%	5	6%	50	6%	4	6%	0	0%
LASD Expired	0	0%	1	1%	40	5%	3	5%	0	0%
Other	0	0%	0	0%	0	0%	0	0%	0	0%
Total	55	100%	75	100%	826	100%	69	100%	22	100%
<i>Controllable Non-Iss</i>										
	Quantity	% Cont. Non	Quantity	% Cont. Non	Quantity	% Cont. Non	Quantity	% Cont. Non	Quantity	% Cont. Non
Framing of Plate	4	25%	2	9%	67	32%	6	32%	2	40%
Focus / Clarity of Plate	0	0%	0	2%	3	1%	0	1%	0	0%
Dark Interior	4	25%	1	6%	10	5%	1	5%	0	0%
Framing of Driver	3	19%	1	7%	18	9%	2	9%	0	0%
Focus / Clarity of Driver	0	0%	0	0%	1	0%	0	0%	0	0%
Framing of Car	0	0%	7	37%	71	34%	6	34%	2	40%
Data Error	0	0%	1	6%	5	2%	0	2%	0	0%
Exposure	0	0%	1	7%	10	5%	1	5%	0	0%
Equipment Malfunction	0	0%	4	24%	13	6%	1	6%	0	0%
LASD Return	5	31%	0	2%	10	5%	1	5%	1	20%
ACS Expired	0	0%	0	0%	0	0%	0	0%	0	0%
Total	16	100%	18	100%	208	100%	17	100%	5	100%



A Xerox Company

Los Angeles County MTA Gold Line Approach Summary Report Location 4129: WB to SB 1st @ Mission



Events	Dec-10		3 Month Average		Year to Date Total		Year to Date Average		2009 Average	
	Quantity	% of Events	Quantity	% of Events	Quantity	% of Events	Quantity	% of Events	Quantity	% of Events
Non Violations	689	96%	701	94%	9,048	94%	754	94%	371	94%
Violations	31	4%	51	5%	529	6%	44	6%	22	6%
Total Events	720	100%	752	100%	9,577	100%	798	100%	393	100%
Violations										
	Quantity	% of Viol	Quantity	% of Viol	Quantity	% of Viol	Quantity	% of Viol	Quantity	% of Viol
Uncont. Non-Issued Viol	16	52%	23	45%	266	50%	22	50%	7	32%
Cont. Non-Issued Viol	3	10%	1	3%	28	5%	2	5%	3	14%
Citations	12	39%	26	52%	235	44%	20	44%	12	55%
Daily Av. Vehicle Counts	354		355		4,547		379		301	
Av. Violation Speed	17.0		17.8		17.8		17.8		20.6	
Av. Issued Speed	18.5		18.7		18.8		18.8		21.5	
Av. Violation Sec.	70.5		54.4		61.3		61.3		59.3	
Av. Issued Sec.	55.1		49.2		57.3		57.3		56.3	
Cal. Days/Enforc. Days	31	31	30	30	365	365	30	30	31	31
Daily Citation Yield	0.39	0.39	0.87	0.87	0.64	0.64	0.64	0.64	0.39	0.39
Cit/Viol. Iss. Rate	39%		44%		44%		44%		55%	
Controllable Iss. Rate	80%		89%		89%		89%		80%	
Non - Violations										
	Quantity	% Non-Viol	Quantity	% Non-Viol	Quantity	% Non-Viol	Quantity	% Non-Viol	Quantity	% Non-Viol
Rear Axle Violation	0	0%	0	0%	3	0%	0	0%	0	0%
Right Turn	0	0%	0	0%	0	0%	0	0%	0	0%
No Violation Occurred	689	100%	701	100%	9,045	100%	754	100%	371	100%
Total Non Violations	689	100%	701	100%	9,048	100%	754	100%	371	100%
Uncontrollable Non-Iss										
	Quantity	% of Un.Non	Quantity	% of Un.Non	Quantity	% of Un.Non	Quantity	% of Un.Non	Quantity	% of Un.Non
No Plate	3	19%	5	23%	55	21%	5	21%	3	43%
Out of State Plate	0	0%	0	1%	3	1%	0	1%	0	0%
Glare on Plate	0	0%	0	1%	2	1%	0	1%	0	0%
Illegible Plate	0	0%	0	0%	0	0%	0	0%	0	0%
Plate Obstructed	0	0%	0	0%	0	0%	0	0%	0	0%
Windshield Glare	0	0%	0	1%	4	2%	0	2%	0	0%
Driver Obstructed	2	13%	2	9%	20	8%	2	8%	1	14%
Car Obstructed	6	38%	8	36%	82	31%	7	31%	1	14%
Emergency Vehicle	4	25%	2	9%	33	12%	3	12%	1	14%
No DMV Match Found	1	6%	4	16%	47	18%	4	18%	1	14%
LASD Expired	0	0%	1	3%	20	8%	2	8%	0	0%
Other	0	0%	0	0%	0	0%	0	0%	0	0%
Total	16	100%	23	100%	266	100%	22	100%	7	100%
Controllable Non-Iss										
	Quantity	% Cont. Non	Quantity	% Cont. Non	Quantity	% Cont. Non	Quantity	% Cont. Non	Quantity	% Cont. Non
Framing of Plate	0	0%	0	25%	13	46%	1	46%	0	0%
Focus / Clarity of Plate	0	0%	0	0%	0	0%	0	0%	0	0%
Dark Interior	2	67%	0	25%	4	14%	0	14%	0	0%
Framing of Driver	1	33%	0	25%	8	29%	1	29%	1	33%
Focus / Clarity of Driver	0	0%	0	0%	0	0%	0	0%	0	0%
Framing of Car	0	0%	0	0%	0	0%	0	0%	0	0%
Data Error	0	0%	0	0%	0	0%	0	0%	0	0%
Exposure	0	0%	0	0%	0	0%	0	0%	0	0%
Equipment Malfunction	0	0%	0	0%	0	0%	0	0%	0	0%
LASD Return	0	0%	0	0%	2	7%	0	7%	2	67%
ACS Expired	0	0%	0	25%	1	4%	0	4%	0	0%
Total	3	100%	1	100%	28	100%	2	100%	3	100%

Calls For Information

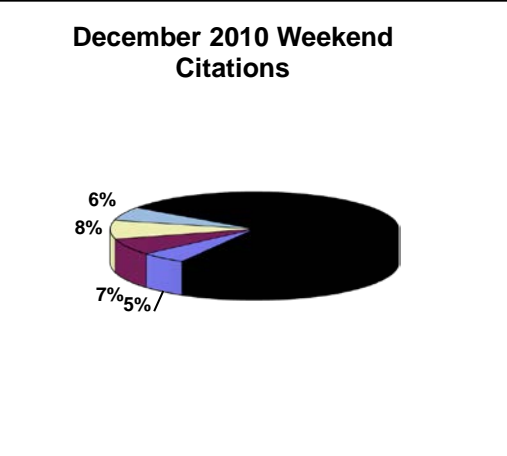
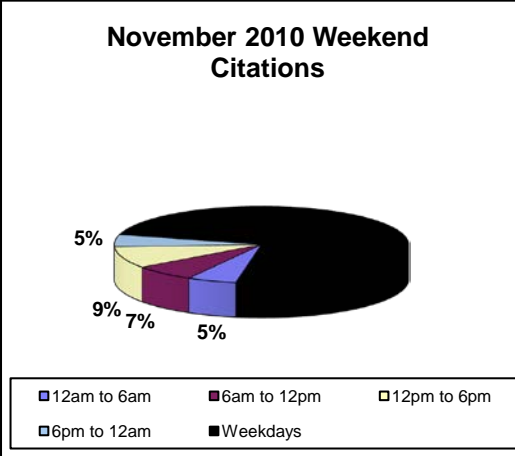
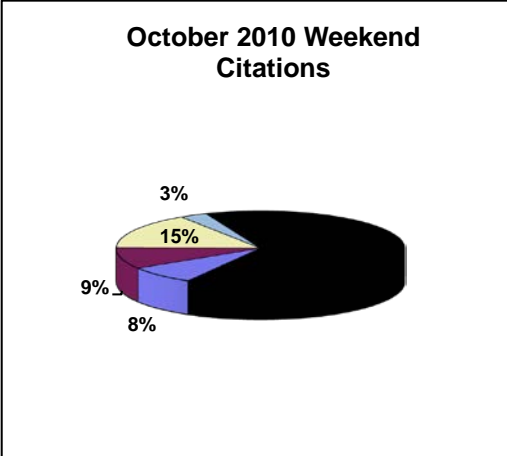
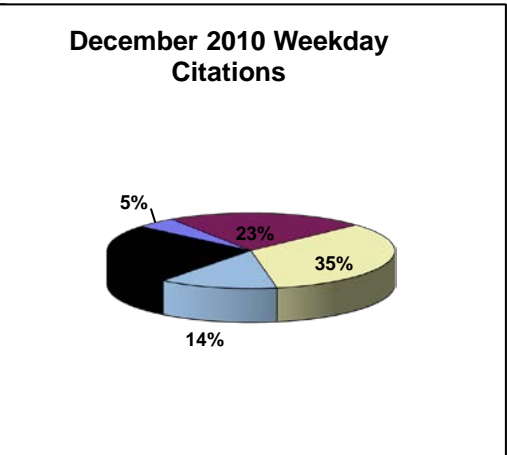
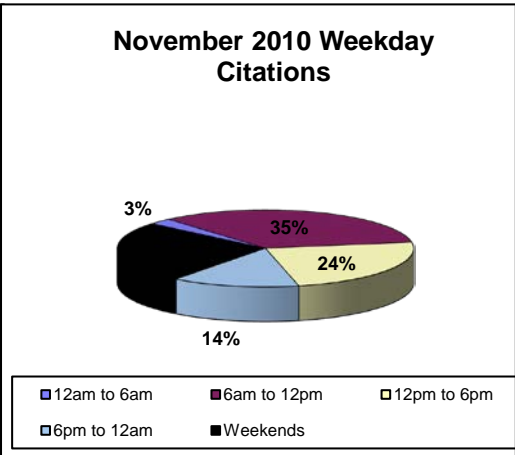
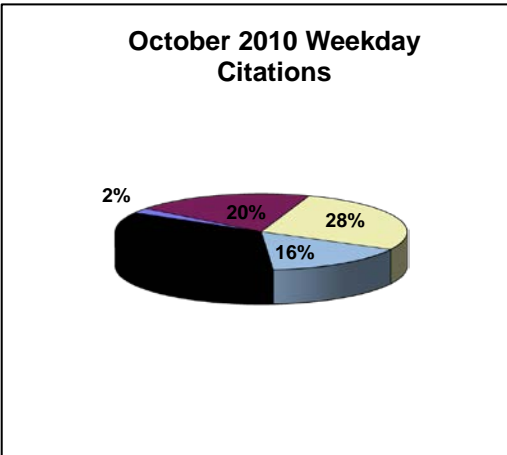
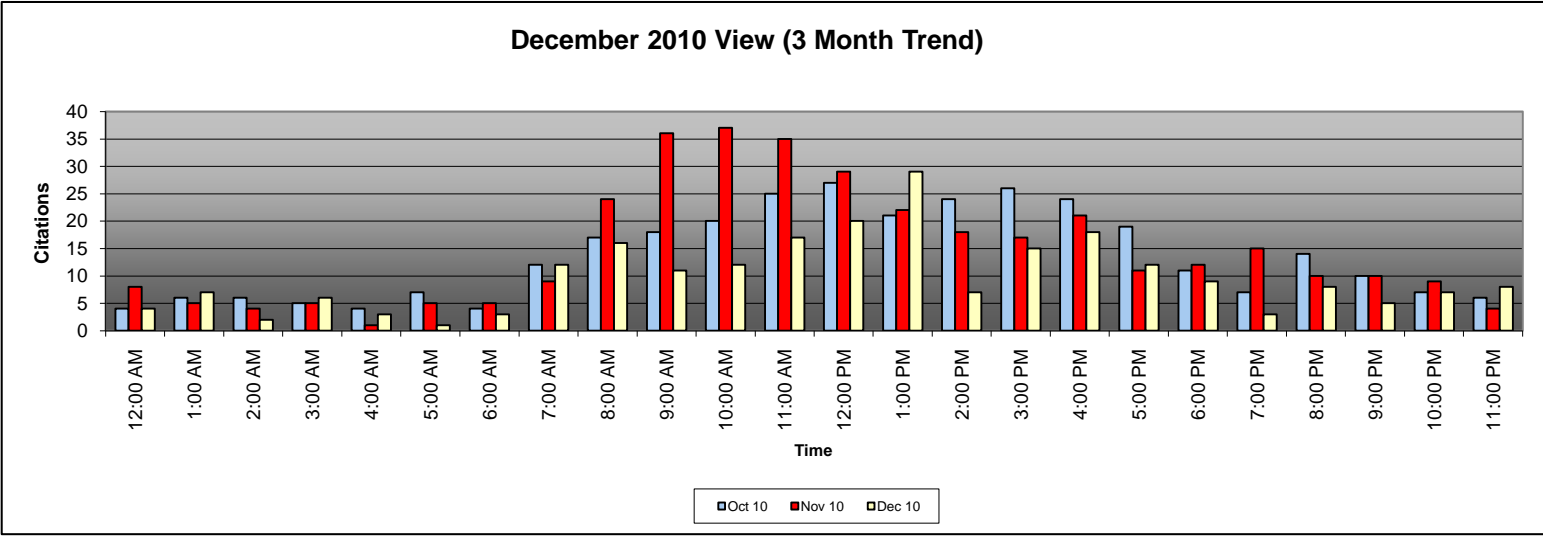
Reason for Call	Dec-10	3 Month Average	Year to Date Average	Year to Date Total	2009 Average*
<i>Appointment</i>	7	9	9	102	NA
<i>Bail</i>	12	11	8	101	NA
<i>Complaint</i>	0	0	1	7	NA
<i>Contest Violation</i>	17	14	10	114	NA
<i>Courtesy Notice</i>	0	0	0	2	NA
<i>Explain Citation</i>	3	2	2	25	NA
<i>Explain Court</i>	1	0	0	1	NA
<i>Explain the Project</i>	0	0	0	4	NA
<i>Extension</i>	4	4	3	34	NA
<i>Other</i>	0	0	0	0	NA
<i>Affidavit of Non-Liability</i>	10	11	11	126	NA
<i>Affidavit of Non-Liability Status</i>	0	1	1	11	NA
<i>Traffic School</i>	0	2	2	29	NA
Total Calls	54	54	46	556	NA
Appointments Scheduled	6	7	7	83	NA
Affidavits of Non-Liability Processed	40	57	50	553	NA
Court Packets Prepared	84	8	12	149	NA

DATE	4007	4009	4017	4019	4027	4029	4037	4039	4047	4049	4057	4059	4069	4077	4079	4087	4089	4097	4099	4109	4119	4127	4129	Total
12/01/2010			1				1				3		3									2	2	12
12/02/2010	2	2			1						2		1	1		1	1		1			1	1	14
12/03/2010	2	2					3			1			1		2							1		12
12/04/2010		1					2				2		2		1	1								9
12/05/2010									1				1		3							1	1	7
12/06/2010	2								1				2	1	1							1		8
12/07/2010		2									2		1						1					6
12/08/2010			1		1		1	1			1		1	2	1							1		10
12/09/2010	2	2	1	1					1	1	2		4		2							1		17
12/10/2010		1							1	1		1										1		5
12/11/2010		1	1			1	1		1		2				1							1		9
12/12/2010		2					1		3		1		2		3							3	2	17
12/13/2010	1	1	1								1		1		1					1				7
12/14/2010		1	1						3				2				1					2		10
12/15/2010		2	1						2		1	1	1	1				1				1		11
12/16/2010	1	1						1		2		2	1	1	1								2	11
12/17/2010		1			1		1		2		1		2	1		1	1				1			12
12/18/2010		1	1								1		4		1	1	1					1	1	12
12/19/2010													5									1		6
12/20/2010		5						1					16		1				1	1		1	2	28
12/21/2010		2				1		1	1				3											8
12/22/2010									1		1		8		3		1					2		16
12/23/2010		2	2		1				1		1				2	1	1							11
12/24/2010							1		4	1			3		2							2	2	15
12/25/2010		2					1	1				2	4											10
12/26/2010		2						1				1		2								1		7
12/27/2010	2		1					1			1											1		5
12/28/2010									1		1				2		1					1	1	7
12/29/2010		2	1				1				1		1											6
12/30/2010			1						1		1		3		1							1		8
12/31/2010									1		1		1						1			1		5
Totals	12	35	13	1	4	2	13	7	25	6	25	5	74	9	28	5	7	1	4	2	1	30	12	321

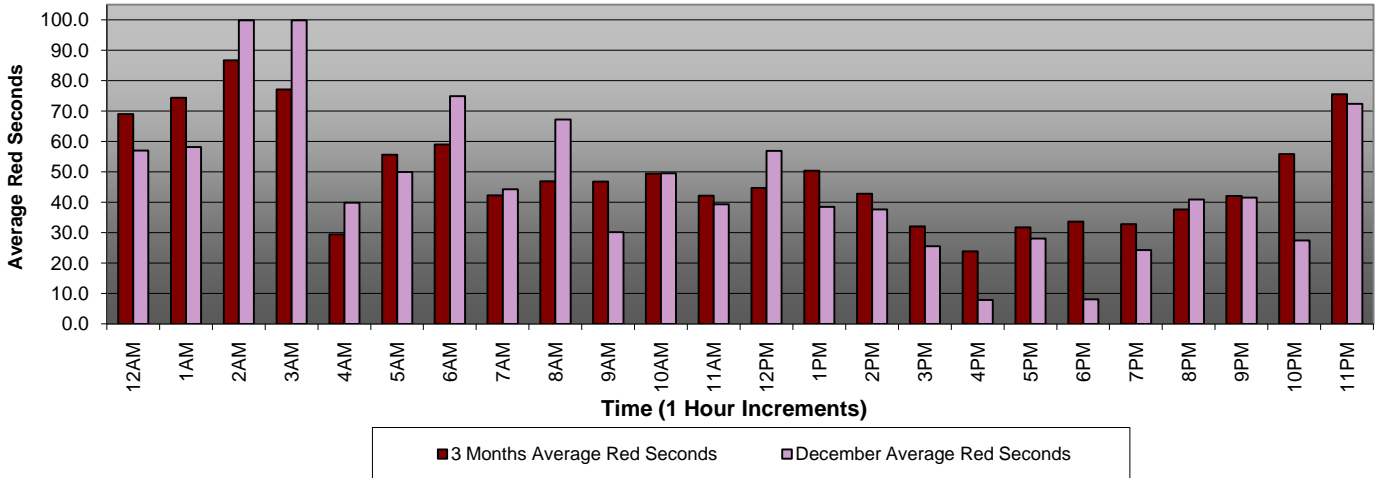
4007 = EB to NB 3rd @ Civic Center
 4009 = E1 WB to SB 3rd @ La Verne
 4017 = EB to NB 3rd @ Mednik
 4019 = WB to SB 3rd @ Mednik
 4027 = EB to NB 3rd @ Arizona
 4029 = WB to SB 3rd @ Arizona
 4037 = EB to NB 3rd @ McDonnell
 4039 = WB to SB 3rd @ McDonnell

4047 = EB to NB 3rd @ Ford
 4049 = WB to SB 3rd @ Ford
 4057 = EB to NB 3rd @ Eastern
 4059 = WB to SB 3rd @ Eastern
 4069 = WB to SB 3rd @ Downey
 4077 = EB to NB 3rd @ Gage
 4079 = WB to SB 3rd @ Gage
 4087 = EB to NB 1st @ Lorena

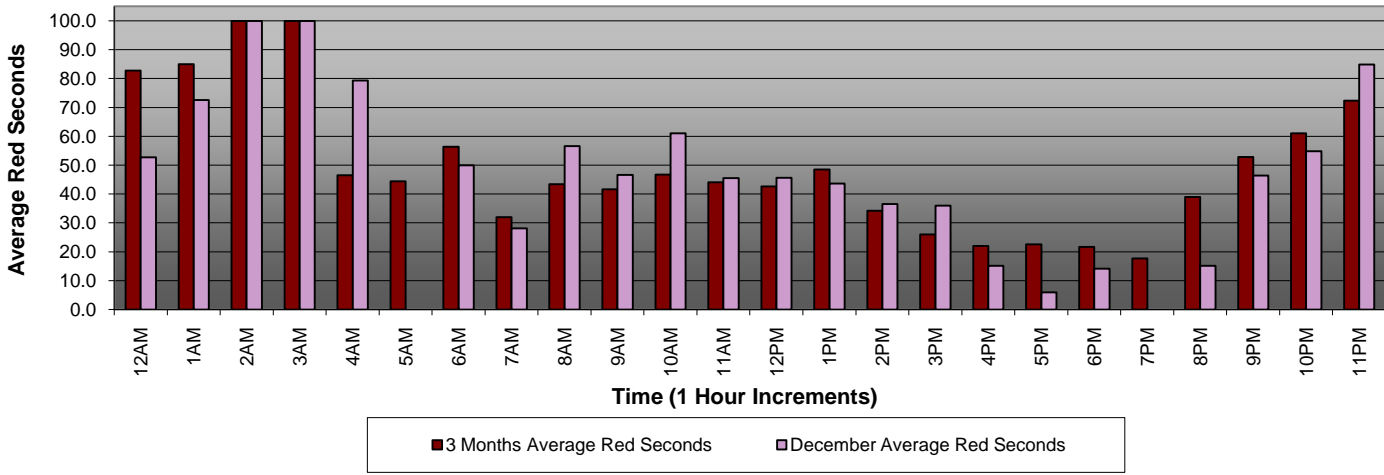
4089 = WB to SB 1st @ Lorena
 4097 = EB to NB 1st @ Clarence
 4099 = WB to SB 1st @ Clarence
 4109 = WB to SB 1st @ Utah
 4119 = WB to SB 1st @ Anderson
 4127 = EB to NB 1st @ Mission
 4129 = WB to SB 1st @ Mission



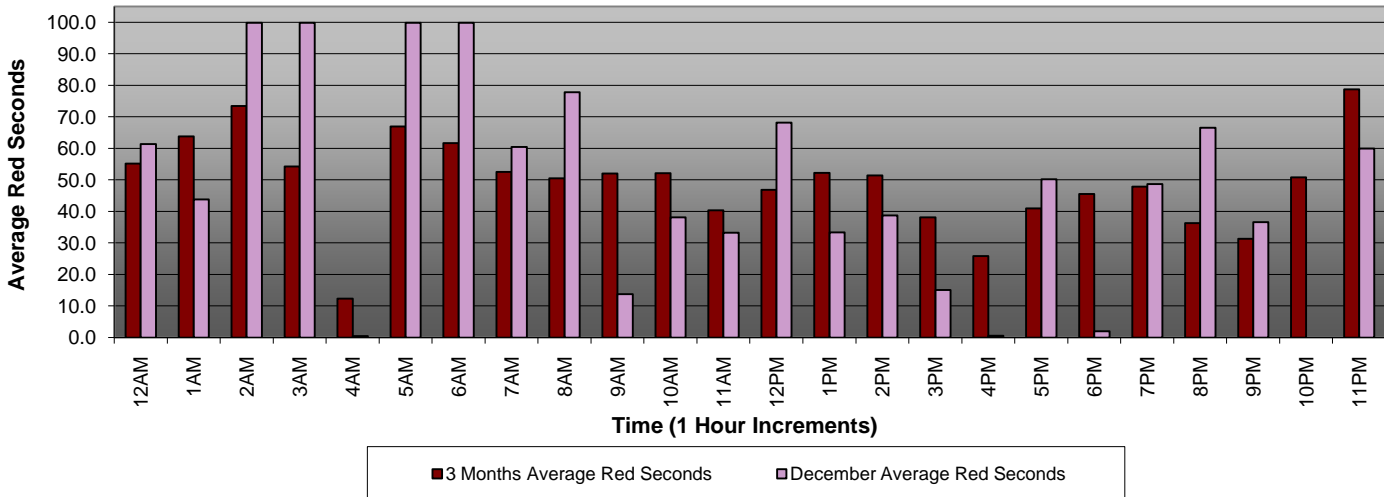
Average Red Seconds (Combined 6 Month Trend, July - December)



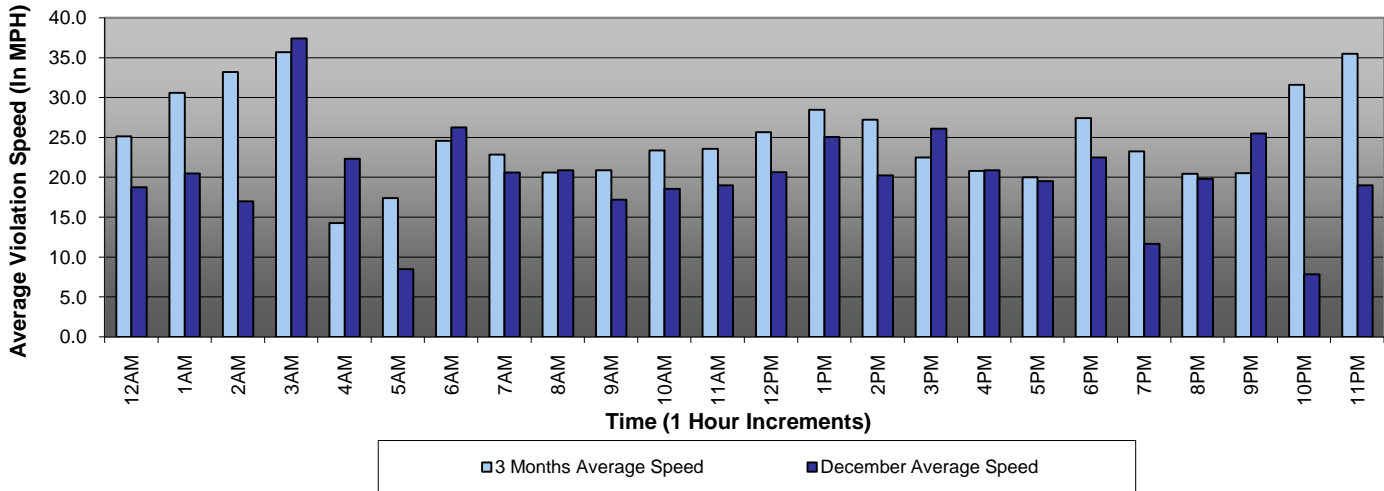
Average Red Seconds (Weekdays 6 Month Trend, July - December)



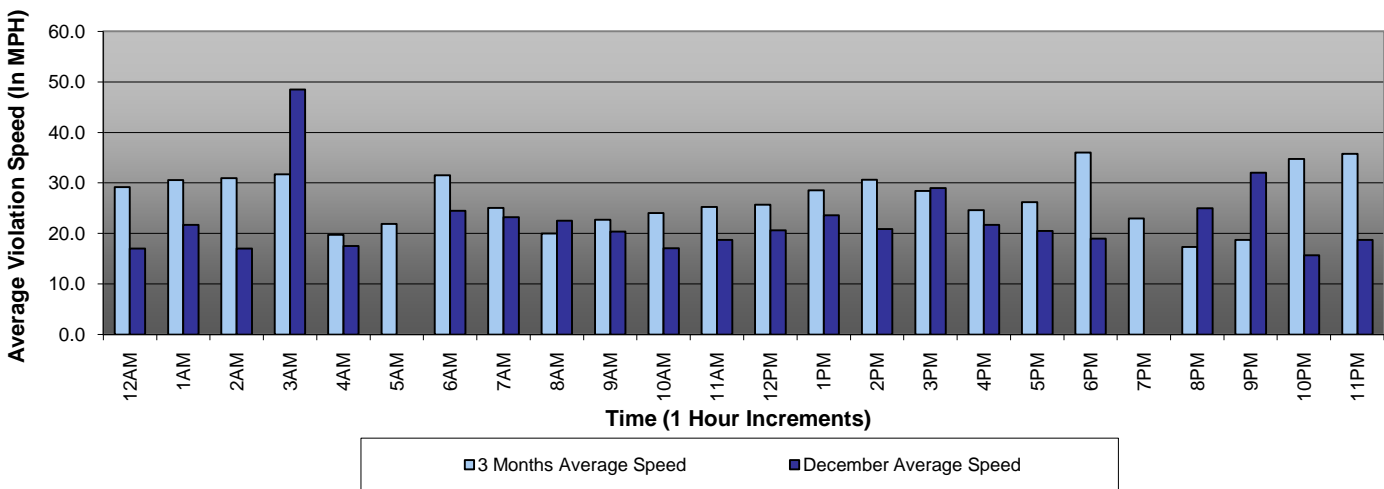
Average Red Seconds (Weekends 6 Month Trend, July - December)



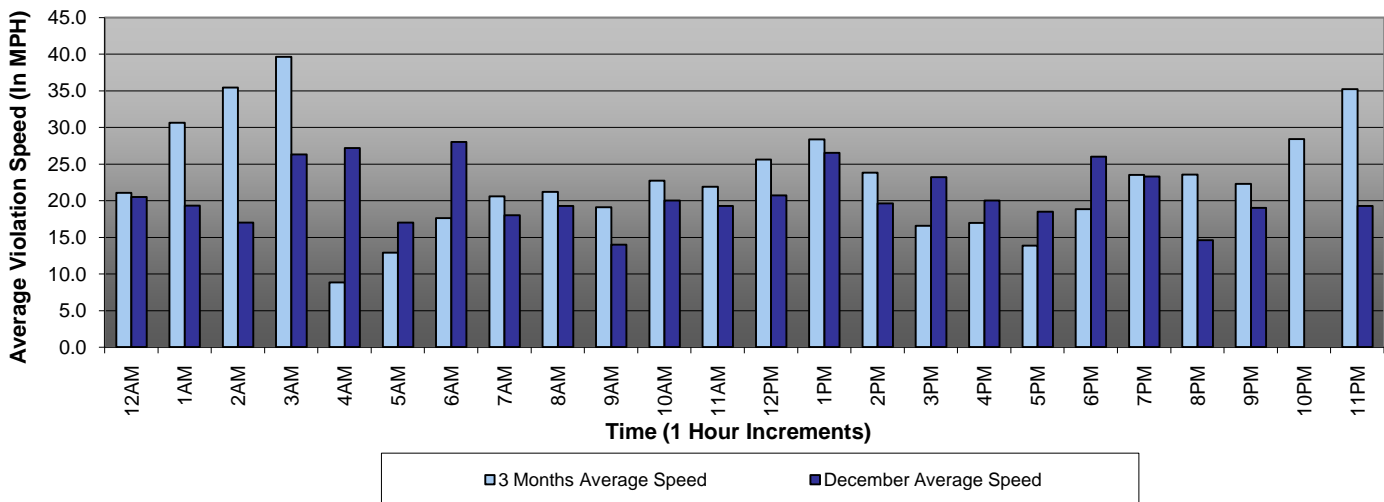
Average Violation Speed (Combined 6 Month Trend, July - December)



Average Violation Speed (Weekdays 6 Month Trend, July - December)



Average Violation Speed (Weekends 6 Month Trend, July - December)





A **xerox** Company

**Los Angeles County MTA Gold Line
Monthly Citation Yield - By Location
December 2010**

Direction	Location	Code	Days of Enforcement	Events	Violations	Citations	Yield*
EB to NB	3rd & Civic Center	4007	31	958	56	12	0.39
WB to SB	3rd & La Verne	4009	31	900	238	35	1.13
EB to NB	3rd & Mednik	4017	31	609	85	13	0.42
WB to SB	3rd & Mednik	4019	31	405	35	1	0.03
EB to NB	3rd & Arizona	4027	31	496	26	4	0.13
WB to SB	3rd & Arizona	4029	31	209	23	2	0.06
EB to NB	3rd and McDonnell	4037	31	566	50	13	0.42
WB to SB	3rd and McDonnell	4039	31	477	38	7	0.23
EB to NB	3rd & Ford	4047	31	507	62	25	0.81
WB to SB	3rd & Ford	4049	31	342	57	6	0.19
EB to NB	3rd & Eastern	4057	31	278	71	25	0.81
WB to SB	3rd & Eastern	4059	31	184	35	5	0.16
WB to SB	3rd & Downey	4069	31	1,308	154	74	2.39
EB to NB	3rd & Gage	4077	31	174	29	9	0.29
WB to SB	3rd & Gage	4079	31	432	77	28	0.90
EB to NB	1st & Lorena	4087	31	650	17	5	0.16
WB to SB	1st & Lorena	4089	31	271	11	7	0.23
EB to NB	1st & Clarence	4097	31	558	10	1	0.03
WB to SB	1st & Clarence	4099	31	982	29	4	0.13
WB to SB	1st & Utah	4109	31	614	10	2	0.06
WB to SB	1st & Anderson	4119	31	496	9	1	0.03
EB to NB	1st & Mission	4127	31	2,007	101	30	0.97
WB to SB	1st & Mission	4129	31	720	31	12	0.39
Totals			31	14,143	1,254	321	10.35

*Yield is the number of citations issued per day of enforcement.



A **xerox** Company

**Los Angeles County MTA Gold Line
Disposition Summary Report
December 2010**

	Dec-10		3 Month Average		YTD Total		YTD Average		2009 Average	
Disposition Type	Count /Amount Paid		Count /Amount Paid		Count /Amount Paid		Count /Amount Paid		Count /Amount Paid	
<i>Bail Forfeiture</i>	58	\$28,096.00	73	\$34,292.00	534	\$248,733.00	49	\$22,612.09	NA	NA
<i>Fine Paid</i>	11	\$3,299.00	11	\$3,405.00	73	\$26,423.00	7	\$2,402.09	NA	NA
<i>Department Void</i>	2	\$0.00	4	\$0.00	25	\$0.00	2	\$0.00	NA	NA
<i>Not Guilty</i>	94	\$0.00	79	\$0.00	485	\$0.00	44	\$0.00	NA	NA
<i>Section D Void</i>	85	\$0.00	75	\$0.00	524	\$0.00	48	\$0.00	NA	NA
<i>Traffic School</i>	73	\$32,427.00	60	\$27,364.00	437	\$203,938.00	40	\$18,539.82	NA	NA
Court Gross Total	323	\$63,822.00	302	\$65,061.00	2,078	\$479,094.00	189	\$43,554.00	NA	NA
MTA Gross Total*	142	\$20,696.04	144	\$20,873.04	1,044	\$151,687.02	95	\$13,789.73	NA	NA

*Logic built on following model (assuming the new 2009 fine and fee structure):

MTA receives \$146.31 of \$446.00 citation where bail forfeiture and fine paid occurs

MTA receives \$148.05 of \$509.00 citation when traffic school option is paid for



**Los Angeles County MTA Gold Line
Performance Report
December 2010**

	<u>Total Events</u>	<u>Non Violations</u>	<u>Potential Violations</u>	<u>Percent Citable</u>	<u>Non Issued Violations</u>	<u>No DMV Match</u>	<u>Police/ Client Rejected</u>	<u>Citations Issued</u>	<u>DMV Match Rate</u>	<u>Issuance Rate</u>	<u>Dispo Paid</u>	<u>Pay Rate</u>	<u>Closed No Pay</u>	<u>Pending</u>	<u>Closure Rate</u>	<u>Contest Rate</u>
Dec-09	5805	5387	418	7.20%	258	29	14	160	85.71%	38.28%	85	53%	24	51	68%	-
Jan-10	12371	11195	1176	9.51%	843	65	40	333	85.16%	28.32%	155	47%	121	57	83%	-
Feb-10	11564	10651	913	7.90%	604	58	19	309	84.97%	33.84%	132	43%	118	59	81%	-
Mar-10	13350	12264	1086	8.13%	739	79	26	347	82.52%	31.95%	142	41%	126	79	77%	-
Apr-10	14976	13798	1178	7.87%	809	68	46	369	85.92%	31.32%	141	38%	161	67	82%	4.7%
May-10	13007	11845	1162	8.93%	855	70	38	307	83.13%	26.42%	124	40%	121	62	80%	3.5%
Jun-10	13058	11782	1276	9.77%	895	66	72	381	87.28%	29.86%	140	37%	157	84	78%	2.6%
Jul-10	13229	11896	1333	10.08%	1000	62	78	333	86.89%	24.98%	105	32%	140	88	74%	16.8%
Aug-10	13811	12469	1342	9.72%	1053	83	70	289	81.22%	21.54%	82	28%	112	95	67%	0.0%
Sep-10	14099	12605	1494	10.60%	1090	69	40	404	86.55%	27.04%	118	29%	95	191	53%	1.3%
Oct-10	12325	11102	1223	9.92%	882	75	27	341	83.07%	27.88%	72	21%	65	204	40%	1.9%
Nov-10	12575	11261	1314	10.45%	922	72	49	392	85.96%	29.83%	49	13%	64	279	29%	10.3%
Dec-10	14143	12889	1254	8.87%	933	61	20	321	84.83%	25.60%	26	8%	63	232	28%	63.6%
Total	84,131	76,922	7209	8.57%	5003	435	255	2206	84.98%	30.60%	919	41.66%	828	459	79.19%	3.61%

* Pay Rate and Closure Rate percentages are based on a 3 month (90 day) lag

** Contested Citations take into account a 3 month (90 day) lag from the violation date to the trail date.