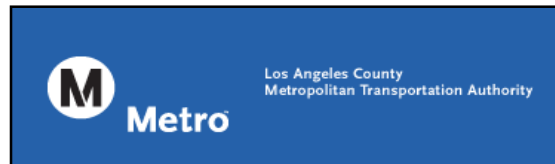




# Gold Line Monthly Report

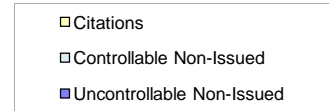
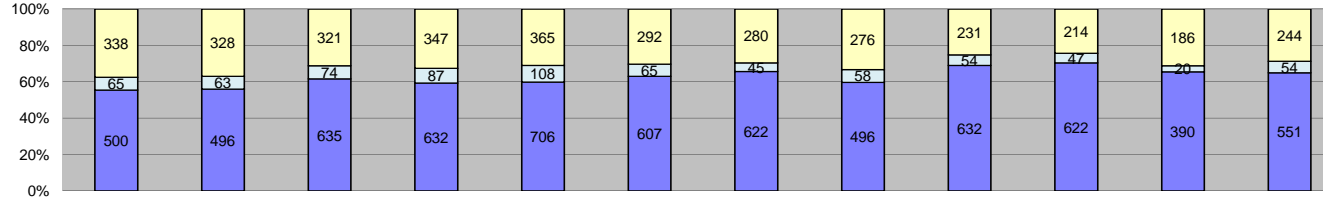


December 2011

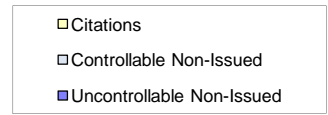
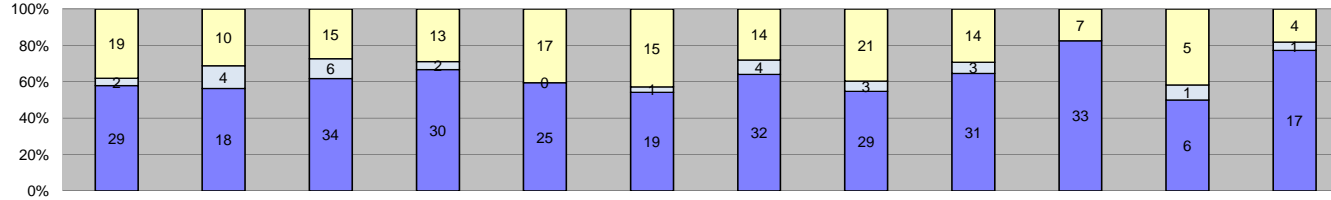


## Table of Contents

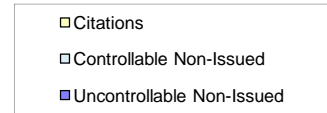
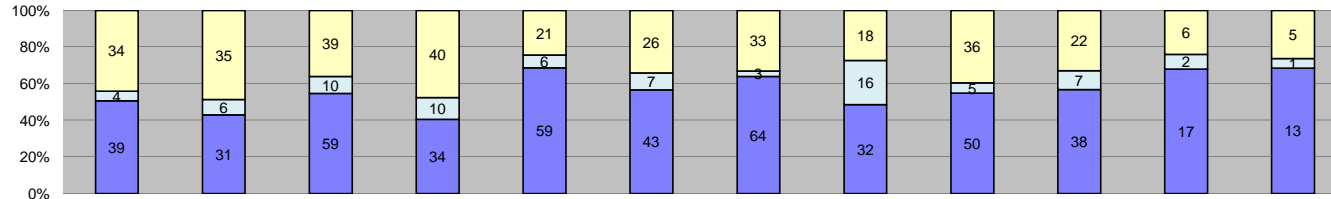
Report Title	Page
<i>Approach Summary Report, All Locations.....</i>	3
<i>Approach Summary Report, Location 4007: EB to NB 3rd @ Civic Center.....</i>	4
<i>Approach Summary Report, Location 4009: WB to SB 3rd @ La Verne.....</i>	5
<i>Approach Summary Report, Location 4017: EB to NB 3rd @ Mednik.....</i>	6
<i>Approach Summary Report, Location 4019: WB to SB 3rd @ Mednik.....</i>	7
<i>Approach Summary Report, Location 4027: EB to NB 3rd @ Arizona.....</i>	8
<i>Approach Summary Report, Location 4029: WB to SB 3rd @ Arizona.....</i>	9
<i>Approach Summary Report, Location 4037: EB to NB 3rd @ McDonnell.....</i>	10
<i>Approach Summary Report, Location 4039: WB to SB 3rd @ McDonnell.....</i>	11
<i>Approach Summary Report, Location 4047: EB to NB 3rd @ Ford.....</i>	12
<i>Approach Summary Report, Location 4049: WB to SB 3rd @ Ford.....</i>	13
<i>Approach Summary Report, Location 4057: EB to NB 3rd @ Eastern.....</i>	14
<i>Approach Summary Report, Location 4059: WB to SB 3rd @ Eastern.....</i>	15
<i>Approach Summary Report, Location 4069: WB to SB 3rd @ Downey.....</i>	16
<i>Approach Summary Report, Location 4077: EB to NB 3rd @ Gage.....</i>	17
<i>Approach Summary Report, Location 4079: WB to SB 3rd @ Gage.....</i>	18
<i>Approach Summary Report, Location 4083: EB to NB 1st @ Rowan.....</i>	19
<i>Approach Summary Report, Location 4085: WB to SB 1st @ Rowan.....</i>	20
<i>Approach Summary Report, Location 4087: EB to NB 1st @ Lorena.....</i>	21
<i>Approach Summary Report, Location 4089: WB to SB 1st @ Lorena.....</i>	22
<i>Approach Summary Report, Location 4097: EB to NB 1st @ Clarence.....</i>	23
<i>Approach Summary Report, Location 4099: WB to SB 1st @ Clarence.....</i>	24
<i>Approach Summary Report, Location 4109: WB to SB 1st @ Utah.....</i>	25
<i>Approach Summary Report, Location 4119: WB to SB 1st @ Anderson.....</i>	26
<i>Approach Summary Report, Location 4127: EB to NB 1st @ Mission.....</i>	27
<i>Approach Summary Report, Location 4129: WB to SB 1st @ Mission.....</i>	28
<i>Customer Service Report.....</i>	29
<i>Monthly Citation Yield Report.....</i>	30
<i>Disposition Summary Report.....</i>	31
<i>Performance Report.....</i>	32



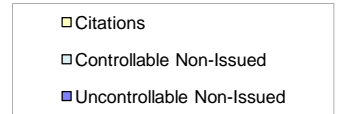
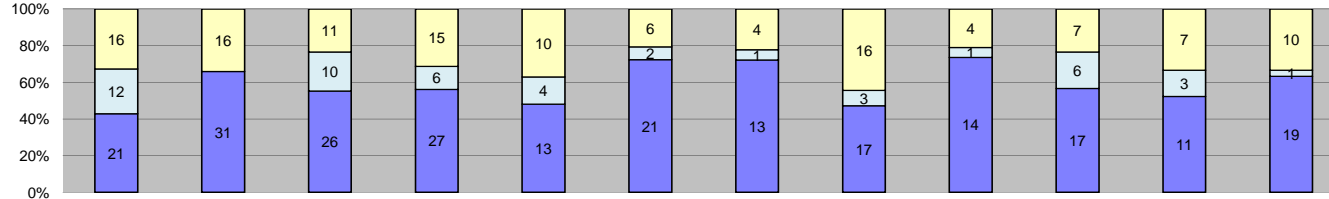
Events	Jan-11	Feb-11	Mar-11	Apr-11	May-11	Jun-11	Jul-11	Aug-11	Sep-11	Oct-11	Nov-11	Dec-11	Year to Date Monthly Average		2010 Monthly Average	
	Quantity	Quantity	Quantity	Quantity	Quantity	Quantity	Quantity	Quantity	Quantity	Quantity	Quantity	Quantity	Quantity	%	%	%
<b>Non-Violations</b>	11,805	11,969	12,975	12,307	12,487	11,982	10,599	8,185	8,386	9,500	8,859	11,973	10,919	92%	11,226	90%
Violations	903	887	1,030	1,066	1,179	964	947	830	917	883	596	849	921	8%	1,185	10%
<b>Total:</b>	<b>12,708</b>	<b>12,856</b>	<b>14,005</b>	<b>13,373</b>	<b>13,666</b>	<b>12,946</b>	<b>11,546</b>	<b>9,015</b>	<b>9,303</b>	<b>10,383</b>	<b>9,455</b>	<b>12,822</b>	<b>11,840</b>	<b>100%</b>	<b>12,411</b>	<b>100%</b>
<b>Violations</b>																
Uncontrollable Non-Issued	500	496	635	632	706	607	622	496	632	622	390	551	574	62%	723	61%
Controllable Non-Issued	65	63	74	87	108	65	45	58	54	47	20	54	62	7%	138	12%
Citations	338	328	321	347	365	292	280	276	231	214	186	244	285	31%	324	27%
<b>Total:</b>	<b>903</b>	<b>887</b>	<b>1,030</b>	<b>1,066</b>	<b>1,179</b>	<b>964</b>	<b>947</b>	<b>830</b>	<b>917</b>	<b>883</b>	<b>596</b>	<b>849</b>	<b>921</b>	<b>100%</b>	<b>1,185</b>	<b>100%</b>
<b>Non-Violations</b>																
Rear Axle Violation	2	6	3	0	4	8	2	1	2	3	3	5	3	0%	1	0%
Emergency Vehicle	402	381	369	343	349	369	311	283	283	264	141	227	310	3%	304	3%
Right Turn	0	0	0	0	0	0	0	0	0	0	0	0	0	0%	0	0%
No Violation Occurred	11,401	11,582	12,603	11,964	12,134	11,605	10,286	7,901	8,101	9,233	8,715	11,741	10,606	97%	11,224	97%
<b>Total:</b>	<b>11,805</b>	<b>11,969</b>	<b>12,975</b>	<b>12,307</b>	<b>12,487</b>	<b>11,982</b>	<b>10,599</b>	<b>8,185</b>	<b>8,386</b>	<b>9,500</b>	<b>8,859</b>	<b>11,973</b>	<b>10,919</b>	<b>100%</b>	<b>11,529</b>	<b>100%</b>
<b>Uncontrollable Non-Issued Violations</b>																
No Plate	85	84	95	74	69	91	97	66	84	77	41	63	77	13%	79	17%
Out of State Plate	4	8	11	7	13	6	12	9	10	14	3	6	9	1%	11	2%
Glare on Plate	11	16	15	14	15	8	16	8	8	9	2	2	10	2%	6	1%
Illegible Plate	12	22	18	12	7	9	13	10	4	6	6	13	11	2%	18	4%
Plate Obstructed	3	4	11	7	9	3	7	3	5	4	5	10	6	1%	4	1%
Windshield Glare	19	22	56	63	117	58	50	49	47	18	7	18	44	8%	33	7%
Driver Obstructed	62	51	90	71	75	40	58	53	61	57	27	33	57	10%	45	10%
Car Obstructed	150	197	189	199	183	200	161	137	180	200	144	148	174	30%	131	28%
No DMV Match Found	78	72	64	82	104	82	71	33	104	61	63	64	73	13%	65	14%
LASD Expired	1	0	0	0	0	6	0	0	4	0	0	7	2	0%	21	5%
LASD Return	16	16	21	102	112	104	135	127	125	120	92	141	93	148%	44	46%
Other	59	47	65	1	2	0	2	1	0	56	0	46	23	4%	6	1%
<b>Total:</b>	<b>500</b>	<b>539</b>	<b>635</b>	<b>632</b>	<b>706</b>	<b>607</b>	<b>622</b>	<b>496</b>	<b>632</b>	<b>622</b>	<b>390</b>	<b>551</b>	<b>578</b>	<b>100%</b>	<b>463</b>	<b>100%</b>
<b>Controllable Non-Issued Violations</b>																
Framing of Plate	11	21	13	21	18	14	12	8	16	13	9	27	15	24%	21	22%
Focus / Clarity of Plate	9	3	6	6	5	1	0	1	5	1	0	1	3	5%	6	6%
Dark Interior	27	18	22	19	19	12	7	14	8	11	2	7	14	22%	16	16%
Framing of Driver	11	20	19	30	25	18	19	17	14	15	6	14	17	28%	17	17%
Focus / Clarity of Driver	0	5	0	4	4	2	2	0	1	2	0	1	2	3%	2	2%
Framing of Car	7	5	12	6	3	4	3	4	5	2	2	2	5	7%	26	28%
Data/Operator Error	0	1	0	0	0	0	0	0	1	0	0	0	0	0%	1	1%
Exposure	0	1	2	1	1	7	2	3	0	2	0	0	2	3%	6	6%
Equipment Malfunction	0	0	0	0	32	7	0	10	4	0	0	2	5	7%	2	2%
ACS Expired	0	1	0	0	1	0	0	1	0	1	1	0	0	1%	0	0%
<b>Total:</b>	<b>65</b>	<b>75</b>	<b>74</b>	<b>87</b>	<b>108</b>	<b>65</b>	<b>45</b>	<b>58</b>	<b>54</b>	<b>47</b>	<b>20</b>	<b>54</b>	<b>63</b>	<b>100%</b>	<b>95</b>	<b>100%</b>
<b>Summary Metrics</b>													<b>Year to Date Monthly Average</b>		<b>2010 Monthly Average</b>	
Daily Average Vehicle Passes	15,280	16,676	17,500	15,952	17,721	17,720	15,745	17,495	17,101	17,441	15,790	16,472	16,741		14,750	
Average Issued Speed	18	19	18	19	19	19	20	20	20	20	20	20	19		17	
Average Issued Red Seconds	42.2	49.2	36.1	49.0	47.7	42.4	53.7	46.6	50.2	41.9	43.3	35.1	44.8		44.0	
Citation / Violation Issuance	37%	37%	31%	33%	31%	30%	30%	33%	25%	24%	31%	29%	31%		27%	
Controllable Issuance Rate	84%	84%	81%	80%	77%	82%	86%	83%	81%	82%	90%	82%	83%		70%	



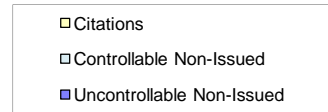
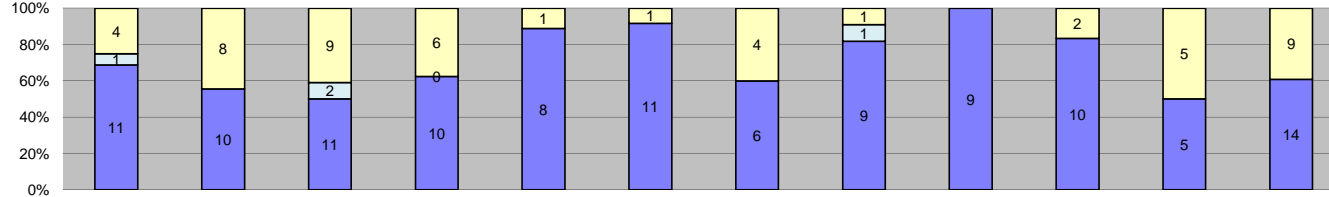
Events	Jan-11	Feb-11	Mar-11	Apr-11	May-11	Jun-11	Jul-11	Aug-11	Sep-11	Oct-11	Nov-11	Dec-11	Year to Date Monthly Average		2010 Monthly Average	
	Quantity	Quantity	Quantity	Quantity	Quantity	Quantity	Quantity	Quantity	Quantity	Quantity	Quantity	Quantity	Quantity	%	%	%
<b>Non-Violations</b>	778	758	822	749	654	673	780	822	832	887	848	903	792	95%	744	94%
<b>Violations</b>	50	32	55	45	42	35	50	53	48	40	12	22	40	5%	51	6%
<b>Total:</b>	<b>828</b>	<b>790</b>	<b>877</b>	<b>794</b>	<b>696</b>	<b>708</b>	<b>830</b>	<b>875</b>	<b>880</b>	<b>927</b>	<b>860</b>	<b>925</b>	<b>833</b>	<b>100%</b>	<b>795</b>	<b>100%</b>
<b>Violations</b>																
Uncontrollable Non-Issued	29	18	34	30	25	19	32	29	31	33	6	17	25	63%	33	64%
Controllable Non-Issued	2	4	6	2	0	1	4	3	3	0	1	1	2	6%	5	9%
Citations	19	10	15	13	17	15	14	21	14	7	5	4	13	32%	14	26%
<b>Total:</b>	<b>50</b>	<b>32</b>	<b>55</b>	<b>45</b>	<b>42</b>	<b>35</b>	<b>50</b>	<b>53</b>	<b>48</b>	<b>40</b>	<b>12</b>	<b>22</b>	<b>40</b>	<b>100%</b>	<b>51</b>	<b>100%</b>
<b>Non-Violations</b>																
Rear Axle Violation	0	0	0	0	0	0	0	0	0	0	0	0	0	0%	0	0%
Emergency Vehicle	7	14	8	8	5	3	5	3	5	3	1	2	5	1%	6	1%
Right Turn	0	0	0	0	0	0	0	0	0	0	0	0	0	0%	0	0%
No Violation Occurred	771	744	814	741	649	670	775	819	827	884	847	901	787	99%	744	99%
<b>Total:</b>	<b>778</b>	<b>758</b>	<b>822</b>	<b>749</b>	<b>654</b>	<b>673</b>	<b>780</b>	<b>822</b>	<b>832</b>	<b>887</b>	<b>848</b>	<b>903</b>	<b>792</b>	<b>100%</b>	<b>750</b>	<b>100%</b>
<b>Uncontrollable Non-Issued Violations</b>																
No Plate	3	5	2	2	2	5	1	4	5	1	0	0	3	10%	2	9%
Out of State Plate	0	0	1	0	1	0	0	1	0	3	0	1	1	2%	1	2%
Glare on Plate	0	2	1	0	2	2	1	0	2	0	0	0	1	3%	0	2%
Illegible Plate	2	1	3	1	0	1	4	3	0	2	0	1	2	6%	3	13%
Plate Obstructed	0	0	1	1	0	0	0	0	0	0	0	0	0	1%	0	0%
Windshield Glare	3	0	2	2	1	3	2	4	1	1	0	0	2	6%	2	8%
Driver Obstructed	5	1	9	5	9	2	8	5	3	2	0	1	4	17%	4	16%
Car Obstructed	11	7	8	10	7	4	10	8	16	21	5	7	10	38%	9	35%
No DMV Match Found	1	2	3	3	1	2	3	0	1	0	1	1	2	6%	2	9%
LASD Expired	0	0	0	0	0	0	0	0	0	0	0	0	0	0%	1	4%
LASD Return	2	0	0	6	2	0	3	4	3	3	0	4	2	100%	0	10%
Other	2	0	4	0	0	0	0	0	0	0	0	2	1	3%	1	2%
<b>Total:</b>	<b>29</b>	<b>18</b>	<b>34</b>	<b>30</b>	<b>25</b>	<b>19</b>	<b>32</b>	<b>29</b>	<b>31</b>	<b>33</b>	<b>6</b>	<b>17</b>	<b>25</b>	<b>100%</b>	<b>27</b>	<b>100%</b>
<b>Controllable Non-Issued Violations</b>																
Framing of Plate	1	2	1	2	0	0	0	0	1	0	0	1	1	30%	2	38%
Focus / Clarity of Plate	1	1	0	0	0	0	0	0	1	0	0	0	0	11%	1	19%
Dark Interior	0	1	3	0	0	1	1	1	1	0	0	0	1	30%	1	12%
Framing of Driver	0	0	1	0	0	0	2	0	0	0	1	0	0	15%	1	12%
Focus / Clarity of Driver	0	0	0	0	0	0	0	0	0	0	0	0	0	0%	0	0%
Framing of Car	0	0	1	0	0	0	1	0	0	0	0	0	0	7%	1	15%
Data/Operator Error	0	0	0	0	0	0	0	0	0	0	0	0	0	0%	0	0%
Exposure	0	0	0	0	0	0	0	2	0	0	0	0	0	7%	0	0%
Equipment Malfunction	0	0	0	0	0	0	0	0	0	0	0	0	0	0%	0	4%
ACS Expired	0	0	0	0	0	0	0	0	0	0	0	0	0	0%	0	0%
<b>Total:</b>	<b>2</b>	<b>4</b>	<b>6</b>	<b>2</b>	<b>0</b>	<b>1</b>	<b>4</b>	<b>3</b>	<b>3</b>	<b>0</b>	<b>1</b>	<b>1</b>	<b>2</b>	<b>100%</b>	<b>4</b>	<b>100%</b>
<b>Summary Metrics</b>													<b>Year to Date Monthly Average</b>		<b>2010 Monthly Average</b>	
Daily Average Vehicle Passes	250	274	293	238	229	259	249	301	302	251	259	218	260		277	
Average Issued Speed	17	16	16	18	16	18	18	19	19	17	20	17	18		18	
Average Issued Red Seconds	52.9	76.0	48.6	77.3	69.8	68.3	73.6	76.3	55.5	41.6	32.6	43.5	60		57.3	
Citation / Violation Issuance	38%	31%	27%	29%	40%	43%	28%	40%	29%	18%	42%	18%	32%		26%	
Controllable Issuance Rate	90%	71%	71%	87%	100%	94%	78%	88%	82%	100%	83%	80%	85%		56%	



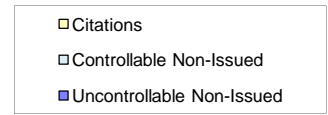
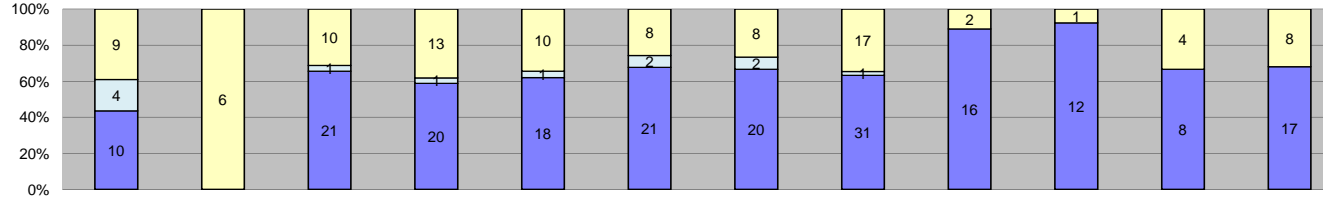
Events	Jan-11	Feb-11	Mar-11	Apr-11	May-11	Jun-11	Jul-11	Aug-11	Sep-11	Oct-11	Nov-11	Dec-11	Year to Date Monthly Average		2010 Monthly Average	
	Quantity	Quantity	Quantity	Quantity	Quantity	Quantity	Quantity	Quantity	Quantity	Quantity	Quantity	Quantity	Quantity	%	%	%
Non-Violations	451	459	506	485	387	383	404	240	294	298	224	307	370	84%	425	69%
Violations	77	72	108	84	86	76	100	66	91	67	25	19	73	16%	191	31%
<b>Total:</b>	<b>528</b>	<b>531</b>	<b>614</b>	<b>569</b>	<b>473</b>	<b>459</b>	<b>504</b>	<b>306</b>	<b>385</b>	<b>365</b>	<b>249</b>	<b>326</b>	<b>442</b>	<b>100%</b>	<b>616</b>	<b>100%</b>
<b>Violations</b>																
Uncontrollable Non-Issued	39	31	59	34	59	43	64	32	50	38	17	13	40	55%	139	73%
Controllable Non-Issued	4	6	10	10	6	7	3	16	5	7	2	1	6	9%	17	9%
Citations	34	35	39	40	21	26	33	18	36	22	6	5	26	36%	36	19%
<b>Total:</b>	<b>77</b>	<b>72</b>	<b>108</b>	<b>84</b>	<b>86</b>	<b>76</b>	<b>100</b>	<b>66</b>	<b>91</b>	<b>67</b>	<b>25</b>	<b>19</b>	<b>73</b>	<b>100%</b>	<b>191</b>	<b>100%</b>
<b>Non-Violations</b>																
Rear Axle Violation	0	0	0	0	0	4	0	0	0	0	0	0	0	0%	0	0%
Emergency Vehicle	143	125	120	130	95	107	105	60	94	73	52	88	99	27%	102	19%
Right Turn	0	0	0	0	0	0	0	0	0	0	0	0	0	0%	0	0%
No Violation Occurred	308	334	386	355	292	272	299	180	200	225	172	219	270	73%	425	81%
<b>Total:</b>	<b>451</b>	<b>459</b>	<b>506</b>	<b>485</b>	<b>387</b>	<b>383</b>	<b>404</b>	<b>240</b>	<b>294</b>	<b>298</b>	<b>224</b>	<b>307</b>	<b>370</b>	<b>100%</b>	<b>527</b>	<b>100%</b>
<b>Uncontrollable Non-Issued Violations</b>																
No Plate	14	7	16	11	12	13	23	10	12	7	3	4	11	28%	13	29%
Out of State Plate	1	1	0	0	3	1	1	3	1	1	0	0	1	3%	1	2%
Glare on Plate	1	1	2	1	1	0	0	1	0	1	0	0	1	2%	0	0%
Illegible Plate	2	3	6	1	0	0	1	0	1	2	0	1	1	4%	2	5%
Plate Obstructed	0	0	0	1	1	1	1	0	0	0	0	0	0	1%	0	1%
Windshield Glare	1	2	8	5	3	4	9	4	1	0	1	0	3	8%	2	5%
Driver Obstructed	5	3	9	6	7	8	4	2	14	4	1	2	5	14%	4	10%
Car Obstructed	5	3	4	1	9	4	3	2	5	4	4	1	4	9%	5	13%
No DMV Match Found	7	8	4	4	14	6	7	3	7	7	6	1	6	15%	6	15%
LASD Expired	0	0	0	0	0	0	0	0	1	0	0	0	0	0%	2	5%
LASD Return	1	0	4	4	9	6	15	7	8	12	2	3	6	92%	6	53%
Other	2	3	6	0	0	0	0	0	0	0	0	1	1	3%	0	0%
<b>Total:</b>	<b>39</b>	<b>31</b>	<b>59</b>	<b>34</b>	<b>59</b>	<b>43</b>	<b>64</b>	<b>32</b>	<b>50</b>	<b>38</b>	<b>17</b>	<b>13</b>	<b>40</b>	<b>100%</b>	<b>43</b>	<b>100%</b>
<b>Controllable Non-Issued Violations</b>																
Framing of Plate	0	1	4	0	0	0	1	1	1	0	1	0	1	12%	2	18%
Focus / Clarity of Plate	1	0	0	0	0	0	0	0	0	1	0	0	0	3%	1	5%
Dark Interior	1	0	0	1	1	2	0	2	1	1	0	0	1	12%	1	9%
Framing of Driver	2	5	5	8	4	4	1	2	1	4	1	1	3	49%	5	50%
Focus / Clarity of Driver	0	0	0	0	1	0	0	0	0	0	0	0	0	1%	0	2%
Framing of Car	0	0	1	1	0	1	1	1	1	1	0	0	1	9%	2	17%
Data/Operator Error	0	0	0	0	0	0	0	0	1	0	0	0	0	1%	0	0%
Exposure	0	0	0	0	0	0	0	0	0	0	0	0	0	0%	0	0%
Equipment Malfunction	0	0	0	0	0	0	0	10	0	0	0	0	1	13%	0	0%
ACS Expired	0	0	0	0	0	0	0	0	0	0	0	0	0	0%	0	0%
<b>Total:</b>	<b>4</b>	<b>6</b>	<b>10</b>	<b>10</b>	<b>6</b>	<b>7</b>	<b>3</b>	<b>16</b>	<b>5</b>	<b>7</b>	<b>2</b>	<b>1</b>	<b>6</b>	<b>100%</b>	<b>11</b>	<b>100%</b>
<b>Summary Metrics</b>																
Daily Average Vehicle Passes	822	833	814	696	784	796	696	746	790	766	849	676	Year to Date Monthly Average		2010 Monthly Average	
Average Issued Speed	17	17	17	17	17	17	17	18	18	18	18	17	772		804	
Average Issued Red Seconds	59.9	57.5	57.2	53.0	43.2	56.8	56.0	55.2	59.2	43.5	20.3	28.1	49		44.3	
Citation / Violation Issuance	44%	49%	36%	48%	24%	34%	33%	27%	40%	33%	24%	26%	35%		19%	
Controllable Issuance Rate	89%	85%	80%	80%	78%	79%	92%	53%	88%	76%	75%	83%	80%		24%	



Events	Jan-11	Feb-11	Mar-11	Apr-11	May-11	Jun-11	Jul-11	Aug-11	Sep-11	Oct-11	Nov-11	Dec-11	Year to Date Monthly Average		2010 Monthly Average	
													Quantity	%	Quantity	%
Non-Violations	543	508	547	589	625	588	447	273	295	281	231	357	440	93%	606	89%
Violations	49	47	47	48	27	29	18	36	19	30	21	30	33	7%	74	11%
<b>Total:</b>	<b>592</b>	<b>555</b>	<b>594</b>	<b>637</b>	<b>652</b>	<b>617</b>	<b>465</b>	<b>309</b>	<b>314</b>	<b>311</b>	<b>252</b>	<b>387</b>	<b>474</b>	<b>100%</b>	<b>680</b>	<b>100%</b>
<b>Violations</b>																
Uncontrollable Non-Issued	21	31	26	27	13	21	13	17	14	17	11	19	19	57%	48	65%
Controllable Non-Issued	12	0	10	6	4	2	1	3	1	6	3	1	4	12%	9	13%
Citations	16	16	11	15	10	6	4	16	4	7	7	10	10	30%	17	22%
<b>Total:</b>	<b>49</b>	<b>47</b>	<b>47</b>	<b>48</b>	<b>27</b>	<b>29</b>	<b>18</b>	<b>36</b>	<b>19</b>	<b>30</b>	<b>21</b>	<b>30</b>	<b>33</b>	<b>100%</b>	<b>74</b>	<b>100%</b>
<b>Non-Violations</b>																
Rear Axle Violation	0	0	0	0	0	0	0	0	0	0	0	0	0	0%	0	0%
Emergency Vehicle	29	28	22	16	42	30	13	20	27	31	11	7	23	5%	19	3%
Right Turn	0	0	0	0	0	0	0	0	0	0	0	0	0	0%	0	0%
No Violation Occurred	514	480	525	573	583	558	434	253	268	250	220	350	417	95%	606	97%
<b>Total:</b>	<b>543</b>	<b>508</b>	<b>547</b>	<b>589</b>	<b>625</b>	<b>588</b>	<b>447</b>	<b>273</b>	<b>295</b>	<b>281</b>	<b>231</b>	<b>357</b>	<b>440</b>	<b>100%</b>	<b>625</b>	<b>100%</b>
<b>Uncontrollable Non-Issued Violations</b>																
No Plate	4	4	4	3	1	2	1	4	1	3	1	3	3	13%	6	20%
Out of State Plate	0	0	0	0	0	1	0	1	0	0	0	0	0	1%	1	2%
Glare on Plate	0	5	1	2	0	0	0	1	1	2	0	0	1	5%	1	2%
Illegible Plate	0	2	2	1	0	0	1	0	0	0	0	1	1	3%	1	3%
Plate Obstructed	0	0	0	0	0	0	1	0	0	0	0	1	0	1%	0	1%
Windshield Glare	0	3	4	2	1	4	1	5	3	0	0	3	2	11%	5	16%
Driver Obstructed	4	4	4	3	1	1	3	1	1	1	0	2	2	11%	4	14%
Car Obstructed	8	10	8	9	9	10	4	2	4	5	4	6	7	34%	9	31%
No DMV Match Found	4	2	1	4	1	1	2	1	3	2	0	3	2	10%	2	8%
LASD Expired	0	0	0	0	0	1	0	0	0	0	0	0	0	0%	1	2%
LASD Return	0	1	1	3	0	1	0	3	1	4	6	0	2	37%	0	5%
Other	1	0	1	0	0	0	0	0	0	0	0	0	0	1%	0	1%
<b>Total:</b>	<b>21</b>	<b>31</b>	<b>26</b>	<b>27</b>	<b>13</b>	<b>21</b>	<b>13</b>	<b>17</b>	<b>14</b>	<b>17</b>	<b>11</b>	<b>19</b>	<b>19</b>	<b>100%</b>	<b>30</b>	<b>100%</b>
<b>Controllable Non-Issued Violations</b>																
Framing of Plate	1	0	1	1	0	0	0	0	0	1	0	0	0	7%	1	14%
Focus / Clarity of Plate	1	0	2	1	2	0	0	0	0	0	0	0	1	11%	0	4%
Dark Interior	9	4	3	2	1	0	1	3	1	3	1	0	2	52%	5	58%
Framing of Driver	0	0	1	0	0	0	0	0	0	0	0	1	0	4%	0	2%
Focus / Clarity of Driver	0	1	0	1	0	1	0	0	0	1	0	0	0	7%	0	3%
Framing of Car	1	0	3	1	1	0	0	0	0	1	2	0	1	17%	2	19%
Data/Operator Error	0	0	0	0	0	0	0	0	0	0	0	0	0	0%	0	0%
Exposure	0	0	0	0	0	1	0	0	0	0	0	0	0	2%	0	0%
Equipment Malfunction	0	0	0	0	0	0	0	0	0	0	0	0	0	0%	0	1%
ACS Expired	0	0	0	0	0	0	0	0	0	0	0	0	0	0%	0	0%
<b>Total:</b>	<b>12</b>	<b>0</b>	<b>10</b>	<b>6</b>	<b>4</b>	<b>2</b>	<b>1</b>	<b>3</b>	<b>1</b>	<b>6</b>	<b>3</b>	<b>1</b>	<b>5</b>	<b>100%</b>	<b>9</b>	<b>100%</b>
<b>Summary Metrics</b>																
Daily Average Vehicle Passes	805	816	829	992	842	851	775	831	837	792	832	663	Year to Date Monthly Average		2010 Monthly Average	
Average Issued Speed	24	23	25	21	24	25	24	23	22	21	24	23	822		840	
Average Issued Red Seconds	9.1	6.9	7.0	1.1	10.7	4.6	58.7	12.6	75.3	16.1	4.6	12.1	18		18.5	
Citation / Violation Issuance	33%	34%	23%	31%	37%	21%	22%	44%	21%	23%	33%	33%	30%		22%	
Controllable Issuance Rate	57%	100%	52%	71%	71%	75%	80%	84%	80%	54%	70%	91%	74%		37%	

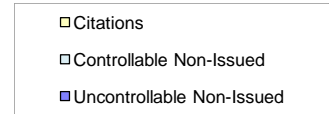
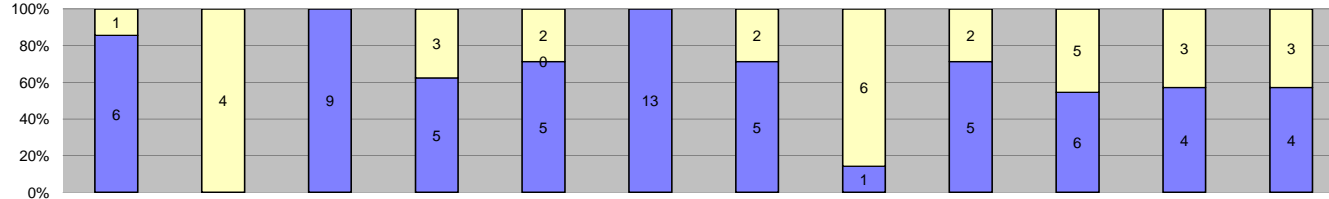


Events	Jan-11	Feb-11	Mar-11	Apr-11	May-11	Jun-11	Jul-11	Aug-11	Sep-11	Oct-11	Nov-11	Dec-11	Year to Date Monthly Average		2010 Monthly Average	
													Quantity	%	Quantity	%
Non-Violations	363	361	333	278	273	290	274	282	246	251	226	290	289	95%	340	87%
Violations	16	18	22	16	9	12	10	11	9	12	10	23	14	5%	50	13%
<b>Total:</b>	<b>379</b>	<b>379</b>	<b>355</b>	<b>294</b>	<b>282</b>	<b>302</b>	<b>284</b>	<b>293</b>	<b>255</b>	<b>263</b>	<b>236</b>	<b>313</b>	<b>303</b>	<b>100%</b>	<b>390</b>	<b>100%</b>
<b>Violations</b>																
Uncontrollable Non-Issued	11	10	11	10	8	11	6	9	9	10	5	14	10	68%	38	76%
Controllable Non-Issued	1	0	2	0	0	0	0	1	0	0	0	0	0	2%	4	9%
Citations	4	8	9	6	1	1	4	1	0	2	5	9	4	30%	8	16%
<b>Total:</b>	<b>16</b>	<b>18</b>	<b>22</b>	<b>16</b>	<b>9</b>	<b>12</b>	<b>10</b>	<b>11</b>	<b>9</b>	<b>12</b>	<b>10</b>	<b>23</b>	<b>14</b>	<b>100%</b>	<b>50</b>	<b>100%</b>
<b>Non-Violations</b>																
Rear Axle Violation	0	0	0	0	0	0	0	0	0	0	0	0	0	0%	0	0%
Emergency Vehicle	22	27	32	23	24	21	17	22	20	19	11	14	21	7%	26	7%
Right Turn	0	0	0	0	0	0	0	0	0	0	0	0	0	0%	0	0%
No Violation Occurred	341	334	301	255	249	269	257	260	226	232	215	276	268	93%	340	93%
<b>Total:</b>	<b>363</b>	<b>361</b>	<b>333</b>	<b>278</b>	<b>273</b>	<b>290</b>	<b>274</b>	<b>282</b>	<b>246</b>	<b>251</b>	<b>226</b>	<b>290</b>	<b>289</b>	<b>100%</b>	<b>366</b>	<b>100%</b>
<b>Uncontrollable Non-Issued Violations</b>																
No Plate	2	1	1	0	1	0	0	0	2	0	0	0	1	6%	1	12%
Out of State Plate	0	0	0	0	0	0	0	0	0	0	0	0	0	0%	0	1%
Glare on Plate	0	0	0	1	0	0	2	0	0	0	0	0	0	3%	0	3%
Illegible Plate	0	1	0	0	0	0	0	1	0	0	0	0	0	2%	0	2%
Plate Obstructed	0	0	0	0	0	0	1	0	0	0	0	0	0	1%	0	1%
Windshield Glare	0	0	0	1	1	0	0	0	0	0	0	0	0	2%	1	7%
Driver Obstructed	0	0	1	0	0	0	1	0	0	0	0	0	0	2%	1	7%
Car Obstructed	9	6	7	6	5	11	2	8	5	9	3	7	7	68%	5	48%
No DMV Match Found	0	2	2	1	1	0	0	0	1	0	2	2	1	10%	1	13%
LASD Expired	0	0	0	0	0	0	0	0	0	0	0	0	0	0%	0	4%
LASD Return	0	0	0	1	0	0	0	0	1	1	0	2	0	71%	0	2%
Other	0	0	0	0	0	0	0	0	0	0	0	3	0	3%	0	0%
<b>Total:</b>	<b>11</b>	<b>10</b>	<b>11</b>	<b>10</b>	<b>8</b>	<b>11</b>	<b>6</b>	<b>9</b>	<b>9</b>	<b>10</b>	<b>5</b>	<b>14</b>	<b>10</b>	<b>100%</b>	<b>11</b>	<b>100%</b>
<b>Controllable Non-Issued Violations</b>																
Framing of Plate	0	1	0	0	0	0	0	0	0	0	0	0	0	14%	0	6%
Focus / Clarity of Plate	0	0	0	0	0	0	0	0	0	0	0	0	0	0%	1	12%
Dark Interior	1	0	2	0	0	0	0	1	0	0	0	0	0	57%	1	20%
Framing of Driver	0	2	0	0	0	0	0	0	0	0	0	0	0	29%	0	2%
Focus / Clarity of Driver	0	0	0	0	0	0	0	0	0	0	0	0	0	0%	0	4%
Framing of Car	0	0	0	0	0	0	0	0	0	0	0	0	0	0%	2	54%
Data/Operator Error	0	0	0	0	0	0	0	0	0	0	0	0	0	0%	0	0%
Exposure	0	0	0	0	0	0	0	0	0	0	0	0	0	0%	0	2%
Equipment Malfunction	0	0	0	0	0	0	0	0	0	0	0	0	0	0%	0	0%
ACS Expired	0	0	0	0	0	0	0	0	0	0	0	0	0	0%	0	0%
<b>Total:</b>	<b>1</b>	<b>0</b>	<b>2</b>	<b>0</b>	<b>0</b>	<b>0</b>	<b>0</b>	<b>1</b>	<b>0</b>	<b>0</b>	<b>0</b>	<b>0</b>	<b>1</b>	<b>100%</b>	<b>4</b>	<b>100%</b>
<b>Summary Metrics</b>													<b>Year to Date Monthly Average</b>		<b>2010 Monthly Average</b>	
Daily Average Vehicle Passes	504	504	459	414	469	511	456	531	480	477	521	476	483		525	
Average Issued Speed	17	23	21	22	18	21	21	22	0	26	21	28	22		20	
Average Issued Red Seconds	52.3	67.5	55.5	50.2	80.1	1.2	79.0	99.9	0	0.2	8.4	11.6	46		75.9	
Citation / Violation Issuance	25%	44%	41%	38%	11%	8%	40%	9%	0%	17%	50%	39%	27%		16%	
Controllable Issuance Rate	80%	100%	82%	100%	100%	100%	100%	50%	0%	100%	100%	100%	92%		20%	

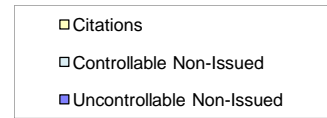
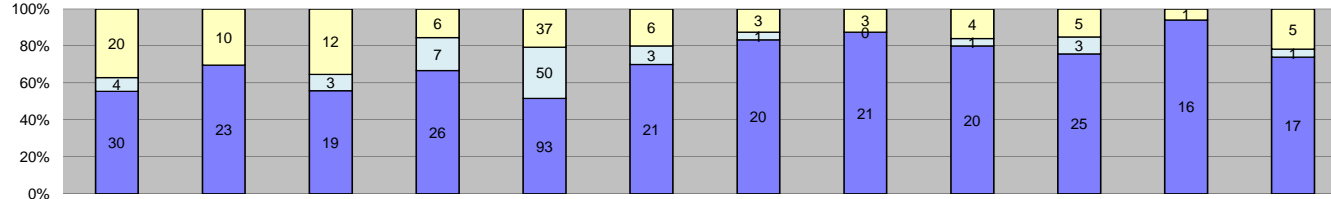


Events	Jan-11	Feb-11	Mar-11	Apr-11	May-11	Jun-11	Jul-11	Aug-11	Sep-11	Oct-11	Nov-11	Dec-11	Year to Date Monthly Average		2010 Monthly Average	
													Quantity	%	Quantity	%
Non-Violations	452	455	551	541	534	552	506	517	440	444	376	658	502	95%	409	94%
Violations	23	6	32	34	29	31	30	49	18	13	12	25	25	5%	24	6%
<b>Total:</b>	<b>475</b>	<b>461</b>	<b>583</b>	<b>575</b>	<b>563</b>	<b>583</b>	<b>536</b>	<b>566</b>	<b>458</b>	<b>457</b>	<b>388</b>	<b>683</b>	<b>527</b>	<b>100%</b>	<b>433</b>	<b>100%</b>
<b>Violations</b>																
Uncontrollable Non-Issued	10	0	21	20	18	21	20	31	16	12	8	17	16	64%	16	66%
Controllable Non-Issued	4	0	1	1	1	2	2	1	0	0	0	0	1	4%	2	7%
Citations	9	6	10	13	10	8	8	17	2	1	4	8	8	32%	6	27%
<b>Total:</b>	<b>23</b>	<b>6</b>	<b>32</b>	<b>34</b>	<b>29</b>	<b>31</b>	<b>30</b>	<b>49</b>	<b>18</b>	<b>13</b>	<b>12</b>	<b>25</b>	<b>25</b>	<b>100%</b>	<b>24</b>	<b>100%</b>
<b>Non-Violations</b>																
Rear Axle Violation	0	0	0	0	1	0	0	0	0	0	0	0	0	0%	0	0%
Emergency Vehicle	2	4	2	3	4	4	4	10	3	3	3	0	4	1%	4	1%
Right Turn	0	0	0	0	0	0	0	0	0	0	0	0	0	0%	0	0%
No Violation Occurred	450	451	549	538	529	548	502	507	437	441	373	658	499	99%	409	99%
<b>Total:</b>	<b>452</b>	<b>455</b>	<b>551</b>	<b>541</b>	<b>534</b>	<b>552</b>	<b>506</b>	<b>517</b>	<b>440</b>	<b>444</b>	<b>376</b>	<b>658</b>	<b>502</b>	<b>100%</b>	<b>412</b>	<b>100%</b>
<b>Uncontrollable Non-Issued Violations</b>																
No Plate	1	3	3	3	0	3	2	3	1	4	1	3	2	13%	2	16%
Out of State Plate	0	0	0	0	0	0	0	0	0	0	0	0	0	0%	0	3%
Glare on Plate	0	0	0	1	0	0	0	0	0	0	0	0	0	0%	0	0%
Illegible Plate	0	2	0	0	0	0	0	1	0	0	0	1	0	2%	0	3%
Plate Obstructed	0	0	0	0	0	0	0	0	0	0	0	1	0	0%	0	1%
Windshield Glare	0	2	4	2	5	2	1	5	2	0	0	1	2	11%	2	15%
Driver Obstructed	3	2	5	2	4	3	2	8	3	3	0	1	3	17%	3	21%
Car Obstructed	5	8	6	9	8	9	10	6	9	3	4	9	7	41%	4	28%
No DMV Match Found	1	1	1	3	0	1	2	3	1	2	2	0	1	8%	1	11%
LASD Expired	0	0	0	0	0	2	0	0	0	0	0	0	0	1%	0	3%
LASD Return	0	0	1	0	1	1	3	5	0	0	1	0	1	100%	0	0%
Other	0	0	1	0	0	0	0	0	0	0	0	1	0	1%	0	0%
<b>Total:</b>	<b>10</b>	<b>0</b>	<b>21</b>	<b>20</b>	<b>18</b>	<b>21</b>	<b>20</b>	<b>31</b>	<b>16</b>	<b>12</b>	<b>8</b>	<b>17</b>	<b>18</b>	<b>100%</b>	<b>13</b>	<b>100%</b>
<b>Controllable Non-Issued Violations</b>																
Framing of Plate	0	0	0	0	1	0	0	1	0	0	0	0	0	17%	0	0%
Focus / Clarity of Plate	1	0	0	0	0	0	0	0	0	0	0	0	0	8%	0	5%
Dark Interior	3	0	1	0	0	2	2	0	0	0	0	0	1	67%	0	14%
Framing of Driver	0	0	0	0	0	0	0	0	0	0	0	0	0	0%	0	5%
Focus / Clarity of Driver	0	0	0	0	0	0	0	0	0	0	0	0	0	0%	0	0%
Framing of Car	0	0	0	1	0	0	0	0	0	0	0	0	0	8%	1	76%
Data/Operator Error	0	0	0	0	0	0	0	0	0	0	0	0	0	0%	0	0%
Exposure	0	0	0	0	0	0	0	0	0	0	0	0	0	0%	0	0%
Equipment Malfunction	0	0	0	0	0	0	0	0	0	0	0	0	0	0%	0	0%
ACS Expired	0	0	0	0	0	0	0	0	0	0	0	0	0	0%	0	0%
<b>Total:</b>	<b>4</b>	<b>0</b>	<b>1</b>	<b>1</b>	<b>1</b>	<b>2</b>	<b>2</b>	<b>1</b>	<b>0</b>	<b>0</b>	<b>0</b>	<b>0</b>	<b>1</b>	<b>100%</b>	<b>2</b>	<b>100%</b>
<b>Summary Metrics</b>													<b>Year to Date Monthly Average</b>		<b>2010 Monthly Average</b>	
Daily Average Vehicle Passes	304	293	314	279	315	328	276	333	312	307	315	293	306		303	
Average Issued Speed	18	18	18	17	18	19	18	17	21	17	19	20	18		18	
Average Issued Red Seconds	78.9	66.1	37.2	75.2	87.5	81.6	69.7	64.0	1.1	71.8	25.5	26.6	57		71.2	
Citation / Violation Issuance	39%	100%	31%	38%	34%	26%	27%	35%	11%	8%	33%	32%	35%		27%	
Controllable Issuance Rate	69%	100%	91%	93%	91%	80%	80%	94%	100%	100%	100%	100%	92%		55%	

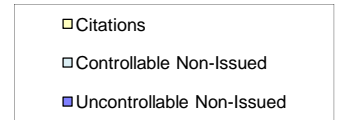
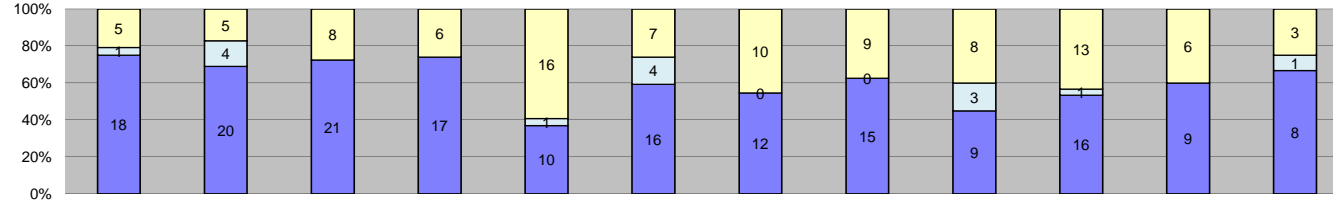




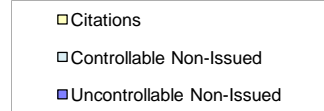
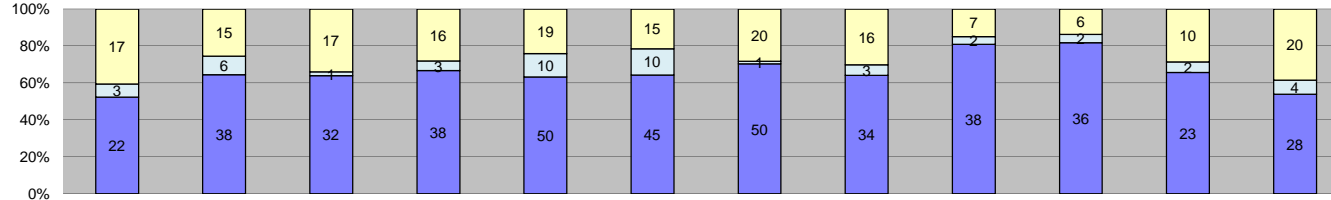
Events	Jan-11	Feb-11	Mar-11	Apr-11	May-11	Jun-11	Jul-11	Aug-11	Sep-11	Oct-11	Nov-11	Dec-11	Year to Date Monthly Average		2010 Monthly Average	
													Quantity	%	Quantity	%
Non-Violations	164	160	252	159	172	160	170	158	166	138	183	153	170	96%	191	88%
Violations	7	4	9	8	7	13	7	7	7	11	7	7	8	4%	27	12%
<b>Total:</b>	<b>171</b>	<b>164</b>	<b>261</b>	<b>167</b>	<b>179</b>	<b>173</b>	<b>177</b>	<b>165</b>	<b>173</b>	<b>149</b>	<b>190</b>	<b>160</b>	<b>177</b>	<b>100%</b>	<b>218</b>	<b>100%</b>
<b>Violations</b>																
Uncontrollable Non-Issued	6	0	9	5	5	13	5	1	5	6	4	4	5	67%	16	58%
Controllable Non-Issued	0	0	0	0	0	0	0	0	0	0	0	0	0	0%	1	3%
Citations	1	4	0	3	2	0	2	6	2	5	3	3	3	33%	11	39%
<b>Total:</b>	<b>7</b>	<b>4</b>	<b>9</b>	<b>8</b>	<b>7</b>	<b>13</b>	<b>7</b>	<b>7</b>	<b>7</b>	<b>11</b>	<b>7</b>	<b>7</b>	<b>8</b>	<b>100%</b>	<b>27</b>	<b>100%</b>
<b>Non-Violations</b>																
Rear Axle Violation	0	0	0	0	0	0	0	0	0	0	0	0	0	0%	0	0%
Emergency Vehicle	11	9	4	3	3	6	7	7	7	1	1	2	5	3%	6	3%
Right Turn	0	0	0	0	0	0	0	0	0	0	0	0	0	0%	0	0%
No Violation Occurred	153	151	248	156	169	154	163	151	159	137	182	151	165	97%	191	97%
<b>Total:</b>	<b>164</b>	<b>160</b>	<b>252</b>	<b>159</b>	<b>172</b>	<b>160</b>	<b>170</b>	<b>158</b>	<b>166</b>	<b>138</b>	<b>183</b>	<b>153</b>	<b>170</b>	<b>100%</b>	<b>196</b>	<b>100%</b>
<b>Uncontrollable Non-Issued Violations</b>																
No Plate	1	1	0	1	1	3	1	0	0	0	0	1	1	13%	2	22%
Out of State Plate	0	0	0	0	0	0	1	0	0	1	0	0	0	3%	1	5%
Glare on Plate	0	0	0	0	0	0	0	0	0	0	0	0	0	0%	0	0%
Illegible Plate	0	0	0	0	0	0	0	0	0	0	0	0	0	0%	0	0%
Plate Obstructed	0	0	0	0	0	0	0	0	0	0	0	0	0	0%	0	0%
Windshield Glare	0	0	0	0	0	0	0	0	0	0	0	0	0	0%	0	2%
Driver Obstructed	1	0	1	2	0	1	1	0	0	1	0	0	1	10%	1	9%
Car Obstructed	2	1	8	2	2	7	2	1	4	1	4	3	3	54%	3	25%
No DMV Match Found	2	3	0	0	0	1	0	0	1	3	0	0	1	14%	3	26%
LASD Expired	0	0	0	0	0	0	0	0	0	0	0	0	0	0%	1	5%
LASD Return	0	0	0	0	2	1	0	0	0	0	0	0	0	0	1	120%
Other	0	1	0	0	0	0	0	0	0	0	0	0	0	1%	0	2%
<b>Total:</b>	<b>6</b>	<b>0</b>	<b>9</b>	<b>5</b>	<b>5</b>	<b>13</b>	<b>5</b>	<b>1</b>	<b>5</b>	<b>6</b>	<b>4</b>	<b>4</b>	<b>6</b>	<b>100%</b>	<b>11</b>	<b>100%</b>
<b>Controllable Non-Issued Violations</b>																
Framing of Plate	0	0	0	0	0	0	0	0	0	0	0	0	0	0	0	0%
Focus / Clarity of Plate	0	0	0	0	0	0	0	0	0	0	0	0	0	0	0	0%
Dark Interior	0	0	0	0	0	0	0	0	0	0	0	0	0	0	0	20%
Framing of Driver	0	0	0	0	0	0	0	0	0	0	0	0	0	0	0	0%
Focus / Clarity of Driver	0	0	0	0	0	0	0	0	0	0	0	0	0	0	0	0%
Framing of Car	0	0	0	0	0	0	0	0	0	0	0	0	0	0	0	80%
Data/Operator Error	0	0	0	0	0	0	0	0	0	0	0	0	0	0	0	0%
Exposure	0	0	0	0	0	0	0	0	0	0	0	0	0	0	0	0%
Equipment Malfunction	0	0	0	0	0	0	0	0	0	0	0	0	0	0	0	0%
ACS Expired	0	0	0	0	0	0	0	0	0	0	0	0	0	0	0	0%
<b>Total:</b>	<b>0</b>	<b>0</b>	<b>0</b>	<b>0</b>	<b>0</b>	<b>0</b>	<b>0</b>	<b>0</b>	<b>0</b>	<b>0</b>	<b>0</b>	<b>0</b>	<b>0</b>	<b>100%</b>	<b>0</b>	<b>100%</b>
<b>Summary Metrics</b>													<b>Year to Date Monthly Average</b>		<b>2010 Monthly Average</b>	
Daily Average Vehicle Passes	219	227	234	202	234	247	244	229	240	203	227	224	228		220	
Average Issued Speed	17	16	0	20	17	0	16	17	21	17	18	19	16		17	
Average Issued Red Seconds	14.3	64.8	0.0	34.1	55.7	0	93.7	77.2	72.0	67.9	79.8	66.8	57		69.5	
Citation / Violation Issuance	14%	100%	0%	38%	29%	0%	29%	86%	29%	45%	43%	43%	38%		39%	
Controllable Issuance Rate	100%	100%	0%	100%	100%	0%	100%	100%	100%	100%	100%	100%	100%		64%	



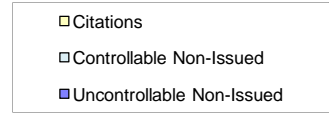
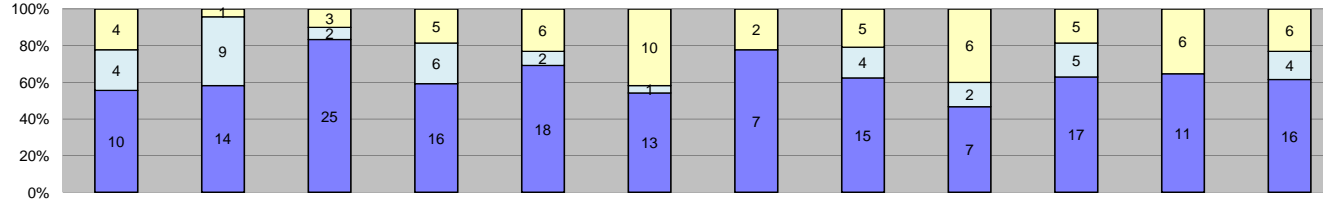
Events	Jan-11	Feb-11	Mar-11	Apr-11	May-11	Jun-11	Jul-11	Aug-11	Sep-11	Oct-11	Nov-11	Dec-11	Year to Date Monthly Average		2010 Monthly Average	
	Quantity	Quantity	Quantity	Quantity	Quantity	Quantity	Quantity	Quantity	Quantity	Quantity	Quantity	Quantity	Quantity	%	%	%
Non-Violations	459	445	498	501	597	425	396	512	479	558	462	794	511	92%	461	91%
Violations	54	33	34	39	180	30	24	24	25	33	17	23	43	8%	44	9%
<b>Total:</b>	<b>513</b>	<b>478</b>	<b>532</b>	<b>540</b>	<b>777</b>	<b>455</b>	<b>420</b>	<b>536</b>	<b>504</b>	<b>591</b>	<b>479</b>	<b>817</b>	<b>554</b>	<b>100%</b>	<b>505</b>	<b>100%</b>
<b>Violations</b>																
Uncontrollable Non-Issued	30	23	19	26	93	21	20	21	20	25	16	17	28	64%	26	59%
Controllable Non-Issued	4	0	3	7	50	3	1	0	1	3	0	1	6	14%	5	12%
Citations	20	10	12	6	37	6	3	3	4	5	1	5	9	22%	13	29%
<b>Total:</b>	<b>54</b>	<b>33</b>	<b>34</b>	<b>39</b>	<b>180</b>	<b>30</b>	<b>24</b>	<b>24</b>	<b>25</b>	<b>33</b>	<b>17</b>	<b>23</b>	<b>43</b>	<b>100%</b>	<b>44</b>	<b>100%</b>
<b>Non-Violations</b>																
Rear Axle Violation	0	0	0	0	0	0	0	0	0	1	0	0	0	0%	0	0%
Emergency Vehicle	7	4	6	4	3	7	0	3	3	2	3	5	4	1%	6	1%
Right Turn	0	0	0	0	0	0	0	0	0	0	0	0	0	0%	0	0%
No Violation Occurred	452	441	492	497	594	418	396	509	476	555	459	789	507	99%	461	99%
<b>Total:</b>	<b>459</b>	<b>445</b>	<b>498</b>	<b>501</b>	<b>597</b>	<b>425</b>	<b>396</b>	<b>512</b>	<b>479</b>	<b>558</b>	<b>462</b>	<b>794</b>	<b>511</b>	<b>100%</b>	<b>467</b>	<b>100%</b>
<b>Uncontrollable Non-Issued Violations</b>																
No Plate	4	5	2	1	11	2	7	3	2	3	3	1	4	13%	3	15%
Out of State Plate	0	0	0	2	2	0	1	0	0	0	1	1	1	2%	1	3%
Glare on Plate	0	0	0	0	0	1	1	0	0	0	0	0	0	1%	0	0%
Illegible Plate	0	2	3	1	1	1	1	2	0	1	3	1	1	5%	2	8%
Plate Obstructed	0	0	0	0	1	0	0	0	0	0	1	0	0	1%	0	0%
Windshield Glare	2	2	4	8	44	3	1	1	0	1	1	0	6	20%	3	15%
Driver Obstructed	8	5	1	6	12	2	1	1	4	3	0	1	4	13%	3	11%
Car Obstructed	9	6	6	6	7	10	3	8	8	10	6	4	7	25%	5	22%
No DMV Match Found	3	2	2	1	7	0	1	2	3	3	1	1	2	8%	3	14%
LASD Expired	0	0	0	0	0	0	0	0	0	0	0	0	0	0%	0	2%
LASD Return	1	1	1	1	7	2	4	4	3	4	0	3	3	40%	2	56%
Other	3	0	0	0	1	0	0	0	0	0	0	5	1	3%	0	1%
<b>Total:</b>	<b>30</b>	<b>23</b>	<b>19</b>	<b>26</b>	<b>93</b>	<b>21</b>	<b>20</b>	<b>21</b>	<b>20</b>	<b>25</b>	<b>16</b>	<b>17</b>	<b>28</b>	<b>100%</b>	<b>22</b>	<b>100%</b>
<b>Controllable Non-Issued Violations</b>																
Framing of Plate	0	3	0	0	3	1	0	0	0	1	0	1	1	12%	1	15%
Focus / Clarity of Plate	0	0	0	1	0	1	0	0	0	0	0	0	0	3%	1	20%
Dark Interior	4	1	2	6	11	0	0	0	0	0	0	0	2	31%	1	37%
Framing of Driver	0	0	0	0	0	0	0	0	0	0	0	0	0	0%	0	0%
Focus / Clarity of Driver	0	0	0	0	3	0	1	0	0	1	0	0	0	6%	0	10%
Framing of Car	0	0	1	0	0	0	0	0	1	0	0	0	0	3%	1	20%
Data/Operator Error	0	0	0	0	0	0	0	0	0	0	0	0	0	0%	0	0%
Exposure	0	0	0	0	0	0	0	0	0	0	0	0	0	0%	0	0%
Equipment Malfunction	0	0	0	0	32	1	0	0	0	0	0	0	3	43%	0	0%
ACS Expired	0	0	0	0	1	0	0	0	0	1	0	0	0	3%	0	0%
<b>Total:</b>	<b>4</b>	<b>0</b>	<b>3</b>	<b>7</b>	<b>50</b>	<b>3</b>	<b>1</b>	<b>0</b>	<b>1</b>	<b>3</b>	<b>0</b>	<b>1</b>	<b>6</b>	<b>100%</b>	<b>3</b>	<b>100%</b>
<b>Summary Metrics</b>													<b>Year to Date Monthly Average</b>		<b>2010 Monthly Average</b>	
Daily Average Vehicle Passes	566	530	560	531	567	585	481	561	470	481	585	513	536		610	
Average Issued Speed	17	17	16	17	16	17	20	20	18	18	17	16	17		18	
Average Issued Red Seconds	52.7	55.8	43.8	41.0	55.3	55.6	52.6	20.6	41.1	40.1	99.9	33.4	49		43.0	
Citation / Violation Issuance	37%	30%	35%	15%	21%	20%	13%	13%	16%	15%	6%	22%	20%		29%	
Controllable Issuance Rate	83%	100%	80%	46%	43%	67%	75%	100%	80%	63%	100%	83%	77%		58%	



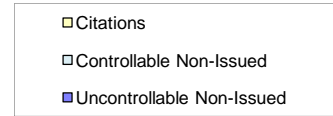
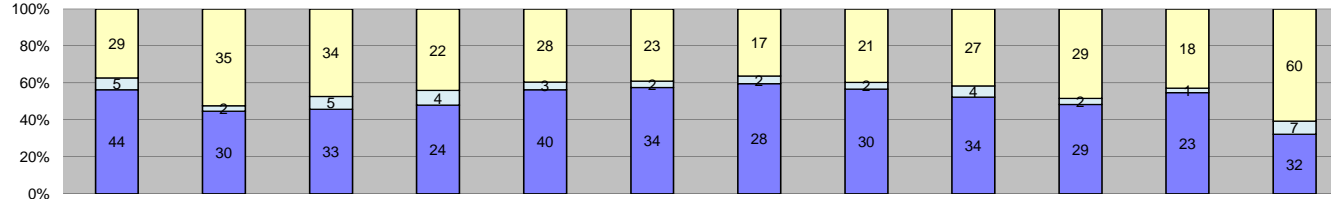
Events	Jan-11	Feb-11	Mar-11	Apr-11	May-11	Jun-11	Jul-11	Aug-11	Sep-11	Oct-11	Nov-11	Dec-11	Year to Date Monthly Average		2010 Monthly Average	
	Quantity	Quantity	Quantity	Quantity	Quantity	Quantity	Quantity	Quantity	Quantity	Quantity	Quantity	Quantity	Quantity	%	%	%
Non-Violations	438	460	510	406	415	432	429	340	251	317	268	352	385	94%	401	92%
Violations	24	29	29	23	27	27	22	24	20	30	15	12	24	6%	33	8%
<b>Total:</b>	<b>462</b>	<b>489</b>	<b>539</b>	<b>429</b>	<b>442</b>	<b>459</b>	<b>451</b>	<b>364</b>	<b>271</b>	<b>347</b>	<b>283</b>	<b>364</b>	<b>408</b>	<b>100%</b>	<b>434</b>	<b>100%</b>
<b>Violations</b>																
Uncontrollable Non-Issued	18	20	21	17	10	16	12	15	9	16	9	8	14	61%	21	63%
Controllable Non-Issued	1	4	0	0	1	4	0	0	3	1	0	1	1	5%	3	10%
Citations	5	5	8	6	16	7	10	9	8	13	6	3	8	34%	9	27%
<b>Total:</b>	<b>24</b>	<b>29</b>	<b>29</b>	<b>23</b>	<b>27</b>	<b>27</b>	<b>22</b>	<b>24</b>	<b>20</b>	<b>30</b>	<b>15</b>	<b>12</b>	<b>24</b>	<b>100%</b>	<b>33</b>	<b>100%</b>
<b>Non-Violations</b>																
Rear Axle Violation	0	0	0	0	0	0	0	0	0	0	0	0	0	0%	0	0%
Emergency Vehicle	8	15	9	6	12	10	5	9	5	7	1	4	8	2%	7	2%
Right Turn	0	0	0	0	0	0	0	0	0	0	0	0	0	0%	0	0%
No Violation Occurred	430	445	501	400	403	422	424	331	246	310	267	348	377	98%	401	98%
<b>Total:</b>	<b>438</b>	<b>460</b>	<b>510</b>	<b>406</b>	<b>415</b>	<b>432</b>	<b>429</b>	<b>340</b>	<b>251</b>	<b>317</b>	<b>268</b>	<b>352</b>	<b>385</b>	<b>100%</b>	<b>408</b>	<b>100%</b>
<b>Uncontrollable Non-Issued Violations</b>																
No Plate	4	6	8	0	4	3	1	2	3	3	0	0	3	20%	3	18%
Out of State Plate	0	1	0	2	0	0	0	1	0	1	0	0	0	3%	0	1%
Glare on Plate	3	2	0	2	1	1	2	1	1	1	0	0	1	8%	1	5%
Illegible Plate	2	0	0	1	0	1	0	0	0	0	2	1	1	4%	2	11%
Plate Obstructed	0	0	1	1	1	1	1	0	0	0	1	0	1	4%	0	0%
Windshield Glare	0	0	0	0	1	1	0	1	0	0	0	0	0	2%	0	2%
Driver Obstructed	2	2	6	3	0	1	2	2	1	0	1	1	2	12%	2	11%
Car Obstructed	3	6	6	5	3	6	3	6	2	7	4	2	4	31%	5	34%
No DMV Match Found	3	2	0	3	0	2	1	1	0	2	0	2	1	9%	2	12%
LASD Expired	0	0	0	0	0	0	0	0	1	0	0	0	0	1%	0	3%
LASD Return	0	0	0	0	0	0	2	1	1	2	1	1	1	53%	1	17%
Other	1	1	0	0	0	0	0	0	0	0	0	1	0	2%	0	1%
<b>Total:</b>	<b>18</b>	<b>20</b>	<b>21</b>	<b>17</b>	<b>10</b>	<b>16</b>	<b>12</b>	<b>15</b>	<b>9</b>	<b>16</b>	<b>9</b>	<b>8</b>	<b>14</b>	<b>100%</b>	<b>14</b>	<b>100%</b>
<b>Controllable Non-Issued Violations</b>																
Framing of Plate	1	1	0	0	0	0	0	0	2	1	0	1	1	40%	1	34%
Focus / Clarity of Plate	0	0	0	0	0	0	0	0	0	0	0	0	0	0%	0	6%
Dark Interior	0	1	0	0	0	2	0	0	1	0	0	0	0	27%	0	9%
Framing of Driver	0	0	0	0	1	2	0	0	0	0	0	0	0	20%	0	9%
Focus / Clarity of Driver	0	0	0	0	0	0	0	0	0	0	0	0	0	0%	0	3%
Framing of Car	0	2	0	0	0	0	0	0	0	0	0	0	0	13%	1	40%
Data/Operator Error	0	0	0	0	0	0	0	0	0	0	0	0	0	0%	0	0%
Exposure	0	0	0	0	0	0	0	0	0	0	0	0	0	0%	0	0%
Equipment Malfunction	0	0	0	0	0	0	0	0	0	0	0	0	0	0%	0	0%
ACS Expired	0	0	0	0	0	0	0	0	0	0	0	0	0	0%	0	0%
<b>Total:</b>	<b>1</b>	<b>4</b>	<b>0</b>	<b>0</b>	<b>1</b>	<b>4</b>	<b>0</b>	<b>0</b>	<b>3</b>	<b>1</b>	<b>0</b>	<b>1</b>	<b>1</b>	<b>100%</b>	<b>3</b>	<b>100%</b>
<b>Summary Metrics</b>																
Daily Average Vehicle Passes	380	395	393	343	399	400	357	397	314	362	393	354	Year to Date Monthly Average		2010 Monthly Average	
Average Issued Speed	18	20	19	19	17	17	17	18	17	18	20	17	374		389	
Average Issued Red Seconds	65.4	76.3	96.2	82.3	86.5	78.0	60.1	78.8	77.3	74.6	94.8	63.0	78		77.0	
Citation / Violation Issuance	21%	17%	28%	26%	59%	26%	45%	38%	40%	43%	40%	25%	34%		27%	
Controllable Issuance Rate	83%	56%	100%	100%	94%	64%	100%	100%	73%	93%	100%	75%	86%		46%	



Events	Jan-11	Feb-11	Mar-11	Apr-11	May-11	Jun-11	Jul-11	Aug-11	Sep-11	Oct-11	Nov-11	Dec-11	Year to Date Monthly Average		2010 Monthly Average	
	Quantity	Quantity	Quantity	Quantity	Quantity	Quantity	Quantity	Quantity	Quantity	Quantity	Quantity	Quantity	Quantity	%	%	%
Non-Violations	477	638	497	476	510	528	494	422	348	410	320	479	467	89%	472	89%
Violations	42	59	50	57	79	70	71	53	47	44	35	52	55	11%	61	11%
<b>Total:</b>	<b>519</b>	<b>697</b>	<b>547</b>	<b>533</b>	<b>589</b>	<b>598</b>	<b>565</b>	<b>475</b>	<b>395</b>	<b>454</b>	<b>355</b>	<b>531</b>	<b>522</b>	<b>100%</b>	<b>533</b>	<b>100%</b>
<b>Violations</b>																
Uncontrollable Non-Issued	22	38	32	38	50	45	50	34	38	36	23	28	36	66%	30	49%
Controllable Non-Issued	3	6	1	3	10	10	1	3	2	2	2	4	4	7%	9	15%
Citations	17	15	17	16	19	15	20	16	7	6	10	20	15	27%	22	36%
<b>Total:</b>	<b>42</b>	<b>59</b>	<b>50</b>	<b>57</b>	<b>79</b>	<b>70</b>	<b>71</b>	<b>53</b>	<b>47</b>	<b>44</b>	<b>35</b>	<b>52</b>	<b>55</b>	<b>100%</b>	<b>61</b>	<b>100%</b>
<b>Non-Violations</b>																
Rear Axle Violation	0	0	0	0	0	0	0	0	1	0	0	0	0	0%	0	0%
Emergency Vehicle	6	8	10	2	6	8	6	8	5	6	3	4	6	1%	6	1%
Right Turn	0	0	0	0	0	0	0	0	0	0	0	0	0	0%	0	0%
No Violation Occurred	471	630	487	474	504	520	488	414	342	404	317	475	461	99%	472	99%
<b>Total:</b>	<b>477</b>	<b>638</b>	<b>497</b>	<b>476</b>	<b>510</b>	<b>528</b>	<b>494</b>	<b>422</b>	<b>348</b>	<b>410</b>	<b>320</b>	<b>479</b>	<b>467</b>	<b>100%</b>	<b>479</b>	<b>100%</b>
<b>Uncontrollable Non-Issued Violations</b>																
No Plate	3	3	4	5	3	5	10	4	2	5	2	3	4	11%	3	12%
Out of State Plate	0	0	0	0	0	0	0	0	0	1	1	0	0	0%	0	2%
Glare on Plate	0	1	1	2	4	0	1	0	0	3	0	1	1	3%	1	3%
Illegible Plate	1	1	0	0	0	0	2	0	0	0	0	0	0	1%	1	5%
Plate Obstructed	0	1	0	0	0	0	0	0	0	0	0	0	0	0%	0	1%
Windshield Glare	1	4	6	7	9	5	7	3	7	2	1	2	5	12%	3	11%
Driver Obstructed	3	1	5	3	8	4	4	4	3	4	4	2	4	10%	3	12%
Car Obstructed	5	20	9	12	10	13	11	10	12	8	4	6	10	28%	6	24%
No DMV Match Found	5	3	3	3	4	4	5	2	4	2	1	4	3	9%	4	14%
LASD Expired	0	0	0	0	0	0	0	0	0	0	0	0	0	0%	1	4%
LASD Return	1	0	0	6	12	14	10	11	10	11	10	7	8	196%	3	51%
Other	3	4	4	0	0	0	0	0	0	0	0	3	1	3%	1	2%
<b>Total:</b>	<b>22</b>	<b>38</b>	<b>32</b>	<b>38</b>	<b>50</b>	<b>45</b>	<b>50</b>	<b>34</b>	<b>38</b>	<b>36</b>	<b>23</b>	<b>28</b>	<b>36</b>	<b>100%</b>	<b>27</b>	<b>100%</b>
<b>Controllable Non-Issued Violations</b>																
Framing of Plate	0	1	0	0	2	1	0	0	0	1	0	1	1	13%	1	14%
Focus / Clarity of Plate	1	0	0	0	0	0	0	0	0	0	0	0	0	2%	1	10%
Dark Interior	2	1	0	1	4	5	0	1	0	0	0	1	1	32%	1	16%
Framing of Driver	0	2	1	1	3	1	1	1	1	1	2	2	1	34%	0	3%
Focus / Clarity of Driver	0	1	0	1	0	0	0	0	0	0	0	0	0	4%	0	1%
Framing of Car	0	1	0	0	1	1	0	1	1	0	0	0	0	11%	1	19%
Data/Operator Error	0	0	0	0	0	0	0	0	0	0	0	0	0	0%	0	0%
Exposure	0	0	0	0	0	0	0	0	0	0	0	0	0	0%	2	33%
Equipment Malfunction	0	0	0	0	0	2	0	0	0	0	0	0	0	4%	0	4%
ACS Expired	0	0	0	0	0	0	0	0	0	0	0	0	0	0%	0	0%
<b>Total:</b>	<b>3</b>	<b>6</b>	<b>1</b>	<b>3</b>	<b>10</b>	<b>10</b>	<b>1</b>	<b>3</b>	<b>2</b>	<b>2</b>	<b>2</b>	<b>4</b>	<b>4</b>	<b>100%</b>	<b>6</b>	<b>100%</b>
<b>Summary Metrics</b>																
Daily Average Vehicle Passes	597	593	590	469	630	643	555	594	571	558	617	558	Year to Date Monthly Average		2010 Monthly Average	
Average Issued Speed	19	21	20	18	20	22	20	19	18	21	20	19	581		602	
Average Issued Red Seconds	15.6	27.3	34.1	47.0	60.6	24.9	52.9	35.4	43.6	20.8	36.2	30.5	36		37.5	
Citation / Violation Issuance	40%	25%	34%	28%	24%	21%	28%	30%	15%	14%	29%	38%	27%		36%	
Controllable Issuance Rate	85%	71%	94%	84%	66%	60%	95%	84%	78%	75%	83%	83%	80%		64%	



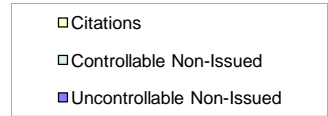
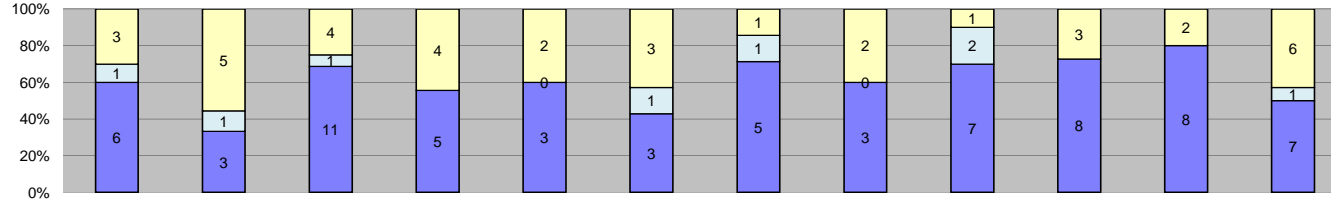
Events	Jan-11	Feb-11	Mar-11	Apr-11	May-11	Jun-11	Jul-11	Aug-11	Sep-11	Oct-11	Nov-11	Dec-11	Year to Date Monthly Average		2010 Monthly Average	
													Quantity	%	Quantity	%
Non-Violations	330	302	316	307	332	278	257	200	183	223	192	209	261	92%	275	87%
Violations	18	24	30	27	26	24	9	24	15	27	17	26	22	8%	43	13%
<b>Total:</b>	<b>348</b>	<b>326</b>	<b>346</b>	<b>334</b>	<b>358</b>	<b>302</b>	<b>266</b>	<b>224</b>	<b>198</b>	<b>250</b>	<b>209</b>	<b>235</b>	<b>283</b>	<b>100%</b>	<b>318</b>	<b>100%</b>
<b>Violations</b>																
Uncontrollable Non-Issued	10	14	25	16	18	13	7	15	7	17	11	16	14	63%	32	74%
Controllable Non-Issued	4	9	2	6	2	1	0	4	2	5	0	4	3	15%	3	7%
Citations	4	1	3	5	6	10	2	5	6	5	6	6	5	22%	8	19%
<b>Total:</b>	<b>18</b>	<b>24</b>	<b>30</b>	<b>27</b>	<b>26</b>	<b>24</b>	<b>9</b>	<b>24</b>	<b>15</b>	<b>27</b>	<b>17</b>	<b>26</b>	<b>22</b>	<b>100%</b>	<b>43</b>	<b>100%</b>
<b>Non-Violations</b>																
Rear Axle Violation	0	0	0	0	0	0	0	0	0	0	0	0	0	0%	0	0%
Emergency Vehicle	32	31	15	19	20	21	13	13	7	16	4	11	17	6%	16	6%
Right Turn	0	0	0	0	0	0	0	0	0	0	0	0	0	0%	0	0%
No Violation Occurred	298	271	301	288	312	257	244	187	176	207	188	198	244	94%	275	94%
<b>Total:</b>	<b>330</b>	<b>302</b>	<b>316</b>	<b>307</b>	<b>332</b>	<b>278</b>	<b>257</b>	<b>200</b>	<b>183</b>	<b>223</b>	<b>192</b>	<b>209</b>	<b>261</b>	<b>100%</b>	<b>292</b>	<b>100%</b>
<b>Uncontrollable Non-Issued Violations</b>																
No Plate	2	2	5	3	2	1	0	1	2	1	4	1	2	14%	4	22%
Out of State Plate	0	0	0	0	1	0	0	0	0	0	0	0	0	1%	0	2%
Glare on Plate	1	2	1	0	0	0	1	1	0	0	1	0	1	4%	0	1%
Illegible Plate	1	1	0	1	2	0	0	0	0	0	0	1	1	4%	1	3%
Plate Obstructed	0	0	1	0	1	0	0	0	0	0	0	0	0	1%	0	1%
Windshield Glare	1	1	0	1	1	1	0	2	1	1	0	0	1	5%	1	5%
Driver Obstructed	1	3	1	3	2	1	1	4	2	1	0	1	2	12%	2	13%
Car Obstructed	4	1	9	6	5	7	5	2	1	9	5	5	5	35%	4	28%
No DMV Match Found	0	1	3	1	2	1	0	0	0	2	0	1	1	7%	2	15%
LASD Expired	0	0	0	0	0	0	0	0	0	0	0	0	0	0%	0	2%
LASD Return	0	3	4	0	2	2	0	5	1	3	1	4	2	64%	0	17%
Other	0	0	1	1	0	0	0	0	0	0	0	3	0	3%	1	4%
<b>Total:</b>	<b>10</b>	<b>14</b>	<b>25</b>	<b>16</b>	<b>18</b>	<b>13</b>	<b>7</b>	<b>15</b>	<b>7</b>	<b>17</b>	<b>11</b>	<b>16</b>	<b>14</b>	<b>100%</b>	<b>16</b>	<b>100%</b>
<b>Controllable Non-Issued Violations</b>																
Framing of Plate	0	0	0	2	0	0	0	1	1	2	0	1	1	18%	0	17%
Focus / Clarity of Plate	1	2	2	2	1	0	0	1	0	0	0	1	1	26%	0	14%
Dark Interior	2	3	0	0	0	0	0	2	1	3	0	1	1	31%	1	34%
Framing of Driver	0	0	0	0	1	0	0	0	0	0	0	0	0	3%	0	3%
Focus / Clarity of Driver	0	3	0	2	0	1	0	0	0	0	0	1	1	18%	0	14%
Framing of Car	1	1	0	0	0	0	0	0	0	0	0	0	0	5%	0	17%
Data/Operator Error	0	0	0	0	0	0	0	0	0	0	0	0	0	0%	0	0%
Exposure	0	0	0	0	0	0	0	0	0	0	0	0	0	0%	0	0%
Equipment Malfunction	0	0	0	0	0	0	0	0	0	0	0	0	0	0%	0	0%
ACS Expired	0	0	0	0	0	0	0	0	0	0	0	0	0	0%	0	0%
<b>Total:</b>	<b>4</b>	<b>9</b>	<b>2</b>	<b>6</b>	<b>2</b>	<b>1</b>	<b>0</b>	<b>4</b>	<b>2</b>	<b>5</b>	<b>0</b>	<b>4</b>	<b>3</b>	<b>100%</b>	<b>2</b>	<b>100%</b>
<b>Summary Metrics</b>																
Daily Average Vehicle Passes	683	663	701	628	622	705	621	675	602	658	706	692	Year to Date Monthly Average		2010 Monthly Average	
Average Issued Speed	20	18	18	20	22	20	23	22	23	20	22	23	663		706	
Average Issued Red Seconds	25.4	98.8	8.3	80.0	17.1	55.5	19.7	54.8	65.3	73.7	60.1	26.7	49		51.0	
Citation / Violation Issuance	22%	4%	10%	19%	23%	42%	22%	21%	40%	19%	35%	23%	23%		19%	
Controllable Issuance Rate	50%	10%	60%	45%	75%	91%	100%	56%	75%	50%	100%	60%	64%		30%	



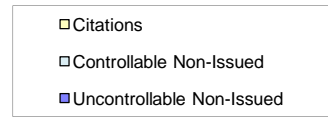
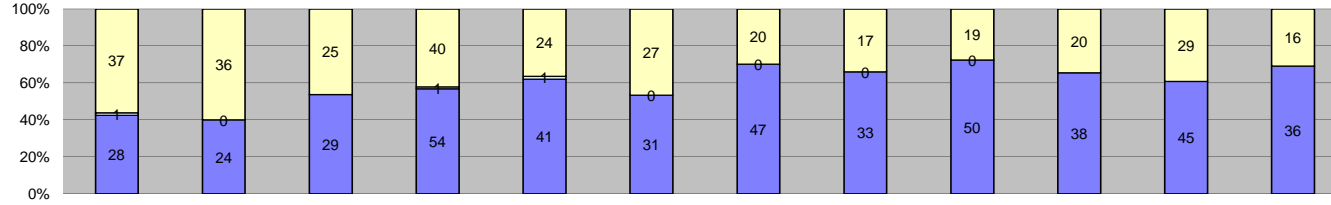
Events	Jan-11	Feb-11	Mar-11	Apr-11	May-11	Jun-11	Jul-11	Aug-11	Sep-11	Oct-11	Nov-11	Dec-11	Year to Date Monthly Average		2010 Monthly Average	
													Quantity	%	Quantity	%
Non-Violations	212	163	261	221	252	242	212	169	128	180	137	162	195	75%	242	77%
Violations	78	67	72	50	71	59	47	53	65	60	42	99	64	25%	74	23%
<b>Total:</b>	<b>290</b>	<b>230</b>	<b>333</b>	<b>271</b>	<b>323</b>	<b>301</b>	<b>259</b>	<b>222</b>	<b>193</b>	<b>240</b>	<b>179</b>	<b>261</b>	<b>259</b>	<b>100%</b>	<b>317</b>	<b>100%</b>
<b>Violations</b>																
Uncontrollable Non-Issued	44	30	33	24	40	34	28	30	34	29	23	32	32	50%	35	47%
Controllable Non-Issued	5	2	5	4	3	2	2	2	4	2	1	7	3	5%	10	13%
Citations	29	35	34	22	28	23	17	21	27	29	18	60	29	45%	30	40%
<b>Total:</b>	<b>78</b>	<b>67</b>	<b>72</b>	<b>50</b>	<b>71</b>	<b>59</b>	<b>47</b>	<b>53</b>	<b>65</b>	<b>60</b>	<b>42</b>	<b>99</b>	<b>64</b>	<b>100%</b>	<b>74</b>	<b>100%</b>
<b>Non-Violations</b>																
Rear Axle Violation	0	1	0	0	0	0	0	0	0	0	0	0	0	0%	0	0%
Emergency Vehicle	14	10	16	13	7	9	9	12	5	11	5	6	10	5%	8	3%
Right Turn	0	0	0	0	0	0	0	0	0	0	0	0	0	0%	0	0%
No Violation Occurred	198	152	245	208	245	233	203	157	123	169	132	156	185	95%	242	97%
<b>Total:</b>	<b>212</b>	<b>163</b>	<b>261</b>	<b>221</b>	<b>252</b>	<b>242</b>	<b>212</b>	<b>169</b>	<b>128</b>	<b>180</b>	<b>137</b>	<b>162</b>	<b>195</b>	<b>100%</b>	<b>251</b>	<b>100%</b>
<b>Uncontrollable Non-Issued Violations</b>																
No Plate	6	6	11	1	6	3	3	3	4	7	5	3	5	15%	5	16%
Out of State Plate	0	0	0	0	0	0	1	0	0	1	0	0	0	1%	1	3%
Glare on Plate	5	0	5	0	4	3	5	2	2	2	1	0	2	8%	1	5%
Illegible Plate	1	1	1	0	0	3	1	1	2	0	0	1	1	3%	2	7%
Plate Obstructed	2	0	0	0	0	0	0	0	0	2	0	2	1	2%	0	1%
Windshield Glare	4	1	2	5	5	6	3	7	4	0	1	5	4	11%	3	9%
Driver Obstructed	6	5	4	5	2	4	3	9	6	2	1	1	4	13%	3	10%
Car Obstructed	4	4	3	3	3	2	2	0	1	1	1	2	2	7%	2	6%
No DMV Match Found	8	6	5	5	12	7	5	5	7	6	7	10	7	22%	6	20%
LASD Expired	1	0	0	0	0	1	0	0	0	0	0	1	0	1%	3	9%
LASD Return	2	0	1	5	8	5	5	3	8	8	7	7	5	151%	4	71%
Other	5	7	1	0	0	0	0	0	0	0	0	0	1	3%	1	3%
<b>Total:</b>	<b>44</b>	<b>30</b>	<b>33</b>	<b>24</b>	<b>40</b>	<b>34</b>	<b>28</b>	<b>30</b>	<b>34</b>	<b>29</b>	<b>23</b>	<b>32</b>	<b>32</b>	<b>100%</b>	<b>31</b>	<b>100%</b>
<b>Controllable Non-Issued Violations</b>																
Framing of Plate	1	0	0	0	2	0	0	1	2	1	1	5	1	33%	2	30%
Focus / Clarity of Plate	2	0	0	0	0	0	0	0	1	0	0	0	0	8%	1	9%
Dark Interior	0	0	4	2	1	0	1	0	0	1	0	0	1	23%	1	10%
Framing of Driver	0	0	0	2	0	1	0	0	0	0	0	1	0	10%	0	3%
Focus / Clarity of Driver	0	0	0	0	0	0	1	0	0	0	0	0	0	3%	0	3%
Framing of Car	2	1	1	0	0	1	0	1	1	0	0	1	1	21%	0	7%
Data/Operator Error	0	0	0	0	0	0	0	0	0	0	0	0	0	0%	0	0%
Exposure	0	0	0	0	0	0	0	0	0	0	0	0	0	0%	2	39%
Equipment Malfunction	0	0	0	0	0	0	0	0	0	0	0	0	0	0%	0	0%
ACS Expired	0	1	0	0	0	0	0	0	0	0	0	0	0	3%	0	0%
<b>Total:</b>	<b>5</b>	<b>2</b>	<b>5</b>	<b>4</b>	<b>3</b>	<b>2</b>	<b>2</b>	<b>2</b>	<b>4</b>	<b>2</b>	<b>1</b>	<b>7</b>	<b>3</b>	<b>100%</b>	<b>6</b>	<b>100%</b>
<b>Summary Metrics</b>																
Daily Average Vehicle Passes	1,054	1,116	1,059	997	1,184	1,108	963	1,075	1,138	1,166	1,089	1,064	Year to Date Monthly Average		2010 Monthly Average	
Average Issued Speed	21	23	22	22	23	22	23	22	21	22	24	23	1,085		2,188	
Average Issued Red Seconds	20.6	20.0	26.9	17.5	20.6	35.9	28.8	22.9	35.7	21.0	2.7	2.9	21		22.3	
Citation / Violation Issuance	37%	52%	47%	44%	39%	39%	36%	40%	42%	48%	43%	61%	44%		40%	
Controllable Issuance Rate	85%	95%	87%	85%	90%	92%	89%	91%	87%	94%	95%	90%	90%		68%	



Los Angeles County MTA Gold Line  
 Approach Summary Report  
 Location 4059: WB to SB 3rd @ Eastern

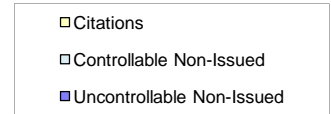
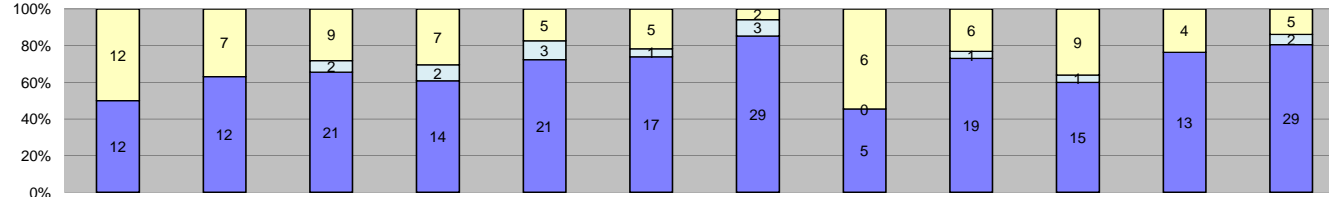


Events	2011												Year to Date Monthly Average		2010 Monthly Average	
	Jan-11	Feb-11	Mar-11	Apr-11	May-11	Jun-11	Jul-11	Aug-11	Sep-11	Oct-11	Nov-11	Dec-11	Quantity	%	Quantity	%
Non-Violations	148	129	142	138	155	143	148	104	94	84	78	117	123	93%	130	76%
Violations	10	9	16	9	5	7	7	5	10	11	10	14	9	7%	41	24%
<b>Total:</b>	<b>158</b>	<b>138</b>	<b>158</b>	<b>147</b>	<b>160</b>	<b>150</b>	<b>155</b>	<b>109</b>	<b>104</b>	<b>95</b>	<b>88</b>	<b>131</b>	<b>133</b>	<b>100%</b>	<b>172</b>	<b>100%</b>
<b>Violations</b>																
Uncontrollable Non-Issued	6	3	11	5	3	3	5	3	7	8	8	7	6	61%	31	76%
Controllable Non-Issued	1	1	1	0	0	1	1	0	2	0	0	1	1	7%	2	5%
Citations	3	5	4	4	2	3	1	2	1	3	2	6	3	32%	8	19%
<b>Total:</b>	<b>10</b>	<b>9</b>	<b>16</b>	<b>9</b>	<b>5</b>	<b>7</b>	<b>7</b>	<b>5</b>	<b>10</b>	<b>11</b>	<b>10</b>	<b>14</b>	<b>9</b>	<b>100%</b>	<b>41</b>	<b>100%</b>
<b>Non-Violations</b>																
Rear Axle Violation	1	0	0	0	0	0	0	0	0	0	0	0	0	0%	0	0%
Emergency Vehicle	24	21	24	23	37	21	21	23	23	11	8	16	21	17%	24	16%
Right Turn	0	0	0	0	0	0	0	0	0	0	0	0	0	0%	0	0%
No Violation Occurred	123	108	118	115	118	122	127	81	71	73	70	101	102	83%	130	84%
<b>Total:</b>	<b>148</b>	<b>129</b>	<b>142</b>	<b>138</b>	<b>155</b>	<b>143</b>	<b>148</b>	<b>104</b>	<b>94</b>	<b>84</b>	<b>78</b>	<b>117</b>	<b>123</b>	<b>100%</b>	<b>155</b>	<b>100%</b>
<b>Uncontrollable Non-Issued Violations</b>																
No Plate	0	0	2	0	0	0	0	0	0	0	1	2	0	7%	1	650%
Out of State Plate	0	0	0	0	0	1	0	0	0	1	0	0	0	3%	0	0%
Glare on Plate	0	0	0	0	0	0	0	0	0	0	0	1	0	1%	0	200%
Illegible Plate	0	0	0	0	0	0	0	0	0	0	0	0	0	0%	1	300%
Plate Obstructed	0	0	1	0	0	0	0	0	0	0	0	1	0	3%	0	100%
Windshield Glare	2	0	0	0	0	0	1	1	1	2	1	0	1	12%	0	250%
Driver Obstructed	2	1	3	3	0	0	2	0	3	1	0	0	1	22%	2	1050%
Car Obstructed	1	1	2	2	2	2	1	1	2	0	4	1	2	28%	2	1150%
No DMV Match Found	1	0	1	0	0	0	0	0	0	0	1	0	0	4%	0	250%
LASD Expired	0	0	0	0	0	0	0	0	0	0	0	0	0	0%	0	250%
LASD Return	0	0	1	0	1	0	1	1	1	1	1	1	1	100%	0	13%
Other	0	1	1	0	0	0	0	0	0	3	0	1	1	9%	0	0%
<b>Total:</b>	<b>6</b>	<b>3</b>	<b>11</b>	<b>5</b>	<b>3</b>	<b>3</b>	<b>5</b>	<b>3</b>	<b>7</b>	<b>8</b>	<b>8</b>	<b>7</b>	<b>6</b>	<b>100%</b>	<b>0</b>	<b>100%</b>
<b>Controllable Non-Issued Violations</b>																
Framing of Plate	0	1	0	0	0	0	0	0	0	0	0	1	0	25%	1	26%
Focus / Clarity of Plate	0	0	1	0	0	0	0	0	0	0	0	0	0	13%	0	13%
Dark Interior	1	0	0	0	0	0	0	0	1	0	0	0	0	25%	0	22%
Framing of Driver	0	0	0	0	0	0	0	0	1	0	0	0	0	13%	0	0%
Focus / Clarity of Driver	0	0	0	0	0	0	0	0	0	0	0	0	0	0%	0	0%
Framing of Car	0	0	0	0	0	1	1	0	0	0	0	0	0	25%	1	39%
Data/Operator Error	0	0	0	0	0	0	0	0	0	0	0	0	0	0%	0	0%
Exposure	0	0	0	0	0	0	0	0	0	0	0	0	0	0%	0	0%
Equipment Malfunction	0	0	0	0	0	0	0	0	0	0	0	0	0	0%	0	0%
ACS Expired	0	0	0	0	0	0	0	0	0	0	0	0	0	0%	0	0%
<b>Total:</b>	<b>1</b>	<b>1</b>	<b>1</b>	<b>0</b>	<b>0</b>	<b>1</b>	<b>1</b>	<b>0</b>	<b>2</b>	<b>0</b>	<b>0</b>	<b>1</b>	<b>1</b>	<b>100%</b>	<b>2</b>	<b>100%</b>
<b>Summary Metrics</b>																
Daily Average Vehicle Passes	277	306	304	274	316	308	283	332	307	292	286	315	Year to Date Monthly Average		2010 Monthly Average	
Average Issued Speed	19	27	23	23	24	22	20	23	20	23	27	23	300	323		
Average Issued Red Seconds	57.6	53.9	70.7	50.0	50.0	65.6	85.8	50.8	99.9	56.9	50.0	50.1	62	67.1		
Citation / Violation Issuance	30%	56%	25%	44%	40%	43%	14%	40%	10%	27%	20%	43%	33%	19%		
Controllable Issuance Rate	75%	83%	80%	100%	100%	75%	50%	100%	33%	100%	100%	86%	82%	19%		

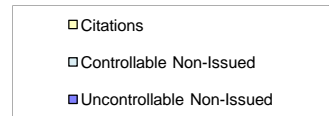
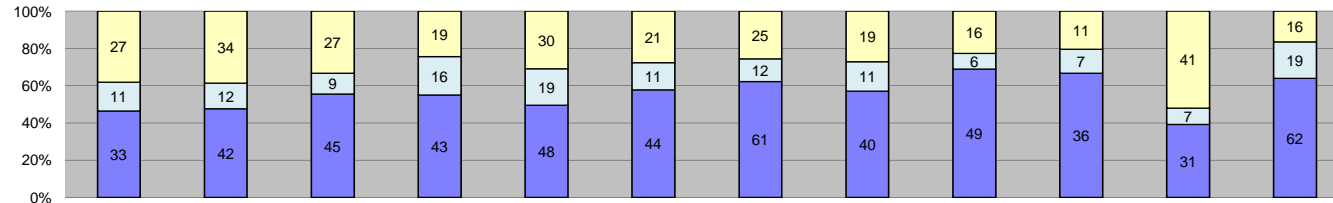


Events	Jan-11	Feb-11	Mar-11	Apr-11	May-11	Jun-11	Jul-11	Aug-11	Sep-11	Oct-11	Nov-11	Dec-11	Year to Date Monthly Average		2010 Monthly Average	
													Quantity	%	Quantity	%
Non-Violations	1,073	1,037	1,030	1,106	1,135	1,086	982	455	400	507	387	749	829	93%	1,183	90%
Violations	66	60	54	95	66	58	67	50	69	58	74	52	64	7%	124	10%
<b>Total:</b>	<b>1,139</b>	<b>1,097</b>	<b>1,084</b>	<b>1,201</b>	<b>1,201</b>	<b>1,144</b>	<b>1,049</b>	<b>505</b>	<b>469</b>	<b>565</b>	<b>461</b>	<b>801</b>	<b>893</b>	<b>100%</b>	<b>1,308</b>	<b>100%</b>
<b>Violations</b>																
Uncontrollable Non-Issued	28	24	29	54	41	31	47	33	50	38	45	36	38	59%	61	49%
Controllable Non-Issued	1	0	0	1	1	0	0	0	0	0	0	0	0	0%	18	14%
Citations	37	36	25	40	24	27	20	17	19	20	29	16	26	40%	45	36%
<b>Total:</b>	<b>66</b>	<b>60</b>	<b>54</b>	<b>95</b>	<b>66</b>	<b>58</b>	<b>67</b>	<b>50</b>	<b>69</b>	<b>58</b>	<b>74</b>	<b>52</b>	<b>64</b>	<b>100%</b>	<b>124</b>	<b>100%</b>
<b>Non-Violations</b>																
Rear Axle Violation	1	2	0	0	0	1	1	0	0	1	0	1	1	0%	0	0%
Emergency Vehicle	48	29	31	24	31	27	36	28	29	32	18	16	29	4%	32	3%
Right Turn	0	0	0	0	0	0	0	0	0	0	0	0	0	0%	0	0%
No Violation Occurred	1,024	1,006	999	1,082	1,104	1,058	945	427	371	474	369	732	799	96%	1,183	97%
<b>Total:</b>	<b>1,073</b>	<b>1,037</b>	<b>1,030</b>	<b>1,106</b>	<b>1,135</b>	<b>1,086</b>	<b>982</b>	<b>455</b>	<b>400</b>	<b>507</b>	<b>387</b>	<b>749</b>	<b>829</b>	<b>100%</b>	<b>1,215</b>	<b>100%</b>
<b>Uncontrollable Non-Issued Violations</b>																
No Plate	3	4	6	10	3	4	6	4	6	6	5	8	5	14%	7	16%
Out of State Plate	0	0	1	2	2	0	2	0	2	0	0	0	1	2%	1	2%
Glare on Plate	0	0	0	1	0	0	0	0	0	0	0	0	0	0%	0	0%
Illegible Plate	0	0	0	1	0	0	0	0	0	0	0	0	0	0%	0	1%
Plate Obstructed	0	1	0	1	1	0	0	0	1	0	1	0	0	1%	1	1%
Windshield Glare	0	0	2	4	6	3	3	3	5	1	0	0	2	6%	3	6%
Driver Obstructed	1	1	0	0	0	1	1	0	1	3	1	0	1	2%	1	2%
Car Obstructed	0	4	1	1	2	2	1	1	1	0	2	0	1	3%	2	5%
No DMV Match Found	11	5	9	15	11	10	5	2	13	10	11	8	9	24%	11	24%
LASD Expired	0	0	0	0	0	0	0	0	0	0	0	1	0	0%	2	5%
LASD Return	0	1	0	19	15	11	27	22	21	18	25	16	15	5833%	17	1864%
Other	13	8	10	0	1	0	2	1	0	0	0	3	3	8%	1	3%
<b>Total:</b>	<b>28</b>	<b>24</b>	<b>29</b>	<b>54</b>	<b>41</b>	<b>31</b>	<b>47</b>	<b>33</b>	<b>50</b>	<b>38</b>	<b>45</b>	<b>36</b>	<b>38</b>	<b>100%</b>	<b>47</b>	<b>100%</b>
<b>Controllable Non-Issued Violations</b>																
Framing of Plate	0	0	0	1	1	0	0	0	0	0	0	0	0	67%	0	9%
Focus / Clarity of Plate	0	0	0	0	0	0	0	0	0	0	0	0	0	0%	0	0%
Dark Interior	0	0	0	0	0	0	0	0	0	0	0	0	0	0%	0	9%
Framing of Driver	0	0	0	0	0	0	0	0	0	0	0	0	0	0%	0	0%
Focus / Clarity of Driver	0	0	0	0	0	0	0	0	0	0	0	0	0	0%	0	0%
Framing of Car	1	0	0	0	0	0	0	0	0	0	0	0	0	33%	0	45%
Data/Operator Error	0	0	0	0	0	0	0	0	0	0	0	0	0	0%	0	9%
Exposure	0	0	0	0	0	0	0	0	0	0	0	0	0	0%	0	9%
Equipment Malfunction	0	0	0	0	0	0	0	0	0	0	0	0	0	0%	0	9%
ACS Expired	0	0	0	0	0	0	0	0	0	0	0	0	0	0%	0	9%
<b>Total:</b>	<b>1</b>	<b>0</b>	<b>0</b>	<b>1</b>	<b>1</b>	<b>0</b>	<b>0</b>	<b>0</b>	<b>0</b>	<b>0</b>	<b>0</b>	<b>0</b>	<b>0</b>	<b>100%</b>	<b>1</b>	<b>100%</b>
<b>Summary Metrics</b>																
Daily Average Vehicle Passes	901	976	920	877	988	949	813	860	910	937	931	883	Year to Date Monthly Average		2010 Monthly Average	
Average Issued Speed	24	26	24	27	29	25	29	28	24	28	33	23	912		919	
Average Issued Red Seconds	31.1	50.2	40.2	52.4	66.1	49.4	60.7	40.8	54.1	57.8	53.6	61.3	51		38.0	
Citation / Violation Issuance	56%	60%	46%	42%	36%	47%	30%	34%	28%	34%	39%	31%	40%		36%	
Controllable Issuance Rate	97%	100%	100%	98%	96%	100%	100%	100%	100%	100%	100%	100%	99%		58%	

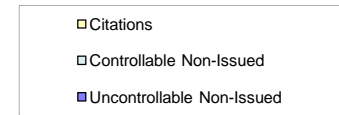
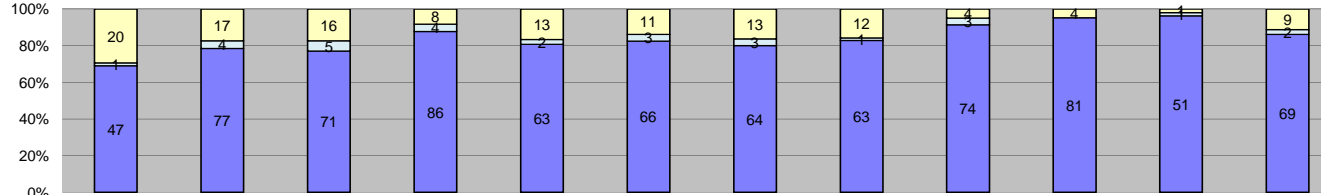




Events	Jan-11	Feb-11	Mar-11	Apr-11	May-11	Jun-11	Jul-11	Aug-11	Sep-11	Oct-11	Nov-11	Dec-11	Year to Date Monthly Average		2010 Monthly Average	
													Quantity	%	Quantity	%
Non-Violations	150	156	175	186	181	167	174	142	135	168	134	189	163	87%	166	87%
Violations	24	19	32	23	29	23	34	11	26	25	17	36	25	13%	25	13%
<b>Total:</b>	<b>174</b>	<b>175</b>	<b>207</b>	<b>209</b>	<b>210</b>	<b>190</b>	<b>208</b>	<b>153</b>	<b>161</b>	<b>193</b>	<b>151</b>	<b>225</b>	<b>188</b>	<b>100%</b>	<b>190</b>	<b>100%</b>
<b>Violations</b>																
Uncontrollable Non-Issued	12	12	21	14	21	17	29	5	19	15	13	29	17	69%	12	50%
Controllable Non-Issued	0	0	2	2	3	1	3	0	1	1	0	2	1	5%	4	14%
Citations	12	7	9	7	5	5	2	6	6	9	4	5	6	26%	9	36%
<b>Total:</b>	<b>24</b>	<b>19</b>	<b>32</b>	<b>23</b>	<b>29</b>	<b>23</b>	<b>34</b>	<b>11</b>	<b>26</b>	<b>25</b>	<b>17</b>	<b>36</b>	<b>25</b>	<b>100%</b>	<b>25</b>	<b>100%</b>
<b>Non-Violations</b>																
Rear Axle Violation	0	0	0	0	0	0	0	0	0	0	0	0	0	0%	0	0%
Emergency Vehicle	4	0	2	1	1	5	4	2	3	1	1	1	2	1%	1	1%
Right Turn	0	0	0	0	0	0	0	0	0	0	0	0	0	0%	0	0%
No Violation Occurred	146	156	173	185	180	162	170	140	132	167	133	188	161	99%	166	99%
<b>Total:</b>	<b>150</b>	<b>156</b>	<b>175</b>	<b>186</b>	<b>181</b>	<b>167</b>	<b>174</b>	<b>142</b>	<b>135</b>	<b>168</b>	<b>134</b>	<b>189</b>	<b>163</b>	<b>100%</b>	<b>167</b>	<b>100%</b>
<b>Uncontrollable Non-Issued Violations</b>																
No Plate	1	1	1	1	1	0	5	0	5	2	1	1	2	9%	2	15%
Out of State Plate	2	0	0	0	0	0	0	0	0	1	0	0	0	1%	0	2%
Glare on Plate	0	0	1	1	0	0	0	0	0	0	0	0	0	1%	0	0%
Illegible Plate	0	1	0	0	1	1	0	0	0	0	1	0	0	2%	1	4%
Plate Obstructed	0	1	0	0	2	0	1	0	0	0	1	1	1	3%	0	3%
Windshield Glare	0	0	1	2	7	1	4	0	3	1	0	2	2	10%	1	6%
Driver Obstructed	1	2	4	3	3	2	0	0	2	1	4	4	2	13%	2	13%
Car Obstructed	2	2	4	2	2	3	4	3	1	1	0	0	2	12%	2	16%
No DMV Match Found	1	1	4	3	0	5	5	0	2	3	0	2	2	13%	3	21%
LASD Expired	0	0	0	0	0	0	0	0	0	0	0	1	0	1%	1	4%
LASD Return	0	0	0	2	5	5	10	2	6	6	6	18	5	400%	2	100%
Other	5	4	6	0	0	0	0	0	0	0	0	0	1	7%	0	3%
<b>Total:</b>	<b>12</b>	<b>12</b>	<b>21</b>	<b>14</b>	<b>21</b>	<b>17</b>	<b>29</b>	<b>5</b>	<b>19</b>	<b>15</b>	<b>13</b>	<b>29</b>	<b>17</b>	<b>100%</b>	<b>13</b>	<b>100%</b>
<b>Controllable Non-Issued Violations</b>																
Framing of Plate	0	0	1	2	2	1	2	0	0	1	0	0	1	60%	1	43%
Focus / Clarity of Plate	0	0	1	0	0	0	0	0	0	0	0	0	0	7%	0	14%
Dark Interior	0	0	0	0	0	0	0	0	0	0	0	1	0	7%	0	5%
Framing of Driver	0	0	0	0	1	0	1	0	0	0	0	1	0	20%	0	14%
Focus / Clarity of Driver	0	0	0	0	0	0	0	0	0	0	0	0	0	0%	0	0%
Framing of Car	0	0	0	0	0	0	0	0	1	0	0	0	0	7%	0	10%
Data/Operator Error	0	0	0	0	0	0	0	0	0	0	0	0	0	0%	0	0%
Exposure	0	0	0	0	0	0	0	0	0	0	0	0	0	0%	0	14%
Equipment Malfunction	0	0	0	0	0	0	0	0	0	0	0	0	0	0%	0	0%
ACS Expired	0	0	0	0	0	0	0	0	0	0	0	0	0	0%	0	0%
<b>Total:</b>	<b>0</b>	<b>0</b>	<b>2</b>	<b>2</b>	<b>3</b>	<b>1</b>	<b>3</b>	<b>0</b>	<b>1</b>	<b>1</b>	<b>0</b>	<b>2</b>	<b>1</b>	<b>100%</b>	<b>2</b>	<b>100%</b>
<b>Summary Metrics</b>																
Daily Average Vehicle Passes	638	648	692	581	756	809	789	811	789	767	659	755	Year to Date Monthly Average		2010 Monthly Average	
Average Issued Speed	18	17	17	18	16	17	18	19	19	18	18	19	725		574	
Average Issued Red Seconds	25.4	5.9	0.3	12.0	0.5	0.6	0.3	0.5	0.9	22.6	0.6	0.9	6		18.1	
Citation / Violation Issuance	50%	37%	28%	30%	17%	22%	6%	55%	23%	36%	24%	14%	28%		36%	
Controllable Issuance Rate	100%	100%	82%	78%	63%	83%	40%	100%	86%	90%	100%	71%	83%		75%	



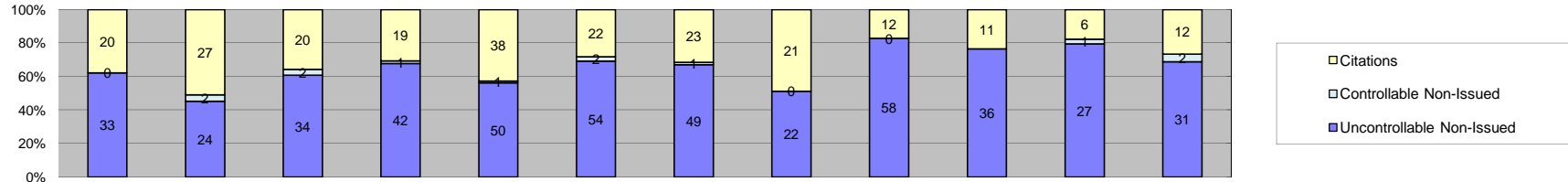
Events	Jan-11												Year to Date Monthly Average		2010 Monthly Average	
	Jan-11	Feb-11	Mar-11	Apr-11	May-11	Jun-11	Jul-11	Aug-11	Sep-11	Oct-11	Nov-11	Dec-11	Quantity	%	Quantity	%
Non-Violations	253	269	311	272	343	304	312	240	209	262	212	322	276	78%	295	75%
Violations	71	88	81	78	97	76	98	70	71	54	79	97	80	22%	99	25%
<b>Total:</b>	<b>324</b>	<b>357</b>	<b>392</b>	<b>350</b>	<b>440</b>	<b>380</b>	<b>410</b>	<b>310</b>	<b>280</b>	<b>316</b>	<b>291</b>	<b>419</b>	<b>356</b>	<b>100%</b>	<b>393</b>	<b>100%</b>
<b>Violations</b>																
Uncontrollable Non-Issued	33	42	45	43	48	44	61	40	49	36	31	62	45	56%	46	46%
Controllable Non-Issued	11	12	9	16	19	11	12	11	6	7	7	19	12	15%	17	17%
Citations	27	34	27	19	30	21	25	19	16	11	41	16	24	30%	36	36%
<b>Total:</b>	<b>71</b>	<b>88</b>	<b>81</b>	<b>78</b>	<b>97</b>	<b>76</b>	<b>98</b>	<b>70</b>	<b>71</b>	<b>54</b>	<b>79</b>	<b>97</b>	<b>80</b>	<b>100%</b>	<b>99</b>	<b>100%</b>
<b>Non-Violations</b>																
Rear Axle Violation	0	2	2	0	1	0	1	0	0	0	3	3	1	0%	0	0%
Emergency Vehicle	13	9	19	22	9	15	18	10	9	10	6	13	13	5%	13	4%
Right Turn	0	0	0	0	0	0	0	0	0	0	0	0	0	0%	0	0%
No Violation Occurred	240	258	290	250	333	289	293	230	200	252	203	306	262	95%	294	96%
<b>Total:</b>	<b>253</b>	<b>269</b>	<b>311</b>	<b>272</b>	<b>343</b>	<b>304</b>	<b>312</b>	<b>240</b>	<b>209</b>	<b>262</b>	<b>212</b>	<b>322</b>	<b>276</b>	<b>100%</b>	<b>308</b>	<b>100%</b>
<b>Uncontrollable Non-Issued Violations</b>																
No Plate	10	8	7	11	5	11	12	5	9	6	6	15	9	20%	10	26%
Out of State Plate	0	2	4	0	2	1	2	1	1	0	1	0	1	3%	2	5%
Glare on Plate	1	1	2	1	3	1	2	2	0	0	0	0	1	2%	1	1%
Illegible Plate	0	1	0	0	2	0	0	0	1	0	0	1	0	1%	0	0%
Plate Obstructed	1	0	0	0	1	0	0	1	1	2	0	2	1	1%	1	2%
Windshield Glare	1	1	1	5	4	3	5	2	1	0	0	0	2	4%	1	3%
Driver Obstructed	4	8	6	4	2	1	3	3	2	4	2	2	3	8%	5	13%
Car Obstructed	4	3	6	3	6	7	8	8	3	3	2	2	5	10%	4	10%
No DMV Match Found	3	7	5	3	8	8	8	1	9	9	8	7	6	14%	6	16%
LASD Expired	0	0	0	0	0	1	0	0	0	0	0	0	0	0%	3	8%
LASD Return	1	1	2	16	15	11	21	17	22	12	12	33	14	116%	6	56%
Other	8	10	12	0	0	0	0	0	0	0	0	0	3	6%	1	1%
<b>Total:</b>	<b>33</b>	<b>42</b>	<b>45</b>	<b>43</b>	<b>48</b>	<b>44</b>	<b>61</b>	<b>40</b>	<b>49</b>	<b>36</b>	<b>31</b>	<b>62</b>	<b>45</b>	<b>100%</b>	<b>39</b>	<b>100%</b>
<b>Controllable Non-Issued Violations</b>																
Framing of Plate	5	3	3	5	4	4	3	0	3	1	5	13	4	35%	3	25%
Focus / Clarity of Plate	1	0	0	1	0	0	0	0	1	0	0	0	0	2%	0	2%
Dark Interior	0	0	0	0	0	0	1	0	0	0	0	0	0	1%	0	1%
Framing of Driver	4	9	6	10	15	7	8	9	2	6	2	5	7	59%	7	63%
Focus / Clarity of Driver	0	0	0	0	0	0	0	0	0	0	0	0	0	0%	0	2%
Framing of Car	1	0	0	0	0	0	0	1	0	0	0	1	0	2%	1	7%
Data/Operator Error	0	0	0	0	0	0	0	0	0	0	0	0	0	0%	0	0%
Exposure	0	0	0	0	0	0	0	0	0	0	0	0	0	0%	0	0%
Equipment Malfunction	0	0	0	0	0	0	0	0	0	0	0	0	0	0%	0	0%
ACS Expired	0	0	0	0	0	0	0	1	0	0	0	0	0	1%	0	1%
<b>Total:</b>	<b>11</b>	<b>12</b>	<b>9</b>	<b>16</b>	<b>19</b>	<b>11</b>	<b>12</b>	<b>11</b>	<b>6</b>	<b>7</b>	<b>7</b>	<b>19</b>	<b>12</b>	<b>100%</b>	<b>11</b>	<b>100%</b>
<b>Summary Metrics</b>																
Daily Average Vehicle Passes	1,314	1,256	1,337	1,263	1,422	1,413	1,050	1,443	1,327	1,327	1,358	1,418	Year to Date Monthly Average		2010 Monthly Average	
Average Issued Speed	17	18	17	17	17	19	17	18	18	19	18	18	18		18	
Average Issued Red Seconds	22.1	28.6	29.5	53.8	41.6	37.8	43.9	32.7	40.7	28.0	11.4	8.6	32		26.2	
Citation / Violation Issuance	38%	39%	33%	24%	31%	28%	26%	27%	23%	20%	52%	16%	30%		36%	
Controllable Issuance Rate	71%	74%	75%	54%	61%	66%	68%	63%	73%	61%	85%	46%	66%		60%	



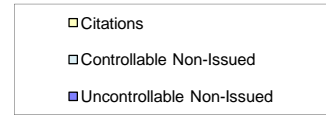
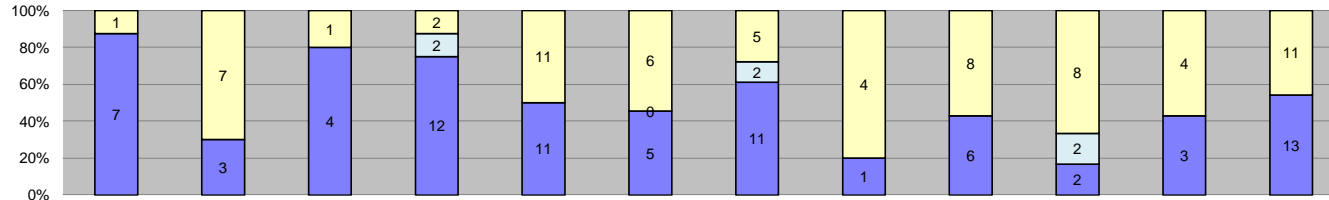
Events	Jan-11	Feb-11	Mar-11	Apr-11	May-11	Jun-11	Jul-11	Aug-11	Sep-11	Oct-11	Nov-11	Dec-11	Year to Date Monthly Average		2010 Monthly Average	
													Quantity	%	Quantity	%
Non-Violations	318	736	627	683	598	592	663	617	615	708	551	946	638	89%	0	0
Violations	68	98	92	98	78	80	80	76	81	85	53	80	81	11%	0	0
<b>Total:</b>	<b>386</b>	<b>834</b>	<b>719</b>	<b>781</b>	<b>676</b>	<b>672</b>	<b>743</b>	<b>693</b>	<b>696</b>	<b>793</b>	<b>604</b>	<b>1,026</b>	<b>719</b>	<b>100%</b>	<b>0</b>	<b>100%</b>
<b>Violations</b>																
Uncontrollable Non-Issued	47	77	71	86	63	66	64	63	74	81	51	69	68	84%	0	0
Controllable Non-Issued	1	4	5	4	2	3	3	1	3	0	1	2	2	3%	0	0
Citations	20	17	16	8	13	11	13	12	4	4	1	9	11	13%	0	0
<b>Total:</b>	<b>68</b>	<b>98</b>	<b>92</b>	<b>98</b>	<b>78</b>	<b>80</b>	<b>80</b>	<b>76</b>	<b>81</b>	<b>85</b>	<b>53</b>	<b>80</b>	<b>81</b>	<b>100%</b>	<b>0</b>	<b>100%</b>
<b>Non-Violations</b>																
Rear Axle Violation	0	0	0	0	0	0	0	0	0	0	0	0	0	0%	0	0
Emergency Vehicle	12	6	2	7	3	7	5	2	3	2	1	4	5	1%	0	0
Right Turn	0	0	0	0	0	0	0	0	0	0	0	0	0	0%	0	0
No Violation Occurred	306	730	625	676	595	585	658	615	612	706	550	942	633	99%	0	0
<b>Total:</b>	<b>318</b>	<b>736</b>	<b>627</b>	<b>683</b>	<b>598</b>	<b>592</b>	<b>663</b>	<b>617</b>	<b>615</b>	<b>708</b>	<b>551</b>	<b>946</b>	<b>638</b>	<b>100%</b>	<b>0</b>	<b>100%</b>
<b>Uncontrollable Non-Issued Violations</b>																
No Plate	1	5	2	3	1	4	5	3	3	4	1	3	3	4%	0	0%
Out of State Plate	0	0	0	1	0	1	0	1	1	0	0	0	0	0%	0	0%
Glare on Plate	0	1	1	0	0	0	1	0	0	0	0	0	0	0%	0	0%
Illegible Plate	2	2	0	2	0	2	1	1	0	0	0	1	1	1%	0	0%
Plate Obstructed	0	1	1	1	0	0	1	1	0	0	0	1	1	1%	0	0%
Windshield Glare	0	3	9	8	8	4	2	2	6	7	0	2	4	6%	0	0%
Driver Obstructed	2	2	11	7	5	1	4	8	3	9	4	7	5	8%	0	0%
Car Obstructed	19	51	33	41	34	30	33	28	43	46	32	35	35	52%	0	0%
No DMV Match Found	9	4	4	4	5	9	5	4	10	2	3	1	5	7%	0	0%
LASD Expired	0	0	0	0	0	0	0	0	0	0	0	0	0	0%	0	0%
LASD Return	4	1	0	19	10	15	12	15	8	13	11	15	10	424%	0	0
Other	10	7	10	0	0	0	0	0	0	0	0	4	3	4%	0	0%
<b>Total:</b>	<b>47</b>	<b>77</b>	<b>71</b>	<b>86</b>	<b>63</b>	<b>66</b>	<b>64</b>	<b>63</b>	<b>74</b>	<b>81</b>	<b>51</b>	<b>69</b>	<b>68</b>	<b>100%</b>	<b>0</b>	<b>100%</b>
<b>Controllable Non-Issued Violations</b>																
Framing of Plate	1	1	0	2	1	3	2	0	2	0	1	2	1	52%	0	0
Focus / Clarity of Plate	0	0	0	1	0	0	0	0	1	0	0	0	0	7%	0	0
Dark Interior	0	3	1	1	1	0	1	1	0	0	0	0	1	28%	0	0
Framing of Driver	0	0	0	0	0	0	0	0	0	0	0	0	0	0%	0	0
Focus / Clarity of Driver	0	0	0	0	0	0	0	0	0	0	0	0	0	0%	0	0
Framing of Car	0	0	4	0	0	0	0	0	0	0	0	0	0	14%	0	0
Data/Operator Error	0	0	0	0	0	0	0	0	0	0	0	0	0	0%	0	0
Exposure	0	0	0	0	0	0	0	0	0	0	0	0	0	0%	0	0
Equipment Malfunction	0	0	0	0	0	0	0	0	0	0	0	0	0	0%	0	0
ACS Expired	0	0	0	0	0	0	0	0	0	0	0	0	0	0%	0	0
<b>Total:</b>	<b>1</b>	<b>4</b>	<b>5</b>	<b>4</b>	<b>2</b>	<b>3</b>	<b>3</b>	<b>1</b>	<b>3</b>	<b>0</b>	<b>1</b>	<b>2</b>	<b>2</b>	<b>100%</b>	<b>0</b>	<b>100%</b>
<b>Summary Metrics</b>																
Daily Average Vehicle Passes	667	1,138	1,287	1,109	1,263	1,210	1,083	1,223	1,175	1,171	689	1,099	Year to Date Monthly Average		2010 Monthly Average	
Average Issued Speed	17	16	16	19	20	17	18	19	17	18	21	18	1,093		0	
Average Issued Red Seconds	20.7	11.3	6.9	21.9	16.5	19.9	17.5	14.8	9.8	16.4	19.3	12.1	16		0.0	
Citation / Violation Issuance	29%	17%	17%	8%	17%	14%	16%	16%	5%	5%	2%	11%	13%		0%	
Controllable Issuance Rate	95%	81%	76%	67%	87%	79%	81%	92%	57%	100%	50%	82%	79%		0%	



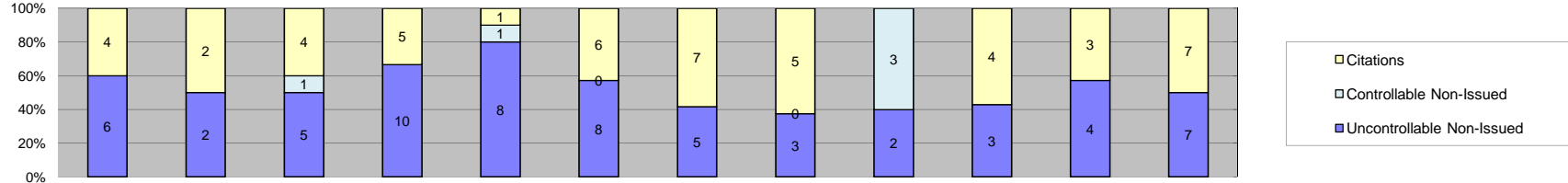
## Los Angeles County MTA Gold Line Approach Summary Report Location 4085: WB to SB 3rd @ Rowan



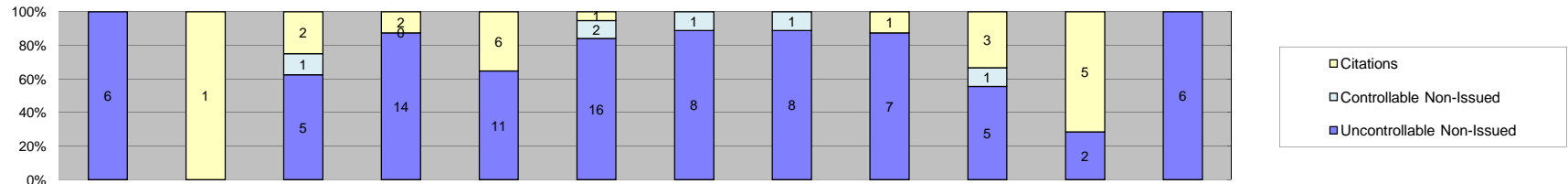
Events	Jan-11	Feb-11	Mar-11	Apr-11	May-11	Jun-11	Jul-11	Aug-11	Sep-11	Oct-11	Nov-11	Dec-11	Year to Date Monthly Average		2010 Monthly Average	
	Quantity	Quantity	Quantity	Quantity	Quantity	Quantity	Quantity	Quantity	Quantity	Quantity	Quantity	Quantity	Quantity	%	Quantity	%
<b>Non-Violations</b>	172	59	90	55	82	93	100	50	33	37	16	28	68	54%	0	0
<b>Violations</b>	53	53	56	62	89	78	73	43	70	47	34	45	45	46%	0	0
<b>Total:</b>	<b>225</b>	<b>112</b>	<b>146</b>	<b>117</b>	<b>171</b>	<b>171</b>	<b>173</b>	<b>93</b>	<b>103</b>	<b>84</b>	<b>50</b>	<b>73</b>	<b>127</b>	<b>100%</b>	<b>0</b>	<b>100%</b>
<b>Violations</b>																
Uncontrollable Non-Issued	33	24	34	42	50	54	49	22	58	36	27	31	38	65%	0	0
Controllable Non-Issued	0	2	2	1	1	2	1	0	0	0	1	2	1	2%	0	0
Citations	20	27	20	19	38	22	23	21	12	11	6	12	19	33%	0	0
<b>Total:</b>	<b>53</b>	<b>53</b>	<b>56</b>	<b>62</b>	<b>89</b>	<b>78</b>	<b>73</b>	<b>43</b>	<b>70</b>	<b>47</b>	<b>34</b>	<b>45</b>	<b>59</b>	<b>100%</b>	<b>0</b>	<b>100%</b>
<b>Non-Violations</b>																
Rear Axle Violation	0	0	0	0	0	0	0	0	0	0	0	0	0	0%	0	0
Emergency Vehicle	5	15	26	15	17	23	22	20	8	18	5	13	16	23%	0	0
Right Turn	0	0	0	0	0	0	0	0	0	0	0	0	0	0%	0	0
No Violation Occurred	167	44	64	40	65	70	78	30	25	19	11	15	52	77%	0	0
<b>Total:</b>	<b>172</b>	<b>59</b>	<b>90</b>	<b>55</b>	<b>82</b>	<b>93</b>	<b>100</b>	<b>50</b>	<b>33</b>	<b>37</b>	<b>16</b>	<b>28</b>	<b>68</b>	<b>100%</b>	<b>0</b>	<b>100%</b>
<b>Uncontrollable Non-Issued Violations</b>																
No Plate	8	7	4	4	7	9	7	3	8	8	2	5	6	16%	0	0
Out of State Plate	0	0	2	0	1	0	0	0	1	3	0	1	1	2%	0	0
Glare on Plate	0	0	0	2	0	0	0	0	0	0	0	0	0	0%	0	0
Illegible Plate	0	3	1	1	1	0	0	0	0	0	0	1	1	2%	0	0
Plate Obstructed	0	0	2	2	0	1	0	0	0	0	1	0	1	1%	0	0
Windshield Glare	0	1	3	4	5	6	3	1	2	0	1	0	2	6%	0	0
Driver Obstructed	4	2	5	5	7	5	7	0	6	8	4	2	5	12%	0	0
Car Obstructed	9	0	1	0	1	1	2	0	0	0	0	0	1	3%	0	0
No DMV Match Found	5	9	8	10	14	15	14	4	22	3	10	5	10	26%	0	0
LASD Expired	0	0	0	0	0	1	0	0	0	0	0	1	0	0%	0	0
LASD Return	1	2	0	14	14	16	16	14	19	14	9	16	11	1125%	0	0
Other	6	0	8	0	0	0	0	0	0	0	0	0	1	3%	0	0
<b>Total:</b>	<b>33</b>	<b>24</b>	<b>34</b>	<b>42</b>	<b>50</b>	<b>54</b>	<b>49</b>	<b>22</b>	<b>58</b>	<b>36</b>	<b>27</b>	<b>31</b>	<b>38</b>	<b>100%</b>	<b>0</b>	<b>100%</b>
<b>Controllable Non-Issued Violations</b>																
Framing of Plate	0	1	0	1	0	2	1	0	0	0	0	0	0	42%	0	0
Focus / Clarity of Plate	0	0	0	0	1	0	0	0	0	0	0	0	0	8%	0	0
Dark Interior	0	1	1	0	0	0	0	0	0	0	1	2	0	42%	0	0
Framing of Driver	0	0	0	0	0	0	0	0	0	0	0	0	0	0%	0	0
Focus / Clarity of Driver	0	0	0	0	0	0	0	0	0	0	0	0	0	0%	0	0
Framing of Car	0	0	1	0	0	0	0	0	0	0	0	0	0	8%	0	0
Data/Operator Error	0	0	0	0	0	0	0	0	0	0	0	0	0	0%	0	0
Exposure	0	0	0	0	0	0	0	0	0	0	0	0	0	0%	0	0
Equipment Malfunction	0	0	0	0	0	0	0	0	0	0	0	0	0	0%	0	0
ACS Expired	0	0	0	0	0	0	0	0	0	0	0	0	0	0%	0	0
<b>Total:</b>	<b>0</b>	<b>2</b>	<b>2</b>	<b>1</b>	<b>1</b>	<b>2</b>	<b>1</b>	<b>0</b>	<b>0</b>	<b>0</b>	<b>1</b>	<b>2</b>	<b>1</b>	<b>100%</b>	<b>0</b>	<b>100%</b>
<b>Summary Metrics</b>																
Daily Average Vehicle Passes	690	1,511	1,742	1,549	1,874	1,969	1,693	1,890	1,897	1,648	713	1,665	Year to Date Monthly Average		2010 Monthly Average	
Average Issued Speed	16	15	16	16	15	14	15	16	16	16	15	17	1,570		0	
Average Issued Red Seconds	30.1	39.8	31.5	54.5	44.7	38.9	48.9	41.6	44.4	54.1	52.2	44.5	44		0.0	
Citation / Violation Issuance	38%	51%	36%	31%	43%	28%	32%	49%	17%	23%	18%	27%	33%		0%	
Controllable Issuance Rate	100%	93%	91%	95%	97%	92%	96%	100%	100%	100%	86%	86%	95%		0%	



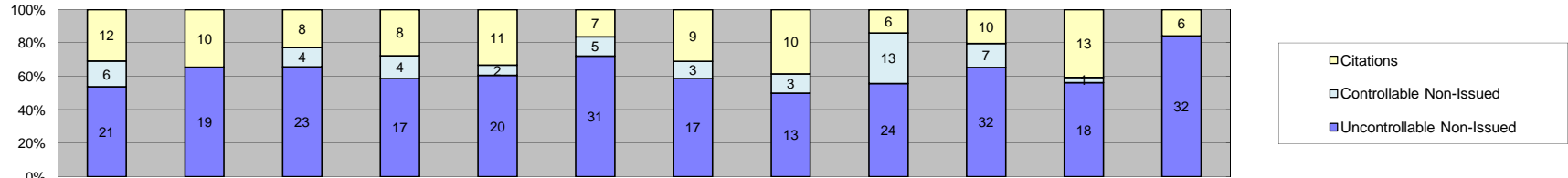
Events	Jan-11	Feb-11	Mar-11	Apr-11	May-11	Jun-11	Jul-11	Aug-11	Sep-11	Oct-11	Nov-11	Dec-11	Year to Date Monthly Average		2010 Monthly Average	
	Quantity	Quantity	Quantity	Quantity	Quantity	Quantity	Quantity	Quantity	Quantity	Quantity	Quantity	Quantity	Quantity	%	%	%
<b>Non-Violations</b>	426	254	330	306	307	311	263	139	114	119	136	166	239	95%	604	97%
<b>Violations</b>	8	10	5	16	22	11	18	5	14	12	7	24	13	5%	18	3%
<b>Total:</b>	<b>434</b>	<b>264</b>	<b>335</b>	<b>322</b>	<b>329</b>	<b>322</b>	<b>281</b>	<b>144</b>	<b>128</b>	<b>131</b>	<b>143</b>	<b>190</b>	<b>252</b>	<b>100%</b>	<b>623</b>	<b>100%</b>
<b>Violations</b>																
Uncontrollable Non-Issued	7	3	4	12	11	5	11	1	6	2	3	13	7	51%	13	72%
Controllable Non-Issued	0	0	0	2	0	0	2	0	0	2	0	0	1	4%	0	2%
Citations	1	7	1	2	11	6	5	4	8	8	4	11	6	45%	5	25%
<b>Total:</b>	<b>8</b>	<b>10</b>	<b>5</b>	<b>16</b>	<b>22</b>	<b>11</b>	<b>18</b>	<b>5</b>	<b>14</b>	<b>12</b>	<b>7</b>	<b>24</b>	<b>13</b>	<b>100%</b>	<b>18</b>	<b>100%</b>
<b>Non-Violations</b>																
Rear Axle Violation	0	0	0	0	0	0	0	0	0	0	0	0	0	0%	0	0%
Emergency Vehicle	0	2	2	1	0	4	2	1	1	1	2	2	2	1%	1	0%
Right Turn	0	0	0	0	0	0	0	0	0	0	0	0	0	0%	0	0%
No Violation Occurred	426	252	328	305	307	307	261	138	113	118	134	164	238	99%	604	100%
<b>Total:</b>	<b>426</b>	<b>254</b>	<b>330</b>	<b>306</b>	<b>307</b>	<b>311</b>	<b>263</b>	<b>139</b>	<b>114</b>	<b>119</b>	<b>136</b>	<b>166</b>	<b>239</b>	<b>100%</b>	<b>605</b>	<b>100%</b>
<b>Uncontrollable Non-Issued Violations</b>																
No Plate	1	0	1	0	0	0	2	0	0	1	2	0	1	9%	1	200%
Out of State Plate	0	0	0	0	0	0	1	0	1	0	0	0	0	3%	0	50%
Glare on Plate	0	0	0	0	0	0	0	0	0	0	0	0	0	0%	0	17%
Illegible Plate	0	0	0	0	0	0	0	0	0	0	0	0	0	0%	0	50%
Plate Obstructed	0	0	1	0	0	0	0	0	1	0	0	0	0	3%	0	17%
Windshield Glare	0	0	0	0	1	0	1	0	0	0	0	1	0	4%	1	100%
Driver Obstructed	1	0	1	0	1	0	0	0	0	0	0	0	0	4%	0	50%
Car Obstructed	3	1	0	9	7	2	5	1	1	1	1	3	3	44%	7	1383%
No DMV Match Found	2	2	1	3	2	2	2	0	3	2	0	7	2	31%	3	517%
LASD Expired	0	0	0	0	0	0	0	0	0	0	0	0	0	0%	0	67%
LASD Return	0	0	0	0	0	1	0	0	0	0	0	1	0	33%	0	67%
Other	0	0	0	0	0	0	0	0	0	0	0	1	0	1%	0	0%
<b>Total:</b>	<b>7</b>	<b>3</b>	<b>4</b>	<b>12</b>	<b>11</b>	<b>5</b>	<b>11</b>	<b>1</b>	<b>6</b>	<b>2</b>	<b>3</b>	<b>13</b>	<b>7</b>	<b>100%</b>	<b>1</b>	<b>100%</b>
<b>Controllable Non-Issued Violations</b>																
Framing of Plate	0	0	0	1	0	0	2	0	0	1	0	0	0	67%	0	67%
Focus / Clarity of Plate	0	0	0	0	0	0	0	0	0	0	0	0	0	0%	0	0%
Dark Interior	0	0	0	0	0	0	0	0	0	0	0	0	0	0%	0	0%
Framing of Driver	0	0	0	1	0	0	0	0	0	0	0	0	0	17%	0	0%
Focus / Clarity of Driver	0	0	0	0	0	0	0	0	0	0	0	0	0	0%	0	0%
Framing of Car	0	0	0	0	0	0	0	0	0	0	0	0	0	0%	0	33%
Data/Operator Error	0	0	0	0	0	0	0	0	0	0	0	0	0	0%	0	0%
Exposure	0	0	0	0	0	0	0	0	0	1	0	0	0	17%	0	0%
Equipment Malfunction	0	0	0	0	0	0	0	0	0	0	0	0	0	0%	0	0%
ACS Expired	0	0	0	0	0	0	0	0	0	0	0	0	0	0%	0	0%
<b>Total:</b>	<b>0</b>	<b>0</b>	<b>0</b>	<b>2</b>	<b>0</b>	<b>0</b>	<b>2</b>	<b>0</b>	<b>0</b>	<b>2</b>	<b>0</b>	<b>0</b>	<b>1</b>	<b>100%</b>	<b>0</b>	<b>100%</b>
<b>Summary Metrics</b>																
Daily Average Vehicle Passes	801	886	911	928	1,029	932	910	982	901	942	828	962	Year to Date Monthly Average		2010 Monthly Average	
Average Issued Speed	24	17	16	16	18	18	21	24	20	19	21	19	917		920	
Average Issued Red Seconds	0.1	26.9	0.1	35.0	40.8	46.6	20.8	31.4	34.8	25.7	34.6	36.6	28		30.7	
Citation / Violation Issuance	13%	70%	20%	13%	50%	55%	28%	80%	57%	67%	57%	46%	46%		25%	
Controllable Issuance Rate	100%	100%	100%	50%	100%	100%	71%	100%	100%	80%	100%	100%	92%		26%	



Events	2011												Year to Date Monthly Average		2010 Monthly Average	
	Jan-11	Feb-11	Mar-11	Apr-11	May-11	Jun-11	Jul-11	Aug-11	Sep-11	Oct-11	Nov-11	Dec-11	Quantity	%	Quantity	%
<b>Non-Violations</b>	223	251	297	293	313	263	180	89	52	63	74	120	185	95%	252	96%
<b>Violations</b>	10	4	10	15	10	14	12	8	5	7	7	14	10	5%	11	4%
<b>Total:</b>	<b>233</b>	<b>255</b>	<b>307</b>	<b>308</b>	<b>323</b>	<b>277</b>	<b>192</b>	<b>97</b>	<b>57</b>	<b>70</b>	<b>81</b>	<b>134</b>	<b>195</b>	<b>100%</b>	<b>263</b>	<b>100%</b>
<b>Violations</b>																
Uncontrollable Non-Issued	6	2	5	10	8	8	5	3	2	3	4	7	5	54%	6	59%
Controllable Non-Issued	0	0	1	0	1	0	0	0	3	0	0	0	0	4%	1	5%
Citations	4	2	4	5	1	6	7	5	0	4	3	7	4	41%	4	37%
<b>Total:</b>	<b>10</b>	<b>4</b>	<b>10</b>	<b>15</b>	<b>10</b>	<b>14</b>	<b>12</b>	<b>8</b>	<b>5</b>	<b>7</b>	<b>7</b>	<b>14</b>	<b>10</b>	<b>100%</b>	<b>11</b>	<b>100%</b>
<b>Non-Violations</b>																
Rear Axle Violation	0	0	0	0	0	0	0	0	0	0	0	0	0	0%	0	0%
Emergency Vehicle	0	1	1	1	1	2	1	5	1	1	0	3	1	1%	1	0%
Right Turn	0	0	0	0	0	0	0	0	0	0	0	0	0	0%	0	0%
No Violation Occurred	223	250	296	292	312	261	179	84	51	62	74	117	183	99%	252	100%
<b>Total:</b>	<b>223</b>	<b>251</b>	<b>297</b>	<b>293</b>	<b>313</b>	<b>263</b>	<b>180</b>	<b>89</b>	<b>52</b>	<b>63</b>	<b>74</b>	<b>120</b>	<b>185</b>	<b>100%</b>	<b>253</b>	<b>100%</b>
<b>Uncontrollable Non-Issued Violations</b>																
No Plate	0	0	3	2	1	3	0	1	1	0	0	0	1	17%	0	7%
Out of State Plate	0	0	0	0	0	0	1	0	0	0	0	0	0	2%	0	4%
Glare on Plate	0	0	0	0	0	0	0	0	0	0	0	0	0	0%	0	0%
Illegible Plate	0	0	0	0	0	0	0	0	0	0	0	0	0	0%	0	1%
Plate Obstructed	0	0	0	0	0	0	0	0	0	0	0	1	0	2%	0	0%
Windshield Glare	0	0	0	0	2	0	0	0	0	1	0	0	0	5%	0	1%
Driver Obstructed	0	0	0	0	1	0	1	1	1	0	0	1	0	8%	1	9%
Car Obstructed	2	2	2	2	1	1	2	0	0	0	0	0	1	19%	2	36%
No DMV Match Found	4	0	0	6	3	0	1	0	0	3	1	4	2	33%	2	36%
LASD Expired	0	0	0	0	0	0	0	0	0	0	0	1	0	2%	0	4%
LASD Return	0	0	0	0	0	4	0	1	0	1	0	2	1	160%	0	0%
Other	0	0	0	0	0	0	0	0	0	0	0	0	0	0%	0	0%
<b>Total:</b>	<b>6</b>	<b>2</b>	<b>5</b>	<b>10</b>	<b>8</b>	<b>8</b>	<b>5</b>	<b>3</b>	<b>2</b>	<b>3</b>	<b>4</b>	<b>7</b>	<b>5</b>	<b>100%</b>	<b>6</b>	<b>100%</b>
<b>Controllable Non-Issued Violations</b>																
Framing of Plate	0	0	0	0	1	0	0	0	0	0	0	0	0	20%	0	67%
Focus / Clarity of Plate	0	0	0	0	0	0	0	0	0	0	0	0	0	0%	0	0%
Dark Interior	0	0	0	0	0	0	0	0	0	0	0	0	0	0%	0	17%
Framing of Driver	0	0	1	0	0	0	0	0	0	0	0	0	0	20%	0	0%
Focus / Clarity of Driver	0	0	0	0	0	0	0	0	0	0	0	0	0	0%	0	0%
Framing of Car	0	0	0	0	0	0	0	0	0	0	0	0	0	0%	0	0%
Data/Operator Error	0	0	0	0	0	0	0	0	0	0	0	0	0	0%	0	17%
Exposure	0	0	0	0	0	0	0	0	0	0	0	0	0	0%	0	0%
Equipment Malfunction	0	0	0	0	0	0	0	0	3	0	0	0	0	60%	0	0%
ACS Expired	0	0	0	0	0	0	0	0	0	0	0	0	0	0%	0	0%
<b>Total:</b>	<b>0</b>	<b>0</b>	<b>1</b>	<b>0</b>	<b>1</b>	<b>0</b>	<b>0</b>	<b>0</b>	<b>3</b>	<b>0</b>	<b>0</b>	<b>0</b>	<b>0</b>	<b>100%</b>	<b>1</b>	<b>100%</b>
<b>Summary Metrics</b>													<b>Year to Date Monthly Average</b>		<b>2010 Monthly Average</b>	
Daily Average Vehicle Passes	572	550	616	653	579	589	563	637	621	676	591	605	604		565	
Average Issued Speed	18	16	20	19	15	18	17	20	0	19	20	21	19		18	
Average Issued Red Seconds	48.3	1.0	0.9	20.2	0.7	0.4	59.0	62.9	0	0.5	34.1	24.7	23		23.0	
Citation / Violation Issuance	40%	50%	40%	33%	10%	43%	58%	63%	0%	57%	43%	50%	41%		37%	
Controllable Issuance Rate	100%	100%	80%	100%	50%	100%	100%	100%	0%	100%	100%	100%	86%		77%	

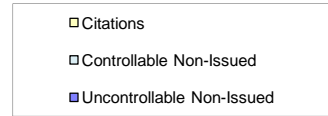
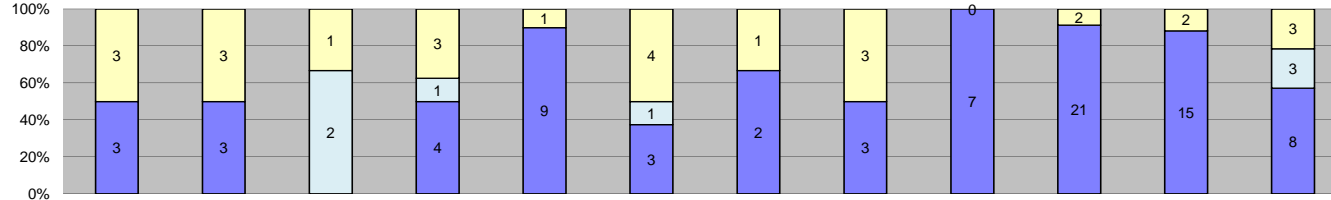


Events	Jan-11	Feb-11	Mar-11	Apr-11	May-11	Jun-11	Jul-11	Aug-11	Sep-11	Oct-11	Nov-11	Dec-11	Year to Date Monthly Average		2010 Monthly Average	
													Quantity	%	Quantity	%
Non-Violations	485	485	504	478	497	501	414	406	394	364	318	374	435	98%	560	97%
Violations	6	1	8	16	17	19	9	9	8	9	7	6	10	2%	17	3%
<b>Total:</b>	<b>491</b>	<b>486</b>	<b>512</b>	<b>494</b>	<b>514</b>	<b>520</b>	<b>423</b>	<b>415</b>	<b>402</b>	<b>373</b>	<b>325</b>	<b>380</b>	<b>445</b>	<b>100%</b>	<b>577</b>	<b>100%</b>
<b>Violations</b>																
Uncontrollable Non-Issued	6	0	5	14	11	16	8	8	7	5	2	6	7	77%	13	78%
Controllable Non-Issued	0	0	1	0	0	2	1	1	0	1	0	0	1	5%	2	9%
Citations	0	1	2	2	6	1	0	0	1	3	5	0	2	18%	2	13%
<b>Total:</b>	<b>6</b>	<b>1</b>	<b>8</b>	<b>16</b>	<b>17</b>	<b>19</b>	<b>9</b>	<b>9</b>	<b>8</b>	<b>9</b>	<b>7</b>	<b>6</b>	<b>10</b>	<b>100%</b>	<b>17</b>	<b>100%</b>
<b>Non-Violations</b>																
Rear Axle Violation	0	0	0	0	0	0	0	1	0	0	0	0	0	0%	0	0%
Emergency Vehicle	0	1	1	2	3	8	2	0	5	0	2	0	2	0%	2	0%
Right Turn	0	0	0	0	0	0	0	0	0	0	0	0	0	0%	0	0%
No Violation Occurred	485	484	503	476	494	493	412	405	389	364	316	374	433	100%	560	100%
<b>Total:</b>	<b>485</b>	<b>485</b>	<b>504</b>	<b>478</b>	<b>497</b>	<b>501</b>	<b>414</b>	<b>406</b>	<b>394</b>	<b>364</b>	<b>318</b>	<b>374</b>	<b>435</b>	<b>100%</b>	<b>562</b>	<b>100%</b>
<b>Uncontrollable Non-Issued Violations</b>																
No Plate	2	0	0	0	0	3	1	0	1	0	1	0	1	8%	1	7%
Out of State Plate	0	0	0	0	0	0	0	0	0	0	0	0	0	0%	0	0%
Glare on Plate	0	0	0	0	0	0	0	0	0	0	0	0	0	0%	0	0%
Illegible Plate	0	0	0	0	0	0	0	0	0	0	0	0	0	0%	0	1%
Plate Obstructed	0	0	0	0	0	0	0	0	0	0	0	0	0	0%	0	0%
Windshield Glare	0	0	0	0	0	0	0	0	0	0	0	0	0	0%	0	1%
Driver Obstructed	0	0	0	0	0	0	1	0	0	1	0	0	0	2%	0	2%
Car Obstructed	4	8	4	13	10	12	5	8	6	4	0	4	7	81%	10	87%
No DMV Match Found	0	0	0	0	1	0	0	0	0	0	1	0	0	2%	0	1%
LASD Expired	0	0	0	0	0	0	0	0	0	0	0	0	0	0%	0	0%
LASD Return	0	0	1	1	0	1	1	0	0	0	0	1	0	83%	0	0%
Other	0	0	0	0	0	0	0	0	0	0	0	1	0	1%	0	0%
<b>Total:</b>	<b>6</b>	<b>0</b>	<b>5</b>	<b>14</b>	<b>11</b>	<b>16</b>	<b>8</b>	<b>8</b>	<b>7</b>	<b>5</b>	<b>2</b>	<b>6</b>	<b>8</b>	<b>100%</b>	<b>12</b>	<b>100%</b>
<b>Controllable Non-Issued Violations</b>																
Framing of Plate	0	0	0	0	0	1	1	0	0	0	0	0	0	33%	0	16%
Focus / Clarity of Plate	0	0	0	0	0	0	0	0	0	0	0	0	0	0%	0	0%
Dark Interior	0	0	0	0	0	0	0	0	0	0	0	0	0	0%	0	0%
Framing of Driver	0	0	0	0	0	0	0	1	0	1	0	0	0	33%	0	11%
Focus / Clarity of Driver	0	0	0	0	0	0	0	0	0	0	0	0	0	0%	0	0%
Framing of Car	0	0	0	0	0	0	0	0	0	0	0	0	0	0%	1	74%
Data/Operator Error	0	0	0	0	0	0	0	0	0	0	0	0	0	0%	0	0%
Exposure	0	0	1	0	0	1	0	0	0	0	0	0	0	33%	0	0%
Equipment Malfunction	0	0	0	0	0	0	0	0	0	0	0	0	0	0%	0	0%
ACS Expired	0	0	0	0	0	0	0	0	0	0	0	0	0	0%	0	0%
<b>Total:</b>	<b>0</b>	<b>0</b>	<b>1</b>	<b>0</b>	<b>0</b>	<b>2</b>	<b>1</b>	<b>1</b>	<b>0</b>	<b>1</b>	<b>0</b>	<b>0</b>	<b>1</b>	<b>100%</b>	<b>2</b>	<b>100%</b>
<b>Summary Metrics</b>													<b>Year to Date Monthly Average</b>		<b>2010 Monthly Average</b>	
Daily Average Vehicle Passes	201	157	150	154	307	166	138	176	189	212	208	164	185		173	
Average Issued Speed	0	18	22	15	18	20	0	0	18	20	18	0	16		14	
Average Issued Red Seconds	0.0	99.1	50.0	54.9	34.9	99.9	0	0	99.9	66.7	99.9	0	67		62.9	
Citation / Violation Issuance	0%	100%	25%	13%	35%	5%	0%	0%	13%	33%	71%	0%	25%		13%	
Controllable Issuance Rate	0%	100%	67%	100%	100%	33%	0%	0%	100%	75%	100%	0%	68%		41%	

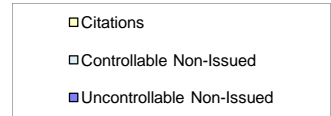
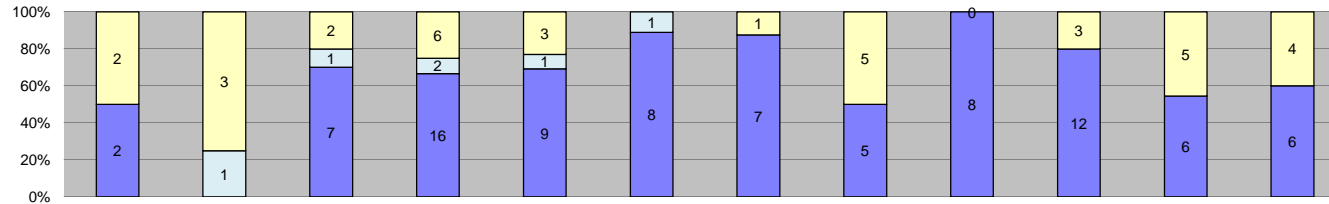


Events	2011												Year to Date Monthly Average		2010 Monthly Average	
	Jan-11	Feb-11	Mar-11	Apr-11	May-11	Jun-11	Jul-11	Aug-11	Sep-11	Oct-11	Nov-11	Dec-11	Quantity	%	Quantity	%
Non-Violations	750	821	859	771	859	946	596	522	643	683	588	871	742	95%	970	96%
Violations	39	29	35	29	33	43	29	26	43	49	32	38	35	5%	40	4%
<b>Total:</b>	<b>789</b>	<b>850</b>	<b>894</b>	<b>800</b>	<b>892</b>	<b>989</b>	<b>625</b>	<b>548</b>	<b>686</b>	<b>732</b>	<b>620</b>	<b>909</b>	<b>778</b>	<b>100%</b>	<b>1,010</b>	<b>100%</b>
<b>Violations</b>																
Uncontrollable Non-Issued	21	19	23	17	20	31	17	13	24	32	18	32	22	63%	24	59%
Controllable Non-Issued	6	0	4	4	2	5	3	3	13	7	1	0	4	11%	7	16%
Citations	12	10	8	8	11	7	9	10	6	10	13	6	9	26%	10	25%
<b>Total:</b>	<b>39</b>	<b>29</b>	<b>35</b>	<b>29</b>	<b>33</b>	<b>43</b>	<b>29</b>	<b>26</b>	<b>43</b>	<b>49</b>	<b>32</b>	<b>38</b>	<b>35</b>	<b>100%</b>	<b>40</b>	<b>100%</b>
<b>Non-Violations</b>																
Rear Axle Violation	0	0	0	0	0	0	0	0	0	0	0	0	0	0%	0	0%
Emergency Vehicle	1	1	3	2	5	6	3	2	2	7	2	6	3	0%	4	0%
Right Turn	0	0	0	0	0	0	0	0	0	0	0	0	0	0%	0	0%
No Violation Occurred	749	820	856	769	854	940	593	520	641	676	586	865	739	100%	970	100%
<b>Total:</b>	<b>750</b>	<b>821</b>	<b>859</b>	<b>771</b>	<b>859</b>	<b>946</b>	<b>596</b>	<b>522</b>	<b>643</b>	<b>683</b>	<b>588</b>	<b>871</b>	<b>742</b>	<b>100%</b>	<b>974</b>	<b>100%</b>
<b>Uncontrollable Non-Issued Violations</b>																
No Plate	3	2	5	2	2	3	2	3	3	2	2	3	3	12%	3	15%
Out of State Plate	0	0	2	0	0	0	1	0	1	0	0	1	0	2%	1	5%
Glare on Plate	0	0	0	0	0	0	0	0	0	0	0	0	0	0%	0	0%
Illegible Plate	0	0	0	0	0	0	1	0	0	1	0	0	0	1%	0	1%
Plate Obstructed	0	0	0	0	0	0	0	0	0	0	0	0	0	0%	0	0%
Windshield Glare	0	0	2	1	0	2	1	0	4	1	1	1	1	5%	1	5%
Driver Obstructed	3	2	2	1	2	1	1	0	2	2	3	4	2	9%	1	5%
Car Obstructed	9	13	12	11	7	21	8	6	9	22	7	10	11	51%	12	57%
No DMV Match Found	5	2	0	2	7	3	1	1	4	2	5	5	3	14%	2	8%
LASD Expired	0	0	0	0	0	0	0	0	0	0	0	0	0	0%	1	3%
LASD Return	1	0	0	0	2	1	2	3	1	2	0	3	1	31%	0	3%
Other	0	0	0	0	0	0	0	0	0	0	0	5	0	2%	0	0%
<b>Total:</b>	<b>21</b>	<b>19</b>	<b>23</b>	<b>17</b>	<b>20</b>	<b>31</b>	<b>17</b>	<b>13</b>	<b>24</b>	<b>32</b>	<b>18</b>	<b>32</b>	<b>22</b>	<b>100%</b>	<b>20</b>	<b>100%</b>
<b>Controllable Non-Issued Violations</b>																
Framing of Plate	0	0	0	0	0	0	0	2	0	2	1	0	0	10%	0	3%
Focus / Clarity of Plate	0	0	0	0	0	0	0	0	1	0	0	0	0	2%	0	3%
Dark Interior	2	0	2	0	0	0	0	0	2	3	0	0	1	19%	2	25%
Framing of Driver	4	0	2	3	0	1	3	1	8	2	0	0	2	50%	1	9%
Focus / Clarity of Driver	0	0	0	0	0	0	0	0	1	0	0	0	0	2%	0	0%
Framing of Car	0	0	0	1	1	0	0	0	0	0	0	0	0	4%	4	58%
Data/Operator Error	0	0	0	0	0	0	0	0	0	0	0	0	0	0%	0	0%
Exposure	0	0	0	0	1	0	0	0	0	0	0	0	0	2%	0	3%
Equipment Malfunction	0	0	0	0	0	4	0	0	1	0	0	0	0	10%	0	0%
ACS Expired	0	0	0	0	0	0	0	0	0	0	0	0	0	0%	0	0%
<b>Total:</b>	<b>6</b>	<b>0</b>	<b>4</b>	<b>4</b>	<b>2</b>	<b>5</b>	<b>3</b>	<b>3</b>	<b>13</b>	<b>7</b>	<b>1</b>	<b>0</b>	<b>4</b>	<b>100%</b>	<b>6</b>	<b>100%</b>
<b>Summary Metrics</b>																
Daily Average Vehicle Passes	573	535	566	476	554	558	500	524	618	679	592	577	Year to Date Monthly Average		2010 Monthly Average	
Average Issued Speed	17	18	17	19	20	21	18	19	19	22	19	18	563	577		
Average Issued Red Seconds	70.4	60.0	57.1	39.0	33.8	34.9	25.6	41.6	50.5	30.3	31.0	37.8	43	57.5		
Citation / Violation Issuance	31%	34%	23%	28%	33%	16%	31%	38%	14%	20%	41%	16%	27%	25%		
Controllable Issuance Rate	67%	100%	67%	67%	85%	58%	75%	77%	32%	59%	93%	100%	73%	50%		

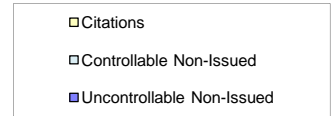
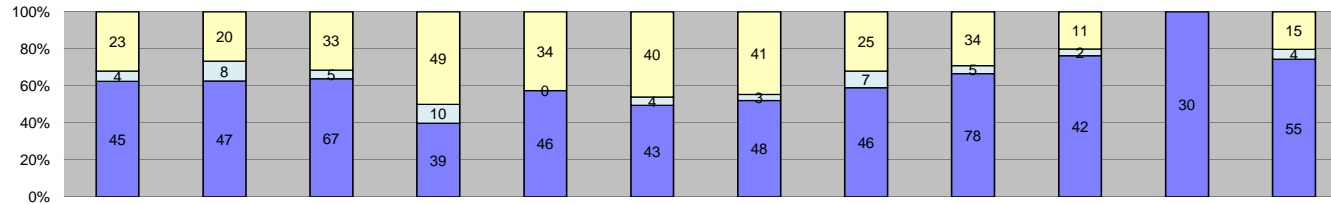




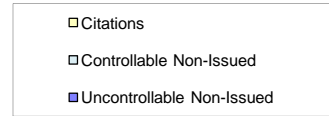
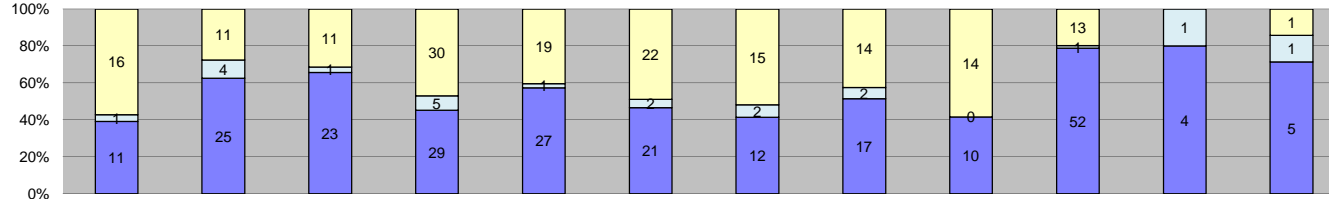
Events	Jan-11	Feb-11	Mar-11	Apr-11	May-11	Jun-11	Jul-11	Aug-11	Sep-11	Oct-11	Nov-11	Dec-11	Year to Date Monthly Average		2010 Monthly Average		
	Quantity	Quantity	Quantity	Quantity	Quantity	Quantity	Quantity	Quantity	Quantity	Quantity	Quantity	Quantity	Quantity	%	%	%	
Non-Violations	278	258	221	236	265	256	242	203	229	622	814	544	347	97%	355	97%	
Violations	6	6	3	8	10	8	3	6	7	23	17	14	9	3%	9	3%	
<b>Total:</b>	<b>284</b>	<b>264</b>	<b>224</b>	<b>244</b>	<b>275</b>	<b>264</b>	<b>245</b>	<b>209</b>	<b>236</b>	<b>645</b>	<b>831</b>	<b>558</b>	<b>357</b>	<b>100%</b>	<b>365</b>	<b>100%</b>	
<b>Violations</b>																	
Uncontrollable Non-Issued	3	3	0	4	9	3	2	3	7	21	15	8	7	70%	5	56%	
Controllable Non-Issued	0	0	2	1	0	1	0	0	0	0	0	3	1	6%	2	18%	
Citations	3	3	1	3	1	4	1	3	0	2	2	3	2	23%	2	25%	
<b>Total:</b>	<b>6</b>	<b>6</b>	<b>3</b>	<b>8</b>	<b>10</b>	<b>8</b>	<b>3</b>	<b>6</b>	<b>7</b>	<b>23</b>	<b>17</b>	<b>14</b>	<b>9</b>	<b>100%</b>	<b>9</b>	<b>100%</b>	
<b>Non-Violations</b>																	
Rear Axle Violation	0	0	0	0	0	0	0	0	0	0	0	0	0	0%	0	0%	
Emergency Vehicle	1	1	2	0	0	2	0	1	2	0	0	0	1	0%	1	0%	
Right Turn	0	0	0	0	0	0	0	0	0	0	0	0	0	0%	0	0%	
No Violation Occurred	277	257	219	236	265	254	242	202	227	622	814	544	347	100%	355	100%	
<b>Total:</b>	<b>278</b>	<b>258</b>	<b>221</b>	<b>236</b>	<b>265</b>	<b>256</b>	<b>242</b>	<b>203</b>	<b>229</b>	<b>622</b>	<b>814</b>	<b>544</b>	<b>347</b>	<b>100%</b>	<b>356</b>	<b>100%</b>	
<b>Uncontrollable Non-Issued Violations</b>																	
No Plate	0	1	0	0	0	0	1	0	0	2	0	0	0	5%	0	8%	
Out of State Plate	0	0	0	0	0	0	0	0	0	0	0	0	0	0%	0	0%	
Glare on Plate	0	0	0	0	0	0	0	0	0	0	0	0	0	0%	0	0%	
Illegible Plate	0	0	0	0	0	0	0	0	0	0	0	0	0	0%	0	0%	
Plate Obstructed	0	0	0	0	0	0	0	0	0	0	0	0	0	0%	0	0%	
Windshield Glare	0	0	0	0	0	0	0	0	0	0	0	0	0	0%	0	4%	
Driver Obstructed	0	0	0	1	2	0	0	0	0	1	0	0	0	5%	1	11%	
Car Obstructed	3	2	0	3	6	2	1	3	5	16	15	3	5	76%	3	66%	
No DMV Match Found	0	0	0	0	1	0	0	0	0	0	0	1	0	3%	0	8%	
LASD Expired	0	0	0	0	0	0	0	0	0	0	0	1	0	1%	0	4%	
LASD Return	0	0	0	0	0	1	0	0	2	2	0	1	1	86%	0	0%	
Other	0	0	0	0	0	0	0	0	0	0	0	2	0	3%	0	0%	
<b>Total:</b>	<b>3</b>	<b>3</b>	<b>0</b>	<b>4</b>	<b>9</b>	<b>3</b>	<b>2</b>	<b>3</b>	<b>7</b>	<b>21</b>	<b>15</b>	<b>8</b>	<b>7</b>	<b>100%</b>	<b>4</b>	<b>100%</b>	
<b>Controllable Non-Issued Violations</b>																	
Framing of Plate	0	0	0	0	0	0	0	0	0	0	0	0	0	0%	0	5%	
Focus / Clarity of Plate	0	0	0	0	0	0	0	0	0	0	0	0	0	0%	0	0%	
Dark Interior	0	0	1	0	0	0	0	0	0	0	0	1	0	29%	0	5%	
Framing of Driver	0	0	0	0	0	0	0	0	0	0	0	0	0	0%	0	5%	
Focus / Clarity of Driver	0	0	0	0	0	0	0	0	0	0	0	0	0	0%	0	0%	
Framing of Car	0	0	0	0	0	0	0	0	0	0	0	0	0	0%	1	75%	
Data/Operator Error	0	0	0	0	0	0	0	0	0	0	0	0	0	0%	0	5%	
Exposure	0	0	1	1	0	1	0	0	0	0	0	0	0	43%	0	0%	
Equipment Malfunction	0	0	0	0	0	0	0	0	0	0	0	2	0	29%	0	5%	
ACS Expired	0	0	0	0	0	0	0	0	0	0	0	0	0	0%	0	0%	
<b>Total:</b>	<b>0</b>	<b>0</b>	<b>2</b>	<b>1</b>	<b>0</b>	<b>1</b>	<b>0</b>	<b>0</b>	<b>0</b>	<b>0</b>	<b>0</b>	<b>3</b>	<b>1</b>	<b>100%</b>	<b>2</b>	<b>100%</b>	
<b>Summary Metrics</b>													<b>Year to Date Monthly Average</b>		<b>2010 Monthly Average</b>		
Daily Average Vehicle Passes	62	50	50	53	61	53	52	65	63	123	64	83	65		80		
Average Issued Speed	16	22	15	15	19	15	27	20	0	17	16	16	18		15		
Average Issued Red Seconds	88.7	82.9	99.9	99.9	99.9	42.3	99.9	64.2	0	59.1	83.5	73.5	81		81.6		
Citation / Violation Issuance	50%	50%	33%	38%	10%	50%	33%	50%	0%	9%	12%	21%	30%		25%		
Controllable Issuance Rate	100%	100%	33%	75%	100%	80%	100%	100%	0%	100%	100%	50%	85%		49%		



Events	Jan-11	Feb-11	Mar-11	Apr-11	May-11	Jun-11	Jul-11	Aug-11	Sep-11	Oct-11	Nov-11	Dec-11	Year to Date Monthly Average		2010 Monthly Average	
													Quantity	%	Quantity	%
Non-Violations	352	460	427	512	483	412	303	164	204	449	436	324	377	97%	436	97%
Violations	4	4	10	24	13	9	8	10	8	15	11	10	11	3%	14	3%
<b>Total:</b>	<b>356</b>	<b>464</b>	<b>437</b>	<b>536</b>	<b>496</b>	<b>421</b>	<b>311</b>	<b>174</b>	<b>212</b>	<b>464</b>	<b>447</b>	<b>334</b>	<b>388</b>	<b>100%</b>	<b>450</b>	<b>100%</b>
<b>Violations</b>																
Uncontrollable Non-Issued	2	0	7	16	9	8	7	5	8	12	6	6	7	68%	10	75%
Controllable Non-Issued	0	1	1	2	1	1	0	0	0	0	0	0	1	5%	1	9%
Citations	2	3	2	6	3	0	1	5	0	3	5	4	3	27%	2	15%
<b>Total:</b>	<b>4</b>	<b>4</b>	<b>10</b>	<b>24</b>	<b>13</b>	<b>9</b>	<b>8</b>	<b>10</b>	<b>8</b>	<b>15</b>	<b>11</b>	<b>10</b>	<b>11</b>	<b>100%</b>	<b>14</b>	<b>100%</b>
<b>Non-Violations</b>																
Rear Axle Violation	0	0	0	0	0	0	0	0	0	0	0	0	0	0%	0	0%
Emergency Vehicle	0	0	2	2	0	1	0	1	1	3	0	3	1	0%	1	0%
Right Turn	0	0	0	0	0	0	0	0	0	0	0	0	0	0%	0	0%
No Violation Occurred	352	460	425	510	483	411	303	163	203	446	436	321	376	100%	436	100%
<b>Total:</b>	<b>352</b>	<b>460</b>	<b>427</b>	<b>512</b>	<b>483</b>	<b>412</b>	<b>303</b>	<b>164</b>	<b>204</b>	<b>449</b>	<b>436</b>	<b>324</b>	<b>377</b>	<b>100%</b>	<b>437</b>	<b>100%</b>
<b>Uncontrollable Non-Issued Violations</b>																
No Plate	1	2	0	2	0	0	1	0	1	1	0	0	1	8%	1	12%
Out of State Plate	0	0	0	0	0	0	0	0	0	1	0	1	0	2%	0	3%
Glare on Plate	0	0	0	0	0	0	0	0	0	0	0	0	0	0%	0	0%
Illegible Plate	0	0	1	0	0	0	0	0	0	0	0	0	0	1%	0	2%
Plate Obstructed	0	0	0	0	0	0	0	0	0	0	0	0	0	0%	0	0%
Windshield Glare	0	0	0	1	1	0	0	1	0	0	0	0	0	3%	1	8%
Driver Obstructed	0	1	2	3	2	2	1	0	0	2	2	1	1	16%	1	8%
Car Obstructed	1	5	3	8	5	6	5	4	4	7	4	3	5	57%	5	49%
No DMV Match Found	0	2	1	1	1	0	0	0	0	0	0	0	0	5%	1	6%
LASD Expired	0	0	0	0	0	0	0	0	1	0	0	0	0	1%	0	4%
LASD Return	0	0	0	1	0	0	0	0	2	1	0	0	0	67%	0	0%
Other	0	1	0	0	0	0	0	0	0	0	0	1	0	2%	1	9%
<b>Total:</b>	<b>2</b>	<b>0</b>	<b>7</b>	<b>16</b>	<b>9</b>	<b>8</b>	<b>7</b>	<b>5</b>	<b>8</b>	<b>12</b>	<b>6</b>	<b>6</b>	<b>8</b>	<b>100%</b>	<b>10</b>	<b>100%</b>
<b>Controllable Non-Issued Violations</b>																
Framing of Plate	0	1	0	1	0	0	0	0	0	0	0	0	0	33%	1	47%
Focus / Clarity of Plate	0	0	0	0	1	0	0	0	0	0	0	0	0	17%	0	0%
Dark Interior	0	0	1	0	0	0	0	0	0	0	0	0	0	17%	1	47%
Framing of Driver	0	0	0	1	0	0	0	0	0	0	0	0	0	17%	0	7%
Focus / Clarity of Driver	0	0	0	0	0	0	0	0	0	0	0	0	0	0%	0	0%
Framing of Car	0	0	0	0	0	0	0	0	0	0	0	0	0	0%	0	0%
Data/Operator Error	0	0	0	0	0	0	0	0	0	0	0	0	0	0%	0	0%
Exposure	0	0	0	0	0	1	0	0	0	0	0	0	0	17%	0	0%
Equipment Malfunction	0	0	0	0	0	0	0	0	0	0	0	0	0	0%	0	0%
ACS Expired	0	0	0	0	0	0	0	0	0	0	0	0	0	0%	0	0%
<b>Total:</b>	<b>0</b>	<b>1</b>	<b>1</b>	<b>2</b>	<b>1</b>	<b>1</b>	<b>0</b>	<b>0</b>	<b>0</b>	<b>0</b>	<b>0</b>	<b>0</b>	<b>1</b>	<b>100%</b>	<b>1</b>	<b>100%</b>
<b>Summary Metrics</b>																
Daily Average Vehicle Passes	116	322	156	127	163	150	220	164	173	308	120	152	Year to Date Monthly Average		2010 Monthly Average	
Average Issued Speed	18	23	19	14	19	0	15	17	0	17	19	19	181		121	
Average Issued Red Seconds	99.9	78.6	50.1	88.2	99.9	0	99.9	80.1	0	99.9	60.2	25.4	78		58.4	
Citation / Violation Issuance	50%	75%	20%	25%	23%	0%	13%	50%	0%	20%	45%	40%	30%		15%	
Controllable Issuance Rate	100%	75%	67%	75%	75%	0%	100%	100%	0%	100%	100%	100%	81%		52%	



Events	Jan-11	Feb-11	Mar-11	Apr-11	May-11	Jun-11	Jul-11	Aug-11	Sep-11	Oct-11	Nov-11	Dec-11	Year to Date Monthly Average		2010 Monthly Average	
													Quantity	%	Quantity	%
Non-Violations	1,755	1,699	2,097	1,844	1,774	1,658	1,378	898	1,443	1,273	1,485	2,122	1,619	95%	1,708	94%
Violations	72	75	105	98	80	87	92	78	117	55	30	74	80	5%	116	6%
<b>Total:</b>	<b>1,827</b>	<b>1,774</b>	<b>2,202</b>	<b>1,942</b>	<b>1,854</b>	<b>1,745</b>	<b>1,470</b>	<b>976</b>	<b>1,560</b>	<b>1,328</b>	<b>1,515</b>	<b>2,196</b>	<b>1,699</b>	<b>100%</b>	<b>1,824</b>	<b>100%</b>
<b>Violations</b>																
Uncontrollable Non-Issued	45	47	67	39	46	43	48	46	78	42	30	55	49	61%	69	59%
Controllable Non-Issued	4	8	5	10	0	4	3	7	5	2	0	4	4	5%	17	15%
Citations	23	20	33	49	34	40	41	25	34	11	0	15	27	34%	30	26%
<b>Total:</b>	<b>72</b>	<b>75</b>	<b>105</b>	<b>98</b>	<b>80</b>	<b>87</b>	<b>92</b>	<b>78</b>	<b>117</b>	<b>55</b>	<b>30</b>	<b>74</b>	<b>80</b>	<b>100%</b>	<b>116</b>	<b>100%</b>
<b>Non-Violations</b>																
Rear Axle Violation	0	1	1	0	1	1	0	0	0	0	0	0	0	0%	0	0%
Emergency Vehicle	9	18	9	14	19	18	10	18	12	4	1	7	12	1%	19	1%
Right Turn	0	0	0	0	0	0	0	0	0	0	0	0	0	0%	0	0%
No Violation Occurred	1,746	1,680	2,087	1,830	1,754	1,639	1,368	880	1,431	1,269	1,484	2,115	1,607	99%	1,708	99%
<b>Total:</b>	<b>1,755</b>	<b>1,699</b>	<b>2,097</b>	<b>1,844</b>	<b>1,774</b>	<b>1,658</b>	<b>1,378</b>	<b>898</b>	<b>1,443</b>	<b>1,273</b>	<b>1,485</b>	<b>2,122</b>	<b>1,619</b>	<b>100%</b>	<b>1,727</b>	<b>100%</b>
<b>Uncontrollable Non-Issued Violations</b>																
No Plate	7	8	5	4	3	8	5	10	10	2	0	6	6	12%	8	16%
Out of State Plate	0	3	0	0	0	1	0	0	1	0	0	1	1	1%	1	2%
Glare on Plate	0	1	0	0	0	0	0	0	2	0	0	0	0	1%	0	0%
Illegible Plate	1	1	1	1	0	0	1	1	0	0	0	2	1	1%	1	2%
Plate Obstructed	0	0	3	0	1	0	1	0	1	0	0	0	1	1%	1	1%
Windshield Glare	4	2	6	3	12	8	5	7	6	0	0	1	5	9%	2	5%
Driver Obstructed	5	2	6	4	3	0	7	3	3	2	0	0	3	6%	4	7%
Car Obstructed	25	23	41	22	21	18	25	14	36	18	30	34	26	52%	25	50%
No DMV Match Found	2	4	1	2	5	3	2	4	12	1	0	0	3	6%	4	8%
LASD Expired	0	0	0	0	0	0	0	0	1	0	0	1	0	0%	3	7%
LASD Return	1	3	4	3	1	5	2	7	6	2	0	3	3	71%	1	5%
Other	0	0	0	0	0	0	0	0	0	17	0	7	2	4%	0	0%
<b>Total:</b>	<b>45</b>	<b>47</b>	<b>67</b>	<b>39</b>	<b>46</b>	<b>43</b>	<b>48</b>	<b>46</b>	<b>78</b>	<b>42</b>	<b>30</b>	<b>55</b>	<b>49</b>	<b>100%</b>	<b>50</b>	<b>100%</b>
<b>Controllable Non-Issued Violations</b>																
Framing of Plate	1	3	2	2	0	1	0	2	4	1	0	1	1	33%	6	34%
Focus / Clarity of Plate	0	0	0	0	0	0	0	0	0	0	0	0	0	0%	0	2%
Dark Interior	2	3	1	6	0	0	0	3	0	0	0	0	1	29%	1	5%
Framing of Driver	0	1	2	1	0	1	3	2	1	0	0	3	1	27%	2	9%
Focus / Clarity of Driver	0	0	0	0	0	0	0	0	0	0	0	0	0	0%	0	1%
Framing of Car	1	0	0	1	0	0	0	0	0	0	0	0	0	4%	6	36%
Data/Operator Error	0	0	0	0	0	0	0	0	0	0	0	0	0	0%	0	3%
Exposure	0	1	0	0	0	2	0	0	0	1	0	0	0	8%	1	5%
Equipment Malfunction	0	0	0	0	0	0	0	0	0	0	0	0	0	0%	1	7%
ACS Expired	0	0	0	0	0	0	0	0	0	0	0	0	0	0%	0	0%
<b>Total:</b>	<b>4</b>	<b>8</b>	<b>5</b>	<b>10</b>	<b>0</b>	<b>4</b>	<b>3</b>	<b>7</b>	<b>5</b>	<b>2</b>	<b>0</b>	<b>4</b>	<b>4</b>	<b>100%</b>	<b>17</b>	<b>100%</b>
<b>Summary Metrics</b>																
Daily Average Vehicle Passes	1,870	1,776	1,782	1,766	1,782	1,863	1,638	1,720	1,734	1,662	1,932	1,747	Year to Date Monthly Average		2010 Monthly Average	
Average Issued Speed	21	22	22	22	20	21	22	21	21	22	0	23	1,773		1,797	
Average Issued Red Seconds	30.0	27.3	13.1	27.8	29.3	15.9	25.6	11.7	26.3	37.3	0	20.8	24		24.1	
Citation / Violation Issuance	32%	27%	31%	50%	43%	46%	45%	32%	29%	20%	0%	20%	31%		26%	
Controllable Issuance Rate	85%	71%	87%	83%	100%	91%	93%	78%	87%	85%	0%	79%	85%		45%	



Events	2011												Year to Date Monthly Average		2010 Monthly Average	
	Jan-11	Feb-11	Mar-11	Apr-11	May-11	Jun-11	Jul-11	Aug-11	Sep-11	Oct-11	Nov-11	Dec-11	Quantity	%	Quantity	%
Non-Violations	755	646	772	715	744	699	475	221	159	174	163	437	497	93%	754	94%
Violations	28	40	35	64	47	45	29	33	24	66	5	7	35	7%	44	6%
<b>Total:</b>	<b>783</b>	<b>686</b>	<b>807</b>	<b>779</b>	<b>791</b>	<b>744</b>	<b>504</b>	<b>254</b>	<b>183</b>	<b>240</b>	<b>168</b>	<b>444</b>	<b>532</b>	<b>100%</b>	<b>798</b>	<b>100%</b>
<b>Violations</b>																
Uncontrollable Non-Issued	11	25	23	29	27	21	12	17	10	52	4	5	20	56%	22	50%
Controllable Non-Issued	1	4	1	5	1	2	2	2	0	1	1	1	2	5%	2	5%
Citations	16	11	11	30	19	22	15	14	14	13	0	1	14	39%	20	44%
<b>Total:</b>	<b>28</b>	<b>40</b>	<b>35</b>	<b>64</b>	<b>47</b>	<b>45</b>	<b>29</b>	<b>33</b>	<b>24</b>	<b>66</b>	<b>5</b>	<b>7</b>	<b>35</b>	<b>100%</b>	<b>44</b>	<b>100%</b>
<b>Non-Violations</b>																
Rear Axle Violation	0	0	0	0	1	2	0	0	1	1	0	1	1	0%	0	0%
Emergency Vehicle	4	2	1	2	2	4	3	3	3	2	0	0	2	0%	3	0%
Right Turn	0	0	0	0	0	0	0	0	0	0	0	0	0	0%	0	0%
No Violation Occurred	751	644	771	713	741	693	472	218	155	171	163	436	494	99%	754	100%
<b>Total:</b>	<b>755</b>	<b>646</b>	<b>772</b>	<b>715</b>	<b>744</b>	<b>699</b>	<b>475</b>	<b>221</b>	<b>159</b>	<b>174</b>	<b>163</b>	<b>437</b>	<b>497</b>	<b>100%</b>	<b>757</b>	<b>100%</b>
<b>Uncontrollable Non-Issued Violations</b>																
No Plate	4	3	3	5	3	6	1	3	3	9	1	1	4	18%	5	23%
Out of State Plate	1	1	1	0	1	0	1	1	1	0	0	0	1	3%	0	1%
Glare on Plate	0	0	0	0	0	0	0	0	0	0	0	0	0	0%	0	1%
Illegible Plate	0	0	0	1	0	0	0	0	0	0	0	0	0	0%	0	0%
Plate Obstructed	0	0	0	0	0	0	0	1	1	0	0	0	0	1%	0	0%
Windshield Glare	0	0	2	2	0	2	1	0	0	0	0	0	1	3%	0	2%
Driver Obstructed	1	4	4	2	2	0	0	2	1	2	0	0	2	8%	2	9%
Car Obstructed	3	10	6	13	11	10	6	7	2	4	3	1	6	32%	7	35%
No DMV Match Found	1	4	6	5	4	2	2	1	1	1	0	1	2	12%	4	20%
LASD Expired	0	0	0	0	0	0	0	0	0	0	0	0	0	0%	2	9%
LASD Return	1	3	1	1	6	1	1	2	1	0	0	0	1	81%	0	8%
Other	0	0	0	0	0	0	0	0	0	36	0	2	3	16%	0	0%
<b>Total:</b>	<b>11</b>	<b>25</b>	<b>23</b>	<b>29</b>	<b>27</b>	<b>21</b>	<b>12</b>	<b>17</b>	<b>10</b>	<b>52</b>	<b>4</b>	<b>5</b>	<b>20</b>	<b>100%</b>	<b>20</b>	<b>100%</b>
<b>Controllable Non-Issued Violations</b>																
Framing of Plate	0	2	1	1	1	0	0	0	0	0	0	0	0	24%	1	50%
Focus / Clarity of Plate	0	0	0	0	0	0	0	0	0	0	0	0	0	0%	0	0%
Dark Interior	0	0	0	0	0	0	0	0	0	0	1	0	0	5%	0	15%
Framing of Driver	1	1	0	3	0	1	0	1	0	1	0	0	1	38%	1	31%
Focus / Clarity of Driver	0	0	0	0	0	0	0	0	0	0	0	0	0	0%	0	0%
Framing of Car	0	0	0	1	0	0	0	0	0	0	0	0	0	5%	0	0%
Data/Operator Error	0	1	0	0	0	0	0	0	0	0	0	0	0	5%	0	0%
Exposure	0	0	0	0	0	1	2	1	0	0	0	0	0	19%	0	0%
Equipment Malfunction	0	0	0	0	0	0	0	0	0	0	0	0	0	0%	0	0%
ACS Expired	0	0	0	0	0	0	0	0	0	0	1	0	0	5%	0	4%
<b>Total:</b>	<b>1</b>	<b>4</b>	<b>1</b>	<b>5</b>	<b>1</b>	<b>2</b>	<b>2</b>	<b>2</b>	<b>0</b>	<b>1</b>	<b>1</b>	<b>1</b>	<b>2</b>	<b>100%</b>	<b>2</b>	<b>100%</b>
<b>Summary Metrics</b>																
Daily Average Vehicle Passes	412	323	741	356	353	317	340	395	343	676	426	316	Year to Date Monthly Average		2010 Monthly Average	
Average Issued Speed	18	19	19	18	21	19	19	21	21	19	0	16	416		379	
Average Issued Red Seconds	84.3	46.4	36.6	56.1	46.3	59.7	56.9	47.2	66.8	22.3	0	99.9	57		57.3	
Citation / Violation Issuance	57%	28%	31%	47%	40%	49%	52%	42%	58%	20%	0%	14%	37%		44%	
Controllable Issuance Rate	94%	73%	92%	86%	95%	92%	88%	88%	100%	93%	0%	50%	79%		80%	

**Calls For Information**

Reason for Call	Dec-11	3 Month Average	Year to Date Average	Year to Date Total	2010 Average
<i>Appointment</i>	4	4	6	69	9
<i>Bail</i>	8	4	7	79	8
<i>Complaint</i>	0	0	0	0	1
<i>Contest Violation</i>	13	13	12	144	10
<i>Courtesy Notice</i>	0	0	0	0	0
<i>Explain Citation</i>	4	4	4	44	2
<i>Explain Court</i>	0	0	0	3	0
<i>Explain the Project</i>	0	0	0	0	0
<i>Extension</i>	0	2	2	24	3
<i>Other</i>	0	0	0	1	0
<i>Affidavit of Non-Liability</i>	7	9	10	124	11
<i>Affidavit of Non-Liability Status</i>	0	0	1	11	1
<i>Traffic School</i>	1	1	1	12	2
<b>Total Calls</b>	<b>37</b>	<b>37</b>	<b>43</b>	<b>511</b>	<b>46</b>
<b>Appointments Scheduled</b>	<b>3</b>	<b>4</b>	<b>6</b>	<b>66</b>	<b>7</b>
<b>Affidavits of Non-Liability Processed</b>	<b>52</b>	<b>49</b>	<b>56</b>	<b>671</b>	<b>50</b>
<b>Court Packets Prepared</b>	<b>27</b>	<b>45</b>	<b>39</b>	<b>471</b>	<b>12</b>



## Los Angeles County MTA Gold Line Monthly Citation Yield - By Location *December 2011*

Direction	Location	Code	Days of Enforcement	Events	Violations	Citations	Yield*
EB to NB	3rd & Civic Center	4007	31	925	22	4	0.13
WB to SB	3rd & La Verne	4009	31	326	19	5	0.16
EB to NB	3rd & Mednik	4017	31	387	30	10	0.32
WB to SB	3rd & Mednik	4019	31	313	23	9	0.29
EB to NB	3rd & Arizona	4027	31	683	25	8	0.26
WB to SB	3rd & Arizona	4029	31	160	7	3	0.10
EB to NB	3rd and McDonnell	4037	31	817	23	5	0.16
WB to SB	3rd and McDonnell	4039	31	364	12	3	0.10
EB to NB	3rd & Ford	4047	31	531	52	20	0.65
WB to SB	3rd & Ford	4049	31	235	26	6	0.19
EB to NB	3rd & Eastern	4057	31	261	99	60	1.94
WB to SB	3rd & Eastern	4059	31	131	14	6	0.19
WB to SB	3rd & Downey	4069	31	801	52	16	0.52
EB to NB	3rd & Gage	4077	31	225	36	5	0.16
WB to SB	3rd & Gage	4079	31	419	97	16	0.52
EB to NB	3rd & Rowan	4083	31	1,026	80	9	0.29
WB to SB	3rd & Rowan	4085	31	73	45	12	0.39
EB to NB	1st & Lorena	4087	31	190	24	11	0.35
WB to SB	1st & Lorena	4089	31	134	14	7	0.23
EB to NB	1st & Clarence	4097	31	380	6	0	0.00
WB to SB	1st & Clarence	4099	31	909	38	6	0.19
WB to SB	1st & Utah	4109	31	558	14	3	0.10
WB to SB	1st & Anderson	4119	31	334	10	4	0.13
EB to NB	1st & Mission	4127	31	2,196	74	15	0.48
WB to SB	1st & Mission	4129	31	444	7	1	0.03
<b>Totals</b>			<b>31</b>	<b>12,822</b>	<b>849</b>	<b>244</b>	<b>7.87</b>

\*Yield is the number of citations issued per day of enforcement.



Los Angeles County MTA Gold Line  
Disposition Summary Report  
December 2011

Disposition Type	Dec-11		3 Month Average		YTD Total		YTD Average		2010 Average	
	Count	Amount Paid	Count	Amount Paid	Count	Amount Paid	Count	Amount Paid	Count	Amount Paid
<i>Bail Forfeiture</i>	51	\$26,067.00	52	\$25,426.33	694	\$337,695.00	58	\$28,141.25	49	\$22,895.25
<i>Fine Paid</i>	22	\$10,764.00	20	\$9,354.67	222	\$100,619.95	19	\$8,385.00	6	\$2,321.67
<i>Department Void</i>	2	\$0.00	16	\$0.00	75	\$0.00	6	\$0.00	2	\$0.00
<i>Not Guilty</i>	30	\$0.00	38	\$0.00	455	\$0.00	38	\$0.00	46	\$0.00
<i>Section D Void</i>	37	\$0.00	43	\$0.00	684	\$0.00	57	\$0.00	46	\$0.00
<i>Traffic School</i>	43	\$20,434.00	43	\$21,405.33	738	\$361,483.00	62	\$30,123.58	42	\$19,628.08
<b>Court Gross Total</b>	<b>185</b>	<b>\$57,265.00</b>	<b>212</b>	<b>\$56,186.33</b>	<b>2,868</b>	<b>\$799,797.95</b>	<b>239</b>	<b>\$66,649.83</b>	<b>192</b>	<b>\$44,845.00</b>
<b>MTA Gross Total*</b>	<b>116</b>	<b>\$16,827.78</b>	<b>115</b>	<b>\$16,686.56</b>	<b>1,654</b>	<b>\$240,532.86</b>	<b>138</b>	<b>\$20,044.41</b>	<b>98</b>	<b>\$14,173.39</b>

\*Logic built on following model (assuming the new 2009 fine and fee structure):  
 MTA receives \$146.31 of \$446.00 citation where bail forfeiture and fine paid occurs  
 MTA receives \$148.05 of \$509.00 citation when traffic school option is paid for

	<u>Total Events</u>	<u>Non Violations</u>	<u>Potential Violations</u>	<u>Percent Citable</u>	<u>Non Issued Violations</u>	<u>No DMV Match</u>	<u>Police/ Client Rejected</u>	<u>Citations Issued</u>	<u>DMV Match Rate</u>	<u>Issuance Rate</u>	<u>Dispo Paid</u>	<u>Pay Rate</u>	<u>Closed No Pay</u>	<u>Pending</u>	<u>Closure Rate</u>	<u>Court Packs</u>	<u>Contest Rate</u>
Dec-09	5,805	5,387	418	7.20%	258	29	14	160	85.71%	38.28%	89	56%	38	33	79%	0	-
Jan-10	12,371	11,195	1,176	9.51%	843	65	40	333	85.16%	28.32%	158	47%	122	53	84%	0	-
Feb-10	11,564	10,651	913	7.90%	604	58	19	309	84.97%	33.84%	144	47%	118	47	85%	0	-
Mar-10	13,350	12,264	1,086	8.13%	739	79	26	347	82.52%	31.95%	157	45%	130	60	83%	0	-
Apr-10	14,976	13,798	1,178	7.87%	809	68	46	369	85.92%	31.32%	151	94%	162	56	85%	4	4.5%
May-10	13,007	11,845	1,162	8.93%	855	70	38	307	83.13%	26.42%	137	41%	122	48	84%	3	1.9%
Jun-10	13,058	11,782	1,276	9.77%	895	66	72	381	87.28%	29.86%	166	54%	163	52	86%	4	2.8%
Jul-10	13,229	11,896	1,333	10.08%	1000	62	78	333	86.89%	24.98%	137	39%	142	54	84%	26	16.6%
Aug-10	13,811	12,469	1,342	9.72%	1053	83	70	289	81.22%	21.54%	116	31%	123	50	83%	0	0.0%
Sep-10	14,099	12,605	1,494	10.60%	1090	69	40	404	86.55%	27.04%	210	68%	115	79	80%	2	1.5%
Oct-10	12,325	11,102	1,223	9.92%	882	75	27	341	83.07%	27.88%	165	43%	96	80	77%	3	1.8%
Nov-10	12,575	11,261	1,314	10.45%	922	72	49	392	85.96%	29.83%	194	58%	104	94	76%	16	11.7%
Dec-10	14,143	12,889	1,254	8.87%	933	61	20	321	84.83%	25.60%	153	53%	105	63	80%	84	72.4%
Jan-11	12,708	11,805	903	7.11%	565	78	16	338	81.94%	37.43%	128	32%	147	63	81%	38	18.1%
Feb-11	12,856	11,969	887	6.90%	559	72	16	328	82.69%	36.98%	107	31%	142	79	76%	27	16.4%
Mar-11	14,005	12,975	1,030	7.35%	709	64	21	321	84.24%	31.17%	127	32%	103	91	72%	23	11.9%
Apr-11	13,373	12,307	1,066	7.97%	719	82	102	347	84.56%	32.55%	145	45%	100	102	71%	39	25.5%
May-11	13,666	12,487	1,179	8.63%	814	104	112	365	82.10%	30.96%	109	32%	112	144	61%	35	27.3%
Jun-11	12,946	11,982	964	7.45%	672	82	104	292	82.85%	30.29%	76	23%	69	147	50%	43	40.2%
Jul-11	11,546	10,599	947	8.20%	667	71	135	280	85.39%	29.57%	64	20%	65	151	46%	62	48.8%
Aug-11	9,015	8,185	830	9.21%	554	33	127	276	92.43%	33.25%	68	20%	66	142	49%	55	43.3%
Sep-11	9,303	8,386	917	9.86%	686	104	125	231	77.39%	25.19%	44	13%	14	173	25%	43	33.9%
Oct-11	10,383	9,500	883	8.50%	669	61	120	214	84.56%	24.24%	28	8%	13	173	19%	36	28.3%
Nov-11	9,455	8,859	596	6.30%	410	63	92	186	81.52%	31.21%	4	1%	11	171	8%	43	33.9%
Dec-11	12,822	11,973	849	6.62%	605	64	141	244	85.75%	28.74%	1	0%	19	224	8%	27	18.6%
<b>Total</b>	<b>347,147</b>	<b>280,171</b>	<b>26220</b>	<b>19.29%</b>	<b>18,512</b>	<b>1,735</b>	<b>1650</b>	<b>7,708</b>	<b>84.36%</b>	<b>29.40%</b>	<b>2,878</b>	<b>40.27%</b>	<b>2,401</b>	<b>2,429</b>	<b>73.66%</b>	<b>11</b>	<b>21.87%</b>

\* Pay Rate and Closure Rate percentages are based on a 3 month (90 day) lag

\*\* Contested Citations take into account a 3 month (90 day) lag from the violation date to the trail date.