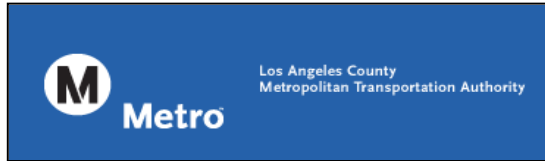


LOS ANGELES COUNTY
METROPOLITAN TRANSPORTATION AUTHORITY

Photo Enforcement Services



Gold Line Monthly Report



December 2014



Prepared by: Xerox State and Local Solutions
Confidential

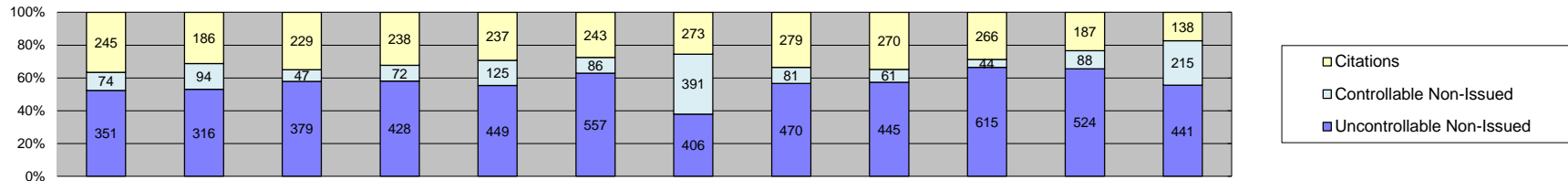


Table of Contents

Report Title	Page
<i>Approach Summary Report, All Locations.....</i>	3
<i>Approach Summary Report, Location 4007: EB to NB 3rd @ Civic Center.....</i>	4
<i>Approach Summary Report, Location 4009: WB to SB 3rd @ La Verne.....</i>	5
<i>Approach Summary Report, Location 4017: EB to NB 3rd @ Mednik.....</i>	6
<i>Approach Summary Report, Location 4019: WB to SB 3rd @ Mednik.....</i>	7
<i>Approach Summary Report, Location 4027: EB to NB 3rd @ Arizona.....</i>	8
<i>Approach Summary Report, Location 4029: WB to SB 3rd @ Arizona.....</i>	9
<i>Approach Summary Report, Location 4037: EB to NB 3rd @ McDonnell.....</i>	10
<i>Approach Summary Report, Location 4039: WB to SB 3rd @ McDonnell.....</i>	11
<i>Approach Summary Report, Location 4047: EB to NB 3rd @ Ford.....</i>	12
<i>Approach Summary Report, Location 4049: WB to SB 3rd @ Ford.....</i>	13
<i>Approach Summary Report, Location 4057: EB to NB 3rd @ Eastern.....</i>	14
<i>Approach Summary Report, Location 4059: WB to SB 3rd @ Eastern.....</i>	15
<i>Approach Summary Report, Location 4069: WB to SB 3rd @ Downey.....</i>	16
<i>Approach Summary Report, Location 4077: EB to NB 3rd @ Gage.....</i>	17
<i>Approach Summary Report, Location 4079: WB to SB 3rd @ Gage.....</i>	18
<i>Approach Summary Report, Location 4083: EB to NB 1st @ Rowan.....</i>	19
<i>Approach Summary Report, Location 4085: WB to SB 1st @ Rowan.....</i>	20
<i>Approach Summary Report, Location 4087: EB to NB 1st @ Lorena.....</i>	21
<i>Approach Summary Report, Location 4089: WB to SB 1st @ Lorena.....</i>	22
<i>Approach Summary Report, Location 4097: EB to NB 1st @ Clarence.....</i>	23
<i>Approach Summary Report, Location 4099: WB to SB 1st @ Clarence.....</i>	24
<i>Approach Summary Report, Location 4109: WB to SB 1st @ Utah.....</i>	25
<i>Approach Summary Report, Location 4119: WB to SB 1st @ Anderson.....</i>	26
<i>Approach Summary Report, Location 4127: EB to NB 1st @ Mission.....</i>	27
<i>Approach Summary Report, Location 4129: WB to SB 1st @ Mission.....</i>	27
<i>Approach Summary Report, Location 4137: SB to EB Alameda St. @ Temple St.....</i>	28
<i>Customer Service Report.....</i>	29
<i>Monthly Citation Yield Report.....</i>	30
<i>Disposition Summary Report.....</i>	31
<i>Performance Report.....</i>	32



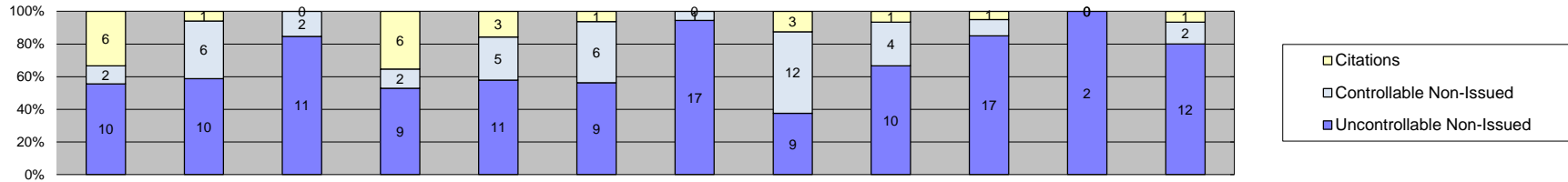
Los Angeles County MTA Gold Line Approach Summary Report All Locations



Events	2014												Year to Date Monthly Average		2013 Monthly Average		
	Jan-14	Feb-14	Mar-14	Apr-14	May-14	Jun-14	Jul-14	Aug-14	Sep-14	Oct-14	Nov-14	Dec-14	Quantity	%	Quantity	%	
Non-Violations	9,971	8,103	9,357	9,438	9,406	9,854	9,307	10,929	9,353	8,690	8,119	8,797	9,277	92%	8,462	92%	
Violations	670	596	655	738	811	886	1,070	830	776	925	799	794	796	8%	760	8%	
Total:	10,641	8,699	10,012	10,176	10,217	10,740	10,377	11,759	10,129	9,615	8,918	9,591	10,073	100%	9,221	100%	
Violations																	
Uncontrollable Non-Issued	351	316	379	428	449	557	406	470	445	615	524	441	448	56%	506	67%	
Controllable Non-Issued	74	94	47	72	125	86	391	81	61	44	88	215	115	14%	47	6%	
Citations	245	186	229	238	237	243	273	279	270	266	187	138	233	29%	206	27%	
Total:	670	596	655	738	811	886	1,070	830	776	925	799	794	796	100%	760	100%	
Non-Violations																	
Rear Axle Violation	3	5	1	1	0	0	2	1	2	0	0	0	2	0%	5	0%	
Emergency Vehicle	270	206	179	142	155	151	279	290	235	112	100	140	188	2%	241	3%	
Right Turn	0	0	0	0	0	0	0	0	0	0	0	1	1	0%	0	0%	
No Violation Occurred	9,698	7,892	9,177	9,295	9,251	9,703	9,026	10,638	9,116	8,578	8,019	8,656	9,087	98%	8,216	97%	
Total:	9,971	8,103	9,357	9,438	9,406	9,854	9,307	10,929	9,353	8,690	8,119	8,797	9,279	100%	8,462	100%	
Uncontrollable Non-Issued Violations																	
No Plate	58	68	75	77	83	91	74	84	81	105	79	83	80	14%	64	12%	
Out of State Plate	6	8	6	6	6	6	9	9	14	9	10	12	8	1%	6	1%	
Glare on Plate	1	13	4	13	18	29	3	2	3	19	16	0	11	2%	14	3%	
Illegible Plate	93	34	37	52	38	23	46	54	46	57	93	76	54	10%	104	19%	
Plate Obstructed	6	1	5	13	4	7	7	1	6	24	10	3	7	1%	7	1%	
Windshield Glare	12	16	25	38	67	59	56	86	52	34	48	39	44	8%	31	6%	
Driver Obstructed	32	24	43	28	38	34	34	31	32	40	20	19	31	6%	21	4%	
Car Obstructed	1	1	5	3	3	2	7	4	11	10	1	1	4	1%	82	15%	
No DMV Match Found	64	66	77	85	74	104	88	84	95	137	119	71	89	16%	77	14%	
LASD Expired	0	0	0	0	0	0	0	0	0	0	0	0	0	0%	29	5%	
LASD Return	78	85	102	113	118	76	82	115	105	180	128	137	110	19%	92	17%	
Other	0	0	0	0	0	126	0	0	0	0	0	0	126	22%	18	3%	
Total:	351	316	379	428	449	557	406	470	445	615	524	441	565	100%	544	100%	
Controllable Non-Issued Violations																	
Framing of Plate	0	2	2	3	5	1	4	3	2	0	0	0	3	2%	4	6%	
Focus / Clarity of Plate	1	45	1	1	0	10	0	0	0	2	7	25	12	7%	3	4%	
Dark Interior	12	10	4	14	9	18	6	5	9	22	26	48	15	9%	5	7%	
Framing of Driver	2	2	3	2	0	0	1	1	0	0	0	0	2	1%	2	3%	
Focus / Clarity of Driver	1	0	0	0	0	1	0	0	0	0	42	99	36	22%	1	1%	
Framing of Car	2	0	0	0	1	1	0	0	0	7	0	0	3	2%	2	2%	
Data/Operator Error	0	2	2	1	3	0	0	2	0	1	0	4	2	1%	7	10%	
Exposure	14	27	10	9	19	34	9	64	35	12	13	4	21	13%	6	8%	
Equipment Malfunction	42	6	21	42	88	21	371	6	15	0	0	35	65	40%	41	57%	
ACS Expired	0	0	4	0	0	0	0	0	0	0	0	0	4	2%	1	1%	
Total:	74	94	47	72	125	86	391	81	61	44	88	215	162	100%	72	100%	
Summary Metrics																	
Daily Average Vehicle Passes	20,563												Year to Date Monthly Average		2013 Monthly Average		
Average Issued Speed	20												19,376		18,985		
Average Issued Red Seconds	36.8												33.6		42.1		
Citation / Violation Issuance Rate	37%												30%		27%		
Controllable Issuance Rate	77%												70%		82%		



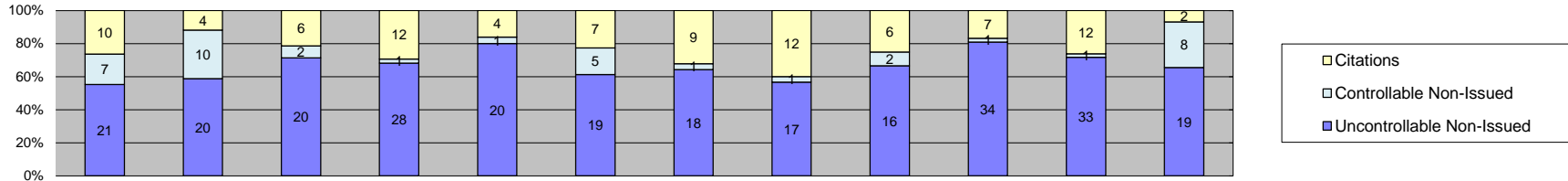
**Los Angeles County MTA Gold Line
Approach Summary Report
Location 4007: EB to NB 3rd @ Civic Center**



Events	2014												Year to Date Monthly Average		2013 Monthly Average	
	Jan-14	Feb-14	Mar-14	Apr-14	May-14	Jun-14	Jul-14	Aug-14	Sep-14	Oct-14	Nov-14	Dec-14	Quantity	%	Quantity	%
Non-Violations	1,023	803	775	1,290	984	2,534	1,079	2,199	1,441	719	156	809	1,151	99%	659	97%
Violations	18	17	13	17	19	16	18	24	15	20	2	15	16	1%	19	3%
Total:	1,041	820	788	1,307	1,003	2,550	1,097	2,223	1,456	739	158	824	1,167	100%	678	100%
Violations																
Uncontrollable Non-Issued	10	10	11	9	11	9	17	9	10	17	2	12	11	62%	14	67%
Controllable Non-Issued	2	6	2	2	5	6	1	12	4	2	0	2	4	23%	1	8%
Citations	6	1	0	6	3	1	0	3	1	1	0	1	3	15%	5	25%
Total:	18	17	13	17	19	16	18	24	15	20	2	15	17	100%	20	100%
Non-Violations																
Rear Axle Violation	0	0	0	1	0	0	0	0	0	0	0	0	1	0%	0	0%
Emergency Vehicle	5	5	4	2	3	0	3	3	11	0	0	2	4	0%	6	1%
Right Turn	0	0	0	0	0	0	0	0	0	0	0	0	0	0%	0	0%
No Violation Occurred	1,018	798	771	1,287	981	2,534	1,076	2,196	1,430	719	156	807	1,148	100%	654	99%
Total:	1,023	803	775	1,290	984	2,534	1,079	2,199	1,441	719	156	809	1,153	100%	659	100%
Uncontrollable Non-Issued Violations																
No Plate	1	1	2	3	2	2	2	1	1	2	0	2	2	11%	2	8%
Out of State Plate	1	1	0	0	0	0	0	0	1	0	1	0	1	6%	1	5%
Glare on Plate	0	0	0	0	0	0	0	0	1	0	0	0	1	6%	2	5%
Illegible Plate	5	1	0	2	0	1	3	1	0	2	0	4	2	15%	5	15%
Plate Obstructed	0	0	0	0	0	0	0	0	0	0	0	0	0	0%	1	0%
Windshield Glare	0	1	1	1	4	3	3	1	2	0	1	3	2	12%	2	8%
Driver Obstructed	1	0	2	0	3	1	4	2	1	0	0	1	2	12%	2	7%
Car Obstructed	0	0	0	0	0	0	0	0	1	1	0	0	1	6%	1	36%
No DMV Match Found	1	3	2	0	0	0	2	0	0	4	0	1	2	13%	2	7%
LASD Expired	0	0	0	0	0	0	0	0	0	0	0	0	0	0%	2	0%
LASD Return	1	3	4	3	2	2	3	4	3	8	0	1	3	19%	3	9%
Other	0	0	0	0	0	0	0	0	0	0	0	0	0	0%	0	0%
Total:	10	10	11	9	11	9	17	9	10	17	2	12	16	100%	22	100%
Controllable Non-Issued Violations																
Framing of Plate	0	0	0	1	0	0	0	0	0	0	0	0	1	11%	0	25%
Focus / Clarity of Plate	0	1	0	0	0	1	0	0	0	0	0	0	1	11%	0	25%
Dark Interior	0	0	0	0	0	0	0	0	0	0	0	1	1	11%	1	0%
Framing of Driver	0	0	0	0	0	0	0	0	0	0	0	0	0	0%	0	0%
Focus / Clarity of Driver	0	0	0	0	0	0	0	0	0	0	0	0	0	0%	0	0%
Framing of Car	0	0	0	0	0	0	0	0	0	0	0	0	0	0%	0	25%
Data/Operator Error	0	0	0	0	0	0	0	0	0	0	0	1	1	11%	0	0%
Exposure	2	5	2	1	5	5	1	12	3	2	0	0	4	43%	2	25%
Equipment Malfunction	0	0	0	0	0	0	0	0	1	0	0	0	1	11%	0	0%
ACS Expired	0	0	0	0	0	0	0	0	0	0	0	0	0	0%	0	0%
Total:	2	6	2	2	5	6	1	12	4	2	0	2	9	100%	3	100%
Summary Metrics																
Daily Average Vehicle Passes	565	469	639	500	490	642	716	557	537	651	538	456	Year to Date Monthly Average		2013 Monthly Average	
Average Issued Speed	18	17	0	17	19	15	0	18	18	23	0	21	563		560	
Average Issued Red Seconds	56.3	48.2	0	52.7	94.7	67.4	0	43.6	38.7	99.9	0	0.2	19		18	
Citation / Violation Issuance Rate	33%	6%	0%	35%	16%	6%	0%	13%	7%	5%	0%	7%	56		63.1	
Controllable Issuance Rate	75%	14%	0%	75%	38%	14%	0%	20%	20%	33%	0%	33%	14%		26%	
													36%		94%	



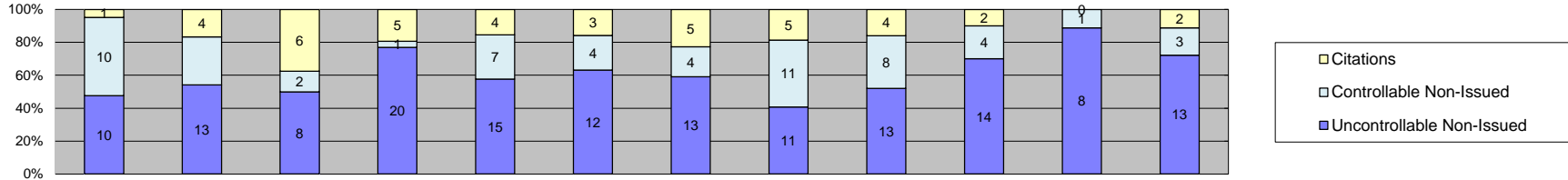
**Los Angeles County MTA Gold Line
Approach Summary Report
Location 4009: WB to SB 3rd @ La Verne**



Events	2014												Year to Date Monthly Average		2013 Monthly Average	
	Jan-14	Feb-14	Mar-14	Apr-14	May-14	Jun-14	Jul-14	Aug-14	Sep-14	Oct-14	Nov-14	Dec-14	Quantity	%	Quantity	%
Non-Violations	878	228	537	520	597	202	255	202	147	148	126	136	331	91%	227	90%
Violations	38	34	28	41	25	31	28	30	24	42	46	29	33	9%	31	10%
Total:	916	262	565	561	622	233	283	232	171	190	172	165	364	100%	259	100%
Violations																
Uncontrollable Non-Issued	21	20	20	28	20	19	18	17	16	34	33	19	22	67%	21	52%
Controllable Non-Issued	7	10	2	1	1	5	1	1	2	1	1	8	3	10%	5	17%
Citations	10	4	6	12	4	7	9	12	6	7	12	2	8	23%	7	32%
Total:	38	34	28	41	25	31	28	30	24	42	46	29	33	100%	33	100%
Non-Violations																
Rear Axle Violation	0	0	0	0	0	0	0	0	0	0	0	0	0	0%	1	0%
Emergency Vehicle	68	41	21	25	35	37	73	61	43	22	19	26	39	12%	62	23%
Right Turn	0	0	0	0	0	0	0	0	0	0	0	0	0	0%	0	0%
No Violation Occurred	810	187	516	495	562	165	182	141	104	126	107	110	292	88%	166	77%
Total:	878	228	537	520	597	202	255	202	147	148	126	136	331	100%	228	100%
Uncontrollable Non-Issued Violations																
No Plate	4	6	6	7	8	3	5	6	3	9	6	3	6	20%	5	17%
Out of State Plate	0	0	0	0	0	1	1	0	0	0	0	0	1	4%	1	5%
Glare on Plate	0	7	1	1	1	4	0	1	0	4	3	0	3	10%	0	5%
Illegible Plate	11	2	2	5	2	0	2	0	0	7	9	9	5	20%	4	11%
Plate Obstructed	0	0	1	0	0	0	1	0	1	2	0	0	1	5%	0	0%
Windshield Glare	1	0	0	2	0	0	0	1	0	0	1	0	1	5%	1	7%
Driver Obstructed	2	2	3	6	4	1	1	1	0	2	6	4	3	10%	4	6%
Car Obstructed	0	0	0	0	0	0	0	0	0	0	0	0	0	0%	1	11%
No DMV Match Found	0	2	5	3	2	7	7	4	5	9	8	2	5	18%	6	17%
LASD Expired	0	0	0	0	0	0	0	0	0	0	0	0	0	0%	2	9%
LASD Return	3	1	2	4	3	3	1	4	7	1	0	1	3	10%	2	12%
Other	0	0	0	0	0	0	0	0	0	0	0	0	0	0%	0	0%
Total:	21	20	20	28	20	19	18	17	16	34	33	19	28	100%	27	100%
Controllable Non-Issued Violations																
Framing of Plate	0	0	0	0	0	0	0	0	0	0	0	0	0	0%	0	0%
Focus / Clarity of Plate	0	9	0	1	0	1	0	0	0	0	0	1	3	27%	3	5%
Dark Interior	0	0	1	0	0	0	1	0	0	1	0	1	1	9%	1	7%
Framing of Driver	0	0	0	0	0	0	0	0	0	0	0	0	0	0%	4	11%
Focus / Clarity of Driver	0	0	0	0	0	0	0	0	0	0	0	3	3	27%	0	0%
Framing of Car	0	0	0	0	0	0	0	0	0	0	0	0	0	0%	0	0%
Data/Operator Error	0	0	0	0	0	0	0	0	0	0	0	1	1	9%	5	20%
Exposure	6	1	1	0	1	4	0	0	2	0	1	1	2	19%	1	8%
Equipment Malfunction	1	0	0	0	0	0	0	1	0	0	0	1	1	9%	2	49%
ACS Expired	0	0	0	0	0	0	0	0	0	0	0	0	0	0%	0	0%
Total:	7	10	2	1	1	5	1	1	2	1	1	8	11	100%	16	100%
Summary Metrics																
Daily Average Vehicle Passes	1,102	1,040	716	905	1,171	1,106	843	942	1,103	974	1,206	876	Year to Date Monthly Average		2013 Monthly Average	
Average Issued Speed	21	19	19	19	22	20	21	20	17	20	19	21	999	1,080		
Average Issued Red Seconds	20.7	16.5	30.3	30.6	25.5	13.5	18.0	38.1	36.8	14.1	44.4	0.2	20	20		
Citation / Violation Issuance Rate	26%	12%	21%	29%	16%	23%	32%	40%	25%	17%	26%	7%	24	18.4		
Controllable Issuance Rate	59%	29%	75%	92%	80%	58%	90%	92%	75%	88%	92%	20%	23%	24%		
													71%	77%		



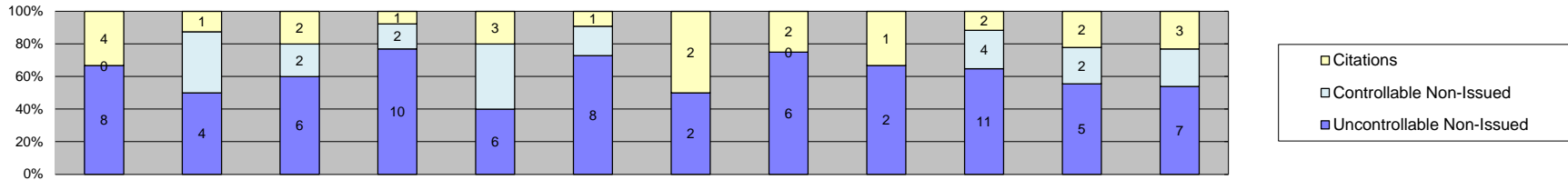
Los Angeles County MTA Gold Line
 Approach Summary Report
 Location 4017: EB to NB 3rd @ Mednick



Events	Year to Date Monthly Average												2013 Monthly Average				
	Jan-14	Feb-14	Mar-14	Apr-14	May-14	Jun-14	Jul-14	Aug-14	Sep-14	Oct-14	Nov-14	Dec-14	Quantity	%	Quantity	%	
Non-Violations	245	229	237	283	260	206	215	241	221	201	204	141	224	91%	254	89%	
Violations	21	24	16	26	26	19	22	27	25	20	9	18	21	9%	25	11%	
Total:	266	253	253	309	286	225	237	268	246	221	213	159	245	100%	279	100%	
Violations																	
Uncontrollable Non-Issued	10	13	8	20	15	12	13	11	13	14	8	13	13	58%	20	65%	
Controllable Non-Issued	10	7	2	1	7	4	4	11	8	4	1	3	5	24%	2	15%	
Citations	1	4	6	5	4	3	5	5	4	2	0	2	4	17%	4	20%	
Total:	21	24	16	26	26	19	22	27	25	20	9	18	21	100%	26	100%	
Non-Violations																	
Rear Axle Violation	0	0	0	0	0	0	0	0	0	0	0	0	0	0%	0	0%	
Emergency Vehicle	14	10	6	7	10	5	9	11	3	3	2	6	7	3%	15	6%	
Right Turn	0	0	0	0	0	0	0	0	0	0	0	0	0	0%	0	0%	
No Violation Occurred	231	219	231	276	250	201	206	230	218	198	202	135	216	97%	239	94%	
Total:	245	229	237	283	260	206	215	241	221	201	204	141	224	100%	254	100%	
Uncontrollable Non-Issued Violations																	
No Plate	2	3	1	2	1	2	1	1	1	1	0	1	1	8%	4	14%	
Out of State Plate	1	0	0	0	0	0	0	2	0	0	0	1	1	7%	2	3%	
Glare on Plate	0	0	0	2	1	1	0	0	0	0	1	0	1	7%	0	5%	
Illegible Plate	3	0	1	4	0	0	0	0	6	0	2	1	3	15%	4	15%	
Plate Obstructed	0	0	0	0	0	0	0	0	0	0	0	0	0	0%	0	3%	
Windshield Glare	1	2	0	4	3	5	6	5	1	3	2	3	3	17%	4	13%	
Driver Obstructed	0	0	2	3	1	1	1	0	2	0	0	0	2	9%	2	6%	
Car Obstructed	0	0	0	0	1	0	0	0	0	0	0	0	1	5%	1	13%	
No DMV Match Found	0	0	2	2	3	2	4	0	1	2	0	4	3	13%	2	10%	
LASD Expired	0	0	0	0	0	0	0	0	0	0	0	0	0	0%	1	6%	
LASD Return	3	8	2	3	5	1	1	3	2	8	3	3	4	19%	5	11%	
Other	0	0	0	0	0	0	0	0	0	0	0	0	0	0%	0	0%	
Total:	10	13	8	20	15	12	13	11	13	14	8	13	19	100%	24	100%	
Controllable Non-Issued Violations																	
Framing of Plate	0	0	0	0	0	0	0	0	0	0	0	0	0	0%	0	0%	
Focus / Clarity of Plate	0	2	1	0	0	0	0	0	0	1	0	1	1	9%	0	0%	
Dark Interior	5	3	0	0	1	3	0	0	0	0	0	2	3	20%	2	20%	
Framing of Driver	0	0	0	0	0	0	0	0	0	0	0	0	0	0%	0	0%	
Focus / Clarity of Driver	1	0	0	0	0	0	0	0	0	0	1	0	1	7%	0	0%	
Framing of Car	0	0	0	0	0	0	0	0	0	0	0	0	0	0%	0	0%	
Data/Operator Error	0	0	0	0	2	0	0	0	0	0	0	0	2	14%	0	0%	
Exposure	0	0	1	1	4	1	4	11	8	3	0	0	4	29%	3	0%	
Equipment Malfunction	4	2	0	0	0	0	0	0	0	0	0	0	3	21%	1	80%	
ACS Expired	0	0	0	0	0	0	0	0	0	0	0	0	0	0%	0	0%	
Total:	10	7	2	1	7	4	4	11	8	4	1	3	14	100%	6	100%	
Summary Metrics																	
Daily Average Vehicle Passes	1,232	934	1,165	1,041	939	1,130	1,261	1,198	1,103	845	804	844	Year to Date Monthly Average		2013 Monthly Average		
Average Issued Speed	22	25	23	25	28	21	26	24	27	27	0	26	1,041		1,121		
Average Issued Red Seconds	42.3	25.2	18.3	20.2	8.0	17.3	45.1	8.3	0.7	21.1	0	0.3	25		25		
Citation / Violation Issuance Rate	5%	17%	38%	19%	15%	16%	23%	19%	16%	10%	0%	11%	19		33.2		
Controllable Issuance Rate	9%	36%	75%	83%	36%	43%	56%	31%	33%	33%	0%	40%	17%		16%		
													43%		69%		



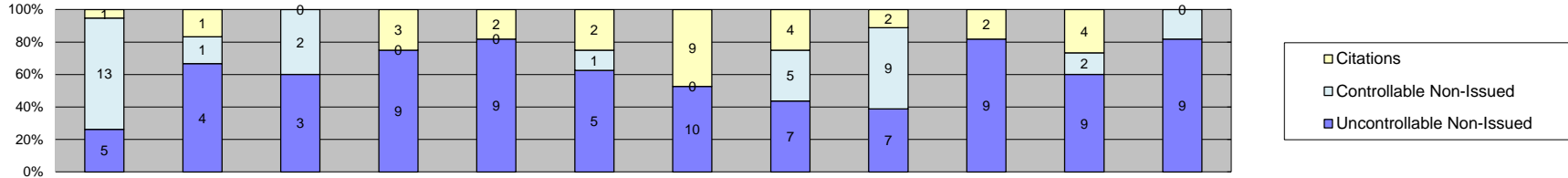
**Los Angeles County MTA Gold Line
Approach Summary Report
Location 4019: WB to SB 3rd @ Mednik**



Events	Jan-14	Feb-14	Mar-14	Apr-14	May-14	Jun-14	Jul-14	Aug-14	Sep-14	Oct-14	Nov-14	Dec-14	Year to Date Monthly Average		2013 Monthly Average	
													Quantity	%	Quantity	%
Non-Violations	288	240	400	296	235	272	261	259	253	208	224	226	264	96%	244	95%
Violations	12	8	10	13	15	11	4	8	3	17	9	13	10	4%	10	5%
Total:	300	248	410	309	250	283	265	267	256	225	233	239	274	100%	254	100%
Violations																
Uncontrollable Non-Issued	8	4	6	10	6	8	2	6	2	11	5	7	6	56%	8	78%
Controllable Non-Issued	0	3	2	2	6	2	0	0	0	4	2	3	3	27%	2	0%
Citations	4	1	2	1	3	1	2	2	1	2	2	3	2	18%	2	22%
Total:	12	8	10	13	15	11	4	8	3	17	9	13	11	100%	11	100%
Non-Violations																
Rear Axle Violation	0	0	0	0	0	0	0	0	0	0	0	0	0	0%	0	0%
Emergency Vehicle	30	18	20	15	8	19	28	31	20	4	4	11	17	7%	22	10%
Right Turn	0	0	0	0	0	0	0	0	0	0	0	0	0	0%	0	0%
No Violation Occurred	258	222	380	281	227	253	233	228	233	204	220	215	246	93%	222	90%
Total:	288	240	400	296	235	272	261	259	253	208	224	226	264	100%	244	100%
Uncontrollable Non-Issued Violations																
No Plate	2	0	0	2	2	0	0	0	1	1	1	3	2	10%	2	10%
Out of State Plate	0	0	0	0	0	0	0	0	0	0	1	0	1	6%	1	5%
Glare on Plate	0	0	1	1	0	2	0	0	0	0	1	0	1	7%	1	5%
Illegible Plate	3	1	3	2	0	0	1	0	0	0	0	1	2	11%	2	21%
Plate Obstructed	0	0	0	0	0	0	0	0	0	3	0	0	3	17%	0	5%
Windshield Glare	0	0	0	0	0	0	0	4	0	0	0	0	4	23%	1	5%
Driver Obstructed	1	1	1	1	1	0	0	0	1	1	1	0	1	6%	1	5%
Car Obstructed	0	0	0	0	0	0	0	0	0	0	0	0	0	0%	1	22%
No DMV Match Found	1	1	0	2	1	2	1	1	0	4	1	0	2	9%	2	8%
LASD Expired	0	0	0	0	0	0	0	0	0	0	0	0	0	0%	0	0%
LASD Return	1	1	1	2	2	4	0	1	0	2	0	3	2	11%	2	12%
Other	0	0	0	0	0	0	0	0	0	0	0	0	0	0%	0	0%
Total:	8	4	6	10	6	8	2	6	2	11	5	7	17	100%	14	100%
Controllable Non-Issued Violations																
Framing of Plate	0	0	0	0	0	0	0	0	0	0	0	0	0	0%	0	0
Focus / Clarity of Plate	0	0	0	0	0	0	0	0	0	1	0	0	1	13%	3	0
Dark Interior	0	1	2	1	1	2	0	0	0	3	2	1	2	21%	1	0
Framing of Driver	0	0	0	0	0	0	0	0	0	0	0	0	0	0%	0	0
Focus / Clarity of Driver	0	0	0	0	0	0	0	0	0	0	0	2	2	26%	0	0
Framing of Car	0	0	0	0	0	0	0	0	0	0	0	0	0	0%	0	0
Data/Operator Error	0	0	0	0	0	0	0	0	0	0	0	0	0	0%	0	0
Exposure	0	1	0	1	4	0	0	0	0	0	0	0	2	26%	1	0
Equipment Malfunction	0	1	0	0	1	0	0	0	0	0	0	0	1	13%	0	0
ACS Expired	0	0	0	0	0	0	0	0	0	0	0	0	0	0%	0	0
Total:	0	3	2	2	6	2	0	0	0	4	2	3	8	100%	5	0%
Summary Metrics																
Daily Average Vehicle Passes	714	612	589	746	621	701	791	941	702	780	871	780	Year to Date Monthly Average		2013 Monthly Average	
Average Issued Speed	26	24	30	17	27	25	29	25	25	29	29	25	737		724	
Average Issued Red Seconds	50.2	0.4	0.6	99.9	0.7	0.6	0.3	0.6	0.7	50.5	50.2	33.4	24		56.0	
Citation / Violation Issuance Rate	33%	13%	20%	8%	20%	9%	50%	25%	33%	12%	22%	23%	22%		22%	
Controllable Issuance Rate	100%	25%	50%	33%	33%	33%	100%	100%	100%	33%	50%	50%	59%		86%	



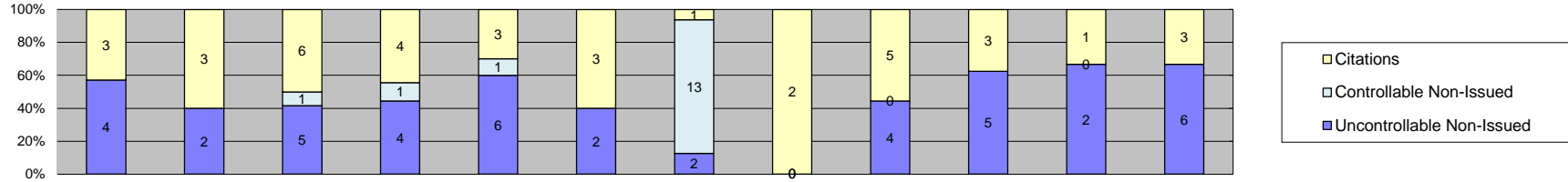
Los Angeles County MTA Gold Line
Approach Summary Report
Location 4027: EB to NB 3rd @ Arizona



Events	Jan-14	Feb-14	Mar-14	Apr-14	May-14	Jun-14	Jul-14	Aug-14	Sep-14	Oct-14	Nov-14	Dec-14	Year to Date Monthly Average		2013 Monthly Average	
													Quantity	%	Quantity	%
Non-Violations	487	447	436	524	537	503	562	477	353	486	541	596	496	98%	405	96%
Violations	19	6	5	12	11	8	19	16	18	11	15	11	13	2%	13	4%
Total:	506	453	441	536	548	511	581	493	371	497	556	607	508	100%	418	100%
Violations																
Uncontrollable Non-Issued	5	4	3	9	9	5	10	7	7	9	9	9	7	49%	7	43%
Controllable Non-Issued	13	1	2	0	0	1	0	5	9	0	2	2	4	30%	9	51%
Citations	1	1	0	3	2	2	9	4	2	2	4	0	3	21%	2	7%
Total:	19	6	5	12	11	8	19	16	18	11	15	11	15	100%	18	100%
Non-Violations																
Rear Axle Violation	0	0	0	0	0	0	0	0	0	0	0	0	0	0%	1	0%
Emergency Vehicle	5	1	2	3	2	1	3	3	3	1	1	1	2	0%	5	1%
Right Turn	0	0	0	0	0	0	0	0	0	0	0	1	1	0%	0	0%
No Violation Occurred	482	446	434	521	535	502	559	474	350	485	540	594	494	99%	401	99%
Total:	487	447	436	524	537	503	562	477	353	486	541	596	497	100%	407	100%
Uncontrollable Non-Issued Violations																
No Plate	2	1	0	1	2	0	1	0	1	3	2	1	2	12%	2	7%
Out of State Plate	0	0	0	0	0	0	0	1	0	0	1	0	1	8%	1	0%
Glare on Plate	0	1	0	0	0	1	0	0	0	0	1	0	1	8%	0	4%
Illegible Plate	0	0	1	1	0	0	0	0	0	0	1	1	1	8%	1	24%
Plate Obstructed	0	0	0	0	0	1	0	0	0	1	0	0	1	8%	0	10%
Windshield Glare	0	0	0	3	3	1	4	1	2	0	1	6	3	20%	1	5%
Driver Obstructed	1	1	1	1	0	0	3	2	0	1	0	0	1	11%	2	9%
Car Obstructed	0	0	0	0	0	0	0	0	0	0	0	0	0	0%	0	22%
No DMV Match Found	1	0	0	0	1	2	0	0	2	1	1	0	1	10%	1	6%
LASD Expired	0	0	0	0	0	0	0	0	0	0	0	0	0	0%	1	4%
LASD Return	1	1	1	3	3	0	2	3	2	3	2	1	2	15%	2	8%
Other	0	0	0	0	0	0	0	0	0	0	0	0	0	0%	0	0%
Total:	5	4	3	9	9	5	10	7	7	9	9	9	13	100%	11	100%
Controllable Non-Issued Violations																
Framing of Plate	0	0	0	0	0	0	0	0	0	0	0	0	0	0%	0	0%
Focus / Clarity of Plate	0	1	0	0	0	0	0	0	0	0	0	1	1	9%	0	0%
Dark Interior	0	0	0	0	0	0	0	0	0	0	0	0	0	0%	0	0%
Framing of Driver	0	0	0	0	0	0	0	0	0	0	0	0	0	0%	0	0%
Focus / Clarity of Driver	0	0	0	0	0	0	0	0	0	0	1	1	1	9%	0	0%
Framing of Car	0	0	0	0	0	0	0	0	0	0	0	0	0	0%	0	3%
Data/Operator Error	0	0	0	0	0	0	0	0	0	0	0	0	0	0%	1	0%
Exposure	1	0	2	0	0	1	0	0	8	0	1	0	3	25%	1	0%
Equipment Malfunction	12	0	0	0	0	0	0	5	1	0	0	0	6	57%	40	97%
ACS Expired	0	0	0	0	0	0	0	0	0	0	0	0	0	0%	0	0%
Total:	13	1	2	0	0	1	0	5	9	0	2	2	11	100%	42	100%
Summary Metrics																
Daily Average Vehicle Passes	496	511	556	400	497	610	469	528	504	555	534	620	Year to Date Monthly Average		2013 Monthly Average	
Average Issued Speed	20	14	0	19	23	20	18	20	20	23	18	0	523		594	
Average Issued Red Seconds	99.9	71.0	0	99.9	41.1	99.9	83.2	34.9	99.9	8.2	54.3	0	69		66.9	
Citation / Violation Issuance Rate	5%	17%	0%	25%	18%	25%	47%	25%	11%	18%	27%	0%	22%		23%	
Controllable Issuance Rate	7%	50%	0%	100%	100%	67%	100%	44%	18%	100%	67%	0%	65%		80%	



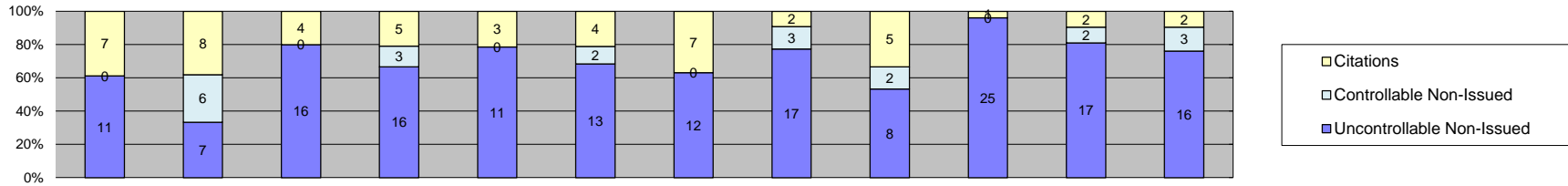
Los Angeles County MTA Gold Line
 Approach Summary Report
 Location 4029: WB to SB 3rd @ Arizona



Events	2014												Year to Date Monthly Average		2013 Monthly Average	
	Jan-14	Feb-14	Mar-14	Apr-14	May-14	Jun-14	Jul-14	Aug-14	Sep-14	Oct-14	Nov-14	Dec-14	Quantity	%	Quantity	%
Non-Violations	179	157	240	217	222	200	105	162	180	149	144	158	176	96%	168	93%
Violations	7	5	12	9	10	5	16	2	9	8	3	9	8	4%	7	7%
Total:	186	162	252	226	232	205	121	164	189	157	147	167	184	100%	175	100%
Violations																
Uncontrollable Non-Issued	4	2	5	4	6	2	2	0	4	5	2	6	4	35%	4	60%
Controllable Non-Issued	0	0	1	1	1	0	13	0	0	0	0	0	4	37%	4	27%
Citations	3	3	6	4	3	3	1	2	5	3	1	3	3	28%	2	13%
Total:	7	5	12	9	10	5	16	2	9	8	3	9	11	100%	10	100%
Non-Violations																
Rear Axle Violation	0	1	0	0	0	0	0	0	0	0	0	0	1	1%	1	1%
Emergency Vehicle	19	4	4	3	6	3	7	9	9	4	3	3	6	3%	8	4%
Right Turn	0	0	0	0	0	0	0	0	0	0	0	0	0	0%	1	0%
No Violation Occurred	160	152	236	214	216	197	98	153	171	145	141	155	170	96%	160	95%
Total:	179	157	240	217	222	200	105	162	180	149	144	158	177	100%	170	100%
Uncontrollable Non-Issued Violations																
No Plate	2	0	2	1	1	1	2	0	0	3	0	3	2	21%	2	9%
Out of State Plate	0	0	0	0	0	0	0	0	0	0	0	0	0	0%	0	5%
Glare on Plate	0	0	0	0	1	0	0	0	0	0	0	0	1	11%	0	21%
Illegible Plate	1	0	1	0	0	0	0	0	0	0	0	0	1	11%	2	27%
Plate Obstructed	0	0	1	0	0	0	0	0	1	0	0	0	1	11%	0	0%
Windshield Glare	0	0	0	0	0	0	0	0	0	0	0	0	0	0%	1	5%
Driver Obstructed	0	1	0	0	1	0	0	0	0	0	0	0	1	11%	2	5%
Car Obstructed	0	0	0	0	0	0	0	0	0	0	0	0	0	0%	0	9%
No DMV Match Found	1	0	1	2	0	1	0	0	1	2	1	1	1	14%	1	8%
LASD Expired	0	0	0	0	0	0	0	0	0	0	0	0	0	0%	0	7%
LASD Return	0	1	0	1	3	0	0	0	2	0	1	2	2	19%	1	6%
Other	0	0	0	0	0	0	0	0	0	0	0	0	0	0%	0	0%
Total:	4	2	5	4	6	2	2	0	4	5	2	6	9	100%	8	100%
Controllable Non-Issued Violations																
Framing of Plate	0	0	0	0	0	0	0	0	0	0	0	0	0	0%	0	0%
Focus / Clarity of Plate	0	0	0	0	0	0	0	0	0	0	0	0	0	0%	0	0%
Dark Interior	0	0	0	1	0	0	0	0	0	0	0	0	1	7%	0	0%
Framing of Driver	0	0	0	0	0	0	0	0	0	0	0	0	0	0%	0	0%
Focus / Clarity of Driver	0	0	0	0	0	0	0	0	0	0	0	0	0	0%	0	0%
Framing of Car	0	0	0	0	0	0	0	0	0	0	0	0	0	0%	0	0%
Data/Operator Error	0	0	0	0	0	0	0	0	0	0	0	0	0	0%	0	0%
Exposure	0	0	1	0	1	0	0	0	0	0	0	0	1	7%	4	11%
Equipment Malfunction	0	0	0	0	0	0	13	0	0	0	0	0	13	87%	0	89%
ACS Expired	0	0	0	0	0	0	0	0	0	0	0	0	0	0%	0	0%
Total:	0	0	1	1	1	0	13	0	0	0	0	0	15	100%	4	100%
Summary Metrics																
Daily Average Vehicle Passes	526	430	622	467	558	444	529	619	512	593	407	621	Year to Date Monthly Average		2013 Monthly Average	
Average Issued Speed	17	17	17	19	17	18	19	19	20	17	18	17	527		536	
Average Issued Red Seconds	15.4	99.9	63.5	99.9	63.4	76.4	99.9	98.3	20.2	91.4	99.9	66.7	18		18	
Citation / Violation Issuance Rate	43%	60%	50%	44%	30%	60%	6%	100%	56%	38%	33%	33%	75		46.3	
Controllable Issuance Rate	100%	100%	86%	80%	75%	100%	7%	100%	100%	100%	100%	100%	46%		37%	
													87%		91%	



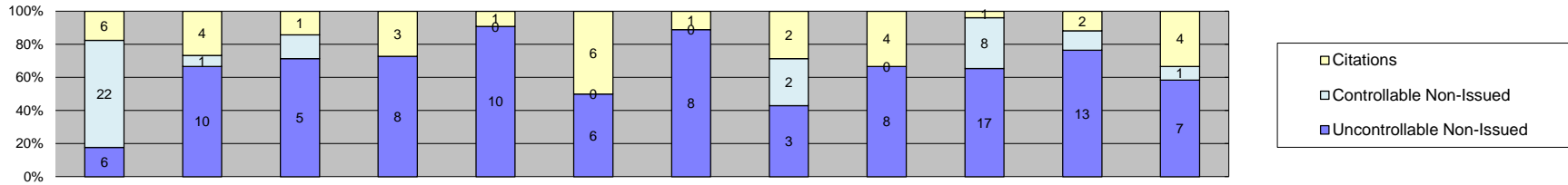
Los Angeles County MTA Gold Line
 Approach Summary Report
 Location 4037: EB to NB 3rd @ McDonnell



Events	Jan-14	Feb-14	Mar-14	Apr-14	May-14	Jun-14	Jul-14	Aug-14	Sep-14	Oct-14	Nov-14	Dec-14	Year to Date Monthly Average		2013 Monthly Average	
													Quantity	%	Quantity	%
Non-Violations	648	536	646	633	658	645	718	758	711	659	595	605	651	97%	522	93%
Violations	18	21	20	24	14	19	19	22	15	26	21	21	20	3%	17	7%
Total:	666	557	666	657	672	664	737	780	726	685	616	626	671	100%	539	100%
Violations																
Uncontrollable Non-Issued	11	7	16	16	11	13	12	17	8	25	17	16	14	66%	11	28%
Controllable Non-Issued	0	6	0	3	0	2	0	3	2	0	2	3	3	14%	3	64%
Citations	7	8	4	5	3	4	7	2	5	1	2	2	4	20%	5	8%
Total:	18	21	20	24	14	19	19	22	15	26	21	21	21	100%	18	100%
Non-Violations																
Rear Axle Violation	0	0	0	0	0	0	0	0	0	0	0	0	0	0%	0	0%
Emergency Vehicle	1	4	3	0	0	2	2	3	5	3	3	2	3	0%	4	1%
Right Turn	0	0	0	0	0	0	0	0	0	0	0	0	0	0%	0	0%
No Violation Occurred	647	532	643	633	658	643	716	755	706	656	592	603	649	100%	519	99%
Total:	648	536	646	633	658	645	718	758	711	659	595	605	651	100%	523	100%
Uncontrollable Non-Issued Violations																
No Plate	3	4	6	3	3	4	2	6	2	4	7	6	4	19%	2	12%
Out of State Plate	0	1	0	1	1	0	1	0	0	1	0	0	1	5%	1	0%
Glare on Plate	0	0	0	0	0	0	0	0	0	2	0	0	2	9%	0	4%
Illegible Plate	2	0	1	1	1	1	0	0	0	1	4	3	2	8%	2	19%
Plate Obstructed	0	0	0	1	0	0	1	0	0	0	0	0	1	5%	0	0%
Windshield Glare	0	0	0	1	1	0	2	0	3	4	0	1	2	9%	2	6%
Driver Obstructed	2	1	1	1	0	0	2	2	0	2	0	0	2	7%	1	6%
Car Obstructed	0	0	2	0	0	0	0	0	0	0	0	0	2	9%	1	23%
No DMV Match Found	2	0	3	4	1	6	1	3	1	5	1	1	3	12%	2	11%
LASD Expired	0	0	0	0	0	0	0	0	0	0	0	0	0	0%	1	9%
LASD Return	2	1	3	4	4	2	3	6	2	6	5	5	4	17%	4	9%
Other	0	0	0	0	0	0	0	0	0	0	0	0	0	0%	0	0%
Total:	11	7	16	16	11	13	12	17	8	25	17	16	22	100%	16	100%
Controllable Non-Issued Violations																
Framing of Plate	0	0	0	1	0	0	0	1	1	0	0	0	1	14%	0	0%
Focus / Clarity of Plate	0	3	0	0	0	0	0	0	0	0	1	1	2	24%	0	0%
Dark Interior	0	1	0	1	0	0	0	0	1	0	0	0	1	14%	2	2%
Framing of Driver	0	0	0	0	0	0	0	0	0	0	0	0	0	0%	0	0%
Focus / Clarity of Driver	0	0	0	0	0	0	0	0	0	0	1	2	2	22%	0	0%
Framing of Car	0	0	0	0	0	0	0	0	0	0	0	0	0	0%	0	0%
Data/Operator Error	0	0	0	0	0	0	0	0	0	0	0	0	0	0%	2	0%
Exposure	0	2	0	1	0	2	0	2	0	0	0	0	2	25%	1	0%
Equipment Malfunction	0	0	0	0	0	0	0	0	0	0	0	0	0	0%	2	98%
ACS Expired	0	0	0	0	0	0	0	0	0	0	0	0	0	0%	0	0%
Total:	0	6	0	3	0	2	0	3	2	0	2	3	7	100%	6	100%
Summary Metrics																
Daily Average Vehicle Passes	714	1,039	909	797	745	846	716	883	787	686	770	622	Year to Date Monthly Average		2013 Monthly Average	
Average Issued Speed	19	20	17	18	20	18	17	19	16	18	18	18	793		832	
Average Issued Red Seconds	61.0	27.7	48.4	40.9	3.2	57.9	47.9	89.1	82.2	0.1	50.1	53.3	47		38.4	
Citation / Violation Issuance Rate	39%	38%	20%	21%	21%	21%	37%	9%	33%	4%	10%	10%	22%		30%	
Controllable Issuance Rate	100%	57%	100%	63%	100%	67%	100%	40%	71%	100%	50%	40%	74%		83%	



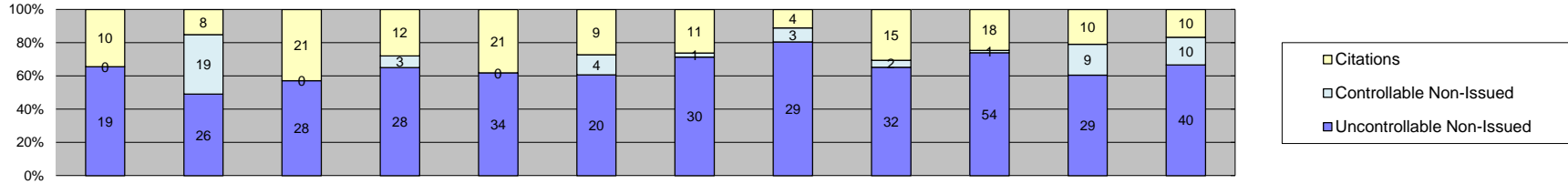
Los Angeles County MTA Gold Line
 Approach Summary Report
 Location 4039: WB to SB 3rd @ McDonnell



Events	Year to Date Monthly Average												2013 Monthly Average			
	Jan-14	Feb-14	Mar-14	Apr-14	May-14	Jun-14	Jul-14	Aug-14	Sep-14	Oct-14	Nov-14	Dec-14	Quantity	%	Quantity	%
Non-Violations	231	252	278	264	286	255	298	267	258	285	277	265	268	95%	269	95%
Violations	34	15	7	11	11	12	9	7	12	26	17	12	14	5%	12	5%
Total:	265	267	285	275	297	267	307	274	270	311	294	277	282	100%	280	100%
Violations																
Uncontrollable Non-Issued	6	10	5	8	10	6	8	3	8	17	13	7	8	51%	8	69%
Controllable Non-Issued	22	1	1	0	0	0	0	2	0	8	2	1	5	32%	1	9%
Citations	6	4	1	3	1	6	1	2	4	1	2	4	3	18%	3	22%
Total:	34	15	7	11	11	12	9	7	12	26	17	12	17	100%	13	100%
Non-Violations																
Rear Axle Violation	0	0	0	0	0	0	0	0	0	0	0	0	0	0%	0	0%
Emergency Vehicle	6	5	1	1	7	2	4	7	9	8	3	3	5	2%	6	3%
Right Turn	0	0	0	0	0	0	0	0	0	0	0	0	0	0%	0	0%
No Violation Occurred	225	247	277	263	279	253	294	260	249	277	274	262	263	98%	263	97%
Total:	231	252	278	264	286	255	298	267	258	285	277	265	268	100%	269	100%
Uncontrollable Non-Issued Violations																
No Plate	0	4	0	1	1	1	2	1	1	1	4	1	2	12%	1	8%
Out of State Plate	0	0	0	0	0	0	0	0	0	0	1	0	1	7%	1	5%
Glare on Plate	0	0	1	0	1	1	0	0	0	2	0	0	1	9%	1	12%
Illegible Plate	4	2	0	3	4	1	3	0	2	5	3	2	3	20%	3	19%
Plate Obstructed	0	0	0	0	0	0	0	0	0	1	0	0	1	7%	1	5%
Windshield Glare	0	0	0	0	1	0	0	0	1	0	0	1	1	7%	1	5%
Driver Obstructed	0	1	2	1	1	1	0	1	1	1	1	0	1	8%	2	6%
Car Obstructed	0	0	0	1	0	0	0	0	1	0	0	0	1	7%	0	19%
No DMV Match Found	1	1	2	0	1	2	2	0	1	4	3	2	2	13%	3	8%
LASD Expired	0	0	0	0	0	0	0	0	0	0	0	0	0	0%	0	7%
LASD Return	1	2	0	2	1	0	1	1	1	3	1	1	1	10%	2	7%
Other	0	0	0	0	0	0	0	0	0	0	0	0	0	0%	0	0%
Total:	6	10	5	8	10	6	8	3	8	17	13	7	14	100%	15	100%
Controllable Non-Issued Violations																
Framing of Plate	0	0	1	0	0	0	0	0	0	0	0	0	1	3%	0	33%
Focus / Clarity of Plate	0	1	0	0	0	0	0	0	0	0	1	0	1	3%	0	0%
Dark Interior	0	0	0	0	0	0	0	0	0	1	0	0	1	3%	1	0%
Framing of Driver	0	0	0	0	0	0	0	0	0	0	0	0	0	0%	1	0%
Focus / Clarity of Driver	0	0	0	0	0	0	0	0	0	0	1	0	1	3%	0	0%
Framing of Car	0	0	0	0	0	0	0	0	0	7	0	0	7	20%	0	0%
Data/Operator Error	0	0	0	0	0	0	0	0	0	0	0	0	0	0%	0	0%
Exposure	0	0	0	0	0	0	0	2	0	0	1	0	2	4%	1	67%
Equipment Malfunction	22	0	0	0	0	0	0	0	0	0	0	0	22	64%	0	0%
ACS Expired	0	0	0	0	0	0	0	0	0	0	0	0	0	0%	0	0%
Total:	22	1	1	0	0	0	0	2	0	8	2	1	35	100%	3	100%
Summary Metrics																
Daily Average Vehicle Passes	528	689	460	511	400	576	558	622	710	471	376	436	Year to Date Monthly Average		2013 Monthly Average	
Average Issued Speed	19	23	18	16	25	21	21	20	18	20	19	20	528		566	
Average Issued Red Seconds	43.6	25.3	99.9	83.0	99.9	66.9	64.6	99.9	60.5	99.9	50.1	94.2	20		18	
Citation / Violation Issuance Rate	18%	27%	14%	27%	9%	50%	11%	29%	33%	4%	12%	33%	74		65.2	
Controllable Issuance Rate	21%	80%	50%	100%	100%	100%	100%	50%	100%	11%	50%	80%	22%		29%	
													70%		95%	



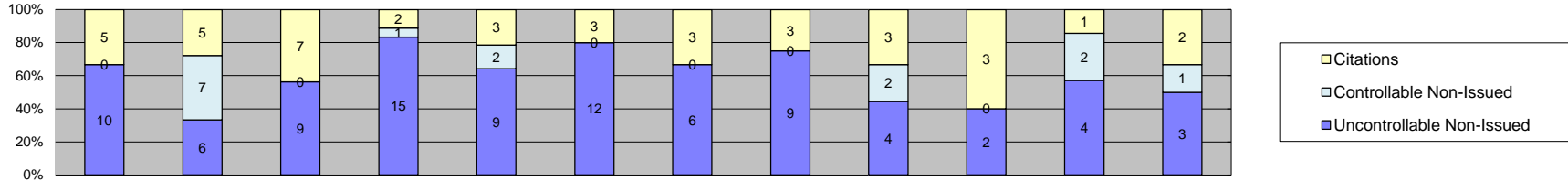
Los Angeles County MTA Gold Line
 Approach Summary Report
 Location 4047: EB to NB 3rd @ Ford



Events	Jan-14	Feb-14	Mar-14	Apr-14	May-14	Jun-14	Jul-14	Aug-14	Sep-14	Oct-14	Nov-14	Dec-14	Year to Date Monthly Average		2013 Monthly Average	
													Quantity	%	Quantity	%
Non-Violations	407	371	434	397	442	409	486	493	441	388	391	352	418	90%	405	92%
Violations	29	53	49	43	55	33	42	36	49	73	48	60	48	10%	55	8%
Total:	436	424	483	440	497	442	528	529	490	461	439	412	465	100%	460	100%
Violations																
Uncontrollable Non-Issued	19	26	28	28	34	20	30	29	32	54	29	40	31	63%	39	73%
Controllable Non-Issued	0	19	0	3	0	4	1	3	2	1	9	10	6	12%	2	4%
Citations	10	8	21	12	21	9	11	4	15	18	10	10	12	25%	15	23%
Total:	29	53	49	43	55	33	42	36	49	73	48	60	49	100%	55	100%
Non-Violations																
Rear Axle Violation	0	0	0	0	0	0	0	0	0	0	0	0	0	0%	2	0%
Emergency Vehicle	6	7	8	2	2	0	8	3	5	1	4	6	5	1%	6	2%
Right Turn	0	0	0	0	0	0	0	0	0	0	0	0	0	0%	0	0%
No Violation Occurred	401	364	426	395	440	409	478	490	436	387	387	346	413	99%	399	98%
Total:	407	371	434	397	442	409	486	493	441	388	391	352	418	100%	407	100%
Uncontrollable Non-Issued Violations																
No Plate	1	7	8	2	5	6	3	5	7	7	3	7	5	14%	5	10%
Out of State Plate	0	0	0	1	0	0	0	1	0	2	0	0	1	4%	1	3%
Glare on Plate	1	2	0	3	2	3	3	0	0	4	2	0	3	7%	4	7%
Illegible Plate	14	2	1	3	6	1	7	4	6	8	5	10	6	16%	10	18%
Plate Obstructed	1	0	0	2	0	0	0	0	1	5	3	1	2	6%	1	3%
Windshield Glare	1	2	7	6	10	3	3	8	4	2	4	1	4	12%	6	6%
Driver Obstructed	0	3	2	1	3	2	4	1	1	4	0	3	2	7%	5	4%
Car Obstructed	0	0	0	0	1	0	2	1	1	4	0	0	2	5%	3	16%
No DMV Match Found	0	2	2	4	2	3	5	4	3	8	6	2	4	11%	5	7%
LASD Expired	0	0	0	0	0	0	0	0	0	0	0	0	0	0%	2	14%
LASD Return	1	8	8	6	5	2	3	5	9	10	6	16	7	19%	7	12%
Other	0	0	0	0	0	0	0	0	0	0	0	0	0	0%	0	0%
Total:	19	26	28	28	34	20	30	29	32	54	29	40	35	100%	47	100%
Controllable Non-Issued Violations																
Framing of Plate	0	0	0	0	0	0	0	0	0	0	0	0	0	0%	0	17%
Focus / Clarity of Plate	0	3	0	0	0	2	0	0	0	0	0	1	2	13%	1	17%
Dark Interior	0	1	0	3	0	2	1	0	1	1	1	3	2	11%	1	17%
Framing of Driver	0	0	0	0	0	0	0	0	0	0	0	0	0	0%	1	17%
Focus / Clarity of Driver	0	0	0	0	0	0	0	0	0	0	8	5	7	43%	0	0%
Framing of Car	0	0	0	0	0	0	0	0	0	0	0	0	0	0%	1	0%
Data/Operator Error	0	0	0	0	0	0	0	0	0	0	0	0	0	0%	0	0%
Exposure	0	15	0	0	0	0	0	3	1	0	0	1	5	33%	1	17%
Equipment Malfunction	0	0	0	0	0	0	0	0	0	0	0	0	0	0%	0	0%
ACS Expired	0	0	0	0	0	0	0	0	0	0	0	0	0	0%	0	17%
Total:	0	19	0	3	0	4	1	3	2	1	9	10	15	100%	5	100%
Summary Metrics																
Daily Average Vehicle Passes	1,268	1,259	1,134	1,272	1,001	973	1,264	1,414	909	812	1,273	874	Year to Date Monthly Average		2013 Monthly Average	
Average Issued Speed	22	21	20	21	21	20	20	24	21	20	20	20	1,121		1,225	
Average Issued Red Seconds	10.2	19.9	2.1	13.9	15.0	18.8	14.2	1.0	7.4	4.7	14.8	0.9	10		15.3	
Citation / Violation Issuance Rate	34%	15%	43%	28%	38%	27%	26%	11%	31%	25%	21%	17%	26%		30%	
Controllable Issuance Rate	100%	30%	100%	80%	100%	69%	92%	57%	88%	95%	53%	50%	76%		94%	



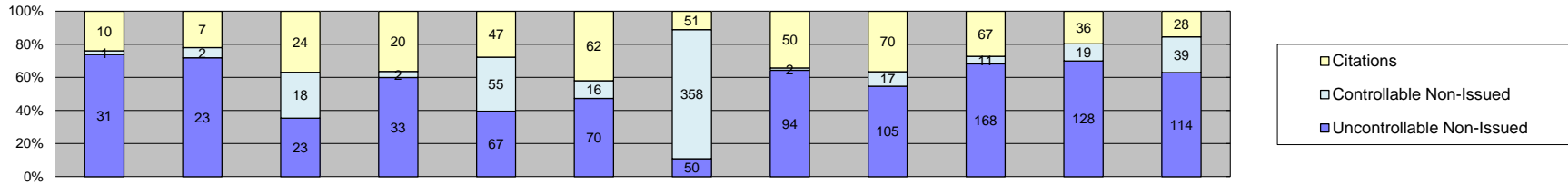
Los Angeles County MTA Gold Line
Approach Summary Report
Location 4049: WB to SB 3rd @ Ford



Events	2014												Year to Date Monthly Average		2013 Monthly Average	
	Jan-14	Feb-14	Mar-14	Apr-14	May-14	Jun-14	Jul-14	Aug-14	Sep-14	Oct-14	Nov-14	Dec-14	Quantity	%	Quantity	%
Non-Violations	158	191	203	168	195	160	184	221	280	100	185	202	187	94%	177	90%
Violations	15	18	16	18	14	15	9	12	9	5	7	6	12	6%	18	10%
Total:	173	209	219	186	209	175	193	233	289	105	192	208	199	100%	194	100%
Violations																
Uncontrollable Non-Issued	10	6	9	15	9	12	6	9	4	2	4	3	7	56%	15	71%
Controllable Non-Issued	0	7	0	1	2	0	0	0	2	0	2	1	3	19%	3	18%
Citations	5	5	7	2	3	3	3	3	3	3	1	2	3	25%	2	11%
Total:	15	18	16	18	14	15	9	12	9	5	7	6	13	100%	19	100%
Non-Violations																
Rear Axle Violation	0	0	0	0	0	0	0	0	0	0	0	0	0	0%	1	1%
Emergency Vehicle	15	19	10	16	12	1	18	21	8	3	4	6	11	6%	17	8%
Right Turn	0	0	0	0	0	0	0	0	0	0	0	0	0	0%	0	0%
No Violation Occurred	143	172	193	152	183	159	166	200	272	97	181	196	176	94%	160	91%
Total:	158	191	203	168	195	160	184	221	280	100	185	202	187	100%	178	100%
Uncontrollable Non-Issued Violations																
No Plate	2	0	1	1	2	4	1	3	1	0	1	0	2	14%	2	10%
Out of State Plate	0	0	0	0	0	0	0	0	0	0	0	1	1	8%	0	4%
Glare on Plate	0	1	0	3	1	2	0	0	0	0	0	0	2	14%	1	10%
Illegible Plate	5	2	1	4	1	1	3	1	1	0	1	0	2	16%	8	28%
Plate Obstructed	0	0	0	0	0	0	0	0	0	0	0	0	0	0%	0	8%
Windshield Glare	1	0	0	1	0	1	1	1	0	0	0	0	1	8%	4	6%
Driver Obstructed	1	0	1	0	0	1	0	1	0	1	0	0	1	8%	2	5%
Car Obstructed	0	0	1	0	0	0	0	1	0	0	0	0	1	8%	2	11%
No DMV Match Found	0	1	3	1	1	1	0	1	1	1	0	1	1	10%	1	5%
LASD Expired	0	0	0	0	0	0	0	0	0	0	0	0	0	0%	0	0%
LASD Return	1	2	2	5	4	2	1	1	1	0	2	1	2	16%	2	12%
Other	0	0	0	0	0	0	0	0	0	0	0	0	0	0%	0	0%
Total:	10	6	9	15	9	12	6	9	4	2	4	3	13	100%	22	100%
Controllable Non-Issued Violations																
Framing of Plate	0	0	0	0	0	0	0	0	0	0	0	0	0	0%	0	0%
Focus / Clarity of Plate	0	3	0	0	0	0	0	0	0	0	0	0	3	39%	2	22%
Dark Interior	0	1	0	0	0	0	0	0	0	0	1	0	1	13%	0	0%
Framing of Driver	0	0	0	0	0	0	0	0	0	0	0	0	0	0%	1	0%
Focus / Clarity of Driver	0	0	0	0	0	0	0	0	0	0	0	1	1	13%	1	9%
Framing of Car	0	0	0	0	0	0	0	0	0	0	0	0	0	0%	0	9%
Data/Operator Error	0	0	0	0	0	0	0	0	0	0	0	0	0	0%	0	0%
Exposure	0	3	0	0	1	0	0	0	2	0	1	0	2	23%	4	61%
Equipment Malfunction	0	0	0	1	1	0	0	0	0	0	0	0	1	13%	0	0%
ACS Expired	0	0	0	0	0	0	0	0	0	0	0	0	0	0%	0	0%
Total:	0	7	0	1	2	0	0	0	2	0	2	1	8	100%	8	100%
Summary Metrics																
Daily Average Vehicle Passes	908	906	779	1,030	830	1,300	1,036	769	979	1,095	979	847	Year to Date Monthly Average		2013 Monthly Average	
Average Issued Speed	25	23	25	22	22	21	23	20	21	26	20	20	955		924	
Average Issued Red Seconds	20.4	29.4	12.0	0.2	66.6	33.5	33.5	66.6	0.4	0.3	59.2	40.5	22		21	
Citation / Violation Issuance Rate	33%	28%	44%	11%	21%	20%	33%	25%	33%	60%	14%	33%	30		42.0	
Controllable Issuance Rate	100%	42%	100%	67%	60%	100%	100%	100%	60%	100%	33%	67%	77%		71%	



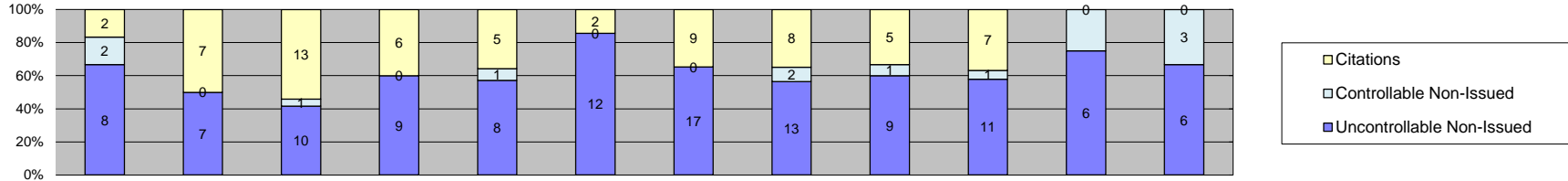
Los Angeles County MTA Gold Line
Approach Summary Report
Location 4057: EB to NB 3rd @ Eastern



Events	2014												Year to Date Monthly Average		2013 Monthly Average	
	Jan-14	Feb-14	Mar-14	Apr-14	May-14	Jun-14	Jul-14	Aug-14	Sep-14	Oct-14	Nov-14	Dec-14	Quantity	%	Quantity	%
Non-Violations	76	129	87	65	83	95	105	104	116	116	122	113	101	39%	95	68%
Violations	42	32	65	55	169	148	459	146	192	246	183	181	160	61%	42	32%
Total:	118	161	152	120	252	243	564	250	308	362	305	294	261	100%	137	100%
Violations																
Uncontrollable Non-Issued	31	23	23	33	67	70	50	94	105	168	128	114	76	47%	23	50%
Controllable Non-Issued	1	2	18	2	55	16	358	2	17	11	19	39	45	28%	3	7%
Citations	10	7	24	20	47	62	51	50	70	67	36	28	39	25%	18	43%
Total:	42	32	65	55	169	148	459	146	192	246	183	181	160	100%	44	100%
Non-Violations																
Rear Axle Violation	0	0	0	0	0	0	0	0	0	0	0	0	0	0%	1	1%
Emergency Vehicle	1	6	2	0	3	3	8	5	8	8	4	7	5	5%	5	7%
Right Turn	0	0	0	0	0	0	0	0	0	0	0	0	0	0%	0	0%
No Violation Occurred	75	123	85	65	80	92	97	99	108	108	118	106	96	95%	90	92%
Total:	76	129	87	65	83	95	105	104	116	116	122	113	101	100%	95	100%
Uncontrollable Non-Issued Violations																
No Plate	6	5	4	6	5	10	5	9	16	23	12	20	10	13%	3	10%
Out of State Plate	2	0	1	0	0	1	1	0	3	0	2	2	2	2%	1	3%
Glare on Plate	0	0	0	0	1	6	0	1	0	5	3	0	3	4%	1	4%
Illegible Plate	9	1	2	2	6	8	6	11	12	15	15	9	8	10%	3	14%
Plate Obstructed	0	0	0	1	0	1	1	1	1	2	2	0	1	2%	1	3%
Windshield Glare	2	3	3	7	13	6	11	20	17	19	23	12	11	14%	2	8%
Driver Obstructed	0	1	2	0	1	3	3	2	7	7	0	1	3	4%	2	6%
Car Obstructed	0	0	0	0	1	0	1	1	1	3	0	1	1	2%	1	7%
No DMV Match Found	8	6	2	5	15	23	12	20	19	33	29	21	16	20%	7	21%
LASD Expired	0	0	0	0	0	0	0	0	0	0	0	0	0	0%	2	7%
LASD Return	4	7	9	12	25	12	10	29	29	61	42	48	24	30%	6	15%
Other	0	0	0	0	0	0	0	0	0	0	0	0	0	0%	0	0%
Total:	31	23	23	33	67	70	50	94	105	168	128	114	80	100%	29	100%
Controllable Non-Issued Violations																
Framing of Plate	0	0	0	0	2	0	0	1	0	0	0	0	2	1%	1	42%
Focus / Clarity of Plate	0	1	0	0	0	2	0	0	0	0	0	3	2	1%	1	21%
Dark Interior	1	1	0	0	0	1	0	0	0	8	4	9	4	3%	1	14%
Framing of Driver	0	0	0	0	0	0	0	0	0	0	0	0	0	0%	0	0%
Focus / Clarity of Driver	0	0	0	0	0	0	0	0	0	0	11	27	19	14%	0	0%
Framing of Car	0	0	0	0	0	0	0	0	0	0	0	0	0	0%	1	0%
Data/Operator Error	0	0	1	0	0	0	0	0	0	0	0	0	1	1%	10	0%
Exposure	0	0	1	2	1	13	1	1	6	3	4	0	4	3%	1	23%
Equipment Malfunction	0	0	16	0	52	0	357	0	11	0	0	0	109	78%	1	0%
ACS Expired	0	0	0	0	0	0	0	0	0	0	0	0	0	0%	0	0%
Total:	1	2	18	2	55	16	358	2	17	11	19	39	140	100%	16	100%
Summary Metrics																
Daily Average Vehicle Passes	1,296	1,143	1,134	973	974	872	1,264	1,166	1,004	943	1,430	651	Year to Date Monthly Average		2013 Monthly Average	
Average Issued Speed	24	21	24	24	22	22	22	22	21	21	22	22	1,071		1,273	
Average Issued Red Seconds	22.6	0.4	1.5	4.0	0.9	0.8	0.6	1.3	2.0	0.6	1.2	1.8	3		6.1	
Citation / Violation Issuance Rate	24%	22%	37%	36%	28%	42%	11%	34%	36%	27%	20%	15%	28%		43%	
Controllable Issuance Rate	91%	78%	57%	91%	46%	79%	12%	96%	80%	86%	65%	42%	69%		95%	



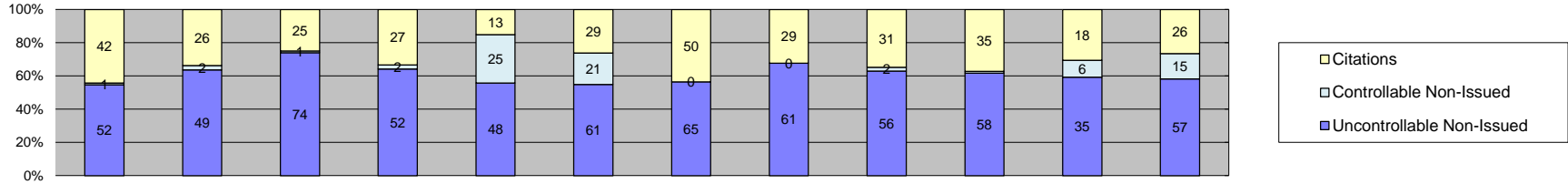
Los Angeles County MTA Gold Line
 Approach Summary Report
 Location 4059: WB to SB 3rd @ Eastern



Events	2014												Year to Date Monthly Average		2013 Monthly Average	
	Jan-14	Feb-14	Mar-14	Apr-14	May-14	Jun-14	Jul-14	Aug-14	Sep-14	Oct-14	Nov-14	Dec-14	Quantity	%	Quantity	%
Non-Violations	112	100	130	104	106	104	125	98	116	100	127	99	110	87%	92	88%
Violations	12	14	24	15	14	14	26	23	15	19	8	9	16	13%	23	12%
Total:	124	114	154	119	120	118	151	121	131	119	135	108	126	100%	114	100%
Violations																
Uncontrollable Non-Issued	8	7	10	9	8	12	17	13	9	11	6	6	10	55%	13	58%
Controllable Non-Issued	2	0	1	0	1	0	0	2	1	1	2	3	2	9%	4	12%
Citations	2	7	13	6	5	2	9	8	5	7	0	0	6	36%	8	30%
Total:	12	14	24	15	14	14	26	23	15	19	8	9	18	100%	26	100%
Non-Violations																
Rear Axle Violation	0	0	0	0	0	0	0	0	0	0	0	0	0	0%	1	1%
Emergency Vehicle	26	20	23	16	20	19	27	21	15	15	12	17	19	17%	19	20%
Right Turn	0	0	0	0	0	0	0	0	0	0	0	0	0	0%	0	0%
No Violation Occurred	86	80	107	88	86	85	98	77	101	85	115	82	91	83%	72	79%
Total:	112	100	130	104	106	104	125	98	116	100	127	99	110	100%	93	100%
Uncontrollable Non-Issued Violations																
No Plate	0	2	1	1	1	3	2	4	1	2	1	3	2	14%	2	9%
Out of State Plate	1	0	0	0	0	0	0	0	0	0	0	0	1	7%	0	5%
Glare on Plate	0	0	0	0	0	0	0	0	1	0	0	0	1	7%	0	5%
Illegible Plate	1	1	0	2	0	1	2	3	1	1	0	1	1	10%	3	15%
Plate Obstructed	0	0	1	0	0	0	1	0	0	0	0	0	1	7%	2	5%
Windshield Glare	0	0	0	0	0	1	1	1	0	0	0	0	1	7%	1	5%
Driver Obstructed	2	0	1	1	0	1	1	1	0	2	0	0	1	9%	2	5%
Car Obstructed	0	0	0	0	0	0	0	0	0	0	0	0	0	0%	2	8%
No DMV Match Found	1	3	2	4	3	4	5	2	2	5	4	1	3	21%	4	20%
LASD Expired	0	0	0	0	0	0	0	0	0	0	0	0	0	0%	1	9%
LASD Return	3	1	5	1	4	2	5	2	4	1	1	1	3	18%	3	12%
Other	0	0	0	0	0	0	0	0	0	0	0	0	0	0%	0	0%
Total:	8	7	10	9	8	12	17	13	9	11	6	6	14	100%	18	100%
Controllable Non-Issued Violations																
Framing of Plate	0	0	0	0	0	0	0	0	0	0	0	0	0	0%	1	0%
Focus / Clarity of Plate	1	0	0	0	0	0	0	0	0	0	1	1	1	13%	1	0%
Dark Interior	1	0	0	0	0	0	0	0	1	1	1	0	1	13%	0	15%
Framing of Driver	0	0	0	0	0	0	0	0	0	0	0	0	0	0%	0	0%
Focus / Clarity of Driver	0	0	0	0	0	0	0	0	0	0	2	2	2	25%	0	0%
Framing of Car	0	0	0	0	1	0	0	0	0	0	0	0	1	13%	1	0%
Data/Operator Error	0	0	1	0	0	0	0	0	0	0	0	0	1	13%	0	0%
Exposure	0	0	0	0	0	0	0	2	0	0	0	0	2	25%	4	23%
Equipment Malfunction	0	0	0	0	0	0	0	0	0	0	0	0	0	0%	7	62%
ACS Expired	0	0	0	0	0	0	0	0	0	0	0	0	0	0%	0	0%
Total:	2	0	1	0	1	0	0	2	1	1	2	3	8	100%	14	100%
Summary Metrics																
Daily Average Vehicle Passes	844	721	818	1,103	974	837	714	559	845	713	1,006	723	Year to Date Monthly Average		2013 Monthly Average	
Average Issued Speed	19	23	23	23	28	26	22	25	25	25	0	0	821	722		
Average Issued Red Seconds	50.1	27.1	8.4	49.7	14.4	0.4	11.5	25.5	0.8	28.1	0	0	24	23		
Citation / Violation Issuance Rate	17%	50%	54%	40%	36%	14%	35%	35%	33%	37%	0%	0%	22	27.2		
Controllable Issuance Rate	50%	100%	93%	100%	83%	100%	100%	80%	83%	88%	0%	0%	35%	33%		
													88%	88%		



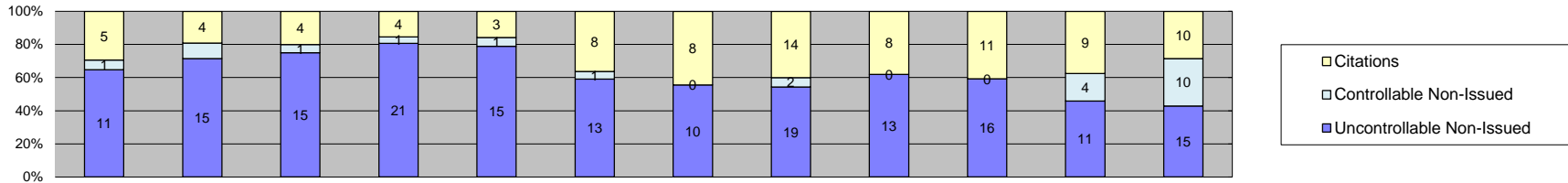
Los Angeles County MTA Gold Line
 Approach Summary Report
 Location 4069: WB to SB 3rd @ Downey



Events	Jan-14	Feb-14	Mar-14	Apr-14	May-14	Jun-14	Jul-14	Aug-14	Sep-14	Oct-14	Nov-14	Dec-14	Year to Date Monthly Average		2013 Monthly Average	
													Quantity	%	Quantity	%
Non-Violations	484	391	440	380	352	387	455	428	405	382	369	345	402	81%	417	83%
Violations	95	77	100	81	86	111	115	90	89	94	59	98	91	19%	87	17%
Total:	579	468	540	461	438	498	570	518	494	476	428	443	493	100%	504	100%
Violations																
Uncontrollable Non-Issued	52	49	74	52	48	61	65	61	56	58	35	57	56	60%	55	59%
Controllable Non-Issued	1	2	1	2	25	21	0	0	2	1	6	15	8	8%	7	16%
Citations	42	26	25	27	13	29	50	29	31	35	18	26	29	32%	31	26%
Total:	95	77	100	81	86	111	115	90	89	94	59	98	93	100%	93	100%
Non-Violations																
Rear Axle Violation	0	2	0	0	0	0	1	1	2	0	0	0	2	0%	1	0%
Emergency Vehicle	34	27	29	19	11	25	42	51	37	26	15	28	29	7%	26	5%
Right Turn	0	0	0	0	0	0	0	0	0	0	0	0	0	0%	0	0%
No Violation Occurred	450	362	411	361	341	362	412	376	366	356	354	317	372	93%	391	94%
Total:	484	391	440	380	352	387	455	428	405	382	369	345	403	100%	418	100%
Uncontrollable Non-Issued Violations																
No Plate	4	11	15	11	9	12	17	11	11	10	12	8	11	18%	9	10%
Out of State Plate	1	0	1	2	2	2	1	1	2	2	0	3	2	3%	2	2%
Glare on Plate	0	0	0	0	0	0	0	0	0	0	0	0	0	0%	1	0%
Illegible Plate	0	1	0	0	0	1	0	1	0	0	0	0	1	2%	1	1%
Plate Obstructed	2	0	0	2	0	2	1	0	1	2	0	2	2	3%	1	2%
Windshield Glare	0	2	5	7	17	12	9	11	5	0	0	2	8	13%	6	7%
Driver Obstructed	2	1	4	0	1	0	2	1	0	0	0	0	2	3%	1	2%
Car Obstructed	1	0	1	1	0	1	1	0	0	0	0	0	1	2%	2	11%
No DMV Match Found	16	13	12	7	7	11	13	13	19	20	13	15	13	22%	16	17%
LASD Expired	0	0	0	0	0	0	0	0	0	0	0	0	0	0%	1	16%
LASD Return	26	21	36	22	12	20	21	23	18	24	10	27	22	36%	22	31%
Other	0	0	0	0	0	0	0	0	0	0	0	0	0	0%	0	0%
Total:	52	49	74	52	48	61	65	61	56	58	35	57	61	100%	61	100%
Controllable Non-Issued Violations																
Framing of Plate	0	1	0	0	0	0	0	0	0	0	0	0	1	4%	0	0%
Focus / Clarity of Plate	0	0	0	0	0	0	0	0	0	0	0	0	0	0%	0	3%
Dark Interior	1	0	1	1	0	3	0	0	0	0	0	2	2	7%	0	3%
Framing of Driver	0	0	0	0	0	0	0	0	0	0	0	0	0	0%	0	0%
Focus / Clarity of Driver	0	0	0	0	0	0	0	0	0	0	5	13	9	38%	0	0%
Framing of Car	0	0	0	0	0	0	0	0	0	0	0	0	0	0%	0	0%
Data/Operator Error	0	0	0	0	0	0	0	0	0	0	0	0	0	0%	0	0%
Exposure	0	0	0	1	1	1	0	0	0	1	1	0	1	4%	1	3%
Equipment Malfunction	0	1	0	0	24	17	0	0	2	0	0	0	11	47%	13	88%
ACS Expired	0	0	0	0	0	0	0	0	0	0	0	0	0	0%	0	3%
Total:	1	2	1	2	25	21	0	0	2	1	6	15	24	100%	14	100%
Summary Metrics																
Daily Average Vehicle Passes	1,297	1,108	1,166	973	811	1,340	909	941	1,130	974	1,116	941	Year to Date Monthly Average		2013 Monthly Average	
Average Issued Speed	29	27	26	28	29	31	30	30	29	27	26	29	1,059		1,147	
Average Issued Red Seconds	55.8	40.5	46.1	32.9	48.4	39.4	40.5	44.3	54.8	34.0	47.0	42.5	44		41.5	
Citation / Violation Issuance Rate	44%	34%	25%	33%	15%	26%	43%	32%	35%	37%	31%	27%	32%		37%	
Controllable Issuance Rate	98%	93%	96%	93%	34%	58%	100%	100%	94%	97%	75%	63%	83%		97%	



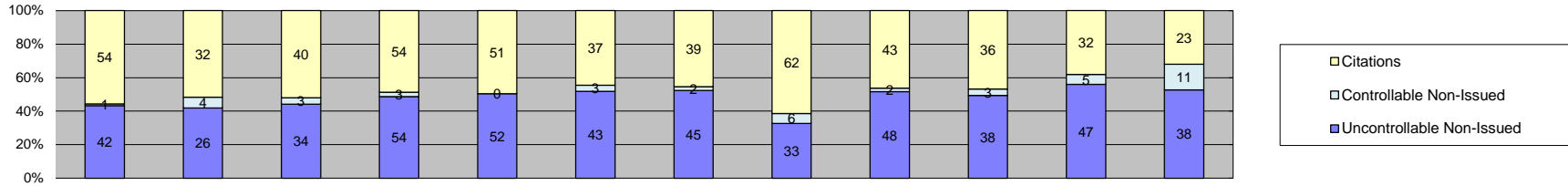
Los Angeles County MTA Gold Line
 Approach Summary Report
 Location 4077: EB to NB 3rd @ Gage



Events	Year to Date Monthly Average												2013 Monthly Average			
	Jan-14	Feb-14	Mar-14	Apr-14	May-14	Jun-14	Jul-14	Aug-14	Sep-14	Oct-14	Nov-14	Dec-14	Quantity	%	Quantity	%
Non-Violations	133	130	119	151	146	129	125	147	117	155	134	104	133	85%	128	84%
Violations	17	21	20	26	19	22	18	35	21	27	24	35	24	15%	24	16%
Total:	150	151	139	177	165	151	143	182	138	182	158	139	156	100%	152	100%
Violations																
Uncontrollable Non-Issued	11	15	15	21	15	13	10	19	13	16	11	15	15	59%	16	74%
Controllable Non-Issued	1	2	1	1	1	1	0	2	0	0	4	10	3	10%	4	4%
Citations	5	4	4	4	3	8	8	14	8	11	9	10	7	30%	6	22%
Total:	17	21	20	26	19	22	18	35	21	27	24	35	24	100%	26	100%
Non-Violations																
Rear Axle Violation	0	0	0	0	0	0	0	0	0	0	0	0	0	0%	1	0%
Emergency Vehicle	2	0	0	2	2	0	3	0	2	0	0	0	2	2%	2	1%
Right Turn	0	0	0	0	0	0	0	0	0	0	0	0	0	0%	0	0%
No Violation Occurred	131	130	119	149	144	129	122	147	115	155	134	104	132	98%	127	99%
Total:	133	130	119	151	146	129	125	147	117	155	134	104	134	100%	129	100%
Uncontrollable Non-Issued Violations																
No Plate	3	1	1	4	1	3	2	3	2	1	1	4	2	13%	2	7%
Out of State Plate	0	0	0	0	0	0	0	0	0	0	0	0	0	0%	1	4%
Glare on Plate	0	0	0	0	0	0	0	0	0	0	0	0	0	0%	0	4%
Illegible Plate	1	0	3	2	2	1	0	3	2	2	2	3	2	12%	2	10%
Plate Obstructed	0	0	0	1	2	0	1	0	0	0	0	0	1	8%	1	6%
Windshield Glare	1	1	0	1	2	3	0	4	1	0	0	0	2	11%	2	6%
Driver Obstructed	1	6	2	1	1	2	4	3	3	1	0	0	2	14%	3	10%
Car Obstructed	0	0	0	0	0	0	0	0	0	0	0	0	0	0%	1	5%
No DMV Match Found	3	3	5	8	4	1	1	4	2	4	3	3	3	20%	3	17%
LASD Expired	0	0	0	0	0	0	0	0	0	0	0	0	0	0%	1	5%
LASD Return	2	4	4	4	3	3	2	2	3	8	5	5	4	22%	4	26%
Other	0	0	0	0	0	0	0	0	0	0	0	0	0	0%	0	0%
Total:	11	15	15	21	15	13	10	19	13	16	11	15	17	100%	20	100%
Controllable Non-Issued Violations																
Framing of Plate	0	0	0	0	0	0	0	0	0	0	0	0	0	0%	0	0%
Focus / Clarity of Plate	0	1	0	0	0	0	0	0	0	0	1	1	1	11%	0	0%
Dark Interior	1	1	0	0	0	0	0	0	0	0	1	0	1	11%	3	50%
Framing of Driver	0	0	0	0	0	0	0	0	0	0	0	0	0	0%	0	0%
Focus / Clarity of Driver	0	0	0	0	0	0	0	0	0	0	1	9	5	54%	0	0%
Framing of Car	0	0	0	0	0	0	0	0	0	0	0	0	0	0%	0	0%
Data/Operator Error	0	0	0	1	0	0	0	0	0	0	0	0	1	11%	0	0%
Exposure	0	0	1	0	1	1	0	2	0	0	1	0	1	13%	3	50%
Equipment Malfunction	0	0	0	0	0	0	0	0	0	0	0	0	0	0%	5	0%
ACS Expired	0	0	0	0	0	0	0	0	0	0	0	0	0	0%	0	0%
Total:	1	2	1	1	1	1	0	2	0	0	4	10	9	100%	11	100%
Summary Metrics																
Daily Average Vehicle Passes	974	940	1,230	1,043	907	904	811	1,167	1,103	939	839	755	Year to Date Monthly Average		2013 Monthly Average	
Average Issued Speed	20	20	17	20	18	19	18	18	20	17	19	20	968		979	
Average Issued Red Seconds	0.3	0.4	0.6	0.6	33.5	0.6	4.8	11.2	0.4	0.5	11.8	0.4	5		9.3	
Citation / Violation Issuance Rate	29%	19%	20%	15%	16%	36%	44%	40%	38%	41%	38%	29%	30%		26%	
Controllable Issuance Rate	83%	67%	80%	80%	75%	89%	100%	88%	100%	100%	69%	50%	82%		79%	



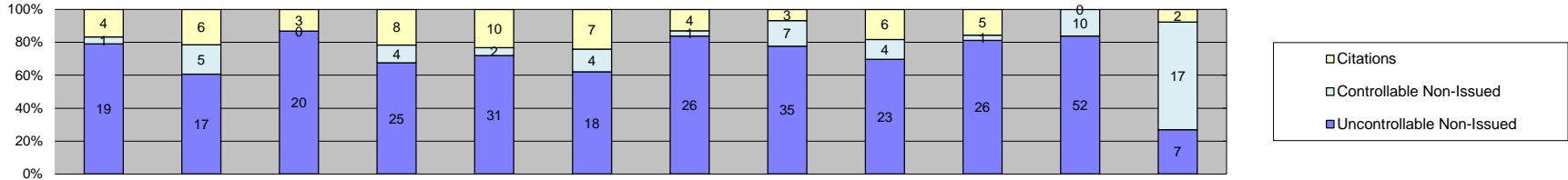
Los Angeles County MTA Gold Line
 Approach Summary Report
 Location 4079: WB to SB 3rd @ Gage



Events	Year to Date Monthly Average												2013 Monthly Average			
	Jan-14	Feb-14	Mar-14	Apr-14	May-14	Jun-14	Jul-14	Aug-14	Sep-14	Oct-14	Nov-14	Dec-14	Quantity	%	Quantity	%
Non-Violations	252	281	267	329	322	287	354	334	341	403	360	340	323	79%	236	77%
Violations	97	62	77	111	103	83	86	101	93	77	84	72	87	21%	57	23%
Total:	349	343	344	440	425	370	440	435	434	480	444	412	410	100%	293	100%
Violations																
Uncontrollable Non-Issued	42	26	34	54	52	43	45	33	48	38	47	38	42	48%	30	62%
Controllable Non-Issued	1	4	3	3	0	3	2	6	2	3	5	11	4	4%	2	8%
Citations	54	32	40	54	51	37	39	62	43	36	32	23	42	48%	25	30%
Total:	97	62	77	111	103	83	86	101	93	77	84	72	87	100%	57	100%
Non-Violations																
Rear Axle Violation	1	0	0	0	0	0	1	0	0	0	0	0	1	0%	2	1%
Emergency Vehicle	3	11	8	7	4	4	11	19	18	5	1	6	8	3%	7	3%
Right Turn	0	0	0	0	0	0	0	0	0	0	0	0	0	0%	0	0%
No Violation Occurred	248	270	259	322	318	283	342	315	323	398	359	334	314	97%	228	96%
Total:	252	281	267	329	322	287	354	334	341	403	360	340	323	100%	237	100%
Uncontrollable Non-Issued Violations																
No Plate	12	6	11	11	12	12	12	11	9	7	7	10	10	22%	6	13%
Out of State Plate	0	2	2	0	1	0	2	2	2	1	1	1	2	3%	1	3%
Glare on Plate	0	1	0	1	2	2	0	0	0	2	1	0	2	3%	1	7%
Illegible Plate	8	2	2	8	4	3	9	6	7	4	8	4	5	12%	4	15%
Plate Obstructed	1	0	0	1	0	1	0	0	1	0	2	0	1	3%	2	3%
Windshield Glare	0	1	1	0	1	2	3	1	2	0	0	1	2	3%	2	5%
Driver Obstructed	6	1	4	5	9	3	1	0	4	7	4	6	5	10%	4	4%
Car Obstructed	0	0	0	0	0	0	2	0	0	0	1	0	2	3%	1	5%
No DMV Match Found	9	8	9	15	13	16	10	9	15	10	13	9	11	25%	8	11%
LASD Expired	0	0	0	0	0	0	0	0	0	0	0	0	0	0%	3	14%
LASD Return	6	5	5	13	10	4	6	4	8	7	10	7	7	16%	7	22%
Other	0	0	0	0	0	0	0	0	0	0	0	0	0	0%	0	0%
Total:	42	26	34	54	52	43	45	33	48	38	47	38	46	100%	39	100%
Controllable Non-Issued Violations																
Framing of Plate	0	0	0	0	0	0	1	0	0	0	0	0	1	6%	1	4%
Focus / Clarity of Plate	0	2	0	0	0	0	0	0	0	0	0	3	3	15%	1	0%
Dark Interior	0	0	0	0	0	0	0	0	0	2	1	0	2	9%	1	0%
Framing of Driver	1	2	3	2	0	0	0	1	0	0	0	0	2	11%	1	7%
Focus / Clarity of Driver	0	0	0	0	0	0	0	0	0	0	3	8	6	34%	0	0%
Framing of Car	0	0	0	0	0	1	0	0	0	0	0	0	1	6%	0	4%
Data/Operator Error	0	0	0	0	0	0	0	0	0	1	0	0	1	6%	0	49%
Exposure	0	0	0	1	0	2	1	5	2	0	1	0	2	12%	1	14%
Equipment Malfunction	0	0	0	0	0	0	0	0	0	0	0	0	0	0%	0	22%
ACS Expired	0	0	0	0	0	0	0	0	0	0	0	0	0	0%	0	0%
Total:	1	4	3	3	0	3	2	6	2	3	5	11	16	100%	5	100%
Summary Metrics																
Daily Average Vehicle Passes	1,786	1,791	1,523	1,339	1,102	1,473	1,324	972	973	1,426	1,303	1,038	Year to Date Monthly Average		2013 Monthly Average	
Average Issued Speed	19	19	19	19	18	18	19	19	19	19	19	19	19		19	
Average Issued Red Seconds	6.6	4.4	10.8	4.2	4.2	8.1	3.1	6.8	5.7	4.0	9.2	6.1	6		8.4	
Citation / Violation Issuance Rate	56%	52%	52%	49%	50%	45%	45%	61%	46%	47%	38%	32%	48%		43%	
Controllable Issuance Rate	98%	89%	93%	95%	100%	93%	95%	91%	96%	92%	86%	68%	91%		93%	



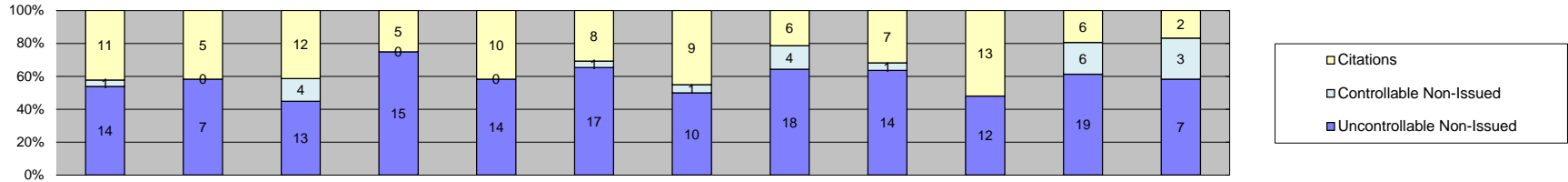
Los Angeles County MTA Gold Line
 Approach Summary Report
 Location 4083: EB to NB 3rd @ Rowan



Events	2014												Year to Date Monthly Average		2013 Monthly Average		
	Jan-14	Feb-14	Mar-14	Apr-14	May-14	Jun-14	Jul-14	Aug-14	Sep-14	Oct-14	Nov-14	Dec-14	Quantity	%	Quantity	%	
Non-Violations	332	339	376	413	472	493	498	509	479	536	496	539	457	93%	431	89%	
Violations	24	28	23	37	43	29	31	45	33	32	62	26	34	7%	44	11%	
Total:	356	367	399	450	515	522	529	554	512	568	558	565	491	100%	475	100%	
Violations																	
Uncontrollable Non-Issued	19	17	20	25	31	18	26	35	23	26	52	7	25	71%	30	75%	
Controllable Non-Issued	1	5	0	4	2	4	1	7	4	1	10	17	5	14%	10	11%	
Citations	4	6	3	8	10	7	4	3	6	5	0	2	5	15%	7	14%	
Total:	24	28	23	37	43	29	31	45	33	32	62	26	35	100%	47	100%	
Non-Violations																	
Rear Axle Violation	0	0	0	0	0	0	0	0	0	0	0	0	0	0%	1	0%	
Emergency Vehicle	1	0	1	1	4	0	2	5	1	0	0	2	2	0%	2	1%	
Right Turn	0	0	0	0	0	0	0	0	0	0	0	0	0	0%	0	0%	
No Violation Occurred	331	339	375	412	468	493	496	504	478	536	496	537	455	100%	430	99%	
Total:	332	339	376	413	472	493	498	509	479	536	496	539	458	100%	433	100%	
Uncontrollable Non-Issued Violations																	
No Plate	1	1	1	2	4	4	3	3	2	5	3	1	3	9%	2	6%	
Out of State Plate	0	1	0	0	1	0	0	0	1	0	0	0	1	3%	1	2%	
Glare on Plate	0	0	0	1	2	1	0	0	0	0	1	0	1	4%	1	2%	
Illegible Plate	8	3	5	4	4	0	3	2	2	1	33	1	6	21%	10	26%	
Plate Obstructed	0	0	1	1	0	1	0	0	0	1	0	0	1	3%	1	3%	
Windshield Glare	1	3	2	1	2	5	4	15	5	2	5	1	4	13%	3	5%	
Driver Obstructed	1	1	2	1	6	1	4	4	3	3	0	1	2	8%	4	5%	
Car Obstructed	0	0	0	0	0	0	0	0	1	0	0	0	1	3%	2	29%	
No DMV Match Found	4	2	3	8	6	3	5	4	4	3	5	0	4	15%	6	8%	
LASD Expired	0	0	0	0	0	0	0	0	0	0	0	0	0	0%	1	3%	
LASD Return	4	6	6	7	6	3	7	7	5	10	5	3	6	20%	5	10%	
Other	0	0	0	0	0	0	0	0	0	0	0	0	0	0%	0	0%	
Total:	19	17	20	25	31	18	26	35	23	26	52	7	29	100%	36	100%	
Controllable Non-Issued Violations																	
Framing of Plate	0	0	0	0	1	0	0	0	0	0	0	0	1	7%	0	0%	
Focus / Clarity of Plate	0	5	0	0	0	0	0	0	0	0	1	7	4	30%	0	6%	
Dark Interior	1	0	0	4	1	3	1	5	4	1	5	5	3	21%	1	23%	
Framing of Driver	0	0	0	0	0	0	0	0	0	0	0	0	0	0%	0	0%	
Focus / Clarity of Driver	0	0	0	0	0	0	0	0	0	0	3	5	4	28%	0	0%	
Framing of Car	0	0	0	0	0	0	0	0	0	0	0	0	0	0%	0	0%	
Data/Operator Error	0	0	0	0	0	0	0	1	0	0	0	0	1	7%	4	0%	
Exposure	0	0	0	0	0	1	0	1	0	0	1	0	1	7%	1	0%	
Equipment Malfunction	0	0	0	0	0	0	0	0	0	0	0	0	0	0%	20	70%	
ACS Expired	0	0	0	0	0	0	0	0	0	0	0	0	0	0%	0	0%	
Total:	1	5	0	4	2	4	1	7	4	1	10	17	14	100%	26	100%	
Summary Metrics																	
Daily Average Vehicle Passes	493	689	716	940	811	738	619	746	609	493	609	426	Year to Date Monthly Average		2013 Monthly Average		
Average Issued Speed	19	19	17	16	18	17	18	20	18	18	0	18	657		721		
Average Issued Red Seconds	1.3	10.9	24.3	10.8	22.9	33.3	15.0	74.4	13.2	8.1	0	11.2	18		19		
Citation / Violation Issuance Rate	17%	21%	13%	22%	23%	24%	13%	7%	18%	16%	0%	8%	20		7.6		
Controllable Issuance Rate	80%	55%	100%	67%	83%	64%	80%	30%	60%	83%	0%	11%	16%		17%		
													65%		67%		



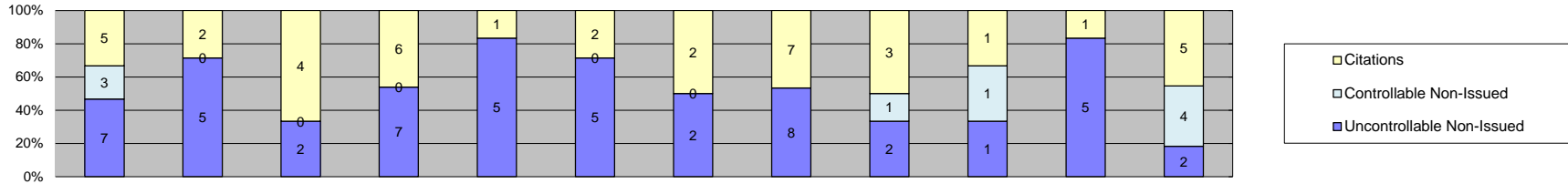
Los Angeles County MTA Gold Line
 Approach Summary Report
 Location 4085: WB to SB 3rd @ Rowan



Events	Year to Date												Year to Date Monthly Average		2013 Monthly Average	
	Jan-14	Feb-14	Mar-14	Apr-14	May-14	Jun-14	Jul-14	Aug-14	Sep-14	Oct-14	Nov-14	Dec-14	Quantity	%	Quantity	%
Non-Violations	20	14	25	24	18	38	20	25	15	13	14	12	20	46%	18	44%
Violations	26	12	29	20	24	26	20	28	22	25	31	12	23	54%	26	56%
Total:	46	26	54	44	42	64	40	53	37	38	45	24	43	100%	44	100%
Violations																
Uncontrollable Non-Issued	14	7	13	15	14	17	10	18	14	12	19	7	13	56%	16	54%
Controllable Non-Issued	1	0	4	0	0	1	1	4	1	0	6	3	3	11%	4	7%
Citations	11	5	12	5	10	8	9	6	7	13	6	2	8	33%	8	39%
Total:	26	12	29	20	24	26	20	28	22	25	31	12	24	100%	28	100%
Non-Violations																
Rear Axle Violation	0	0	0	0	0	0	0	0	0	0	0	0	0	0%	1	0%
Emergency Vehicle	10	7	14	10	9	17	5	8	8	2	6	3	8	42%	7	35%
Right Turn	0	0	0	0	0	0	0	0	0	0	0	0	0	0%	0	0%
No Violation Occurred	10	7	11	14	9	21	15	17	7	11	8	9	12	58%	11	65%
Total:	20	14	25	24	18	38	20	25	15	13	14	12	20	100%	19	100%
Uncontrollable Non-Issued Violations																
No Plate	1	2	4	3	3	2	1	6	4	3	3	2	3	17%	2	11%
Out of State Plate	0	0	0	1	0	0	0	0	0	0	1	0	1	6%	1	4%
Glare on Plate	0	0	0	0	0	0	0	0	0	0	0	0	0	0%	0	4%
Illegible Plate	0	0	0	0	0	0	1	2	1	1	0	0	1	7%	2	6%
Plate Obstructed	0	0	0	0	0	0	0	0	0	0	0	0	0	0%	1	4%
Windshield Glare	1	0	0	0	2	4	3	1	0	1	0	1	2	11%	1	4%
Driver Obstructed	3	0	3	0	1	5	0	2	2	1	0	0	2	14%	2	8%
Car Obstructed	0	0	0	0	0	0	0	0	0	0	0	0	0	0%	0	4%
No DMV Match Found	5	4	5	4	5	4	5	3	4	5	10	1	5	27%	7	27%
LASD Expired	0	0	0	0	0	0	0	0	0	0	0	0	0	0%	2	8%
LASD Return	4	1	1	7	3	2	0	4	3	1	5	3	3	18%	5	22%
Other	0	0	0	0	0	0	0	0	0	0	0	0	0	0%	0	0%
Total:	14	7	13	15	14	17	10	18	14	12	19	7	17	100%	22	100%
Controllable Non-Issued Violations																
Framing of Plate	0	0	0	0	0	0	0	0	0	0	0	0	0	0%	0	0%
Focus / Clarity of Plate	0	0	0	0	0	0	0	0	0	0	0	0	0	0%	0	0%
Dark Interior	0	0	0	0	0	1	1	0	0	0	1	0	1	10%	1	16%
Framing of Driver	0	0	0	0	0	0	0	0	0	0	0	0	0	0%	0	0%
Focus / Clarity of Driver	0	0	0	0	0	0	0	0	0	0	4	3	4	34%	0	0%
Framing of Car	0	0	0	0	0	0	0	0	0	0	0	0	0	0%	0	0%
Data/Operator Error	0	0	0	0	0	0	0	0	0	0	0	0	0	0%	7	0%
Exposure	1	0	0	0	0	0	0	4	1	0	1	0	2	17%	2	21%
Equipment Malfunction	0	0	0	0	0	0	0	0	0	0	0	0	0	0%	0	63%
ACS Expired	0	0	4	0	0	0	0	0	0	0	0	0	4	39%	0	0%
Total:	1	0	4	0	0	1	1	4	1	0	6	3	10	100%	10	100%
Summary Metrics																
Daily Average Vehicle Passes	1,297	1,329	1,558	1,270	1,294	1,172	1,165	1,071	1,004	1,200	1,304	1,071	Year to Date Monthly Average		2013 Monthly Average	
Average Issued Speed	16	17	17	15	18	17	17	17	17	16	18	19	1,228		1,227	
Average Issued Red Seconds	37.0	14.9	3.1	12.9	15.4	0.6	18.6	17.5	30.5	28.8	0.5	0.5	15		13.8	
Citation / Violation Issuance Rate	42%	42%	41%	25%	42%	31%	45%	21%	32%	52%	19%	17%	34%		31%	
Controllable Issuance Rate	92%	100%	75%	100%	100%	89%	90%	60%	88%	100%	50%	40%	82%		85%	



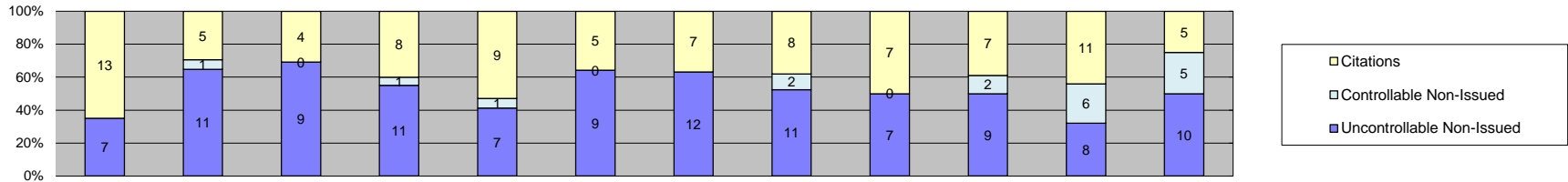
**Los Angeles County MTA Gold Line
Approach Summary Report
Location 4087: EB to NB 1st @ Lorena**



Events	Year to Date Monthly Average												2013 Monthly Average				
	Jan-14	Feb-14	Mar-14	Apr-14	May-14	Jun-14	Jul-14	Aug-14	Sep-14	Oct-14	Nov-14	Dec-14	Quantity	%	Quantity	%	
Non-Violations	196	137	113	138	189	134	119	208	109	125	163	175	151	95%	165	91%	
Violations	15	7	6	13	6	7	4	15	6	3	6	11	8	5%	8	9%	
Total:	211	144	119	151	195	141	123	223	115	128	169	186	159	100%	174	100%	
Violations																	
Uncontrollable Non-Issued	7	5	2	7	5	5	2	8	2	1	5	2	4	44%	5	44%	
Controllable Non-Issued	3	0	0	0	0	0	0	0	1	1	0	4	2	23%	2	8%	
Citations	5	2	4	6	1	2	2	7	3	1	1	5	3	33%	4	48%	
Total:	15	7	6	13	6	7	4	15	6	3	6	11	10	100%	11	100%	
Non-Violations																	
Rear Axle Violation	0	0	0	0	0	0	0	0	0	0	0	0	0	0%	0	0%	
Emergency Vehicle	1	0	1	1	0	0	0	1	1	0	0	0	1	1%	1	1%	
Right Turn	0	0	0	0	0	0	0	0	0	0	0	0	0	0%	0	0%	
No Violation Occurred	195	137	112	137	189	134	119	207	108	125	163	175	150	99%	165	99%	
Total:	196	137	113	138	189	134	119	208	109	125	163	175	151	100%	166	100%	
Uncontrollable Non-Issued Violations																	
No Plate	0	0	0	2	1	1	0	0	0	0	3	1	2	16%	1	11%	
Out of State Plate	0	0	0	0	0	0	1	0	0	0	0	0	1	10%	1	14%	
Glare on Plate	0	0	0	0	0	0	0	0	0	0	0	0	0	0%	0	0%	
Illegible Plate	1	0	1	0	0	1	0	0	0	0	0	0	1	10%	1	7%	
Plate Obstructed	0	0	0	0	0	0	0	0	0	0	0	0	0	0%	1	7%	
Windshield Glare	0	0	0	1	1	0	0	2	2	0	0	0	2	15%	2	7%	
Driver Obstructed	0	0	0	0	0	0	0	0	0	0	0	0	0	0%	3	7%	
Car Obstructed	0	1	0	0	0	0	0	0	0	0	0	0	1	10%	0	9%	
No DMV Match Found	4	3	0	3	3	3	0	4	0	0	1	0	3	29%	2	19%	
LASD Expired	0	0	0	0	0	0	0	0	0	0	0	0	0	0%	0	10%	
LASD Return	2	1	1	1	0	0	1	2	0	1	1	1	1	12%	2	10%	
Other	0	0	0	0	0	0	0	0	0	0	0	0	0	0%	0	0%	
Total:	7	5	2	7	5	5	2	8	2	1	5	2	10	100%	12	100%	
Controllable Non-Issued Violations																	
Framing of Plate	0	0	0	0	0	0	0	0	0	0	0	0	0	0%	0	50%	
Focus / Clarity of Plate	0	0	0	0	0	0	0	0	0	0	0	0	0	0%	0	0%	
Dark Interior	0	0	0	0	0	0	0	0	0	1	0	0	1	18%	0	50%	
Framing of Driver	0	0	0	0	0	0	0	0	0	0	0	0	0	0%	0	0%	
Focus / Clarity of Driver	0	0	0	0	0	0	0	0	0	0	0	3	3	53%	0	0%	
Framing of Car	0	0	0	0	0	0	0	0	0	0	0	0	0	0%	0	0%	
Data/Operator Error	0	0	0	0	0	0	0	0	0	0	0	0	0	0%	0	0%	
Exposure	3	0	0	0	0	0	0	0	1	0	0	1	2	29%	2	0%	
Equipment Malfunction	0	0	0	0	0	0	0	0	0	0	0	0	0	0%	3	0%	
ACS Expired	0	0	0	0	0	0	0	0	0	0	0	0	0	0%	0	0%	
Total:	3	0	0	0	0	0	0	0	1	1	0	4	6	100%	5	100%	
Summary Metrics																	
Daily Average Vehicle Passes	939	789	707	1,004	811	906	974	649	609	941	872	651	Year to Date Monthly Average		2013 Monthly Average		
Average Issued Speed	19	18	20	26	16	19	21	20	24	16	21	19	821	718			
Average Issued Red Seconds	40.3	0.7	0.4	0.3	0.5	0.8	50.3	7.8	23.3	0.7	99.9	0.6	20	20			
Citation / Violation Issuance Rate	33%	29%	67%	46%	17%	29%	50%	47%	50%	33%	17%	45%	19	13.8			
Controllable Issuance Rate	63%	100%	100%	100%	100%	100%	100%	100%	75%	50%	100%	56%	39%	43%			
													87%	91%			



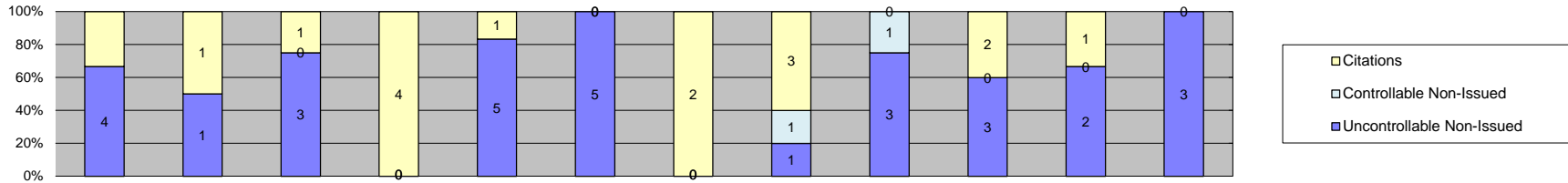
Los Angeles County MTA Gold Line
 Approach Summary Report
 Location 4089: WB to SB 1st @ Lorena



Events	Jan-14												Year to Date Monthly Average		2013 Monthly Average	
	Jan-14	Feb-14	Mar-14	Apr-14	May-14	Jun-14	Jul-14	Aug-14	Sep-14	Oct-14	Nov-14	Dec-14	Quantity	%	Quantity	%
Non-Violations	79	83	78	79	105	81	96	85	94	81	82	60	84	82%	85	88%
Violations	20	17	13	20	17	14	19	21	14	18	25	20	18	18%	15	12%
Total:	99	100	91	99	122	95	115	106	108	99	107	80	102	100%	99	100%
Violations																
Uncontrollable Non-Issued	7	11	9	11	7	9	12	11	7	9	8	10	9	48%	7	52%
Controllable Non-Issued	0	1	0	1	1	0	0	2	0	2	6	5	3	13%	2	8%
Citations	13	5	4	8	9	5	7	8	7	7	11	5	7	39%	6	40%
Total:	20	17	13	20	17	14	19	21	14	18	25	20	19	100%	16	100%
Non-Violations																
Rear Axle Violation	0	0	0	0	0	0	0	0	0	0	0	0	0	0%	0	0%
Emergency Vehicle	0	2	1	1	1	0	1	2	1	0	1	0	1	1%	2	2%
Right Turn	0	0	0	0	0	0	0	0	0	0	0	0	0	0%	0	0%
No Violation Occurred	79	81	77	78	104	81	95	83	93	81	81	60	83	99%	83	98%
Total:	79	83	78	79	105	81	96	85	94	81	82	60	84	100%	85	100%
Uncontrollable Non-Issued Violations																
No Plate	1	3	0	3	0	2	2	1	1	1	1	3	2	11%	2	11%
Out of State Plate	0	1	0	0	0	0	0	0	1	1	0	1	1	6%	1	6%
Glare on Plate	0	0	0	0	1	0	0	0	0	0	0	0	1	6%	0	6%
Illegible Plate	1	2	0	0	0	0	0	3	0	0	0	0	2	12%	2	12%
Plate Obstructed	0	1	0	0	0	0	0	0	0	0	0	0	1	6%	1	6%
Windshield Glare	0	0	0	1	1	2	0	3	0	0	0	0	2	11%	1	6%
Driver Obstructed	2	1	2	4	0	2	0	0	1	1	0	1	2	11%	2	6%
Car Obstructed	0	0	0	0	0	0	0	0	0	0	0	0	0	0%	1	13%
No DMV Match Found	2	3	6	3	1	2	3	3	4	5	7	3	4	22%	3	12%
LASD Expired	0	0	0	0	0	0	0	0	0	0	0	0	0	0%	2	8%
LASD Return	1	0	1	0	4	1	7	1	0	1	0	2	2	14%	2	13%
Other	0	0	0	0	0	0	0	0	0	0	0	0	0	0%	0	0%
Total:	7	11	9	11	7	9	12	11	7	9	8	10	16	100%	15	100%
Controllable Non-Issued Violations																
Framing of Plate	0	0	0	0	0	0	0	0	0	0	0	0	0	0%	1	0%
Focus / Clarity of Plate	0	1	0	0	0	0	0	0	0	0	1	0	1	13%	0	0%
Dark Interior	0	0	0	0	0	0	0	0	0	0	3	3	3	38%	2	0%
Framing of Driver	0	0	0	0	0	0	0	0	0	0	0	0	0	0%	0	0%
Focus / Clarity of Driver	0	0	0	0	0	0	0	0	0	0	2	1	2	19%	0	0%
Framing of Car	0	0	0	0	0	0	0	0	0	0	0	0	0	0%	0	100%
Data/Operator Error	0	0	0	0	1	0	0	0	0	0	0	0	1	13%	6	0%
Exposure	0	0	0	1	0	0	0	2	0	2	0	1	2	19%	1	0%
Equipment Malfunction	0	0	0	0	0	0	0	0	0	0	0	0	0	0%	0	0%
ACS Expired	0	0	0	0	0	0	0	0	0	0	0	0	0	0%	0	0%
Total:	0	1	0	1	1	0	0	2	0	2	6	5	8	100%	10	100%
Summary Metrics																
Daily Average Vehicle Passes	971	721	812	767	557	640	812	977	872	740	643	492	Year to Date Monthly Average		2013 Monthly Average	
Average Issued Speed	19	21	22	19	23	19	18	21	18	23	19	19	750	734		
Average Issued Red Seconds	53.9	12.2	28.8	0.5	0.5	40.4	40.8	12.9	26.9	0.7	29.9	0.8	20	21		
Citation / Violation Issuance Rate	65%	29%	31%	40%	53%	36%	37%	38%	50%	39%	44%	25%	41%	44%		
Controllable Issuance Rate	100%	83%	100%	89%	90%	100%	100%	80%	100%	78%	65%	50%	86%	91%		



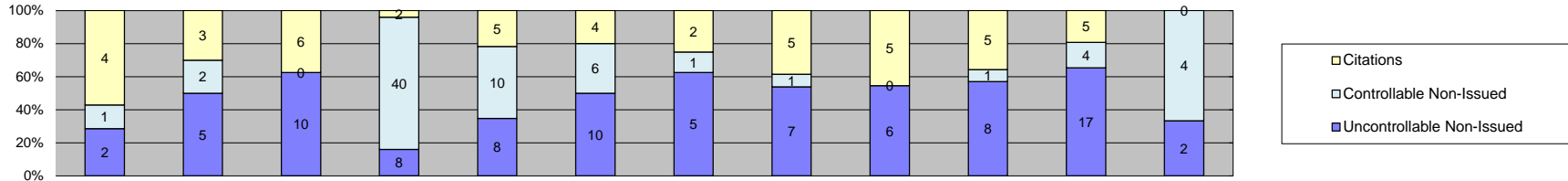
Los Angeles County MTA Gold Line
Approach Summary Report
Location 4097: EB to NB 1st @Clarence



Events	2014												Year to Date Monthly Average		2013 Monthly Average	
	Jan-14	Feb-14	Mar-14	Apr-14	May-14	Jun-14	Jul-14	Aug-14	Sep-14	Oct-14	Nov-14	Dec-14	Quantity	%	Quantity	%
Non-Violations	557	453	508	514	462	483	412	493	505	568	520	543	502	99%	469	98%
Violations	6	2	4	4	6	5	2	5	4	5	3	3	4	1%	15	2%
Total:	563	455	512	518	468	488	414	498	509	573	523	546	506	100%	484	100%
Violations																
Uncontrollable Non-Issued	4	1	3	0	5	5	0	1	3	3	2	3	3	51%	3	49%
Controllable Non-Issued	0	0	0	0	0	0	0	1	1	0	0	0	1	17%	36	31%
Citations	2	1	1	4	1	0	2	3	0	2	1	0	2	32%	2	20%
Total:	6	2	4	4	6	5	2	5	4	5	3	3	6	100%	40	100%
Non-Violations																
Rear Axle Violation	0	0	0	0	0	0	0	0	0	0	0	0	0	0%	1	0%
Emergency Vehicle	0	2	2	0	1	0	2	1	1	0	1	1	1	0%	3	1%
Right Turn	0	0	0	0	0	0	0	0	0	0	0	0	0	0%	0	0%
No Violation Occurred	557	451	506	514	461	483	410	492	504	568	519	542	501	100%	466	99%
Total:	557	453	508	514	462	483	412	493	505	568	520	543	502	100%	470	100%
Uncontrollable Non-Issued Violations																
No Plate	0	0	1	0	2	2	0	0	0	1	0	0	2	20%	1	8%
Out of State Plate	0	0	0	0	0	0	0	0	0	0	0	0	0	0%	1	7%
Glare on Plate	0	0	0	0	0	0	0	0	0	0	0	0	0	0%	0	7%
Illegible Plate	0	0	0	0	1	2	0	0	0	0	0	1	1	18%	1	10%
Plate Obstructed	0	0	0	0	0	0	0	0	0	0	0	0	0	0%	1	7%
Windshield Glare	0	0	0	0	0	0	0	0	1	0	0	1	1	13%	1	7%
Driver Obstructed	1	0	0	0	1	0	0	0	1	0	1	1	1	13%	1	9%
Car Obstructed	0	0	0	0	0	0	0	0	0	0	0	0	0	0%	2	25%
No DMV Match Found	2	0	2	0	0	1	0	1	1	0	1	0	1	18%	1	7%
LASD Expired	0	0	0	0	0	0	0	0	0	0	0	0	0	0%	0	7%
LASD Return	1	1	0	0	1	0	0	0	0	2	0	0	1	17%	1	7%
Other	0	0	0	0	0	0	0	0	0	0	0	0	0	0%	0	0%
Total:	4	1	3	0	5	5	0	1	3	3	2	3	7	100%	10	100%
Controllable Non-Issued Violations																
Framing of Plate	0	0	0	0	0	0	0	0	1	0	0	0	1	50%	0	0%
Focus / Clarity of Plate	0	0	0	0	0	0	0	0	0	0	0	0	0	0%	0	0%
Dark Interior	0	0	0	0	0	0	0	0	0	0	0	0	0	0%	0	0%
Framing of Driver	0	0	0	0	0	0	0	0	0	0	0	0	0	0%	1	0%
Focus / Clarity of Driver	0	0	0	0	0	0	0	0	0	0	0	0	0	0%	0	0%
Framing of Car	0	0	0	0	0	0	0	0	0	0	0	0	0	0%	0	0%
Data/Operator Error	0	0	0	0	0	0	0	1	0	0	0	0	1	50%	0	0%
Exposure	0	0	0	0	0	0	0	0	0	0	0	0	0	0%	1	100%
Equipment Malfunction	0	0	0	0	0	0	0	0	0	0	0	0	0	0%	141	0%
ACS Expired	0	0	0	0	0	0	0	0	0	0	0	0	0	0%	0	0%
Total:	0	0	0	0	0	0	0	1	1	0	0	0	2	100%	143	100%
Summary Metrics																
Daily Average Vehicle Passes	296	220	232	167	155	173	149	159	173	177	231	136	Year to Date Monthly Average		2013 Monthly Average	
Average Issued Speed	15	23	25	19	11	0	17	18	0	16	22	0	189		206	
Average Issued Red Seconds	99.9	0.1	0.4	99.9	57.9	0	50.5	99.9	0	99.9	99.9	0	68		68	
Citation / Violation Issuance Rate	33%	50%	25%	100%	17%	0%	100%	60%	0%	40%	33%	0%	51%		45%	
Controllable Issuance Rate	100%	100%	100%	100%	100%	0%	100%	75%	0%	100%	100%	0%	97%		88%	



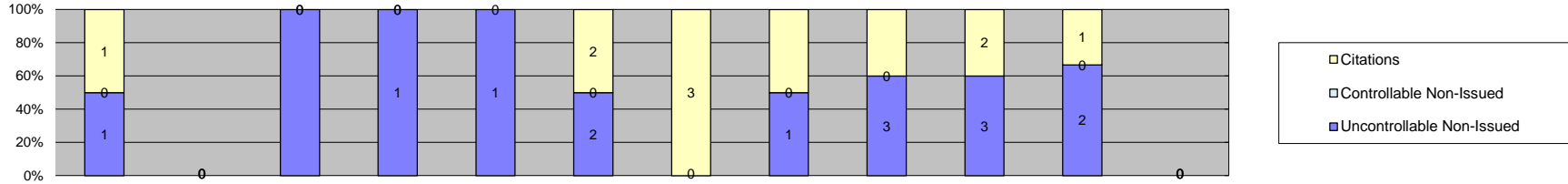
**Los Angeles County MTA Gold Line
Approach Summary Report
Location 4099: WB to SB 1st @ Clarence**



Events	2014												Year to Date Monthly Average		2013 Monthly Average	
	Jan-14	Feb-14	Mar-14	Apr-14	May-14	Jun-14	Jul-14	Aug-14	Sep-14	Oct-14	Nov-14	Dec-14	Quantity	%	Quantity	%
Non-Violations	763	746	908	865	868	681	958	1,045	864	773	855	876	850	98%	808	97%
Violations	7	10	16	50	23	20	8	13	11	14	26	6	17	2%	16	3%
Total:	770	756	924	915	891	701	966	1,058	875	787	881	882	867	100%	825	100%
Violations																
Uncontrollable Non-Issued	2	5	10	8	8	10	5	7	6	8	17	2	7	40%	10	73%
Controllable Non-Issued	1	2	0	40	10	6	1	1	0	1	4	4	7	38%	4	6%
Citations	4	3	6	2	5	4	2	5	5	5	5	0	4	23%	5	22%
Total:	7	10	16	50	23	20	8	13	11	14	26	6	19	100%	19	100%
Non-Violations																
Rear Axle Violation	0	0	0	0	0	0	0	0	0	0	0	0	0	0%	0	0%
Emergency Vehicle	1	3	4	1	5	4	2	1	6	0	2	4	3	0%	4	1%
Right Turn	0	0	0	0	0	0	0	0	0	0	0	0	0	0%	0	0%
No Violation Occurred	762	743	904	864	863	677	956	1,044	858	773	853	872	847	100%	805	99%
Total:	763	746	908	865	868	681	958	1,045	864	773	855	876	850	100%	809	100%
Uncontrollable Non-Issued Violations																
No Plate	1	1	1	2	5	4	1	1	4	1	6	1	2	19%	2	9%
Out of State Plate	0	0	0	0	0	0	0	0	1	2	0	0	2	12%	2	5%
Glare on Plate	0	0	0	0	0	0	0	0	0	0	0	0	0	0%	0	5%
Illegible Plate	0	0	0	0	0	0	0	1	0	0	1	0	1	8%	3	17%
Plate Obstructed	0	0	0	0	0	0	0	0	0	0	0	0	0	0%	0	0%
Windshield Glare	0	0	0	0	0	0	0	0	0	0	0	0	0	0%	2	8%
Driver Obstructed	0	2	3	1	0	4	0	1	0	0	3	1	2	17%	2	7%
Car Obstructed	0	0	1	0	0	0	0	0	0	1	0	0	1	8%	1	31%
No DMV Match Found	1	2	4	3	0	2	2	3	0	1	1	0	2	17%	2	7%
LASD Expired	0	0	0	0	0	0	0	0	0	0	0	0	0	0%	1	5%
LASD Return	0	0	1	2	3	0	2	1	1	3	6	0	2	19%	2	7%
Other	0	0	0	0	0	0	0	0	0	0	0	0	0	0%	0	0%
Total:	2	5	10	8	8	10	5	7	6	8	17	2	12	100%	16	100%
Controllable Non-Issued Violations																
Framing of Plate	0	1	0	0	0	0	0	0	0	0	0	0	1	4%	0	0%
Focus / Clarity of Plate	0	1	0	0	0	0	0	0	0	0	0	0	1	4%	0	25%
Dark Interior	0	0	0	0	0	0	0	0	0	1	3	1	2	6%	1	25%
Framing of Driver	1	0	0	0	0	0	0	0	0	0	0	0	1	4%	0	25%
Focus / Clarity of Driver	0	0	0	0	0	0	0	0	0	0	1	3	2	8%	0	0%
Framing of Car	0	0	0	0	0	0	0	0	0	0	0	0	0	0%	0	25%
Data/Operator Error	0	0	0	0	0	0	0	0	0	0	0	0	0	0%	1	0%
Exposure	0	0	0	0	0	2	1	1	0	0	0	0	1	5%	6	0%
Equipment Malfunction	0	0	0	40	10	4	0	0	0	0	0	0	18	69%	2	0%
ACS Expired	0	0	0	0	0	0	0	0	0	0	0	0	0	0%	0	0%
Total:	1	2	0	40	10	6	1	1	0	1	4	4	26	100%	10	100%
Summary Metrics																
Daily Average Vehicle Passes	493	429	421	576	493	607	650	716	610	524	730	388	Year to Date Monthly Average		2013 Monthly Average	
Average Issued Speed	21	19	19	20	18	17	18	18	21	17	21	0	553		576	
Average Issued Red Seconds	25.3	9.4	56.1	3.7	23.0	72.6	48.3	60.1	20.5	44.8	20.5	0	19		19	
Citation / Violation Issuance Rate	57%	30%	38%	4%	22%	20%	25%	38%	45%	36%	19%	0%	35		48.2	
Controllable Issuance Rate	80%	60%	100%	5%	33%	40%	67%	83%	100%	83%	56%	0%	30%		30%	
													64%		84%	



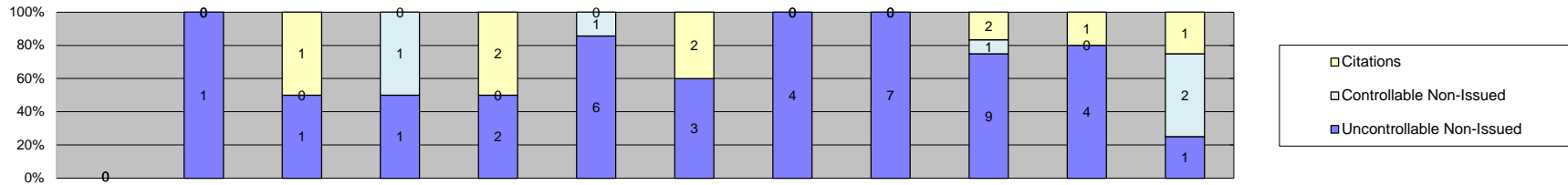
Los Angeles County MTA Gold Line
Approach Summary Report
Location 4109: WB to SB 1st @ Utah



Events	Jan-14	Feb-14	Mar-14	Apr-14	May-14	Jun-14	Jul-14	Aug-14	Sep-14	Oct-14	Nov-14	Dec-14	Year to Date Monthly Average		2013 Monthly Average	
													Quantity	%	Quantity	%
Non-Violations	338	319	329	273	310	310	330	380	318	327	309	305	321	99%	413	98%
Violations	2	0	3	1	1	4	3	2	5	5	3	0	3	1%	4	2%
Total:	340	319	332	274	311	314	333	382	323	332	312	305	324	100%	416	100%
Violations																
Uncontrollable Non-Issued	1	0	3	1	1	2	0	1	3	3	2	0	2	52%	4	36%
Controllable Non-Issued	0	0	0	0	0	0	0	0	0	0	0	0	0	0%	2	51%
Citations	1	0	0	0	0	2	3	1	2	2	1	0	2	48%	1	13%
Total:	2	0	3	1	1	4	3	2	5	5	3	0	4	100%	7	100%
Non-Violations																
Rear Axle Violation	0	0	0	0	0	0	0	0	0	0	0	0	0	0%	0	0%
Emergency Vehicle	4	1	0	0	1	1	0	1	1	0	0	1	1	0%	1	0%
Right Turn	0	0	0	0	0	0	0	0	0	0	0	0	0	0%	0	0%
No Violation Occurred	334	318	329	273	309	309	330	379	317	327	309	304	320	100%	412	99%
Total:	338	319	329	273	310	310	330	380	318	327	309	305	321	100%	413	100%
Uncontrollable Non-Issued Violations																
No Plate	0	0	1	1	0	0	0	1	1	1	0	0	1	21%	2	12%
Out of State Plate	0	0	0	0	0	0	0	0	0	0	0	0	0	0%	0	0%
Glare on Plate	0	0	0	0	0	0	0	0	0	0	0	0	0	0%	0	0%
Illegible Plate	0	0	0	0	0	0	0	0	0	0	0	0	0	0%	2	10%
Plate Obstructed	0	0	0	0	0	0	0	0	0	0	0	0	0	0%	0	0%
Windshield Glare	0	0	0	0	0	0	0	0	0	0	0	0	0	0%	0	0%
Driver Obstructed	1	0	1	0	0	2	0	0	0	0	0	0	1	28%	2	10%
Car Obstructed	0	0	0	0	0	0	0	0	0	0	0	0	0	0%	2	50%
No DMV Match Found	0	0	0	0	1	0	0	0	2	2	1	0	2	31%	1	10%
LASD Expired	0	0	0	0	0	0	0	0	0	0	0	0	0	0%	1	10%
LASD Return	0	0	1	0	0	0	0	0	0	0	1	0	1	21%	1	0%
Other	0	0	0	0	0	0	0	0	0	0	0	0	0	0%	0	0%
Total:	1	0	3	1	1	2	0	1	3	3	2	0	5	100%	10	100%
Controllable Non-Issued Violations																
Framing of Plate	0	0	0	0	0	0	0	0	0	0	0	0	0	0	1	0%
Focus / Clarity of Plate	0	0	0	0	0	0	0	0	0	0	0	0	0	0	0	5%
Dark Interior	0	0	0	0	0	0	0	0	0	0	0	0	0	0	1	0%
Framing of Driver	0	0	0	0	0	0	0	0	0	0	0	0	0	0	0	0%
Focus / Clarity of Driver	0	0	0	0	0	0	0	0	0	0	0	0	0	0	0	0%
Framing of Car	0	0	0	0	0	0	0	0	0	0	0	0	0	0	0	5%
Data/Operator Error	0	0	0	0	0	0	0	0	0	0	0	0	0	0	0	0%
Exposure	0	0	0	0	0	0	0	0	0	0	0	0	0	0	2	5%
Equipment Malfunction	0	0	0	0	0	0	0	0	0	0	0	0	0	0	0	84%
ACS Expired	0	0	0	0	0	0	0	0	0	0	0	0	0	0	0	0%
Total:	0	0	0	0	0	0	0	0	0	0	0	0	0	0%	4	100%
Summary Metrics																
Daily Average Vehicle Passes	166	93	62	40	38	46	46	56	67	62	60	40	Year to Date Monthly Average		2013 Monthly Average	
Average Issued Speed	19	0	0	0	0	20	19	21	17	17	21	0	65		53	
Average Issued Red Seconds	21.0	0	0	0	0	70.0	33.5	99.9	99.9	99.9	99.9	0	75		81	
Citation / Violation Issuance Rate	50%	0%	0%	0%	0%	50%	100%	50%	40%	40%	33%	0%	52%		57%	
Controllable Issuance Rate	100%	0%	0%	0%	0%	100%	100%	100%	100%	100%	100%	0%	100%		93%	



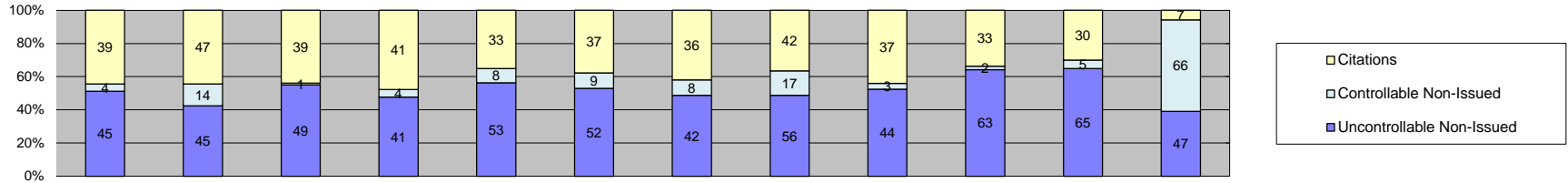
**Los Angeles County MTA Gold Line
Approach Summary Report
Location 4119: WB to SB 1st @ Anderson**



Events	2014												Year to Date Monthly Average		2013 Monthly Average	
	Jan-14	Feb-14	Mar-14	Apr-14	May-14	Jun-14	Jul-14	Aug-14	Sep-14	Oct-14	Nov-14	Dec-14	Quantity	%	Quantity	%
Non-Violations	213	169	219	230	230	124	147	227	161	142	103	109	173	97%	175	96%
Violations	0	1	2	2	4	7	5	4	7	12	5	4	5	3%	5	4%
Total:	213	170	221	232	234	131	152	231	168	154	108	113	178	100%	180	100%
Violations																
Uncontrollable Non-Issued	0	1	1	1	2	6	3	4	7	9	4	1	4	56%	3	76%
Controllable Non-Issued	0	0	0	1	0	1	0	0	0	1	0	2	1	20%	2	11%
Citations	0	0	1	0	2	0	2	0	0	2	1	1	2	24%	2	13%
Total:	0	1	2	2	4	7	5	4	7	12	5	4	6	100%	7	100%
Non-Violations																
Rear Axle Violation	0	0	0	0	0	0	0	0	0	0	0	0	0	0%	0	1%
Emergency Vehicle	2	0	1	3	0	0	3	3	1	0	0	0	2	1%	2	1%
Right Turn	0	0	0	0	0	0	0	0	0	0	0	0	0	0%	0	0%
No Violation Occurred	211	169	218	227	230	124	144	224	160	142	103	109	172	99%	174	99%
Total:	213	169	219	230	230	124	147	227	161	142	103	109	174	100%	176	100%
Uncontrollable Non-Issued Violations																
No Plate	0	0	0	0	0	2	1	0	2	3	0	0	2	17%	2	11%
Out of State Plate	0	0	0	0	0	0	0	0	0	0	0	0	0	0%	0	5%
Glare on Plate	0	0	0	0	0	0	0	0	0	0	0	0	0	0%	0	0%
Illegible Plate	0	0	0	0	0	0	0	0	0	0	0	0	0	0%	2	8%
Plate Obstructed	0	0	0	0	1	0	0	0	0	0	1	0	1	8%	1	0%
Windshield Glare	0	0	1	0	0	1	0	0	0	0	1	0	1	8%	1	5%
Driver Obstructed	0	0	0	0	0	1	1	2	0	2	0	0	2	13%	1	11%
Car Obstructed	0	0	0	0	0	0	0	0	4	0	0	0	4	33%	1	43%
No DMV Match Found	0	1	0	0	0	0	0	1	1	1	0	0	1	8%	1	5%
LASD Expired	0	0	0	0	0	0	0	0	0	0	0	0	0	0%	0	0%
LASD Return	0	0	0	1	1	2	1	1	0	3	2	1	2	13%	1	11%
Other	0	0	0	0	0	0	0	0	0	0	0	0	0	0%	0	0%
Total:	0	1	1	1	2	6	3	4	7	9	4	1	12	100%	10	100%
Controllable Non-Issued Violations																
Framing of Plate	0	0	0	0	0	0	0	0	0	0	0	0	0	0%	0	0%
Focus / Clarity of Plate	0	0	0	0	0	1	0	0	0	0	0	1	1	25%	0	0%
Dark Interior	0	0	0	0	0	0	0	0	0	1	0	0	1	25%	1	0%
Framing of Driver	0	0	0	0	0	0	0	0	0	0	0	0	0	0%	0	0%
Focus / Clarity of Driver	0	0	0	0	0	0	0	0	0	0	0	1	1	25%	0	0%
Framing of Car	0	0	0	0	0	0	0	0	0	0	0	0	0	0%	0	0%
Data/Operator Error	0	0	0	0	0	0	0	0	0	0	0	0	0	0%	0	0%
Exposure	0	0	0	0	0	0	0	0	0	0	0	0	0	0%	2	100%
Equipment Malfunction	0	0	0	1	0	0	0	0	0	0	0	0	1	25%	0	0%
ACS Expired	0	0	0	0	0	0	0	0	0	0	0	0	0	0%	0	0%
Total:	0	0	0	1	0	1	0	0	0	1	0	2	4	100%	3	100%
Summary Metrics																
Daily Average Vehicle Passes	138	108	84	127	97	73	62	49	67	126	111	65	Year to Date Monthly Average		2013 Monthly Average	
Average Issued Speed	0	0	17	0	17	0	17	0	0	18	14	24	92		88	
Average Issued Red Seconds	0	0	99.9	0	50.1	0	99.9	0	0	99.9	99.9	0.1	18		20	
Citation / Violation Issuance Rate	0%	0%	50%	0%	50%	0%	40%	0%	0%	17%	20%	25%	75		64.8	
Controllable Issuance Rate	0%	0%	100%	0%	100%	0%	100%	0%	0%	67%	100%	33%	34%		40%	
													83%		91%	



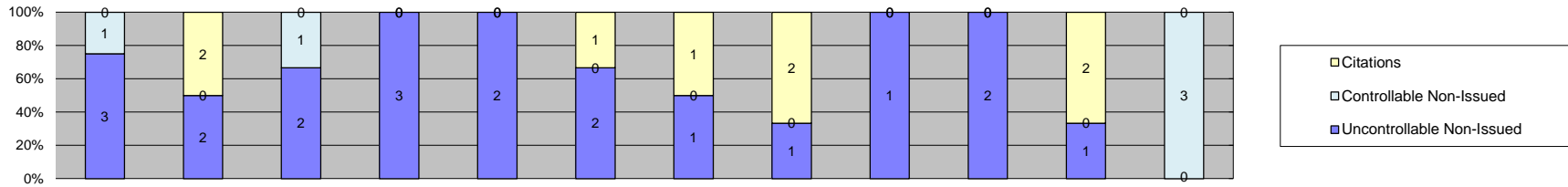
Los Angeles County MTA Gold Line
 Approach Summary Report
 Location 4127: EB to NB 1st @ Mission



Events	Jan-14	Feb-14	Mar-14	Apr-14	May-14	Jun-14	Jul-14	Aug-14	Sep-14	Oct-14	Nov-14	Dec-14	Year to Date Monthly Average		2013 Monthly Average	
													Quantity	%	Quantity	%
Non-Violations	899	655	679	669	723	545	752	926	797	876	1,055	1,030	801	89%	863	92%
Violations	88	106	89	86	94	98	86	115	84	98	100	120	97	11%	84	8%
Total:	987	761	768	755	817	643	838	1,041	881	974	1,155	1,150	898	100%	947	100%
Violations																
Uncontrollable Non-Issued	45	45	49	41	53	52	42	56	44	63	65	47	50	52%	47	57%
Controllable Non-Issued	4	14	1	4	8	9	8	17	3	2	5	66	12	12%	3	8%
Citations	39	47	39	41	33	37	36	42	37	33	30	7	35	36%	35	35%
Total:	88	106	89	86	94	98	86	115	84	98	100	120	97	100%	84	100%
Non-Violations																
Rear Axle Violation	0	0	1	0	0	0	0	0	0	0	0	0	1	0%	1	0%
Emergency Vehicle	14	8	8	6	9	6	15	19	15	7	14	5	11	1%	12	1%
Right Turn	0	0	0	0	0	0	0	0	0	0	0	0	0	0%	0	0%
No Violation Occurred	885	647	670	663	714	539	737	907	782	869	1,041	1,025	790	99%	852	99%
Total:	899	655	679	669	723	545	752	926	797	876	1,055	1,030	801	100%	864	100%
Uncontrollable Non-Issued Violations																
No Plate	7	10	9	7	13	11	9	10	10	15	6	3	9	17%	8	12%
Out of State Plate	0	2	2	1	1	2	2	2	3	0	2	3	2	4%	2	2%
Glare on Plate	0	1	1	1	5	6	0	0	1	0	3	0	3	5%	2	3%
Illegible Plate	15	13	13	9	7	1	6	16	6	10	9	26	11	20%	14	24%
Plate Obstructed	2	0	1	4	0	1	1	0	0	7	2	0	3	5%	2	3%
Windshield Glare	3	1	5	2	6	10	6	7	6	3	10	6	5	10%	4	8%
Driver Obstructed	5	1	4	1	4	2	3	5	5	4	3	0	3	6%	5	3%
Car Obstructed	0	0	0	1	0	1	1	1	2	0	0	0	1	2%	2	17%
No DMV Match Found	2	7	7	7	3	7	10	4	6	7	10	4	6	12%	6	10%
LASD Expired	0	0	0	0	0	0	0	0	0	0	0	0	0	0%	2	9%
LASD Return	11	10	7	8	14	11	4	11	5	17	20	5	10	19%	8	9%
Other	0	0	0	0	0	0	0	0	0	0	0	0	0	0%	0	0%
Total:	45	45	49	41	53	52	42	56	44	63	65	47	54	100%	52	100%
Controllable Non-Issued Violations																
Framing of Plate	0	0	1	1	2	1	3	1	0	0	0	0	2	4%	1	14%
Focus / Clarity of Plate	0	11	0	0	0	3	0	0	0	0	1	4	5	12%	1	0%
Dark Interior	2	1	0	3	6	3	2	0	2	1	3	20	4	11%	3	9%
Framing of Driver	0	0	0	0	0	0	1	0	0	0	0	0	1	2%	1	5%
Focus / Clarity of Driver	0	0	0	0	0	1	0	0	0	0	1	9	4	9%	0	5%
Framing of Car	2	0	0	0	0	0	0	0	0	0	0	0	2	5%	1	0%
Data/Operator Error	0	2	0	0	0	0	0	0	0	0	0	0	2	5%	2	5%
Exposure	0	0	0	0	0	1	1	16	1	1	0	0	4	10%	1	24%
Equipment Malfunction	0	0	0	0	0	0	1	0	0	0	0	33	17	42%	0	34%
ACS Expired	0	0	0	0	0	0	0	0	0	0	0	0	0	0%	0	5%
Total:	4	14	1	4	8	9	8	17	3	2	5	66	40	100%	10	100%
Summary Metrics																
Daily Average Vehicle Passes	1,294	1,970	1,726	1,670	1,522	1,506	1,390	1,587	1,768	1,584	1,976	1,780	Year to Date Monthly Average		2013 Monthly Average	
Average Issued Speed	22	21	22	22	21	21	21	22	21	21	21	20	1,648		1,737	
Average Issued Red Seconds	11.2	2.4	1.2	4.0	2.3	5.5	17.6	20.1	11.1	18.7	24.1	0.4	10		23.0	
Citation / Violation Issuance Rate	44%	44%	44%	48%	35%	38%	42%	37%	44%	34%	30%	6%	37%		42%	
Controllable Issuance Rate	91%	77%	98%	91%	80%	80%	82%	71%	93%	94%	86%	10%	79%		94%	



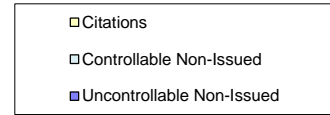
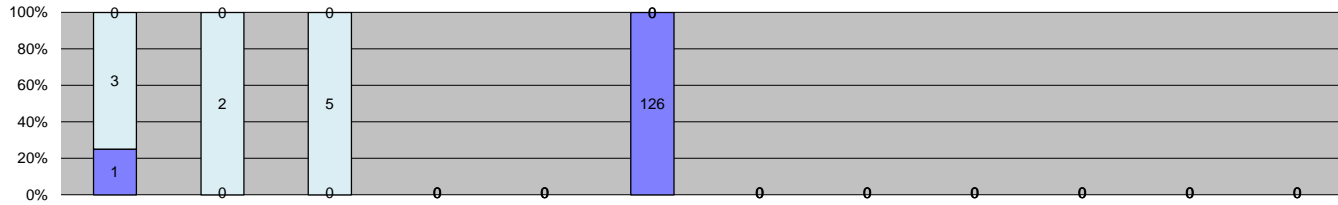
Los Angeles County MTA Gold Line
 Approach Summary Report
 Location 4129: WB to SB 1st @ Mission



Events	Jan-14	Feb-14	Mar-14	Apr-14	May-14	Jun-14	Jul-14	Aug-14	Sep-14	Oct-14	Nov-14	Dec-14	Year to Date Monthly Average		2013 Monthly Average	
													Quantity	%	Quantity	%
Non-Violations	682	538	667	612	604	525	648	641	631	750	567	657	627	100%	487	98%
Violations	4	4	3	3	2	3	2	3	1	2	3	3	3	0%	12	2%
Total:	686	542	670	615	606	528	650	644	632	752	570	660	630	100%	500	100%
Violations																
Uncontrollable Non-Issued	3	2	2	3	2	2	1	1	1	2	1	0	2	36%	2	82%
Controllable Non-Issued	1	0	1	0	0	0	0	0	0	0	0	3	2	33%	51	0%
Citations	0	2	0	0	0	1	1	2	0	0	2	0	2	31%	2	18%
Total:	4	4	3	3	2	3	2	3	1	2	3	3	5	100%	54	100%
Non-Violations																
Rear Axle Violation	0	0	0	0	0	0	0	0	0	0	0	0	0	0%	1	0%
Emergency Vehicle	0	0	0	1	0	1	3	1	4	0	1	0	2	0%	2	0%
Right Turn	0	0	0	0	0	0	0	0	0	0	0	0	0	0%	0	0%
No Violation Occurred	682	538	667	611	604	524	645	640	627	750	566	657	626	100%	486	100%
Total:	682	538	667	612	604	525	648	641	631	750	567	657	628	100%	489	100%
Uncontrollable Non-Issued Violations																
No Plate	2	0	0	1	0	0	0	1	0	1	0	0	1	18%	1	8%
Out of State Plate	0	0	0	0	0	0	0	0	0	0	0	0	0	0%	1	6%
Glare on Plate	0	0	0	0	0	0	0	0	0	0	0	0	0	0%	0	6%
Illegible Plate	1	1	0	0	0	0	0	0	0	0	0	0	1	14%	1	7%
Plate Obstructed	0	0	0	0	1	0	0	0	0	0	0	0	1	14%	0	0%
Windshield Glare	0	0	0	0	0	0	0	0	0	0	0	0	0	0%	2	6%
Driver Obstructed	0	0	0	0	0	1	0	0	0	0	1	0	1	14%	1	6%
Car Obstructed	0	0	0	0	0	0	0	0	0	0	0	0	0	0%	1	42%
No DMV Match Found	0	1	0	0	1	1	0	0	1	1	0	0	1	14%	1	7%
LASD Expired	0	0	0	0	0	0	0	0	0	0	0	0	0	0%	1	6%
LASD Return	0	0	2	2	0	0	1	0	0	0	0	0	2	24%	1	6%
Other	0	0	0	0	0	0	0	0	0	0	0	0	0	0%	0	0%
Total:	3	2	2	3	2	2	1	1	1	2	1	0	7	100%	10	100%
Controllable Non-Issued Violations																
Framing of Plate	0	0	0	0	0	0	0	0	0	0	0	0	0	0%	0	0
Focus / Clarity of Plate	0	0	0	0	0	0	0	0	0	0	0	0	0	0%	0	0
Dark Interior	0	0	0	0	0	0	0	0	0	0	0	0	0	0%	0	0
Framing of Driver	0	0	0	0	0	0	0	0	0	0	0	0	0	0%	0	0
Focus / Clarity of Driver	0	0	0	0	0	0	0	0	0	0	0	0	0	0%	0	0
Framing of Car	0	0	0	0	0	0	0	0	0	0	0	0	0	0%	0	0
Data/Operator Error	0	0	0	0	0	0	0	0	0	0	0	2	2	50%	0	0
Exposure	1	0	1	0	0	0	0	0	0	0	0	0	1	25%	0	0
Equipment Malfunction	0	0	0	0	0	0	0	0	0	0	0	1	1	25%	51	0
ACS Expired	0	0	0	0	0	0	0	0	0	0	0	0	0	0%	0	0
Total:	1	0	1	0	0	0	0	0	0	0	0	3	4	100%	51	0%
Summary Metrics																
Daily Average Vehicle Passes	71	69	142	134	104	140	130	121	101	94	67	59	Year to Date Monthly Average		2013 Monthly Average	
Average Issued Speed	0	17	0	0	0	23	26	17	0	0	18	0	103		124	
Average Issued Red Seconds	0	99.9	0	0	0	0.2	99.9	99.9	0	0	99.9	0	80		89.4	
Citation / Violation Issuance Rate	0%	50%	0%	0%	0%	33%	50%	67%	0%	0%	67%	0%	53%		39%	
Controllable Issuance Rate	0%	100%	0%	0%	0%	100%	100%	100%	0%	0%	100%	0%	100%		82%	



Los Angeles County MTA Gold Line
 Approach Summary Report
 Location 4137: SB to EB Alameda @ Temple



Events	Jan-14	Feb-14	Mar-14	Apr-14	May-14	Jun-14	Jul-14	Aug-14	Sep-14	Oct-14	Nov-14	Dec-14	Year to Date Monthly Average		2013 Monthly Average	
													Quantity	%	Quantity	%
Non-Violations	291	165	226	0	0	52	0	0	0	0	0	0	184	84%	50	82%
Violations	4	2	5	0	0	126	0	0	0	0	0	0	34	16%	23	18%
Total:	295	167	231	0	0	178	0	0	0	0	0	0	218	100%	73	100%
Violations																
Uncontrollable Non-Issued	1	0	0	0	0	126	0	0	0	0	0	0	64	95%	22	86%
Controllable Non-Issued	3	2	5	0	0	0	0	0	0	0	0	0	3	5%	0	0%
Citations	0	0	0	0	0	0	0	0	0	0	0	0	0	0%	2	14%
Total:	4	2	5	0	0	126	0	0	0	0	0	0	67	100%	24	100%
Non-Violations																
Rear Axle Violation	2	2	0	0	0	0	0	0	0	0	0	0	2	1%	2	4%
Emergency Vehicle	2	5	6	0	0	1	0	0	0	0	0	0	4	2%	5	10%
Right Turn	0	0	0	0	0	0	0	0	0	0	0	0	0	0%	0	0%
No Violation Occurred	287	158	220	0	0	51	0	0	0	0	0	0	179	97%	44	87%
Total:	291	165	226	0	0	52	0	0	0	0	0	0	185	100%	51	100%
Uncontrollable Non-Issued Violations																
No Plate	1	0	0	0	0	0	0	0	0	0	0	0	1	1%	1	4%
Out of State Plate	0	0	0	0	0	0	0	0	0	0	0	0	0	0%	1	3%
Glare on Plate	0	0	0	0	0	0	0	0	0	0	0	0	0	0%	1	3%
Illegible Plate	0	0	0	0	0	0	0	0	0	0	0	0	0	0%	1	0%
Plate Obstructed	0	0	0	0	0	0	0	0	0	0	0	0	0	0%	0	3%
Windshield Glare	0	0	0	0	0	0	0	0	0	0	0	0	0	0%	2	5%
Driver Obstructed	0	0	0	0	0	0	0	0	0	0	0	0	0	0%	1	0%
Car Obstructed	0	0	0	0	0	0	0	0	0	0	0	0	0	0%	2	3%
No DMV Match Found	0	0	0	0	0	0	0	0	0	0	0	0	0	0%	1	5%
LASD Expired	0	0	0	0	0	0	0	0	0	0	0	0	0	0%	0	3%
LASD Return	0	0	0	0	0	0	0	0	0	0	0	0	0	0%	2	6%
Other	0	0	0	0	0	126	0	0	0	0	0	0	126	99%	24	62%
Total:	1	0	0	0	0	126	0	0	0	0	0	0	127	100%	36	100%
Controllable Non-Issued Violations																
Framing of Plate	0	0	0	0	0	0	0	0	0	0	0	0	0	0%	0	0
Focus / Clarity of Plate	0	0	0	0	0	0	0	0	0	0	0	0	0	0%	0	0
Dark Interior	0	0	0	0	0	0	0	0	0	0	0	0	0	0%	0	0
Framing of Driver	0	0	0	0	0	0	0	0	0	0	0	0	0	0%	0	0
Focus / Clarity of Driver	0	0	0	0	0	0	0	0	0	0	0	0	0	0%	0	0
Framing of Car	0	0	0	0	0	0	0	0	0	0	0	0	0	0%	0	0
Data/Operator Error	0	0	0	0	0	0	0	0	0	0	0	0	0	0%	0	0
Exposure	0	0	0	0	0	0	0	0	0	0	0	0	0	0%	0	0
Equipment Malfunction	3	2	5	0	0	0	0	0	0	0	0	0	3	100%	0	0
ACS Expired	0	0	0	0	0	0	0	0	0	0	0	0	0	0%	0	0
Total:	3	2	5	0	0	0	0	0	0	0	0	0	3	100%	0	0%
Summary Metrics																
Daily Average Vehicle Passes	156	211	199	234	272	300	199	264	239	206	264	152	Year to Date Monthly Average		2013 Monthly Average	
Average Issued Speed	0	0	0	0	0	0	0	0	0	0	0	0	225		266	
Average Issued Red Seconds	0	0	0	0	0	0	0	0	0	0	0	0	0		304.7	
Citation / Violation Issuance Rate	0%	0%	0%	0%	0%	0%	0%	0%	0%	0%	0%	0%	0%		14%	
Controllable Issuance Rate	0%	0%	0%	0%	0%	0%	0%	0%	0%	0%	0%	0%	0%		100%	



Calls For Information

Reason for Call	Jan-14	Feb-14	Mar-14	Apr-14	May-14	Jun-14	Jul-14	Aug-14	Sep-14	Oct-14	Nov-14	Dec-14	3 Month Average	Year to Date Average	Year to Date Total	2013 Average
<i>Appointment</i>	5	3	7	4	7	7	5	6	8	4	5	7	6	6	68	2
<i>Bail</i>	9	3	2	4	8	2	6	5	3	2	5	6	3	5	55	4
<i>Complaint</i>	0	0	0	0	0	0	0	0	0	1	0	0	0	1	1	0
<i>Contest Violation</i>	9	8	9	9	11	11	10	6	8	5	9	9	7	9	104	8
<i>Courtesy Notice</i>	0	0	1	0	1	0	0	1	0	0	1	0	0	1	4	1
<i>Explain Citation</i>	2	8	1	3	2	2	1	1	3	1	2	1	2	2	27	5
<i>Explain Court</i>	0	0	0	0	0	1	0	0	1	0	0	1	0	1	3	2
<i>Explain the Project</i>	0	0	0	0	0	0	0	0	0	0	0	0	0	0	0	1
<i>Extension</i>	0	1	6	0	1	2	0	1	0	3	0	0	1	2	14	2
<i>Other</i>	0	0	0	0	0	0	0	0	0	0	0	0	0	0	0	0
<i>Affidavit of Non-Liability</i>	5	9	9	11	8	2	5	7	3	4	2	1	3	6	66	7
<i>Affidavit of Non-Liability Status</i>	1	1	1	1	2	1	1	1	2	1	1	0	1	1	13	0
<i>Traffic School</i>	0	2	0	0	0	0	0	0	1	0	0	2	0	2	5	1
Total Calls	31	35	36	32	40	28	28	28	29	21	25	27	25	35	360	33
Appointments Scheduled	2	4	6	2	5	7	6	4	5	5	3	2	4	4	51	2
Affidavits of Non-Liability Processed	34	39	41	51	39	57	62	37	52	58	37	55	49	47	562	57
Court Packets Prepared	47	42	49	66	42	53	49	56	60	58	56	49	58	52	627	38



**Los Angeles County MTA Gold Line
Monthly Citation Yield - By Location
December 2014**

Direction	Location	Code	Days of Enforcement	Events	Violations	Citations	Yield*
EB to NB	3rd & Civic Center	4007	31	824	15	1	0.03
WB to SB	3rd & La Verne	4009	31	165	29	2	0.06
EB to NB	3rd & Mednik	4017	31	159	18	2	0.06
WB to SB	3rd & Mednik	4019	31	239	13	3	0.10
EB to NB	3rd & Arizona	4027	31	607	11	0	0.00
WB to SB	3rd & Arizona	4029	31	167	9	3	0.10
EB to NB	3rd and McDonnell	4037	31	626	21	2	0.06
WB to SB	3rd and McDonnell	4039	31	277	12	4	0.13
EB to NB	3rd & Ford	4047	31	412	60	10	0.32
WB to SB	3rd & Ford	4049	31	208	6	2	0.06
EB to NB	3rd & Eastern	4057	31	294	181	28	0.90
WB to SB	3rd & Eastern	4059	31	108	9	0	0.00
WB to SB	3rd & Downey	4069	31	443	98	26	0.84
EB to NB	3rd & Gage	4077	31	139	35	10	0.32
WB to SB	3rd & Gage	4079	31	412	72	23	0.74
EB to NB	3rd & Rowan	4083	31	565	26	2	0.06
WB to SB	3rd & Rowan	4085	31	24	12	2	0.06
EB to NB	1st & Lorena	4087	31	186	11	5	0.16
WB to SB	1st & Lorena	4089	31	80	20	5	0.16
EB to NB	1st & Clarence	4097	31	546	3	0	0.00
WB to SB	1st & Clarence	4099	31	882	6	0	0.00
WB to SB	1st & Utah	4109	31	305	0	0	0.00
WB to SB	1st & Anderson	4119	31	113	4	1	0.03
EB to NB	1st & Mission	4127	31	1,150	120	7	0.23
WB to SB	1st & Mission	4129	31	660	3	0	0.00
SB to EB	Alameda @ Temple	4137	31	0	0	0	0.00
Totals			31	9,591	794	138	4.45

*Yield is the number of citations issued per day of enforcement.



Disposition Type	Jan-14		Feb-14		Mar-14		Apr-14		May-14		Jun-14		Jul-14		Aug-14		Sep-14		Oct-14		Nov-14		Dec-14		3 Month Average		YTD Total		YTD Average		2013 Average	
	Count	Amount Paid	Count	Amount Paid	Count	Amount Paid	Count	Amount Paid	Count	Amount Paid	Count	Amount Paid	Count	Amount Paid	Count	Amount Paid	Count	Amount Paid	Count	Amount Paid	Count	Amount Paid	Count	Amount Paid	Count	Amount Paid	Count	Amount Paid	Count	Amount Paid	Count	Amount Paid
<i>Bail Forfeiture</i>	42	\$22,369	48	\$24,032	43	\$21,556	72	\$37,115	46	\$23,352	46	\$23,434	50	\$28,271	39	\$20,192	44	\$25,176	68	\$39,181	54	\$35,171	72	\$40,111	55	\$33,176	624	\$339,960	52	\$28,330	48	\$24,193
<i>Fine Paid</i>	24	\$12,595	21	\$10,491	19	\$9,521	39	\$19,952	18	\$8,997	26	\$13,930	22	\$10,291	24	\$16,271	19	\$14,261	26	\$19,122	22	\$16,271	31	\$20,192	22	\$16,551	291	\$171,894	24	\$14,325	22	\$10,326
<i>Department Void</i>	0	\$0	0	\$0	0	\$0	0	\$0	0	\$0	0	\$0	0	\$0	0	\$0	0	\$0	0	\$0	0	\$0	0	\$0	0	\$0	0	\$0	0	\$0	0	\$0
<i>Not Guilty</i>	52	\$0	75	\$0	65	\$0	106	\$0	121	\$0	78	\$0	101	\$0	80	\$0	92	\$0	101	\$0	97	\$0	99	\$0	97	\$0	1,067	\$0	89	\$0	68	\$0
<i>Section D Void</i>	34	\$0	39	\$0	41	\$0	51	\$0	39	\$0	57	\$0	45	\$0	37	\$0	41	\$0	49	\$0	39	\$0	45	\$0	43	\$0	517	\$0	43	\$0	57	\$0
<i>Traffic School</i>	37	\$17,793	28	\$13,669	31	\$15,641	52	\$25,736	56	\$27,988	55	\$27,740	62	\$33,101	59	\$29,101	66	\$37,181	62	\$33,011	57	\$26,171	50	\$23,141	62	\$32,121	615	\$310,273	51	\$25,856	42	\$19,293
Court Gross Total	189	\$52,757.00	211	\$48,192	199	\$46,718.00	320	\$82,803.00	280	\$60,337	262	\$65,104	280	\$71,663.00	239	\$65,564.00	262	\$76,618.00	306	\$91,314.00	269	\$77,613.00	297	\$83,444.00	279	\$81,848	3,114	\$822,127	260	\$68,511	236	\$53,812
MTA Gross Total*	103	\$14,936.31	97	\$14,034	93	\$13,474.77	163	\$23,606.01	120	\$17,463	127	\$18,461	134	\$19,497.42	122	\$17,763.48	129	\$18,799.83	156	\$22,650.24	133	\$19,330.41	153	\$22,163.43	139	\$20,185	1,530	\$222,179	128	\$18,515	112	\$16,179

*Logic built on following model (assuming the new 2009 fine and fee structure):
 MTA receives \$146.31 of \$446.00 citation where bail forfeiture and fine paid occurs
 MTA receives \$146.03 of \$509.00 citation when traffic school option is paid for



**Los Angeles County MTA Gold Line
Performance Report
December 2014**

	<u>Total</u> <u>Events</u>	<u>Non</u> <u>Violations</u>	<u>Potential</u> <u>Violations</u>	<u>Percent</u> <u>Citable</u>	<u>Non Issued</u> <u>Violations</u>	<u>No DMV</u> <u>Match</u>	<u>Police/</u> <u>Client</u> <u>Rejected</u>	<u>Citations</u> <u>Issued</u>	<u>DMV</u> <u>Match</u> <u>Rate</u>	<u>Issuance</u> <u>Rate</u>	<u>Dispo</u> <u>Paid</u>	<u>Pay</u> <u>Rate</u>	<u>Closed</u> <u>No Pay</u>	<u>Pending</u>	<u>Closure</u> <u>Rate</u>	<u>Court</u> <u>Packs</u>	<u>Contest</u> <u>Rate</u>
Dec-09	5,805	5,387	418	7.2%	258	29	14	160	85.7%	38.3%	91	56.9%	34	35	78.1%	0	-
Jan-10	12,371	11,195	1,176	9.5%	843	65	40	333	85.2%	28.3%	158	47.4%	124	51	84.7%	0	-
Feb-10	11,564	10,651	913	7.9%	604	58	19	309	85.0%	33.8%	148	47.9%	119	42	86.4%	0	-
Mar-10	13,350	12,264	1,086	8.1%	739	79	26	347	82.5%	32.0%	160	46.1%	131	56	83.9%	0	-
Apr-10	14,976	13,798	1,178	7.9%	809	68	46	369	85.9%	31.3%	153	41.5%	162	54	85.4%	4	-
May-10	13,007	11,845	1,162	8.9%	855	70	38	307	83.1%	26.4%	140	45.6%	124	43	86.0%	3	-
Jun-10	13,058	11,782	1,276	9.8%	895	66	72	381	87.3%	29.9%	169	44.4%	164	48	87.4%	4	4.4%
Jul-10	13,229	11,896	1,333	10.1%	1000	62	78	333	86.9%	25.0%	138	41.4%	144	51	84.7%	26	16.5%
Aug-10	13,811	12,469	1,342	9.7%	1053	83	70	289	81.2%	21.5%	116	40.1%	125	48	83.4%	0	0.0%
Sep-10	14,099	12,605	1,494	10.6%	1090	69	40	404	86.5%	27.0%	217	53.7%	116	71	82.4%	2	1.3%
Oct-10	12,325	11,102	1,223	9.9%	882	75	27	341	83.1%	27.9%	168	49.3%	101	72	78.9%	3	2.0%
Nov-10	12,575	11,261	1,314	10.4%	922	72	49	392	86.0%	29.8%	203	51.8%	105	84	78.6%	16	11.4%
Dec-10	14,143	12,889	1,254	8.9%	933	61	20	321	84.8%	25.6%	158	49.2%	106	57	82.2%	84	49.7%
Jan-11	12,708	11,805	903	7.1%	565	78	16	338	81.9%	37.4%	142	42.0%	149	47	86.1%	38	27.5%
Feb-11	12,856	11,969	887	6.9%	559	72	16	328	82.7%	37.0%	131	39.9%	143	54	83.5%	27	23.3%
Mar-11	14,005	12,975	1,030	7.4%	709	64	21	321	84.2%	31.2%	153	47.7%	106	62	80.7%	23	10.6%
Apr-11	13,373	12,307	1,066	8.0%	719	82	102	347	84.6%	32.6%	160	46.1%	107	80	76.9%	39	23.2%
May-11	13,666	12,487	1,179	8.6%	814	104	112	365	82.1%	31.0%	150	41.1%	118	97	73.4%	35	17.2%
Jun-11	12,946	11,982	964	7.4%	672	82	104	292	82.8%	30.3%	112	38.4%	71	109	62.7%	43	27.2%
Jul-11	11,546	10,599	947	8.2%	667	71	135	280	85.4%	29.6%	101	36.1%	75	104	62.9%	62	43.7%
Aug-11	9,015	8,185	830	9.2%	554	33	127	276	92.4%	33.3%	112	40.6%	79	85	69.2%	55	42.0%
Sep-11	9,303	8,386	917	9.9%	686	104	125	231	77.4%	25.2%	116	50.2%	39	76	67.1%	43	28.1%
Oct-11	10,383	9,500	883	8.5%	669	61	120	214	84.6%	24.2%	100	46.7%	41	73	65.9%	36	22.5%
Nov-11	9,455	8,859	596	6.3%	410	63	92	186	81.5%	31.2%	64	34.4%	38	84	54.8%	43	28.7%
Dec-11	12,822	11,973	849	6.6%	605	64	141	244	85.7%	28.7%	81	33.2%	44	119	51.2%	27	24.1%
Jan-12	10,553	9,795	758	7.2%	592	60	111	166	82.2%	21.9%	62	37.3%	51	53	68.1%	35	34.7%
Feb-12	8,612	7,696	916	10.6%	696	73	124	220	82.5%	24.0%	77	35.0%	62	81	63.2%	28	25.0%
Mar-12	9,115	8,201	914	10.0%	743	82	125	171	78.3%	18.7%	57	33.3%	47	67	60.8%	20	17.2%
Apr-12	9,037	8,236	801	8.9%	617	69	92	184	80.0%	23.0%	55	29.9%	55	74	59.8%	46	46.0%
May-12	9,202	8,355	847	9.2%	676	71	128	171	80.8%	20.2%	49	28.7%	55	67	60.8%	49	76.6%
Jun-12	8,007	7,372	635	7.9%	422	63	111	213	83.7%	33.5%	42	19.7%	55	116	45.5%	24	37.5%

Jul-12	9,645	8,903	742	7.7%	508	60	83	234	84.1%	31.5%	61	26.1%	64	109	53.4%	31	48.4%
Aug-12	10,021	9,172	849	8.5%	570	78	84	279	82.3%	32.9%	75	26.9%	86	118	57.7%	37	57.8%
Sep-12	9,192	8,486	706	7.7%	474	100	97	232	76.7%	32.9%	50	21.6%	72	110	52.6%	30	46.9%
Oct-12	9,961	9,186	775	7.8%	481	101	66	294	78.1%	37.9%	64	21.8%	106	124	57.8%	51	79.7%
Nov-12	8,916	8,280	636	7.1%	455	88	40	181	71.5%	28.5%	42	23.2%	50	89	50.8%	37	57.8%
Dec-12	8,392	7,857	535	6.4%	404	74	46	131	70.5%	24.5%	37	28.2%	35	59	55.0%	35	31.3%
Jan-13	8,216	7,631	585	7.1%	364	73	61	221	79.4%	37.8%	48	21.7%	78	95	57.0%	64	55.2%
Feb-13	8,254	7,562	692	8.4%	426	79	70	266	81.0%	38.4%	79	29.7%	80	107	59.8%	40	40.0%
Mar-13	9,445	8,677	768	8.1%	509	98	71	259	77.1%	33.7%	79	30.5%	90	90	65.3%	54	84.4%
Apr-13	9,469	8,692	777	8.2%	552	92	91	225	77.5%	29.0%	74	32.9%	51	100	55.6%	43	43.0%
May-13	10,045	9,333	712	7.1%	492	80	86	220	79.3%	30.9%	59	26.8%	65	96	56.4%	57	89.1%
Jun-13	6,223	5,781	442	7.1%	250	51	56	192	82.9%	43.4%	61	31.8%	49	82	57.3%	19	29.7%
Jul-13	8,808	8,179	629	7.1%	464	76	95	165	77.4%	26.2%	43	26.1%	46	76	53.9%	20	17.9%
Aug-13	9,858	8,989	869	8.8%	693	101	116	176	74.3%	20.3%	48	27.3%	32	96	45.5%	17	14.7%
Sep-13	9,597	8,760	837	8.7%	648	113	173	189	76.2%	22.6%	33	17.5%	56	100	47.1%	17	17.0%
Oct-13	10,019	9,183	836	8.3%	630	92	88	206	76.2%	24.6%	34	16.5%	34	138	33.0%	33	51.6%
Nov-13	8,332	7,815	517	6.2%	319	77	68	198	77.6%	38.3%	45	22.7%	26	127	35.9%	35	54.7%
Dec-13	9,083	8,503	580	6.4%	442	76	100	138	75.8%	23.8%	24	17.4%	9	105	23.9%	56	87.5%
Jan-14	10,641	9,971	670	6.3%	425	64	78	245	83.5%	36.6%	21	8.6%	39	185	24.5%	47	46.5%
Feb-14	8,699	8,103	596	6.9%	410	66	85	186	80.4%	31.2%	19	10.2%	5	162	12.9%	42	37.5%
Mar-14	10,012	9,357	655	6.5%	426	77	102	229	81.1%	35.0%	16	7.0%	12	201	12.2%	49	42.2%
Apr-14	10,176	9,438	738	7.3%	500	85	113	238	80.5%	32.2%	12	5.0%	10	216	9.2%	66	66.0%
May-14	10,217	9,406	811	7.9%	574	74	118	237	82.8%	29.2%	14	5.9%	13	210	11.4%	42	65.6%
Jun-14	10,740	9,854	886	8.2%	643	104	76	243	75.4%	27.4%	16	6.6%	12	215	11.5%	53	65.4%
Jul-14	10,377	9,307	1,070	10.3%	797	88	82	273	80.1%	25.5%	21	7.7%	11	241	11.7%	49	79.0%
Aug-14	11,759	10,929	830	7.1%	551	84	115	279	82.4%	33.6%	13	4.7%	5	261	6.5%	56	72.7%
Sep-14	10,129	9,353	776	7.7%	506	95	105	270	79.8%	34.8%	9	3.3%	2	259	4.1%	60	105.3%
Oct-14	9,615	8,690	925	9.6%	659	137	180	266	76.5%	28.8%	6	2.3%	1	259	2.6%	58	105.5%
Nov-14	8,918	8,119	799	9.0%	612	119	128	187	72.6%	23.4%	3	1.6%	1	183	2.1%	56	114.3%
Dec-14	9,591	8,797	794	8.3%	656	71	137	138	79.5%	17.4%	0	0.0%	0	138	0.0%	49	116.7%
Total	625,634	536,944	47,934	14.2%	33,917	4,132	4,404	14,017	81.7%	29.2%	4,837	34.0%	4,010	5,170	62.1%	1790	38.16%

* Pay Rate and Closure Rate percentages are based on a 4 month lag

** Contested Citations take into account a 6 month lag from the violation date to the trail date.