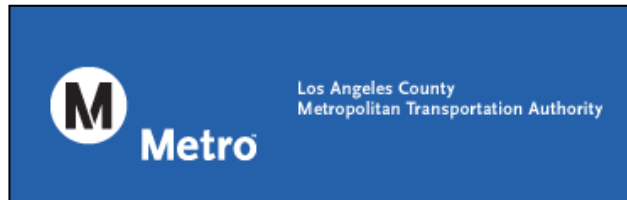


LOS ANGELES COUNTY
METROPOLITAN TRANSPORTATION AUTHORITY

Photo Enforcement Services

Monthly Update



2019



Prepared by: Conduent State and Local Solutions
Confidential

Definitions

Event: Using a photo enforcement system, an “event” is the photo and video capture of license plate and face of motorists who violate traffic signals. Not all “Events” end up being a Violation. For example, if the auto breached the limit line of the leading edge of the crosswalk and does not follow-through with the move (the auto stops), the camera will take only 1 photo (an event), that will be dismissed as a non-violation. Camera Test Shots performed by Field Service Technicians are also considered an “event” since the camera and flash activated. An “Event” is made up by both violations and non-violations.

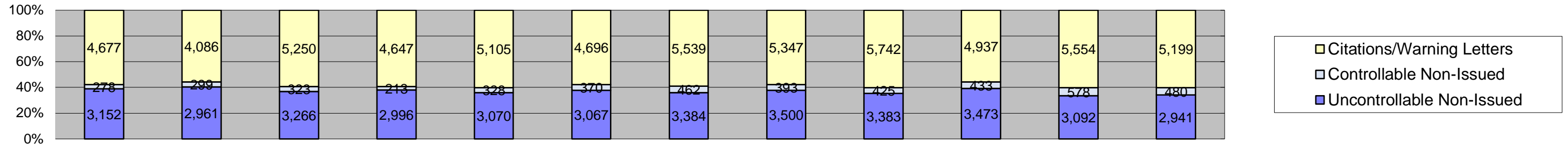
Violation: Following MTA Red Light Photo Enforcement Business Rules, a “violation” occurs when the entire vehicle is behind the stop bar (or in the absence of stop bar use the leading edge of the crosswalk) in the first photo and then in the second photo, the rear tire must be on or in front of the trailing crosswalk line or stop bar (in the absence of a crosswalk). If the business rules are not valid for an event, it will be categorized a non-violation.

Citation: A police “citation” is official documentation stating that an individual has been made aware of a violation by an officer of the law. The citation must contain: registered owner name and address, license plate of vehicle, date, time, and location of offense, date, time and location of court appearance, date of birth, Driver’s license number, and date of issue.

Vehicle passes: is the term we use for the number of vehicles that traverse an intersection.



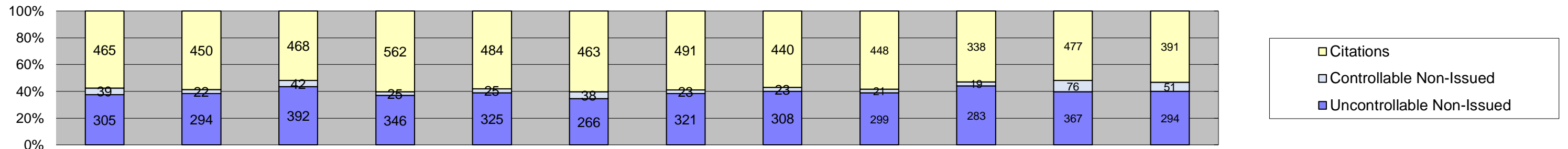
Los Angeles County MTA
Approach Summary Report
All Locations



Events	Year to Date Monthly Average												Quantity	%
	Jan-19	Feb-19	Mar-19	Apr-19	May-19	Jun-19	Jul-19	Aug-19	Sep-19	Oct-19	Nov-19	Dec-19		
Non-Violations	44,158	41,657	46,246	45,164	45,101	41,383	41,721	43,009	38,802	44,974	41,790	42,488	43,041	83%
Violations	8,107	7,346	8,839	7,807	8,503	8,133	9,385	9,240	9,550	8,843	9,224	8,620	8,633	17%
Total:	52,265	49,003	55,085	52,971	53,604	49,516	51,106	52,249	48,352	53,817	51,014	51,108	51,674	100%
Violations														
Uncontrollable Non-Issued	3,152	2,961	3,266	2,996	3,070	3,067	3,384	3,500	3,383	3,473	3,092	2,941	3,190	37%
Controllable Non-Issued	278	299	323	213	328	370	462	393	425	433	578	480	382	4%
Citations/Warning Letters	4,677	4,086	5,250	4,647	5,105	4,696	5,539	5,347	5,742	4,937	5,554	5,199	5,065	59%
Total:	8,107	7,346	8,839	7,856	8,503	8,133	9,385	9,240	9,550	8,843	9,224	8,620	8,637	100%
Non-Violations														
Emergency Vehicle Non-Issuable	292	250	301	256	161	250	296	305	237	261	141	174	244	1%
Emergency Vehicle PD	13	11	5	5	5	2	2	9	6	3	7	3	6	0%
Intersection Control in Progress-PD	1	0	4	14	0	1	1	1	3	6	0	0	4	0%
Gate Down/ No Train	0	0	0	0	0	0	0	0	0	0	0	0	0	0%
No Violation Occurred	22,165	20,964	23,644	21,384	21,507	21,268	21,056	22,229	19,586	23,651	19,734	19,079	21,356	50%
Rear Axle Activation	130	164	264	253	204	199	216	265	253	251	232	176	217	1%
Right Turn- No Violation	64	15	16	10	49	80	43	61	52	53	50	66	47	0%
Test Shot	10,183	11,020	11,814	11,373	11,132	10,526	10,951	10,554	9,638	10,222	9,798	10,171	10,615	25%
Train Activation	11,292	9,209	10,177	11,841	12,037	9,053	9,147	9,584	9,023	10,517	11,828	12,813	10,543	24%
Amber Time Low	4	0	0	0	2	0	2	1	1	0	0	1	2	0%
Vehicle Stopped- PD	14	24	21	28	4	4	7	0	3	10	0	5	12	0%
Total:	44,158	41,657	46,246	45,164	45,101	41,383	41,721	43,009	38,802	44,974	41,790	42,488	43,045	100%
Uncontrollable Non-Issued Violations														
Administrative Dismissal	0	0	0	0	0	0	0	0	0	0	0	0	0	0%
Address/CDL/DOB Match Fail	1	1	43	161	16	21	31	18	0	0	0	0	37	1%
Car Obstructed	90	99	94	74	91	73	115	119	156	138	108	121	107	3%
Conditions Beyond Control	0	1	0	0	0	0	0	0	0	0	0	0	1	0%
Driver Identity Unclear	33	42	42	53	26	53	79	100	84	70	44	42	56	2%
Driver Obstructed	204	221	194	184	176	236	227	302	279	195	220	272	226	7%
Exposed	0	0	0	1	0	0	0	0	0	1	0	0	1	0%
Emergency Vehicle Issue	13	8	2	14	9	42	64	60	36	49	32	53	32	1%
Glare on Plate	201	151	125	122	124	106	149	143	138	171	172	112	143	4%
Glare on Windshield	124	155	236	211	202	277	294	286	318	235	184	114	220	7%
Illegible Plate	35	39	61	43	63	48	55	54	80	78	79	77	59	2%
Interest of Justice- PD	0	1	0	0	0	7	0	6	4	0	15	1	6	0%
Image Quality- PD	23	9	8	18	3	13	8	23	13	4	1	1	10	0%
Issuance Criteria Not Met- PD	0	1	0	8	1	0	1	1	0	2	1	1	2	0%
No Warning Sign	0	0	0	0	0	0	0	0	0	0	0	0	0	0%
No Plate	1,356	1,196	1,303	1,235	1,225	1,139	1,183	1,211	1,130	1,173	1,065	990	1,184	37%
No Speed Captured	0	0	5	0	0	0	0	0	0	0	0	0	5	0%
Obstruction In Photo- PD	190	122	108	84	61	85	178	108	123	206	110	190	130	4%
Out of State	152	153	181	186	173	178	191	227	226	179	156	151	179	6%
Plate Obstructed	117	79	95	103	82	80	114	153	142	150	152	112	115	4%
Short Yellow- PD	2	0	0	0	1	0	1	0	0	0	1	1	1	0%
Third Party Damage	0	23	0	0	1	0	0	6	0	0	0	0	10	0%
TSB Expired	8	11	0	4	52	3	12	1	0	0	2	2	11	0%
TSB No Hit	603	649	769	495	764	706	682	682	654	822	750	701	690	21%
Total:	3,152	2,961	3,266	2,996	3,070	3,067	3,384	3,500	3,383	3,473	3,092	2,941	3,223	100%
Controllable Non-Issued Violations														
Cnduent Expire	1	2	2	0	5	0	6	8	0	0	0	1	4	1%
Clarity of Plate	0	0	0	1	9	12	1	10	24	9	23	29	13	3%
Clarity of Driver	0	0	0	0	0	0	0	0	0	2	3	0	3	1%
Dark Interior	68	122	116	94	115	94	99	120	150	160	159	180	123	31%
Data Box Related- PD	0	0	0	0	0	0	0	1	0	0	0	0	1	0%
Data Box Data Error- PD	0	0	0	0	0	0	0	0	0	0	1	0	1	0%
Data Entry Error	21	14	19	26	31	21	21	36	34	43	38	17	27	7%
Exposed	0	0	0	0	0	9	16	3	8	4	21	18	11	3%
Equipment Malfunction	102	107	109	14	81	158	259	146	127	141	246	162	138	35%
Framing- PD	0	1	0	0	0	0	0	0	0	0	0	0	1	0%
Framing of Car	77	49	63	68	53	61	43	44	57	45	57	52	56	14%
Framing of Driver	6	3	7	5	10	7	8	7	13	5	8	5	7	2%
Operator Error	0	0	0	0	0	0	0	0	0	0	0	0	0	0%
Framing of Plate	3	1	6	4	23	8	9	18	11	24	20	16	12	3%
Reject Expired	0	0	0	0	0	0	0	0	1	0	0	0	1	0%
Speed Not Determined	0	0	1	1	1	0	0	0	0	0	2	0	1	0%
Total:	278	299	323	213	328	370	462	393	425	433	578	480	398	100%
Summary Metrics														
Daily Average Vehicle Passes	0	0	0	0	0	0	0	0	0	0	0	0	0	
Average Issued Speed	13	10	10	10	10	10	10	10	10	10	10	10	10	
Average Issued Red Seconds	215.5	138.9	174.3	190.8	124.3	134.1	139.7	385.2	103.4	153.3	246.1	120.0	177.1	
Citation / Violation Issuance Rate	58%	56%	59%	59%	60%	58%	59%	58%	60%	56%	60%	60%	59%	
Controllable Issuance Rate	94%	93%	94%	96%	94%	93%	92%	93%	93%	92%	91%	92%	93%	



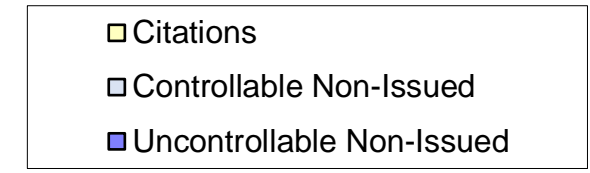
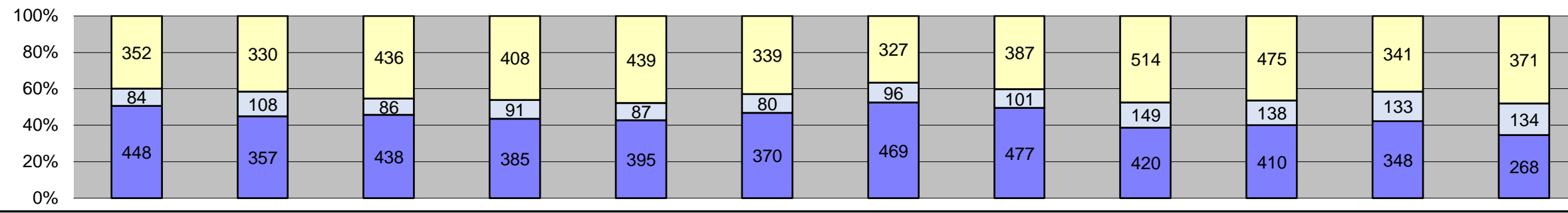
Los Angeles County MTA Blue Line
Approach Summary Report
All Locations
2019



Events	Jan-19	Feb-19	Mar-19	Apr-19	May-19	Jun-19	Jul-19	Aug-19	Sep-19	Oct-19	Nov-19	Dec-19	Year to Date Average	
													Quantity	%
Non-Violations	5,699	4,518	5,820	5,883	6,009	3,368	2,920	3,317	3,213	3,725	6,448	7,478	4,867	86%
Violations	809	766	902	933	834	767	835	771	768	640	920	736	807	14%
Total:	6,508	5,284	6,722	6,816	6,843	4,135	3,755	4,088	3,981	4,365	7,368	8,214	5,673	100%
Violations														
Uncontrollable Non-Issued	305	294	392	346	325	266	321	308	299	283	367	294	317	39%
Controllable Non-Issued	39	22	42	26	25	38	23	23	21	19	76	51	34	4%
Citations	465	450	468	562	484	463	491	440	448	338	477	391	456	57%
Total:	809	766	902	933	834	767	835	771	768	640	920	736	807	100%
Non-Violations														
Emergency Vehicle Non-Issuable	19	8	10	12	6	7	17	7	0	1	8	14	10	0%
Emergency Vehicle PD	4	1	0	3	0	0	0	3	2	0	0	0	3	0%
Intersection Control in Progress- PD	0	0	0	0	0	0	0	1	0	1	0	0	1	0%
Gate Down/ No Train	0	0	0	0	0	0	0	0	0	0	0	0	0	0%
No Violation Occurred	1,772	1,639	2,450	2,165	2,087	1,619	1,348	1,488	1,423	1,940	2,074	2,869	1,906	39%
Rear Axle Activation	1	0	2	0	3	6	1	0	0	0	4	0	3	0%
Right Turn- No Violation	0	0	0	0	0	0	0	0	0	0	0	0	0	0%
Test Shot	1,726	1,494	1,696	1,842	1,970	1,434	1,550	1,604	1,355	1,429	1,641	1,595	1,611	33%
Train Activation	2,176	1,375	1,660	1,857	1,941	301	3	214	433	353	2,721	3,000	1,336	27%
Amber Time Low	0	0	0	0	1	0	1	0	0	0	0	0	1	0%
Vehicle Stopped- PD	1	1	2	4	1	1	0	0	0	1	0	0	2	0%
Total:	5,699	4,518	5,820	5,883	6,009	3,368	2,920	3,317	3,213	3,725	6,448	7,478	4,873	100%
Uncontrollable Non-Issued Violations														
Administrative Dismissal	0	0	0	0	0	0	0	0	0	0	0	0	0	0%
Address/CDL/DOB Match Fail	0	0	26	83	6	1	3	0	0	0	0	0	24	7%
Car Obstructed	25	20	23	19	22	21	28	14	22	34	24	29	23	7%
Conditions Beyond Control	0	0	0	0	0	0	0	0	0	0	0	0	0	0%
Driver Identity Unclear	10	9	10	8	9	22	12	18	29	11	9	8	13	4%
Driver Obstructed	32	32	32	25	34	19	24	27	21	27	27	33	28	8%
Exposed	0	0	0	0	0	0	0	0	0	0	0	0	0	0%
Emergency Vehicle Issue	0	0	0	0	0	0	0	0	0	0	0	0	0	0%
Glare on Plate	23	11	13	14	22	9	17	19	24	21	22	22	18	5%
Glare on Windshield	16	20	28	16	21	38	25	14	29	23	47	15	24	7%
Illegible Plate	17	19	21	18	12	15	13	12	11	11	7	15	14	4%
Interest of Justice- PD	0	0	0	0	0	0	0	0	0	0	3	0	3	1%
Image Quality- PD	8	1	1	2	1	3	2	7	0	1	0	0	3	1%
Issuance Criteria Not Met- PD	0	0	0	7	0	0	0	0	0	0	0	0	7	2%
No Warning Sign	0	0	0	0	0	0	0	0	0	0	0	0	0	0%
No Plate	132	98	141	108	114	100	94	88	62	67	78	84	97	28%
No Speed Captured	0	0	0	0	0	0	0	0	0	0	0	0	0	0%
Obstruction In Photo- PD	16	4	5	10	3	8	12	12	5	7	1	5	7	2%
Out of State	13	11	9	17	11	14	13	20	13	8	11	11	13	4%
Plate Obstructed	12	7	14	15	14	10	5	13	16	7	36	8	13	4%
Short Yellow- PD	1	0	0	0	0	0	0	0	0	0	0	0	1	0%
Third Party Damage	0	0	0	0	0	0	0	0	0	0	0	0	0	0%
TSB Epired	0	0	0	0	0	0	4	0	0	0	0	0	4	1%
TSB No Hit	0	62	69	4	56	6	69	64	67	66	102	64	57	16%
Total:	305	294	392	346	325	266	321	308	299	283	367	294	350	100%
Controllable Non-Issued Violations														
Conduent Expire	0	0	0	0	0	0	0	0	0	0	0	0	0	0%
Clarity of Plate	0	0	0	0	0	0	0	0	0	0	0	0	0	0%
Clarity of Driver	0	0	0	0	0	0	0	0	0	0	0	0	0	0%
Dark Interior	0	1	5	1	2	1	0	0	1	1	12	7	3	9%
Data Box Related- PD	0	0	0	0	0	0	0	0	0	0	0	0	0	0%
Data Box Data Error- PD	0	0	0	0	0	0	0	0	0	0	0	0	0	0%
Data Entry Error	8	2	4	4	4	1	3	3	2	1	13	8	4	12%
Exposed	0	0	0	0	0	0	0	0	0	0	0	0	0	0%
Equipment Malfunction	4	6	16	5	4	19	10	10	10	7	19	14	10	28%
Framing- PD	0	1	0	0	0	0	0	0	0	0	0	0	1	3%
Framing of Car	24	11	15	13	11	9	7	7	7	5	19	18	12	34%
Framing of Driver	1	1	2	1	2	3	1	0	0	2	8	3	2	7%
Operator Error	0	0	0	0	0	0	0	0	0	0	0	0	0	0%
Framing of Plate	2	0	0	1	2	5	2	3	1	3	5	1	3	7%
Reject Expired	0	0	0	0	0	0	0	0	0	0	0	0	0	0%
Speed Not Determined	0	0	0	0	0	0	0	0	0	0	0	0	0	0%
Total:	39	22	42	25	25	38	23	23	21	19	76	51	36	100%
Summary Metrics														
Daily Average Vehicle Passes	0	0	0	0	0	0	0	0	0	0	0	0	0	0
Average Issued Speed	14	0	0	0	0	0	0	0	0	0	0	0	14	
Average Issued Red Seconds	35.5	11.1	13.3	11.3	10.9	10.2	11.3	9.8	10.8	9.5	46.7	14.7	16.2	
Citation / Violation Issuance Rate	57%	59%	52%	60%	58%	60%	59%	57%	58%	53%	52%	53%	57%	
Controllable Issuance Rate	92%	95%	92%	96%	95%	92%	96%	95%	96%	95%	86%	88%	93%	



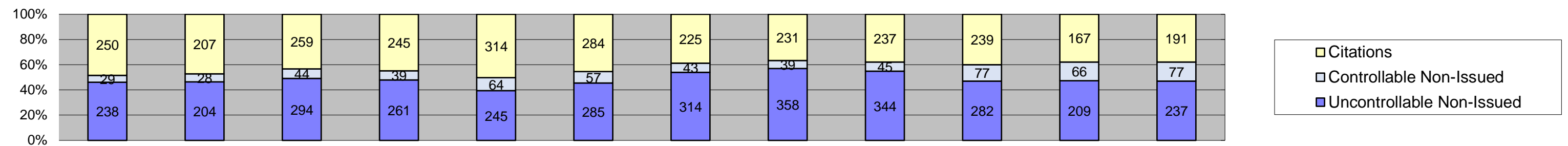
Los Angeles County MTA Expo Line
Approach Summary Report
All Locations
2019



Events	2019												Year to Date Monthly Average	
	Jan-19	Feb-19	Mar-19	Apr-19	May-19	Jun-19	Jul-19	Aug-19	Sep-19	Oct-19	Nov-19	Dec-19	Quantity	%
Non-Violations	13,534	13,233	13,912	14,057	13,431	12,455	12,657	12,096	10,979	11,891	10,878	9,994	12,426	93%
Violations	884	795	960	884	921	789	892	965	1,083	1,023	822	773	899	7%
Total:	14,418	14,028	14,872	14,941	14,352	13,244	13,549	13,061	12,062	12,914	11,700	10,767	13,326	100%
Violations														
Uncontrollable Non-Issued	448	357	438	385	395	370	469	477	420	410	348	268	399	44%
Controllable Non-Issued	84	108	86	91	87	80	96	101	149	138	133	134	107	12%
Citations	352	330	436	408	439	339	327	387	514	475	341	371	393	44%
Total:	884	795	960	884	921	789	892	965	1,083	1,023	822	773	899	56%
Non-Violations														
Emergency Vehicle Non-Issuable	28	16	8	7	11	7	13	10	13	7	7	10	11	0%
Emergency Vehicle PD	0	0	0	0	2	0	0	0	1	0	0	0	2	0%
Intersection Control in Progress-PD	0	0	1	2	0	1	1	0	0	1	0	0	1	0%
Gate Down/ No Train	0	0	0	0	0	0	0	0	0	0	0	0	0	0%
No Violation Occurred	7,795	6,632	7,413	7,367	7,048	6,358	6,553	6,034	5,388	5,994	5,272	4,662	6,376	51%
Rear Axle Activation	99	121	231	232	192	169	206	241	219	188	166	160	185	1%
Right Turn- No Violation	0	0	0	0	0	0	0	0	0	0	0	0	0	0%
Test Shot	2,308	3,448	2,956	3,048	2,551	2,612	2,763	2,552	2,249	2,360	2,202	2,093	2,595	21%
Train Activation	3,299	3,011	3,302	3,399	3,627	3,307	3,118	3,259	3,109	3,340	3,231	3,069	3,256	26%
Amber Time Low	4	0	0	0	0	0	1	0	0	0	0	0	3	0%
Vehicle Stopped- PD	1	5	1	2	0	1	2	0	0	1	0	0	2	0%
Total:	13,534	13,233	13,912	14,057	13,431	12,455	12,657	12,096	10,979	11,891	10,878	9,994	12,431	100%
Uncontrollable Non-Issued Violations														
Administrative Dismissal	0	0	0	0	0	0	0	0	0	0	0	0	0	0%
Address/CDL/DOB Match Fail	0	0	3	49	3	20	1	0	0	0	0	0	15	4%
Car Obstructed	3	7	3	6	11	10	9	11	12	7	9	4	8	2%
Conditions Beyond Control	0	1	0	0	0	0	0	0	0	0	0	0	1	0%
Driver Identity Unclear	0	11	12	3	3	5	1	6	10	7	3	1	6	1%
Driver Obstructed	49	38	43	44	43	33	43	47	37	43	40	34	41	10%
Exposed	0	0	0	0	0	0	0	0	0	0	0	0	0	0%
Emergency Vehicle Issue	6	0	0	0	2	10	8	7	0	3	4	2	5	5%
Glare on Plate	99	80	67	56	65	52	78	71	61	67	55	30	65	16%
Glare on Windshield	62	41	51	49	55	80	111	81	68	80	63	68	67	16%
Illegible Plate	1	0	1	1	1	1	1	1	7	3	6	5	3	1%
Interest of Justice- PD	0	0	0	0	0	1	0	0	1	0	0	0	1	0%
Image Quality- PD	6	6	3	10	1	0	2	3	5	0	0	0	5	1%
Issuance Criteria Not Met- PD	0	0	0	0	0	0	0	1	0	0	0	0	1	0%
No Warning Sign	0	0	0	0	0	0	0	0	0	0	0	0	0	0%
No Plate	152	96	146	122	121	101	126	137	106	110	88	63	114	27%
No Speed Captured	0	0	0	0	0	0	0	0	0	0	0	0	0	0%
Obstruction In Photo- PD	8	5	14	8	7	0	7	8	10	3	2	6	7	2%
Out of State	9	10	18	18	14	17	16	19	23	12	14	4	15	3%
Plate Obstructed	15	11	12	11	18	8	13	22	16	17	15	12	14	3%
Short Yellow- PD	0	0	0	0	0	0	1	0	0	0	0	0	1	0%
Third Party Damage	0	0	0	0	0	0	0	0	0	0	0	0	0	0%
TSB Epired	0	0	0	0	0	0	2	0	0	0	2	0	2	0%
TSB No Hit	38	51	65	8	51	32	50	63	64	58	47	39	47	11%
Total:	448	357	438	385	395	370	469	477	420	410	348	268	417	103%
Controllable Non-Issued Violations														
Conduent Expire	0	0	0	0	0	0	0	0	0	0	0	0	0	0%
Clarity of Plate	0	0	0	0	0	0	0	0	0	0	0	0	0	0%
Clarity of Driver	0	0	0	0	0	0	0	0	0	0	0	0	0	0%
Dark Interior	48	72	50	42	47	49	64	67	85	84	77	92	65	57%
Data Box Related- PD	0	0	0	0	0	0	0	0	0	0	0	0	0	0%
Data Box Data Error- PD	0	0	0	0	0	0	0	0	0	0	0	0	0	0%
Data Entry Error	6	6	6	6	4	0	5	8	15	12	10	2	7	6%
Exposed	0	0	0	0	0	0	0	0	0	0	0	0	0	0%
Equipment Malfunction	5	0	2	3	0	0	0	1	3	2	10	3	4	3%
Framing- PD	0	0	0	0	0	0	0	0	0	0	0	0	0	0%
Framing of Car	25	29	28	38	25	31	27	25	46	39	36	33	32	28%
Framing of Driver	0	0	0	0	0	0	0	0	0	0	0	2	2	2%
Operator Error	0	0	0	0	0	0	0	0	0	0	0	0	0	0%
Framing of Plate	0	1	0	2	11	0	0	0	0	1	0	2	3	3%
Reject Expired	0	0	0	0	0	0	0	0	0	0	0	0	0	0%
Speed Not Determined	0	0	0	0	0	0	0	0	0	0	0	0	0	0%
Total:	84	108	86	91	87	80	96	101	149	138	133	134	113	100%
Summary Metrics														
Daily Average Vehicle Passes	0	0	0	0	0	0	0	0	0	0	0	0	0	0
Average Issued Speed	0	0	0	0	0	0	0	0	0	0	0	0	0	0
Average Issued Red Seconds	651	435	505	629	317	380	408	1,364	279	449	838	327	548.5	
Citation / Violation Issuance Rate	40%	42%	45%	46%	48%	43%	37%	40%	0	0	0	0	44%	
Controllable Issuance Rate	81%	75%	84%	82%	83%	81%	77%	79%	78%	77%	72%	73%	79%	



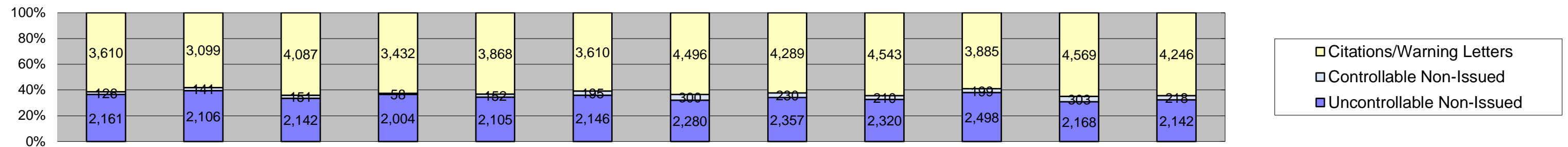
Los Angeles County MTA Gold Line
Approach Summary Report
All Locations
2019



Events	Jan-19	Feb-19	Mar-19	Apr-19	May-19	Jun-19	Jul-19	Aug-19	Sep-19	Oct-19	Nov-19	Dec-19	Year to Date Monthly Average	
													Quantity	%
Non-Violations	16,226	15,804	17,765	17,081	17,158	16,337	16,619	17,324	14,796	19,527	15,268	15,748	16,638	97%
Violations	517	439	597	545	623	626	582	628	626	598	442	505	561	3%
Total:	16,743	16,243	18,362	17,626	17,781	16,963	17,201	17,952	15,422	20,125	15,710	16,253	17,198	100%
Violations														
Uncontrollable Non-Issued	238	204	294	261	245	285	314	358	344	282	209	237	273	49%
Controllable Non-Issued	29	28	44	39	64	57	43	39	45	77	66	77	51	9%
Citations	250	207	259	245	314	284	225	231	237	239	167	191	237	42%
Total:	517	439	597	545	623	626	582	628	626	598	442	505	561	100%
Non-Violations														
Emergency Vehicle Non-Issuable	80	74	81	78	36	87	127	107	33	55	61	88	76	0%
Emergency Vehicle PD	3	7	4	0	1	1	2	4	2	3	4	1	3	0%
Intersection Control in Progress-PD	1	0	3	3	0	0	0	0	0	3	0	0	3	0%
Gate Down/ No Train	0	0	0	0	0	0	0	0	0	0	0	0	0	0%
No Violation Occurred	7,429	7,905	8,916	7,374	7,493	7,729	7,350	8,263	6,466	9,499	6,599	5,974	7,583	46%
Rear Axle Activation	24	32	26	21	4	0	7	5	22	45	12	4	18	0%
Right Turn- No Violation	0	0	0	0	0	0	0	0	0	0	0	0	0	0%
Test Shot	2,870	3,067	3,519	3,018	3,154	3,075	3,106	3,008	2,792	3,097	2,716	2,937	3,030	18%
Train Activation	5,817	4,714	5,215	6,585	6,469	5,445	6,026	5,937	5,481	6,824	5,876	6,744	5,928	36%
Amber Time Low	0	0	0	0	0	0	0	0	0	0	0	0	0	0%
Vehicle Stopped- PD	2	5	1	2	1	0	1	0	0	1	0	0	2	0%
Total:	16,226	15,804	17,765	17,081	17,158	16,337	16,619	17,324	14,796	19,527	15,268	15,748	16,642	100%
Uncontrollable Non-Issued Violations														
Administrative Dismissal	0	0	0	0	0	0	0	0	0	0	0	0	0	0%
Address/CDL/DOB Match Fail	0	0	12	29	7	0	0	0	0	0	0	0	16	5%
Car Obstructed	7	11	7	9	6	1	6	7	28	31	3	5	10	3%
Conditions Beyond Control	0	0	0	0	0	0	0	0	0	0	0	0	0	0%
Driver Identity Unclear	9	4	8	7	3	5	8	24	12	13	6	4	9	3%
Driver Obstructed	35	30	40	33	24	30	32	49	67	38	17	20	35	12%
Exposed	0	0	0	0	0	0	0	0	0	0	0	0	0	0%
Emergency Vehicle Issue	0	0	0	0	1	29	39	45	31	39	25	50	32	11%
Glare on Plate	12	13	19	19	18	20	18	18	4	5	18	8	14	5%
Glare on Windshield	13	19	31	13	10	32	32	21	6	3	9	8	16	5%
Illegible Plate	12	17	33	21	45	29	35	32	59	48	37	38	34	11%
Interest of Justice- PD	0	0	0	0	0	2	0	1	1	0	0	0	1	0%
Image Quality- PD	6	0	2	1	0	1	1	6	2	0	0	0	3	1%
Issuance Criteria Not Met- PD	0	0	0	0	1	0	1	0	0	0	0	0	1	0%
No Warning Sign	0	0	0	0	0	0	0	0	0	0	0	0	0	0%
No Plate	75	57	70	94	80	77	65	80	47	54	42	48	66	22%
No Speed Captured	0	0	0	0	0	0	0	0	0	0	0	0	0	0%
Obstruction In Photo- PD	9	6	7	10	5	4	12	7	4	4	5	8	7	2%
Out of State	7	5	8	8	6	5	7	9	22	4	5	5	8	3%
Plate Obstructed	10	3	11	10	7	0	7	11	8	3	12	10	8	3%
Short Yellow- PD	0	0	0	0	0	0	0	0	0	0	0	0	0	0%
Third Party Damage	0	0	0	0	0	0	0	0	0	0	0	0	0	0%
TSB Expired	0	1	0	0	0	0	1	1	0	0	0	1	1	0%
TSB No Hit	43	38	46	7	32	50	50	47	53	40	30	32	39	13%
Total:	238	204	294	261	245	285	314	358	344	282	209	237	300	100%
Controllable Non-Issued Violations														
Conduent Expire	0	0	0	0	0	0	0	0	0	0	0	0	0	0%
Clarity of Plate	0	0	0	0	0	0	0	0	0	0	0	0	0	0%
Clarity of Driver	0	0	0	0	0	0	0	0	0	0	2	0	2	3%
Dark Interior	10	8	16	6	25	21	14	10	11	12	21	28	15	26%
Data Box Related- PD	0	0	0	0	0	0	0	0	0	0	0	0	0	0%
Data Box Data Error- PD	0	0	0	0	0	0	0	0	0	0	1	0	1	2%
Data Entry Error	1	5	4	13	19	11	6	12	8	18	8	2	9	15%
Exposed	0	0	0	0	0	0	0	0	0	0	0	0	0	0%
Equipment Malfunction	4	5	3	1	6	19	13	5	13	32	20	34	13	22%
Framing- PD	0	0	0	0	0	0	0	0	0	0	0	0	0	0%
Framing of Car	9	8	16	16	6	2	3	6	2	0	2	0	7	12%
Framing of Driver	5	2	5	3	7	2	6	3	0	2	0	0	4	7%
Operator Error	0	0	0	0	0	0	0	0	0	0	0	0	0	0%
Framing of Plate	0	0	0	0	1	2	1	3	10	13	12	13	7	12%
Reject Expired	0	0	0	0	0	0	0	0	1	0	0	0	1	2%
Speed Not Determined	0	0	0	0	0	0	0	0	0	0	0	0	0	0%
Total:	29	28	44	39	64	57	43	39	45	77	66	77	59	100%
Summary Metrics														
Daily Average Vehicle Passes	0	0	0	0	0	0	0	0	0	0	0	0	0	0
Average Issued Speed	17	17	17	18	18	17	18	17	17	17	17	18	17	17
Average Issued Red Seconds	165.3	100.3	168.2	112.8	160.3	136.2	130.5	156.5	115.0	144.6	88.9	127.8	133.9	133.9
Citation / Violation Issuance Rate	48%	47%	43%	45%	50%	45%	39%	37%	38%	40%	38%	38%	42%	42%
Controllable Issuance Rate	90%	88%	85%	86%	83%	83%	84%	86%	84%	76%	72%	71%	82%	82%



Los Angeles County MTA Orange Line Approach Summary Report All Locations



Events	Jan-19	Feb-19	Mar-19	Apr-19	May-19	Jun-19	Jul-19	Aug-19	Sep-19	Oct-19	Nov-19	Dec-19	Year to Date Monthly Average	
													Quantity	%
Non-Violations	8,699	8,102	8,749	8,143	8,503	9,223	9,525	10,272	9,814	9,831	9,196	9,268	9,110	59%
Violations	5,897	5,346	6,380	5,445	6,125	5,951	7,076	6,876	7,073	6,582	7,040	6,606	6,366	41%
Total:	14,596	13,448	15,129	13,588	14,628	15,174	16,601	17,148	16,887	16,413	16,236	15,874	15,477	100%
Violations														
Uncontrollable Non-Issued	2,161	2,106	2,142	2,004	2,105	2,146	2,280	2,357	2,320	2,498	2,168	2,142	2,202	35%
Controllable Non-Issued	126	141	151	58	152	195	300	230	210	199	303	218	190	3%
Citations/Warning Letters	3,610	3,099	4,087	3,432	3,868	3,610	4,496	4,289	4,543	3,885	4,569	4,246	3,978	62%
Total:	5,897	5,346	6,380	5,494	6,125	5,951	7,076	6,876	7,073	6,582	7,040	6,606	6,371	100%
Non-Violations														
Emergency Vehicle Non-Issuable	165	152	202	159	108	149	139	181	191	198	65	62	148	2%
Emergency Vehicle PD	6	3	1	2	2	1	0	2	1	0	3	2	2	0%
Intersection Control in Progress-PD	0	0	0	9	0	0	0	0	3	1	0	0	4	0%
Gate Down/ No Train	0	0	0	0	0	0	0	0	0	0	0	0	0	0%
No Violation Occurred	5,169	4,788	4,865	4,478	4,879	5,562	5,805	6,444	6,309	6,218	5,789	5,574	5,490	59%
Rear Axle Activation	6	11	5	0	5	24	2	19	12	18	50	12	15	0%
Right Turn- No Violation	64	15	16	10	49	80	43	61	52	53	50	66	47	1%
Test Shot	3,279	3,011	3,643	3,465	3,457	3,405	3,532	3,390	3,242	3,336	3,239	3,546	3,379	37%
Train Activation	0	109	0	0	0	0	0	174	0	0	0	0	142	2%
Amber Time Low	0	0	0	0	1	0	0	1	1	0	0	1	1	0%
Vehicle Stopped- PD	10	13	17	20	2	2	4	0	3	7	0	5	8	0%
Total:	8,699	8,102	8,749	8,143	8,503	9,223	9,525	10,272	9,814	9,831	9,196	9,268	9,235	100%
Uncontrollable Non-Issued Violations														
Administrative Dismissal	0	0	0	0	0	0	0	0	0	0	0	0	0	0%
Address/CDL/DOB Match Fail	1	1	2	0	0	0	27	18	0	0	0	0	10	0%
Car Obstructed	55	61	61	40	52	41	72	87	94	66	72	83	65	3%
Conditions Beyond Control	0	0	0	0	0	0	0	0	0	0	0	0	0	0%
Driver Identity Unclear	14	18	12	35	11	21	58	52	33	39	26	29	29	1%
Driver Obstructed	88	121	79	82	75	154	128	179	154	87	136	185	122	5%
Exposed	0	0	0	1	0	0	0	0	0	1	0	0	1	0%
Emergency Vehicle Issue	7	8	2	14	6	3	17	8	5	7	3	1	7	0%
Glare on Plate	67	47	26	33	19	25	36	35	49	78	77	52	45	2%
Glare on Windshield	33	75	126	133	116	127	126	170	215	129	65	23	112	5%
Illegible Plate	5	3	6	3	5	3	6	9	3	16	29	19	9	0%
Interest of Justice- PD	0	1	0	0	0	4	0	5	2	0	12	1	4	0%
Image Quality- PD	3	2	2	5	1	9	3	7	6	3	1	1	4	0%
Issuance Criteria Not Met- PD	0	1	0	1	0	0	0	0	0	2	1	1	1	0%
No Warning Sign	0	0	0	0	0	0	0	0	0	0	0	0	0	0%
No Plate	997	945	946	911	910	861	898	906	915	942	857	795	907	41%
No Speed Captured	0	0	5	0	0	0	0	0	0	0	0	0	5	0%
Obstruction In Photo- PD	157	107	82	56	46	73	107	81	104	192	102	171	110	5%
Out of State	123	127	146	143	142	142	155	179	168	155	126	131	145	6%
Plate Obstructed	80	58	58	67	43	62	89	107	102	123	89	82	80	4%
Short Yellow- PD	1	0	0	0	1	0	0	0	0	0	1	1	1	0%
Third Party Damage	0	23	0	0	1	0	0	6	0	0	0	0	10	0%
TSB Expired	8	10	0	4	52	3	5	0	0	0	0	1	12	1%
TSB No Hit	522	498	589	476	625	618	513	508	470	658	571	566	551	25%
Total:	2,161	2,106	2,142	2,004	2,105	2,146	2,280	2,357	2,320	2,498	2,168	2,142	2,229	100%
Controllable Non-Issued Violations														
Conduent Expire	1	2	2	0	5	0	6	8	0	0	0	1	4	2%
Clarity of Plate	0	0	0	1	9	12	1	10	24	9	23	29	13	6%
Clarity of Driver	0	0	0	0	0	0	0	0	0	2	1	0	2	1%
Dark Interior	10	41	45	45	41	23	21	43	53	63	49	53	41	20%
Data Box Related- PD	0	0	0	0	0	0	0	1	0	0	0	0	1	0%
Data Box Data Error- PD	0	0	0	0	0	0	0	0	0	0	0	0	0	0%
Data Entry Error	6	1	5	3	4	9	7	13	9	12	7	5	7	3%
Exposed	0	0	0	0	0	9	16	3	8	4	21	18	11	5%
Equipment Malfunction	89	96	88	5	71	120	236	130	101	100	197	111	112	54%
Framing- PD	0	0	0	0	0	0	0	0	0	0	0	0	0	0%
Framing of Car	19	1	4	1	11	19	6	6	2	1	0	1	6	3%
Framing of Driver	0	0	0	1	1	2	1	4	13	1	0	0	3	2%
Operator Error	0	0	0	0	0	0	0	0	0	0	0	0	0	0%
Framing of Plate	1	0	6	1	9	1	6	12	0	7	3	0	5	2%
Reject Expired	0	0	0	0	0	0	0	0	0	0	0	0	0	0%
Speed Not Determined	0	0	1	1	1	0	0	0	0	0	2	0	1	1%
Total:	126	141	151	58	152	195	300	230	210	199	303	218	206	100%
Summary Metrics														
Daily Average Vehicle Passes	0	0	0	0	0	0	0	0	0	0	0	0	0	
Average Issued Speed	21	22	23	22	23	23	23	23	23	23	23	22	22	
Average Issued Red Seconds	10.3	9.0	10.7	10.2	9.0	9.8	9.5	10.3	9.0	10.1	10.5	10.5	9.9	
Citation / Violation Issuance Rate	61%	58%	64%	62%	63%	61%	64%	62%	64%	59%	65%	64%	62%	
Controllable Issuance Rate	97%	96%	96%	98%	96%	95%	94%	95%	96%	95%	94%	95%	96%	