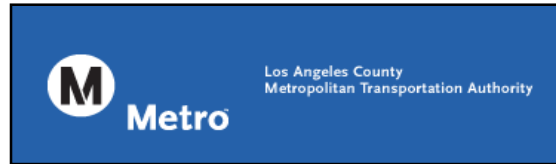




Orange Line Monthly Report

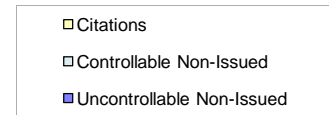
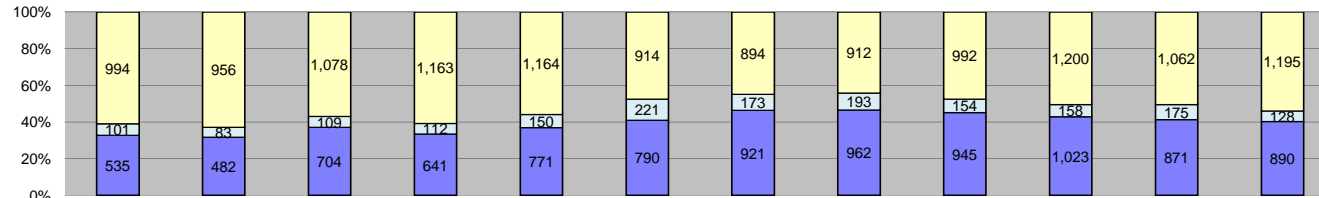


December 2011

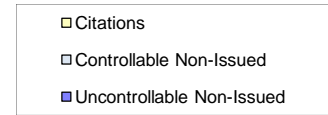
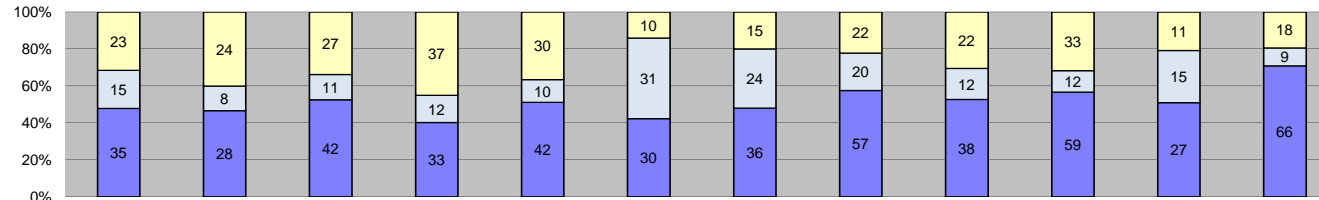


Table of Contents

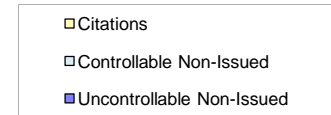
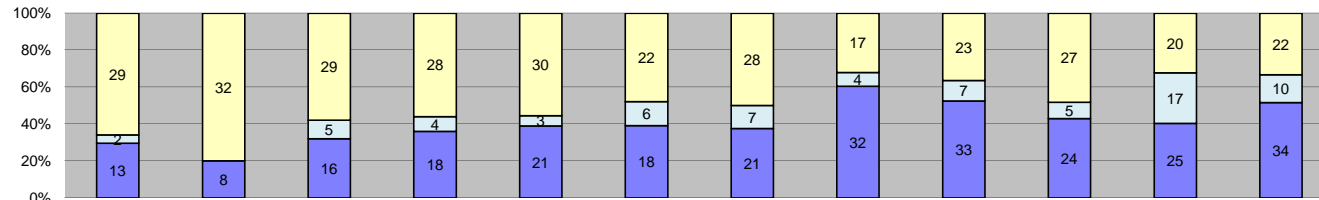
Los Angeles County MTA Orange Line	Page
<i>Approach Summary Report, All Locations.....</i>	2
<i>Approach Summary Report, Location 1301: NB Tujunga Ave @ Busway.....</i>	3
<i>Approach Summary Report, Location 1302: SB Tujunga Ave @ Busway.....</i>	4
<i>Approach Summary Report, Location 1313: EB Oxnard St. @ Buffalo Ave.....</i>	5
<i>Approach Summary Report, Location 1314: WB Oxnard St. @ Buffalo Ave.....</i>	6
<i>Approach Summary Report, Location 1321: NB Woodman Ave @ Busway.....</i>	7
<i>Approach Summary Report, Location 1322: SB Woodman Ave @ Busway.....</i>	8
<i>Approach Summary Report, Location 1331: NB Kester Ave @ Busway.....</i>	9
<i>Approach Summary Report, Location 1332: SB Kester Ave @ Busway.....</i>	10
<i>Approach Summary Report, Location 1341: NB Sepulveda Blvd @ Busway.....</i>	11
<i>Approach Summary Report, Location 1342: SB Sepulveda Blvd @ Busway.....</i>	12
<i>Approach Summary Report, Location 1351: NB Woodley @ Busway.....</i>	13
<i>Approach Summary Report, Location 1352: SB Woodley @ Busway.....</i>	14
<i>Approach Summary Report, Location 1361: NB Balboa Blvd @ Busway.....</i>	15
<i>Approach Summary Report, Location 1362: SB Balboa Blvd @ Busway.....</i>	16
<i>Approach Summary Report, Location 1371: NB White Oak Ave @ Busway.....</i>	17
<i>Approach Summary Report, Location 1372: SB White Oak Ave @ Busway.....</i>	18
<i>Approach Summary Report, Location 1382: SB Lindley Ave @ Busway.....</i>	19
<i>Approach Summary Report, Location 1385: WB to NB Lindley Ave @ Busway.....</i>	20
<i>Approach Summary Report, Location 1391: NB Reseda Blvd @ Busway.....</i>	21
<i>Approach Summary Report, Location 1392: SB Reseda Blvd @ Busway.....</i>	22
<i>Approach Summary Report, Location 1402: SB Mason Ave. @ Busway.....</i>	23
<i>Approach Summary Report, Location 1405: WB to NB Mason Ave. @ Busway.....</i>	24
<i>Approach Summary Report, Location 1412: SB De Soto Ave @ Busway.....</i>	25
<i>Approach Summary Report, Location 1415: WB to NB De Soto Ave. @ Busway.....</i>	26
<i>Customer Service Report.....</i>	27
<i>Monthly Citation Yield Report.....</i>	28
<i>Disposition Summary Report.....</i>	29
<i>Performance Report.....</i>	30



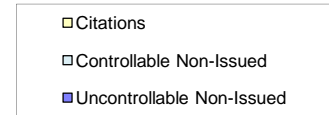
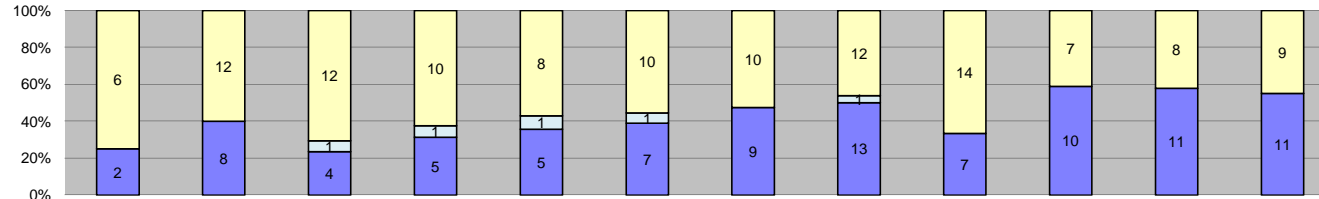
Events	Jan-11	Feb-11	Mar-11	Apr-11	May-11	Jun-11	Jul-11	Aug-11	Sep-11	Oct-11	Nov-11	Dec-11	Year to Date Average		2010 Average	
	Quantity	Quantity	Quantity	Quantity	Quantity	Quantity	Quantity	Quantity	Quantity	Quantity	Quantity	Quantity	Quantity	%	%	%
Non-Violations	5,317	5,368	6,062	5,756	5,867	5,825	4,884	3,864	3,827	4,144	3,780	3,657	4,863	71%	3,963	70%
Violations	1,630	1,521	1,891	1,916	2,085	1,925	1,988	2,067	2,091	2,381	2,108	2,213	1,985	29%	1,690	30%
Total:	6,947	6,889	7,953	7,672	7,952	7,750	6,872	5,931	5,918	6,525	5,888	5,870	6,847	100%	5,653	100%
Violations																
Uncontrollable Non-Issued	535	482	704	641	771	790	921	962	945	1,023	871	890	795	40%	635	38%
Controllable Non-Issued	101	83	109	112	150	221	173	193	154	158	175	128	146	7%	164	10%
Citations	994	956	1,078	1,163	1,164	914	894	912	992	1,200	1,062	1,195	1,044	53%	892	53%
Total:	1,630	1,521	1,891	1,916	2,085	1,925	1,988	2,067	2,091	2,381	2,108	2,213	1,985	100%	1,690	100%
Non-Violations																
Rear Axle Violation	14	13	14	7	10	4	15	15	9	8	15	34	13	0%	19	0%
Emergency Vehicle	110	86	123	105	118	125	115	110	88	80	90	109	105	2%	79	2%
Right Turn	17	11	19	13	14	34	25	29	32	42	15	26	23	0%	20	1%
No Violation Occurred	5,176	5,258	5,906	5,631	5,725	5,662	4,729	3,710	3,698	4,014	3,660	3,488	4,721	97%	3,924	97%
Total:	5,317	5,368	6,062	5,756	5,867	5,825	4,884	3,864	3,827	4,144	3,780	3,657	4,863	100%	4,042	100%
Uncontrollable Non-Issued Violations																
No Plate	156	155	199	177	188	177	205	202	244	234	210	220	197	25%	0	0%
Out of State Plate	37	28	39	26	36	31	32	32	29	39	46	29	34	4%	159	32%
Glare on Plate	7	11	10	7	3	7	4	14	9	17	7	7	9	1%	24	5%
Illegible Plate	1	10	12	2	8	8	10	7	5	10	8	15	8	1%	3	1%
Plate Obstructed	7	9	11	5	9	11	10	13	15	14	15	8	11	1%	6	1%
Windshield Glare	40	67	117	140	177	195	184	169	124	113	99	61	124	15%	8	2%
Driver Obstructed	57	60	67	26	33	43	44	39	37	46	37	30	43	5%	100	20%
Car Obstructed	24	26	34	23	39	29	24	20	24	30	36	19	27	3%	26	5%
No DMV Match Found	134	100	118	105	125	97	137	130	139	171	173	106	128	16%	21	4%
LASD Expired	1	0	0	0	0	0	0	0	2	4	1	2	1	0%	98	20%
LASD Return	61	87	88	121	144	179	255	323	297	329	239	354	206	141%	8	2%
Other	10	4	9	9	9	13	16	13	20	16	0	39	13	2%	41	8%
Total:	535	557	704	641	771	790	921	962	945	1,023	871	890	801	100%	493	100%
Controllable Non-Issued Violations																
Framing of Plate	1	4	3	6	2	5	3	6	4	17	7	9	6	4%	4	3%
Focus / Clarity of Plate	5	3	3	3	1	4	1	5	2	4	4	6	3	2%	4	3%
Dark Interior	64	58	80	86	101	136	115	141	110	95	96	64	96	65%	51	41%
Framing of Driver	0	0	2	2	2	0	1	2	4	8	12	12	4	3%	1	1%
Focus / Clarity of Driver	8	8	1	6	6	6	8	7	5	4	19	6	7	5%	6	5%
Framing of Car	5	4	3	4	7	14	21	19	21	17	21	15	13	9%	6	5%
Data Error	14	1	4	2	0	2	0	0	0	0	0	0	2	1%	2	1%
Exposure	2	8	4	3	0	1	1	0	0	1	3	2	2	1%	16	13%
Equipment Malfunction	1	0	7	0	29	52	23	12	7	11	11	14	14	9%	33	27%
ACS Expired	1	0	2	0	2	1	0	1	1	1	2	0	1	1%	1	0%
Total:	101	86	109	112	150	221	173	193	154	158	175	128	147	100%	123	100%
Summary Metrics																
Daily Average Vehicle Passes	215,115	229,482	263,532	221,277	240,519	218,975	189,731	188,287	188,321	181,427	232,417	169,481	Year to Date Average		2010 Average	
Average Issued Speed	25	25	25	26	25	25	25	25	25	25	25	25	211,547		205,587	
Average Issued Red	10.1	8.0	8.9	9.0	9.0	10.0	10.5	9.6	8.1	9.0	9.0	9.7	25		25	
Citation / Violation Issuance	61%	63%	57%	61%	56%	47%	45%	44%	47%	50%	50%	54%	9.2		9.8	
Controllable Issuance Rate	91%	92%	91%	91%	89%	81%	84%	83%	87%	88%	86%	90%	53%		53%	
													88%		85%	



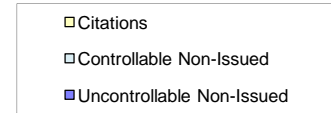
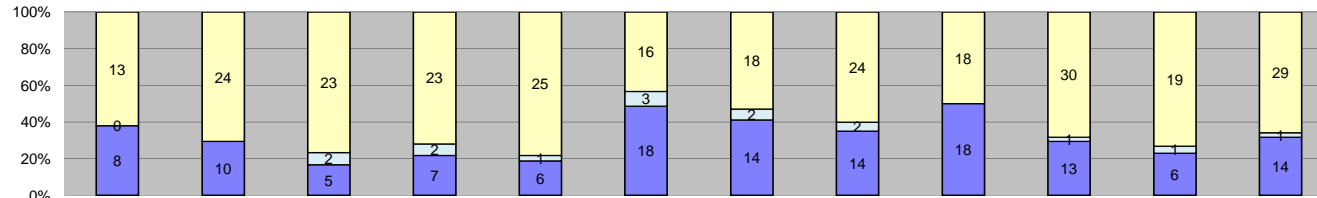
Events	Jan-11	Feb-11	Mar-11	Apr-11	May-11	Jun-11	Jul-11	Aug-11	Sep-11	Oct-11	Nov-11	Dec-11	Year to Date Average		2010 Average	
													Quantity	%	Quantity	%
Non-Violations	43	51	60	49	58	59	57	60	49	49	32	67	53	40%	7	6%
Violations	73	60	80	82	82	71	75	99	72	104	53	93	79	60%	95	94%
Total:	116	111	140	131	140	130	132	159	121	153	85	160	132	100%	102	100%
Violations																
Uncontrollable Non-Issued	35	28	42	33	42	30	36	57	38	59	27	66	41	52%	58	61%
Controllable Non-Issued	15	8	11	12	10	31	24	20	12	12	15	9	15	19%	10	11%
Citations	23	24	27	37	30	10	15	22	22	33	11	18	23	29%	27	29%
Total:	73	60	80	82	82	71	75	99	72	104	53	93	79	100%	95	100%
Non-Violations																
Rear Axle Violation	0	0	0	0	0	0	0	0	0	0	0	0	0	0%	0	0%
Emergency Vehicle	38	46	47	43	48	48	52	51	38	40	28	52	44	84%	35	84%
Right Turn	0	0	0	0	0	0	0	0	0	1	0	1	0	0%	0	0%
No Violation Occurred	5	5	13	6	10	11	5	9	11	8	4	14	8	16%	7	16%
Total:	43	51	60	49	58	59	57	60	49	49	32	67	53	100%	42	100%
Uncontrollable Non-Issued Violations																
No Plate	11	5	11	7	12	6	7	11	11	12	6	13	9	23%	7	27%
Out of State Plate	0	0	2	0	1	2	1	3	1	1	1	4	1	3%	1	4%
Glare on Plate	0	0	0	0	0	0	0	0	0	0	0	0	0	0%	0	0%
Illegible Plate	0	1	2	1	1	0	0	0	0	1	0	0	1	1%	0	0%
Plate Obstructed	0	0	0	0	1	0	0	0	0	1	0	0	0	0%	0	0%
Windshield Glare	11	3	12	9	12	15	14	19	13	16	5	12	12	29%	10	39%
Driver Obstructed	4	6	6	0	2	0	1	1	4	4	0	5	3	7%	2	7%
Car Obstructed	1	0	1	0	1	0	0	1	0	0	2	0	1	1%	0	1%
No DMV Match Found	2	6	2	5	5	2	2	2	2	5	5	4	4	9%	3	11%
LASD Expired	0	0	0	0	0	0	0	0	0	0	0	0	0	0%	0	0%
LASD Return	6	7	6	10	7	5	11	20	7	18	8	25	11	73%	3	36%
Other	0	0	0	1	0	0	0	0	0	1	0	3	0	1%	0	0%
Total:	35	28	42	33	42	30	36	57	38	59	27	66	41	100%	25	100%
Controllable Non-Issued Violations																
Framing of Plate	0	0	0	0	0	0	0	0	0	0	0	0	0	0%	0	0%
Focus / Clarity of Plate	1	0	0	0	0	0	0	0	0	0	0	0	0	1%	0	0%
Dark Interior	13	8	11	10	9	24	20	19	9	11	12	9	13	87%	6	84%
Framing of Driver	0	0	0	0	0	0	1	0	1	0	0	0	0	1%	0	4%
Focus / Clarity of Driver	1	0	0	1	1	0	0	0	0	0	1	0	0	2%	0	2%
Framing of Car	0	0	0	1	0	1	0	1	0	1	0	0	0	2%	0	1%
Data Error	0	0	0	0	0	0	0	0	0	0	0	0	0	0%	0	0%
Exposure	0	0	0	0	0	0	0	0	0	0	0	0	0	0%	0	1%
Equipment Malfunction	0	0	0	0	0	6	3	0	2	0	2	0	1	7%	1	7%
ACS Expired	0	0	0	0	0	0	0	0	0	0	0	0	0	0%	0	0%
Total:	15	8	11	12	10	31	24	20	12	12	15	9	15	100%	7	100%
Summary Metrics																
Daily Average Vehicle Passes	4,341	4,527	4,636	4,154	4,720	4,701	3,773	3,296	2,776	3,173	4,486	2,606	Year to Date Average		2010 Average	
Average Issued Speed	20	19	19	20	19	20	21	19	21	20	20	19	3,932		4,277	
Average Issued Red	11.8	7.6	9.2	7.4	11.3	4.2	7.9	9.1	5.3	7.6	10.9	7.9	8		9.4	
Citation / Violation Issuance	32%	40%	34%	45%	37%	14%	20%	22%	31%	32%	21%	19%	29%		29%	
Controllable Issuance Rate	61%	75%	71%	76%	75%	24%	38%	52%	65%	73%	42%	67%	60%		39%	



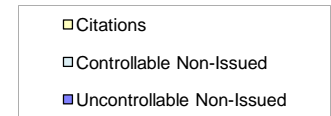
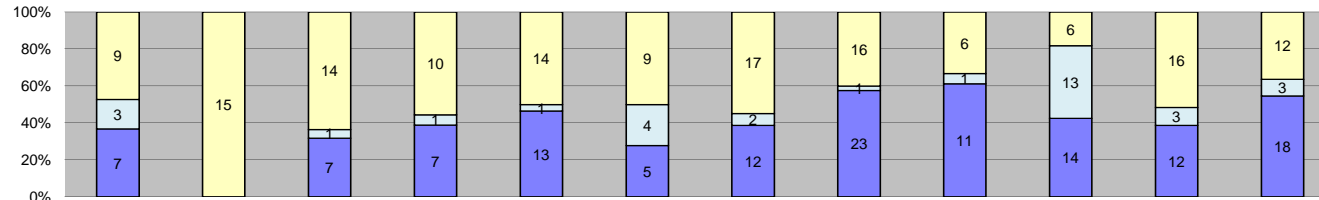
Events	Jan-11	Feb-11	Mar-11	Apr-11	May-11	Jun-11	Jul-11	Aug-11	Sep-11	Oct-11	Nov-11	Dec-11	Year to Date Average		2010 Average	
													Quantity	%	Quantity	%
Non-Violations	88	74	83	96	91	95	105	114	121	107	106	157	103	66%	101	70%
Violations	44	40	50	50	54	46	56	53	63	56	62	66	53	34%	43	30%
Total:	132	114	133	146	145	141	161	167	184	163	168	223	156	100%	144	100%
Violations																
Uncontrollable Non-Issued	13	8	16	18	21	18	21	32	33	24	25	34	22	41%	15	35%
Controllable Non-Issued	2	0	5	4	3	6	7	4	7	5	17	10	6	11%	2	5%
Citations	29	32	29	28	30	22	28	17	23	27	20	22	26	48%	26	61%
Total:	44	40	50	50	54	46	56	53	63	56	62	66	53	100%	43	100%
Non-Violations																
Rear Axle Violation	0	3	0	0	0	0	0	1	0	1	0	1	1	0%	0	0%
Emergency Vehicle	2	0	0	3	0	4	3	2	2	0	2	4	2	2%	1	1%
Right Turn	0	0	0	0	0	0	0	0	0	0	0	0	0	0%	0	0%
No Violation Occurred	86	71	83	93	91	91	102	111	119	106	104	152	101	98%	101	98%
Total:	88	74	83	96	91	95	105	114	121	107	106	157	103	100%	103	100%
Uncontrollable Non-Issued Violations																
No Plate	4	4	6	2	6	5	7	4	8	5	7	8	6	25%	5	33%
Out of State Plate	1	0	1	0	0	0	0	0	2	1	0	0	0	2%	1	5%
Glare on Plate	0	0	0	0	0	0	0	0	0	0	0	0	0	0%	0	0%
Illegible Plate	0	0	0	0	0	0	0	0	0	0	0	0	0	0%	0	1%
Plate Obstructed	0	0	0	2	0	0	0	2	0	1	1	0	1	2%	0	2%
Windshield Glare	1	1	4	9	2	6	3	14	7	6	6	4	5	24%	4	24%
Driver Obstructed	0	1	0	0	1	0	0	0	0	0	0	0	0	1%	0	1%
Car Obstructed	1	1	0	1	0	1	0	0	2	2	2	1	1	4%	1	5%
No DMV Match Found	4	1	3	1	3	1	1	3	3	5	2	3	3	11%	3	19%
LASD Expired	0	0	0	0	0	0	0	0	0	0	0	0	0	0%	1	3%
LASD Return	2	0	2	3	9	5	10	9	11	4	7	17	7	113%	1	130%
Other	0	0	0	0	0	0	0	0	0	0	0	1	0	0%	0	0%
Total:	13	8	16	18	21	18	21	32	33	24	25	34	22	100%	15	100%
Controllable Non-Issued Violations																
Framing of Plate	0	0	0	0	0	0	0	0	0	0	0	0	0	0%	0	0%
Focus / Clarity of Plate	0	0	0	0	0	0	0	0	0	0	0	0	0	0%	0	0%
Dark Interior	2	0	5	4	3	5	6	4	7	4	9	3	4	74%	1	80%
Framing of Driver	0	0	0	0	0	0	0	0	0	0	0	0	0	0%	0	0%
Focus / Clarity of Driver	0	0	0	0	0	1	0	0	0	0	0	0	0	1%	0	20%
Framing of Car	0	0	0	0	0	0	1	0	0	0	0	1	0	3%	0	0%
Data Error	0	0	0	0	0	0	0	0	0	0	0	0	0	0%	0	0%
Exposure	0	0	0	0	0	0	0	0	0	1	0	0	0	1%	0	0%
Equipment Malfunction	0	0	0	0	0	0	0	0	0	0	8	6	1	20%	0	0%
ACS Expired	0	0	0	0	0	0	0	0	0	0	0	0	0	0%	0	0%
Total:	2	0	5	4	3	6	7	4	7	5	17	10	6	100%	1	100%
Summary Metrics																
Daily Average Vehicle Passes	10,009	10,444	10,995	9,110	10,618	10,104	8,377	7,342	7,690	6,522	4,393	2,578	Year to Date Average		2010 Average	
Average Issued Speed	31	31	30	32	30	31	33	31	32	27	36	29	8,182		10,251	
Average Issued Red	7.1	5.0	5.0	4.8	4.8	4.3	5.8	2.1	3.0	6.2	6.3	4.0	5		5.6	
Citation / Violation Issuance	66%	80%	58%	56%	56%	48%	50%	32%	37%	48%	32%	33%	50%		61%	
Controllable Issuance Rate	94%	100%	85%	88%	91%	79%	80%	81%	77%	84%	54%	69%	82%		93%	



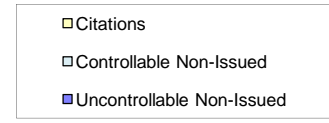
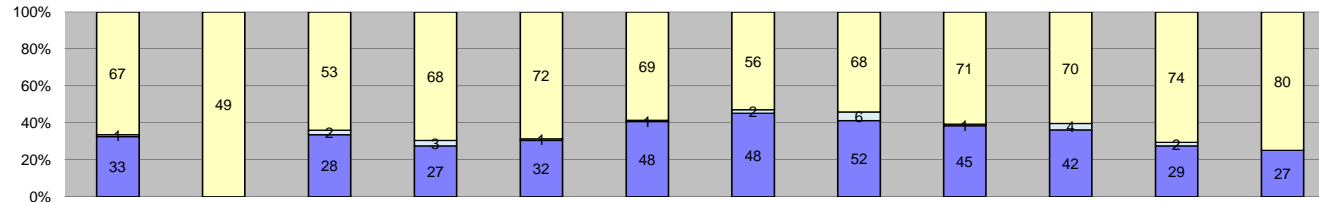
Events	Jan-11	Feb-11	Mar-11	Apr-11	May-11	Jun-11	Jul-11	Aug-11	Sep-11	Oct-11	Nov-11	Dec-11	Year to Date Average		2010 Average	
	Quantity	Quantity	Quantity	Quantity	Quantity	Quantity	Quantity	Quantity	Quantity	Quantity	Quantity	Quantity	Quantity	%	%	%
Non-Violations	10	4	8	3	5	2	0	11	9	6	8	4	6	25%	2	7%
Violations	8	20	17	16	14	18	19	26	21	17	19	20	18	75%	20	93%
Total:	18	24	25	19	19	20	19	37	30	23	27	24	24	100%	22	100%
Violations																
Uncontrollable Non-Issued	2	8	4	5	5	7	9	13	7	10	11	11	8	43%	10	49%
Controllable Non-Issued	0	0	1	1	1	1	0	1	0	0	0	0	0	2%	0	0%
Citations	6	12	12	10	8	10	10	12	14	7	8	9	10	55%	10	51%
Total:	8	20	17	16	14	18	19	26	21	17	19	20	18	100%	20	100%
Non-Violations																
Rear Axle Violation	0	0	0	0	0	0	0	0	0	0	0	0	0	0%	0	0%
Emergency Vehicle	4	2	5	1	4	1	0	7	4	1	3	4	3	51%	5	77%
Right Turn	0	0	0	0	0	0	0	0	0	0	0	0	0	0%	0	0%
No Violation Occurred	6	2	3	2	1	1	0	4	5	5	5	0	3	49%	2	23%
Total:	10	4	8	3	5	2	0	11	9	6	8	4	6	100%	6	100%
Uncontrollable Non-Issued Violations																
No Plate	1	5	1	3	1	5	6	8	4	3	4	6	4	51%	3	52%
Out of State Plate	0	1	1	0	2	0	1	1	1	1	1	1	1	11%	0	7%
Glare on Plate	0	0	0	0	0	0	0	0	0	0	0	0	0	0%	0	0%
Illegible Plate	0	0	0	0	0	0	0	0	0	0	0	0	0	0%	0	2%
Plate Obstructed	0	0	0	0	0	0	0	1	0	0	0	1	0	2%	0	0%
Windshield Glare	0	0	0	0	0	0	1	0	0	0	0	0	0	1%	0	3%
Driver Obstructed	0	0	0	0	0	0	0	1	0	0	0	0	0	1%	0	0%
Car Obstructed	0	1	0	0	0	0	0	0	0	0	0	0	0	1%	0	0%
No DMV Match Found	1	1	1	2	0	1	1	1	1	2	6	1	2	20%	2	35%
LASD Expired	0	0	0	0	0	0	0	0	0	0	0	0	0	0%	0	2%
LASD Return	0	0	1	0	2	1	0	1	1	4	0	1	1	220%	0	0%
Other	0	0	0	0	0	0	0	0	0	0	0	1	0	1%	0	0%
Total:	2	8	4	5	5	7	9	13	7	10	11	11	8	100%	5	100%
Controllable Non-Issued Violations																
Framing of Plate	0	0	0	0	0	0	0	0	0	0	0	0	0	0%	0	0%
Focus / Clarity of Plate	0	0	0	0	0	0	0	0	0	0	0	0	0	0%	0	0%
Dark Interior	0	0	0	1	1	1	0	1	0	0	0	0	0	80%	0	100%
Framing of Driver	0	0	0	0	0	0	0	0	0	0	0	0	0	0%	0	0%
Focus / Clarity of Driver	0	0	0	0	0	0	0	0	0	0	0	0	0	0%	0	0%
Framing of Car	0	0	0	0	0	0	0	0	0	0	0	0	0	0%	0	0%
Data Error	0	0	0	0	0	0	0	0	0	0	0	0	0	0%	0	0%
Exposure	0	0	1	0	0	0	0	0	0	0	0	0	0	20%	0	0%
Equipment Malfunction	0	0	0	0	0	0	0	0	0	0	0	0	0	0%	0	0%
ACS Expired	0	0	0	0	0	0	0	0	0	0	0	0	0	0%	0	0%
Total:	0	0	1	1	1	1	0	1	0	0	0	0	0	100%	0	100%
Summary Metrics																
Daily Average Vehicle Passes	4,251	4,367	4,430	4,070	4,556	4,699	3,713	3,267	3,125	3,341	9,540	5,976	Year to Date Average		2010 Average	
Average Issued Speed	22	20	22	23	19	22	21	19	20	21	21	20	4,611		4,148	
Average Issued Red	2.1	11.5	12.7	6.9	18.3	5.7	6.6	9.8	6.9	7.6	5.2	11.5	21		20	
Citation / Violation Issuance	75%	60%	71%	63%	57%	56%	53%	46%	67%	41%	42%	45%	9		11.9	
Controllable Issuance Rate	100%	100%	92%	91%	89%	91%	100%	92%	100%	100%	100%	100%	56%		51%	
													96%		68%	



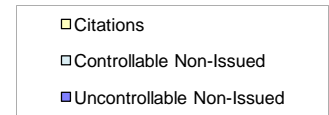
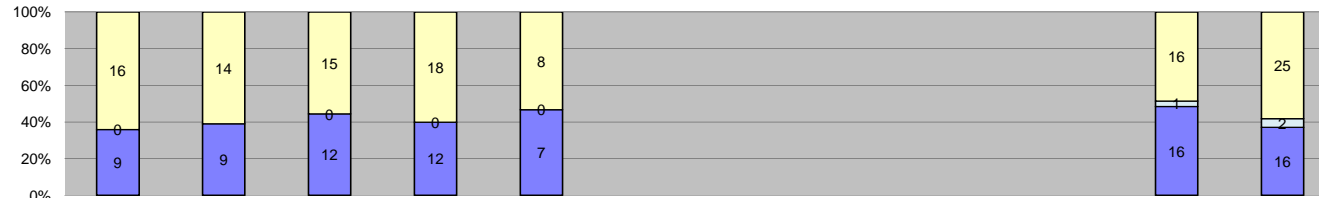
Events	Jan-11	Feb-11	Mar-11	Apr-11	May-11	Jun-11	Jul-11	Aug-11	Sep-11	Oct-11	Nov-11	Dec-11	Year to Date Average		2010 Average	
													Quantity	%	Quantity	%
Non-Violations	32	26	36	25	26	49	45	37	44	62	40	42	39	53%	33	47%
Violations	21	34	30	32	32	37	34	40	36	44	26	44	34	47%	37	53%
Total:	53	60	66	57	58	86	79	77	80	106	66	86	73	100%	71	100%
Violations																
Uncontrollable Non-Issued	8	10	5	7	6	18	14	14	18	13	6	14	11	32%	12	33%
Controllable Non-Issued	0	0	2	2	1	3	2	2	0	1	1	1	1	4%	1	3%
Citations	13	24	23	23	25	16	18	24	18	30	19	29	22	64%	24	64%
Total:	21	34	30	32	32	37	34	40	36	44	26	44	34	100%	37	100%
Non-Violations																
Rear Axle Violation	1	2	2	0	0	0	3	0	0	1	1	2	1	3%	2	6%
Emergency Vehicle	2	2	5	2	6	5	4	3	4	3	0	6	4	9%	2	6%
Right Turn	17	11	18	13	13	33	25	28	31	40	14	22	22	57%	18	49%
No Violation Occurred	12	11	11	10	7	11	13	6	9	18	25	12	12	31%	14	38%
Total:	32	26	36	25	26	49	45	37	44	62	40	42	39	100%	36	100%
Uncontrollable Non-Issued Violations																
No Plate	4	7	1	4	1	3	2	4	8	4	3	2	4	32%	4	38%
Out of State Plate	0	0	0	0	0	0	1	0	1	1	1	1	0	4%	1	6%
Glare on Plate	0	0	0	0	0	0	0	0	0	0	0	0	0	0%	0	1%
Illegible Plate	0	0	0	0	0	0	0	0	0	0	0	0	0	0%	0	1%
Plate Obstructed	0	0	0	0	1	0	0	0	0	0	0	1	0	2%	0	2%
Windshield Glare	0	0	0	0	1	7	3	4	1	1	0	0	1	13%	1	9%
Driver Obstructed	0	0	0	1	0	0	0	0	0	1	0	0	0	2%	0	2%
Car Obstructed	0	0	0	0	0	1	0	0	0	0	0	0	0	1%	0	0%
No DMV Match Found	1	2	1	1	2	1	5	2	1	4	1	3	2	18%	4	35%
LASD Expired	0	0	0	0	0	0	0	0	0	0	0	0	0	0%	0	4%
LASD Return	1	1	3	1	1	6	3	4	7	2	1	5	3	219%	0	15%
Other	2	0	0	0	0	0	0	0	0	0	0	2	0	3%	0	0%
Total:	8	10	5	7	6	18	14	14	18	13	6	14	11	100%	10	100%
Controllable Non-Issued Violations																
Framing of Plate	0	0	0	0	0	0	0	0	0	0	0	0	0	0%	0	0%
Focus / Clarity of Plate	0	0	0	0	0	0	0	0	0	0	0	0	0	0%	0	0%
Dark Interior	0	0	1	2	1	3	2	1	0	1	1	0	1	75%	1	77%
Framing of Driver	0	0	0	0	0	0	0	0	0	0	0	1	0	6%	0	0%
Focus / Clarity of Driver	0	0	0	0	0	0	0	0	0	0	0	0	0	0%	0	8%
Framing of Car	0	0	0	0	0	0	0	0	0	0	0	0	0	0%	0	8%
Data Error	0	0	0	0	0	0	0	0	0	0	0	0	0	0%	0	0%
Exposure	0	1	1	0	0	0	0	0	0	0	0	0	0	13%	0	8%
Equipment Malfunction	0	0	0	0	0	0	0	0	0	0	0	0	0	0%	0	0%
ACS Expired	0	0	0	0	0	0	0	1	0	0	0	0	0	6%	0	0%
Total:	0	0	2	2	1	3	2	2	0	1	1	1	1	100%	1	100%
Summary Metrics																
Daily Average Vehicle Passes	8,652	9,914	10,823	8,907	9,585	9,131	7,487	7,077	6,895	6,318	10,343	6,162	Year to Date Average		2010 Average	
Average Issued Speed	22	22	24	29	26	26	22	24	26	22	24	24	8,441		9,829	
Average Issued Red	12.5	11.7	8.2	3.9	6.5	16.0	15.0	8.1	7.5	14.8	11.3	8.1	10		11.5	
Citation / Violation Issuance	62%	71%	77%	72%	78%	43%	53%	60%	50%	68%	73%	66%	64%		64%	
Controllable Issuance Rate	100%	100%	92%	92%	96%	84%	90%	92%	100%	97%	95%	97%	95%		88%	



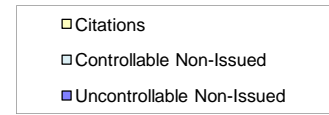
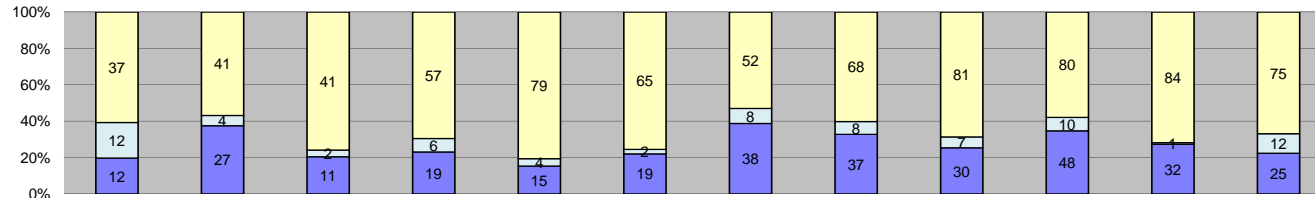
Events	Jan-11	Feb-11	Mar-11	Apr-11	May-11	Jun-11	Jul-11	Aug-11	Sep-11	Oct-11	Nov-11	Dec-11	Year to Date Average		2010 Average	
													Quantity	%	Quantity	%
Non-Violations	9	5	4	8	12	10	8	3	8	13	7	9	8	24%	8	20%
Violations	19	15	22	18	28	18	31	40	18	33	31	33	26	76%	31	80%
Total:	28	20	26	26	40	28	39	43	26	46	38	42	34	100%	39	100%
Violations																
Uncontrollable Non-Issued	7	0	7	7	13	5	12	23	11	14	12	18	11	42%	13	42%
Controllable Non-Issued	3	0	1	1	1	4	2	1	1	13	3	3	3	11%	4	13%
Citations	9	15	14	10	14	9	17	16	6	6	16	12	12	47%	14	44%
Total:	19	15	22	18	28	18	31	40	18	33	31	33	26	100%	31	100%
Non-Violations																
Rear Axle Violation	0	0	0	0	0	0	0	0	0	0	0	0	0	0%	0	0%
Emergency Vehicle	2	0	1	3	6	5	1	1	2	3	3	1	2	29%	2	22%
Right Turn	0	0	0	0	0	0	0	0	0	0	0	0	0	0%	0	1%
No Violation Occurred	7	5	3	5	6	5	7	2	6	10	4	8	6	71%	8	78%
Total:	9	5	4	8	12	10	8	3	8	13	7	9	8	100%	10	100%
Uncontrollable Non-Issued Violations																
No Plate	0	2	1	4	4	1	4	5	1	1	4	2	2	22%	3	25%
Out of State Plate	1	0	0	0	0	0	0	0	0	0	0	0	0	1%	0	1%
Glare on Plate	0	0	0	0	0	0	0	1	0	0	0	0	0	1%	0	0%
Illegible Plate	0	0	0	0	0	0	0	0	0	0	0	0	0	0%	0	0%
Plate Obstructed	0	0	0	0	0	0	0	0	0	0	1	0	0	1%	0	1%
Windshield Glare	0	1	4	2	6	3	5	4	4	8	1	3	3	31%	5	36%
Driver Obstructed	0	0	0	0	0	0	0	0	0	0	0	0	0	0%	0	0%
Car Obstructed	0	0	0	1	0	0	0	0	0	0	1	0	0	1%	0	3%
No DMV Match Found	1	0	1	0	1	0	1	4	0	2	2	1	1	10%	3	20%
LASD Expired	0	0	0	0	0	0	0	0	0	0	0	0	0	0%	0	1%
LASD Return	5	2	1	0	2	1	2	9	6	3	3	12	4	135%	2	72%
Other	0	0	0	0	0	0	0	0	0	0	0	0	0	0%	0	0%
Total:	7	0	7	7	13	5	12	23	11	14	12	18	11	100%	13	100%
Controllable Non-Issued Violations																
Framing of Plate	0	0	0	0	0	0	0	0	0	0	0	0	0	0%	0	10%
Focus / Clarity of Plate	0	0	0	0	0	0	0	0	0	0	0	0	0	0%	0	10%
Dark Interior	3	1	1	1	0	3	2	0	1	7	3	3	2	74%	2	62%
Framing of Driver	0	0	0	0	0	0	0	0	0	0	0	0	0	0%	0	0%
Focus / Clarity of Driver	0	0	0	0	1	0	0	0	0	1	0	0	0	6%	0	7%
Framing of Car	0	0	0	0	0	1	0	0	0	0	0	0	0	3%	0	10%
Data Error	0	0	0	0	0	0	0	0	0	0	0	0	0	0%	0	0%
Exposure	0	0	0	0	0	0	0	0	0	0	0	0	0	0%	0	0%
Equipment Malfunction	0	0	0	0	0	0	0	1	0	5	0	0	1	18%	0	0%
ACS Expired	0	0	0	0	0	0	0	0	0	0	0	0	0	0%	0	0%
Total:	3	0	1	1	1	4	2	1	1	13	3	3	3	100%	2	100%
Summary Metrics																
Daily Average Vehicle Passes	11,358	11,353	12,245	10,052	12,677	12,368	10,009	8,825	8,912	8,116	11,737	7,215	Year to Date Average		2010 Average	
Average Issued Speed	27	26	26	28	23	28	29	25	27	25	28	26	10,406		11,654	
Average Issued Red	0.9	2.0	1.9	5.9	3.7	1.3	1.5	3.0	0.9	3.6	1.8	4.9	3		4.7	
Citation / Violation Issuance	47%	100%	64%	56%	50%	50%	55%	40%	33%	18%	52%	36%	50%		44%	
Controllable Issuance Rate	75%	100%	93%	91%	93%	69%	89%	94%	86%	32%	84%	80%	82%		75%	



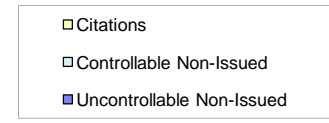
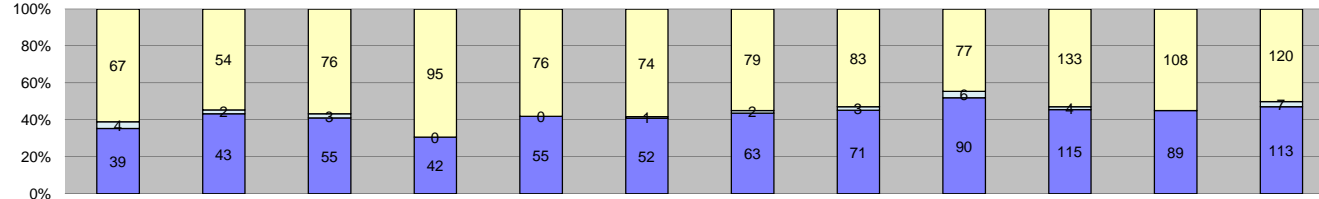
Events	Year to Date Average												2010 Average			
	Jan-11	Feb-11	Mar-11	Apr-11	May-11	Jun-11	Jul-11	Aug-11	Sep-11	Oct-11	Nov-11	Dec-11	Quantity	%	Quantity	%
Non-Violations	10	14	6	12	21	26	20	50	18	21	28	11	20	16%		0
Violations	101	49	83	98	105	118	106	126	117	116	105	107	103	84%		0
Total:	111	63	89	110	126	144	126	176	135	137	133	118	122	100%	0	100%
Violations																
Uncontrollable Non-Issued	33	0	28	27	32	48	48	52	45	42	29	27	34	33%		0
Controllable Non-Issued	1	0	2	3	1	1	2	6	1	4	2	0	2	2%		0
Citations	67	49	53	68	72	69	56	68	71	70	74	80	66	65%		0
Total:	101	49	83	98	105	118	106	126	117	116	105	107	103	100%	0	100%
Non-Violations																
Rear Axle Violation	0	0	1	0	0	0	0	0	0	1	0	0	0	1%		0
Emergency Vehicle	0	1	0	0	2	2	2	1	3	1	1	1	1	6%		0
Right Turn	0	0	0	0	0	0	0	0	0	0	0	0	0	0%		0
No Violation Occurred	10	13	5	12	19	24	18	49	15	19	27	10	18	93%		0
Total:	10	14	6	12	21	26	20	50	18	21	28	11	20	100%	0	100%
Uncontrollable Non-Issued Violations																
No Plate	14	8	7	12	13	18	10	18	15	12	8	7	12	33%		0
Out of State Plate	1	0	0	0	0	0	0	0	0	1	2	2	1	1%		0
Glare on Plate	0	0	0	0	0	0	0	1	0	0	1	0	0	0%		0
Illegible Plate	0	1	2	0	0	0	1	0	0	0	1	0	0	1%		0
Plate Obstructed	1	1	1	0	2	2	2	4	1	0	0	1	1	3%		0
Windshield Glare	0	1	1	4	8	6	7	8	2	2	2	0	3	10%		0
Driver Obstructed	7	1	3	3	1	2	0	1	0	3	3	0	2	6%		0
Car Obstructed	2	1	2	0	0	1	1	2	0	1	0	0	1	2%		0
No DMV Match Found	8	3	9	5	2	8	11	6	6	12	9	3	7	19%		0
LASD Expired	0	0	0	0	0	0	0	0	0	0	0	0	0	0%		0
LASD Return	0	2	3	3	6	11	16	12	21	11	3	14	9	443%		0
Other	0	0	0	0	0	0	0	0	0	0	0	0	0	0%		0
Total:	33	0	28	27	32	48	48	52	45	42	29	27	36	100%	0	100%
Controllable Non-Issued Violations																
Framing of Plate	0	0	0	0	0	0	0	0	0	1	1	0	0	9%		0
Focus / Clarity of Plate	0	0	0	0	0	0	1	0	0	1	0	0	0	9%		0
Dark Interior	1	0	2	3	0	1	1	3	1	2	0	0	1	61%		0
Framing of Driver	0	0	0	0	0	0	0	0	0	0	0	0	0	0%		0
Focus / Clarity of Driver	0	0	0	0	0	0	0	0	0	0	0	0	0	0%		0
Framing of Car	0	0	0	0	0	0	0	0	0	0	0	0	0	0%		0
Data Error	0	0	0	0	0	0	0	0	0	0	0	0	0	0%		0
Exposure	0	0	0	0	0	0	0	0	0	0	0	0	0	0%		0
Equipment Malfunction	0	0	0	0	0	0	0	3	0	0	0	0	0	13%		0
ACS Expired	0	0	0	0	1	0	0	0	0	0	1	0	0	9%		0
Total:	1	0	2	3	1	1	2	6	1	4	2	0	2	100%	0	100%
Summary Metrics																
Daily Average Vehicle Passes	12,330	12,657	13,099	11,303	13,281	12,982	9,384	8,536	9,324	9,596	12,741	7,950	Year to Date Average		2010 Average	
Average Issued Speed	28	27	30	28	29	29	30	27	29	29	28	29	11,098			
Average Issued Red	3.6	1.1	0.8	1.4	1.4	1.7	1.8	3.0	0.8	1.6	1.7	1.3	2			
Citation / Violation Issuance	66%	100%	64%	69%	69%	58%	53%	54%	61%	60%	70%	75%	67%			
Controllable Issuance Rate	99%	100%	96%	96%	99%	99%	97%	92%	99%	95%	97%	100%	97%			



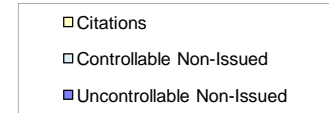
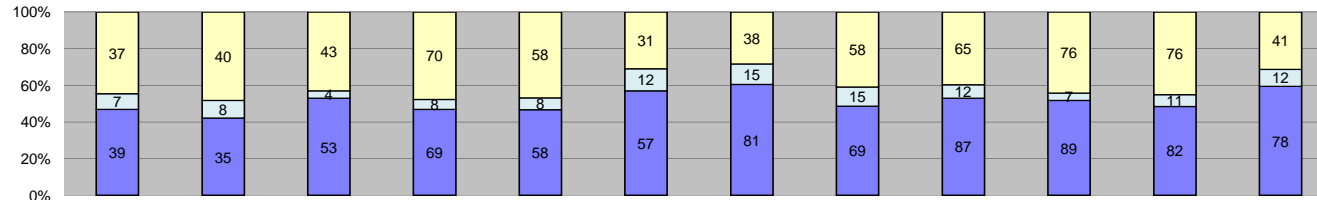
Events	Jan-11	Feb-11	Mar-11	Apr-11	May-11	Jun-11	Jul-11	Aug-11	Sep-11	Oct-11	Nov-11	Dec-11	Year to Date Average		2010 Average	
													Quantity	%	Quantity	%
Non-Violations	22	24	22	22	11	0	0	0	0	0	55	15	14	47%	17	39%
Violations	25	23	27	30	15	0	0	0	0	0	33	43	16	53%	27	61%
Total:	47	47	49	52	26	0	0	0	0	0	88	58	31	100%	45	100%
Violations																
Uncontrollable Non-Issued	9	9	12	12	7	0	0	0	0	0	16	16	7	41%	11	40%
Controllable Non-Issued	0	0	0	0	0	0	0	0	0	0	1	2	0	2%	1	5%
Citations	16	14	15	18	8	0	0	0	0	0	16	25	9	57%	15	55%
Total:	25	23	27	30	15	0	0	0	0	0	33	43	16	100%	27	100%
Non-Violations																
Rear Axle Violation	0	0	0	0	0	0	0	0	0	0	0	0	0	0%	0	0%
Emergency Vehicle	2	1	1	3	1	0	0	0	0	0	1	0	1	5%	1	6%
Right Turn	0	0	0	0	1	0	0	0	0	0	0	1	0	1%	0	0%
No Violation Occurred	20	23	21	19	9	0	0	0	0	0	54	14	13	94%	17	94%
Total:	22	24	22	22	11	0	0	0	0	0	55	15	14	100%	18	100%
Uncontrollable Non-Issued Violations																
No Plate	3	0	5	2	3	0	0	0	0	0	4	3	2	25%	4	34%
Out of State Plate	1	2	0	0	0	0	0	0	0	0	1	1	0	6%	0	2%
Glare on Plate	0	0	0	0	0	0	0	0	0	0	0	0	0	0%	0	0%
Illegible Plate	0	0	0	0	0	0	0	0	0	0	0	0	0	0%	0	0%
Plate Obstructed	0	0	0	0	0	0	0	0	0	0	0	0	0	0%	0	1%
Windshield Glare	0	4	4	7	0	0	0	0	0	0	3	3	2	26%	3	25%
Driver Obstructed	0	0	0	0	0	0	0	0	0	0	0	0	0	0%	0	0%
Car Obstructed	1	0	0	0	1	0	0	0	0	0	4	0	1	7%	0	2%
No DMV Match Found	3	0	1	1	1	0	0	0	0	0	2	6	1	17%	3	28%
LASD Expired	0	0	0	0	0	0	0	0	0	0	0	0	0	0%	0	2%
LASD Return	1	3	2	2	2	0	0	0	0	0	2	2	1	350%	1	88%
Other	0	0	0	0	0	0	0	0	0	0	0	1	0	1%	0	0%
Total:	9	9	12	12	7	0	0	0	0	0	16	16	7	100%	11	100%
Controllable Non-Issued Violations																
Framing of Plate	0	0	0	0	0	0	0	0	0	0	0	0	0	0%	0	0%
Focus / Clarity of Plate	0	0	0	0	0	0	0	0	0	0	0	0	0	0%	0	0%
Dark Interior	0	1	0	0	0	0	0	0	0	0	1	2	0	100%	1	88%
Framing of Driver	0	0	0	0	0	0	0	0	0	0	0	0	0	0%	0	0%
Focus / Clarity of Driver	0	0	0	0	0	0	0	0	0	0	0	0	0	0%	0	13%
Framing of Car	0	0	0	0	0	0	0	0	0	0	0	0	0	0%	0	0%
Data Error	0	0	0	0	0	0	0	0	0	0	0	0	0	0%	0	0%
Exposure	0	0	0	0	0	0	0	0	0	0	0	0	0	0%	0	0%
Equipment Malfunction	0	0	0	0	0	0	0	0	0	0	0	0	0	0%	0	0%
ACS Expired	0	0	0	0	0	0	0	0	0	0	0	0	0	0%	0	0%
Total:	0	0	0	0	0	0	0	0	0	0	1	2	0	100%	1	100%
Summary Metrics																
Daily Average Vehicle Passes	8,789	9,065	9,569	7,770	6,377	0	0	0	0	0	9,082	5,232	Year to Date Average		2010 Average	
Average Issued Speed	32	32	32	35	28	0	0	0	0	0	31	34	4,657		8,907	
Average Issued Red	3.3	0.8	1.8	1.2	3.4	0	0	0	0	0	0.7	0.4	2		2.0	
Citation / Violation Issuance	64%	61%	56%	60%	53%	0%	0%	0%	0%	0%	48%	58%	57%		55%	
Controllable Issuance Rate	100%	100%	100%	100%	100%	0%	0%	0%	0%	0%	94%	93%	98%		90%	



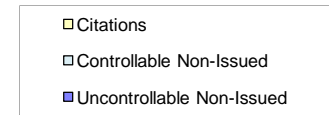
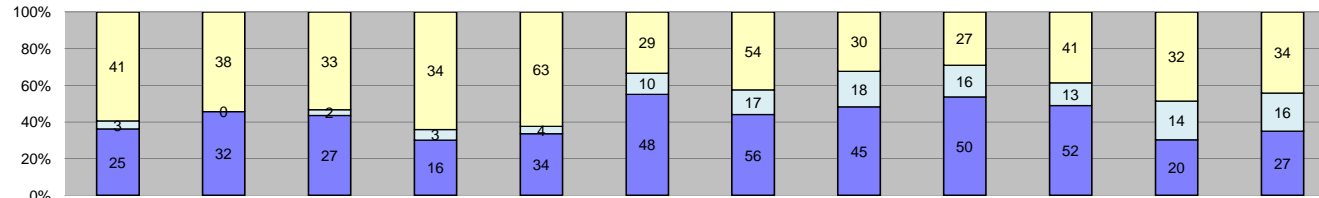
Events	Jan-11	Feb-11	Mar-11	Apr-11	May-11	Jun-11	Jul-11	Aug-11	Sep-11	Oct-11	Nov-11	Dec-11	Year to Date Average		2010 Average	
													Quantity	%	Quantity	%
Non-Violations	5	6	9	3	8	52	14	9	11	6	5	9	11	11%	5	7%
Violations	61	72	54	82	98	86	98	113	118	138	117	112	96	89%	71	93%
Total:	66	78	63	85	106	138	112	122	129	144	122	121	107	100%	76	100%
Violations																
Uncontrollable Non-Issued	12	27	11	19	15	19	38	37	30	48	32	25	26	27%	15	22%
Controllable Non-Issued	12	4	2	6	4	2	8	8	7	10	1	12	6	7%	5	7%
Citations	37	41	41	57	79	65	52	68	81	80	84	75	63	66%	51	72%
Total:	61	72	54	82	98	86	98	113	118	138	117	112	96	100%	71	100%
Non-Violations																
Rear Axle Violation	0	0	0	0	0	0	0	0	0	1	0	1	0	1%	0	1%
Emergency Vehicle	2	0	1	0	2	3	1	1	1	0	2	2	1	11%	0	7%
Right Turn	0	0	0	0	0	0	0	0	0	0	0	0	0	0%	0	0%
No Violation Occurred	3	6	8	3	6	49	13	8	10	5	3	6	10	88%	5	91%
Total:	5	6	9	3	8	52	14	9	11	6	5	9	11	100%	6	100%
Uncontrollable Non-Issued Violations																
No Plate	5	7	3	2	3	3	4	5	5	11	8	5	5	19%	4	23%
Out of State Plate	1	1	3	2	0	5	4	6	0	5	2	2	3	10%	2	12%
Glare on Plate	0	0	0	0	0	0	0	0	0	0	0	0	0	0%	0	1%
Illegible Plate	0	0	0	0	1	0	0	0	0	0	0	1	0	1%	0	2%
Plate Obstructed	1	0	0	0	0	0	0	0	0	0	0	0	0	0%	0	1%
Windshield Glare	1	6	2	3	3	3	8	1	4	2	2	1	3	12%	2	14%
Driver Obstructed	1	2	0	0	1	1	2	0	1	1	0	0	1	3%	1	3%
Car Obstructed	0	0	0	1	0	1	0	0	0	0	0	1	0	1%	0	1%
No DMV Match Found	2	6	3	6	6	3	12	13	9	13	11	11	8	30%	6	34%
LASD Expired	0	0	0	0	0	0	0	0	0	0	0	0	0	0%	0	2%
LASD Return	1	5	0	5	1	3	8	12	11	16	9	4	6	99%	1	44%
Other	0	0	0	0	0	0	0	0	0	0	0	0	0	0%	0	0%
Total:	12	27	11	19	15	19	38	37	30	48	32	25	26	100%	16	100%
Controllable Non-Issued Violations																
Framing of Plate	0	0	0	0	0	0	0	0	0	0	0	0	0	0%	0	0%
Focus / Clarity of Plate	0	0	0	0	0	0	0	0	0	0	0	0	0	0%	0	0%
Dark Interior	9	4	2	6	4	2	8	3	4	4	1	4	4	67%	2	69%
Framing of Driver	0	0	0	0	0	0	0	0	0	0	0	0	0	0%	0	0%
Focus / Clarity of Driver	0	0	0	0	0	0	0	0	0	0	0	0	0	0%	0	0%
Framing of Car	0	0	0	0	0	0	0	0	0	0	0	0	0	0%	0	0%
Data Error	3	0	0	0	0	0	0	0	0	0	0	0	0	4%	0	0%
Exposure	0	0	0	0	0	0	0	0	0	0	0	0	0	0%	0	10%
Equipment Malfunction	0	0	0	0	0	0	5	3	6	0	8	2	2	29%	1	21%
ACS Expired	0	0	0	0	0	0	0	0	0	0	0	0	0	0%	0	0%
Total:	12	4	2	6	4	2	8	8	7	10	1	12	6	100%	3	100%
Summary Metrics																
Daily Average Vehicle Passes	9,907	10,374	10,793	12,094	9,952	10,051	8,139	7,109	7,157	7,322	10,238	5,988	Year to Date Average		2010 Average	
Average Issued Speed	33	37	34	33	35	33	36	33	33	32	35	33	9,094		9,914	
Average Issued Red	0.8	1.6	0.8	0.6	1.1	0.8	0.6	1.7	0.9	1.0	0.6	0.6	1		1.1	
Citation / Violation Issuance	61%	57%	76%	70%	81%	76%	53%	60%	69%	58%	72%	67%	66%		72%	
Controllable Issuance Rate	76%	91%	95%	90%	95%	97%	87%	89%	92%	89%	99%	86%	91%		93%	



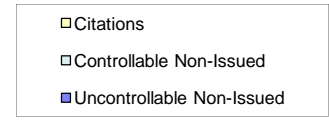
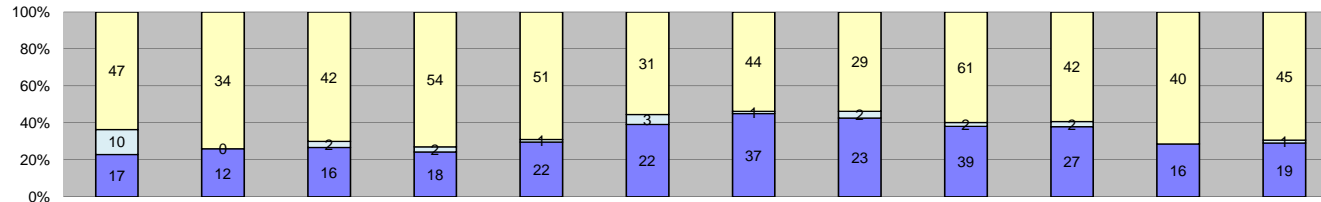
Events	Jan-11	Feb-11	Mar-11	Apr-11	May-11	Jun-11	Jul-11	Aug-11	Sep-11	Oct-11	Nov-11	Dec-11	Year to Date Average		2010 Average	
	Quantity	Quantity	Quantity	Quantity	Quantity	Quantity	Quantity	Quantity	Quantity	Quantity	Quantity	Quantity	Quantity	%	%	%
Events																
Non-Violations	11	10	13	5	5	7	7	10	10	14	13	13	10	6%	5	4%
Violations	110	99	134	137	131	127	144	157	173	252	197	240	158	94%	133	96%
Total:	121	109	147	142	136	134	151	167	183	266	210	253	168	100%	139	100%
Violations																
Uncontrollable Non-Issued	39	43	55	42	55	52	63	71	90	115	89	113	69	44%	51	38%
Controllable Non-Issued	4	2	3	0	0	1	2	3	6	4	0	7	3	2%	6	4%
Citations	67	54	76	95	76	74	79	83	77	133	108	120	87	55%	77	58%
Total:	110	99	134	137	131	127	144	157	173	252	197	240	158	100%	133	100%
Non-Violations																
Rear Axle Violation	1	0	1	0	0	0	0	3	0	0	2	4	1	9%	1	12%
Emergency Vehicle	4	5	3	1	2	4	4	0	2	5	3	1	3	29%	3	40%
Right Turn	0	0	0	0	0	0	0	0	0	0	0	0	0	0%	0	0%
No Violation Occurred	6	5	9	4	3	3	3	7	8	9	8	8	6	62%	4	49%
Total:	11	10	13	5	5	7	7	10	10	14	13	13	10	100%	9	100%
Uncontrollable Non-Issued Violations																
No Plate	15	11	22	15	16	14	21	11	28	32	31	38	21	31%	16	32%
Out of State Plate	3	1	2	1	1	4	3	5	2	2	1	3	2	3%	2	5%
Glare on Plate	0	0	0	1	1	0	0	0	1	1	0	0	0	0%	0	0%
Illegible Plate	0	0	0	0	0	0	0	0	0	1	1	2	0	0%	0	1%
Plate Obstructed	3	3	1	1	0	1	4	2	3	3	3	2	2	3%	2	3%
Windshield Glare	3	7	11	7	15	7	18	15	21	13	12	8	11	17%	11	21%
Driver Obstructed	3	6	4	2	0	1	3	3	0	4	2	2	3	4%	2	4%
Car Obstructed	4	3	3	5	3	9	5	2	6	12	6	9	6	8%	6	13%
No DMV Match Found	8	7	5	6	11	10	2	15	10	14	13	8	9	13%	7	14%
LASD Expired	0	0	0	0	0	0	0	0	0	0	0	0	0	0%	1	2%
LASD Return	0	5	7	4	8	6	7	18	19	33	20	40	14	52%	3	77%
Other	0	0	0	0	0	0	0	0	0	0	0	1	0	0%	0	0%
Total:	39	43	55	42	55	52	63	71	90	115	89	113	69	100%	50	100%
Controllable Non-Issued Violations																
Framing of Plate	0	0	0	0	0	0	0	0	0	0	0	0	0	0%	0	0%
Focus / Clarity of Plate	0	0	0	0	0	0	0	0	0	0	0	0	0	0%	0	3%
Dark Interior	1	2	1	0	0	1	1	3	5	4	0	6	2	75%	2	51%
Framing of Driver	0	0	0	0	0	0	0	0	0	0	0	0	0	0%	0	0%
Focus / Clarity of Driver	3	0	1	0	0	0	1	0	0	0	0	1	1	19%	0	10%
Framing of Car	0	0	0	0	0	0	0	0	0	0	0	0	0	0%	0	0%
Data Error	0	0	0	0	0	0	0	0	0	0	0	0	0	0%	0	0%
Exposure	0	0	1	0	0	0	0	0	0	0	0	0	0	3%	0	3%
Equipment Malfunction	0	0	0	0	0	0	0	0	1	0	0	0	0	3%	1	28%
ACS Expired	0	0	0	0	0	0	0	0	0	0	0	0	0	0%	0	5%
Total:	4	2	3	0	0	1	2	3	6	4	0	7	3	100%	3	100%
Summary Metrics																
Daily Average Vehicle Passes	11,381	19,849	20,588	19,226	21,627	18,911	18,153	15,896	14,751	15,486	21,760	12,347	Year to Date Average		2010 Average	
Average Issued Speed	36	34	34	35	36	35	36	35	35	36	34	35	17,498		21,100	
Average Issued Red	0.6	1.2	1.1	1.7	1.2	1.3	0.8	0.5	0.5	0.7	0.7	0.9	1		0.7	
Citation / Violation Issuance	61%	55%	57%	69%	58%	58%	55%	53%	45%	53%	55%	50%	56%		58%	
Controllable Issuance Rate	94%	96%	96%	100%	100%	99%	98%	97%	93%	97%	100%	94%	97%		92%	



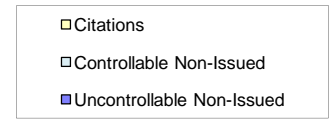
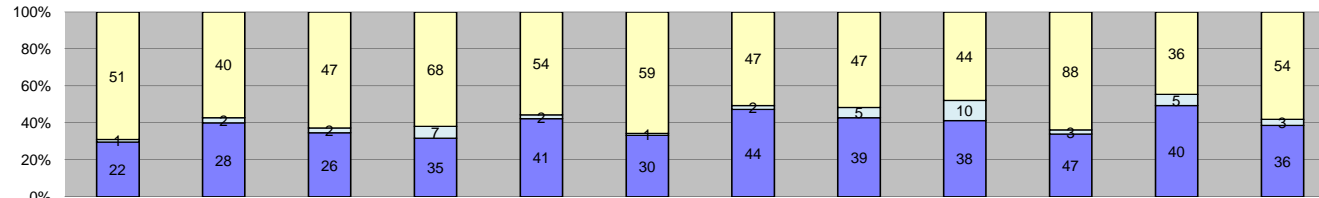
Events	Jan-11	Feb-11	Mar-11	Apr-11	May-11	Jun-11	Jul-11	Aug-11	Sep-11	Oct-11	Nov-11	Dec-11	Year to Date Average		2010 Average	
	Quantity	Quantity	Quantity	Quantity	Quantity	Quantity	Quantity	Quantity	Quantity	Quantity	Quantity	Quantity	Quantity	%	Quantity	%
Events	11	8	13	14	12	15	17	22	9	13	27	7	14	10%	10	8%
Non-Violations	83	83	100	147	124	100	134	142	164	172	169	131	129	90%	120	92%
Total:	94	91	113	161	136	115	151	164	173	185	196	138	143	100%	130	100%
Violations																
Uncontrollable Non-Issued	39	35	53	69	58	57	81	69	87	89	82	78	66	51%	44	37%
Controllable Non-Issued	7	8	4	8	8	12	15	15	12	7	11	12	10	8%	19	16%
Citations	37	40	43	70	58	31	38	58	65	76	76	41	53	41%	56	47%
Total:	83	83	100	147	124	100	134	142	164	172	169	131	129	100%	120	100%
Non-Violations																
Rear Axle Violation	0	1	1	0	1	0	2	0	1	1	1	2	1	6%	1	4%
Emergency Vehicle	4	2	4	5	6	1	3	8	0	1	5	0	3	23%	4	28%
Right Turn	0	0	1	0	0	0	0	1	1	0	0	0	0	2%	0	2%
No Violation Occurred	7	5	7	9	5	14	12	13	7	11	21	5	10	69%	9	66%
Total:	11	8	13	14	12	15	17	22	9	13	27	7	14	100%	14	100%
Uncontrollable Non-Issued Violations																
No Plate	11	8	8	19	19	12	19	17	19	24	15	16	16	23%	13	28%
Out of State Plate	3	1	4	0	3	1	1	1	2	5	8	2	3	4%	2	3%
Glare on Plate	0	2	3	0	0	0	0	1	3	3	0	1	1	2%	1	2%
Illegible Plate	1	1	0	0	1	2	2	0	0	1	2	1	1	1%	2	3%
Plate Obstructed	1	0	0	0	0	3	0	1	1	1	2	1	1	1%	1	2%
Windshield Glare	5	6	15	21	8	15	17	12	4	9	5	2	10	15%	10	20%
Driver Obstructed	4	2	3	2	0	0	1	2	4	1	0	4	2	3%	1	3%
Car Obstructed	0	2	4	3	1	1	4	3	4	3	5	1	3	4%	2	4%
No DMV Match Found	6	6	8	10	7	6	7	4	8	13	16	8	8	12%	7	14%
LASD Expired	0	0	0	0	0	0	0	0	0	0	0	1	0	0%	0	1%
LASD Return	8	7	8	14	18	17	30	24	41	29	29	41	22	224%	8	65%
Other	0	0	0	0	1	0	0	4	1	0	0	0	1	1%	2	4%
Total:	39	35	53	69	58	57	81	69	87	89	82	78	66	100%	48	100%
Controllable Non-Issued Violations																
Framing of Plate	0	0	0	1	0	0	0	0	0	1	1	1	0	3%	1	5%
Focus / Clarity of Plate	0	1	0	0	0	0	0	2	1	0	2	5	1	9%	2	14%
Dark Interior	5	7	4	5	8	11	13	12	8	5	4	6	7	74%	8	64%
Framing of Driver	0	0	0	0	0	0	0	0	0	0	1	0	0	1%	0	1%
Focus / Clarity of Driver	1	0	0	2	0	1	1	1	2	1	1	0	1	8%	2	14%
Framing of Car	1	0	0	0	0	0	1	0	0	0	1	0	0	3%	0	1%
Data Error	0	0	0	0	0	0	0	0	0	0	0	0	0	0%	0	0%
Exposure	0	0	0	0	0	0	0	0	0	0	0	0	0	0%	0	0%
Equipment Malfunction	0	0	0	0	0	0	0	0	0	0	0	0	0	0%	0	0%
ACS Expired	0	0	0	0	0	0	0	0	1	0	1	0	0	2%	0	0%
Total:	7	8	4	8	8	12	15	15	12	7	11	12	10	100%	12	100%
Summary Metrics																
Daily Average Vehicle Passes	20,479	19,333	19,853	18,666	21,219	18,845	17,111	12,883	15,074	15,261	21,195	11,308	Year to Date Average		2010 Average	
Average Issued Speed	36	35	36	39	38	37	37	39	37	35	34	35	17,602		19,777	
Average Issued Red	2.2	1.3	1.2	0.7	0.8	0.5	1.4	0.7	0.6	0.7	1.1	0.7	1		0.9	
Citation / Violation Issuance	45%	48%	43%	48%	47%	31%	28%	41%	40%	44%	45%	31%	41%		47%	
Controllable Issuance Rate	84%	83%	91%	90%	88%	72%	72%	79%	84%	92%	87%	77%	83%		78%	



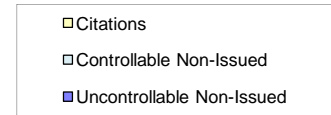
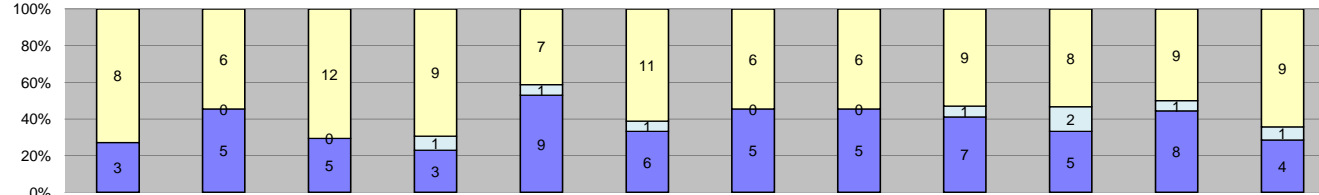
Events	Jan-11	Feb-11	Mar-11	Apr-11	May-11	Jun-11	Jul-11	Aug-11	Sep-11	Oct-11	Nov-11	Dec-11	Year to Date Average		2010 Average	
													Quantity	%	Quantity	%
Non-Violations	19	27	28	38	26	23	55	33	40	36	39	34	33	28%	31	28%
Violations	69	70	62	53	101	87	127	93	93	106	66	77	84	72%	79	72%
Total:	88	97	90	91	127	110	182	126	133	142	105	111	117	100%	109	100%
Violations																
Uncontrollable Non-Issued	25	32	27	16	34	48	56	45	50	52	20	27	36	43%	29	37%
Controllable Non-Issued	3	0	2	3	4	10	17	18	16	13	14	16	10	12%	4	5%
Citations	41	38	33	34	63	29	54	30	27	41	32	34	38	45%	46	59%
Total:	69	70	62	53	101	87	127	93	93	106	66	77	84	100%	79	100%
Non-Violations																
Rear Axle Violation	0	0	0	0	0	0	0	0	0	0	0	1	0	0%	0	0%
Emergency Vehicle	0	1	1	1	0	2	2	0	1	0	1	1	1	3%	1	3%
Right Turn	0	0	0	0	0	0	0	0	0	0	0	0	0	0%	0	0%
No Violation Occurred	19	26	27	37	26	21	53	33	39	36	38	32	32	97%	31	97%
Total:	19	27	28	38	26	23	55	33	40	36	39	34	33	100%	31	100%
Uncontrollable Non-Issued Violations																
No Plate	5	7	9	4	8	12	14	15	13	15	5	5	9	26%	7	23%
Out of State Plate	3	2	1	0	2	1	1	0	1	1	2	1	1	3%	1	3%
Glare on Plate	0	0	0	0	0	0	0	0	0	0	0	0	0	0%	0	0%
Illegible Plate	0	0	0	0	0	0	1	0	0	0	0	0	0	0%	0	0%
Plate Obstructed	0	0	1	0	0	0	0	0	0	0	0	0	0	0%	0	1%
Windshield Glare	1	7	4	2	1	10	5	7	6	7	2	3	5	13%	5	17%
Driver Obstructed	0	1	1	0	1	0	0	0	0	0	0	0	0	1%	0	1%
Car Obstructed	0	0	0	0	0	0	0	0	0	0	0	0	0	0%	0	0%
No DMV Match Found	6	10	4	1	8	5	13	4	9	7	5	2	6	17%	7	23%
LASD Expired	0	0	0	0	0	0	0	0	0	2	0	0	0	0%	1	2%
LASD Return	2	2	2	2	6	7	6	10	11	8	6	9	6	61%	1	47%
Other	8	3	5	7	8	13	16	9	10	12	0	7	8	23%	7	25%
Total:	25	32	27	16	34	48	56	45	50	52	20	27	36	100%	29	100%
Controllable Non-Issued Violations																
Framing of Plate	0	0	0	0	0	0	0	0	0	0	0	1	0	1%	0	0%
Focus / Clarity of Plate	0	0	0	0	0	0	0	0	0	0	0	0	0	0%	0	0%
Dark Interior	1	0	2	2	0	2	1	7	1	1	1	2	2	17%	2	67%
Framing of Driver	0	0	0	0	0	0	0	0	0	1	2	1	0	3%	0	0%
Focus / Clarity of Driver	0	0	0	0	0	0	0	0	0	0	0	0	0	0%	0	3%
Framing of Car	0	0	0	0	0	7	16	11	15	11	11	11	7	71%	0	3%
Data Error	0	0	0	1	0	1	0	0	0	0	0	0	0	2%	0	3%
Exposure	1	0	0	0	0	0	0	0	0	0	0	1	0	2%	0	17%
Equipment Malfunction	0	0	0	0	3	0	0	0	0	0	0	0	0	3%	0	3%
ACS Expired	1	0	0	0	1	0	0	0	0	0	0	0	0	2%	0	3%
Total:	3	0	2	3	4	10	17	18	16	13	14	16	10	100%	3	100%
Summary Metrics																
Daily Average Vehicle Passes	2,922	2,906	2,640	2,874	3,234	3,274	2,545	2,346	2,277	2,286	3,020	1,644	Year to Date Average		2010 Average	
Average Issued Speed	22	25	22	23	22	21	21	22	23	22	22	22	2,664		3,096	
Average Issued Red	12.0	13.7	9.8	10.6	11.4	19.8	19.9	18.9	12.7	17.1	12.2	15.8	14		12.4	
Citation / Violation Issuance	59%	54%	53%	64%	62%	33%	43%	32%	29%	39%	48%	44%	47%		59%	
Controllable Issuance Rate	93%	100%	94%	92%	94%	74%	76%	63%	63%	76%	70%	68%	80%		93%	



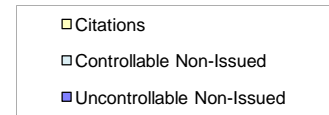
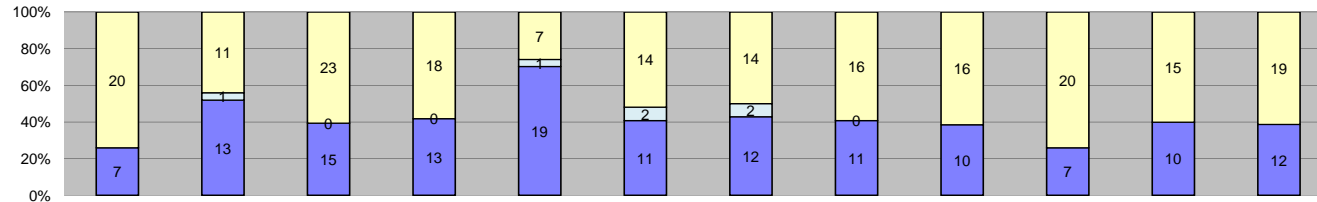
Events	Jan-11	Feb-11	Mar-11	Apr-11	May-11	Jun-11	Jul-11	Aug-11	Sep-11	Oct-11	Nov-11	Dec-11	Year to Date Average		2010 Average	
	Quantity	Quantity	Quantity	Quantity	Quantity	Quantity	Quantity	Quantity	Quantity	Quantity	Quantity	Quantity	Quantity	%	Quantity	%
Non-Violations	8	7	8	11	6	11	14	12	13	18	12	8	11	14%	11	14%
Violations	74	46	60	74	74	56	82	54	102	71	56	65	68	86%	67	86%
Total:	82	53	68	85	80	67	96	66	115	89	68	73	79	100%	77	100%
Violations																
Uncontrollable Non-Issued	17	12	16	18	22	22	37	23	39	27	16	19	22	33%	18	28%
Controllable Non-Issued	10	0	2	2	1	3	1	2	2	2	0	1	2	3%	2	3%
Citations	47	34	42	54	51	31	44	29	61	42	40	45	43	64%	46	69%
Total:	74	46	60	74	74	56	82	54	102	71	56	65	68	100%	67	100%
Non-Violations																
Rear Axle Violation	1	0	0	1	0	1	1	1	0	0	0	0	0	4%	0	2%
Emergency Vehicle	0	0	0	1	0	1	2	1	0	0	0	0	0	4%	0	2%
Right Turn	0	0	0	0	0	0	0	0	0	0	0	0	0	0%	0	0%
No Violation Occurred	7	7	8	9	6	9	11	10	13	18	12	8	10	92%	11	96%
Total:	8	7	8	11	6	11	14	12	13	18	12	8	11	100%	11	100%
Uncontrollable Non-Issued Violations																
No Plate	7	0	4	8	8	5	2	7	11	5	9	8	6	28%	8	4650%
Out of State Plate	0	1	2	1	1	0	2	2	1	0	1	0	1	4%	1	600%
Glare on Plate	0	0	0	0	0	0	0	0	0	0	0	0	0	0%	0	0%
Illegible Plate	0	0	0	0	0	0	1	0	0	0	0	0	0	0%	0	200%
Plate Obstructed	1	0	0	0	1	0	0	0	0	0	0	0	0	1%	0	200%
Windshield Glare	0	1	0	0	1	3	3	2	1	1	0	0	1	4%	2	1000%
Driver Obstructed	1	1	4	0	1	1	1	2	0	0	1	1	1	5%	1	400%
Car Obstructed	1	0	0	0	1	1	0	0	0	0	1	0	0	1%	1	400%
No DMV Match Found	5	8	5	5	4	4	10	4	8	14	2	6	6	28%	5	2900%
LASD Expired	1	0	0	0	0	0	0	0	0	0	0	0	0	0%	1	350%
LASD Return	1	1	1	4	5	8	18	6	18	7	3	3	6	288%	1	71%
Other	0	0	0	0	0	0	0	0	0	0	0	0	0	0%	0	150%
Total:	17	12	16	18	22	22	37	23	39	27	16	19	22	100%	0	100%
Controllable Non-Issued Violations																
Framing of Plate	0	0	1	0	0	0	0	0	0	0	0	0	0	4%	0	0%
Focus / Clarity of Plate	0	0	0	0	0	0	0	0	0	0	0	0	0	0%	0	0%
Dark Interior	3	0	1	2	1	3	1	1	2	2	0	0	1	62%	1	86%
Framing of Driver	0	0	0	0	0	0	0	0	0	0	0	0	0	0%	0	0%
Focus / Clarity of Driver	0	0	0	0	0	0	0	1	0	0	0	1	0	8%	0	0%
Framing of Car	0	0	0	0	0	0	0	0	0	0	0	0	0	0%	0	0%
Data Error	7	0	0	0	0	0	0	0	0	0	0	0	1	27%	0	0%
Exposure	0	0	0	0	0	0	0	0	0	0	0	0	0	0%	0	14%
Equipment Malfunction	0	0	0	0	0	0	0	0	0	0	0	0	0	0%	0	0%
ACS Expired	0	0	0	0	0	0	0	0	0	0	0	0	0	0%	0	0%
Total:	10	0	2	2	1	3	1	2	2	2	0	1	2	100%	1	100%
Summary Metrics																
Daily Average Vehicle Passes	6,760	6,860	5,500	6,535	7,391	7,098	6,280	5,376	5,230	5,551	6,985	3,333	Year to Date Average		2010 Average	
Average Issued Speed	21	21	21	21	21	21	21	21	21	21	22	21	6,075		7,111	
Average Issued Red	2.0	2.7	2.1	3.7	2.5	2.2	3.1	3.8	2.9	1.8	2.5	3.0	3		2.6	
Citation / Violation Issuance	64%	74%	70%	73%	69%	55%	54%	54%	60%	59%	71%	69%	64%		69%	
Controllable Issuance Rate	82%	100%	95%	96%	98%	91%	98%	94%	97%	95%	100%	98%	95%		70%	



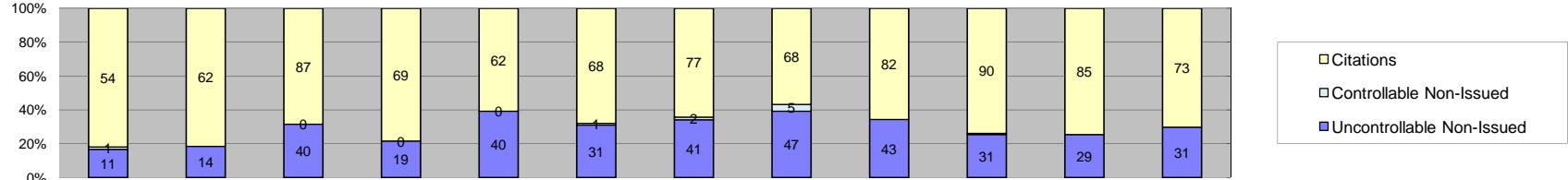
Events	Jan-11	Feb-11	Mar-11	Apr-11	May-11	Jun-11	Jul-11	Aug-11	Sep-11	Oct-11	Nov-11	Dec-11	Year to Date Average		2010 Average	
													Quantity	%	Quantity	%
Non-Violations	36	25	28	28	43	31	38	29	28	31	43	49	34	27%	30	25%
Violations	74	70	75	110	97	90	93	91	92	138	81	93	92	73%	93	75%
Total:	110	95	103	138	140	121	131	120	120	169	124	142	126	100%	123	100%
Violations																
Uncontrollable Non-Issued	22	28	26	35	41	30	44	39	38	47	40	36	36	39%	33	35%
Controllable Non-Issued	1	2	2	7	2	1	2	5	10	3	5	3	4	4%	4	4%
Citations	51	40	47	68	54	59	47	47	44	88	36	54	53	58%	57	61%
Total:	74	70	75	110	97	90	93	91	92	138	81	93	92	100%	93	100%
Non-Violations																
Rear Axle Violation	1	1	0	0	0	0	1	0	0	0	1	1	0	1%	0	1%
Emergency Vehicle	13	1	9	6	7	4	4	5	4	2	7	5	6	16%	4	11%
Right Turn	0	0	0	0	0	1	0	0	0	0	0	1	0	0%	0	0%
No Violation Occurred	22	23	19	22	36	26	33	24	24	29	35	42	28	82%	30	87%
Total:	36	25	28	28	43	31	38	29	28	31	43	49	34	100%	34	100%
Uncontrollable Non-Issued Violations																
No Plate	8	9	8	12	12	12	14	11	14	13	12	18	12	34%	11	37%
Out of State Plate	2	2	0	1	3	1	1	1	2	0	2	1	1	4%	2	6%
Glare on Plate	0	0	0	0	0	0	0	0	0	0	0	0	0	0%	0	0%
Illegible Plate	0	0	0	0	0	0	0	0	0	1	0	0	0	0%	0	0%
Plate Obstructed	0	1	0	0	2	0	1	0	1	1	0	0	1	1%	0	1%
Windshield Glare	1	2	7	8	11	5	6	7	2	3	4	3	5	14%	6	19%
Driver Obstructed	1	0	1	0	0	1	1	1	0	3	0	0	1	2%	1	4%
Car Obstructed	0	0	0	1	0	1	0	0	0	1	0	0	0	1%	0	1%
No DMV Match Found	5	8	4	8	7	4	11	3	11	9	10	1	7	19%	8	25%
LASD Expired	0	0	0	0	0	0	0	0	0	0	0	0	0	0%	1	2%
LASD Return	5	6	6	5	6	6	10	16	8	16	12	12	9	251%	2	125%
Other	0	0	0	0	0	0	0	0	0	0	0	1	0	0%	0	0%
Total:	22	28	26	35	41	30	44	39	38	47	40	36	36	100%	31	100%
Controllable Non-Issued Violations																
Framing of Plate	0	0	0	0	0	0	0	0	0	0	0	0	0	0%	0	0%
Focus / Clarity of Plate	0	0	0	0	0	0	0	0	0	0	0	0	0	0%	0	0%
Dark Interior	1	2	2	6	2	0	2	4	10	3	5	3	3	93%	1	85%
Framing of Driver	0	0	0	0	0	0	0	0	0	0	0	0	0	0%	0	0%
Focus / Clarity of Driver	0	0	0	0	0	0	0	1	0	0	0	0	0	2%	0	5%
Framing of Car	0	0	0	0	0	1	0	0	0	0	0	0	0	2%	0	0%
Data Error	0	0	0	1	0	0	0	0	0	0	0	0	0	2%	0	0%
Exposure	0	0	0	0	0	0	0	0	0	0	0	0	0	0%	0	10%
Equipment Malfunction	0	0	0	0	0	0	0	0	0	0	0	0	0	0%	0	0%
ACS Expired	0	0	0	0	0	0	0	0	0	0	0	0	0	0%	0	0%
Total:	1	2	2	7	2	1	2	5	10	3	5	3	4	100%	2	100%
Summary Metrics																
Daily Average Vehicle Passes	9,856	10,473	11,037	11,693	12,622	11,253	10,986	11,850	12,094	11,799	10,184	10,621	Year to Date Average		2010 Average	
Average Issued Speed	25	26	26	27	27	27	27	29	27	29	27	26	11,206		11,447	
Average Issued Red	12.1	10.1	9.8	11.5	9.3	11.7	14.0	9.1	9.5	8.8	13.1	12.3	11		12.8	
Citation / Violation Issuance	69%	57%	63%	62%	56%	66%	51%	52%	48%	64%	44%	58%	57%		61%	
Controllable Issuance Rate	98%	95%	96%	91%	96%	98%	96%	90%	81%	97%	88%	95%	93%		91%	



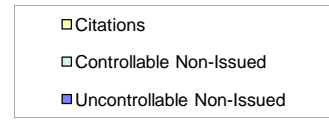
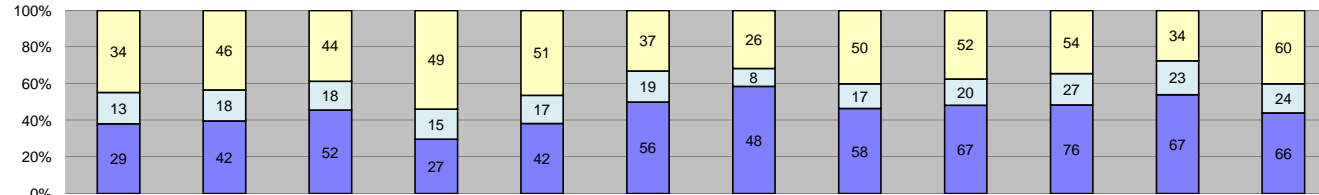
Events	Jan-11	Feb-11	Mar-11	Apr-11	May-11	Jun-11	Jul-11	Aug-11	Sep-11	Oct-11	Nov-11	Dec-11	Year to Date Average		2010 Average	
													Quantity	%	Quantity	%
Non-Violations	4	1	3	3	3	4	1	4	7	3	3	3	3	18%	3	14%
Violations	11	11	17	13	17	18	11	11	17	15	18	14	14	82%	22	86%
Total:	15	12	20	16	20	22	12	15	24	18	21	17	18	100%	25	100%
Violations																
Uncontrollable Non-Issued	3	5	5	3	9	6	5	5	7	5	8	4	5	38%	7	31%
Controllable Non-Issued	0	0	0	1	1	1	0	0	1	2	1	1	1	5%	3	14%
Citations	8	6	12	9	7	11	6	6	9	8	9	9	8	58%	12	55%
Total:	11	11	17	13	17	18	11	11	17	15	18	14	14	100%	22	100%
Non-Violations																
Rear Axle Violation	0	0	1	0	0	0	0	0	0	0	0	0	0	3%	0	0%
Emergency Vehicle	1	0	1	1	1	2	0	0	3	1	0	2	1	31%	1	23%
Right Turn	0	0	0	0	0	0	0	0	0	0	0	0	0	0%	0	0%
No Violation Occurred	3	1	1	2	2	2	1	4	4	2	3	1	2	67%	3	77%
Total:	4	1	3	3	3	4	1	4	7	3	3	3	3	100%	4	100%
Uncontrollable Non-Issued Violations																
No Plate	2	1	1	3	4	0	2	2	4	1	2	1	2	35%	2	30%
Out of State Plate	0	1	0	0	0	0	0	0	0	0	0	0	0	2%	0	6%
Glare on Plate	0	0	0	0	0	0	0	0	0	0	0	0	0	0%	0	0%
Illegible Plate	0	0	0	0	0	0	0	0	0	0	0	0	0	0%	0	1%
Plate Obstructed	0	0	0	0	0	0	0	0	0	0	1	0	0	2%	0	2%
Windshield Glare	0	0	0	0	0	1	1	0	0	1	2	0	0	8%	1	15%
Driver Obstructed	0	0	0	0	0	0	0	0	0	0	0	0	0	0%	0	0%
Car Obstructed	0	1	1	0	1	2	0	0	0	0	1	0	1	9%	0	4%
No DMV Match Found	1	0	2	0	4	1	1	2	1	0	0	1	1	20%	2	25%
LASD Expired	0	0	0	0	0	0	0	0	0	0	0	0	0	0%	0	0%
LASD Return	0	2	1	0	0	2	1	1	2	3	2	2	1	200%	1	61%
Other	0	0	0	0	0	0	0	0	0	0	0	0	0	0%	0	0%
Total:	3	5	5	3	9	6	5	5	7	5	8	4	5	100%	7	100%
Controllable Non-Issued Violations																
Framing of Plate	0	0	0	0	0	0	0	0	0	0	0	0	0	0%	0	0%
Focus / Clarity of Plate	0	0	0	0	0	0	0	0	0	0	0	0	0	0%	0	4%
Dark Interior	0	0	0	1	1	1	0	0	1	2	1	0	1	88%	1	61%
Framing of Driver	0	0	0	0	0	0	0	0	0	0	0	0	0	0%	0	0%
Focus / Clarity of Driver	0	0	0	0	0	0	0	0	0	0	0	0	0	0%	0	4%
Framing of Car	0	0	0	0	0	0	0	0	0	0	0	1	0	13%	0	0%
Data Error	0	0	0	0	0	0	0	0	0	0	0	0	0	0%	0	0%
Exposure	0	0	0	0	0	0	0	0	0	0	0	0	0	0%	0	0%
Equipment Malfunction	0	0	0	0	0	0	0	0	0	0	0	0	0	0%	1	30%
ACS Expired	0	0	0	0	0	0	0	0	0	0	0	0	0	0%	0	0%
Total:	0	0	0	1	1	1	0	0	1	2	1	1	1	100%	2	100%
Summary Metrics																
Daily Average Vehicle Passes	11,716	13,857	14,673	13,493	14,288	14,743	13,243	15,093	14,708	12,498	12,107	12,414	Year to Date Average		2010 Average	
Average Issued Speed	27	28	25	29	27	27	29	29	23	26	26	31	13,569		13,409	
Average Issued Red	0.8	1.3	1.4	3.0	2.7	3.1	4.0	1.5	4.1	2.7	2.2	1.5	27		28	
Citation / Violation Issuance	73%	55%	71%	69%	41%	61%	55%	55%	53%	53%	50%	64%	2		3.1	
Controllable Issuance Rate	100%	100%	100%	90%	88%	92%	100%	100%	90%	80%	90%	90%	58%		55%	
													93%		80%	



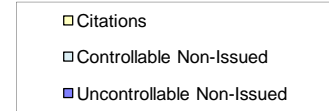
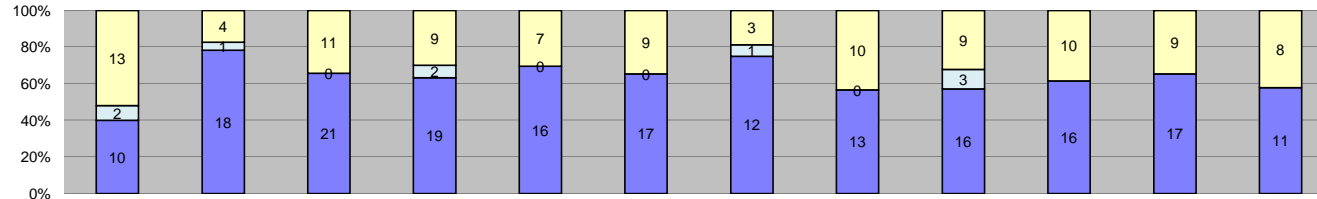
Events	Jan-11	Feb-11	Mar-11	Apr-11	May-11	Jun-11	Jul-11	Aug-11	Sep-11	Oct-11	Nov-11	Dec-11	Year to Date Average		2010 Average	
	Quantity	Quantity	Quantity	Quantity	Quantity	Quantity	Quantity	Quantity	Quantity	Quantity	Quantity	Quantity	Quantity	%	%	%
Non-Violations	1	3	4	3	3	5	1	2	2	4	6	3	3	10%	6	14%
Violations	27	25	38	31	27	27	28	27	26	27	25	31	28	90%	39	86%
Total:	28	28	42	34	30	32	29	29	28	31	31	34	31	100%	46	100%
Violations																
Uncontrollable Non-Issued	7	13	15	13	19	11	12	11	10	7	10	12	12	41%	12	30%
Controllable Non-Issued	0	1	0	0	1	2	2	0	0	0	0	0	1	2%	3	7%
Citations	20	11	23	18	7	14	14	16	16	20	15	19	16	57%	25	63%
Total:	27	25	38	31	27	27	28	27	26	27	25	31	28	100%	39	100%
Non-Violations																
Rear Axle Violation	0	0	0	0	0	0	0	0	0	0	0	0	0	0%	0	3%
Emergency Vehicle	0	1	1	1	2	3	1	1	1	0	1	1	1	35%	1	18%
Right Turn	0	0	0	0	0	0	0	0	0	0	0	0	0	0%	0	0%
No Violation Occurred	1	2	3	2	1	2	0	1	1	4	5	2	2	65%	6	79%
Total:	1	3	4	3	3	5	1	2	2	4	6	3	3	100%	8	100%
Uncontrollable Non-Issued Violations																
No Plate	4	6	2	2	1	2	4	5	4	1	4	2	3	26%	4	41%
Out of State Plate	0	0	1	1	2	0	1	0	0	0	0	0	0	4%	0	2%
Glare on Plate	0	0	0	0	0	0	0	0	0	0	0	0	0	0%	0	0%
Illegible Plate	0	0	0	0	0	0	0	1	0	0	0	0	0	1%	0	1%
Plate Obstructed	0	0	1	1	0	1	0	0	0	0	0	0	0	2%	0	2%
Windshield Glare	0	3	5	5	3	3	1	0	3	1	4	0	2	20%	3	27%
Driver Obstructed	0	0	0	1	3	0	0	0	0	0	0	0	0	3%	0	3%
Car Obstructed	0	0	1	1	8	0	0	0	0	0	0	2	1	9%	0	1%
No DMV Match Found	3	2	4	1	2	2	4	4	1	2	0	3	2	20%	2	18%
LASD Expired	0	0	0	0	0	0	0	0	0	0	0	0	0	0%	0	4%
LASD Return	0	2	1	1	0	3	2	1	1	3	2	4	2	333%	0	9%
Other	0	0	0	0	0	0	0	0	1	0	0	1	0	1%	0	0%
Total:	7	13	15	13	19	11	12	11	10	7	10	12	12	100%	11	100%
Controllable Non-Issued Violations																
Framing of Plate	0	0	0	0	0	0	0	0	0	0	0	0	0	0%	0	0%
Focus / Clarity of Plate	0	0	0	0	0	0	0	0	0	0	0	0	0	0%	0	0%
Dark Interior	0	1	0	0	1	2	1	0	0	0	0	0	0	83%	0	13%
Framing of Driver	0	0	0	0	0	0	0	0	0	0	0	0	0	0%	0	0%
Focus / Clarity of Driver	0	0	0	0	0	0	0	0	0	0	0	0	0	0%	0	0%
Framing of Car	0	0	0	0	0	0	0	0	0	0	0	0	0	0%	0	0%
Data Error	0	0	0	0	0	0	0	0	0	0	0	0	0	0%	0	0%
Exposure	0	0	0	0	0	0	0	0	0	0	0	0	0	0%	0	0%
Equipment Malfunction	0	0	0	0	0	0	1	0	0	0	0	0	0	17%	2	84%
ACS Expired	0	0	0	0	0	0	0	0	0	0	0	0	0	0%	0	3%
Total:	0	1	0	0	1	2	2	0	0	0	0	0	1	100%	3	100%
Summary Metrics																
Daily Average Vehicle Passes	13,064	13,269	11,867	12,183	14,057	12,535	11,086	12,983	11,759	11,352	13,499	12,047	Year to Date Average		2010 Average	
Average Issued Speed	21	21	21	20	18	20	20	19	21	19	19	19	12,475		13,174	
Average Issued Red	11.7	7.3	7.2	5.8	3.6	9.7	5.7	10.7	7.9	6.5	10.3	7.1	8		7.6	
Citation / Violation Issuance	74%	44%	61%	58%	26%	52%	50%	59%	62%	74%	60%	61%	57%		63%	
Controllable Issuance Rate	100%	92%	100%	100%	88%	88%	88%	100%	100%	100%	100%	100%	96%		86%	



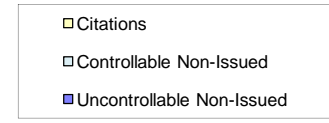
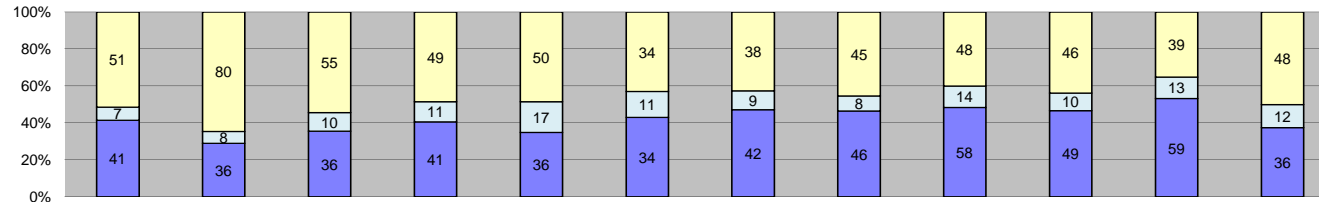
Events	Year to Date Average												2010 Average			
	Jan-11	Feb-11	Mar-11	Apr-11	May-11	Jun-11	Jul-11	Aug-11	Sep-11	Oct-11	Nov-11	Dec-11	Quantity	%	Quantity	%
Non-Violations	18	17	31	25	19	18	14	22	16	43	28	23	23	18%	21	17%
Violations	66	76	127	88	102	100	120	120	125	122	114	104	105	82%	101	83%
Total:	84	93	158	113	121	118	134	142	141	165	142	127	128	100%	122	100%
Violations																
Uncontrollable Non-Issued	11	14	40	19	40	31	41	47	43	31	29	31	31	30%	27	27%
Controllable Non-Issued	1	0	0	0	0	1	2	5	0	1	0	0	1	1%	4	3%
Citations	54	62	87	69	62	68	77	68	82	90	85	73	73	69%	71	70%
Total:	66	76	127	88	102	100	120	120	125	122	114	104	105	100%	101	100%
Non-Violations																
Rear Axle Violation	0	0	0	0	2	0	0	0	0	0	0	0	0	1%	0	0%
Emergency Vehicle	4	1	6	4	0	1	3	4	0	3	2	2	3	11%	4	16%
Right Turn	0	0	0	0	0	0	0	0	0	0	0	0	0	0%	0	0%
No Violation Occurred	14	16	25	21	17	17	11	18	16	40	26	21	20	88%	21	84%
Total:	18	17	31	25	19	18	14	22	16	43	28	23	23	100%	25	100%
Uncontrollable Non-Issued Violations																
No Plate	5	6	20	12	13	9	15	16	19	9	14	14	13	40%	12	7000%
Out of State Plate	1	1	2	0	2	1	2	0	1	1	4	1	1	4%	1	700%
Glare on Plate	0	0	0	0	0	0	0	0	0	0	0	0	0	0%	0	50%
Illegible Plate	0	0	0	0	1	0	0	0	0	1	0	1	0	1%	0	100%
Plate Obstructed	0	0	1	0	0	0	0	1	1	1	1	0	0	1%	0	250%
Windshield Glare	1	1	0	0	6	7	6	4	1	1	1	0	2	7%	2	1000%
Driver Obstructed	1	3	3	0	1	1	1	3	3	1	0	1	2	5%	2	950%
Car Obstructed	0	0	0	0	0	0	0	1	0	2	0	0	0	1%	0	250%
No DMV Match Found	3	3	11	5	11	6	5	6	8	6	7	5	6	20%	6	3450%
LASD Expired	0	0	0	0	0	0	0	0	0	0	0	0	0	0%	0	150%
LASD Return	0	0	3	2	6	7	12	16	9	9	2	8	6	740%	2	91%
Other	0	0	0	0	0	0	0	0	1	0	0	1	0	1%	0	50%
Total:	11	14	40	19	40	31	41	47	43	31	29	31	31	100%	0	100%
Controllable Non-Issued Violations																
Framing of Plate	0	0	0	0	0	0	0	0	0	0	0	0	0	0%	0	0%
Focus / Clarity of Plate	0	0	0	0	0	0	0	0	0	0	0	0	0	0%	0	0%
Dark Interior	0	0	0	0	0	0	2	3	0	1	0	0	1	60%	1	50%
Framing of Driver	0	0	0	0	0	0	0	0	0	0	0	0	0	0%	0	0%
Focus / Clarity of Driver	1	0	0	0	0	1	0	1	0	0	0	0	0	30%	0	5%
Framing of Car	0	0	0	0	0	0	0	0	0	0	0	0	0	0%	0	9%
Data Error	0	0	0	0	0	0	0	0	0	0	0	0	0	0%	0	0%
Exposure	0	0	0	0	0	0	0	0	0	0	0	0	0	0%	0	23%
Equipment Malfunction	0	0	0	0	0	0	0	1	0	0	0	0	0	10%	0	9%
ACS Expired	0	0	0	0	0	0	0	0	0	0	0	0	0	0%	0	5%
Total:	1	0	0	0	0	1	2	5	0	1	0	0	1	100%	2	100%
Summary Metrics																
Daily Average Vehicle Passes	11,358	11,386	11,939	11,248	11,927	11,595	10,420	11,984	11,092	8,278	11,737	10,432	Year to Date Average		2010 Average	
Average Issued Speed	33	32	34	34	33	35	33	34	35	34	33	35	11,116		11,380	
Average Issued Red	2.1	2.8	2.0	2.5	1.8	1.8	3.0	2.9	2.3	2.4	1.9	1.9	34		33	
Citation / Violation Issuance	82%	82%	69%	78%	61%	68%	64%	57%	66%	74%	75%	70%	2		2.5	
Controllable Issuance Rate	98%	100%	100%	100%	100%	99%	97%	93%	100%	99%	100%	100%	70%		70%	



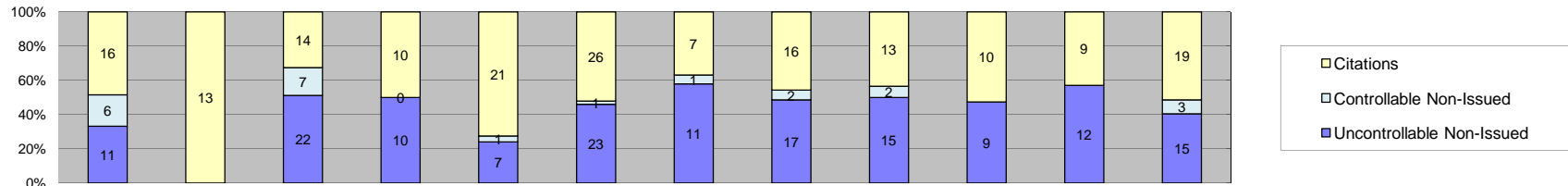
Events	Jan-11	Feb-11	Mar-11	Apr-11	May-11	Jun-11	Jul-11	Aug-11	Sep-11	Oct-11	Nov-11	Dec-11	Year to Date Average		2010 Average	
													Quantity	%	Quantity	%
Non-Violations	17	10	19	14	10	5	16	10	12	5	14	9	12	9%	124	54%
Violations	76	106	114	91	110	112	82	125	139	157	124	150	116	91%	106	46%
Total:	93	116	133	105	120	117	98	135	151	162	138	159	127	100%	229	100%
Violations																
Uncontrollable Non-Issued	29	42	52	27	42	56	48	58	67	76	67	66	53	45%	35	33%
Controllable Non-Issued	13	18	18	15	17	19	8	17	20	27	23	24	18	16%	18	17%
Citations	34	46	44	49	51	37	26	50	52	54	34	60	45	39%	53	50%
Total:	76	106	114	91	110	112	82	125	139	157	124	150	116	100%	106	100%
Non-Violations																
Rear Axle Violation	0	0	0	0	0	0	0	0	0	0	0	0	0	0%	0	0%
Emergency Vehicle	0	0	6	4	2	4	5	2	1	1	3	1	2	21%	3	2%
Right Turn	0	0	0	0	0	0	0	0	0	0	0	0	0	0%	0	0%
No Violation Occurred	17	10	13	10	8	1	11	8	11	4	11	8	9	79%	124	98%
Total:	17	10	19	14	10	5	16	10	12	5	14	9	12	100%	126	100%
Uncontrollable Non-Issued Violations																
No Plate	7	14	15	5	6	16	15	16	23	21	13	15	14	26%	13	37%
Out of State Plate	0	2	1	1	1	1	3	1	1	1	3	1	1	3%	1	4%
Glare on Plate	4	6	5	4	1	4	2	9	5	12	6	6	5	10%	1	1%
Illegible Plate	0	1	6	0	1	2	3	2	1	2	3	7	2	4%	1	3%
Plate Obstructed	0	1	1	0	2	2	2	0	0	0	0	1	1	1%	1	2%
Windshield Glare	2	3	7	5	13	15	8	6	5	4	6	6	7	13%	7	20%
Driver Obstructed	2	1	2	2	1	0	1	5	2	1	2	1	2	3%	1	2%
Car Obstructed	1	1	0	0	0	0	0	0	0	1	0	0	0	0%	1	3%
No DMV Match Found	8	5	5	5	9	5	3	7	11	4	10	4	6	12%	6	16%
LASD Expired	0	0	0	0	0	0	0	0	0	2	0	0	0	0%	1	2%
LASD Return	5	8	10	4	8	11	11	12	19	26	24	24	14	74%	4	28%
Other	0	0	0	1	0	0	0	0	0	2	0	1	0	1%	0	0%
Total:	29	42	52	27	42	56	48	58	67	76	67	66	53	100%	36	100%
Controllable Non-Issued Violations																
Framing of Plate	1	4	2	4	2	3	3	5	4	14	5	7	5	25%	2	12%
Focus / Clarity of Plate	2	2	2	2	1	3	0	2	1	1	1	1	2	8%	1	6%
Dark Interior	9	9	11	4	8	12	4	6	12	7	10	10	9	47%	8	55%
Framing of Driver	0	0	2	2	2	0	0	0	1	3	5	5	2	9%	0	2%
Focus / Clarity of Driver	0	2	0	2	2	1	1	1	1	1	0	0	1	5%	1	8%
Framing of Car	1	1	1	1	2	0	0	2	1	0	2	1	1	5%	2	12%
Data Error	0	0	0	0	0	0	0	0	0	0	0	0	0	0%	0	1%
Exposure	0	0	0	0	0	0	0	0	0	0	0	0	0	0%	0	1%
Equipment Malfunction	0	0	0	0	0	0	0	1	0	0	0	0	0	0%	1	4%
ACS Expired	0	0	0	0	0	0	0	0	0	1	0	0	0	0%	0	0%
Total:	13	18	18	15	17	19	8	17	20	27	23	24	18	100%	14	100%
Summary Metrics																
Daily Average Vehicle Passes	6,338	7,439	7,838	7,240	7,458	7,348	6,407	7,447	7,459	7,336	6,549	6,712	Year to Date Average		2010 Average	
Average Issued Speed	31	35	33	35	37	36	36	36	34	34	34	37	7,131		7,888	
Average Issued Red	2.3	0.9	1.9	0.5	0.5	1.3	1.1	0.6	1.0	0.9	0.5	0.6	1		1.4	
Citation / Violation Issuance	45%	43%	39%	54%	46%	33%	32%	40%	37%	34%	27%	40%	39%		50%	
Controllable Issuance Rate	72%	72%	71%	77%	75%	66%	76%	75%	72%	67%	60%	71%	71%		75%	



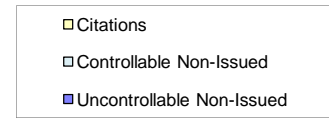
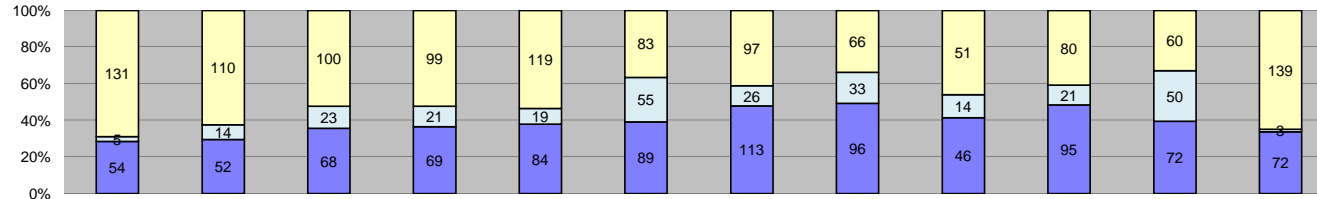
Events	Jan-11	Feb-11	Mar-11	Apr-11	May-11	Jun-11	Jul-11	Aug-11	Sep-11	Oct-11	Nov-11	Dec-11	Year to Date Average		2010 Average		
	Quantity	Quantity	Quantity	Quantity	Quantity	Quantity	Quantity	Quantity	Quantity	Quantity	Quantity	Quantity	Quantity	Quantity	%	Quantity	%
Non-Violations	2,775	2,779	3,122	2,992	3,129	3,084	2,616	2,000	2,121	2,174	1,859	1,892	2,545	99%	1,850	99%	
Violations	25	23	32	30	23	26	16	23	28	26	26	19	25	1%	23	1%	
Total:	2,800	2,802	3,154	3,022	3,152	3,110	2,632	2,023	2,149	2,200	1,885	1,911	2,570	100%	1,873	100%	
Violations																	
Uncontrollable Non-Issued	10	18	21	19	16	17	12	13	16	16	17	11	16	63%	12	49%	
Controllable Non-Issued	2	1	0	2	0	0	1	0	3	0	0	0	1	3%	1	5%	
Citations	13	4	11	9	7	9	3	10	9	10	9	8	9	34%	11	45%	
Total:	25	23	32	30	23	26	16	23	28	26	26	19	25	100%	23	100%	
Non-Violations																	
Rear Axle Violation	0	0	0	0	0	0	0	0	0	0	0	0	0	0%	0	0%	
Emergency Vehicle	0	0	0	0	0	1	0	0	0	0	0	0	0	0%	0	0%	
Right Turn	0	0	0	0	0	0	0	0	0	0	0	0	0	0%	2	0%	
No Violation Occurred	2,775	2,779	3,122	2,992	3,129	3,083	2,616	2,000	2,121	2,174	1,859	1,892	2,545	100%	1,848	100%	
Total:	2,775	2,779	3,122	2,992	3,129	3,084	2,616	2,000	2,121	2,174	1,859	1,892	2,545	100%	1,850	100%	
Uncontrollable Non-Issued Violations																	
No Plate	6	5	8	3	3	6	2	1	7	6	5	2	5	29%	4	76%	
Out of State Plate	0	0	0	1	0	0	1	0	0	1	1	1	0	3%	0	67%	
Glare on Plate	0	0	0	1	0	0	0	0	0	0	0	0	0	1%	0	17%	
Illegible Plate	0	1	0	0	1	0	0	0	1	1	0	0	0	2%	0	33%	
Plate Obstructed	0	0	0	0	0	0	0	0	0	0	1	0	0	1%	0	50%	
Windshield Glare	0	1	1	4	2	1	0	3	1	0	2	0	1	8%	2	300%	
Driver Obstructed	0	0	0	2	0	0	0	0	1	1	2	0	1	3%	1	233%	
Car Obstructed	2	6	9	5	7	4	3	1	2	2	3	0	4	24%	2	350%	
No DMV Match Found	2	2	2	1	1	4	0	1	1	1	0	0	1	8%	1	217%	
LASD Expired	0	0	0	0	0	0	0	0	0	0	0	0	0	0%	0	33%	
LASD Return	0	3	1	3	2	2	6	7	3	4	3	0	3	378%	0	36%	
Other	0	0	0	0	0	0	0	0	0	0	0	8	1	4%	1	167%	
Total:	10	18	21	19	16	17	12	13	16	16	17	11	16	100%	1	100%	
Controllable Non-Issued Violations																	
Framing of Plate	0	0	0	0	0	0	0	0	0	0	0	0	0	0%	0	0%	
Focus / Clarity of Plate	0	0	0	0	0	0	0	0	0	0	0	0	0	0%	0	0%	
Dark Interior	1	1	0	0	0	0	1	0	3	0	0	0	1	67%	0	27%	
Framing of Driver	0	0	0	0	0	0	0	0	0	0	0	0	0	0%	0	0%	
Focus / Clarity of Driver	0	0	0	0	0	0	0	0	0	0	0	0	0	0%	0	0%	
Framing of Car	0	0	0	0	0	0	0	0	0	0	0	0	0	0%	0	18%	
Data Error	0	0	0	0	0	0	0	0	0	0	0	0	0	0%	0	18%	
Exposure	1	0	0	2	0	0	0	0	0	0	0	0	0	33%	0	27%	
Equipment Malfunction	0	0	0	0	0	0	0	0	0	0	0	0	0	0%	0	9%	
ACS Expired	0	0	0	0	0	0	0	0	0	0	0	0	0	0%	0	0%	
Total:	2	1	0	2	0	0	1	0	3	0	0	0	1	100%	1	100%	
Summary Metrics																	
Daily Average Vehicle Passes	449	483	510	469	567	479	393	600	472	473	464	427	Year to Date Average		2010 Average		
Average Issued Speed	16	18	18	15	18	16	19	16	17	18	17	16	482		491		
Average Issued Red	60.7	24.5	53.2	56.1	46.7	58.4	64.9	53.7	40.8	41.6	59.4	67.3	52		48.6		
Citation / Violation Issuance	52%	17%	34%	30%	30%	35%	19%	43%	32%	38%	35%	42%	34%		45%		
Controllable Issuance Rate	87%	80%	100%	82%	100%	100%	75%	100%	75%	100%	100%	100%	92%		46%		



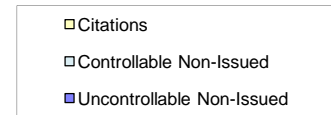
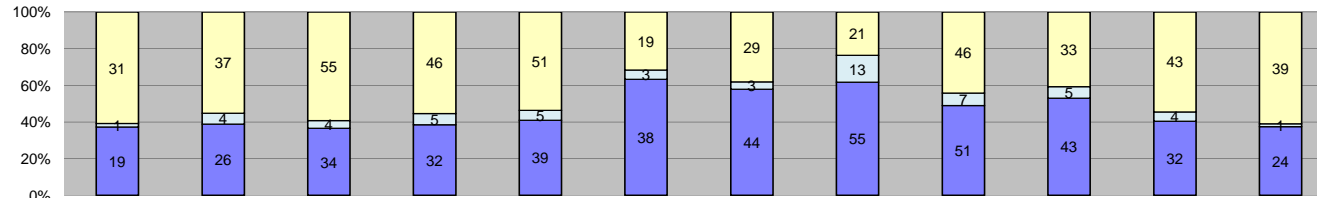
Events	Jan-11	Feb-11	Mar-11	Apr-11	May-11	Jun-11	Jul-11	Aug-11	Sep-11	Oct-11	Nov-11	Dec-11	Year to Date Average		2010 Average	
	Quantity	Quantity	Quantity	Quantity	Quantity	Quantity	Quantity	Quantity	Quantity	Quantity	Quantity	Quantity	Quantity	%	%	%
Events																
Non-Violations	26	31	21	23	27	21	19	19	24	16	24	25	23	18%	17	16%
Violations	99	124	101	101	103	79	89	99	120	105	111	96	102	82%	88	84%
Total:	125	155	122	124	130	100	108	118	144	121	135	121	125	100%	105	100%
Violations																
Uncontrollable Non-Issued	41	36	36	41	36	34	42	46	58	49	59	36	43	42%	32	36%
Controllable Non-Issued	7	8	10	11	17	11	9	8	14	10	13	12	11	11%	5	6%
Citations	51	80	55	49	50	34	38	45	48	46	39	48	49	48%	51	58%
Total:	99	124	101	101	103	79	89	99	120	105	111	96	102	100%	88	100%
Non-Violations																
Rear Axle Violation	0	0	1	0	0	0	0	0	0	0	2	1	0	1%	0	0%
Emergency Vehicle	5	1	1	2	5	4	5	2	9	4	5	4	4	17%	4	17%
Right Turn	0	0	0	0	0	0	0	0	0	0	0	0	0	0%	0	0%
No Violation Occurred	21	30	19	21	22	17	14	17	15	12	17	20	19	82%	17	82%
Total:	26	31	21	23	27	21	19	19	24	16	24	25	23	100%	21	100%
Uncontrollable Non-Issued Violations																
No Plate	12	10	11	8	11	9	8	6	10	7	13	10	10	22%	10	34%
Out of State Plate	1	0	3	1	1	2	0	1	1	1	3	0	1	3%	1	5%
Glare on Plate	0	1	0	0	0	0	0	0	0	0	0	0	0	0%	0	1%
Illegible Plate	0	0	0	0	1	0	0	0	0	0	0	1	0	0%	0	0%
Plate Obstructed	0	0	3	1	0	1	1	0	3	3	3	0	1	3%	0	1%
Windshield Glare	5	7	6	19	13	14	13	17	19	6	11	5	11	26%	6	21%
Driver Obstructed	1	3	2	0	0	1	1	0	0	0	0	0	1	2%	1	5%
Car Obstructed	3	2	3	3	2	1	2	3	3	3	6	1	3	6%	2	5%
No DMV Match Found	15	5	5	8	3	0	6	8	3	11	11	4	7	15%	7	24%
LASD Expired	0	0	0	0	0	0	0	0	1	0	0	0	0	0%	1	2%
LASD Return	4	7	3	1	5	6	11	11	18	18	12	15	9	85%	1	28%
Other	0	1	0	0	0	0	0	0	0	0	0	0	0	0%	0	0%
Total:	41	36	36	41	36	34	42	46	58	49	59	36	43	100%	29	100%
Controllable Non-Issued Violations																
Framing of Plate	0	0	0	0	0	1	0	0	0	1	0	0	0	2%	1	24%
Focus / Clarity of Plate	0	0	0	0	0	0	0	1	0	1	0	0	0	2%	0	4%
Dark Interior	6	3	2	11	13	7	8	5	11	4	6	7	7	64%	1	22%
Framing of Driver	0	0	0	0	0	0	0	2	1	4	4	5	1	12%	0	10%
Focus / Clarity of Driver	0	1	0	0	0	0	0	0	1	0	0	0	0	2%	1	12%
Framing of Car	0	0	0	0	1	0	0	0	1	0	3	0	0	4%	1	14%
Data Error	0	0	0	0	0	0	0	0	0	0	0	0	0	0%	0	0%
Exposure	0	4	0	0	0	0	0	0	0	0	0	0	0	3%	0	10%
Equipment Malfunction	1	0	7	0	3	3	1	0	0	0	0	0	1	12%	0	2%
ACS Expired	0	0	1	0	0	0	0	0	0	0	0	0	0	1%	0	2%
Total:	7	8	10	11	17	11	9	8	14	10	13	12	11	100%	4	100%
Summary Metrics																
Daily Average Vehicle Passes	16,155	16,267	15,091	15,137	16,649	12,966	12,917	14,831	13,957	11,930	16,694	12,882	Year to Date Average		2010 Average	
Average Issued Speed	19	21	22	21	21	21	19	20	20	21	21	21	21		21	
Average Issued Red	2.5	4.0	2.1	2.1	3.0	2.5	2.9	3.0	2.8	2.3	2.2	1.7	3		2.5	
Citation / Violation Issuance	52%	65%	54%	49%	49%	43%	43%	45%	40%	44%	35%	50%	47%		58%	
Controllable Issuance Rate	88%	91%	85%	82%	75%	76%	81%	85%	77%	82%	75%	80%	81%		87%	



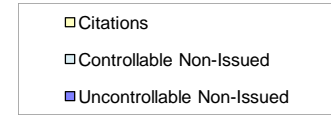
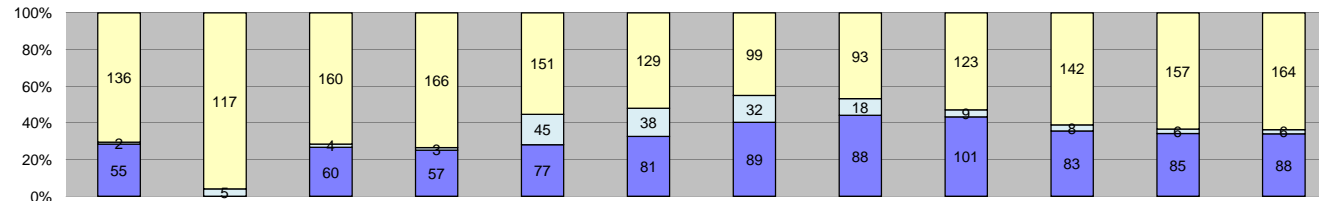
Events	Jan-11	Feb-11	Mar-11	Apr-11	May-11	Jun-11	Jul-11	Aug-11	Sep-11	Oct-11	Nov-11	Dec-11	Year to Date Average		2010 Average	
													Quantity	%	Quantity	%
Non-Violations	13	12	40	20	15	23	12	9	19	17	13	13	17	37%	12	29%
Violations	33	13	43	20	29	50	19	35	30	19	21	37	29	63%	29	71%
Total:	46	25	83	40	44	73	31	44	49	36	34	50	46	100%	41	100%
Violations																
Uncontrollable Non-Issued	11	0	22	10	7	23	11	17	15	9	12	15	13	44%	12	41%
Controllable Non-Issued	6	0	7	0	1	1	1	2	2	0	0	3	2	7%	1	3%
Citations	16	13	14	10	21	26	7	16	13	10	9	19	15	50%	16	55%
Total:	33	13	43	20	29	50	19	35	30	19	21	37	29	100%	29	100%
Non-Violations																
Rear Axle Violation	0	0	0	0	0	0	0	0	0	0	0	0	0	0%	0	0%
Emergency Vehicle	4	3	11	4	1	5	1	1	4	0	5	2	3	20%	2	14%
Right Turn	0	0	0	0	0	0	0	0	0	0	0	0	0	0%	0	0%
No Violation Occurred	9	9	29	16	14	18	11	8	15	17	8	11	14	80%	12	86%
Total:	13	12	40	20	15	23	12	9	19	17	13	13	17	100%	14	100%
Uncontrollable Non-Issued Violations																
No Plate	1	2	7	4	2	2	4	5	3	5	5	6	4	29%	4	40%
Out of State Plate	2	0	2	1	0	0	0	0	1	0	0	0	1	4%	1	10%
Glare on Plate	1	0	1	0	0	1	0	0	0	0	0	0	0	2%	0	0%
Illegible Plate	0	0	0	0	0	1	0	0	0	0	0	0	0	1%	0	0%
Plate Obstructed	0	0	1	0	0	0	0	0	1	0	1	0	0	2%	0	0%
Windshield Glare	1	0	1	1	2	5	0	1	0	1	0	1	1	8%	1	10%
Driver Obstructed	0	1	1	0	0	0	0	0	0	0	0	0	0	1%	0	0%
Car Obstructed	3	1	4	0	2	4	3	3	5	0	4	1	3	19%	2	20%
No DMV Match Found	1	1	3	2	1	5	2	3	1	2	0	2	2	15%	2	20%
LASD Expired	0	0	0	0	0	0	0	0	0	0	0	0	0	0%	0	0%
LASD Return	2	0	2	2	0	5	2	5	4	1	2	4	2	126%	0	0%
Other	0	0	0	0	0	0	0	0	0	0	0	1	0	1%	0	0%
Total:	11	0	22	10	7	23	11	17	15	9	12	15	13	100%	10	100%
Controllable Non-Issued Violations																
Framing of Plate	0	0	0	0	0	0	0	0	0	0	0	0	0	0%	0	0%
Focus / Clarity of Plate	1	0	1	0	0	0	0	0	0	0	0	0	0	9%	0	0%
Dark Interior	1	0	2	0	1	0	0	2	1	0	0	3	1	43%	1	100%
Framing of Driver	0	0	0	0	0	0	0	0	0	0	0	0	0	0%	0	0%
Focus / Clarity of Driver	0	0	0	0	0	0	0	0	0	0	0	0	0	0%	0	0%
Framing of Car	0	0	0	0	0	0	0	0	0	0	0	0	0	0%	0	0%
Data Error	4	0	4	0	0	0	0	0	0	0	0	0	1	35%	0	0%
Exposure	0	0	0	0	0	0	0	0	0	0	0	0	0	0%	0	0%
Equipment Malfunction	0	0	0	0	0	0	1	0	1	0	0	0	0	9%	0	0%
ACS Expired	0	0	0	0	0	1	0	0	0	0	0	0	0	4%	0	0%
Total:	6	0	7	0	1	1	1	2	2	0	0	3	2	100%	1	100%
Summary Metrics																
Daily Average Vehicle Passes	15,945	14,461	44,821	15,141	16,424	15,907	12,561	13,613	15,138	15,255	15,976	14,138	Year to Date Average		2010 Average	
Average Issued Speed	19	19	19	19	18	18	18	19	18	20	19	19	17,448		15,515	
Average Issued Red	16.7	14.9	15.8	18.8	18.0	19.8	19.1	17.4	16.1	15.8	18.3	16.4	17		16.3	
Citation / Violation Issuance	48%	100%	33%	50%	72%	52%	37%	46%	43%	53%	43%	51%	52%		55%	
Controllable Issuance Rate	73%	100%	67%	100%	95%	96%	88%	89%	87%	100%	100%	86%	90%		84%	



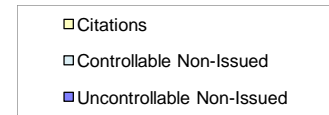
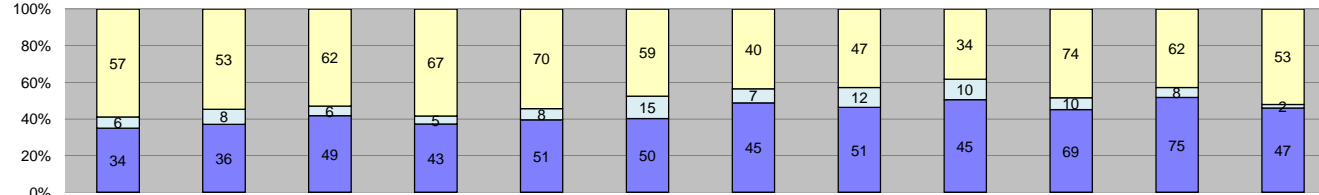
Events	Year to Date Average												2010 Average			
	Jan-11	Feb-11	Mar-11	Apr-11	May-11	Jun-11	Jul-11	Aug-11	Sep-11	Oct-11	Nov-11	Dec-11	Quantity	%	Quantity	%
Non-Violations	127	88	105	99	120	125	125	113	71	91	113	120	108	36%	115	38%
Violations	190	176	191	189	222	227	236	195	111	196	182	214	194	64%	186	62%
Total:	317	264	296	288	342	352	361	308	182	287	295	334	302	100%	300	100%
Violations																
Uncontrollable Non-Issued	54	52	68	69	84	89	113	96	46	95	72	72	76	39%	42	23%
Controllable Non-Issued	5	14	23	21	19	55	26	33	14	21	50	3	24	12%	11	6%
Citations	131	110	100	99	119	83	97	66	51	80	60	139	95	49%	132	71%
Total:	190	176	191	189	222	227	236	195	111	196	182	214	194	100%	186	100%
Non-Violations																
Rear Axle Violation	0	0	0	0	0	0	0	0	0	0	1	0	0	0%	0	0%
Emergency Vehicle	6	4	2	1	3	2	6	3	1	1	2	3	3	3%	3	2%
Right Turn	0	0	0	0	0	0	0	0	0	0	0	0	0	0%	0	0%
No Violation Occurred	121	84	103	98	117	123	119	110	70	90	110	117	105	97%	115	98%
Total:	127	88	105	99	120	125	125	113	71	91	113	120	108	100%	118	100%
Uncontrollable Non-Issued Violations																
No Plate	3	5	11	13	7	7	13	12	6	7	9	9	9	11%	8	18%
Out of State Plate	9	2	2	3	6	4	3	4	2	7	3	3	4	5%	4	8%
Glare on Plate	0	1	0	1	0	0	0	0	0	0	0	0	0	0%	1	1%
Illegible Plate	0	2	0	0	0	1	2	1	0	0	1	1	1	1%	1	1%
Plate Obstructed	0	1	0	0	0	0	0	1	0	0	1	1	0	0%	0	1%
Windshield Glare	1	5	11	9	21	23	20	11	3	14	8	2	11	14%	7	17%
Driver Obstructed	22	23	22	10	17	19	22	10	12	17	12	9	16	21%	9	21%
Car Obstructed	0	0	0	0	0	0	0	1	0	1	0	0	0	0%	0	1%
No DMV Match Found	12	7	8	7	7	8	6	12	5	11	6	6	8	10%	10	23%
LASD Expired	0	0	0	0	0	0	0	0	0	0	0	1	0	0%	0	1%
LASD Return	7	6	14	26	26	27	47	44	18	38	33	36	27	113%	4	55%
Other	0	0	0	0	0	0	0	0	0	0	0	4	0	0%	0	0%
Total:	54	52	68	69	84	89	113	96	46	95	72	72	76	100%	43	100%
Controllable Non-Issued Violations																
Framing of Plate	0	0	0	1	0	0	0	0	0	0	0	0	0	0%	0	0%
Focus / Clarity of Plate	0	0	0	1	0	1	0	0	0	1	1	0	0	1%	0	0%
Dark Interior	4	8	23	18	17	26	25	31	13	20	33	1	18	77%	6	88%
Framing of Driver	0	0	0	0	0	0	0	0	1	0	0	0	0	0%	0	0%
Focus / Clarity of Driver	1	5	0	1	2	1	1	1	0	0	15	1	2	10%	1	8%
Framing of Car	0	0	0	0	0	0	0	0	0	0	0	0	0	0%	0	0%
Data Error	0	1	0	0	0	0	0	0	0	0	0	0	0	0%	0	0%
Exposure	0	0	0	0	0	0	0	0	0	0	0	1	0	0%	0	0%
Equipment Malfunction	0	0	0	0	0	27	0	1	0	0	1	0	2	10%	0	5%
ACS Expired	0	0	0	0	0	0	0	0	0	0	0	0	0	0%	0	0%
Total:	5	14	23	21	19	55	26	33	14	21	50	3	24	100%	7	100%
Summary Metrics																
Daily Average Vehicle Passes	2,640	3,373	3,690	3,983	3,628	3,078	2,715	2,705	3,197	3,342	2,728	2,932	Year to Date Average		2010 Average	
Average Issued Speed	20	20	20	20	20	20	20	20	20	20	21	20	3,168		3,458	
Average Issued Red	36.0	26.6	28.6	27.6	29.9	24.7	28.8	29.0	27.1	28.5	21.0	33.3	20		20	
Citation / Violation Issuance	69%	63%	52%	52%	54%	37%	41%	34%	46%	41%	33%	65%	28		29.9	
Controllable Issuance Rate	96%	89%	81%	83%	86%	60%	79%	67%	78%	79%	55%	98%	49%		71%	
													79%		93%	



Events	Jan-11	Feb-11	Mar-11	Apr-11	May-11	Jun-11	Jul-11	Aug-11	Sep-11	Oct-11	Nov-11	Dec-11	Year to Date Average		2010 Average	
													Quantity	%	Quantity	%
Non-Violations	1,365	1,456	1,708	1,617	1,657	1,583	1,293	940	966	944	884	774	1,266	94%	1,002	91%
Violations	51	67	93	83	95	60	76	89	104	81	79	64	79	6%	99	9%
Total:	1,416	1,523	1,801	1,700	1,752	1,643	1,369	1,029	1,070	1,025	963	838	1,344	100%	1,101	100%
Violations																
Uncontrollable Non-Issued	19	26	34	32	39	38	44	55	51	43	32	24	36	46%	55	55%
Controllable Non-Issued	1	4	4	5	5	3	3	13	7	5	4	1	5	6%	18	18%
Citations	31	37	55	46	51	19	29	21	46	33	43	39	38	48%	27	27%
Total:	51	67	93	83	95	60	76	89	104	81	79	64	79	100%	99	100%
Non-Violations																
Rear Axle Violation	0	3	1	2	1	1	1	5	6	2	2	6	3	0%	5	1%
Emergency Vehicle	0	1	0	1	1	1	0	1	4	0	1	1	1	0%	0	0%
Right Turn	0	0	0	0	0	0	0	0	0	0	0	0	0	0%	0	0%
No Violation Occurred	1,365	1,452	1,707	1,614	1,655	1,581	1,292	934	956	942	881	767	1,262	100%	997	99%
Total:	1,365	1,456	1,708	1,617	1,657	1,583	1,293	940	966	944	884	774	1,266	100%	1,002	100%
Uncontrollable Non-Issued Violations																
No Plate	7	11	9	7	10	12	11	11	15	13	3	6	10	26%	8	13%
Out of State Plate	1	2	2	1	1	1	4	0	1	1	0	0	1	3%	1	1%
Glare on Plate	0	0	0	0	0	0	0	0	0	0	0	0	0	0%	0	0%
Illegible Plate	0	0	0	1	0	1	0	0	0	0	0	0	0	0%	0	0%
Plate Obstructed	0	0	0	0	0	0	0	0	2	0	0	0	0	0%	1	1%
Windshield Glare	1	3	6	11	14	13	15	10	12	6	9	1	8	23%	4	7%
Driver Obstructed	1	0	2	1	1	3	4	2	2	2	5	0	2	5%	2	3%
Car Obstructed	2	3	4	0	2	0	2	2	0	1	2	1	2	4%	1	2%
No DMV Match Found	4	4	6	3	5	2	4	8	7	4	5	0	4	12%	3	5%
LASD Expired	0	0	0	0	0	0	0	0	0	0	1	0	0	0%	1	1%
LASD Return	3	3	2	8	6	6	4	22	12	16	7	10	8	180%	2	11%
Other	0	0	3	0	0	0	0	0	0	0	0	6	1	2%	35	62%
Total:	19	26	34	32	39	38	44	55	51	43	32	24	36	100%	56	100%
Controllable Non-Issued Violations																
Framing of Plate	0	0	0	0	0	0	0	1	0	0	0	0	0	2%	0	1%
Focus / Clarity of Plate	0	0	0	0	0	0	0	0	0	0	0	0	0	0%	0	1%
Dark Interior	1	3	4	5	4	2	3	12	6	5	1	1	4	85%	1	7%
Framing of Driver	0	0	0	0	0	0	0	0	0	0	0	0	0	0%	0	0%
Focus / Clarity of Driver	0	0	0	0	0	0	0	0	0	0	0	0	0	0%	0	2%
Framing of Car	0	1	0	0	1	0	0	0	1	0	1	0	0	7%	1	4%
Data Error	0	0	0	0	0	0	0	0	0	0	0	0	0	0%	1	5%
Exposure	0	0	0	0	0	1	0	0	0	0	2	0	0	5%	13	81%
Equipment Malfunction	0	0	0	0	0	0	0	0	0	0	0	0	0	0%	0	0%
ACS Expired	0	0	0	0	0	0	0	0	0	0	0	0	0	0%	0	0%
Total:	1	4	4	5	5	3	3	13	7	5	4	1	5	100%	16	100%
Summary Metrics																
Daily Average Vehicle Passes	1,644	1,847	1,847	1,685	1,827	1,698	1,478	1,642	1,798	1,681	1,698	1,375	Year to Date Average		2010 Average	
Average Issued Speed	17	17	17	16	18	18	17	16	16	18	17	18	1,685		1,574	
Average Issued Red	15.7	12.7	10.8	11.8	11.6	12.6	10.7	9.5	13.3	14.4	12.0	13.5	12		14.2	
Citation / Violation Issuance	61%	55%	59%	55%	54%	32%	38%	24%	44%	41%	54%	61%	48%		27%	
Controllable Issuance Rate	97%	90%	93%	90%	91%	86%	91%	62%	87%	87%	91%	98%	89%		63%	



Events	Jan-11	Feb-11	Mar-11	Apr-11	May-11	Jun-11	Jul-11	Aug-11	Sep-11	Oct-11	Nov-11	Dec-11	Year to Date Average		2010 Average	
													Quantity	%	Quantity	%
Non-Violations	47	38	73	58	55	58	46	50	24	43	57	42	49	18%		0
Violations	193	122	224	226	273	248	220	199	233	233	248	258	223	82%		0
Total:	240	160	297	284	328	306	266	249	257	276	305	300	272	100%	0	100%
Violations																
Uncontrollable Non-Issued	55	0	60	57	77	81	89	88	101	83	85	88	72	32%		0
Controllable Non-Issued	2	5	4	3	45	38	32	18	9	8	6	6	15	7%		0
Citations	136	117	160	166	151	129	99	93	123	142	157	164	136	61%		0
Total:	193	122	224	226	273	248	220	199	233	233	248	258	223	100%	0	100%
Non-Violations																
Rear Axle Violation	0	1	2	1	1	0	2	2	0	0	0	2	1	2%		0
Emergency Vehicle	15	12	17	17	19	21	15	16	3	14	15	15	15	30%		0
Right Turn	0	0	0	0	0	0	0	0	0	0	0	1	0	0%		0
No Violation Occurred	32	25	54	40	35	37	29	32	21	29	42	24	33	68%		0
Total:	47	38	73	58	55	58	46	50	24	43	57	42	49	100%	0	100%
Uncontrollable Non-Issued Violations																
No Plate	10	11	13	11	10	6	8	2	7	13	5	8	9	11%		0
Out of State Plate	6	7	8	10	8	6	3	4	5	6	7	3	6	8%		0
Glare on Plate	2	0	0	0	0	1	2	2	0	1	0	0	1	1%		0
Illegible Plate	0	1	2	0	0	1	0	1	1	1	1	1	1	1%		0
Plate Obstructed	0	1	0	0	0	0	0	0	2	0	0	0	0	0%		0
Windshield Glare	1	3	4	4	22	19	21	11	6	3	3	3	8	11%		0
Driver Obstructed	8	8	12	1	2	8	5	7	6	6	5	7	6	8%		0
Car Obstructed	2	1	1	0	2	0	1	0	1	0	0	1	1	1%		0
No DMV Match Found	23	7	15	19	20	13	25	11	26	19	34	18	19	25%		0
LASD Expired	0	0	0	0	0	0	0	0	1	0	0	0	0	0%		0
LASD Return	3	8	4	12	13	27	24	50	39	33	30	47	24	165%		0
Other	0	0	1	0	0	0	0	0	7	1	0	0	1	1%		0
Total:	55	0	60	57	77	81	89	88	101	83	85	88	76	100%	0	100%
Controllable Non-Issued Violations																
Framing of Plate	0	0	0	0	0	0	0	0	0	0	0	0	0	0%		0
Focus / Clarity of Plate	1	0	0	0	0	0	0	0	0	0	0	0	0	1%		0
Dark Interior	1	2	2	2	22	20	10	17	7	7	3	3	8	55%		0
Framing of Driver	0	0	0	0	0	0	0	0	0	0	0	0	0	0%		0
Focus / Clarity of Driver	0	0	0	0	0	1	4	1	1	1	2	3	1	7%		0
Framing of Car	0	0	0	0	0	0	0	0	1	0	0	0	0	1%		0
Data Error	0	0	0	0	0	1	0	0	0	0	0	0	0	1%		0
Exposure	0	3	1	1	0	0	1	0	0	0	1	0	1	4%		0
Equipment Malfunction	0	0	0	0	23	16	17	0	0	0	0	0	5	32%		0
ACS Expired	0	0	1	0	0	0	0	0	0	0	0	0	0	1%		0
Total:	2	5	4	3	45	38	32	18	9	8	6	6	15	100%	0	100%
Summary Metrics																
Daily Average Vehicle Passes	13,783	13,777	13,800	13,120	14,722	14,038	11,784	12,432	12,564	13,222	14,242	12,226	Year to Date Average		2010 Average	
Average Issued Speed	24	24	25	22	24	22	24	24	23	26	24	24	13,309		24	
Average Issued Red	9.9	8.6	9.7	11.0	8.0	10.2	7.0	9.4	5.8	5.3	5.5	6.5	8		8	
Citation / Violation Issuance	70%	96%	71%	73%	55%	52%	45%	47%	53%	61%	63%	64%	63%		63%	
Controllable Issuance Rate	99%	96%	98%	98%	77%	77%	76%	84%	93%	95%	96%	96%	90%		90%	



Events	Jan-11	Feb-11	Mar-11	Apr-11	May-11	Jun-11	Jul-11	Aug-11	Sep-11	Oct-11	Nov-11	Dec-11	Year to Date Average		2010 Average	
													Quantity	%	Quantity	%
Non-Violations	620	652	618	588	505	519	361	305	205	428	364	328	458	80%	554	75%
Violations	97	97	117	115	129	124	92	110	89	153	145	102	114	20%	181	25%
Total:	717	749	735	703	634	643	453	415	294	581	509	430	572	100%	735	100%
Violations																
Uncontrollable Non-Issued	34	36	49	43	51	50	45	51	45	69	75	47	50	43%	93	51%
Controllable Non-Issued	6	8	6	5	8	15	7	12	10	10	8	2	8	7%	41	23%
Citations	57	53	62	67	70	59	40	47	34	74	62	53	57	49%	46	26%
Total:	97	97	117	115	129	124	92	110	89	153	145	102	114	100%	181	100%
Non-Violations																
Rear Axle Violation	10	2	4	3	5	2	5	3	2	1	5	13	5	1%	9	2%
Emergency Vehicle	2	2	1	1	0	1	1	0	1	0	0	1	1	0%	1	0%
Right Turn	0	0	0	0	0	0	0	0	0	1	1	0	0	0%	0	0%
No Violation Occurred	608	648	613	584	500	516	355	302	202	426	358	314	452	99%	545	98%
Total:	620	652	618	588	505	519	361	305	205	428	364	328	458	100%	555	100%
Uncontrollable Non-Issued Violations																
No Plate	11	11	16	15	15	12	13	10	9	14	21	16	14	27%	11	11%
Out of State Plate	1	2	2	2	2	2	0	3	4	3	3	2	2	4%	2	2%
Glare on Plate	0	1	1	0	1	1	0	0	0	0	0	0	0	1%	0	0%
Illegible Plate	0	2	0	0	1	0	0	2	2	1	0	0	1	1%	1	1%
Plate Obstructed	0	1	1	0	0	1	0	1	0	3	0	0	1	1%	0	0%
Windshield Glare	5	2	12	10	13	14	9	13	9	8	11	4	9	18%	11	11%
Driver Obstructed	1	1	1	1	1	5	1	1	2	1	5	0	2	3%	2	2%
Car Obstructed	1	3	1	2	8	2	3	1	1	1	0	0	2	4%	1	1%
No DMV Match Found	10	6	10	4	5	6	5	7	7	11	16	6	8	16%	5	5%
LASD Expired	0	0	0	0	0	0	0	0	0	0	0	0	0	0%	0	0%
LASD Return	5	7	5	9	5	7	14	13	11	27	19	19	12	145%	5	14%
Other	0	0	0	0	0	0	0	0	0	0	0	0	0	0%	59	61%
Total:	34	36	49	43	51	50	45	51	45	69	75	47	50	100%	97	100%
Controllable Non-Issued Violations																
Framing of Plate	0	0	0	0	0	1	0	0	0	0	0	0	0	1%	0	1%
Focus / Clarity of Plate	0	0	0	0	0	0	0	0	0	0	0	0	0	0%	1	2%
Dark Interior	2	6	4	3	5	10	4	7	8	5	5	1	5	62%	5	14%
Framing of Driver	0	0	0	0	0	0	0	0	0	0	0	0	0	0%	0	0%
Focus / Clarity of Driver	1	0	0	0	0	0	0	0	0	0	0	0	0	1%	1	2%
Framing of Car	3	2	2	2	3	4	3	5	2	5	3	1	3	36%	2	7%
Data Error	0	0	0	0	0	0	0	0	0	0	0	0	0	0%	0	1%
Exposure	0	0	0	0	0	0	0	0	0	0	0	0	0	0%	1	2%
Equipment Malfunction	0	0	0	0	0	0	0	0	0	0	0	0	0	0%	26	72%
ACS Expired	0	0	0	0	0	0	0	0	0	0	0	0	0	0%	0	0%
Total:	6	8	6	5	8	15	7	12	10	10	8	2	8	100%	36	100%
Summary Metrics																
Daily Average Vehicle Passes	988	1,201	1,246	1,123	1,113	1,171	770	1,155	872	1,292	1,021	937	Year to Date Average		2010 Average	
Average Issued Speed	15	15	15	15	15	15	15	15	15	15	15	16	1,074		1,177	
Average Issued Red	13.3	18.9	16.1	16.1	15.2	15.8	16.7	13.3	14.1	14.1	13.8	12.6	15		14.5	
Citation / Violation Issuance	59%	55%	53%	58%	54%	48%	43%	43%	38%	48%	43%	52%	49%		26%	
Controllable Issuance Rate	90%	87%	91%	93%	90%	80%	85%	80%	77%	88%	89%	96%	87%		55%	

Calls For Information

Reason for Call	Dec-11	3 Month Average	Year to Date Average	Year to Date Total	2009 Average
<i>Appointment</i>	14	17	17	198	29
<i>Bail</i>	45	40	36	427	46
<i>Complaint</i>	0	0	0	4	0
<i>Contest Violation</i>	53	56	52	624	44
<i>Courtesy Notice</i>	2	0	0	2	0
<i>Explain Citation</i>	17	17	13	155	10
<i>Explain Court</i>	0	0	0	5	0
<i>Explain the Project</i>	0	0	0	0	2
<i>Extension</i>	20	13	16	190	17
<i>Other</i>	0	0	0	0	0
<i>Affidavit of Non-Liability</i>	35	29	29	350	42
<i>Affidavit of Non-Liability Status</i>	2	3	3	36	4
<i>Traffic School</i>	11	6	11	134	18
Total Calls	199	182	177	2125	213
Appointments Scheduled	12	13	14	169	28
Affidavits of Non-Liability Processed	241	163	199	2387	232
Court Packets Prepared	186	189	184	2210	171



A **xerox** Company

**Los Angeles County MTA Orange Line
Monthly Citation Yield - By Location
December 2011**

Direction	Location	Code	Days of Enforcement	Events	Violations	Citations	Yield*
NB	Tujunga Ave @ Busway	1301	31	160	93	18	0.58
SB	Tujunga Ave @ Busway	1302	31	24	20	9	0.29
EB	Oxnard St. @ Buffalo Ave.	1313	31	86	44	29	0.94
WB	Oxnard St. @ Buffalo Ave.	1314	31	223	66	22	0.71
NB	Woodman Ave. @ Busway	1321	31	42	33	12	0.39
SB	Woodman Ave. @ Busway	1322	31	118	107	80	2.58
NB	Kester Ave. @ Busway	1331	31	58	43	25	0.81
SB	Kester Ave. @ Busway	1332	31	121	112	75	2.42
NB	Sepulveda Blvd. @ Busway	1341	31	253	240	120	3.87
SB	Sepulveda Blvd. @ Busway	1342	31	138	131	41	1.32
NB	Woodley @ Busway	1351	31	111	77	34	1.10
SB	Woodley @ Busway	1352	31	73	65	45	1.45
NB	Balboa Blvd. @ Busway	1361	31	142	93	54	1.74
SB	Balboa Blvd. @ Busway	1362	31	17	14	9	0.29
NB	White Oak Ave. @ Busway	1371	31	34	31	19	0.61
SB	White Oak Ave. @ Busway	1372	31	127	104	73	2.35
SB	Lindley Ave. @ Busway	1382	31	159	150	60	1.94
WB to NB	Lindley Ave. @ Oxnard St.	1385	31	1,911	19	8	0.26
NB	Reseda Blvd. @ Busway	1391	31	121	96	48	1.55
SB	Reseda Blvd. @ Busway	1392	31	50	37	19	0.61
SB	Mason Ave. @ Busway	1402	31	334	214	139	4.48
WB to NB	Mason Ave. @ Victory Blvd.	1405	31	838	64	39	1.26
SB	De Soto Ave. @ Busway	1412	31	300	258	164	5.29
WB to NB	De Soto Ave. @ Victory Blvd.	1415	31	430	102	53	1.71
Totals			31	5,870	2,213	1,195	38.55

*Yield is the number of citations issued per day of enforcement.



A **xerox** Company

**Los Angeles County MTA Orange Line
Disposition Summary Report
December 2011**

	Dec-11		3 Month Average		YTD Total		YTD Average		2010 Average	
Disposition Type	Count /Amount Paid		Count /Amount Paid		Count /Amount Paid		Count /Amount Paid		Count /Amount Paid	
<i>Bail Forfeiture</i>	277	\$139,062.00	202	\$101,502.33	2,994	\$1,500,998.00	250	\$125,083.17	310	\$148,246.42
<i>Fine Paid</i>	125	\$61,154.99	106	\$53,278.40	1,367	\$665,756.09	114	\$55,479.67	109	\$54,947.92
<i>Department Void</i>	17	\$0.00	3	\$0.00	64	\$0.00	5	\$0.00	15	\$0.00
<i>Not Guilty</i>	101	\$0.00	92	\$0.00	1,009	\$0.00	84	\$0.00	100	\$0.00
<i>Section D Void</i>	328	\$0.00	161	\$0.00	2,483	\$0.00	207	\$0.00	259	\$0.00
<i>Traffic School</i>	227	\$115,143.00	184	\$94,528.67	3,722	\$1,916,367.00	310	\$159,697.25	399	\$202,450.00
Court Gross Total	1075	\$315,359.99	748	\$249,309.40	11,639	\$4,083,121.09	970	\$340,260.09	1,192	\$405,644.33
MTA Gross Total*	629	\$91,217.97	492	\$71,384.68	8,083	\$1,176,017.01	674	\$98,001.42	818	\$125,217.73

*Logic built on following model (assuming the new 2009 fine and fee structure):

MTA receives \$146.31 of \$446.00 citation where bail forfeiture and fine paid occurs

MTA receives \$148.05 of \$509.00 citation when traffic school option is paid for

	<u>Total</u> <u>Events</u>	<u>Non</u> <u>Violations</u>	<u>Potential</u> <u>Violations</u>	<u>Percent</u> <u>Citable</u>	<u>Non Issued</u> <u>Violations</u>	<u>No DMV</u> <u>Match</u>	<u>Police/</u> <u>Client</u> <u>Rejected</u>	<u>Citations</u> <u>Issued</u>	<u>DMV</u> <u>Match</u> <u>Rate</u>	<u>Issuance</u> <u>Rate</u>	<u>Dispo</u> <u>Paid</u>	<u>Pay</u> <u>Rate</u>	<u>Closed</u> <u>No Pay</u>	<u>Pending</u>	<u>Closure</u> <u>Rate</u>	<u>Court</u> <u>Packs</u>	<u>Contest</u> <u>Rate</u>
Aug-06	3854	864	2990	77.6%	2735	45	20	255	85.9%	8.5%	206	81%	20	29	89%	0	-
Sep-06	4212	934	3278	77.8%	1562	199	23	1716	89.7%	52.3%	1,390	81%	141	185	89%	0	-
Oct-06	3855	788	3067	79.6%	1069	225	27	1998	90.0%	65.1%	1,599	80%	184	215	89%	36	-
Nov-06	12589	8872	3717	29.5%	2186	169	27	1531	90.2%	41.2%	1,211	79%	124	196	87%	75	-
Dec-06	13009	9452	3557	27.3%	1792	190	16	1765	90.4%	49.6%	1,413	80%	141	211	88%	99	48.1%
Jan-07	9820	6557	3263	33.2%	1376	185	29	1887	91.2%	57.8%	1,476	86%	142	269	86%	158	11.4%
Feb-07	6746	3641	3105	46.0%	1180	255	15	1925	88.4%	62.0%	1,501	75%	163	261	86%	154	9.6%
Mar-07	5452	2081	3371	61.8%	1261	318	17	2110	87.0%	62.6%	1,707	111%	158	245	88%	105	8.7%
Apr-07	5235	2116	3119	59.6%	1080	283	35	2039	88.0%	65.4%	1,636	93%	134	269	87%	224	15.9%
May-07	4735	1643	3092	65.3%	1005	268	37	2087	88.8%	67.5%	1,617	86%	144	326	84%	176	11.9%
Jun-07	5004	1725	3279	65.5%	1147	288	36	2132	88.3%	65.0%	1,650	86%	148	334	84%	231	15.4%
Jul-07	5396	1906	3490	64.7%	1919	273	43	1571	85.5%	45.0%	1168	55%	115	288	82%	292	17.1%
Aug-07	5664	2259	3405	60.1%	1507	321	131	1898	86.3%	55.7%	1379	68%	140	379	80%	357	21.8%
Sep-07	4021	1247	2774	69.0%	1111	245	99	1663	87.8%	59.9%	1142	55%	124	397	76%	238	14.7%
Oct-07	4952	1811	3141	63.4%	1469	215	193	1672	89.7%	53.2%	1131	53%	147	394	76%	335	20.3%
Nov-07	4676	1810	2866	61.3%	1201	180	151	1665	91.0%	58.1%	1123	71%	156	386	77%	272	23.3%
Dec-07	4466	1783	2683	60.1%	1269	207	191	1414	88.6%	52.7%	989	52%	144	281	80%	284	20.6%
Jan-08	4150	1651	2499	60.2%	1142	188	166	1357	89.0%	54.3%	1112	67%	99	146	89%	243	21.3%
Feb-08	3875	1446	2429	62.7%	1245	157	206	1184	89.9%	48.7%	943	56%	108	133	89%	218	19.3%
Mar-08	4696	1887	2809	59.8%	1570	169	148	1239	89.1%	44.1%	992	60%	86	161	87%	239	21.3%
Apr-08	4417	1835	2582	58.5%	1297	134	72	1285	91.0%	49.8%	1013	72%	99	173	87%	231	23.4%
May-08	4764	1847	2917	61.2%	1642	178	157	1275	88.9%	43.7%	1014	75%	94	167	87%	199	17.9%
Jun-08	4401	1484	2917	66.3%	1481	182	120	1436	89.5%	49.2%	1144	97%	105	187	87%	277	29.4%
Jul-08	4097	1558	2539	62.0%	1230	170	94	1309	89.2%	51.6%	972	78%	166	171	87%	240	24.2%
Aug-08	4211	1623	2588	61.5%	1222	167	161	1366	90.1%	52.8%	1017	79%	128	221	84%	186	18.4%
Sep-08	4446	1868	2578	58.0%	1153	173	100	1425	89.8%	55.3%	1120	88%	128	177	88%	318	31.4%
Oct-08	4412	1715	2697	61.1%	1179	139	115	1518	92.2%	56.3%	1141	79%	136	241	84%	210	18.4%
Nov-08	3795	1485	2310	60.9%	948	145	125	1362	91.1%	59.0%	1029	79%	142	191	86%	154	15.8%
Dec-08	3759	1479	2280	60.7%	924	144	97	1356	91.0%	59.5%	1054	77%	120	182	87%	185	18.2%
Jan-09	3703	1404	2299	62.1%	882	157	87	1417	90.5%	61.6%	1091	77%	147	179	87%	219	19.6%
Feb-09	3397	1348	2049	60.3%	853	125	64	1196	91.0%	58.4%	912	60%	151	133	89%	309	27.1%
Mar-09	3731	1446	2285	61.2%	978	145	86	1307	90.6%	57.2%	1010	74%	130	167	87%	154	15.0%
Apr-09	3693	1548	2145	58.1%	926	133	74	1219	90.7%	56.8%	956	71%	97	166	86%	203	19.3%
May-09	3644	1458	2186	60.0%	936	139	102	1250	90.7%	57.2%	959	68%	128	163	87%	219	20.1%
Jun-09	3298	1316	1982	60.1%	887	118	112	1095	91.1%	55.2%	815	68%	137	143	87%	214	23.5%
Jul-09	3417	1401	2016	59.0%	829	147	42	1187	89.3%	58.9%	911	70%	111	165	86%	225	22.3%
Aug-09	3225	1295	1930	59.8%	804	142	62	1126	89.3%	58.3%	835	68%	143	148	87%	168	17.6%
Sep-09	3092	1304	1788	57.8%	700	119	91	1088	90.8%	60.9%	780	62%	157	151	86%	152	15.8%
Oct-09	3455	1386	2069	59.9%	875	125	82	1194	91.1%	57.7%	875	80%	158	161	87%	216	26.5%
Nov-09	3254	1333	1921	59.0%	815	118	71	1106	90.9%	57.6%	801	67%	155	150	86%	34	3.7%
Dec-09	3360	1423	1937	57.6%	851	135	90	1086	89.7%	56.1%	810	72%	123	153	86%	35	4.2%



**Los Angeles County MTA Orange Line
Performance Report
December 2011**

	<u>Total</u> <u>Events</u>	<u>Non</u> <u>Violations</u>	<u>Potential</u> <u>Violations</u>	<u>Percent</u> <u>Citable</u>	<u>Non Issued</u> <u>Violations</u>	<u>No DMV</u> <u>Match</u>	<u>Police/</u> <u>Client</u> <u>Rejected</u>	<u>Citations</u> <u>Issued</u>	<u>DMV</u> <u>Match</u> <u>Rate</u>	<u>Issuance</u> <u>Rate</u>	<u>Dispo</u> <u>Paid</u>	<u>Pay</u> <u>Rate</u>	<u>Closed</u> <u>No Pay</u>	<u>Pending</u>	<u>Closure</u> <u>Rate</u>	<u>Court</u> <u>Packs</u>	<u>Contest</u> <u>Rate</u>
Jan-10	2771	1034	1737	62.7%	694	128	85	1043	89.8%	60.0%	783	72%	122	138	87%	148	19.0%
Feb-10	2817	1150	1667	59.2%	782	121	87	885	88.9%	53.1%	599	50%	131	155	82%	148	16.9%
Mar-10	3133	1198	1935	61.8%	767	101	73	1168	92.5%	60.4%	808	73%	178	182	84%	202	25.2%
Apr-10	3145	1278	1867	59.4%	828	130	59	1039	89.4%	55.7%	741	68%	138	160	85%	148	18.3%
May-10	3557	1390	2167	60.9%	1040	154	125	1127	89.0%	52.0%	782	75%	193	152	87%	145	18.5%
Jun-10	6773	4598	2175	32.1%	1056	124	19	1119	90.2%	51.4%	793	90%	146	180	84%	176	29.4%
Jul-10	10157	7542	2615	25.7%	1353	126	10	1262	91.0%	48.3%	896	77%	166	200	84%	189	23.4%
Aug-10	9206	6923	2283	24.8%	1115	116	38	1168	91.2%	51.2%	777	75%	118	273	77%	196	26.5%
Sep-10	8403	6311	2092	24.9%	978	115	29	1114	90.9%	53.3%	746	66%	113	255	77%	200	25.6%
Oct-10	7902	5988	1914	24.2%	834	122	21	1080	90.0%	56.4%	725	65%	99	256	76%	160	20.2%
Nov-10	7298	5430	1868	25.6%	703	120	12	1165	90.7%	62.4%	771	61%	74	320	73%	148	16.5%
Dec-10	7316	5397	1919	26.2%	743	102	60	1176	92.4%	61.3%	740	63%	122	314	73%	178	22.9%
Jan-11	6947	5317	1630	23.5%	636	134	61	994	88.7%	61.0%	598	54%	100	296	70%	140	18.8%
Feb-11	6889	5368	1521	22.1%	565	100	87	956	91.3%	62.9%	525	49%	111	320	67%	106	14.6%
Mar-11	7953	6062	1891	23.8%	813	118	88	1078	90.8%	57.0%	566	49%	134	378	65%	232	30.1%
Apr-11	7672	5756	1916	25.0%	753	105	121	1163	92.4%	60.7%	472	40%	277	414	64%	188	25.4%
May-11	7952	5867	2085	26.2%	921	125	144	1164	91.3%	55.8%	419	42%	245	500	57%	200	33.4%
Jun-11	7750	5825	1925	24.8%	1011	97	179	914	91.8%	47.5%	292	31%	114	508	44%	252	48.0%
Jul-11	6872	4884	1988	28.9%	1094	137	255	894	89.3%	45.0%	270	25%	49	575	36%	152	26.9%
Aug-11	5931	3864	2067	34.9%	1155	130	323	912	90.5%	44.1%	228	20%	18	666	27%	186	32.9%
Sep-11	5918	3827	2091	35.3%	1099	139	297	992	90.3%	47.4%	221	19%	9	762	23%	244	43.1%
Oct-11	6525	4144	2381	36.5%	1181	171	329	1200	89.9%	50.4%	163	14%	11	1,026	15%	174	30.7%
Nov-11	5888	3780	2108	35.8%	1046	173	239	1062	88.3%	50.4%	75	6%	3	984	7%	150	26.5%
Dec-11	5870	3657	2213	37.7%	1018	106	354	1195	93.6%	54.0%	5	0%	43	1,147	4%	186	39.4%
Total	350,623	192,619	158,004	45.1%	72,423	10,409	6,709	85,581	89.9%	54.2%	58,639	71.11%	8,087	18,855	80.89%	12,132	22.03%

* Pay Rate and Closure Rate percentages are based on a 3 month (90 day) lag

** Contested Citations Data Available from January 2006 to present

*** Contested Citations take into account a 3 month (90 day) lag from the violation date to the trail date.