

City of West Hollywood

Photo Enforcement Program



Monthly Report



March 2013



Prepared by: Xerox State and Local Solutions
Confidential



Table of Contents

Page Title	Page
<i>Executive Summary</i>	2
<i>Approach Summary Report, All Locations</i>	3
<i>Approach Summary Report, Location 3103: E/B Beverly @ Robertson</i>	4
<i>Approach Summary Report, Location 3104: W/B Beverly @ Robertson</i>	5
<i>Approach Summary Report, Location 3111: N/B Fairfax @ Fountain</i>	6
<i>Approach Summary Report, Location 3112: S/B Fairfax @ Fountain</i>	7
<i>Approach Summary Report, Location 3113: E/B Fountain @ Fairfax</i>	8
<i>Approach Summary Report, Location 3121: N/B Crescent Heights @ Fountain</i>	9
<i>Approach Summary Report, Location 3122: S/B Crescent Heights @ Fountain</i>	10
<i>Approach Summary Report, Location 3123: E/B Fountain @ Crescent Heights</i>	11
<i>Approach Summary Report, Location 3124: W/B Fountain @ Crescent Heights</i>	12
<i>Approach Summary Report, Location 3131: N/B La Cienega @ Melrose</i>	13
<i>Approach Summary Report, Location 3132: S/B La Cienega @ Melrose</i>	14
<i>Approach Summary Report, Location 3133: E/B Melrose @ La Cienega</i>	15
<i>Approach Summary Report, Location 3141: N/B La Brea @ Fountain</i>	16
<i>Approach Summary Report, Location 3142: S/B La Brea @ Fountain</i>	17
<i>Approach Summary Report, Location 3143: E/B Sunset @ La Cienega</i>	18
<i>Approach Summary Report, Location 3144: W/B Sunset @ La Cienega</i>	19
<i>Approach Summary Report, Location 3151: N/B Fairfax @ Santa Monica</i>	20
<i>Approach Summary Report, Location 3152: S/B Fairfax @ Santa Monica</i>	21
<i>Approach Summary Report, Location 3153: E/B Santa Monica @ Fairfax</i>	22
<i>Approach Summary Report, Location 3154: W/B Santa Monica @ Fairfax</i>	23
<i>Approach Summary Report, Location 3161: N/B La Brea @ Santa Monica</i>	24
<i>Approach Summary Report, Location 3162: S/B La Brea @ Santa Monica</i>	25
<i>Approach Summary Report, Location 3163: E/B Santa Monica @ La Brea</i>	26
<i>Approach Summary Report, Location 3164: W/B Santa Monica @ La Brea</i>	27
<i>Customer Service Report</i>	28
<i>Monthly Citation Yield Report</i>	29
<i>Camera Rotation Log</i>	30
<i>Performance Report</i>	31
<i>Disposition Summary Report</i>	32

Executive Summary

In March 2013, the photo enforcement project for the City of West Hollywood captured 4,253 events. The project recorded 2,009 violations and 2,244 non-violations. The Sheriff's Department issued 1,081 citations reflecting a 54% issuance rate and a controllable issuance rate of 97%.

In March there were the following controllable non-issued violations:

- 27 identified as dark interior (no pattern, usual issues of sun glare)
- 1 identified as framing of plate at 3111 (at 8pm on 4/17 - isolated)
- 2 identified as focus/clarity of Driver at 3131 and 3112 (- both isolated)
- 1 identified as framing of car at 3144 (at 12:30am on 4/7 - isolated)
- 2 Equipment Malfunctions at 3164 (on 4/1 and 4/12 - No flash, both isolated)

Citation issuance rose to over 1,000 again during the month of March. A reduction in events was also observed, while violations rose slightly over the previous months (vehicle counts however remained fairly flat during this period). In light of the recent increase in amber phase at several locations we will continue to monitor data over the coming months and produce a statistical analysis to determine what correlations, if any, may occur.

In the News - Photo Enforcement Around the Country

California: Audit Finds Split-Second Yellow at Red Light Camera Intersection

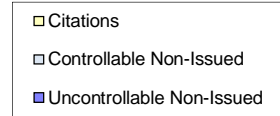
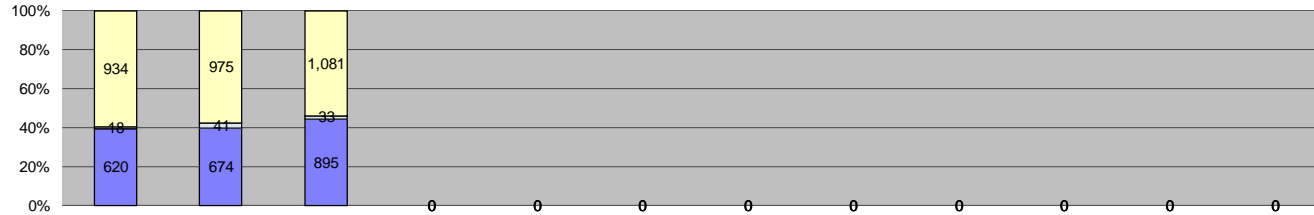
Thursday, April 25, 2013

www.thenewspaper.com

Red light camera opponents often charge municipalities exploit intersections that have dangerously short yellow times for the purpose of issuing tickets. An outside audit of the Sacramento, California red light camera program confirmed that tickets were issued at an intersection where the yellow warning period on occasion flashed by faster than the eye could see. The transportation consulting firm Iteris conducted a spot check of the 22 intersections where red light cameras were in use in the city and county of Sacramento over a 24-hour period last year. Though the city had audits performed when the program was new, the cameras have not had an independent review in the past six years. "Because the Redflex equipment collects the yellow (amber) time from the controller output rather than from the programmed time in the controller, the city of Sacramento had requested a review of the yellow interval to determine if there are any discrepancies between what is programmed and what is being outputted, as well as any deviation per output," the report explained. According to the traffic controller, the intersection of Mack Road and Valley High Drive was supposed to provide 4.7 seconds of yellow. The Redflex camera system reported seeing yellows as short as 0.056 seconds on July 11, 2012 at around 9:30am. The short yellow kicked in during at least eleven signal cycles. The rest of the intersections were found to be within 0.05 seconds of the programmed time. The audit also revealed that city intersections provide yellow signal timing between 0.1 and 0.4 seconds shorter than the county provides under identical conditions. The county also gives motorists more warning by calculating speed limits based on the 90th percentile speed of motorists, while the city uses the lower, 85th percentile figure. The auditors found a few locations did not even meet the legal minimum yellow time specified in the California Manual on Uniform Traffic Control Devices. The county specifies a 5.1 second yellow for a 60 MPH intersection, which is 0.3 seconds shorter than the legally required minimum under the state MUTCD. The report recommended the city and county come into compliance with the law and continue having regular independent checks on the cameras and signal timing. It also chided officials for not trimming trees when the limbs hide the cameras and legally required warning signs.



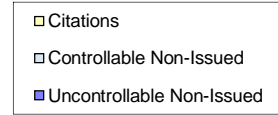
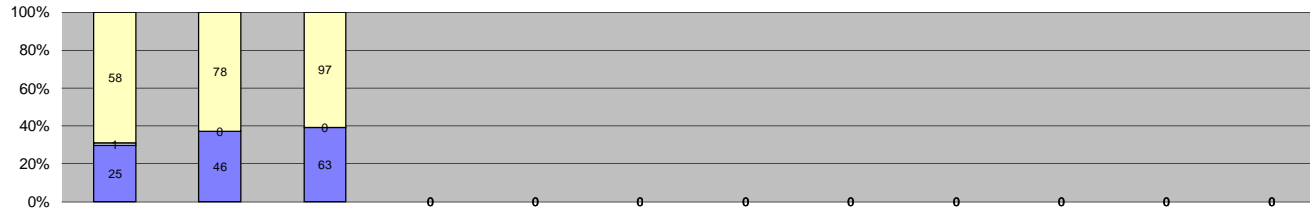
City of West Hollywood Approach Summary Report All Locations



Events	Jan-13	Feb-13	Mar-13	Apr-13	May-13	Jun-13	Jul-13	Aug-13	Sep-13	Oct-13	Nov-13	Dec-13	Year to Date Average		2012 Average		
													Quantity	%	Quantity	%	
Non-Violations	2,466	2,191	2,244											2,300	57%	2,596	53%
Violations	1,572	1,690	2,009											1,757	43%	2,275	47%
Total:	4,038	3,881	4,253											4,057	100%	4,871	100%
Violations																	
Uncontrollable Non-Issued	620	674	895											730	42%	955	41%
Controllable Non-Issued	18	41	33											31	2%	78	3%
Citations	934	975	1,081											997	57%	1,285	55%
Total:	1,572	1,690	2,009											1,757	100%	2,318	100%
Non-Violations																	
Rear Axle Violation	12	28	11											17	1%	36	1%
Emergency Vehicle	87	68	74											76	3%	127	5%
Right Turn	948	871	1,006											942	41%	1,096	42%
No Violation Occurred	1,419	1,224	1,153											1,265	55%	1,371	52%
Total:	2,466	2,191	2,244											2,300	100%	2,629	100%
Uncontrollable Non-Issued Violations																	
No Plate	309	317	392											339	46%	408	37%
Out of State Plate	4	34	24											21	3%	72	6%
Glare on Plate	4	7	5											5	1%	32	3%
Illegible Plate	30	22	23											25	3%	45	4%
Plate Obstructed	18	17	25											20	3%	40	4%
Windshield Glare	49	57	176											94	13%	109	10%
Driver Obstructed	12	8	23											14	2%	34	3%
Car Obstructed	29	35	57											40	6%	43	4%
No DMV Match Found	135	149	139											141	19%	183	16%
LASD Expired	0	0	1											1	0%	47	4%
LASD Return	28	26	30											28	4%	64	6%
Yellow Interval Not Met	0	0	0											0	0%	12	1%
Other	2	2	0											2	0%	26	2%
Total:	620	674	895											731	100%	1,115	100%
Controllable Non-Issued Violations																	
Framing of Plate	0	1	1											1	3%	8	4%
Focus / Clarity of Plate	0	1	0											1	3%	13	6%
Dark Interior	15	14	27											19	51%	28	13%
Framing of Driver	0	0	0											0	0%	3	2%
Focus / Clarity of Driver	1	0	2											2	4%	6	3%
Framing of Car	0	14	1											8	20%	11	5%
Operator / Data Error	0	3	0											3	8%	68	31%
Exposure	0	0	0											0	0%	8	4%
Equipment Malfunction	2	8	2											4	11%	32	15%
ACS Expired	0	0	0											0	0%	41	19%
Total:	18	41	33											37	100%	217	100%
Summary Metrics																	
Daily Ave Vehicle Passes	256,668	250,934	247,763											251,788		320,929	
Ave Issued Speed	33	32	32											32		32	
Ave Issued Red Seconds	1.0	1.0	0.9											1.0		0.9	
Citation / Violation Iss Rate	59%	58%	54%											57%		57%	
Controllable Iss Rate	98%	96%	97%											97%		97%	



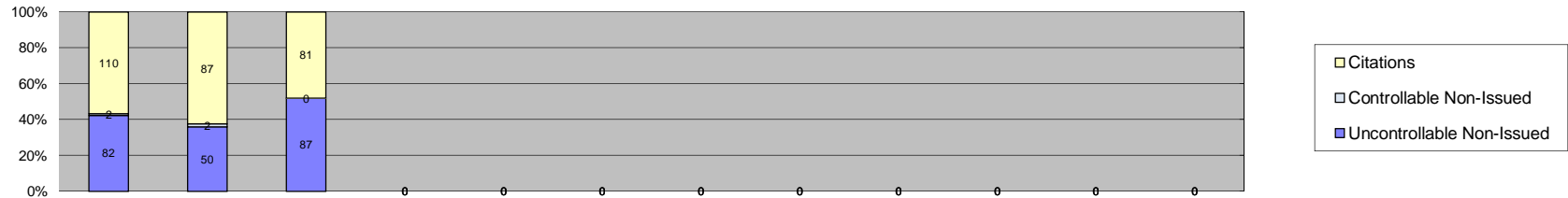
**City of West Hollywood
Approach Summary Report
Location 3103: E/B Beverly @ Robertson (GLD-4 Camera System)**



Events	Jan-13	Feb-13	Mar-13	Apr-13	May-13	Jun-13	Jul-13	Aug-13	Sep-13	Oct-13	Nov-13	Dec-13	Year to Date Average		2012 Average		
													Quantity	%	Quantity	%	
Non-Violations	35	32	40											36	23%	37	21%
Violations	84	124	160											123	77%	139	79%
Total:	119	156	200											158	100%	176	100%
Violations																	
Uncontrollable Non-Issued	25	46	63											45	36%	53	38%
Controllable Non-Issued	1	0	0											1	1%	3	2%
Citations	58	78	97											78	63%	84	60%
Total:	84	124	160											123	100%	140	100%
Non-Violations																	
Rear Axle Violation	1	1	0											1	3%	1	3%
Emergency Vehicle	4	3	7											5	13%	8	20%
Right Turn	2	5	0											4	9%	1	4%
No Violation Occurred	28	23	33											28	75%	29	73%
Total:	35	32	40											37	100%	39	100%
Uncontrollable Non-Issued Violations																	
No Plate	13	21	31											22	47%	22	37%
Out of State Plate	0	2	0											2	4%	3	5%
Glare on Plate	0	0	0											0	0%	1	2%
Illegible Plate	0	0	0											0	0%	1	2%
Plate Obstructed	0	2	1											2	3%	2	3%
Windshield Glare	2	3	6											4	8%	6	10%
Driver Obstructed	1	2	8											4	8%	5	8%
Car Obstructed	2	1	1											1	3%	2	3%
No DMV Match Found	4	12	10											9	19%	9	14%
LASD Expired	0	0	0											0	0%	1	2%
LASD Return	3	3	6											4	9%	8	12%
Yellow Interval Not Met	0	0	0											0	0%	0	0%
Other	0	0	0											0	0%	1	2%
Total:	25	46	63											47	100%	60	100%
Controllable Non-Issued Violations																	
Framing of Plate	0	0	0											0	0%	0	0%
Focus / Clarity of Plate	0	0	0											0	0%	0	0%
Dark Interior	1	0	0											1	100%	1	6%
Framing of Driver	0	0	0											0	0%	0	0%
Focus / Clarity of Driver	0	0	0											0	0%	1	6%
Framing of Car	0	0	0											0	0%	0	0%
Operator / Data Error	0	0	0											0	0%	6	38%
Exposure	0	0	0											0	0%	0	0%
Equipment Malfunction	0	0	0											0	0%	0	0%
ACS Expired	0	0	0											0	0%	8	50%
Total:	1	0	0											1	100%	16	100%
Summary Metrics																	
Daily Ave Vehicle Passes	10,727	10,693	10,210											10,543		10,782	
Ave Issued Speed	31	29	29											30		30	
Ave Issued Red Seconds	1.0	0.9	0.8											1		0.9	
Citation / Violation Iss Rate	69%	63%	61%											64%		60%	
Controllable Iss Rate	98%	100%	100%											99%		97%	



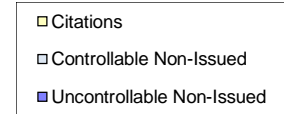
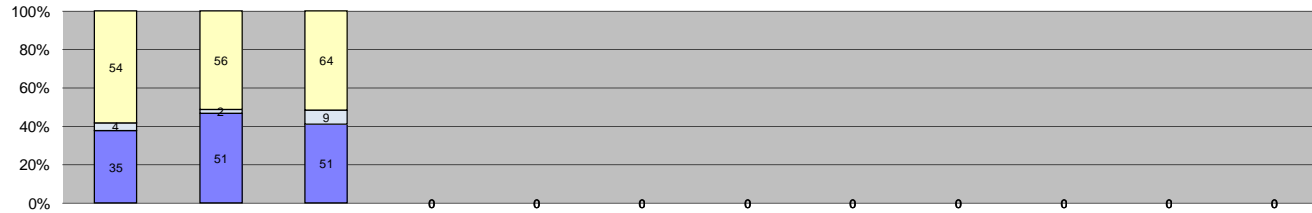
**City of West Hollywood
Approach Summary Report
Location 3104: W/B Beverly @ Robertson (GLD-4 Camera System)**



Events	Jan-13	Feb-13	Mar-13	Apr-13	May-13	Jun-13	Jul-13	Aug-13	Sep-13	Oct-13	Nov-13	Dec-13	Year to Date Average		2012 Average		
													Quantity	%	Quantity	%	
Non-Violations	7	16	19											14	8%	13	8%
Violations	194	139	168											167	92%	152	92%
Total:	201	155	187											181	100%	165	100%
Violations																	
Uncontrollable Non-Issued	82	50	87											73	44%	68	45%
Controllable Non-Issued	2	2	0											2	1%	3	2%
Citations	110	87	81											93	55%	82	54%
Total:	194	139	168											168	100%	152	100%
Non-Violations																	
Rear Axle Violation	3	9	3											5	36%	3	19%
Emergency Vehicle	1	2	2											2	12%	2	17%
Right Turn	2	2	1											2	12%	1	9%
No Violation Occurred	1	3	13											6	40%	8	55%
Total:	7	16	19											14	100%	14	100%
Uncontrollable Non-Issued Violations																	
No Plate	43	13	28											28	38%	22	29%
Out of State Plate	1	3	2											2	3%	3	5%
Glare on Plate	0	0	1											1	1%	3	5%
Illegible Plate	6	3	2											4	5%	4	6%
Plate Obstructed	2	1	0											2	2%	2	2%
Windshield Glare	5	8	18											10	14%	8	11%
Driver Obstructed	6	3	9											6	8%	6	8%
Car Obstructed	2	1	3											2	3%	2	2%
No DMV Match Found	10	14	18											14	19%	12	17%
LASD Expired	0	0	0											0	0%	3	3%
LASD Return	7	4	6											6	8%	9	12%
Yellow Interval Not Met	0	0	0											0	0%	0	0%
Other	0	0	0											0	0%	1	1%
Total:	82	50	87											74	100%	75	100%
Controllable Non-Issued Violations																	
Framing of Plate	0	0	0											0	0%	1	9%
Focus / Clarity of Plate	0	1	0											1	40%	2	13%
Dark Interior	2	1	0											2	60%	1	9%
Framing of Driver	0	0	0											0	0%	0	0%
Focus / Clarity of Driver	0	0	0											0	0%	1	9%
Framing of Car	0	0	0											0	0%	1	9%
Operator / Data Error	0	0	0											0	0%	0	0%
Exposure	0	0	0											0	0%	0	0%
Equipment Malfunction	0	0	0											0	0%	1	12%
ACS Expired	0	0	0											0	0%	4	39%
Total:	2	2	0											3	100%	11	100%
Summary Metrics																	
	Year to Date Average												2012 Average				
Daily Ave Vehicle Passes	11,944	11,233	11,801											11,659	11,685		
Ave Issued Speed	24	22	23											23	22		
Ave Issued Red Seconds	1.1	0.7	1.1											1	0.6		
Citation / Violation Iss Rate	57%	63%	48%											56%	54%		
Controllable Iss Rate	98%	98%	100%											99%	97%		



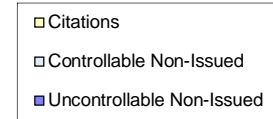
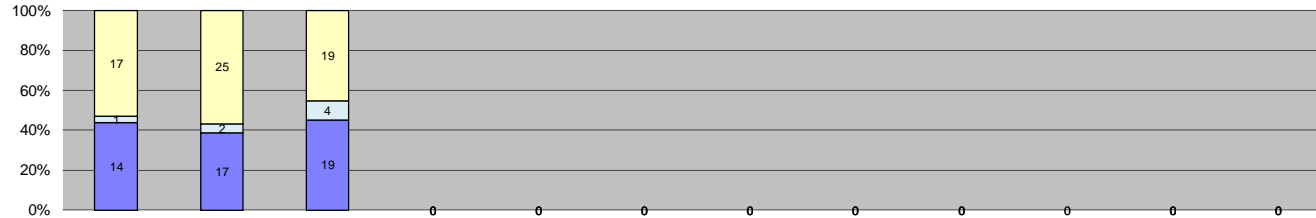
**City of West Hollywood
Approach Summary Report
Location 3111: N/B Fairfax @ Fountain (GLD-4 Camera System)**



Events	Jan-13	Feb-13	Mar-13	Apr-13	May-13	Jun-13	Jul-13	Aug-13	Sep-13	Oct-13	Nov-13	Dec-13	Year to Date Average		2012 Average		
													Quantity	%	Quantity	%	
Non-Violations	13	9	18											13	11%	13	7%
Violations	93	109	124											109	89%	182	93%
Total:	106	118	142											122	100%	195	100%
Violations																	
Uncontrollable Non-Issued	35	51	51											46	42%	71	39%
Controllable Non-Issued	4	2	9											5	5%	4	2%
Citations	54	56	64											58	53%	109	59%
Total:	93	109	124											109	100%	183	100%
Non-Violations																	
Rear Axle Violation	3	1	1											2	12%	3	17%
Emergency Vehicle	2	1	0											2	11%	3	23%
Right Turn	2	2	6											3	24%	3	18%
No Violation Occurred	6	5	11											7	53%	6	42%
Total:	13	9	18											14	100%	14	100%
Uncontrollable Non-Issued Violations																	
No Plate	13	24	16											18	35%	31	41%
Out of State Plate	0	4	0											4	8%	5	6%
Glare on Plate	0	1	2											2	3%	2	2%
Illegible Plate	3	3	4											3	7%	2	2%
Plate Obstructed	1	1	5											2	5%	2	3%
Windshield Glare	4	4	11											6	13%	7	9%
Driver Obstructed	1	1	0											1	2%	3	3%
Car Obstructed	2	1	2											2	3%	2	3%
No DMV Match Found	9	11	6											9	17%	15	19%
LASD Expired	0	0	1											1	2%	2	3%
LASD Return	2	1	4											2	5%	6	8%
Yellow Interval Not Met	0	0	0											0	0%	0	0%
Other	0	0	0											0	0%	1	1%
Total:	35	51	51											50	100%	77	100%
Controllable Non-Issued Violations																	
Framing of Plate	0	0	1											1	18%	1	9%
Focus / Clarity of Plate	0	0	0											0	0%	1	9%
Dark Interior	4	2	8											5	82%	1	9%
Framing of Driver	0	0	0											0	0%	0	0%
Focus / Clarity of Driver	0	0	0											0	0%	0	0%
Framing of Car	0	0	0											0	0%	0	0%
Operator / Data Error	0	0	0											0	0%	0	0%
Exposure	0	0	0											0	0%	0	0%
Equipment Malfunction	0	0	0											0	0%	2	14%
ACS Expired	0	0	0											0	0%	6	58%
Total:	4	2	9											6	100%	11	100%
Summary Metrics																	
Daily Ave Vehicle Passes	12,614	11,986	12,341											12,313		12,261	
Ave Issued Speed	32	35	34											33		35	
Ave Issued Red Seconds	0.4	0.9	0.4											1		0	
Citation / Violation Iss Rate	58%	51%	52%											54%		60%	
Controllable Iss Rate	93%	97%	88%											92%		98%	



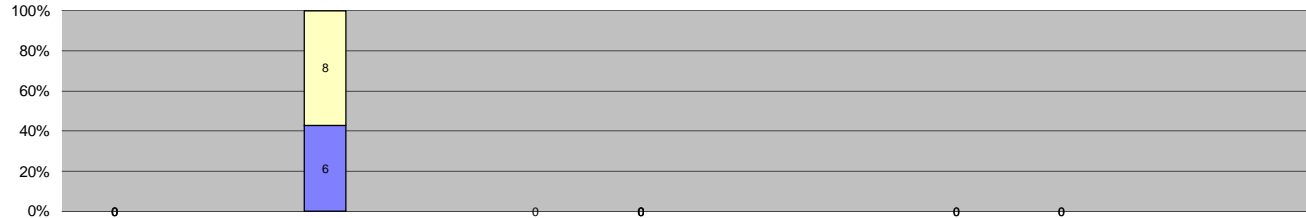
**City of West Hollywood
Approach Summary Report
Location 3112: S/B Fairfax @ Fountain (GLD-4 Camera System)**



Events	Jan-13	Feb-13	Mar-13	Apr-13	May-13	Jun-13	Jul-13	Aug-13	Sep-13	Oct-13	Nov-13	Dec-13	Year to Date Average		2012 Average		
													Quantity	%	Quantity	%	
Non-Violations	8	9	7											8	17%	10	13%
Violations	32	44	42											39	83%	65	87%
Total:	40	53	49											47	100%	75	100%
Violations																	
Uncontrollable Non-Issued	14	17	19											17	42%	25	39%
Controllable Non-Issued	1	2	4											2	6%	5	7%
Citations	17	25	19											20	52%	35	53%
Total:	32	44	42											39	100%	65	100%
Non-Violations																	
Rear Axle Violation	1	0	1											1	12%	2	17%
Emergency Vehicle	1	5	1											2	28%	3	23%
Right Turn	4	1	2											2	28%	3	30%
No Violation Occurred	2	3	3											3	32%	3	30%
Total:	8	9	7											8	100%	11	100%
Uncontrollable Non-Issued Violations																	
No Plate	8	6	10											8	40%	12	36%
Out of State Plate	0	0	1											1	5%	2	8%
Glare on Plate	0	0	0											0	0%	2	6%
Illegible Plate	0	0	0											0	0%	2	7%
Plate Obstructed	0	0	1											1	5%	2	6%
Windshield Glare	1	0	5											3	15%	3	8%
Driver Obstructed	1	0	0											1	5%	1	4%
Car Obstructed	0	0	0											0	0%	1	3%
No DMV Match Found	3	11	1											5	25%	4	13%
LASD Expired	0	0	0											0	0%	1	3%
LASD Return	1	0	1											1	5%	2	6%
Yellow Interval Not Met	0	0	0											0	0%	0	0%
Other	0	0	0											0	0%	0	0%
Total:	14	17	19											20	100%	32	100%
Controllable Non-Issued Violations																	
Framing of Plate	0	0	0											0	0%	1	6%
Focus / Clarity of Plate	0	0	0											0	0%	0	0%
Dark Interior	1	2	3											2	67%	3	21%
Framing of Driver	0	0	0											0	0%	1	6%
Focus / Clarity of Driver	0	0	1											1	33%	1	6%
Framing of Car	0	0	0											0	0%	0	0%
Operator / Data Error	0	0	0											0	0%	6	37%
Exposure	0	0	0											0	0%	1	6%
Equipment Malfunction	0	0	0											0	0%	1	6%
ACS Expired	0	0	0											0	0%	2	12%
Total:	1	2	4											3	100%	16	100%
Summary Metrics																	
Daily Ave Vehicle Passes	11,137	10,699	10,728											10,854		11,245	
Ave Issued Speed	38	33	36											36		36	
Ave Issued Red Seconds	0.5	0.6	0.5											1		0.8	
Citation / Violation Iss Rate	53%	57%	45%											52%		54%	
Controllable Iss Rate	94%	93%	83%											90%		88%	



**City of West Hollywood
Approach Summary Report
Location 3113: E/B Fountain @ Fairfax (GLD-4 Camera System)**

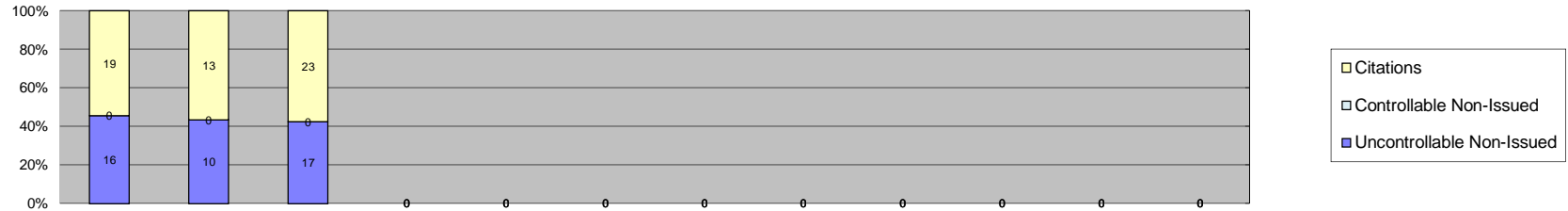


- Citations
- Controllable Non-Issued
- Uncontrollable Non-Issued

Events	Jan-13	Feb-13	Mar-13	Apr-13	May-13	Jun-13	Jul-13	Aug-13	Sep-13	Oct-13	Nov-13	Dec-13	Year to Date Average		2012 Average		
													Quantity	%	Quantity	%	
Non-Violations	0	0	45											45	76%	37	71%
Violations	0	0	14											14	24%	15	29%
Total:	0	0	59											59	100%	52	100%
Violations																	
Uncontrollable Non-Issued	0	0	6											6	43%	6	38%
Controllable Non-Issued	0	0	0											0	0%	0	0%
Citations	0	0	8											8	57%	9	62%
Total:	0	0	14											14	100%	15	100%
Non-Violations																	
Rear Axle Violation	0	0	0											0	0%	0	0%
Emergency Vehicle	0	0	2											2	4%	4	9%
Right Turn	0	0	28											28	62%	23	53%
No Violation Occurred	0	0	15											15	33%	17	38%
Total:	0	0	45											45	100%	44	100%
Uncontrollable Non-Issued Violations																	
No Plate	0	0	4											4	67%	3	38%
Out of State Plate	0	0	0											0	0%	1	11%
Glare on Plate	0	0	0											0	0%	0	0%
Illegible Plate	0	0	0											0	0%	0	0%
Plate Obstructed	0	0	0											0	0%	0	0%
Windshield Glare	0	0	0											0	0%	0	0%
Driver Obstructed	0	0	0											0	0%	0	0%
Car Obstructed	0	0	0											0	0%	1	11%
No DMV Match Found	0	0	2											2	33%	2	17%
LASD Expired	0	0	0											0	0%	0	0%
LASD Return	0	0	0											0	0%	0	0%
Yellow Interval Not Met	0	0	0											0	0%	0	0%
Other	0	0	0											0	0%	2	23%
Total:	0	0	6											6	100%	9	100%
Controllable Non-Issued Violations																	
Framing of Plate	0	0	0											0	0%	0	0%
Focus / Clarity of Plate	0	0	0											0	0%	0	0%
Dark Interior	0	0	0											0	0%	0	0%
Framing of Driver	0	0	0											0	0%	0	0%
Focus / Clarity of Driver	0	0	0											0	0%	0	0%
Framing of Car	0	0	0											0	0%	0	0%
Operator / Data Error	0	0	0											0	0%	0	0%
Exposure	0	0	0											0	0%	0	0%
Equipment Malfunction	0	0	0											0	0%	0	0%
ACS Expired	0	0	0											0	0%	0	0%
Total:	0	0	0											0	0%	0	0%
Summary Metrics																	
Daily Ave Vehicle Passes	0	0	9,663											9,663		9,744	
Ave Issued Speed	0	0	31											31		40	
Ave Issued Red Seconds	0	0	0.4											0		4.9	
Citation / Violation Iss Rate	0%	0%	57%											57%		62%	
Controllable Iss Rate	0%	0%	100%											100%		100%	



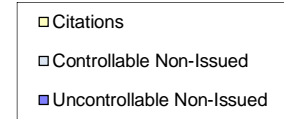
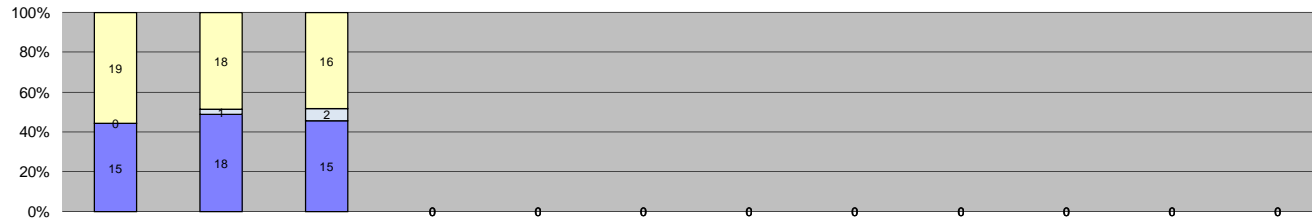
**City of West Hollywood
Approach Summary Report
Location 3121: N/B Crescent Heights @ Fountain (GLD-4 Camera System)**



Events	Jan-13	Feb-13	Mar-13	Apr-13	May-13	Jun-13	Jul-13	Aug-13	Sep-13	Oct-13	Nov-13	Dec-13	Year to Date Average		2012 Average		
													Quantity	%	Quantity	%	
Non-Violations	18	28	20											22	40%	21	21%
Violations	35	23	40											33	60%	76	79%
Total:	53	51	60											55	100%	96	100%
Violations																	
Uncontrollable Non-Issued	16	10	17											14	44%	32	42%
Controllable Non-Issued	0	0	0											0	0%	2	2%
Citations	19	13	23											18	56%	43	56%
Total:	35	23	40											33	100%	77	100%
Non-Violations																	
Rear Axle Violation	0	0	0											0	0%	1	5%
Emergency Vehicle	0	8	3											6	23%	3	12%
Right Turn	7	5	5											6	24%	7	32%
No Violation Occurred	11	15	12											13	53%	11	52%
Total:	18	28	20											24	100%	22	100%
Uncontrollable Non-Issued Violations																	
No Plate	10	3	12											8	50%	16	38%
Out of State Plate	0	1	1											1	6%	3	6%
Glare on Plate	0	0	0											0	0%	2	6%
Illegible Plate	0	1	0											1	6%	2	6%
Plate Obstructed	0	0	0											0	0%	2	4%
Windshield Glare	1	1	2											1	8%	5	12%
Driver Obstructed	0	0	0											0	0%	1	2%
Car Obstructed	0	2	0											2	12%	1	2%
No DMV Match Found	5	2	2											3	18%	6	14%
LASD Expired	0	0	0											0	0%	1	2%
LASD Return	0	0	0											0	0%	2	4%
Yellow Interval Not Met	0	0	0											0	0%	0	0%
Other	0	0	0											0	0%	1	2%
Total:	16	10	17											17	100%	42	100%
Controllable Non-Issued Violations																	
Framing of Plate	0	0	0											0	0%	0	0%
Focus / Clarity of Plate	0	0	0											0	0%	1	20%
Dark Interior	0	0	0											0	0%	0	0%
Framing of Driver	0	0	0											0	0%	0	0%
Focus / Clarity of Driver	0	0	0											0	0%	0	0%
Framing of Car	0	0	0											0	0%	0	0%
Operator / Data Error	0	0	0											0	0%	0	0%
Exposure	0	0	0											0	0%	0	0%
Equipment Malfunction	0	0	0											0	0%	1	20%
ACS Expired	0	0	0											0	0%	3	60%
Total:	0	0	0											0	0%	5	100%
Summary Metrics																	
Daily Ave Vehicle Passes	11,359	10,902	11,017											11,093		11,824	
Ave Issued Speed	34	36	37											36		37	
Ave Issued Red Seconds	3.9	5.5	5.3											5		1	
Citation / Violation Iss Rate	54%	57%	58%											56%		57%	
Controllable Iss Rate	100%	100%	100%											100%		99%	



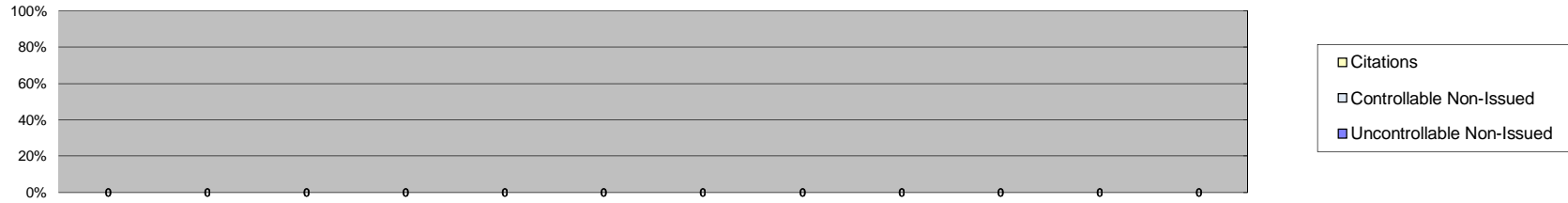
**City of West Hollywood
Approach Summary Report
Location 3122: S/B Crescent Heights @ Fountain (GLD-4 Camera System)**



Events	Jan-13	Feb-13	Mar-13	Apr-13	May-13	Jun-13	Jul-13	Aug-13	Sep-13	Oct-13	Nov-13	Dec-13	Year to Date Average		2012 Average		
													Quantity	%	Quantity	%	
Non-Violations	18	19	25											21	37%	32	29%
Violations	34	37	33											35	63%	80	71%
Total:	52	56	58											55	100%	113	100%
Violations																	
Uncontrollable Non-Issued	15	18	15											16	45%	28	35%
Controllable Non-Issued	0	1	2											2	4%	6	8%
Citations	19	18	16											18	50%	46	57%
Total:	34	37	33											35	100%	80	100%
Non-Violations																	
Rear Axle Violation	0	0	0											0	0%	1	3%
Emergency Vehicle	2	2	3											2	11%	3	8%
Right Turn	8	5	15											9	45%	16	48%
No Violation Occurred	8	12	7											9	44%	14	41%
Total:	18	19	25											21	100%	34	100%
Uncontrollable Non-Issued Violations																	
No Plate	8	8	5											7	39%	16	43%
Out of State Plate	0	1	1											1	6%	2	6%
Glare on Plate	0	1	0											1	6%	1	3%
Illegible Plate	0	0	1											1	6%	1	3%
Plate Obstructed	0	0	0											0	0%	1	3%
Windshield Glare	2	1	3											2	11%	3	8%
Driver Obstructed	0	0	0											0	0%	1	3%
Car Obstructed	0	0	0											0	0%	1	3%
No DMV Match Found	4	7	4											5	28%	6	16%
LASD Expired	0	0	0											0	0%	1	4%
LASD Return	1	0	1											1	6%	2	6%
Yellow Interval Not Met	0	0	0											0	0%	0	0%
Other	0	0	0											0	0%	1	3%
Total:	15	18	15											18	100%	36	100%
Controllable Non-Issued Violations																	
Framing of Plate	0	0	0											0	0%	0	0%
Focus / Clarity of Plate	0	0	0											0	0%	0	0%
Dark Interior	0	1	2											2	8%	3	10%
Framing of Driver	0	0	0											0	0%	0	0%
Focus / Clarity of Driver	0	0	0											0	0%	0	0%
Framing of Car	0	0	0											0	0%	0	0%
Operator / Data Error	0	0	0											0	0%	20	61%
Exposure	0	0	0											0	0%	0	0%
Equipment Malfunction	0	0	0											0	0%	4	11%
ACS Expired	0	0	0											0	0%	6	18%
Total:	0	1	2											2	8%	33	100%
Summary Metrics																	
Daily Ave Vehicle Passes	11,782	11,484	11,331											11,532		12,445	
Ave Issued Speed	38	36	36											37		38	
Ave Issued Red Seconds	3.2	0.4	0.4											1		0.9	
Citation / Violation Iss Rate	56%	49%	48%											51%		56%	
Controllable Iss Rate	100%	95%	89%											95%		88%	



**City of West Hollywood
Approach Summary Report
Location 3123: E/B Fountain @ Crescent Heights (GLD-4 Camera System)**

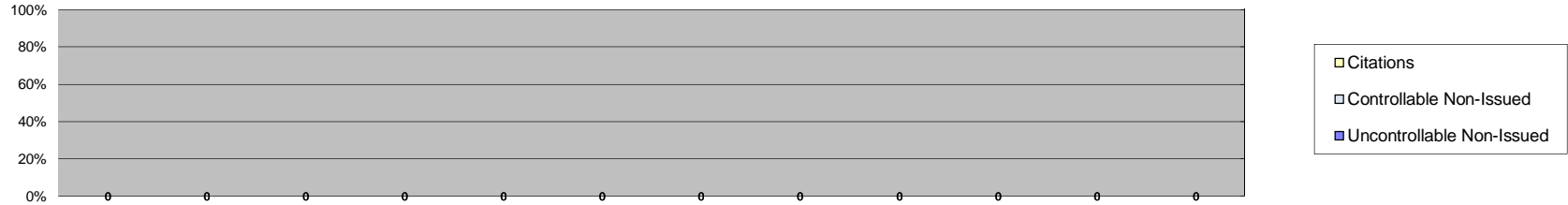


Events	Jan-13	Feb-13	Mar-13	Apr-13	May-13	Jun-13	Jul-13	Aug-13	Sep-13	Oct-13	Nov-13	Dec-13	Year to Date Average		2012 Average		
													Quantity	%	Quantity	%	
Non-Violations	0	0	0											0	0	15	47%
Violations	0	0	0											0	0	18	53%
Total:	0	0	0											0	0%	33	100%
Violations																	
Uncontrollable Non-Issued	0	0	0											0	0	8	41%
Controllable Non-Issued	0	0	0											0	0	2	11%
Citations	0	0	0											0	0	9	49%
Total:	0	0	0											0	0%	19	100%
Non-Violations																	
Rear Axle Violation	0	0	0											0	0	0	0%
Emergency Vehicle	0	0	0											0	0	2	9%
Right Turn	0	0	0											0	0	7	44%
No Violation Occurred	0	0	0											0	0	7	46%
Total:	0	0	0											0	0%	16	100%
Uncontrollable Non-Issued Violations																	
No Plate	0	0	0											0	0	5	59%
Out of State Plate	0	0	0											0	0	1	12%
Glare on Plate	0	0	0											0	0	0	0%
Illegible Plate	0	0	0											0	0	0	0%
Plate Obstructed	0	0	0											0	0	0	0%
Windshield Glare	0	0	0											0	0	0	0%
Driver Obstructed	0	0	0											0	0	0	0%
Car Obstructed	0	0	0											0	0	0	0%
No DMV Match Found	0	0	0											0	0	2	18%
LASD Expired	0	0	0											0	0	0	0%
LASD Return	0	0	0											0	0	1	12%
Yellow Interval Not Met	0	0	0											0	0	0	0%
Other	0	0	0											0	0	0	0%
Total:	0	0	0											0	0%	9	100%
Controllable Non-Issued Violations																	
Framing of Plate	0	0	0											0	0	0	0%
Focus / Clarity of Plate	0	0	0											0	0	1	50%
Dark Interior	0	0	0											0	0	0	0%
Framing of Driver	0	0	0											0	0	0	0%
Focus / Clarity of Driver	0	0	0											0	0	0	0%
Framing of Car	0	0	0											0	0	1	50%
Operator / Data Error	0	0	0											0	0	0	0%
Exposure	0	0	0											0	0	0	0%
Equipment Malfunction	0	0	0											0	0	0	0%
ACS Expired	0	0	0											0	0	0	0%
Total:	0	0	0											0	0%	2	100%
Summary Metrics																	
Daily Ave Vehicle Passes	0	0	0											0		11,807	
Ave Issued Speed	0	0	0											0		37	
Ave Issued Red Seconds	0	0	0											0		0.9	
Citation / Violation Iss Rate	0%	0%	0%											0%		51%	
Controllable Iss Rate	0%	0%	0%											0%		90%	



**City of West Hollywood
Approach Summary Report**

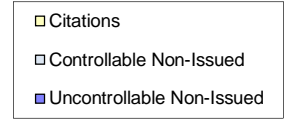
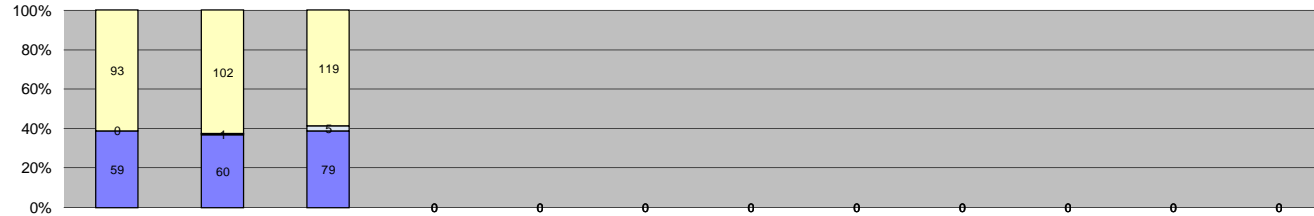
Location 3124: W/B Fountain @ Crescent Heights (GLD-4 Camera System)



Events	Jan-13	Feb-13	Mar-13	Apr-13	May-13	Jun-13	Jul-13	Aug-13	Sep-13	Oct-13	Nov-13	Dec-13	Year to Date Average		2012 Average		
													Quantity	%	Quantity	%	
Non-Violations	0	0	0											0	0	21	75%
Violations	0	0	0											0	0	7	25%
Total:	0	0	0											0	0%	28	100%
Violations																	
Uncontrollable Non-Issued	0	0	0											0	0	4	40%
Controllable Non-Issued	0	0	0											0	0	0	0%
Citations	0	0	0											0	0	6	60%
Total:	0	0	0											0	0%	10	100%
Non-Violations																	
Rear Axle Violation	0	0	0											0	0	1	5%
Emergency Vehicle	0	0	0											0	0	2	10%
Right Turn	0	0	0											0	0	14	67%
No Violation Occurred	0	0	0											0	0	4	19%
Total:	0	0	0											0	0%	21	100%
Uncontrollable Non-Issued Violations																	
No Plate	0	0	0											0	0	1	11%
Out of State Plate	0	0	0											0	0	2	17%
Glare on Plate	0	0	0											0	0	2	13%
Illegible Plate	0	0	0											0	0	2	17%
Plate Obstructed	0	0	0											0	0	0	0%
Windshield Glare	0	0	0											0	0	0	0%
Driver Obstructed	0	0	0											0	0	0	0%
Car Obstructed	0	0	0											0	0	0	0%
No DMV Match Found	0	0	0											0	0	2	17%
LASD Expired	0	0	0											0	0	1	8%
LASD Return	0	0	0											0	0	0	0%
Yellow Interval Not Met	0	0	0											0	0	0	0%
Other	0	0	0											0	0	2	17%
Total:	0	0	0											0	0%	12	100%
Controllable Non-Issued Violations																	
Framing of Plate	0	0	0											0	0	0	0%
Focus / Clarity of Plate	0	0	0											0	0	0	0%
Dark Interior	0	0	0											0	0	0	0%
Framing of Driver	0	0	0											0	0	0	0%
Focus / Clarity of Driver	0	0	0											0	0	0	0%
Framing of Car	0	0	0											0	0	0	0%
Operator / Data Error	0	0	0											0	0	0	0%
Exposure	0	0	0											0	0	0	0%
Equipment Malfunction	0	0	0											0	0	0	0%
ACS Expired	0	0	0											0	0	0	0%
Total:	0	0	0											0	0%	0	0%
Summary Metrics																	
Daily Ave Vehicle Passes	0	0	0											0		9,034	
Ave Issued Speed	0	0	0											0		30	
Ave Issued Red Seconds	0	0	0											0		1.8	
Citation / Violation Iss Rate	0%	0%	0%											0%		41%	
Controllable Iss Rate	0%	0%	0%											0%		100%	



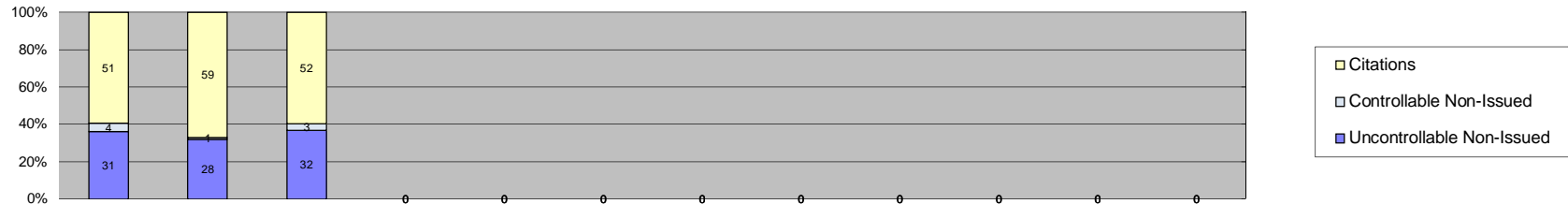
**City of West Hollywood
Approach Summary Report
Location 3131: N/B La Cienega @ Melrose (GLD-4 Camera System)**



Events	Jan-13	Feb-13	Mar-13	Apr-13	May-13	Jun-13	Jul-13	Aug-13	Sep-13	Oct-13	Nov-13	Dec-13	Year to Date Average		2012 Average		
													Quantity	%	Quantity	%	
Non-Violations	25	21	24											23	12%	27	17%
Violations	152	163	203											173	88%	132	83%
Total:	177	184	227											196	100%	159	100%
Violations																	
Uncontrollable Non-Issued	59	60	79											66	38%	45	34%
Controllable Non-Issued	0	1	5											3	2%	2	2%
Citations	93	102	119											105	60%	86	65%
Total:	152	163	203											174	100%	133	100%
Non-Violations																	
Rear Axle Violation	0	1	0											1	4%	1	4%
Emergency Vehicle	2	1	7											3	14%	4	13%
Right Turn	14	9	7											10	42%	11	39%
No Violation Occurred	9	10	10											10	40%	12	44%
Total:	25	21	24											24	100%	28	100%
Uncontrollable Non-Issued Violations																	
No Plate	33	35	38											35	50%	23	45%
Out of State Plate	0	2	2											2	3%	3	5%
Glare on Plate	0	0	0											0	0%	0	0%
Illegible Plate	1	0	0											1	1%	1	2%
Plate Obstructed	2	2	0											2	3%	2	3%
Windshield Glare	3	6	16											8	12%	3	7%
Driver Obstructed	1	0	1											1	1%	1	2%
Car Obstructed	1	0	6											4	5%	1	3%
No DMV Match Found	14	11	14											13	19%	10	20%
LASD Expired	0	0	0											0	0%	3	5%
LASD Return	3	4	2											3	4%	3	6%
Yellow Interval Not Met	0	0	0											0	0%	0	0%
Other	1	0	0											1	1%	1	2%
Total:	59	60	79											70	100%	51	100%
Controllable Non-Issued Violations																	
Framing of Plate	0	0	0											0	0%	0	0%
Focus / Clarity of Plate	0	0	0											0	0%	0	0%
Dark Interior	0	1	4											3	4%	2	27%
Framing of Driver	0	0	0											0	0%	0	0%
Focus / Clarity of Driver	0	0	1											1	1%	0	0%
Framing of Car	0	0	0											0	0%	0	0%
Operator / Data Error	0	0	0											0	0%	2	36%
Exposure	0	0	0											0	0%	0	0%
Equipment Malfunction	0	0	0											0	0%	1	18%
ACS Expired	0	0	0											0	0%	1	18%
Total:	0	1	5											4	5%	6	100%
Summary Metrics																	
Daily Ave Vehicle Passes	11,427	11,163	11,114											11,235		12,501	
Ave Issued Speed	39	38	39											38		38	
Ave Issued Red Seconds	0.8	0.7	0.5											1		0.7	
Citation / Violation Iss Rate	61%	63%	59%											61%		66%	
Controllable Iss Rate	100%	99%	96%											98%		99%	



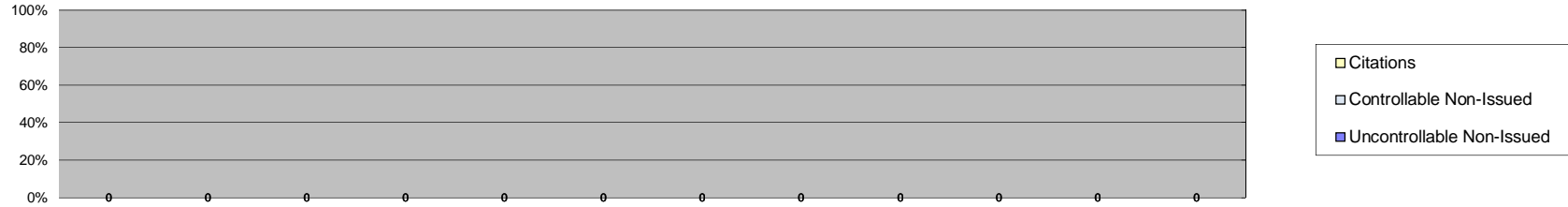
**City of West Hollywood
Approach Summary Report
Location 3132: S/B La Cienega @ Melrose (GLD-4 Camera System)**



Events	Jan-13	Feb-13	Mar-13	Apr-13	May-13	Jun-13	Jul-13	Aug-13	Sep-13	Oct-13	Nov-13	Dec-13	Year to Date Average		2012 Average		
													Quantity	%	Quantity	%	
Non-Violations	105	88	115											103	54%	104	56%
Violations	86	88	87											87	46%	83	44%
Total:	191	176	202											190	100%	186	100%
Violations																	
Uncontrollable Non-Issued	31	28	32											30	35%	31	37%
Controllable Non-Issued	4	1	3											3	3%	3	4%
Citations	51	59	52											54	62%	50	60%
Total:	86	88	87											87	100%	84	100%
Non-Violations																	
Rear Axle Violation	0	0	0											0	0%	1	1%
Emergency Vehicle	9	11	5											8	8%	13	12%
Right Turn	80	64	93											79	77%	70	66%
No Violation Occurred	16	13	17											15	15%	22	21%
Total:	105	88	115											103	100%	105	100%
Uncontrollable Non-Issued Violations																	
No Plate	12	15	21											16	44%	15	33%
Out of State Plate	0	0	1											1	3%	3	6%
Glare on Plate	0	0	0											0	0%	2	5%
Illegible Plate	2	1	0											2	4%	2	3%
Plate Obstructed	2	0	1											2	4%	2	4%
Windshield Glare	0	0	4											4	11%	3	6%
Driver Obstructed	0	0	1											1	3%	2	3%
Car Obstructed	2	0	1											2	4%	2	3%
No DMV Match Found	12	11	3											9	24%	7	16%
LASD Expired	0	0	0											0	0%	5	11%
LASD Return	1	1	0											1	3%	2	4%
Yellow Interval Not Met	0	0	0											0	0%	0	0%
Other	0	0	0											0	0%	3	6%
Total:	31	28	32											36	100%	44	100%
Controllable Non-Issued Violations																	
Framing of Plate	0	0	0											0	0%	0	0%
Focus / Clarity of Plate	0	0	0											0	0%	0	0%
Dark Interior	3	1	3											2	70%	1	7%
Framing of Driver	0	0	0											0	0%	0	0%
Focus / Clarity of Driver	1	0	0											1	30%	0	0%
Framing of Car	0	0	0											0	0%	0	0%
Operator / Data Error	0	0	0											0	0%	11	76%
Exposure	0	0	0											0	0%	0	0%
Equipment Malfunction	0	0	0											0	0%	1	7%
ACS Expired	0	0	0											0	0%	2	10%
Total:	4	1	3											3	100%	15	100%
Summary Metrics																	
Daily Ave Vehicle Passes	13,073	13,059	12,952											13,028		14,097	
Ave Issued Speed	39	40	37											39		40	
Ave Issued Red Seconds	0.4	0.4	0.4											0		0.8	
Citation / Violation Iss Rate	59%	67%	60%											62%		61%	
Controllable Iss Rate	93%	98%	95%											95%		97%	



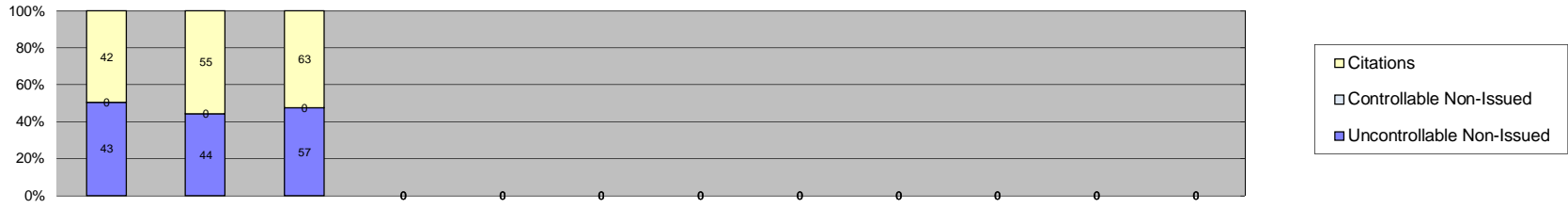
**City of West Hollywood
Approach Summary Report
Location 3133: E/B Melrose @ La Cienega (GLD-4 Camera System)**



Events	Jan-13	Feb-13	Mar-13	Apr-13	May-13	Jun-13	Jul-13	Aug-13	Sep-13	Oct-13	Nov-13	Dec-13	Year to Date Average		2012 Average		
													Quantity	%	Quantity	%	
Non-Violations	0	0	0											0	0	29	41%
Violations	0	0	0											0	0	42	59%
Total:	0	0	0											0	0%	71	100%
Violations																	
Uncontrollable Non-Issued	0	0	0											0	0	34	81%
Controllable Non-Issued	0	0	0											0	0	1	2%
Citations	0	0	0											0	0	7	17%
Total:	0	0	0											0	0%	42	100%
Non-Violations																	
Rear Axle Violation	0	0	0											0	0	1	3%
Emergency Vehicle	0	0	0											0	0	1	3%
Right Turn	0	0	0											0	0	13	45%
No Violation Occurred	0	0	0											0	0	14	48%
Total:	0	0	0											0	0%	29	100%
Uncontrollable Non-Issued Violations																	
No Plate	0	0	0											0	0	7	21%
Out of State Plate	0	0	0											0	0	2	6%
Glare on Plate	0	0	0											0	0	1	3%
Illegible Plate	0	0	0											0	0	14	41%
Plate Obstructed	0	0	0											0	0	2	6%
Windshield Glare	0	0	0											0	0	6	18%
Driver Obstructed	0	0	0											0	0	1	3%
Car Obstructed	0	0	0											0	0	0	0%
No DMV Match Found	0	0	0											0	0	1	3%
LASD Expired	0	0	0											0	0	0	0%
LASD Return	0	0	0											0	0	0	0%
Yellow Interval Not Met	0	0	0											0	0	0	0%
Other	0	0	0											0	0	0	0%
Total:	0	0	0											0	0%	34	100%
Controllable Non-Issued Violations																	
Framing of Plate	0	0	0											0	0	1	100%
Focus / Clarity of Plate	0	0	0											0	0	0	0%
Dark Interior	0	0	0											0	0	0	0%
Framing of Driver	0	0	0											0	0	0	0%
Focus / Clarity of Driver	0	0	0											0	0	0	0%
Framing of Car	0	0	0											0	0	0	0%
Operator / Data Error	0	0	0											0	0	0	0%
Exposure	0	0	0											0	0	0	0%
Equipment Malfunction	0	0	0											0	0	0	0%
ACS Expired	0	0	0											0	0	0	0%
Total:	0	0	0											0	0%	1	100%
Summary Metrics																	
Daily Ave Vehicle Passes	0	0	0											0		7,980	
Ave Issued Speed	0	0	0											0		29	
Ave Issued Red Seconds	0	0	0											0		0.4	
Citation / Violation Iss Rate	0%	0%	0%											0%		17%	
Controllable Iss Rate	0%	0%	0%											0%		88%	



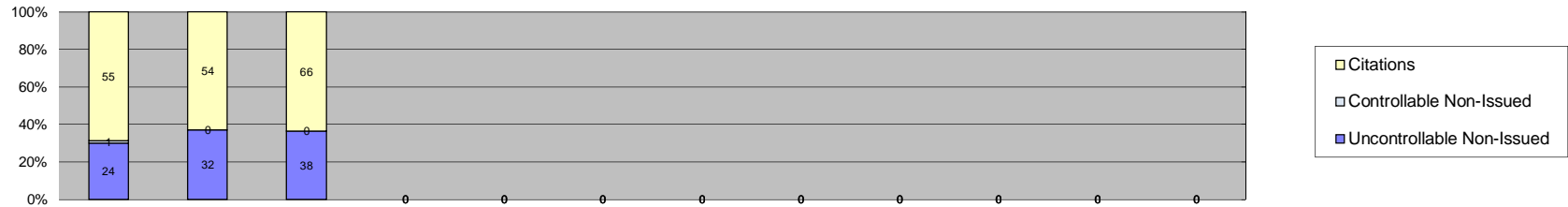
**City of West Hollywood
Approach Summary Report
Location 3141: N/B La Brea @ Fountain (GLD-4 Camera System)**



Events	Jan-13	Feb-13	Mar-13	Apr-13	May-13	Jun-13	Jul-13	Aug-13	Sep-13	Oct-13	Nov-13	Dec-13	Year to Date Average		2012 Average		
													Quantity	%	Quantity	%	
Non-Violations	355	356	391											367	78%	442	62%
Violations	85	99	120											101	22%	266	38%
Total:	440	455	511											469	100%	709	100%
Violations																	
Uncontrollable Non-Issued	43	44	57											48	47%	104	38%
Controllable Non-Issued	0	0	0											0	0%	10	4%
Citations	42	55	63											53	53%	156	58%
Total:	85	99	120											101	100%	271	100%
Non-Violations																	
Rear Axle Violation	0	1	0											1	0%	3	1%
Emergency Vehicle	12	1	3											5	1%	7	1%
Right Turn	76	86	96											86	23%	120	27%
No Violation Occurred	267	268	292											276	75%	314	71%
Total:	355	356	391											368	100%	444	100%
Uncontrollable Non-Issued Violations																	
No Plate	19	21	26											22	43%	44	40%
Out of State Plate	1	4	1											2	4%	7	7%
Glare on Plate	0	0	0											0	0%	1	1%
Illegible Plate	2	0	1											2	3%	1	1%
Plate Obstructed	0	1	3											2	4%	3	3%
Windshield Glare	12	4	16											11	21%	17	16%
Driver Obstructed	1	0	2											2	3%	2	1%
Car Obstructed	2	1	1											1	3%	4	3%
No DMV Match Found	5	12	6											8	15%	22	20%
LASD Expired	0	0	0											0	0%	2	2%
LASD Return	1	0	1											1	2%	5	4%
Yellow Interval Not Met	0	0	0											0	0%	0	0%
Other	0	1	0											1	2%	2	2%
Total:	43	44	57											51	100%	110	100%
Controllable Non-Issued Violations																	
Framing of Plate	0	0	0											0	0%	0	0%
Focus / Clarity of Plate	0	0	0											0	0%	0	0%
Dark Interior	0	0	0											0	0%	3	17%
Framing of Driver	0	0	0											0	0%	0	0%
Focus / Clarity of Driver	0	0	0											0	0%	2	9%
Framing of Car	0	0	0											0	0%	0	0%
Operator / Data Error	0	0	0											0	0%	0	0%
Exposure	0	0	0											0	0%	0	0%
Equipment Malfunction	0	0	0											0	0%	11	68%
ACS Expired	0	0	0											0	0%	1	6%
Total:	0	0	0											0	0%	16	100%
Summary Metrics																	
Daily Ave Vehicle Passes	15,008	15,048	14,700											14,919		15,554	
Ave Issued Speed	28	32	32											30		29	
Ave Issued Red Seconds	0.5	0.7	0.6											1		0.6	
Citation / Violation Iss Rate	49%	56%	53%											52%		58%	
Controllable Iss Rate	100%	100%	100%											100%		97%	



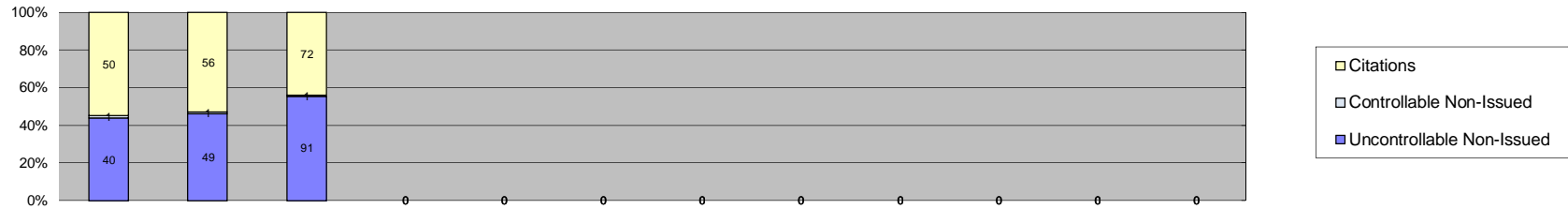
**City of West Hollywood
Approach Summary Report
Location 3142: S/B La Brea @ Fountain (GLD-4 Camera System)**



Events	Jan-13	Feb-13	Mar-13	Apr-13	May-13	Jun-13	Jul-13	Aug-13	Sep-13	Oct-13	Nov-13	Dec-13	Year to Date Average		2012 Average		
													Quantity	%	Quantity	%	
Non-Violations	426	436	506											456	84%	572	73%
Violations	80	86	104											90	16%	209	27%
Total:	506	522	610											546	100%	782	100%
Violations																	
Uncontrollable Non-Issued	24	32	38											31	35%	82	39%
Controllable Non-Issued	1	0	0											1	1%	4	2%
Citations	55	54	66											58	64%	124	59%
Total:	80	86	104											91	100%	210	100%
Non-Violations																	
Rear Axle Violation	0	2	0											2	0%	4	1%
Emergency Vehicle	8	10	18											12	3%	10	2%
Right Turn	213	208	254											225	49%	292	51%
No Violation Occurred	205	216	234											218	48%	269	47%
Total:	426	436	506											457	100%	574	100%
Uncontrollable Non-Issued Violations																	
No Plate	13	13	20											15	43%	39	44%
Out of State Plate	0	2	2											2	6%	7	7%
Glare on Plate	0	0	0											0	0%	1	2%
Illegible Plate	0	0	0											0	0%	2	2%
Plate Obstructed	0	1	1											1	3%	2	2%
Windshield Glare	3	4	8											5	14%	9	10%
Driver Obstructed	0	0	1											1	3%	3	3%
Car Obstructed	2	4	0											3	8%	4	4%
No DMV Match Found	6	6	6											6	17%	16	19%
LASD Expired	0	0	0											0	0%	2	2%
LASD Return	0	2	0											2	6%	4	4%
Yellow Interval Not Met	0	0	0											0	0%	0	0%
Other	0	0	0											0	0%	1	1%
Total:	24	32	38											35	100%	88	100%
Controllable Non-Issued Violations																	
Framing of Plate	0	0	0											0	0%	1	9%
Focus / Clarity of Plate	0	0	0											0	0%	1	9%
Dark Interior	1	0	0											1	100%	3	22%
Framing of Driver	0	0	0											0	0%	0	0%
Focus / Clarity of Driver	0	0	0											0	0%	1	9%
Framing of Car	0	0	0											0	0%	1	9%
Operator / Data Error	0	0	0											0	0%	0	0%
Exposure	0	0	0											0	0%	2	13%
Equipment Malfunction	0	0	0											0	0%	2	17%
ACS Expired	0	0	0											0	0%	2	13%
Total:	1	0	0											1	100%	12	100%
Summary Metrics																	
Daily Ave Vehicle Passes	16,299	15,916	16,124											16,113		17,235	
Ave Issued Speed	34	35	31											33		32	
Ave Issued Red Seconds	0.6	0.5	0.7											1		0.6	
Citation / Violation Iss Rate	69%	63%	63%											65%		58%	
Controllable Iss Rate	98%	100%	100%											99%		97%	



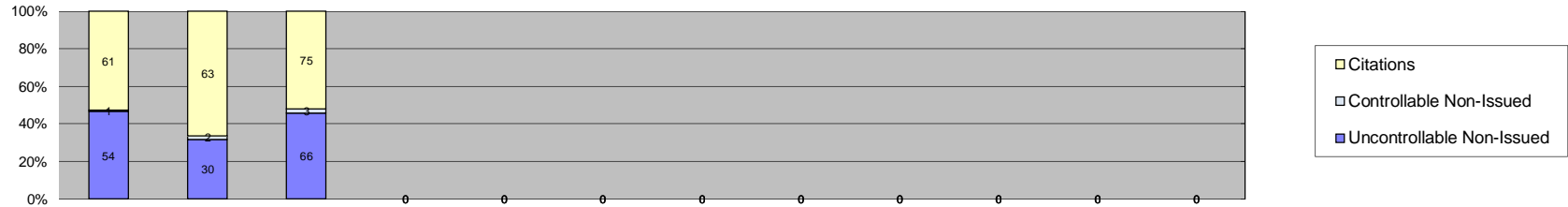
**City of West Hollywood
Approach Summary Report
Location 3143: E/B Sunset @ La Cienega (GLD-4 Camera System)**



Events	Jan-13	Feb-13	Mar-13	Apr-13	May-13	Jun-13	Jul-13	Aug-13	Sep-13	Oct-13	Nov-13	Dec-13	Year to Date Average		2012 Average		
													Quantity	%	Quantity	%	
Non-Violations	794	706	752											751	86%	619	87%
Violations	91	106	164											120	14%	92	13%
Total:	885	812	916											871	100%	711	100%
Violations																	
Uncontrollable Non-Issued	40	49	91											60	50%	44	46%
Controllable Non-Issued	1	1	1											1	1%	2	2%
Citations	50	56	72											59	49%	48	52%
Total:	91	106	164											120	100%	94	100%
Non-Violations																	
Rear Axle Violation	0	0	0											0	0%	1	0%
Emergency Vehicle	4	1	8											4	1%	7	1%
Right Turn	342	323	352											339	45%	300	48%
No Violation Occurred	448	382	392											407	54%	312	50%
Total:	794	706	752											751	100%	620	100%
Uncontrollable Non-Issued Violations																	
No Plate	17	28	40											28	46%	17	33%
Out of State Plate	0	0	0											0	0%	2	4%
Glare on Plate	0	0	0											0	0%	1	2%
Illegible Plate	3	1	1											2	3%	2	3%
Plate Obstructed	0	0	2											2	3%	2	3%
Windshield Glare	8	8	27											14	23%	6	12%
Driver Obstructed	0	0	0											0	0%	1	2%
Car Obstructed	3	2	5											3	5%	3	6%
No DMV Match Found	5	6	11											7	12%	6	12%
LASD Expired	0	0	0											0	0%	3	5%
LASD Return	4	4	5											4	7%	4	8%
Yellow Interval Not Met	0	0	0											0	0%	4	7%
Other	0	0	0											0	0%	1	2%
Total:	40	49	91											61	100%	52	100%
Controllable Non-Issued Violations																	
Framing of Plate	0	0	0											0	0%	0	0%
Focus / Clarity of Plate	0	0	0											0	0%	1	20%
Dark Interior	1	1	1											1	100%	2	40%
Framing of Driver	0	0	0											0	0%	0	0%
Focus / Clarity of Driver	0	0	0											0	0%	0	0%
Framing of Car	0	0	0											0	0%	0	0%
Operator / Data Error	0	0	0											0	0%	0	0%
Exposure	0	0	0											0	0%	0	0%
Equipment Malfunction	0	0	0											0	0%	1	20%
ACS Expired	0	0	0											0	0%	1	20%
Total:	1	1	1											1	100%	5	100%
Summary Metrics																	
Daily Ave Vehicle Passes	17,807	17,681	17,737											17,742		18,561	
Ave Issued Speed	29	30	29											29		29	
Ave Issued Red Seconds	1.5	1.5	1.9											2		0.8	
Citation / Violation Iss Rate	55%	53%	44%											51%		52%	
Controllable Iss Rate	98%	98%	99%											98%		99%	



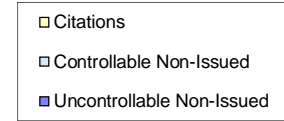
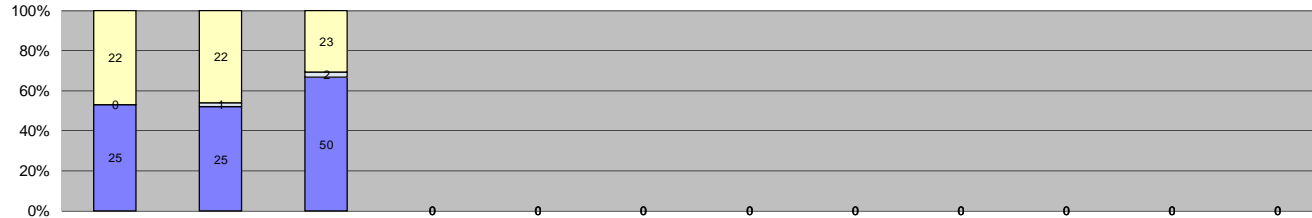
**City of West Hollywood
Approach Summary Report
Location 3144: W/B Sunset @ La Cienega (GLD-4 Camera System)**



Events	Jan-13	Feb-13	Mar-13	Apr-13	May-13	Jun-13	Jul-13	Aug-13	Sep-13	Oct-13	Nov-13	Dec-13	Year to Date Average		2012 Average		
													Quantity	%	Quantity	%	
Non-Violations	35	34	35											35	23%	38	23%
Violations	116	95	144											118	77%	126	77%
Total:	151	129	179											153	100%	165	100%
Violations																	
Uncontrollable Non-Issued	54	30	66											50	42%	58	46%
Controllable Non-Issued	1	2	3											2	2%	3	2%
Citations	61	63	75											66	56%	66	52%
Total:	116	95	144											118	100%	127	100%
Non-Violations																	
Rear Axle Violation	1	2	3											2	6%	2	4%
Emergency Vehicle	4	3	4											4	11%	8	21%
Right Turn	4	12	12											9	27%	8	20%
No Violation Occurred	26	17	16											20	57%	21	54%
Total:	35	34	35											35	100%	38	100%
Uncontrollable Non-Issued Violations																	
No Plate	25	12	31											23	43%	21	29%
Out of State Plate	0	2	1											2	3%	2	3%
Glare on Plate	1	0	0											1	2%	2	3%
Illegible Plate	5	2	6											4	8%	2	3%
Plate Obstructed	3	0	4											4	7%	2	3%
Windshield Glare	2	1	10											4	8%	9	13%
Driver Obstructed	1	1	0											1	2%	1	2%
Car Obstructed	1	6	8											5	9%	4	6%
No DMV Match Found	12	5	4											7	13%	8	12%
LASD Expired	0	0	0											0	0%	4	6%
LASD Return	3	1	2											2	4%	4	6%
Yellow Interval Not Met	0	0	0											0	0%	9	12%
Other	1	0	0											1	2%	1	1%
Total:	54	30	66											53	100%	70	100%
Controllable Non-Issued Violations																	
Framing of Plate	0	1	0											1	30%	1	12%
Focus / Clarity of Plate	0	0	0											0	0%	1	12%
Dark Interior	1	1	2											1	40%	1	13%
Framing of Driver	0	0	0											0	0%	1	16%
Focus / Clarity of Driver	0	0	0											0	0%	0	0%
Framing of Car	0	0	1											1	30%	2	24%
Operator / Data Error	0	0	0											0	0%	1	12%
Exposure	0	0	0											0	0%	0	0%
Equipment Malfunction	0	0	0											0	0%	0	0%
ACS Expired	0	0	0											0	0%	1	12%
Total:	1	2	3											3	100%	8	100%
Summary Metrics																	
Daily Ave Vehicle Passes	16,956	16,709	16,485											16,717		17,960	
Ave Issued Speed	32	33	31											32		31	
Ave Issued Red Seconds	1.8	0.5	1.0											1		0.9	
Citation / Violation Iss Rate	53%	66%	52%											57%		53%	
Controllable Iss Rate	98%	97%	96%											97%		96%	



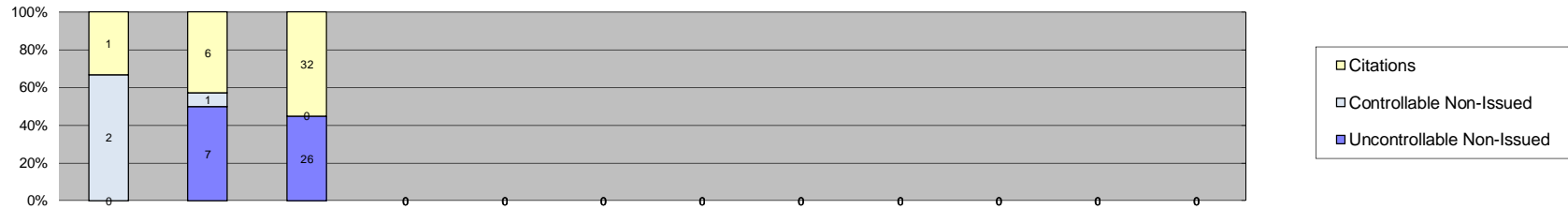
**City of West Hollywood
Approach Summary Report
Location 3151: N/B Fairfax @ Santa Monica (GLD-4 Camera System)**



Events	Jan-13	Feb-13	Mar-13	Apr-13	May-13	Jun-13	Jul-13	Aug-13	Sep-13	Oct-13	Nov-13	Dec-13	Year to Date Average		2012 Average		
													Quantity	%	Quantity	%	
Non-Violations	8	16	8											11	16%	11	16%
Violations	47	48	75											57	84%	60	84%
Total:	55	64	83											67	100%	71	100%
Violations																	
Uncontrollable Non-Issued	25	25	50											33	58%	29	48%
Controllable Non-Issued	0	1	2											2	3%	1	2%
Citations	22	22	23											22	39%	30	50%
Total:	47	48	75											57	100%	60	100%
Non-Violations																	
Rear Axle Violation	1	3	0											2	17%	3	19%
Emergency Vehicle	0	1	1											1	9%	2	17%
Right Turn	0	0	0											0	0%	1	7%
No Violation Occurred	7	12	7											9	74%	8	58%
Total:	8	16	8											12	100%	14	100%
Uncontrollable Non-Issued Violations																	
No Plate	10	10	17											12	37%	12	33%
Out of State Plate	0	0	0											0	0%	3	9%
Glare on Plate	2	1	2											2	5%	2	5%
Illegible Plate	1	1	4											2	6%	1	3%
Plate Obstructed	2	2	2											2	6%	2	6%
Windshield Glare	3	2	12											6	17%	3	9%
Driver Obstructed	0	0	0											0	0%	1	3%
Car Obstructed	3	4	8											5	15%	3	9%
No DMV Match Found	4	4	4											4	12%	4	11%
LASD Expired	0	0	0											0	0%	1	4%
LASD Return	0	1	1											1	3%	2	4%
Yellow Interval Not Met	0	0	0											0	0%	0	0%
Other	0	0	0											0	0%	1	3%
Total:	25	25	50											34	100%	35	100%
Controllable Non-Issued Violations																	
Framing of Plate	0	0	0											0	0%	1	20%
Focus / Clarity of Plate	0	0	0											0	0%	1	20%
Dark Interior	0	0	2											2	6%	1	20%
Framing of Driver	0	0	0											0	0%	0	0%
Focus / Clarity of Driver	0	0	0											0	0%	0	0%
Framing of Car	0	0	0											0	0%	1	20%
Operator / Data Error	0	0	0											0	0%	0	0%
Exposure	0	0	0											0	0%	1	20%
Equipment Malfunction	0	1	0											1	3%	0	0%
ACS Expired	0	0	0											0	0%	0	0%
Total:	0	1	2											3	9%	5	100%
Summary Metrics																	
Daily Ave Vehicle Passes	9,847	9,465	9,663											9,659		10,961	
Ave Issued Speed	29	30	29											29		32	
Ave Issued Red Seconds	0.4	2.2	0.4											1		0.5	
Citation / Violation Iss Rate	47%	46%	31%											41%		49%	
Controllable Iss Rate	100%	96%	92%											96%		98%	



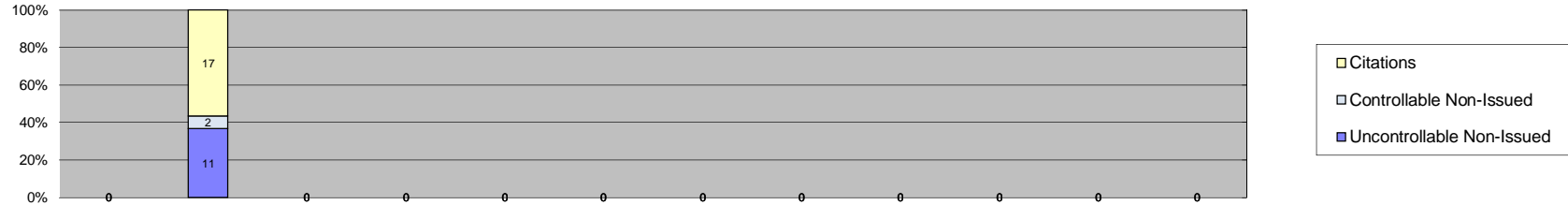
**City of West Hollywood
Approach Summary Report
Location 3152: S/B Fairfax @ Santa Monica (GLD-4 Camera System)**



Events	Jan-13	Feb-13	Mar-13	Apr-13	May-13	Jun-13	Jul-13	Aug-13	Sep-13	Oct-13	Nov-13	Dec-13	Year to Date Average		2012 Average		
													Quantity	%	Quantity	%	
Non-Violations	0	8	21											15	37%	22	33%
Violations	3	14	58											25	63%	44	67%
Total:	3	22	79											40	100%	67	100%
Violations																	
Uncontrollable Non-Issued	0	7	26											17	53%	21	45%
Controllable Non-Issued	2	1	0											2	5%	3	7%
Citations	1	6	32											13	42%	21	47%
Total:	3	14	58											31	100%	45	100%
Non-Violations																	
Rear Axle Violation	0	0	2											2	67%	1	6%
Emergency Vehicle	0	4	4											4	133%	7	30%
Right Turn	0	3	8											6	183%	4	18%
No Violation Occurred	0	1	7											4	133%	11	46%
Total:	0	8	21											16	517%	24	100%
Uncontrollable Non-Issued Violations																	
No Plate	0	0	12											12	400%	9	31%
Out of State Plate	0	0	0											0	0%	2	7%
Glare on Plate	0	0	0											0	0%	1	5%
Illegible Plate	0	1	2											2	50%	1	5%
Plate Obstructed	0	0	2											2	67%	2	6%
Windshield Glare	0	0	1											1	33%	2	7%
Driver Obstructed	0	1	1											1	33%	1	5%
Car Obstructed	0	0	3											3	100%	2	8%
No DMV Match Found	0	4	4											4	133%	3	10%
LASD Expired	0	0	0											0	0%	2	7%
LASD Return	0	1	1											1	33%	2	6%
Yellow Interval Not Met	0	0	0											0	0%	0	0%
Other	0	0	0											0	0%	1	4%
Total:	0	7	26											26	850%	28	100%
Controllable Non-Issued Violations																	
Framing of Plate	0	0	0											0	0%	0	0%
Focus / Clarity of Plate	0	0	0											0	0%	1	7%
Dark Interior	0	1	0											1	33%	3	17%
Framing of Driver	0	0	0											0	0%	0	0%
Focus / Clarity of Driver	0	0	0											0	0%	0	0%
Framing of Car	0	0	0											0	0%	2	10%
Operator / Data Error	0	0	0											0	0%	4	26%
Exposure	0	0	0											0	0%	0	0%
Equipment Malfunction	2	0	0											2	67%	5	33%
ACS Expired	0	0	0											0	0%	1	7%
Total:	2	1	0											3	100%	15	100%
Summary Metrics													Year to Date Average		2012 Average		
Daily Ave Vehicle Passes	9,626	9,273	9,825											9,574		10,464	
Ave Issued Speed	41	31	32											35		34	
Ave Issued Red Seconds	1.2	0.7	0.4											1		1.0	
Citation / Violation Iss Rate	33%	43%	55%											44%		49%	
Controllable Iss Rate	33%	86%	100%											73%		89%	



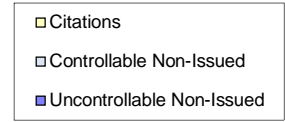
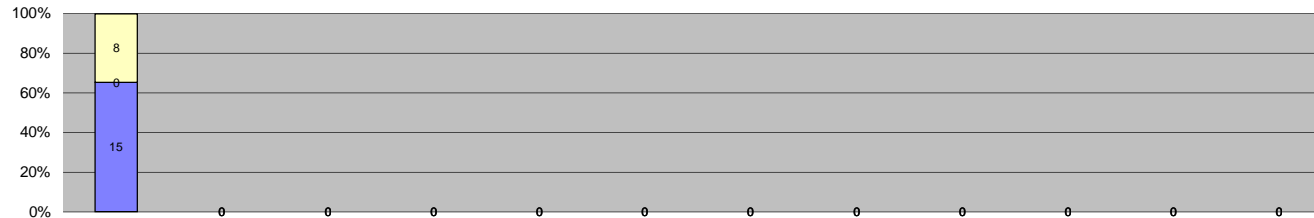
**City of West Hollywood
Approach Summary Report
Location 3153: E/B Santa Monica @ Fairfax (GLD-4 Camera System)**



Events	Jan-13	Feb-13	Mar-13	Apr-13	May-13	Jun-13	Jul-13	Aug-13	Sep-13	Oct-13	Nov-13	Dec-13	Year to Date Average		2012 Average		
													Quantity	%	Quantity	%	
Non-Violations	0	25	1											13	30%	24	41%
Violations	0	30	0											30	70%	35	59%
Total:	0	55	1											43	100%	59	100%
Violations																	
Uncontrollable Non-Issued	0	11	0											11	37%	27	47%
Controllable Non-Issued	0	2	0											2	7%	17	30%
Citations	0	17	0											17	57%	13	23%
Total:	0	30	0											30	100%	57	100%
Non-Violations																	
Rear Axle Violation	0	1	0											1	5%	1	4%
Emergency Vehicle	0	3	0											3	15%	5	18%
Right Turn	0	11	1											6	30%	11	37%
No Violation Occurred	0	10	0											10	50%	12	41%
Total:	0	25	1											20	100%	28	100%
Uncontrollable Non-Issued Violations																	
No Plate	0	8	0											8	73%	13	48%
Out of State Plate	0	1	0											1	9%	1	4%
Glare on Plate	0	0	0											0	0%	2	7%
Illegible Plate	0	0	0											0	0%	0	0%
Plate Obstructed	0	0	0											0	0%	3	11%
Windshield Glare	0	0	0											0	0%	1	4%
Driver Obstructed	0	0	0											0	0%	0	0%
Car Obstructed	0	0	0											0	0%	1	4%
No DMV Match Found	0	2	0											2	18%	5	19%
LASD Expired	0	0	0											0	0%	0	0%
LASD Return	0	0	0											0	0%	0	0%
Yellow Interval Not Met	0	0	0											0	0%	0	0%
Other	0	0	0											0	0%	1	4%
Total:	0	11	0											11	100%	27	100%
Controllable Non-Issued Violations																	
Framing of Plate	0	0	0											0	0%	0	0%
Focus / Clarity of Plate	0	0	0											0	0%	0	0%
Dark Interior	0	0	0											0	0%	0	0%
Framing of Driver	0	0	0											0	0%	0	0%
Focus / Clarity of Driver	0	0	0											0	0%	0	0%
Framing of Car	0	0	0											0	0%	0	0%
Operator / Data Error	0	2	0											2	100%	17	100%
Exposure	0	0	0											0	0%	0	0%
Equipment Malfunction	0	0	0											0	0%	0	0%
ACS Expired	0	0	0											0	0%	0	0%
Total:	0	2	0											2	100%	17	100%
Summary Metrics																	
Daily Ave Vehicle Passes	0	14,280	0											14,280		15,279	
Ave Issued Speed	0	34	0											34		26	
Ave Issued Red Seconds	0	0.4	0											0		0.5	
Citation / Violation Iss Rate	0%	57%	0%											57%		68%	
Controllable Iss Rate	0%	89%	0%											89%		79%	



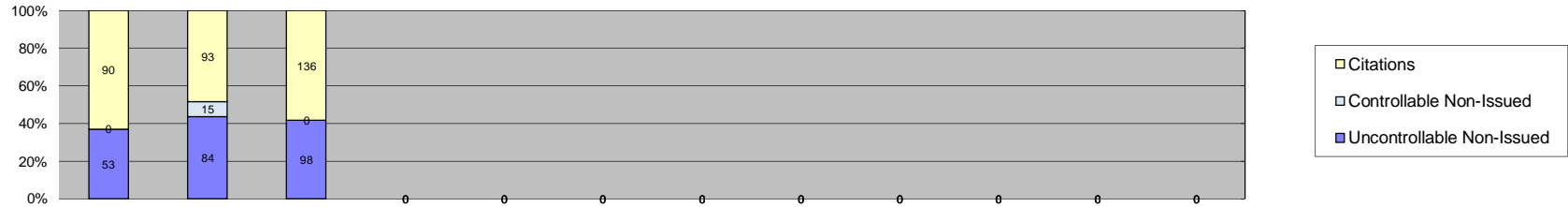
**City of West Hollywood
Approach Summary Report
Location 3154: W/B Santa Monica @ Fairfax (GLD-4 Camera System)**



Events	Jan-13	Feb-13	Mar-13	Apr-13	May-13	Jun-13	Jul-13	Aug-13	Sep-13	Oct-13	Nov-13	Dec-13	Year to Date Average		2012 Average		
													Quantity	%	Quantity	%	
Non-Violations	100	0	0											100	81%	84	82%
Violations	23	0	0											23	19%	18	18%
Total:	123	0	0											123	100%	102	100%
Violations																	
Uncontrollable Non-Issued	15	0	0											15	65%	13	72%
Controllable Non-Issued	0	0	0											0	0%	1	6%
Citations	8	0	0											8	35%	4	22%
Total:	23	0	0											23	100%	18	100%
Non-Violations																	
Rear Axle Violation	0	0	0											0	0%	0	0%
Emergency Vehicle	20	0	0											20	20%	18	21%
Right Turn	41	0	0											41	41%	41	49%
No Violation Occurred	39	0	0											39	39%	25	30%
Total:	100	0	0											100	100%	84	100%
Uncontrollable Non-Issued Violations																	
No Plate	4	0	0											4	27%	4	31%
Out of State Plate	1	0	0											1	7%	3	23%
Glare on Plate	1	0	0											1	7%	1	8%
Illegible Plate	6	0	0											6	40%	0	0%
Plate Obstructed	1	0	0											1	7%	1	8%
Windshield Glare	0	0	0											0	0%	1	8%
Driver Obstructed	0	0	0											0	0%	0	0%
Car Obstructed	0	0	0											0	0%	0	0%
No DMV Match Found	2	0	0											2	13%	1	8%
LASD Expired	0	0	0											0	0%	0	0%
LASD Return	0	0	0											0	0%	2	15%
Yellow Interval Not Met	0	0	0											0	0%	0	0%
Other	0	0	0											0	0%	0	0%
Total:	15	0	0											15	100%	13	100%
Controllable Non-Issued Violations																	
Framing of Plate	0	0	0											0	0%	0	0%
Focus / Clarity of Plate	0	0	0											0	0%	1	100%
Dark Interior	0	0	0											0	0%	0	0%
Framing of Driver	0	0	0											0	0%	0	0%
Focus / Clarity of Driver	0	0	0											0	0%	0	0%
Framing of Car	0	0	0											0	0%	0	0%
Operator / Data Error	0	0	0											0	0%	0	0%
Exposure	0	0	0											0	0%	0	0%
Equipment Malfunction	0	0	0											0	0%	0	0%
ACS Expired	0	0	0											0	0%	0	0%
Total:	0	0	0											0	0%	1	100%
Summary Metrics																	
Daily Ave Vehicle Passes	14,039	0	0											14,039		14,550	
Ave Issued Speed	30	0	0											30		26	
Ave Issued Red Seconds	0.3	0	0											0		0.3	
Citation / Violation Iss Rate	35%	0%	0%											35%		22%	
Controllable Iss Rate	100%	0%	0%											100%		80%	



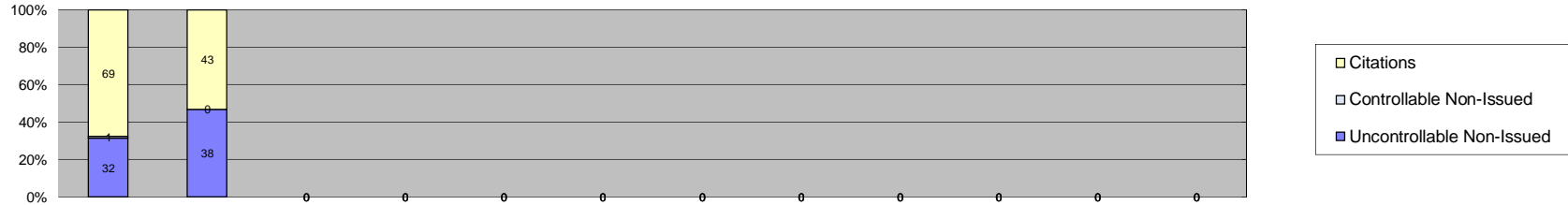
**City of West Hollywood
Approach Summary Report
Location 3161: N/B La Brea @ Santa Monica (GLD-4 Camera System)**



Events	Jan-13	Feb-13	Mar-13	Apr-13	May-13	Jun-13	Jul-13	Aug-13	Sep-13	Oct-13	Nov-13	Dec-13	Year to Date Average		2012 Average		
													Quantity	%	Quantity	%	
Non-Violations	130	126	146											134	41%	106	44%
Violations	143	192	234											190	59%	134	56%
Total:	273	318	380											324	100%	240	100%
Violations																	
Uncontrollable Non-Issued	53	84	98											78	39%	52	39%
Controllable Non-Issued	0	15	0											15	8%	1	1%
Citations	90	93	136											106	53%	81	60%
Total:	143	192	234											200	100%	134	100%
Non-Violations																	
Rear Axle Violation	2	4	1											2	2%	3	3%
Emergency Vehicle	6	7	0											7	5%	4	4%
Right Turn	65	53	80											66	48%	51	48%
No Violation Occurred	57	62	65											61	45%	48	45%
Total:	130	126	146											136	100%	106	100%
Uncontrollable Non-Issued Violations																	
No Plate	31	36	42											36	42%	24	38%
Out of State Plate	1	6	5											4	5%	5	7%
Glare on Plate	0	4	0											4	5%	2	3%
Illegible Plate	0	8	1											5	5%	1	2%
Plate Obstructed	2	2	2											2	2%	2	3%
Windshield Glare	0	8	18											13	15%	4	7%
Driver Obstructed	0	0	0											0	0%	1	2%
Car Obstructed	3	5	11											6	7%	2	3%
No DMV Match Found	16	15	19											17	19%	13	21%
LASD Expired	0	0	0											0	0%	7	10%
LASD Return	0	0	0											0	0%	2	3%
Yellow Interval Not Met	0	0	0											0	0%	0	0%
Other	0	0	0											0	0%	1	2%
Total:	53	84	98											87	100%	64	100%
Controllable Non-Issued Violations																	
Framing of Plate	0	0	0											0	0%	0	0%
Focus / Clarity of Plate	0	0	0											0	0%	0	0%
Dark Interior	0	0	0											0	0%	1	20%
Framing of Driver	0	0	0											0	0%	0	0%
Focus / Clarity of Driver	0	0	0											0	0%	0	0%
Framing of Car	0	14	0											14	16%	2	40%
Operator / Data Error	0	1	0											1	1%	0	0%
Exposure	0	0	0											0	0%	1	20%
Equipment Malfunction	0	0	0											0	0%	0	0%
ACS Expired	0	0	0											0	0%	1	20%
Total:	0	15	0											15	17%	5	100%
Summary Metrics													Year to Date Average		2012 Average		
Daily Ave Vehicle Passes	16,297	16,209	16,124											16,210		16,943	
Ave Issued Speed	31	29	28											29		32	
Ave Issued Red Seconds	0.4	0.5	0.4											0		0.4	
Citation / Violation Iss Rate	63%	48%	58%											56%		61%	
Controllable Iss Rate	100%	86%	100%											95%		99%	



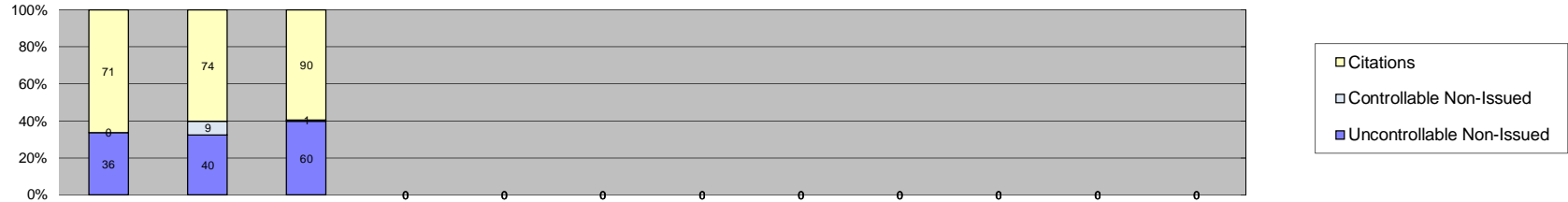
**City of West Hollywood
Approach Summary Report
Location 3162: S/B La Brea @ Santa Monica (GLD-4 Camera System)**



Events	Jan-13	Feb-13	Mar-13	Apr-13	May-13	Jun-13	Jul-13	Aug-13	Sep-13	Oct-13	Nov-13	Dec-13	Year to Date Average		2012 Average		
													Quantity	%	Quantity	%	
Non-Violations	304	190	0											247	73%	253	72%
Violations	102	81	0											92	27%	100	28%
Total:	406	271	0											339	100%	352	100%
Violations																	
Uncontrollable Non-Issued	32	38	0											35	38%	41	41%
Controllable Non-Issued	1	0	0											1	1%	1	1%
Citations	69	43	0											56	61%	57	57%
Total:	102	81	0											92	100%	100	100%
Non-Violations																	
Rear Axle Violation	0	0	0											0	0%	1	1%
Emergency Vehicle	5	0	0											5	2%	7	3%
Right Turn	42	46	0											44	18%	62	25%
No Violation Occurred	257	144	0											201	80%	182	72%
Total:	304	190	0											250	100%	253	100%
Uncontrollable Non-Issued Violations																	
No Plate	21	18	0											20	49%	19	37%
Out of State Plate	0	3	0											3	8%	3	6%
Glare on Plate	0	0	0											0	0%	1	2%
Illegible Plate	0	0	0											0	0%	1	2%
Plate Obstructed	0	3	0											3	8%	2	4%
Windshield Glare	0	2	0											2	5%	3	5%
Driver Obstructed	0	0	0											0	0%	1	2%
Car Obstructed	3	1	0											2	5%	2	5%
No DMV Match Found	7	8	0											8	19%	9	18%
LASD Expired	0	0	0											0	0%	5	9%
LASD Return	1	2	0											2	4%	3	5%
Yellow Interval Not Met	0	0	0											0	0%	0	0%
Other	0	1	0											1	3%	3	5%
Total:	32	38	0											40	100%	51	100%
Controllable Non-Issued Violations																	
Framing of Plate	0	0	0											0	0%	0	0%
Focus / Clarity of Plate	0	0	0											0	0%	1	14%
Dark Interior	1	0	0											1	100%	1	16%
Framing of Driver	0	0	0											0	0%	1	14%
Focus / Clarity of Driver	0	0	0											0	0%	0	0%
Framing of Car	0	0	0											0	0%	0	0%
Operator / Data Error	0	0	0											0	0%	1	14%
Exposure	0	0	0											0	0%	2	28%
Equipment Malfunction	0	0	0											0	0%	0	0%
ACS Expired	0	0	0											0	0%	1	14%
Total:	1	0	0											1	100%	7	100%
Summary Metrics																	
Daily Ave Vehicle Passes	15,471	14,627	15,244											15,114		16,084	
Ave Issued Speed	30	30	0											30		31	
Ave Issued Red Seconds	0.4	0.5	0											0		0.5	
Citation / Violation Iss Rate	68%	53%	0%											60%		58%	
Controllable Iss Rate	99%	100%	0%											99%		98%	



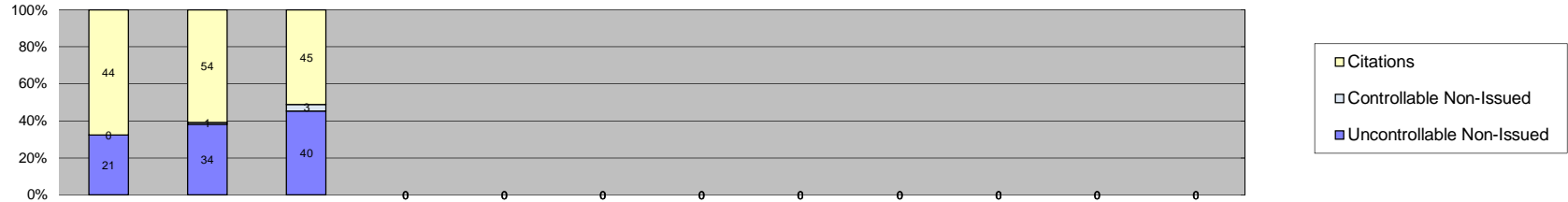
**City of West Hollywood
Approach Summary Report
Location 3163: E/B Santa Monica @ La Brea (GLD-4 Camera System)**



Events	Jan-13	Feb-13	Mar-13	Apr-13	May-13	Jun-13	Jul-13	Aug-13	Sep-13	Oct-13	Nov-13	Dec-13	Year to Date Average		2012 Average		
													Quantity	%	Quantity	%	
Non-Violations	52	48	42											47	27%	43	25%
Violations	107	123	151											127	73%	131	75%
Total:	159	171	193											174	100%	174	100%
Violations																	
Uncontrollable Non-Issued	36	40	60											45	35%	51	39%
Controllable Non-Issued	0	9	1											5	4%	2	2%
Citations	71	74	90											78	61%	79	60%
Total:	107	123	151											129	100%	132	100%
Non-Violations																	
Rear Axle Violation	0	2	0											2	4%	2	4%
Emergency Vehicle	3	1	3											2	5%	2	5%
Right Turn	33	27	27											29	60%	25	57%
No Violation Occurred	16	18	12											15	32%	15	34%
Total:	52	48	42											49	100%	44	100%
Uncontrollable Non-Issued Violations																	
No Plate	17	28	20											22	46%	21	36%
Out of State Plate	0	1	5											3	6%	5	9%
Glare on Plate	0	0	0											0	0%	2	3%
Illegible Plate	1	1	1											1	2%	2	4%
Plate Obstructed	2	1	1											1	3%	1	2%
Windshield Glare	1	3	6											3	7%	7	11%
Driver Obstructed	0	0	0											0	0%	1	2%
Car Obstructed	2	2	7											4	8%	3	4%
No DMV Match Found	12	4	20											12	26%	11	19%
LASD Expired	0	0	0											0	0%	3	5%
LASD Return	1	0	0											1	2%	2	3%
Yellow Interval Not Met	0	0	0											0	0%	0	0%
Other	0	0	0											0	0%	1	2%
Total:	36	40	60											47	100%	59	100%
Controllable Non-Issued Violations																	
Framing of Plate	0	0	0											0	0%	1	15%
Focus / Clarity of Plate	0	0	0											0	0%	1	15%
Dark Interior	0	3	1											2	4%	2	27%
Framing of Driver	0	0	0											0	0%	0	0%
Focus / Clarity of Driver	0	0	0											0	0%	0	0%
Framing of Car	0	0	0											0	0%	1	20%
Operator / Data Error	0	0	0											0	0%	0	0%
Exposure	0	0	0											0	0%	0	0%
Equipment Malfunction	0	6	0											6	13%	0	0%
ACS Expired	0	0	0											0	0%	2	23%
Total:	0	9	1											8	17%	7	100%
Summary Metrics																	
Daily Ave Vehicle Passes	16,083	15,661	15,825											15,856		16,343	
Ave Issued Speed	31	30	30											30		29	
Ave Issued Red Seconds	0.4	0.4	0.3											0		0.5	
Citation / Violation Iss Rate	66%	60%	60%											62%		61%	
Controllable Iss Rate	100%	89%	99%											96%		98%	



**City of West Hollywood
Approach Summary Report
Location 3164: W/B Santa Monica @ La Brea (GLD-4 Camera System)**



Events	Jan-13	Feb-13	Mar-13	Apr-13	May-13	Jun-13	Jul-13	Aug-13	Sep-13	Oct-13	Nov-13	Dec-13	Year to Date Average		2012 Average		
													Quantity	%	Quantity	%	
Non-Violations	33	24	29											29	26%	23	25%
Violations	65	89	88											81	74%	70	75%
Total:	98	113	117											109	100%	93	100%
Violations																	
Uncontrollable Non-Issued	21	34	40											32	39%	29	40%
Controllable Non-Issued	0	1	3											2	2%	2	3%
Citations	44	54	45											48	59%	40	56%
Total:	65	89	88											81	100%	71	100%
Non-Violations																	
Rear Axle Violation	0	1	0											1	3%	1	4%
Emergency Vehicle	4	4	3											4	13%	4	15%
Right Turn	13	9	19											14	47%	12	51%
No Violation Occurred	16	10	7											11	38%	7	30%
Total:	33	24	29											29	100%	24	100%
Uncontrollable Non-Issued Violations																	
No Plate	12	18	19											16	48%	13	35%
Out of State Plate	0	2	2											2	6%	2	6%
Glare on Plate	0	0	0											0	0%	0	0%
Illegible Plate	0	0	0											0	0%	0	0%
Plate Obstructed	1	1	0											1	3%	2	5%
Windshield Glare	2	2	13											6	17%	3	9%
Driver Obstructed	0	0	0											0	0%	2	4%
Car Obstructed	1	5	1											2	7%	2	6%
No DMV Match Found	5	4	5											5	14%	9	25%
LASD Expired	0	0	0											0	0%	3	7%
LASD Return	0	2	0											2	6%	1	3%
Yellow Interval Not Met	0	0	0											0	0%	0	0%
Other	0	0	0											0	0%	0	0%
Total:	21	34	40											34	100%	37	100%
Controllable Non-Issued Violations																	
Framing of Plate	0	0	0											0	0%	0	0%
Focus / Clarity of Plate	0	0	0											0	0%	0	0%
Dark Interior	0	0	1											1	3%	0	0%
Framing of Driver	0	0	0											0	0%	0	0%
Focus / Clarity of Driver	0	0	0											0	0%	0	0%
Framing of Car	0	0	0											0	0%	0	0%
Operator / Data Error	0	0	0											0	0%	0	0%
Exposure	0	0	0											0	0%	2	43%
Equipment Malfunction	0	1	2											2	4%	2	57%
ACS Expired	0	0	0											0	0%	0	0%
Total:	0	1	3											3	7%	4	100%
Summary Metrics																	
Daily Ave Vehicle Passes	15,172	14,845	14,879											14,965		15,591	
Ave Issued Speed	33	32	34											33		31	
Ave Issued Red Seconds	0.3	0.4	0.4											0		0.4	
Citation / Violation Iss Rate	68%	61%	51%											60%		53%	
Controllable Iss Rate	100%	98%	94%											97%		98%	



Calls For Information

Reason for Call	Mar-13	3 Month Average	Year to Date Average	Year to Date Total	2012 Average
<i>Appointment</i>	39	28	30	90	28
<i>Bail</i>	23	21	19	57	26
<i>Complaint</i>	0	0	0	0	0
<i>Contest Violation</i>	14	27	22	65	33
<i>Courtesy Notice</i>	3	3	3	10	12
<i>Explain Citation</i>	9	5	8	23	6
<i>Explain Court</i>	1	0	0	1	0
<i>Explain the Project</i>	0	0	0	0	0
<i>Extension</i>	4	7	5	16	10
<i>Other</i>	0	0	0	0	0
<i>Affidavit of Non-Liability</i>	16	20	18	53	26
<i>Affidavit of Non-Liability Status</i>	0	2	1	2	2
<i>Traffic School</i>	3	5	3	10	7
Total Calls	112	118	109	327	150
Appointments Scheduled	24	24	23	69	23
Affidavits of Non-Liability Processed	255	224	230	690	263
Court Packets Prepared	129	82	92	276	85



City of West Hollywood
Monthly Citation Yield - By Location
March 2013

Direction	Location	Code	Days of Enforcement	Events	Violations	Citations	Yield*
EB	Beverly & Robertson	3103	31	200	160	97	3.1
WB	Beverly & Robertson	3104	31	187	168	81	2.6
NB	Fairfax & Fountain	3111	31	142	124	64	2.1
SB	Fairfax & Fountain	3112	31	49	42	19	0.6
EB	Fountain & Fairfax	3113	31	59	14	8	0.3
NB	Crescent Heights & Fountain	3121	31	60	40	23	0.7
SB	Crescent Heights & Fountain	3122	31	58	33	16	0.5
EB	Fountain & Crescent Heights	3123	0	0	0	0	NA
WB	Fountain & Crescent Heights	3124	0	0	0	0	NA
NB	La Cienega & Melrose	3131	31	227	203	119	3.8
SB	La Cienega & Melrose	3132	31	202	87	52	1.7
EB	Melrose & La Cienega	3133	0	0	0	0	NA
NB	La Brea & Fountain	3141	31	511	120	63	2.0
SB	La Brea & Fountain	3142	31	610	104	66	2.1
EB	Sunset & La Cienega	3143	31	916	164	72	2.3
WB	Sunset & La Cienega	3144	31	179	144	75	2.4
NB	Fairfax & Santa Monica	3151	31	83	75	23	0.7
SB	Fairfax & Santa Monica	3152	29	79	58	32	1.1
EB	Santa Monica & Fairfax	3153	2	1	0	0	0.0
WB	Santa Monica & Fairfax	3154	0	0	0	0	NA
NB	La Brea & Santa Monica	3161	31	380	234	136	4.4
SB	La Brea & Santa Monica	3162	0	0	0	0	NA
EB	Santa Monica & La Brea	3163	31	193	151	90	2.9
WB	Santa Monica & La Brea	3164	31	117	88	45	1.5
Totals			Average Days of Enf. 29	4,253	2,009	1,081	37

*Yield is the average number of citations issued per day of enforcement.

	Location not active (Part of Rotation Schedule)
	Location active (Part of Rotation Schedule or In Place of Damaged Location)



City of West Hollywood
 Camera Rotation Log
 March 2013

DATE	3103	3104	3111	3112	3113	3121	3122	3123	3124	3131	3132	3133	3141	3142	3143	3144	3151	3152	3153	3154	3161	3162	3163	3164	
03/01/13	1132/40	1847/26				1105/4	1133/12			1504/18	1151/24				1054/122	1887/30			1921/12						
03/02/13																									
03/03/13			1510/22	1605/8									1234/120	1241/104			1600/16	1149/4				1394/76	1186/4	1574/32	
03/04/13	1132/40	1847/16				1105/14	1133/6			1504/50	1151/38				1054/182	1887/36									
03/05/13			1510/24	1605/10									1234/54	1241/58			1600/6	1149/6					1394/50	1186/26	1574/10
03/06/13	1132/20	1847/14				1105/8	1133/2			1504/28	1151/32				1054/108	1887/20									
03/07/13			1510/22	1605/2	1921/6								1234/58	1241/64			1600/12	1149/8					1394/64	1186/16	1574/8
03/08/13	1132/30	1600/28				1105/12	1133/16			1504/16	1151/34				1054/108	1887/26									
03/09/13																									
03/10/13	1132/2	1847/32	1510/34	1605/6		1105/10	1133/8			1504/36	1151/12		1234/98	1241/120	1054/140	1887/24	1600/8	1149/18				1394/40	1186/48	1574/34	
03/11/13	1132/10	1847/8				1105/2	1133/2			1504/6	1151/6				1054/64	1887/8									
03/12/13			1510/16	1605/6	1921/14								1234/64	1241/58			1600/10	1149/10					1394/40	1186/26	1574/12
03/13/13	1132/30	1847/46				1105/10	1133/10			1504/24	1151/22				1054/132	1887/24									
03/14/13			1510/8	1605/6	1921/16								1234/54	1241/80			1600/10	1149/8					1394/52	1186/26	1574/16
03/15/13																									
03/16/13																									
03/17/13																									
03/18/13	1132/70	1847/60	1510/48	1605/24	1921/14	1105/18	1133/22			1504/94	1151/90		1234/174	1241/164	1054/276	1887/54	1600/24	1149/28				1394/94	1186/56	1574/42	
03/19/13			1510/8	1605/4	1921/4								1234/34	1241/42			1600/8	1149/4					1394/26	1186/0	1574/8
03/20/13	1132/22	1847/30				1105/6	1133/12			1504/40	1151/28				1054/124	1887/24									
03/21/13			1510/24	1605/6	1921/4								1234/72	1241/90			1600/18						1394/62	1186/28	1574/10
03/22/13	1132/32	1847/24				1105/4	1133/12			1504/18	1151/26				1054/102	1887/26									
03/23/13																									
03/24/13																									
03/25/13	1132/42	1847/38	1510/42	1605/14	1921/14	1105/12	1133/12			1504/40	1151/28		1234/108	1241/172	1054/192	1887/44	1600/22	1149/24				1394/114	1186/76	1574/34	
03/26/13			1510/2	0605/2	1921/4								1234/28	1241/38			1600/2	1149/4					1394/14	1186/10	1574/6
03/27/13	1132/30	1847/28				1105/8	1133/2			1504/42	1151/20				1054/102	1887/24									
03/28/13			1510/2	1605/10	1921/16								1234/72	1241/84			1600/16	1149/20					1394/72	1186/20	1574/10
03/29/13	1132/24	1847/20				1105/12	1133/4			1504/30	1151/30				1054/140	1887/16									
03/30/13																									
03/31/13																									

3103 = EB Beverly & Robertson
 3104 = WB Beverly & Robertson
 3111 = NB Fairfax & Fountain
 3112 = SB Fairfax & Fountain
 3113 = EB Fountain & Fairfax

3121 = NB Crescent Heights & Fountain
 3122 = SB Crescent Heights & Fountain
 3123 = EB Fountain & Crescent Heights
 3124 = WB Fountain & Crescent Heights
 3131 = NB La Cienega & Melrose

3132 = SB La Cienega & Melrose
 3133 = EB Melrose & La Cienega
 3141 = NB La Brea & Fountain
 3142 = SB La Brea & Fountain
 3143 = EB Sunset & La Cienega

3144 = WB Sunset & La Cienega
 3151 = NB Fairfax & Santa Monica
 3152 = SB Fairfax & Santa Monica
 3153 = EB Santa Monica & Fairfax
 3154 = WB Santa Monica & Fairfax

3161 = NB La Brea & Santa Monica
 3162 = SB La Brea & Santa Monica
 3163 = EB Santa Monica & La Brea
 3164 = WB Santa Monica & La Brea

	Weekend
	Holiday
	Location Not Active (Rotation Schedule)
	Location Active (Rotation Schedule or In Place of Damaged Location)
	Location Out of Service (Damaged)



City of West Hollywood
Disposition Summary Report
March 2013

	Mar-13		3 Month Average		YTD Total		YTD Average		2012 Average	
Disposition Type	Count /Amount Paid		Count /Amount Paid		Count /Amount Paid		Count /Amount Paid		Count /Amount Paid	
<i>Bail Forfeiture</i>	306	\$156,662	320	\$162,002	966	\$491,413	322	\$163,804	305	\$153,544
<i>Fine Paid</i>	33	\$15,624	51	\$26,533	137	\$68,703	46	\$22,901	42	\$22,430
<i>Department Void</i>	0	\$0	0	\$0	0	\$0	0	\$0	0	\$0
<i>Not Guilty</i>	354	\$0	527	\$0	1,346	\$0	449	\$0	334	\$0
<i>Section D Void</i>	255	\$0	224	\$0	690	\$0	230	\$0	280	\$0
<i>Traffic School</i>	134	\$71,317	193	\$96,270	515	\$254,875	172	\$84,958	164	\$87,223
Court Gross Total	1082	\$243,603	1,314	\$284,805	3,654	\$814,991	1,218	\$271,664	1,125	\$263,196
City Gross Total*	473	\$69,438	564	\$82,806	1,618	\$237,626	539	\$79,209	511	\$75,062

*Logic built on following model (assuming the new 2009 fine and fee structure):

City receives \$146.31 of \$446.00 citation where bail forfeiture and fine paid occurs

City receives \$148.05 of \$509.00 citation when traffic school option is paid for



City of West Hollywood
Performance Report
March 2013

	<u>Total</u> <u>Events</u>	<u>Non</u> <u>Violations</u>	<u>Percent</u> <u>Citable</u>	<u>Potential</u> <u>Violations</u>	<u>Initial</u> <u>Rejects</u>	<u>Violations</u> <u>Captured</u>	<u>N/A</u> <u>Returns</u>	<u>DMV</u> <u>Success</u> <u>Rate</u>	<u>Police/</u> <u>Client</u> <u>Rejected</u>	<u>Issuance</u> <u>Rate</u>	<u>Mailed</u>	<u>Dispo</u> <u>Paid</u>	<u>Pay</u> <u>Rate</u>	<u>Closed</u> <u>No Pay</u>	<u>Pending</u>	<u>Closure</u> <u>Rate</u>	<u>Court</u> <u>Packs</u>	<u>Contest</u> <u>Rate</u>
Aug-99	5,074	2,969	41%	2,105	1,412	693	486	70%	4	23%	482	370	77%	104	7	98%	-	-
Sep-99	5,607	3,163	44%	2,444	1,499	945	635	67%	0	26%	635	482	76%	118	21	94%	-	-
Oct-99	7,141	3,425	52%	3,716	1,897	1,819	1,533	84%	11	41%	1,522	1,152	76%	297	45	95%	-	-
Nov-99	6,954	3,908	44%	3,046	1,160	1,886	1,698	90%	4	56%	1,694	1,294	76%	301	46	94%	-	-
Dec-99	6,909	3,728	46%	3,181	1,300	1,881	1,759	94%	4	55%	1,755	1,367	78%	254	90	92%	-	-
Jan-00	6,380	3,365	47%	3,015	1,343	1,672	1,662	99%	31	54%	1,631	1,267	78%	218	102	91%	-	-
Feb-00	5,654	2,699	52%	2,955	1,377	1,578	1,548	98%	11	52%	1,537	1,158	75%	270	56	93%	-	-
Mar-00	6,159	2,902	53%	3,257	1,626	1,631	1,612	99%	3	49%	1,609	1,209	75%	283	67	93%	-	-
Apr-00	5,345	2,897	46%	2,448	1,275	1,173	1,157	99%	9	47%	1,148	855	74%	236	36	95%	-	-
May-00	6,865	3,931	43%	2,934	1,442	1,492	1,479	99%	3	50%	1,476	1,136	77%	204	120	91%	-	-
Jun-00	7,428	3,998	46%	3,430	1,507	1,923	1,900	99%	3	55%	1,897	1,453	77%	244	180	89%	-	-
Jul-00	6,638	3,611	46%	3,027	1,521	1,506	1,491	99%	3	49%	1,488	1,149	77%	196	140	90%	-	-
Aug-00	4,791	1,580	67%	3,211	1,451	1,760	1,736	99%	0	54%	1,736	1,294	75%	231	211	88%	-	-
Sep-00	4,529	1,729	62%	2,800	1,205	1,595	1,574	99%	1	56%	1,573	1,212	77%	221	140	91%	-	-
Oct-00	4,284	1,583	63%	2,701	1,172	1,529	1,505	98%	0	56%	1,505	1,148	76%	209	148	90%	-	-
Nov-00	4,176	1,509	64%	2,667	1,043	1,624	1,608	99%	0	60%	1,608	1,241	77%	234	133	92%	-	-
Dec-00	4,068	1,519	63%	2,549	983	1,566	1,545	99%	0	61%	1,545	1,157	75%	226	162	90%	-	-
Jan-01	3,639	1,423	61%	2,216	868	1,348	1,321	98%	0	60%	1,321	1,022	77%	171	128	90%	-	-
Feb-01	3,795	1,204	68%	2,591	1,058	1,533	1,522	99%	0	59%	1,522	1,137	75%	223	162	89%	-	-
Mar-01	4,093	1,166	72%	2,927	1,240	1,687	1,660	98%	1	57%	1,659	1,254	76%	202	203	88%	-	-
Apr-01	3,497	1,422	59%	2,075	900	1,175	1,156	98%	0	56%	1,156	883	76%	133	140	88%	-	-
May-01	3,406	1,264	63%	2,142	1,098	1,044	1,037	99%	0	48%	1,037	771	74%	118	148	86%	-	-
Jun-01	4,041	1,411	65%	2,630	1,115	1,515	1,495	99%	0	57%	1,495	1,122	75%	131	242	84%	-	-
Jul-01	5,308	2,289	57%	3,019	1,280	1,739	1,718	99%	2	57%	1,716	1,169	68%	261	286	83%	-	-
Aug-01	5,503	1,942	65%	3,561	1,301	2,260	2,222	98%	0	62%	2,222	1,618	73%	210	394	82%	-	-
Sep-01	4,784	1,625	66%	3,159	1,118	2,041	2,001	98%	0	63%	2,001	1,481	74%	167	353	82%	-	-
Oct-01	4,819	1,894	61%	2,925	1,028	1,897	1,862	98%	0	64%	1,862	1,387	74%	193	282	85%	-	-
Nov-01	3,873	1,357	65%	2,516	934	1,582	1,540	97%	17	61%	1,523	1,162	76%	119	242	84%	-	-
Dec-01	3,993	1,703	57%	2,290	954	1,336	1,275	95%	7	55%	1,268	964	76%	114	190	85%	-	-
Jan-02	3,850	1,518	61%	2,332	956	1,376	1,336	97%	2	57%	1,334	1,003	75%	107	224	83%	-	-
Feb-02	3,784	1,413	63%	2,371	829	1,542	1,520	99%	2	64%	1,518	1,141	75%	126	251	83%	-	-
Mar-02	5,093	2,238	56%	2,855	1,083	1,772	1,741	98%	9	61%	1,732	1,300	75%	132	300	83%	-	-
Apr-02	4,475	1,779	60%	2,696	953	1,743	1,713	98%	11	63%	1,702	1,276	75%	152	274	84%	-	-
May-02	4,421	1,484	66%	2,937	1,063	1,874	1,853	99%	0	63%	1,853	1,401	76%	152	300	84%	-	-
Jun-02	4,551	1,347	70%	3,204	1,287	1,917	1,876	98%	0	59%	1,876	1,399	75%	161	316	83%	-	-
Jul-02	4,597	1,414	69%	3,183	1,162	2,021	1,995	99%	4	63%	1,991	1,509	76%	153	329	83%	-	-
Aug-02	4,251	1,273	70%	2,978	1,076	1,902	1,834	96%	7	61%	1,827	1,358	74%	150	319	83%	-	-
Sep-02	4,033	1,414	65%	2,619	958	1,661	1,630	98%	19	62%	1,611	1,191	74%	138	282	82%	-	-
Oct-02	4,024	1,220	70%	2,804	1,085	1,719	1,650	96%	0	59%	1,650	1,219	74%	134	297	82%	-	-
Nov-02	3,643	1,290	65%	2,353	914	1,439	1,386	96%	2	59%	1,384	1,014	73%	127	243	82%	-	-
Dec-02	3,802	1,499	61%	2,303	821	1,482	1,377	93%	0	60%	1,377	1,008	73%	132	237	83%	-	-



City of West Hollywood
Performance Report
March 2013

	<u>Total</u> <u>Events</u>	<u>Non</u> <u>Violations</u>	<u>Percent</u> <u>Citable</u>	<u>Potential</u> <u>Violations</u>	<u>Initial</u> <u>Rejects</u>	<u>Violations</u> <u>Captured</u>	<u>N/A</u> <u>Returns</u>	<u>DMV</u> <u>Success</u> <u>Rate</u>	<u>Police/</u> <u>Client</u> <u>Rejected</u>	<u>Issuance</u> <u>Rate</u>	<u>Mailed</u>	<u>Dispo</u> <u>Paid</u>	<u>Pay</u> <u>Rate</u>	<u>Closed</u> <u>No Pay</u>	<u>Pending</u>	<u>Closure</u> <u>Rate</u>	<u>Court</u> <u>Packs</u>	<u>Contest</u> <u>Rate</u>
Jan-03	3,897	1,411	64%	2,486	864	1,622	1,461	90%	1	59%	1,460	1,071	73%	125	264	82%	-	-
Feb-03	3,493	1,192	66%	2,301	872	1,429	1,339	94%	3	58%	1,336	963	72%	140	233	83%	-	-
Mar-03	3,934	1,327	66%	2,607	941	1,666	1,568	94%	92	57%	1,476	1,053	71%	179	244	83%	-	-
Apr-03	3,635	1,297	64%	2,338	830	1,508	1,426	95%	155	54%	1,271	904	71%	129	238	81%	-	-
May-03	3,722	1,341	64%	2,381	903	1,478	1,412	96%	69	56%	1,343	949	71%	133	261	81%	-	-
Jun-03	3,798	1,489	61%	2,309	854	1,455	1,427	98%	87	58%	1,340	955	71%	135	250	81%	-	-
Jul-03	3,601	1,249	65%	2,352	874	1,478	1,443	98%	74	58%	1,369	995	73%	145	229	83%	-	-
Aug-03	3,532	1,215	66%	2,317	871	1,446	1,423	98%	15	61%	1,408	995	71%	138	275	80%	-	-
Sep-03	3,372	1,221	64%	2,151	722	1,429	1,405	98%	63	62%	1,342	1,013	75%	115	214	84%	-	-
Oct-03	3,572	1,309	63%	2,263	777	1,486	1,453	98%	59	62%	1,394	1,027	74%	113	254	82%	-	-
Nov-03	3,236	1,123	65%	2,113	773	1,340	1,311	98%	31	61%	1,280	913	71%	136	231	82%	-	-
Dec-03	2,957	1,079	64%	1,878	672	1,206	1,177	98%	48	60%	1,129	799	71%	128	202	82%	-	-
Jan-04	3,098	1,135	63%	1,963	681	1,282	1,259	98%	46	62%	1,213	907	75%	97	209	83%	-	-
Feb-04	3,539	1,173	67%	2,366	752	1,614	1,587	98%	113	62%	1,474	1,050	71%	132	292	80%	-	-
Mar-04	3,683	1,199	67%	2,484	878	1,606	1,573	98%	223	54%	1,350	969	72%	138	243	82%	-	-
Apr-04	2,985	1,121	62%	1,864	664	1,200	1,176	98%	86	58%	1,090	822	75%	73	195	82%	-	-
May-04	3,402	1,191	65%	2,211	759	1,452	1,422	98%	91	60%	1,331	978	73%	102	251	81%	-	-
Jun-04	3,258	1,079	67%	2,179	879	1,300	1,270	98%	11	58%	1,259	939	75%	94	226	82%	-	-
Jul-04	3,450	1,123	67%	2,327	849	1,478	1,441	97%	90	58%	1,351	1,017	75%	90	244	82%	-	-
Aug-04	3,915	1,273	67%	2,642	913	1,729	1,686	98%	87	61%	1,599	1,188	74%	110	301	81%	-	-
Sep-04	3,400	1,161	66%	2,239	808	1,431	1,404	98%	66	60%	1,338	1,022	76%	109	207	85%	-	-
Oct-04	3,547	1,239	65%	2,308	846	1,462	1,421	97%	69	59%	1,352	1,031	76%	91	230	83%	-	-
Nov-04	3,313	1,217	63%	2,096	773	1,323	1,298	98%	37	60%	1,261	942	75%	104	215	83%	-	-
Dec-04	3,294	1,208	63%	2,086	774	1,312	1,285	98%	88	57%	1,197	905	76%	87	205	83%	-	-
Jan-05	2,926	1,073	63%	1,853	698	1,155	1,130	98%	115	55%	1,015	762	75%	74	179	82%	-	-
Feb-05	3,198	1,133	65%	2,065	753	1,312	1,292	98%	118	57%	1,174	862	73%	85	227	81%	-	-
Mar-05	3,446	1,179	66%	2,267	790	1,477	1,404	95%	103	57%	1,301	986	76%	80	235	82%	-	-
Apr-05	3,267	1,237	62%	2,030	744	1,286	1,264	98%	164	54%	1,100	812	74%	90	198	82%	-	-
May-05	2,979	1,083	64%	1,896	638	1,258	1,243	99%	108	60%	1,135	849	75%	79	207	82%	-	-
Jun-05	3,048	1,051	66%	1,997	727	1,270	1,254	99%	89	58%	1,165	852	73%	88	225	81%	-	-
Jul-05	3,531	1,183	66%	2,348	939	1,409	1,388	99%	94	55%	1,294	953	74%	78	263	80%	-	-
Aug-05	3,688	1,198	68%	2,490	1,099	1,391	1,373	99%	54	53%	1,319	965	73%	101	253	81%	-	-
Sep-05	3,645	1,243	66%	2,402	719	1,683	1,665	99%	121	64%	1,544	1,174	76%	99	271	82%	-	-
Oct-05	3,284	1,133	65%	2,151	794	1,357	1,338	99%	53	60%	1,285	952	74%	102	231	82%	-	-
Nov-05	3,693	1,383	63%	2,310	712	1,598	1,570	98%	60	65%	1,510	1,122	74%	130	258	83%	-	-
Dec-05	3,376	1,409	58%	1,967	602	1,365	1,344	98%	70	65%	1,274	890	70%	163	221	83%	-	-
Jan-06	3,501	1,385	60%	2,116	708	1,408	1,386	98%	55	63%	1,331	966	73%	130	235	82%	133	10%
Feb-06	3,398	1,306	62%	2,092	767	1,325	1,298	98%	76	58%	1,222	891	73%	137	194	84%	111	8%
Mar-06	3,837	1,537	60%	2,300	738	1,562	1,536	98%	110	62%	1,426	1,020	72%	164	242	83%	135	9%
Apr-06	3,893	1,799	54%	2,094	767	1,327	1,307	98%	106	57%	1,201	863	72%	165	173	86%	113	9%
May-06	3,791	1,476	61%	2,315	711	1,604	1,575	98%	122	63%	1,453	1,030	71%	167	256	82%	133	9%
Jun-06	4,069	1,519	63%	2,550	848	1,702	1,581	93%	137	57%	1,444	1,009	70%	182	253	82%	76	6%
Jul-06	3,776	1,385	63%	2,391	755	1,636	1,613	99%	130	62%	1,483	1,006	68%	203	274	82%	124	9%
Aug-06	3,064	917	70%	2,147	688	1,459	1,419	97%	132	60%	1,287	870	68%	130	287	78%	114	9%
Sep-06	2,785	883	68%	1,902	604	1,298	1,275	98%	98	62%	1,177	820	70%	140	217	82%	103	7%
Oct-06	3,091	1,092	65%	1,999	817	1,182	1,162	98%	130	52%	1,032	748	72%	133	151	85%	131	11%
Nov-06	3,470	1,340	61%	2,130	920	1,210	1,186	98%	141	49%	1,045	747	71%	137	161	85%	54	4%
Dec-06	3,122	1,002	68%	2,120	888	1,232	1,124	91%	115	48%	1,009	715	71%	116	178	82%	97	7%



City of West Hollywood
Performance Report
March 2013

	<u>Total</u>	<u>Non</u>	<u>Percent</u>	<u>Potential</u>	<u>Initial</u>	<u>Violations</u>	<u>N/A</u>	<u>DMV</u>	<u>Police/</u>	<u>Issuance</u>		<u>Dispo</u>	<u>Pay</u>	<u>Closed</u>		<u>Closure</u>	<u>Court</u>	<u>Contest</u>
	<u>Events</u>	<u>Violations</u>	<u>Citable</u>	<u>Violations</u>	<u>Rejects</u>	<u>Captured</u>	<u>Returns</u>	<u>Success</u>	<u>Client</u>	<u>Rate</u>	<u>Mailed</u>	<u>Paid</u>	<u>Rate</u>	<u>No Pay</u>	<u>Pending</u>	<u>Rate</u>	<u>Packs</u>	<u>Rate</u>
Jan-07	3,119	937	70%	2,182	894	1,288	1,166	91%	90	49%	1,076	681	63%	241	154	86%	89	6%
Feb-07	2,874	913	68%	1,961	801	1,160	1,034	89%	77	49%	957	666	70%	128	163	83%	86	7%
Mar-07	3,309	1,144	65%	2,165	817	1,348	1,178	87%	99	50%	1,079	745	69%	166	168	84%	84	7%
Apr-07	3,145	1,093	65%	2,052	862	1,190	1,064	89%	88	48%	976	681	70%	103	192	80%	89	9%
May-07	3,368	1,267	62%	2,101	918	1,183	1,052	89%	64	47%	988	703	71%	115	170	83%	75	7%
Jun-07	3,364	1,094	67%	2,270	916	1,354	1,170	86%	75	48%	1,095	767	70%	100	228	79%	79	8%
Jul-07	3,088	1,121	64%	1,967	789	1,178	1,019	87%	46	49%	973	628	65%	126	219	77%	57	5%
Aug-07	2,790	954	66%	1,836	748	1,088	936	86%	28	49%	908	573	63%	134	201	78%	73	8%
Sep-07	3,004	1,110	63%	1,894	870	1,024	887	87%	30	45%	857	518	60%	65	274	68%	68	6%
Oct-07	2,879	1,079	63%	1,800	784	1,016	898	88%	29	48%	869	558	64%	64	247	72%	37	4%
Nov-07	2,795	972	65%	1,823	688	1,135	1,004	88%	41	53%	963	574	60%	94	295	69%	63	6%
Dec-07	2,748	977	64%	1,771	696	1,075	959	89%	55	51%	904	601	66%	81	222	75%	63	6%
Jan-08	2,635	959	64%	1,676	676	1,000	886	89%	36	51%	850	638	75%	82	130	85%	85	9%
Feb-08	2,490	908	64%	1,582	749	833	718	86%	5	45%	713	534	75%	64	115	84%	103	11%
Mar-08	2,850	929	67%	1,921	930	991	894	90%	7	46%	887	655	74%	102	130	85%	45	5%
Apr-08	2,896	1,016	65%	1,880	971	909	803	88%	5	42%	798	546	68%	82	170	79%	98	11%
May-08	2,995	1,095	63%	1,900	913	987	852	86%	5	45%	847	574	68%	95	178	79%	81	8%
Jun-08	2,834	965	66%	1,869	852	1,017	914	90%	8	48%	906	608	67%	123	175	81%	67	7%
Jul-08	2,729	901	67%	1,828	807	1,021	933	91%	7	51%	926	589	64%	128	209	77%	68	8%
Aug-08	2,264	618	73%	1,646	545	1,101	1,009	92%	10	61%	999	682	68%	125	192	81%	64	9%
Sep-08	2,495	765	69%	1,730	667	1,063	947	89%	6	54%	941	638	68%	97	206	78%	63	7%
Oct-08	2,847	1,023	64%	1,824	701	1,123	1,008	90%	13	55%	995	677	68%	118	200	80%	84	11%
Nov-08	2,694	950	65%	1,744	616	1,128	1,000	89%	8	57%	992	707	71%	88	197	80%	58	7%
Dec-08	2,754	921	67%	1,833	787	1,046	936	89%	17	50%	919	640	70%	78	201	78%	64	7%
Jan-09	2,521	894	65%	1,627	597	1,030	915	89%	11	56%	904	613	68%	97	194	79%	88	10%
Feb-09	2,292	807	65%	1,485	583	902	811	90%	5	54%	806	541	67%	115	150	81%	73	7%
Mar-09	2,547	895	65%	1,652	661	991	896	90%	6	54%	890	593	67%	120	177	80%	96	10%
Apr-09	2,457	835	66%	1,622	697	925	812	88%	8	50%	804	530	66%	127	147	82%	110	11%
May-09	2,655	903	66%	1,752	693	1,059	955	90%	34	53%	921	642	70%	126	153	83%	90	9%
Jun-09	2,815	1,043	63%	1,772	683	1,089	980	90%	18	54%	962	633	66%	133	196	80%	65	7%
Jul-09	5,699	3,778	34%	1,921	768	1,153	1,048	91%	19	54%	1,029	691	67%	116	222	78%	57	6%
Aug-09	5,250	3,442	34%	1,808	716	1,092	992	91%	10	54%	982	614	63%	178	190	81%	67	8%
Sep-09	4,663	3,263	30%	1,400	418	982	879	90%	4	63%	875	610	70%	106	159	82%	62	7%
Oct-09	5,176	3,375	35%	1,801	701	1,100	982	89%	12	54%	970	598	62%	192	180	81%	71	9%
Nov-09	4,685	3,033	35%	1,652	671	981	885	90%	31	52%	854	574	67%	118	162	81%	44	5%
Dec-09	5,024	3,633	28%	1,391	570	821	739	90%	15	52%	724	485	67%	114	125	83%	110	11%
Jan-10	5,401	4,068	25%	1,333	492	841	744	88%	20	54%	724	479	66%	100	140	80%	26	3%
Feb-10	5,714	4,366	24%	1,348	528	820	683	83%	14	50%	669	440	66%	80	142	78%	70	7%
Mar-10	5,919	4,388	26%	1,531	670	861	764	89%	22	48%	742	501	68%	93	136	80%	83	9%
Apr-10	7,093	5,453	23%	1,640	746	894	775	87%	14	46%	761	469	62%	111	164	76%	73	8%
May-10	5,863	4,149	29%	1,714	678	1,036	942	91%	23	54%	919	589	64%	91	198	74%	64	7%
Jun-10	5,251	3,457	34%	1,794	774	1,020	929	91%	19	51%	910	570	63%	112	175	75%	48	7%
Jul-10	4,809	3,053	37%	1,756	769	987	891	90%	11	50%	880	539	61%	81	195	70%	108	15%
Aug-10	4,662	2,930	37%	1,732	692	1,040	952	92%	17	54%	935	539	58%	95	224	68%	41	6%
Sep-10	4,451	2,945	34%	1,506	622	884	777	88%	7	51%	770	465	60%	47	187	66%	82	11%
Oct-10	4,319	2,874	33%	1,445	577	868	780	90%	40	51%	740	433	59%	43	192	64%	57	7%
Nov-10	4,287	2,766	35%	1,521	565	956	869	91%	71	52%	798	458	57%	7	230	58%	53	6%
Dec-10	3,873	2,396	38%	1,477	826	651	586	90%	36	37%	550	312	57%	6	140	58%	90	10%
Jan-11	3,669	2,521	31%	1,148	610	538	491	91%	8	42%	483	279	58%	78	126	74%	77	9%



City of West Hollywood
Performance Report
March 2013

	<u>Total</u> <u>Events</u>	<u>Non</u> <u>Violations</u>	<u>Percent</u> <u>Citable</u>	<u>Potential</u> <u>Violations</u>	<u>Initial</u> <u>Rejects</u>	<u>Violations</u> <u>Captured</u>	<u>N/A</u> <u>Returns</u>	<u>DMV</u> <u>Success</u> <u>Rate</u>	<u>Police/</u> <u>Client</u> <u>Rejected</u>	<u>Issuance</u> <u>Rate</u>	<u>Mailed</u>	<u>Dispo</u> <u>Paid</u>	<u>Pay</u> <u>Rate</u>	<u>Closed</u> <u>No Pay</u>	<u>Pending</u>	<u>Closure</u> <u>Rate</u>	<u>Court</u> <u>Packs</u>	<u>Contest</u> <u>Rate</u>
Feb-11	3,783	2,473	35%	1,310	697	613	557	91%	11	42%	546	298	55%	95	153	72%	65	7%
Mar-11	4,531	2,930	35%	1,601	679	922	814	88%	56	47%	758	430	57%	115	213	72%	62	8%
Apr-11	4,141	2,832	32%	1,309	450	859	756	88%	4	57%	752	375	50%	141	236	69%	80	11%
May-11	4,972	3,122	37%	1,850	1,034	816	733	90%	6	39%	727	341	47%	144	242	67%	73	9%
Jun-11	4,237	2,674	37%	1,563	715	848	772	91%	3	49%	769	324	42%	144	301	61%	69	13%
Jul-11	4,491	2,758	39%	1,733	690	1,043	900	86%	10	51%	890	361	41%	157	372	58%	103	21%
Aug-11	5,035	3,178	37%	1,857	735	1,122	1,003	89%	7	54%	996	375	38%	208	413	59%	73	13%
Sep-11	4,383	2,596	41%	1,787	716	1,071	947	88%	6	53%	941	375	40%	174	392	58%	111	15%
Oct-11	4,447	2,447	45%	2,000	640	1,360	1,182	87%	30	58%	1,152	483	42%	189	480	58%	52	7%
Nov-11	4,450	2,563	42%	1,887	616	1,271	1,148	90%	26	59%	1,122	444	40%	215	463	59%	77	11%
Dec-11	4,277	2,419	43%	1,858	516	1,342	1,156	86%	29	61%	1,127	437	39%	172	518	54%	84	11%
Jan-12	4,352	2,421	44%	1,931	516	1,415	1,198	85%	44	60%	1,154	417	36%	173	564	51%	103	12%
Feb-12	4,258	2,352	45%	1,906	588	1,318	1,120	85%	48	56%	1,072	327	31%	201	544	49%	57	6%
Mar-12	4,807	2,581	46%	2,226	777	1,449	1,280	88%	33	56%	1,247	368	30%	230	649	48%	60	6%
Apr-12	4,920	2,703	45%	2,217	822	1,395	1,246	89%	35	55%	1,211	291	24%	221	699	42%	89	8%
May-12	5,216	2,789	47%	2,427	850	1,577	1,417	90%	65	56%	1,352	267	20%	255	830	39%	84	7%
Jun-12	3,227	1,228	62%	1,999	386	1,613	1,452	90%	73	69%	1,379	307	22%	217	855	38%	95	8%
Jul-12	4,806	2,412	50%	2,394	862	1,532	1,381	90%	79	54%	1,302	283	22%	175	844	35%	59	5%
Aug-12	5,237	2,698	48%	2,539	837	1,702	1,489	87%	67	56%	1,422	230	16%	189	1,003	29%	54	5%
Sep-12	5,087	2,704	47%	2,383	726	1,657	1,463	88%	71	58%	1,392	181	13%	189	1,022	27%	134	11%
Oct-12	4,567	2,410	47%	2,157	649	1,508	1,320	88%	51	59%	1,269	185	15%	147	937	26%	114	9%
Nov-12	3,983	2,247	44%	1,736	474	1,262	1,056	84%	36	59%	1,020	129	13%	78	813	20%	71	5%
Dec-12	3,854	2,283	41%	1,571	483	1,088	899	83%	31	55%	868	97	11%	32	739	15%	98	7%
Jan-13	4,038	2,466	39%	1,572	475	1,097	962	88%	28	59%	934	31	3%	12	891	5%	60	5%
Feb-13	3,881	2,191	44%	1,690	540	1,150	1,001	87%	26	58%	975	1	0%	-	974	0%	87	7%
Mar-13	4,253	2,244	47%	2,009	758	1,251	1,111	89%	30	54%	1,081	-	0%	-	1,081	0%	146	10%
Total	660,082	305,122	54%	354,960	138,784	216,176	202,749	94%	6,604	55%	196,145	128,741	67%	22,326	44,116	79%	7,032	8%

* Total Pay and Closure Rates omit the last 4 months to allow for court processing

** The Contest Rate assumes a 6 month lag from the violation date and is only available from January 2006 to present